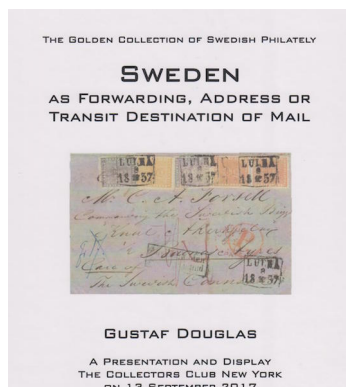
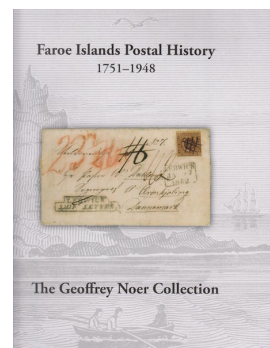


Library Acquisitions

Following are a few recent additions to the SCC Library. These and the entire library collection are available to SCC members. Check the library's extensive (and growing) catalog by clicking on [Library Resources](#). For further information and to borrow materials email albrightsp@gmail.com.

Faroe Islands Postal History, 1751-1948.

An advanced and highly developed Faroe Islands postal history exhibit published in book form and including almost all the important Faroese rarities.

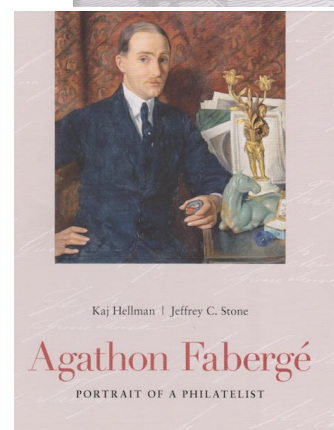


Sweden as Forwarding, Address or Transit Destination of Mail.

Stunning presentation of Swedish mail from the premier collection of Gustaf Douglas.

A Review of the Life of Norway One from 3.1. 1855 to 17.8. 1857.

This exhibit by Warren Grosjean is linked to several other exhibits at the SCC Library linked to Norway's first postage stamp.



Frans Richard Julius Granberg.

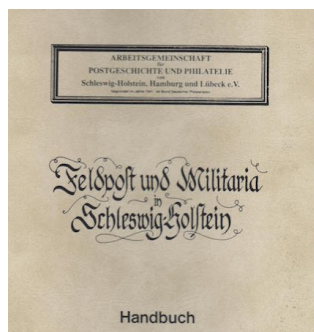
A PowerPoint presentation about an ambitious collector of Finnish postal stationery from 1885-1929 who eventually was accused of fraud.

Agathon Fabergé: Portrait of a Philatelist.

A recounting of one of history's greatest philatelic collectors and scholars.

Slesvig-Holstein.

Recently donated volumes include a handbook of the field post and the military in Slesvig-Holstein and the postal service between Slesvig-Holstein and the German-Austrian areas.



Malmö Private Local Post.

Handbook and catalog for the stamps and postal history relating to Malmö's private local post.

Finnish Philately.

Recent additions are books on railway transportation in Finland, postmarks used in territories ceded to the USSR, and postal markings on Finnish insured and registered mail.

Exhibits.

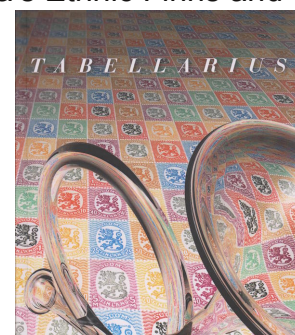
Copies of exhibits include: Stamp Issuing Steamship Companies, Finland's 1891 Ring Stamps and Postal Stationery, Letter Mail between Finland and the Americas, 1939-1946; and Russia's Ethnic Finns and the Quest for Reunion, 1919-1922.

Tabellarius 18 (2017).

The annual compilation of philatelic articles from the Finnish Post Museum (in Finnish with text summaries in Swedish).

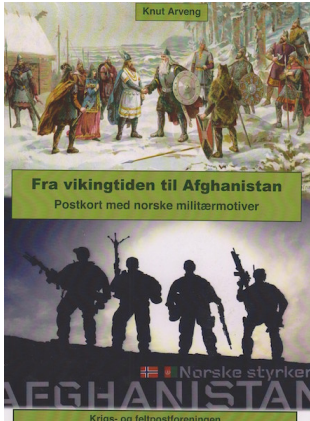
Finnish Postage Rates 1875-2001.

Chronologically arranged tables displaying a range of Finland's postage rates. Bilingual index.



Early Mail and Stampless Letter Postal Markings of Sweden.

A 130-page exhibit on this subject prepared by Alan Warren.

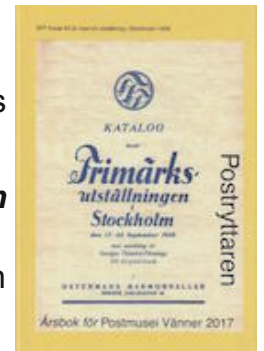


Auction catalogs of distinctive philatelic collections.

Several “name sale” catalogs from 2017 auctions include “Sweden postal history and postage due mail,” “Classic Iceland, part 3,” “Classic Denmark,” “Sweden superb copies and varieties,” and “Norway ship mail.”

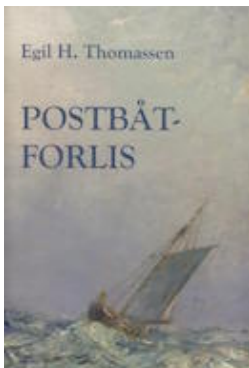
From the Age of Vikings to Afghanistan: Postcards with Norwegian Military Themes.

Picture postcards depicting Norwegian military themes from the age of the Vikings to current times.



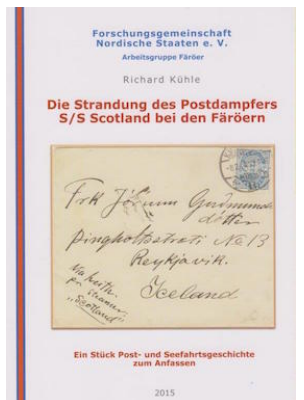
Postryttaren 2017.

For years, the Swedish Postmuseum has published outstanding philatelic research articles in its annual edition of Postryttaren. The 2017 edition is now at the SCC Library.



Stockholm Relief Societies and Faroese Shipwreck.

Military and postal historians may be interested in two recent German-language books (titles translated): The Foreign Relief Societies in Stockholm during the First World War, and The Wreck of the S.S. Scotland Steamship in the Faroe Islands.



Mailboats Lost: 1691-1907

Details the loss of more than 80 open mail boats that crashed along the Norwegian coast in the 18th and 19th centuries. Especially useful for those seeking to identify salvaged mail.

Post for All: The Story of the Finnish Postal Service, 1638-1998.

A 360-year history of the Finnish Post.

Handbook of Finnish Postmarks, Vol. VIII, Message Cancellations.

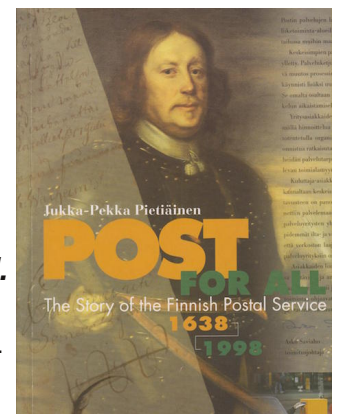
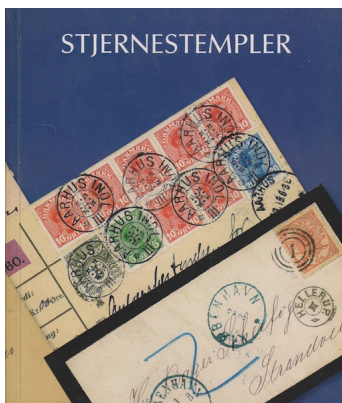
Compilation of 1920s-1980s machine cancels with text and pictorial messages.

Event and Pictorial Postmarks of Finland, Vol. II.

Illustrated listings of tourist, pictorial, and special occasion postal cancellations of Finland from 1920-1982.

Star Postmarks (Stjernestempler).

Priced catalog of concentric circle, star, and star-removed Danish postmarks.



The Foreign Relief Society in Stockholm during the First World War.

The postal history of the German Foreign Relief Society formed in Stockholm in 1862 and seeing its operations increase dramatically in World War I. Illustrations include mail concerning prisoners of war and internees in Russia.