

# The Posthorn

Sponsored by the  
**Scandinavian Collectors Club**  
of NEW YORK, N. Y.

Editor, Carl E. Pelander, 545 Fifth Ave., New York 17, N. Y.  
Carl H. Pihl, Assistant Editor

Volume 4

July 1947

Number 3

## A Preliminary Report on Plating of Sweden No. 8

by Curt I. Johnson

4

18



14

2

A block of the reprints that has been reconstructed from  
information presented in this paper.

While it is true that some students of Swedish stamps have done a great deal of work with the 12 ore Coat of Arms of 1858 popularly known as Scott

No. 8 and 9, it has received very little attention from collectors in general. Ninety years old next year yet it can still be bought for a few cents in used condition, and it is not unusual to find a few copies in inexpensive stamp packages. The fact that it is not difficult to obtain makes this stamp that much more attractive and interesting to those collectors who know what to look for. It is not suggested that you may find the very rare item that is printed on both sides of which only three unused and two used copies are known. It is, however, possible to find the less rare, but nevertheless desirable copies of several varieties that are well known among Scandinavian specialists and recognized in handbooks and catalogs used by collectors of Scandinavian stamps. Those most frequently listed are:

1. ÖRF instead of ÖRE.
2. ORE instead of ÖRE.
3. White wedge through S in SVERIGE.
4. 1/2 for 12 in upper right corner.
5. 42 for 12 in upper right corner.
6. Period in G in SVERIGE.
7. Long vertical break from SV to TOLF.

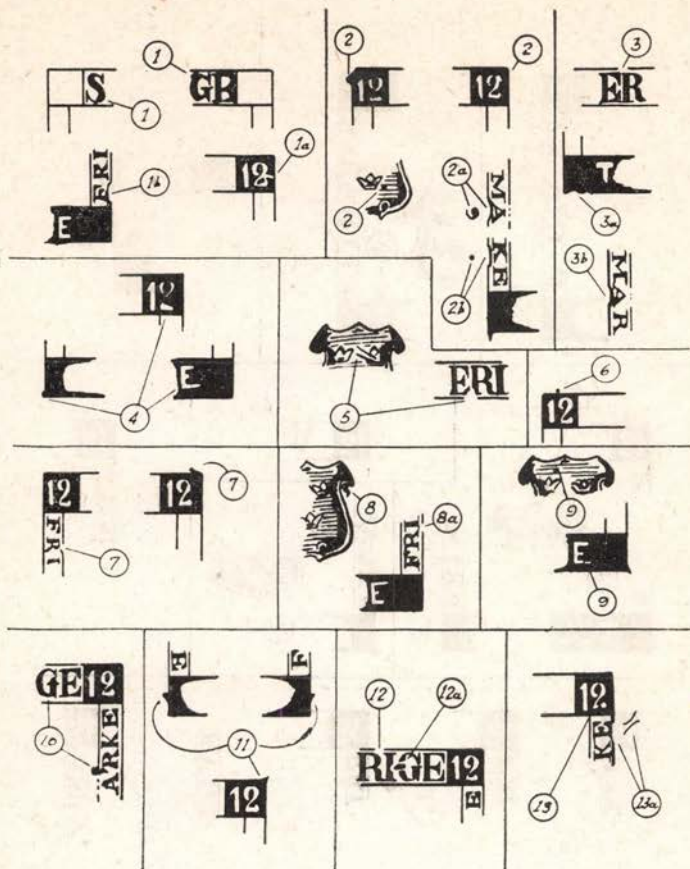
In addition to the above there are rumors of an inverted 2 in 12 in the upper right corner.

These are the spectacular varieties that can be readily detected by the unaided eye but there are others which may be detected by a closer observation. These other varieties are of a more constant nature because they were produced as a result of the crude method employed in making the two plates from which about 106,000,000 stamps were printed between the years 1858 and 1872. The soft electro-deposited copper from which the matrix and the plates were produced aided also in the birth of plate differences. In conjunction with any attempt to plate these stamps such constant plate flaws are highly interesting. An attempt will be made in this paper to list such plate flaws which have been established as constant beyond doubt. No major varieties have been listed here of which less than 20 stamps have been identified.

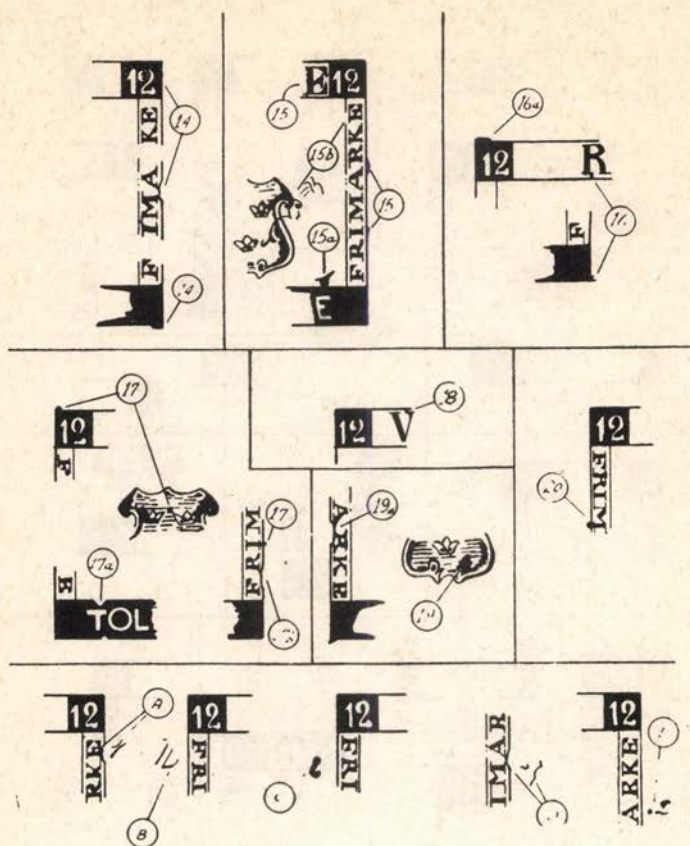
The plates for this issue were made by electrolytically depositing copper on a steel master to produce a matrix. Twenty-five of these negatives or secondary masters were soldered together to provide the matrix for a quarter plate. Copper was again deposited electrolytically and eight positives made that had twenty-five subjects. The quarterplates thus produced were soldered together into two printing plates with 100 subjects each. Any flaws produced in the secondary masters would therefore be repeated four times in symmetrical locations on each printing plate. It was interesting to note during the study that preceded this paper that a number of the plate varieties listed here had a frequency ratio of very close to 4%. It is fair, therefore, to assume then that these plate flaws were constant for the 14 years the issue was printed and that they appeared 4 times on each plate.

From time to time some of the subjects on the plates became damaged and had to be replaced which would account for the variation in the frequency ratio. This ratio has been included in the listing that follows for the benefit of those who may wish to further study this issue. Also included in the listing is the earliest date the author has been able to establish for the particular plate flaw, and in four cases it has been noted that the flaw appears in the reprints. Letter suffix to the major variety denotes a minor variety that have plate flaws in addition to those of the major item.

1. 4%—1858 Enlarged portion of S in SVERIGE ends abruptly at the lower end. Upper portion of G in SVERIGE is enlarged.
  - a) White line over tail of 2 in upper right 12.
  - b) Dented frame under F in right FRIMARKE.
2. 3%—1861 Also Reprint. Hump on upper right 2. Sawtooth projection on upper left corner. Small dot to right of lower crown.
  - a) Dented frame under A in left FRIMARKE sometimes with mark in margin from screwhead impression.



3. 3.5%—1861 Broken frame over ER in SVERIGE.
  - a) Pronounced wave in frame at lower left.
4. 3%—1861 Also Reprint. Thin 2 in upper right 12. Projection at lower left corner. Lower bar of E in ORE tapered.
5. 3.5%—1861 Broken upper right crown. Background lines between crowns tilted. Damaged inner frame and lower part of ER in SVERIGE.
6. 3.7%—1861 Small dot in margin over upper left 12.
  - a) Damaged frame under A in left FRIMARKE.
  - b) Damaged frame under RI in left FRIMARKE.
7. 2.4%—1863 Jagged frame in upper right corner. Broken inner frame over R in right FRIMARKE.
8. 4.3%—1859 Large irregular dot under upper right curi of shield. Upper horizontal bar of E in ORE tapered.
  - a) Broken frame under I in right FRIMARKE.
  - b) Broken frame under M in right FRIMARKE.
9. 4.1%—1861 Small dot between 3rd and 4th background line in shield. Lower right corner pointed. Lower horizontal bar of E in ORE has step.
10. 3.4%—1865 Dot in opening of G in SVERIGE. Damaged inner frame over AR in right FRIMARKE.
  - a) Large irregular dot to right of lower crown in shield.
11. 3.3%—1865 Sawtooth projection at lower right and left of frame. Upper right corner pointed.
  - a) Large white spot to left of TOLF,



12. 3.7%—1861 Broken frame line over RI in SVERIGE.
  - a) Period in G in SVERIGE. This is listed in Swedish handbooks as stamp No. 40 in the sheet. Thus broken frame lines should appear as stamps No. 35-40-85-90.
13. 3%—1863 Small dot in tail of 2 in upper right 12.
  - a) Damaged frame under E in right FRIMARKE. Also margin lines which may have been produced by impressions from plate clamping screws in the plate margin. The damaged frame on this stamp and many others may have been caused by a slipping screwdriver.
14. 3%—1861 Also Reprint. Damaged 2 in upper right 12. Damaged frame under MA in right FRIMARKE. Rectangular projection in lower right corner.
15. 4.7%—1861 Vertical portion of E in SVERIGE ragged. This same E has center bar convex upward. Enlarged frame under A in right FRIMARKE.
  - a) Large, dark, T-shaped spot over E in ORE.
  - b) Large white spot over E in right FRIMARKE. Twigglike overprint on right edge of shield.
16. 3.1%—1861 Lower vertical portion of R in SVERIGE joined to inner frame. Ragged projection at lower right corner.
  - a) Rectangular projection at upper left corner.
17. 3.4%—1861 Blunt projection at upper left corner. Small dot between upper two crowns.
  - a) White notch over T in TOLF. Also small white dot to left of TOLF.

18. 4.4%—1861 Also Reprint. Right leg of V in SVERIGE joined to upper frame line. Edge of lower frame is concave.
19. 3.6%—1861 Lower right curl in shield damaged.  
a) Damaged frame line under AR in left FRIMARKE.
20. 2%—1865 Dot in frame line under I in left FRIMARKE.

In the description of 13a we touched briefly on screwhead impressions, additional marks of that nature are shown in illustrations marked A to E. There are others, but these illustrations represent those that are most commonly found. It should be noted that 2a, 2b and 13a also fall in this category. Illustration B is interesting in that it shows the complete screw slot. Others may be found that show a complete impression of the screw head. If the location of the screws in the printing plates could be determined, it would serve as an aid in the plating of this issue.

A partial plating of this stamp has already been accomplished as indicated by the photograph of a block of four of the reprint. Lack of multiple pieces of this stamp has made it impossible to submit a complete report at this time. It is hoped that the listing in this preliminary report will serve as a guide to those specialists who have material available which may be helpful in establishing the proper plate positions of the listed plate flaws. The author will be very pleased to hear from anyone who has information to offer on this issue or who would like to do further research along these lines.

---

## Club News

Due to lack of space we are sorry to omit from this issue the regular features, such as Reports of Meetings, Chapters, Hornblower, etc. These, however, will be back in our October Issue.

**MEMBERSHIP DUES:** Our treasurer reports that several members are still in arrears of their 1947 dues. If you are among those, please send in your remittance at once, because this is the only thing that keeps this publication going. The club went overboard with the CENTENARY ISSUE of the Posthorn and even tho our treasury could not afford this expenditure, the members felt that it was an occasion which would not come again for many years, hence a deficit of \$312.00 on the show, which will take us two years to make up with our present income. That is why we make this appeal to those who are in arrears to make out a check or money order at once, payable to George Wiberg, 45 East 85th St., New York 28, N. Y.

**INITIATION FEE:** In order to help our present defunct treasury, the membership at the June meeting voted unanimously to charge an initiation fee from all new members of \$1.00, so as to keep the dues at the present level.

**SALES CIRCUIT:** This feature is now an established fact and is operating nicely. Our sales manager Mr. Anker B. Grummen reported sales during May of \$229.62, he states that when sufficient material will be on hand, the sales no doubt will increase considerably. If you wish any of the books or have stamps to dispose of, please state your needs and write Mr. Anker B. Grummen, 4859 Long Branch Ave., San Diego 7, Calif.

**NEW CHAPTERS:** In our October issue of the Posthorn, we hope to report on the following new chapters in formation: No. 5 Springfield, Mass., No. 6 San Francisco, Calif., No. 7 Boston, Mass.

**THE HORNBLOWER:** Our good sleuth reports a lot of savory gossip he heard during the Centenary Exhibition, which you will enjoy later on.

## Many Members Gain Cipex Awards

by Carl H. Pihl



(Photo by Adrien Boutrelle)

### Club Lounge

Seated Left to Right: Frank Maybury, John H. Olsen, Einar Ernst, Max Wiggins, Roland Anderson, Valdemar Weiergang, at table: N. T. Sellman and Carl E. Pelander. Standing: Roland D. Morse, Capt. Robert Scherer, Olaf Nagel and James B. Green.

Members of the Scandinavian Collectors Club received twenty-nine awards in competition during the Centenary International Philatelic Exhibition which was held from May 17th to 25th, 1947 in Grand Central Palace, New York City. The largest number of awards were firsts—members of the club winning ten. It is doubtful whether any other club of comparable size can boast of such an achievement. Ours is a club consisting of many first-rate philatelists, especially when it is considered that the competition at the show was extremely keen.

Caroline Prentice Cromwell garnered two coveted First Awards, one for her 20th Century Collection of United States and the other for her British Empire. Many persons at the show felt that William F. Foulk's collection of Norway Number One, which won a First Award, was one of the finest collections in its group. It was undoubtedly in the running for an award of honor. Harry M. Konwiser, Vice President of the club, was awarded a First for his Texas Republic Collection, Arthur Linz received a First Award for his excellent collection of Peru while former president Frank E. Maybury gained another First for his complete and well-mounted collection of Denmark.

Apparently the jury could find very little to choose between the Danish West Indies specialized collections of our President, Ferrars H. Tows, and Michael Miller because they both received First Awards for their splendid collections. Valdemar Weiergang also received a First Award for his specialized

collection of Iceland while Marcus W. White earned another First for his famous collection of Envelopes.

In addition, members of the club won four Second Awards, eight Third Awards and seven Fourth Awards. A complete list is given below. Congratulations to all of these members whose exhibits were honored at this great international show. May it inspire many other members to build up collections that will become the prize winners of future competitions.

## List of Awards

## First Awards

Caroline Prentice Cromwell	20th Century United States
Caroline Prentice Cromwell	British Empire (General Collection)
William F. Foulk	Norway Number One
Harry M. Konwiser	Texas Republic
Arthur Linz	Early Peru
Frank E. Maybury	Denmark
Michael Miller	Danish West Indies
Ferrars H. Tows	Danish West Indies
Waldemar Weiergang	Iceland (1873-1918)
Marcus W. White	United States Envelopes

## Second Awards

Fay Jordan	Bunch of Violets
Stephen G. Rich	Telegraphs
Stephen G. Rich	Poland
Robert G. Stone	St. Thomas

## Third Awards

Edwin E. Elkins	Penny Black
Edwin E. Elkins	Airmails and Blocks
Sidney Lake	Curacao
Harry L. Lindquist	U. S. Postal and War Savings Stamps
Carl H. Pihl	Sweden (Cancellations)
Stephen G. Rich	British Africa
Stephen G. Rich	Italy
Stephen G. Rich	Bavaria

## Fourth Awards

Anna V. Elkins	Red Cross, Charity and Semi-Postals
Joseph Jaeger	Iceland
Stephen G. Rich	Cape of Good Hope
Stephen G. Rich	France
Stephen G. Rich	Uruguay
Robert G. Stone	Guadeloupe and Martinique
Dr. Arthur Swenson	Sweden (1891-1912)

Everyone probably knows by this time that the Exhibition was a great success, financially as well as philatelically. Total paid attendance for the ten days exceeded was close to 200,000. It should be a considerable source of pride to all members to know that a large number of your fellow members had important roles, some more prominent than others, of course, in the successful conduct of this Exhibition. Harry L. Lindquist, one of our Honorary Members, as President of the entire Exhibition and Chairman of the Executive Committee, did an outstanding job which has earned for him the well-deserved plaudits of the philatelic world. Mr. Lindquist was greatly honored during the Exhibition by having his name added to the Roll of Distinguished Philatelists of the Philatelic Congress of Great Britain. Harry worked very hard for the past two years preparing for the show and its tremendous success is a tribute to his organizing genius, skill, energy, diplomacy and leadership.

Edwin E. Elkins, former president of the club, was Secretary of the Exhibition and worked tirelessly and efficiently in a difficult job. Other members who gave of their time and effort to help put over the show are:

Sidney F. Barrett	Dealer Activities
John Boyce	Historian
Caroline Prentice Cromwell	Representative
William F. Foulk	Representative
Sol Glass	Collector Activities

Harry M. Konwiser	Bin Room
Vincent Lopez	Publicity
John H. Olsen	Wounded Veterans
Carl E. Pelander	Printing
Carl H. Pihl	Hotel Reservations
Ignatz Reiner	Guides
Stephen G. Rich	Frame Mounting
Ferrars H. Tows	Representative
Marcus W. White	Representative

Five of our members served on the International Jury for the Exhibition. These gentlemen worked long and diligently in order to examine the nearly one thousand entries in the competition. The following members served on the jury:

G. A. Hagemann	Denmark
Abr. Odfjell	Norway
Vincent Domanski, Jr.	United States
Sol Glass	United States
John H. Hall, Jr.	United States

Among the members who contributed material to the Court of Honor, where classic issues of all nations up to 1870 were exhibited, were:

John Boyce	John H. Hall, Jr.
Vincent Domanski, Jr.	Harry M. Konwiser
Anna V. Elkins	Sidney Lake
Edwin E. Elkins	Harry L. Lindquist
Sol Glass	Michael Miller
G. A. Hagemann	Carl E. Pelander

Ferrars H. Tows

It was a real pleasure for the members of the club who reside in the vicinity of New York City to greet the many members from all over the United States—as far away as California—who visited our lounge at the show. We wish we could list the names of all those who signed the guest book but, unfortunately, space does not permit. (See the Hornblower's column for the social highlights of the show). In addition, there were a goodly number of visitors from foreign lands, especially the Scandinavian countries, who stopped in to say "hello," "hilsen," "god dag" and so on. At times the lounge sounded like a sub-committee of the United Nations was holding a meeting there. During the show your lounge committee added several dozen new members to the club. The names of these new members are listed elsewhere in this issue. Incidentally, the members who worked in the lounge during the show deserve a rising vote of thanks for a job well done. Frank E. Maybury was Chairman of the Lounge Committee and many members helped him do a splendid job.

While we are talking about a job well done, a couple of orchids are due Carl E. Pelander for the excellent job he did on the special Exhibition Issue of The Posthorn. From cover to cover, it is packed with interesting and useful material. Not the least of Carl's troubles was finding a printer who could obtain the necessary paper and handle the presswork. Extra copies of this issue are still available at fifty cents each to anyone desiring them.

And thanks also are due to John H. Olsen who originated the idea of the special cacheted cover to Norway on May 17, 1947, which was Norway's Constitution Day as well as the opening day of the Exhibition. This idea was extremely well received and over a thousand covers were mailed from the special post office in Grand Central Palace. The first envelope, containing a letter of greeting addressed to His Majesty King Haakon VII of Norway, was mailed by Consul Elovius Mangor, representing the Norwegian Consul General in New York City, in fitting ceremonies in the Court of Honor at the Exhibition. Prior to this Consul Mangor was the Guest of Honor at a luncheon in the Hawaiian Room of the Hotel Lexington, attended by a goodly number of our members. Several charming girls attired in the various native costumes of Norway attended the luncheon as well as the ceremonies that followed, at which Harry L. Lindquist was Master of Ceremonies. The young ladies, along with many others wearing the native costumes of Sweden, Finland and various other nations, also took part in the official opening ceremonies of the Exhibition.





(Photo by Adrien Boutrelle)

Harry L. Lindquist presenting the Norwegian Consul Elovius Mangor the first of the Scandinavian Collectors Club's cacheted letters, which was mailed to His Majesty King Haakon of Norway. Left to right are Harry L. Lindquist, Ernest Bertrand, Canada's Postmaster General, Consul Mangor, Carl E. Pelander, and five lovely Norwegian girls in National costumes. Over the shoulder of Mr. Bertrand may be noted Ferrars H. Tows, President of the S. C. C. and in back of Consul Mangor is Valdemar Weiergang.

## New and Recent Issues

by Thorsten Ingeloff

### DENMARK

Dec. 14, 1946

#### Tycho Brahe Commemorative Issue

Issued in commemoration of the 400th anniversary of the death of the world-renown Astronomer and Mathematician. The design was adopted from an old oil painting, the stamp being engraved by Sven Ewert and printed by the P. O. Dept. printing works, perforated 12½.

20 ore red.

Febr. 11, 1947

Engraved

Unwatermarked

Perf. 13x12½

2 kr. red

Issued to complete the high values of the "Lions and Hearts" design.

May 4, 1947

#### Semi-Postal Issue

Issued in memory of Denmark's struggle for liberation. The surtax was for the benefit of the Liberty Fund. The stamps were engraved by Sven Ewert.

Engraved

Unwatermarked

Perf. 12½

10 o. + 5 o. green

20 o. + 5 o. red

40 o. + 5 o. dull blue



## FINLAND

Dec. 3, 1946  
Borga Issue

Commemorating the 600th anniversary of the founding of the city of Borga. Stamps were designed by Mrs. Signe Hammarsten-Jansson and printed by Finland's Bank printing works on unwatermarked paper, perf. 14. 3,000,000 sets printed.

5 m. slate (City Hall in Borga)

8 m. rose violet (Bridge over Borga river, with the old historic Cathedral in the background)

Dec. 14th 1946  
Ekenas Issue

Commemorating the 400th anniversary of the founding of the city of Ekenas. The stamp was designed by Mrs. Signe Hammarsten-Jansson and printed by Finland's Bank's printing works on unwatermarked paper, perf. 14. 3,000,000 copies printed.

8 m. green (view of town, with harbor in foreground)

1947

Change of Colors, Lion Type Stamps of 1930

Typographed Unwatermarked Perf. 14

2½ m. green (Jan. 20, 1947)

6 m. orange red (Jan. 20, 1947)

7 m. red (Febr. 10, 1947)

10 m. purple (Jan. 20, 1947)

12 m. deep blue (Feb. 10, 1947)

The 2½ m. rate is for printed matters, 6m for domestic and Scandinavian postcards, the 7m. for foreign post-cards, 10m. for domestic and Scandinavian letters and the 12m. for foreign letters.

Febr. 10, 1947

Mail truck Type

Engraved

Unwatermarked

Perf. 14

30 m. slate (mail truck)

**March 15th 1947**  
**President Paasikivi Issue**

Issued in honor of President J. K. Paasikivi, who was chiefly responsible for the peace with Russia and the Allies. The design was adapted from a photograph of the President. 5,000,000 copies were printed.

Engraved	Unwatermarked	Perf. 14
	10 m. slate	

**April 1, 1947**  
**Savings Bank Commemorative Issue**

Commemorating the 60th anniversary of the founding of the Finnish Postal Savings Banks. Designed by Mrs. Signe Hammarsten-Jarsson and printed by Finland's Bank's printing works on unwatermarked paper, perf. 14. 5,000,000 stamps printed.

10 m. rose violet

**April 1, 1947**  
**Anti Tuberculosis Issue**

Surcharged on the 1946 issue with new values. 800,000 sets printed, the surtax being for the benefit of the Anti Tuberculosis League.

6 m. + 1 m on 5 m. + 1 m. green  
10 m. + 2 m on 8 m. + 2 m. rose violet

**ICELAND**

1947

Four values of the Geyser and Karlsefni design have appeared with new perforations.

Engraved	Unwatermarked	Perf. 11½
----------	---------------	-----------

80 aur bright ultramarine (Geyser)  
1 kr indigo (Geyser)  
2 kr dark gray (Karlsefni)  
5 kr dark brown (Karlsefni)

**NORWAY**

**April 15, 1947**  
**Postal Jubilee Issue**

Issued in commemoration of the tercentenary of the founding of the Norwegian Post Office Department.

Designed by Per Frenger and printed by Photogravure by Emil Moestue A/3., in Oslo in sheets of 100 subjects, size 27.3 x 21.1 mm, on unwatermarked paper and perforated 13.

5 o. red-lilac  
10 o. light green  
15 o. light brown  
25 o. red orange  
30 o. gray  
40 o. blue  
45 o. violet  
50 o. red brown  
55 o. ocher  
60 o. bluish black  
80 o. orange brown

The various motives and designs on this issue will be given in a special article in this issue.

1947

The regular and Official stamp has been changed in color recently.

30 o. slate

**July 1, 1947**  
**Dass Commemorative Issue**

Commemorating the 300th anniversary of the birth of Fetter Dass, famous clergyman from the districts of Helgeland (1673-1707). Even tho a clergyman he was better known for his humour and vivid description of the habits and life of the peasants and many of his poems are still quoted by the inhabitants of these districts. Among his better known works were "Trumpet of Northern

Norway" and his "Songs of the Catechism," the last being a vesification of the Lutheran catechism to well known melodies, which are sung by the people up to this time.

The stamp represents a characteristic portrait and signature of the poet and was designed by Per Frenger. It is printed by photogravure by Emil Moestue A/S., Oslo, printed in sheets of 100 on unwatermarked paper and perf. 13.

25 o. red

## SWEDEN

December 10, 1946

### Nobel Issue

Commemorating the 50th anniversary of the death of the scientist Alfred Nobel (1833-96). Born in Stockholm of rather poor parents, his studies were mostly done at home, however, later in life he travelled extensively in Russia, Germany, France, U. S. A. and Italy. Perhaps the best known of his inventions was that of dynamite, he also invented the use of nitroglycerine as an explosive and the smokeless gun powder was named after him (Nobel powder).

The name of Alfred Nobel, to-day, is more often associated with the famous "Nobel Foundation," created by the inventor, to award and distribute prizes to leading personalities throughout the world.

The stamps were designed by the artist Einar Forseth and engraved by Sven Ewert and printed by the Royal Swedish Stamp Printing Office.

Engraved Coil Stamps Perf. 13 vertically

20 o. carmine rose

30 o. blue

Booklet Panes of 20, perf. 13 on three sides

20 o. red

April 23, 1947

### Geiger Issue

Commemorating the Centenary of the death of the great Swedish historian, philosopher and poet Erik Gustaf Geijer (1783-1847). Born in Ransaters Bruk (Varmland), he entered the University of Upsala when he was barely 16 years old and was appointed professor of history there in 1817. Declining many important positions, both in the Church as well as in the Cabinet, he preferred to continue his career as an historian. Geijer is also well known as a poet and composer, and his musical compositions are well loved and treasured in Sweden.

The stamps are designed by Einar Forseth and engraved by Sven Ewert. They are printed by the Stamp Printing Office of the Royal Postal Administration.

Coil Stamps Perf. 13 vertically

5 o. green

90 o. light blue

Booklet Pane of 20 stamps, perf. 13 on three sides.

5 o. green

There are two types of coils in this issue, coming from rolls of 100 and 500 stamps respectively.

## INTERESTING FACTS REGARDING NEW ISSUES, reported by T. Ingeloff

### Denmark:

The paper situation which temporarily forced the discontinuance of booklets, has somewhat improved, allowing various P. O. branches to receive new supplies. The current booklet is numbered H 59.

There has been nothing further heard regarding the proposed "Widows and War Orphans" charity set, perhaps the "Liberty Fund Issue" placed on sale May 4th has taken its place.

On June 27th a commemorative set of three value, viz, 15, 20 and 40 ore, will be placed on sale. These stamps are in celebration of the Centennial jubilee of the Danish State Railways.

### Finland:

A long line of commemorative stamps may be issued shortly from this country.

Peace Issue, one value with motive "Ilmarinen Plowing" from the tone poem "Kalevala."

June 1st, a 10 mk stamp honoring the Athletic Festivals. A special cancellation has been authorized for this stamp.

Aug. 23rd, Savings Bank Association stamp, designed by A. Karjalainen, Special cancel and first day of sale at Abo.

Supplementing the current Lion-type stamps, a 3 mk gray stamp will shortly be placed on sale.

The long delayed 1947 "Red Cross Issue" will soon make its appearance, it will depict motives of childrens athletic activities and will range among the better sets as only 1 million sets will be issued. The set will consist of 5 values.

Another Imperforate stamp of the "Lion type" has been found, namely the 50 penni green. So far only one sheet has been discovered, but no doubt another sheet must exist. So far there has been found three sheets of the 5 mk yellow and two of the 6 mk red. Since these rarities are purely accidental errors, the Postal Mumeum has not had a chance to acquire any of them, and in order to offset this they have ordered the Printing Office to supply them with one imperforate sheet of all new issues.

On March 8, 1947, the P. O. held an auction on accumulations of parcel cards. In spite of the depression and scarcity of money unexpected high prices were realized, for example:

Domestic 1942 mixture sold for 1,700 mk (\$12.00)

Domestic 1943 mixture sold for 900 mk (\$6.75)

Foreign mixtures sold for from 10,000 to 17,000 mk (\$70.00 to \$120.00). Each lot was by kilo box.

The following data on stamps either sold out or rendered obsolete by being demonetized:

Regular "Lion Type" stamps:

2 mk green — 67,000,000 issued

6 mk red — 10,000,000 issued

8½ mk purple — 10,000,000 issued

8 mk purple — 45,000,000 issued

10 mk blue — 10,000,000 issued

16 mk mail-truck — 2,000,000 issued

8 mk Athletic League (6-1-46) — 3,000,000 issued

Anti-Tuberculosis Issue of 1946 — 2,000,000 sets issued, but 600,000 sets were surcharged with new values (see new issues)

8 mk Lighthouse Issue (9-19-47) — 3,000,000 issued.

The P. O. in a circular letter of recent date, advised all Postmasters with the following: "Special and Commemorative Stamps are issued to call attention to memorable events in our peoples life, and therefore should be used freely from day of issue until exhausted. They should be sold to the public at all times and not only upon special request."

#### Norway:

A new set, possibly the annual semi-postals with surtax for benefit of the National Welfare, will be issued and honoring King Haakon on his 75th anniversary, Aug. 30th 1947.

#### Sweden:

The Air Post Stamps (Scott C6-7), 10 and 50 ore that were withdrawn from circulation in April 1946, were re-issued a year later and made available to the public both for regular as well as Air Mail usage, the heavy buying of these re-issued stamps soon exhausted the entire supply, and the P. O. Dept. has definitely stated that no reprinting will be made.

After much delay the Philatelic Society's handbook has finally been released. It is a handsomely bound book of 360 pages, richly illustrated and printed in Swedish. It thoroughly treats all issues from 1855 through 1946 and as an added novelty the Military Reply Stamps are dealt with in detail.

The price for this book is Sw. Kr. 15.- plus postage Kr. 1.05 or at the present exchange rate \$4.50, this may be ordered from the editor of this column, Thorsten Ingeloff, Postfack 597, Stockholm, Sweden.

## The Norwegian Postal Jubilee Issue

1647-1947

(Reprinted from the Post Office Departments official pamphlet)



The Norwegian Post Office was established in the year 1647. It was at first a private monopoly and from 1719 an Office under the Crown. From a very modest institution with a few officials and four mail services the Post Office has developed into a huge business with thousands of officials. It is running a network of different mail services all over the country. It is carrying letters, papers and parcels to the remotest corners of our wide-spread country and—in cooperation with foreign post offices—all over the world.

Every year it performs millions of money transactions mounting up to milliards of kroner.

Gradually the Norwegian Post Office has adopted every means of communication.

Mail-carrying is now entertained by the means of walking carriers and rowing boats. Rural letter-carriers are making use of bicycles and skis. And the Post Office is served by steamships, motorboats, railways, motor-cars and aircrafts.

Throughout the course of ages, in good and evil days the Post Office has contributed to the upholding of the best possible communications within the country and between Norway and the outside world.

No other State-institution is contacting the public like the Post Office.

On the occasion of its tercentenary jubilee the Norwegian Post Office has issued a series of commemoration stamps meant to illustrate important happenings in our history after 1647—as far as this is possible within the narrow frame of a stamp.

The historical motives on these stamps have been suggested by professor Sverre Steen. Besides Dr. Sig. Willoch, the curator of the National Picture Gallery and Mr. Jarle O. Stensdal, the editor of the Norwegian Philatelic Magazine, have been consulted during the process of production.

The designs of the stamps have been made by Mr. Per Frenger and printing by Emil Moestue A/S.

**5 ore:** At the time when Norway was united with Denmark, **Hannibal Sehested** was vice-regent of Norway and resided at Akerhus. The Norwegian Post Office was created on his initiative.

**10 ore:** During the early days "postal-peasants" carried mail bags from one station to another. They had no salary, but were granted certain priv-

illeges. Later these runners or carriers were succeeded by horse-riders on all main routes.

- 15 ore: **Admiral Tordenskjold** was the national hero in the Great Northern War (1709-1720).
- 25 ore: **Christian Magnus Falsen** is generally known as the "father of the Constitution." At the Constituent Assembly held at Eidsvoll in the year of 1814, Norway was granted its democratic Constitution and Fundamental Laws, the leading principles which are still in force.
- 30 ore: The year 1825 marks the beginning of Norwegian immigration to America. **Cleang Peerson** was greatly responsible for this and during the 19th century more than half a million Norwegians settled there and contributed to the white mans conquest of a new continent.
- 40 ore: In 1827 the Post Office bought the new steamships "Constitutionen" and "Prinds Carl," making runs between Norway and Denmark.
- 45 ore: The Norwegian Railways were inaugurated in 1854. Later more than 5,000 km have been laid out.
- 50 ore: This represents the important whaling industry which was revolutionized by Svend Foyn's invention, the harpoon-gun.
- 55 ore: The "Viking Spirit" is depicted on this stamp, with the two famous explorers Amundsen and Nansen. In the background is shown the famous ship "Fram."
- 60 ore: This stamp is symbolic of the Coronation of King Haakon and Queen Maud in the Cathedral of Nidaros (Trondheim) in 1905. It also brings to us the cessation of the union with Sweden in 1905.
- 80 ore: After five long years of foreign occupation came the day of liberation, May 7th 1945. Two days later King Haakon returned to Norway, which was the very day on which he had been forced to go into exile, five years previously.

## New Members

### Resident

- 429 Arne S. Erikson, 2165 Chatterston Ave., Bronx 61, N. Y. (Scan.)
- 430 Aaron Sonsky, 296 Georgia Ave., Brooklyn 7, N. Y. (Scan.)
- 474 Harry Nils Berkander, Apanoag, Warwick, R. I. (S.-N.)
- 475 Donald M. Doughty, 70 Yale St., Williston Park, N. Y. (Scan.-U. S.-Switz.-Greece)
- 476 C. R. Odden, 45 Harvard Rd., S., Garden City, L. I., N. Y. (N.-S.-D.)
- 477 Robert J. Read, 457 S. Broad St., Elizabeth, N. J. (D.)
- 478 Edgar G. Holmgren, 232 Canterbury Road, Westfield, N. J. (S.-N.-D.-U.S.)
- 479 Fred Stumann, 94-08—214th Place, Queens Village, N. Y. (D.-Germ.-Stampless U. S. Covers)
- 480 Helmer Mellstrom, 804 Lexington Ave., c/o Anderson's Agency, New York City (Scan.-U.S.)
- 481 Erik Eliassen, 354 Moshulu Pkwy., Bronx 58, N. Y. (Scan.-U.S.-Canada)
- 483 Lauson H. Stone, 41 Garden Place, Brooklyn, N. Y. (Scan.)

### Non-Resident Members

- 425 Alexis Kellogg, 1260 Library, Detroit, Mich. (Scan.-Gen.)
- 427 O. E. Swanson, 4846 Morgan St., Seattle 8, Wash. (S.)
- 428 Capt. J. A. Larsen, 1534 South 31st St., Milwaukee 4, Wis. (Scan.)
- 438 George May, 4804 Chester Ave., Philadelphia 43, Pa. (Booklets-U.S.-Can-Neth.)
- 439 John Lamberg, 8129 Lowell Ave., Skokie, Ill. (Scan.)
- 440 Samuel McCutchen, 420 N. Washington St., Hinsdale, Ill. (D.)
- 441 Sigurd Gimnes, 3050 W. North Ave., Chicago 47, Ill. (Scan.)
- 442 Carl O. Malmberg, 10235 Forest Ave., Chicago 28, Ill. (Scan.)
- 443 P. Songefest, 2420 South 13th Ave., Broadview, Ill. (Scan.)
- 444 Carl W. Swanson, 1718 Nelson Ave., Chicago 13, Ill. (Scan.)
- 445 Waldemar Nielsen, 624 Park Ave., Wilmette, Ill. (Scan.)
- 446 George T. Tobiasson, 6108 N. Maplewood Ave., Riverside, Ill. (Scan-Semi-Postals)

- 447 Dr. G. Philip Grabfield, 27 Forest St., Milton 36, Mass. (N.)  
 448 Glenn H. Feller, 2331 Penn St., Harrisburg, Pa. (Scan.)  
 449 Jens Aage Nielsen, 1127 Wells Place, Stratford, Conn. (D-D.W.I.-U.S.)  
 450 Roy Hill, 1140 Sutter St., San Francisco 9, Calif. (F.)  
 451 V. L. Bjork, Ishpeming, Mich. (Scan.-U.S.-Russia)  
 452 Clifford F. Bieber, 2327 Pierce St., Philadelphia 45, Pa. (Scan.)  
 453 J. B. Roachat, 3090 No. Cleveland Ave., St. Paul, Minn. (Gen.)  
 454 Horace P. Andersen, 31 Landsdowne Ave., Hamden, Conn. (Scan.)  
 455 Mrs. Florence B. Wordell, 1005 Maple St., Fall River, Mass. (Scan.)  
 456 Harold F. Wordell, 1005 Maple St., Fall River, Mass. (S.-U.S.)  
 457 David French, 2845 Buena Vista Way, Berkeley, Calif. (Scan.-Gen.)  
 459 L. L. Hopkins, 10 Washington Rd., Scotia, N. Y. (S.-U.S.-France)  
 460 Max M. Wiggins, 6817 Georgia Ave., Washington 12, D. C. (N.-Br. Col.)  
 461 Daniel Brody, 264 Dwight St. Ext., Springfield, Mass. (I.)  
 462 J. O. Peterson, 341 Jackson St., Gary, Indiana (Scan.-U.S.)  
 463 Thomas A. Cotter, 497 Dickinson St., Springfield, Mass. (Gen.)  
 464 Nils G. Bolin, Cornwall-on-Hudson, N. Y. (S.-Br. Col.)  
 465 Harry Christensen, 270 Hackensack St., Wood-Ridge, N. J. (Scan.-U.S.)  
 466 Hans P. Brasen, Route 1, Glen Cove, Port Townsend, Wash. (Scan.)  
 467 Gustaf B. Lindquist, 41 Nottingham Rd., Worcester, Mass. (S.-N.-I.)  
 468 Alf Thomassen, 3300 Dixwell Ave., Hamden, Conn. (Scan.)  
 469 Royal Boston Jr., 57 Exchange St., Portland, Me. (Scan.-U.S.)  
 470 Edwin P. Seebom, 273 Green St., San Francisco, Calif. (S.)  
 471 Paul Vignos, 619 12th N. W., Canton, Ohio (Europe)  
 473 Charles L. Sivertsen, 22 Glenbrook Rd., Stamford, Conn. (Gen.)

#### Foreign Members

- 423 Einar Svensen, Kopervik, Norway (N.-U.S.)  
 424 Aage Reddersen, 22 Skindergade, Copenhagen, Denmark  
 426 Matti Kaloinen, Vammala, Finland (F.-U.S.)  
 431 Sigurd Helguson, P. O. Box 121, Reykjavik, Iceland (Scan.)  
 432 Frans Rudolf Ekdahl, Birkagatan 2, Stockholm, Sweden (Scan.)  
 433 Leuto Lumme, 54 Koljontie, Tampere, Finland (F.)  
 434 Bjarni Sigurdsson, Njardargata 31, Reykjavik, Iceland (Scan.)  
 435 Karl Hjalmarson, Box 1022, Reykjavik, Iceland (Scan.)  
 436 Kaj Blom, Charlottenlund, Denmark (Scan.-U.S.-Holland)  
 437 Gunnar Granstrom, Dromstigen 13, Smedslatten, Sweden (S.-Scan.)  
 458 Gosta Genberg, Eriksbergsg. 7, Stockholm, Sweden (S.-B.N.A.)  
 472 Walter Hauschka, 4769 West 2nd St., Vancouver, B. C., Canada (Gen.)  
 482 Curt Haij, c/o Billman, Lindhagensg. 128, Stockholm, Sweden. (S. cancell. 4  
 sk b. and 12 ore)

## This and That

by Christian Zoylner

Some advertising signs in a Chinese Department store in Hongkong:  
 in Basement: NERVOUS SALE \* VERY SORRY  
 on another counter: DESPERATE BARGAINS  
 in Fur Department: MAKE COATS YOUR SKIN - MY SKIN - LADIES HAVE  
 FITS UPSTAIRS.

A little wisdom from the East:

Yellow Gold is plentiful in the World—whitehaired old friends are few.  
 One joy scatters a thousand griefs.

When the guests have gone the host is at peace.

From Socrates: Beauty is perfection in usefulness.

And from Professor Cathcart at Glasgow University:

Eat all kind Nature doth bestow—  
 it will amalgamate below.

If the mind says so—it will be so,  
 but if you once begin to doubt  
 the gastric juice will find it out.