

# The POST HORN

OFFICIAL PUBLICATION OF THE  
SCANDINAVIAN COLLECTORS CLUB

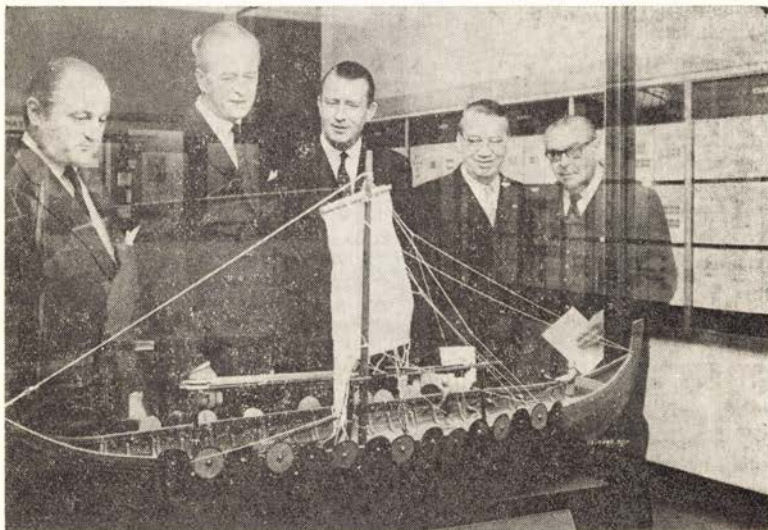
Vol. 27, No. 2

June 1970

Whole No. 104

## "Stamps and Posts of Scandinavia"

Six-nation Exhibition at Smithsonian Institution  
Washington, D. C., April 17-August 2, 1970



(Photo Larry Stevens, Falls Church, Va.)

Ambassadors (from l.) Hubert de Besche (Sweden), Arne Gunneng (Norway), Torben Rønne (Denmark), Magnus V. Magnusson (Iceland), and Olavi Munkki (Finland) view the Gokstad viking ship model at the formal opening of the 16-week exhibition "Stamps and Posts of Scandinavia." Some of the Scandinavian panels are shown in the background—and curiously enough—some displays behind the camera are visible in the reflection against the glass display case. The opening was attended by 1,268 guests (for story see last POSTHORN).

## Those Address Changes—One of Our “Headaches”

We urge all members to PLEASE let us know your address changes as soon as possible. Many do, but altogether too many don't until many issues of their POSTHORN have been lost—and then they are wondering why they have not received their copies.

Under the second class permit rules, the P. O. does NOT forward a POSTHORN addressed to your old residence. Rather, your “old” P. O. advises us of your new address (if known) on a special form—and the POSTHORN which was intended for you, is thrown out. This advice costs us 10c each. Now we send out a second POSTHORN to your new address (if known)—and have to pay either first or third class postage (dependent on weight).

Usually, the next issue will come to your new address, but there are many cases (if YOU have not notified us of your new address) in which your (old) P. O. does not follow their own rules by simply forwarding the P-H to your new address. This happens quite often, and will happen with several issues—until the clerk at the P. O. (or another clerk) does what he is supposed to do. In the meantime, we don't even know that you have moved. In some cases, the P. O. clerk will forward your P-H and slap a postage due charge on it. Recently, a member wrote us that “he's sick and tired of paying postage due for his P-H's.” We agree, of course, but as long as some P. O. clerks don't do what they are supposed to do—and we don't even know of the address change—these things will continue! Then we have the cases in which the P. O. let us know of a new address—but failed to let us know which member is involved.

All of these delays, lost P-H's, wasted postage, as well as the exhaustion of back-issues, can be avoided if you remember to let us know your new address just as soon as possible. Depending on the time (between issues) we receive your address change notification, we can in most cases have your next P-H at your new address, but normally at least your second issue (after moving) should find its way to the correct address.

We urge you to please cooperate in this matter. With as many members as we have, there will always be some “mix-up”—but we can hold it down to a minimum BY YOUR NOTIFYING US OF YOUR ADDRESS CHANGE AS SOON AS POSSIBLE. Won't you PLEASE help?

### THE POSTHORN

Official Publication of the  
SCANDINAVIAN COLLECTORS CLUB

Published bi-monthly

50c per copy or \$3.00 per year

June 1970, Vol. 27, No. 2, Whole No. 104

Second Class postage paid at Arlington, Virginia  
and additional mailing offices

Office of Publication: Arlington, Va. 22201

Advertising rates on request

Editor: R. Norby, Box 175, Ben Franklin Sta., Washington, D. C. 20044  
to whom all material and communications concerning

The Posthorn should be sent.

## Danish Booklets

A Simplified Listing of the Steel-Engraved Issues,  
1934-1963

By Svend Yort (158)

It has been many years since the definitive handbook of these booklets by A. Tholl and M. Juhl was published in 1950, and since then, there has been only a single-sheet supplement bringing it up to the end of 1954. There is, therefore, a need for a further updating, and recently I was fortunate to have the opportunity to examine an accumulation that enabled me to construct a listing up to the middle of 1963.

The Tholl and Juhl handbook is extremely detailed, giving not only the types and shades of the stamps, but the differences in the covers, coupons, and interleaves as well. The lot I was able to examine was not extensive enough for me to determine all of the differences of this kind that may exist in the later booklets, but I was able to account for almost all the "H" numbers.

Danish booklets are made up in lots or batches as required and ordered by the Post Office Department, and usually each such lot (called a "fabrication" in Danish) is identified by an "H" (for "Hefte"=booklet) and a number, which since 1937 has been printed on the back cover. Generally, all booklets of a "fabrication" are identical, and often several successive "H" numbers will be the same, but sometimes there are differences in coupons, or the lack of them, or in the interleaves, or even in the stamps themselves, contained in certain booklets with the same numbers. This is usually caused by a shortage of material of one kind or another, or by a carry-over from a previous "fabrication," and sometimes by a sudden change of rates.

The numbering system set up by Tholl and Juhl assigned a letter, rather than a number, to each booklet with different STAMP contents, but where the difference is only a matter of shade, the booklets are given the same letter, with a numeral suffix, as with R-1, R-2 and R-3, or X-1 and X-2. To forestall questions or confusion, let me explain now that the Danish alphabet does not include a "W."

I have continued this system for the 2-Kroner booklets, going on to AA, AB, etc., after reaching the end of the first alphabet. About 1958 a new series of 5-Kroner booklets appeared, and I have numbered these in a separate series starting with BA, for ease of classification, although they were issued concurrently with the 2-Kroner booklets. Note the relationship by contents of booklets AA-2 and BB; AC and BE; AD and BF.

The following listing is confined to major numbers only, but all "H" numbers for each are given, as well as some of the more pertinent information about covers and interleaves. I believe this will adequately meet the needs of most U. S. collectors of these booklets, but would like to hear from anyone who could continue the listing beyond this point.

### DENMARK — BOOKLETS — ENGRAVED ISSUES

(Numbering by Tholl and Juhl, Stella, 1950)

- A. 1934 5 øre green, 4 panes (Scott 223c)  
10 øre yellow, 3 panes (Scott 228b)  
(Cover dark green, black imprint; 3 types)

- B. 1935 H. C. Andersen (Scott Nos. 246-8-9)  
 5 øre, 3 panes 5 diff. fairy tales,  
 10 øre, 2 panes back cover, 5 diff.  
 15 øre, 1 pane G&J advertisements.  
 (Also exists with imitation leather cover)
- C. 1936 Reformation (Scott Nos. 252, 254)  
 5 øre, 4 panes  
 10 øre, 3 panes
- D. 1937 Dybbøl Mill (Scott Nos. 223d, 229b, 238A1)  
 5 øre, 2 panes  
 10 øre, 1 pane  
 15 øre, 1 pane
- E. 1937 5 øre green, 4 panes (Type I, Scott 223c)  
 10 øre brown, 3 panes (Type IA, Scott 229a)  
 (Cover dark green, black imprint)
- F. 1937 Chr. X Jubilee (Scott Nos. 258, 259, 260)  
 5 øre, 3 panes  
 10 øre, 2 panes  
 15 øre, 1 pane
- G. 1937 5 øre green, Type I, 3 panes (Scott No. 223c)  
 10 øre brown, Type IA, 2 panes (Scott No. 229a) H-24, 25  
 15 øre red, Type II, 1 pane (Scott No. 238Ak)  
 (Cover dark green with black imprint; 2 types)
- H. 1938 Same( except 10 øre Type II H-25
- I. 1938 Same, except 5 øre and 10 øre both Type II H-24 to 27
- J. 1939 5 øre lake, 3 panes (Scott No. 224a)  
 10 øre violet, 2 panes (Scott No. 230a) H-27 to 31,  
 15 øre red, 1 pane (Scott No. 238Ak) also unnumbd.  
 (Cover dark green, black imprint; 3 types)
- K. 1940 5 øre lake, 4 panes (Scott No. 224a) H-31 and  
 10 øre violet, 3 panes (Scott No. 230a) 34 to 40  
 (Cover dark green øblack imprint; 1 type)
- L. 1940 Red Cross  
 10+5 øre and 10 øre (2 each), 4 panes (Scott 230b) H-32
- M. 1940 Red Cross  
 5+3 øre, 5 panes (Scott B-9a) H-33  
 10 øre Numeral, 1 pane (Scott 230a)
- N. 1943 Red Cross, same except 10 øre Chr. X (Scott 280a) H-33
- O. 1941 Child Welfare  
 10+5 øre, pane of 10 (Scott B-12a)  
 5 øre lake, pane of 10 (Scott 224b) Unnumbd.  
 (8 varieties of last page)
- P. 1944 Red Cross (Round Tower)  
 10+5 øre, pane of 10 (Scott B-14a) H-45  
 5 øre lake, pane of 10 (Scott 224b)
- Q. 1943 5 øre lake, 4 panes (Scott 224a) H-40  
 10 øre violet, Chr. X, 3 panes (Scott 280a)  
 (This booklet came about because there were not  
 sufficient 10 øre Numeral type to complete  
 Fabr. H-40)
- R-1. 1943 5 øre lake, 2 panes (Scott 224a) H-41 to 51,  
 10 øre violet, Chr. X, 4 panes (Scott 280a) except 46

(Many different colors of covers and coupons due to war-time shortages, also two types of imprints. H-45 had been assigned to the Red Cross booklet (P), but by mistake one lot of covers for this booklet was numbered 45 instead of 46.)

- |      |      |  |                   |
|------|------|--|-------------------|
| R-2. | 1945 | Same, except 10 øre light violet<br>(H-51 with light green covers and black imprint; rest orange with red imprint)   | H-51 to 54        |
| R-3. | 1946 | Same, except 10 øre gray violet<br>(By mistake, two lots of covers were numbered H-55, and there was no H-56. The correct H-55 is the one without "Børnernes Kontor". Many booklets of this series are found with corrected rates.)  | H-55 and 57 to 59 |
| S.   | 1947 | 5 øre Numeral, lake, 2 panes (224a)<br>10 øre Chr. X, gray violet, 1 pane (280a)<br>10 øre Chr. X, light green, 2 panes (281a)<br>(Many different colors of covers; H-64 and part of H-63 with only two interleaves instead of 6 as formerly)                                    | H-60 to 64        |
| T.   | 1948 | 5 øre Numeral, lake, 2 panes (224a)<br>10 øre Numeral, violet, 1 pane (230a)<br>15 øre Chr. X, light green, 2 panes (281a)<br>(Covers orange with red imprint. H-64 with 2 new interleaves. H-55 with six interleaves as before, was the remainder of a reserve stock of covers) | H-55, 64, and 65  |
| U.   | 1948 | 5 øre Numeral, lake, 2 panes (224a)<br>10 øre Numeral, violet, 1 pane (230a)<br>15 øre F. IX, Type II, green, 2 panes (306b)<br>(Covers orange with red imprint)   | H-65 to 69        |
| V.   | 1949 | Same except 15 øre Type III (306ab)<br>(All are found with corrections of rates, exc. H-72, new rates 1-6-50.)   | H-69 to 72        |
| X-1. | 1950 | 5 øre Numeral, lake, 2 panes (224a)<br>10 øre Numeral, green, 1 pane (318a)<br>15 øre F. IX, gray violet, 2 panes (319a)<br>(Covers orange with red imprint; only one type. H-78 also with corr. rates)  | H-73 to 73        |
| X-2. | 1952 | Same except 15 øre light violet (319ba)<br>(H-78 with corrected rates only; others with new rates from 1-7-52)   | H-78 to 80        |
| Y.   | 1953 | 5 øre Numeral, lake, 1 pane (224a)<br>10 øre Numeral, green, 1 pane (318a)<br>15 øre F. IX, light violet, 1 pane (319ba)<br>20 øre F IX, brown, 1 pane (320a)<br>(Note: H-90 and 91 not seen, may belong to this group or the next)  | H-81 to 89        |
| Z.   | 1955 | 5 øre Numeral, lake, 1 pane (224a)<br>10 øre Numeral, green, 2 panes (319a)<br>25 øre F. IX, light violet, 1 pane (354)<br>(Covers orange, red imprint, one type)  | H-92 to 97        |

AA-1.	10 øre Numeral, green, 2 panes (318a) 30 øre F. IX, red (A-61) 1 pane (335) (Covers orange, red imprint, one type; size 47 x 67 mm. as before)	H-98 to 102
AA-2.	Same, but covers dark yellow, size 45 x 83 mm., with extra leaf folded in; black imprint.	H-103
AA-3.	Same, covers similar to preceding, but size 45 x 75 mm.	H-104 to 111
AB.	10 øre Numeral, green, 2 panes (318a) 30 øre F. IX, red (A-86), 1 pane (383) (Cover similar to AA-3)	H-112 to 115 and 115L
AC.	5 øre Numeral, lake, 2 panes (224a) 10 øre Numeral, green, 1 pane (318a) 30 øre F. IX, red (A-86), 1 pane (383) (Covers similar to preceding; all issues contain additional sheet of new rates from 15 April 1963. "x" numbers are fluor.)	H-116, 116x, H-117, 117x
AD.	5 øre Numeral, lake, 1 pane (224a) 10 øre Numeral, green, 1 pane (318a) 35 øre F. IX, red, (A-86), 1 pane (384a) (Covers similar to preceding; rates as of 15 April 1963)	H-118L

#### NEW SERIES — 5 Kr. BOOKLETS

BA.	10 øre Numeral, green, pane of 20 (318) 30 øre F. IX, red (A-61), pane of 10 (335) (Covers red with black imprint; size 45 x 75 mm., without fold-in leaf. Stamps pasted in instead of stapled)	H-2, also unnmbd.
BB.	10 øre Numeral, green, 2 panes of 10 (318) 30 øre F. IX, red, (A-61), pane of 10 (335) (Covers white with red imprint; size 45 x 83 mm. with fold-in third leaf like AA-2. Stamps stapled in.)	H-3 to 6
BC.	10 øre Numeral, green, strip of 5 (318) 30 øre F. IX, red (A-61), strip of 5 (335) 30 øre F. IX, red (A-61), block of 10 (335) (Covers same as preceding).	H-7 to 10
BD.	10 øre Numeral, green, strip of 5 (318) 30 øre F. IX, red (A-86), strip of 5 (383) 30 øre F. IX, red (A-86), block of 10 (383) (Covers same as preceding; H-11 old rates, H-13 and 14 new rates)	H-11 to 14 and 14L
BE.	5 øre Numeral, lake, 2 panes of 10 (224b) 10 øre Numeral, green, 1 pane of 10 (318) 30 øre F. IX, red (A-86), 1 pane of 10 (383) (Covers same as previous; new rate sheet inserted, dated 15 April 63)	H-15L
BF.	5 øre Numeral, lake, pane of 10 (224b) 10 øre Numeral, green, pane of 10 (318) 35 øre F. IX, red (A-86), pane of 10 (384a) (Covers same as preceding; new rates)	H-16L to H-18L

## Sweden's New Return Postage Stamps

By R. Norby

As many know, the Swedish Postal Administration has approved the issuance of special "return postage paid" stamps for the magazine "Det Bästa" (the Swedish edition of Readers Digest). These stamps began to appear in late 1968, and have been continued in 1969 and 1970, in various designs and colors.

There has been much disagreement in Europe about the "validity" of these stamps, from collectors and their organizations, as well as other non-philatelic sources. The fact that these stamps have been issued for the use of ONE commercial organization naturally added to the complaints. We have deliberately not entered the discussions, in spite of pro and con articles in several journals of stampdom in Europe (Sweden, England, Holland, to mention a few), feeling that we should "wait and see."

It is not our intention to take sides in this matter, but simply bring to our members the facts as we have received them, and then let the collectors decide for themselves—whether to collect them, ignore them, or whatever.

We are indebted to the agent for the distribution of these stamps, **Rolf Gummesson** (Kungsgatan 55, 111 22 Stockholm, Sweden) for the following data (he's also an SCC-er, by the way).

It seems that for many years, the magazine "Det Bästa") would place regular postage stamps on cards and other mailing pieces which its readers would send in. Much like the stamped return envelopes one sometimes receives from commercial organizations that are interested in thus making the return mailing easier (and cost-free) for its customers and/or prospective customers. But naturally, this led to "misuse" by many who would use the stamps for paying postage on other mail, and "Det Bästa" became the involuntary "sponsor." In order to avoid this, the special "return postage paid" stamps were produced with the approval of the Swedish postal authorities. The return card or envelope from "Det Bästa" now had the special stamp affixed, and could not be used for any other purpose but the mailing (pre-paid) back to the magazine. Thus, only the legitimately used return mailings are paid for, and the magazine saves a lot of money.



Mr. Gummesson points out that the new stamps were not of particular interest to collectors in the beginning, many regarding them simply as another form of labels. The thought that deliberate speculation was involved in the sale and distribution of the stamps was also expressed, but if such were the case, he points out, the Swedish P. O. D. would hardly have approved of the

idea, but less the continuation of the production and use of the stamps.

In the meantime, the German Michel catalog has included these stamps in a section called "Antwort-Portomarken," and has given them "main" numbers. The following list of the so-far issued stamps is taken from Michel:

1968 No. 1—Letter-carrying pigeon, light red and black, vert. perf. 11

1969 No. 2—Same, but bright red, and vert. perf. 12¾

3—Same, but blue, vert. perf. 12¾

4—Same, but red and black, vert. perf. 12¾

5—Same, but blue and black, vert. perf. 12¾

6—Horsedrawn mail coach, green and black, vert. perf. 12¾

1970 No. 7—Same, but red and black, vert. perf. 12¾

Nos. 1-5 are 20 mm high by 40 mm wide, while Nos. 6-7 are 21 mm high by 41 mm wide.



A green-and-black stamp in the pigeon design (in two very slightly different "types," one with and one without a cloud formation to the left) was an experimental "proof" and was not issued.

So—there you have it! If you are interested in securing these stamps, we suggest you contact Rolf Gummesson, who advises us that he will deliver mint and used (on card or cover) copies at reasonable prices as long as his supply lasts.

As is well known, no stamp club or society should tell its members what to collect and not collect. As we see it, these stamps are for the exclusive use of one commercial organization, and thus not readily available for sale to the public at the post offices, and their use is restricted. Yet, they are produced and used with the approval of the Swedish postal authorities. They are now included in the Michel catalog. Those are the facts. You take it from there . . .

As an after-thought, we can't help but wonder why the magazine could not use (or cause to be used) the business reply mail system so well known and long used in this country, whereby no postage is necessary by the "postage will be paid by . . ." imprint on the card or envelope.



Help Yourself and support the S. C. C. by  
**Advertising in The Posthorn**

\* S \* C \* C \*

### Members' Bulletin Board

Have something to sell your fellow-members? Something you would like to buy? Information you'd like to secure? Or anything else you'd like to tell the membership?

Then our MEMBERS' BULLETIN BOARD is the place! THE POSTHORN will accept ads of limited size, and for SCC members only, for \$1 per ad per insertion. These "boxes" have a text area of about 2x7/8" and are limited to 6 lines (fewer lines with heavier type).

#### NEW ISSUE SERVICE

Scandinavia — Western Europe  
 Back issues available

**WALTER H. HINZ**

5 No. 6th St.  
 Vineland, N. J. 08360

#### GREENLAND MAIL AUCTIONS

Incl. Facit 1-3, wrappers, cards, letters. Esp. strong in cancellations

**Torben Hjørne**

Fortevej 62, 8240 Risskov,  
 Denmark

#### NORWAY "BYPOST" WANTED

on cards or envelopes  
 Buy or swap for skilling stamps

**B. Roed**

5612 California Ave. S. W.  
 Seattle, Wash. 98116

#### GREENLAND WANTED

Full (or half) sheet of Facit  
 Nos. 8, 36, 37, 38

**Lester M. Nelson**

6165 Blain Pl., LaMesa, Cal. 92042

#### WANTED SWEDEN MIXTURES

On or off paper, all large, 1964 to date, 100 or a pound, will swap or buy. Write

**Milne Ramsey**, 710-10th Ave.  
 San Francisco, Calif. 94118

#### WANTED

Early Finland, Iceland, and Sweden—used stamps

**H. J. Therp**

2 Liberty St., Petaluma, Cal. 94952

#### Denmark 32 choice copies 4RBS

All printings, full margins,  
 num. cancels. Swap or sell.

**Wallace J. Gaarsoe**

2625 Magnolia  
 Irving, Texas 75060

#### NORWAY 8 Sk. Oscar WANTED

Positions A4  
 Swap or buy

**R. NORBY**, Box 175,  
 Ben Franklin Sta., Wash. D.C. 20044

## In Memoriam

### HENRY KUHLMANN

We shall all miss Henry, it just will not be the same without him. Henry died last fall, just two days after his seventieth birthday. He was born in Oldenburg, Germany, served in the German Army in World War I, and after the war went to Sao Paulo, Brazil, where he stayed for a few years before coming to Chicago.

He carried on a stamp business in this city for forty years, much of this time in company with Olaf Nagel, now deceased.

Henry will always be remembered by stamp collectors for his frankness, honesty in dealings, and generosity to philatelic causes.

He was a member of SCC for more than twenty-five years.

James W. Nyboe, Chapter 4, Chicago

### BIRGER M. BENDIXEN

Birger M. Bendixen, a former officer of SCC Chapter 7 New York, died in May 1970 at the age of 85.

Birger was a member of SCC for many years, and always attended meetings with the kind of enthusiasm one expects from a genuinely and deeply interested stamp collector. He was also a member of Oslo Filatelistklubb and "Ridder av det Gyldne Posthorn" (Knight of the Golden Posthorn).

He was a good friend and we miss him.

Carl H. Werenskiold, Chapter 7, New York

\* S \* C \* C \*

## Scandinavian Stamp Mart

### A Message from the Mart Manager

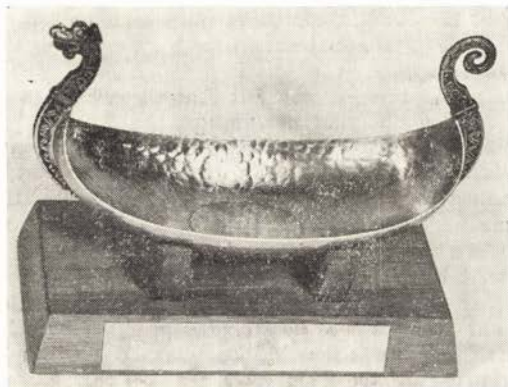
Wade H. Beery, the MART Manager, announces that—effective from 1st July, 1970—his address will be changed to:

Wade H. Beery  
7578 Alleghany Road  
Manassas, Virginia 22110

This is not a move, but merely a change of street name by local government. In order to avoid confusion and needless delays, please make a note of the new address, and "forget" his old address after July 1, 1970.

Wade also points out that he will use some of the summer time 'lull' to retire more of the older books, and thus will need replacements for the coming fall "season." In other words—and as you well know—the continued success of the MART is entirely dependent on the support of our members. Few books mean short and "lousy" service—plenty of books means excellent service to chapters and individual members. So, in your own interest, please use some of that summer time to mount your duplicates in MART books, and send them in to Wade as soon as possible. And don't forget the new address . . .

## Dr. William Stericker Memorial Trophy



Pictured above is the beautiful pewter hammered viking ship trophy which Chapter 8 (South Jersey) made available to the best Scandinavian entry at the recent SOJEX (Atlantic City, N. J.) As already announced, SCC Vice-President Victor E. Engstrom won the trophy for his "Norway, Postal Markings 1855-74."

\* S \* C \* C \*

## NOJEX 1970

Now Is A Good Time To Prepare For Participation

The annual NOJEX in Newark, New Jersey (Hotel Robert Treat) will be held November 13-15, 1970, and will be the host for a National SCC Meeting. There will also be a separate class for Scandinavia in the competition.

This is not the annual SCC convention meeting, but rather the second meeting of the year, as determined in the by-laws. We expect that the nearest chapter (No. 9, North Jersey) will arrange for the details in cooperation with the national SCC.

This should be a great opportunity for putting up a majestic display of Scandinavian exhibits, and NOJEX 1970 should draw hundreds of SCCers from up and down the East Coast, as well as many other parts of the continent.

Those of you who are interested in exhibiting, beginners or advanced, should contact NOJEX Entries Chairman **Bradley J. Arch**, 144 Hamilton Ave., Clifton, New Jersey 07011, who will send you the prospectus.

We understand that in addition to the SCC Trophy, there will also be other special awards available for Scandinavian entries. Announcement about these will be made as soon as available.

### Your 1970 SCC membership dues

of \$3.00 should be sent to SCC Treasurer

**Robert W. Lang, 23 The Horseshoe, Newark, Delaware 19711**

(Please make check or M. O. payable to Scandinavian Collectors Club)

## New Issues of Scandinavia

As you recall, the illustrated listings of Scandinavian new stamp issues was discontinued in 1967; the last such listing appeared in the July 1966 issue (Vol. 23, No. 3).

As explained at the time, it was felt that these listings took up too much space and besides, Scandinavian new issues are fully explained (and illustrated) in the philatelic press, as well as included in the annual catalogs, domestic and foreign. Our decision was generally much appreciated, and we have since continued to plan the contents of THE POSTHORN without the new issues column.

However, there are some members who would like to see the reintroduction of this feature. At last year's COMPEX, the SCC Board recommended that a "modified" listing should be established as soon as practicable, so that the new (Scandinavian) stamp issues be included in THE POSTHORN as a "matter of record." We do not share this opinion, but will not oppose the expressed desire of a part of the membership; and with the approval and recommendation of the Board, we are now prepared to resume the new issues listing, without illustrations.

The first "order of business" is to catch up on the issues which have been released since the last listing (July 1966), and we will do that in country order, starting now with DENMARK:

### 1966

- Aug. 31 — Georg Jensen's 100th birthday anniversary  
80 øre blue (regular and fluor. paper)
- Oct. 24 — Refugee Day Issue, with additional charge for the benefit of refugees. Only on fluor. paper.  
40+10 øre, brown (1,1 million)  
50+10 øre, red (1,3 million)  
80+10 øre, blue (987,000)
- Nov. 24 — Preservation of national treasures (only on regular paper)  
1.50 Kr. Dark olive

### 1967

- Jan. 9 — Academy of Music Issue, to commemorate the centenary of the Royal Danish Academy of Music. On regular and fluor. paper.  
50 øre, red (17.1 million)
- March 2 — EFTA Issue (European Free Trade Association). On regular and fluor. paper.  
80 øre, blue (7.4 million)
- April 6, May 11 — Copenhagen 800 years. On reg. and fluor. paper.  
25 øre, green (issued April 6)  
40 øre, brown (issued May 11)  
50 øre, red (issued May 11)  
80 øre, blue (issued May 11)
- June 10 — Princess Margarethe Wedding Issue. Only on reg. paper.  
50 øre, red
- June 30 — Regular issue in wavy-line design. Only on fluor. paper.  
30 øre, blue-green
- June 30 — Regular issue in Frederik IX design.  
50 øre, brown (both reg. and fluor. paper)  
60 øre, red (both reg. and fluor. paper)  
80 øre, green (only on fluor. paper)  
90 øre, blue (only on fluor. paper)

**Note:** From now on, all Danish stamps are printed on fluorescent paper.

- July 8 — Regular issue in small coat of arms design.  
     2.20 Kr. orange  
     2.80 Kr. gray
- Sept. 21 — Sonne Issue, to commemorate 150 years of the Danish cooperative movement, initiated by Hans Christian Sonne.  
     60 øre, red
- Oct. 12 — Salvation Army Issue, with charity surcharge.  
     60+10 øre, red
- Nov. 9 — Seamen's Church Issue, to mark the centenary of Danish Seamen's Church in foreign ports.  
     90 øre, blue

1968

- April 24 — Esbjerg Harbor 100 Years Issue.  
     30 øre, green
- April 29 — Regular issue in small coat of arms design.  
     2.90 Kr. violet

(To be continued)

\* S \* C \* C \*

## New Members

- 1434 **BRANDER, Erik** — 19th Century Scandinavia  
 4352 Via Esperanza, Santa Barbara, Calif. 93105
- 1435 **CRIPPS, Walter R., Jr.** — Mint Scandinavia  
 710 No. Pass Ave., Burbank, Calif. 91505
- 1436 **FERRY, Dexter M., Sr.** — General  
 Rt. 1, Lake Lorraine, Ellabell, Ga. 31308
- 1437 **FLACCUS, W. Kimball** — Scandinavia, France & Colonies  
 404 Haverford Place, Swarthmore, Penn. 19081
- 1438 **LILLEY, Charles H. W.** — Iceland, Greenland, Danish West Indies  
 372 Mangarei Roed, New Plymouth, New Zealand
- 1439 **OGG, Ronald Robert** — Scandinavia, US, Benelux  
 P. O. Box 93, Whippany, N. J. 07981
- 1440 **OSTERBERG, Donald H.** — Sweden  
 5 Eliot Road, Lexington, Mass. 02173
- 1441 **SAVAGE, Neil B.** — Sweden  
 R. R. #4, Box 72, Narragansett, R. I. 02882
- 1442 **BENZ, George R.** — Scandinavian Mint Sets  
 250 Seton Road, Cheektowaga, N. Y. 14225
- 1443 **BILDEN, William O.** — D.W.L., Norway Covers only  
 801 Hennepin Avenue, Minneapolis, Minn. 554043
- 1444 **BLUM, Henry** — Sweden, Switzerland, Austria  
 71 Prescott Street, Demarest, N. J. 07627
- 1445 **LEE, James N.** — Scandinavia  
 2218 Glen Court, Richmond, Ind. 47374

## "Closed Albums"

- 229 **Henry Kuhlmann**, 22 West Monroe Street, Chicago, Illinois
- 602 **Jack Billington**, 717 Trombley Road, Grosse Point Park, Michigan
- 692 **Nils Pontenstein**, 1621 Whittier Avenue, Springfield, Illinois
- 733 **Birgir M. Bendixen**, 131-74th Street, Brooklyn, New York
- 781 **James B. Shaner, Sr.**, 239 Penna Avenue, Kutztown, Pennsylvania
- 1089 **Mark G. Snow**, 2000 Lorain Road, Fairview Park, Ohio

## Scandinavian Stamp Mart

Want to buy the duplicates of other collectors? Want to sell your duplicates? Want to put your duplicates to good use—those you have been having around for years and never figured out what to do with?

Then the SCANDINAVIAN STAMP MART is for you!

The Mart Manager is Wade M. Beery, 7578 Alleghany Road, Manassas, Va. 22110.

You will find it worth your while getting in touch with him.

\* S \* C \* C \*

Support the S. C. C. by getting your friends to join

---



---

SCC

**CHAPTERS**

SCC

---



---

### Chapter 1—Seattle Washington

Meets every first Wednesday, Collectors Club, 7212 E. Green Lake Dr., N. Seattle Wash.

Secretary: Miss Harriet Hintze, 1312 University Street, Seattle, Wash. 98101

### Chapter 2—Philadelphia

Meets every third Monday, Kendrick Rec. Center, Ridge Avenue and Pensdale St., Philadelphia, Pa.

Secretary: Mrs Christine Blinn, P. O. Box 730, Woodbury, N. J. 08096

(Note: No meeting in July or August)

### Chapter 3—Detroit, Michigan

Meets every third or fourth Saturday, at homes of members on a rotation basis.

Secretary: Oscar E. Mittelstaedt, Jr., 4145 So. Fulton Pl., Royal Oak, Mich. 48072

### Chapter 4—Chicago, Illinois

Meets every fourth Thursday, Room 216 at LaSalle Hotel, Chicago, Illinois.

Secretary: Robert P. Stevens, 1625 West 104th Place, Chicago, Ill. 60643

(Note: No meeting in July or August)

### Chapter 5—Boston

Meets every second Wednesday at Cardinal Spellman Phil. Museum, Weston, Mass.

President: Arthur Anderson, P. O. Box 941, Framingham, Mass. 01701

### Chapter 7—New York

Meets every 2nd Wednesday, Danish Athletic Club, 750-65th St., Brooklyn, N. Y.

Secretary: Melvin I. Goldfarb, 200 Pinehurst Ave., New York, N. Y. 10033

(Note: Only informal get-together in July and August)

## Chapter 8—South Jersey

Meets every third Tuesday, 405 North 8th Street, Vineland, N. J.

Secretary: **Mrs. Helen Rocco**, 405 North 8th Street, Vineland, N. J. 08360

## Chapter 9—North Jersey

Meets every third Thursday, Commonwealth Club, 551 Valley Rd., Upper Montclair, N. J.

Secretary: **George G. Birdsall**, 82 Hawthorne Ave., Bloomfield, N. J. 07003

## Chapter 10—Toronto, Canada

Meets every second Wednesday, 1224 Broadview Avenue, Toronto, Canada

Secretary: **William A. Daubert**, P. O. Box 43, Station H, Toronto 13, Ont., Canada

## Chapter 11—Iceland

Meets every first Monday, Cafeteria Main Post Office Building, Reykjavik.

Secretary: **Bjorn Gunnarsson**, Fjölhisveg 13, Reykjavik.

## Chapter 12—Washington, D. C.

Meets every fourth Tuesday, Museum of History & Technology, Smithsonian Institution, Constitution Avenue, Washington, D. C.

Secretary: **Wade H. Beery**, 115 Amelia Drive, Manassas, Virginia 22110

## Chapter 13—Delaware

Meets every last Tuesday, at homes of members on a rotation basis.

Secretary: **John R. Day**, 8 Stones Throw Rd., Wilmington, Del. 29803

## Chapter 14—Twin City

Meets every second Wednesday, Northeast State Bank, Marshall St., N. E., Minneapolis, Minn.

Secretary: **Robert Frigstad**, 2181 Lakeaires Blvd., White Bear Lake, Minn. 55110.

## Chapter 15—Rochester, New York

Meets every fourth Tuesday at 249 Courtly Circle, Rochester, N. Y.

Secretary: **Mrs. B. Wennermark**, 249 Courtly Circle, Rochester, N. Y. 14615

## Chapter 16—South Mississippi

Meets every first Saturday at 8 p.m. at Hancock Bank, Teagarden Rd., Mississippi City, Miss.

President: **Richard J. Beck**, 2106 Wilkes Ave., Biloxi, Miss. 39530.

## Chapter 17—Southern California

Meets every first Wednesday at Los Angeles Philatelic Club, 417 S. Alvarado St., Los Angeles, Calif.

Secretary: **William Offner**, 1122 South Tremaine Ave., Los Angeles, Calif. 90019

## Chapter 18—Memphis, Tenn.

Meets on call of Temp. President Joe F. Frye

SWEDEN'S

1970

*Facit***The Specialized Catalog of Scandinavian Stamps**

Seasonal "clearance sale" — only \$3.00 postpaid

Beginner or advanced—you need FACIT!

**Scandinavian Philatelic Literature Service**

Box 175, Ben Franklin Sta., Washington, D. C. 20044

"SCANDINAVIA SPECIALIZED" international mail auctions of MIDLAND STAMP CO. (ASDA-PTS-APS-SCC) of Box 11,425, Memphis TN 38111 USA have capacity for a few new friends due to the periodic removal of inactive names from our list. MOST MAJOR DEALERS AND SPECIALISTS ARE ON OUR MAILING LIST—ARE YOU? Free catalog (or our new "NEWSLETTER," getting started June 1970) for the asking. Overseas please include 60c mint stamps your country for AIRMAIL!



For classic Finnish stamps (before 1900) of particularly superb quality we pay top prices, especially on covers and pieces.

We also pay very well for similar material from other Nordic countries.

Regular Scandinavian (especially Swedish) stamps are bought at normal wholesale prices according to special buying list.

We also give official expertise on Finnish rare stamps.

**ROLF GUMMESSON A/B**

Kungsgatan 55, 111 22 Stockholm, Sweden