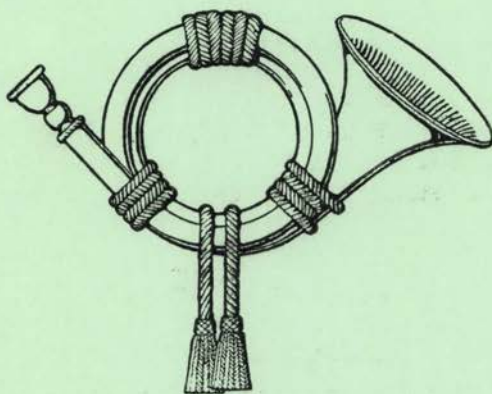


Vol. 33, No. 3, Whole No. 127, August 1976

The
POSTHORN
TM

"The Bank of Scandinavian Philatelic Knowledge"



OFFICIAL PUBLICATION OF THE SCANDINAVIAN COLLECTORS CLUB

THE POSTHORN

Official Publication of the
SCANDINAVIAN COLLECTORS CLUB

Published Quarterly

Annual membership dues in the Scandinavian Collectors Club are \$5.00,
of which \$3.50 is for a subscription to The Posthorn.
Subscription to The Posthorn is \$7.50 a year to non-members, or \$2.00 a copy.
Orders should be addressed to the Secretary.

Vol. 33, No. 3, Whole No. 127, August 1976

Office of Publication: 821 Vermont Street, Lawrence, Kansas 66044

Second Class postage paid at Lawrence, Kansas

Postmaster: Send form 3579 to 821 Vermont St., Lawrence, Kans. 66044

Editor: Robert A. Helm, 349 Sound Beach Ave., Old Greenwich, CT 06870
to whom all material and communications concerning The Posthorn,
except advertising, should be sent.

Associate Editors: Carl H. Werenskiold, Harlan W. Miller (Layout),
Helen A. Helm (Copy and Galley)

Photographic Consultant: Larry McBrearty, 296 Park Ave., Yonkers, N. Y.

Business Manager: Don Halpern, 709 Forest Ave., Westfield, NJ 07090

OFFICERS

President—Robert Frigstad, 2131 Lakeaires Blvd., White Bear, MN 55110

Vice President — Donald Halpern, 709 Forest Avenue, Westfield, NJ 07090

Secretary — Fred Bloedow, 5065 North Wolcott Street, Chicago, IL 60640

Treasurer — William Pieper, 22 Rice Creek Way, Minneapolis, MN 55432

TABLE OF CONTENTS

SCC At Interphil	First page
Call For Nominations	66
Norwegian Private Perfins—Hanson	67
Swedish Post Office Authenticity Committee Report	72
Stimpelmerki—Sickels	74
Greenland 1 Øre Parcel Post Stamp	77
Letters	80
Chapter News	84

Copyright 1976 S. C. C.

SCC At Interphil

From all reports, INTERPHIL 76 was a resounding success. The dealers were happy. The visitors were happy. The exhibitors were happy (!) The many foreign postal services were happy. The USPS was very happy. Only those who got stuck in the long lines were a bit miffed.

For SCC, the show and convention were also successful. We had an unexpectedly large turnout for the dinner at Cobblestones Restaurant Sunday evening. The restaurant staff was quick to accommodate a crowd which grew from an initial 25 reservations to a grand total of 46. In fact, with a bit more advance notice, we would surely have had an even larger crowd. For example, we missed the Svend Yorts who had already committed themselves to an INTERPHIL event that evening.

During the Dinner and convention meeting, as well as the slide programs we were especially happy to see a few special people such as Mr. Harlan W. Miller, our POSTHORN publisher, and his good wife; Honorary Member Dr. Georg Menzinsky from Sweden, who also served on the INTERPHIL jury; a good many SCC officers including Bob Frigstad, Don Halpern, Fred Bloedow, Bob Helm, and Vic Engstrom; and a number of INTERPHIL exhibitors and SCC members including Christine Blinn, Vic Engstrom, Tomas Bjäringer of Belgium, Björn-Eric Saarinen of Finland, F. C. Moldenhauer, Jr. of Norway, Roger Swanson, Herb Bernstein, Bob Brandeberry, Dr. Arno Debo of Germany, and dealers Russ Mascieri and Gerry Strauss, among others.

When it came to the Awards Banquet on Saturday evening, quite a number of SCC'ers figured prominently with their prize-winning collections:

Prix d'Honneur, F. I. P. Class of Honor

Col. James T. DeVoss — Via Panama

Dr. James J. Matejka, Jr. — Newfoundland Aerophilately

Large Gold With Felicitations

Tomas Bjäringer — Sweden, 1855-1872

Gold

Col. Victor E. Engstrom — Danish West Indies

Vermeil

George T. Turner — U. S. 19th Century Postal History

Christine Blinn — Danish West Indies

Roger A. Swanson — Iceland, The Aurar Issue 1876-1901

F. C. Moldenhauer, Jr. — Norway

Bernard D. Harmer — Colombia Airpost

Large Silver

Theo Van Dam — U. S. World War I

Ellery Denison — Foreign Post Offices in China

Herbert Bernstein — Faroe Islands

Bronze

Björn-Eric Saarinen — The Old Finnish Issues 1856-75

Literature — Large Silver

George T. Turner — "Essays and Proofs of U. S. Internal Revenue
(also Special Award of the Stamps)"

Great Britain and International Philatelic Society of Basel)

Robert G. Stone — "France and Colonies Philatelist"

As you can see, SCC can be proud of the excellent showing its members made at INTERPHIL '76.

CALL FOR NOMINATIONS

This is election year for SCC; the following officers are to be elected to a two year term: President, Vice President, Secretary, Treasurer, Editor, and three (3) Directors-at-large.

President Robert A. Frigstad has appointed a nominating committee consisting of John Siverts, Ray Leth, and Ernst Cohn. Members or Chapters may also present nominations for any or all officers as specified in Article VI, Sections 6 and 7 of the SCC By-Laws.

The SCC Board of Directors held a lengthy meeting prior to the Convention meeting. Not surprising is an increase in dues to \$6.00. This was inevitable in light of rapidly rising costs at every turn. A regional SCC meeting will be held at NOJEX, so mark your calendar to be in Cranford, NJ at the Coachman Inn November 12-14. Next convention meeting will probably be at NAPEX in Washington, DC in 1977.

Stanley H. Hanson of Chicago has agreed to take over the SCC Library. Hopefully, a complete listing will be compiled and published in the POSTHORN (or as a supplement), so members can take advantage of this research source. Vic Engstrom reports that the DWI handbook is nearing completion, with several chapters already in galley form. Wayne Sommer advised that SCC will probably cooperate with Sweden's Islandssamlarna to bring out a 2-volume handbook of Icelandic postal markings, with SCC providing the bulk of Volume 2.

Steps are being taken to reprint more volumes of the POSTHORN so that members can have access to this valuable source of information. John Siverts has been appointed Chairman of the Nominating Committee. He needs your interest and support, should he contact you to serve SCC in some capacity over the next two years.

We were greatly indebted to Wilmington, DE Chapter 13 for providing four excellent slide programs shown at INTERPHIL, and sponsored by SCC. The first program was on Faroe Islands and was presented to a capacity audience by Russ Mascieri. The second program was given at the beginning of our Convention Meeting on Monday. It was an informative and humorous program on the Vikings and their history as depicted on stamps, and very ably presented by "Whitey" Bro. Tuesday's program was on Danish Cancellations, as given by Al Gruber; and the final presentation on Wednesday was on DWI by Willis Moore. We are grateful to the members of Chapter 13 whose collections made these programs possible, to those who took time out of their busy schedules to present the programs and answer questions afterwards, and especially to Bob Lipscomb of Chapter 13 whose excellent photography made the slides so vivid.

Brad Arch was appointed Chairman of the Conventions and Shows Committee, and he will be seeing to it that literature on SCC is furnished to members who will be holding regional meetings at area shows.

One other area in which SCC provided a major contribution to INTERPHIL was in members who served on the International Jury: Herbert J. Bloch, Arno Debo, Bernard A. Hennig, Georg Menzinsky, Mary Ann Owens, Svend Yort. Other SCC'ers worked hard for INTERPHIL in the capacity of officers, committee members, regional representatives, donors, etc. SCC can certainly be proud of the various roles it played to make INTERPHIL a success.

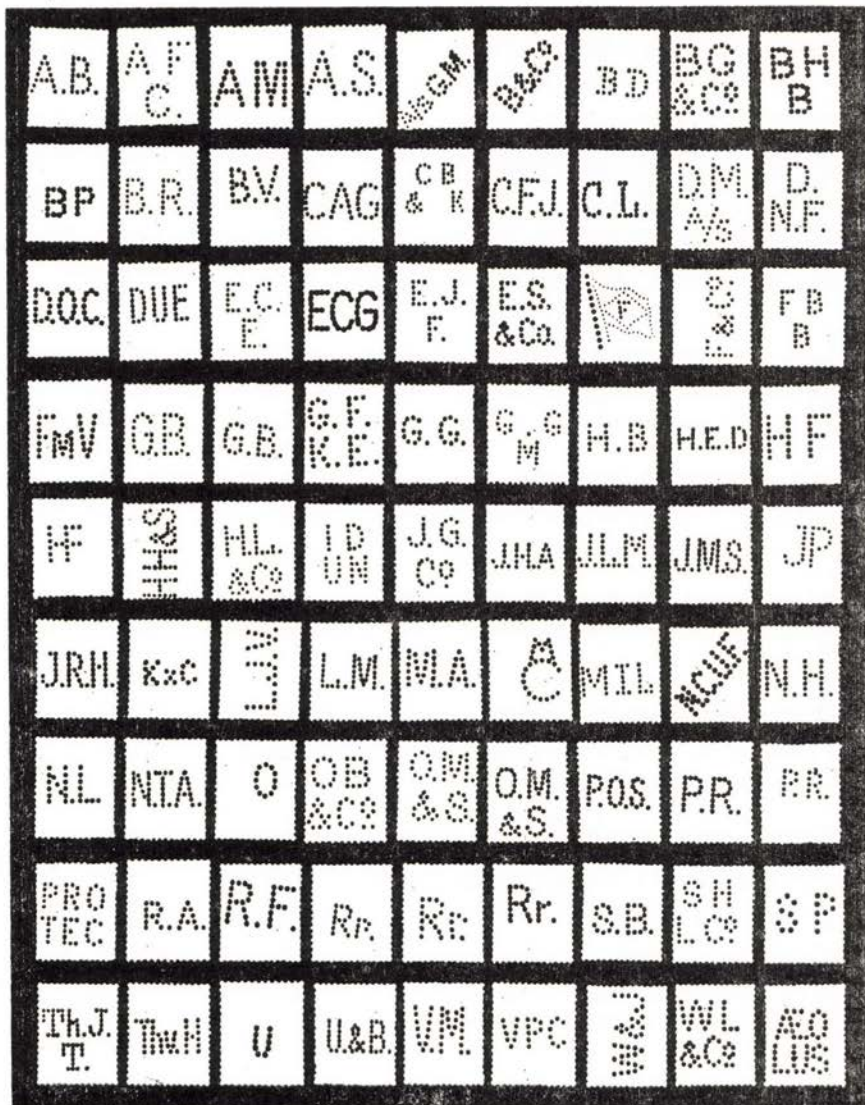
—Alan Warren

Norwegian Private Perfins

By Stanley H. Hanson, SCC #974

Looking for a new field in Norwegian Philately? Here is a challenge to be explored, Perfins. Perfins you say! We threw away those punched stamps because they did not fit in the collection and we considered them as damaged material and of having no use or value.

How wrong we were. Look through the various Club Circuit Books and dealer's stock. Not much luck, but now and then you may pick up a Perfin. Why the scarcity? Perhaps some background information would be of help. Many commercial and industrial establishments, large and small used Perfins



as a deterrent to prevent employees and others from using the company's stamps for personal or other usage. With the advent of Metered Mail the use of Perfins was gradually phased out by the larger firms. At this time there may be usage by the smaller firms.

This is a literal translation¹ of Paragraph XIV of "Circular from the Royal Norwegian Government's Navy and Post Department." To all postmasters and post dispatchers, dated August 24, 1882, state that: "The Department has upon inquiry agreed that correspondents, for recognition of the stamps bought for their business and used there, may affix their firm marks with the aid of perforation stampers. It is, however, expressly emphasized that stamps by this means are not to be made unclear or the reading of the postmarks used to cancel the stamps is not made difficult."

Initial	Name	City	Circa
A.B.	A. Bergene	Kristiania	1900—1927
A F	? A. F. Carlsen	Kristiania	1891—1906
C.			
A M	Arthur Mack	Tromsø	1903—1964
A.S.	?	Kristiania/Oslo	1914—1941
A/S G.M.	A/S Gerdt Meyer	Bergen	1910—1918
B & Co	Behrens & Co	Bergen	? 1924
B D	Brødrene Dahl A/S	Kristiania/Oslo	1920—1942
B G	Bredjer Gundersen & Co	Bergen	1927—1963
& Co			
BH	?	?	1917
B			
B P	?	? Kristiania	ca. 1910—1920
B.R.	Bennetts Reisebureau	Kristiania/Oslo	1914—1926
B.V.	?	Kristiania	1914—1924
CAG	C. A. Gundersen A/S	Bergen	1924—1949
CB	Christiania Bank og Kreditkasse	Kristiania	1888—1910
& K			
C.F.J.	Carl F. Johannessen	Kristiania	1914—1919
C.L.	Conrad Langgaard	Kristiania	1910—1915
D.M.	Ditlef Martens A/S	Bergen	1931—1940
A/S			
D.	?	Kristiania	1914—1927
N.F.			
D.O.C.	Det Oversøiske Co. A/S	Kristiania	1900—1917
DUE	E. C. Due & Co A/S	Kristiania/Oslo	1900—1951
E.C.	?	? Kristiania	1916
E.			
ECG	? E. C. Gjesvang	Kristiania	1895
E.J.	Emil Jørgensen, Frihavnen	Kjøbenhavn	1921—1928
F			
E.S.	?	Kristiania	1911—1914
& Co.			
F(In flag)	Augusto de Freitas	Hamburg	1903
F & Co	? Fleischer & Co	Bergen	1897—1903
FB	F. Beyers Forlag A/S	Bergen	1918—1947
B	—>— Papirvarefabrik A/S		
FmV	Fredrikstad mek Verksted	Fredrikstad	1918—1941
G. B.	Gunnar Bradley	Bergen/Oslo	1915—1928
G. B.	—>—	—>—	1915—1931
(Many types)			
G. F.	? Gideons Filial K. Eriksen	Tromsø	1909—1922
K. E.	(K. Eriksens mek. Værksted)		
G. G.	Grimstad Gartneri	Grimstad	1920—1922
G.G	Gulb, and Gilbert Maarud	Kristiania	1882
M			

Initial	Name	City	Circle
H. B.	Hans Bergsland	Kristiania	1900—1915
H.E.D.	H.E. Dahr	Kristiania	1899
H F	?	Kristiania	1909—1914
HF	?	Kristiania	1922
HH&S	H. Heitmann & Son A/S	Kristiania	1901—1919
H.L. & Co	Harald Lyche & Co	Drammen	1925—1974
ID	Idun	Kristiania	1883—1888
UN			
J. G. Co	Joachim Grieg & Co.	Bergen	1923—1940
J.H.A	Joh. H. Andresen	Kristiania	1886—1911
J.L.M.	Johan Ludvig Mowinckel	Bergen	1928—1939
J.M.S.	J.M. Stenersen & Co.'s Forlag	Kristiania	1906—1913
JP	?	Bergen	1914—1928
J.R.H.	? Joh. Rye Holmboe	Tromsø	1912—1933
K&C	?	Kristiania	1883
L.J.V.	Lorentz Juell Vogt	Kristiania	1911—1919
L.M.	Løwener, Mohn A/S.	Kristiania/Oslo	1913—1936
M.A.	Moss Aktiemøller	Moss	1910—1932
M	Margarincentralen	Bergen	1938—1940
C			
M I L	Norsk Brændselolje A/S	Kristiania	1924—1926
N.C.U.F.	Nils Chr. Uglund Falster	Kristiania	ca. 1915
N.H.	Niels Holwech	Kristiania	1915
N.L	?	Kristiania	1914
N.T.A.	? Nordisk Tekstil Aktieselskab	Kristiania	1923
O	?	Oslo	1932
OB & Co	? Oluf Bjørneseth & Co	Bergen	1912—1950
O.M (5 hole & S. in M)	O. Mustad & Son	Bergen	1929—1935
O.M (6 hole & S. in M)	—>—	Kristiania/Oslo/ Gjøvik	1900—1938
P.O.S.	?	Kristiania	1903—1918
P.R.	? Paul Rieber	Bergen	1895—1900
P.R.	? —>—	Kristiania	1888—1906
(Many types)			
PRO	? Protect Gummiconfections	Kristiania	ca. 1924
TEC	Fabriker		
R.A.	Rich. Andvord A/S	Kristiania/Oslo	1922—1928
R.F.	Riebers Filial	Trondhjem	1923—1938
Rp.	Rieber & Co. A/S	Kristiania/Oslo	1921—1957
Rr.	Rieber & Co. A/S	Stavanger	1930—1938
Rr.	G. C. Rieber & Co. A/S	Bergen	1895—1940
S.B.	Storm, Bull & Co	Kristiania/Oslo	1909—1929
SH	S. H. Lundh & Co	Kristiania	1882—1904
LCo			
SP	Stavanger Privatbank	Stavanger	1903—1927
Th.J.	Theod. Jebens	Tromsø	1901—1914
T.			
Thv.H	Thv. Halvorsen	Bergen	1914—1938
U	?	? Bergen	1942
U. & B.	? Ullman & Bronn	Kristiania	1907—1920
V.M.	Væksdal Mølle	Bergen	1922—1951
VPC	Vestlandske Petroleum Co	Bergen	1914—1919
W&J	Wittusen & Jensen	Kristiania/Oslo	1915—1935
WL & Co	Westfal-Larsen & Co A/S	Bergen	1927—1964
ÆO	Forsikringselskapet Æolus A/S	Bergen	1922—1932
LUS			

The preceding is a listing of Norwegian Private Perfins.² As noted in the text the listing is not complete and firm names are missing or appears with question mark(?), year dates are missing or may be wrong. Only through your co-operation can this listing be updated. We will be more than happy to see the information is transmitted to the catalog committee.

- (1) Translation by F. A. Brofos, H11.
- (2) Norgeskatalogen 1973, 74, 75, 76.

* S * C * C *

APS Annual Convention In Memphis Sept. 9-12

The Fiftieth anniversary of the Memphis Stamp Collectors Society, Inc., will be celebrated by special cachet souvenir covers specially designed for sale at the 1976 A.P.S. Annual Convention, to be held at the new Hyatt-Regency hotel in Memphis, Tenn. on Sept. 9-12, 1976.

One of the officers of the host society is a steel die engraver by profession and is preparing a beautiful "artist's essay" of the Tennessee Flag stamp of the USA, recently the subject of some controversy due to alleged incorrect rendition on the issued stamp. This "essay" will appear as the "APS-MEMPHEX '76" souvenir card, available only as an integral part of the show program. Those not attending the show may write for prices and details of mail orders for the program and other show souvenirs to: MempheX Souvenirs, P. O. Box 22308, Memphis, TN 38122.

Other features of the event include: National Philatelic Literature Competition; A.P.S. "Champion-of-Champions" philatelic competition; a 25-dealer bourse; Segal of New York major auction sale; special Ladies' tour of Memphis; U. S. Postal Service participation with (hopefully) First Day of Issue of a new stamp and many other activities to tempt the visitors.

If you do plan to attend, see the center spread in the "American Philatelist" for July, 1976 or write: "MempheX Guest," Box 22308, Memphis, TN 38122, enclosing a 13c stamp (o.g., please!) and full details will be forwarded immediately.

* S * C * C *

News From the Librarian

Stanley H. Hanson, SCC 974

As your newly appointed SCC Librarian, we will make the necessary plans to improve the library service to all SCC members. A complete listing of all material in the SCC Library. This new listing will be published in The POSTHORN as a supplement. New Scandinavian reference books will be purchased when published and will be so noted in The POSTHORN. Exchange publications with The POSTHORN will be bound yearly and will be available to the membership. Photocopying will be available for reference material that is not mailable. A complete reference service of all material will be available to the membership and if the Librarian cannot find or locate the particular reference he will send the request to a member specialist for corroboration and the correct answer.

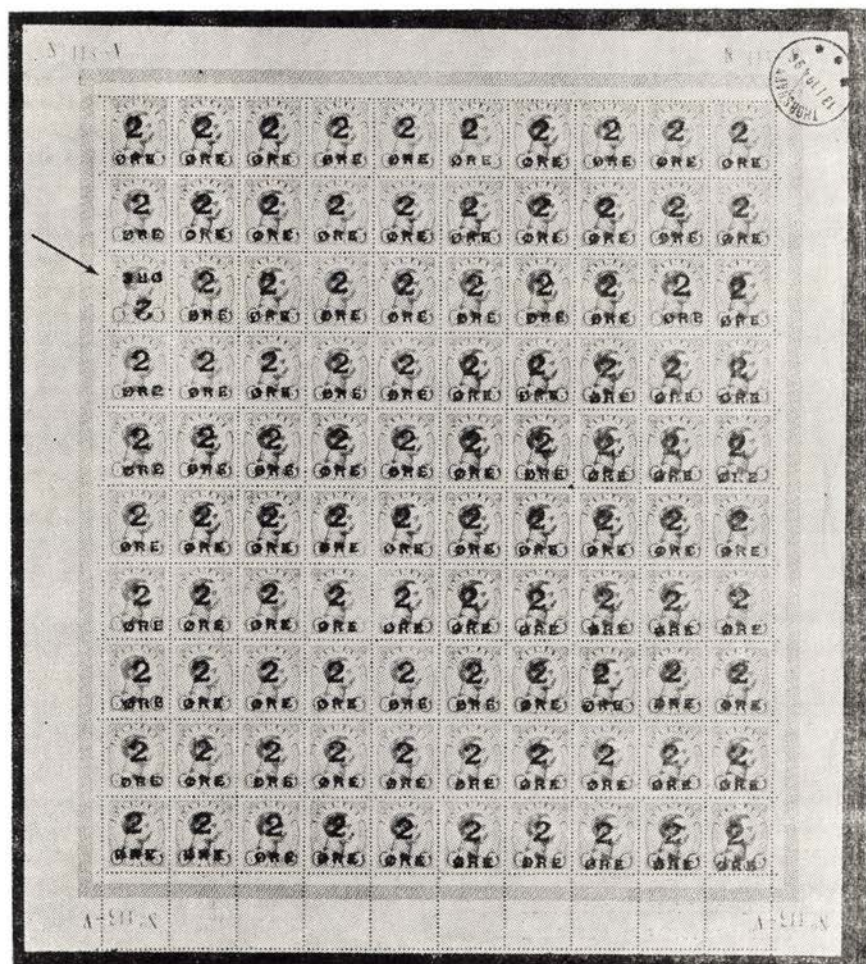
It is our hope to have the above services available to the members as soon as possible. SCC is a service organization and we want to serve you to the best of our ability.

Sells A Faroe Island Rarity

A new record price for the Danish philatelic area has been set with the Danam Stamp Company announcement that the firm recently negotiated the sale of the only known sheet of the Faroe Islands 2 øre provisional. Besides the uniqueness of the sheet, position 21 has the Inverted surcharge, which is the only known example. Selling price was \$70,000.

The 2 øre provisional, listed in Scott as Denmark #155, became necessary early in January 1919, because the Danish letter rate, which prevailed in the Faroes also, had been raised from 5 to 7 øre effective January 1, 1919. The new 7 øre stamps were not ready until December 28, 1919 and the next boat from Denmark to the Faroes (828 miles away) would not arrive until January 23, 1919.

Soon after January 1, 1919 the small number of 2 øre stamps at the Thorshavn post office, which were used with 5 øre for the new additional franking, were soon exhausted. Initially the postal authorities tried to im-



provised by bisecting the remaining 4 øre stamps but these were quickly gone. Not even the trick of utilizing printed matter wrappers with the 4 øre value imprinted and bisecting this "cut square" helped for more than a few days. Upon telegraphic authorization from Copenhagen 155 sheets of the 5 øre stamp were surcharged 2 øre. This surcharging was done by hand at the Thorshavn post office on January 12, 1919 and this measure enabled the postal authorities to survive this postal crisis until the Danish mail boat S. S. Bothnia arrived on January 23, 1919 with 1000 sheets of the new 7 øre stamps.

This sheet, which was owned by an American was sold by Russell Mascieri the president of the Danam Stamp Company on one of his recent trips to Denmark. Although known for their public auctions, the Danam Stamp Company also is very active in privately placing individual rarities and large specialized collections. Currently the firm advises that it has in stock the only known copy of Iceland #31a unused, which is the rarest mint stamp of Iceland.

* S * C * C *

The Swedish Post Office Authenticity Committee

There is nothing to indicate so far that the Post Office Museum collections of Skilling banco stamps are forgeries except those registered as such. This was the majority opinion of the authenticity committee appointed last year by Director General Ove Rainer to examine the Museum's collections of classical stamps.

The reason for mounting the investigation was that allegations had been made to the effect that the Museum's collections of skilling banco and other stamps consisted in part of forgeries.

Members of the authenticity committee were: Mr. Arne Henrikson, Chairman; Mr. Per Bjurström, Senior Custodian; Professor Diego Carlström; Mr. Lars Erik Ewert, Printing Superintendent; Mr. Ernst Fromén, Civil Engineer; Mr. Curt Halj, Civil Engineer; Mr. Anders Litzén, Appellate Court Division President; Mr. Friedrich Schaffer, Engineer; Professor Börje Steenberg; Mr. Karl-Erik Stenberg, Sales Manager; and Mr. Gilbert Svenson, Senior Custodian. Mr. Alf Lindeberg, former Head of Department, was appointed Secretary.

From the outset the committee limited its examination to skilling banco stamps with a coat-of-arms motif, particularly 3 skilling banco stamps, and concentrated mainly on the following main lines of investigation: certain historical aspects, paper, dimensions, printing, printing materials and cancellation mark.

Suspicious of the occurrence of forged stamps had been voiced by the Curator of the Museum, Mr. Gilbert Svenson, and three other philatelic experts on the committee, Mr. Ernst Fromén, Mr. Friedrich Schaffer and Mr. Karl-Erik Stenberg. This group of critics alleges that in conjunction with the 1885 reprinting of skilling banco stamps at least two surplus issues were printed.

The working group consisting of Mr. Anders Litzén and Mr. Gilbert Svenson, who studied extensive historical source material, states in a summary of their work:

Certain circumstances have existed for presupposing the occurrence of a surplus issue but no evidence that any such was actually printed has been found in the historical material.

In order to perform the investigation under practical conditions, Mr. Fromén, Mr. Schaffer and Mr. K-E Stenberg were permitted to pick out the sus-

pected stamps and explain why they considered them to be forgeries.

One of the reasons was that two of the stamps contained hemp. According to Mr. Schaffer, the use of hemp in the manufacture of stamp paper in Sweden was not begun until nine years after the first edition of the skilling banco stamps had been printed. However, the authenticity committee established that the cash-book of Tumba paper mill showed several purchases of hemp at the time of the introduction of the skilling banco stamps.

Mr. Schaffer also considered that the paper in one of the 3 skilling banco stamps was manufactured by machine instead of by hand. Scientific examination by paper experts in Germany shows that it is not possible to determine the method of manufacture with any certainty at a later date. Tests conducted on behalf of the committee confirm the correctness of this and consequently the method of manufacture cannot be used as evidence to prove that a stamp is a forgery.

The occurrence of certain foreign particles in the stamp paper, which the critics found to be suspicious, has been examined by the paper expert, Professor Börje Steenberg. He considers there to be a natural explanation for this and it cannot therefore be considered to constitute evidence.

After examining the changes occurring in the stamp paper after soaking, pressing and drying, Professor Diego Carlström finds these changes to be highly extensive. He therefore considers that the absence of visible depressions from printing or cancellation cannot be taken as evidence that methods of falsification have been used. He has also carried out measurements on some hundred or so skilling banco stamps and points out that the dimensions of the stamps indicated by the group of critics as forgeries or of dubious authenticity are all within normal limits for genuine skilling banco stamps. At all events, there is no evidence of forgery.

In the case of the stamps alleged by Mr. K-E Stenberg to have falsified cancellation marks, a majority of the investigating committee considers, after examination by Professor Carlström and Mr. Haij, these stamps to be genuine.

Skilling banco stamps were printed by the letterpress process. Of the Museum's stamps numbered 1-30, Mr. Schaffer and Mr. K-E Stenberg approved only one as being authentic. They considered most of the others to be printed by a process different to ordinary letterpress. However, the printing experts, Mr. Bjurström and Mr. Ewert, found this not to be the case. In their opinion, all the stamps had been produced by the letterpress process.

A separate statement by committee member Mr. Anders Litzén and dissenting opinions by committee members Mr. Ernst Fromén, Mr. Friedrich Schaffer, Mr. Karl-Erik Stenberg and Mr. Gilbert Svenson have been presented.

PHILATELIC LITERATURE SERVICE

Our second saleslist contains already more than 100 titles of publications on Scandinavian Philately. A copy will be sent after receipt of one International Reply Coupon, the value of which will be settled with the first order.

We can also look after your subscription(s) to philatelic magazines in Scandinavia.

Scandinavian International Philately

P. O. Box 8042 — Rotterdam — Holland

Stimpilmerki: Some Statistics

By George W. Sickels #1545

This material upgrades the frequency distribution table which accompanied the article about these stamps in the November 1973 Issue of the Posthorn. It also tries to show relationships between values resulting from frequencies observed.

I. Table of Values (with frequency of copies tallied).

A. Type I. (1838 copies)		B. Type II. (313 copies)	
5 aur	53	1 Kr	131
10 aur	107	2 Kr	43
20 aur	47	5 Kr	22
25 aur	70	10 Kr	85
40 aur	187	50 Kr	25
50 aur	101	100 Kr	6
60 aur	25	500 Kr (?)	0
1 Kr	186	1000 Kr	1
2 Kr	334		
2.5 Kr	26		
5 Kr	159		
10 Kr	329		
50 Kr	76		
100 Kr	116		
500 Kr	12		
1000 Kr	10		

Notes:

1. Data based upon 1118 copies held in the U.S. and 720 copies held in Europe.
2. This frequency is not broken down by perforation because I was unable to perf the European holding.
3. No color distinction made for the 60 aur, 500 Kr, or the 1000 Kr because of the small number of copies seen.

II. Tables of Values. (Ranked in order of highest percentage of values tallied)

A. Type I.		B. Type II.	
	%		%
2 Kr	18.2	1 Kr	40.6
10 Kr	17.9	10 Kr	27.6
40 aur	10.2	2 Kr	13.7
1 Kr	10.1	50 Kr	8.0
5 Kr	8.7	5 Kr	7.0
100 Kr	6.3	100 Kr	2.0
50 aur	5.5	1000 Kr	0.3
10 aur	5.8	500 Kr (?)	0.0
50 Kr	4.1		
25 aur	3.8		
5 aur	2.9		98.8
20 aur	2.6		
2.5 Kr	1.4		
60 aur	1.4		
500 Kr	0.7		
1000 Kr	0.5		

100.1

Notes:

1. Four values comprise 56% of all copies seen for Type I.
2. Two values comprise 68% of all copies seen for Type II.
3. Aurar values of Type I are relatively scarcer than Kronur values under 500 Kr with notable exceptions: 40 aur is very common; 50 Kr is relatively uncommon; 2.5 Kr is quite uncommon.
4. Type II values: 1 Kr and 10 Kr are quite common; 100 Kr is relatively uncommon; 1000 Kr has just been uncovered, too early to judge.

III. Table of Values of Type I (grouped according to a frequency range).

Over 300	2 Kr, 10 Kr
150-299	40 aur, 1 Kr, 5 Kr
100-159	50 aur, 10 aur, 100 Kr
75-99	50 Kr
50-74	25 aur, 5 aur
30-49	20 aur
Below 30	2.5 Kr, 60 aur, 500 Kr, 1000 Kr

Notes:

1. 50 Kr is relatively close to 25 aur, 5 aur, Group.
2. 20 aur is relatively close to 25 aur, 5 aur, Group.

* S * C * C *

Vacation Stamps (Orlofsmerki) Discontinued

By George W. Sickels #1545

For the Icelandic collector whose interests lean to the Cinderella or "back-of-the-book" material, this article may be of interest. Each year the Icelandic Ministry of Post and Telegraphs publishes an annual yearbook (ARSSKYRSLA) containing a narrative summary and a statistical summary of the year's activity of the ministry. In the Annual of 1973 on page 33, paragraph 3.4 about Orlof and Sparimerki (Savings Stamps), an announcement was made about a change in the method of vacation pay eliminating the use of Orlofsmerki.

A translation of the pertinent information reads as follows:

"On 1 May 1973, a new vacation system was placed into use, and at that time vacation stamps were eliminated. The employers now make payment of vacation money directly to the postal station in conformity with the account necessary for a credit balance. You can attribute the great increase of vacation money deposited, 166.0%, for the most part to this new regulation, but partly to the salary increases of the public labor market.

"The root of the 41% increase in the sale of savings stamps (Sparimerki) also can be traced to salary increases of the public."

Thus, after thirty years of continuous use in Iceland, the story of Vacation Stamps has ended. No more will be issued, and of course examples will be more difficult to come by as the years go by.

* S * C * C *

All Issues of The Posthorn Now Available

By action of the SCC Board of Directors, those issues of The POSTHORN which were out of print or in very low supply will be reprinted. The reprinting will be done using a Kodak copying system, which should give excellent copy quality.

These issues of The POSTHORN are available from the Secretary at \$1.00 per issue. Note that the terms of the literature sale still apply.

The Hafnia 76 Exhibition Block



HOLGER PHILIPSEN del.

CZESLAW SLANIA sc.

Otto Bache: Et Koppel Heste udenfor en Kro

INTERNATIONAL FRIMERKEUDSTILLING KØBENHAVN 20.-29. AUGUST 1976



The exhibition block in connection with the international stamp exhibition HAFNIA 76 was issued on the 17th June 1976 and will be sold until the last day of the exhibition, the 29th August 1976. The remainders will be destroyed.

Theme: Famous Danish painter Otto Bache's "A String of Horses outside an Inn" (from 1878). Technique: Multicolored steel engraving in new printing procedure. Composer: architect Holger Philipsen. Engraver: Czeslaw Slania. Printers: Royal Danish P&T Printing House.

The miniature sheet measures 80x102 mm, the stamp itself measures 40.4 x 23.6 mm.

The miniature sheet shows the painting "in toto," the stamp text: 130 DANMARK centered around the postillion, which is the theme of the stamp itself. The text here and below the painting has painstakingly been selected from contemporary text types as the most adequate for this purpose.

While the single stamp is sold from all Danish post offices at face value, the miniature sheet is only sold together with a ticket for the HAFNIA 76 exhibition, price 15.00 Danish Kroner.

Otto Bache made two paintings ahead of the final one: one showing horses in a more loose composition, with no trees and less people. And before that a study, also in oil, with Otto Bache in front of the inn sitting with brushes, his easel, and other paraphernalia, while an ostler parades a white horse for the artist to study colors, shades and movements.

The miniature sheet, the price of which is 15.00 Danish Kroner, including an admission ticket for the HAFNIA 76, may be ordered from Postens Filateli, 59 Raadhustpladsen, DK-1550 Copenhagen V, Danish Postal Cheque Account: 3 02 14 83, or by International Money Order.

Greenland 1 Ore Parcel Post Stamp

Greenland parcel post stamps were just issued 15-20 years ago, nearly overlooked by the "proper" philatelist. Mostly they were not regarded as worthy to be placed in a collection, although their postal purpose actually are fully equal with Danish postal ferry stamps. The postal purpose was to cover the payment for mailing one parcel (minimum one pound in weight) between the KGH (Danish for Royal Greenland Trading Co. in Copenhagen) and the colonies in Greenland, or the opposite direction in the year 1905-1938/39.

Philatelic recognition did first start in the late 1950s, when Karlo Linskog worked systematically with the stamps. The result was several publications mostly based on KGH statistics issued during the 2nd World War. In this period KGH was separated from the Greenland workfield. New studies of the figures mentioned in this, number of stamps sold especially, point out the possibility of these statistics being incorrect.

Here we are going to inspect only one value, the parcel post stamp with the face value of 1 øre. Postally this value served its purpose from 1905 to the sharp rise in fee in 1930, but was still sold for face value until the KGH stock was exhausted in 1934. In KGH statistics the total sale of this value is stated as 66,525 copies, all printed by H. H. Thiele in Copenhagen. The delivery from printing was done in the following quantities for the stated years:

IMPORTANT: Catalogue mentions printed numbers and years are mostly based on estimation and therefore not equal to the following proven data: 1905 10,000, 1915 10,000, 1919 10,900, 1924 11,875, 1926 23,750.

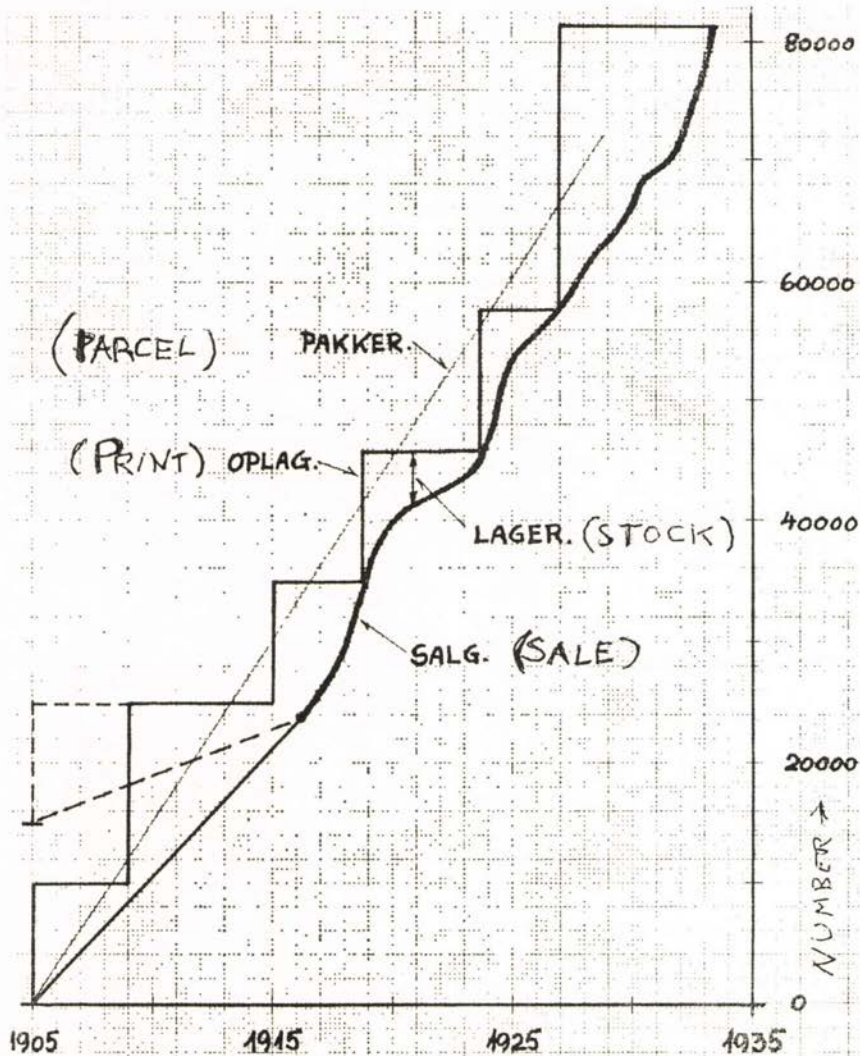
As mentioned the KGH statistic "Beretninger verrørende Grønlands styrelse" includes a record of sales and some explanation of the issue, but although it is stated here for each year how many were sold in Greenland (based on a yearly accounting from all Greenland colonies) only corresponding yearly sales at KGH in Copenhagen are found from the year 1917 and forward (based on yearly counting). The number of parcel post stamps sold before 1917 are given as one number covering all 12 years sale.

Excerpt from KGH statistics number of 1 øre sold (1905-1918)

Year	Greenland	KGH
1905-1909	542	?
1910-1912	377	?
1913-1914	169	?
1915-1916	148	?
TOTAL	1,236	7,836
1917	29	2,924
1918	235	5,997

In other words the sales by KGH for the two years 1917 and 1918 should be bigger than the total sales in the previous 12 years! This isn't understandable! Nor does the sales in Greenland show such a distribution. Estimated sales per year can be calculated in Greenland averaging about 100 per year. At KGH in Copenhagen, 700 per year before 1917 against a corresponding estimate of about 3000 per year after 1917. The difference is remarkable!

A closer analysis of 1 øre printed quantities, stocks and numbers sold gives a result which is understandable only if an extra print of 15,000 copies is assumed to have been issued about 1909. This is shown on the graph. The dotted line shows the sales and printed numbers as the "estimate" of KGH before 1917, and the thin line up to 1917 shows the sales estimated under the assumption of an extra print in the period. Stocks can be read as the



vertical distance between the line for sales and print. Another line shows the approximate number of dispatched parcels for comparison reasons. Note all graph data is drawn accumulated, each year's sales are added so it is easy to read the total.

At last a statistic as KGH sees it, calculated for the year end 1917. The principle used is simple: delivered stamps from printing reduced with the number sold (period 1905-1917) must equal stock year end 1917. The stock can be calculated to 20,000—9,072 or 10,928. It is known that the stock at KGH in Copenhagen was 9,201, which leaves the rest 1,727 to be distributed stock at the colonies in Greenland. We also know that in 1905 2,300 were dispatched to Greenland, of which there was sold 1,236 in the period. So to get a stock in 1917 at 1,727 it is necessary that there were sent 663 further

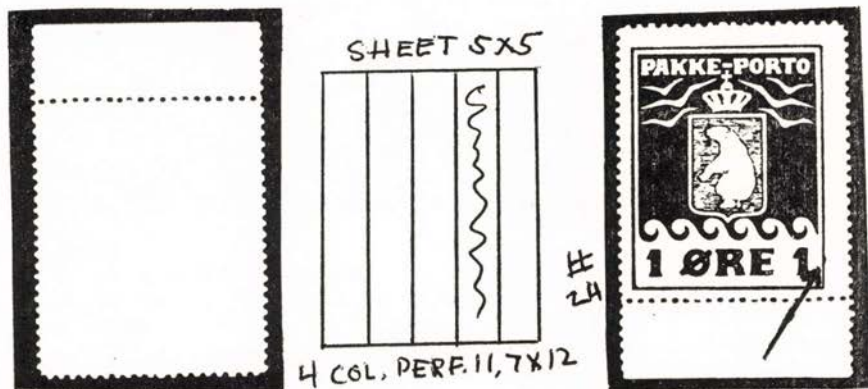
copies, more, against only 425 in the next period 1917-1931.

Failing to prove or disprove the KGH sales figure, what then is the result of this work so far? Only a reasonable suspicion that KGH probably estimated the total sales to balance the KGH "known" printings. But did KGH in 1945 know all the printed issues? This question could possibly be treated in a later article.

Still left behind is the possibility of proving there were two prints of the 1 øre perforated 12. A keen philatelist, Arne Nielsen of Copenhagen has pointed out a strange and questionable perforation. Checking all available sheets of 1 øre perf 12 have shown that no sheet until now has been found without a 4-column horizontal perforation measuring about 11.7 against the 12.2 "normal" for all others. One of the stamps in this 4-column happens to be with a variety shown in the illustration. Does this variety exist in both normal and mentioned perforation? It might be the solution for a possible discovery of a second print?

Examination of perforation on the 2 other values issued in 1905—5, 10 øre—do not show any corresponding perf. fault. This perf. fault therefore indicates that the 1 øre is likely to have been perforated AFTER the two other values, or what is more interesting in this connection, another point: a possibility of an extra print of the 1 øre perf. 12 after 1905.

The writer is most eager to hear from collectors having the 1 øre with the illustrated fault (#24 in sheet—see arrow near the right figure 1). Please write and be kind enough to include a photo or photocopy of the stamp to Torben Hjørne, P. O. Box 2047, DK 8240 Riskov, Denmark.



* S * C * C *

Notice Of Regional Meetings

At the INTERPHIL meeting of the SCC Board of Directors it was decided to schedule two Regional meetings this Fall.

- 1) October 16, 1976 in conjunction with SESCAL '76, to be hosted by SCC Chapter 17. To be held at the Los Angeles Hilton.
- 2) November 13, 1976 in conjunction with NOJEX '76, to be hosted by SCC Chapter 9. To be held at the Coachman Inn, Cranford, NJ.

Formal meeting for both of these shows are scheduled for 1:30 p.m., with other events following.

Letters

Dear Mr. Helm

I enclose a xerox of a cover sent me by my friend in Paris, Henri Tristant, who is a leading expert of postal history of French Austral and Antarctic Territories, and has published a book on the subject. This cover is unusual because it is franked with Danish stamps, having been posted on board the M.S. Thala Dan a Danish registry vessel while at sea. The letter was put off at Adélie Land and the stamps cancelled by the PO there with its Paquebot mark, in conformance to UPU regulations. The French Antarctic POs only received their Paquebot marks last year so this is a rather new usage. The Thala Dan is one of a series of ships of the Lauritzen firm, with names all ending in "-dan," which have been contracted yearly for the last decade or more to carry supplies and personnel to the various Antarctic bases of several nations.

Sincerely, Robert G. Stone



Dear Mr. Helm:

I noticed Mr. Ronningen's letter in the new POSTHORN, p. 11. It is easy enough to imagine several circumstances combining to make the really strange cover shown. The machine cancel missed the 100 ore stamp, so it had to be cancelled at the sectional center. Someone mistook the "6" for an "8" when setting the date stamp, or else the "8" broke while in the date stamp. Perhaps also the machine with two different dates was recently restored to service, and the clerk didn't observe that there were two year-dates to be reset at once.

I once received a registered piece of mail from Canada in which the Canadian and U. S. date stamps indicated different years. Canada, of course, is non-Nordic, and the symptom is simple non-consistency between two postal systems, rather than within one system. Not a very good example.

But recently I received, in a large lot of Finnish commemoratives on paper, a SoBankylä cancel dated May 7, 1973. This is evidently an incorrectly made device for SoDankylä, as the letter "b" does not occur in native Finnish words.

Sincerely, David Ames, #1213

Dear Mr. Helm,

It is well known that forgeries exist of the American Issue of Greenland of 1945, Facit nos. 19-27, but as far as I know only the 30 øre with faked red

overprint has ever been described and pictured in the literature, f.i. in FRI-MÆRKER FOLK og FILATELI on page 167. A few months ago I learned that the "wrong colors" also have been faked. I add a photo which shows above the fake overprint, and below a genuine one. The forgery is of the same type as the one previously described. The blue color of the forgery is distinctly clearer as the dark blue color of the genuine overprint. I guess the photo is self explanatory, the main difference being in the 5's and the 9. I am anxious to hear if any of your readers has ever seen the three small values of this issue, i.e. Facit nos. 19-21 with faked overprint.

Sincerely, Arno Debo



* S * C * C *

Notice Of Dues Increase

At the Board of Directors meeting held during INTERPHIL, it was decided by the SCC Board of Directors to increase the annual membership dues from \$5.00 to \$6.00, commencing with 1977. This action was taken to enable SCC to improve services to members and to defray recent and anticipated postage increases.

The Board also voted to discontinue the drop mailing of The POSTHORN to some overseas members. Our foreign members desiring to obtain The POSTHORN via air mail will be requested to defray this expense.

Swedish Revenue Stamped Paper Item

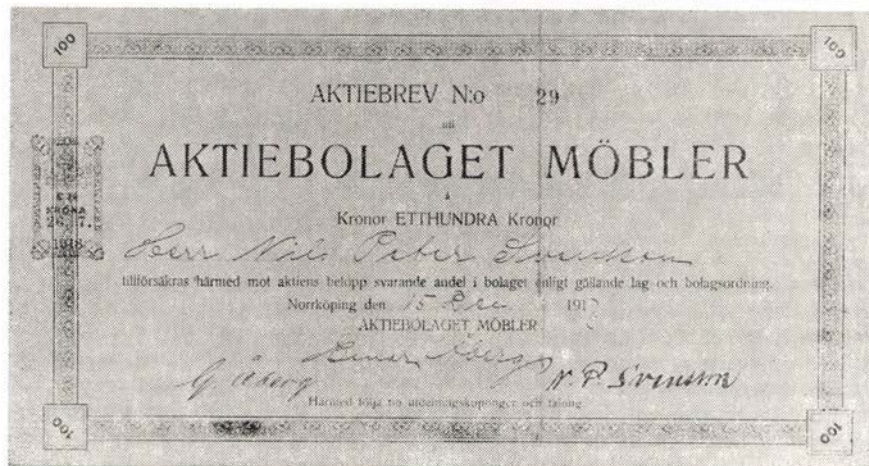
The illustration (reduced) shows a Swedish stock certificate for Aktiebolaget Möbler, or Furniture, Inc., which has a one krona engraved revenue stamp imprinted.

The certificate, which is folded into three equal parts to a size of 27.2 x 15.3 centimeters, or about 6 x 10 $\frac{3}{4}$ inches, is unwatermarked. The second section contains "Bolagsordning" or facts about the firm and its capitalization. The third section contains 10 perforated coupons, for the years 1917-26.

Printing of the red engraved stamp was done on the blank paper in the folded condition, since embossing effected in printing the engraved stamp is seen on all three segments.

The certificate, in blue ink, has its border printed over the red stamp, and the black certificate number 29 and the date 26.7.1918 on the stamp were added still later. It is interesting to note the time span between the 15 December, 1917 longhand date on the face and the printed 26.7.1918.

- Courtesy of Paul Nelson, and of "LUREN,"
- Reprinted from and cuts courtesy of American Revenuer



More "Scandinavia" On Postage Stamps

To Richard S. Wahlberg:

I read your article in the February 1976 Posthorn, and am impelled to suggest the following additions to your list:

1. United Nations Scott Nos. 183-184 depict a statue found in the Trusteeship Council, donated to the UN by Denmark, executed by Danish sculptor Henrik Starcke.

2. United Nations Scott Nos. 108-109. These depict the UN flag at half mast in front of the UN building, New York, and the date 18-IX-61 (all in Roman numerals). Although "officially" designated as a memorial issue for all UN personnel who perished in the line, the date inscribed is the date of the crash of Dag Hammarskjöld's plane at Ndola, and the issue was widely recognized as a Hammarskjöld memorial. A perhaps faulty memory suggests that the Aircraft Cachet for FDC of this issue carries a reference to Hammarskjöld, but I can't be sure any more.

3. United Nations Scott Nos. 179-180, the Chagall Window miniature sheet and single stamp, are, perhaps tenuously, also related to Hammarskjöld. The window was donated to the UN by members of the Secretariat in memory of Hammarskjöld and others who died in the crash. Lindner UN Catalog, p. 93 (1972 ed.)

4. The United Nations Scott Nos. 229-230, were issued to publicize the United Nations Conference on the Human Environment held in Stockholm in June 1972.

Nos. 2-4 above may not meet the criteria of your list, but a list of this sort, ought, in my opinion, to be broad and inclusive, allowing the collector to delete the stamps from his collection if he so chooses, rather than leaving him to guess that UNCHE stamps of Dominica (Sc. 337-340), Khmer Republic (Sc. 292-294, 294a, 304-305), Republic of Korea (Sc. 825, 825a), Morocco (Sc. 261), Pakistan (Sc. 321), Senegal (Sc. 361, C113), Syria (Sc. 617-618) and Tunisia (Sc. 578), all relate to a conference held in Stockholm. The stamps do have a theme relating to Scandinavia, although it is not expressed in words on the stamp. On the other hand, neither do the stamps of sculptures by persons who just happen to be Scandinavians, and whose works were chosen for reasons unrelated to Scandinavia, such as the refugees sculpture of Nygaard, which you list, and the Starcke statue in the Trusteeship Council, which you did not. The connection to Scandinavia is there, regardless of whether it is on the face of the stamp.

You could, as well, issue a list of UN stamps designed by Scandinavians or of UN stamps or stationery printed in Scandinavia. The list is voluminous as Olav Mathiesen and Ole Hamann (now chief of UNPA) are two of the most prolific designers UNPA has ever used, with perhaps 40 to 50% of the designs to date from those two.

Well, this is far enough into the night to carry a dispute of this sort. My own bag is UN, as you can see, as well as general Scandinavia. I also have been gathering a collection which amalgamates the two: philatelic material relating to the UN from Scandinavia, and by way of a sidelight to that, designed or produced by Scandinavians. This takes me to Scandinavian slogans relating to the UN, and such hard to find items as the cancellations from the 1924 UPU congress.

Sincerely, Benjamin H. Cohen, L-26

Chapter News

CHAPTER 7

The Chapter 7 Photography Committee now consists of Art Lind, Bjorn Lydersen, Art Silverstadt, Bernard Tepper, and Harry Wines. The committee members have sufficient personal photographic equipment that Chapter 7 does not have to buy any.

The first photographic project will be photographing Scandinavian forgeries for the November 10 chapter meeting—"Scandinavian Forgery Panorama." The first forgery materials which can be photographed are Henrik Pollak's SCC reference collection and his personal forgery collection, as well as the forgery material of individual Chapter 7 members. The Philatelic Foundation at 99 Park Avenue is willing to have the Chapter 7 photographers schedule a visit to photograph their Scandinavian forgery reference material. A trip to the APS at State College, Pa. to photograph their Scandinavian forgeries is also under study.

The *modus operandi* would be for Chapter 7 to pay for the cost of photographic materials. Because of the general interest and value of the forgery slides to all SCC members, the chapter could then turn them over later to the national SCC for distribution to other chapters, with the SCC reimbursing Chapter 7's expenses.

The November 10 chapter meeting on Scandinavian forgeries will reflect the efforts of various people. First, Henrik Pollak, our good dealer member and SCC Forgery Committee chairman, will chair the meeting. Secondly, the photography committee will provide slides of Scandinavian forgeries. Third and most importantly, chapter members will provide descriptions and analyses of the forgeries and how to distinguish them from the real thing on the basis of the stamp printing, type of paper, colors, perforations, etc.

The following chapter members have banded together in a Finland forgery study group: Kauko Aro, Michael Hvidonov, Reino Merikallio, and Richard Taylor. These Finland specialists will analyze actual Finland forgeries, slides and available literature on forgeries. The results of these studies will be presented at the November 10 meeting.

Chapter members are encouraged to form forgery study groups for the other Scandinavian countries. Please contact your chapter officers who will be pleased to coordinate the organization of additional study groups. Fellow SCC members are requested to send us literature on Scandinavian forgeries. Eventually, POSTHORN articles can be developed from the chapter's work and, as the ultimate possibility, a handbook on Scandinavian forgeries. (Considering the long birth labor of the DWI Handbook, perhaps we should measure the time span of the above literary endeavors in decades.)

CHAPTER 17

Chapter 17 will have a Regional Meeting at SESCAL Oct. 15-17. The meeting will be on Saturday afternoon, the 16th, with details to be available from Chapter 17, P. O. Box 57397, Los Angeles, Calif. 90057.

The San Diego unit of Chapter 17, under the direction of our Vice President Mike Horn, meets monthly. Data is available from him at P. O. Box 19363, San Diego 92119, Telephone (714) 462-9594.

Regarding the Carøe book mentioned in the May POSTHORN, Chapter 17 has a copy, and will gladly supply a photocopy for \$6 postpaid in the U.S. and Canada—other postage extra.

GOLDEN GATE CHAPTER 21

Election Results: The following slate of officers was nominated and elected for calendar year 1976: President—Paul Bodine, Vice-President—Ole Nordhavn, Treasurer—Erik Juul (reelected); Secretary and Newsletter Editor—Bryan Whipple. Since under National rules the regional directors are elected for two-year terms, Tom Olson remains Chapter 21's director during 1976.

Meeting Schedule: Club officers met February 3rd and devised the following meeting schedule for 1976. Plans for later in the year must be regarded as tentative at this time, but we will try to stick to our traditional pattern of meeting every second Thursday of the month at the Salvation Army Building in Oakland, with supplementary or substitute meetings at three major shows: Westpex, San Francisco; Filatelic Fiesta, San Jose; and East Bay Collectors Club, Oakland.

Approx Sat. August 7 — East Bay CC Show, Oakland, our 3rd birthday party
Thursdays: Sept. 9, Oct. 14, Nov. 11 — Salvation Army Bldg., Oakland
Probably Thursday, Dec. 9, prob. member's home, Berkeley, Julfest

The Salvation Army meetings start at 8 p.m. and the building is conveniently located at 601 Webster St., Oakland, adjacent to the Nimitz Freeway. From San Francisco try A-C Transit's "O" (Alameda) local or BART.

DUES, still due if not already paid. still only \$4. Please bring to meeting or mail to SCC Chapter 21, P. O. Box 1762, San Leandro, CA 94577. Let's have another 100% renewal year!

* S * C * C *

SCANDINAVIAN COLLECTORS CLUB

Treasurer's Report — Year 1975

CASH BALANCE:

January 1, 1975	\$ 3,576/20
-----------------	-------------

RECEIPTS:

Membership Dues and Fees	\$ 4,166.25	
Posthorn Advertising	623.70	
Closed Checking Account Balance	277.08	
Interest on Savings Account	153.79	
Advertising	314.00	
Refund (Interphil)	375.00	
Total Income—1975		\$ 5,909.82

EXPENSES:

Printing	\$ 3,588.88	
Postage	150.84	
Secretary's Expense	191.28	
Supplies	296.17	
Awards	221.00	
Library	114.47	
Convention Expense	50.00	
Dues	66.15	
Membership Cards	12.20	
Telephone	249.08	
Interphil	500.00	
Total Expense—1975		\$ 5,440.07

NET GAIN 1975

469.75

CASH BALANCE: December 31, 1975

\$ 4,045.95

Net Worth—December 31, 1975

BANK BALANCE: First Mid America State Bank of Coon Rapids \$ 4,045.95

W. R. Pieper, Treasurer

**MIDLAND STAMP COMPANY,
of Memphis, Tennessee . . .**

(does the name sound familiar? It should!)

Established in 1964, Midland began its philatelic services as a specialist in the philately of the Scandinavian countries.

As our business increased and our clientele expanded, we found more and more nice material coming to us for sale of other countries, including the USA.

Yes, we still offer "Scandinavia Specialized" in nearly every sale, and by "Private Treaty," both within our auction catalogs and directly to those on our "Want List."

If you have not seen one of our illustrated catalogs recently, all you need do is ask and we'll send you one. Lots sell from a couple of dollars up. Way up.

You might be surprised by what is included in our catalogs, especially if you read carefully and do so over a period of, say, a year.

Special buying interests, if noted with your request, will be entered on our "Want List." You will be contacted directly if such material comes to hand for sale, PRIOR to public offering.

MIDLAND STAMP COMPANY

Joe F. & Marian Frye, owners

Member PTS ASDA APS SCC

Telephone (901) 452-8701

(and 2 dozen others)

P. O. Box 22308 — Memphis, TN 38122 - USA

NEW MEMBERS

- 1977 ALLEN, Robert T., 25 Northcote Road, Westbury, NY 11590
Nordic countries by F. H. Bloedow L-24
- 1978 BROOKS, George, Rt. 1 Box 257-H, Alvin, TX 77511
Scandinavia, Bolivia by F. H. Bloedow L-24
- 1979 BROWN, A. A., 7 Hillside Road, Burnham-on-Crouch, Essex, OMO 8EY
England — Iceland by Gene Cass #1907
- 1980 EKMAN, Elon V., Jr., Brahegatan 38, 114 37 Stockholm, Sweden
Sweden, Scandinavia by F. H. Bloedow L-24
- 1981 FIELDS, Willie E., 2706 Blueberry, Pasadena, TX 77502
Sweden by F. H. Bloedow L-24
- 1982 GUYER, John O., Jack's Ten Cent Store, P. O. Box 1327, Redwood City,
CA 94063 — Scandinavia by F. H. Bloedow L-24
- 1983 HOPKINS, M. Burton, Jr., 20 Scottie Lane, New Castle, DE 19720
Scandinavia, U.S., Isle of Man by F. H. Bloedow L-24, Chap 13
- 1984 LAVENDER, Gilbert, c/o T&C Graphics, 50 Joey Dr., Elk Grove Village,
IL 60007 — Scandinavia by W. Joseph Harris #1516
- 1985 ENGDAHL, David A., 65 Sharon Drive, Rochester, NY 14626
Sweden, U.S. by R. J. Gustafson #676
- 1986 ERICKSON, Mrs. Pat, W. 1013 Sprague Ave., Spokane, WA 99204
Scandinavia, Ethiopia by F. H. Bloedow L-24
- 1987 JEFFERSON, Mary A., Route 5, Box 5056, Juneau, AK 99803
Scandinavia, Alaskana by F. H. Bloedow L-24
- 1988 KARROLIN, Karl, 1610 N. W. 31st Ave., Miami, FL 33125
Denmark, Finland, Greenland, Iceland by F. H. Bloedow L-24
- 1989 MATZEN, Richard N., Sr., Windwood, RR 3, Bluffton, IN 46714
Denmark, Sweden, Norway, World pre 1940 by F. H. Bloedow L-24
- 1990 SCOTT, David K., 3900 Connecticut Ave., NW, Apt. 102-G, Washington,
DC 20008 — Scandinavia, Ireland, Isle of Man, by J. R. Shepard #1210
- 1991 ALBERT, Gene L., 1225 Vienna Dr., #373, Sunnyvale, CA 94086
Scandinavia, U.S., Latin America by F. H. Bloedow L-24
- 1992 BJERCKE, Roy, P. O. Box 121, Jefferson, NY 12093
Norway by F. H. Bloedow L-24
- 1993 BLUME, Roe C., 10 Chestnut St., Wilmington, DE 19819
Norway, Scandinavia by R. D. Lipscomb #1816
- 1994 BODINE, Paul, 810 Gonzalez Dr., Apt. 2 L, San Francisco, CA 94132
Sweden, Norway, Iceland by T. F. Olson #1601
- 1995 CLARK, Thomas S., 769 Garson Ave., Rochester, NY 14609
Scandinavia, Japan by F. H. Bloedow L-24
- 1996 McKIVER, Edward R., P. O. Box 428, Redding, CA 96001
Scandinavia, U.S., et al by F. H. Bloedow L-24
- 1997 MILLSAPS, Linda L., 342 S. Douglas St., Salt Lake City, UT 84102
Denmark, Scandinavia by F. H. Bloedow L-24
- 1998 MORDAL, Oscar, 33 First Pl., Brooklyn, NY 11231
Scandinavia by R. A. Merikallio #1736
- 1999 MUNROE, Barbara D., RFD #3, Bil St., Derry, NH 03038
Scandinavia by A. J. Anderson #864
- 2000 NOLL, Paul Francis, 2026 Klingle Rd., N.W., Washington, DC 20010
Scandinavia, Sweden, Nobel Laureates by J. R. Shepard #1210
- 2001 NOLLE, Helen E., 285 Woodruff Dr., Webster, NY 14580
Scandinavia, Worldwide by R. J. Gustafson #676
- 2002 RAMIREZ, John S., General Delivery, Westmont, IL 60559
Faroes by F. H. Bloedow L-24

- 2003 SCHULTZE, Amy Bornstein, 424 Second Ave., Olean, NY 14760
Sweden, Scandinavia by F. H. Bloedow L-24
- 2004 SLUTTER, Carl G., Sr., 4 Pediwell Ct., Reisterstown, MD 21136
Scandinavia, U.S. by F. H. Bloedow L-24

ADDRESS CHANGES

- 1281 AHLSTROM, Gosta, 3111 W. 21 Ct., Panama City, FL 32401
- 911 ENGSTROM, Victor E., 195 C Newport Road, Cranbury, NJ 08512
- 680 KIRCHMAN, F. J., 2435 S. Sherman St., Denver, CO 80210
- 769 BRIGHTSEN, R. A., 1608 Valencia Way, Reston, VA 22090
- 984 LEE, Peter L., 10 Philips Lane, Rye, NY 10580
- 1623 SLOBODIN, Leonard, P. O. Box 281, Morton Grove, IL 60053
- 1810 SAUKKO, Wayne K., 6421 E. 127th St., Grandview, MO 64030
- 1945 ELLINGSON, Paul S., 716 N. 1st St., Yakima, WA 98901
- 1671 RASMUS, Alfred A., 3907 Neelon Drive, S., Salem, OR 97302
- 1655 CLOW, David, 4 Marlborough Court, Marlborough Road, Beeston, Notts.,
NG9, 2JA, England
- 1759 REED, Shirl D., 4864 Brookview Road, Rockford, IL 61107
- 1553 ARCARIO, Joseph B., Jr., 97-40 62nd Dr. #14C, Rego Park, NY 11374
- 1962 REIM, William, 18 Locust St., Warwick, NY 10990
- 1314 SCHMIDT, Jack F., 1415 College Ave., Canon City, CO 81212
- 1548 VON HELLENS, Bjorn, 2004 N. Hoover St., Los Angeles, CA 90027
- 1338 ARO, Kauko, 360 River Road, Apt. C, Nutley, NJ 07110
- 1028 DAY, J. R., 410 N. Civic Dr., Apt. 313, Walnut Creek, CA 94596
- 1372 CHRISTENSEN, John J., 1404 Churchill Dr., Ocean Springs, MS 39564
- 1787 SIMSON, James P., 1404 Polaris Dr., Mobile, AL 36609
- 1512 BROWN, Jerry M., P. O. Box 1321, Cpringfield, VA 22151

DECEASED

- 865 Harold J. Brown, 6713 Brookside Lane, Folsom, CA 95630

RESIGNED

- 1538 Earl E. Elliot, 6700 Starvrest Dr., Charlotte, NC 28210

REMOVED FROM ROLLS

- 1514 Alvin J. Hansen, 422 Throop St., North Babylon, NY 11704
- 1800 David C. Trounce, Box 1692, Kanata, Ont., Canada, KOA 2C0

RESTORED TO ROSTER

- 1279 L-23 THOMPSON, Neil D., 420 Riverside Dr., 10-G, New York, NY 10025

SCANDINAVIA

Large Stock — Moderate Prices

Strong in 19th Century, including the better items; Covers, Postal Stationery, Cancels, Errors, Proofs, Varieties, etc. Please call for an appointment before coming.

HENRIK POLLAK

55 West 42nd Street

New York, N. Y. 10036

Phone (212) OX-5-1348

APS

SPA

SCC

ASDA

THE MARK OF QUALITY

Artist:
Tom Hultgren



Engraver:
Zlatko Jakus

Photographer:
Åke Svensson



Engraver:
Czeslaw Slania

Photographer:
T. Jacobsson



Engraver:
Zlatko Jakus

In Sweden we do not believe that artistic quality should be anonymous.

— It is the high artistic quality that makes collecting Sweden such fun, is a statement one often hears when talking to a Sweden collector.

High quality is characteristic of Swedish products. The constant aim at quality is also reflected in our stamps. Prominent artists and photographers are responsible for the motifs, and we have some of the foremost engravers in the world.

As of nearly a decade the names of the artist and the engraver are printed on Swedish stamps. The signatures signify that the artists take personal responsibility for their work. The names are a mark of quality. The motif is named on many Swedish stamps and sometimes the year

of issue is indicated as well.

We believe that this information increases the value of the stamps. To collect stamps by a certain engraver is an example of a special field, which is becoming popular in Sweden. Perhaps this would be something for you too?

3 New Swedish Stamps. The stamps "The Telephone Centenary", "Bobbin Lace Maker" and "Auks" will be issued on 10 March, 1976.

Ask for Swedish stamps at your dealer's, who can also help you subscribe to new issues, or write for information to The Post Office Section for Philately PFA, Fack, S-101 10 STOCKHOLM, Sweden.

The Royal Swedish Post Office



SCANDINAVIA

Deal with America's leading specialists

SELLING?

Getting the best price for your Scandinavian collection means selling to a dealer who knows the value of your stamps. Being Scandinavian specialists, we pay proper value for specialized material. When we appraise a collection, there is no guessing at market value as our Scandinavian auctions are an international market place for general and specialized Scandinavian stamps.

The rapid growth and success of our auctions allows us to be very competitive as cash buyers. We are small enough to be interested in better single items, and large enough to professionally and financially handle large collections. We will travel for important properties.

BUYING?

Our Scandinavian specialized auction catalogs (fully illustrated) have been averaging over 1,000 lots of choice Scandinavia in the \$5.00 to \$2,000.00 range. Always proofs, errors, covers, varieties, and rarities. Next catalog free on request.

SCC

DANAM STAMP COMPANY



P. O. Box 273

Springfield, Pa. 19064

Phone (215) 853-2862