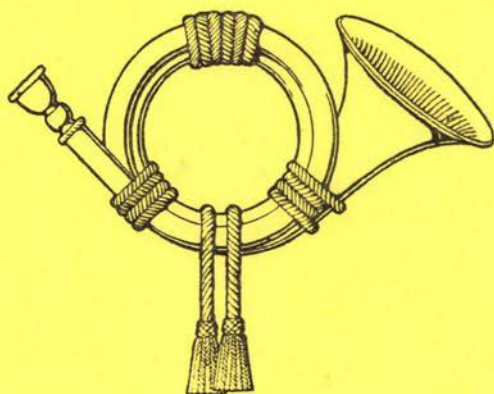


ISSN: 0551-6817

Vol. 35, No. 2, Whole No. 134, May 1978

The
POSTHORN
TM

"The Bank of Scandinavian Philatelic Knowledge"



OFFICIAL PUBLICATION OF THE SCANDINAVIAN COLLECTORS CLUB

THE POSTHORN

Official Publication of the
SCANDINAVIAN COLLECTORS CLUB

Published Quarterly

Vol. 35, No. 2, Whole No. 134, May 1978
Copyright 1978 Scandinavian Collectors Club

Annual membership dues in the Scandinavian Collectors Club is \$6.00
of which \$4.25 is for a subscription to The Posthorn.

Subscriptions to The Posthorn are \$9.00 a year to non-members, or \$2.00 a copy.
(Subscriptions to The Posthorn include all supplementary publications.)

Orders should be addressed to the Secretary.

Office of Publication: 821 Vermont Street, Lawrence, Kansas 66044
Second Class postage paid at Lawrence, Kansas

Postmaster: Send form 3579 to 821 Vermont St., Lawrence, Kans. 66044

Changes of address should go to the secretary or if to the office of publication
note on outside of envelope "Change of Address"

Editor:

Joe F. Frye, P. O. Box 22308, Memphis, Tenn. 38122

to whom all material and communications concerning The Posthorn, except
address changes and advertising, should be sent.

Associate Editors:

Chapter News—Paul A. Nelson, P. O. Box 57397, Los Angeles, CA 90057
Individual Countries' articles

Faroe Islands: M. D. Hunewell, 6831 Ardale Dr., St. Louis, MO 63123

Finland: M. E. Hvidonov, 4 Dwight Lane, Great Neck, L. I., NY 11024

Iceland: Barbara R. LeBlanc, 997 Alameda, Redwood City, CA 94061

Norway: Jared H. Richter, 1353 Plum St., San Diego, CA 92106.

Sweden: Gerald H. Grosso, Neah Bay Lab., P. O. Box 194, Neah Bay, WA
98357

Denmark and Greenland: Svend Yort, 7707 Meadow Lane, Chevy Chase, MD
20015

D.W.I.: V. E. Engstrom, 195-C Newport Road, Cranbury, NJ 08512

Business Manager:

Floyd A. Walker, Box 82, Grandview, MO 64030—Advertising

OFFICERS

President — Donald F. Halpern, P. O. Box 846, New Providence, NJ 07974

Vice President — Alan Warren, P. O. Box 17124, Philadelphia, PA 19105

Secretary — Fred H. Bloedow, 810 Dobson St., #1-A, Evanston, IL 60202

Treasurer — Ronald B. Collin, P. O. Box 63, River Grove, IL 60171

Directors-at-Large — George B. Kopolowitz, P. O. Box 183, Brooklyn, NY 11218

Jared H. Richter, 1353 Plum St., San Diego, CA 92106

Wayne C. Sommer, 710 Roeder Rd., #1206, Silver Spring, MD 20910

Mart Manager — Wade Beery, Box 3781, Orlando, FL 32802

Librarian — S. H. Hanson, 4317 North Monitor Ave., Chicago, IL 60634

Publicity Chairman — M. D. Hunewell, 6831 Ardale Dr., St. Louis, MO 63123

By-Laws Committee Chairman — B. H. Cohen, Box 1674, Chicago, IL 60690.

TABLE OF CONTENTS

Foreign Port of Arrival Markings of Icelandic Materials -----	First page
A Review by Thorsteinsson -----	33
President's Message — CAPEX '78 -----	36
Editor's Mailbag -----	39
Should SCC Become An Affiliate of APS? -----	47

Foreign Post Of Arrival Markings and Transit Marks On Icelandic Material

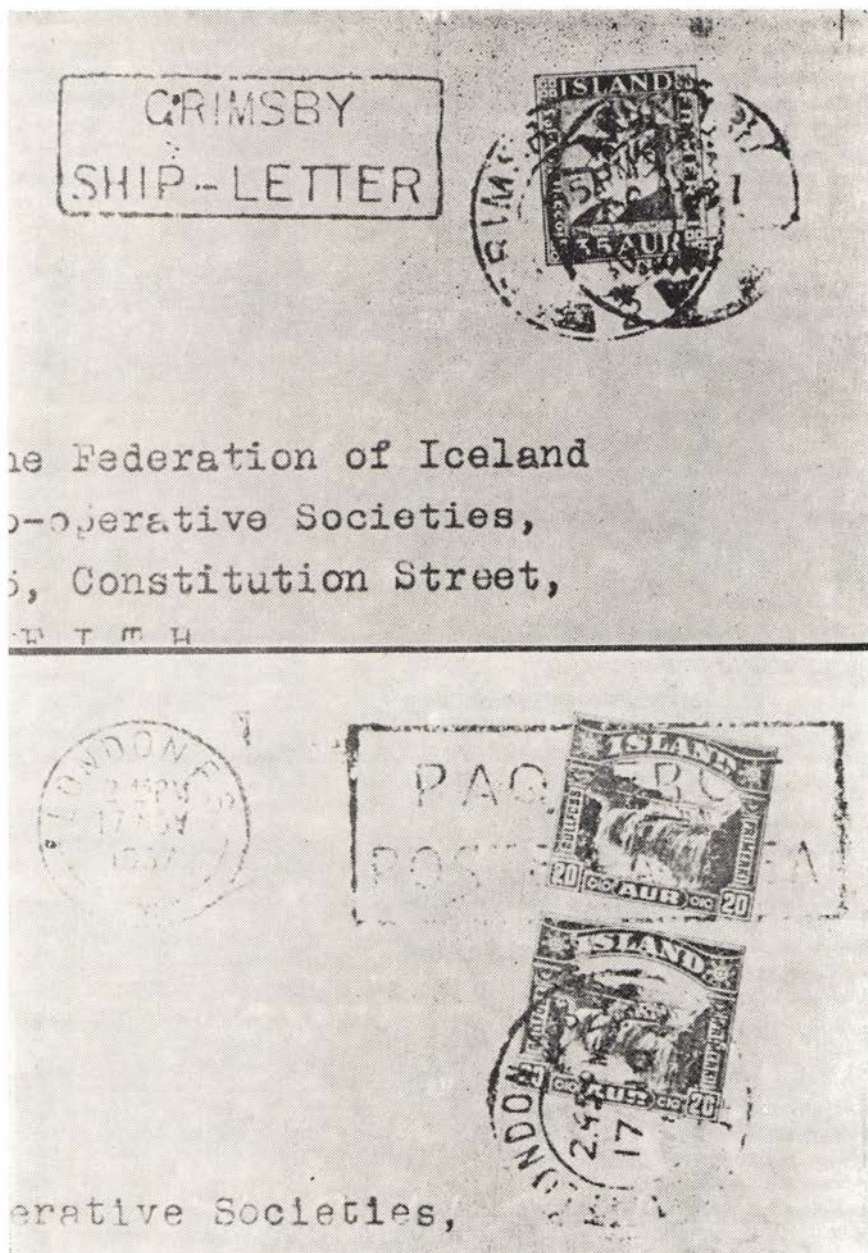
by G. G. Cass, England

On the invitation of the Associate Editor for ICELAND, I am presenting



Top: Kristiansand, Norway "Star" CDS with 30 mm boxed "Paquebot"
Bottom: Stornoway, Isle of Lewis single ring CDS as Transit mark

a list of markings on cover most of which were mentioned in the June 1976 and 1977 issue of *The Scandinavian Contact* which is published by the Scan-



Top: Boxed "Grimsbly Ship Letter" with Grimsby "2" CDS

Bottom: London "Paquebot—Posted at Sea" machine cancel and London F. S. Paquebot CDS

dinavian Philatelic Society. The intention of this article is to bring to light examples of less common PAQUEBOT markings and foreign cancellations on covers of Icelandic origin.

BRITISH ISLES

- | | | |
|----------------------------------|---|---------------------------------|
| a) Edinburgh | 45mm "Paquebot"
(Studd Type A6) | Edinburgh "Star"
CDS 1929 |
| b) Grimsby | "Grimsby Ship Letter"
(Studd Type S10)
(Hosking 35) | Grimsby "2"
CDS 1936 |
| c) Hull | 31.5mm "Paquebot"
(Studd Type A13)
(Hosking 46) | Hull, Yorkshire
"6" CDS 1936 |
| d) Aberdeen | "Aberdeen Ship Letter"
(Studd Type S1)
(Hosking 153) | Aberdeen "3"
CDS 1929 |
| e) Aberdeen | "Aberdeen Paquebot"
(Studd B33) | Reykjavik Meter
Mark 1939 |
| f) Glasgow | Odd corner boxed
"Paquebot"
(Studd Type A11)
(Hosking 167) | Glasgow "10"
CDS 1938 |
| g) London | "Paquebot—Posted at
Sea" machine cancellation
(Studd Type B16)
(Hosking 74) | |
| | also: "London F. S. Paquebot"
CDS 1937
(Studd Type B17) (Hosking 75) | |
| h) London | "Shipletter London Paid" 1883
(Studd Type S18) (Hosking 68)
as transit mark, also
Edinburgh boxed Ship Letter
(Hosking 159) | |
| i) Methil, Fifeshire
Scotland | 34mm "Paquebot"
Methil, Fifeshire
as transit mark
(Hosking 179) | CDS 1910 |
| j) Queenstown | Single ring "Queenstown
Ship Letter" Robertson type
S2A as transit mark
(Hosking 208) | |
| k) Stornoway
(Isle of Lewis) | Card to Copenhagen with
Reykjavik
single ring Stornoway
1907 as transit mark | CDS 1907 and
CDS |
| l) Troon | Card to Copenhagen with
Reykjavik
"Ship Letter Troon" (Studd S29)
also Troon "330" CDS 1904
as transit mark | CDS 1903 and |
| m) Blyth | Card to Holland with
CDS 1903 and "Ship Letter
North ^d " (Hosking 4) as transit mark | Reykjavik
CDS 1903 and |

NORWAY

- | | | |
|-----------------|--|---------------------------------|
| a) Bergen | 33mm "Paquebot"
(Studd Type A93) | Bergen
"Star" CDS 1924 |
| b) Kristiansand | 30mm boxed "Paquebot"
(Studd Type A95)
(Hosking 319) | Kristiansand
"Star" CDS 1928 |



"Aberdeen Paquebot" single ring arrival marking

—Photos by Frank LeBlanc

BIBLIOGRAPHY

"Paquebot" and "Ship Letter" Cancellations of the World, 1894-1951. By M. A. Studd, 1953, Robson Lowe Ltd., 50 Pall Mall, London, S.W.1. England.

Paquebot Cancellations of the World by Roger Hosking, M.A., 1977, published by the author at Greyfriars, Ice House Wood, Oxted, Surrey, England.

The author would like to hear from any member interested in Icelandic maritime mail in order to trade information and material. Please write: G. G. Cass, 63 Lumb Lane, Bramhall, Stockport, Cheshire, SK7 2BA England.

SCANDINAVIA

Large Stock — Moderate Prices

Strong in 19th Century, including the better items; Covers, Postal Stationery, Cancels, Errors, Proofs, Varieties, etc. Please call for an appointment before coming.

HENRIK POLLAK

55 West 42nd Street

New York, N. Y. 10036

Phone (212) OX-5-1348

APS

SPA

SCC

ASDA

A Review

by Sigurdur H. Thorsteinsson, Iceland

One Hundred Years of Icelandic Stamps, 1873-1973. Published by the Icelandic Post and Telecommunications Administration, Reykjavik 1977. Author, Jón Adalsteinn Jonsson. 471 pp. Multiple pictures, multicolored.

The long awaited English version of this book was published last autumn. It is just as well done as the Icelandic version and some of the errors in the Icelandic version have been corrected. The price is also the same: Icel. kr. 30,000 or at the time of this writing US \$139.53. (Ed. note: Export price Icel. kr. 25,000 including postage.)

When reviewing this book, one must bear in mind what the author said on page 146 about reprints and other technical details: "In this historical review, it is not possible to go into detail about the differences in individual reprintings. Readers who are interested must be referred to the handbooks and specialized essays about Icelandic stamps."

Bearing in mind this statement, I hope the reader understands what I mean in this review when I give the book my warm acclamation, as a book on the historical aspect, even interesting at times. But in search of technical details, you must go to **Icelandic Stamps**, any edition to see if there is a slanted 3 on the 3 skildings; how many printings there are of the aurar issues (because there are many missing in all other catalogs); or, even to find the right dates of issue.

For instance, the Jón Sigurdsson was issued on the 11th and 15th of December, 1911, and the 4 aurar on the 17th of June but not on December 19th as stated in the book. On page 428, there is further a number 1 and 2, then all of a sudden 8 -14. But in the text on page 430, these stamps are referred to as illustrated on page 429. They neither exist there nor in the chart on the page. So one gets a little bewildered.

A more serious thing is when the face of the stamp has been altered. This happens for instance on page 418, the Europe issue of 1969. The year on the 13 kr. stamp has been reduced while it is still to be found on the 14.50 kr. Was this a variety? Further similarities can be found.

Why is the number of stamps in the sheet of the Sports and Glaciers not stated on page 392, but when it comes to Bessastadir, all of a sudden it says, "50 stamps per sheet?" And as we have come to the Sports, let us look at page 388 in the Icelandic version, where on that page is stated "The lettering on the stamps is: GOÐ IÐRÓTT ER GULLI BETRI" while on the next page, facing, the reader can see on the stamps that it is GOÐ ÖPRÓTT GULLI BETRI. This has been corrected in the English version, but shows us that error correcting was being done, even after the printing process was at full speed.

There is another error on page 452 which will not be corrected until the next edition. There it is stated that the overprint of the Millenary official issue is **Pjónustufrimerki** but again on the next page we read clearly **Pjónustumerki**.

When writing about the rough perms of the Viking, Thorfinnur Karlsefni, on page 372, the author says, "This stamp was reprinted in 1947 and 1948 when the printing works delivered it with large perforation. So this was in fact a new stamp." This is said about the 60 aurar Geysir and then about the 5 kronur brown Viking: "This stamp was reprinted in 1947 and 1948. The same applies to its perforation as to that of the last stamp mentioned above." Well, this is good, but if I was just a student of Icelandic philately, I would

ask: What is a large perforation? And what type of perforation was this? Why not just state Perf. 11½?

And another question. Are the stamps of the Republic period all valid? Why not state which are still valid and which have ceased validity?

Now let us turn to page 354, the Air Mails of 1934. On that page it says that the 30 aurar Chr. X was valid for postage until 31st December 1945. It also says that the 10 and 20 aurar of the Airmails was reprinted in 1939 but it does not say that the 25 and 50 aurar were also reprinted and had also perf 14 apart from that of 12½.

On page 322, when summing up the overprints of 1921-1930, all the dates are given but that of the 10/5 aurar Chr. X. Why? It is the 8th of June, 1922 as stated in my numerous articles on this issue. I have stated this since 1971 and no one has objected. So once more go to **Icelandic Stamps**, any edition.

On page 52, some of the watermarks are mentioned and even that varieties can be found, but just as a historical aspect? There is no mention of the history of how the Lotus flower found its way to Iceland as a watermark on Icelandic stamps. We need not know that there is a watermark on the 1973 Asgeir Asgeirsson issue and can even be found inverted, or what?

A statement that there are no proofs of the 3 skildingar is not valid. They exist and have NOT leaked out of the Thiele printing house. The aurar issue was printed in both 50s and 100s. The fact is that only the large 3 aurar were printed in 100s or whole sheets at a time. The stamps of the 4, 25, 50 and 100 aurar and the official of 4 aurar, were at any rate printed in 50s or half a sheet at a time. This can be proven by clichés sent to Iceland from Denmark. The author should do research into the journals of Thiele which are still intact. That needn't be in Denmark. I have photostats of them in Iceland.

We, that claim that we are knowledgeable about Philately, know that once an error about a stamp or any fact in Philately or Postal History is published, it tends to repeat itself as gospel truth for years. We may fight to erase and correct it but now and then it pops up again. The author of this book has committed the crime of blowing life into a "Ghost" of this kind. On page 30 he has a lengthy speculation on how the three ring canceler number 237, Seydisfjörður, could have been sent for use at Berufjörður. Thank God he ends his speculation by stating "though there is no source to prove this."

Therefore my question is: has an author, who claims to be an authority, and believes himself fit to write a work like this, permission to do such a thing and write such a statement, in a book offered to the public to read? He states in his own words that he has been meditating on a myth without the slightest proof.

We have considered the written contents of this book. Now let us turn to the printing and binding.

The collectors of Icelandic stamps can be grateful to the PTT and the Ministry of Communications for publishing a work of this quality for them. The printing is perfect as can be of both stamps and text. The binding of the book is also a masterpiece of work. We are grateful for all this. But each collector must ask himself whether it is worth while to pay this sum for such a beautiful book, according to its contents.

Let us form a committee next time we produce such a book so that no one person can blindly state errors of fact or create myths. We have more than enough of that in Icelandic philately.

Let me repeat the thanks to the officials who made production of the book possible.

Sigurdur Thorsteinsson

* S * C * C *

A CANCELLATION FOR CONVERSATION



On a rainy January evening, your Associate Editor, ICELAND, visited the Golden Gate Chapter #21 meeting in Oakland, California. President Erik Juul welcomed us and we spoke on the need for articles on Icelandic philately. Then the Mart books were passed around the table and enjoyed by all.

Treasurer Rene Reboh brought two stamps of interest to show the group. The first was the blue/gray 10 aur Christian X official with an inverted watermark hitherto unknown and not mentioned in Facit.

The second stamp, pictured above, brought forth a lot of discussion and no firm agreement. The stamp itself, the 5 aur Numeral of Value perf 12 $\frac{3}{4}$, was interesting as it had a partial offset on the back; but it was the cancel that caused the discussion. The district mark SEYÐISFJÖRÐUR was easily recognized. There was also a light bridge cancel covering the right half. The numerals were askew. If they were inverted there would be an upside down 4 next to a 5 over a 10. Jory Norballe thought that there were two district cancels and a bridge cancel. Jerry Silberman said that there were two cancels, one district and one bridge and that the upside down 5 was a defective 2. What do you think?

The Golden Gate chapter meets on the second Thursday of the month at 8 p.m. at the Salvation Army Building, 601 Webster St., Oakland, CA.

B. L.

The President's Message

A unique series of events has provided us with the opportunity to have an unusually fine annual meeting. The first decision was to hold our Board and annual meeting at CAPEX exhibition in Toronto. The Board of Directors meeting will be held at 10 a.m. at the Holiday Inn on June 10. Our annual meeting will be held on June 11 at 2 p.m. at the Automotive Building of the Canadian National Exhibition Center. The site is a reasonable distance for most officers and I hope you can all make it.

The attraction of combining our annual meeting with an International show is a philatelic treat we all enjoyed at INTERPHIL. In addition, S.C.C. is sharing a lounge with the Postal History Society of Canada so that those of us at the show will have a place to meet other S.C.C. members, to sit down and chat, and to meet potential new members. Last, but not least, our May POSTHORN, going to press just before the show, will carry the latest information for those of us attending.

As you can guess, all of this doesn't "just happen." Behind the scenes, Al Warren, our V.P., and Jack Banks in Toronto have prepared the ground work for all of this. There is one part where they need your help: they need members to man the lounge to answer questions and sign up new members. Please send Al Warren a post card (P. O. Box 17124, Philadelphia, PA 19105) listing the days you will be at the show and the hours you would like to help out at the lounge. This is one way you can pitch in and help us as well as have a good time. It may seem strange if you've never tried it, but helping out at the lounge can be one of the high points of a stamp show. You meet your friends, you meet people you may have only written to or heard about, and you meet collectors who are excited to find that there is an organization that caters to their specialty, Scandinavian Philately.

All in all, I expect our annual meeting at CAPEX to be an event we can all look back on with fond memories that we were part of another exciting international exhibition as members of the Scandinavian Collectors Club. See you at CAPEX if not before.

. . . Don Halpern

SCC At CAPEX

Schedule of Events

FRIDAY, JUNE 9

CAPEX '78 Opens, Canadian National Exhibition Grounds.

SCC Reception, 6-8 p.m., at the SCC Suite, Downtown Holiday Inn.
8 p.m.-? Executive Committee Meeting, SCC Suite.

SATURDAY, JUNE 10

Board of Directors Meeting, SCC Suite, 10 a.m.-?

SCC Dinner at a Scandinavian Restaurant, 7 p.m.

SUNDAY, JUNE 11

SCC Annual Meeting, 2-4 p.m., at CAPEX Exhibition.

1. Welcome—W. J. Banks, Chapter 10, Toronto.
2. President's Message—Donald F. Halpern.
3. Slide Program, "Greenland Parcel Stamps, Cancells and Varieties," presented courtesy of Delaware Chapter 13.

The 1978 annual SCC meeting at CAPEX promises to be a gala affair. With the ideally situated central location of Toronto, excellent representation from the East, Midwest, and West U. S. contingents is expected along with our Canadian brethren. W. Jack Banks of Chapter 10 in Toronto has made a number of arrangements to insure a successful event.

SCC will have a suite at the Toronto Downtown Holiday Inn where a block of rooms has been reserved for SCC members. The Inn is located at 89 Chestnut Street, near City Hall, and is claimed to be the largest Holiday Inn in the world! Other nearby hotels include the Sheraton-Centre, the King Edward and the Chelsea Inn. Buses will run from this general area out to the National Exhibition where the show is being held.

On Friday evening from 6 to 8 p.m., Chapter 10 will host a reception at the Holiday Inn Suite, welcoming SCC members and their spouses to CAPEX and Toronto. Following the reception, the Executive Committee will meet at the suite.

On Saturday, most SCC members will want to take in the CAPEX Exhibition at the Canadian National Exhibition Grounds, located near the lake between Lakeshore Drive and Gardiner Expressway. Saturday morning, the Board of Directors will meet at 10 a.m. at the Holiday Inn suite. Saturday evening at 7 p.m. will be a SCC dinner at a Scandinavian restaurant in Toronto.

Sunday will afford more time to view the 3500-frame CAPEX Exhibit. The SCC Annual Meeting will be held from 2 to 4 p.m. at the CAPEX Exhibit. The SCC Annual Meeting will be held from 2 to 4 p.m. at the CAPEX Show, at which time President Don Halpern will present a status report on SCC, and indicate future plans. This will be followed by one of the latest slide programs from our Library.

SCC is sharing a lounge at CAPEX with the Postal History Society of Canada. We will need volunteers to help with the lounge during the entire show. Please sign up at the lounge and indicate when you can "man" the lounge. Those who may be staying beyond the first weekend of CAPEX will be especially appreciated if they can help out. Directions to the Restaurant for the Saturday night SCC dinner can also be picked up at the lounge. It is important that you register at the lounge as early as possible and indicate how many will be attending the dinner, so that appropriate arrangements can be made.

"Toronto" is an Indian word which means, interestingly enough, "meeting place." According to records, the area was purchased from the Indians by the white man for 149 barrels of goods (possibly a better buy than Manhattan, in retrospect). The city offers the visitor several attractions, including a number of fashionable shops, not to mention O'Keefe beer.

Right at Exhibition Place is the Hockey Hall of Fame for sports enthusiasts. For those staying in Toronto a few days, there will be baseball games at the stadium (practically next door to CAPEX) with the Twins on June 12 and 13, and with the Brewers on June 15. There is an excellent Zoo located not too far away in Scarborough.

Casa Loma is a medieval-style castle built by Sir Henry Pellatt just before World War I, open daily to the public to view the elegant furnishings. In the Don Mills section of the city is the Ontario Science Centre, and near the University of Toronto are the Royal Ontario Museum and the Planetarium. Art buffs should be sure not to miss the Art Gallery of Toronto which houses the world's largest collection of original sculptures by the famous English sculptor Henry Moore.

In all, a trip to Toronto and CAPEX for the SCC convention should prove an exciting holiday. A number of our overseas members have indicated they expect to attend also. It should be a grand time to renew friendships and make new acquaintances. See you in Toronto!

. . . Alan Warren

"CAPEX '78" June 9-18, 1978

On behalf of Chapter 10, may I express our pleasure at the SCC decision to hold its Annual Meeting here during CAPEX, thus giving us an opportunity to welcome many SCC members—and, we hope, prospective members—to this city.

The Annual Meeting itself and other SCC activities, in addition to viewing 3500 frames and browsing at over 100 dealers' booths, will no doubt take up most of the members' time during the June 9-11 weekend. However, we hope that there will be opportunity for visiting points of interest in Metropolitan Toronto, and indeed that a number of members and their spouses can extend their stay here beyond the weekend. We shall do all in our power to give assistance to those wishing to see some of the highlights of the area.

CAPEX will be located in Exhibition Park, where the world's largest annual fair, attracting some 3½ million visitors, is held. Within steps of CAPEX is Exhibition Stadium (American League evening games are scheduled June 12-13-14), and Ontario Place, an entertainment centre on man-made islands with something for every age and taste. Other showplaces in what FORTUNE magazine has called "the World's Newest Great City" include the C. N. Tower—the world's tallest free-standing structure (with revolving restaurant at the 1200-foot level); the Ontario Parliament Buildings, with the University of Toronto downtown campus, the Royal Ontario Museum and Planetarium nearby; the Ontario Science Centre and the new \$40,000,000 zoo.

Looking forward to seeing you all—

W. Jack Banks,
President, Chapter 10, Toronto, Ontario, Canada

* S * C * C *

Posthorn Printer Honored

HARLAN W. MILLER, printer of the POSTHORN and about three dozen other philatelic journals, was awarded a special Gold Medal by the American Philatelic Society's Writers Unit No. 30 at ARIPEX '78 in Tucson, AZ, on January 22, 1978.

Miller's nearly fifty years' experience as a printer saw his first, and his own KAW CHIEF philatelic magazine produced in 1934, followed by a continuing career in printing—and often editing—philatelic journals.

Among his products were THE AMERICAN REVENUER, PRECANCEL FORUM, A.S.D.A. BULLETIN, GERMAN POSTAL SPECIALIST and the STAMP WHOLESALER. Current projects include the American Philatelic Research Library's PHILATELIC LITERATURE REVIEW, the POSTHORN, the CZECHOSLOVAK SPECIALIST, FRANCE & COLONIES PHILATELIST and the LIONS INTERNATIONAL PHILATELIST.

The diploma accompanying the Writers Unit Gold Medal reads "For his meritorious contributions to the philatelic scene in producing publications for dozens of organizations, performing every task from copywriting to setting type, proofreading and mailing. Though always in the background, with readers seldom even aware of his efforts, his contribution to philatelic journalism has been inestimable."

This editor joins the many with whom Mr. Miller has generously shared his time and talents in offering his congratulations for a well-deserved recognition, and his thanks for the assistance and cooperation without which the POSTHORN would be an impossible task.

. . . Joe F. Frye

The Editor's Mailbag . . .

V. E. ENGSTROM advises on March 26, 1978 that Jury President for HAFNIA '76 Helge Witt died suddenly early in that month, according to advice from Dr Geill in Denmark.

HERBERT BERNSTEIN, press relations officer for the Postal History Society, Inc., asks that we announce that Society's program of activities at "CAPEX '78" on June 12, 1978 at 1:00 p.m.—a seminar in conjunction with Postal History Day of the show, featuring such well-known speakers as A. G. RIGO DE RIGHI of the British National Postal Museum; DR. NICHOLAS TRIPCOVICI of Romania; C. ANGUS PARKER of Great Britain and PROF. DR. VITO CALIERNO of Italy.

ARNE KJELDEN LARSEN, Vice-president/Secretary of Posthistorisk Selskab asks that future communications to that magazine be addressed to MR. P. BLOCH-POULSEN, Kong Christians Alle 16, DK-9000 Aalborg, Denmark, the new editor. Mr. Erik Menne-Larsen is no longer associated with P. S., Mr. Larsen adds.

New associate editors, completing our roster of these very welcome volunteers, who have accepted the challenge and will serve our society and journal are:

SVEND YORT, 7707 Meadow Lane, Chevy Chase, MD 20015—Denmark & Greenland.

VICTOR E. ENGSTROM, 195-C Newport Road, Cranbury, NJ 08512—Danish West Indies.

A complete list of associate editors for the POSTHORN appears on the inside front cover of this issue. If you have information on the philately of any country noted, please contact the associate editor listed and that knowledgeable person will gladly assist you in placing your knowledge in print for the benefit of all of us.

LESTER E. WINICK's exhaustive article "Iceland: A Bibliography" appeared in the PHILATELIC LITERATURE REVIEW, first quarter 1978 edition, Vol. 27, No. 1, second series No. 98, and by kind permission of author Winick, editor CHARLES J. PETERSON of the PLR and others concerned, we plan to offer this valuable reference as a supplement to the POSTHORN accompanying an edition of the latter journal later this year. Listing over 550 articles in over 625 issues of 57 periodicals, Winick's work will serve as a major aid to all those interested in Iceland philately for a long time to come. Winick very kindly added to his letter giving permission to reprint ". . . I'll give you a supplement once a year for printing in the POSTHORN . . . entail(ing) additional information as reported and discovered, and new material." How generous can one man be? Thanks, Les!

Speaking of SVEND YORT, his interesting article "D.W.I.: Check for major varieties" appeared on Page 8 of STAMP COLLECTOR, April 8, 1978 edition. Even if you think you're well versed in the philately of that interesting little area, read this piece . . . you might learn something you'd not known before.

The U. S. PHILATELIC CLASSICS SOCIETY, INC. offers a seminar at CAPEX '78 at 4:30 p.m. Saturday, June 10, featuring SUSAN McDONALD discussing crossborder mail with Canada during the classic period . . . USPCS headquarters at CAPEX will be the Royal York Hotel, where the CAPEX shuttle bus will stop. The annual meeting of the USPC will be held Sunday, June 11, led off by ROY WHITE, executive director of the Philatelic Foundation with remarks on a scientific approach to the classics of the U. S. PAUL

J. WOLF will present a program Sunday, June 11, at 5 p.m. on the U. S. Black Jacks, including slides on Corner Cards, Fancy Valentines and Foreign Rates.

The prospectus for STaMpsHOW 578, the annual convention/exhibition of the American Philatelic Society, is available—for the open philatelic competitive exhibition portion of that event—from APS, Box 800, State College, PA 16801. The STaMpsHOW '78 event is scheduled for September 21-24, 1978 at the Indiana Convention-Exposition Center, Indianapolis, IN. Prospectus, rules and entry form for the Philatelic Literature event at the show is available (deadline for receipt of entries is MAY 30, 1978) from the editor of the POSTHORN, and please enclose SASE with request for these items to save time.

Those with access to the APS' journal, THE AMERICAN PHILATELIST, might share my personal pleasure in seeing my wife's article, "Sweetening the Bitter Half," on page 385 of the April, 1978 issue of the A.P. First, Deltiology collecting; second Deltiology dealing; now philatelic writing . . . I may have to retire and let her take everything over!

Copy of letter to SCC Librarian S. H. Hanson from J. H. Richter last fall mentions ". . . probably the most important contribution . . . to the SCC library . . . color (slides) reproductions of many, if not most, unique covers and multiples of the skilling period of Norway's postal usage . . . taken of selected pages of (and supplied courtesy of—Ed.) Mr. Einar Lundstrom's magnificent gold-medal exhibition as shown at STOCKHOLMIA '74 and HAFNIA '76. Mr. Richter was allowed to copy the slides by Mr. Lundstrom, the originals being returned to Mr. Lundstrom, and we owe both these gentlemen our thanks for this beautiful contribution to our available knowledge and references.

LUREN, SCC Chapter 17 (Los Angeles) journal, continues its excellent content of real philatelic information in its February, 1978 issue with POSTAL STATIONERY OF FINLAND, by KAUKO I. ARO of Nutley, NJ. The second part of this excellent article appears in the March 1978 issue. DANISH AD LABELS—NEW DISCOVERY, by CHUCK NIELSEN highlights the front page of LUREN'S April, 1978 issue . . . and there's much more white meat on the bones of each issue. \$4/year (subscriber) or \$5/year (member-subscriber) or \$6/year (Foreign—mailed 4 times annually) and well worth it—check payable and sent to S. C. C. Chapter 17, Box 57397, Los Angeles, CA 90057 will bring LUREN to your hands.

A special article on goings-on at CAPEX '78 appears elsewhere in this issue of the POSTHORN and your editor joins in the chorus of voices urging all who can to attend and enjoy this last-chance-for-9-years opportunity to visit an "International" show in the Western Hemisphere!

Joe F. Frye

* S * C * C *

THE DWI SCENE

To those who will attend CAPEX, be sure to check the D.W.I. section of the exhibition. As of today, I know of four top-drawer D.W.I. exhibits that will be entered in competition. Their owners come from Maryland, New Jersey, Florida and Göteborg. Each of these exhibits have been allotted 8 frames, and if I know these collections, each could be different from the others, or they all could be along the same lines. The Danish West Indies is a small area physically, with very limited quantities of material, but of such wide scope that the areas a given exhibitor selects can be completely unlike any others. Each of the four exhibits at CAPEX are previous gold medal winners.

DELAWARE CHAPTER 13 SCC
TWELFTH ANNUAL AUCTION

General and Specialized Scandinavia

June 6, 1978

Chapter 13 has again assembled many unusual lots for its annual sale. All collectors of Scandinavia from beginners to specialists should find items of interest. Quality is unusually high and most lots are unreserved. Condition is conservatively described.

Usual auction rules prevail with lots sold to the highest bidder at a small advance over the second high bid, or to the earlier bidder in case of ties. All lots guaranteed genuine or as described. Gum can be assumed unless otherwise stated.

Abbreviations: VF—well centered, fresh; F—perfs clear of design; VG—sound stamp but perfs cut design; Cv—cover; NH—never hinged; LH—lightly hinged, no remnant; ★—unused, with gum, may be hinged; ○—used; E—est. NET value; o/w—otherwise; UL—upper left; LR—lower right, etc. Defects are described.

1978 Facit numbers are used, followed by the corresponding Scott numbers in (). Prices are Facit's, converted to \$ at 1 Sw.Kr.= \$0.22. Where other catalogs are used this is indicated in the description.

Send bids to R. D. Lipscomb, 300 Jackson Blvd., Deerhurst, Wilmington, DE 19803. The sale begins at 8:30 p.m. Successful mail bidders will be notified and lots mailed on receipt of payment, including postage charge. Lots may be sent directly, with bill enclosed, to buyers from our earlier sales. A Xerox copy of any lot will be sent on request accompanied by an addressed, stamped envelope.

Lot Facit# (Scott#) Facit (in \$)

DANISH WEST INDIES

1 ○	6e (6)	1874-1902 3c	bicolor, perf 14x13½, FVF	-----	11.00
2 ○	8d (8b)	same, 5c,	inv. frame, F	-----	12.10
3 ○	10 (10)	same, 10c,	centered target canc., F	-----	12.10
4 ○	16b (18)	same, 4c,	perf 12¾, F	-----	8.80
5 ○	17b (19)	same, 5c,	inv. frame, F	-----	22.00
6 ○	24b II (24a)	1902 opt. 2c	on 3c, "straight foot" var. sl. toned, F	-----	9.90
7 ○	27 (28)	same, 8c	on 10c, F	-----	7.25
8 ○	41-3, 45, 47-8	(43-5, 47, 49-50)	1907-8, Fr. VIII, VG-F	-----	16.70
9 ★	RMS 1	1875-80 Royal Packet Co.,	corner copy, crease o/w F	-----	60.50

DENMARK

10 ○	2A (2a)	1851, 4 RBS,	1st ptg., 4 margin copy, FVF	-----	27.50
11 ○	21 (17)	1871 bicolor,	3 sk., F	-----	38.50
12 ★	132 Iy, IIy,	95 I, 1918-21,	3 diff. vend. mach. prs., FVF	-----	24.20
13 ★	101 I, 110 I	(223b, 228a)	1933, 5ö, 10ö tete beche prs., FVF	-----	28.60
14 ○	103 I (224	var.)	1938, 5ö pair, "clubfoot var" on both, VF	-	5.28+
15 ○	RE 29, 5	1927-33,	2 diff.adv. pairs on piece, VF	-----	16.50

16	★	RE 63-4 1927-33, 2 diff. adv. se-ten., full panes, FVF	16.25
17	Cv	Four diff. Paquebot covers to USA, diff. lines (all 1953)	E20.00
18	○	Group of 14 diff. "star" type cancellations, all clear strikes	E10.00

(SCHLESWIG)

19	○	Tj2 (O2) 1920 Official, CIS opt., 5 Pf. green, FVF	60.50
20	○	Tj3 (O3) same, 7½ Pf. brown, VG-F	60.50
21	○	Tj4 (O4) same, 10 Pf. red, F	60.50
22	★	Tj5 (O5) same, 15 Pf. lilac, FVF	55.00
23	★	Tj6 (O6) same, 20 Pf. blue, LH, FVF	55.00
24	○	Tj7 (O7) same, 25 Pf. orange, FVF	82.50
25	★	Tj8 (O8) same, 35 Pf. brown, LH, FVF	60.50

FINLAND

26	○	4AKb (5) 1860, 10 K, Wiborg and mms. X canc., 1 perf short, F	19.80
27	○	29A, 30A (40, 41) 1889, 2 types of ships cancels, clear	E10-15.00
28	○	57 (72) 1901, ship cancellation, fine strike	E8-10.00
29	★	363 (279) 1948, stamp exhib. issue, NH, VF	12.10
30	★	461TB1 (341a) 1956 Finlandia exhib., tete beche pr., NH, VF	5.50
31	Cv	461 FDCI (341a) same on reg. FDC, sl. wrinkle not near stamps	6.50
32	★	Ö1-28 (N1-27, NB1) East Karelia 1941-3 complete, FVF	19.50
33	★	I 1-4, 8-11 (1-4, 8-11) 1920 North Ingermanland, short set, F	16.70

GREENLAND

34	★	1-9 (1-7, 5A, 6A) 1938-46, Chr. X issue cpl., LH, FVF	24.20
35	★	10-18 (8-16) 1945, complete set, LH, FVF	126.50
36	★	19-27 (17-25) 1945 overprints complete, LH or NH, FVF	198.00
37	★	22 I (20a) 1945, color error, opt. in red, LH, VF	198.00
38	★	23 I (21a) 1945, 15ö color error, opt. in blue, LH, VF	49.50
39	★	24 I (22a) 1945, 30ö color error, opt. in red, NH, VF	49.50
40	★	25 I (23a) 1945, 1 Kr. color error, opt. in blue, NH, VF	49.50
41	★	26 I (24a) 1945, 2 Kr. color error, opt. in blue, LH, VF	49.50
42	★	27 I (25a) 1945, 5 Kr. color error, opt. in red, LH, VF	49.50
43	Cv	43, 53-6 (B1, 48-9, 50-1) 1959, 1964, Two FDC, VF	14.30
44	★	P1 (Q1a) 1905, Pakke-Porto, p. 12¼, gum creases, VF for this	220.00
45	★	P2B (Q3a) same, p. 12¼, 5ö brn. sm nat. paper defect, still VF	220.00
46	★	P3B (Q4a) same, p. 12¼, 10ö blue, tiny thin at top, reperfed at top, very attractive copy of this scarce stamp	220.00
47	○	P4B (Q1) 1919, perf. 11¼, 1ö green with Type III canc., VF	24.20
48	○	P4D (Q1) 1927, perf 11¼, 1ö green, cent. Type IVa canc., VF	16.50
49	○	P5B (Q2) 1919, perf. 11¼, 2ö yellow, VF	41.80
50	○	P5C (Q2) 1925, perf 11¼, 2ö yellow, oval canc., sm. thin o/w F	41.80
51	○	P5C (Q2) similar copy but VF	41.80
52	○	P6A (Q3) 1918, 5ö brn., Type III canc, minor age spots back, VF	49.50
53	★	P6C (Q3) 1929, 5ö brn., LH, VF	39.60
54	○	P7D (Q4b) 1929, 10 grn-blue, oval canc., VF	24.00
55	○	P8B (Q5) 1923, 15ö violet, FVF	44.00
56	★	P8C (Q5) 1929, 15ö violet, VF	60.50
57	★○	P9D, E, F (Q6) 20ö red, three diff. ptgs., 2 are ★, VF	30.80
58	★	P10A (Q7a) 1930, 70ö violet, VF	49.50
59	★	P11 (Q8a) 1930, 1 Kr yellow, VF	22.00
60	★	P12 (Q9) 1930, 3 Kr brown, VF	38.50

61	★	P13 (Q4) 1937 Schultz ptg., perf. 10¾, 10ö blue, VF -----	13.20
62	○	P13-16 (Q4, 6a, 7, 8) 1937 Schultz ptg. cpl., type V canc., FVF	66.00
63	○	P17-18 (Q10-11) 1937, Andreasen ptg., cpl., type V canc., VF	33.00
64	○	P17 (Q10) 1937, Andreasen ptg., 70ö deep shade, ty. V canc., VF	16.50
65	★	T1-5 1935-6 Thule locals, no gum, o/w FVF -----	15.40

ICELAND

66	★	8e (15) 1876-1901, 3a yel., p. 14x13½, skip-perf (2-3) var, NG,F	13.20
67	○	9 (9) 1876, 5a blue, stained back, not vis. on face, 1 perf th, VG	187.00
68	★	10c (16) 1891, 5a green, p. 14x13½, no gum, FVF -----	19.80
69	○	13c (12) 1886, 16a brn., FVF -----	18.70
70	★	16 (14) 1876, 40a green, partial gum, 1 pulled perf., centered	41.80
71	○	16 (14) same used, fine copy -----	49.50
72	★	19 (20) 1892, 100a, lilac/brown, FVF -----	38.50
73	★	62 III (48a) 1902, 25a I GILDI, inv. opt., F -----	11.00
74	★	81 (76) 1907 Dbl. head 10a red, wmk crown, LH, F -----	37.40
75	○	95 (103) 1915 Dbl. head 6a gray, wmk. crosses, F -----	26.40
76	★○	98-101, 103 (130, 2, 4, 7, 142) 1921-9 opts., 98, 101 are ★, F -	23.65
77	★	114 (92) 1912, Fr. VIII, 5a pr., left stp short transfer, NH VF	26.40
78	○	124-44 (108-28) 1920-22 Chr. X issue cpl. used, FVF -----	46.20
79	○	122 II (140) 1925, 10 Kr. opt. on 50a red, TOLLUR canc., VF	0.90
80	★	151 (181) 1931-3, Chr. X reengr., 10a brown, FVF -----	33.00
81	★	188 (C3) 1930 airmail, 10a, marg. copy, faint corner crease --	15.40
82	★	188 (C3) same, hinge remnant, VF -----	15.40
83	★	204-9, 205y, 206y (C15-20+) 1934 airs cpl. incl. perf. vars., VF	41.69
84	○	224-6SS (B6) 1938 Ericsson souv. sheet scarce used, VF -----	1870
85	★	237-9 (209-11) 11938, 20th Anniv. issue, FVF -----	17.60
86	★	252-5 (213-6) 1939 World's Fair set cpl., LH, VF -----	44.00
87	★	255 (216) same, 2 Kr. val., NH, F -----	39.60
88	★	256-9 (232-5) 1940, World's Fair opts., cpl., LH, VF -----	99.00
89	★	321-5 (278-82) 1953 Old Manuscripts issue, LH or NH, VF --	15.40
90	★	327-9 (284-6) 1954 Hafstein issue, LH, VF -----	15.40
91	★	378 I (328 var) 1960 Europa, 5.50Kr., "spot in wheel" var. NH VF	9.90
92	○	Tj9 (O9) 1876-1900 Official, p. 14x13½, 50a lilac, FVF -----	30.80
93	★	Tj21bIII (O21b) 1902, I GILDI, 3a, inverted opt., VF -----	3.30
94	○	Tj53a (O50) 1922, 2 Kr. red, pjonusta with period, FVF ----	29.70
95	★	Tj59-67 (O53-61) 1930 Parliament, four defective, others VF	79.20
96	★	Tj62 I (O56) var) same, 10a var. "no dot over j," VF -----	17.60
97	○	Tj62 I (O56) same variety, used, VF -----	19.80
98	★	Tj74 (CO1) 1930, Offic. air, 1 faint perf. crease, o/w VF --	22.00

(ICELAND CANCELLATION LOTS, mostly Type B "provincial")

99	○	BAER, light, cpy. strike on Fac. 12d, skip-perf var. Fac. R4 E	20-30
100	○	BJARNARNES, almost complete strike on Fac. 12d, Fac. R3 E	15-25
101	○	DALASYSLA, almost complete strike on Fac. 134, Fac. R2 E	7-10
102	○	DYRAFJORDUR, compl strike (Type C) on Fac. 67, Fac. R2 E	10-15
103	○	EGILSTADIR, complete strike on Fac. 81, Fac. R3 -----	E 15-20
104	○	ESKIFJORDUR, light, almost cpl. strike on Fac. 12c, (R1) E	5-7
105	○	ESKIFJORDUR, almost complete strike on Fac. 26, (R1) E	5-7
106	○	GRENJADA(RST)ADUR, cpl. strike exc 3 let. on F135 (R3) E	15-25
107	○	HJARDARHOLT, complete strike on Fac. 13c, (R3) -----	E 20-25
108	○	ISAFJORDUR, complete centered strike on Fac. 81 (R1) E	5-7
109	○	STRANDASYSLA, cpl strike on Fac. 26, stamp defect (R3) E	10-15

110	○	SVEINSTADIR, almost cpl. strike on Fac. 12b, (R4) -----	E 30-40
111	○	VOPNAFJORDUR, cpl strike (Type C) on Fac. 15b (R2) E 20-25	
112	○	(BU)DIR, crown and posthorn (No. 14) on Fac. 25 -----	15.40
113	○	Numeral canc. 40, four cpl. strikes on strip of 7 of Fac. 76 7.60++	
114	★	DPC10 Double postcard, Type IV, stain on back -----	13.20
115	★	PC 12 Postcard, Type I, minor bends but still fine -----	19.80
116	★	Mint NH, 100 diff. between 1969-1977, VF lot -----	70.00+
117	Cv	Commercial covers, recent, large size, 34 stamps on 11 covers E ?	
118	○	Fee stamp, (Greidslu-Merki), 1935-41, 10a blue, Fac. Type K E ?	
119	Cv	Military post, APO810 clear hand canc. on cover to Buffalo, NY 22.00	
120	Cv	Military post, two APO860 covers, one hand canc. tying US C25, other machine canc on "Free" soldiers mail, somewhat worn	35.20
121	Cv	Military post, 1st Marine Brig. Prov. tying US 3c, to Nebr.	24.20

NORWAY

122	Cv	Stampless, Christiania to London via Hamburg, 1822. Hamburg SL marking on front + red mms "18". Circ. FPO MR-6-1822 on back -----	E 10-15
123	○	1 (1) 1855, 4sk blue, small even marg. all sides, light, centered Trondheim canc., F -----	88.00
124	Cv	18 (18) 1871, 3sk red tied w. Trondheim canc., to Alten, F --	16.50
125	62C	III (51a) 1893, 10ö red, perf. "error" 1, sl. toning, F -----	44.00
126	105, 138	(79, 119 (2)) 1927-9, three posthorn ship-cancellations - E	5-7
127	198-201	(B5-8) 1935 Nansen cpl., NH, VF -----	14.30
128	★	335B-340B (259-66vars) The "London stamps," overprinted "London 17/5/43" plus a serial number, cpl., scarce and FVF	605.00
129	★	RM1a 1876 Returned letter stamp, thins, some fading -----	154.00
130	○	7 Diff. stamps with "T" canc. (postage due) -----	E 15.00

SWEDEN

131	Cv	9 (8) 12ö blue tied MALMO on cover to Copenhagen, fine --	8.80
132	○	10 (10) 1858-61, 24ö orange, VF -----	14.30
133	Cv	21 (22) 1872, 12ö blue tied Goteborg to Linkoping, 1872 canc VF	6.60
134	○	46, 52, 4 (33, 56, 8) 3 diff types Danish "Fra Sverige" canc. E	10-15
135	○	54 (58) Cpl. "Fra Sverige M." strike on two stamps on piece E	7-10
136	★	61-4 (52-5) 1892 Bicolor, wmk crown, NH, VF -----	19.80
137	○	153-5 (194-6) 1921 Vasa issue cpl., FVF -----	14.30
138	★	181a (172) 1925, 20ö orange, A2 paper, LH, F -----	16.50
139	○	214-220 (216-22) 1924 UPU issue, part set, generally FVF --	127.60
140	★	240-45 (239-47) 1935, 500 Anniv. set, incl. A and C vars, VF	112.20
141	★	248A, AI (253+var) 1936, 15ö, pair, 1 "white hoof" var. NH VF	13.42
142	★	250 (255) 1936, 25ö blue, gum crease, o/w VF -----	15.40
143	★	251 (256) 1936, 30ö brown, Postal Anniv., VF -----	41.80
144	★	263-4 (270-1) 1938 New Sweden, 20ö, 30ö, VF -----	28.60
145	★	268 (277) 1938 Gustav V 80th B'day, 30ö blue, VF -----	19.80
146	○	Misc. 300 diff. used recent Scandinavia, almost all commem. E ?	

End of Sale—Thank You

Send bids in on any piece of paper. Be sure to list Lot Number and your bid and don't forget your name and address and, if SCC member, your number. Please print clearly or type. Prices realized will be sent to all bidders.

Finland - 1 Mark - 1866



Pictured are two Finnish 1 Mark stamps which have been offered in U.S. auction sales. These high value stamps are quite expensive and are rarely found in flawless condition. If you come upon a "flawless" copy, careful study should be made and the item should be authenticated by an expert. Many forgeries exist . . . some dangerous . . . and expert repairs are difficult to discern, though they were made decades ago.

Figure one: appears quite nice at first glance, (minus one roulette). However, the roulettes lack the usual symmetry. The cancellation is a forged WIBORG, so-called "high-box" type with an illegible date. All WIBORG "high-box" cancellers, with or without serifs were retired long before 1866, thus the usage on this stamp cannot be correct.

Regrettably I could not obtain the item for examination or for a photo for our SCC forgery project. There is little doubt however, that it is the product of Francois Fournier, who contrived these "total" forgeries and applied this bogus cancellation (among others).

The paper is usually rough in texture and the lay of ink uneven. Another point of identification (which can't be seen in the photo) is a small weak line starting from the last pearl on the right side of the crown above the emblem and leading downward.

Figure two: was erroneously and innocently described as Roulette II, possibly because it looks different than Roulette III. It is in fact a very poor forgery. Perforation II is quite visually identifiable. This perforating device was not used on the 1 Mark stamps until 1874 and was far too worn to cut smoothly. Thus the roulettes are irregular or missing entirely.

A flawless 1 Mark, Roulette II would have a minimum value (cancelled) of \$1,000.00. With one tooth or two half tips missing a nice stamp still would sell for about \$450.00.

Numerous other forgeries exist.

As a closing note, both auction houses withdrew the lots from sale when advised that the stamps were not authentic.

. . . Mike Hvidonov

Scandinavian Stamp Mart 1977 Activities

by Jed Richter

Our MART is alive and constantly setting new records under the leadership of Wade Berry, Mart Manager. The MART just completed its 10th year under SCC sponsorship. How many remember when Chapter 9 started the MART in 1965 under Vic Engstrom as Sales Manager? The last annual report to SCC members was published in the February, 1972, POSTHORN, so it's time to let the members know how the MART has grown since then. Here is the report for 1977:

Sales	\$43,234.69	
Less due members submitting the books	— 34,587.75	
Gross margin on sales		= \$8,646.94
Interest income		+ 1,208.26
		<hr/>
Gross income		= 9,855.20
Expenses:		
Mart Manager's expenses	\$ 4,323.47	
Postage and Registration Fees	+ 1,060.77	
Commissions to Chapters	+ 343.79	
Expendable Supplies, etc.	+ 339.54	
Total expense		= 6,067.57
		<hr/>
Addition to Insurance Fund		3,787.63
Recognized Insurance Losses		(23.57)
Insurance Fund Balance, January 1, 1977		4,763.36
		<hr/>
Insurance Fund Balance, December 31, 1977		\$8,527.42

As you can see, the MART has helped both buying and selling members. Sales covered the entire range of Scandinavian collecting, including Postal History, First Day Covers, Locals, mint, used, singles, blocks, minor varieties, booklets, Christmas seals, plate blocks, etc. Sales went from near \$1,000 for a single item down to pennies for good condition inexpensive items good for plating or postmarks. If you haven't used the MART recently, try it, you'll like it!

SWEDEN

and SCANDINAVIA

BUYING — SELLING — WANT LISTS

The Swedish Specialist

Jay Smith

P. O. Box 5485

Madison, WI 53705

Should SCC Become An Affiliate Of APS?

The American Philatelic Society, one of the largest philatelic organizations in the world, is familiar to many SCC members. In addition to individual memberships in APS there are chapter memberships for local or regional clubs and groups. However, there is another category for organizationals which are national in scope. These are known as either Units or Affiliates of APS. Over fifty such groups are affiliated with APS at present.

Some of these major philatelic societies and groups are:

- United Nations Philatelists
- Precancel Stamp Society
- American Society of Netherlands Philately
- International Society for Japanese Philately
- Germany Philatelic Society
- Postal History Society
- American First Day Cover Society
- Society of Australasian Specialists
- U. S. Philatelic Classics Society.

A number of advantages are available through APS affiliation, many of which are mentioned in Frank Sente's letter, below. A very important advantage is that APS is the U. S. representative to the FIP (Federation Internationale de Philatelie). Through this representation, the APS has a voice in the selection of judges at FIP-authorized international exhibitions. This could benefit SCC in achieving equitable representation on juries for such shows.

I would like to have comments, pro or con, sent to me at Box 17124, Philadelphia, PA 19105. If comments are received in time, we can bring them before the Board of Directors and the SCC Membership at CAPEX.

—Alan Warren, Vice President—SCC

AMERICAN PHILATELIC SOCIETY

January 19, 1978

Alan Warren
Vice President—SCC

Dear Mr. Warren:

We are extremely pleased to learn that the Scandinavian Collectors Club might be interested in affiliation with the American Philatelic Society. There are many advantages to affiliation, and by working together we can mutually help each other. Affiliates pay no annual dues and the APS exerts no control over their organization in any way, shape, or form.

To request affiliation, all you need to do is send a letter to this office making such a request under provisions of Article X of our Society Bylaws. Attach to your letter of request a copy of your bylaws, a list of your members as last published, indicating that at least 10 of them are APS members, and a copy of your principal publication. Your request will then be processed by this office and presented to our Board of Directors at their next meeting for approval.

Among the many services which we provide affiliates is publicity in our monthly journal. A regular feature in *The American Philatelist* is a column edited by Barbara deViolini entitled "Our Active Affiliates" which provides a form for affiliates to publicize information about their organization, its projects and accomplishments. We would also welcome articles of original research for publication in *The American Philatelist*, thus giving you wide exposure so that you can interest other collectors in your association. Upon request we will be happy to supply you with the names and addresses of every

new APS member who indicates an interest in Scandinavian philately so that you may extend to them a special invitation to join your society.

Each time we publish our Handbook of Services, the last one published with the November 1977 issue of *The American Philatelist*, we devote space to all affiliates allowing them to publicize information about their organization. Periodically we also list our affiliates with addresses for specific information in *The American Philatelist*. In exchange we require that each affiliate acknowledge its affiliation with the APS somewhere in the masthead of their publication, thus providing us with some publicity.

As an affiliate, the Scandinavian Collectors Club could make use of the tremendous resource holdings of the American Philatelic Research Library which is located on the ground floor of our headquarters. The APRL would also welcome material which your members would wish to deposit in it. Libraries of several APS affiliates have been transferred to the APRL for the mutual benefit of everyone. The library is separately incorporated as a public library and provides a professional library staff. New books are purchased to add to the collection and a photocopy service is available. Books are also loaned through the mail. The only thing we ask in return is help and guidance from your members as to what new books we should acquire to keep the collection up to date.

Quite frankly, we are interested in helping you in any possible way for in promoting the growth of specialized philatelic societies we are in effect, promoting the growth of philately in general to the benefit of all concerned. We believe that any major philatelic group would benefit from affiliation with the APS and we certainly appreciate your request for information about affiliation. If you have any further questions please let me know.

Sincerely,

Frank L. Sente, Dir. of Admin.

* S * C * C *

Jaakko Kempainen

1901 — 1978

February 19, 1978 marked the passing of one of Finland's great philatelists . . . a giant in research, dedication and above all a tireless collector.

His research and massive compilations still form the concrete basis for the color emission order of the 1875-1885 stamps as we know them today.

Along with being an authority on Finnish stamp forgeries, his research and listings of the permanent plate faults and errors of the 1875-1885 periods will remain the "bible" for students and specialists for all time.

His contributions to the writing of Suomen Postimerkkien Käsikirja (Finnish Stamp Manual) were invaluable.

Mr. Kempainen's exhibition of the Wasa issues earned a medal at NOR-DIA 1975 (Helsinki). His collection of Russian stamps and covers used in Finland is believed to contain more than 50% of such existing material.

Since 1973 he had worked diligently as a contributing editor for *Karhunkammas* (Stamp Club Magazine and Auction Offerings of PORI).

To culminate a brief article by Mr. Kempainen on his feelings about "plate faults" (Posthorn, Aug. '77) he wrote: "Philately is a field where new winds cannot blow away old knowledge and research."

I respectfully paraphrase this poetic quotation: "Nor will such winds ever blow away the great contributions of one . . . Jaakko Kempainen."

. . . Mike Hvidonov

Where Was "236" Three Ring Used In The 30's?

by Sigurdur H. Thorsteinsson, Iceland

We all know that the Danish three ring canceler number "236" was originally used in Reykjavik from 1870 to 1873. In this period we find it on Danish stamps; letters from Iceland to Denmark also with Danish stamps; and as a side canceler on letters with Icelandic stamps; and on a very few Icelandic skildinga and aurar stamps.

We also know that it was used again in the late twenties and thirties, and that it was used at a rather large station. We also know that it has been wrongly stated by Nørgaard and others, that it was used at Vatnsleysa. This was only based on guesswork, that since Vatnsleysa received the numeral "236" that it also received the three ring canceler by mistake. But this is an error. Three ring "236" was never used at Vatnsleysa.

The author of this article has seen 3 letters, where "236" three ring has been used, and there is no doubt that it was used in Skaftafellssýsla, and furthermore in the western Skaftafellssýsla. One of the letters has a printed name and address of the sender on the envelope: "Bjarni Runólfsson, Hólmi i Landroti, Vestur-Skaftafellssýsla." This farm Hólmur is in the Kirkjubaejarklaustur, which has a collecting office at Kirkjubaejarklaustur. The second letter is from Skaftárdalur, which had a collecting office at Flaga at the time the letter was sent. On the third letter there is no sender's address so it cannot be used as evidence.

Two of the letters have 2x10 aurar landscapes of 1929 and the third one has a 20 aurar red Gullfoss. With the amount of stamps known from the 30's with this cancel, it must have been used at a rather big office. Neither Flaga nor Vatnsleysa is, but Kirkjubaejarklaustur is such an office. One letter was certainly sent from there and another could easily have been taken there for quicker dispatch.

Furthermore, some skildinga stamps have been found to have this cancel with exactly the same type of ink as the other cancellations from the '30's. So these stamps could have been favor canceled at the station in question.

By this I am not stating that the canceler has been used at Kirkjubaejarklaustur. But the facts I have pointed out will place it there, in my mind, until something else is proven. I therefore ask anyone, who can prove differently, or support my theory, to help solve the matter by sending me a line about what you have to say in the case. A photostat of stamps and/or letters would be appreciated, and will be announced in The POSTHORN, so please send good ones.

The facts at hand are: 1) a letter from a farm, sent over Kirkjubaejarklaustur; 2) a letter from a farm within a decent distance, which would have benefitted in getting quicker to the recipient by being sent from Kirkjubaejarklaustur; 3) such a quantity of stamps with the cancel, that it must have been used at a rather large station, which Kirkjubaejarklaustur is; and 4) favor canceled skildinga stamps. Would they have been taken to a small remote station?

Then let us have any contrary facts and get the correct answer to this.

Sigurdur Thorsteinsson

* S * C * C *

EARLIEST USE OF THE TYPEWRITER

Philatelically speaking, and this is a pretty long stretch of the definition of philately, when was a typewriter first used in the Danish West Indies?

One can imagine a bank or a large business house first ordering a writing machine from Denmark or the United States, and the flurry of excitement among the secretarial staff when the machine finally arrived in St. Thomas. I would guess that the typewriter might first have been used to address mail until persons got the hang of the contraption. Was carbon paper immediately available? Anyway, looking through my collection, I find a cover postmarked 26 July 1913, addressed to London. That is a few months older than me, but surely some readers have older uses than 1913. A letter to the D.W.I. associate editor would be appreciated.

. . . V. E. Engstrom

* S * C * C *

DANISH REVENUE CATALOG AVAILABLE

GERALD M. ABRAMS, president of the American Revenue Assn., can furnish the illustrated four-page 1974 Danish Revenue Catalog by Kjeldskov for a 13c stamp for return postage (if to be mailed outside the USA enclose 31c postage) . . . or some Cinderella or revenue material. Those who may desire to send a \$1 donation to A.R.A. are welcome to do so but this is NOT mandatory. Mr. Abrams' address is: 3840 Lealma Ave., Claremont, CA 91711.

We appreciate this generous offer.

* S * C * C *

Iceland Notes

by Barbara LeBlanc, associate editor

Bryan Whipple has translated Max Nørgaard's classic article "Islandske Poststempler" into English and has published the translation in the *Iceland Philatelic Journal* in two parts. Further information may be obtained from him at P. O. Box K, Graton, CA 95444.

Wayne C. Sommer, Chairman of the S.C.C. committee to prepare a manuscript for a *Handbook of Icelandic Postal Markings*, reports: "Progress is slow but steady. We have several people in Iceland working with us to handle the archival material there. At present there is no firm date for completion. In fact we are still looking for material." Those who have manuscript or crown and posthorn cancellations should contact Wayne Sommer in case they may be able to contribute information. His address is 710 Roeder Road, 1206, Silver Spring, MD 20910.

Sugurdur H. Thorsteinsson, Kirkjuveg 8 (IS5-30) Hvammstangi, Iceland has asked us to mention his new prices for expertization. As of March 1, 1978 a certificate of opinion as to the genuinity of Icelandic stamps will cost £5 for members of the Icelandic Philatelic Foundation and £10 for others. Stamps cataloged at over 100,000 Icel. kr. according to the catalog *Icelandic Stamps* will be charged at 1½% of catalog for members and 2½% for others. Further information is available from Mr. Thorsteinsson.

MEMBER-TO-MEMBER

WANTED: Reliable source for paper, gum, booklet, etc., varieties of Finland's 1963-76 definitives (Bruksserie III). Arthur Steinberg (SCC 2078), 709 Beverley, Alexandria, VA 22303.

THIS SPOT is reserved for your member-to-member advertisement. The first 20 words cost you \$2.00 (that's the minimum) and it's 10c per word after that. Send your ad and your check to Business Manager Floyd A. Walker, Box 82, Grandview, MO 64030. Include your membership number in your ad, but don't count it as part of the total number of words.

Library News

by Stanley H. Hanson, SCC Librarian

Thanks to Ben Cohen, Ron Collin, Bob Frigstad, Wayne Sommer, S. H. Thorsteinsson, Harve Gudmundson and Carl Werenskiold for their library contributions to SCC Library. Have you any philatelic material that the Library can use? Write!

The Library Index is now in your hands. We do hope that you will make full use of the Index because this is the key to your SCC Library. So please use it to broaden your Scandinavian philatelic knowledge.

In each future issue of THE POSTHORN a full listing of new acquisitions that are placed in the SCC Library. It will be up to you to keep the Index current. So make those entries in the Index.

Suggestions of new philatelic acquisitions would be appreciated by your SCC Librarian. Only thru your help and counsel, we can make our Library one of the best specialty libraries internationally. Can we count on you?

Help, Help, please refer to February 1978, page 25 THE POSTHORN. Scandinavian Philately in the AP Congress Books. SCC Library starts with #29 year 1963. The SCC Library could use tear sheets, copies or the books prior to #29 Year 1963 on all the articles on Scandinavian philately. With your help we can complete this project.

* S * C * C *

Chapter News

Chapter 4—Chicago. Meetings are held at The Swedish Club of Chicago, 1258 North LaSalle St., dinner at 6:00 p.m., meeting begins at 7:00 p.m. on the fourth Thursday of each month, except November and December meetings are combined and held first Thursday of December.

1978 officers elected Feb. 23 meeting: President—Ronald B. Collin; Vice-President—Ben H. Cohen; Secretary-Treasurer—John Dasher; Regional Director—Wallace J. Gaarsoe.

Chapter 17—Southern California. 1978 officers elected: Donald Himer—President; Jerome V. V. Kasper—Vice-President; Michael Horn—Vice-President (San Diego area); Eric Roberts—Secretary; Paul Lukens—Treasurer; SCC Regional Director-elect is H. J. "Pete" Schlueter.

Appointments: LUREN Editor—Paul Nelson; Auction and Mart Book chairman—Eric Roberts; Librarian, James Jordan; Chapter Attorney—Marshall Gumbiner.

LUREN enjoys a continued increase in readership. (See Editor's Mailbag, this issue). Our chapter mailing address and that for LUREN is Box 57397, Los Angeles, CA 90057. . . . Paul A. Nelson

* S * C * C *

What Or Who is E T A?

An Answer

Rene Reboh (#2060) reports that five years ago he saw an old collection of Scandinavian stamps. In this collection, over 70% of all the stamps were marked with E T A, similar to the stamps of Iceland pictured in the February, 1978 POSTHORN. He showed us six used stamps of Sweden marked with E T A and one which was marked on the reverse side. We can then conclude that E T A was not limited to Icelandic stamps and is not a philatelic cancel. It was probably the initials of a collector who sought to identify his stamps. Unfortunately, they must now be considered damaged.

New York Auction of Finland

by Mike Hvidonov

On March 30 an auction of Finnish material was held at Sotheby Parke Bernet. The sale attracted world-wide interest with several agents placing bids for the foreign interests. Not too many items went to mail bidders—at least in that part of the auction that I attended and/or paid attention to.

The strength of the material was in the 1860-66 "big-toothed" stamps and 1875-1882, though there was something for everyone in the other periods too. Regrettably the material was a bit "thin" in the 1856 Oval stamps with very few 5 Kop. values and a smattering of 10 Kop. stamps.

The lotting descriptions suffered from inaccuracies. A few rarities turned out to be well known forgeries (however these were to be sent by the auction house for expertising.)

Color mis-descriptions appeared in the 1875 period, such as a 5 penny stamp on cover and a strip of 4, cancelled, of the 5 penny value.

One real gripe . . . some stamps described as "VERY FINE" and "EXTREMELY FINE" in capital letters were missing roulettes or had corner folds, etc. Descriptions such as these are regrettable.

Eight lots of the 1866-5p. Brown stamps printed on Laid lilac blue paper (1873-1875 emissions) were designated as Roulette III. These stamps exist in Roulette II ONLY. Perhaps Facit has this in error, that is why I use the Finnish catalogs. These stamps, however were very nice, so except for a bit of misguidance the buyers got good items.

Further, if any of our readers purchased lots 2072R, 2363, 2432, they should be expertised. In spite of these problems the auction was pleasant, exciting and also produced a very well-illustrated catalog. I would suggest that any collector who did not get a copy write and see if they are selling the ones that were still left.

For those collectors whose mates react with disfavor to stamp collecting perhaps the following comparisons between a Carl Pelander auction in 1958 and the very same items which appeared in the current sale would help make for some marital ease.

		Current Auction 1978	Pelander Auction 1958
#2126	1866 5p./6-block	\$2600.00	\$135.00
#2026	1856 10 k. Narrow laid	\$600.00	\$50.00
#2043	1856 Large pearl	\$475.00	\$46.00
#2153	1866/8p C. 3-row	\$350.00	\$45.00
#2400	1882 Blue 20p. TB	\$900.00	\$41.00
#2230	1866 Cover 1 Mark plus 5 penny	\$11,000.00	\$105.00
	Other fine items fetched:		
#2279	1866 1p. Carmine brown color error, used		\$5500.00
#2442	1885 20p. Yellow tete-beche, used		\$1600.00
#1875	1875 2p. pair with luxus EWOIS C		\$110.00

From the 1891 area, two lovely 3.50-Rouble corner sheet blocks of 4 sold for \$525 each and two 7-Rouble blocks with margins reached \$400 and \$350.00 respectively.

One word of caution: Always get an expert opinion, approval and a photographic certificate for items of value. Attests without photo substantiation are "for the birds." Last year I examined 6 so-called "mixed perforation" stamps—all of which were forgeries. This year so far, just one. Also false.

And, always buy flawless material. Condition must be prime. There are some very rare items and the Roulette IV stamps and some others on which flaws are ok . . . but not everyday material.

NEW MEMBERS

- 2102 BERNHARDT, Homer I., 6317 Waldron St., Pittsburgh, PA 15217
Sweden by F. H. Bloedow L-24
- 2103 BLOOD, John M., 380 High St., Holyoke, MA 01040
Full time dealer by F. H. Bloedow L-24
- 2104 BRUNT, Michael, 200 Foster Dr., Normal, IL 61761
Scandinavia, Canada, U.S. by F. H. Bloedow L-24
- 2105 FEDRO, Brian, 725 Probst Ave., Fairview, NJ 07022
U.S., U.N., Worldwide
- 2106 FREDERIKSEN, Ole, 11 Callunavej, DK-3450 Allerod, Denmark
DWI Specialized, Denmark to 1933 by E. H. Hansen #1610
- 2107 HOPKINS, Francis M., 3044 Woodwind Lane, Dallas, TX 75229
Denmark by F. H. Bloedow L-24
- 2108 HEBERT, Richard S., P. O. Box 603, Auburn, NY 13021
DWI, Scandinavia, World revenues by F. H. Bloedow L-24
- 2109 LITTLE, Albert P., Jr., 704 Salsbury Cir., Arlington, TX 76014
Denmark, Faroes, Greenland, Iceland, Sweden by F. H. Bloedow L-24
- 2110 LOTHMAN, Torbjorn, 154-09 35 Ave., Flushing, NY 11354
Sweden, U.S.
- 2111 MARSH, John B., 424 Sherin Dr., Oakville, Ont., L6L 4J5, Canada
Sweden by J. Smith #1824
- 2112 MILLER, Bud S., 55 W. 14th St., New York, NY 10011
Iceland by D. F. Halpern #1201
- 2113 RITCH, Robert, M.D., 17 E. 96 St. #10-C New York NY 10028
Scandinavia
- 2114 SCHMIDT, G. Donald, 80 Schuyler Dr., Commack, NY 11725
Sweden, Denmark, New Zealand
- 2115 SHIGAKI, Masafumi, Umegaoka 23-10, Midori-ku, Yokohama, 227, Japan
Sweden, Worldwide by Y. Osugi #1919
- 2116 SUOMALA, Mark R., Box 478, Amherst, NH 03031
by A. Silverstadt #1291
- 2117 ZASLOW, Stanley, 220 Kelbourne Ave., North Tarrytown, NY 10591
Scandinavia by A. Silverstadt #1291
- 2118 FORS, William R., 5215 N. Virginia Ave., Chicago, IL 60625
Sweden by SCC Chapter 4
- 2119 JOHNSON, Malcolm L., 106½ S. 3rd St., Grand Forks, ND 58201
Sweden, U.S., U.N. by R. A. Frigstad
- 2120 BARTLETT, Russell C., 5 St. Claire St., Braintree, MA 02184
Scandinavia by F. H. Bloedow L-24
- 2121 BROWN, Norman F., 35 Wynford Heights Cres., Apt. 306, Don Mills,
Ont., M3C 1K9, Canada — Finland, Netherlands, US, UN
by W. J. Banks #790
- 2122 CAVALLI, Vittorio F., 21206 133rd Ave., Maple Ridge, BC, V2X 4B4,
Canada — Sweden, Canada by F. H. Bloedow L-24
- 2123 GUMMESON, Per, Kungsgatan 55, S-111 22 Stockholm, Sweden
Finland, Dealer in Scandinavian Stamps by R. Gummesson #541
- 2124 HARADA, Hajime, 895 Koyato, Samukawa, Kohza-gun, Kanagawa-
pref., 253-01, Japan— Denmark, Norway, Sweden by F. H. Bloedow L-24
- 2125 SCHUBERT, Frank N., 3915 Oneida Place, Hyattsville, MD 20782
Scandinavia, Hungary by Michael Hvidonov #1286
- 2126 OLAMO, Juhani, Pihlajatie 2 A 8, 00270 Helsinki 27, Finland
Finland, Ecuador by M. Hvidonov #1286

REINSTATEMENTS

- 938 SORENSEN, Arnold, R. 6, Box 484, Newburgh, IN 47630
 337 PETERSON, Henry H., 529 Pinewoods Cir., Elmira, NY 14905

TRANSFERRED TO LIFE MEMBERSHIP

- 1103 L-29 THORSTEINSSON, Sigurdur H., Kirkjuveg 8, IS-530 Hvammstangi, Iceland
 2123 L-30 GUMMESSON, Per, Kungsgatan 55, S-111 22 Stockholm, Sweden

RESIGNED

- 1402 Edmond E. Miller, Jr., 1319 Bellevue Ave., Richmond, VA 23227
 1667 H. Summerfield Day, 1617 Northwestern Ave., Ames, IA 50010
 1791 Alton J. Blank, 1906 Aldersgate Dr., Cleveland, OH 44124
 2017 H. Leroy Wanamaker, P. O. Box 48, Stoneham, MA 02180
 325 Olof Moller, 4428 Elm Road, Gurnee, IL 60031
 675 Carl E. Westberg, 1960 Jackson St., San Francisco, CA 94109
 134 Theodore E. Stevenson, 989 Memorial Dr., Cambridge, MA 02138
 287 William E. Bullard, c/o E. L. McCawley, 210 NE Laurelhurst Pl., Portland, OR 97232
 1224 N. Matthew Nilssen, 484 Demarest Ave., Oradell, NJ 07649
 1238 Bernt W. von Glasenapp, R. R. #1, Edelstein, IL 61526
 1360 H. B. Greenland, 805 N. Main St., Bishop, CA 93514
 1587 Frank D. Bentzen, P. O. Box 3101, Visalia, CA 93277
 1663 Mrs. Frederick H. Norris, Greensboro, VT 05841
 1729 Stan J. Gasior, 4317 Ash Ave., Hammond, IN 46327
 1761 H. G. Vanderryn, 25 Beverly Rd., Great Neck, L.I., N.Y. 11021
 1906 Donald L. Omdahl, 825 5th Ave., S. Glasgow, MT 59230
 2002 John S. Ramirez, Box 9863, Kansas City, MO 64134
 1222 Alfred A. Hoff, R #2, Box W-34, Sunman, IN 47041

REMOVED FROM ROLLS

- 1680 David A. Faltin, P. O. Box 405, Inglewood, CA 90306
 1971 Jay Giles, P. O. Box 4536, Trenton, NJ 08611

DECEASED

- 1104 Paul E. R. Nordquist, 5805 16th St., Arlington, VA 22205
 H-2 Harry L. Lindquist, 153 Waverly Pl., New York, NY 10014
 2069 Elfyra E. Aslaksen, 2928 Florida, N.E., Albuquerque, NM 87110

ADDRESS CHANGES

- 1429 FLYMAN, P. O. Box 531, Surrey, B.C., V3T 5B7, Canada
 789 WAINES, R. T., 29229 Middletown Rd., Parkton, MD 21120
 897 HERSHBERGER, Milton J., 81 Main St., P. O. Box 35, Roebling, NJ 08554
 1040 GIERTSEN, Rolf N., 204 Mt. Circe Dr., Sumner, WA 98390
 1762 WYMAN, William N., 1916 N. Hulmac, Columbus, OH 43229
 1982 GUYER, John O., P. O. Box 536, Kent, WA 98031
 1119 LOCKEBERG, Rolf S., 1949 Ronald, Ottawa, Ont., K1H 5H7, Canada
 L-16 61 COHN, Ernst M., 203 N. Pontiac Ave., Dothan, AL 36303
 75 LANA, Waino W., 18 Mitchell Ave., Poughkeepsie, NY 12603
 633 ANDERSON, L. C., 1614 23rd St., Rockford, IL 61108
 911 ENGSTROM, Victor E., 1706 Gulf Shore Blvd., N., Naples, FL 33940
 1028 DAY, John R., 2000 Golden Rain Rd., #6, Walnut Creek, CA 94595
 1066 CRUMPTON, Bruce D., Rt. #7, Box 2050, Plant City, FL 33566
 1133 GREEN, Tore E., 575 Belair Ave., Merritt Island, FL 32952

- 1228 EGY, Harold A., P. O. Box 3861, Phoenix, AZ 85030
 1234 LAINE, Mauno W., 300 Woodette Dr., Apt. 605, Dunedin, LF 33528
 1417 OMBERG, Robert E., 4945 Blaser Circle, Boise, ID 83705
 1494 BLOSE, James F., 2704 Willow Road, Annapolis, MD 21403
 1624 BEALE, Jack, 381 Nature Trail Lane, Murryville, PA 15668
 1726 HANCHETT, Rodney L., 2716 Bagley Dr., Kokomo, IN 46901
 1768 McGEE, John F., 805 W. Oak, Independence, KS 67301
 1796 GIBSON, David V., P. O. Box 11913, Albuquerque, NM 87192
 1841 OWENS, Mrs. Mary Ann, P. O. Box 191, 418 W. Park Ave., Waukesha, WI 53187
 1888 PARR, Kenneth E., P. O. Box 3218, Huntsville, AL 35810
 1958 DAUBEK, LTC Joseph L., 563606180, HHC, 82nd Airborne Div., Fort Bragg, NC 28307
 1963 ROBERTS, Eric, 2763 N. Westfield P., Claremont, CA 91711
 2059 POTTER, Duaine K., FTGC, Fleet Composite Squadron VC-3, Naval Air Station, N. Isl., San Diego, CA 92135
 2060 REBOH, Rene, P. O. Box 610, Menlo Park, CA 94025
 2068 WERTH, Dorothy, 945 E. Kenilworth Ave., Apt. 129, Palatine, IL 60067
 652 LUNDBERG, NILS, Kapplandsgatan 72, S-414 78 Gothenburg, Sweden
 1120 GLASS, Powell, Jr., 1509 Clayton Ave., Lynchburg, VA 24503
 1226 WHITE, Miss Helen Serjeant, 2 Gibney St., Hawthorn 3122, Vic., Australia
 1439 OGG, Ronald Robert, P. O. Box 1468, Orinda, CA 94563
 1493 SASS, Allan, P. O. Box 48251, Los Angeles, CA 90048
 1809 ROSEN, Ronald Earl, 2223 Sweetpea Lane, Arlington, TX 76011
 1857 WHITE, Mary Ann, P. O. Box 16, Mamaroneck, NY 10543
 1881 HATCH, Robert D., 18745 Alhambra, Lathrup Village, MI 48076
 1950 DE NINO, Kevin, 11408 105th Ave., S.W., Apt. D-6, Tacoma, WA 98498
 2022 FULLOV, K. V., Poppelhusene 5, 2600 Glostrup, Denmark
 2030 LOSHAWN, Gunnar Martin, P. O. Box 7, N-4551 Farsund, Norway
 2074 FRAAS, Capt. G. Richard, 1432-A Galaxy Ave., Scott AFB, IL 62225
 541 GUMMESON, Rolf, Kungsgatan 55, S-111 22 Stockholm, Sweden
 1141 PIEPER, William R., 11731 Evergreen Circle, Coon Rapids, MN 55433
 1086 CULLEN, Arthur T., 2808 Foster Ridge Rd., NE, Atlanta, GA 30345
 1656 DAVIS, Jerry, 17710 Palora St., Encino, CA 91316
 1610 HANSEN, Erik Hvidberg, FOAT, P. O. Box 606, DK-2950 Vedbaek, Denmark
 1329 BENFIELD, William R., P. O. Box 15247, Seattle, WA 98115
 1523 SCHNEIDER, Karl J., 674 Sheridan, Loveland, CO 80537

SCANDINAVIAN INTERNATIONAL PHILATELY

Dealing exclusively in catalogues and philatelic literature (both new and second hand) relating to the Northern countries.

In 1978 we start with a regular review of philatelic articles, etc., published about this area. Specimen copy on demand.

We also look after subscriptions to philatelic magazines in Sweden, Norway, Denmark, Finland, and other countries.

P. O. Box 8042 — Rotterdam — Holland

SELL SCANDINAVIA IN SCANDINAVIA!

If you have choice Scandinavian material to sell, why not sell it where the top prices are paid? Our buyer and vendor list includes customers from 35 different countries. That's why we can sell all kinds of fine quality material at top prices.

Give us a try. We are now putting together material for our next auction.

Should you prefer to sell for cash, we naturally would welcome the opportunity to discuss your holdings with you.

And if you are not now on the list to receive our auction catalogs, write to us.

BENGT LILJA
Stamp Auctions Limited

Kalendegatan 16
211 35 Malmö SWEDEN

Member ASDA PTS APHW

The easy way to collect Swedish stamps

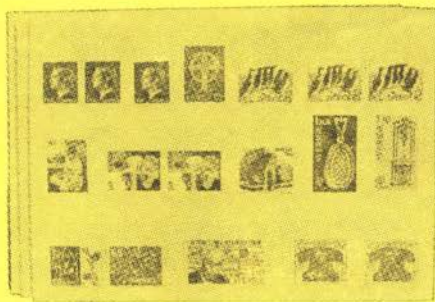
The Swedish Post Office, Stamps and Philatelic Service PFA,
pampers American philatelists with a varied service and information.



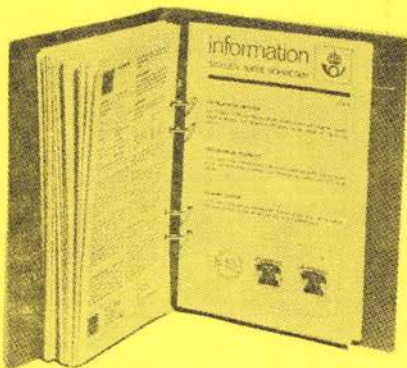
An annual catalogue of all stamps, sets and postal stationery available at the time of publishing at the PFA. Your order is executed at no additional postage or delivery cost.



A subscription is the easiest way to get all new issues or FDC without missing any single item. Order your free copy of the full colour trilingual subscription booklet.



A Year set in a neat package, containing all the stamps and variants issued during a year, is an attractive gift and a good start for your collection.



"Information Sweden" is a trilingual circular sheet, which informs about each new stamp issue. 15-20 sheet issues are published annually. Subscription is free. Binder for holding "Information Sweden" is \$2 postpaid.

To the Philatelic Marketing Representative of the Swedish Postal Administration in the United States and Canada
PHILLIP F. ROBBINS 147 W. 42nd St. New York, N.Y. 10036

Please send me your
 PFA Catalogue
 Sweden, subscription booklet
 Information Sweden

Name _____
Street _____
City _____
State _____ Zip _____



THINKING OF SELLING?

Collections come on the market for many reasons. Often a collector sells an area of lesser interest to finance new areas of collecting interests. Others are leaving the hobby entirely, and often collections come from executors of estates.

To those selling through our auctions, our terms to vendors are a commission of 10% of the gross realization. Consignments must total at least \$500. There are no lotting, photographing, or insurance charges.

The vendors who consign material for sale in our auctions are always guaranteed of thoroughly researched lotting, extensive advertising both here and abroad, and an outstanding catalog presented to a very strong, international clientele.

We also buy for cash and this year have purchased numerous individual rarities and large collections in the mid to high five figure dollar range.

How may we serve you?



DANAM STAMP COMPANY

Licensed & Bonded Auctioneers

IN THE U.S.A.

800 Kings Highway North
Cherry Hill, NJ 08034

(609) 779-0779

IN SWEDEN

Tony Bjellefors
Box 508

S-101 26 Stockholm
Tel.: 08/21 33 30 Kontor
08/11 57 65 Private