

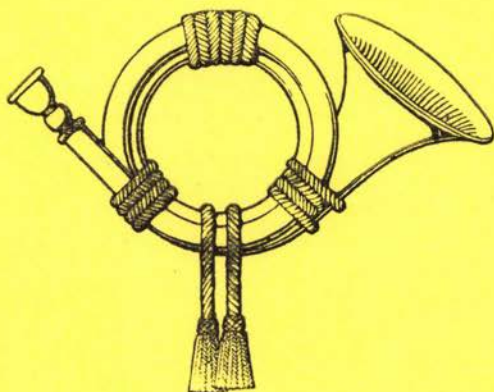
Vol. 38, No. 1, Whole No. 145, February, 1981

The  
POSTHORN

TM

(USPS 603680, ISSN 0551-6817)

"The Bank of Scandinavian Philatelic Knowledge"



OFFICIAL PUBLICATION OF THE SCANDINAVIAN COLLECTORS CLUB

Affiliate 79, American Philatelic Society; Br. 88469, Society of Philatelic Americans

## At **NORTHLAND** there's more

than our twice-a-year catalog featuring private treaty sales and mail auctions. In fact, the majority of our efforts are directed toward the day-to-day business of providing collectors with approval selections tailored to meet their needs and budget. Our stock is particularly strong in covers and stamps up to about 1940 with the accent on high quality specialized material. If you would like to receive selections throughout the year, please let us know your collecting interests and we'll do our best to help.

If you are not already an established customer, send \$1.00 to reserve a copy of our next sales catalog.

WE ARE CONSTANTLY SEEKING COLLECTIONS AND INDIVIDUAL RARITIES FOR OUTRIGHT PURCHASE OR CONSIGNMENT IN OUR AUCTION. WHAT DO YOU HAVE? WRITE OR CALL (201) 228-1742 FOR OUR IMMEDIATE REPLY.



**NORTHLAND CO.**  
BOX 34 • VERONA, N.J. 07044



APS

SPA

SCC



For collectors desiring to explore these issues further, we recommend the following: "Stamps of Denmark, Iceland and Norway," by Ernest H. Wise (1st Edition, 1975; Heinemann, London). This book devotes 18½ pages to these bicolored stamps. Another excellent book to consult is "The Postage Stamps of Denmark, 1851-1951," translated by R. King-Farlow, Copenhagen: Royal Post Office, 1951. The AFA Specialized Catalog is also an invaluable reference. This catalog lists and prices most of the varieties and printings, but there are many varieties unlisted.

The postal stationery is, or can be treated as, a separate issue from the postage stamps. This oval design was used on Postal Cards, both single and double, Correspondence Cards, and Wrappers. While this may not seem like very many different items, there is more than enough to form a very interesting exhibit on this single impression design.

Affiliate 79, A. P. S.

Branch 88469, S.P.A.

USPS #603680

**THE POSTHORN**

ISSN 0551-6817

**Official Publication of the  
SCANDINAVIAN COLLECTORS CLUB****Published Quarterly**

Vol. 38, No. 1, Whole No. 145, February, 1981

Copyright 1980 Scandinavian Collectors Club

Annual membership dues in the Scandinavian Collectors Club is \$6.00  
of which \$4.25 is for a subscription to The Posthorn.

Subscriptions to The Posthorn are \$9.00 a year to non-members, or \$2.00 a copy.  
(Subscriptions to The Posthorn include all supplementary publications.)

Orders should be addressed to the Secretary.

Office of Publication: 821 Vermont Street, Lawrence, Kansas 66044

Second Class postage paid at Lawrence, Kansas

Postmaster: Send form 3579 to 821 Vermont St., Lawrence, Kans. 66044

Changes of address should go to the secretary or if to the office of publication  
note on outside of envelope "Change of Address"

**Editor:**

Joe F. Frye, P. O. Box 22308, Memphis, Tenn. 38122

to whom all material and communications concerning The Posthorn, except  
address changes and advertising, should be sent.

(Associate editors and Officers listed on last page)

**TABLE OF CONTENTS**

Denmark Ovals — Hunewell .....	page 1
Denmark—A First Day Cover and a Puzzle — Hunewell .....	5
Kristiinankoupingin Palkkileima Postihistoriaa — Fraser .....	12
Spurious Messages on Iceland Postal Cards — Whipple .....	18
1980 Index — Werenskiöld .....	Center
Iceland 50 Mile Limit Christmas Seals .....	28



"Mourning Letter," Barrit CDS (1889), Backstamped 24.2.89.



4 øre Local Postal Card, with 4 øre postage stamp (with "Maltese cross" perforation), to make up the inland letter rate. Cds 22 Aug (1888). Backstamped 22 Aug.



2 Numeral Cancel examples. No. 181 is a "Kombinerede-Stempler"; about 40 different numbers employed a "KS" scheme. No. 212 was a Copenhagen office (Østerbro); 285 numbers exist, not all of them were in use during the bicolored oval era.



3 "Star" Cancel examples, 2 different types of "star" cancels.



AFA #17w, white spot in oval below "K" of Denmark

AFA #30, bent frame line on right, unlisted.

\* S \* C \* C \*

#### STaMpsHOW 81 PROSPECTUS AVAILABLE

Entry forms and prospectus for the philatelic competition are now available for STaMpsHOW 81, 95th annual convention of the American Philatelic Society, scheduled for Sept. 24-27, 1981, at the Marriott-Downtown, Atlanta, GA. Forms and prospectus for the Literature portion of the show will be available early in 1981. Send requests to: STaMpsHOW 81, APS, Box 800, State College, PA 16801.

## Denmark—A First Day Cover and A Puzzle

By Marvin Hunewell, Associate Editor

Figure 1 is a photo of the earliest first day cover in my collection of Danish FDCs. It utilizes the local rate 10 øre stamped envelope (S. Ringstrom No. 38, with Control No. 35-Z), and has 60 øre in supplementary postage, using the stamps issued December 1, 1924, commemorating the 300th Anniversary of Danish Postal Service. Is this a philatelic or accidental FDC? The postal rate was 40 øre at the time for UPU letters, and the registration fee was 30 øre. (The "Anbefalet" handstamp, in purple, means registered letter.) Thus, this cover contains no excessive postage. The use of 2 copies of Facit No. 203 also suggests that this was an accidental FDC.

Figure 2 is another stamped envelope acquired in the same collection of Danish Postal Stationery several years ago. This envelope (S. Ringstrom No. 35, 7 øre + 3 øre; with Control No. S-24) is supplemented with the 10 and 20 øre stamps issued October 5, 1920. It is date-stamped 7 Oct. 20 on the face, but is backstamped Oct. 6, 20. One of the date-stamps is wrong! Which one? This cover also has the correct postage to cover the letter (20 øre) and registration (20 øre) rates. The "Anbefalet" handstamp is again in purple. Both covers are addressed to the same individual, so the question arises whether or not both covers are of philatelic origin. This second cover also raises the question whether the Kjøbenhavn K cds was predated by 2 days and was mailed on 5 October; or, whether the London post office failed to change the date from 6 October for 2 or 3 days?

Anyone able to clarify the usage date of this second cover is invited to



Figure 1—FDC, c.d.s. 1.12.24.

write to me at: 6831 Ardale Drive, St. Louis, MO 63123. Also any member having Danish FDCs issued prior to 1936 is encouraged to share photographs of them with us. Either send clear photographs or your FDCs to me for photographing.



Figure 2—C.d.s. 7.10.20.



Backstamped 10 06 20

\* S \* C \* C \*

## Danish Bits and Pieces

By Marvin Hunewell, Associate Editor

**PERFINS**—The Perfins Club has published a Catalog of Danish Perfins by Peter H. S. Anderson and David C. Stump. Listing and illustrating over 950 perfins of Denmark, with illustrations on left-hand pages and identifica-



tion data on the right-hand pages (45 double pages in all). Looseleaf, 8½x11 inch pages, punched for standard three-ring binder, \$5.00 postpaid from: David C. Stump, 170 Steeplechase Road, Devon, PA 19333.

The November-December 1980 issue of *The Perfin Bulletin* listed a reserve bid of \$200.00 for a collection of more than 750 different Danish perfin patterns, plus 14 more patterns with 10 to 57 issues/stamps per pattern. Perfins may be "damaged stamps" to the purist, but they're definitely a viable alternative (or additional pursuit) to other aspects of philately.

The Perfins Club, APS Affiliate #57, has been around for about 34 years. Its official publication is *The Perfins Bulletin*, published 10 times a year. For more information send Dorothy Savage, 10550 Western Ave., Space 94, Stanton, CA 90680, a #10 SASE. Tell her that Marv Hunewell sent you.

**The Perfinist**—A relatively new (first issued March 1979) publication from Denmark. I received whole number 4 in December 1980. Danish and English text. Sample copy for three International Reply Coupons (or mint Danish postage stamps, face value at least 4 D.krs.) from: Den Gamle Kollektor, Peter Engelbrecht, Hindballevej 11, DK-6566, Asperup, Denmark. Next two issues, No. 5 and 6, four dollars, or equivalent in Danish Krona.)

While this column dealt only with Danish perfins this time, it is my intent to use this column as my "sound off" or "forum" for news concerning Danish philately today. You are encouraged to contact me when you find anything of interest to our readers. This column will only be as good as you help make it.

\* S \* C \* C \*

## Election Results

December 16, 1980

Mr. Alan Warren  
P. O. Box 17124  
Philadelphia, Penn. 19105  
Dear Alan,

After the December 11, 1980 meeting of the S. C. C. Election Committee, we hereby present the results of the election.

**President:**

432 Alan Warren  
1 Wallace Gaarsoe

**Vice-President:**

431 Jared Richter  
1 Dr. John Bruckner  
1 Robert Helm  
1 Stanley Hanson

**Secretary:**

431 Wayne Rindone  
2 Kauko Aro  
1 Joe Frye

**Treasurer:**

428 Donald Himer  
3 Ron Collin  
1 Alan Warren

**Directors-at-large:**

421 Joe Frye  
424 Stanley Hanson  
422 Wallace Gaarsoe  
3 Wayne Sommer  
2 George Koplowitz  
1 Ron Collin  
1 Ed Fraser  
1 Thomas Olson  
1 Jared Richter  
1 Donald Himer  
1 Pete Schlueter  
1 Eric Roberts  
1 Art Lind  
1 Paul Nelson  
1 Norman Andrews  
1 Willard Johnson

The elected officers and directors have all been notified of their election. The election committee members, Bob Frigstad, Ove Braskerud and myself certify that the total votes as listed are correct.

If we can be of any further assistance to yourself or other officers of the S. C. C. please feel free to call on us.

Sincerely, Willard S. Johnson

## Official Year Packs Of the Faroes

By Marvin Hunewell, Associate Editor

The first Faroe year pack has been counterfeited. Eric Wowern's GF10 Catalog, 1981 edition, lists the genuine pack at 1,200 D.krs. (roughly \$215). Who collects these packs, or how one keeps them post office fresh, we don't know, but it seems that quite a few other countries are issuing them.

An account in *Stamp Collector's* September 20, 1980, issue was the first news I had seen on these forgeries, so I wrote to Eric Wowern, the authority on Faroese philately, for more details.

According to Mr. Wowern, these phony packs are of Norwegian origin. Only a few hundred exist, so they are far more scarce than the original packs. Mr. Wowern investigated this matter for Postverk Føroya, the Faroes' postal service, when the phony packs first came to light. There are a number of minor differences between the forged Year Pack and the legitimate, but the most obvious difference is to be found in the "K" of POSTVERK." The forgeries have two little "horns," or "spurs," just above the junction-point of the letter "K." See illustration. The genuine packs do not have these "horns" or "spurs," but about 50% of the original do have two small red dots where the "horns," or "spurs," appear on the counterfeited packs.

We thank Mr. Wowern for the illustrations and data concerning the counterfeits. (In addition to preparing, printing and selling his GF series of catalogs, Mr. Wowern is also a dealer in the various stamps, covers, seals, etc. of the Faroes. His address is: Eric Wowern, Floradalen 31, 2830 Virum, Denmark.)

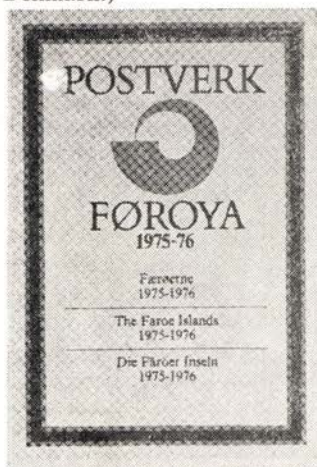
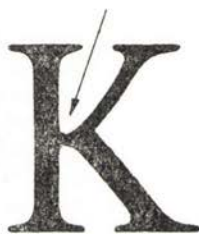
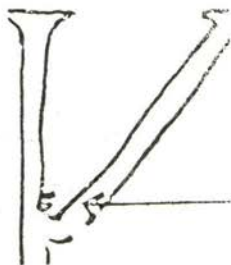


Photo of the 1975-76 Year Pack



Location  
to look



Greatly  
enlarged

\* S \* C \* C \*

## Scandinavian Literature Notes

By Alan Warren

The APS STAmPsHOW last September in Spokane, WA had a literature section sponsored by the Writers Unit. Our Editor Joe Frye served on the literature jury, and Mart Hanager Wade Beery won a silver award for editing the *Florida Philatelist*.

The September issue of *Frimerker* some Hobby from Norway continues to

grow in quality. The emphasis in this issue is on various reports on NORWEX held last June in Oslo. SCC member Sigurdur Thorsteinsson discusses the Christian X 20 øre brown (1922) bisect cancelled Hoffsos, of which only three copies are known. The first of a series of articles by Ørn Grahm on the history of the post in Finland begins in this issue, and SCC member Fred Brofos illustrates several covers to Norway via APO 544 in 1945.

In Issue No. 3 of the communication to members of the West German Forschungsgemeinschaft Nordische Staaten, Wolfgang Löhrich, Chairman of their Swedish Study Group, gives an extensive review of each day's events at NORWEX. He also records the gratitude of the many attendees at the special meeting arranged at NORWEX by SCC. He reports that 40,000 visitors attended the Oslo show. An extensive article by Danish Study Group Leader Werner Friedrichs discusses the Danish post prior to 1711.

FINDS No. 29, published by the Scandinavian Philatelic Club of Japan contains an article on the skilling banco issues of Sweden by Kazuhiko Hasegawa, and a continuation of the series on "Philatelic Travel in Scandinavia" by M. Shigaki. This issue as well as No. 30 carry a series by Toshi Saito on the astronomers depicted on Danish stamps, Tycho Brahe and Ole Rømer. Plate flaws of the 5 öre standing lion issue of Sweden are explored by Masafumi Shigaki, and another in a series on the Danish Bicolor Issues, by H. Harada, appears in the same issue.

In the September 22 issue of *Linn's*, John N. Cronk had a nice article on Sweden and its stamps. He gives a capsule history of the country, and emphasizes the quality of Sweden's stamps, and the importance of the Swedish Philatelic Agency as a source for current issues and first day covers. One of several interesting articles found in *Posthistorisk Tidsskrift* No. 3 for 1980 is that on Danish registration labels and their varieties, by U. Munch-Andersen.

A letter from E. Menne Larsen of Posthistorisk Forlag in Denmark advises of a number of ambitious publications he plans for 1981 including a revision to Vol. I of his *Danske Saerstempler*, a supplement to same covering all special postmarks of Denmark for the period 1977-80, and all special postmarks of the Faroes and Greenland since the beginning. Finally, he is also working hard on a catalog of the Danish "PR" postmarks. We look forward to these important additions to the Scandinavian literature.

The November issue of *Stamp Show News* carried an interesting article by Nils Farnstrom on the rarer issues of Sweden, primarily the skilling banco issues. However, he also gives interesting details on the 20/TRETIO error and the Gustaf V Varnamo stamps, among others.

Feature article in the September issue of *Scandinavian Contact* from England is an item by D. G. Crowley on communications in Finland, sparked by the recent Finnish stamps marking the 50th anniversaries of the Post and Telegraph Museum and radio broadcasting. The author goes on to present excellent reviews of postal history and radio and tv broadcasting in the country.

The October issue of *Nordisk Filatelistisk Tidsskrift* carries an article on the plating of the 1854 4 sk. of Denmark by P. Bloch-Poulsen, perforation varieties of the 1864 issue by Lasse Nielsen, and another 31-page installment of the monumental series on the 1921-22 provisionals, this one on the 8 øre overprints.

The August issue of *Het Noorderlicht*, published in Holland, contains a number of interesting articles including items on Norway's Bouvet Island overprints, and Icelandic mail to the other Scandinavian countries.

Issue No. 4 of *Postiljonen Rapport* carries reviews of the ZEAPEX 80 show in Auckland, and the ESPAMER 80 in Madrid. This issue also contains recent auction results of Scandinavian material.

## TIPEX—A Brief Glimpse

By Alan Warren

The date—May 9-17, 1936; the place—New York's Grand Central Palace; the event—The Third International Philatelic Exhibition in the United States. Conceivably, there are readers of this article who saw this show, or perhaps even took part in it. As for me, I unfortunately hadn't yet been born. However, recently browsing through a catalog of this major show brought forth some of the most important names in philately of the period, and pointed up a fair showing of Scandinavian material.

The show was sponsored by the Association of Stamp Exhibitions, Inc., whose President, Alfred F. Lichtenstein, was also President of the Exhibition as well as a member of the jury. Honorary Vice Presidents were Col. E. H. R. Green and John N. Luff. Other jury members included Dr. Carroll Chase, Theodore E. Steinway (of the piano firm), and Walter S. Scott. From Scandinavia were jury members Abraham Oldfjell of Norway and Nils Strandell of Sweden.

Among the famous collectors exhibiting at TIPEX were Philip H. Ward, Jr., with several entries including 19th century U. S.; Max G. Johl with 20th century U. S.; and Herman Herst, Jr. with "Straight Edge Corner Stamps" of the U. S. J. Murray Bartels showed his U. S. entires and cut squares; Alfred Lichtenstein had several entries, not for competition, including U. S. Pony Express and forerunners; Harry W. Holcombe with private proprietary, match and medicine stamps; Stephen G. Rich with several entries including Cape of Good Hope, and U. S. telegraph stamps; Clarence W. Brazer with essays, proofs and specimens; Carroll Chase with cancellations on the 3c 1851-57; and Harry M. Konwiser's pre-stamp covers of the Texas Republic.

John R. Boker, Jr. showed precancels; George B. Sloane had postal history; Hans Lagerloef with several British Empire exhibits; Phillip F. Robbins with Canada; Vincent Domanski, Jr. with Poland; Winthrop S. Boggs with Afghanistan and Tibet; and Ernest Kehr with Egypt. Kehr was also in charge of the Lecture Room for the educational programs given each day.

Airmails had twelve sections of their own including first flights, dirigibles and catapults. For those who may think topical collecting is a recently developed category, there were 22 thematic exhibits, including one frame on music furnished by Lauritz Melchior! The late Franklin R. Bruns, Jr. entered a collection of stamp exhibition seals and other philatelic memorabilia associated with stamp exhibitions. In the junior section we find a one frame entry on the Philippine Islands by the young Horace W. Harrison. And last but not least, in the "Philatelic Accessories" category, H. E. Harris showed "Crystal-Mounts."

The Scandinavian area entries are of particular interest. To begin with, Denmark, Finland, Norway, and Sweden were lumped together with Luxembourg, Serbia, and Russia. In this group we find three entries by Olaf J. Olson of St. Paul, MN on Danish blocks, singles, and cancellations, Norway No. 1 and skilling issues, and various Swedish items including paper varieties and shades of the 1855-58 issues. The well-known G. A. Hagemann of Sweden showed ten frames of the Danish bi-colors of 1870 to 1905. Additional Norway exhibits included O. N. Gierstein's seapost and railroad cancels; B. Goodfellow's specialized collection; M. H. Penfold's Norway showing reconstructed sheets and scarce cancellations; and Helen M. Harrison's general collection of Norway.

Finland exhibits were entered by E. Johanson, showing shades, perforation varieties and proofs; Roy Hill's general collection with perforation and watermark varieties; and Ida Kilcher's general Finland issues. Carol Hallberg of Sweden exhibited engraving varieties of the 1920-1936 coils of that country.

Under the grouping of European colonies, we find three entries of DWI by G. A. Hagemann: a ten-frame exhibit of "cents" currency up to 1903 including varieties and postmarks; a specialized collection of the "bit" currency varieties; and postal stationery. Four Iceland exhibits are also found in this grouping. Joseph Jaeger showed five frames of mint and used; Stephen G. Rich had perforation varieties and cancellations; Valdemar Weiergang entered six frames of Iceland, especially strong in the "prir" and "I Gildi" overprints; and A. W. Claflin had a mint collection of Iceland.

The Philatelic Literature section also had a number of entries of Scandinavian interest: Ake Lundberg's "Swedish Line-Engraved Issues 1920-1933," Herbert Munk's Vol. V of the "Kohl Handbook" which carries the chapter on Iceland, and two items by G. A. Hagemann—"The Stamps of the Danish West Indies" and "Die Zweifarbigen Briefmarken Danemarks und Danisch Westindien."

Many other famous names appear throughout the 250-page catalog of TIPEX, as well as the names of dealers, some of whom are still in the business today. Browsing through such catalogs brings back memories for the old-timers, and brings forth images of legendary philatelic fame for the youngsters.

## SCANDINAVIA

JAY SMITH & ASSOCIATES

P. O. Box 9630

MADISON, WI 53715

Phone 608-258-9630

BUYING • SELLING

APPROVALS FROM WANT LISTS

*Scandinavia Is Our Specialty*

## SCANDINAVIA

Postal auctions for collectors and investors, Denmark, Finland, Norway and Sweden. Auctions held every 2-3 months. Send for regular catalogues free.

We also buy for cash: Classical quality items. Mainly from Scandinavia.

### Scania-Frimarken

P. O. Box 13029 — S-200 44 Malmö

Telephone: Sweden 040-975990

Members of OFF

## Kristiinankoupingin Palkkileima Postihistoriaa (THE CHRISTINAESTAD LINE CANCEL)

### An Addendum

By Ed Fraser #954

In the February 1978 POSTHORN, pages 10 thru 13, M. Hvidonov translated an article written by Mikko Ossa in the June 1971 "Åbophil" magazine. The article was about the Christinaestad "X" or "line" figure cancel. (Footnote 1.) Perhaps because this cancel has the distinction of preceding the start of the extensive use of other figure cancels by roughly twenty years, it has frequently been written about. To update some of the information in the 1978 article, the following has come to my attention:

1. The article states that the cancel was used at least up to 1865, and apparently again after 1875, and that although it should exist, it is not known on the 1866 type serpentine roulette (5 penni thru 1 mark) issues. However, the stamp in Figure 1 is a 40 penni that bears a Christinaestad "X" cancel. Recently, a dealer in Finland also had two more 40 penni values. These had simply a vertical line, similar to the vertical stroke cancels in Figures 1, 2, and 3 of the February 1978 POSTHORN article. This seems to establish the use of this cancel during the post-1866 serpentine roulette era.



Figure 1 — A 40 penni serpentine roulette on ribbed paper (1873-1874) with the Christinaestad "X" cancel.

2. Figure 2 shows an item where there are three "lines" of cancellation on the stamp. (Perhaps there was an additional nearby stamp on the original cover that was also "X"ed, and its cancel overlapped onto this stamp.)

3. For the readers' future reference, Figure 3 is given to show the "X" on an 1856 issue. This can be compared with Figure 1, page 10, of the February 1978 POSTHORN article, which shows a single vertical mark, not pre-canceled, and the town box cancel, on cover.

**Forgery Note:** Obviously forgery would seem a great risk to the collector. About 25 years ago it was realized here in New York that a number of mute cancels and ship cancels on the market were forged. My greatest concern is where the stamp is damaged and would otherwise be of little collectable value, or where there is already a genuine town cancel and the additional

cancel may have been added to enhance the appearance of the item. Where a mute cancel exists alone, and the stamp is far more valuable unused, as with the first issues, logically then the stamp should be checked mainly for having been cleaned—i.e.—having had a previous cancel removed. Figure 4 is very unusual. It is a dangrous mute cancel forgery on a poor forgery of the first issue.



Figure 2—10 kop. serpentine roulette with a "double" Christinaestad "X" cancel



Figure 3—10 kop. tied on a small piece, showing the "X" format. (Note that both lines also extend onto the piece, showing the stamp was not precanceled.)



Figure 4—A dangerous mute cancel on a poor forgery of the first issue. Note that except for the Christinaestad "lines," mute cancels did not come into use until long after the end of validity of this issue in 1860.

#### Footnotes:

1. "Figure cancels" are also called pattern cancels, fancy cancels, mute cancels, and cork cancels. "Cork" may be the most recognized description, but it is not very accurate. Actually, many were formerly made of metal and very few, if any, might have been made with "cork." The Christinaestad cancel is assumed to have been metal.

\* \* \*

I would be most interested in hearing about other uses on and off cover of this Christinaestad cancel. Ed Fraser, 60 Broad Street, 26th Floor, New York, N. Y. 10004.

## SCANDINAVIA Large Stock — Moderate Prices

Strong in 19th Century, including the better items; Covers, Postal Stationery, Cancels, Errors, Proofs, Varieties, etc. Please call for an appointment before coming.

### HENRIK POLLAK

55 West 42nd Street

New York, N. Y. 10036

Phone (212) OX-5-1348

APS

SPA

SCC

ASDA



## Library Index

SUPPLEMENT #11 — February 1981

### Denmark

- D-131-E Denmark Perfins. Anderson and Hansen. 1980. English. Lists and illustrates all Danish Perfins. Excellent arrangement and identification. 8½x11". 114 pp.
- D-132-D Ovalmatricetyper pa 4 Skilling Tofarvet. L. Nielsen. 1975. Danish. Study on the 4 skilling Bi-Color. Lists and illustrates the 12 Types of this issue. 7x10". 6 pp. from *Nordisk Fil. Tids.*
- D-133-D Danske essays og prøvetype 1849-1902. J. Schmidt-Andersen and R. King-Farlow. 1950. Danish. Well written study and excellent illustrations of essays and proofs of this period. 7x10". 17 pp.
- D-134-D Post og Telegraf Handbogen. 1963. Danish. Issued by the Danish Postal Dept. A goldmine of information on places, rates and other facts on the Postal System. 6x8". 202 pp.
- N-141-D See N-141-D on British FPO in Denmark.

### Faroes and Greenland

- N-141-D See N-141-D on British FPO in the Faroe Island.

### Iceland

- N-141-D See N-141-D on British FPO in Iceland.

### Norway

- N-133-N-E Bulletin 6 Billedkavalkade 1980. Norwegian, English. The final photographic report of NORWEX 80. Illustrated, 6x8½". 36 pp.
- N-134-E Norway Regular Vending Machine Booklets. J. Caffrey SCC. 1980. English. Excellent article on these stamp booklets. Lists all stamp booklets issued. 2 tables. Illustrated. 8½x11". 4 pp. From *Linn's.*
- N-135-E The 5 Øre Plate 3, Norway 36a, A New Type. O. N. Giertsen. 1936. English. Article on this new type. Illustrated. 8½x11". 1 pp. From **Stamps.**
- N-136-E A Norwegian Rarity. O. N. Giertsen. 1936. English. Article on 1883-93, 10 Øre 20 mm, Plate 3, Type 3. Illustrated. 8½x11". 1 pp. From **Stamps.**
- N-137-G Norwegian Schiffsposten und ihre Entwertungen. F. Bieseckl. 1962. German. A series of articles on Norway's coastal ships carrying mail. Many tables. Illustrated. 8½x11". 34 pp. From *Der Samler-Dienst.*
- N-138-N Marinens Posttjeneste 1940-45, and Norsk Eksilpost 1940-45, Handelsflaten, by K. Sanne, 1974. Norwegian. A series of articles on Norway's Maritime fleet during WW2. Lists all ships with their cancels and numbers. Well documented and illustrated. 8½x11". 15 pp. From *Norsk Fil. Tids.*
- N-139-E Norway—1886-93, 20 mm Small Die Issues. Photocopies of Exhibition Pages. Assembled by Harry Snarvold, Sweden. This medal-winning exhibit covers all varieties and examples of various usage on covers of this issue. Excellent arrangement of the material. 8½x11". 46 pp.
- N-140-E Norway—Cancellations, 1854-1900. Photocopies of Exhibition Pages. Assembled by O. N. Giertsen, USA. This exhibit received a Gold at

- Interpex. Well arranged. With cancels of all the types and usage for the period.  $8\frac{1}{2} \times 11"$ . 24 pp.
- N-141-D Britiske Feltposten tover i Skandinavien 1940-50. R. King-Farlow. 1952. Danish. Lists all British FPO in Norway, Denmark, Faroe Islands and Iceland. Gives the numbers and dates of usage of each FPO. Illustrated.  $7 \times 10"$ . 3 pp. From *Nordisk Fil. Tids.*
- N-142-G Aus dem grössen Ganzachen Katalog 1928. Norwegian. Dr. P. Crodel. 1928. Catalogs all issues of Postal Stationery from 1872-1922. Illustrated.  $8\frac{1}{2} \times 11"$ . 7 pp.
- N-143-N De Norke poststempler før Frimerketiden "Prefilateli Katalogen." T. Ahlstrom and F. C. Moldenhauer, Jr. Jan. 1, 1845-Dec. 31, 1854. 1963. Norwegian. Lists and catalogs all of Norway's pre-adhesive cancels as listed above. Gives rarity factors. Illustrated.  $7\frac{1}{2} \times 10\frac{1}{2}"$ . 58 pp. From *Norsk Fil. Tids.*
- N-144-N Plateknikken for de eldre Norske frimerkiboktryke. C. A. Weren-skiold, SCC. 1961. Norwegian. Technical details as to printing processes of the various issues. Excellent treatment. Illustrated.  $7 \times 10\frac{1}{2}"$ . 12 pp. From *Norsk Fil. Tids.*
- N-145-N Norges Byposter og annen Norsk localpost. C. Pihl. 1963. Norwegian. Lists and catalogs all By-Post and local stamps issued by Norwegian towns. Illustrated.  $7 \times 10\frac{1}{2}"$ . 88 pp. From *Norsk Fil. Tids.*
- N-146-N De Nye 22 mm Stemplene. 1963. Lists all 22 mm. cancels used by Norwegian post offices. Illustrated.  $7 \times 10\frac{1}{2}"$ . 6 pp.
- N-147-N Konstante Platefeil pa Portomerk. J. Jensen. 1962. Norwegian. Lists, catalogs plate flaws on Norway's early postage dues. Illustrated.  $7 \times 10\frac{1}{2}"$ . 16 pp. From *Norsk Fil. Tids.*
- N-148-N Litt om 10 Øre 1898-1908, Norgeskatalogen Nr. 77 II. L. Saetten. 1960. Norwegian. Lists and catalogs varieties on this stamp. Study includes  $1\frac{1}{2}$ -times illustrations.  $7 \times 10\frac{1}{2}"$ . 4 pp. From *Norsk Fil. Tids.*
- N-149-N Utgaven 1877-1878 Ore Merke Med Skravert Posthorn. A. Berntsen. 1962. Norwegian. Excellent study on this issue of the shaded Posthorn. Illustrates the many plates and types.  $7 \times 10\frac{1}{2}"$ . 12 pp.

### Sweden

- S-106-S SFF Specialkatalog 1980-81. Swedish.
- S-107-E Den Svenska FN bataljonen i Libanon och dess postala forbindelser. N. Mellander. 1978. Swedish. English translation by W. Rindone, SCC of the original article. The Swedish UN Battalion in Lebanon and its postal communications. Much detail on Postal History, well illustrated.  $8\frac{1}{2} \times 11"$ . 11 pp. From *Nordisk Fil. Tids.*
- S-108-E How can one differentiate between booklet covers printed by offset and by letterpress? Y. Hamnerius. 1977. English. Translated by W. Rindone, SCC. Gives full details on these booklets. Excellent tables.  $8\frac{1}{2} \times 11"$ . 7 pp. From SFT.
- S-109-S-E Faltpost Kontoret vid Svenska FN Bataljonen i Mellerstå Ostern. N. Mellander. 1976. Swedish. English translation by W. Rindone, SCC. The field post office for the Swedish UN Battalion in the Middle East. Many tables, good illustrations postal history.  $8\frac{1}{2} \times 11"$ . 13 pp. From SFT.
- S-110-E The Rare Stamps of Sweden. N. Farnstrom. 1980. English. All about the 6 rare stamps of Sweden. Good background and illustration.  $8\frac{1}{2} \times 11"$ . 2 pp. From *Stamp Show News.*

## Library News

By Stanley H. Hanson, SCC Librarian

Thanks to: Ron Collin, Ernst Cohn, Rolf Giertsen, Harve Gudmundson, Jed Richter, Wayne Rindone, Phil Robbins, and Harry Snarvold for their contributions of material to our Library.

You can borrow library material from the SCC Library. Here are the rules: Members name and SCC membership number. Check for \$4.00 payable to SCC Librarian for return insured postage (excess postage will be refunded); list of library material wanted. Material must be returned within 21 days, by insured parcel post.

We wish to thank the membership and officers for their help during 1980 in making the SCC Library one of the better specialty libraries. May we count on you in 1981? Any suggestions will be helpful.

\* S \* C \* C \*

## Lion-Type 25 Mark Stamp With Watermark Swastika— A Rarity?

By M. E. Hvidonov

The December issue of *Abophil* poses the possibility that the 25 Mark Saarinen, Lion-type, red and yellow stamp with a Swastika watermark properly used on a postal piece (NORMA:136B) may very well be a modern day rarity. The stamp bearing Watermark Swastikas in both positions I and II was issued on May 1, 1927. Position I, with the Swastika emblem facing to the left, is rarer than position II, which faces to the right. (Watermark positions are viewed by observing the WM from the back, gum side, and not from the front or printed side.)

WM position I, cancelled, is rated at 2000 F. marks by NORMA and about 1000 marks in an unused state. WM II, cancelled, sells for 800 marks while the unused counterpart is modestly priced at about 60 marks. There are no quotations on these items properly used on postal pieces.

It appears that this item of a relatively modern period of Finnish philately is one of the more difficult pieces to find.

This fascinating feature was part of a discussion prepared and presented by Mr. Erkki Larkaa at a recent Turku Stamp Club meeting concerning the Saarinen Lion-type emissions and some of the elusive items.

Mr. Larkaa stated that he had found only one 25 mark stamp with a partial Swastika WM on a postal piece. It was "partial" because the stamp was torn and a portion was missing.

The speaker noted that the same 25 mark value with a Posthorn WM (NORMA:146B) on card or letter is not a common item. Some years back there were some unwatermarked Lion-type 25 mark stamps, (NORMA:117A) that were "around" usually on insured mail. None of these have been seen for some time, according to the well-informed speaker.

\* S \* C \* C \*

Share your knowledge — submit an article or short item.

## Spurious Messages On Iceland Postal Cards

By Bryan Whipple, SCC 1354

The Facit and other catalogs show used postal cards of Iceland at prices consistently much higher than unused cards, often five, ten or more times as much. Marketplace availability and auction realizations bear out the general accuracy of this pricing distinction, too. Thus, it is not unusual to find favor (CTO) cancellations on Iceland postal cards and stationery, just as one finds CTO skilling stamps and other early issues.

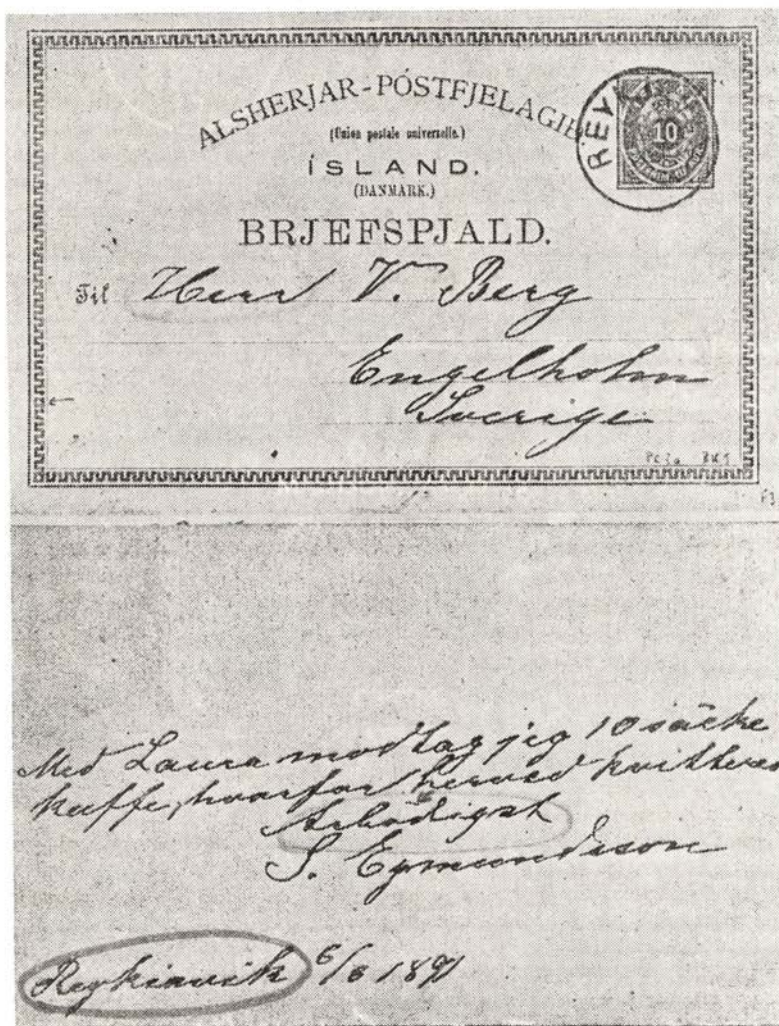
Since the catalogs do not mention CTO cards, there is no clear indication of what their value might be, vis-a-vis the same card either mint or genuinely used "through the mails." To further muddy the waters, purists recognize a hierarchy of "genuineness" of use. For example, there are many "I GILDI" postcards which were used on their last day of postal validity, December 31,



1902 as "thank you for your business during the year" greetings by Thomsen's Department Store (Thomsen's Magasin). Thomsen was a known philatelic opportunist who was connected with the production and exploitation of the I GILDI issue. Thus, such printed and obviously philatelic cards are of less interest and value than routine but non-philatelic meeting notice cards, which are in turn less prized than postal cards with individually handwritten cards from and to individuals not associated with philatelic exploits.

Nevertheless, many CTO Iceland postal cards do exist, and as a rule would be worth much closer to an unused card than to even a rather philatelic card's value.

Recently Barbara LeBlanc showed me xerocopies of two cards she had obtained from abroad, which she felt showed distressing symptoms. Both cards are postmarked the same day, and although one is addressed to Denmark and one to Sweden, neither has a transit or arrival mark of any kind—rather un-



usual for 1891. Most striking is that despite bearing different signatures, the handwriting on the two cards is the same! Barbara had suspected this, and based on a limited experience with amateur graphology I was able to confirm that the two cards were indeed written by the same hand.

The messages, presumably entirely fanciful, purport to be simple notifications or receipts regarding shipments on the "Laura," and are probably sufficiently credible to fool collectors in continental Europe or elsewhere away from Iceland itself. The falsified messages do not obviously reveal themselves to me as products of a particular era, although I suspect they were added to the cards rather a long time ago, possibly even while the cards could still have been given bona fide postal usage (about 1902).

The postage of 8 aur. "to Denmark" and 10 aur. "to Sweden" is correct for the purported "uses." The spelling "Reykjavik" was in use, too, so this is not an error of the falsifier (see, for example, the cover illustrated facing p. 34 of "One Hundred Years of Icelandic Stamps").

To confirm the probability of our conclusion that a message had been after-applied to an already cancelled-to-order card in these cases, I checked my own collection. I found one "used" card with message that is suspicious, but in another handwriting, so of no probative value here. I also found five CTO cards without messages, four dated 8/2, but one dated 6/6, just like our two specimens here. This I take as final and conclusive proof that there was a batch of postal cards cancelled-to-order 6/6, and that some of these were later "decorated" with messages to enhance their value.

---



---



---



---

## UNRESERVED AUCTIONS

**Sale 87 — SWEDEN, NORWAY, GREENLAND, U. S., U. N., Australia, Hong Kong, Germany, Netherlands and other countries' stamps—catalog now available, sale date March 16th.**

**Sale 88 — DENMARK, ICELAND, FINLAND, and Postal History featured—U. S. and other countries' wholesale and remainder lots included. Catalog available early March; sale date April 13.**

**Sale D-11 — Picture Postcards of the World, catalog available in March.**

**FREE CATALOG to SCC members' requests. STATE INTERESTS.**

**Midland Stamp Co., Box 22308, Memphis, TN 38122—USA  
PTS-ASDA-APS-SCC, etc.**

**(See our full-page ad elsewhere in this issue of the POSTHORN)**

---



---



---



---

---

Steady increase in demand for our services made necessary the following divisions of our activities:

**PHILATELIC DIVISION —**

Public and mail auctions; wholesale private treaty service; appraisals; outright purchase of worldwide philatelic materials.

**RETAIL DIVISION —**

Bourse and mail-order service to collectors. U. S. primarily, with other countries' material added as quickly as time permits. Address, for retail division only, is: Orion Miller, 4862 Southern Ave., Memphis, TN 38111. Office visits by appointment (901) 683-5903, 4 to 8 p.m. daily.

**DELTIOLOGY DIVISION —**

Picture Postcards of the world by mail auction and private treaty; outright purchases of cards; appraisals. (Cards offered thru Retail division at show Bourses but not by mail order.)

**PUBLICATIONS DIVISION —**

Typesetting, printing, mailing of philatelic publications of all types.

Our office and mail addresses, except for the Retail Division (see above), are:

(Philatelic and Publications Divisions)

Midland Stamp Co., P. O. Box 22308, Memphis, TN 38122

(901) 452-8701 10 a.m.—10 p.m. daily

(Deltiology Division)

Midland Stamp Co., Box 11529, Memphis, TN 39111

(901) 458-3911 10 a.m.—10 p.m. daily

Joe F. and Marian N. Frye, owners.

Members— PTS, ASDA, SCC, APS, and many others. Established 1964.

(See our schedule of coming sales elsewhere in this issue)

---



---



---

## SCC Membership Passes 1,000

1980 saw SCC pass the 1,000-member milestone. This growth is attributed to several reasons, including classified ads in two of the philatelic weeklies, the pulling power of Publicity Manager Marvin Hunewell's releases which always suggest contacting our Secretary for membership details, and to a major program over the past two years to approach those new APS and SPA member applicants who expressed collecting interests in the Scandinavian areas. This task was largely the work of Kauko Aro.

Our members can be found in 46 of the states including Alaska and Hawaii, and one resides in Puerto Rico. Several have APO addresses. Members also reside in the major Scandinavian countries including Denmark, Iceland, Norway, Sweden, and Finland. Canada and England both have many SCC members, and others are scattered over the globe in Japan, Germany, Holland, Belgium, Mexico, Luxembourg, Czechoslovakia, Australia and New Zealand.

As might be expected, the two states with the largest membership are New York and California. They may well be competing, but as of June 1980, the California contingent was leading by a scant half-dozen members. While 1,000 members is a remarkable achievement, we look forward to increasing our ranks even more in the coming years.

—Alan Warren

• S • C • C •

### CHICAGO CHAPTER TO HOST 1981 SCC REGIONAL AT COMPLEX 81

SCC Chicago Chapter will host the 1981 Regional Meeting, Saturday, May 2, 1981, at COMPLEX 81. The show location, "The Expocenter," 350 N. Orleans St., opposite the Merchandise Mart, Chicago, Ill. 9000-page exhibit and 86-dealer bourse, various club stands, lounges, and special meetings.

SCC Chicago Chapter is one of the charter clubs that organized Complex Exhibitions in 1958. Each club awards to its exhibitors their own medals and awards for participation.

As a SCC member you may participate in this year's competition. For details and prospectus contact: C. Norman Andrews, P. O. Box 731, Park Ridge, Ill. 60068.

This year's Grand Award, Swedish Crystal plus the SCC Medals. Palmares will be held Friday, May 1, 1981, 6:30 p.m. at the Swedish Club, 1258 N. LaSalle St., Chicago, Ill.

—S. H. Hanson



Denmark      Iceland      Norway  
 Finland      Greenland  
 Faroes      Sweden      D.W. I.

- Comprehensive price lists
- Wantlist Service
- Complete buying list

**STEPHEN T. SUGAR**

1504 Mission St.      South Pasadena, CA 91030  
 Phone (213) 799-8097





# INDEX

1980

Compiled by Carl H. Werenskiold, H-10

DANISH WEST INDIES

Literature

Engstrom, V. E. : Corrigenda "D. W. I. Mails, 1854-1917, Vol. I." 1980, p. 41

Postal History

Engstrom, V. E. : Danish West Indies, Common and Uncommon Usage of a Common 1c Stamp. 1980, p. 153-158

Reprint

Engstrom, V. E. : The New Danish West Indies Reprint. An insert in Volume II, Danish West Indies Mails, 1754-1917. 1980, p. 57-49

DENMARK

Bicolors

Angevine, D. W. : Denmark Ovals Rising. 1980, p. 190

FAEROES

A (Denmark) 265A-E

Jacobsen, I. : Faroese Stamps 1940-1941. 1980, p. 67-70

Postmarks

Kaaber, H. : Fra Island—A Ship Letter Cancellation from the Faroes. 1980, p. 102-104

Revenues

Nelson, P. : Faeroes Revenue Stamps. (Review and catalog). 1980, p. 4-5

Revenues

Nelson, P. : Faeroes Revenue Stamps. 1980, p. 139

Hunewell, M. : Investment Opportunities in Faeroes Postage Stamps? 1980, p. 119

FINLAND

F3-4

Hvidonov, M. E. : Finland's 1860 Rouletted Stamps. 1980, p. 6-12

F270

Hvidonov, M. E. : Finland—4½ Mark Blue on Letter to France. 1980, p. 182

Forgeries

Fraser, E. : Finland, Fournier's Plentiful Forgeries of the 1891 Issue 3½ and 7 Rouble Values. 1980, p. 14-17

Forgeries

Fraser, E. : Finland. 1980, 96-99

Forgeries

Hvidonov, M. E. : Finland 1856 5 Kop. Pair—A Forgery On A Forgery? 1980, p. 125

INDEX — 1980

**Forgeries**

Hvidonov, M. E. : 1860 10 Kopeck Double Printed Cancellation  
Forgery. 1980, p. 126-127

**Forgeries**

Fraser, E. : Forgery and Postal Stationery Entires.  
1980, p. 165-171

**Literature**

Hvidonov, M. E. : Norma—1981, A Review. 1980, p. 186-187

Fraser, E. : Finland: Cover of the Month. 1980, p. 1-2

Fraser, E. : Finland—Cover of the Month. 1980, p. 81-82

Fraser, E. : Finland (and Sweden) Cover of the Month.  
1980, p. 145-146

**GREAT BRITAIN**

**Fieldpost**

Cornelius, D. : British Military Mail 1940-46: Faroe Islands  
and Iceland. 1980, p. 42-52

**GREENLAND**

**A84F-85F**

Larsen, G. H. : The Fluorescent Features of Greenland No. 93  
and 96. 1980, p. 143-144

**Postmarks**

McGregor, C. : Fakes or Rarities? 1980, p. 136

**ICELAND**

**A71**

LeBlanc, B. : Freak Or Unique? 1980, p. 99

**Literature**

Jónsson, J. A. : One Hundred Years of Icelandic Stamps.  
1980, p. 90-92

**Rates**

Østergaard, F. : Iceland and Interscandinavian Postal Rates.  
1980, p. 39

Collin, R. B. : Icelandic Maritime Cover? 1980, p. 101

**NORWAY**

**N1**

Åhman, S. : "Europe's Most Common Rarity." (Over 2,600  
copies shown at Norwex-80). 1980, p. 159-163

**N16-21**

Snarvold, H. : The Skilling Posthorn Issue. 1980, p. 60-66

N36, 38

————— : Werenskiold Donates to the Norwegian Postal Museum. (Type collections, 249 types of Nk 36 and 267 types of Nk 38). 1980, p. 147

N137-140

Evenson, E. : The Svalbard Issue 1925. (Translation by I. Kapelrud). 1980, p. 72-80

## PHILATELY

### Calendar

Fraser, E. : The Calendar and Philately. 1980, p. 18

### Color

White, R. H. : Color in Philately. (Book review by A. Warren). 1980, p. 23-24

### Postmarks

LeBlanc, B. : Have you seen this postmark? (Scotch circular Granton Harbour, Edinburgh). 1980, p. 38

### Repairs

Fraser, E. : The Philatelic Clinic. 1980, p. 40-41

## SCANDINAVIA

### Literature

Hunewell, M. : Linn's Special Scandinavia Edition—Reprint Offer. 1980, p. 104

## SCANDINAVIAN PHILATELIC FOUNDATION

---

Frye, J. F. : APRL Translation/Publication News. (Status of Scandinavian Philatelic Foundation in relation to American Philatelic Foundation Library and the translation of Scandinavian philatelic literature into English). 1980, p. 33

## SWEDEN

F17-51

Grosso, G. H. : Specialty Group Studies Swedish Ring Stamps. 1980, p. 123-124

### Fieldpost

Grosso, G. H. : Swedish U. N. Battalion Postmark. (Lebarron). 1980, p. 5

### Postal History

Åhman, S. : How Postage was saved on Overseas Mail in the Early Days of Stamps. 1980, p. 113-117

## WE BUY FOR CASH!

In order to supply our worldwide and financially very strong clientele with good material, we are constantly **buying for cash** (naturally we are also looking for consignments!):

Important specialized collections

Rarities

Classical quality items, etc.

Mainly from Scandinavia and Europe, but most areas are of interest.

## WE DO A LOT OF TRAVELLING!

We visit the USA and Canada several times a year and would be delighted to pay you a visit if you have anything of interest to us.



## POSTILJONEN AB

Sodra Tullgatan 3, S-21140 Malmo, Sweden

Telephone 040-72290

(Member of ASDA)

Market leaders of Scandinavia

Our auction catalogues, including the ones from our Danish sister company, will be sent to you for at least one year against US \$5. Ask for free trial copy!

## A Letter From Robert DuBois

Editor's Note: The POSTHORN has received inquiries about the 1972 Iceland 50-mile limit Christmas seals so we wrote to Robert J. DuBois, President-elect of the Christmas Seal and Charity Stamp Society. Mr. DuBois is also chairman of the Society's "Hall of Fame of Seal Collectors" committee.

Dear Barbara:

I am pleased that you wish to reprint my "Iceland's 50-Mile Limit article in the POSTHORN. . . .

There is not much to add that is not in that article except to say that it has been cataloged in the 1979 NORDISK JULEMAERKEKATALOG as: SAMLERBLADET, Reykjavik 1973 (Picture on seal) Iceland—Map (24 diff.)

Perf 40,00 kr — Imperf 150,00 kr.

The picture in the catalog is that of a polar bear on the seal. In my opinion these seals have to be seen as a whole sheet so that one sees the map of Iceland with its proposed 50 mile limit.

Prices in previous issues were:

1975 Perf 15,00 kr. Imperf 75,00 kr.

1977 Perf 20,00 kr. Imperf 100,00 kr.

You can see the price is rising steadily . . . I do not understand the catalog listing above for the year 1973. It is simply a mistake as I got my first copies from Jonas Hallgrimsson (now deceased) in 1972. He wrote that they were not ready from the press until just a few days before Christmas of 1972. He sold one of each sheet to me at that time for \$3.00 (perf) and \$2.50 (imperf) plus postage. This I believe is not much above the actual purchase price as Mr. Hallgrimsson was a friend and did not mark his prices up too high. How I wished I had listened to his advice that these seals would be rarities within a few years!

At that time I simply did not feel that the postage paid price of \$16.35 (\$15.50 plus 85c) was low enough to encourage purchasing more than a couple of sheet sets. At a lesser price I'm sure the whole issue of 8000 perf sheets and 1000 imperf sheets would have been sold out and none would have had to be destroyed. Since they were destroyed via cutting I have wondered if any survived that treatment. I once received some singles from a dealer that were rather wrinkled and untidy in appearance and these could have been survivors of that destructive operation. I have inquired about this but cannot get answers. They should have been destroyed via burning (as old U. S. money is destroyed).

Sincerely, Bob DuBois

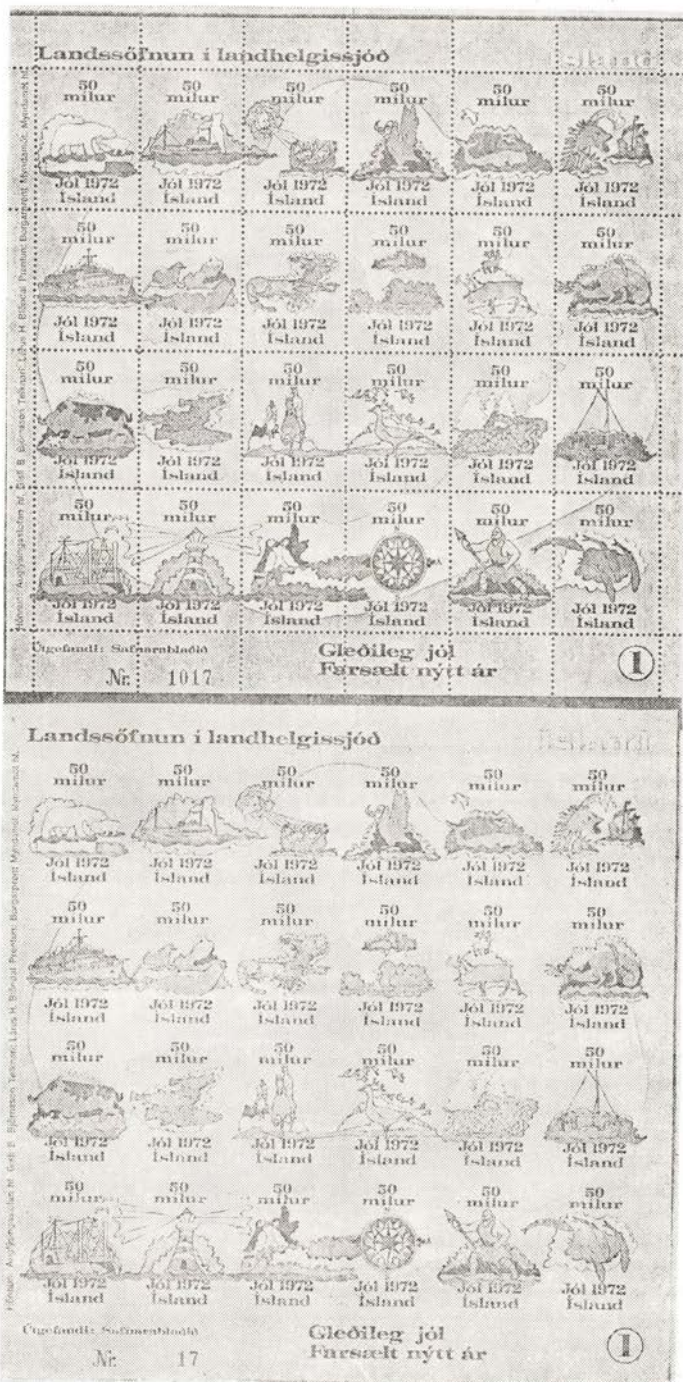
### ICELAND'S 50-MILE LIMIT "CHRISTMAS" SEALS — By Robert J. DuBois Leawood, Kansas

Each Christmas season there are many seals issued by various groups in Iceland.

A few of the more prominent fund-raisers include: Thorvaldsens Society (national seal); Akureyri (Women's Association); two different Lion's Clubs; three different Rotary Clubs; Scouts; Odd Fellows; and Kiwanis.

During 1972 another group—known as "The Territorial Waters Fund"—decided that a Christmas seal might also raise funds that could go toward the purchase of a new patrol boat. Iceland had been attempting to protect its coastal fishing rights for many years.

In 1972, there were only four small coast guard boats available for this purpose.



The "Fund" sought and obtained the help of a collector's magazine known as "Saffnara Bladid." The latter magazine arranged for the printing of the seals and handled the collection of the money for the "Fund."

The following groups participated in selling the seals (the amounts of money are indicated to the nearest whole U. S. dollar—there were 87 Iceland krona to the dollar in February, 1972): Sigtryggur Eythorsson, (distribution representative) \$2,154; postal administration, \$2,141; The Stamp House, \$874; The Stamp Center, \$417; secondary school (college preparatory), \$243; agency of the "Fund," \$150; "Saffnara bladid," \$61. The total income collected was \$6,040.

The following manufacturing and selling costs were incurred: Gisla B. Bjornsson advertising agency, \$1,305 for designing, \$76 for additional work and \$125 for advertising; photographic firm for plate, \$402; printing firm, \$1,264; advertising, \$678 for newspapers, \$41 for radio; expense for making specimen, \$62; expense for meetings, \$69; various distribution costs, etc., \$173. Total expenses were \$4,195.

The above data indicate a net profit of \$1,845. The selling price of the seals, per sheet, was about \$2.76 perforated and \$11.48 imperforate. Total sales amounted to only 1,223 of the 8,000 perforated sheets and 232 of the 1,000 imperforate sheets.

It is apparent that a profit of over \$29,000 could have been realized from the sale of all the sheets. The prime reason for the nominal profit was the short sale period; the seals were not ready from the printer until just a few days before Christmas (about Dec. 15).

Most Christmas seal fund groups make their seals available about three months ahead of Christmas. The committee for the "Fund" decided to close the sale on March 1, 1973; it had been decided prior at that time that any unsold seals would be destroyed.

The following events are recorded in the "Notaries' Book of Reykjavik," dated March 19, 1973:

1. The president of the "Fund" and representatives for "Safnara Bladid" met in the office of Sigurdur M. Helgason, notary public;
2. An itemized list of the sheets to be destroyed was listed by sheet number and by count. The totals were 6,777 perforated sheets and 768 imperforate sheets;
3. The notary went with all present to the printers, and all of the mentioned Christmas seals were destroyed by tearing the sheets with a paper knife in the manner that each sheet was separated into parts. This act was witnessed and signed by the notary and four witnesses;
4. The men in the group then went to the photographic company and proceeded to destroy the photographic plates and all negatives that were a part of it. This act was witnessed and signed by the notary and four witnesses, two of whom were the same as those present at the sheet destruction.

The sheets themselves consisted of 24 different seals (see illustration) in horizontal rows of six by vertical rows of four. The individual seals depict boats, fish, birds, animals and other national motifs.

Numbered in sequence from left to right, top to bottom, seals 6, 12 and 17 even depict a few sea serpents. Seal 21 shows a volcano.

The sheet as a whole pictures a map of Iceland, surrounded by a 50 mile fishing limit. The country name "Island" (Iceland) appears at the top right corner of the sheet; other less-obvious legends appearing in the selvage are also of interest.

At top left is the legend "Landssofnum i landhelgissjod" (land collection



for the Territorial Waters Fund); at bottom left, "Utgefandi: Safnarablaðið" (Producer: Safnarablaði) and individual sheet number (imperf sheets had numbers from 1-1000, while perforated sheets had numbers from 1001-9000); bottom center, "Gledileg jól" (Merry Christmas), "Farsaelt nýtt ar" (Happy New Year); and at bottom right, a large number "1" with a circle around it (it is assumed this indicates these sheets were originally planned to be the first of a series.)

The left border lists the following groups: Advertising Agency of Gisla B. Björnsson, designer; Larus H. Blöndal, printer; and Borgarprent Photographic Firm.

There have been opinions expressed by seal collectors and dealers that these are not Christmas or TB seals. They are certainly not TB seals; in fact, there are very few seals issued exclusively for TB any more, due to the much-improved control over that disease.

The various TB fund groups have now expanded their areas to include emphysema, air pollution, heart and chest diseases, etc.

The legitimacy of charity seals is connected intimately with the purpose to which the funds are applied. A "cod war" or "50 mile limit enforcement" is certainly not a "charity" in the usual sense, but it must be remembered that the major industry in Iceland is fishing.

The protection of that industry is of prime importance to the collective and individual well-being of the country; most people agree that "charity begins at home."

Each seal, by the way, says "Jól." Ask any Icelander—that means "Christmas."

(I am indebted to the following persons for translating and other services: the late Jonas Hallgrímsson, Reykjavik, Iceland; Sugurd Arnason, Siglufjörður, Iceland; Sigurjon Bjornasson, Kopavogur, Iceland; George and Thora Sickels, Union, N. J.; Carl H. Werenskiold, South Ozone Park, N. Y.; and Inga Pierson, Liberty, Mo.)

Reprinted with the permission of the author, Robert J. DuBois and Linn's Stamp News where it appeared on November 14, 1977, page 60.

\* S \* C \* C \*

## Robert Gross Writes

Dear Barbara:

Thank you for your letter . . . Wayne Sommer also sent me a copy of the sheet of 100 of the 1948 Iceland Olympic Seals. In going back over my notes, I find that the information I gave you was from some notes I made while in Iceland in 1956 from info supplied by a collector friend who is now deceased. I don't recall that I actually saw a sheet of them.

I am inclined to believe that this information was either:

1. In error and that the correct information should be sheets of 100 as Wayne indicated, or
2. The information that I obtained was from a sheet of "specimen" overprints. However I have no way of verifying this information . . . I think that it would be best to assume that the seals were printed in sheets of 100.

I'll be sending you some information soon on a couple of other Icelandic items that are rarely seen by collectors.

Keep up the good work. The POSTHORN is an excellent publication.

I'm now in the process of updating the index for the LUREN for 1980—the 1980 index will be out with the January 1981 issue.

Sincerely, Bob Gross

## Cover Quiz Of the Month—Finland

By Ed Fraser #954

Two ordinary postcards, chosen at random from a quantity of similarly-franked cards from the same sender to the same addressee during the same era.

The questions posed are simple:

1. Do these 2 cards reflect the proper postage rate?
2. If they do, what is the brief explanation?



Figure 1. Ordinary picture postcard to Sweden with 5 pen green, 5 pen gray, 10 pen light blue, and 25 pen light brown (Scott numbers 83, 84, 87, and 92 respectively) cancelled "Tampere 13.1.26."



Figure 2. Ordinary picture postcard to Sweden with 20 pen buff and 40 pen green (Scott numbers 88 and 95a) cancelled "Tampere 14.1.26."

Figure 1 is cancelled "Tampere 13 Jan., 1926," and Figure 2 is cancelled "Tampere 14 Jan., 1926." Both are ordinary picture postcards, with no stamps, cancels, or writing on the picture side, and the standard postcard postage rate did not change during January 1926. Both cards are designated "Tryckalster" for "printed matter." Postal rates sometimes vary for postcards with a written message and one with virtually no message.

The answer is paragraph length in this issue—the reader has to find it!

\* \* \*

If anyone has an item that might be interesting for a "Cover of the Month" story, could you drop me or Joe Frye a note. My personal preference would be for ordinary, non-philatelic covers showing some interesting aspect of postal practice. Ed Fraser, 60 Broad Street, 26th Floor, New York, N. Y. 10004.

\* S \* C \* C \*

## SCC Calendar

Make note of the following SCC Regional and National meetings. Our first Regional Meeting in 1981 will take place at Chicago's COMPEX under the auspices of Chapter 4. Theme for this show will be the centenary of the American Red Cross. COMPEX is being held at the EXPO Center, 350 North Orleans St., in Chicago, May 1-3. COMPEX has been moved up this year so as not to conflict with WIPA scheduled later in the month in Vienna.

The next 1981 Regional Meeting will be at Boston's Philatelic Show with Chapter 5. Wayne Rindone reports that the Boston show may be moved from August to October, and will advise the exact dates. Whether it is during the late summer or in the midst of the fall colors, plan to attend, and perhaps see the Cardinal Spellman Philatelic Museum at the same time.

The SCC Annual Meeting in 1981 will take place at NOJEX, the annual exhibition and bourse sponsored by the North Jersey Federation of Stamp Clubs. Chapter 9 will be the host, and the dates (not yet confirmed) are expected to be the last weekend in October. Location is the Jetport Holiday Inn in Elizabeth, NJ. This is very convenient to Newark airport, and for those who are driving there is the possible extended vacation into the "Big Apple" before or after the show.

\* S \* C \* C \*

## Executive Secretary Considered

During the last six months, the Board of Directors has been investigating the feasibility of hiring an individual to fill the appointive office of Executive Secretary of the SCC, as described in the Society Bylaws.

It is the Board's opinion that the society has reached a critical size (over 1000 members) where it would benefit considerably from finding a person to handle routine day-to-day administrative duties.

The Board, at its annual meeting at MEMPHEx, appointed a committee to draft a list of duties and to propose a salary level and method of financing for the position. Wayne Rindone, the incoming SCC Secretary, was appointed chairman. Other members include Alan Warren, Kauko Aro, Ron Collin and Don Himer. This committee will be formulating a final proposal for approval by the Board in the coming weeks.

Any member who wishes to have a copy of the current working proposal or who wishes to make any comments or suggestions should write to:

Wayne P. Rindone, P. O. Box 276, Newtonville, MA 02160.

## President's Message

The SCC election (see report elsewhere in this issue) has resulted in a substantial number of new faces among officers and director-at-large, and yet the transition between administrations seems to be going smoothly. This is largely because those elected have been involved in SCC activities, and were thus ready to step into their new assignments.

It is also reassuring to know that those leaving office will remain active in SCC and Scandinavian philately in various capacities. Ron Collin continues as Awards Chairman, Fred Bloedow will continue to stock most of our literature items and maintain membership records, Kauko Aro is a member of an important committee (see below), and George Koplowitz continues to head the Scandinavian Philatelic Foundation.

The committee mentioned above was appointed at the MEMPHEx board meeting, and consists of Don Himer, Ron Collin, Kauko Aro, myself, and Wayne Rindone as Chairman. The goal is to review the possible need for an Executive Secretary to take on some of the many chores now spread among various offices, which are taking increasing amounts of time. A possibility is a part-time position with some compensation, depending on the scope of the position and the Club's finances.

The following appointments are reconfirmed for the 1981-82 term:

POSTHORN Editor: Joe F. Frye  
 POSTHORN Business Manager: Eric Roberts  
 Awards Chairman: Ronald B. Collin  
 Publicity Manager: Marvin D. Hunewell  
 Literature Promotion Chairman: Donald W. Himer  
 Librarian: Stanley H. Hanson  
 Convention Planning: Eric P. Karlson  
 Stamp Mart Manager: Wade H. Beery  
 APS Representative: Joe F. Frye  
 SPA Representative: Victor E. Engstrom

I want to thank the Nominating Committee, Don Halpern, Christine Blinn, and Chairman Vic Engstrom; and the Election Committee, Bob Frigstad, Ove Braskerud, and Chairman Willard Johnson. One of the healthiest signs I see in the new slate of officers and list of committee chairmen is a truly diversified representation from all parts of the country—east, midwest, and west.

SCC has come a good way in the past two years, especially our international presence underscored by the use of our award medals and the NORWEX meeting. However, there is much room for improvement and growth, and this expansion for the good of Scandinavian philately will be stressed in the coming two years.

The October 11 issue of *Stamps* carries an article by member Andrew Steiner about the NORWEX 80 show in Oslo, including mention of the meeting held by SCC there. Mr. and Mrs. Steiner stayed in the same Oslo hotel that my wife and I stayed in, the Ansgar. We will never forget those delectable and sumptuous Norwegian breakfasts at the Ansgar! In addition to his Scandinavian collecting interests, Andrew Steiner is also President of the Maximum Card Study Unit.

Our Business Manager for the POSTHORN, Eric Roberts, is preparing a leaflet for prospective advertisers. We are increasing ad rates slightly to keep up with inflation. Eric has attracted some new advertisers and we encourage members and readers to patronize them and mention where they saw their ad.

A lengthy correspondence with the publishers of the famous **Scott Catalogue** has resulted in updating their reference to SCC. Since we are incorporated in the state of Delaware, Bob Brandeberry's address will be the contact for Scandinavian area questions. The change will appear in Volume IV of the 1981 edition, and all future volumes. Thanks to Ben Cohen of Chapter 4 for building the fire under the Scott people.

#### Awards

A gold award went to G. Brooks for an exhibit of Danish Bicolored stamps at HOUPEX 80. A SEPAD silver-bronze and the American First Day Cover Society award for best foreign FDC exhibit went to Alan Warren for FDCs of Finland and Sweden, 1935-1949.

Paul Nelson, Editor of Chapter 17's noteworthy publication **Luren**, shared the Grand Award at SESCOAL for philatelic periodical literature. The other winner was Ken Wood of **Stamp Collector**. At the international show Buenos Aires '80 in Argentina, SCC member Gary H. Houser won a silver medal, with felicitations of the jury, for his exhibit of Greenland.

Alan Warren

\* S \* C \* C \*

## A 10c Stamp With A \$3,250 Postmark

(An Auction Review, by M. D. Hunewell)



One of the finest specialized Faeroe Islands Collections ever formed by an American philatelist and SCC member, was recently sold by Skandia-Postillonon A/S of Denmark. The collection, offered under the pseudonym of "Julius L. Spencer," was broken down for auction into 264 lots.

The stamp illustrated was the highlight of the sale as it is the rarest of all the postmarks. This lot was finally knocked down at 16,000 D.Kr., versus the estimate of 7,000 D.Kr. Roughly \$3,250 after adding 12.5% buyers' commission.

Of the 264 lots offered, 256 were sold, summarized as follows: (Prices in

D.Kr.)

No. of Lots	Category	Estimated Value	Realized
20	4 øre Bisected Stamp Lots	64,900	74,300
11	4 øre Bisected Wrapper Lots	58,300	59,000
29	2/5 øre Provisional Lots	83,400	91,820
137	World War II Lots (Provisional stamps, Franco Betalt Handstamps, 6 øre used as 5 øres, and British Field Post Offices)	130,500	169,140
59	Postmark Lots, 1870 to 1963	47,800	81,280
256	Total	384,900	475,540

These 256 lots (including the "Ruth" postmark lot) realized close to \$100,000 for an outstanding offering.

The auction catalog notes that "Julius L. Spencer" was awarded the National Grand Prix at Stockholmia 74 for his exceptional Swedish collection, which is considered the finest in the world. A review of the November 1974 issue of *The POSTHORN*, Whole No. 120, will reveal his identity.

## **SELL SCANDINAVIA IN SCANDINAVIA!**

If you have choice Scandinavian material to sell, why not sell it where the top prices are paid? Our buyer and vendor list includes customers from 35 different countries. That's why we can sell all kinds of fine quality material at top prices.

Give us a try. We are now putting together material for our next auction.

Should you prefer to sell for cash, we naturally would welcome the opportunity to discuss your holdings with you.

And if you are not now on the list to receive our auction catalogs, write to us.

**BENGT LILJA**

**Stamp Auctions Limited**

**Stora Nygatan 31**

**S-211 37 Malmö, Sweden**

Member ASDA PTS APHW

## Nordia Exhibition 1981—Miniature Sheets

By M. E. Hvidonov

The NORDIA EXHIBIT which will take place in Helsinki from May 6-10, 1981, celebrates the 125th anniversary of the issuance of Finland's first adhesive postage stamps in 1856. The stamps were of 5 and 10 kopeck values and are known as "ovals." This stems from the fact that the design of the stamps was an oval outline in shape, with other details being contained within the oval frameline. The stamps were imperforate and were usually "square" when cut from sheets by the postoffice or on the other hand some were "cut round" by people who perhaps had nothing better to do. The 5 kop. stamp was printed in blue and the 10 kop. stamp in red.

The miniature commemorative sheet issued in honor of this event will be offset printed in the original colors by The Bank of Finland.

20,000 miniature sheets, consecutively numbered, will be produced and sold by Finland's Stamp Dealers and

The Finnish Philatelic Association. The retail value has been set at 10 Finn marks (a bit over \$2.50 each). The sale of the sheets will extend until the end of September 1981 after which date the balance will be destroyed.

The proceeds of such sale will be employed to support the philatelic projects and research sponsored by "Suomen Filatelistiliitory" (The Finnish Philatelic Association).

\* S \* C \* C \*

## A Faroe 'Find'

By Marvin Hunewell, Associate Editor

A very fine used copy of Denmark's 5 Kr. stamp of 1915 (Scott 135, Facit 121, AFA 81) realized \$125, plus 10% commission, in the J. & H. Stolow, Inc. Auction Sale held December 15-20, 1980.

So what??? This was the first time that I had seen this stamp with a beautiful Thorshavn cds (dated 21.1.21), and it makes a warm addition to my Faroe Island exhibit.

The auction catalog made no mention of the Faroe Island "socked-on-the-nose" cancel. It's just another example of what us collectors can "find" when we study pictures in auction catalogs, or pay unusual keen attention to stamps in sales circuits, or approvals. (My most memorable time in Philadelphia in 1976, during my wife's and my visit to INTERPHIL, was when I spotted a nice used copy of Denmark's 5 øre Military Stamp variety (AFA 1xx).)



## The Editor's Mailbag

WESTPEX '81, April 24-26, Jack Tar Hotel, Van Ness and Geary St., San Francisco, CA will again offer the beautiful Al Van Dahl Memorial Award — an Orrefors crystal vase (shown here) — for the best exhibit of Scandinavian material. Prospectus from S. Schumann, 2417 Cabrillo Dr., Hayward, CA 94545. Entry deadline March 10th!

ROBERT L. MAURER, a "new member of SCC," says the *Posthorn* is "After *The American Philatelist* . . . the best philatelic journal I receive or am familiar with." Take a bow, all you Associate Editors and authors! Mr. Maurer wishes to see article(s) on Scandinavian booklets in this journal. Contributions of mss. always welcome.

GEORGE BROOKS (SCC 1978) advises a possible new chapter being formed, meetings bi-monthly beginning January 19th at the Central Presbyterian Church, 3788 Richmond, Houston, TX. Those in the area welcome. He asks "Where is HVORNUM?", enclosing a Danish pair of stamps with all-capital double-ring \* cancel. His address is 17510 Heritage Bay, Webster, TX 77598 for responses.

EDWIN L. KEITZ (SCC 1000) writes to note an error in the 1980-81 SFF catalog, page 115, two sketches noting difference between types I and II of the 15 öre red Gustav V left profile—the sketches are reversed; the left sketch is SFF catalog no. 177, type II and the right, of course, is no. 176, type I. Thanks, Ed.

A considerable amount of literature has come in but time does not permit inclusion in this issue. See "Deadlines" article, this issue for revised POSTHORN deadlines as requested by our good printer, Mr. Harlan Miller.

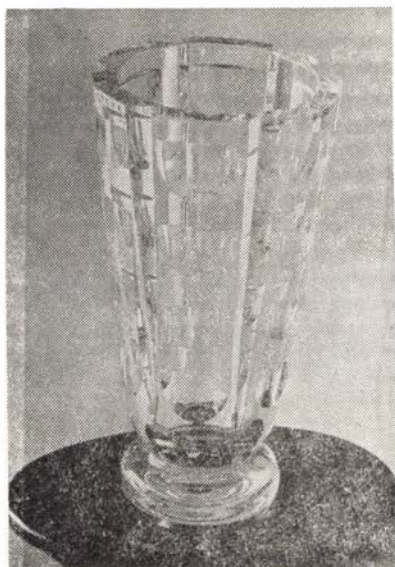
If you'd like a sample copy of the *News Bulletin*, quarterly journal of the A. P. S. Writers Unit 30 (which I edit and produce for them) send \$1 cash or o.g. postage to me and you'll receive a copy of the upcoming issue, which though being produced/mailed in January of 1981 is the combined September/December, 1980 issue and will be fat and heavy with philatelic literature and communications details of wide interest, including reviews of a 10-month accumulation of publications from hard-bound books to mimeo single-sheet journals.

—Joe F. Frye

### Deadlines

Mr. Harlan Miller, our long-suffering and estimable friend and printer, asks that we revise the deadlines for photos and text for the POSTHORN as follows, effective January 1, 1981:

Issue dated	Mails about	Editor's deadline	Printer's deadline
February 1981	Feb. 15th	Dec. 15, 1980	January 1, 1981
May 1981	May 15th	March 15, 1981	April 1, 1981
August 1981	August 15th	June 15, 1981	July 1, 1981
November 1981	November 15th	Sept. 15, 1981	October 1, 1981





Please notice that this makes the deadline for receipt by your editor sixty days (two months) prior to date of issue printed in the publication and about 75 days (two and one-half months) prior to actual mailing date.

Associate editors are particularly requested to copy and retain the schedule above, and those dealing with associate editors should be sure they allow the AE involved ample time for handling and forwarding to the editor in time for a particular issue.

Advertisers should contact Business Manager Eric Roberts for details concerning ad deadlines.

—Joe F. Frye

\* S \* C \* C \*

## Editorial

As you will see from the paid advertisement in this issue, some changes in my activities have been made during the fall of 1980. It is hoped these will allow a little time for some of my own personal activities and make the various small services performed for the hobby—such as this journal's editing—somewhat more efficient and prompt in handling, with a little less pressure on your obedient servant.

This issue marks the first such for the fifth year of my editorship. Hard to believe that four full years have passed so quickly, but the calendar leaves fall more quickly as we grow older. It has been an interesting experience, full of good friends who have contributed much of their time, effort, and talents toward making this the eminent and prominent journal it has become. My warmest thanks to all of you, and the invitation to any of our readers to write me at any time with their thoughts concerning the journal, SCC, the hobby, or whatever.

Unless your incoming item in my "mailbag" obviously requires it, a response will not usually be made except in the pages of this—or the appropriate other—journal(s). If you MUST have a reply, or acknowledgement, please mark the first page of your mailing piece "reply (or acknowledgement) requested." This is not an effort on my part to be egotistical or whatever, just a simple fact of life that not everything can be gotten round to in one lifetime, however much these nice "extra touches" might be desired on my part.

A happy New Year to all.

—Joe F. Frye

SWEDEN - ICELAND - FAROES  
DENMARK - NORWAY

Recent Issues

Year Sets

New Issue Service

**Vikingaskepp Philatelic Service**

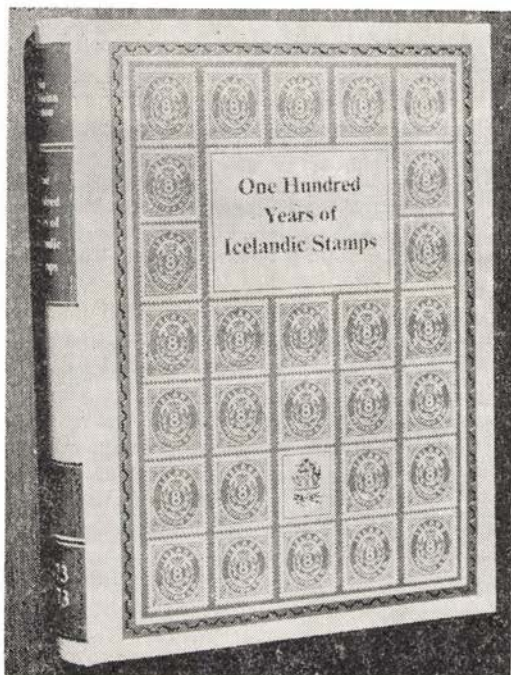
Box 5072, Station F

Ottawa, Ontario, Canada K2C 3H3

## One Hundred Years Of Icelandic Stamps

Reprinted with permission of the Director General of Posts and Telecommunications, Reykjavik, Iceland

By Jon Adalsteinn Jonsson



The Fate of the Last Skilding stamps  
(pages 130-132)

The Governor had received authorization to sell to both Fischer and others the old skilding stamps with a discount of up to 50%, if on each occasion the purchase were for a minimum of 500 kronur. This arrangement lasted for the whole of the next decade, and readers can study the annual sale of the stamps on the Table on p. 137 and forward.

Despite the large discount, few stamps were sold in some years, and at times even none, such as in 1884 and 1885. Thus by 1890 quite a large number remained unsold. It then happened that a buyer appeared who wanted the whole balance, and at a much higher price than had been obtained in preceding years. There is no doubt that this was due to the rising demand abroad for these old Icelandic skilding stamps.

We now come to the final stage of the matter. In an undated letter, without even the year, from Ditlev Thomsen, a Reykjavik merchant, to the Governor in the autumn of 1890, probably September, Thomsen asks to be allowed to buy the balance of the skilding stamps and offers to pay 25% more than the nominal value. As this letter throws in a few words a clear light on the last chapter of the whole affair, it is reprinted here as follows:

As your Excellency will be aware, part of the skilding stamps in-validated several years ago are at present in the offices of the Governor.

Whole sheets have mostly been sold, but there are still available 40,737 stamps, almost entirely individual stamps, which were at the time returned to the Head Postmaster from the various collecting offices in the country. Your Excellency will also be aware that part of these stamps are now not in very good condition, as some of them were set up on a string or band during the time of the Secretary, the late Jon Jonsson, while others have in the course of time become stuck together, so that it will be very difficult to sort and count the stamps.

Most of the stamps have been sold for 50% of their nominal value, cf. Ministry letter of 26th January, 1880, and I myself bought in 1882 a large quantity at this price. I wish now also to buy this lot, but as the stamps have risen in price I cannot expect to enjoy the concessions granted by the Ministry in its letters of 26th January, 1880. On the other hand, I offer to pay 25% more than the nominal value, which is  $2\frac{1}{2}$  times the price I paid in 1882. And as closer examination and sorting of the stamps will be very difficult, I also offer to take at the same price all the poor copies available and to accept as correct the inscription describing the contents of each envelope without regard to the condition of the stamps therein.

Payment of 7607.20 kronur—seven thousand six hundred and seven kronur and twenty aurar—will be made in cash immediately on receipt.

Looking forward, Your Excellency, to the favor of your reply, I am,

Yours respectfully,

D. Thomsen

To the Governor of Iceland.

\* \* \*

When the Governor received this respectful letter from Thomsen, he reacted quickly and wrote the Ministry for Iceland a letter dated 1st. October, forwarding Thomsen's offer with its conditions. A draft of the letter is preserved in the archives of that office. The Governor states the quantity of stamps involved, taken at a rough count. He also mentions the condition of quite a large part of the stamps, as referred to in Thomsen's letter. Then the Governor was intending to mention the curious phenomenon referred to by Thomsen, i.e. that some of the stamps had been set up on a string or band. It is clear he thought this a strange method. For some reason or other, the Governor deleted this comment from his final letter to the Ministry. He just added that the stamps had been spoiled in another way.

Then the Governor said he thought it natural to try to sell this stamp remainder in as profitable a way for the Treasury as possible. On the other hand, he said he was unable to give an opinion as to whether the said stamps could be sold in another and more profitable way than by the acceptance of Thomsen's offer. Therefore:

I permit myself to refer the matter to a favorable decision of the Ministry, and to request that, if the said offer can be accepted, I be given authority to take charge of such sale.

It has come to light that the Ministry asked for information about the sales value of these skilding stamps from stamp dealers in Copenhagen. After that, the Ministry granted the Governor the requested permission for the sale of the stamp remainder. It is therefore clear that at the time no more favourable offer than that of Thomsen had reached the Governor.

Immediately after the Governor received the letter with the postal steamer, he arranged for the sale to Thomsen. He informed the Ministry in a letter dated 26th November that the sale had taken place and all the balance had

been taken by Ditlev Thomsen, merchant, for a total sum of 8049.18 kronur. It was stated that some stamps of each denomination had been retained and would be kept in stock. An amount of 3049.18 kronur was paid in cash, and this went into the rental fund, which was in the custody of the Treasurer. The balance, 5000 kronur, was paid by cheque issued by Thomsen on 26th November in the name of F. Fischer, merchant in Copenhagen.

On 12th January, 1891, the Ministry wrote the Governor another letter, informing him that this amount had been paid and had been received by the Chief State Treasurer. In this way the Icelandic Postal Administration had rid itself of the old skilding stamps, and no doubt all parties concerned were satisfied with the Transaction.

\* S \* C \* C \*

#### COVER QUIZ ANSWER

Unlike later regular issues, the Saarinen design "Republic Issue" of 1917, Scott numbers 83-110, etc., are several distinct groups of stamp issues. They include the 1917/1918, 1919/1920, 1921, 1925 issues, etc.

With inflation after World War I and adjustment of postal rates worldwide, new values in new colors were needed. Low values that were replaced by new colors became invalid, and hence the 5 penni green (#83) and the 20 penni buff (#88) issued in 1917 and 1918 became invalid on May 31, 1920. These invalid stamps were added to the correct 40 penni postcard franking, apparently to make the cards more attractive for a stamp collector. The result was covers with "after-cancelled" stamps on them.

This can be especially disappointing to today's cover collector if the "after-cancelled" stamp would have been rare if correctly used. Soaked off cover, with their genuine—but "too late" cancels, such "used" stamps are dangerous imitations of genuinely used ones.

## SPECIALIZED SALES of SCANDINAVIA

6 times a year we have a sale exclusively against written bids, specializing in:

DENMARK

FAROES

GREENLAND

DANISH WEST INDIES

NORWAY

SWEDEN

FINLAND

Each catalogue contains 1200-1500 lots and is fully illustrated. ALL single stamps are illustrated in actual size, as are also many covers, etc.

Ask for FREE catalogues from:

### O. GOTTLIEB A/S

P. O. Box 1019

Viemosevej 5 C, Bredballe,

DK-7100 VEJLE, DENMARK

Tel. (05) 81 61 25

Member: Philatelic Traders' Society, London,  
Danish Stamp Dealers' Association

## ED FRASER

All readers of POSTHORN know that Ed has written prolifically about Finnish philately. He may have become the most active writer in the English language in that area of our hobby!

Apparently Ed's activities have reached back to Finland since Suomen Filatelistiliitto (Union of Finnish Philatelists) recognized his efforts. Every year their Board of Directors awards authors of philatelic books and articles with stipends that run from 100 Marks up (= \$25.00). Ed was awarded Fim 100.

This achievement is even more remarkable than the money alone would indicate, as Ed is only the second foreigner receiving the stipend. Congratulations, Ed!

\* S \* C \* C \*

## SAVE THE LEAD IN THE PENCIL . . . AN EDITOR'S SUGGESTION LIST

"Came to light"="appeared." "Due to the fact that"="because." "Which consisted of"=usually not required since sentence/paragraph usually benefits by its absence. "At that time"="then." "At this point in time"="now." Avoid such space-wasters and utilize the saving for more beneficial information.

A general, rather than definitive, statement of fact is usually better. "The XYZ Company in their 1-1-1899 sale lot 372 offered a fake. . ." One is rather less likely to encounter engorged rage and legal action by giving the facts about the "fake" and not naming the source. That XYZ Company might not, after all, have known the fake was a goat and not a sheep—and you have to PROVE, possibly in a court of law, any defamatory or injurious statement you utter or publish. Definitive statements of course are sometimes necessary and vital, but think how your words sound "on the other side" before you send them for publication, or speak them.

A donkey might not realize he is an ass. Any writer worth his salt has realized at some time or other than he has made a (donkey) of himself, but the likelihood decreases by taking the opposing view and considering writings before submitting them. Very few (donkeys) appreciate being notified they are—or have become—an ass. . .

Write tight. Be definite in places where you might presume knowledge the reader(s) may not possess, and give necessary details to make clear your point(s).  
—j.f.f.

## FAROES POSTAL HISTORY

Old letters posted from Faroe Islands 1890-1916. Priced from ½ dollar to one thousand dollars.

Please write in Danish if possible

INGVARD JACOBSEN

Box 186

3800 Torshavn

Faroe Islands

SCANDINAVIAN COLLECTORS CLUB  
TREASURERS REPORT

31 December 1980

Cash balance 1 January 1980 \$10,769.26

RECEIPTS:

Advertising	\$8,010.50	
Admission Fees	195.00	
Interest on Savings	1,283.43	
Literature Sales	1,248.08	
Membership Dues	5,843.54	
Posthorn Subscriptions	45.00	
Sale of Medals and Insignias	29.00	
Total receipts		\$10,654.55

EXPENDITURES:

Posthorn Expenses:		
Publishing costs:		
Address Plates & Envelopes	\$271.75	
Postage	433.21	
Printing	2,664.00	
Printing Cuts	464.50	
Total publishing costs		\$3,833.46
Editor's costs:		
Postage	\$ .00	
Telephone	.00	
Total editor's costs		\$ .00
Total Posthorn Expenses		3,833.46
Administrative Expenses:		
Chapter Sponsorships	\$ 291.00	
Dues Notices	137.25	
Dues and Subscriptions	41.00	
Election Expenses	281.67	
Library	300.00	
Medals and Insignias	801.80	
Membership Cards	166.54	
Office Supplies	663.99	
Postage	492.10	
Printing	126.73	
Publicity	99.86	
Telephone	47.84	
Total Administrative Expenses		\$3,449.78
Total expenditures		\$7,283.24
Surplus		\$3,371.31
Cash Balance — 31 December 1980		\$14,140.57
Checking	\$4,140.57	
Savings	10,000.00	
Total	\$14,140.57	

Respectfully submitted, Ronald B. Collin, Treasurer

# Welcome to our 37th Quality Auction

20-21 March 1981  
Stockholm, Sweden



## SWEDEN

Select letters including 4 shilling banco turquoise, Varnamo 55+80 and official stamps of luxury class and a large section of coil stamps. Wholesale lots.

## NORWAY

We take pleasure in offering one of the world's largest and finest exhibition prize collections. A superb offer of rare letters and Norway No. 1 with luxury date stamps.

## GREENLAND

A large selection of parcel-post stamps in whole sheets with inverted surcharge and several offers of motif series with surcharges. An excellent opportunity.

## FAROE ISLANDS

Never-hinged blocks of four of the entire first surcharge series as well as single series with variations. Letters with the provisional issues from 1919 are also offered.

We invite you to attend the Spring season's grand NORDIC QUALITY AUCTION. The items to be auctioned are of very high class and include many rarities from several exhibit collections which we have been entrusted to sell. We hope to see you at our showings and during the days of the auction.

The auction catalogue will be sent to those who have subscribed for 1981. Since the auction register has been converted to data processing, you should now hasten to ensure that your subscription fee has been paid so that you will receive our exclusive catalogue for this authentic quality auction. The fee is only 25.00 Skr for the whole year 1981 and this includes our magazine FH-Nytt (FH News) which, among other things, contains the list of results. The subscription fee may be paid into our post giro account in Stockholm 53301-8. Mark your payment "auction 1981." The amount may also be enclosed by cheque or cash together with the completed coupon below.

Yes, I want to subscribe to "auction catalogues for 1981" and enclose the sum of 25.00 Skr cheque/cash.

Name \_\_\_\_\_

Address \_\_\_\_\_



**FRIMÄRKSHUSET AB**  
STANLEY GIBBONS INTERNATIONAL  
Mäster Samuelsg. 5-11144 Stockholm, Sweden

PH

Denmark

Finland

Iceland

Norway

Sweden

Price list available

**D. G. HERBERT**

Dealing Exclusively In Used

**SCANDINAVIA**

1198 South Alcott Street, Denver, Colo. 80219

**MEMBER-TO-MEMBER**

THIS SPOT is reserved for your member-to-member advertisement. The first 20 words cost you \$2.00 (this is the minimum) and it is 10c per word after that. Send your ad and your check to Business Manager Eric Roberts, 2763 N. Westfield Pl., Claremont, CA 91711. Include your membership number in your ad, but don't count it as part of the total number of words.

ICELAND wanted: Wanted your retired society sales circuit books; fair prices paid. I will refund your postage also. Donald Schodrof (#2244), Box 387, Sheridan, IL 60551.

AUCTION: Chapter 17 has two fine auctions per year with no buyers fee. Request catalog from: Auction Chairman, P. O. Box 57397, Los Angeles, CA 90057.

NORWAY—Collection of 476 stamps mounted in Scott Hingeless album. 1981 Scott approximately \$1600.00. Some minor faults on early stamps. Collection includes #s 1, 5, 8, 9, 13, 15, 20, 21, also over 75% complete in Semi-postals. Net price \$950.00. Raymond Petersen, (#2303), 151 Washington Circle, West Hartford, CT 06119.

WANTED: Offerings of non-philatelic covers of Aunus, Karelia, East Karelia, North Ingermanland, etc. Ed Fraser (#954), 26th Floor, 60 Broad St., New York, NY 10004.

**NEW MEMBERS**

- 2456 LIBBY, David A., 31 Martland Ave., Brockton, MA 02401  
Scandinavia by W. Rindone #2101
- 2457 BEDNAR, Leif K., 1524 Chalice Crescent, Mississauga, Ont. L5C 1S3  
Canada — Norway, Iceland, Faroes, Greenland by K. Aro #1338
- 2458 IVERSON, P. Myron, 10792 Oakland Rd., San Antonio, TX 78240  
Scandinavia, Indonesia by K. Aro #1338
- 2459 PELTOSALO, Arthur E., Gibson Island, MD 21056  
Finland, Denmark by K. Aro #1338
- 2460 SCHULTZ, Larry P., 125 Imperial St., Kalamazoo, MI 49001  
Sweden, Coils of the World by A. Hendrickson #2144
- 2461 GJERDE, David, 8 Clipping Tree Lane, Cockeysville, MD 21030  
Scandinavia by A. Hendrickson #2144
- 2462 CARBIS, Neal, 520 N. Yucca, Rialto, CA 92376  
Scandinavia, US, Japan by K. Aro #1338



- 2463 SUNDRSTRÖM, Björn, Mäkkyläntie 42 B, SF-00370 Helsinki 37, Fin'ld  
Scandinavia by K. Aro #1338
- 2464 JENSEN, Peter, 41830 Majuba Hill Rd., Yarrow, B. C. V0X 2A0, Canada  
Scandinavia, Canada, New Zealand by K. Aro #1338
- 2465 HELGESEN, Paul W., 85 Willowbrook Ave., Stamford, CT 06902  
Scandinavia by E. Fraser #954
- 2466 HELBERG, Wesley A., 328 Caernarvon Rd., Wales, WI 53183  
Finland, U. S., Canal Zone by K. Aro #1338
- 2467 GRANT, Huntly W., 4710 26th Ave. S. E., Lacey, WA 98503  
Scandinavia, France, Canada, US by K. Aro #1338
- 2468 LÖHRICH, Wolfgang, Meerholzer Str. 33, D-6000 Frankfurt 61, West  
Germany — Pre-stamp Sweden, early covers by S. Hanson #974
- 2469 DAWSON, Douglas, 101 Hastings St., Staten Island, NY 10305  
Iceland by A. Silverstadt #1291
- 2470 ERIKSSON, Arne M. S., 2165 Chatterton Ave., Bronx, NY 10472  
Scandinavia by A. Silverstadt #1291
- 2471 COHEN, Arnold S., 7239 Bradford St., Philadelphia, PA 19149  
Scandinavia, except Finland by G. Koplowitz #925
- 2472 LAUGHLIN, Laurence, Box 2581, Palmer, AK 99645  
Sweden, US, Canada FDC by K. Aro #1338
- 2473 AMUNDSEN, Iver, Jr., 1431 8th Ave., Two Harbors, MN 55616  
Scandinavia by J. Frye #1031
- 2474 GERLE, Ellen C., 6040 Boulevard East, Apt. 17B, West New York, NJ  
07093 — USA, Scandinavia by A. Silverstadt #1291
- 2475 RUNFELDT, A. T., 362 Emerson Lane, Berkeley Heights, NJ 07922  
Scandinavia, NJ phil. history by A. Silverstadt #1291
- 2476 MUTCH, James H., 706 9th Street, Grundy Center, IA 50638  
Denmark, Sweden, Iceland, Greenland, Faroes by K. Aro #1338
- 2477 LUTHER, William T., 2018 Voorhees Ave., Brooklyn, NY 11235  
Iceland, Greenland, Scandinavia by K. Aro #1338
- 2478 OTT, John, 32 Birch St., Bloomfield, NJ 07003  
Scandinavia by K. Aro #1338
- 2479 THURMAN, Carl L., 3221-A Middlesex Dr., Toledo, OH 43606  
Norway, Scandinavia by K. Aro #1338
- 2480 PETERSON, Orville K., 462 Alpine Dr., Wilmington, NC 28403  
US, Denmark, Norway, Sweden by J. Frandsen #2297
- 2481 RUTTY, Patrick, RFD 1, Suncook, NH 03275  
Scandinavia, Finland, DWI by K. Aro #1338
- 2482 Oregon Stamp Society Library, P. O. Box 02121, Portland, OR 97202  
Philatelic literature in all areas by H. Peterson #965
- 2483 LA COUR, Oliver, P. O. Box 585, Bernardsville, NJ 07924  
Iceland, Greenland by K. Aro #1338

## NEW ADDRESSES

- 2138 ALBERTSON, Lawrence, 11 Autumn Ridge Rd., New Fairfield, CT 06810
- 1022 ARCH, Bradley J., 144 Hamilton Ave., Clifton, NJ 07011
- 2410 BOHL, John, 512 Smith Pyace, Ridgewood, NJ 07450
- 2272 BRISTOW, A. Mercer, 1621 Louanne Ct., Apt. E, Forest Hill, MD 21050
- 2184 ELDRUP, Ebbe, Stensvyvej 4, DK-2740 Skovlunde Denmark
- 588 LEIFSON, O. S., 714 Pamplona Ave., Davis, CA 95616
- 1895 HORN, J. Michael, P. O. Box 23664, San Diego, CA 92123
- 2342 TALBOT, J. G. Richard, P. O. Box 73, Station St. Martin, Laval, P. Q.,  
Canada H7V 3P4

- 2154 MCGREGOR, Chris, 808-1550 Alberni St., Vancouver, B.C., Can. V6G 1A5  
 1417 OMBERG, Robert E., 804 NE 40th St., Seattle, WA 98105  
 2435 CHRISTIANSEN, Larry, should be Broomfield, CO 80020 (not CA)  
 938 SORENSEN, Arnold, Newburgh, IN 47630 (not deliverable)  
 1198 DAUBERT, Lillian S., Toronto (moved, address unknown)  
 1898 PRICE, M. J., 41 High St., Hurstpierpoint, West Sussex, BN6 9TT Eng.  
 2447 DANAITIS, Rim, c/o Kativik School Board, Kuujjuaq (Fort Chimo)  
 Quebec J0M 1C0, Canada  
 1901 TASKINEN, Timo, 1329 Albatross Ave., Kitimat, B. C. V8C 1P9 Canada  
 1726 HANCHETT, Rodney L., 1578 Milbridge Dr., Chesterfield. MO 63017  
 2252 CARLSON, Charles R., 1541 Longwood, Norfolk, VA 23508  
 2026 KOSTØL, Carl-Otto, P. O. Box 151, N-4620 Vågsbygg, Norway  
 2129 BRIGGS, Carolyn Ruth, P. O. Box 9630, Madison, WI 53715  
 2205 CARPENTER, Kenneth Alan, P. O. Box 425, Houghton, MI 49931  
 2237 PEARSON, Benjamin E., 559 Midline Rd., Freeville, NY 13068  
 2259 ALBERT, Lise, P. O. Box 67, Plymouth, NH 03264

### DECEASED

- 98 HOYER, J., 5606 N. American St., Philadelphia, PA 19120

### CHANGE IN MEMBERSHIP STATUS

- H-18 BEERY, Wade H., P. O. Box 3781, Orlando, FL 32802 (was #1173)

### REINSTATEMENTS

- 1184 MAGNUSSON, Magni, P. O. Box 1264, Reykjavik, Iceland  
 Scandinavia by G. Sickels #1545  
 1290 RANTA, Arthur W., 27 Franklin St., Islip, NY 11751  
 Finland, Denmark by A. Silverstadt #1291

---

### S. C. C. OFFICERS

President — Alan Warren, P. O. Box 17124, Philadelphia, PA 19105

MART Manager — Wade H. Beery, Box 3781, Orlando, FL 32802

Librarian — S. H. Hanson, 4317 N. Monitor Ave., Chicago, IL 60634

Publicity Manager — M. D. Hunewell, 6831 Ardale Dr., St. Louis, MO 63123

Business Manager — Eric Roberts, 2763 N. Westfield Pl., Claremont, CA 91711

(All Advertising matters are handled by the Business Manager.)

### Associate Editors:

Chapter News—Paul A. Nelson, P. O. Box 57397, Los Angeles, CA 90057

Individual Countries' articles

Faroës and Denmark: M. D. Hunewell, 6831 Ardale Dr., St. Louis, MO 63123

Finland: M. E. Hvidonov, 4 Dwight Lane, Great Neck, L. I., NY 11024

Iceland: Barbara R. LeBlanc, 997 Alameda, Redwood City, CA 94061

Norway: Jared H. Richter, 1353 Plum St., San Diego, CA 92106.

Sweden: Gerald H. Grosso, 1131 Mitchell Ave., Post Orchard, WA 98366

D.W.I.: V. E. Engstrom, 2655 Pebble Beach Dr., Clearwater, FL 33519

# The easy way to collect Swedish stamps

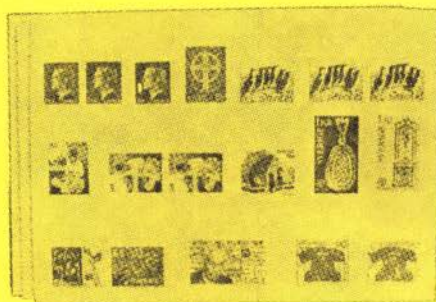
The Swedish Post Office, Stamps and Philatelic Service PFA,  
pampers American philatelists with a varied service and information.



An annual catalogue of all stamps, sets and postal stationery available at the time of publishing at the PFA. Your order is executed at no additional postage or delivery cost.



A subscription is the easiest way to get all new issues or FDC without missing any single item. Order your free copy of the full colour trilingual subscription booklet.



A Year set in a neat package, containing all the stamps and variants issued during a year, is an attractive gift and a good start for your collection.



"Information Sweden" is a trilingual circular sheet, which informs about each new stamp issue. 15-20 sheet issues are published annually. Subscription is free. Binder for holding "Information Sweden" is \$2 postpaid.

To the Philatelic Marketing Representative of the Swedish Postal Administration  
in the United States and Canada

PHILLIP F. ROBBINS, Suite 28, 445 Northern Blvd., Great Neck, NY 11021

Please send me your

- PFA Catalogue  
 Sweden, subscription booklet  
 Information Sweden



Name \_\_\_\_\_

Street \_\_\_\_\_

City \_\_\_\_\_

State \_\_\_\_\_ Zip \_\_\_\_\_

47  
38

## THINKING OF SELLING?

Collections come on the market for many reasons. Often a collector sells an area of lesser interest to finance new areas of collecting interests. Others are leaving the hobby entirely, and often collections come from executors of estates.

To those selling through our auctions, our terms to vendors are a commission of 10% of the gross realization. Consignments must total at least \$1000. There are no lotting, photographing, or insurance charges.

The vendors who consign material for sale in our auctions are always guaranteed of thoroughly researched lotting, extensive advertising both here and abroad, and an outstanding catalog presented to a very strong, international clientele.

We also buy for cash and this year have purchased numerous individual rarities and large collections in the mid to high five figure dollar range.

How may we serve you?



### DANAM STAMP COMPANY

Licensed & Bonded Auctioneers

800 Kings Highway North  
CHERRY HILL, NJ 08034

(609) 779-0779