



The  
**POSTHORN**  
TM

"The Bank of Scandinavian Philatelic Knowledge"



**An Ordinary 5p Serpentine Rouletted Pair?**  
*(See Page 3)*

---

OFFICIAL PUBLICATION OF THE SCANDINAVIAN COLLECTORS CLUB

---

Affiliate 79, American Philatelic Society

(USPS 603680, ISSN 0551-6817)



# Scandinavia

- Building fine collections for exhibition, research and enjoyment.
- Offering complete private treaty services for Scandinavian material.
- Providing over 100 titles of philatelic literature for the Scandinavian collector
- Specialized printing services and papers for exhibition pages and monographs.

Call toll-free 1-800-792-3505 ext. 579

The Scandinavian Specialist since 1973

**Jay Smith**

**P.O. Box 9639-SCC  
Madison, WI 53715**

February 1988



The  
**POSTHORN**

Official Publication of the  
SCANDINAVIAN COLLECTORS CLUB  
Published Quarterly

Copyright 1988 Scandinavian Collectors Club

---

Vol. 45, No. 1

Library Supplement

Whole No. 173

---

## **SCC Library Seeks Replacements For Missing Reference Materials**

SCC Librarian Dr. W. E. Melberg is asking everybody's help in replacing hundreds of missing items from the shelves of the SCC Reference Library, which is used extensively by all members. Most of the titles listed in this emergency supplement to *The Posthorn* were lost or destroyed in the 1986 Des Plaines, IL, flood, then the home of our library. Others are just missing from the collection.

As originally reported, the major loss was the Finnish reference material. Since then, quite a few books have been donated by individual members and organizations, not to mention the generosity of many dealers and publishers who have come to our aid during this crisis.

However, the full extent of the losses were not known until an exact inventory was conducted by Dr. Melberg and Ron Collin. This provided a detailed list by title and author. Surprisingly, the missing reference list includes many catalogs and miscellaneous items covering all countries — plus dozens of texts on Danish West Indies, Denmark, all Finnish material, Faroe Islands, Greenland, Iceland, Norway, Sweden, and some periodicals.

### **How to Donate**

Before mailing any books, donors are asked to write to the SCC Librarian. Send a description of the replacement items on the Missing Books List. This will give Dr. Melberg an opportunity to avoid duplications. A special postage fund has been authorized to pay the freight for weightier book mailings, especially from Scandinavian nations. Our Librarian can authorize reimbursements or pre-payments only prior to mailing.

Address correspondence to: Dr. W. E. Melberg  
SCC Librarian  
P.O. Box 134  
Allenton, WI 53002 - USA

## CATALOGS AND MISCELLANEOUS ITEMS

- A-6-D *Danmarks, Dansk Vestindiens, Slesvig & Islands Helsanger*, S. Ringström, 1967  
 A-7-D *Julemærke Katalog*, A/S Alsuma, 1972.  
 A-10-G *Die Private-, Eisenbahn-, und Dampfschiffsmarken von Skandinavien & Finnland*, Dr. O. Rommel, 1909.  
 A-24-E *Ocean Mails*, P. Cockrill, 1960.  
 A-25-S *Katalog Scando*, 1952.  
 A-26-E *Paquebot and Ship Letter Cancellations of the World 1894-1951*, M. Studd, 1953.  
 A-32-E *Five Northern Countries Pull Together*, V. Sletten.  
 A-33-FSE *Nordia 1975*.  
 A-40-N *De Drøbende Frimærker*, S. Tøgeby, 1942.  
 A-63-D *Katalog over Danmarks, Norges og Sverges Jernbane Frimærker*, 1970.  
 A-74-G *Kohl's Briefmarken Handbuch*, Vol. 6, 1909.  
 A-76-G *Kohl's Briefmarken Handbuch*, Vol. 12, 1909.  
 A-77-G *Kohl's Briefmarken Handbuch*, Vol. 13, 1909.  
 A-99-D 1. ZONE. *Katalogisering of Prislister Slesvig*, R. Bechsgaard, 1970.  
 A-100-E *The Complicated Stamps of Schleswig-Holstein*, Svend Yort, 1978.  
 A-103-S *Falska Frimarken*, S. Tullberg, 1947.  
 A-107-E *1976 Air Transport Label Catalog-Section R, Scandinavia*, W. D. Thomas.  
 A-109-I *Frimærkjafornun Lennslubok Fyrir Byrjendur*, Sigurdur H. Thorsteinsson, 1977.  
 A-110-E *The Paquebot Marks of Norway, Denmark, Finland and Sweden*, Edwin Dreschsel, 1977.  
 A-129-D *Nordisk Julemærke Katalog med Localmærker*, Dansk-Skaansk Forening.  
 A-130-SE *Luftpostens Historia i Norden, The History of Airmail in Scandinavia*, O. Luning, 1978.  
 A-153-E *Stamps of Sweden and Finland. The Early Issues*, Ernest H. Wise, 1975.  
 A-183-DE *Czeslaw Slania, Liv og Virke*, Ib Eichner-Larsen, 1981.  
 A-214-E *Catalog of Scandinavian Revenue Stamps, Vol. 1*, Paul Nelson, 1983.  
 A-246-D *Katalog over Danmarks, Norges & Sveriges, Jernbane Frimærker*, Nordisk Fil. Tid. Hand-book, 1910.  
 A-250-D *DK Frimærke og Møntkataloget med Grønland, Færoerne, Island (Kongeriget), DVI*, 1985.

## DANISH WEST INDIES

- C-29-E *The Bi-Colored Stamps of Denmark and Danish West Indies*, D. M. Collard (from *Gibbons Stamp Monthly*, Oct. 1976).

## DENMARK

- D-1-D *Udtag ad allengældende Kongelige befalinger Feltpostvæsenet vedkommende 1810*. (Reproduction).  
 D-2-D *Fra Generalpostdirecteuren Circulaire No. 2, 1851*, (Reproduction).  
 D-11-d-D *Volume 4: Danmarks 1905-1914 og Dansk-Vestindiens provisoriske Frimærker*, G. A. Hagemann, 1951.  
 D-22-D *Danmarks Islands og Dansk-Vestindiens Helsager*, A. Magius, 1922.  
 D-47-D *Danmarks Jernbanefrimærker 1865-1947*, R. Jensen, 1950.  
 D-63-D *Danmarks Postfærge Mærker*, Tom Plovst, 1962.  
 D-78-D *Bornholmske Poststempler*, R. King-Farlow and N. Hauberg (from *N.F.T.*, undated).  
 D-87-D *Ring and Star Cancellations*, A. Tholl (from *N.F.T.*, 1955).  
 D-90-DE *Fire Rigsbankskilling Pladning af Plade I*, H. Schønning and E. Paasesen, 1976.  
 D-102-D *Katalog Udarbejdet af R-Etikettstudiegruppen*, Danish Study Group, 1977.  
 D-115-G *Dänische Briefsammelstellen-Stempel (Pr. Stempel)*, E. Eitner (from Danish Study Group of GPC, 1978).  
 D-116-G *Zensurpost aus Danemark*, D. Mickel, (from Danish Study Group of GPC, 1978).  
 D-123-D *Danske Særstempler II*, E. Menne Larsen, 1978.  
 D-132-D *Ovalmatricetyper på 4 Skilling Tofarvet*, L. Nielsen, (from *Nordisk Fil. Tids.*, 1975).  
 D-134-D *Post og Telegraf Handbogen*, 1963.  
 D-144-E *The Postmarks of Denmark*, R. King Farlow (from *Nordisk Fil. Tid.*, 1947).  
 D-145-D *Fortegnelse over Stempelaftryk fra Danke Hjemmelfrankeringsmaskiner*, E. Ohlues and C. Larsen, 1938.  
 D-238-G *Dänische Schiffspost*, Henrik Eis and H. Hadler (from the Danish Study Group of GPS, 1984).  
 D-241-D *Nogletræk af Vestslesvigske Faslunds-Enklærs Administrativ og postale-stilling under krigen 1864*, E. Menne-Larsen (from *Posthistoric Meddel*, 1984).  
 D-242-D *Ovalfej på 8 Øre Takket 12½*, Børge Schäffer (from *Nordisk Fil. Tid.*, 1984).  
 D-244-D *Lidt on Kongelig Tjeneste Forsendelser Før, 1 April 1871*, Ole Maintz (from *Nordisk Fil. Tid.*, 1984).

- D-245-D Enkeit Maskinstempler: Paquebot anvendt af København K 1938, E. Menne-Larsen (from *Dansk Fil. Tid.*, 1984).  
 D-250-E *Velkommen to the Danish Windmill*, Elkhorn, Iowa 1977.

## FINLAND

- F-1-G *Finnland: I. Briefmarken. Helsingfors Frimarks Samlare Förening*, 1934.  
 F-2-G *Finnland: III. Helsingfors Stadtpost, Tammerfors Lokalpost, Helsingfors Frimarks Samlare Förening*, 1923.  
 F-3-E *The Revenue Stamps of Finland*, Dr. H. Olander, 1969.  
 F-4-E *Higgins and Gage Postal Stationery Catalog: Finland-Suomi*, 1971.  
 F-5-S *Finlands Ovalmarken*, L. Linder, 1956.  
 F-6-FGE *Suomen vanhimmatt paikkaakuntaleimat: The Early Postmarks of Finland: Die Fruhen Ortsstempel Finnlands*, Rolf Gummesson, M. Ossa, K-E Stenberg, 1974.  
 F-7-E *The Finnish Shipping Companies and Their Stamps*, G. W. Connell, 1972.  
 F-8-E *Postal Issues of Finland*, Carl E. Pelander, 1940.  
 F-9-S *Korrigerung av — och komplettering till — Kohl's Briefmarkenhandbuch 11. Auflage*, Finnland, E. Wahlsrtom, 1943; and, *Tillage till Hellsakskatalog, Upplaga 1923*, A. Stenroos, 1943.  
 F-10-S *Finlands Frankotecken av 1875*, G. Bjorkqvist (reprint from *NFT*, 1927).  
 F-11-G *Finnland II Ganzachen, Ausgabe*, Helsingfors Stamp Society, 1923.  
 F-13-FS *Suomen Postimerkkilijakalenteri: Finlands Frimarkssamlarkender*, 1945.  
 F-14-G *Die Postzensur in Finnland*, Hans G. Moxter, 1976, Handbook by Finnish Study Unit of PSG.  
 F-15-E *SP (small pikku) Finland Stamp Catalog*, J. Pami and H. Walli, 1947.  
 F-17-FE *Suomen Postimerkkien Vaarenteita*, Mikko Osso, 1977. (English translation by Mr. and Mrs. Michael Hvidonov.)  
 F-18-F *Erikoisluettelo 1949: Suomi, Karjala, Aunus and Inkeri*, J. Pami.  
 F-19-F *Erikoisluettelo 1945*.  
 F-20-F *Erikoisluettelo 1947*.  
 F-21-F *SP (small pikku) Finlands Stamps Catalog 1955*.  
 F-21-a-(FDNSGE) *SP Philatelic Dictionary*, J. Pami, 1948.  
 F-22-FGE *Catalog of Finnish Christmas and Charity Stamps; Suomen Joula-ja Hyvantekevaissymerkkiluette*, E. Hellman, 1947.  
 F-23-F *Suomen Leinamerkit: Lyhyt, Paatyypit Kasittava Luettelo*, E. Hellman, 1944.  
 F-24-FG *Vouden 1866 (1871) 10 pennin varivirhepainos: Der Faberfaht-Druck der 10 Penni Briefmarke von Jahre 1866 (1871)*, A. Fabrege and E. Hellman, 1939.  
 F-25-F *Kenttapaostikonttori "PS," R. Ahonius*, 1950.  
 F-26-F *Suomen Postimerkkien Kasikirjn: Vol. 1*, Finnish Philatelic Society, 1967.  
 F-27-F *Suomen Postimerkkien Kasikirjn: Vol. 2*, FPS, 1971.  
 F-28-F *Suomen Postimerkkien Kasikirjn: Vol. 3*, FPS, 1968.  
 F-29-F *Suomen Postimerkkien Kasikirjn: Vol. 4*, FPS, 1969.  
 F-30-F *Suomen Postimerkkien Kasikirjn: Vol. 5*, FPS, 1970.  
 F-31-F *Suomen Postimerkkien Kasikirjn: Vol. 6*; FPS, 1972.  
 F-33-FGE *Suomen Postileimojen Kasikirja II*, 1978.  
 F-34-FE *Norma Postimerkkiluettelo Stamp Catalogue*, 1978.  
 F-35-E *Finnish Oval Stamps*, Jaan Untveil, 1978.  
 F-37-G Finland. File of articles of various studies on stamps, postal history, cancels, postal stationery and watermarks, (from the Finnish Study Group of GPC, 1978).  
 F-39-E Mail Coveyance and delivery in Finland, Armus Uotila (from the *American Philatelist*, Feb. 1970).  
 F-40-E Finland's Arctic Circle Cancellation, Dr. Arthur Delaney (from *The American Philatelist*, June 1970).  
 F-41-F *Suomen Postileimogen Kasikirja II*, J. Olamo, 1978.  
 F-43-N Finland Posthistorie og Filateli, Øre Graham (from *Frim. Som Hobby*, 1980).  
 F-44-G *Feldpost in Finland*, H. G. Moxter, 1980.  
 F-45-G *Finnland. Fruhe Ortsstempel*, R. Gummesson, 1964.  
 F-46-E The Finnish Ship Cancels, E. Hellman (from the *American Philatelist*, 1949).  
 F-47-N Finland's Posthistorie og Filateli, Ørn Graham, (from *Frim. som Hobby*, 1981).  
 F-48-Du Finland, een paradij in Stempeland, Rene Hillesum (from *Het Noorderlicht*, 1981).  
 F-49-S *Finlands Figurestamper*, A. Lattinen (from *SPT*, 1981).  
 F-50-G *Franco — Franco Grasen*, D. A. Brombergard and W. Lohrich (from Finnish Study Unit, B.D.P. Ev, 1981).  
 F-51-E Finland Feather Covers, Rolf Gummesson (from *Collectors Club Philatelist*, 1982).  
 F-52-FS *Suomi Postimerkkiluerrlo #37*, 1973.  
 F-53-S Frankeringsetiketter Aven i Finland, (from *SFF*, 1982).  
 F-54-E European Classics — Finland, Edwin Mueller (from *Mercury Stamp Journal*, 1954).

*Notes*

**Display Rates for Ads in "The Posthorn":**

Full Page .....	\$60.00
Half Page .....	30.00
Quarter Page .....	15.00
Two or more full pages in same issue .....	\$50.00 per page

For special rates for covers contact:  
**H. J. "Pete" Schlueter, Business Manager**  
**P.O. Box 75281, Los Angeles, CA 90075**

- N-235-N Skip og Post Hamburg rute 1853-1865, Tore Gjeisvik (from *Norsk Fil. Tid.*, 1983).  
 N-237-N Perforeningen av Norges Frimerker Arne Tørud (from *Frim. Som Hobby*, 19873).  
 N-242-N Katalog "Sørland 82" June 1982.  
 N-304-N *Norske Skipsstempler og Reisende Post-Ekspeditioner, 1984.*  
 N-305-N *Filatelistisk Årbok* Norskfilatelistforbund, 1985.

## SWEDEN

- S-9-S *Postryttaren: Postmusei Vänners' Årsbok 1950.*  
 S-27-S *Postryttaren: Postmusei Årsbok 1976.*  
 S-33-E *Catalog of the Postage Stamps of Sweden, Specialized, 1855-1948, Harry Wennberg, 1948.*  
 S-47-S *Specialkatalog över Sveriges Frimärken och Helsaker 1973, Swedish Philatelic Society.*  
 S-50-S *Specialkatalog över Sveriges Frimärken och Helsaker 1970, SPS.*  
 S-55-G *Die Schwedischen Postgebühren 1636-1976, Wolfgang Lohrich (Handbook by Swedish study group of GPS, 1976).*  
 S-57-S *Postryttaren Postmusei Års Bok 1976.*  
 S-58-E (Article on Swedish Stamps of 1855-72), Thomas Bjaringer (from *The London Philatelist*, 1977).  
 S-59-S *SFF Specialkatalog 1977-78.*  
 S-60-S *SFF Specialkatalog 1974-75.*  
 S-61-S *SFF Specialkatalog 1975-76.*  
 S-62-S *The Swedish Exhibition Collection Svenska Post Musei, 1974.*  
 S-67-S *De Svenska FN Forbandens Militärpoststamplar, T. Calleras, 1966.*  
 S-67-a-E *Catalog of the Swedish UN-Military Mail Cancellations, T. Calleras, undated.*  
 S-70-SG *Albatrossposten 1915-1918, B. Wallberg, undated.*  
 S-71-S *Ångbatspost, D. MacFie, 1977.*  
 S-77-S *Postryttaren, Postmusei Årsbok, 1978.*  
 S-79-E *Swedish Booklets, Royal Swedish Post Office, 1979.*  
 S-86-S *Postryttaren Post Musei Årsbok 1964.*  
 S-97-S *Samlingsregister över Artikler i Postryttaren, Årg. 1-20, 1950 to 1970.*  
 S-99-S *Postryttaren Postmusei Årsbok 1979.*  
 S-100-S *SFF Specialkatalog 1966.*  
 S-101-S *SFF Specialkatalog 1969.*  
 S-102-S *SFF Specialkatalog 1972.*  
 S-103-S *Priskatalog över Svenska Post — och Maluleringstamplar, 1959.*  
 S-105-E Sweden, The Skilling Banco Issues, L. H. Stone and T. Biaringer (from *American Philatelist*, 1980).  
 S-106-S *SFF Special Katalog 1980-81.*  
 S-107-E *Den Svenska FN Bataljonen i Libanon och des postala forbindelser, N. Mellander (from *Norsk Fil. Tid.*, 1978).*  
 S-108-E How can one differentiate between booklet covers printed by offset and by letterpress? Y. Hamnerius (from *SFT*, 1977).  
 S-109-SE *Faltpost Kontoret vid Svenska FN Bataljonen i Mellerstå Ostern, N. Mellander (from *SFT*, 1976).*  
 S-180-E *Swedish Perfins, A. D. Peterson (A translation of Svenska Skyddsperforeringar, 1984).*  
 S-200-G *Die Geschlechter Schwedischen Greg und Austauschpostamplern, Wolfgang Lohrich (from Swedish Study Group of GPS, 1983).*  
 S-207-S *Postryttaren Postmusei 1985 Yearbook.*

- F-57-N Finland's Posthistorie og Filатели, Ørn Graham (from *Frim. Som Hobby*, 1982).  
 F-58-G *Finnland Feldpost, Finland Field Post*, Hans G. Moxter, 1978.  
 F-60-F *Cancellations of the Finnish Postal Stopping Part 2. Places Part 3*. K. Hirvikoski, 1980.  
 F-62-G *Wissenswertes Über Finnische Gantzachen*, Dr. G. Prade (from Finnish Study Group B.D.P. Ev., 1982).  
 F-68-F *Norma - Postimerkkiluettelo Stamp Catalog 1980*.  
 F-69-S Om Finske Makulerings Stampler, Jouka Nousiaianen (from *SFF*, 1983).  
 F-71-E The Local Issues of Finland, Denwood N. Kelly, Jr. (from *Weekly Phil. Gossip*, 1940).  
 F-72-E More Finland Feather Covers, Rolf Gummesson (from *Collectors Club Philatelist*, 1983).  
 F-78-F *Suomen Postimerkkien Käsikirja #VII, 1969 to 1978*.  
 F-82-F *Abophil 1983*.  
 F-94-F *Suomen-Vanhimmat Paikuntalemat-Postmarks of Finland*, R. Gummesson, M. Ossa and K. Stenberg, 1974.  
 F-95-F *Suomi Filatietien Aarreata*, M. Ossa, 1971.  
 F-96-F *Suomen Postimerkkien Väärenteita*, M. Ossa, 1977, (with translation by Mike Hvidonov).  
 F-99-E *Railway Post offices of Finland*, Cyril Kidd (from *ITPO*, 1984).  
 F-100-S *Forwarding Agents*, D. A. Dronberg (from Finland's Philatelist Forbund, 1985).

#### FAROE ISLANDS AND GREENLAND

- G-85-D *Greenland*, A set of 18 postal history handbooks. (undated)

#### ICELAND

- I-1-E *Postal Service in Iceland, 1776-1951*. P&T Admin., 1951.  
 I-17-IEGD *Ordabok Frimerkjasafnara*, Sigurdur H. Thorsteinnsson, 1964.  
 I-37-E *One Hundred Years of Icelandic Stamps*. J. A. Johnson, 1977.  
 I-41-G *Kohl's Briefmarken Handbuch, 1876-1935*, Dr. Herbert Munk.  
 I-71-E Iceland Stamps overprinted for fiscal use, H. E. Tester (from *The Cinderella Philatelist*, 1972).  
 I-73-G *Ein Ausflug zu den Faroer und welter nach Island um 1870*, (from the Iceland Study Group B.D.P. Ev., 1981).  
 I-81-I *Felag Frimerkjasafnara 25 Ára, 1982*, (from Icelandic Phil. Society).  
 I-97-G *Island 6 aur Ovalausgabe*, Orla Nielsen (from Icelandic Study Group B.D.P.Ev., 1982).

#### NORWAY

- N-11-E Norway, 1 Øre Deep Olive-Brown 1886-89, 20mm type, B. Goodfellow (from *Philatelic Journal of Great Britain*, 1925), Reprint.  
 N-17-N *Dirigeringslister for post fra Norge til utlandet, 1949*.  
 N-21-N *Norges Byposter og annen Norsk Lokalpost*, Carl Pihl, 1963.  
 N-85-N *Fortegnelse over Postempler Med "Kronet Posthorn"*, B. E. Bunæs, 1976.  
 N-129-G *Die Østfoldbahn*, J. Tiemwer, 1980.  
 N-131-E *British Field post Offices in Norway, 14 April-8 June 1940*, D. D. Cornelius, 1973.  
 N-138-N *Marinens Posttjeneste 1940-45 and Norsk Eksilpost 1940-45, Hanelstlaten*, K. Sanne, (from *Norsk Fil. Tid.*, 1974).  
 N-143-N De Norsk poststempler før Frimerketiden "Prefilateli Katalogen," T. Ahlstrom and F. C. Moldenhauer, Jr. (from *Norsk Fil. Tid.*, 1963).  
 N-144-N Platekukken for de eldre Norske Frimerkbloktrykke, C. A. Werenskiold (from *Norsk Fil. Tid.*, 1961).  
 N-145-N Norges Byposter og annen Norsk Localpost, C. Pihl (from *Norsk Fil. Tid.*, 1963).  
 N-147-N Konstante Platefepil på Portomerk, J. Jensen (from *Norsk Fil. Tid.*, 1962).  
 N-149-N *Utgaven 1877-1878 Øre Merke Med Skravert Posthorn*, A. Bernitsen, 1962.  
 N-159-N *Katalog over Ukast og Provetrykk til Norges Frimerker*, J. Jellestad, 1941.  
 N-166-E The Stamps of Norway June 1872-75 Skilling Values, Posthorn Type, J. Jellestad (from *Phil. Journal of G.B.*, 1924).  
 N-180-Du *Noorwegen: Schijnwerper Opde "Off Sak" Zegelo*, J. A. Konigs, 1981.  
 N-181-G *Über Die Eismeerfahrt: Roald Amundsen's Jurgen Tiemer*, (from the Norwegian Study Unit of B.D.P.Ev., 1975).  
 N-182-G *Das Nowegische Seepostwesen in Seinen Anfabgen*, Kuhlman (from the Norwegian Study Unit of B.D.P.Ev., 1981).  
 N-187-E *The Introduction of Postmarking Machines to Norway*, F. H. Brofos, 1981.  
 N-197-N Norsk Dampskibspost på Mjose, A Tørud (from *Frim. Som Hobby*, 1981).  
 N-207-N *Tysk Feltpost — Sør Norge, Abschnitt Stavanger — 1940-45*, T. Larson-Fedde, 1981.  
 N-230-E The Stamps of Norway. 1894-1900 Issues, J. Jellestad (from *Phil. Journal of G.B.*, 1924).  
 N-231-G *Die Überwachung Des Auslandsbrief-verkehrs während des II*, Karl-Heinze Riemer, 1979.





The  
**POSTHORN**

Official Publication of the  
SCANDINAVIAN COLLECTORS CLUB  
Published Quarterly  
Copyright 1988 Scandinavian Collectors Club

Vol. 45, No. 1

February 1988

Whole No. 173

## Table of Contents

An Ordinary 5 Penni Serpentine Roulette Pair? .....	Page 3
Agathon Faberge Fled to Finland .....	Page 7
What's Happening in Finland .....	Page 9
Attending an International with Press Pass .....	Page 12
SESCAL Chooses Hyatt at LAX .....	Page 18
Two Recently Discovered 4 RBS FDC's .....	Page 19
171 Nordic Entries Win Medals .....	Page 22
Another Dane Renews Seals Tradition on Islands .....	Page 27
Modern Plate Faults on Finnish Issues .....	Page 30
SCC Chapter 13 Delaware - 21st Annual Auction .....	Page 31
Scandinavian Literature Notes .....	Page 35
Cancel Clinic .....	Page 37
Transfers & Reentries .....	Page 39
Hobøll's Granddaughter Claims She's the Original .....	Page 40
SPF Update .....	Page 41
Scandinavian Area Awards .....	Page 42
Sweden — A Mystery Cover .....	Page 42
von Wowern Reprimands Author for Tactics .....	Page 43
Here's an Auction Report with Something for Every Collector .....	Page 45
New Issues .....	Page 49
President's Message .....	Page 53
Editor's Notebook .....	Page 54
Group Flight to FINLANDIA for Members .....	Page 54
SCC Three-Nation FDC Cachet Offer .....	Page 55
Chapter News .....	Page 56
Library News .....	Page 56
Executive Secretary Speaks .....	Page 60
Membership Report .....	Page 61
Member-to-Member Ads .....	Page 64

**DEADLINE FOR NEXT ISSUE: MARCH 31, 1988**

**Editor:** Gene Lesney  
858 Howe Drive, Salinas, CA 93907  
Phone: (408) 758-1507

**Executive Secretary:** William H. Lamkin  
P.O. Box 302, Lawrenceville, GA 30246

**Business Manager (Advertising):**  
H.J. "Pete" Schlueter, P.O. Box 75281  
Los Angeles, CA 90075

THE POSTHORN (ISSN 0551-6817) is published quarterly by The Scandinavian Collectors Club. Membership, including subscription, \$10 per year. Contact Executive Secretary for membership & change of address. Advertising rates & terms available from Business Manager. Second class postage paid at Madrid, Iowa 50156. Copyright 1988 by The Scandinavian Collectors Club.

POSTMASTER: Send Form 3579 to THE POSTHORN, Box 302, Lawrenceville, GA 30246.

## Do you collect stamps or covers from **NORWAY**

Every year we have a turnover concerning Norwegian philatelic material bigger than any dealer or auction house in the world! Our main activity is auctions, and in this field we are one of the leading firms in Scandinavia.



4 skilling Coat of Arms with manuscript cancellation from the famous steampship "Constitutionen." Sold for Nkr 72.000, (ca. \$9,000) in our auction in Oslo October 15, 1983.

Our auctions also include fine objects from most other countries (Scandinavia, England, Br. Commonwealth, Western Europe, USA, Canada). We are always searching for better material for future auctions, or give an offer buying for cash.

We also issue Lists with special offers priced from \$5 to \$3000. A copy of our latest List as well as the next auction catalogue will be sent free on request.



Elisenbergveien 19 ☎(02)441914  
PO Box 3088, Elisenberg Oslo 2

NORWAY

## An Ordinary 5 Penni Serpentine Roulette Pair?



Figure 1

*Offered and acquired as an ordinary but very attractive item, closer examination uncovers the makings of an unsolved philatelic mystery —*

By Ed Fraser

After acquiring an attractive item like the pair<sup>1</sup> shown above (Fig. 1), it seemed very natural to re-read the reference information relating to the period in general, and the issue in particular. The results were quite unexpected and unexplainable, especially after examining a photo on page 53 of *The Serpentine Rouletted Stamps of Finland — Issues of 1860 and 1866* (translated by Kauko Aro from *Volumes I and II of the Finnish Handbook*<sup>2</sup> and published by the Scandinavian Philatelic Foundation in 1983). The photo on page 53 is copied here as Fig. 2.<sup>3</sup>

Noting that the ex-Ludvig Lindberg stamps in Figure 2 are canceled at Kristinestad on 14 Sept. 1870, the same date as the pair in Figure 1, further examination seemed in order. A point-by-point comparison between the 5 penni pairs in Figures 1 and 2 suggests that they are one and the same! This was possibly an unlikely coincidence, but there appears to be an explanation. In the *Handbook*, alongside the Figure 2 photo, is some lengthy text that concludes that this piece of a letter was later mutilated by soaking-off the normal pair which was illustrated in a 1960 Frimärkshuset auction catalog. This statement — perhaps because it seemed too unbelievable to me — didn't register as an announcement that the two pairs had got-

ten separated from each other, and that the normal pair was "lost!"

The story goes further, because in some ways the ex-Lindberg piece was perhaps the most interesting 10 penni color error known, since the two pairs had actually formed a block of four in the error sheet, as shown in Figure 3, by fitting together the pairs presented as a strip of four in Fig. 2.

This is illustrated in the *Handbook* on page 51 [page 29 in the original Finnish edition] where a photograph of the piece has been cut and repositioned to indicate that the stamps actually had made up a block of four from the sheet's lower left corner (positions 31-32, 41-42),<sup>4</sup> <sup>5</sup> And, what an extraordinary block! An inverted 10 penni color error and an inverted 5 penni se-tenant vertically that also forms tete-beche horizontal pairs. This block is an important item of evidence to help confirm the location of the color error and the upside-down cliches, as shown in Figure 4.

I have no idea what path this normal pair took after leaving the Frimärkshuset auction in 1960, but it quite apparently lost its pedigree and circulated as just an ordinary pair until being recently rediscovered. Yet it still remains just an ordinary pair, although it might better be described as being "close to rarity."

The deliberate separation of this unique "block" has to represent some kind of high point in philatelic vandalism, but at least its rediscovery provides a good fitting tale — with the moral that you never know what you might find by looking and reading!

Footnotes:

1. Collectors who have not seen Finnish serpentine rouletted pairs please note that the teeth "interlock," so without looking carefully, any pair looks "imperf between," which is not the case. Some "imperf between" serpentine roulette pairs exist, but this is not the situation here.
2. The *Handbook* referred to here is actually entitled *Suomen Postimerkkien Käsikirja, Vol. II, 1971*.
3. I am not aware of any covers where the sender didn't count the 10 penni color error as only a 5 stamp.
4. The *Handbook* includes some plating information that is consistent with the pair in Figure 1 being from cliches 32 and 42. Since the handbook does not give very good plating details for the sheet, and



Fig. 2 — Example of the 10 penni color error on piece to make up a 20 penni rate (4x5 penni) — a typical usage for 5 penni stamps — also canceled "KRISTINESTAD 14.9.1870." This on-piece strip of four is actually two pairs, and is from the Ludvig Lindberg Collection. (The roulettes are very faint in places due to lack of contrast in the photo.)



Fig. 3 — This composite photo of the two pairs indicates how the 10-penni color error was actually positioned in the 5-penni sheet, forming a block of four. Although unclear in the recopied photo above, there appears to be a perfect “fit” of the interlocking roulettes between the two pairs to confirm the ex-Lindberg pairs had been originally a block of four!

there are no known sheets to photograph for reference, the “fit” of the serpentine roulettes is very meaningful to visibly confirm that the 10-penni color error was in Pos. 31, and did form a block of four with Pos. 32, 41 and 42.

5. I have written several general articles about the color errors that have appeared in *The Posthorn*, and which might be interesting for reference:
  - Feb. 1984, pages 7-15: “The 10 Penni Color Error Forgeries,” and pages 39-43: “The Fascinating Story of the 5 and 10 Penni Serpentine Roulette Colors rros.”
  - May 1984, pages 108-110: Two Interesting Covers Concerning the 10 Penni Color Error (The Fig. 2 illustration was erroneously printed upside-down).

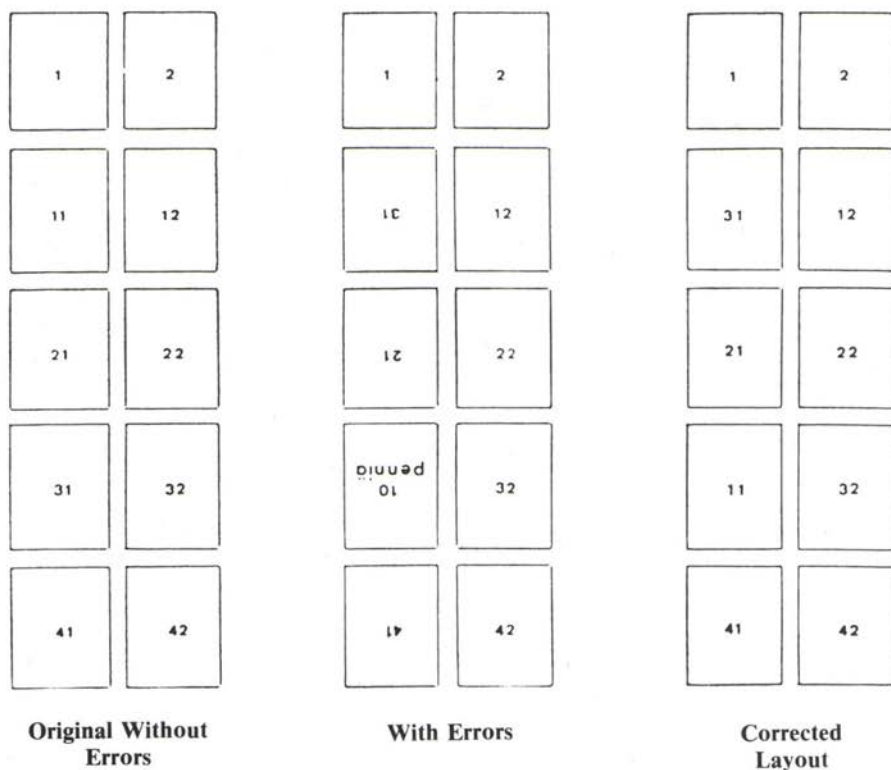


Figure 4.

Diagram of the changes in the left margins stamps of the 5 penni sheet printed using 50 cliches. Each group is numbered properly for a sheet of five rows of ten columns from left to right under rules of the Philatelists' Numbering Convention.

Comments appreciated: Ed Fraser, 2 Broadway-9th Floor, c/o Shearson, New York, NY 10004.

\* S \* C \* C \*

## FINLAND MAIL SALES

Please ask my next sale catalogue. Text also in English.

**JUHANI KAKKINEN**  
SF-81770 Tiensuu  
Finland



The Agathon Faberge mini sheet features his rare Finnish classics and portrait on the center FM5.00 stamp. Note the Faberge Easter Egg on the upper right selvage.

## Agathon Faberge Fled to Finland With Fabulous Classic Collection

Historians may not agree, but the unique chain of events which occurred as a result of the 1917 Russian Revolution created one of the world's foremost philatelists in the person of Agathon Faberge, born in 1876 the second son of the czarist jeweler Peter Carl Faberge. Educated to follow his father in the family business in St. Petersburg, Agathon was destined to be a collector.

In his youth he learned about stamps from the German-Russian philatelist Friedrich Breitfuss (1850-1911), who also resided in St. Petersburg. By the 1860s, Breitfuss was already considered one of the world's leading stamp specialists.

As Agathon grew up with unlimited wealth at his command, he developed into a collector of all varieties of objects d'art, including stamps. His appetite for acquiring things appeared insatiable. A fortunate coincidence made him the owner of two wagon loads of philatelic materials when the international Sterky firm in St. Petersburg sold its archives containing an accumulation of foreign correspondence. One can only speculate what was among these old business letters.

### He Became His Own Expert

He proved to be an eccentric with his stamps, spending many hours studying and sorting his collection; often making faint pencil notations on the backs for future reference. (Even today some ex-Faberge stamps carry his coded scribbling as marks of authenticity.) Although he collected Finnish and Russian stamps as well as those of several small German and Italian states, Agathon also took a particular interest in such areas as Russian Zemstvo stamps, Russian mail in the Levant, China and Poland, etc.

Agathon had been living close to the Finnish border at Levashovo during the time of the 1917 October Revolution, which had played havoc with the Faberge family's jewelry business in St. Petersburg. He was arrested several times and imprisoned for several years. After once refusing the task, Agathon in failing health in prison accepted Leo Tolstoy's official request to evaluate the czarist crown jewels in the

Kremlin. He had inventoried the collection for Czar Nicholas early in the revolutionary uprisings and was the natural choice for the job.

Released in 1921, Agathon completed the job and was permitted to reside in St. Petersburg where he remarried and had his only son, Oleg, who was born in 1923. Not much is known about Agathon's financial circumstances during this turbulent period. However, he had somehow managed to retain remnants of his collection of objects d'art and most of his stamps. He made repeated attempts to legally exit the Soviet Union to Finland with his possessions. These efforts are well documented.

### Sold What He Couldn't Carry

Allegedly, Agathon quietly disposed of his heavier objects d'art and shrewdly invested in stamps. (So many tales of this man's eccentricities survive to this day, that a thread of truth must be the substance.) It's a fact that during this period in St. Petersburg Agathon was an active buyer of rare stamps. When buying for his Finnish collection, he had a competitor in Ludvig Lindberg, a Swede living there. (*In 1928 Lindberg's holdings were sold at auction in Lucerne, Switzerland, giving Agathon the opportunity of acquiring the best items from this collection.*)

The Faberge scion continued his efforts to leave the Soviet Union. While his family was being blocked in legal attempts, friends came to his aid and managed to get most of his best stamps across the border into Finland. It wasn't until 1927 that Agathon and his family escaped by crossing over the ice of the Gulf of Finland in four push sleds with only the barest essentials.

They lived quietly in Helsinki and Agathon eventually joined the philatelic societies. His fellow collectors persuaded him to exhibit in 1928 when he showed — for the first time — 11 frames bearing the following titles: Finnish Rarities, Entires — Reprints; Russia No. 1, Cancellations, Proofs, Entires, Rarities; The Levant and Further; Poland No. 1 and Entires. The quality of these items attracted attention even then. He had sensational material and Agathon was talked into preparing a more extensive collection for the 1933 WIPA Exhibition in Vienna.

The WIPA exhibit by Faberge received a fabulous response from philatelic experts around the world; which also brought out well-wishers and charlatans. For some time he had expressed wishes that his collections would one day belong to a big museum where everyone could view them. A gentleman of questionable motives convinced him to send his holdings to England after the WIPA show — with a vague promise that it would be purchased for the British Museum when a suitable financier was found.

However, the lengthy negotiations dragged on until the beginning of World War II and nothing had been resolved. Faberge requested the return of his stamps but they could not be sent. At this time Finland was involved in its Winter War against the USSR and Europe was being ravaged by Nazi Germany. And there were other problems to be resolved in repayment of cash advances taken by Faberge.

### Wiped Out by Default

Despite Faberge's desperate attempts to recover his collections, even by sending more stamps to England, the loss was inevitable. Through a series of complicated circumstances all of his material was sold at auction by Harmers, who reportedly acted upon legal court orders. To give some idea of the vast amount of philatelic material involved, it should be mentioned that it took four separate auctions and four equal-size catalogs were printed.

Just as important was the timing. Europe was at war! And where were the bidders? The Finland catalog alone offered 79 lots of ovals from pairs to blocks of six



and a letter with four pairs of 5 kop. ovals — something never seen before. This and the other three auction catalogs are available and speak for themselves. Unfortunately the sale was held in wartime when other more important matters had an adverse affect on the bidding.

Not too much is known about the realizations of the sales, nor the principal buyers. It was public knowledge, however, that the gems of Faberge's Russia collection went to the English nobleman who was one of the lenders claiming a lien against the stamps held in England.

Some knowledgeable philatelists estimate that some 80 percent of all classic Finnish and Russian material passed through Faberge's hands at one time or another. With his expert approach to stamps, Faberge had in 1932-33 started to publish on a small scale. He wrote three papers on "Die Ovalmarken von Finnland." But after the setback of the Harmer auction which netted him not one cent, Faberge was a broken man. His trust in the honesty of his fellow men was damaged beyond repair.

Agathon Faberge died in Helsinki on Oct. 10, 1951, and was buried in the Orthodox cemetery there. He had spent his last years quietly, a retiring and disappointed man.

His son Oleg inherited an interest in collecting stamps and has made Imperial Russia and Zemstvo philately his specialty. He is one of the world's foremost experts on these stamps today.

\* S \* C \* C \*



## What's Happening in Finland

By Mike Hvidonov

### FINLANDIA 88

More than 1000 exhibitors worldwide sought space for this epic event which has a limit of 750 competitive entries. Ninety-six applications came from the U.S. Regrettably, not all requests could be honored. Exhibit vice president Kari Rahiala has announced that "80-plus" of the American entries have already been accepted. He added that another 30 collections are coming from the Soviet Union. (I hope they include some wonderful, never-shown-before items — possibly ex-Faberge.)

Among the acceptances will be 180 international gold medal exhibits, 50 of which took large golds (17 from the U.S.) in the competitive categories. Also to be shown will be thematics and maxi-cards to comply with FIP rules requiring that at least 20 percent of the frames feature exhibits never-before displayed at international competitions. The other FIP rule to be introduced at FINLANDIA 88 will be the jury's mandatory use of the point system for evaluating entries.

One Finnish innovation, however, will be the allocation of 120 extra frames for a special class of revenues. These will be apportioned to achieve a varied selection of the world's revenue stamp exhibits.

By now, I believe all acceptances have been advised. Finnish hospitality will provide many hours of social and philatelic joy at FINLANDIA 88, be assured. So COME!

### Expensive Pair Sold

The 10 kop. tete-beche pair from the Nordenskold Family correspondence that surfaced in Sweden last year has allegedly been sold to a foreign buyer. Originally offered for SK800,000 (\$126,984), *ABOPHIL*'s source was unable to confirm the final selling price. However, editor emeritus Mikko Ossa commented that, "This splendid item could not sell much below this price."

### Inept Auction House

A Stockholm auction facility (Sept. 1987 sale) presented a 40p. Roulette I 1866 stamp (with a small tear) at a base price of SK2,000 (\$317). It proved that this stamp was not from the first printing, but from the 1873 printing with a book value of only 10 percent of the suggested base. If this were not bad enough, the same sale featured a 10 Mark 1889 stamp on letter, bearing a BORGÅ, Jan. 14, 1901, cancellation. The descriptive text stated, "last day of usage," Facit CV SK35,000 (\$5,555); base price SK7,500 (\$1,190). This dreadfully overfranked item can be valued only as a "tied-to-piece" stamp; and if purchased at all, worth a mere 10 percent of the suggested price. Such an item cannot be exhibited because it has been contrived.

My personal comment: this auction house is very incompetent. It's bad enough when dealers and auction houses outside of Europe err so badly . . . but in Sweden? Oh, I must mention that the questionable 10 Mk. letter also had a Swedish certificate of authenticity!

### Modern Printing Error

Though modern printing errors are not prevalent, a three-sided imperforate has come to market according to *ABOPHIL*. The error occurs in the 1968 stamp honoring the Finnish composer Oskar Merikanto (Norma 668, 0.40 value). The report says that two full sheets got through inspection with the imperf error. This would be nice on letter. Check your mail!

### Czech-Finno Dictionary

A 48-page, self cover lexicon of basic philatelic words has been prepared and published by Dr. Andrej of the Czech SCC and introduced in their publication *ZPRAVDAJ*. Briefly, the contents run as follows: pages 5-17 list the Finnish words with the Czech equivalents, pages 18-25 has the Czech words with Finnish, English and German in successive columns.

With a little effort anyone can devise a work-a-day collector's lexicon for Finnish-English or vice versa. Cost of the booklet is about \$6.50 airmail. Please note that personal checks suffer an additional bank penalty of about \$2.50 abroad. This extra charge isn't included in the \$6.50 price. Order from: The Finnish Czechoslovakian Society, Sepänkatu 15 C 52, Helsinki 00150, Finland. More details about our Czech counterpart in Europe can be obtained by writing to: The PRAHA Scandinavian Collectors Club, Attn: Jan Miculcak, Kalinova 7, 1300 Praha 3, Czechoslovakia.

Credit *Philatelia Fennica*, which emanates from Helsinki, for the report on the new lexicon. This publication has re-vamped its format and is now starting to provide improved content and information. We, as usual, are indebted to both *ABOPHIL* and the latter for providing us with "wire services" which in turn keep our readers informed.

## **G. F. Frimærker**

### **Stamps and Postal History of Greenland and The Faroe Islands**

G. F. Frimærker is a specialized mail order company trading exclusively in stamps and postal history of Greenland and the Faroe Islands.

G. F. Frimærker has provided a great number of rare and elusive items from these two territories, and for the past 40 years has helped build award winning collections. Its latest prize was a gold at HAFNIA 87 for a fine collection of Greenland postal history and pakke-porto stamps.

The company conducts two auction sales each year in March and October. Catalogues for these auctions are in English and are issued on February 1st and September 1st. More than 1,000 lots of Greenland and Faroes material are offered at each auction. Ask for your free copy of the next auction catalogue.

The company also produces a detailed price list covering the less expensive items. It is in English, although prices are in Danish Kroner, and is yours for the asking.

New Price List is now available.

G. F. Frimærker publishes the GF Catalogues, the definitive works for these territories. The catalogues contain detailed information in English about the philately of Greenland and the Faroe Islands.

G. F. Frimærker is owned and operated by Ester and Eric V. Wowerm who will personally attend to your enquiry or order.

*It will be nice to hear from you!*

## **G. F. Frimærker**

Floradalen 31 – 2830 Virum  
DENMARK

**International Telephone + 45 2 85 20 75**



Her Majesty Queen Margrethe II, patroness of the show, was given a royal tour of the Court of Honor by Knud Mohr (right), president, and Henrik Eis (center), secretary general. Mohr is also president of Denmark's Filatelist Forbund. Here they are discussing stamps featuring Queen Mother Ingrid.

## Attending an International with Press Pass Offers a Colorful Perspective of Events

*(Almost every SCC member has attended a stamp exhibit, which are generically alike in many aspects. So this report will focus on the backstage events usually not open to the general public.)*

**By The Editor**



Every show has its statistics. Attendance during this 10-day event at Bella Center near Copenhagen topped 40,000, slightly less than at Hafnia 76. A total of 650 exhibits were shown in the competitive class — 186 of Scandinavian interest — and of these, 171 won medals. There were 106 dealers with bourse tables, 33 foreign post offices (including Red China), and an assorted dozen of catalog and supply dealers.

Awards are listed in another article. Worth a mention here was the silver medal won by *The Posthorn* for 1986 under Joe Frye's editorship. A silver-bronze went to our British cousins for the SPS's *Scandinavian Contact*.

Things started with a press conference Oct. 16 at 9 a.m. (three hours before Hafnia 87 doors opened to the public). P.R. Manager Ib Eichner-Larsen told everybody

what to expect, but gave only a hint of the hectic pace of activities slated for the next nine days. This session concluded with an offering of Gammel Dansk, buttered rolls, cheese, coffee, wienerbrød and "local" beers. The snack was a taste for the series of buffets and dinners to come.

### Active Press Center & Bar

The Press Center, located just off the main floor, offered an ID badge and a press kit full of philatelic goodies and press releases about Hafnia 87. In addition to typewriters, telex machines and other necessary facilities was a self-serve beer and soft drink bar that proved very popular. Coffee was also available. Daily briefings by Ib Larsen kept us abreast of events — and offered opportunities for interviews of various personalities in the stamp world.

Almost 60 members of the international philatelic press (some with questionable credentials) showed up, twice the anticipated number. Facilities were often crowded, but the beer never ran out! This also restricted the number of invitations for assorted receptions and dinners. But my presscard #3, or the SCC, somehow made the "A" list — which became a factor as this report continues.

It should be noted that English was the language of Hafnia. Nearly every event was conducted in our language; and nearly everyone spoke English. For the uninitiated, Hafnia is Latin for Copenhagen — and also the trade name of Denmark's largest insurance company.

Beginning on day one, the press briefings also offered additional freebies, usually keyed to each day's official cancel. The first was Welcome to Hafnia 87 Day. Introduced were the daughter and granddaughter of Danish postmaster Einar Holbøll, who brought the first Christmas seal to the world in 1903. A souvenir sheetlet of the 1948 seal and the first U.S. West Indies Christmas Seal sheet were handed out, along with news releases.



Endless rows of exhibits were well illuminated.

Then began my four-day review of all 186 Scandinavian-related entries on display throughout Bella Center, with floor space equal to about five football fields. It was a slow process but rewarding when I met exhibitors "nervously patrolling their entries" every-ready to answer questions. Our readers will meet some as writers in future issues of this journal.

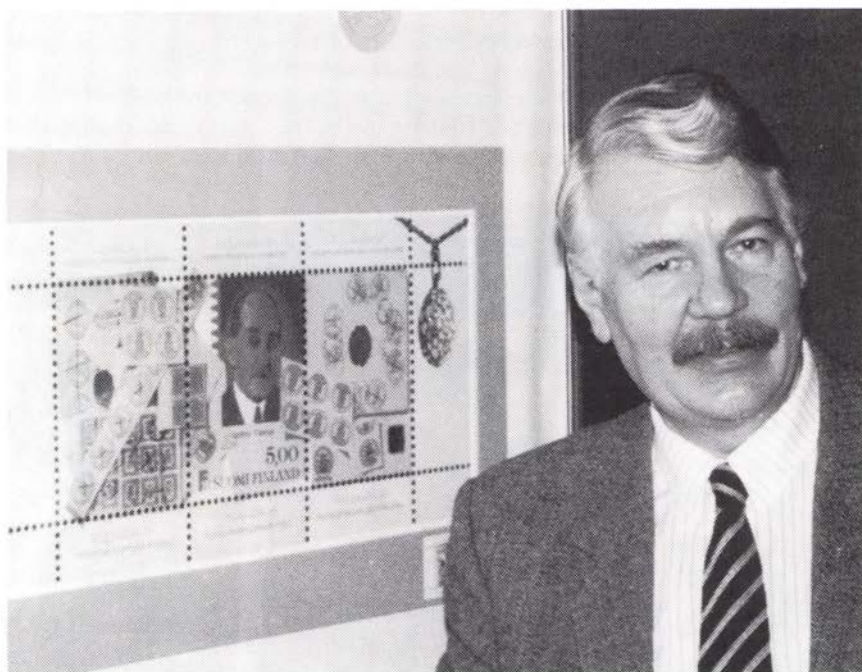
### Back to Work

Saturday, Oct. 17, was Greenland Day. Postal officials presented their 1988 stamp program and delivered press kits containing a copy of Greenland's second Hafnia mini sheet attached to a large reproduction of Jens Rosen's watercolor winter scene depicted on the stamp, canceled this date. The FINLANDIA 88 people also held their own press conference, announcing that of the 1,000 plus exhibits nominated the committee had chosen 80 each from the USA, Finland and W. Germany. The Finnish stamp program for 1988 was also revealed.

It should be noted that none of the 1988 stamp programs announced by Nordic nations listed the denominations. All postal officials said they expected higher UPU letter rates this year. The best guess was 12 to 14 percent hikes.

Foodwise, there was an INDIA 89 reception in early afternoon for the curry lovers and an ASCAT reception later with more traditional buffet offerings. Both were by invitation only — and well worth sampling.

It was FINLANDIA 88 Day on Sunday, Oct. 18. A continuous series of travel films featuring Helsinki and environs were shown to all comers. At their press conference, officials introduced artist Pentti Rahikainen, designer of their main



Artist Pentti Rahikainen (above) unveils his design of the FINLANDIA 88 combination adult admission ticket and souvenir Faberge stamp to the press. It portrays Agathon Faberge with some of his important rarities in Finnish philately. The sheetlet will sell for FM30 (\$7.23). Face value of a single stamp is FM5.



**A welcome feature at HAFNIA 87 was the numerous rest areas placed throughout the exhibit area. They offered smoking and non-smoking sections.**

FINLANDIA 88 souvenir sheet and admission ticket featuring Agathon Faberge and rare Finnish stamps. Another youth postal card and admission pass illustrated with cartoon characters, the Mumins, created by Finnish artist Tove Jansson was also announced. The double-card designed was by Raimo Sallinen.

### **NH, O.G. Invitations**

Monday, Oct. 19, designated Youth Day, was busy every minute. First was the PHILEXFRANCE 89 reception where more souvenir cards with stamps were presented to guests. These 9x12 folders proved clumsy in the hands of hungry people trying to sample the gourmet buffet of French pates, cheeses, vegetables and wines (also beer). This proved the most popular midday event to date. The IFSDA (stamp dealers group) dinner capped the evening.

On Tuesday, Oct. 20, Faroe Islands Day was marked by another 1988 stamp program release. The Danish P&T offered another dinner. And, the review of Scandinavian exhibits was completed by this writer. The pressroom continued to offer news items for the now thinning press corps. Many departed after covering the initial opening and a few days of activities, with more than one expressing concern about expenses.

Wednesday, Oct. 21, won't soon be forgotten by too many who raced to attend as many events as possible. It marked the opening of Skandia-Postiljonen's two-day auction, plus the big KPK 100th anniversary reception and dinner and a special press tour of Copenhagen conducted by Ib Larsen.

Highlight of the tour had to be the Carlsberg Brewery visit where beer and buffet food consumption dulled the later walk to a cathedral and the famous Round Tower (subject of AFA 273 and 283 stamps). Yet it was the København Philatelist Klub's



**Dominating the entrance was a massive Danish P&T service center providing daily theme cancels and all regular postal services. Numerous clerks kept the lines moving fast.**

evening bash that stood out for those who attended.

In retrospect, the scheduling of Red Cross Day next was prophetic. Gammel Dansk was in order for the hangovers. The big event was an announcement by Denmark's P&T of its 1988 stamp program, again without denominations, at a press conference with translating headsets for the language of your choice. Officials from Greenland and the Faroes were available for questions. The two-day auction ended before 5 p.m. and was followed that evening by a gala Skandia-Postiljonen dinner party for invited guests.

### Danish Post Office Day

Oct. 23 proved a busy program for the press. The Association of International Journalists Philatelic (AIJP) held its congress and recruited members among the press. At noon the group gave a reception. And it was a race to attend this and the special Copenhagen City Hall reception which hosted two bus loads of jury members and press people. The latter served the best cold bord in town, including the famous city hall pan cakes. These are crepes filled with marmalade and dusted with confectioners' sugar — delicious and high in calories.

Of course the Palmare, or awards dinner, held Friday evening was the must attend affair. The speeches were brief and medal awards lengthy.

Back at the show on Saturday it was time to reflect upon the reality of Hafnia 87. Like its Danish sponsors declared, "It isn't the biggest, but the most friendly stamp show." Few, if any, disagreed.

During the first few days, bourse tables remained almost empty while visitors crowded the competitive exhibits. Note: It wasn't revealed to the public, but the star attraction double-error Mauritius cover on display in the Court of Honor was a color photo replica from opening day — until replaced by the original that arrived under guard three days later.

Business picked up at the bourse tables and at philatelic agencies. The Denmark-related post offices had major exposure near the main entrance, while others were located around the fringe of the exhibit halls.

Despite the awesome show, the topic of conversation between most Americans was the costs of attending these internationals in Europe. Most were paying between



\$90 to \$235 per day for hotel rooms, plus equal sums for daily meals. One frugal visitor from W. Germany boasted about living in his camper, spending nights at trailer parks and days at Bella Center. More common, though, was staying at downtown Copenhagen hotels and busing to the show. A few dealers with \$2,500 bourse tables either used the bus, shared taxis or car-pooled.

Meals were another matter. At the show, food was available in all price ranges from \$1.30 for hotdogs at pølser wagons, \$6 and up lunches at two inside cafeterias (which saw most of the business), and two sit-down and order-by-waiter restaurants with linen tablecloths and napkins — and prices to match at \$15 per person and up.

### Some Found the Bargain Spots

Visitors in hotels quickly learned to appreciate the free continental breakfasts. But the prices of other meals at hotels proved outrageous! Talk at the show concerned bargain places to dine. A few bright people read the brochures and headed for restaurants showing the DanMenu sign, which guaranteed two-course meals at the fixed price of DK69.50 (\$10.22), tip included. Others stretched budgets by dining on Big Macs and Whoppers rather than part with \$80-plus per person at better restaurants or hotel dining rooms.

Of course a few lucky people were eating and sleeping at homes of Danish relatives or friends when not attending the show; which brings up a point for consideration. Is there some way for our club to organize a "hospitality exchange program" to provide overnight accommodations for visiting club members? It would, of course, fall on those members residing in or near the big cities where the show circuit always play. If members in these areas are willing to share a guest room with fellow collectors, it could mean more philatelic exchanges and more people attending the important Scandinavian shows.



Most popular dining spots were the numerous cafeterias with bright "indoor" sidewalk seating. Meals and refreshments were reasonably priced.

The Danish 22½ percent VAT payable on all purchases put a damper on many deals. For example, the AFA salespeople absolutely refused to hand over copies of their new 1988 AFA Specialkatalogue (listed at DK348 or \$51 per copy including VAT) for the price of DK270 (\$39.70) without VAT to foreigners. They insisted on mailing the new book for delivery outside Denmark at that price — and charged postage.

Stamp dealers had similar delivery problems, which frustrated a few buyers who paid by cash or plastic. A number of under-the-table deliveries were made between dealers and buyers who knew each other (invoices were sent by mail). Also, it was reported that a number of stamps passed hands in gray market transactions.

Although some dealers complained about lagging sales, most were looking for more Scandinavian material to sell. The other stamps didn't do too well. But dealers are like farmers in some respects, always crying about a bad market. Yet they didn't appear to have much trouble finding expensive restaurants and bars in downtown Copenhagen. They obviously had something to celebrate!

\* S \* C \* C \*

## SESCAL 88 Chooses Hyatt at LAX

By Paul Nelson



News from the California organizers of SESCAL, Oct. 14-16, which will host the 1988 SCC National Convention, is that the Hyatt Los Angeles Airport Hotel has been selected. It replaces the LA Ambassador Hotel which is likely to be closed or demolished before too long.

The show's logo of a sweating Viking (shown here) was drawn by Ib Eichner-Larsen of the Berlingske Tidende, a Copenhagen daily newspaper. Larsen also is active in the KPK and DFF collectors groups and acted as public relations manager for HAFNIA 87.

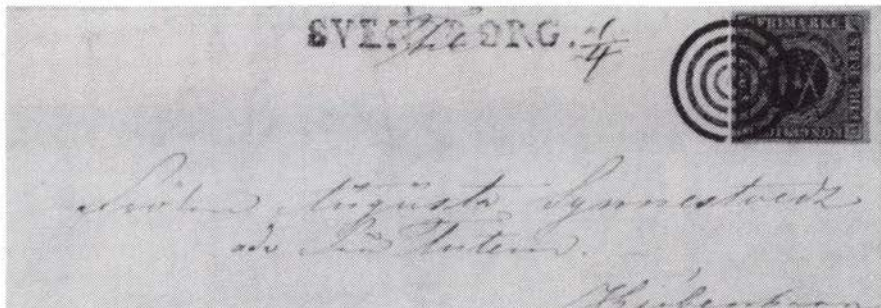
The Hyatt arrangement is a long-term deal and Southern California philatelists can look forward to many years of exhibitions there. SESCAL general manager Bob Thompson says the Hyatt boosts about 18,500 sq. ft. of ballroom

and foyer space — without pillars — and totally usable. The SCC will have a prominent location in the foyer for publicity and membership purposes.

The SCC will be allocated about 100 of the 300 frames. The prospectus is available by writing to either the Golden Gate or Southern California SCC Chapters, the co-hosts of the National Convention.

A special Scandinavian dinner is being planned for Friday night of SESCAL. The awards banquet will be on Saturday evening. Club officials noted that October in Southern California is warm and pleasant, making the weather an added incentive for members from cooler climates to attend.

\* S \* C \* C \*



## Two Recently Discovered First Day Covers Add Fire to Number One Issue Controversy

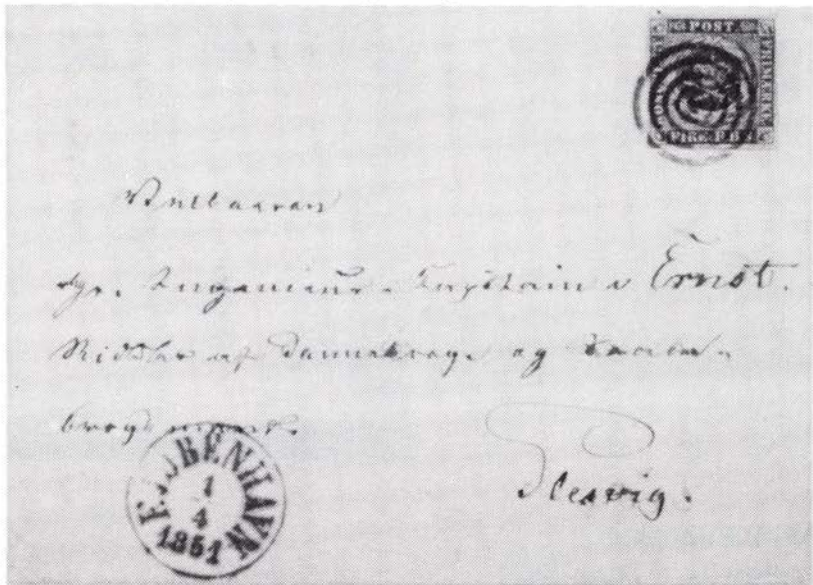


Denmark collectors' frequent disagreement over which stamp rightly carries the honor of being its first stamp got two additional votes at HAFNIA 87. Two exhibitors showed newly discovered FDCs with FIRE RBS stamps canceled April 1, 1851 — fully a month prior to nationwide distribution of the 2 RBS on May 1st.

The first example (above) was in the large gold medal exhibit of Kurt Hansen of Denmark. It featured a SVENSBORG line cancel and a handwritten date next to a mute (target) cancel tying the FIRE RBS to the cover addressed to Kjøbenhavn.

The other (below) belongs to Keld Valbæk's vermeil-winning exhibit and showed a FIRE RBS tied by a blue mute cancel dated by a Kjøbenhavn CDS (also blue) on a cover addressed to Sleswig.

As collectors know, virtually every catalog outside Denmark lists the 2 RBS blue as its first stamp. Leading the opposition with the FIRE RBS as number one is AFA, the most commonly accepted authority among Denmark collectors.



*The Only Danish Catalog with Realistic Market Prices*

# DK<sup>87</sup><sub>88</sub>

## SPECIAL KATALOG


Frimærker & Mønter  
Stamps & Coins

Danmark  
Grønland  
Færøerne  
Dansk Vestindien  
Island 1873-1944  
Norge 1855-1878

Denmark  
Greenland  
The Faroes  
Danish West Indies  
Iceland 1873-1944  
Norway 1855-1873

**SAGA Publishers**  
**PO Box 82, Farum-3520**  
**Denmark**

*The Only Danish Catalog with Realistic Market Prices***Indholdsfortegnelse/Index**

	side/page
Førfilateli København/Pre-Philately Copenhagen .....	9
<b>DANMARK/DENMARK</b> specialiseret/specialized .....	13
Nummerstempler/Numerical canc. 4RBS .....	17
Nummerstempler/Numerical canc. 2sk. 1854 .....	19
Nummerstempler/Numerical canc. 4sk. 1854, 1858, 1863, 1864, 1870 & 8 øre 1875 ..	23
Indenlandsbreve/Domestic letters 1851-1895 .....	39
Udenlandsbreve/Foreign destinations 1851-1885 .....	40
Faarevejle stempler/canc. 4sk. 1864, 1870 .....	53
Esrom stempler/canc. 4sk. 1858, 1983, 1864, 1870 & senere/later .....	54
Taarbæk stempler/canc. 4sk. 1864, 1870, 1875 & senere/later .....	55
Stjernestempler/Star Type canc. & Udslebne/Star removed .....	56
FDC .....	113
 Fluorescerende øvre marginalfireblokke/fluorescent upper PNB .....	115
Tjeneste/Official stamps .....	117
Soldater frimærker/Soldier stamps .....	119
Porto/Postage Due .....	120
Gebyr/Gebyr .....	122
Avisporto/News Paper stamps .....	123
Postfærge/Postal Ferry stamps .....	125
Reklame/Advertising stamps .....	130
Automat/Slot-Machine stamps .....	134
Frimærkehæfter/Booklets .....	137
Årsmapper/Year sets Danmark, Grønland, Færøerne/Denmark, Greenland, The Fa- roes .....	142
Julemærker/Christmas Seals Danmark, Grønland, Færøerne, Dansk Vestindien/Den- mark, Greenland, The Faroes, Danish West Indies .....	143
<b>SLESVIG</b> .....	146
<b>GRØNLAND/GREENLAND</b> specialiseret/specialized .....	149
<b>THULE</b> .....	189
<b>FÆRØERNE/THE FAROES</b> .....	190
Halverede/Bisected diagonally .....	190
Provisorier/Temporary issues .....	191
FRANCO BETALT/Postage Paid cancellations .....	192
Selvstændigt postområde/Independent Postal Administration .....	193
Stjernestempler/Star Type canc. & Udslebne Stjernestempler/Star removed .....	202
<b>DANSK VESTINDIEN/DANISH WEST INDIES</b> specialiseret/specialized .....	204
<b>ISLAND/ICELAND</b> 1873-1944 specialiseret/specialized .....	217
<b>NORGE/NORWAY</b> 1855-1872 specialiseret/specialized .....	246
Nummerstempler/Numerical canc. 4sk. 1855 .....	246
Indenlandsbreve/Domestic letters 1855-1884 .....	249
Udenlandsbreve/Foreign destinations 1855-1872 .....	252
<b>MØNTER/COINS</b> Danmark, Grønland, Færøerne, Dansk Vestindien, Island, Norge/ Denmark, Greenland, The Faroes, Danish West Indies, Iceland, Norway .....	262

**Price per copy: \$32 Postpaid**

**Agent and Distributor:**

**George  
Alevizos**  
  
 2800 28th Street, Suite 323  
 Santa Monica, California 90405  
 Telephone: 213/450-2543

## 171 Nordic Entries Win Medals In Every Competitive Category

*(In response to numerous requests for more complete medalist listings so as to include friends and acquaintances, particularly among the foreign entries, this complete summary of winners in our area is presented. Unless there is a massive favorable response, we shall return to our usual short-summary format! — Editor)*



The Grand Prix National in the competitive class was won by Peter Meyer of Denmark for his "Danish West Indies" entry. Hugo Josefsson of Sweden took the Special Prize for the Outstanding Scandinavian Exhibit at HAFNIA.

Before announcing its awards the HAFNIA 87 jury reported they had used FIP regulations for Evaluation of Competitive Exhibits, but on a voluntary basis also had used scoring sheets. This was the second time that this point system has been used as an adjunct to traditional judging at internationals. The new method becomes obligatory in 1988.

Twenty-five exhibits had been transferred by the jury to other categories for better evaluation in different classes of competition.

Large golds went to Kurt Hansen for "Denmark, Issues of 1851-64," Arnold Nyman of Finland for his "Special Collection of Finland 1875-85," Dr. Gene Scott of Santa Barbara, CA, "Iceland, The Numeral Issues," and Harald Tysland of Norway, "Iceland to 1903."

Small golds were awarded to Knud Erik Reddersen of Denmark for "Classic Denmark, 1851-63," Peer Lorentzen of Ann Arbor, MI, "Danish Coat of Arms 1882-1904," Holger Cartensen, "Denmark, Official Stamps with an Addition of Official Correspondence from before the Introduction of Official Stamps," Torben Geill of Denmark, "Danish West Indies" also presented a pewter wine set from the Bund Deutscher Philatelisten E.V.; Chris McGregor of Vancouver, B.C., Canada, "Greenland," Erik Sörensen, "Special Collection Finland 1875-85," Roger A. Swanson of Oak Park, IL, "Classic Iceland," Johnny Ernest Pedersen, "Norway 1739-1863," which also won a plaque donated by Earnesto Fink of Mexico, and pseudonym "Gute" of Sweden, "Norway 1855-75, Specialized Collection of the Classic Issues."

### More Gold Medals

In Postal History competition, Geir Kaasa of Fjellhamar, Norway, won a gold for "The Postal History of Denmark 1596-1874," and a decorative box donated by the All-Union Society of Philatelists (VOF); Ole Steen Jacobsen, "Mail of the Danish Monarchy 1851-75," also a crystal sculpture from Frimärkshuset Auctions AB, Ole Maintz of Denmark with Felicitations of the Jury for "The Treatment of Parcel Mail by the Postal Authorities and the Public." Howard Lahman Arnould of Princeton, NJ, "Danish West Indies Postal History — the Foreign and Private Postal Services," Arne Thune-Larsen, "The Postal Communication Between Norway and France 1780-1880," F. C. Moldenhauer of Minde, Norway, "Norway, Ship Cancellations 1853-75," and in Postal Stationery to Lennart Daun, "Sweden, Postal Stationery 1872-1922."

Large vermeil medals: H. A. Grubich for "Denmark, 2 RBS and 4 RBS Issues, Extract from Special Collection," John Adler, "Denmark Ferry Stamps," Olof Höglund, "Part of a Highly Comprehensive Collection Sweden 1855-86," also Erich Harbrecht, "Sweden 1.7.1855-77 (In Shades and on Covers)," Harry Åstedt, "Sweden 1855-90," Erik V. Wahlquist, "Sweden, Specialized Collection," Dr.

Ebbe Eldrup of Olstykke, DK, "Iceland, Postal History and Postage Stamps 1847-1903," Jørund Kalvehagen, "Norway 1855-63, Special Collection," Postal History large vermeil: Jan Billgren, "Swedish Postal History 1885-1921," Wolfgang Löhrich of W. Germany, "Sweden — Early Rectangular Cancels (1823-89)," Rune Almquist, "Sweden — The Island of Gotland Postal History."

Ingvar Andersson of Sweden, "Iceland, postmarks taken into use before 1893," Oddbjørn Solli, "Postal communication between Norway and Sweden during the 19th century," Harald Aabogh of Norway, "Use of the stamps of Urban Mail Services and Various Postal Rates," Aerophilately: Fred Goldberg of Sweden for "The Pioneers of Polar Aviation," and Gerhard S. Wolff of USA, "Zeppelin Mail from Scandinavia."

### Other Large Vermeils

Thematic Philately: large vermeil to Eero Hellsten of Finland for "Art and Society"; Literature: Billgren, Bjäringer & Stone of Sweden, *Swedish Rates to Foreign Destinations 1855-1895*.

Vermeil medals to Keld Valbæk for "Denmark, Special Collection 1851-63, enlarged with Cancellations and Letters," Sven Anker Hansen, "Denmark, Extract from Specialized Collections 1851-1930," Jan Grubich, "Denmark 1854-63, Extract from Special Collection," Helge Madsen, "Denmark, Unused, 1854-1933," Tom Provst of Horsens, DK, who will soon be writing for this publication, "Denmark Ferry stamps, Extract with Main Emphasis on Surfaced Printed Issues." Torben G. Rasmussen, "Private Post of Holbæk, Holte and Copenhagen," "Rakul" of Denmark, "Postal Connection to and from the Faroe Islands during the Second World

## Specialized Scandinavia

For almost twenty years we have been helping to build collections through our monthly lists of Scandinavian covers, booklets, postal stationery, locals, seals, literature . . . and even stamps.

### NEW CALATOGS

*AFA Specialkatalog 1987-88*: First edition in over five years. Features Denmark, DWI, Faroes, Greenland. \$48.85

*Faroe Freight Stamps*. (Wowern GF10): First edition in ten years. \$12.00

*Greenland Pakke Portos* (Wowern GF1). First edition since 1983. \$18.25

## Lizabeth Stamp Company

P.O. Box 321

Bloomsburg, PA 17815

War (Extract)," Søren Kjægaard, "Danish West Indies, Extract from Special Collection," Helge Nehm, "Schleswig, Plebiscite Issue 1920," John Sørensen, "Schleswig Plebiscite 1920," Arne Nielsen, "Greenland Parcel Post, with Emphasis on Dispatch Cards," Hans-Otto Kaiser of W. Germany, "Sweden 1855-72 (Extract of Special Collection)," Rune Amlöv, "Sweden 1855-72, plus Reprints," Jorma Leinonen, "Finland, from Essays to Imitations of the Oval Type Postal Items 1845-58."

Olli Kivinen, "Aunus (*semi-official issues of 1917-19*)," Lars Ingemann of Sweden, "Iceland 1876-1904," T. C. Jensen of Denmark, "Iceland, I GILDI '02-'03," Tore Warland, "Norway 1855-67, Preben Gravesen in Postal History for "Danish Dispatch Envelopes and Cards 1851-1930," Oluf Pedersen, "Denmark, the Arms type 1882-1912 from proofs to the end," Anker Bloch, "Mail to/from Greenland during Second World War, documented," Per Ansner, "Swedish Postal History," Matti Sipari, "Finland, Registered and Insured Mail 1806-1931," Arne J. Bay, "Norwegian Postal History," and Lars Liahjell for "The Local Ship-post in the North of Norway 1860-1960."

### Other Vermeils

In Aerophilately: Edvin Rasmussen for "Air Mail in the Nordic Countries 1912-46; Denmark, Greenland, Norway, Sweden, Finland and Iceland," Egil H. Thomassen, "Airmail of Norway," and in Thematic Philately: Bernt Stigbehrst of Sweden, "Scouting — a World Movement," Tage Bøcher-Knudsen of Denmark, "The Dog — Our Best Friend and Helper," Nils-Olav Hellgren of Sweden, "Veterinary Medicine," and Heikki J. Hongisto of Finland, "Sugar in the life of mankind." In Literature: Finlands Filatelistförbund for *Handbook of Finnish Postage Stamps V (1917-1918) (Saarinen Design)*, Kristian Hopballe of Denmark for *The Provisional Means of Prepayment on the Faroe Islands 1919*, Sveriges Filatelist Förbund, *The Oscar Stamp Issues 1885-1911*, and the Kjöbenhavns Philatelist Klub, *NFT, Nordic Philatelic Bulletin*, and appropriate award for the club's 100th anniversary.

Large silvers: Peder Bloch-Poulsen for "Denmark, 1854-57 Issues," Karsten Jensen for "Denmark, Bicolored Øre Issues 1875-1905, Settings 5-33.1," Knud Juul, "The Classical Danish Marginal Numbers, The Importance of the Sheet Border when studying Danish Stamps," Anton Nielsen of Denmark, "Sweden 1855-72 + Reprint," Bent Hansen of Denmark, "Sweden, Ringtype — and Oscar Issues 1872-1911," Bryan E. Johnson of Great Britain, "Finland 1809-92, including the 1892 reprints," Postal History: Kurt Rasmussen, "Steamship Mail 1800-1900 (The Baltic Sea and the Interior Danish Waters)," Jan Bendix, "The Copenhagen Railway Stations and their Post Offices."

Birger Scharling, "The Postal History of the Faroe Islands, from the period of Conveyance of Travellers to the end of the Second World War, 1818-1846," Arne Jerlstad, "Swedish Postal History," Lennart Gullander, "Swedish postmarks on foreign stamps," Börje Wallberg, "The Albatross Mail 1914-18," Erik Hamberg, "Sweden: Numeral Type, Covers 1877-86," Vieno Vihanto, "Finnish Ship Mail from 1798," Hjalti Johannesson, "Iceland Postmarks," and Ole Svinth of Denmark for "Iceland, Extract from Shipmail Collection."

Postal Stationery: large silvers to Henning Nielsen for "Denmark Postal Wrappers 1872-1905," with Felicitations; and Bo E. Stavenow, "Sweden, Postal Stationery 1872-1900." Aerophilately: large silver, Horst Smykalla of W. Germany, "Denmark — Airmail to 1940," and Pall H. Asgeirsson, "Aerophilately of Iceland 1928-46." Thematic Philately: more large silver, Carl Thomsen of Sweden, "Scouting, a historical documentation of the scout movement," Asger Haagen



Jensen of Denmark, "Scouting," Sven Nerman of Sweden, "The biographies of the Vienna Classics," Frode Vesterby Knudsen of Denmark, "Arctic and subarctic mammals, their mode of life and relations to mankind," Kees de Baar of The Netherlands, "Greenland, Land and People," and Sven-Åke Tiren of Sweden, "Theatre."

In Youth Collections: (ages 16-18) large silver to Kristoffer Strandquist for "Swedish Postal Documentation 1664-1863," and (ages 19-21) same awards to Peter Norling of Sweden, "Denmark 1851-1941," Bjørn Nykvist of Finland, "Denmark 1875-1902," Jari Rantschukoff, "Finland, Russian Type 1901-1911," and Ilkka Kai J. Vuorilehto, "Finland 1885-1910."

In Literature: large silver to Norsk Filatelistforbund for its *Handbook on the Stamps of Norway, Vol. II* and Børge Schäffer of Denmark for Philatelic Articles etc. 1954-1986, including contributions to the *AFA Specialized Catalog*.

#### Into the Small Silver Awards

Traditional Class small silver medals went to: Jurgen Callsen, "Denmark, Skilling Issues 1851-75," Knud Eichert, "Denmark 1851-1905, Skilling, Bicolored and Arms type Issues 1882-95," Ove Pedersen, "Extract of Danish Stamps 1851-1905," Peter Oertle of Switzerland, "Denmark 1851-70, Classical Issues — Four RBS to Skilling," Erik Lorentzen, "Danish, Arms Type 1882-1912," Orla Nielsen, "Iceland 1847-1918 and Later Overprints," and Carlo Holm of Denmark "The posthorn of Norway 1877-1908."

Postal History small silvers: Helge Truelsen, "Denmark, Types of Mail and rates of Postage, about 1800-1920," Niels Aabroe-Jacobsen of Denmark, "Plague and Cholera Letters and Regulations," and Uffe Munch-Anderssen, "Danish Registered

## GREENLAND - FAROE - ICELAND and now also DENMARK (DWI) - SWEDEN NORWAY - FINLAND



Participate as seller and buyer in our very popular SPECIAL MAIL BID AUCTIONS. We publish an auction catalogue in colour and in English. We conduct 2-3 auctions annually. Ask for the next catalogue and/or conditions for vendors.

**NORDLYS**  
**SPECIALAUKTIONER**  
P.O. Box 3086  
S-220 03 Lund, Sweden



Mail from about 1800 to today." In Thematics, a small silver was won by Stig Göransson of Sweden, "Ancient Maps and Globes," and another for Jan Olav Reither of Norway, "Nordic Architecture Through Nine Centuries."

Youth Class (ages 16-18): small silvers to Albin Johansson of Sweden for "Denmark Bi-colored Numeral Type 1870-1905," Hans Ulrich Bach-Lauritsen, "27 Øre Provisionals on newspaper stamps, 7 Øre Provisionals on Official Stamps and the Original Stamps," (ages 19-21) Michael Fredericksen, "Denmark from 1912-1934," Carlsen Andersen, "Denmark from 1920," Kim Jensen of Denmark, "The Postal Stamps of Greenland Without the American Issue," and Michael Norling of Sweden, "Norway 1855-1893."

Literature silvers went to: Finlands Filatelistförbund for *First Postal Cards of Finland* and for *Forwarding Agents*; Niels Klottrup for "Articles from NFT," Sveriges Filatelist Förbund, *Swedish Thematic Cancellations*; Norsk Filatelistforbund, *Norwegian Philatelic Magazine, 1986*, and the SCC's publication *The Posthorn* for 1986 under the editorship of Joe Frye who added another bit of silver to his collection.

### Another Long List of Winners

Silver-bronze medalists were: Erik Hedegarard, "Denmark, 1851 to Bicoloured Main Group 4," Gerard Louis van Welie of The Netherlands, "Denmark, Postage Stamps & Postal rates 1851-1900," Dieter Mickel of W. Germany, "Denmark," Jon Adalsteinn Jonsson of Iceland, "Denmark 1870-1905 — Stamps, Letters and Cuttings, mainly Bicoloured Issues," Ib Krarup Rasmussen, "Denmark, the Bicoloured Chr. X Stamps 1918-33. Printings and Letters," Per Fabricius Jensen, "Study of the Frederik VIII 1907-1912," and Torben Jensen of Denmark, "Iceland, Christian X."

Marvin Hunewell of St. Louis, MO, won a silver-bronze for his "Postal Stationery of Denmark, 1865-1900." In Aerophilately a silver-bronze went to Sigurdur H. Thorsteinsson for "Icelandic Air Mail." Also winners in Thematics were Hans Rydermark of Sweden for "Astronomy," and Jorgen Jørgensen of Denmark for "Fishing." Youth Class (ages 14-15) also earned silver-bronze for Henrik Brehn Pedersen of Denmark, "The Faroe Islands 1975-1981, Letters, Cancellations, Varieties," (ages 16-18) Andree Hagel of W. Germany, "Finland — Die Wappen-Löwen-Ausgabe in der Dezimal währung," (ages 19-12) Søren Buur of Denmark, "The Faroe Island Stamps from 1975-1981, including Danish forerunners," Finn Harpsøe, "Denmark from 1918," and Ina Nielsen, "The Fluorescent Stamps of Denmark."

In Literature eight reference books won a silver-bronze as did the Finnish *Philatelia Fennica* and the British SPS's *Scandinavian Contact*.

Henrik Transberg of Denmark took a bronze for his Thematic entry "Joodeleeio — The Nature and Culture of Centraleuropean Alps." Other bronze winners were; Youth Class (ages 19-21) Marianne Vanman Johansson of Denmark, "The Faroe Islands after 1975," and Finn Vanman Johansson, "Greenland 1938-1982 without the American issue." Four bronze medals were awarded in the Literature Class, including *Skilling* the Danish philatelic magazine.

\* S \* C \* C \*



FINLANDIA 88

FILATELIAN MAAILMANNÄYTTELY—FILATELISTISK VÄRLDSTUTSTALLNING  
WORLD PHILATELIC EXHIBITION—PHILATELISTISCHE WELTAUSSTELLUNG  
EXPOSITION PHILATELIQUE MONDIALE—EXPOSICION FILATELICA MUNDIAL  
HELSINKI 1.—12.6.1988



New U.S. Virgin Islands 1987 Christmas seal sheetlet of 15 displays the repeated three-island map theme with a copy of the last DWI 1916 seal in the lower left and the U.S. eagle in the lower right.

### Another Dane Renews Seals Traditions on Islands

Introduced at HAFNIA 87 was the U.S. Virgin Islands' first Christmas seal in some 70 years since it changed hands with Denmark. The last Danish seal was sold there in 1916. Credit for the renewal belongs to Nina York, Danish born, now residing in Christiansted, St. Croix, and her cousin Dorte Hertling who "mothered" the Greenland holiday seal.

It was appropriate that Danes reinstitute the program for the U.S. Virgin Islands since the first Christmas seal was created in 1904 by Danish postmaster Einar Holbøll. To get the new seal program started, the cousins Nina and Dorte met in Copenhagen with stamp designer Holger Philipsen. The result of this meeting turned out to be the new sheetlet. Copies are still available for \$3, plus postage, by writing to: U.S. Virgin Islands Christmas Seal Fund, Inc., P.O. Box 7044, Christiansted, St. Croix, USVI 00820.

## WHY A NEW STAR CANCEL CATALOG?

The previous reference on the subject was published in 1981, and sold out more than four years ago. This alone called for a new, up-dated catalog. Equally important has been the renaissance of interest in cancel collecting. Both new and old collectors will appreciate this new catalog which contains easy to find information presented in a concise authoritative manner in English and Danish.

KE Special Catalog includes listings & prices for Esrom, Taarbaek, Faareveile and the star-removed types. It also gives the type of postmark succeeding the star cancel.

Collectors will be able to locate the main post offices on the map dotted with each number designating a principal mail collecting point.

Copies are available from Jay Smith & Associates, or directly from the author.

Price \$12 — Postpaid

**KE Special Catalog Presents a Digest  
of the Latest Research Data**

**JAY SMITH & ASSOCIATES  
P.O. Box 9639-KE  
Madison, WI 53715**





Earlier reference books by Svend Arnholtz, Arne Begtrup and Vagn Jensens included in-depth studies of Star Cancellations. All are well-respected works on the subject and have stood the test of time. Yet the recent updated study by the J.K.E. group, using scientific methods, has corrected some earlier published usage dates and cancel types. J.K.E. also has in many instances described new facts about some well-known and previously unknown Star Cancels.

With all of the abundant knowledge from the above authors, Kirsten Ehlers has been able to produce the current KE Special Catalog. Future changes and additions, as they are documented, will automatically be published for catalog owners. The author will be pleased to hear from collectors who can improve the known periods of usage and provide other vital information.

**KIRSTEN EHLERS-LORENTZEN**  
3730 Burns Court  
Ann Arbor, MI 48105

## Modern Plate Faults on Finnish Issues

As a specialist and writer on Finnish classics, I have some misgivings concerning my ability to spread the word more frequently about Finland's modern-day stamps. Fortunately, there are some hard-working counterparts in Finland who occasionally fill this gap — to whom *The Posthorn* says thanks.

One report from the pages of *ABOPHIL* in 1986 with additional findings in late 1987 described a few plate flaws which collectors may find useful and noteworthy for their albums or exhibits. The following was the result of research by Kari Karsi published in *ABOPHIL*.

### Red Cross Butterfly Stamps — 1986

*NORMA* 1009, 1.60 + 0.40 value:

- 1.) Red ink dot on left over numeral "1" which appears on either the first or second stamp of the second horizontal row.
- 2.) Black dot NE of the Red Cross symbol.
- 3.) The 7th stamp of the top row has an 0.7 circle in the west arm of the cross.
- 4.) The 6th stamp of the second row has a 1mm oval-shaped circle in the southern arm of the Red Cross.
- 5.) The 7th stamp of the second row has about a 1mm circle on the edge of the upper right wing of the butterfly.

Errors 1, 2 and 3 appear in the same sheet. Errors 2 and 3 also appear together on another sheet without error 1. Karsi has not found any other variance in error combinations, but not all sheets examined show the errors.



*NORMA* 1010, 2.10 + 0.45 value:

- 1.) Red dot appears on the left side of the "2" in the 2.10 value.
- 2.) Black dot located above the letter "M" in SUOMI.

*NORMA* 1001, 5.00 + 0.45 value:

- 1.) Black dot on top of the letter "S" in SUOMI.

Additionally, researcher Karsi reported on his study of the "Year of Peace Stamp" issued in 1986. No *NORMA* or *LAPE* numbers were available because both catalogs have not published new editions in 1987 due to policy changes and revisions. 1.60 Marks in multi-colors:

- 1.) The 8th stamp in the third row has an 0.7mm circle in the upper corner of the letter "S" in SUOMI.
- 2.) The 7th stamp in the bottom row has a 1mm circle on top of the letter "R" in the word "YEAR" in the grey background cloud.

These two errors do not appear on the same sheets; and the greater number of sheets do not have the errors described here.

—Mike Hvidonov

**SCC CHAPTER 13 DELAWARE 21ST ANNUAL AUCTION**  
**General and Specialized Scandinavia**  
**March 29, 1988**

Usual auction rules apply. All bids are confidential. Lots are sold to the highest bidder at one advance over the second high bid, or at the starting bid if only one bid is received. Starting bids are set by the sellers; generally they are well below current market values. Lots are mailed to buyers at their expense.

Unless stated otherwise listings are 1988 Facit, then Scott in #: Catalog values are in (Sw)Kr, \$ or DKr as appropriate. (*At this writing the SwKr is ca \$0.17*). **NO BIDDER COMMISSION.** Lots returnable up to 5 days if erroneously described.

Unused have original gum unless otherwise stated. **CENTERING** is defined: VF means centered, F — perfs do not touch design, VG — perfs may cut. **NOTE:** defective items may be F or VF, but the defects are ALWAYS mentioned. Also: \* — unused, o — used, C — cover or card, NH — never hinged, LH — lightly hinged, VLH — almost no hinge mark, ng — no gum, sp — short perf, cr — crease, o/w — otherwise, cxl — cancel, cds — circular date csl, SON — socked on nose, w. — with, UL upper left, LR P lower right, etc. Lots guaranteed genuine unless described otherwise.

**SEND BIDS TO SCANDINAVIAN COLLECTORS CLUB, CHAPTER 13, P.O. Box 59, ROCKLAND, DE 19732.** For a photocopy of any lot, or more detailed lot descriptions **PLEASE SEND A SASE.** Prices realized sent to all bidders. Good luck!

LOT#	DANISH WEST INDIES	STARTING BID (\$)
1	o 2 (2) 1866 3c, 4 margins, faint cr @ top, FVF (Kr 475) .....	12.00
2	o 10 (10) 1874 10c, SON target scl, slight tone, F (Kr 135) .....	4.00
3	* 13 (13) 1873 50c, violet, pinhead thin, F (Kr 1000) .....	20.00
4	* 26 (25) 1902 8c on 10c, bright, cntrd top, F (Kr 175) .....	6.00
5	o 27 (28) 1902 8c on 10c, partial cds, VF (Kr 80) .....	3.00
6	C 27 (28) same, 4 ring csl, not tied, but St. Thomas and Copenhagen cxls on back, stp VF, cover FVF (Kr 1400) .....	50.00
7	* 29 (40) 1905 5b on 4c, FVF LH (Kr 150) .....	7.50
8	o 38 (37) 1905 1 Fr Harbor, partial cds, FVF (Kr 250) .....	7.00
9	* 39 (38) 1905 2 Fr Harbor, VF LH (Kr 225) .....	12.00
10	* 40 (39) 1905 5 Fr Harbor, VF to Superb, NH (Kr 700) .....	45.00
11	* 44 (46) 1907 Fred. VIII, FVF (Kr 300) .....	15.00
12	C 45 (47) same tied with 1914 St. Thomas cds, FVF (Kr 300) .....	20.00
13	* 46 (48) 1907 30b, key value, cntrd LR, F (Kr 450) .....	16.00
14	o Gr. Brit. (43b) with British C51 cxl, stp is O.K., but oc .....	14.00
15	* — 1910 Christmas seal, VF .....	4.00
<b>DENMARK</b>		
16	o 2 (2) 1851 4x, brn, 4th ptg, 4 mgns, canc 117, F+ (Kr 550) .....	24.00
17	o 8 (8) 1858 8s green, 3 nice mgns, touches LL (Kr 700) .....	22.00
18	o 12 (12) 1864 3s lilac, pinhead th LR mgn, FVF (Kr 525) .....	12.00
19	o 12 (12) same, light crease, VF (Kr 525) .....	14.00
20	o 15 (15) 1864 16s grey, few short perfs, near VF (Kr 800) .....	14.00
21	* 46b (55a) 1912 4o on 8o, watermark var, near VF (Kr 160) .....	10.00
22	* 65vm (64) 1904 20o blue, inv wmk var, cntrd R, F (Kr 150) .....	10.00
23	o 67 (68) 1904 50o grey-lilac, F (Kr 350) .....	10.00
24	o 96SX* 1930 slot machine strip, cds, F (Kr 100) .....	5.00
25	o 101aTB <sup>2</sup> , (223b) tete beche gutterpair, VF NH (Kr 100) .....	5.00
26	* 101aTB <sup>2</sup> tete beche blox/gutterblox, VF LH (Kr 330) .....	25.00
27	* 101aTB <sup>2</sup> (223b) tete beche blk, 1 stp gum spot, FVF NH (Kr 320) .....	16.00
28	* 110bTB <sup>2</sup> 10o orange tete beche pr, near VF (Kr 300) .....	15.00
29	* 110bTB <sup>2</sup> , TB <sup>2</sup> tete beche blox/gutterblox, near VF (Kr 1300) .....	85.00
30	C 119 + 1b setenant cover, cxl 4.9.38, folded, FVF (Kr 100) .....	5.00
31	o 120 (82) 1912 5Kr Postoffice, cds, cntrd L, VG-F (Kr 911) .....	22.00
32	* 165 (132) 1913 1Kr brown, nearly VF (Kr 575) .....	20.00
33	o 201-212 (165-175) cpl set, FVF (Kr 130) .....	4.00
34	* same in blx of 4, few sp, gum wrinkles, FVF (Kr 500) .....	18.00
35	o 198v (160 var) 40o blue, hook L 4 var, cds, FVF (Kr 550) .....	23.00
36	* 229a, 231, 232a-6a (232-8) Type 1 cpl, VF LH (Kr 812) .....	50.00
37	* 245 (B5) 1929 25o blue hi val, F(Kr 170) .....	7.00
38	* 267 var, 269 var setenants with NEPA Horsens labels .....	5.00
39	* 281-284 (258-261) 1937 set cpl, VF NH (Kr 300) .....	10.00

40	* 654 (591) Hafnia ss and ticket, VF NH (Kr 55) .....	4.00
41	* 213-217 (C1-C5) 1925 airs cpl, hr, FVF (Kr 1750) .....	65.00
42	* 213v' (C1var) 100 broken wing, gum cr LL, FVF (Kr 375) .....	16.00
43	C 383-4 1955 FDC to Iowa, 50 surcharges in pairs, VF (Kr 125) .....	7.00
43A	o 403 tied to WRY souvenir card by cds, numbered on back .....	4.00
44	* Tj1 (01) 1971 2s dull blue, ng, sm flts, FVF (Kr 600) .....	13.00
45	o Tj3 (03) 1971 16s green, thin, ragged perfs, FVF (Kr 1400) .....	16.00
46	o RE25 Pontiac ad pr, UL pf missing, CDS, F (Kr 80) .....	3.50
47	o RE30, 31, 33, 41-2, 5 diff ad pairs, FVF (Kr 125) .....	10.00
48	* RE31 + Re34 6-block, nearly VF, NH (Kr 180) .....	18.00
49	* RE33 full pane/tab, 2 natural gum wrinkles, VF LH (Kr 130+) .....	10.00
50	* RE47 3-strip/tab, fresh, VF NH (Kr 450+) .....	55.00
51	* RE47 same, but lightly hinged (Kr 175+) .....	25.00
52	* RE47 full pane/tab, fresh, FVF NH (Kr 900+) .....	100.00
53	* Re48 full pane/tab, negl stain on gum, FVF NH (Kr 220+) .....	23.00
54	o RE62 Benzon + 50 green pair, cds, F (Kr 175) .....	9.50
55	* H26a 1948 booklet, FVF LH (Kr 250) .....	17.00
56	* H28 1950 booklet, VF VLH (Kr 250) .....	19.00
57	* H43 1973 booklet, FVF (Kr 300) .....	16.00
58	* H44 1974 booklet, VF LH (Kr 200) .....	16.00
59	* HS1 1968 Danish Industries blkt, VF VLH (Kr 200) .....	17.50
60	* HS14 1973 Kyrkmalningar booklet, VF NH (Kr 250) .....	23.00
61	* HS14 same, VF (Kr 250) .....	18.00
62	* HS19 1976 København series booklet, VF LH (Kr 120) .....	10.00
63	* HS20 1988 Road Safety booklet, VF LH (Kr 100) .....	9.00
64	* HS21 1978 Handball booklet, VF LH (Kr 100) .....	9.00
65	* 1938 50 green AMA-FIL miniature SS, VF (Kr ?) .....	2.00
66	o Stampless folded ltr, clock cxls (1857+) boxed DANEMARK R.2., w. PARIS/ HAMBURG/BORDEAUX/VALENCIA transit marks, VF .....	65.00
67	C Early (1947) private metered cover to Minnesota, FVF .....	5.00
68	C Postcard w. 1917 Xmas seal tied, but over top edge .....	4.00
69	C 1888 100 PC, Skodsborg Taarbæk csl/Kjøbenhavn side cxl, slightly soiled, L end has 10 mm tear, scarce .....	15.00
70	C 1918 70 Dbl card, Udbyhøj star csl/Havndal side cxl, FVF .....	8.00
71	C 1902 50 official PC, Rorvig star/Nykøbing S. cxls, VF .....	7.00
72	C 1905 50 PC, Sebbesund star/Nibe cxls, few agespots, FVF .....	10.00
73	C 1905 30 PC, Sønderholm star/Nibe/Aalborg cxls, FVF .....	6.00
74	C 1905 30 official PC, Brasskov star cxl/R.R.P.O. side cxl, FVF .....	8.00
75	C 1933 100 PC, Lindved mute/Vejle cxls, VF .....	7.00
76	C 1918 70 PC, Sorbymangle star cxls (2), VF .....	6.00
77	C 1905 30 PC, Vammen star cxl, FVF .....	5.00
78	o 165 diff Star cxls, few stps on pc, many nice strikes .....	185.00
79	o 82 diff Star cxls, several nice strikes .....	70.00
80	o 43 Star cxls/21 Mute cxls, serv good strikes, some dupl. ....	30.00
81	o 112 tied to piece, Hoslev-Kirkeby mute cxl, FVF (Dkr 2000) .....	60.00
82	o 317 diff Mute cxls, many select items, incl many Færoes and several better cxls, FVF lot ...	335.00
83	o 218 diff Mute cxls, incl some Færoes, nice lot .....	170.00
84	o 140 diff Mute cxls, incl a few Færoes .....	88.00
85	o 79 diff Mute cxls .....	38.00
86	*o 63 diff Locals from 9 Byposts, most used .....	16.00
87	*o 22 diff Locals from Aalborg, Randers, Horsens, Viborg .....	7.50
88	* 1904, 1906 Xmas seals, FVF .....	10.00
89	* 1908 Xmas seal, Imperf pair w/o gum (as issued), VF .....	10.00
90	o 10J7//1940, ca 270 seals (9 diff) .....	7.00
91	*o SSM book remainder, some Greenland/Sweden (1983 Sc \$190) .....	19.00

## FÆROES

92	o 24 diff mute cxls on Danish stps, mostly nice strikes/all readable, nice lot (KE Dkr 1860) ..	110.00
93	o 16 diff cds (incl Skopen) on Danish stps, (Wo Dkr 535) .....	25.00

## FINLAND

94	o 6v <sup>1</sup> c <sup>2</sup> (7) 1866, 8p, 1 tooth missing UR, FVF (Kr 500) .....	19.00
95	o 6v <sup>1</sup> c <sup>2</sup> (7) same, 2 teeth missing, faint cr, FVF (Kr 550) .....	10.00
96	o 12Sc (17) 1875 2p grey, near SON WIBORG cds, FVF (Kr 350) .....	19.00



97	0 19Lc (30) 1882 1M lilac, big mgns, cds, near VF (Kr 375)	20.00
98	o 24 (35) 1885 1M bicolor, cds, nearly VF (Kr 125)	7.00
99	o 33a (44) 1890 5M bicolor, faint cds, FVF (Kr 475)	20.00
100	* 36 (47) 1891 2k pair, FVF NH (Kr 160)	8.00
101	* 35-6, 38-9, (46-7, 49-50) FVF (Kr 265)	12.00
102	C 78-82 (113-7) pairs, cover torn, stamps O.K./tied (Kr 540)	12.00
103	C 185, 209-11 (B12, B28-30) on 1940 AM PC to NYC, FVF (Kr 190)	10.00
104	* 183 (172) 1932 2M blk of 4, a key value, FVF NH (Kr 360)	14.00
105	o 363 (279) 1948 12M postrider, light csl, VF (Kr 180)	12.00
106	o 374-5 (283-4) 1949 set cpl, VF/undervalued (Kr 140)	9.50
107	o 442 (326) 1955 25M exhibition, light csl, VF (Kr 150)	8.50
108	C 382 (291) 1950 8M green, tied w. cds to U.S.A. (Kr 675)	16.00

## GREENLAND

109	* 1-9 (1-9) 1938 first set cpl, FVF (Kr 325)	10.00
110	C 36 (33) 1953, advertising cvr, cds (2.5.1960), FVF (Kr 175)	8.00
111	C APO 859, May 5, 1944, some staining, o/w VF (Wo DKr 300)	25.00

## ICELAND

112	* 5 (5) 1873 3s, ng, pinhole, 2mm tr, VF, looks great (Kr 650)	35.00
113	* 8 (15) 1882 3a, UR perf thin, hr, VF (Kr 275)	5.00
114	o 11dv (10 var) 1891 6a, inverted watermark, F (Kr 190)	7.50
115	o 11e (10 var) 6a, skipped (posit 4-5) perf var, FVF (Kr 143)	5.00
116	o 16 (14) 1876 40a, Dan #1 cxl, rnd crnr, few sp, F (Kr 1350)	30.00
117	* 17c (18) 1891 40a br-lilac, FVF (Kr 200)	8.00
118	o 27 (27) 1897 16a brown, part cds, F (Kr 425)	14.00
119	o 61 (47) 1902 20a, I Gildi, part Num cxl, Superb (Kr 60+)	4.50
120	* 76v <sup>1</sup> (71 var) 1908 1e broken frame var, ng, FVF (Kr 225)	10.00
121	o 83 (78) 1907 16a brown, part cds, Fine + (Kr 220)	6.50
122	o 114-116 (92-94) 5a-20a silhouettes, FVF (Kr 275)	10.00
123	o 117 (95) 50a same, cds, F (Kr 180)	7.50
124	* 141 (125) 1920 50a bicolor, cntrd R, VG LH (Kr 700)	12.50
125	* 168 (144) 1925 7a green, 2 sp, minor wrinkle, VF (Kr 270)	8.00
126	* 173-187 (152-166) cpl set, few hr, nearly all VF (Kr 2445)	110.00
127	* 178 (157) 1930 20a red, a key value, VF (Kr 290)	14.00
128	* 196 (172) 1931 35a blue, 1 sp, FVF (Kr 130)	5.00
129	* 204, 205C <sup>2</sup> , 206C <sup>2</sup> , 207-9, 1934 Airs, most VF (Kr 411)	13.00
130	* 252-5 (213-6) 1939 World's Fair cpl, VF (Kr 425)	20.00
131	* 312-4 (C27-9) 1952 Air set, some hr, VF (Kr 152)	7.00
132	* 327-9 (283-6) 1954 IMPRINT BLX, nearly VF, NH (Kr 2340)	90.00
133	C 327-9 Hafstein set on reg cover to Florida, VF (Kr 260)	10.00
134	* 337-44 (289-96) Views cpl set, mostly LH, FVF (Kr 172)	11.00
135	* 407, 408v, 1963 Hunger, spot on back variety, VF (Kr 117)	6.00
136	o Tj2v <sup>2</sup> (02) 1873 8s, o.c., small thin, VG (Kr 800)	10.00
137	* Tj47 (045) 1920 20a bicolor, Fine (Kr 220)	6.00
138	* Tj50 (047) 1920 1 Kr bicolor, Fine (Kr 200)	6.00
139	* Tj60 (054) 1930 Millenary 5a, Fine (Kr 85)	2.50
140	* Tj62v (057 var) the no dot on j var, ng, near VF (Kr 150)	6.50
141	C PC39, PC42, Chr. X/Nat'l Museum, mint/fresh, VFNH (Kr 105)	5.00
142	C Dbl PC6B, Dbl PC29, 1896-1928, mint/fresh VF NH (Kr 78)	4.00
143	C Dbl PC12 Type II, IGildi on 10a, mint/fresh, FVNH (Kr 162)	7.00
144	* O SSM book remainder, 75 stamps priced net@ \$46.75	4.50
145	o 26 (26) crown/psthrn cxl Kleifar i Gi (1sfi) rdi, VF (Kr 195)	14.00
146	o 209 (C20) air w. nice TOLL(UR) strike, VF (Kr 115)	11.00
147	* 198 (174) overprinted "Gredslumerki 10", ng, FVF	12.00
148	o 124/199 28 diff stps with TOLLUR cxls, Fine (Kr 539)	18.00
149	o 84, 94, 132 w. foreign cxls, Edinburgh/2 diff Kobenhavn's	5.00
150	* Xmas seals: 1913, 1915, 1918, 1920-1949, 1957-9, 1962(2), 1962-3, 1867, 40 diff O.G., + 1916 seal ng, most VF, many LH	68.00
151	* Xmas seals: 1921, 1923, 1941, 1942, FVF	5.00

## ICELAND NUMERAL CANCELLATIONS

152	o 78 (73) pair w. SON #28 cxl, FVF (Kr 75 + 18)	6.00
153	o 66 (37) with #33 csl, nearly VF (Kr 25 + 60)	5.50
154	o 127 (111) incomplete but definite #35 cxl, VF (Kr 1300 + 10)	30.00
155	o 115 (93) w. clear SON cxl #41, nearly VF (Kr 15 + 80)	7.00
156	o Tj47 (045) light SON cxl #53, thin, FVF (Kr 525 + 22)	16.00

157	o 80 (75) w. clear #57 cxl, VF (Kr 25 + 17) .....	3.25
158	o 172 (148) clear strike #94 cxl, nearly VF (Kr 25 + 7) .....	2.25
159	o 79 (74) clean SON #117 (type A) strike, FVF (Kr 250 + 6) .....	22.00
160	o 77 (72) pair, SON #119 cxl, VF (Kr 250 + 16) .....	16.00
161	o 80 (75) w. partials #124, Fine (Kr 210 + 17) .....	6.00
162	o 109 (87) pair, clear almost SON #135 cxl, F + (Kr 18 + 140) .....	9.00
163	o 170 (146) partial #144 (upright), 1 sp, near VF (Kr 775 + 3) .....	25.00
164	o 81 (76) clean #145 (Type 1A) cxl, VF (Kr 140 + 6) .....	9.50
165	o 87 (82) blue SON #152 cxl, Fine (Kr 140 + 65) .....	9.00
166	o 170 (146) w. dense, nearly SON #153 cxl, VF (Kr 210 + 3) .....	11.00
167	o 67 (38) on piece, SON #167 cxl, FVF (Kr 210 + 6) .....	16.00
168	o 81 (76) w. heavy #184 cxl, Fine (Kr 140 + 6) .....	7.00
169	o 170 (146) w. 5-194 cxl, FVF (Kr 500 + 3) .....	30.00
170	o 116 (94) sharp partial #208 cxl, nearly VF (Kr 25 + 115) .....	7.50
171	o Tj55 (052) sharp part. #212, scarce on this FVF (Kr 140 + 13) .....	8.00
172	o 124 (108) clear SON #213, FVF (Kr 200 + 7) .....	20.00
173	o 143 Diff #cxls collection (#1//#260), many nice strikes, most all FVF, cancels (Kr11705), stamps (Kr 1464) .....	550.00
174	o 93 Diff #cxls, similar lot (#2//218) (Kr 4512 + 1350) .....	180.00
175	o 21 Diff #cxls on horizontal pairs, most FVF (Kr 712) .....	32.00
176	o Cancels (some partial) #60, 85, 104, 110, 132, 140, 145, 175, 182, 199, 236 on 11 stamps, FVF (Kr 831 + Scott \$70) .....	33.00
177	o Balance of #cxl coll + dupl, 127 stps, FVF (Kr 4881) .....	150.00

## NORWAY

178	C Folded letter, Christiana 1819 to France via Hamburg, VF .....	15.00
179	o 5 (5) 1856 8s, part cds, very shallow thin, VF (Kr 350) .....	12.00
180	o 7 (7) 1863 3s grey, thinned, nearly VF (Kr 3400) .....	25.00
181	o 12v' (12), late RR cxl (1896), 1mm mgn tear, FVF (Kr 150) .....	4.00
182	o 14 (14) pair 1867 4s blue, cds, VF (Kr 150) .....	7.00
183	o 15a (15) 1867 8s pair, cds, tiny mgn trs, FVF (Kr 1000) .....	25.00
184	o 15b (15a) 8s, clear prtg, 2 nibbed perfs, VF (Kr 3000) .....	140.00
185	* 181-3 (B1-3) cpl, 181-2 are LH, 183 is NH, FVF (Kr 800) .....	40.00
186	* 356-66 (279-89) cpl, blx of 4, VF NH (Kr 850) .....	30.00
187	* 426-8 (340-2) cpl blx of 4, VF NH (Kr 1500) .....	80.00
188	* 475-6 (B64-5) WRY cpl, nearly VF, NH (Kr 125) .....	5.00
189	* 680-1 (594-5) cpl + ticket, VF NH (Kr 55) .....	3.00
190	* Grieg test stamp (like #317 w/o value), slight wrinkle, FVF .....	7.00
191	* 1908/1909 Xmas seals, F/FVF (1981 Nordiskjul. Kr 150) .....	5.00
192	* 1908 seal tetebeche gutter pair, gutter cr, FVF .....	8.00

## SWEDEN

193	* 6 (LX1) 1930 REPRINT, VF, NH .....	5.00
194	o 7 (6) 1858 5o green, part cds, nearly VF (Kr 210) .....	6.00
195	o 8 (7) 1858, 9o violet, cds, pinhead thin, FVF (Kr 1900) .....	35.00
196	* 10 (10) 1858 24o, 1mm mgn tear @ B, ng, FVF (Kr 2400) .....	25.00
197	o 15 (14) 1866 17o violet, sm mgn thin, FVF (Kr 1300) .....	25.00
198	o 20 (20) 1872 violet, 1 sp, Fine (Kr 200) .....	6.00
199	o 27 (27) 1872 1rd bicolor, cds, slight toning, F (Kr 475) .....	12.00
200	* 44b (44) 1888 6o redviolet, VF LH (Kr 190) .....	12.00
201	o 44 (44) 1888, 6o violet, VF (Kr 250) .....	9.00
202	o 65 (66) 1903 1903 5Kr blue, nearly VF (Kr 220) .....	12.00
203	o 224 (226) 1924 2Kr, cds, beautiful, VF (Kr 650) .....	90.00
204	o 105-114 (B1-10) 1916 first set, VF (Kr 500) .....	33.00
205	o 115-123 (B12-20) 1916 second set, FVF (Kr 1380) .....	72.00
206	o 126-135 (B22-31) 1920 set, VF (Kr 225) .....	15.00
207	o 136-138 (C1-C3) cpl, FVF (Kr 360) .....	18.00
208	* 331 (321) 1941 60o redlilac, key value, FVF LH (Kr 80) .....	4.00
209	o 340A <sup>+</sup> (332 var) 1942 10o red, Type I, VF (Kr 90) .....	4.00
210	C 359A, B <sup>+</sup> , 360 (360-2) FF Stockholm-NYC (27.6.1945) (Kr 60) .....	5.00
211	* HA6-OV (514b) 1957 booklet cpl, Type II, VF NH (Kr 200) .....	12.00
212	* HA6-RV (514b) 1957 booklet cpl, Type II, VF NH (Kr 175) .....	11.00
213	C USA #836 1938 Swede/Finn 4 blk, 2nd day, C. Reid cachet, FVF .....	5.00
214	* o Sweden/USA 1983 joint issue, Sw booklet/joint FDC, USA Souvenir card/FDC, VF, mint items NH .....	6.50

Use any piece of paper for bids. List lot numbers with your bids and please print clearly. Don't forget your name and address. Thanks.



## Scandinavian Literature Notes

By Alan Warren

The September issue of *Bältespännaren*, The Swedish journal of cinderella materials, has an article by Bertil Fundelius on the Swedish Flag Day stamps. All of these labels are described and illustrated from 1916 to date. In the same issue Åke Torkelstam discusses the Saturday delivery labels, and the journal concludes with a complete listing of members of this cinderella organization.

Arthur A. Delaney writes in the October issue of *Stamps* magazine about a Radio Sweden program called "Stamp Corner" which is beamed all over the world. In the Netherlands journal *Het Noorderlicht* for May 1987, Arne Tørud writes about steamship mail service during the 19th century on Lake Mjøsa in Norway, and editor J.W.J. van den Berg writes about Iceland's ORLOF overprints.

Michael Hvidonov, writing in the September-October issue of the *Collectors Club Philatelist*, presents an introduction to the traditional philately of Finland. Many early classic issues of that country are illustrated. The September *Nordisk Filatelistisk Tidsskrift* reprints an article berating many of the world's postal administrations for issuing stamps intended more for collectors to purchase mint rather than for the stamp-using public. Sound familiar? Well, the article first appeared in 1910!

Harald Tysland, who studies the I GILDI stamps of Iceland, illustrates two letters bearing these stamps in this same issue of *NFT*, and Ib Krarup Rasmussen writes about postal conditions between Iceland and Denmark in the period 1774-1857. In the September issue of *Dansk Filatelistisk Tidsskrift*, Torben Hjørne describes the opinions held by some concerning cancels obtained by collectors on the pakke-porto stamps of Greenland.

In the British publication *Scandinavian Contact* for September, Bill Ross presents an introduction to the postal history of the Åland Islands. In the October 5 issue of *Linn's Stamp News*, Steve Pendleton writes about Bouvet Island and Norway's overprinted "Bouvet Oya" stamps. The *Philatelic News* of the FG Nordische Staaten in Germany for August 1987 carried an item by Bruno Patock on a counterfeit "klipfisk" cancel on a Faroes FDC, and a description by Dieter Fullrich of a possible variety of the Greenland FDC cancel of April 1, 1982. In the same issue Jurgen Tiemer tabulates the various cancellations of Norway, and Ingemar Wägerman identifies Sweden's railway cancels since 1968.

Robert G. Stone writes extensively about 19th century U.S. stamps used from the Caribbean and Latin American countries in *Congress Book 1987*, published by the APC. Of particular interest is his discussion on Danish West Indies with a table of known covers bearing U.S. stamps. Bob also describes a unique cover sent from St. Bartholomew to New York bearing strikes from both the DWI and British St. Thomas post offices.

Ole B. Haugli, the founding editor of *Frikmerker Som Hobby* was awarded the silver lion of the Norsk Filatelistforbund for meritorious work in furthering Norwegian philately. The September issue of this journal reviews the auction by Kjell Germeten of the collection of Norway #1 of "Vi King." In the same issue, editor Jarle Brosveet comments on the pricing found in dealer catalogs compared to actual market prices and the *Norgeskatalogen*, and Geir Lunde writes about 19th

century postmarks of "Hardangers Postekspedisjon."

*Posthistorisk Tidsskrift* for September has an article about postal rates noted in manuscript on Danish covers during the period 1841 to 1851, by Toke Nørby. Svend Hovard describes the RPO markings from 1902 to 1985 for the Høng-Tølløse route, and Søren Jessen writes about disinfected cholera letters during the 19th century. In *Svensk Filatelistisk Tidskrift* for October, Sten Christensen discusses the unusual perforation phenomena found on the early stamps of Denmark.

In the October issue of *Nordisk Filatelistisk Tidsskrift*, Max Meedom clarifies some points regarding the papers used for printing the classic stamps of DWI. In the same issue co-authors Carl Egon Hansen and Ib Krarup Rasmussen discuss how the Christian X 1918-1933 issue came to be bicolored. Niels Klottrup writes about postal rates for letters and cards from Denmark to Norway in the late 1800s. Ib Pedersen begins a series on the *se-tenant* "automat" stamps of Denmark.

Toke Nørby also has an article in the October issue of *Dansk Filatelistisk Tidsskrift* on the double POSTFÆRGE overprint, and Niels Klottrup writes about foreign postal cards used to and from Denmark around the turn of the century. The October No. 1 issue of *Stamp World* from England was a special HAFNIA edition. Knud Mohr describes some of the unusual Danish postmarks from his collection and Alex Newall writes about early Danish airmail. In the same issue David Thompson talks about the first stamps of the Faroes, and Bill Ross tells the story of the post bus in the Åland Islands.

*Frimærkesamleren* for November contains an article about Scandinavian Christmas stamps by Hanne Jensen, and another in the series on Danish Red Cross stamps by Mogens Lethrabort. In the Nov. 14, 1987 issue of *Stamp Collector*, Alan Warren writes about early cachets found on First Day Covers of the Scandinavian countries. The autumn issue of *Seaposter* carries another installment in the series on Swedish ship mail markings by Ingemar Wågerman and Bert Steiner. This one discusses the Trelleborg-Sassnitz markings during the period 1897-1945. Malcolm E. Ferguson has a general article about Greenland in the December *Scott Stamp Monthly*.

The October issue of *Het Noorderlicht* from Holland opens, appropriately, with an article on the Northern Lights and references to many covers, cancels and stamps related to this topic. The article is by J. L. Jvangean. In the September issue of *Svensk Filatelistisk Tidskrift*, Harry Snarvold writes about pre-stamp covers from Norway to Finland via Sweden. The journal also begins a survey of the Normal Cancel 10 used for towns beginning with letters in the last half of the alphabet. *SFF* previously published a monograph on towns of A-J. In the same issue, Ernest Fromen writes about the plate flaws of the 12 öre Ring Type stamp.

\* S \* C \* C \*

## Used Scandinavian Stamps

1988 34-page listing of Denmark, Faroe Islands, Finland, Greenland, Iceland, Norway and Sweden available. Only Fine copies. Want lists filled against SCC number. **What do you need?** I can't help unless you tell me what you need.

**D. G. HERBERT**

1198 S. ALCOTT ST., DENVER, CO 80219

APS 87375

SCC 2335

## Cancel Clinic

This column is presented for members with inquiries about Scandinavian cancels and covers. Specific questions with photos (black and white preferred) of the item can be submitted to either the Associate Editor of the area or directly to the Cancel Clinic c/o The Posthorn. We cannot be responsible for original items. Answers will be valid opinions of our panel of experts and presented in print together with the questions for the benefit of all SCC members. (This is not an expertizing service. No certificates issued.)

**Q. 6** - Does anybody know of a publication or authority that explains how "TOG" numbers were assigned to cancels applied to mail carried aboard these trains? I understand that each TOG number was the route (and/or time) designation used on timetables. But how many trains on the same route used different TOG numbers? This column's logo (above, for example) shows a Rønne-Nexø "T99" cancel. I have others from this route showing "T8" in 1906, another "T8" in 1911, "T6" in 1921 and "T10" in 1935. Whatever happened to the missing numbers between six and 99? I don't believe there were that many trains on that line. My reference, A. Goodbody's *Railway Post Offices of Denmark*, doesn't explain this area of the railway postal system.

David Cotton (2706)  
21 Howell Drive  
Mount Waverley-3149  
Victoria, Australia

**A.6** - In a nutshell the tog numbers on a cancel have nothing to do with the total traffic on any particular railway line. Prior to 1888, all tog numbers consisted of one or two digits. After that date private railway lines continued using two digits, and the DSB national lines began using three and four digits.

*Odd* numbers meant that the trains were headed north or east, and the *even* numbers were for south or west bound trains — but exceptions do exist, according to our guest expert Jan Bendix of Denmark. He says the main emphasis remains on general compass headings.

The reference by Anthony Goodbody, *The Railway Post Offices of Denmark*, states that "to and from København direction" is the key to odd-even numbering. But Bendix feels this isn't important because only a few DSB railway lines went to and from the the capitol city on Sjælland.

Further, there are no missing trains to account for the gaps in tog numbers on any railway line. Tog numbers — no matter how far apart — only designate the scheduled trains that carry mail. [Apparently unscheduled trains neither carried mail nor needed tog number cancels.]

In 1930, explains Bendix, the larger DSB post offices received letter suffixes to their five digit tog number cancels. For example, "The big night-post train from København to Jutland has a five digit number and five different letter suffixes. Yet only three or four DSB post offices [enroute] have postmarks," says Bendix.



**Q.7.** - As a collector of Iceland with some knowledge of the cancels found on its stamps, I would be interested in any comments that can be made regarding these:

- a. the barred-oval and circular date and town cancels on a 35 aur blue (Facit 171)?
- b. The boxed double-strike with overlapping letters on a 1 krone Christian X blue and brown (Facit 142) which appears to be an almost unreadable scramble?
- c. The boxed "FRANCO" which is unfamiliar to me, on Iceland's 50 aur brown and green (Facit 172), or any other Icelandic postal usage, although seen on other European stamps?

John R. Day (1028)  
2000 Golden Rain Drive, No. 6  
Walnut Creek, CA 94595

**A. 7 - a.** The best guess for the barred-oval and CSD cancels is Montreal, Canada. Note the clear "L" with a partial "A" which is presumed to be the last letter in CANADA. Keep in mind that a lot of Icelandic mail was processed at foreign receiving ports as ship's mail before being forwarded. (This reply is a consensus of speculation, including John R. Day's.)

**b.** As to the solution of the letters puzzle on the Christian X stamp, a precise answer may not be possible, however a lot of searching in an Icelandic-English dictionary produced the probable words: TILKYNNNA or TILKYNNING which mean notice, advise or announcement. This cancel could be something akin to the early USA postal handstamp usage to mark mail which has been advertised or posted for pick-up by the addressee or undeliverable. Otherwise it is a mystery!

**c.** The Associate editor for Iceland has had a cover with a similar boxed FRANCO from Sweden, Circa 1920. He, also has never seen a boxed FRANCO on an Icelandic stamp and as such is convinced that none were ever used there. But again it must be pointed out that much Icelandic mail was processed as ship's mail in foreign ports — and many European countries did use the boxed FRANCO marking. Has anybody else another answer?

Mike Falls, AE Iceland  
575 Virginian Drive  
Norfolk, VA 52305

## Wanted — Little Norway, TOR.

covers and cancels on stamps. Also wanted covers pre-1950 from Norway to Canada and from Canada to Norway. Send photocopy, exchange or buy, good price.

**Ola Ellgø**  
Ollelökkv. 14,  
1390 Vollen, Norway  
Member RPSC

# Transfers & Reentries

By Alan Warren

The American Philatelic Research Library publishes *Philatelic Literature Review* four times a year. This journal has served as an important repository for bibliographies and indices in our vast field of reference literature. The third quarter issue for 1987 consists almost entirely of an index to the *Congress Books*, published for over 50 years by the American Philatelic Congress. This monumental task has been capably undertaken by Kathleen Wolsiffer who provides four indices in this issue.

The most important index is the Subject followed by Author-Title. The third index is geographical, so the researcher can look up a specific country or area to learn what has been published by the Congress, and finally there is an index to APC matters such as awards, meetings, officers, etc. Single copies of this issue of the *Review* are five dollars, but I recommend APRL membership for only \$10 (American Philatelic Research Library, Inc., Box 8338, State College, PA 16801).

A recent item in *Linn's Stamp News* announces that Uncover World Trade Corp. is appointed exclusive North American agent for the stamps of Finland and Ålands. Uncover already is agent for Sweden as well as Brazil, Israel, Australia, New Zealand, Soviet Union and France — among others.

The British Philatelic Federation held its 69th Congress in Eastbourne in September. One member of the BPF Council as well as secretary of the Federation's Business Committee is Susan Worsley, who also serves as secretary of the Scandinavia Philatelic Society in England. Membership information can be obtained from the British Philatelic Federation Ltd., 107 Charterhouse Street, London EC1M 6PT, England. And speaking of things British, if you want to keep informed about the international STAMP WORLD London 90 show to be held in May 1990, you can write to the British Philatelic Centre at the same address. The prospectus will be ready early in 1988.

The third book in a series about the classic and modern rarities of the world comes from Amos Press, publishers of *Linn's Stamps News*. In *Philatelic Gems 3*, staff writer Donna O'Keefe presents vignettes of over fifty rare stamps, although several items are "semi-official" and similar categories. Of interest in the Scandinavian area are three items. The Faroes 2/5 øre provisional inverted surcharge that came to light when the late Herb Bernstein, an SCC member, acquired the only known full sheet containing the error in 1962. Recent history of this error includes the sale by Danam to the late Robert Bechsgaard who in turn sold it to an American collector in 1985.

The 5 and 10 penni errors of Finland's serpentine rouletted issue are described in another chapter, including the two color errors and tete-beche pairs. The Stockholm black local stamp, which exists in a unique tete-beche pair, is the third item in O'Keefe's "collection" of gems. Again the rarity lay unknown to the collecting community for years. Even after it was found in 1970, it did not achieve publicity until sold twice in 1986, the second sale being to Danam Quality Investors at the STOCKHOLMIA 86 show.

Copies of *Philatelic Gems 3* are \$7.95 postpaid for the softbound edition, or \$15 for the hardbound, numbered and autographed by the author. The first two books in the series are still available softbound for \$7.95 each from Linn's, Box 29, Sidney, OH 45365.

Members Ed Bode would like to hear from other members with an interest in computers to explore the possibility of preparing a program to record material on

Sweden. If interested, drop a line to Edward L. Bode, 829 Western Air Drive, Jefferson City, MO 65101.

The Skandia/Postillonon auction at HAFNIA set new records with many classics of Scandinavia and an extensive Norway No. 1 collection setting the pace. Coming up on Postiljonen's schedule is the magnificent Christian Andersen collection of Denmark.

Bulletin 2 for PRAGA 88 has an article about postal museums, by Pavel Ctvrtnik, director of the Post Museum in Prague. Some of the earliest postal museums in Europe are Berlin (1872), Leningrad (1877), and Vienna (1888). Bulletin 3 sets forth the standard FIP regulations for this international show.

\* S \* C \* C \*

## Holbøll's Granddaughter Claims She's the Original!



Julemærkekomiteen har som en hilsen til udstillingen HAFNIA 87 fremstillet dette souvenir-tryk af 1948-julemærket.

The Christmas Seal Committee has made this souvenir print of the 1948 Christmas seal as a greeting to the HAFNIA 87 Exhibition.



Verdens første julemærke udkom i Danmark 1904. Ideens fader var postmester Einar Holbøll (1865-1927) og mærket indbragte 74.000 kr. til velgørende formål. Indtægten af 1988-mærket var over 16 millioner kr.

The first Christmas seal in the world was issued in Denmark in 1904. The father of the idea was Einar Holbøll (1865-1927), Postmaster, and that year the seal brought in 74,000 kroner for charitable purposes. The income from the 1988 seal was more than 16 million kroner.

This souvenir printing of Denmark's 1948 Christmas Seal was made for HAFNIA 87, but it still poses descriptive problems for Fru Birthe Hasner, a granddaughter of Einar Holbøll — creator of the world's first such holiday seals in 1904. Birthe explained that a photo taken of her in a pixie hat in 1947 was the 1948 seal's inspiration. Yet it is still listed in catalogs as "boy in pixie's hat" because artist Axel Mathiesen used his own grandson as a live model together with the photo submitted as the approved 1948 design by the Christmas Seal Committee, who at the time thought it a wonderful way to honor Holbøll's memory. The attractive redhead mother of two appeared at HAFNIA, and stated, "It's a bit discriminating! I was a girl already as a child."



## DO YOU COLLECT SCANDINAVIAN STAMPS & POSTAL HISTORY? ARE YOU A SPECIALIST?

### WHAT IS A SCHIFF "ESPECIALLY FOR SPECIALISTS"® AUCTION?

It's an auction designed with YOU in mind. Whether you are a buyer or a seller—each specialized area of collecting is listed in a separate section, making it easier for BUYERS to locate lots of particular interest and for SELLERS to realize maximum exposure for their material.

If you do not get our catalogues you are missing out! Send \$8.50 (\$12.50 overseas) for a full year's subscription to Schiff Auction catalogues and prices realized or send \$1.00 (\$1.50 with prices realized) for a Sample copy of our next sale. If picked up at our office the catalogue is complimentary.

We invite you to consign individual stamps or covers, entire collections or estates—for unreserved Public Auction or Private Treaty Sale. WE ALSO PURCHASE OUT-RIGHT! Contact us first describing your material include your address and telephone numbers.



## Jacques C. Schiff Jr., Inc.

195 MAIN STREET  
RIDGEFIELD PARK, N.J. 07660

Phones (201) 641-5566 — From N.Y.C. 662-2777  
Licensed & Bonded Auctioneers—Established 1947



## Scandinavian Philatelic Foundation Update

By Alan Warren

A nice boost for an SPF publications was presented by Mike Hvidonov in the September-October *Collectors Club Philatelist*, where he reviewed the second volume on the serpentine rouletted stamps of Finland by Mikko Ossa. Permission has been granted by the Collectors Club of New York to publish an English translation of the Iceland section of the Kohl handbook, which originally appeared in German. The translation has been completed and is being reviewed before final typesetting.

In 1987 publicity items about SPF appeared in some 16 journals including several in Europe. The second volume on the serpentine rouletted stamps of Finland won several literature awards and Karl Sanne's book on *Norwegian Exile Mail* took a silver at CHICAGOPEX. SPF publications have been entered in two international shows in 1988. Translation work has been completed on that section of the *AFA Specialized Catalog* which discusses the bicolor issues. This together with the work on Danish numeral cancellations will be published in 1988.

Membership in the Scandinavian Philatelic Foundation is \$10 or more. Donations are tax-deductible and help further our work in bringing important Scandinavian literature to a wide audience. Send your dues or donation to SPF, Box 6716, Thousand Oaks, CA 91359. And ask our Secretary/Treasurer George Koplowitz for the current list of SPF publications.

\* S \* C \* C \*

## Scandinavian Area Awards

Norman Kopp took a gold medal along with the Postal History Society bronze award at INDYPEX for his "Faroe Islands — The War Years 1939-1946." At MIDAPHIL Betty Rutherford took a silver along with the AAPE excellence in presentation award for "Faroe Islands 1895-1974."

At SESCOAL 87 in the literature competition, *The Posthorn* won a vermeil, and the Scandinavian Philatelic Foundation's Volume 2 of *The Serpentine Rouletted Stamps of Finland* won a silver-bronze. *Luren* received a silver at the same show. At SEPAD, a lovely entry by "Badenser" on Schleswig-Holstein, beginning with a 1615 cover, won a gold. In the literature section of CHICAGOPEX, *The Posthorn* won a vermeil.

Greg Frantz received a vermeil at APEX in Aurora, CO, for his "Norwegian Bypost." Additional awards at CHICAGOPEX were a gold to Roger G. Schnell for "DWI Postal Stationery 1877-1917" along with the Marcus White award; and a silver to the SPF for *Norwegian Exile Mail* by Karl Sanne. At SUNPEX, Norman S. Kopp received a vermeil for his "Postal History of the Faroe Islands 1939-1945."

At HOUPEX-TEXPEX 87, George Brooks won a gold, the SCC award, the APS pre-1900 medal for his "Copenhagen's Letter P.O. 1795-1900." At the same show Alan Warren won a silver-bronze and the AFDCS award for "Finland Commemorative First Day Covers," and B. R. Guillory took a bronze with "Danish Postal Cards 1882-1887, Foreign and Domestic Usage." Joseph Kocheisen received a vermeil for his "Schleswig-Holstein" at VAPEX.

At SUNPEX, Norman Kopp won a vermeil for his "Postal History of the Faroe Islands 1939-45" along with the APS post-1940 award. A silver was awarded to James Francis at BLOMPEX for "19th Century Danish Postal Cards." Robert G. Stone received the Erani P. Drossos award for his article in the *1987 Congress Book*, published by the American Philatelic Congress. His article was on "19th Century US Stamps Used from the Caribbean-Latin Areas."

—Alan Warren

\* S \* C \* C \*

## Sweden - A Mystery Cover

I received an inquiry about the routing of a cover sent from the United States to Sweden in 1940. Since the route via Egypt seems mysterious, I would appreciate hearing from anyone who may have a good explanation.

The letter was mailed from Chicago April 30, 1940, bearing a 5¢ Famous Americans stamp, and addressed to an individual in Skåne, Sweden. The only other postal markings on the face of the cover (no markings on the reverse) are due to Egyptian censorship. There is a circular handstamp with Arabic and English words "Postal Censor," and the left edge of the cover has been opened and resealed with typical censor tape imprinted in Arabic and English "Egyptian Censorship." There is also a handstamp "T.3936" which probably identifies the inspector.

The only other marking on the cover is a manuscript "25/11. 1940" in the upper left corner. This may well be the arrival date in Sweden. How did the cover get to Egypt and thence Sweden, and why?

—Alan Warren

\* S \* C \* C \*

## von Wowern Reprimands Author for Tactics

*(Editor's Comment: Prior to printing articles by Torben Hjørne concerning Greenland's pakke-porto cancellations and other stamps, letters were written to Eric von Wowern offering him the opportunity to respond. Wowern replied that "everyone has a right to express their views, but if and when it becomes necessary" he would speak up. What follows is his rebuttal, handed to me at Hafnia 87 and translated from Danish!)*

With some amazement I have read the article "Disagreement Among the Experts" in the September 1987 issue of the *Dansk Filatelistisk Tidsskrift*. Its subject matter and allegations surprised me. I was likewise astonished by the presentation itself, and by the fact that *DFT* editors found it appropriate to publish such an article without the courtesy of giving me an opportunity to express myself regarding this very personal attack. To me it was much more severe in such a publication, rather than in a daily newspaper where a correction or reply could be presented the following day.

To begin my objections, I find that Mr. Torben Hjørne has appointed me an expert. From his article, however, I quickly learned that such a title was not meant to be very flattering. The author also is named as an expert. Before commenting, I shall have to delve further into the problems I found with Mr. Hjørne's article.

He found it opportune to begin his thesis by associating it with a general meeting of the Greenland Group in Copenhagen. Among other things at this meeting, he mentions three quite innocent members of the group who did not even participate in the talks. I find this very indecent that Mr. Hjørne tries to take hostage the Greenland Group in support of his perspective.

In the records of the October 4th meeting, "the board agreed upon asking Mr. Torben Hjørne not to use the name of the Greenland Group in the future as a form of guarantee that his opinions are the proof, particularly regarding subjects which do not have the total support of the Group." This very obviously was not mentioned in his article regarding pakke-porto stamps and their cancellations.

[In writing prior to this, Mr. Hjørne has expressed very critical opinions about the so-called American Issues and the Thule stamps as well. As to his thoughts on the American Issues, Mr. Hjørne's opinions were very effectively rebuked by the postal history experts of Greenland. His statement regarding the Thule stamps were contrary to the facts that they were recognized by the Danish Postal Union when issued in the summer of 1935. Thule stamps were also sold to collectors by the Danish Postal Union's sales office as stamps approved for use on the frontside of postal items — just as Christmas seals are approved.]

Now to the subject of cancellations on pakke-porto stamps in general and my methods of cataloging them in particular. Mr. Hjørne's main criticism concerned the listings in the previous GF-Stamp Catalog. He maintained that only 20 towns (or colonies) had post offices, covering all of Greenland, upon the introduction of postage stamps in late 1938. This included the sub-stations or *udsteder* (out-places). In his spirited argument Mr. Hjørne happened to overlook a possibly interesting detail, namely the fact that the Government of Greenland had limited its communications (or correspondence) to only the appointed 20 colonies with which it had financial dealings. The 20 colonies dealt with the *udsteder* (out-places).

In this manner pakke-porto stamps were correctly distributed only to the colonies. And this goes for potatoes, raisins, coffee and petroleum as well. The colonies were given the responsibility for dividing the supplies among the smaller *udsteder* according to their needs.

In reference to official Greenland circulars, here is the advice, dated 8 March

1926, regarding the charity stamp issue *for letters* in support of Education for Young Greenland Women, "This announcement notifies that all colonies will be shipped an amount of stamps in question, which are to be taken into account in the usual way and sold at a price of 2 øre apiece. All the udsteder are to be supplied with a suitable amount of this stamp, and the population of Greenland is to be acquainted with the purpose of these [stamps], please."

In other words the colonies were instructed to supply stamps to the udsteder from colony supplies — and such action may be logically followed by the conclusion that it was possible to post mail directly from the udsteder. Why else the supply of stamps? Likewise were the pakke-porto stamps distributed to udsteder, where among other stamp usages they were sold for postal savings books; and canceled locally by "avane" or udsteder cancellations when the stamps were redeemed by the owner for cash or trade.

When settlers at the udsteder, as may be concluded from the above, have been able to post mail and have had pakke-porto stamps available, it seems a little absurd to insist that parcels could not be shipped from these remote places. (On the other hand, it should be noted that only a few persons had valid reasons to do so, but this is quite another matter.)

Mr. Hjørne also had some critical remarks regarding the 2 øre bisects and the 2 øre doubleprints. We — that is Mr. Karlo Lindskog and I — have cataloged these items in the 1968 edition, but we are not the originators of these invented "variants." They have been described by many other earlier writers. But nobody is, as you know, obligated to extend his personal abilities (this should have given second thoughts to our Mr. Hjørne). This is the reason why the questionable 2 øre doubleprint is omitted and the 2 øre bisect is now listed without price information.

With reference to the above facts this so-called "expert 'til now" (as I was so tastefully labeled) cannot take away the black spot on Greenland's postal history caused by unfounded allegations, but I can request Mr. Hjørne to put a heavy black line across all of his unfriendly and unsubstantiated postulates?

Yet I must stand behind my previous claim that all cancellations made by the personnel of the Royal Greenland Trading Company and the KGH are legal! For the largest part, however, the cancels on pakke-porto stamps are fiscal or philatelic. This does not make these cancellations unlawful, though! In referring to these, Mr. Hjørne used the expression "illegal."

In his article, this author was so "loveable" as to suggest that I have been making fools of serious collectors. Until further notice, I have chosen to regard this and other remarks from Mr. Hjørne's position the consequence of an itch to write and publish, and not as personal injuries. He suggests that I should be side-tracked. But I consider my response to his allegations well-answered. In the terminology of railways, I find it most opportune to return the compliment and ask Mr. Hjørne to find a side-track and keep off the main line.

—Eric von Wower

p.s. If readers — those still with us — have been bored to death by all of this pakke-porto talk, it's understandable, but I should inform everyone that I have no wish to participate in further discussions with Mr. Hjørne.

\* S \* C \* C \*



FINLANDIA 88

FILATELIAN MAAILMANNAYTTELY—FILATELISTISK VARLDSDUTSTÄLLNING  
WORLD PHILATELIC EXHIBITION—PHILATELISTISCHE WELTAUSSTELLUNG  
EXPOSITION PHILATELIQUE MONDIALE—EXPOSICION FILATELICA MUNDIAL  
HELSINKI 1.—12.6.1988

## Here's an Auction Report with Something For Every Collector Who Didn't Attend

*(This lengthy report covers the highlights and action of a major auction held in conjunction with an international stamp show. You had to be there to appreciate the atmosphere, the tension and unspoken challenge of competition. Almost \$2 million in bids flashed to the auctioneer. The dollar exchange rate was KR6.8 the date of this sale and bids are quoted at that rate. Only a half dozen SCC members were there, so this is for the others who didn't attend.)*

**By Gene Lesney, Editor**



Only in Europe do the auction houses celebrate a big sale by inviting clients and friends to a banquet. The Skandia-Postiljonen group did itself proud by hosting a champagne reception and prime rib dinner at the prestigious Hotel d' Angleterre in downtown Copenhagen. Coffee and cognac followed the entertainment by "Specs," an all-male comedy troupe from Lund University, Sweden.

The auction conducted at Bella Center in conjunction with HAFNIA 87 was a two-day event with winning bids totaling DK12,651,600 (\$1.8 million).

Featured at this sale was the gold medal Danish 4 RBS collection of the late Dr. Steffen Arctander and a Norway #1 Specialized Sale in 216 lots of singles and multiples. The balance of the offerings catered to the Scandinavian crowd attending HAFNIA 87. Another section of the sale presented the private ship letter stamps and covers, including many rare items, from the collection of famous Swedish collector Folke Löfström.

(For the uninitiated, both Sweden and Denmark have a VAT of 22½ percent not including the 12½ percent commission levied by most stamp auction firms. Therefore, smart buyers from either country buy at auctions held in the other country or have their purchases mailed to them to avoid the tax. Posiljonen holds sales in both Malmø and Copenhagen, alternately.)

### Reported in Lot Sequence

Among Sweden offerings was a 4 + 8 + 8 Bco. (Facit 21 + 4f) cover to Finland, all canceled "STOCKHOLM 3.11 1857," signed Sjöman and cert. Obermuller-Wilen, that sold for DK38,000 (\$5,588). Brisk bidding sent the bid on an 8 Sk. Bco. single from DK2,000 up to DK3,200 (\$470) for its "SKARA 27.6 1858" cancel, despite a bent corner perf and ink on the back slightly showing through.

Another Swedish cover with a 3x5 öre (Facit 7c<sup>1</sup> + 8c) of the scarce yellow-green shade, perf. 1855 and 9 öre blue-lilac making the 24 öre double rate in a unique combination, brought DK30,000 (\$4,411). The top price paid for a used single went to the 20 tretio error (Facit 33v<sup>1</sup>) sold at DK32,000 (\$4,705). It was a well-centered copy with two bent perfs.

A matched pair of mint, margin singles of the 55 and 80 öre (Facit 92 + 94) caused a little excitement when the hammer dropped at DK25,000 (\$3,676). But it was a tete-beche pair of the 10 öre Standing Lion with heads against each other, canceled "MARKARYD 29.11.21," which had bidders looking around after an offer of DK4,700 (\$691) almost doubled the opening estimate. It happened again when a set of four different color proofs of the P.H. Ling 5 öre (Facit 318P) jumped a DK2,000 estimate and sold for DK5,400 (\$794).

The Sweden collection listings set a pace for all Scandinavian multiple lots with most going for prices much higher than estimates. The specialty materials sold to floor bidders proved the axiom "inspect beforehand" as prices on lots jumped out of sight. This was repeated in all Scandinavian sections of the auction. For example, a Sweden collection 1855-1920 including 8 and 24 Sk. Bco. singles and a lot of shades, cancels, etc. opened at DK5,000 and sold for DK24,000 (\$3,529).

### Iceland in the Afternoon Session

Outstanding item from Iceland was a ex-Crafoord 1874 cover from Djupivogur to Copenhagen with arrival handstamp on the reverse. It was franked with a single 16 Sk. and extremely rare as such and sold for DK350,000 (\$51,470). Another lot, a small cover with 6 + 10 aur perf. 14 canceled "REYKJAVIK 2.2 ?" addressed to Denmark brought four times its estimate at DK12,500 (\$1,838). It was followed by an address letter for parcel with 2x10 and 2x20 aur perf 14 stamps tied by a "SKYK-KISHOLMUR 10.3" cancel. The unusual 60 aur winter rate for 9 kvint (45 grams) is correct as follows: rate on land between Skykkisholmur-Reykjavik is 25 aur per gram, plus the Reykjavik-Denmark rate of 25 aur + 10 aur per pound. The parcel card was sold at five times its opening price for DK15,000 (\$2,205).

Among the singles was a used 50 aur perf 12¾ stamp with a genuine cancel on the correct 1901 date (Cert. Kaiser) that sold for DK10,000 (\$1,470), proving its rarity. A used copy of (Facit 33) 5 aur perf 14x13½ with "3 prir" overprint sold for DK13,500 (\$1,985). A vertical pair of "prir" overprints with small and large lettering (Facit 36 + 37) used on piece brought DK7,400 (\$1,088).

A mint block of six I GILDI 20 aur perf 14x31½ (Facit 41) with black overprint, slightly reinforced, showing the "03-03" error in the lower middle stamp was sold below its DK 125,000 estimate for only DK105,000 (\$15,441). It remains, however, one of the best I GILDI rarities!

On cover the I GILDI 2x3 aur and 10 aur combination canceled "REYKJAVIK 1.1.03" to Aarhus, Denmark, was hammered at DK4,000 (\$647). Again, the collections and especially the numeral cancel lots exceeded estimates.

### Finland Item Highlights

Winning bids were generally lower than estimates for most Finnish items offered. It was disappointing to see such items as a rare cover to France franked with four copies of 8 penni blacks and a pair of 40 penni carmines (Facit 6C<sup>3</sup> + 9C<sup>3</sup>) with only a few minor perf faults go for only DK12,000 (\$1,754). This cover also had a French "ERQUELINES" CDS handstamp in combination with six serpentine rouletted stamps of Finland!

Bidders made up for the slight by paying DK40,000 (\$5,882) for a "FRÅN FINLAND" printed matter cover to Sweden, featuring an 8 penni yellow green (Facit 14c) with a clean "STOCKHOLM 24.71876" cancel tying it to the show-quality item. Another cover of quality was franked with a 10 penni perf 11 and tied with a "ALAVO 29.12.1882" cancel. It sold for DK13,000 (\$1,911).

Sheets of 1891 Russian type values, Facit 46, 47, 54 and 56v, were passed by buyers who showed little interest in these high-priced lots. But a rare mint NH block of four 3 Mk blue/black, perf 14, watermark W1, brought in DK29,000 (\$4,264), well above the base price.

More eager buyers went for the collections, especially the specialized roulette lots, and virtually all sold for higher prices.

### Denmark Material Also Slow

Remember the explanation about Danish buyers going to Sweden. Well, they must have been someplace other than this HAFNIA auction. Many superb items met the hammer at lower than estimated bids in an almost hushed audience of collectors. It appeared that most bids came from agents and foreign dealers.

An exception was a mint o.g., LH luxus copy of the blue 2 RBS with wide even margins (Thiele pl. I, no. 68, type 4) that sold for above catalog at DK15,000 (\$2,205). A lot of 10 different used 2 RBS Thiele types, mostly with wide margins (a pair with town cancel 34, a Copenhagen train postoffice) and all others canceled "1" garnered DK26,000 (\$3,823), well beneath CV despite accompanying certificates on each stamp.

Among the offerings from the Arctander gold medal collection, bids were mostly on par with expectations. A plating of Ferslew 2nd printing, pl. 1, consisting of 137 stamps with 92 singles, 13 pairs, 5 strips of 3 and one cover, of VF to Superb quality and mounted for exhibition on six pages sold for DK50,000 (\$7,352). Another plating of Ferslew 2, pl. 1, lacking six positions but consisting of 116 stamps (pairs and triples duplicated) went for DK40,000 (\$5,882), due to VF condition.

A collection of 152 different town numeral cancels, mostly VF to superb, on Thiele 4 RBS issues attracted interest and a bid of DK20,000 (\$2,941). The horizontal pair of Ferslew 4 RBS, pl. II, pos. 82-83, with a distinct single target cancel sold above CV in brisk bidding for DK5,800 (\$852). Another top price went for a Thiele I, 4 RBS brown with a bold "40" Løgstøer cancel. It brought an amazing DK4,000 (\$588) despite a low opening bid of DK800.

An 1863 cover to the USA with a unique 128 skilling rate consisting of eight 1857 16 Sk. grayviolet imperfs in pair and block of six sold for DK23,000 (\$3,382) as buyers overlooked its somewhat defective appearance. Any block of six of this issue is rare, especially on cover.

Another cover, franked in four colors with 2 and 8 Sk. issues of 1854 and the 4 and 16 Sk. roulettes of 1863 (AFA 3 + 5 + 9 + 10) with a duplex "181 SJ.JBP.SP.B 30.9" cancel and London arrival postmark of "OC 3.63" and Hamburg transit postmarks on the back brought a bid of DK23,000 (\$3,382).

The only known skilling cover to Gibraltar franked with a 2 Sk. and six copies of the 8 Sk. Sword and Emblem Issue and canceled "DRAGØR 14.4" with an arrival postmark on front, despite minor perf irregularities, went for DK29,000 (\$4,264).

The high bid for a single was given for a rare copy of the 4/8 øre overprint wmk. II, with inverted frame from the 119th printing (AFA 40By), with L. Nielsen Cert. It brought DK32,000 (\$4,705).

### Danish West Indies

With few listings under DWI, the standout item was an 1863 St. Thomas Express Office letter stamped in red on the back. This private mail item sold for DK5,400 (\$794).

Among the Folke Löfström Collection lots, the most imposing single was the Lady McLeod 1847 5¢, a very rare item which sold for DK35,000 (\$5,147).

A mailboat "RUTH" star cancel on a Danish 1øre perf 12½ was taken with a bid of DK12,500 (\$1,838), up from previous sales at \$1,350. Other Faroe Island items brought slightly higher than estimate prices in many instances. Other than higher bidding for collections and mixed lots, there were few surprises.

Greenland lots proved a mixed bag. An address card franked with four 1 øre, print I, and two 10 øre, print II, pakke-portos canceled "STYRELSEN AF KOLONIERE

I GRØNLAND" and addressed to Ritenbenk was sold for DK20,000 (\$2,941). A block of six mint pakke-porto 5 øre Thiele print I garnered DK23,000 (\$3,382), short of a suggested DK25,000.

A lot of mint pakke-porto stamps from P4 to P18 offered as VF with many in blocks of four sold for DK16,000 (\$2,352), above a lower estimate. Full sheets of the pakke-porto issues sold at moderate prices up to DK80,000 (\$11,764). An assortment of 10 NH mint sets of Danmark Befriet overprints in both colors as blocks or strips, plus 15 sets of singles, sold for DK45,000 (\$6,617 in a boring, quick exchange between dealers. Prices again jumped for certain of collectors and mixed lots concluding the Greenland section.

### Just Before the Norway Specialized

A superb 1867 cover to Gothenburg with a pair of 3 Sk. blues (Facit 7) canceled by a "DRAMMEN 26.9 1867" CDS drew a bid of DK8,800 (\$1,294), while a 3 Sk. (Facit 18) letter with a Bergen CDS to Italy with printed matter netted DK5,600 (\$823).

Another cover franked with a 12 øre orange-brown to Sweden and canceled "DILLING 8.2.85" was knocked down at more than double the opening estimate. It sold for DK4,900 (\$720). The extremely rare Norway cover destination of Montevideo, Uruguay, with a 35 øre (Facit 31) canceled by a two-ring Christiana CDS dated 1886 was no surprise at DK6,400 (\$941). Norway collections bidding followed the pattern with top prices for the best material.

### Norway #1 Specialized Sale

Any stamp auction offering rare examples of one stamp in 207 lots can attract a lot of specialists. Postiljonen's late afternoon session drew a crowd who spent DK2,391,600 (\$346,000) in bids that often jumped far above estimates. Two mint copies the 4 Sk. blue stamp with wide margins sold for DK40,000 each. Topping the used copies was the unique gutter pair showing part of an adjoining stamp and the margin between the printing blocks A-C/B-D which went for DK120,000 (\$17,650). It is the only known piece that proves that the horizontal distance between sheets was 14mm.

A copy of Facit Norway 1v<sup>6</sup>, the cracked plate variety as a single with a light grid cancel sold for DK17,500 (\$2,575). But another example in pair with a normal stamp on cover with a blue "TRONDHJEM 2.11 1885" cancel went under the hammer for DK86,000 (\$12,650).

Still another fantastic cover to Leipzig with a strip of six including the cracked plate variety in the right stamp, tied by a German cancel "Aus Dänemark," sold for DK410,000 (\$60,290). Most other varieties did equally well.

An exceptional copy with the very rare "325" Urskoug cancel took top honors and DK20,000 (\$2,940) in the town numeral cancel section. Other rare cancels were "358" Liknæs (not known or listed in Facit) sold for \$2,650; and the same price for the rare "361" Gjæsvær RR cancel.

There were no surprises in the Date Cancellation lots. A few of the higher-priced items went by without bids. Yet a superb copy with wide margins bearing a well-placed "BERGEN 27.6 1856" cancel went for \$1,690. A double foot variety (Facit 1v<sup>9</sup>) with an "ARENDAL 6.6 1856" CDS brought a below-estimate bid DK27,000 (\$4,117). The cracked plate version with a "CHRISTIANIA 25.2 1856" CDS went for DK19,500 (\$2,865). A "SKIEN 11.4 1856" cancel on a strip of five sold for DK48,000 (7,058), again slightly below estimate.



### Better Interest in Pen Cancels

Bidding awakened for the handwritten versions with almost every estimate being topped before the hammer dropped. A double-foot variety single with a three stroke pen cancel went up to DK25,000 (\$3,675), while a six line cancel on a cracked plate copy sold for DK27,000 (\$3,970). A handwritten "171" Laurdal (in Telemark) cancel also sold for DK27,000. Another pen cancel "BJÖRNÖR 3.9" jumped to DK29,000 (\$4,265) in active bidding. The high bid went to a corner copy with a penned "GRAN 4/8 56" which brought DK54,000 (\$7,940).

Perhaps it was the climax of this two-day auction that loosened the wallets on the final section of Ship, Octagonal and Seal Cancels. Or, as one bidder put it, "We still had some unspent cash with only eight lots remaining on the books." Either way, bids topped the reserve prices for all eight lots.

Biggest price went to a steamship ink cancel "CONSTITUTIONEN 3/5 56" and signed by postal clerk "H.S. Øyen" which is one of two known copies. It sold for DK82,000 (\$12,058). Another ship cancel, "PRIDS CARL," went from a DK25,000 opener to a hammer price of DK42,000 (\$6,176). The sole octagonal, a rare "CHRISTIANIA" touted as "probably unique" jumped from a base price of DK30,000 to Dk74,000 (\$10,880) before sold. A Loco Sigilli seal cancel used by the postmaster at Vaagen in Nordland on the Norway #1 final lot brought DK26,000 (\$3,824).

\* S \* C \* C \*



NEW POSTAL RATES effective Jan. 11 were announced for the above definitives issued Jan. 7 by the Denmark P&T. Wavy Lines type DK2.70 lt. green; Queen Margrethe II type DK3.00 red, DK3.20 violet, DK3.80 dark violet and DK4.10 blue; Small Coat of Arms type DK4.50 grey, DK6.60 green, DK7.10 mauve, DK24.00 greenish black. These rates can be extended to other Danish new issues in the 1988 stamp program announcement listed below.

### NEW ISSUES

Most 1988 stamp programs were announced by the Nordic nations at Hafnia 87 by their respective postal administrations, however all except Finland limited presentations to basic descriptive date without denominations. UPU postal rates are expected to rise by 12 to 15 percent, according to speculation last year.

For collectors involved with the study of canceling inks, Denmark's P&T Director General Hans Wurtzen explained that experimental ink tests would continue at unannounced locations. He told the press that its ink research project had two objectives, first for ecological safety and recycling purposes and second for practical postal usage. Also, he added, the P&T had made no prior choice of color for the new ink formula, when selected.

It might be a good idea to watch for variations in cancel inks on mail from Denmark, during the past six months and in the future months ahead. One P&T official, who refused to be named, advised collectors to look for slight color changes leaning toward the purples or violets. Some green colors have been used in the past.

**DENMARK** — Feb. 18: Two stamps to celebrate the 400th anniversary of King Christian IV's accession to the throne. One shows the King's Royal monogram, surrounded by two lions — from the gate of Rosenborg

Castle. The other depicts artist P. Isaacsz' painting of King Christian IV that hangs in the Museum of Natural History at Frederiksborg. Both stamps designed by Remi Mosko. Offset printing.

Feb. 18: Commemorating the 400th birth of Ole Worm, famous physician and natural scientist, who also was renowned as an archeologist. Steel engraving from art by painter Niels Winkel.

Mar. 10: Stamp with surcharge for the benefit of the Danish National Church's Relief Fund. A second stamp to celebrate the 1,000th anniversary of the city of Odense. Designs not given.

April 7: Stamp to commemorate the 40th anniversary of the World Health Organization — WHO. Another stamp to celebrate the 50th anniversary of the Civil Defense Administration.

May 5: (3 stamps) First, commemorating the bicentenary of the abolition of villeinage (*old law forbidding anybody from moving from their home village*). Subject is painting by C. W. Eckersberg of King Christian VII riding past the Liberty Memorial. The offset stamp designed by Trygve S. Hansen. Two EUROPA stamps (CEPT) with the theme of transport and communication also due this date. No other data.

June 16: Stamp to celebrate the 150th anniversary of Federation of Danish Industries.

Aug. 18: (2 stamps) First, commemorating the centenary of Danish Metal depicting Niels Winkel's glass mosaic work. World championship in individual racing at the Vojens Speedway Center is subject of other issue. No additional data.

Sept. 22: (3 stamps) Bicentenary of the Tønder (oldest) State Teacher Training College is subject of one stamp. Second with surcharge in favor of the National Council for the Unmarried Mother and her Child. Also due, the joint Danish-French special stamp postponed from June to be issued in connection with the Danish-French cultural campaign. Each nation will feature the same design, based on a Robert Jacobsen sculpture found in a French museum. No details.

Oct. 13: Two stamps featuring old Danish mills, steel engraved.

Nov. 3: Two additions to the painting series. One shows a painting by Peter Hansen, "Bathing Boys 1902." The other features Fritz Syberg's "Overkærby Hill, Winter 1917." Both designed by litho artist Lisbeth Gasparski.



Native Birds and ethnographic artifacts are subjects of new Greenland stamps.

**GREENLAND** — Jan. 28: Two definitives of the Queen Margrethe series are due, but denominations awaiting a UPU rate change were unavailable at presstime.

April 4: Two new additions to the native bird series, the Kissaviarsuk Jagtfalk and the Nattoralik Havørn, designed by Jens Rosing. Other pairs are slated the next two years.

Sept. 16: A semi-postal issue marking the 50th anniversary of the Greenland Postal Service is expected to produce revenue in support of that nation's philatelic collection. In conjunction they will publish an album showing Greenland stamps arranged thematically. The book is to promote stamp collecting and interest in Greenland.

Oct. 27: Two values in the ethnography series expected. Each features as subjects harpoon points or ladles, casks and vats. Again, denominations omitted. Jens Rosing designed.

**NORWAY** — Feb. 18: Two commemoratives marking the centenary of the Salvation Army in Norway and definitives featuring animals and edible mushrooms.

April 26: (5 stamps) Two will highlight the Europa theme of transportation and communication, while the other three will salute Norway's military jubilees.

July 1: King Olav V has his 85th birthday July 2nd marked by a new stamp, and a new sheetlet will be released showing the various activities in the life of the king. Also, July 1 will be the issue date for a high-denomination stamp noting the Council of Europe's campaign for reciprocal dependence and solidarity between northern and southern Europe.

Oct. 7: This Stamp Day sheetlet with surtax for the promotion of stamp collecting will be followed by two commemoratives honoring Christian IV, the king of both Denmark and Norway 400 years ago.

Nov. 15: The annual stamp program concludes with the issue of two booklets of 10 Christmas stamps each.

**FINLAND** — (Only Finnish postal authorities bothered to print rates on their 1988 new issue announcement, despite the knowledge that changes were underway. Therefore, the denominations listed here are not necessarily correct for the dates of issue.)

Jan. 4: Coat of Arms type 75 is slated with the FM1.80 value.

Jan. 5: Another FM1.80 value honoring Lauri "Tahko" Pihkala.

Jan. 20: A definitive featuring Urho Kekkonen National Park, value FM2.40, plus another of FM2.20 rate showing the Kerimäki Church.

Feb. 1: First, a discount stamp booklet 10xFM1.80 for vending machines, and the third FINLANDIA 88 FM1.80 postal card showing the Helsinki Fair Center.

Mar. 3: Three Red Cross Festival stamps with surcharges benefiting that charity at FM1.40+0.45, FM1.80+0.45 and FM2.40+0.50; and a FM1.40 value marking the 150th Anniversary of the Meteorological Institute.

Mar. 29: Finland joins Sweden and the U.S. in this tri-nation issue honoring Finnish settlements in America 1638-1988 with a FM3.00 stamp.

May 5: (5 issues), First, the FINLANDIA 88 exhibition stamp featuring Agathon Faberge, which sells for only FM5.00 without the adult admission ticket, or FM30 with a detachable ticket exchangeable for a daily pass. Next is the joint Europa CEPT two stamp issue featuring Transportation, FM1.80, and Communication, FM2.40; to be joined by Europa CEPT maximum card (No. 9) showing a horse-drawn tram, FM5.00. And, the FINLANDIA 88 Exhibition childrens' admission ticket on a folded postal card, printed on four sides, FM10. with ticket, FM1.80 without.

June 2: Another FINLANDIA item, a miniature sheet no. 5 depicting airmail transportation on two stamps 3xFM1.80 and 2xFM2.40 (on sale from May 23 to Nov. 30).

Aug. 15: A FM2.20 stamp honoring the 150th anniversary of Fire Brigades in Finland.

Aug. 17: Honoring the quinqucentenary of the Book in Finland, a FM1.80 stamp.

Sept. 6: A booklet 6xFM1.80 marking the 350th anniversary of the Posts and Telecommunications.

Oct. 10: A stamp noting children's playgrounds, FM1.80.

Nov. 4: Two Christmas 1988 stamps set for FM1.40 and F1.80 rates.

#### ÅLAND

Jan. 4: Marking the 350th anniversary of the Postal Service, FM1.80.

Mar. 3: Two issues, a FM2.20 stamp for the centenary of Agriculture and a FINLANDIA 88 postal card of Kastelholm Castle, FM1.80.

June 4: A three-stamp series on sailing ships, Galley Albanus FM1.80, Schooner Ingrid FM2.40 and Barque Pamir FM11. Also, a maximum card showing the Galley Albanus, FM5.

Aug. 8: A FM1.40 stamp depicting the Jomala Church.

\* S \* C \* C \*

## SPECIALIZED SALES of SCANDINAVIA

6 times a year we have a sale exclusively against written bids, specializing in:

DENMARK	FAROES	GREENLAND
	DANISH WEST INDIES	
NORWAY	SWEDEN	FINLAND

Each catalogue contains 1200-1500 lots and is fully illustrated. ALL single stamps are illustrated in actual size, as are also many covers, etc.

Ask for FREE catalogues from:

### O. GOTTLIEB A/S

P.O. Box 1019

Viemosevej 5 C Bredballe,

DK-7120 VEJLE OST, DENMARK

Tel. (05) 81 61 25

Member: A.S.D.A. and A.P.S. United States; P.T.S. London  
Danish Stamp Dealers' Association

# The Scandinavian Collectors Club

## ELECTED OFFICERS

PRESIDENT:	Alfred A. Gruber, P.O. Box 1073, Newark, DE 19715
VICE PRESIDENT:	Allan Warrington, P.O. Box 1278, Newport Beach, CA 92663
SECRETARY:	Raymond Erickson, 5427 Delia Way, Livermore, CA 94550
TREASURER:	Donald Himer, 12360 Chandler Blvd, North Hollywood, CA 91607
DIRECTORS-AT-LARGE:	Kauko Aro, 38 Elena Place, Belleville, NJ 07109 H. J. (Pete) Schlueter, P.O. Box 75281, Los Angeles, CA 90075 Alan Warren, P.O. Box 17124, Philadelphia, PA 19105
IMMEDIATE PAST PRES:	Wayne P. Rindone, P.O. Box 276, Newtonville, MA 02160

## APPOINTED OFFICERS

EXECUTIVE SECRETARY:	William H. Lamkin, P. O. Box 302, Lawrenceville, GA 30246
HISTORIAN:	Dr. Frank N. Schubert, 8505 Cherry Valley Lane, Alexandria, VA 22309
LIBRARIAN:	Dr. W. E. Melberg, Box 134, Allenton, WI 53002
STAMP MART MANAGER:	Wade H. Beery, P. O. Box 3781, Orlando, FL 32802
APS REPRESENTATIVE:	Joe F. Frye, P. O. Box 22308, Memphis, TN 38122
PUBLICITY CHAIRMAN:	Howard Schloss, Apt. 515 - 261 Congressional Lane, Rockville, MD 20852
BY-LAWS CHAIRMAN:	Wayne P. Rindone, P.O. Box 276, Newtonville, MA 02160
AWARDS CHAIRMAN:	Ronald B. Collin, P. O. Box 63, River Grove, IL 60171
LITERATURE PROMOTION CHAIRMAN:	Alan Warren, P.O. Box 17124, Philadelphia, PA 19105

## STAFF, THE POSTHORN

EDITOR:	Gene Lesney, 858 Howe Drive, Salinas, CA 93907, Phone: (408) 758-1507
BUSINESS MANAGER:	H. J. (Pete) Schlueter, P.O. Box 75281, Los Angeles, CA 90075

## ASSOCIATE EDITORS

CHAPTER NEWS:	Paul A. Nelson, P. O. Box 57397, Los Angeles, CA 90057
D.W.I.:	Victor E. Engstrom, 2655 Pebble Beach Drive, Clearwater, FL 34621
DENMARK & FAROES:	Marvin D. Hunewell, P. O. Box 5437, St. Louis, MO 63147
FINLAND:	Mike E. Hvidonov, 4 Dwight Lane, Great Neck, L.I., NY 11024
GREENLAND:	Dr. Dan Laursen, 4901 East Eastland, Tucson, AZ 85711
ICELAND:	Michael E. Falls, 575 Virginian Drive, Norfolk, VA 23505-4242
NORWAY:	Jared H. Richter, 1353 Plum Street, San Diego, CA 92106
SWEDEN:	Eric P. Karlson, 2455 Union Blvd. Apt. 4K, Islip, NY 11751
PRINTER:	Dennis W. Wilcox, 102 South Main, Madrid, IA 50156
DESIGN & LAYOUT:	Trish Johnson, 102 South Main, Madrid, IA 50156
CIRCULATION:	Carol Wilcox, 102 South Main, Madrid IA 50156

EXECUTIVE SECRETARY — Send all dues, applications for membership and change of address.

BUSINESS MANAGER — Send all ads, payments of ads, or requests for rate sheets.

EDITOR, *The Posthorn* — Send general articles for publication.

ASSOCIATE EDITORS, *The Posthorn* — Send articles pertaining to individual countries to the appropriate Associate Editor.



## President's Message

By Alfred Gruber

Attending HAFNIA 87 was a refreshing experience. The number and variety of philatelic and literature exhibits provided a rare opportunity for study. It was also a pleasure to meet SCC members from Europe and North America. Our next opportunity to attend an international is FINLANDIA 88, June 1-12, at Helsinki. Next year we have NORDIA 89 at Frederikstad, Norway, another June date.

### Sunny Convention Plans

Our busy members in California are presently laying the groundwork for the 1988 National Convention at SESCOAL in October. So when planning your fall holiday why not include SESCOAL on the itinerary? And let's make ourselves welcome to Los Angeles by providing exhibits. Entry forms are available from George Bowman, 1141 Pelham Drive, Lompoc, CA 93436.

An occasional mixup is inevitable. (For example the airline lost my luggage both going and returning.) But here I refer to the scrambled dues notice and the missing dues envelopes in our Nov. *Posthorn*. We strive for perfection (ask Editor Lesney about the breeding habits of typos), so I cannot promise it won't happen again. As a boss once said, "Make the errors small ones."

### Membership Among Top 15 APS Units

As you might know, we are APS Affiliate No. 79. And in his recent report, APS chairman of affiliates Robert de Violini, noted 147 units with a total membership of about 65,000 (including duplications). Only 15 units, the SCC among them, reported membership rolls of 1,000 or more! I tell this with some pride and with the recognition of the work it takes to attract new members. Included is the services provided to retain their interest — which is what our officers, editors, chairmen and executive secretary try to do.

While these people work on ideas and theories, along comes Timothy McRee (2794) of Salisbury, NC, who brought in 10 new members at last count. How did he do it? Simple! He enclosed an SCC application (available from Bill Lamkin) in letters to his stamp correspondents. Tim capitalized on the fact that collectors often change or add nations to their preferences from time to time. And, there are many people with a repressed yen to collect — who suddenly burst forth! Both groups of people, once their inertia is triggered, become SCC candidates.

Regarding the search for potential members, I am amused by friends who mount labels on letters to me that proclaim "COLLECT STAMPS." Those labels would be more effective on mail to brothers-in-law, old friends, grandchildren and other non-collectors.

### Finally, a Sad Note

It is with deep regret I report the passing of our previous executive secretary Edwin C. Godbold of Atlanta, GA. He did good things during his lifetime.

\* S \* C \* C \*

# The Editor's Notebook

By Gene Lesney



For the record, our November issue created a few firsts for this journal. To begin, the printing deadlines conflicted with the Oct. 15 opening of HAFNIA 87 in Copenhagen. Your editor's scheduled departure was Oct. 14. So the final page proofs had to be airmailed to the show's Press Center in Copenhagen. They arrived four days later via USPS Express Next Day Service — franked with \$23 postage which produced a giant, one-of-kind, non-philatelic cover! Numerous corrections were telephoned back to Iowa using an AT&T Calling Card. And, much to the chagrin of our Executive Secretary Bill Lamkin the 1988 dues envelopes were omitted. (*They are included with this issue and require immediate attention!*) That big Express Next Day cover was presented to HAFNIA public relations manager Ib Eichner-Larsen, who collects U.S.

## Did It My Way

This post-HAFNIA edition demonstrates this editor's idea of what the coverage should be for such an important event in our area of interest. It is followed by a bit extra news promoting FINLANDIA 88 coming up in June — another big show. These internationals really set the standards for all competitive collecting. Your comments are welcome.

Also, if promises prove valid, a lot of new articles of interest to intermediate collectors will soon be appearing our journal. Many noted Scandinavian writers have agreed to provide both topical and classical material. A few articles are now being translated by our Associate Editors. More are coming! Additionally, we are looking for a few good people willing to translate in any Nordic language. All it takes is a little time and a bit of philatelic vocabulary. Our editors will polish, if requested.

\* S \* C \* C \*

## SCC Group Flight to FINLANDIA 88

Don Halpern is organizing a group flight to FINLANDIA, June 1-12, in Helsinki. From previous successful flights, the trip will be planned with a stopover in Iceland, Copenhagen or Stockholm. The opportunity to visit Leningrad is being considered as a side-trip if enough people are interested in this optional excursion.

Please contact Don as soon as possible at (201) 889-5665 (EST evenings please) or write to:

Don Halpern  
P.O. Box 846  
New Providence, NJ 07974

If you would even consider the trip, please let Don know ASAP so that he can estimate the potential response.

\* S \* C \* C \*

Announcement

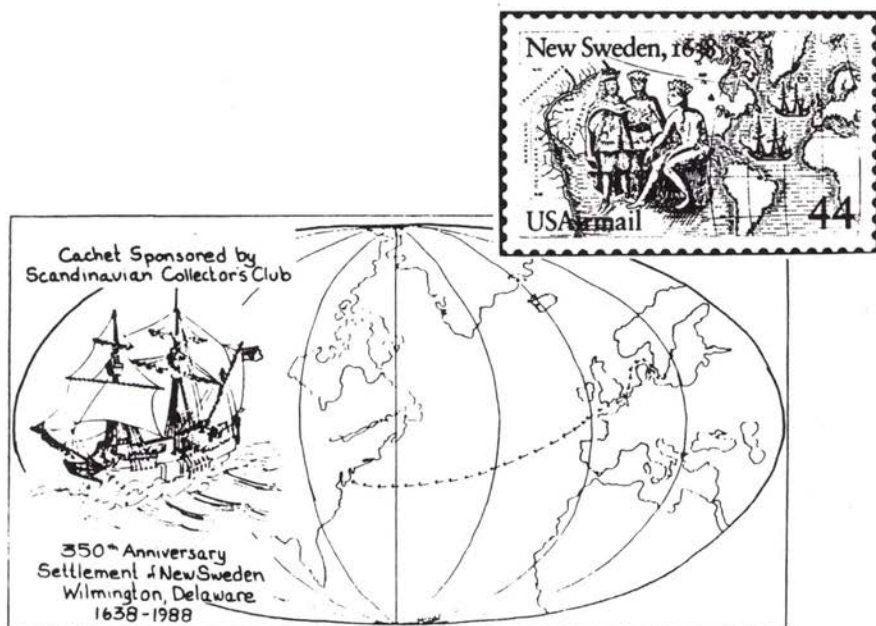
## First Ever Three-Nation Stamp Issue

The only remaining historic date in Scandinavian-American philatelic history in this century is just several weeks away.

On March 29th, the United States, Sweden and Finland will jointly issue stamps of similar design commemorating the 350th Anniversary of Swedish and Finnish settlements in the New World. The U.S. stamp will be a 44¢ air-mail, perhaps the last to be issued in that denomination.

### Event to Be Official Club Project

SCC will be at the Wilmington, DE, first day ceremonies servicing covers for its members and the public. The Delaware Chapter is sponsoring the event on behalf of SCC, and all proceeds will be returned to SCC for the benefit of Scandinavian philately worldwide.



### Special Pre-event FDC Offer!

SCC has prepared a special full envelope cachet in limited quantities for this event. First Day Covers may be ordered at the special rate of \$1.25 per cover by those who respond with the quantity desired, a check payable to SCC Chapter 13, and a SASE (No. 10 size) before March 20 to: SCC Cachet, P.O. Box 7313, Wilmington, DE 19803. After that date covers will be \$1.50 each.

**SUPPORT SCC!**

**MAIL YOUR ORDER TODAY**

## Chapter News

Chicago Chapter 4 reports a successful 1987 program with meetings showing an average attendance of 20. Bob Frigstad opened that year showing a slide program of early Norwegian covers. In February, Evelyn Rowley showed members that the reverse side of Danish postcards can also be intriguing. Richard Drews entertained the unit with a clever Scandinavian twist to his popular "Please Bear with Me" program, a fascinating subject with helpful exhibiting tips thrown in. May was COMPEX month and Al Gruber, our pexy, and wife Annette were special guests at our banquet where Stanley Hanson received the Carl Pelander Award. Nancy Blouin was also honored with the Dr. Earl Jacobsen Bowl for her work on behalf of Chapter 4.

Forty frames of Scandinavian exhibits were shown at COMPEX. Alan Warren took top honors with his presentation of "Sweden: Stampless Covers." A highlight of the show was a Jens Warrer Nyboe memorabilia exhibit of two frames expertly arranged by Norman Kopp. It drew much attention.

The Wisconsin picnic held in July and hosted by Howard Bauman and Doc Melberg was a success with 28 guests attending. Meetings featuring Nordic airmail slides, a potpourri, a small chapter auction and a Swiss stamp slide show by Howard Bauman rounded out the year for this midwestern group.

The Windy City group offers an open invitation to join them at monthly meetings held on the 4th Thursday of the month (except Nov. and Dec. when both meetings are combined in a 1st Thursday in Dec. gathering) at the Sherwood Forest Restaurant, 8353 West Irving Park, Chicago, IL 50534. p.s. They don't meet at all in July and August! Despite the tricky schedule, the invitation stands.

\* S \* C \* C \*



## Library News

Dr. W. E. Melberg, SCC Librarian

This quarter's report is again favorable. As you no doubt have seen, we have finally a handle on the missing item list. Some of the lost publications were judged not worth the effort to retrieve them; so they were forgotten. The best news is the donated material. We have been fortunate. Thank you one and all.

Alan Warren has been the largest contributor. He must be on every important mailing list and he shares his incoming material with us. Please refer to his PH columns which contain reviews of books and publications to pinpoint noteworthy articles. These, then, are incorporated into the SCC library.

If there are items that interest you please let me know and I will gladly have copies made and sent out. I will also furnish the names of sources (USA or overseas) where the latest books and/or publications can be purchased at the lowest prices.



### Donation List (as of Dec. 31, 1987)

#### Books and Publications

##### Aarhus Frimærkehandel

*AFA-Skandinavien*. Frimærkekatolog 1987-1988. The annual Danish catalog of all Scandinavia. Also covers the United Nations. The usual high quality from this publisher. 6 x 8" 370 pg. (Danish)

*AFA-Danmark*. Frimærkekatolog 1987. The new color catalog covering Denmark, the Faroes, Greenland & DWI. High quality as usual. 6 x 8" 256 pg. (Danish)

*Populær Filateli*. Monthly stamp journal for collectors. Has a number of short articles about stamps of the world. 6 x 8" 32 pg. (Danish)

*AFA-Special Katalog 1987-88*. The long-awaited book comes through with flying colors. A huge encyclopedia of Danish philately. Beautifully done with many illustrations. Many new additions to the 1981-82 edition: lists new 4 RBS varieties, new 1854 2 Sk. study, new information about the bicolored issues in a clearer format, steel-engraved issues are presented with new varieties, revised sections of Greenland, the Faroes, DWI & Slesvig-Holsten. Added feature is a section involving a study of the bicolored Christian X stamps, Greenland postal history, proofs & essays, postal etiketter and postal rates. A great book! 6 x 8½" 591 pg.

##### Kauko Aro

*Malli 1875*. 6 x 8" 110 pg.

*Katalog over Rich. Granbergs samling af Finlands Helsager*. 1934. Book featuring an outstanding collection of Finnish stationery. 6½ x 9½" 100 pg. (Swedish)

*Johtaja Rich. Granbergin Kokoelma Suomen Ehoita*. 1934. Finnish edition of the above book. 6½ x 9½" 100 pg.

##### Ib Eichner-Larsen

*Nordatlantex 86*. Exhibition catalog from the Faroes show held in June 1986. Features an article by Kristian Hoppalle about the 1940-1941 Færøprovisoriers and their history (philatelic hanky/panky?). 6 x 9" 73 pg.

*Hafnia 87 Palmars Bulletin*. 6 x 9" 32 pg.

*DK 87/88 Special Katalog*. Forlaget Saga. Denmark, Greenland, the Faroes, DWI, Island 1873-1944 and Norway 1855-1878. It prices stamps (mint, used & on cover) and coins of these countires. 8 x 10" 283 pg. (Danish and English).

##### Finland Post Office

*Postnummer Katalog & Map 1986*. Postal zones listing. 8 x 12" 256 pg.

##### Doug Follkie

*A Brief Summary of the Norwegian Postal History*. 8x10" 16 pgs. (English, German & French).

##### Al Gruber

*Danish philatelic journals picked up at Hafnia*.

##### Matt Hedley

*NFT & SFF journals*. A number of older issues.

##### Ture Heed

*Frimarken-Jorden Runt*. A book, written by the donor, of philatelic articles selected from over 40 years of published Sunday columns of "Ny Tids." Stories about stamp issues from all around the world. 6 x 8" 372 pg. (Swedish)

##### Torben Hjørne

*Greenland Special Catalogue 1985*. Classic Greenland. Outstanding book written by the donor covering this extremely interesting area. A must for the serious Greenland collector. Very detailed. Covers rates, postmarks and varieties. 6 x 8" 96 pg. (English)

##### Iceland Post Office

*Postnumeraskra*. Postal zone book 1987 4 x 6" 34 pg.

##### T. Bøcher Knudsen

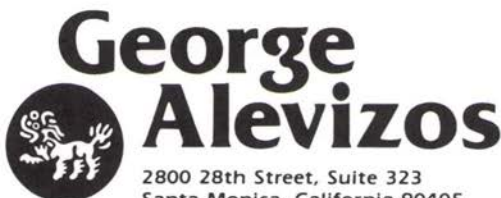
# Scandinavia

**Always the Unusual, Esoteric & Inimitable...**

We offer Mail Sales with extremely interesting material in the \$25 - \$150 range. In addition, our Public Auctions offer appropriately rare and specialized material.

We are always interested in buying specialized items or collections.

Our Mail Sale and Public Auction catalogs are sent free to members of the Scandinavian Collectors Club on request. Please specify which catalog you wish.



## George Alevizos

2800 28th Street, Suite 323  
Santa Monica, California 90405  
Telephone: 213/450-2543  
Cal. Auc. Lic. No. A1229

*Frimærkesamler-Hvorfor og Hvordan.* Interesting pamphlet about collecting Danish stamps. 8 x 12" 15 pg. (Danish)

*På Mærkerne.* Paper published by the Danish Philatelic Society. Articles about motive collecting and postal history. Danish stamp dealers are listed and locations of all the Danish stamp clubs are given. 1987 11 x 66" 16 pg. (Danish).

*Hafnia 87 Exhibit Katalog.* 6 x 9" 162 pg. (Danish & English).

*Hafnia 87 Palmares.* 6 x 9" 32 pg. (Danish & English).

### **Bent Knutson**

*Danmark under 1 Verdenskrig.* Postal Dokumentation by Erik Hvidberg Hensen. Article in Philos-Sept. 1987 (Holstebro Filatelistklub paper). Postal history of Denmark during WW I (1914-20). Photocopies of various postal items. 6 x 8" 18 pg. (Danish)

*Postens Forsendelse.* Article from Philos-Nov. 1987. Outlines the routing of Danish postal items throughout the world. 6 x 8" 12 pg.

### **Jack Mickelsen**

*The Surveillance of Foreign Mail by German Authorities during WW II.* English translation of a detailed German work. (photocopied). 8½ x 11" 88 pg.

### **Frank Mooney**

*Islensk Frimerki-1988.* Catalog of Icelandic Stamps-32nd Edition. Full color. The annual publication with great reproductions of issues and sets. FDC are priced from the Republic period. 6 x 8" 107 pg.

*Islensk Frimerki-1987.* Same as above catalog. 1st color edition. 6x8" 104 pg.

### **Norway Post Office**

*Postnummer.* Postal zone listings. 1987 8 x 12" 52 pg.

### **Postillon A/S**

*Norway #1 Specialized.* A highlight from the Hafnia 87 auction. Full of pictures of

all the available lots. A great little book for the serious collector of Norway's first stamp. 6 x 8" 50 pg.

### Postverk Føroya

*Nordatlant Filateli No. 1/1987*. Interesting booklet about the Faroes and its philately. Special article: "Local Postage in Iceland 1873-1970". 6 x 8" 39 pg. (English)

*Postnummer*. Map and list of postal zones. 8½ x 11" 8 pg.

### S. Ringstrom

*Danish Postal Stationery 1985*. The top reference book about this subject. Covers Denmark, Slesvig and DWI. Exceptional detail about shades, varieties, factory numbers and errors. A *must* book for stationery collectors. In Danish but easy to use. Available from L. H. Hartmann, P.O. Box 36006, Louisville, KY 40233 (\$20.00) 7 x 10" 215 pg.

### Scandinavian Philatelic Library of Southern California, Inc.

*Luren*. An almost complete file of back issues.

*Postal History of US Virgin Islands*. Detailed book. Many interesting pictures of covers. APS publication. 1966 7 x 10" 41 pg.

*AFA Special Katalog 1976*. Covers Denmark, the Faroes, Greenland and DWI. 6 x 8" 280 pg.

*AFA Special Katalog 1981-82*. Covers Denmark, the Faroes, Greenland and DWI. Very detailed on the bicolored issues. 6 x 8" 448 pg.

*AFA Frimærkekatalog Skandinavien 1978*. 6 x 8" 300 pg.

*Nordic Philatelic Brochure*. Information about the various postal agencies. 8 x 8" 16 pg.

*Facit Special Katalog*. 1974-75, 1977-78, & 1986 7x10"

### Sveriges Filatelist Forbund

*Helsingfors Stadspost*. by Anders Emmerfors. A very informative book about the local postal service in Helsingfors. Outlines the various stamps and stationery along with all the varieties. Top quality with many illustrations. In Swedish with English summaries 6½ x 9½" 132 pg.

### Swedish Post Office

*Postnummer*. Postal zone listings. 1983 plus latest supplement. 8 x 12" 180 pg.

*Ett Frimärke Blir Till*. Pamphlet about Swedish stamp production. 8 x 12" 15 pg.

*ABC for Frimarkessamlare*. Pamphlet about stamp collecting. 8 x 12" 16 pg.

### Alan Warren

Of the many Scandinavian philatelic journals, books and articles, the following require attention:

*Stampworld-Hafnia Edition*. Article by Knud Mohr about Danish cancels. An Alex Newall article about early Danish airmail.

*Collectors Club Philatelist 9/10/87*. Outstanding article by Mike Hvidonov about Philately of Finland and the SCC.

*Linn's 10/5/87*. Philatelic history of an isolated island (Bouvet-Norwegian)

*Congress Book 1987*. Robert Stone article: 19th Century US stamps used from the Caribbean-Latin American area.

*Nordia 84*. Catalog of the Nordic stamp show held in Reykjavik 3/7-8/7 1984. 5½ x 8" 192 pg.

*Iceland Cancellations and Related Materials*. A collection of articles translated from the Icelandic Collectors Journal. A very interesting manuscript for *any* postmark collector. Sponsored by the Scandinavian Philatelic Foundation. Edited by the Iceland Philatelic Study Committee, chaired by Wayne Sommer. Translated by Sigrun Tryggvadottir. 1984. 8 x 11" 96 pg.



# The Executive Secretary Speaks

By William H. Lamkin

It is my hope that each and every member of the SCC will have all sorts of good fortune in the year to come. I hope you find that elusive philatelic item you have been looking for and just could not locate. Further, that you will have the where-with-all to acquire same!

Personally, 1987 was a bad year for the Lamkins. We have had sickness, death, family squabbles and other problems, such as not getting to go to Balpex and to California for Christmas! 1988 can not be so bad. It should be a good year for all SCC members who found 1987 coming up a little short.

## Dues Envelopes

With this issue of *The Posthorn*, there is, repeat — there is a dues envelope! After this statement was made in the November issue, the gremlins took over and no such envelope was included. We have that particular gremlin tied up in the backyard now and this should not happen again. Sorry that so many of you were inconvenienced over this little item. Some comments that I have received have been nothing short of ludicrous! I really had no idea that so many of you cared. Here are some samples of the remarks that have come in: “I don’t know if this was an oversight or not —” “Forgive my use of a non-official envelope, please.” “For the life of me, I can not find the dues envelope which was enclosed.” “P.S. No envelope in *The Posthorn*!” “If I had not noticed the red line on the envelope —” “Did not get envelope in my *PH* — this could affect dues collection.” “You make paying hard this year, no envelope!” “Lamkin speaks with forked tongue — he said —.”

I know my tongue is not forked as I could lick twice as many stamp hinges in that case! I hope this puts the mystery of the missing envelopes to rest. Each member should check their records and see if they have paid the 1988 dues. If paid, do not send it again. If you do, I will credit to your 1989 dues. Don’t forget, if you have some spare bucks hanging around, pass them on to SCC for the good of the cause.

## Incentive Offer Extended

As announced in the November 1987 issue, the SCC Board has agreed to endorse an appeal for voluntary donations of additional funds to increase *The Posthorn*’s printing budget. The incentive offered for extra contributions of \$5 or more will be two free 20-word Member-to-Member Ads during the year. Life members are invited to participate. Also, such contributions will be a future “no” vote against a dues increase, perhaps making the move unnecessary next year!

As of Jan. 5, I have received just 288 dues payments for 1988. This is far below previous years. I hope that all will get your dues in before I have to send out my annual snide remarks about paying up! Many of you did not know where to send the dues. This has always been the Executive Secretary’s task and will be cleared up in a forthcoming re-issue of the handbook.

### Attention Dealers

The Executive Secretary has available some USPS business reply cards that can be used in soliciting good members for our club. How about using them in your mailings to your good customers? Think about this and advertise us in your correspondence. These cards are valid only in the U.S.

### Lost Member

We have another lost member this quarter. He is member number 3000, Mr. R. John Hayes. He formerly was with the University of Alberta and his mail has been returned. If any of you know of his whereabouts, please let me know. I want to thank all of you who found Russ Mascieri for me.

\* S \* C \* C \*

## Membership Report

### New Members for February 1988

- |      |   |                    |
|------|---|--------------------|
| 3100 | SANDBERG, Marlin K., 6320½ Adama St., Los Angeles, CA 90042<br>World Wide                               | By: Lamkin 2561    |
| 3101 | MELDGAARD, Jacob, 94 E. Linden Ave., Englewood, NJ 07631<br>Danish Postal History                       | By: Schloss 1956   |
| 3102 | ODDEN, Conrad R., 3501-D Christopher Drive, Wilson, NC 27893<br>Scandinavia                             | By: Lamkin 2561    |
| 3103 | DAVIS, Brice, P.O. Box 10857, 50728 Kuala Lumpur, Malaysia<br>Scandinavia, Southeast Asia               | By: Lamkin 2561    |
| 3104 | BYINGTON, Roy E., 6 Stub Toe Lane, Sudbury, MA 01776<br>Scandinavia, UN, Greece, Australia, New Zealand | By: Gaurdet 1094   |
| 3105 | RANNIKKO, Toivo, 1 Harris, Nahant, MA 01908<br>Scandinavia, World Wide, Military Covers                 | By: Lamkin 2561    |
| 3106 | LACEY, Ms. Dorothy H., 220 Congress Street, Apt. 2A, Brooklyn, NY 11201<br>Denmark, DWI, Faroes         | By: Lamkin 2561    |
| 3107 | HOLT, Robert E., 2811 245th Place, S.E., Issaquah, WA 98027<br>Scandinavia                              | By: Lamkin 2561    |
| 3108 | WINDEN, Arthur E., 11503 Sayanora Ct., San Antonio, TX 78216<br>US, UN, Canada, Norway                  | By: Lamkin 2561    |
| 3109 | LORENTZEN, Kirsten E., 3730 Burns Ct., Ann Arbor, MI 48105<br>Scandinavia                               | By: Lorentzen L-50 |

### SCANDINAVIA

Always a good selection of Denmark, Greenland, Iceland, Finland, Norway and Sweden material in our regular postal auctions, send \$1 to receive sample catalogues of our next two sales. I am sure you will be pleasantly surprised at material offered together with reasonable prices.

PRIVATE TREATY department also has a few vacancies for clients interested in the scarce material of Scandinavia. Drop us a line to let us know your interest are.

### EUROPEAN & FOREIGN STAMPS

PO Box No 1 • Pontypridd

MID GLAMORGAN



UNITED KINGDOM, CF37 5RA

Telephone: 0443 492143



- 3110 MADDIN, W. Robert, 10721 Trappers Creek Dr., Raleigh, NC 27614  
Norway, Astronomy on Stamps By: Lamkin 2561
- 3111 ANDREWS, Albert C. 124 East Bridge St., Berea, OH 44017  
Scandinavia, US, Great Britain By: Melberg 1678
- 3112 SCHEER, Dr. Frank R., 12 East Rosemont Ave., Alexandria, VA 22301-2325  
Postal Artifacts By: Crown 2949
- 3113 BERGMAN, Paul A., 875 Kenzoa St., Haverhill, MA 01830-2315  
Sweden By: Lamkin 2561
- 3114 WOLFF, Lawrence R., P.O. Box 719, Magalia, CA 95954-0719  
Greenland, Iceland, Faroes, US By: APS

**Resignations for February 1988**

- 2536 ROBINSON, Burton W.  
3039 SLAUGHTER, William E.  
2354 ASKGAARD, Kaare

**Deceased for February 1988**

- 3003 BROWN, Arthur J.  
1541 GODBOLD, Edwin C.  
2358 MILLER, Viggo  
0259 BLOCH, Herbert J.  
1215 BACKSTROM, Robert W.

**Reinstated Members for February 1988**

- 2094 LASSEN, Jeffrey K., P.O. Box 2545, Carson City, NV 89702  
2833 JARAKER, Leif, Box 321, S-72107, Vasteras, Sweden  
2574 MILLER, Burton, 850 Prairie Creek Dr., Pacifica, CA 94044

**Address Changes for February 1988**

- 1708 PISILIA, Eric, 200-2D Chatham Park, Dr., Pittsburgh, PA 15220  
1388 MASCIERI, Russell, No. 4 Lambeth House, Moorestown, NJ 08075  
2803 LORENTZON, Lars, 67 State St., Skaneateles, NY 13152  
2382 RIEMANN, Howard C., P.O. Box 1406, Poway, CA 92064-1406  
3036 NEWMAN, Augustus L., 220 Barton St., Pawtucket, RI 02860-1929  
2158 SHOEMAKER, Charles D., 9504 Oakmont Dr., SW., Calgary, Alta, Canada T2V 4W1  
1933 STRANDELL, Clarence A., 11539 Aspenwood Dr., New Port Richey, FL 34654  
2420 MAURER, Robert L., 7725 Primavera Way, Carlsbad, CA 92009  
2485 RASMUSSEN, Celsa Ma., P.O. Box 219, Nanoose Bay, B.C., Canada V0R 2R0  
2658 MARTIN, Jeffrey B., 217 Susan Newton Lane, Tabb, VA 23602  
2629 TJELTVEIT, O. Alvin, P.O. Box 856, Red Lodge, MT 59068-0856  
2798 GRANT, Kenneth B., E11960 Kessler Rd., Baraboo, WI 53913  
1969 ELLENBOGEN, Stanley K., P.O. Box 3605, West Palm Beach, FL 33402-3605  
2066 McKOWN, Michael A., 305 19th St., Pacific Grove, CA 93950-3341  
1711 SIETINS, Udo I., P.O. Box 70170, Tulsa, OK 74170  
2094 LASSEN, Jeffrey K., P.O. Box 2094, Carson City, NV 89702

**Postal Covers**

ESTABLISHED 1972

**MAIL BID SALES \* \* COVERS OF THE WORLD**

19th & 20th Century Postal History — Topical & Thematic including Military — Maritime — Railroad — Air Mail — FDC's — Cinderella — Red Cross — Judaica — Expositions — Sports and Olympics — Postal Stationery — Picture Postcards and so much more!

ALSO: Listing of over 200 US & Foreign Catalogs and Handbooks many at DISCOUNT PRICES, including hard to get imports.

**FOR RICHLY ILLUSTRATED CATALOG SEND \$1.00 to:  
THEO VAN DAM — P.O. Box 8809 — Anaheim, CA 92812**

**If you collect  
Scandinavia  
You should try  
my Auction**

Send for a free copy  
together with a retail  
list of Sweden.

*Olaf  
Linder*

Box 12163  
S-102 24 Stockholm  
Sweden  
Tel: 08-53 46 76



**FACIT**  
*Special 1988*

**NEW!**  
English/Swedish version.

For information contact:  
**Harry Edelman Supplies**  
111 - 37 Lefferts Blvd.  
So. Ozone, Park, NY 11420  
FRIMARKSHUS 1 AB  
S-793 01 Eksand, Sweden



- 1702 LARSEN, James, 1 North Road, Kensington, NH 03833
- 2388 GOLDSMITH, Harry J., 157 Lakeside Dr., Oldsmar, FL 33577
- 1361 GUMBINER, Marshall, 1030 North Fairfax Ave., West Hollywood, CA 90046
- 1157 KNUTSON, Bent, Bredkaervej 2, DK-8250 Egaa, Denmark
- 1775 LADENTHIN, Lawrence R., 2052 N. Seminary Ave., Chicago, IL 60614
- 1636 PAULSON, Robert E., 3220 US 19 North, Lot 417, Clearwater, FL 34621
- 2067 RUNNING Jr., Joseph M., P.O. Box 837, Duncan, OK 73534
- 1810 SAUKKO, Maj. Wayne K., 2102 Madrone Ct., Fairfield, CA 94533
- 2882 SWANSON, Kurt P., 15163 Diana Lane, Houston, TX 77062
- 2854 GRANSTRAND, Richard B., P.O. Box 68, North Granby, CT 06060
- 2881 WALLQVIST, Anders, Mistelvagen 1, 302 44 Halmstad, Sweden

**February Membership Summary**

**November Summary**

Regular Members .....	1015
Life Members .....	48
Honorary Members .....	7
<b>Total Membership for November .....</b>	<b>1070</b>

**February Adjustment**

New Members .....	+ 15
Reinstated Members .....	+ 3
Resignations .....	- 3
Deceased .....	- 5
<b>Total Adjustment .....</b>	<b>+ 10</b>

**February Membership**

Regular Members .....	1025
Life Members .....	48
Honorary Members .....	7
<b>Total February Membership .....</b>	<b>1080</b>

\* S \* C \* C \*

## Member-to-Member Ads

MEMBER-TO-MEMBER ADS are available to SCC Members only. Send your ad and check to H. J. (Pete) Schueter, P.O. Box 75281, Los Angeles, CA 90075. Include your membership number in your ad, but don't count it as part of the total number of words. The first 20 words cost you \$2.00 (minimum) plus 10¢ per word over 20 words.

**SEEKING:** Swedish-American Line Covers for exhibition. Description & price please. A. A. Gruber (1049), P.O. Box 1073, Newark, DE 19715. 173

**WANTED:** Exchange partners for all Scandinavia by intermediate flyspecker. I collect mint, used, new, old, cancels, varieties, booklets, etc. Have plenty to swap. Ron Meyer (2359), Box 391 La Quinta, CA 92253. 176

**DENMARK** — Wanted used bulk 1875-1903 bi-coloured stamps. Send offers with price to: E. Mildenhall, 307-332 Michigan St., James Bay, Victoria Canada V8V 1R5. 174

**FINLAND (1912-1931)** — If you collect "lost territory" cancels, Lapland usage, scarce straightlines, Finnish military cachets, "Saarinens" on cover — send \$2.00 (refundable on purchase) for photocopies. The largest parcel card stock in the world awaits your selection! Jacob Kisner (2899), 254 Park Avenue South, PHF, New York, NY 10010. 173

**WANTED:** Iceland Christian IX covers only. Send photo copy of front and back. Ron Collin (1132), P.O. Box 63, River Grove, IL 60171-0063. 173

\* S \* C \* C \*

### FOR SALE

SWEDEN RING TYPE COLLECTION, Scott #17-51, except 39 and 45. Large used collection mounted on Elbe Governor Pages. Well written up, but should be remounted for exhibition. Consists of approx. 1,400 stamps, 770 are classified by shades and there are 670 plate, printing and paper varieties — many of which have been photoed and enlarged. There also are many unmounted cancels. A few of the interesting items are: #18 black shade, #23 on piece with 5 öre "SAFSJO" 4.20.77, #19 and 23a on piece "STOCKHOLM" 9.12.76, #37 used and mint reprint same plate positions, #40 mint sheet, several copies of #23b on piece with #19, #38 used blocks of 4, 6 & 16, #49 plated with only 3 pos. missing out of 100, 10 öre on 12 öre private surcharge used and on cover. 12 stamps with English "Hull 383" cancel, plus a cover and card.

APPROXIMATELY 80 COVERS, a few interesting ones: #18 two copies on 12 öre envelope to Russia; #23a on folded letter to London; Two 1873 covers to Lowell, Mass., diff. stamps & routes; #40 pair and bisect tied on wrapper; #40 block of 25 on back of registered cover to Holland plus front 2 pairs and single of #44; and a block of 8 of #5ba HELSINGBORG 6.5.92.

Scott B1-10 Landstrom Issue used; mint LH; FDC; Set surcharged on originals mint LH Facit #105A-114A 1000 sets; set of reprints without surcharge Facit 105B-114B mint LH, 12 sets in private hands.

This collection would be very difficult to duplicate and should be sold as a unit. I will hold it intact for a reasonable time after this *Posthorn* is issued before breaking it up.

Complete inventory, description and prices will be sent on request:

Arthur J. Anderson, Jr.  
865 Central Ave., Apt. 1-309  
Needham, MA 02192

\* S \* C \* C \*





# PHILATELY, GENUINE COLLECTIONS AND QUALITY . . .

. . . are well paid for.

*Contact us today and let us discuss the best possible way of selling your stamps.*

*If you are interested in buying at our auctions, ask for a free trial copy of the auction catalog.*

## **POSTILJONEN AB**

Box 4118, S-203 12 Malmö, Sweden  
Tel. 040-722 90, Tlx: 32602 postil s  
Tele facsimilie: 040-72299

SKANDIA

## **POSTILLONEN A/S**

Trommesalen 7,  
DK-1614 Copenhagen V, Denmark  
Tel: 01-22 03 00

# THE BIG\* COLLECTIONS ARE COMING TO NORTHLAND

## WE ARE BUYERS

Throughout 1988 we have been very active buyers. With the uncertainty of auction realizations in today's market, many specialized collectors have come to appreciate how easy it is to sell directly to us. Here's why:

1. We have both the philatelic and market **expertise** to pay full value for specialized material
2. We have the **capital** to make immediate cash payments.
3. Most importantly, we have the **customers** who appreciate stamps and covers of quality.

## WE ARE SELLERS

If you are looking for something special, send your want list and quality requirements. We may or may not be able to respond immediately, but, our computer never forgets.

## WE'D LIKE TO HEAR FROM YOU.

\*Many smaller collections too.

Call Toll Free  
1-800-223-0548 Ext. 148134



**NORTHLAND CO.**  
BOX 34 • VERONA, N.J. 07044

APS  
SCC

