

The



POSTHORN

FEBRUARY 1991



**JKE Study of DK Oval Invert
Stirs Search for More Copies**

(See Page 19)

Journal of the Scandinavian Collectors Club



Scandinavia

- Building fine collections for exhibition, research and enjoyment.
- Offering complete private treaty services for Scandinavian material.
- Providing over 230 titles of philatelic literature for the Scandinavian collector.
- Specialized printing services and papers for exhibition pages and monographs.

Call toll-free 1-800-44-STAMP (1-800-447-8267)
(or 1-919-376-9991)

The Scandinavian Specialist since 1973

Jay Smith

New Address:

P.O. Box 650-SCC, Snow Camp NC 27349
(Formerly of Madison, WI)



The
POSTHORN

Official Publication of the
SCANDINAVIAN COLLECTORS CLUB
Published Quarterly Since 1943
Copyright 1991 Scandinavian Collectors Club

Vol. 48, No. 1

February 1991

Whole No. 186

Table of Contents

New Theory on Varying Electrotpe Sizes in Coat of Arm	
Series Production	Page 3
Icelandic Stamps with Music Themes	14
JKE Study of DK Oval Invert	19
Transfers & Re-entries	20
What's Happening in Finland	23
Letter from Peter B. Corson	25
Scandinavian Literature Notes	27
SCC Chapter 13 Delaware 24th Annual Auction	30
President's Message	36
Executive Secretary Speaks	36
The Editor's Notebook	37
Library News	39
Membership Report	40
<i>Posthorn</i> Index for 1989-90	43
Member-to-Member Ads	48

Deadline for May Issue: April 1, 1991

Editor: Gene Lesney
1139 Los Palos Dr. #5
Salinas, CA 93901-3840
(408) 758-1507

Executive Secretary: William Lamkin
P.O. Box 302, Lawrenceville, GA 30246

Business Manager (Advertising):
John R. "Jack" Day, 2109 Skycrest Drive #4
Walnut Creek, CA 94595

THE POSTHORN (ISSN 0551-6817) is published five times yearly by The Scandinavian Collectors Club. Membership, including subscription, \$15 per year. Contact Executive Secretary for membership & change of address. Advertising rates & terms available from Business Manager. Second class postage paid at Madrid, Iowa 50156. Copyright 1991 by The Scandinavian Collectors Club.

POSTMASTER: Send Form 3579 to THE POSTHORN, Box 302, Lawrenceville, GA 30246.

Affiliate 79, American Philatelic Society
Affiliate, Royal Philatelic Society of

(USPS 603680, ISSN 0551-6817)

Welcome to the Leading Norwegian Stamp Auctions!



Twice a year we arrange a public auction in Oslo as we have been doing for some 15 years. The total turnover has been some NOK 10 millions a year. Each auction contains approximately 1100 lots with starting prices from NOK 100.

Our most expensive item was sold for \$125,000 in 1987; Norway No. 1 in a block of nine from the world famous "Vi King" collection formed by Mr. Jared H. Richter. This is a Norwegian all time high.

The auctions also include top quality objects from many other countries. The market for stamps in Norway is one of the strongest in the world, and this is reflected in the prices realized not only for Scandinavian items. Our computer systems includes some 18,000 customers worldwide and we believe our selling potential would be most interesting also for vendors abroad.



We would be happy to serve you. Drop us a line - or a fax or give us a call for a free copy of our auction catalogue or for further information.

Elisenbergvn 19 N-0207 OLSLO 2
NORWAY. Phone 47-2-441914
FAX 47-2-560404

New Theory on Varying Electrotpe Sizes in Coat of Arm Series Production

By Henning Nielsen, Aalborg, Denmark

Through the years I have collected the Coat of Arms type and the uncertainty about the production process evolved and questions of how many electrotypes were used, for instance, for printing the 20 øre stamps. Therefore, I decided to research this problem myself since nobody else seemed willing.

General Principals

The starting point always is the original die (designed by N. Fristrup and letterpress plates by L. Lauter of H. H. Thiele, printer), which is pressed down into a pliable material such as gutta-percha or wax. Both substances must be mixed with some graphite to become electro-conductive. The impression made in the soft mass is known as a matrix. By placing the matrix in an electrolytic bath with a solution of copper sulphate and a copper plate as the anode, the copper ions cling to the matrix when electro current is turned on. The process is known as electrotyping; and after a brief treatment an unbroken layer of copper coats the matrix. The resulting metallic layer is called an electrotpe when separated from the matrix mold.

This process can be repeated as many times as necessary to obtain a sufficient number of electrotypes for the assembly of a printing plate.

If gutta-percha (a natural rubber-like material) is used the impression must be performed in heated material, for only then can the gutta-percha take the impression of the die. Most materials expand when heated and shrink during subsequent cooling. At normal working temperatures wax

does not require heating. Thus it is understandable that an electrotpe made from a gutta-percha matrix will result in a little bit smaller size than one from a wax matrix from the same die. The difference measured on the final impressions is about 0.3 to 0.5 mm in height on a stamp of 21 mm.

This fact has solved another problem which bothered me for several years. In the earlier period from 1875 to 1878 on bicolor imprinted stamps on wrappers, postal cards and stationery there occurs on some items a stamp variety called the "narrow 4s." These printings also were 0.3 to 0.5 mm smaller than stamps issued after 1878. This indicates that gutta-percha was not used as a matrix in the production of electrotypes after 1878, but most likely before then.

The Coat of Arms type issue, which as a whole was produced after 1882, does not have the problem with smaller electrotypes. Arms types can be divided into stamps with small corner numerals and those with large corner numerals — both finely perforated 14 x 13-1/2 — with later issues of large corner numerals and coarse perforations; and finally stamps similar to the latter with 12-3/4 perforations and the new Crown III watermark.

In this study the difference between small and large corner numerals is used only as a classification.

20 Øre Small Numerals 1882-84

The basic sequence in the production of stamps by letterpress (or typography) is as follows: 1. Die, 2.

Matrix, and 3. Electrotype. In order to understand the correct process it is best to follow the arrow sequence as shown in Fig. 1. A is the original or master die which is mute (without the denomination value); B is the matrix made by pressing the die into wax, consequently a wax matrix; C is one of the resulting electrotypes produced for the various denominations; D illustrates the addition of engraved denominations. During this process proofs are taken with or without the denominations engraved on the oval ribbon connecting the two round black discs and four corner dots, as shown on the electrotype in Fig. 1-C. Such proofs are made for a progressive record and to ensure accuracy at each step of the process. E shows a strip of five 20 øre matrices now with the values added, which as finished electrotypes are used as dies impressed in a plate of wax in an adequate number — not always known. The matrices are assembled in block or strip formats that are conductive throughout the unit; and F shows an electrotype produced in the manner described above. The process may be repeated as many times as necessary to make enough copies for the printing plate, plus a few reserve copies. The 1882 printings were sheets of 100 stamps.

Theory of Author

The A thru E sequence as just described is the theory of the author with a strong probability of being correct. After C in the process the insertions of engraved denominations appears correct because until then the engraver was unable to free (or clear) the area around the numerals to a desirable depth — which is noticeable on both the 5 øre and 20 øre stamps. Many spots of various

sizes are known around the large value numerals.

The proofs without denominations in the ribbon can only occur in the process as I have described it. Also, it was more economical to produce definitive stamps using only one die without denominations, instead of making multiple dies each with its own value. Economy always played a big role in the production of Danish stamps.

20 Øre Large Corner Numerals

Most collectors are familiar with the switch to the large corner numerals on the 1884-97 Second Edition and other design changes. This of course made it necessary to engrave a new die and consequently make new electrotypes. In Fig. 2, I have tried to illustrate my theory as an object lesson in stamp production by letterpress during this period. The system is again: 1. The die; 2. The Matrix; and 3. The electrotype. G represents the original electrotype dies: Into these the denominations are engraved. The original dies from this issue are kept in the Post & Telegraph Museum in Copenhagen.

H are the 15 matrices produced by impressing the die that many times into wax. There may be smaller deviations in the impressions compared to the die, but these are known as minor matrix varieties. The matrices shown have been assembled in a block unit, as shown in Fig. 2H, to form one contiguous electric conductive plate.

Next, the block unit of 15 matrices are processed 16 times and the result is 240 electrotypes (or clichés) of 20 øre as in Fig. 2I. The total number confirmed in the account book entry of type founder Friis dated November 29, 1883: "Delivered 238 pieces 20 øre stamps cut, machined and

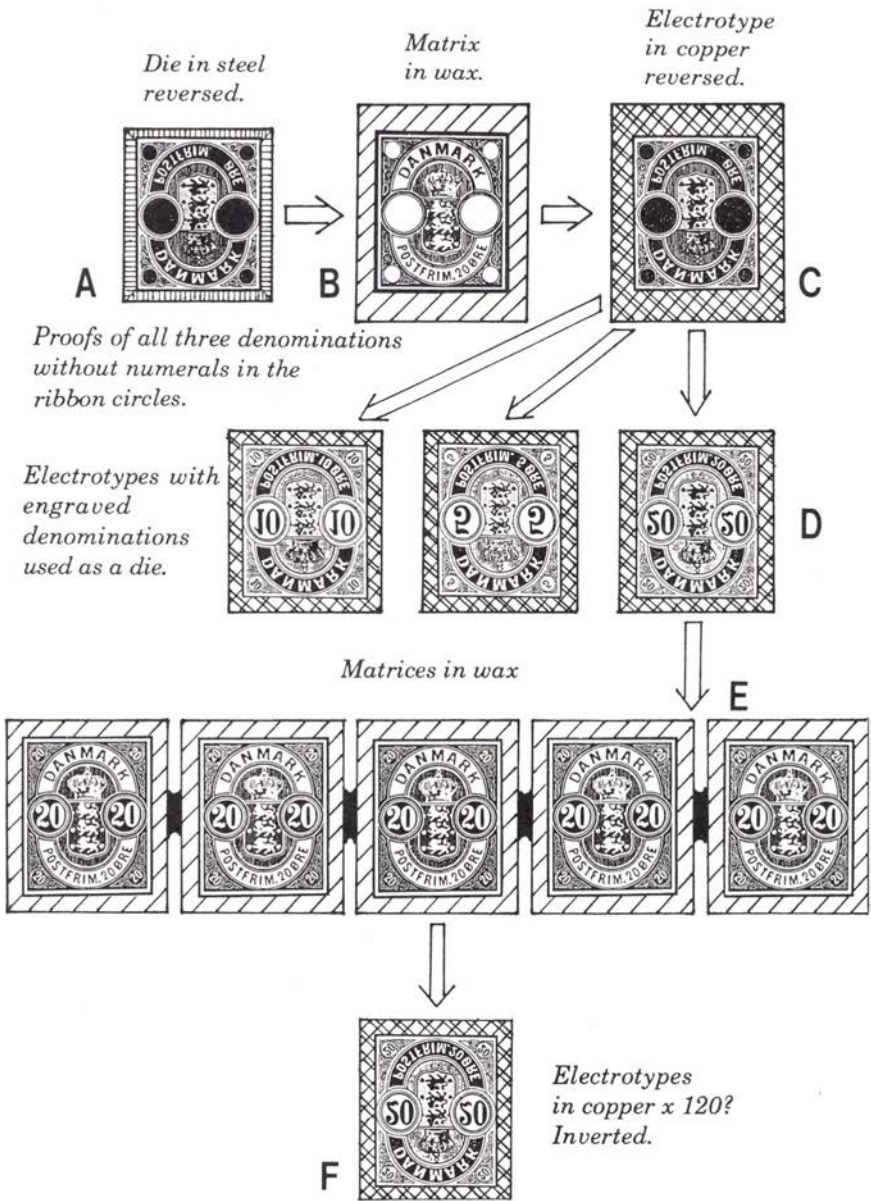


Figure 1

mounted." The two pieces short of 240 may be attributed to sorting out or they may have been taken for another purpose. [This information was found in the papers of then P&T head clerk Christian Svendsen, who two years later became postal inspector and in 1894 the P&T General Postmaster.

My reasoning for the theory of 15 electrotypes and 16 platings to produce the necessary matrices is shown in Fig. 3 which illustrates the occurrence of the varieties of matrix types in the 2x100 stamp stamp printings, where both sheets A and B are known. My diagram shows that the highest average number per printing is 16 and the lowest is 11 pieces. It should be noted that for this printing there were 38 reserve electrotypes, plus two others rejected or used for another purpose.

20 Øre Numerals After 1896-97

After 1897 the electrotypes of the 3rd and 4th Editions of Coat of Arms type stamps were in all probability made as needed. It appears from the fact that Printing 18b was done with entirely new electrotypes on one sheet and old electrotypes on the other that this indeed was the case. I have been able to establish that Printing 18 was composed of four plates each with its own setting but with repeats of electrotype errors.

After the first pressrun about half the electrotypes were scrapped and a new plate was assembled with all new electrotypes. The first run of this printing was listed as Printing 18a and the second run 18b (both with sheets A and B). In this way the new electrotypes were used together with the old ones. I have accordingly divided the used electrotype into two groups: 1.) Those printed after 1896-97, which I

call the Third Edition, and 2.) Those produced after the turn of the century, which I call the Fourth Edition. The only visible difference between the two are the electrotype varieties of which some disappear and others are added. Unfortunately this theory cannot be proven with certainty because we do not have examples of full sheets of the period between Printing 20 of 1897 to Printing 25 of 1900. However, some full sheets (A or B) are known from almost all other printings whereas only Printing 33 is known in both A and B sheets. Therefore some uncertainty exists as to the number of matrix varieties. The material basis for my theory about the production of Coat of Arms type stamps as shown in Fig. 4 is kept in the Danish Postal Museum.

In Fig. 4, K is the original die for the Second Edition. L shows the matrices produced by pressing the die into a large plate of plastic material while maintaining the exact distance between each impression, producing a block of 2 x 5 clichés in a single piece. M represents the block of electrotypes were taken from the earlier process (Second Edition) and soldered together in a 2 x 5 block and reused in subsequent printings. This line of action may explain why matrix varieties continue to appear in all additions throughout the period!

On Fig. 5 is shown my theory about the running electrotype production. The crosses mark electrotype errors. A cross located on the left is an error in the Third edition, to the right in the Fourth Edition. The numbers at the head of each column indicate the 1900+ printings and at the left are numbers that indicate the edition and numbers of electrotype errors. A slash separates Third and Fourth Editions.

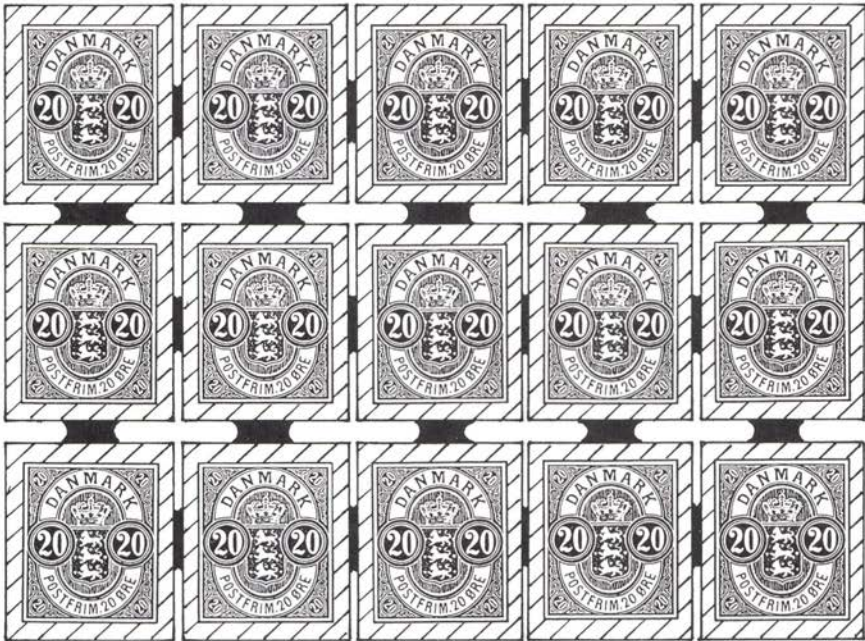
Original die in steel.
Format: 21 x 24 mm.
Height: 17 mm.
Reversed.



G

Matrices in wax

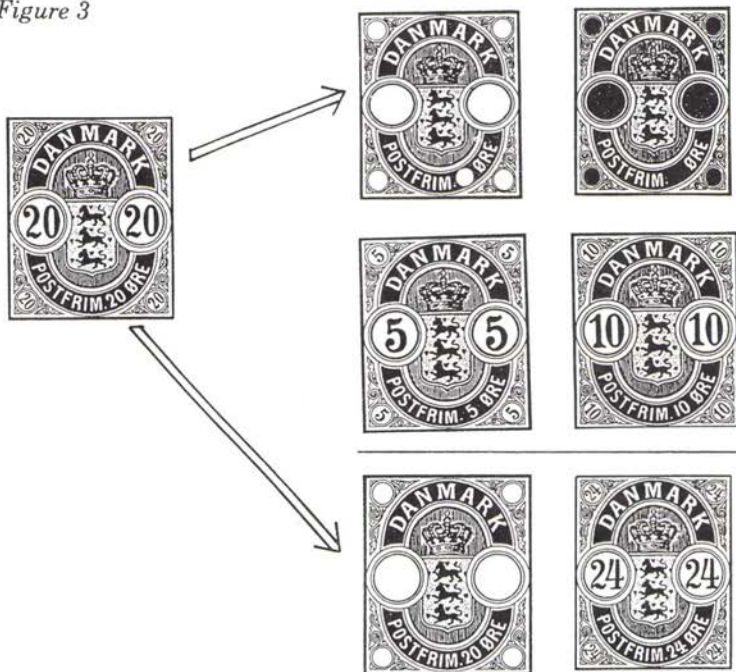
H



Electrotypes
in copper x 240,
inverted.

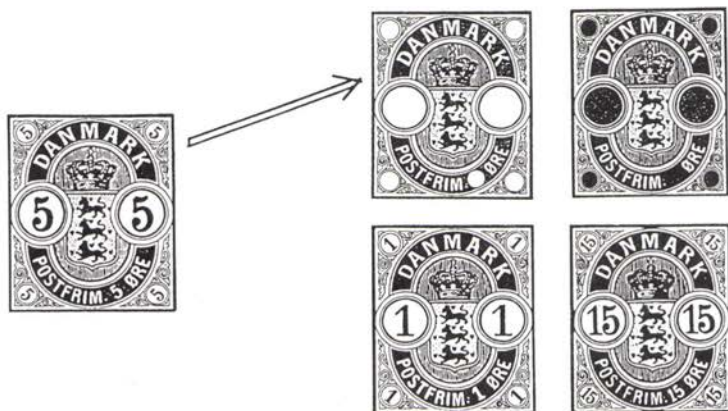
Figure 2

Figure 3



The 1884 Edition

The 20 øre electrotypes are used as dies for the 5, 10 and 24 øre stamps. The method was as follows: All the numerals were scratched or drilled out, afterwards the holes were plugged. Then new denominations were engraved on them. The same process occurred with the 24 øre in 1901.



The 1902 Edition

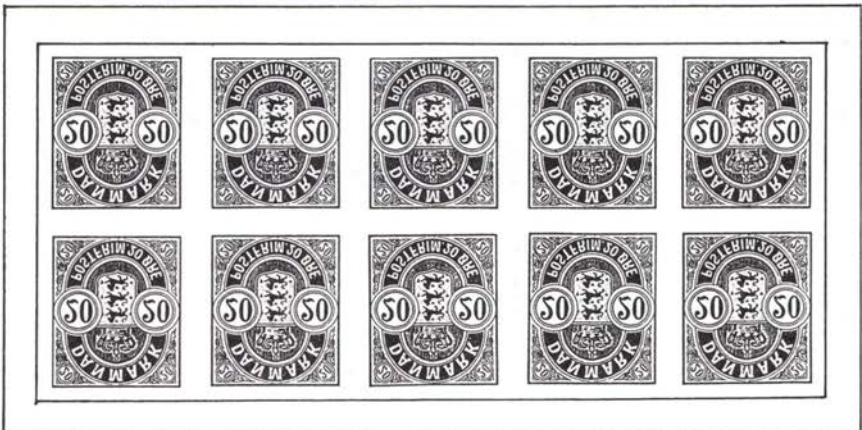
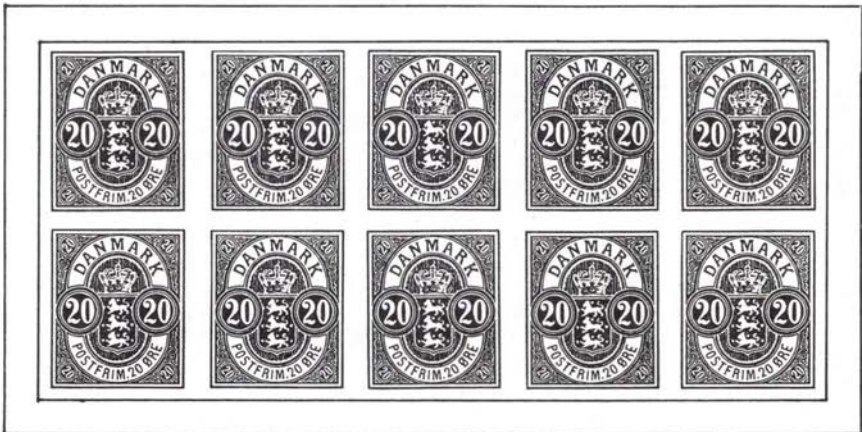
Here the 5 øre electrotypes were used to provide the dies bases for the 1 and 15 øre issues. The procedure was similar to the 1884 reuse process. The evidence of this is illustrated in Fig. 7.

Original die
in steel,
inverted.



K

L Adjoining matrices in wax.



M

Inverted electrotypes in copper.

Figure 4

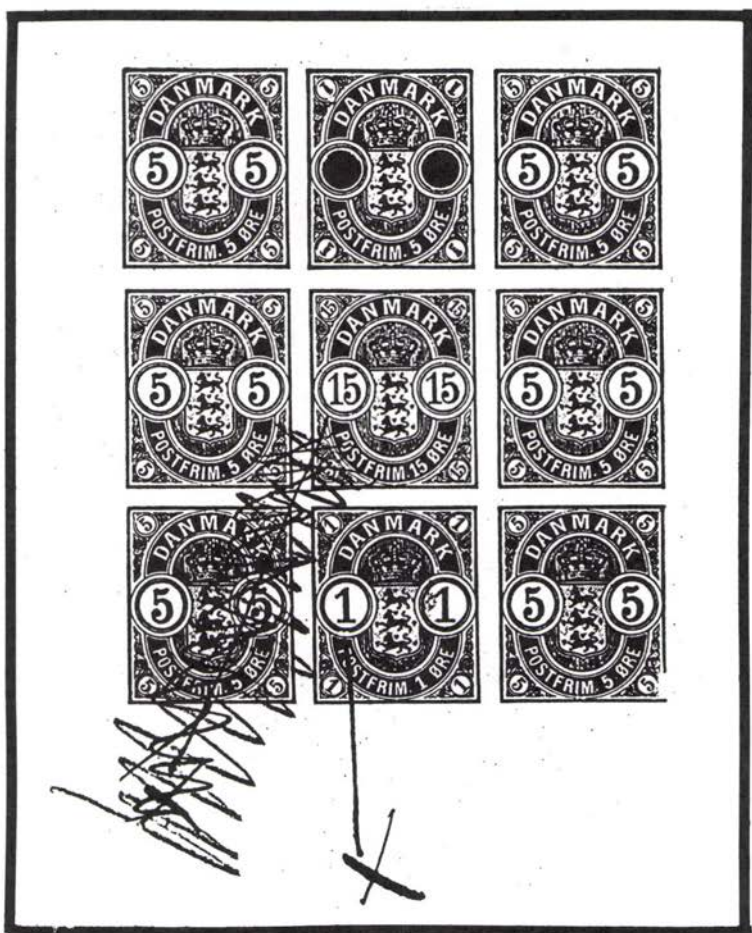
Friis' Working Process

In order to further illustrate the assembly of electrotypes I have shown in Fig. 6 (at the top) how a finished printing is constructed from the electrotypes. This is the "cut, machined and mounted" clichés as mentioned in Friis' account book. The block of 10 shown in Fig. 4 is an

example of a format made up of other clichés of the same kind delivered from type founder Friis to printer H. H. Thiele.

Because the layer of copper forming the surface of the electrotypes was comparatively thin and fragile, the back was first tin-plated when the layer was separated from the plastic impression mold. Then it was

Figure 5



THIS BLACK PROOF of a nine block of 5 øre electrotypes illustrates how the denominations were changed when it became necessary to produce new 1 øre and 15 øre stamps for the September 1902 issue. Note the center vertical row has been reused to create new values. This copy of an in-process black proof rests in the Danish P&T Museum.

covered with a layer of solder to create an electrotype very resistant against the wear of tools and printing machinery.

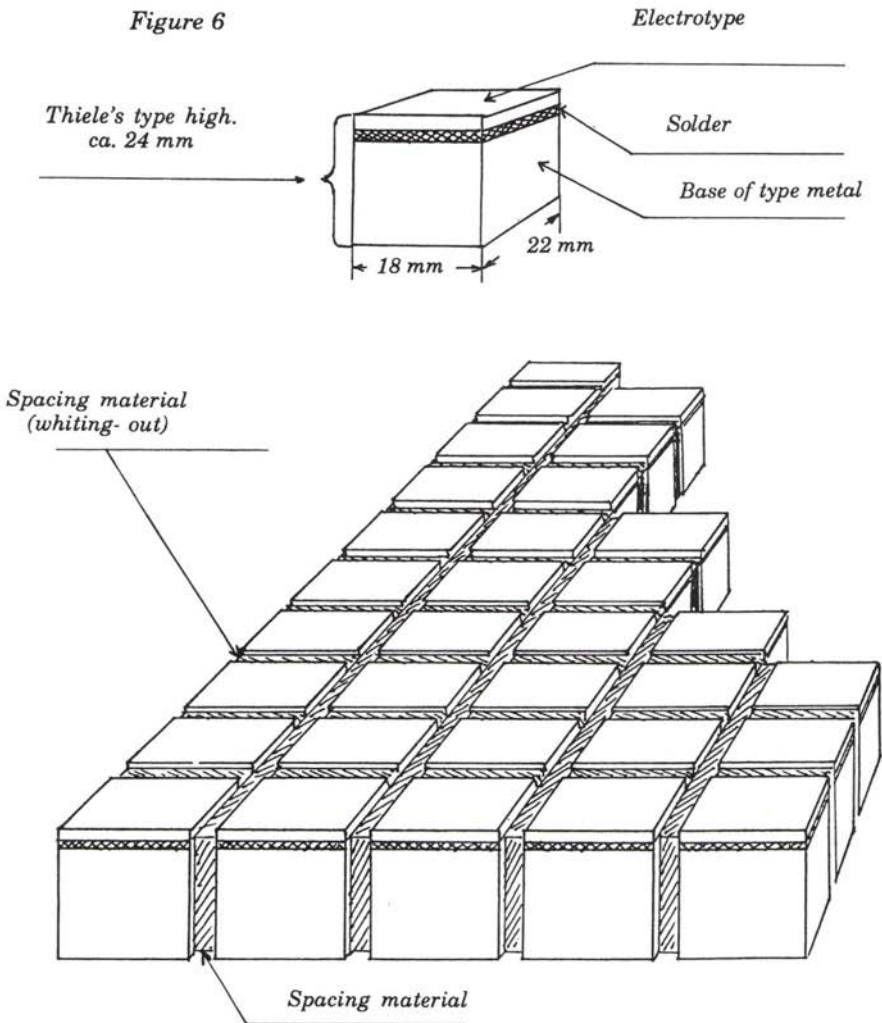
Once fortified, the single electrotypes were cut free, machined to size and soldered to a mount of type metal. This was accomplished on a casting machine in which the electrotype was placed while a base was

applied to produce a resulting stamp cliché exactly type high (0.9186 inches).

Further Work by Thiele

With a printing surface of about 28 x 22 mm for each stamp and its mount, about 3 mm of spacing material would be fitted between single rows (horizontally and vertically) when Thiele was building the print-

Figure 6



Assembly of a printing plate in progress, with 32 clichés shown.

	1900 --01	1901 --02	1902	1902	1903	1904	1904	1905
Printing	26	29						
	27	30						
	28	31	33A	33B	35	37	38	39
3.1/4.1 -		X X	X X		X	X	X	X
3.2/4.2 -		X	X			X	X	X
3.3/4.3 -		X	X	X	X	X	X	X
3.4/4.4 -		X	X	X	X	X	X	X
3.5/4.5 -			X	X	X			
3.6/4.6 -		X		X	X			
3.7/4.7 -	X	X X	X	X	X			
3.8/4.8 -		X		X	X	X	X	
3.9/4.9 -				X	X	X	X	
3.10/4.10			X		X	X		
3.11/4.11	X		X	X	X	X	X	X
.12/ .12		X		X	X			
.13/ .13			X			X	X	X
.14/ .14	X		X			X	X	X
.15/ .15	X		X			X	X	X
3.16/4.16			X			X	X	X
17 ----								
18 ----					X			
19 ----					X	X	X	X
20 ----								
3.21/4.21						X	X	X
22 ---							X	X
23 ---			X			X	X	X
24 ---	X		X			X	X	X
25 ---	X			X		X	X	X
3.26/4.26						X	X	X
27 ---						X	X	X
28 ---	X					X	X	X
29 ---							X	X
30 ---							X	X
3.31/4.31			X			X	X	X
32 ---					X			
33 ---						X	X	
34 ---						X	X	X
35 ---	X	X				X	X	X
3.36/4.36			X				X	X
37 ---	X					X	X	X
38 ---	X						X	X
39 ---					X			
40 ---								
3.41/4.41				X	X			

Figure 7

ing plate. This was done with a so-called whitening-out as shown on the lower area in Fig. 6. The drawing shows only 32 blocks to present the concept of the construction of an unfinished printing plate.

Every time a new supply of stamps was ordered such plates were assembled from loose blocks of electroplates with blind spacing in between. This method caused the setting of each printing to be generally different and it presents philatelists with the challenge of trying to plate the single stamps together in their correct plate positions. Incidentally, the spacing material or whitening-out isn't supposed to be visible, but if that happens it is known as "pick."

Even if there are not any big "errors" in the final printings, the method as outlined was used during the entire Coat of Arms type period. The illustrations accompanying this article may raise some questions, for instance why are some clichés depicted upside down? The simple answer is that both dies and the electrotypes are inverted images of the finished stamp; and while we normally read from left to right, the illustrations correspond with the way the typographer works. For example the name DENMARK inverted is easier to read by the printing trade when upside down and mirrored.

Further Explanations

In explaining the 2nd Edition, I mentioned that two electrotypes were missing from the 240 made. When only 16 pieces of matrix type 1 (M1) exist and this number is not found on other types, the answer may be that some reserve electrotypes were withheld to make other Coat of Arms type denominations of 5 and 10 øre. This might be accomplished by removing

the numerals to replace them with other denominations, instead of engraving new numerals. It is entirely possible that before sending the material to the printer, type founder Friis withheld two electrotypes for this purpose. Evidence proving this theory can be found in the Postal Museum where color proofs of the 24 øre stamp made with the original 20 øre electrotypes can be found. It is in the denomination ribbon where the proofs disclose the evidence that the 20 øre electrotypes provided the base.

Later, similar findings appear on the 5 øre electrotypes which prove that they were used to provide the bases for the 1 øre and 15 øre stamps. The P&T Museum has the black proofs which attest to this denomination change on the ribbon portion of the 5 øre electrotype. There are also some black proofs in private hands. The process is shown in Fig. 7.

The figures shown are all drawings reduced in size. They are not prints of original dies or electrotypes unless expressly indicated.

Finally, I wish to thank Erik Jensen, the Director of the Danish P&T Museum, for his great patience and help; to Erik H. Hansen, a typographer in Aarhus, for technical assistance, and last but not least Oluf Pedersen for his invaluable help and support during my work with the Coat of Arms type.

References

- Danske Postfrimærker 1851-1901* by O. Koefoed.
 "H. H. Thiels Bogtrykkeri 1875." *NFT* 1978, No. 3.
 "Gamle Nyheder," by Erick Hansen. *NFT* 1982, No. 5.
 "Tekniske Fejltagelser," by Erik Hansen, *DFT* 1989, No. 3.

* S * C * C *



Icelandic Stamps with Music Themes

By Helen G. Sommer

A study shows that Iceland has fewer stamps related to music than any other Scandinavian country; also it reveals that only native born Icelanders are so honored.

The first stamps issued relating to music honor the centenary of the birth of Matthias Jochumsson (*Scott* 195/98), Fig. 1. He received no schooling until his late twenties, but was known as a "grand old man" of Icelandic letters. He was a clergyman and poet who wrote a history of Iceland and became famous for his translation into Icelandic of the works of Shakespeare, Ibsen and others. His paraphrase of the Biblical quotation: "A thousand years in Thy sight is but as yesterday when it is passed," resulted in the song "Lofsongur." It was used on many occasions and adopted when Iceland celebrated the 1000th anniversary of its first settlement.

It officially was designated as the national anthem in 1944 when the country became a republic. The song bears the title "O God Vorslan," which appears in the first verse. Matthias Jochumsson died at the age of 85 in 1935.

Music for the anthem was composed by Sveinbjorn Sveinbjornsson, who was born in 1874. The stamp honoring him was issued on Dec. 12, 1979. Sveinbjornsson lived the greater part of his life in Scotland where he was a teacher and singing master. He died in 1927.



Fig. 1

Two other Icelanders were honored in the same issue, Bjarni Porsteinsson (1861-1938), and Petur Gudjohnsen (1812-1877), (*Scott* 522/24), Fig. 2. Bjarni Porsteinsson was a composer and author. He collected and published Icelandic folksongs. Petur Gudjohnsen was an organist and hymnbook author. There is very little known about these two composers.

Our next stamp, issued Nov. 16, 1965, honors Einar Benediktsson, Fig. 3. He was both a poet and lawyer who lived many years abroad. His claim of fame was a volume of folksongs entitled, "Meerslider Für Männerchor," published 1933 in Leipzig. Upon return to his homeland he bought the former French Consulate building and named it Höfði House. It will be remembered that this was the meeting place in 1968 of the two heads of government: Reagan and



Fig. 2

Gorbachev. Legend says the house is haunted by the ghost of a young girl, Solborg, whom Benediktsson believed was pursuing him. She was arrested for a crime (history does not say what) and, as a young lawyer, Benediktsson was to have questioned her prior to her trial but she committed suicide before the interrogation could take place. Some of his poems have been set to music. They are recorded by the Men's Chorus of Reykjavik. He died at the age of 76. There is a statue of Benediktsson at Miklatun near Kjarvalsstaðir Art Gallery in

Reykjavik, the work of the sculptor Asmundur Sveinsson.

Although a small country, Iceland has many churches scattered throughout and in the larger cities some very beautiful cathedrals: Reykjavik, Akuryri, and the oldest and perhaps the most famous historically, Skalholt in southern Iceland. Some have very fine stained glass windows and it is in this area we find our next stamp related to music, issued June 11, 1974. It was in honor of the 300th anniversary of the death of Hallgrímur Petursson, a hymn writer and

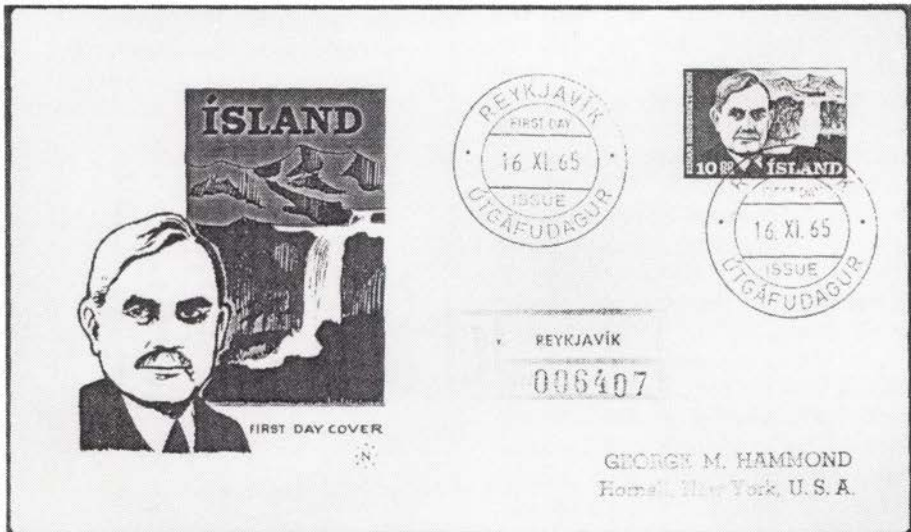


Fig. 3



Fig. 4

priest at Sauerbaer in Hvalfordur, near the whaling station.

Hallgrímur Petursson wrote the Passion Hymns which have been reprinted over 60 times in all and his funeral hymn has been sung over the graves of every Icelander for nearly three centuries. He is often compared to John Milton, the English poet. Hallgrímskirkja, the largest cathedral in Reykjavík, bears his name. He was born in 1614 and died in 1674. The cathedral has been under construction since 1945 and is almost completed. The stamp honoring Petursson shows a stained glass window with three figures from a stained glass painting by G. Helgadóttir in the Hallgrím church at Saurbaer, Fig. 4.

All the composers and poets mentioned thus far have had their songs recorded in a series of albums by the Men's Chorus of Reykjavík to honor the 1100th anniversary of the settlement of Iceland. The first album contains the national anthem and also a poem of Benediktsson set to music.

The European Year of Music 1985 was a bonanza for stamp collectors specializing in music. Iceland issued two very beautiful, as well as educational stamps May 3, 1985, (*Scott 606/607*). They are the Europa issue and both bear the logo of the four post horns in a circle with the letters CEPT. The first stamp shows a lady in the 18th century Icelandic dress. She is holding a six string instrument called a Langspil. It is a very old instrument and was used to accompany singers. First mention of it is in 1700 and is continued in popular use until the turn of the century. It is still used in many parts of Europe but under various names. Sweden calls it a "hummel" and in Norway it is known as a "langleik." The number of strings varies too, in Iceland it has three. The way of playing differs from that in other countries. In Iceland it is always played with a bow held in the right hand, much as the violin today.

The second stamp of this issue shows a man seated playing the Icelandic violin. This was a popular instrument until the 19th century as an accompaniment for singers. The instrument is a long case open at



Fig. 5

the bottom with holes at one end where pegs are inserted and strings attached. The two wooden pegs are used to tighten the strings. The bow is shorter than the usual violin bow and fitted with horse hair. The picture shows the peculiar way this instrument is played, Fig. 5.

Two Christmas stamps were issued Nov. 16, 1982. This was only the second time such special stamps have been issued in Iceland. A competition was held and a total of 76 designs were submitted. The winning designs were done by Triggvi T. Tryggvasson. One shows three birds and the other three bells. Music in the background of both stamps is from the composer Sigvaldi Kaldaloin. He was a country medical doctor around the turn of the century (1881-1946). The song is a hymn and the words (not shown) from a poem by Einar Sigurdsson, "The Night Was Such a Splendid One."

The opening bars are shown on the bird stamp and the closing bars on the bell stamp (*Scott 565/566*), Fig. 6. The music was originally in six flats, but if you examine the stamps you will see they show one sharp, the transposition to one

sharp was done, it is said, to make it easier to play for the less experienced organists in the remote areas of Iceland. This information came about through correspondence with a native Icelander who has been a church organist and schoolmaster for over 40 years.

The albums referred to earlier of the folksongs of Iceland include those of Sigvaldi Kadalons who composed the music used on the Christmas stamps. He is one of the oldest composers of Icelandic folk music and much revered by the Icelanders — perhaps one day a stamp honoring him will be issued.

Unless one has been overlooked, we now have a "baker's dozen" Icelandic stamps related to music.

If any SCC member would like a copy of the music on the Christmas stamp, a #10 SASE addressed to me will get the song to you.

Research sources used:

Scott and Facit Stamp Catalogues
ATA compiled Studies of Music and Stamps

Stamps and Music by James Watson, Chpt. 11

Groves Encyclopedia of Music
Iceland 874-1974

* S * C * C *



Fig. 6

The Scandinavian Specialist

Whatever you are in search of, you will get surprised at our service and our possibility always to give you an offer from our comprehensive stock.

We supply classic as well as new stamps, and anything within covers, cancellations and curiosities.

Our firm has existed for more than 50 years. You can count on honest and correct treatment.

Want List Service according to all catalogues.

Therefore: Contact us,
we shall be pleased to send you a selection for approval or copies with prices.

ROBERT BECHSGAARD STAMPS

Julius Thomsensgade 7 . DK-1974 Frederiksberg C.
Denmark

Tlf. + 45 3135 6832 - Fax + 45 3135 6232

JKE Study of DK Oval Invert Stirs Search for More Copies

Since the København Philatelists Klub acquired the only known copy of Denmark's inverted oval 8 øre bicolor and had it studied by the JKE Group, the findings have stimulated collectors into re-examining their holdings for possible additional examples of this unique stamp. This was explained at ARIPEX in Tucson, AZ, by Hans Ehlern Jessen, who was the SCC's guest speaker at the annual convention held there in late January.

Following Jessen's intriguing illustrated talk of "Danish Postmarks and the Work of the JKE Group," Jessen told about the oval invert's particular characteristics and how easy it can be overlooked by inexperienced collectors.

At first glance a genuine oval invert appears to be a stamp with an inverted frame. And the oval also appears normal in this accepted format, which is not unusual among the øre bicolors. If, upon further inspection the stamp also shows and Crown II watermark inverted, it IS NOT the inverted frame version but quite possibly the rare normal frame with an inverted oval.

The major error stamp is from the April 1887, 42nd Printing which *AFA Specialkatalog* lists with light yellowgray frame and tile red oval. Colors have been known to fade or otherwise change over the years, therefore slight color variations may be encountered. It is only one of 79 printings of the 8 øre AFA no. 25 stamp produced between 1875 and 1895 with varying colors of frames and ovals, basically gray and red bicolors.

Perfs Present Proof!

Also for the record, this oval invert was produced during the middle of two decades in which no other Danish stamps were printed (mistakenly or otherwise) with inverted watermarks. More importantly, the printing occurred during a period of continuous usage of the K-II Line Perforation Machine. All stamps perforated 14x13-1/2 by this unit produced a rather unusual sequence of three perforations on the top of position no. 5 — now the key to positive identification of a genuine copy of the 8 øre oval invert. It is known that at least 100 copies of this stamp were printed and perforated! Yet only a single used copy is known to date.

Most of the stamps in this 42nd Printing were produced in two Arks (sheets of 100). The oval invert appears in Pos. 5 of B-Ark (to the right of the pair). The only inverted frame stamp in this printing occurs in Pos. 97 on A-Ark (left).



ARROW POINTS to arc making sequence of point-flat-point-perfs

Transfers & Re-entires

By Allen Warren

Norway Collector Profiled

In the September/October issue of Stamp Mail, published by the British Philatelic Federation, a brief sketch is given of Norway specialist and former SCC member R. Geraint Jones. He has been involved in various committees of the Federation since its founding in 1972, including the finance, awards, accreditation, and home affairs committees. Jones currently serves as chairman of both the Congress and the International committees.

Jones specializes in Norway, and in particular the pre-adhesive postal history of 1744-1844. He was a founding member of the Scandinavia Philatelic Society as well as the Norwegian Postal History Society, and is a Knight of the Blue Lion in the Bergen Philatelic Society in Norway.

The Federation Internationale de Philatelie (FIP) agreed at the New Zealand show to develop a code of ethics with respect to the issuance of souvenir items in conjunction with these international shows. FIP will also review the "passport" concept at these shows, which was first introduced at INTERPHIL 76 and has since become quite popular with visitors.

At both the London and New Zealand shows, FIP authorities examined entries with respect to fakes and forgeries. They are cracking down on this requirement, while at the same time trying to develop some video educational tools for use by collectors.

NORDIA 91

The annual Nordic country show will be held in Reykjavik next June 27-30. The jury is comprised of Erik Hvidberg Hansen and Toke Nørby of

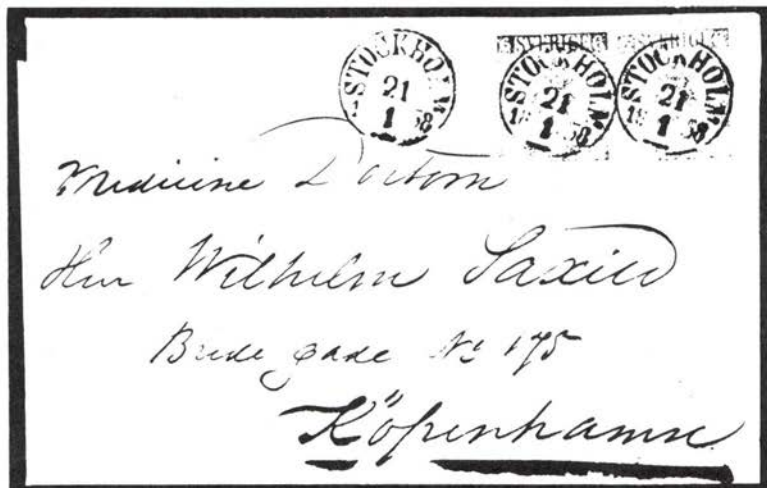
Denmark; Juhani Olamo and Juhani Pietilä of Finland, Arne Thune Larsen and Per Kindem of Norway, Bengt Bengtsson and Hasse Brockenhuus von Löwenhielm of Sweden. Representing host country Iceland on the panel are Eidur Arnason, Halfdan Helgason, Jon Adalsteinn Jonsson, Olafur Eliasson and Sigurdur R. Petursson.

Book 2 for the show has been released by the organizing committee. It contains color photos of two ship letters from Iceland around the turn of the century, as well as invitational articles by Gudjon Fridriksson and Sigurdur H. Thorsteinsson.

Herbert T. Pritchett

SCC member and founding member No. 1 of the Scandinavia Philatelic Society of Great Britain, Herb Pritchett, passed away last July. Herb helped to start SPS and remained a driving force in the organization for many years, serving as Secretary/Treasurer, Treasurer, and Auction Chairman. Herb had many contacts throughout the Scandinavian philatelic community and traveled frequently to Scandinavia to attend exhibitions.

Herb was an editor of the Society's *Scandinavian Contact* and contributed articles to many philatelic journals including *The Posthorn*. Many SCC members were pleased to host Herb and his wife Dolores when they traveled to the U.S. and Canada. We will miss his newsy letters and his general enthusiasm for Scandinavian philately.



Sweden 1855 6sk, two, on cover to Denmark, brought \$18,400 in our March 15, 1990 sale of Worldwide Stamps and Covers.

We frequently offer Scandinavian material in our sales in Zurich and New York. If you are interested in buying or selling, contact Tor Bjork in our New York office.

For information about catalogues and subscription, please contact Christie's Stamp Department.



CHRISTIE'S ROBSON LOWE

502 Park Avenue
New York, N.Y. 10022
Telephone: (212) 546-1087

8 King Street, St. James's
London, SW1Y 6QT, U.K.
Telephone: (071) 839-4011

SCANDINAVIA



frú Þinnisköld, at Vesturgarði.



Kalaallit Nunaat · Grønland · Greenland · Grönland

Frímarki nappersúkkur · Frímarki hefte · Stamp Booklet · Briefmarkenheftchen · No.1



Free Price lists are available for all Scandinavian countries.

Tell us what your collection interests are, and what catalog you use.

Jensen & Faurschou
St. Gråbrødrestreæde 3-5
DK-5000 Odense C
Denmark

Phone : +45 66 11 35 58
 Fax : +45 66 12 63 77



What's Happening in Finland

By Mike Hvidonov

Jussi Tuori Re-elected

It is pleasant to start this column with Good News. Mr. Tuori, who had some obstacles cast in his way during the initial services as President was recently re-elected. I am pleased I predicted that Mr. Tuori would get his teeth into the problems and come out a winner. Our congratulations to the President Re-elect and to those sound members who voted intelligently.

Finland's Auction Rules

It was both interesting and different that the new rules for auction procedures in Finland were prepared by the Finnish Philatelic Federation. It is purported that the auction houses throughout Finland are in concurrence with the terms as set forth. It would require too much space to detail them, but it appeared that some number of bickerings and/or misunderstandings were spellout out so that misunderstandings will be lessened.

The "stickout" that caught my interest in the rules was that, if and when the auctioneer finds a lot that is a forgery; or is regummed or reperfed the "patient" in question is to be brought to a Committee of the Philatelic Federation who will examine the item and notify the seller that the lot submitted is bogus. I am not certain of the procedure thereafter but assume that the item might be marked in accord with the findings to get it out of the auction theater in Finland.

I always sigh and say "It can't Happen Here." The excuse given in our backyard seems to be, "We are too Big a Country to Do This."

Gum

The accent on OG sponsored by collectors who want "virgin" gum has created the predictable monster. Many experts will not authenticate gum, especially on modern items. It is suggested that some of the collectors who have paid through the nose for OG really own regummed material and will never get their money back. Happily *Linn's Stamp News* and their progressive Editor have taken a stand. "Offering regummed stamps without appropriate description will be grounds for the withdrawal of advertising privileges" reads the closing paragraph of their Advertising Policy. I am happy that the publication has started the ball rolling. I wonder who will join them?

Ebel Germany Defunct

The end of one of the great philatelic auction houses materialized, according to Mikko Ossa's October *Collection News* (*Keräilyuutiset*), formerly owned and built into a superb business by Benno Krell, a dynamic man who traveled the world-over to acquire material for Ebel and ran the sales to perfection. It appeared that the new ownership people could not get enough of the excellent material sought in the market today. Krell's friends are

asking for his present address. Should anyone know, please drop me a line. My address is in the SCC *Posthorn* staff list of this issue. Thanks.

New Red Cross Stamps

From *The Collection News* we also learn from Mikko Ossa that some of the new Red Cross stamps will be produced on paper of inferior substance which can make for difficulty when the stamps are separated. Mr. Ossa states that this substitution has been made before in the following printings: The 'Monument' series, *Norma*: 189, 190, and 191 of 1932 and the 'Icon' stamp of 1985, N: 973. So, I suppose the word is to be careful when you pull the stamps apart.

A Special Finnish Exhibit

An interesting, if not diverse Exhibit, took place in Helsinki from November 2-4. Sponsored by the Finnish Philatelic Society it enjoyed the premises of Helsinki's fine Exhibition Hall, Messukeskus, on the fringe of Finland's capitol city.

Suomen Asema

This short title literally means "Finland's Station." I gather that the theme reflected the Exhibits of Rail Road Postcards that were on display in the competition. Some of the judges, it is said, were not happy with the efforts from a proper display viewpoint and said as much. There were, of course, a few that were well presented.

Welcome to the Free World of Philately

If I had my "druthers" this event would have been promoted by the heading above, for these reasons: The planning committee, was headed I trust, by Messrs. Rahiala and Kaj Hellman, two Finns with warmth and intelligence who rate accolades.

If nothing had gone right during the entire three-day affair the committee had successfully justified the reason for choosing the path taken by virtue of the following: Russia, and the three Baltic States: Estonia, Lithuania and Latvia were invited to participate in a Class A show outside of their respective borders for what may have been the very first time. What a thrill it must have been, for the delegations who attended from those countries, to be a part of an "uncontrolled" scene in a country that had fought long and hard to achieve its own Freedom.

This was a Class event engineered by people of substance who exhibited Class. In the final analysis, none the matter, what may have been right or incorrect during the short term of the exhibit the reason for the effort has to be both admired and praised!

The Exhibit

There were, according to reports some 400 frames with a nice group of 10 dealers who purportedly did well in sales. Those that I saw were smiling. *Suomen Postimerkkeily* presented an auction which also was very successful.

A few exhibits were beautifully mounted and with taste. As a matter of fact I did not feel that any deserved to be criticized in a negative manner. There were no collections with "cannon" (high priced) material but much of the more reasonable stamps and covers were of pretty good quality . . . just as they should be. All the invited countries (I believe) sent delegations. Almost 30 people arrived from Estonia.

About 2200 visitors attended which I heard was close to the audiences that recent Topical and Postal History Exhibits had boasted. One editor noted that they seemed to have had an older group of people, like yours truly, who found interest in the older types of stamps. The younger crowd probably would have less interest in Karjala and allied areas.

IMPORTANCE!

A fair amount of justified criticism once again has come strongly from Exhibitors concerning the rationale of those who judge on FIP's most questionable rule, concerning the 20 points for the Judges to make or break the exhibitor on the on the basis of the Judges Opinion as to whether or not your exhibit is important. This asks for a personal opinion, we thinking people say. The judges are there to evaluate a collection and should have no comment on what a person has collected and is showing. If 'importance' is to be considered then a committee, without judges, should decide this after study and tell the Exhibitor that the collection does not belong in the Exhibit before they accept and hang the display and before they take their money. It is not proper to accept fees if the Exhibitor does not have the right to have as good a chance as the next guy (or lady) exhibiting.

Judges seem to have enough problems according to complaints from all over the "FIP Count World" without providing them with a segment of decision that they should not have to cope with every time they judge.

Any letters to me supporting the perfection of the category known as "important" will be regarded as UNimportant and most hastily dropped into my round file (Wastebasket). I have read and heard from those who support this untenable, inexplicable view that is hurting rather than promoting philately.

* S * C * C *

Scandinavian Collectors Club

Dear Friends:

I am resigning my membership this year with sadness. Over the past decade my eyesight has changed sufficiently that I do not have the same enjoyment in philatelic studies which existed previously. Earlier this year I finally sold all of my Finland collection and I now am out of the Scandinavian philately area.

I would like the current SCC officers to know how much SCC has contributed to my enjoyment of Finland philately. It has been nearly 30 years since I joined SCC. I don't remember the exact year, but Alan Warren and I were both part of the SCC Philadelphia chapter in the early 1960s. In recent years, the articles by Michael Hvidonov have been a strong boost to Finland collectors and I have appreciated them very much.

The society has my strongest best wishes for the future. I would also like the officers to know that there are many, many members of SCC who appreciate the countless hours of volunteer time spent in maintaining SCC, even if we never take the time to say so.

With thanks to all of you,
Peter B. Corson
North Carolina

LARS TORE ERICKSSON

Frimärksauktioner

Box 250, S-391 23 Kalmar, Sweden
Tel: 0480-150 90 Postgiro: 65 63 59-7



**INTERNATIONAL
STAMP AUCTIONS
TWICE EACH YEAR**

SPECIALISTS IN SCANDINAVIA

**We may not be the biggest . . .
but we HAVE got the know-how!**

Contact us today so that we can discuss the optimum
way of selling your stamps.

If you are interested in **BUYING** at our
auctions, please ask for a free catalogue.

We look forward to hearing from you!

LARS TORE ERIKSSON
PO Box 250, S-391 23 Kalmar, Sweden



Scandinavian Literature Notes

By Alan Warren

Registered Mails

In the September issue of *Dansk Filatelistisk Tidsskrift* Niels Klotttrup writes about registered letters in the Danish domestic mails during the period 1875-1902. In the same issue Erik H. Hansen discusses the burelage or underprint used as a deterrent to fraudulent reuse of the classic Danish stamps, and Jens Jensen write about the U.S. postal service in Greenland and recent mail from the Thule Air Force Base.

The September issue of *Svensk Filatelistisk Tidsskrift* carries many reports on the Nordia 90 show in Lund. In the October 20 issue of *Stamp Collector*, Scandinavian scene columnist Christer Brunstrom describes the 1912 Childrens' Day stamp of Sweden which was the country's first air mail stamp. The August issue of *Philatelic Reports* from the FG Nordische Staaten in Germany has a short item by Günter Tölcke on airmail to and from Bornholm, Denmark. The study group on Faroes published an article by Bernd Fiedler on the registered mail labels of that country.

In the same issue Rolf Dörnbach lists the postal stations in Greenland, and Jürgen Tiemer continues his series on the parcel stamps of the Norwegian rail systems.

Sweden Error or Proof?

Donna O'Keefe, writer and editor for *Linn's Stamp News*, has published her fourth volume in the series of books *Philatelic Gems*. Of

Scandinavian interest is her discussion of the 5 öre brown Oscar II of 1891. The stamp was issued in green color, but nine copies exist in brown, one of which is used. While some catalogs list it as an error of color, SFF feels it was a proof, printed and sent to foreign postal administrations.

In September 29 issue of *Stamp Collector*, Russell Anderson describes his frustration at not being able to find out about some curious Norwegian labels from the standard and even specialized catalogs. After writing to the Directorate General of Posts in Oslo, he was referred to Karl Sanne's *Norsk Eksilpost 1940-1945*, which was translated and published in English by the Scandinavian Philatelic Foundation. Sanne describes the red, buff, and black labels which contain the wording "Norsk Feltpost," "Norwegian Field Post," and "Letter Seal."

The labels were issued by the Norwegian Field Post Office in England during WW II, and were intended to seal poorly sealed mail from military service personnel. The labels are found in several color varieties and tête-bêche format. In the September issue of *Scandinavian Contact*, L.E. Freestone provides information relating to WW II postal history in Finland, beginning with a listing of the Field Post Offices during the Winter War 1939-40.

In the same issue, W.J.D. Annand continues the series on printing and flaws of the three

Oleson Scandinavian Stamps

PO Box 14815 Greensboro, NC 27415

Quality!

Stamps

Booklets

FDCs

New Issues

Varieties



**- Free Price List -
We also buy.**

crowns definitives of 1939, and Peter Hellberg writes about recent Swedish TPO postmarks. In the issue 2/1990 of *North Atlantic Philately*, Olafur Eliasson writes about the new Icelandic booklet stamps from a thematic point of view. Kai Nielsen and Kristian Hobballe present the first part of a series on the special cancellations of the Faroes, and Hobballe also begins a series on the O.A.T. markings found on covers from Iceland and the Faroes during WW II.

Registered from Spitzbergen

In the October issue of *Het Noorderlicht* from Netherlands, J. L. Jvangean illustrates a number of registered mail labels from such places as Longyearbyen, Advent Bay, Kings Bay, Ankershamn and Jan Mayen. In the same issue, J. A. Konings describes usage of several 3-ring numeral cancels of Denmark. In the

October *Nordisk Filatelistisk Tidsskrift*, Max Meedom describes more plate flaws in the bicolor issues of Denmark and DWI, and Svend Hovard discusses several numeral cancels of Denmark used in conjunction with RPO cancels in the period 1863-1884.

The October issue of *Svensk Filatelistisk Tidsskrift* contains an article by Karl-Erik Stenberg on prestamp covers of Sweden. Mats Gustafsson and Bo Erik Stavenow write about two of the official postal cards of Sweden, and Harry Salomon illustrates a Courier Post Letter sent within Sweden's army.

The October issue of *Dansk Filatelistisk Tidsskrift* is largely devoted to the events at Næstved 90, site of the convention of the Danish Philatelic Federation, including a list of award winners.



1991 Facit \$32.95



- Complete English/Swedish Text
- Call toll-free with VISA or M/C
- U.S. orders Postpaid (book rate)
- Foreign orders add \$2.00 for surface mail. Extra for airmail.

North American Distributor:

JAY SMITH

P.O. Box 650-SCC
Snow Camp, NC 27349
1-800-447-8267 or 1-919-376-9991
(Formerly of Madison, WI)

Katalogintressenter AB Sweden

MITRE PHILATELIC

Scandinavian Stamps and Postal History

794 Fort Street #38001 — Victoria B.C., Canada V8W 3N2
Tel: (604) 380-7693

DENMARK 5ø print. IV pos. 61
and 62 (inv / up frame pair)

An item from a comprehensive
Scandinavian stock of stamps and
covers.



Whether you are buying or selling Scandinavian philatelic material for \$1 or \$10,000 it will be advantageous to you to contact us for a fair market quotation.

SCC CHAPTER 13 DELAWARE TWENTY-FOURTH ANNUAL AUCTION
 General and Specialized Scandinavia
 April 23, 1991

Usual auction rules apply. All bids are confidential. Lots are sold at one advance over the second high bid, or at the starting bid if only one bid is received. Starting bids are set by the sellers, generally well below current market values. Lots are mailed at buyers expense.

Unless stated otherwise listings are 1991 Facit, then Scott in (). Catalog values are in (Sw)Kr, \$ or DKr as appropriate. (At this writing the SwKr is ca \$0.18.) NO BIDDERS COMMISSION. Lots returnable up to 5 days if erroneously described.

Unused have original gum unless otherwise stated. CENTERING is defined: VF means centered, F--perfs do not touch design, VG--perfs may cut. NOTE: defective items may be F or VF, but the defects are ALWAYS mentioned. Also: *--unused, o--used, C--cover or card, C/P--crown/posthorn, P--piece, NH--never hinged, LH--lightly hinged, VLH--almost no hinge mark, ng--no gum, sp--short perf, cr--crease, ms--manuscript, ow--otherwise, cxl--cancel, cds--circular date cxl, SON--socked on nose, w--with, UL--upper left, LR--lower right, etc. Lots guaranteed genuine unless described otherwise.

SEND BIDS TO SCANDINAVIAN COLLECTORS CLUB, CHAPTER 13, P.O. Box 59, ROCKLAND, DE 19732. For photocopies, or detailed lot descriptions, PLEASE SEND A SASE. Prices realized sent to all bidders. Good luck!

LOT#		CAT VAL	START #
DANISH WEST INDIES			
1	o 5e (5) 1885, 1c, cxl "FREDE(RIKSTAD)", Fine	(Kr 300)	17.00
2	* 6h (6) 1878, 3c, Printing VIII, VF NH	(Kr 250)	30.00
3	* 7b (7) 1878, 4c, almost VF and VLH	(Kr 90)	8.50
4	* 16b (18) 1902, 4c, Very Fine, NH	(Kr 125)	10.00
5	P 16a,16b 1901-2, bisects, both prntgs, each on piece	(Kr 550)	25.00
6	o 19-22 (21-2,29-30) 1900, all w. cds, F-VF set	(Kr 620)	40.00
7	* 21,22 (22,30) 1900, 5c,8c arms, F-VF LH	(Kr 250)	19.00
8	* 21 (22) 1900, 5c blue, FVF NH	(Kr 150)	10.00
9	* 25 (27) 1902, 2c surcharge, FVF NH	(Kr 150)	12.00
10	* 29-31 (40-42) 1903, the BIT surcharges, Fine+ NH	(Kr 400)	25.00
11	* 44 (46) 1908, 20 Bit bicolor, superb NH	(Kr 400)	30.00
12	* L1-L4+L3shade, the first set + shade of 6c, FVF	(Kr 650)	35.00
13	o L1-L4 (J1-J4), 1902 dues complete, FVF	(Kr 850)	60.00
14	o L1 (J1) FVF	(Kr 100)	5.00
15	o L5-L8 (J5-J8) 1905 dues complete, FVF	(Kr 400)	35.00
16	* FK7 2c stamped envelope, very slightly soiled	(Kr 400)	10.00
DENMARK			
17	C 1849 Stampless, Copenhagen to Bordeaux, cds KJOBENHAVN, str.line DENEMARCK PAR HAMBourg, rate in script "8", nice		18.00
18	C 1866 Stampless, Copenhagen to Bordeaux, excellent boxed P.39., plus others (cds) + ms rate "8", nice		25.00
19	C 1855 Stampless, Copenhagen to Bordeaux, excellent boxed DANEMARK R.2., plus others and ms "18", nice		20.00
20	o 6 (6) 1857 16s violet, 3 mgns, close UR, FVF	(Kr1200)	35.00
21	o 7 (7) 4s brown, 3 1/2 good mgns, 3-ring #94 cxl (Tester \$35)		5.00
22	o 8 (8) 1858 8s green, 3 nice mgns, touches LL, F+	(Kr 600)	20.00
23	o 12c (12) 1865 3s lilac, very fine	(Kr 500)	35.00
24	o 12c (12) same, 1t crease, very fine	(Kr 500)	12.00
25	o 40b (44d) 1902 watermark var, expert repair, VF	(Kr2000)	75.00
26	o 48 (80) 1912 35c surcharge, cds BRANDER() VF	(Kr 325)	21.00
27	o 53v1 (38) 1884 5c, deformed "5" variety, Fine	(Kr 500)	25.00
28	o 55cv2(40) 1884 20c, break in R frameline, just Fine	(Kr 750)	38.00
29	* 62v2 (56) 1904 15c surcharge, R "5" bent down, Fine	(Kr 100)	6.00
30	o 95Sx1,96Sx1 vert slot machine pairs, VF	(Kr 115)	5.00
31	* 101a TB1/TB2, 4-blocks, 2 diff tetebeche, VF LH	(Kr 270)	22.00
32	* 110 TB1/TB2, 4-blocks, tetebeche, near VF, LH	(Kr 900)	72.00
33	o 119(263) 1938 DFU block of 10, sl reinf, VF	(Kr 290)	17.00
34	* 124-130(185-191) ovpts cpl, 127 is VF!, rest FVF	(Kr 500)	30.00
35	* 127 (188) 1926 7c surcharge on 5c, Fine+, LH	(Kr 350)	25.00
36	C 161(128) 1931 Kr w "Iron Cross" perfin on PC, VF	(Kr(250))	15.00

37 *	201-12(164-75)	1924 PO Anniv cpl in 4-Blx, FVF NH	(Kr 600)	36.00
38 o	168-9(M1-2)	1917 4-blocks, SON cxl, FVF	(Kr1100)	75.00
39 o	175 (176)	20o arch, (NAE)SBYHOVED(BROBY) Star Cxl,FVF		4.50
40 o	185 (146)	27o on 5o, clean copy, nearly VF	(Kr 125)	9.50
41 o	191 (152)	27o on 38o, FVF	(Kr 350)	28.00
42 o	195v (159)	10o wh spot in N, large thin	(Kr 750)	2.00
43 o	196v1 (157)	20o no pearl variety, Fine	(Kr 60)	3.50
44 *	213v1(C1var)	10o airmail,"broken wing",negl faults	(Kr 400)	16.00
45 o	215(C3)	25o airmail, nice clean cds, VF	(Kr 250)	18.00
46 o	215(C3)	same in PAIR, clean SON cds, FVF	(Kr 500)	35.00
47 *	229a, 231, 232a-6a (232-8),	Type I set cpl, VF LH	(Kr 582)	42.00
48 *	245(B5)	1929 25o blue, semipostal hival, F OG	(Kr 135)	7.00
49 *	246-55(210-19)	1930 set complete, VF OG	(Kr 650)	30.00
50 o	259v (241)	1934 1Kr, reentry var, FVF	(Kr 90)	7.00
51 o	267TB2,269TB2,270TB2	Andersen gutter pairs, VF	(Kr 320)	17.00
52 o	278-80(B6-8)	1937 semis in 4-blocks, SON cds, VF	(Kr 475)	39.00
53 *	280H1(223d)	1937 bklt 4-pane w selvedge,near VF, NH	(Kr 275)	16.00
54 *	281-4(258-61)	1937 set complete, VF LH	(Kr 135)	7.00
55 *	284v (261)	30o blue, reentry var, crnr copy,near VF	(Kr1000)	70.00
56 o	315v2 (294)	10o line in "7" variety, nearly VF	(Kr 55)	3.50
57 *	317v (296)	4o doubled print variety, nearly VF	(Kr 150)	9.00
58 o	317v (296)	same variety, used copy FVF	(Kr 75)	4.50
59 o	330bvl(319)	15o violet, "VIGGO BANG" reentry, FVF	(Kr 150)	7.00
60 *	425a (400)	25Kr, ordinary paper, VF NH	(Kr 250)	14.00
61 o	Tj9v (P9)	5Kr bicolor, "cut corner" variety, FVF	(Kr 600)	32.00
62 *	RE2,25,30,32,36,41	Ad pairs, OG, RE2 is NH, FVF	(Kr 510)	45.00
63 *	RE18+RE19,RE31+RE34(x2),	RE33, Cpl panes, FVF LH	(Kr1155)	100.00
64 *	RE31+RE34	6-block incl 86SX pair, nearly VF, NH	(Kr 255)	19.00
65 *	RE47	cpl pane + selvedge, fresh, FVF NH	(Kr 600)	55.00
66 *	RE47	3-strip + selvedge, fresh, VF NH	(Kr 300)	35.00
67 *	RE47	same, but lightly hinged	(Kr 150)	19.00
68 *	H43	1972 Booklet, Frederick IX complete, VF	(Kr 300)	27.00
69 *	H44	1974 Booklet, Margrethe complete, VF	(Kr 200)	18.00
70 *	#10a	Aerogram, "no control #" var,VF (1966 Higgins/Gage \$7.50)		6.00
71 *	#39	1910 Semioffic Svendsen flight, 4500 iss, VF (Luning #8)		5.00
72 C	78	on Kallundborg PPC, SEJERO Star cxl, card tiny tear		9.00
73 C	77-8 + 1916	Seal on PPC, NAESBJERG Star cxl,crnr off card		8.00
74 C	131 pr (97)	cvr, VEJGAARD Star cxl,AALBORG side cxl		10.00
75 C	131	on Gudum PPC, NORRE NISSUM SEMINARIUM Star,LEMVIG side cxl		10.00
76 C	131 + 1915	Seal (tied w. side cxl), GREVE Star cxl,		9.00
77 C	95 + 1927	Seal on PPC, SEVEL Star cxl, seal not tied		7.00
78 C	3 PPC's w. 3	diff Mute Star cxls, all have Xmas seals		16.00
79 C	5 Covers w. 5	diff Mute Star cxls, all have side cxls		27.00
80 C	Cover w. Mute	Cxl "HJERTEBJAERG", Side cxl STEGE		6.00
81 C	Stamped entire,	double Footpost cxl Typ VI + 3-ring #1 some repair, still a nice item		20.00
82 C	90,95pr	on folded cover, bridge cxl PILEMARK, rare		10.00
83 C	119blk,263	First Flight: Slagelse-Kjbenhavn (1938), nice		15.00
84 C	241	on censored cover, dated 21 10 40, VF		5.00
85 C	14 Stamps	incl PF13 pair on Registered Cv Guldager to Vienna, plus Austrian control #434 on front		10.00
86 o	COLLECTION:	155 Diff Star cxls, incl some better ones		200.00
87 o	COLLECTION:	64 Diff Mute star cxls, several nice strikes		55.00
88 o	Mart book	remainder Star/Mute cxls, mart net value \$20.90		5.00
89 *	COLLECTION:	192 LOCALS(Copenhagen//Viborg) incl some better ones, transfer types,few blox,few minor flaws(as usual),nice lot		200.00
90 *	COLLECTION:	105 Diff locals, 11 diff Byposts		60.00
91 *	1982	Booklet of 24 Xmas seals, VF NH		4.00
92 C	4 Xmas	seals (1957-8,1964,1970) tied on 4 covers		20.00
93 *	GROUP:	22 diff KIRKENS KORSHAER local seals, FVF		5.00

FAEROES

94 o	THORSHAVN	cds on 3 diff Danish stamps, FVF		4.00
95 P	THORSHAVN	cds dtd 5.5.49 on Danish #103a, 305 on piece, VF		3.50
96 *	1980,1981,1982,1986	Year Packs, VF NH	(Kr 315)	25.00
97 *	1980,1981,1982	Christmas seals, sheet of each, VF		7.50

FINLAND

98 o	4c1 (5)	1860, 2 sp, deep color, cds, near VF	(Kr 250)	10.00
99 o	6v1c3 (7)	same, perfect perfs, couple natural pinholes, (NYST)AD highbox cxl, nearly VF	(Kr1700)	50.00

100	o	6v1c3 (7)	same, very shallow thin, NYST(AD) hibox	(Kr 500)	15.00
101	o	7 (8a)	1866 10p, 2 short teeth, v lt cxl, F	(Kr 700)	20.00
102	o	8v2c2 (9a)	20p, 3 sp, bright, lt cxl, VG-F	(Kr 275)	8.00
103	o	8v2c3 (9)	same, 1 sp, centered R, cds, VG	(Kr 200)	8.00
104	o	9v1c2 (10b)	1866 40p, all teeth but sevral clipped	(Kr 200)	10.00
105	o	9v1c3 (10)	same, 2 sp, cds, VG	(Kr 200)	10.00
106	o	14Sa(19)	1875 8p, FVF	(Kr 650)	25.00
107	o	19SC1b(24)	1875 1Mk, pf 11, faint stain at B, F	(Kr1100)	28.00
108	o	33 (44)	1890 5Mk bicolor, almost VF	(Kr 600)	30.00
109	o	34 (45)	1890 10Mk bicolor, VF	(Kr 800)	50.00
110	o	R17 10R	bicolor, few rubbed perfs at top, near VF	(Kr1500)	100.00
111	o	54 (69)	10Mk black/gray, VF	(Kr1920)	120.00
112	o	60 (75)	10Mk bicolor, trifle heavy cxl, FVF	(Kr 450)	15.00
113	*	83 (118)	5Mk Vasa hival, scarce, VF LH	(Kr 600)	65.00
114	*	173 (88)	1+4Mk semipostal, VF NH	(Kr 350)	26.00
115	*	363 (279)	12Mk "Postrider", VF NH	(Kr 90)	11.00
116	o	363 (279)	same, underpriced, VF	(Kr 150)	18.00
117	*	388 (C3)	Plate# corner of 2 stamps, stamps NH,VF	(Kr 440)	25.00
118	C	1049 (768)	1988 FDC w SCC Chap 13 cachet, VF	(Kr 15+)	3.50
119	C	F8II(M9)	1983 stamp on cover,cxl Padasvoki 25 4 83	(Kr 950)	140.00
120	o	5	Ship cancels on 4 different stamps		25.00

GREENLAND

121	o	P2 (Q3a)	5o, brown, type II cxl,FVF	(Kr4500)	300.00
122	o	P4 (Q1)	1o olive green, FVF	(Kr 200)	22.00
123	o	P4 (Q1)	same, Fine +	(Kr 200)	12.00
124	o	P4III(Q1)	similar, Wowern cxl 14.02,lt vert cr,VF	(Kr 450)	35.00
125	o	P5 (Q2)	2o yellow, VF	(Kr 615)	55.00
126	*	P5-1B(Q2)	2o yellow, perf 3 sides, sml hr, VF	(Kr1800)	100.00
127	o	P6 (Q3)	1918 5o brown, VF	(Kr 550)	70.00
128	o	P6 (Q3)	same, VF	(Kr 565)	50.00
129	o	P6 (Q3)	same, Wowern cxl 15.01, Fine +	(Kr 600)	50.00
130	*	P6I (Q3)	same, yellow gummed, near VF, LH	(Kr1000)	65.00
131	o	P7II (Q4)	10o bl green, nearly VF	(Kr 325)	22.00
132	o	P7 (Q4b)	same, FVF	(Kr 265)	25.00
133	o	P7pr (Q4b pr)	same, vert. pair, VF	(Kr 515)	50.00
134	o	P7IV (Q4b)	1916 10 ore sheet of 25, blue oval "Gronlands Styrelse" cxl, few perf separations in mgn,FVF	(Kr6250)	500.00
135	o	P8 (Q5)	15o violet, Wowern cxl 14.01, VF	(Kr 800)	81.00
136	o	P8 (Q5)	same, Wowern cxl 21.02, VF	(Kr 815)	70.00
137	o	P8II(Q5)	same, str line "Gronland Styrelse", VF	(Kr1000)	85.00
138	o	P9 (Q6)	20o red, cxl "Udstedet Proven", FVF	(Kr 290)	27.00
139	o	P9VI (Q6)	same, common cxl, VF	(Kr 40)	5.00
140	o	P9x3 (Q6x3)	same w. Avane 13,24,28 cxls, VF		29.00
141	o	P11 (8a)	Similar lot w. cxls Avane 3,24,28, VF		25.00
142	o	P10a(Q7a)	70o lt violet, Wowern cxl 21.01, VF	(Kr 950)	85.00
143	o	P11 (Q8a)	1Kr yellow, SON "Udstedet Rodebay",FVF	(Kr 750)	68.00
144	o	P11 (8a)	1Kr yellow, Avane 28 cxl		25.00
145	*	P12 (Q9)	3Kr brown, nearly VF, LH	(Kr 600)	43.00
146	*	P14-6 (Q6-8)	20,70o,1Kr perf 10 3/4, nearly VF,LH	(Kr 400)	35.00
147	*	P17-8 (Q10-1)	70o,1Kr, VF LH	(Kr 300)	25.00
148	*	26 (26)	2Kr from Liberation set, lt cxl, FVF	(Kr 325)	25.00

ICELAND

149	o	2 (2)	2sk red, type B cds, sm faults but nice,FVF	(Kr5500)	100.00
150	o	3 (3)	3sk brown, type B cds, oc, negl flts, G-VG	(Kr6000)	95.00
151	*	7 (7)	16sk yellow, tear UR, ng, bright copy, FVF	(Kr 700)	10.00
152	o	9 (9)	5a blue, BAER cds,sl rnd crnr LR, nice, FVF	(Kr3600)	100.00
153	o	9 (9)	same, without faults, lt cxl, FVF	(Kr3600)	180.00
154	o	8 (15)	3a, 3-ring cxl #236, pinhole,rubbed pfs,VF	(Kr 850)	25.00
155	o	8cv1(15)	3a, double 3 variety, nearly VF	(Kr 550)	29.00
156	o	10 (16)	5a, antique cxl MKLAHOLT, Facit RR, F		30.00
157	o	11a (10)	6a, scarcest prntng, 3-ring #1 cxl, VF	(Kr2800)	125.00
158	o	11b,11c(10x2)	, same, 2 scarce printings, FVF	(Kr 875)	48.00
159	*	12a (11)	10a, 1 slghtly short pf, ng, bright, VF	(Kr1400)	40.00
160	*	12c (11)	same, ng, VF	(Kr1200)	35.00
161	o	13 (12)	16a, antique cds, VF	(Kr 300)	20.00
162	o	15a (17)	20a ultramarine, light cds, VF	(Kr 850)	48.00
163	*	15c (17)	20a blue, very small thin, Superb centr	(Kr1400)	36.00
164	o	16 (14)	40a green, light cds, nearly VF	(Kr1000)	55.00
165	o	16 (14)	1876 40a green, centered T, just F	(Kr1000)	26.00

166	o	27	(27)	16a, SON antique cxl "ISAFJORDUR", FVF	(Kr 525)	32.00
167	o	34	(32)	small 3 Prir, sl rnd LL crnr, cds, Ft	(Kr2500)	95.00
168	*	35	(31)	large 3 Prir, ng, Fine	(Kr3500)	195.00
169	o	50	(51)	4a I Gildi, FVF	(Kr 300)	4.00
170	*	69v3(40+40a)		Pjonusta var in strip of 3, F LH	(Kr 625)	35.00
171	o	76v3(71)	1e,	break in left frame variety, Fine	(Kr 225)	14.00
172	o	89	(84)	2Kr, centered bottom, just F	(Kr 400)	15.00
173	*	94	(102)	5a, nearly VF, LH	(Kr 500)	30.00
174	o	108-13	(86-91)	1911 set cpl, FVF	(Kr 475)	24.00
175	o			similar lot, FVF	(Kr 475)	20.00
176	*	122	(140)	10Kr surch, sl gum wrinkle, near VF	(Kr1750)	60.00
177	o	123v1	(141a)	10Kr on 1Kr w TOLLUR cxl, near VF	(Kr 350)	26.00
178	o	145v	(176)	6-blk, TOLLUR cxl, nice item, FVF	(Kr 48+)	6.00
179	*	158v1	(139var)	10a on 5a, hr, touches at L, VG-F	(Kr1000)	39.00
180	*	163v,162x2	(C10x3)	Bulge variety in 3-strip, Fine	(Kr 330)	24.00
181	o	169v1	(145)	10a, hook on M variety, FVF	(Kr 50)	3.50
182	*	179v1	(158)	25a, wh spot var, distrbd gum, Fine	(Kr 110)	5.50
183	o	204-9	(C15-20,C16a,7a),	cpl incl perf vars, VF	(Kr 650)	46.00
184	*	212-15	(195-8)	1935 set cpl, nearly VF	(Kr 210)	12.00
185	*	216v3	(212)	shifted surchrge, Gronlund certifi,FVF	(Kr 300)	15.00
186	o	219-20	(200-1)	1937 higher values, VF	(Kr 120)	9.00
187	*	228,232	(204,208)	1938 Geyser key values, VF LH	(Kr 315)	22.00
188	*	255	(216)	1939 2Kr World's Fair hival,near VF	(Kr 400)	24.00
189	*	263-4,280	(229a-31a)	Perf 11 1/2 set, VF NH	(Kr 950)	45.00
190	o	414v1	(359a)	10Kr, accent missing variety, FVF	(Kr 135)	20.00
191	o	Tj2v2	(02)	2s lilac, small th, looks nice, VG	(Kr 900)	10.00
192	*	Tj3	(03)	1873 4s green, rough perms (usual) FVF	(Kr 425)	22.00
193	*	Tj4-9	(04-9)	1876 set cpl, Tj9 just F, rest FVF	(Kr1005)	45.00
194	*	Tj6a	(06a)	10a ultra, ng, bright copy, nearly VF	(Kr2200)	55.00
195	o	Tj18	(028)	16a I Gildi, Bridge cxl, nearly VF	(Kr 375)	20.00
196	o	Tj53I,53II,54	(050-1,50a)	Cameo officials cpl,FVF	(Kr2200)	165.00
197	C	6,29	2	diff double postcards, unused, VF	(Kr 83)	3.00
198	C	121I		Double postcard, I Gildi cvpt, VF	(Kr 175)	6.00
199	C	18		Diff cards (sgl,dbl,letter), mint condition	(Kr1242)	65.00
200	o	88		Different recent, light cxls, VF		10.00

CANCELLATIONS ON ICELAND STAMPS

201	o	26	(26)	w purple SON C/P cxl OLAFSVIK, Fine	(Kr 52)	2.00
202	o	8	(15)	w purple C/P cxl PATREKSFJORDUR, just F	(Kr 165)	7.00
203	o	24	(24)	w black C/P cxl (RAUDAB)ERG, FINE	(Kr2200)	55.00
204	o	25,26x2		each w C/P cxl, Facit #2,33,99, FVF	(Kr 239)	10.00
205	o	170	(146)	w numeral cxl #22, SON, VF	(Kr 233)	13.00
206	o	81	(76)	w numeral cxl #200, Fine	(Kr 158)	15.00
207	o	170	(146)	w numeral cxl #207, FVF	(Kr 403)	22.00
208	o	173	(152)	w numeral cxl #211, SON, FVF	(Kr 460)	20.00
209	o	170	(146)	w numeral cxl #240, FVF	(Kr 978)	55.00
210	o	267	(239)	w numeral cxl #287, FVF	(Kr1428)	85.00
211	o	COLLECTION:	97	Diff #cxls betw 2//270, majority complete strikes, most clear/bold, FVF	(Kr8290)	425.00
212	o	GROUP:	12	different # cancels, some SON, FVF	(Kr 425)	22.00
213	o	GROUP:	#cxls,	some partial, betw 20//236, FVF (1989Kr 882+)		33.00
214	o	64,	116	w EDINBURGH cxls, FVF	(Kr 122+)	11.00
215	o	69,	115	w EDINBURGH cxls, FVF	(Kr 105+)	14.00
216	o	167,	170x2,	3 stps w KJOBENHAVN cxls		9.00
217	o	Icelandic	"Fra Svipjod"	on 2 Swedish #72 on piece, VF		35.00
218	o	26,64,76		each with FRA ISLAND cxl, FVF		8.00
219	C	Cover	marked "Fra Island"	+5 stamps w 5 different Fra Island cxls, FVF		30.00
220	o	GROUP:	35	different stamps w TOLLUR cxl, FVF (1989Kr1641)		90.00

NORWAY

221	o	1c	(1)	1855 2s, cxl #282, even mgns, SPA certifi	(Kr1250)	80.00
222	*	2	(2)	1856 2s yellow, few sp @ B, nice color,FVF	(Kr4000)	100.00
223	o	2a	(2)	same, antique cds, nearly VF	(Kr1300)	78.00
224	o	4v5	(4)	4s, FIBE variety, cxl SKIE 1864, nice, VG (Kr 200+)		20.00
225	o	4	(4)	1856 4s blue, partial plating - 51 identified positions + descriptive literature	(Kr5100)	170.00
226	o	5	(5)	8s pale brown carmine, Fine	(Kr 300)	18.00
227	o	5	(5)	8s, SON HAMMERFEST 8.2.1860,cntrd L,just F	(Kr 300)	20.00
228	o	6v	(6)	2s, yell-orange Ty1, ring cxl 364,near VF	(Kr2000)	100.00
229	o	7	(7)	3s gray, Ty2, lt cxl, FVF	(Kr3000)	200.00
230	*	10a,10b	24s,	2 shades, 10b has pinhead thin, FVF	(Kr 675)	35.00

231	o	11,12,13a,14,15a(11-15) cds, FVF	(Kr1910)	90.00
232	*	12 (12) nice color, lt pencil on back, F LH	(Kr 150)	7.00
233	o	13a,13b (13x2) 3s, 2 shades, cds, just Fine	(Kr2950)	130.00
234	o	21 (21) 7s brown, light clear cds, VF	(Kr 500)	50.00
235	*	28 (26) 12o cntrd to top, VG	(Kr 800)	35.00
236	o	30 (28) 25o dull violet, pulled perf, nearly VF	(Kr1000)	39.00
237	o	34-6(32-4) 1878 hivals, FVF	(Kr 560)	30.00
238	o	42a (42) 12o graybrown, clear cds, almost VF	(Kr 350)	22.00
239	o	43x16 (43x16) 16 copies for plating/etc, G-VF	(Kr1440)	60.00
240	o	92 (66) 2Kr, very shallow thin, centered VF	(Kr1000)	36.00
241	o	103v2 (77) 5o green, ORF variety, FVF	(Kr 125)	6.00
242	o	120v2 (94) 50o maroon, ORF variety, Fine	(Kr 100)	6.00
243	*	151-7 (104-110) bear set cpl, FVF	(Kr 360)	28.00
244	*	198-201 (B5-8) Nansen set cpl, VF LH	(Kr 170)	16.00
245	*	242-3 (182-3) Key values of the set, VF LH	(Kr 70)	9.00
246	*	271 (212) 10o watermarked V ovpt, VF LH	(Kr 65)	8.00
247	o	271 (212) same w light cds, VF	(Kr 300)	28.00
248	*	277 (218) 50o w wmk, sl fluid damage, near VF	(Kr1250)	65.00
249	o	426-8 (340-42) LR corner 4-Blx, Superb	(Kr 940+)	135.00
250	*	456-60 (370-4) 1Kr-10Kr cpl, near VF	(Kr 181)	19.00
251	C	1 Each Norway/Dnmrk FF covers dtd 15.11.54 to L.A., VF		4.00
252	C	5 Covers, 1924//1937 era, 2 regstrd, 2 advrtising, VF		15.00

SWEDEN

253	o	10 (10) 24o cxl SKOFDE 1872, cntrd B, just Fine	(Kr 200)	8.50
254	o	11a (11) 30o maroon, cds, Fine +	(Kr 400)	24.00
255	o	13 (LM2) bistre, cds, FVF	(Kr2800)	100.00
256	o	14A (13) 3o Type I, rough perfs, cntrd T, VG-F	(Kr2800)	80.00
257	o	15 (14) 17o red violet, cds, FVF	(Kr1000)	60.00
258	o	16 (16) 20o red, upright SON KARLSBORG 18 6 17 VF(Kr 150)		15.00
259	o	7-8,10-16, 24 stamps, few small faults but many sound stamps, useful for shades/printings, VG to FVF	(Kr9580)	160.00
260	o	24v2 (24) 24o, shaded #, cxl PKXP No.2 NED, VF	(Kr 300+)	30.00
261	o	27b (37) 1872 1Rd, cds, VF	(Kr 600)	42.00
262	o	32 (32) 12o, with Danish "Fra Sverige" cxl FVF		4.00
263	o	32v5(32) variety, cxl "Fra Sverige", FVF	(Kr 20+)	6.00
264	o	51b (51) 10o surcharge, bold cds, bright copy,FVF	(Kr 200)	14.00
265	*	55a(59) 1896 15 ore, nice color, FVF LH	(Kr 200)	11.00
266	o	115-23 (B12-20) Second semis, FVF	(Kr1605)	68.00
267	o	126-135(B22-31) Third semis, VF	(Kr 175)	14.00
268	*	142Ea(133) 5o perf 13, owner's mark on back, VFLH	(Kr2800)	150.00
269	*	137-B (C2-3) 1920 airs, FVF	(Kr 185)	15.00
270	*	143C,144C (126-7) 5o,10o green, VF LH	(Kr 95)	7.50
271	*	170a (155) 115o redbrown, paste-up copy, VF LH	(Kr 50)	4.00
272	*	177Ab (168) 15o pale red, few sp LL, near VF, LH	(Kr 250)	10.00
273	*	180a (171) 20o pale red, Fine +	(Kr 140)	7.00
274	*	187b (181) 35o red violet, Fine +	(Kr 275)	13.00
275	*	189a (183) 40o olive green, VF	(Kr 250)	14.00
276	*	191a1 (184) 45o brown, Fine +	(Kr 250)	10.00
277	o	204 (205) 1924 45o brown, light cds, VF	(Kr 250)	22.00
278	*	211-25,212cx (197-212)cpl set, FVF LH	(Kr6120)	400.00
279	o	211-222 (213-224) thru 80o, select copies, VF	(Kr2818)	250.00
280	*	217 (219) 35o black, nice copy, VF	(Kr 200)	19.00
281	*	240A-2A,243-5(242-7) coils complete, VF LH	(Kr 370)	30.00
282	*	246-57(248-62) 1936 set cpl, F-most VF	(Kr 920)	49.00
283	*	328A,328B,329(316-8) cpl set, VF LH	(Kr 159)	17.00
284	*	335A,B,336 (326-8) 1941 set cpl, VF LH	(Kr 242+)	19.00
285	o	Tj27-39 (O28-40) complete, VF	(Kr 200)	17.00
286	o	Tj46 (O47) 8o, the scarce key value, nearly VF	(Kr 175+)	14.00
287	*	HAG-OV 1957 Complete Booklet, VF NH	(Kr 200)	20.00
288	C	HF2,231 on air Cv (front only), cxl 16 9 37, VF	(Kr 350+)	40.00
289	*	4-26, 23 diff SVARLOSEN MARKEN (sp mailing) VFNH		50.00
290	o	GROUP: 72 Railroad cxls, some duplication, VG-VF		20.00
291	C	FDC's: 168 clean,unaddressed betw 1966-87, VF lot		80.00
292	C	60 Covers with special event cancellations, VF		20.00
293	1988	"New Sweden" COMBINATION FDC: U.S., Finland,Sweden booklet pane, all on SCC Chap 13 cacheted cover, VF		20.00
294	C	1988 COMBINATION FDC: 1938,1988 U.S. stamps, U.S. cxls, VF		6.00
295	C	Scandinavia: 29 better grade covers, postcards, (commercial)		30.00
296	C	Scandinavia: 152 Items, mostly covers/PPC (commercial)		15.00

Use any piece of paper for bids. List lot numbers with your bids and please print clearly. Don't forget your name and address. Thanks.

The Scandinavian Collectors Club

—*Founded, Nov. 25, 1935*—

Elected Officers

PRESIDENT:	Jared H. Richter, 1353 Plum St., San Diego, CA 92106-2549
VICE PRESIDENT:	Dr. Roger G. Schnell, 4800 NE Terrace, Ft. Lauderdale, FL 33308
SECRETARY:	Raymond Erickson, 5427 Delia Way, Livermore, CA 94550
TREASURER:	Donald Himer, 12360 Chandler Blvd., North Hollywood, CA 91607
DIRECTORS-AT-LARGE:	Chris McGregor, Carnarvon St., Vancouver, BC Canada V6N 1K3 Ronald B. Collin, P.O. Box 63, River Grove, IL 60171 Eric Roberts, P.O. Box 460201 Galleria Sta., Houston, TX 77056
IMMEDIATE PAST PRES.:	Alfred A. Gruber, P.O. Box 1073, Newark, NE 19715

Appointed Officers

EXECUTIVE SECRETARY:	William H. Lamkin, P.O. Box 302, Lawrenceville, GA 30246
HISTORIAN:	Dr. Frank N. Schubert, 8505 Cherry Valley Lane, Alexandria, VA 22309 Dr. W. E. Melberg, Box 134, Allenton, WI 53002
LIBRARIAN:	Wade H. Beery, P.O. Box 3781, Orlando, FL 32802
STAMP MART MANAGER:	Jared H. Richter, 1353 Plum St. San Diego, CA 92106-2549
APS REPRESENTATIVE:	(Post Open)
PUBLICITY CHAIRMAN:	Wayne P. Rindone, P.O. Box 276, Newtonville, MA 02160
BY-LAWS CHAIRMAN:	Ronald B. Collin, P.O. Box 63, River Grove, IL 60171
AWARDS CHAIRMAN:	Alan Warren, P.O. Box 17124, Philadelphia, PA 19105
LITERATURE PROMOTION:	Jeffrey N. Crown, 850 Flagler, Dr., Gaithersburg, MD 20878-1946
EXHIBITION CHAIRMAN:	

Staff, *The Posthorn*

Sr. EDITOR:	Gene Lesney, 1139 Los Palos Drive #5, Salinas, CA 93901
BUSINESS MANAGER:	J.R. "Jack" Day, 2109 Skycrest Drive #4, Walnut Creek, CA 94595

Editors & Associate Editors

CHAPTER NEWS:	(Post Open)
D.W.I.:	Dr. Roger G. Schnell, MD, 4800 N.E. 20th Terrace, Ft. Lauderdale, FL 33306
DENMARK & FAROES & GREENLAND:	Dr. Dan Laursen, 4901 East Eastland, Tucson, AZ 85711
FINLAND:	Mike E. Hvidonov, 4 Dwight Lane, Great Neck, L.I., NY 11024
ICELAND:	Michael E. Falls, 575 Virginian Drive, Norfolk, VA 23505-4242
NORWAY:	Roe C. Blume, 10 Chestnut St., Wilmington, DE 19810
SWEDEN:	Ben De Lambert 304 Landsdale Ave. SE, Millbrae, CA 94030

EXECUTIVE SECRETARY — Send all dues, applications for membership and change of address.

BUSINESS MANAGER — Send all ads, payments, or requests for rate sheets.

EDITOR, *The Posthorn* — Send general articles for publication.

ASSOCIATE EDITORS, *The Posthorn* — Send articles pertaining to individual countries to the appropriate Associate Editor.



President's Message

By Jed Richter

Dateline — San Diego, December 20, 1990. Unfortunately, printing deadlines preclude a report on the 1991 SCC National Convention at ARIPEX, but preliminary indications of planned attendance and the wonderful job done by Dan Lausen and the new Tucson Chapter reflect a successful meeting-to-be.

Volunteer Club

I've been guilty of forgetting it. Only the Executive Secretary and Mart Manager receive anything for their work. (Not nearly enough, in my opinion, but the Club doesn't have planned deficits in our Budget, nor the resources to do any better.) So we owe a debt of gratitude to Msrs. Engstrom, Frigstad, Halpern, Warren, Rindone, Gruber and the committees for leading us through the past two decades.

Let's have FUN!

That is my New Year's resolution. Beside hoping that I can do a good job for SCC and it's members, I don't want to be frustrated by setting too large a goal for 1991 in my collecting activities. I'll be content with continuing my efforts to assemble LUXUS used examples for my Denmark and Norway collection housed in Scott Specialty Albums started in the mid 1950's. And I will use the resources of the SCC Library, *The Posthorn*, Danish exhibits, the SCC Stamp Mart, *Posthorn* advertisers and fellow collectors to flesh out and learn more about the classic issues of Denmark that I have accumulated. The late Rev. Arthur Widiger helped me a lot in sorting out the various bi-color printings and varieties, and the late Theodore Stevenson of Boston helped by letting me acquire his already extensive collection, including a pair of 2RBS on cover. Who knows? — maybe by 1992 or 1993 I can assemble an exhibit, but I'll need help because of my partial blindness. The wonderful thing about SCC membership and fellowship is the knowledge that many will volunteer to help SCC and its members, as they have in the past. Don't be a couch potato member — dust off the old accumulation, become active and have fun!

* S * C * C *



The Executive Secretary Speaks

By William H. Lamkin

Dues and Don'ts

Yes, here I go again! Only it is not so bad. Dues are coming in rapidly and about 70 per cent have paid up. There has been a number of donations over and above the dues this year. This is good as it helps out in places not

covered by the budget and also helps maintain our dues at a low level. A number of members sent in their dues and showed a question mark as to their Membership Numbers. Now all that one has to do to find his number is to look in the *SCC Members Handbook*! However, it actually makes little difference in recording dues which goes by name and/or Membership Number into the records.

Life Members

There have been seven of our members who have taken out Life Memberships in the SCC this past month! Think about that! These fine members now do not have to listen and/or read about getting their dues into this office! They can also snicker to themselves when they read all the sarcastic remarks that I make on paying dues. Their names are listed elsewhere in this issue and all are to be congratulated!

Gossip

By the time this *Speaks* reaches the members, AIRPEX and the convention will be history. As this is being written just before I leave for Tucson, I can not tell you how it came out. I know that it will be a banner session with our new President, Jed Richter, and his staff of new officers.

I have checked the returned dues envelopes for correct addresses very closely. Especially where there was a difference in my records and the return address or bank address. This issue of *The Posthorn* reflects those changes. If your address is not correct, please let me know at once. If it is wrong, chew me out! If not, forget it!

I want to thank those of you who sent me Christmas cards this year. They were very nice and came from all sections of the world. I like that!

* S * C * C *

The

Editor's Notebook

By Gene Lesney



My Reasons for Staff Changes

A quick look at the index of subjects covered by *The Posthorn* the past two years should be evidence enough to suggest an overburden of Finland and Denmark articles [not that these are a bad thing], and a distinct lack of minimal material from other areas. For example, the single listing for The Faroes is the address of its philatelic service for purchasing new issues!

My plain English explanation to all associate editors was a simple restatement of my earlier goal to publish (not in every issue) articles about all Scandinavia. This philosophy put me at odds with a few oldtimers when I declared that the most new research on any nation's stamp is more likely to be accomplished by collectors in that nation and by foreign study groups. It was rational to me that our associate editors should be qualified to speak, read and write (and possibly translate) the language of their nation of coverage. Additionally, we should revise our staffing to include a

representative residing in that nation who could communicate with the editor. Together, they could use their expertise to determine what is new and important in research of 19th century and modern material — and contact the authors to write (or have translated) for our members.

What's in a Title?

As an unpaid volunteer, the money isn't all that great. But in order to keep a perspective I shall upgrade my label to Sr. Editor: and, as selected our staffers in the U.S. will be named Editors for specific areas; and the Scandinavians who volunteer will be listed as Associate Editors. Also, for the first time (to my knowledge) Press Cards will be issued to identify our representatives.

To date, only Finland Editor Mike Hvidonov and Denmark-Greenland-Faroe Editor Dan Laursen have been named by me! But this doesn't mean that previous contributors, whose writings have made this journal an important philatelic entity, should stop writing for us. No indeed!

This publication can use all the articles it can obtain from any source. At times we can pick and choose, but other times the bottom of the barrel is scraped — as attested by some of those "boring stories" our members complain about to me. Unfortunately, a few odd items submitted get the hook and are returned to the author, usually with constructive suggestions.

As a footnote to this *late* issue, it should be explained that everything submitted to our printer via mail is photocopied. This issue's last batch of copy did go astray in the limbo of USPS Lost Mail. Hope this in part explains the lengthy delay. It sure tells Don Himer why my photocopying expenses are so high.

DO YOU COLLECT SCANDINAVIAN STAMPS & POSTAL HISTORY? ARE YOU A SPECIALIST?



WHAT IS A SCHIFF "ESPECIALLY FOR SPECIALISTS"® AUCTION?

It's an auction designed with YOU in mind. Whether you are a buyer or a seller — each specialized area of collectin is listed in a separate section, making it easier for BUYERS to locate lots of particular interest and for SELLERS to realize maximum exposure for their material.



CATALOGS	N. America Overseas	
	Address	Address
1 Year with Prices Realised	8.50	15.00
1 year Catalogs only	6.00	13.00
1 Catalog with realizations ..	1.50	2.50
1 Catalog Only	1.00	2.00

We invite you to consign individual stamps or covers, entire collections or estates — for unreserved Public Auction or Private Treaty Sale. WE ALSO PURCHASE OUT-RIGHT! Contact us first describing your material include your address and telephone numbers.

Jacques C. Schiff Jr., Inc.



195 MAIN STREET
RIDGEFIELD PARK, NJ, USA 07660
Phones (201) 641-5566 — From N.Y.C. 662-2777
Licensed & Bonded Auctioneers — Established 1947





Library News

Dr. W. E. Melberg, SCC Librarian

The Facit people of Sweden have again come through with their latest offerings: *FACIT Special 1991 & FACIT Postal 1991 Ortstämplor Och Posthistoria*.

Peer Lorentzen, upon request, forwarded photocopies of his great exhibit of early Denmark (E&C 83). This is one that received a Large Gold & Æspremie at LONDON 90 and took the Grand Prix at NORDIA 90. It is hoped that he will honor the Scandinavian Collectors Club by showing it in Chicago at World Columbian Stamp EXPO '92 in May.

Library Donations September 25, 1990 to December 31, 1990

Cash: Dr. Frank Dingwerth, L. Marenburg.

Publications:

Nancy Blouin

Forgeries of Scandinavia. 35mm slide show (50) of altered stamps. Photographic services courtesy of Nancy Blouin. This presentation is to be expanded by new additions, enlarged color photographs and commentaries by experts of the various countries.

Göta Frimärken

Lauson H. Stone Auction 52 & 53. Göta Frimärken. 1990. 90pp. Fully illustrated (in color) examples from what has been described as the finest Swedish collection ever assembled. Many of the items were presented in his co-authored book, *Swedish Letter Rates to Foreign Destinations*.

Katalogintressenter AB

FACIT Special 1991. Katalogintressenter AB. 672pp. Illus. Another great job by the Skogs Publishers of Sweden. Much detail as in the past. Of special interest is a new section dealing with Swedish postal stationery. According to the press release, over 10,000 price increases are noted, suggesting a revitalization of the stamp market. The Swedish/English text continues to be this publication's biggest drawing power.

Facit Postal 1991 Ortstämplor och Posthistoria. 1990. 464pp. The traditional Swedish place name cancellation book including railroad and steamship markings along with postal rate charts and a backwards index of place names. This new catalog is primarily based on the *Facit Place Cancellation Catalog*, although most of the previous content has been revised and thousand of price adjustments have been made. In addition, the catalog is expanded to cover a vast range of Swedish postal history, for instance, postal rates, postal labels and military post. A lot of new data has been included in postal documentation before and during the early philatelic period and the list of Swedish stamps on covers has been updated.

Eric Kindquist

The Scandinavian Contact. Sept. 1953 (Vol 1) through Dec. 1973 (Vol 7).

SFT Journals. 1954-1954 (Bound Volumes) and 1966-1974.

Frode Vesterby Knudsen

De Danske Frimærkehæfter. F. Knudsen. 1990. 80pp. A very detailed handbook about Danish advertising booklets. Many illustrations with much of the text taken from Dansk Post-og Telegrafmuseum documents. Will be very useful for booklet and also topical collectors. Can be purchased from Skilling Publishing House in Denmark.

Peer Lorentzen

"Danmark 1851-1863." Photocopies of the donor's prize-winning exhibit. 120pp.

Timothy McRee

"The Forgotten Child — A Study of the Printings of the DWI Fiscal Adhesives." Photocopies of the donor's exhibit. 48pp.

Northland Co.

Scandinavia. Wayne Sommer's *Iceland & Denmark*. Northland Co. stamp auction. 11/90. 64pp.

Rannveig Gisladdottir

Icelandic Philately and Postal History: A Bibliography. R. Gisladdottir. 113pp. A very detailed listing of books and articles concerning stamps and postal history of Iceland.

Norsk Filatelistforbund

Håndskrevne Poststednn på Norske Brev. K. Mathiesen & E. Hannevig. 1986. 70pp. Illus. A study of handwritten Post Office markings on Norwegian letters, includes some early ink cancels.

BERGEN 90. Katalog & Palmares. 70pp. Illus. Highlighted by an article about postal history involving a steamship company, Det Midthordlandske Dampskipsselskab and OSBANEN, a 6 page postal history of a NE Norwegian railroad.

TYFEX 90. Katalog & Palmares. Trondheim. 70pp. National Norwegian Exhibit for Juniors.

NORDJUNEX 90. Katalog & Palmares. Oslo. 70pp. National Norwegian Exhibit for Juniors.

Herbert Oberg

Handbok Över Sveriges Frankotecken 1855-1946. SFF. 1946. 360pp. Handbook in depth on Swedish issues. Illus.

Nordan Specialkatalog Över Nordens Frimärken. 1951. Pocket-sized catalog of Scandinavian stamps. 690pp. Illus.

George Sickles

NORDIA 91. Bulletin 2. 34pp.

Arlene Swanson

"The Roger A. Swanson Collection. Iceland." Photocopy. 120pp.

Alan Warren

Kohl - Briefmarken Handbuch Island. H. Munk. Undated. 66pp. Photocopies of a handbook of Icelandic stamps. See ICE B 25.

Price List of Norwegian Stamps. 1896. H. Buckley. 8pp.

Preisliste über Skandinavien, Isländische und Finnische Postwerthzeichen. 1890. M. Børresen. 20pp. Early Pricelist of Scandinavian stamps.

Preisliste en Gros & en Detail über Breifmarken. 1897. P. Brose. 7pp. Early pricelist of Scandidnavian stamps.

Rainbow Services Philatelic Literature Tear Sheet. Vol. 1, 2 & 3. 300pp. Listing of various philatelic articles that can be purchased from this company.

Purchases

Denmark — The Inland Mail 1871-1902. M. Juhl. 1990. 72pp. Discusses the various postal rates during this period with special emphasis on the Skilling to Øre element. Shows examples of the different rates and uses. Very informative. Illus. Can be purchased from Skilling Publishing House in Denmark.

Danmark FIRE R.B.S. 1851-1854 — Pladning. J. Schmidt-Andersen. 1949. 46pp. Illus. plating handbook, standard reference on the issue. Bound with Retouched Cliches of the FIRE R.B.S. 20 plates. (In English).

Manual of Philatelic Judging. Third Edition. W. Bauer, Chairman, APS Judges Accreditation Committee. 1990. 120pp.

Membership Report

New Members for February 1991

- 3320 STURDAHL, Melvin E., 90 Reynolds Ave., Warwick, RI 02886
Scandinavia, U.S. By: Lamkin, 2561
- 3321 LIENHARDT, Paul M.H., 1527 High Knolls, Pittsburgh, PA 15241
Scandinavia, France, Switzerland By: Lamkin, 2561
- 3322 MELO, David J., P.O. Box 1472, Jackson Heights, NY 11372
Scandinavia, Germany, Portugal By: Lamkin, 2561
- 3323 BURSLEY, Gilbert E., 900 Snowberry Ln., Sanibel Isle, FL 33957
Norway, Turkey, Belgium, Congo By: Lamkin, 2561
- 3324 GROVE, William B., 55 Tweed Rd., Levittown, PA 19056
Denmark, Norway, Sweden, Iceland, Gronland By: Lamkin, 2561
- 3325 KIRST, Roger W., 3840 Mohawk St., Lincoln, NE 68510
Scandinavia By: Lamkin, 2561
- 3326 CARLTON, R. Scott, 8249 Four Winds Dr., #12, Cincinnati, OH 45231
Scandinavia, Research By: Lamkin, 2561
- 3327 CASE, Stella G., 208 Miller Ave., Tybee Island, GA 31238
Iceland, Norway, Sweden, US, Canada, New Zealand, Australia
By: Lamkin, 2561
- 3328 FELDT, Dr. Robert H., 1804 Walden Ln. SW., Rochester, MN 55902
Scandinavia, Baltic States By: Abel 3064
- 3329 CARLSON, Carl R., 225 S. Annin Ave., Fullerton, CA 92631-4717
Arland, Sweden, Finland, US By: Lamkin, 2561
- 3330 RHEAUME, Myron J., 1746 W. Rahn Rd., Dayton, OH 45459
Scandinavia By: Lamkin, 2561
- 3331 KRUSE, Uno, P.O. Box 137, Titusville, NJ 08560
Scandinavia, Germany, Estonia, Europa By: Oleson 3142
- 3332 LARSON, Dohn S., 2901 Breeze Terr., Austin, TX 78722
Scandinavia, US, Sweden By: Messerschmidt 3218
- 3333 CARLSON, Charles J., 1001 Hackmann Cir., Fridley, MN 55432-5759
Sweden, Norway, US By: Frigstad L-25
- 3334 GANNON, Brian L., 1076 Willow Grouse Rd., Fairbanks, AK 99712
Scandinavia, GB, US, NZ, Australia By: Lamkin 2561

New Life Members

- L-72 MARGARD, Erik, 1491 NE 102nd St., Miami, FL 33138-2126
- L-73 KAUP, Karl Lee, 154 N. Sylvester Rd., San Diego, CA 92106
- L-74 JONSSON, Wilbur, Dept. of Math, McGill Univ., 805 Sherbrooke St., W,
Montreal, Canada H3A 2K6
- L-75 HOLMES, Capt. Eric T., 1010 Pinnacle Rd., Henrietta, NY 14467
- L-76 DIRLAM, Peter B., P.O. Box 416, Southbridge, MA 01550
- L-77 KOLS, David, 1177 N. Warson Rd., St. Louis, MO 63132
- L-78 JARDINE, Neal J., P.O. Box 571267, Tarzana, CA 91357

Reinstated Members

- 2211 SCINTO, Fred, Resurrection College, Westmount Rd. N, Waterloo, ONT.,
Canada N2L 3G7
- 0995 KUIPERS, Henri, P.O. Box 1010, Lynden, WA 98264

Resigned Members for February 1991

- 2853 REIS, Werner — Member since 1985
- 2536 VAN WELIE, G. L. — Member since 1981
- 1088 CORSON, Peter B. — Member since 1965
- 1646 MARSHALL, Thomas — Member since 1973
- 3219 SCHNEIDER, Joel — Member since 1989

Deceased Members for February 1991

- 0703 PRITCHETT, Herbert T. — Member since 1953
- 1268 BAUMAN, Howard A. — Member since 1968

- 2765 HELM, Frederick J. — Member since 1983
 3211 DICKENS Jr., Paul F. — Member since 1989
 0519 HANSEN, Jan — Member since 1948

Address Changes for February 1991

- 0666 WILEY, Robert S., 9165B Sun Terrace Cir., Lake Park, FL 33403
 2178 ISACSSON, Bo, Frorievagen 6, S-522 35, Tidaholm, Sweden
 2261 LUTTIO, Michael L., P.O. Box 11922, Eugene, OR 97440-3929
 2067 RUNNING, Joseph M, 429 Supplejack Ct., Chesapeake, VA 23320
 PH-17 HET NOORDER LICHT, % J.W. J. Van Den Berg, Sportlaan 198, 2566 LH
 Den Haal, Nethlerands
 3187 HAMBERG, Erik, Timragatan 10, 162 23 Vallingby, Sweden
 L-37 BURGESSON, James, 2266 Kinclair Dr., Pasadena, CA 91107
 2270 MONTELLO, Lawrence J., P.O. Box Box 768, Chadron, NE 69337
 2394 SVENSSON, Ernest D., Correct Membership Number
 2393 HENDRICKSON, F. Scott, Correct Membership Number
 2625 DE GRANDCOURT, Erik E., P.O. Box 153084, Tampa, FL 33684-3084
 3233 HOLMES, Leonard D., Dept. Phys. Science PSU, Pembroke, NC 28372-1510
 3320 STRUDAHL, Melvin E., Name correction
 1636 PAULSON, West Deer Park Rd., Gaithersburg, MD 20877
 2560 STREED, David M., 5356 Fairfax Ct., South Bend, IN 44614
 3143 STEWART, Brian K., 4224 Myrtlewood Dr NW, #C, Huntsville, AL 35816-
 2940
 2634 LEE, Percy D., "Rosemerryn," Middlet St., E. Budleigh, Budleigh Salterton,
 Devon EX9 7DQ England
 2482 OREGON STAMP SOC. LIB., P.O. Box 82121, Portland, OR 97282-0121
 2080 WARRINGTON, Allan E., P.O. Box 270819, San Diego, CA 92198
 3002 DAHLE, Christopher E., 1401 Linmar Ave., Cedar Rapids, IA 52402
 1497 JENSON, Robert H., P.O. Box 901, Hales Corners, WI 53130
 3294 RASMUSSEN, Jan, Gravensgade 4 - sal, DK-9000 Aalborg, Denmark
 0666 WILEY, Robert S., Assigned old Membership Number
 0832 POLLAK, Henrik, 303 Fifth Ave., New York, NY 10016
 PH-67 FRIMARKSHUSET AUKTIONS AB., Humlegaidsg 13 3 Tr, S-114 46
 Stockholm, Sweden
 2554 GUSTAFSON, Richard, RSRL., P.O. Box 687, Port Norris, NJ 08349

Membership Report for February 1991

November 1990 Membership:

Regular Members	943
Life Members	54
Honorary Members.....	6
Total Membership	1003

February Adjustment:

Regular Members	+15
Life Members	+7
Honorary Members.....	0
Reinstated Members.....	+2
Resigned Members	-5
Deceased Members	-5
*Membership Adjustment.....	+11

February 1991 Membership

Regular Members	949
Life Members	59
Honorary Members.....	6

Total Membership	1014
Posthorn Exchanges	53
Circulation	1067

(*The above is the result of an exhaustive review of all records and the total shown is correct for February 1991.)

Membership Adjustment?

I have been taken to task, and rightly so, for the numbers I have been reporting on quarterly membership. It seems that I have made an error in accounting for the categories of Life, Deceased and Resigned Members! This cannot be blamed on the computer! I have since researched all hard copy and computer records and I believe now that these figures shown above in this accounting are as correct as they can be when dealing with numbers in constant transition. My apologies for the previous goofs.

—Bill Lamkin

* S * C * C *

Posthorn Index for 1989-90

Åland

New Issues Address.....	Feb. '89	Page 36
Åland, A Basket Case.....	Aug. '89	128
Åland Reprint Differs from Original	Aug. '90	128

Danish West Indies

DWI Wreck Mail — The Lost Metropolis Steamship	Feb. '89	Page 13
Northland Acquires DWI Stamp Co.	Feb. '89	36
DWI Mail Shenanigans	Aug. '89	106
DWI Postal Stationery Rarities	Aug. '89	118
Official Forwarding Agents on DWI Mail	Aug. '89	123
Revisions and Addenda to <i>DWI Mails</i>	Nov. '89	170
DWI Christmas Seals.....	Nov. '89	173
Appendix to <i>DWI Mails</i> — A Review.....	Feb. '90	36
Date Change on 4 CENTS DWI Bisect of 1903.....	May '90	80

Denmark

<i>The PR Cancel of Denmark</i> — A Review	Feb. '89	Page 35
Denmark's Newest Method of Selling Xmas Stamps	May '89	60
Prephilatelic Stamps of Hafnia.....	May '89	66
Missing Heart Discovered on Denmark Definitive.....	May '89	78
Another Radical Shift in Mail Handling	May '89	81
Sometimes You See Only What You Want to See.....	May '89	83
A Special Peelable Label Notifies Addressees	May '89	84
DK P&T Printing Chief Sundgaard, Dead at 70.....	May '89	96
Quick Check for Small Corner Numbers.....	Aug. '89	112
The Twice Utilized Cover, Danish Stationery	Aug. '89	124
Puzzling Danish Postal Rates — Follow Up	Nov. '89	154
More Valid Replies to DK Rate Mysteries	Nov. '89	157
Danish Monetary Reform.....	Nov. '89	184
Torben Geill, Dead at 93	Nov. '89	184
K.D.O.P.A. — Hamburg Handstamps 1848-1861.....	Feb. '90	10
The Pneuma-Danica Duplex Machine.....	May '90	56
<i>Danish Local Stationery: A Review</i>	May '90	68
Denmark's Se-tenants Offer Challenge.....	Aug. '90	99
Complete Set of 28 Definitives from Denmark	Aug. '90	126
New Postmarks Will Identify Denmark's Postcenters	Aug. '90	127

Danish Postage Stamp Use in Bergedorf	Aug. '90	129
Latest Denmark Postal Manual Details Services.....	Aug. '90	133
DK Address Card to Australia?	Nov. '90	154

The Faroes

New Issues Address.....	Feb. '89	36
-------------------------	----------	----

Finland

Special First Day Cancels of Finland	Feb. '89	9
Classic Kopeck and Penni Issues on Same Cover.....	Feb. '89	16
Finnish HA. 19 Booklet Subject of New Study	Feb. '89	18
What's Happening in Finland by Mike Hvidonov.....	Feb. '89	29
Harri Sihtola Dead at 39	Feb. '89	37
The 1885 High Value Emissions.....	May '89	61
P&T of Finland Lists Mini Sheet Sales.....	May '89	63
Kekkonen Park Stamp Wins Popularity Contest	May '89	63
Fascinating Finnish-American History of Postcards.....	May '89	80
Finland's Postal Rates.....	May '89	80
Suomi-Yhtyneet Kansakunnat, Finland-UN	Aug. '89	99
What's Happening in Finland by Mike Hvidonov.....	Aug. '89	114
<i>Finland's 1875 Issues: A Book Review</i>	Nov. '89	158
The Red ÅBI Cancellation.....	Nov. '89	169
Stamps: Buying, Selling or Speculation by M. Hvidonov.....	Nov. '89	168
What's Happening in Finland by Mike Hvidonov.....	Feb. '90	3
'Irregular' Finland Covers	Feb. '90	21
Finnish Kopeck Issues with Russian Numeral Cancels.....	May '90	51
What's Happening in Finland by Mike Hvidonov.....	May '90	67
New (Finnish) Promotional Sticker.....	May '90	69
Finland's Traditional Philately, No. 1 of Series.....	May '90	75
<i>Finnish Troops at UN Field P.O.s: A Review</i>	May '90	78
What's Happening in Finland by Mike Hvidonov.....	May '90	112

SPECIALIZED SALES of SCANDINAVIA

6 times a year we have a sale exclusively against written bids, specializing in:

DENMARK	FAROEES	GREENLAND
	DANISH WEST INDIES	
NORWAY	SWEDEN	FINLAND

Each catalogue contains 1200-1500 lots and is fully illustrated. ALL single stamps are illustrated in actual size, as are also many covers, etc.

Ask for FREE catalogues from:

O. GOTTLIEB A/S

P.O. Box 1019
 Viemosevej 5 C Bredballe,
 DK-7120 VEJLE OST, DENMARK
 Tel. (05) 81 61 25

Member: A.P.S. United States; P.T.S. London

Finland's Traditional Philately, No. 2 of Series.....	Aug. '90	122
Finland's Top Pick for 1989.....	Aug. '90	128
A Petsamo 'First Day'.....	Nov. '90	156
What's Happening in Finland by Mike Hvidonov.....	Nov. '90	167
Finland's Traditional Philately, No. 3 in Series	Nov. '90	173
Visiting <i>Posthorn</i> AE Ponders Problems at NORDIA 90	Nov. '90	179

Greenland

Greenland Post Service to Move	Feb. '89	15
Fabricated Greenland Covers Discovered	May '89	51
First Balloon Flight in Greenland	Aug. '89	122
Greenland Post Office Move.....	Nov. '89	161
<i>Greenland's Cancels: A Review</i>	Nov. '89	167
How to Identify Genuine Cachet Covers of Sledge Patrol.....	Feb. '90	3
Ladekarl to Ammessalik	Feb. '90	8

Iceland

Iceland's Two FRAMA Machines	May '89	59
Iceland's FRAMAs	Feb. '90	14
<i>Iceland Booklets: A Review</i>	Feb. '90	37
New Iceland Price List	Feb. '90	37
An Unlisted (Iceland) Manuscript Cancel.....	Aug. '90	115
Sickles Picked as U.S. Rep to NORDIA 91 (Iceland).....	Aug. '90	117

Norway

New Issues Address.....	Feb. '89	37
Ancient Viking Sailing Route Closely Followed.....	May '89	73
<i>Norwegian TPOs: A Review</i>	May '90	74
Norway to Honor Winners in Past Winter Olympics	Aug. '90	116
Norway Net Price List.....	Aug. '90	133
<i>Norway Rail Cancels: A Review</i>	Aug. '90	134
Uncut Norway #1 Pleases Collector	Nov. '90	177

Sweden

New Issues Address.....	Feb. '89	37
The Dark Side of Postal History (Adulterated Covers).....	Feb. '89	3
<i>Facit & SFF</i> to Combine Catalog Publishing.....	May '89	53
U.K.-Printed Swedish Discount Books	May '89	54
<i>SSF-Scott</i> Conversion Table Now Available	May '89	82
Oscar Montelius, Who's This?	Aug. '89	120
Swedish 'Immigrant Mail'	Nov. '89	147
A Review of <i>The Work of Czeslaw Slania</i>	Nov. '89	167
Hugo Alfven, Who's This?	Nov. '89	171
Atlas Handbook Över Svenska Maskintillverkadepostäften	May '90	84
<i>Kalmar Nychel: The Swedish Ship and Her Stamps</i>	Nov. '90	147
An Early Swedish Pigeon Post?	Nov. '90	150

General Scandinavian

Sr. Stamp Curator Norby Retires	Feb. '89	7
Transfers & Re-entries by Alan Warren	Feb. '89	21
Scandinavian Literature Notes by Alan Warren	Feb. '89	30
Cancel Clinic	Feb. '89	32
Scandinavian Area Awards.....	Feb. '89	34
Two More Golds in SESCO Awards	Feb. '89	34
New Issue Addresses, Bulletins for Collectors.....	Feb. '89	37
Scandinavian Literature Notes by Alan Warren.....	May '89	64
Transfers & Re-entries by Alan Warren	May '89	77
Scandinavian Area Awards.....	May '89	77

SPF Update.....	May '89	79
Rules Announced for NORDIA 90	May '89	79
Scandinavian Literature Notes by Alan Warren	Aug. '89	108
The 1990 <i>Scott</i>	Aug. '89	115
Scandinavian Area Awards.....	Aug. '89	116
SPF Update.....	Aug. '89	131
Scandinavian Area Awards.....	Nov. '89	160
Transfer & Re-entries by Alan Warren	Nov. '89	162
NORDIA 90 Jury Named	Feb. '90	8
Frye Announces New Business Changes	Feb. '90	8
Scandinavian Literature Notes by Alan Warren	Feb. '90	12
SPF Update.....	Feb. '90	14
U.S. Postnet Markings on Nordic Covers.....	Feb. '90	16
Scandinavia and World Expo 89.....	Feb. '90	19
Cancel Clinic	Feb. '90	27
Scandinavian Area Awards.....	Feb. '90	28
Transfers & Re-entries by Alan Warren	Feb. '90	28
Scandinavians Reap Awards at DELPEX	May '90	59
Scandinavian Literature Notes by Alan Warren	May '90	60
Scandinavian Area Awards.....	May '90	64
Transfers & Re-entries by Alan Warren	May '90	64
SPF Update.....	May '90	65
Cancel Clinic	May '90	70
A Way Every Member Can Help.....	May '90	77
Convention Exhibit Awards.....	Aug. '90	110
SCC at Boxborough	Aug. '90	110
Some Thoughts on Receiving the Pelander Award.....	Aug. '90	111
SPF Update.....	Aug. '90	113
Scandinavian Area Awards.....	Aug. '90	113
Scandinavian Auction a Success.....	Aug. '90	122
Scandinavian Literature Notes by Alan Warren	Aug. '90	123
Transfers & Re-entries by Alan Warren	Aug. '90	125
Capitol Unit Plans BELPEX Gathering.....	Aug. '90	132
Scandinavian Literature Notes by Alan Warren	Nov. '90	158
Transfers & Re-entries by Alan Warren	Nov. '90	164
EMS Network Opens New Vistas	Nov. '90	165
Phillip F. Robbins Obituary	Nov. '90	165
Philatelic Cannibalism	Nov. '90	169
New UNPA Chief.....	Nov. '90	172
Scandinavian Area Awards.....	Nov. '90	172

SCC Misc.

President's Message by Alfred Gruber	Feb. '89	39
President's Message by Alfred Gruber	May '89	87
President's Message by Alfred Gruber	Aug. '89	133
President's Message by Alfred Gruber	Nov. '89	176
President's Message by Alfred Gruber	Feb. '90	39
President's Message by Alfred Gruber	May '90	87
President's Message by Alfred Gruber	Aug. '90	136
President's Message by Alfred Gruber	Nov. '90	184
Executive Secretary Speaks by William Lamkin.....	Feb. '89	41
Executive Secretary Speaks by William Lamkin.....	May '89	87
Executive Secretary Speaks by William Lamkin.....	Aug. '89	136
Executive Secretary Speaks by William Lamkin.....	Nov. '89	177
Executive Secretary Speaks by William Lamkin.....	Feb. '90	40
Executive Secretary Speaks by William Lamkin.....	May '90	91
Executive Secretary Speaks by William Lamkin.....	Aug. '90	137
Executive Secretary Speaks by William Lamkin.....	Nov. '90	186

Chapter News	Aug. '89	134
Chapter News	Feb. '90	45
Chapter News	May '89	39
Chapter News	Aug. '90	138
Chapter News	Nov. '90	189
SCC Officers Slate Wins 2nd Term	Feb. '89	18
Memorial Day Selected for SCC Convention	Feb. '89	35
Windy City Unit 4.....	Aug. '89	121
Harlan W. Miller Obituary	Aug. '89	144
Letters Received	May '90	81
Next Convention in Tucson.....	Aug. '90	111
Surprise! Unopposed Nominees Win Posts	Nov. '90	150
Southwestern Hospitality Awaits Visitors.....	Nov. '90	151
The Editor's Notebook by Gene Lesney.....	Feb. '89	42
The Editor's Notebook by Gene Lesney.....	May '89	91
The Editor's Notebook by John Lindholm.....	Aug. '89	140
The Editor's Notebook by John Lindholm.....	Nov. '89	182
The Editor's Notebook by Gene Lesney.....	Feb. '90	41
The Editor's Notebook by Gene Lesney.....	Aug. '90	139
The Editor's Notebook by Gene Lesney.....	Nov. '90	185
Library News by Dr. W.E. Melberg	Feb. '89	43
Library News by Dr. W.E. Melberg	May '89	90
Library News by Dr. W. E. Melberg	Aug. '89	138
Library News by Dr. W. E. Melberg	Nov. '89	180
Library News by Dr. W. E. Melberg	Feb. '90	42
Library News by Dr. W. E. Melberg	May '90	89
Library News by Dr. W. E. Melberg	Aug. '90	140
Library News by Dr. W. E. Melberg	Nov. '90	187
Membership Report	Feb. '89	45
Membership Report	May '89	92
Membership Report	Aug. '89	141
Membership Report	Nov. '89	178
Membership Report	Feb. '90	46
Membership Report	May '90	93
Membership Report	Aug. '90	141
Membership Report	Nov. '90	189
1988 Treasurer's Report.....	May '89	86
1989 USPS Statement Form 3526.....	Nov. '89	183
1989 Treasurer's Report.....	May '90	95
SCC 1990 Budget & Proposed 1991 Budget.....	Nov. '90	183
1990 USPS Statement Form 3526.....	Nov. '90	191

S * C * C *

Postal Covers

ESTABLISHED 1972

MAIL BID SALES * * COVERS OF THE WORLD

19th & 20th Century Postal History — Topical & Thematic including Military — Maritime — Railroad — Air Mail — FDC's — Cinderella — Red Cross — Judaica — Expositions — Sports and Olympics — Postal Stationery — Picture Postcards and so much more!

ALSO: Listing of over 200 US & Foreign Catalogs and Handbooks many at DISCOUNT PRICES, including hard to get imports.

FOR RICHLY ILLUSTRATED CATALOG SEND \$1.00 to:
THEO VAN DAM — P.O. Box 8809 — Anaheim, CA 92812

Member-to-Member Ads

FREE MEMBER-TO-MEMBER ADS are available to SCC members and limited to three lines, approx. 40-45 words on a first-come basis — and also limited to only two pages per issue. Submit ads, subject to minor editing for space purposes, to the Editor. (Dealer members will not be eligible for gratis ads, but can purchase M-T-M space at the rate of 20 words for \$2. (minimum) plus 10¢ per additional word. Contact our Business Manager listed on the Contents Page.)

WANTED: SWEDISH COMMERCIAL COVERS dated Dec. 1 to Dec. 31 of years 1968-90 showing regular postage rates (not Christmas cards or holiday letters). R. Svenson, 106 Blue Hill Lane, Akron, OH 44333. (2317-1)

* S * C * C *

PLEASE SEND ME any amount of used commemoratives of Scandinavia, Iceland, Greenland or Faroes. In exchange, I will send U.S.A., So. America, Europe, Canada, etc. Jack Sender, 8130 W. Lyons, Niles, IL 60648 USA. (1-)

* S * C * C *

DANISH RAILROAD PARCEL STAMPS — Trade, swap or sell inventory of over 160 different Danish Railway Stamps, 75% large size. Send photocopy of yours and SASE for photocopy of mine. George A. Sellnau, 1511 Bering Drive, Houston, TX 77057 (713) 782-8393 (Daytime). (3239-1)

* S * C * C *

WANTED: Covers and postcards canceled on the Danish island of Endelave. Also covers and postcards pen-ink canceled on Ferry S/S Agda. Paul Oberlin, PSC #1 Box 443, Andrews AFB, MD 20331-5364. (3246-1)

* S * C * C *

WILL TRADE complete old FINLAND parcel cards (most 1920s) for parcel cards equal value from other countries. Send photocopies for my photocopies. Also want to buy FINLAND RR stamps, locals, revenues. Jacob Kisner, 254 Park Avenue South, PHF, New York, NY 10010. (2899-1)

* S * C * C *

WANT TO MAKE CONTACT with someone in Faroe Islands to learn history and culture. Also trade Faroe Island stamps and banknotes for USA or English only. Mike Willders, 121 Nelson Drive, Williamsburg, VA. (3291-1)

* S * C * C *

DENMARK STAR PUZZLERS? Identify Faareveile or Udslebne. Dispatch the few identifiable letters for computer printout of possibilities. Enclose 10¢ for each, plus SASE to SCC Delaware Chapter, Box 325, Rockland, DE 19732. (3)

* S * C * C *

Approvals — Scandinavian Countries

Stamps at Prices to Please You.

Tell Us Your Collecting Interests.

NORDIC STAMPS

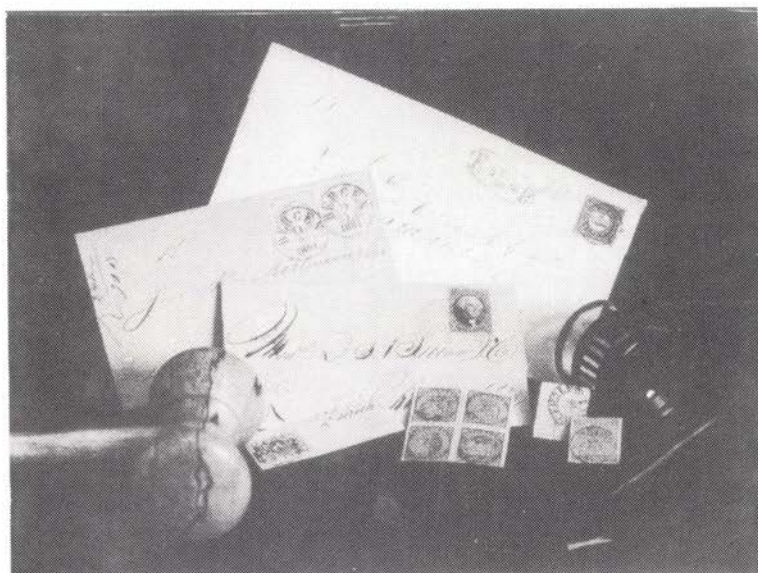
5144 I-Ah-Maytah Road, Dept. SCC, Oshkosh, WI 54901

APS 52074

SCC 1208



SCANDINAVIA'S LARGEST AUCTIONS



Contact us today and let us discuss the best possible way of selling your stamps.

If you are interested in buying at our auctions, ask for a free trial copy of the auction catalogue.

POSTILJONEN AB

Box 4118, S-203 12 Malmö, Sweden

Tel 040-72290

Tlx 32602 — Fax 040-72299



THINKING OF SELLING?

We Offer 3 Distinct Alternatives

PUBLIC AUCTION Through public floor auctions, your stamps reach the broadest possible audience in a positive selling environment. The price you realize will be determined by open market bidding, not private negotiation. Our illustrated auction catalogs and broad customer base insure that your stamps are attractively presented to active buyers in the United States and overseas. *Consign-ment deadline for our SPRING '91 auction is March 20th. Catalog \$2.00 postage/\$3.00 air mail.*

PRIVATE TREATY Specialized collections, in particular, must be presented in the proper way to other specialists in order to maximize the price realized. You set the price. We then inform selected customers of the property and endeavor to sell it within 90 days.

IMMEDIATE CASH We constantly buy and sell stamps in the normal course of our business and need to acquire collections as well as better stamps and covers from all Scandinavian countries. We provide frank evaluations and IMMEDIATE PAYMENT IN FULL for all acquired material regardless of size.

CALL OR WRITE TODAY if you are considering disposing of all or part of your collection. We can help you decide the best course of action to meet your objectives.

Call Toll Free 1-800-950-0058

in NJ 1-201-746-7982

FAX 1-201-228-1742



NORTHLAND CO.

BOX 34 • VERONA, NJ 07044

Scandinavia Exclusively . . . Since 1975

APS
SCC

