

The

POSTHORN

AUGUST 1992



New and Unique
Mint Wide Laid Watermarked 10 Kop?
Details Inside

Journal of the Scandinavian Collectors Club



Scandinavia

- Building fine collections for exhibition, research and enjoyment. Offering approvals from your specific want list or description of your specialized interests.
- Offering complete private treaty services for Scandinavian material.
- Active buyers of complete collections and individual items. High prices paid with immediate cash payment. Avoid the delays and uncertainty of auctions. I have the customers for your good material.
- Providing over 300 titles of philatelic literature and catalogs for the Scandinavian collector.

Call toll-free 1-800-44-STAMP (1-800-447-8267)

Phone: 919-376-9991 Fax: 919-376-6750

The Scandinavian Specialist since 1973

Jay Smith

P.O. Box 650-SCC, Snow Camp, NC 27349

(Formerly of Madison, WI)



The
POST HORN

Official Publication of the
SCANDINAVIAN COLLECTORS CLUB
Published Quarterly Since 1943
Copyright 1992 Scandinavian Collectors Club

Vol. 49, No. 3

August 1992

Whole No. 192

Table of Contents

Finland's Traditional Philately #7; 1866 Rouletted	Page 107
Scandinavia at WCSE 92	115
WCSE Scandinavian Exhibits	119
Literature Notes	122
Worldwide Postal Issues Database; for Scandinavians?	123
Club Elections	124
Scandinavian Area Awards	124
Unique, Unused 10 Kop. on Wide Laid Paper	125
A Reindeer Cover with Problems	127
Transfers and Re-entries	129
Three New SCC Member Services Inaugerated	131
President's Message	133
News from the Home Office	134
Library News	136
Chapter News	139
Membership Report	142

Deadline for November Issue: September 15, 1992

Editor: John Lindholm
2316 Lakeview Dr.
Fergus Falls, MN 56537
(218) 739-3260

Executive Secretary: Robert W. Lang
P.O. Box 125, Newark, DE 19715

Business Manager (Advertising):
John R. "Jack" Day, 2109 Skycrest Dr. #4
Walnut Creek, CA 94591

THE POSTHORN (ISSN 0551-6817) is published four times yearly by The Scandinavian Collectors Club. Membership, including subscription, \$15 per year. Contact Executive Secretary for membership & change of address. Advertising rates & terms available from Business Manager. Second class postage paid at Madrid, Iowa 50156. Copyright 1992 by The Scandinavian Collectors Club.

POSTMASTER: Send Form 3579 to SCC Exec. Secretary, P.O. Box 125, Newark, DE 19715

Welcome to the Leading Norwegian Stamp Auctions!



Twice a year we arrange a public auction in Oslo as we have been doing for some 15 years. The total turnover has been some NOK 10 millions a year. Each auction contains approximately 1100 lots with starting prices from NOK 100.

Our most expensive item was sold for \$125,000 in 1987; Norway No. 1 in a block of nine from the world famous "Vi King" collection formed by Mr. Jared H. Richter. This is a Norwegian all time high.

The auctions also include top quality objects from many other countries. The market for stamps in Norway is one of the strongest in the world, and this is reflected in the prices realized not only for Scandinavian items. Our computer systems includes some 18,000 customers worldwide and we believe our selling potential would be most interesting also for vendors abroad.



We would be happy to serve you. Drop us a line - or a fax or give us a call for a free copy of our auction catalogue or for further information.

Elisenbergvn 19 N-0207 OLSLO 2
NORWAY. Phone 47-2-441914
FAX 47-2-560404



Finland's Traditional Philately

No. 7 in a Series

The 1866 Rouletted Stamps

The 40 penni value is doubtless, the consequential issue and the fascinating member of the large rouletted series. It is not as large an issue as the 20p. printing which exceeded the 40p. by 1,327,000-odd. Rather, because it is the most challenging of all its predecessors, for both neophytes and advanced collectors, in the course of studying and arranging the many colors that comprise its well-dominated reign.

Specimens under view, which may initially appear to be "twin-like" in color, may later prove to be totally unrelated and a member of an unallied printing effort. Cancellation dates help stamp identifying, but they can appear in usage in different emission periods, thus color

familiarity is essential to the philatelist. Doubtless, some of the many varieties were spawned in the process of ink and fountain adjustments whereas lacquers and other color inks were utilized as distenders for reasons of economy and printing urgency.

At any rate, the 40 penni value saw successful service for mail and packages that were of greater weight and those sent longer distances both domestically and abroad. It filled adequately the time span awaiting the production and availability of the 1 Mark issue which would debut in 1867-69.

At the present time, and for some years past, one (or two?) ardent Finnish research experts, have been laboring in

Finland's Postal Archives, studying and categorizing stamp colors and dates of usage on old and historic letters in order to supply fresh and substantial information for sound cataloging purposes.

This is not an "over night" assignment and will at some time invite many committee meetings (and prolonged discussions) on the subject of the proper nomenclature to be employed for each color emission, be they new color descriptions or revisions of old color terms. While on this subject, it is known and agreed that the 20 penni stamps of 1866 also are in dire need of a complete overhaul. There are many missing gaps for Finnish researchers to analyze. It seems that these two major values suffer from incompleteness and we welcome the efforts being undertaken to make philatelic information specific and sounder.

The 40 Penni Exhibit

A substantial number of pages will be required to properly picture this emission. Collections of the Traditional can't be made in a hurry. Shopping and buying decent material will require time and capital. Try to buy good material which will return decent value should you sell in years to come. It will also help your Exhibit ratings should this become your ultimate goal.

The Exhibit Material

It is necessary that a sufficient quantity of covers and multiples be integrated throughout the exhibit to assuage the monotony of the many pages of stamps.

Some number of mint (unused) stamps must be included with as many nicely canceled stamps as you can find.

Canceled stamps are always available in Finnish auctions and other Scandinavian sales. There are a number of dependable dealers in Europe who feature a fair supply of acceptable material at given times.

A Recent Problem

In the very near past, all Finnish auction catalogs identified every offering with a description or catalog number,

enabling a mail bidder to purchase needed material properly described. Unhappily of late, one or two have failed to properly Lot and describe their offers, rendering their beautifully printed sales books useless to a significant extent.

I questioned this during a recent visit to Finland while attending an exciting Kaj Hellman Auction. The answer I received (though honest it may be) was not satisfactory. The allusion presented was that, "there are no stamp lotters interested in doing this service anymore."

Well, if a collector is bidding just to buy a stamp or two for a personal, non-exhibit collection this might suit such limited requirements.

The collector-cum-exhibitor whose needs are specific and urgent may deem the catalog valueless and relegate it to the 'round file' after brief perusal.

The query that remains is: can a philatelist seeking a very fine specimen of a mint stamp from the 40p. 1876 group gamble the \$750 catalog price with fond hope that it might be the stamp he requires? Hardly!

In effect this practice is injurious to Finnish philately and the auctioneer's reputation and tends to follow an "in-country-attitude" that has plagued Finland for many years and should be corrected.

Understanding Pricing

As I near the end of this series on the rouletted issues I will remind my readers, with incontrovertible thoroughness and graphic examples, to avoid dealers who are inclined to place a firm finger on an adding machine and hold it there until the selling price for an inferior item is out of sight.

Following a dependable *Norma*, the catalog price for a beautiful canceled 40p. stamp from the 1874 emission group would be 800FMk or roughly \$200, when other perfect . . . well centered . . . with all teeth (no tips missing) . . . no tears . . . no pinholes . . . no thins . . . no repairs and of good fresh color.



RARE FIRST COLOR shows the Carmine 40p with Roulette I and a LOVISH CDS dated 2.5.1866.

If one (1) roulette is missing or two (2) tips of teeth are pulled (not more than one half of either tooth) the price drops to 250FMk or \$67.50 in U.S. dollars. If the stamp is devoid of 2-3 full perfs the price plummets to 120FMk or approximately U.S. \$30. Unless the stamp is a rarity, and described as such in *Norma, Lape* or *Facit*, one should not pay an inflated price for damaged goods. On the other hand were this stamp to be offered at auction in prime condition, it is likely that the price would be elevated well above the catalog limit by competitive bidding.

While expertizing stamps, for several important U.S. organizations and private parties, I have learned that stamps bearing double, triple and badly smeared cancellations were purchased as Very Fine . . . at high cost. No stamp with messy cancellations can honestly be rated as Very Fine even if all the perfs are there and otherwise perfect. The best rating possible might range from Good to possibly Fine.

Condition and Covers

Adhesives on letters enjoy some flexibility as regards condition. A few flawed stamps here and there are tolerable since finding covers with unflawed stamps is difficult. A sound number of covers with beautiful stamps should serve to balance the visual

scales. Letters dating from 1874 and 1875, whereon, a typical mutilation of roulettes was inadvertent, should be represented and explained. It would serve the exhibit best if these representative examples were from the final printings of the 1875 group. They often are rather stunning, which is sponsored by some of the vivid paper colorations of these final issues. Knowledgeable viewers will understand and appreciate your selections . . . some of them are rare. Words cannot make clear the vivid paper colors that separate some of these issues from all previously seen. Some of the emissions in this group are quite difficult to acquire, if not rare. We anticipate that when the research is concluded much more will be known about the final printings.

Carmine . . . Roulette I

As prefaced earlier the 1860/5 kop., 1866/20p. and the 40p. first emissions (all rouletted I) should be in a top line Exhibit. All three will be difficult to find and will sell above catalog prices at auction.

The pictured example (one of three) is *luxus* in color and is canceled LOVISA 2.5.66. The one existing book (Finnish and English) entitled *The Early Postmarks of Finland* written by Gummesson, Ossa and Stenberg, many years back, rates the cancellation R-1 which coding labels it as "Uncommon." Always check your cancellation rarity ratings.

I believe that work is in progress on a new Handbook of Postmark Ratings which has been needed for a long time.

Roulette IV

The Spade Roulette

This roulette appears in three separate 40p. emissions: Carmine 1866; Light-red (Pinkish) 1869; Dull Carmine 1873.

Let me share some 'pricing' information that you should be aware of and follow as you would the tenets of your religious persuasions. Carmine 1866 . . . Unflawed, used . . . Catalog value . . . Approx. \$2,375. With one (1) roulette missing or two (2) half teeth

(TIPS) . . . the price drops to \$1,200. If two to three roulettes are lost the cost should not exceed \$725. I would avoid buying this last one. The Light-red emission of 1869 is much rarer. If the 'patient' is unflawed the cost would be \$3,125, the next two categories are \$1,325 and \$850 each, respectively.

Dull Carmine (1873) . . . \$2,500, \$1,750 and \$1,250.

These prices were derived from the Finnish catalog *LAPE*.

One may find the bidding stronger for the first two groups at auctions. The third group might sell for the base price or less. Simply do not pay overpriced figures when dealing in Private Treaty unless you sorely need the item in haste.

The 40p. Papers

Before I wander too far afield, let's discuss the two paper types used for the

40p. emissions.

The main printings were produced on ordinary wove paper. The second type paper is 'blind embossed' (no color) vertically, with the striations quite close. In deeply embossed subjects one can feel the ribbing. The pressure of heavy stock albums sometimes flattens the embossing out so one may have to examine the back of the stamp with a magnifier to make the determination. Even if the lines are but a few mm's, the stamp belongs to the second group.

I do not know or believe that any Roulette IV stamps are known on embossed paper. The Finnish catalogs do not list any prices on embossed stamps of the Roulette IV variety.

However, for the record, a Frimärkshuset sale in Sweden, 9 April 1960



BLOCK OF FOUR dark carmine 40p. stamps sport the usual Roulette II; but closer study reveals the lower-right stamp to be an example of the elusive Plate Type 14.



A NICE EXAMPLE of a domestic letter franked with a 40p Type II, cliché #42 stamp of the dark carmine emission.

(Lot #304), of a gold medal collection, offered an embossed R. IV as 'unusual.' This, to my knowledge has not appeared again and may have been forged. Only time will tell.

The 40p. Type II Plates

Three plates locked in a chase of 50 are physically different than the balance of the clichés. They are known as field types #14, #19 and #42. Their conjectured history seems plausible. There may have been a shortage of 40p. clichés or a few plates were damaged in printing requiring that the centers be removed from 20p. plates and jobbed into the 40p. stamps.

The three 'bastardized' plates are known as Type II. They are not regarded as errors because they were created for need with intent. Mathematically, it is said that the three types are 6% of the gross printing, according to the *Finnish Handbook*.

Research?

I have not heard of any research efforts by the Finns as relates to this special group. The collector should try to obtain decent quality copies of all three for exhibit.

I have two covers of different varieties and have not found the third in years.

Should you acquire any pairs, strips or multiples check to see if a Type II is included. While this may not be 'earth shattering' you will know that you have a fine item indeed.

The pictured 4-block, unused, has Type #14 in the SE corner. All three varieties are identified by plate flaws existing in either the top or bottom value slugs.

40 Penni Roulette Types

All existing rouletting discs were employed on the 40p. stamps. As previously noted, Roulette I was used in 1866, 1872 and 1873, Roulette 4 . . . in 1866, 1868 and 1872.

Roulette V . . . is a great rarity on a 40p. stamp. It is immeasurably more expensive and rarer than the 8p. counterpart. I believe that only 5 or 6 have been recorded and assumed to exist.

Mixed Roulettes

According to *LAPE*, compound roulettes are known as: II:V, V:II, II:IV, IV:II and II:III. Please understand that the numeral II represents R. II and

III which is Roulette C. The first numeral always alludes to the north or top of the stamp and the bottom perfs. The second numeral represents both the left and right sides of the stamp or east-west.

If a stamp has three sides detailed as I:II, II:II it describes a very rare roulette (usually) where the top is Roulette A and the other sides are all B's (R.II).

All rouletting oddities are important and should be featured. These include double perfs. step perfs., partial perfs., diamond perfs., stamps with large gutters in between, partial imperfs and full imperfs and those with a fine offset transfer on the back of the adhesive augment much interest to the display.

It would seem that tired people and worn rouletters nearing the end of the large roulette epoch might have been

more error prone thus a few more may be found in the 40p. group than in the earlier issues. Be that as it may, try to buy them when they appear, for it is not too often that the chance comes one's way.

I'd look for a little more quality when buying a 40p. oddity.

Canceled Multiples

Used multiples, even pairs and rows of three and four etc. are rare. A group of 41 is reputed to be in a Finnish collection that once belonged to Fabergé. Groups of 20, 15 and 12 are known.

The pictured group of five is from the light red emission of 1869 and will remain in my collection forever, reasonably.

A Special Cover

The combination of a 40p. plus 20p. is a must for a well rounded collection. They do appear in auctions abroad and are almost never offered in the U.S.

If you can find them it would be correct to include one or two in the 40p. display as well as one in the preceding 20p. segment.

The postage is a 2nd class rate and the additional 20 p. covers Registry or added weight. The scribbled 1-1/2 is the PO marking. (See next page.)

The roulettes are unflawed and nicely placed. The 40p. is from the lilac-red emission of 1874; the 20 p. blue is from a somewhat earlier printing.

The 40p. on 1860 10kop. Paper

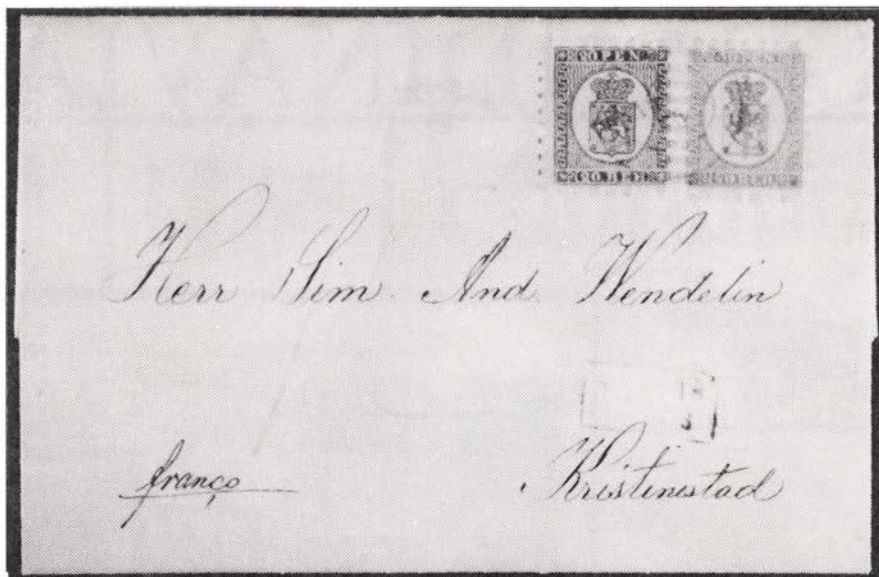
As the 20p. blue 1866 stamp was printed on a limited number of remainder sheets from the 1860 era, so were some quantity of 40p. stamps printed on the 10 kop. paper of 1860. To date, either of these items are very unusual if not Rare.

LAPE, a very up to date catalog, adds a premium of 4000 FMk (about \$1,000) to the value of either of these two gems verifying the importance of both.

Should you think that you have come upon either one get it certified by



LIGHT RED 40p BLOCK of five with a 2.6.69 Helsingfors cancel.



LILAC RED OF 1874 with a blue 20p make up the 2nd Class rate for a letter over two ounces sent over 200 Km. distance.

an expert in Finland. It should be sent to the Finnish Philatelic Federation with a letter describing what you wish to know. They will study it and return it certified (or rejected) for a reasonable fee.

For your own study I suggest that you view the stamp and a normal

10kop., or 5kop. under north light . . . no sun . . . no deep shadows. Lay them side by side alternately on white paper and black paper. Rest your eyes in between studies and keep viewing to see the differences for yourself. It is worth the effort. Good luck.

* S * C * C *

New Membership Application Enclosed

*It's not for you
to keep —
Give it to a
Non-member*

Scandinavian Collectors Club 1993 Library Index

**Lists all articles, books and
other references!**

*Services available by mail
to all members.*

96 pages

Subject Cross-Index

Author Cross-Index

Compiled & Edited by:

Dr. W. E. Melberg, SCC Librarian

P.O. Box 134

Allenton, WI 53002

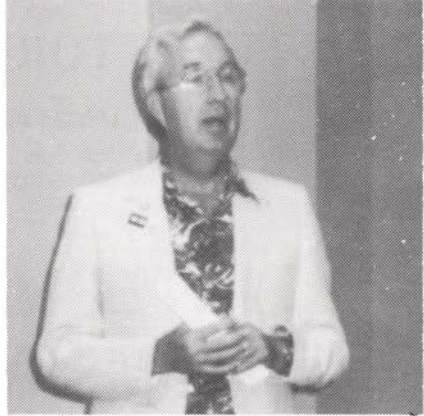
\$6.00 Donation is Requested

Scandinavia at WCSE 92

By Allen Warren



Christian Sundman delivering an excellent lecture on the history of the Finnish Posts.



President Roger Schnell addressing the club.

There was much to see and do at World Columbian Stamp Expo 92, held at the O'Hare Exposition Center in Rosemont, Illinois May 22-31. SCC had a table jointly sponsored by the Club, the Scandinavian Philatelic Foundation, Chapter 17, and the Scandinavian Philatelic Library of Southern California. Fred Bloedow of SCC Chapter 4 was the stalwart booth sitter, and was rarely alone with other Chapter 4 members helping out as well as many other SCC members.

Meetings

An informal meeting was coordinated by Chapter 4 on May 24 with 19 people present. Fred Bloedow introduced Frank Banke from the Danish firm of A/S Robert Bechsgaard. Gunner Joos of the *FACIT* catalog firm announced that Subway Stamp Shop of New York would be taking over distribution of their catalogs in the United States this year. Hugh M. Goldberg of Subway was on hand to announce that a special offer would be made to SCC members. He also indicated he would offer preprinted Scandinavian pages for the "Imperial" albums.

Gunnar Joos then conducted a door prize drawing, to which Hugh Goldberg donated a copy of *Linn's World Stamp Almanac*, and Joos provided a number of sets of Nobel maximum cards. A slide program was then presented on "What to Collect When You Have Run Out of Things to Collect." This interesting project was put together by Norm Andrews and Ron Collin and showed how to collect town cancels, Danish advertising pairs, tete-beche pairs, coil pairs, maritime cancels on stamps of other countries, and postal stationery.

On May 28th Chapter 4 held a meeting following dinner at the Golden Flame restaurant with 34 people in attendance. Following a few words of welcome by chapter president Anders Melberg, auctioneer Norm Andrews ran a spirited session with some of the proceeds benefitting the SCC Library.

On May 29 President Roger Schnell led a meeting of the Executive Committee with 17 people present including many of the directors. He explained some of the recent changes in officers and committee chairs, and announced some new columns will appear in *The*



LARS TORE ERIKSSON



Frimärksauktioner



Box 250, S-391 23 Kalmar, Sweden
Tel: +46-480-15090 Fax: +46-480-15006

**INTERNATIONAL
STAMP AUCTIONS
TWICE EACH YEAR**

SPECIALISTS IN SCANDINAVIA

We are one of the best . . .
and we **HAVE** got the know-how!

Contact us today so that we can discuss the optimum
way of selling your stamps.

If you are interested in **BUYING** at our
auctions, please ask for a free catalogue.

We look forward to hearing from you!

LARS TORE ERIKSSON
PO Box 250, S-391 23 Kalmar, Sweden

Posthorn. Upcoming SCC national conventions will be held at FLOREX 92 in Orlando, BALPEX 94 near Baltimore, and SESCAL 95 in Los Angeles. Sites for the 1996 and 1997 conventions are under review. An excellent banquet at the Holiday Inn capped the day's festivities.

On the next to last day of the show, Saturday, May 30, the SCC meeting

was held with 45 in attendance. Featured speaker was Christian Sundman of Finland, who spoke on the early issues of that country. He used slides showing prestamp and feather letters, the "portostempel" stamped envelopes, and early issues of Finland.

(Editor's note: Thanks to Roberta Palen of Chapter 4 for photos.)

* S * C * C *

PERSONAL SERVICE

ON SCANDINAVIAN PHILATELIC MATERIAL

Stamps (MNH, LH, Used), Booklets, FDC,
Mixtures and Specials

SEND FOR FREE COUNTRY PRICE LISTS

Jack F. Schmidt
805 W Hermosa Place Green Valley, AZ. 85614-2014

Member SCC, Chapter 17, Chapter 25

ICELAND SWEDEN

**LARGE
STOCK
including
the ...
RARITIES**

*Send for my
FREE
PRICE LIST!*

KARL A. NORSTEN
Box 907, S-181 09
Lidingo, Sweden
Fax 011-46-8-731-0244

**Denmark - Faroe Islands
Greenland - D.W. I.
Finland - Åland - Iceland
Norway - Sweden**

✍ and send a want list
we quote you prices with
photocopies

**50 Years Old
and Large Stock**

A/S Robert Bechsgaard Stamps

Julius Thomsensgade 7

Dk- 1974 Frederiksberg C. - Denmark

Phone (+45) 3135 6832 - Fax (+45) 3135 6232

Scandinavian Exhibits at WCSE 92

By Alan Warren

At the World Columbian Stamp Expo the grand award and reserve grand award in the APS competition went to prominent Scandinavian collectors. The grand award went to Mike Hvidonov for his "Traditional Finland 1638-1885" along with the APS pre-1900 medal and the SCC bowl. Howard L. Arnould received the reserve grand award for his "Danish West Indies Postal History — Foreign and Private Postal Services" along with the Postal History Society medal and the best foreign postal history award.

In a special category coordinated by the American Topical Association and entitled *Columbus and Exploration*, Dan Laursen exhibited "The Vikings: The Scandinavian View of the Discovery of America." However, the creme de la creme of exhibits were to be found in the International Court of Honor — the Aristocrats of Philately. One of the delectable items found here was a tete-beche pair of the Swedish black local issue provided by David Feldman — a unique item and perhaps the most famous piece of Swedish philatelic material after the 3 skilling banco yellow error.

Another well known exhibit displayed here was Roger Schnell's "Classic and Bicolor Stamps of the Danish West Indies" with eight frames showing many rarities, unique items, and covers to unusual foreign destinations. Perr Lorentzen's famed "Denmark Nos. 1-10, 1851-1863" filled another seven frames with breathtaking beauty. Frantz C. Moldenhauer, Jr. again showed his "Norway 1845-1875" with stampless covers, earliest recorded strike of the red Christiania cds, ship's mail markings, and the classic stamps including foreign rate covers.

While walking the aisles of the International Court of Honor, one suddenly came up short with a long row of empty

frames. These were to have contained Gene Scott's classic Denmark and Iceland numeral issue exhibits. However, they were missing, and in each frame was simply a sign which read, "Dr. Gene Scott, Though Agreeing to Exhibit to the Court of Honor, Failed to Carry Out His Commitment."

In the COMPLEX group of exhibits was Harvey Gudmundson's "Iceland Postal Stationery" which won a silver. The Collectors Club of New York had many single frame entries including one on "Denmark: The First Airmail Issue on flown Covers" by Louis Staub. In a similar series of one-framers by the Collectors Club of Chicago, Les Winick showed his "Iceland Zeppelin Mail."

This show was also the venue for the spring meeting and competition of the American Philatelic Society. Roger Quinby received a gold for "Finland's 1891 Ring Stamps and Postal Stationery;" Allan Warrington won a vermeil for his "Norway Small Die Posthorn Issues 1886-1894;" Mike Hvidonov and H. B. Arnould won gold medals and more. The quality of all the entries was reflected by the fact that there were 20 gold medals and 22 vermeil medals awarded, with no lower awards.

Chapter 4 One frame Exhibits

An amazing array of Scandinaviana was put together by Chicago Chapter 4. Thanks to Doc Melberg and all the other committee people and exhibitors for bringing such a diversity of nordic philately to the viewing audience.

Chapter 13 — One page on each country and information on SCC from the World Stamp Expo 89 show.

Chapter 4 — "Tribute to Christian Sundman" calling attention to his lecture later in the week.

Dave Anderson — "Sweden's Lion Types" with shades, cancels, and usages.

Norm Andrews — "Sweden Railroad

ICELAND WANTED

We are seeking better quality stamps and covers of Iceland. We are interested in the following:

- *VF NH 1873 to date
- *VF LH 1873 through 1933
- *Covers and cards especially before 1944
- *VF used through 1933 including town, numeral, crown and tollur cancels
- *Pairs, blocks and larger multiples
- *Individual rarities
- *Advanced and specialized collections

*Buy list available on request.
Inquiries welcomed.
What can you offer?*



**HAKENSONS
SCANDINAVIA**

10662 Lora Street
Temple City, CA 91780

APS

We buy all Scandinavia

SCC

Cancels" showing five of the seven major types of Järnvägspost Stämplrar.

Norm Andrews — "Finland Numeral Cancels" reflecting rural mail stops such as farms and homes.

Nancy Blouin — "Denmark Perfins" identified by firm name and period of use.

Nancy Blouin — "Denmark Look-Alikes" showing the fine points of identifying similar stamps by shade, perforations, watermark, paper, etc.

Ben Cohen — "Sweden 1924 UPU Issue" with particular attention to cancellations in Stockholm and on the special train and boat excursions.

Ron Collin — "Iceland Postal Stationery" with single and double postal cards and letter cards.

John Dasher — "Sweden Numeral Issues" reflecting a study of shade varieties in the two perforation types.

Bob Fashingbauer — "Denmark — What is so Rare as a Perfect Cancel?", giving examples of neatly placed cancellations, many of them SOTN ("socked-on-the-nose").

Leroy Ferber — "Scandinavia — It Happened One Night" being an analysis of a club meeting's amazement with a bunch of stamps taken from commercial mail.

Niels Finsen — "Iceland Fish" showing perforation varieties on and off cover.

Niels Finsen — "Greenland 1938 Issue" with singles and multiples, plus several fascinating Greenland covers.

Doug Follkie — "Scandinavian Stamp Exhibitions" starting with a 1928 Finland show using overprinted stamps, and showing some Denmark and Iceland show memorabilia.

Bob Frigstad — "Hamburg Markings on Early Norwegian Covers" including examples of Thurn and Taxis, Royal Prussian, Royal Danish, and Swedish-Norwegian post office markings.

David Goins — "Denmark" showing Philip Bates' reprints of the skilling issue, and examples of proofs, essays, and printing varieties of Danish stamps.

Alfred Gruber — "The Swedes Came to America" as seen by a survey from the immigrant mail period to the 1988 anniversary covers.

Annette Gruber — "Early Scandinavian Christmas Seals" with examples from the early 1900s from several countries.

Harvey Gudmundson — "Minor Imperfections on Iceland's Stamps" as seen in printing varieties with normal stamps in

comparison.

Don Halpern — "Danish Mail Abroad During the Napoleonic Period 1792-1814" revealing an in-depth study of route and rate markings of the period.

Maurice Hanford — "Iceland — Prentspjald" being an overview of the printed cards used for advertising and announcements.

Glenn Hansen — "Denmark's Postfaerge Stamps" with overprint varieties and usage on fragtbrev and tags.

Stanley Hanson — "Norway: the 20 and 21 mm Numerals" showing paper and printing varieties.

Ole Hellsten — "Denmark Numeral Cancels 1864 and Later" with emphasis on the cancels found on the 4 skilling and royal emblem issues.

Robert Lang — "Lighthouses of Scandinavia" with examples of stamps, cancels, and cachets depicting Scandinavian lighthouses.

John Lindholm — "Swedish Families in the New World," telling the story of Swedes coming to America with personal references to his own family history.

Florence Melberg — "Signs of the Vikings" which tells the story of the Vikings and their travels by way of the stamps and covers of Scandinavia.

W. E. Melberg — "A Danish Odyssey" being a fascinating potpourri of Denmark with examples of Bornepost, pen cancels, use of postal stationery cut-outs, multi-forwarded covers.

W. E. Melberg — "The New World," the story of early pre-Columbus visitors to America with emphasis on the vikings.

Paul Nelson — "Danish Revenues," being a study of the documentary revenue issues of Denmark.

Ross Olson — "Postage Stamps of Sweden 1921-1936" surveying the King Gustav V left profile issue with examples of perforation, shade, paper, and printing varieties.

Steve Potter — "Scandinavian Revenues" with various tax stamps as well as locals and Cinderella material.

Roger Quinby — "Karelia" showing some rare material from a 1927 postal episode which lasted a little over two weeks.

John Schaad — "Norwegian Booklets" with a look at the vending machine booklets from 1955 to 1979.

Myrtle Sheets — "Scandinavian Vikings" being another view of the Vikings using the issues of Scandinavia as well as other countries.



Scandinavian Literature Notes

By Alan Warren

In the April issue of *Luren*, Stig Kjellander continues to write about the Charta Sigillata of Sweden. In this article he discusses the third through fifth issues, covering the period 1748 to 1844. Eric N. Jackson writes in the March issue of *Scandinavian Contact* about the Swedish transit markings on mail from Norway going abroad, including railway and ship markings. Roger Partridge provides a fourth part in his series on postal history of Scandinavia during World War I, and Olga Ellis continues her series on the handstamps and cancellers of Christiana, Norway.

In the April issue of the British journal *Stamp Lover*, Eric Glasgow presents a brief overview of the stamps of Greenland. In the German publication *Philatelistische Nachrichten* for February, the various study group editors continue their series begun in earlier issues. These include a discussion of paper and gum varieties of Danish stamps, Finnish railway markings, and the Sirius sled patrols of Greenland. In the same issue Günter Pansegrau writes about the plate varieties of Iceland's Two Kings issue, and Jürgen Tiemer describes the use of telegrams in Norway.

Faroes Post Offices

In issue 1/1992 of *North Atlantic Philately*, Edvard T. Jónsson and Kristian Hopballe explain that many types of facilities in the Faroes are loosely termed "post office." In fact, there is only one post office and that is Tórshavn. The remaining locations, many of which have their own cancelling devices, are defined as postal expeditions, sub-offices, and exchange offices.

In the May 1992 issue of *Bälte-*

spännaren, the Swedish journal of Cinderella material, Åke Torkelstam discusses freight stamps and package receipts, and Stig Kjellander writes about Charta Sigillata. In the Dutch journal *Het Noorderlicht*, J.A. Konings discusses Norwegian emigrants to the U.S., with references to stamps from both countries, and J.L. Jvangean describes Umberto Nobile's attempt to reach the north pole in a dirigible.

Chr. Rimestad writes about the 80th anniversary of the Horsens Stamp Club in Denmark in the March issue of *Dansk Filatelistisk Tidsskrift*, including the special project engaged in 1941 to prepare an official cachet for the Vitus Bering issue. Niels Klottrup illustrates some money letters in his article which covers such items over the period 1871-1919. The May issue of the same journal carries an interview with the new head of Greenland's philatelic sales agency, Hans Bischoff. He has been a stamp collector himself since 1956.

Swedish Cancels

Another installment of the project to catalog the Normal cancel Type 10 of Sweden is presented in the January-February issue of *Svensk Filatelistisk Tidsskrift*. The March issue contains reports of the 1991 accomplishments of various committees of the Swedish Federation (SFF). In the April issue of this journal authors Bo E. Stavenow and Erich Harbrecht describe the perforation varieties of Sweden's Arms type issues of 1858-1861, and editor Gösta Karlsson presents a profile of George B. Lindberg on the occasion of his 85th birthday.

The April and May issues reflect increased use of color in this excellent journal. Editor Karlsson, writing in the

May issue, presents a brief history of the group specializing in military postal history, Sveriges Militär Post Sällskap. In Volume 10, Number 1 of *The Philatelic Foundation Quarterly*, the Foundation's Expert Committee ana-

lyzes a triple combination 1868 letter from Puerto Rico to New York, bearing stamps of the U.S., Danish West Indies, and the Spanish Antilles.

* S * C * C *

Will the WPID Meet the Scandinavian Collector's Needs?

The APS Computers in Philately Committee (CPC) is currently developing the Worldwide Postal Issues Database (WPID) for use by APS members. The WPID is a significant endeavor that will provide a general philatelic database program that will process postal issue databases that have been prepared for individual countries such as each of the Scandinavian countries. In my personal opinion, the Worldwide Postal Issue Database will greatly enhance the sophistication and enjoyment of the philately of Scandinavian countries.

Each country's database will contain the following types of information for each stamp of the country:

—Characteristics such as issue date, type, face value, color, perforation, watermark, etc.

—Varieties will have the same basic information plus their identifying characteristics, such as watermark and perforation differences, color variations, overprint errors, double impressions, cracked plates, etc.

—Topics referenced in the stamp design

—Marginal markings

WPID will also provide templates so that users can enter the catalog numbers for stamps and varieties from up to four of their favorite catalogs, as well as the characteristics of individual stamps in their collections such as form, value, condition, quantity on hand, etc. (Each user must enter catalog numbers and values because certain catalog publishers have so far denied permission to include them in the database program.)

Databased records can be retrieved

and sorted on most of the stamp characteristics. Reports could provide the following outputs:

—Listings of stamps and varieties sorted by catalog number or other characteristics

—Listings and pricing of the inventory of individual stamps and varieties in a collection

—Want lists of stamps and varieties for which want list flags have been set

—Multi-country listings for topical collectors of stamps from specified countries that reference specified topics in the stamp designs

Lois Evans-de Violini, chairperson of the APS CPC, is developing the basic database processing program. I am helping in the design of the database records, particularly to insure that the WPID can store the various stamp characteristics in major Scandinavian catalogs such as Facit, AFA, NK, and Norma. The ability to handle the needs of Scandinavian specialist collectors has significantly increased the power of the WPID.

A prototype WPID program will be running at STaMpsHOW 92 in Oakland this August. Groups of volunteer "input experts" will be preparing WPID databases for various countries; Japan is completed except for entry of the stamp design topics. Scandinavian collectors should contact me if you would like to receive documentation on WPID and, more importantly, if you or someone you know would like to participate in the groups of input experts who would develop WPID databases for each Scandinavian country.

—Reino Merikallio

* S * C * C *

Club National Elections SCC Part of a Great Democratic Society Get Your Nominations In!!

Yes, the Scandinavian Collectors Club has elections too. There is a duly constituted political process. If you are not enthused about your choices in the coming US presidential elections why not get involved in a national election at the local level? We elect a president, vice-president, secretary, treasurer, and three directors-at-large. Now is the time to nominate candidates. The by-laws state, in Article VI, Section 6. Nomination by Members of Chapter:

Nominations may be made by mail

to the Secretary by a chapter, properly signed by the President thereof and attested by the Secretary of the chapter or by six members eligible to vote. Nominations may be for an entire slate or for any one or more offices to be filled. Nominations by members or chapters must be received by the Secretary not later than October 1.

Send your nominations to: Ray Erickson, 5427 Delia Way, Livermore, CA 94550.

* S * C * C *

Scandinavia Area Awards

At the Alaska Philatelic Exhibition, Bob Spaugy won a silver for his "Greenland" exhibit. At MILCOPEX, in Milwaukee, a gold medal went to Roger P. Quinby for "Finland's 1891 Ring Stamps and Postal Stationery" along with the APS pre-1900 award. A silver-bronze went to Ross Olson for "The Postage Stamps of Sweden 1910-1936." At SANDICAL Roger Quinby's entry received a vermeil along with the AAPE award of honor. At the same show Dan Laursen received a vermeil also for "Danish Postal Stationery 1864-1908" along with the UPSS red certificate. Another winner at this show was Donald B. Brent with his "Denmark's Wavy Lines 1905-1934."

Dan Laursen's Danish postal stationery also won a silver at ARIPEX along with the UPSS red certificate again as well as an AAPE pin. At the SPRINGPEX literature competition, *The Posthorn* won a vermeil. At Florida West Coast Stamp Expo, Roger Schnell received the reserve grand for his "The Private Shipletter Stamps of St. Thomas, La Guaira, Puerto Cabello 1864-70." A

silver went to Roger Quinby at the Garfield-Perry March Party for his "Aunus: July 7 - October 15, 1919," and at CIAPEX Gregory Frantz won a gold for his "Denmark Local Post."

At CERAPEX 92 in Cedar Rapids, Iowa, April 4-5, Gayland Ricklefs won first place in Postal History and a gold for "Postal History of Thule, Greenland" as well as third place and silver medal for "Early Greenland Philately." He was the winner of the Brookman Trophy for the best exhibit by a club member. Betty Rutherford received a second place and a silver for "Postmarkings of the Faroe Islands" in the Foreign Class. (*See news of WCSE 92 Scandinavian area awards in articles on WCSE 92 elsewhere in this issue.*)

* S * C * C *

**New SCC Membership
Applications Enclosed
in this Issue**

*Put it to good use by
signing up a new member
for SCC TODAY!*



THIS UNIQUE MINT COPY of the Finnish 10 kop. oval on vertical laid paper was discovered in the collection of an Estonian collector. It was first shown in Vilna, Lithuania, during an exhibition in 1989. This photo has been provided by Swedish dealer Rolf Gummesson of Stockholm.

Unused 10 Kop. on Wide Laid Paper Discovered at Exhibit in Lithuania

The wide laid watermarked 10 kop. oval of 1859 sports an air of mystery supported to a degree by rumors that have surfaced over the years. One can find modest contradictions here and there, but it is only when we collectors who research tirelessly are rewarded with a photograph and a photograph and an authoritative press release that we are permitted to make a certain and valid statement to the world.

An Unused 10 Kop. Wide Laid Rarity

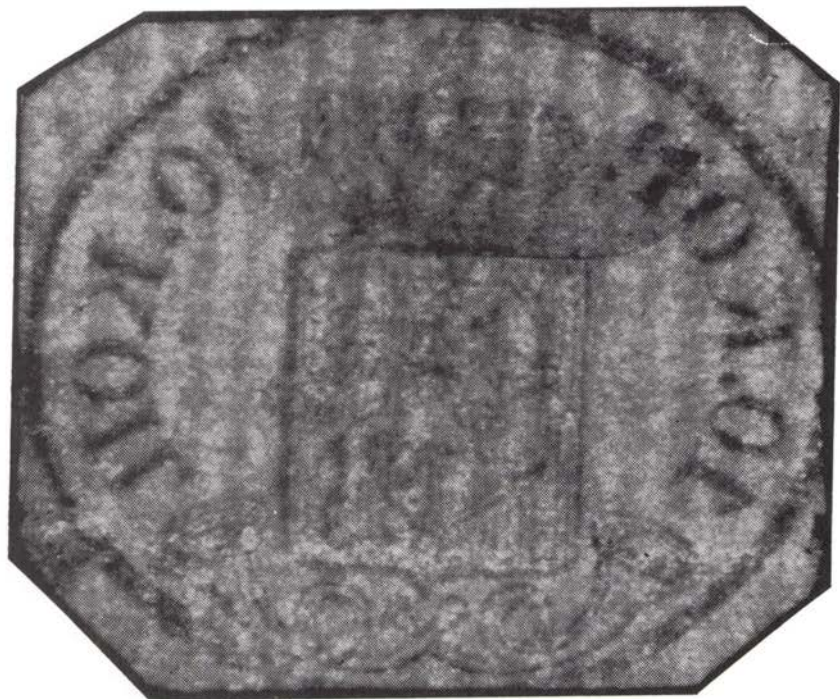
From Rolf Gummesson, the Swedish dealer and collector, we have received the picture of an existing rarity of great consequence. It is the only one of its kind ever reported.

The correspondent states that it is

“unique.” He discovered it at a stamp exhibition in Vilnius, Lithuania, during Easter of 1989. After a failing effort to barter or purchase this grand item, he decided to send the knowledge of the finding to *The Posthorn*. The illustrated ribbed back of a similar item may allow our printer to show the vertical laid lines that give the oval 10 kop. stamp its license to fame. These lines measure about 13 to 14 per 2 cm. Some published measurements vary fractionally from this figure.

Unpriced in Catalogs

According to Mikko Ossa in *Åbophil* 5.12.1989, “A rumor existed that two or three wide laid mint (stamps) should exist. If they do, this has never been confirmed.” So, for the moment we now



VERTICAL LINES OF THE LAID PAPER are seen better on the back of this used copy of the same distinct printing. The stamp on the previous page is the only known mint example!

have one! The odd cropping of the item does not detract from the "unique" gem. The Finnish catalogs do not list prices on it for obvious reasons.

Gummesson did not stipulate the emission color, which is secondary of course. However, for the record the wide laid 10 kop. exists in three variations; red-carmine, carmine-red, and orange-carmine. The latter orange-carmine is a rarity. Possibly less than three or four copies may exist. The two that I have seen are in big Finland exhibits. Another gem from this emission is a pair on cover. Perhaps two other copies may exist? It is far from easy to find a lone stamp on letter.

This writer notes in culmination, that the 5 kop. counterpart of this 10 kop. beauty, can safely boast (at this time) that only two of this lower denomination are known to exist with the wide laid paper feature.

Our thanks to the Swedish correspondent.

—Mike Hvidonov

**Membership
Application
Enclosed**

*It's Brand
New!*

**Find a
New Member!**

'Santa' or 'Reindeer' Letter? Or Just Another Problem Cover

By Paul H. Jensen



DOMESTIC USAGE & FOREIGN TRANSIT occurred in 1858 when this letter from Alten was carried by Norwegian Reindeer Mail to Koutikeino/Kare-suando and forwarded in a sealed mailbag by Swedish post "via Haparanda" to Stockholm. It then went back to Norway and was sent on to Christiania. Correct postage for transit through Sweden was 8 skillings (Postal Law 1.1.1856). It appears that the letter was folded just above the handwritten line ending with "via Haparanda."

The above cover dated 20 Jan. 1858 was posted by the winter route from Finmarken Amt via Haparanda, Sweden, to Christiania, Norway. This route was used because the coastal steamers did not run in winter months. The postage rate of 8 skillings was prepaid as of 1 Jan. 1856.

And the cover is correctly franked with 8 skilling, but there are reasons to believe that this nice grid canceled pair of Norway #1's has been added to the

cover at a later stage — probably in modern times. This conclusion is based on the following:

1.) The stamps are NOT tied by a grid cancellation. One can read part of "Franko," which in this case would mean "prepaid in cash."

2.) The stamps are canceled by grid cancellation. The grid cancelers were officially withdrawn from post offices two years earlier by order dated January 26, 1856, to be re-engraved into 3-ring

numeral cancellations. Some post offices retained their grids, but it is highly improbable that ALTEN did!

3.) One can also notice offsets from numeral cancellations on the back of the cover, as well as an offset of the CDS. This indicates that the next letter in the bundle had been prepaid with postage stamps, which had been properly canceled with ALTEN's numeral canceler (#11).

4.) The use of Norway #1 in 1858 is unlikely. The introduction of the perforated 4 skilling Oscar issue in December 1856 made the first issue obsolete. Genuine cancellations in 1858 and later are extremely rare.

This is a nice cover prepaid in cash which has been "improved" by a pair of Norway #1's, which do not belong on the cover. "Things are not as they first seem to be."

* S * C * C *

Kudos to Our SCC Dealer Members

A very special thanks goes to several of our SCC Dealer Friends! They have displayed extraordinary support for our membership recruitment and retention efforts and deserve a big hand of THANKS from all of us in SCC!!

More specifically I want to single out some of the more recent efforts they have displayed on our behalf!

Jerry Birdsall of Northland Co. agreed to include in his most recent mailing, a copy of our new membership application blank. This mailing went to 1500+ Scandinavian collectors and already we are seeing some positive results. **THANKS, JERRY!!**

Jay Smith arranged for a special discount at the WCSE Booth for any person who would join SCC while at the Show!! We know that several of the new members we signed up at the show took advantage of Jay's offer. **THANKS, JAY!!**

Jerry Strauss, who runs Lizabeth Stamp Co., has offered to pay the 1994 dues for anyone of his customers who joins SCC through him by July 15, 1992. This is a very generous incentive and we hope it bears fruit. **THANKS, JERRY!!**

And lastly, but not leastly, Scott and Joanna Taylor of Scojo Stamps, have for years presented a lovely "Orrefors" Crystal Bowl to the owner of the Best Scandinavian Exhibit at our Annual Meeting Show. This year Mike Hvidonov was the

winner! And Mike also won the "GRAND" Award for Best in Show. Congrats to Mike! and **MANY THANKS** to our **SCOJO FRIENDS!!**

With dealer friends like those mentioned above, our society is bound to flourish and grow! Thanks, again, folks!

* S * C * C *

Royal Silver Anniversary (News from Greenland and Denmark)

Queen Margrethe II and her husband Prince Henrik celebrated their silver anniversary June 10, 1992 and on the same day Denmark and Greenland each issued a stamp of the same motif to commemorate the event.

The stamp, approved by Her Majesty, shows the royal couple as they appear today on the background of their wedding picture.

Popular for her "unsnobbish," straightforward bearing combined with a natural friendliness, Queen Margrethe is the only royal head who has contributed actively to philately by designing the Danish stamp commemorating the 40 year anniversary of Danish liberation from German Occupation (Scott #B66). The Queen also designed the Danish Christmas seal for 1970 as well as the 1983 Christmas seal for Greenland.

—Dr. Dan Laursen

* S * C * C *

Transfers & Re-entries

By Alan Warren

Olga Ellis, who writes extensively in the pages of the British journal *Scandinavian Contact* on Norwegian philately, has been awarded the Golden Posthorn by the Oslo Philatelic Society. This distinguished honor was first conferred in 1890, and is presented to an outstanding person, for service to the club or to philately in general, just once every five years. Olga is also the representative for Great Britain to NORDIA 92; scheduled for Kristiansand, Norway October 8-11 this year.

Other representatives are Roger Schnell for the U.S., and Jürgen Tiemer for Germany. Commissioners from the nordic countries are Hans Jørgen Høy for Denmark, Risto-Matti Kauhanen for Finland, Jón Adalsteinn Jónsson for Iceland, Per-Anders Erixon for Sweden, with Paul Jensen as general commissioner and chief commissioner for the host country of Norway. Paul is also serving as senior consultant to the jury.

The rest of the jury consists of Eivind Evensen, Torbjørn Larsson-Fedde, Gunnar Loshamn, Johnny E. Pedersen, Ivar Sundsbø, and Egil H. Thomassen for Norway; Jesper Haff and Frode Vesterby Knudsen for Denmark; Pennti Anttila and Risto-Matti Kauhanen for Finland; Olafur Eliasson and Jón Adalsteinn Jónsson for Iceland; Harry Berglund and Per-Anders Erixon for Sweden. Apprentices are Ingolf Kapelrud of Norway, and Per Fabricius Jensen of Denmark.

Norwegian Study Group

A new study group has formed in Norway to examine the parcel stamps issued by railway, steamship, and bus companies. The group will focus on those stamps issued by Denmark, Norway, and Great Britain. Dues for

members outside of Europe are 100 Nkr (approximately \$16). Details on the study group can be obtained from G. Sor-Reime, Solandsbakken 71A, 4025 Stavanger, Norway.

David Feldman, the international auction house based in Geneva, recorded the highest price ever paid for a Swedish cover earlier this year with the sale of an 1857 cover bearing a 3 skilling and a 24 skilling value sent to St. Barthelemy. Sale price was 460,000 SFr. Feldman plans a 7-day auction at the beginning of November which will include a specialized collection of Norway, a large gold medal collection of Denmark, and classic issues of Sweden and Finland. To obtain a catalog, write to David Feldman SA, P.O. Box 81, 1213 Onex, Geneva, Switzerland.

Catalogs

At an SCC meeting held during World Columbian Stamp Expo in Chicago in May, Gunnar Joos mentioned that the next edition of the *FACIT* postal history catalog would contain a section with railway post office markings. Also the Sweden in color version of *FACIT* would contain sections on the local issues and booklets. Kari Rahiala of Finland announced that NORDIA 93 will be held in Helsinki and that information can be obtained from Roger Quinby or Mike Hvidonov. Exhibitors must be a member of a club in one of the Scandinavian countries, and obtain a prospectus from the commissioner of that country. Also, NORDIA 93 will not have a literature category. Literature competitions will be held every two years at the NORDIA shows.

During World Columbian Stamp Expo, a special reception at the Hyatt Regency O'Hare Hotel was held for the

famous engraver Czeslaw Slania. He obligingly autographed souvenir items. Signed copies of some of his engravings were available for \$200 each. The reception was sponsored by Stamp Venturers, the contract printing firm.

* S * C * C *

**SCC Meetings at
APS STaMp sHOW
Show in Oakland, California
August 27-30**

Why not vacation during the

weekend of August 27-30, 1992 attending the SCC activities that will be held in conjunction with the APS STaMp sHOW in Oakland, CA? Under the auspices of Golden Gate Chapter 21 there will be an SCC dinner the evening of Friday, August 28 and SCC meeting and program on Saturday, August 29 at noon. A seminar will be presented by dealer Jay Smith on Saturday at 11; a Scandinavian Identification Clinic. By the way, President Roger Schnell is on the jury to select this year's "Champion of Champions."

* S * C * C *

Wanted! Regional Membership Representatives

How can you resist? Yes, your Executive Secretary is seeking volunteers to serve SCC as membership ambassadors, recruiting new members and helping to retain our current membership. The job is simple, but requires a certain amount of dedication and perseverance. Here are the tasks:

*When a new member joins SCC, assign them a "Buddy" — A current member who lives nearby who can help them feel more a part of the SCC organization.

*Visit local Stamp Shows, SCC Chapters, and stamp shops, spreading the SCC gospel to all who will listen!

*Be a local source for SCC literature and membership information.

*Assist with the formation of new SCC Chapters in your area when the opportunity presents itself.

*Help find lost or misplaced SCC members, who forget to pay their dues or fail to notify the Home Office when they move.

Right now we have Bob Fashingbauer who will help in the Greater Chicago Region, Howard Schloss in the MD/DC/VA Area, Bill Lamkin in the Southeast, and Paul Carlton in the Greater Boston Area. Thanks, guys! Hopefully we can get someone in the Pacific Northwest, Texas, Florida, NoCal and SoCal, too. There are several other regions also, particularly centered around our Chapters, that could benefit from a Regional Membership Rep. So why not give it a whirl! Drop me a note at P.O. Box 125, Newark, DE 19715-0125. Thanks!!

* S * C * C *

Scandinavian Special Auctions

Please ask for our free, illustrated catalogues, always containing single items, collections, postal history, covers and a lot more. Only top quality and very low start-prices.

P.O. Box 2586
Korsørgade 18
DK-2100 Copenhagen
Denmark

INTERPHIL

Tel. 011 45 35 430783

Three New SCC Member Services Inaugurated

Three new SCC Member Services: Exhibit, Computer and Chapter have been approved by the SCC Board of Directors. Their overall mission statement, personnel and organization are summarized below. Each Member Service will have a news section in the "club portion" of the *Posthorn*.

Overall Mission Statement of Member Services

One basic goal of the three SCC Member Services is to provide SCC members with information and advice about exhibiting, use of computers in philately and local chapter operations. A second goal is to maximize the enjoyment, challenge and rewards that SCC members obtain from Scandinavian philately. Printed information, packages of publications and articles detailing exhibiting, use of computers, and chapter services, as well as sample computer data files, will be available at cost to SCC members. The three Member Services will sponsor and arrange for the writing of relevant *Posthorn* articles. Direct individual help and advice for SCC members will be available from the following Member Service personnel:

Service Coordinator

Exhibit Coordinator: Dr. Jeffrey Crown

Computer Coordinator: Paul W. Helgesen

Chapter Coordinator: Reino Merikallio

Assisting Service Personnel

Computer Editor - R. Merikallio

Chapter News Editor - R. Merikallio

Dr. Jeffrey Crown, the Exhibit Coordinator, is an active member who recently won his first major gold medal for his Faeroes exhibit at the Philatelic Show '92 in Boxborough, MA. He is President of Washington SCC Chapter 12. By education at Texas A&M a veterinarian, Dr. Crown is currently involved in data processing with a speciality in document imaging at RJO Enterprises in Lanham, MD. He has collected stamps since five, Faeroes since 1980. Jeffrey lives in Gaithersburg, MD with his wife, Kathryn. He has two daughters and a six year old granddaughter who collects Disney stamps.

Paul Helgesen, the Computer Coordinator, is an SCC Life Member. Paul is a retired attorney who got bit by the computer bug to such an extent that he purchased his own computer store in Fairfield, CT so that he could have computers to play with. His store sells hardware and software for a variety of computers, including IBM PC and compatibles, Macintosh, Amiga, Commodore and Atari. Paul will be assisted by *The Posthorn* Computer Editor Reino Merikallio. Paul's collecting interest is Denmark. Paul lives in White Plains, NY with his wife, Bobbi.

In addition to his other duties, Reino Merikallio has been appointed Computer Editor of *The Posthorn*. In 1988, after 29 years with IBM, he accepted an early retirement offer that he couldn't refuse. At IBM he was involved in product planning and in application programming with most of the major programming languages. Since leaving IBM Ray has been co-owner of an advertising agency and graphic design firm in Stamford, CT which uses Macintosh computers. Ray's collecting interests are stamps in all their varieties, primarily F and VF used, of all Scandinavian countries, with a major emphasis on Finland's stamps. He lives in New Canaan, CT with his wife, Pat.

Ray will handle the two interrelated functions of *Posthorn* Chapter Editor and Chapter Coordinator.

* S * C * C *

THE POSTHORN has received a letter from a collector in Eesti asking to correspond with collectors in the U.S. So, with the usual word of caution to set ground rules before beginning any trades or transactions, he is: Margus Praks, Yarue 7-2, EE-0013 Tallinn, Estonia. Good Luck!

The Scandinavian Collectors Club

—*Founded, Nov. 25, 1935*—

Elected Officers

- PRESIDENT: Dr. Roger G. Schnell, 4800 N.E. 20th Terrace, Ft. Lauderdale, FL 33308
 VICE PRESIDENT: (Post open for nomination & confirmation by SCC Directors)
 SECRETARY: Raymond Erickson, 5427 Delia Way, Livermore, CA 94550
 TREASURER: Jared H. Richter, 1353 Plum St., San Diego, CA 92106-2549
 DIRECTORS-AT-LARGE: Chris McGregor, 6312 Camarvon St., Vancouver, BC Canada V6N 1K3
 Ronald B. Collin, P.O. Box 63, River Grove, IL 60171
 Eric Roberts, P.O. Box 460201 Galleria Sta., Houston, TX 77056
 IMMEDIATE PAST PRES.: Jared H. Richter, 1353 Plum St., San Diego, CA 92106-2549

Appointed Officers

- EXECUTIVE SECRETARY: Robert W. Lang, P.O. Box 125, Newark, DE 19715-0125
 HISTORIAN: Dr. Frank N. Schubert, 8505 Cherry Valley Ln, Alexandria, VA 22309
 LIBRARIAN: Dr. W. E. Melberg, Box 134, Allenton, WI 53002
 STAMP MART MANAGER: Eric Roberts, P.O. Box 460201 Galleria Sta., Houston, TX 77056
 APS REPRESENTATIVE: Jared H. Richter, 1353 Plum St., San Diego, CA 92106-2549
 PUBLICITY CHAIRMAN: Marvin D. Hunewell, P.O. Box 23959, St. Louis, MO 63119
 BY-LAWS CHAIRMAN: Chris McGregor, 6312 Camarvon St., Vancouver, BC Canada V6N 1K3
 AWARDS CHAIRMAN: Ron Collin, PO Box 63, River Grove, IL 60171
 LITERATURE PROMOTION: Alan Warren, P.O. Box 17124, Philadelphia, PA 19105

Member Services Coordinators

- CHAPTER COORDINATOR: Reino Merikallio, 388 West Road, New Canaan, CT 06840
 EXHIBITION COORDINATOR: Jeffrey N. Crown, 850 Flagler, Dr., Gaithersburg, MD 20878-1946
 COMPUTER COORDIN.: Paul Helgesen, 34 Plymouth Road, White Plains, NY 10603-1129

Staff, *The Posthorn*

- POSTHORN EDITOR: John Lindholm, 2316 Lakeview Dr., Fergus Falls, MN 56537
 BUSINESS MANAGER: J.R. "Jack" Day, 2109 Skycrest Drive #4, Walnut Creek, CA 94595
 EDITOR EMERITUS: Gene Lesney

Nation Editors & Resident Associate Editors

- POSTHORN COLUMNIST: Alan Warren, P.O. Box 17124, Phila., PA 19105
 CHAPTER NEWS: Reino Merikallio, 388 West Road, New Canaan, CT 06840
 D.W.I. EDITOR: Dr. Roger G. Schnell, 4800 N.E. 20th Terrace, Ft. Lauderdale, FL 33308
 DENMARK & FAROES
 & GREENLAND EDITOR: Dr. Dan Laursen, 4901 East Eastland, Tucson, AZ 85711
 FINLAND EDITOR: Mike E. Hvidonov, 4 Dwight Lane, Great Neck, L.I., NY 11024
 ICELAND EDITOR: Bryan R.R. Whipple, 3093 Jaylee Dr., Santa Rosa, CA 95404
 RESIDENT ASSOC.: Sigurdur H. Thorsteinson, Alfaskeid 4, 220-Hafnarfjordur, Iceland
 NORWAY EDITOR: Jeffrey O. Curtis, 812 Celeste Drive, Toledo, OH 43612
 SWEDEN EDITOR: Paul A. Bergman, 875 Kenzoa St., Haverhill, MA 01830
 FORGERY EDITOR: Erik Paaskesen, Sneppenlaan 33, 1980-Tervuren, Belgium

SCC Study Groups

- DWI STUDY UNIT: Dr. Roger G. Schnell, Chairman (see address above)
 REVENUES: Tim McRee, Box 388, Claremont, NC 28610



President's Message

By Dr. Roger G. Schnell, MD

The COLOMBIAN EXPO 92 is now history, and it was a smashing success. 'Bravo - Bravo' SCC Chapter Four - Chicago. With almost 100 SCC members in attendance at the show, our host committee made everyone feel at home. The one frame exhibits run by Dr. Melberg had over 30 entries, with a wide spectrum of subjects and material. The Chapter 4 dinner and auction early in the week was well attended and the SCC banquet on Friday had over 60 in attendance. Those who participated in the "tutorial walk through" of Scandinavian exhibits learned a lot from the "experts." The SCC general meeting had as its highlight the superb talk on "Finland" given by Christian Sundman. During the week we had the opportunity to meet and discuss Scandinavian Philately with a variety of experts including long time friend Franz Moldenhauer whose exhibit "Norway" was in the International Court of Honor. I particularly enjoyed the opportunity to meet many members, who up to this time had only been a "name on paper." It certainly will make future correspondence more meaningful. I would especially like to thank the members of the Board, some who came from long distances to participate in our meetings and deliberations. The members will see the results of these actions in the ensuing months, as new initiatives and programs are developed. In the exhibition competition our members again excelled, and the Scandinavians took home most of the "BACON." Mike Hvidonov won the GRAND AWARD for his exhibit of FINLAND and Butch Arnould won the RESERVE GRAND AWARD for DWI Postal History. The competition was fierce as there were 20 GOLD awards and 22 VERMEIL awards. Congratulations to all who exhibited and gave us all the opportunity to see great material. Anyone who "looked" could not help but learn. I would like to offer a special thanks to Fred Bloedow, our "point man" for Chicago.

Who to Contact?

To become a member of SCC contact Executive Secretary	
To pay dues	
To change address	
To place ads, make payments or rate inquiries	Business Manager
To submit articles or ideas	
General articles	Editor, <i>The Posthorn</i>
Individual country articles	Nation Editors
To form a new chapter	Chapter Coordinator
To inquire or obtain help for exhibiting, using computers, or meeting chapter needs	Appropriate Member Services Coordinator

There were many days when Fred single-handedly manned the SCC booth. He was salesman, tour director, "arranger extraordinary." 'Bravo - Bravo' Fred for a job well done.

After almost 25 years of running the Stamp Mart, Wade Berry has resigned. Eric Roberts, P.O. Box 460201 Galleria Sta., Houston, TX 77056 has agreed to take over the job. He has some innovative ideas which he will be presenting in the future that will help both the seller and buyer.

STAMPSHOW 92 - Oakland. See you all there. We will be having a regional SCC meeting in conjunction with the show. For further information contact Raymond Erickson, 5427 Delia Way, Livermore, CA 94550.

* S * C * C *



News from the Home Office

By Bob Lang

It has certainly been an exciting three months for SCC since I last wrote this column. Several new initiatives have been undertaken and new member signups have more than doubled during the quarter; plus an extra effort to contact "tardy" dues payers means our "drop list" is at an all-time low. A look at the membership report that follows shows that we are not as healthy as we once were, but that the downward slide in membership has reached a low point and the trend is now definitely upward. So let's keep the advance going! Prexy Roger Schnell has set a goal of 1200 total SCC membership by the end of 1993 and we need your help to attain that goal.

Included in this *Posthorn* issue is a **New SCC Membership Application Form**. It is meant to be **USED**, not laid aside or trashed. **Sign up a new member! DO IT TODAY!** You'll be glad you did. And perhaps, if enough of us do it, you can get a Chapter started or rejuvenated in your area. For help in setting up a chapter, drop a note to Ray Merikallio.

I attended the World Columbian Show in Chicago and was treated royally by our Chapter #4 friends. I also met a whole host of people from across SCC Land. Through the efforts primarily of Fred Bloodow, "Doc" Melberg, Wally Gaarsoe, Norm Andrews, Harv Gudmundson, Bob Fashingbauer and several others we signed up 13 new members and made several contacts that may yield many more in the future. A total of 90 SCCers signed in at Booth S-19 that week and it was great to meet first-hand so many people who previously were only names to me. Space does not permit me to mention them all here.

ICELAND, THE FAROES AND GREENLAND

A price list featuring many inexpensive offers
will be sent free of charge



STAMP CENTER
P.O. Box 78, IS-121 Reykjavik, Iceland



My travels also took me to Boston where I spent two days with Wayne Rindone and Paul Carlson of Chapter #5. The New England Chapter is alive and well!

Three other items need mention here. 1.) The Board voted to incorporate the cost of "Airmail" delivery into the dues for all members with Non-North American addresses starting in 1993. This means that dues for our SCC members across the pond will be \$21 US, instead of the previous \$15. 2.) For those of you who do not have, or have a battered SCC plastic membership card, you can get a new one by dropping me a line at P.O. Box 125, Newark, DE 19715-0125. Please include \$1.00 and an SASE to help cover our costs. 3.) I am seeking some assistants in our ever expanding membership recruitment and retention efforts. If you qualify and are willing to help out, please answer the "Help Wanted" ad found elsewhere in this issue. I already have several volunteers, but would like to add eight to ten more. Thanks in advance.

I am also appreciative of all the help and support I am getting, particularly from Bill Lamkin, the Officers and Board, in coping with this new assignment. It takes lots of time and patience and I'm giving it my best. If you've written and not received a reply, please bear with me, I will get back to you when time permits.

Remember that our hobby needs "evangelists." So get out and talk up Philately! Take along a membership application and sign up a new member. Till next time I am here to serve you and the SCC.

* S * C * C *

Editor's Notebook

By John Lindholm

Gene Lesney has helped me greatly in preparing to edit the *Posthorn*. I wish to thank him.

There are so many things I need to write in this column it is hard to know where to start. Let me just say that this issue is dominated by "club news" and so forth as well as the traditional great article by Mike Hvidonov. Partly this is because this is a 40 page issue (to compensate for the extra pages in the May issue). In the future there will be more philatelic writing and more variety. We'll have a piece by Harry Snarvold on Norwegian postal history and one on Danish sled post by Paul Oberlin as well as many others. In future columns I will address the recurring nightmare of typos.

An editor's primary responsibility is publishing content his or her readership is interested in. If I am to do that I must hear from you. Please write me at my **new address, different from the address in the May issue:**

John Lindholm
2316 Lakeview Drive
Fergus Falls, MN 56537

* S * C * C *

**1993 will be the 50th anniversary
of the *Posthorn* —
Let the editor know how to celebrate!**



Library News

Dr. W. E. Melberg, SCC Librarian

This column is written as World Columbian Stamp Expo '92 becomes old news. Many good things concerning the SCC Library took place there, especially with the acquisition of new books. First and foremost was the addition of 10 publications from Norway. Franz Moldenhauer, who represents the *Filatelistisk Forlag* of Norway, graciously presented these books at a greatly reduced rate and saved us the postal costs by using his luggage space. The Dr. Earl Jacobsen Fund came through again with a complete donation of the costs involved in this purchase. The Danske Filatelisters Forbund furnished us with a complimentary copy of their great book, *The Classic Stamps of Denmark*. This publication is available from their organization. Write me for the ordering details. Tremendous colored pictures of many of the philatelic treasures of Denmark are presented: it should be on every Danish collector's bookshelf. Florence and I had the pleasure of having Glenn Hansen, Ole Hellsten and two guests from Canada as overnight "lodgers" on their way to the Chicago show. We enjoyed their company and the opportunity of showing them the SCC Library, our new home and some of our philatelic holdings. At the close of the Show, Anneli and Mike Hvidonov along with Christian Sundman honored us with a visit. We tried to show them how Midwesterners enjoy life. I think we succeeded. A great time was had by all!!!



Already Rare Swedish New Issues Are:



1990 "Valentine Stamp"	mint \$25.
On-cover postmarked	\$35
1991 "Thank You Stamp" \$2.50 face value	\$22
On-cover, used	\$35

Also, all other Facit-catalogued, postally sanctioned, special purpose stamps from Sweden, Norway and Finland are available at correct wholesale prices + 20% for retail orders. Offer practically every rare Scandinavian stamp with full money-back guarantee.

Try us by sending your want list for photocopy offers? Or, send for our 1992, 130-page illustrated wholesale price catalogue, add \$10 in cash for postage and handling.

Rolf Gummesson AB,
Kungsgatan 55
111 22 Stockholm, Sweden



Since 1947

Library Donations — March 12, 1992 to June 15, 1992

Cash: Gary Friggens, Stephen Hake, Neal Jardine, Paul Nelson, Gayland Ricklefs, Robert Wiley

Publications:

Chicago Chapter 4

World Columbian Stamp Expo '92 — SCC One-Framed Exhibits. Photocopies of thirty-eight exhibits of 16 pages each by SCC members. List of titles will be sent on request.

Jeffrey Curtis

"*At Betale' Lösenmärke*." Jeffrey Curtis, 1992. Personal research comments. 3pp. (English)

Danske Filatelisters Fællesfond

The Classic Stamps of Denmark. 1992. 160pp. Outstanding book produced by the *Danske Filatelisters Fællesfond*. Color reproductions of the top items of Danish philately. Gift of the *DFF*.

John Dasher

McKay's Modern Dictionary. English/Swedish & Swedish/English. Several Authors. 220pp.

DWI Reprints (of original sheets). KPK. 1, 3, 4, 5 & 10 cent Bicolors.

Danish Royal Emblem Study Papers. A. Birch. AP. 1950's. Many illustrations.

"*Local Postage Issues of Greenland*." W. Rowcroft. SPA. 1954. 2pp. Lists and catalogs the Greenland Local issues.

Plating Norway Number 1. H. L. Lindquist. 1945. 8pp. Doublesized reproductions of Norway one, shows plate positions, flaws. Four plates.

Facit Förlags AB

Facit - Sverige 1992. 132pp. The latest Facit catalog featuring Swedish stamps. Includes a section on Swedish locals and an evaluation of all Swedish booklets. In full color. (Swedish & English)

FG Nordische Staaten E.V.

Island - Handbuch - Skilling und Aurar-Marken im Oval. K. Bliese. 1991. 136pp. A detailed study of the Icelandic Skilling and Aurar Oval stamps.

Glenn Hansen

Linn's World Stamp Almanac - Fifth Edition. 1989. 994pp.

Erik Hemmingsen

Many volumes of a Danish philatelic journal, *Frimærkesamleren*, some dating back to 1949.

Dr. Earl Jacobsen Fund

Håndbok Over Norges Frimerker. Bind III. Antika Utgavene 1897-1910. Central Printing Office. F. C. Moldenhauer, Editor, 1992. 252pp. Production figures of Posthorn with illustrations of varieties.

Specialized Scandinavia

We're into our third decade of helping to build collections through our monthly lists of Scandinavian specialty material: covers, booklets, locals, stationery, seals, literature . . . and even stamps.

So if you're looking for such things as Kenttapani covers, "FERIE" overprints, the Porkere mute cancel on cover, Gentofte Grølandskomité seals, Adams Expres items, Goteborg stationery, or Åland special postmarks, we could be your source.

In other words, if you haven't been hearing from us recently, let us hear from you. You'll really enjoy our lists (we're told they make interesting reading) and perhaps will find some things you need . . . at pleasingly reasonable prices.

Lizabeth Stamp Company

P.O. Box 321

Bloomsburg, PA 17815

Håndbok Over Norges Frimerker. Bind I. Trykningforløp og Forbunk av Papir og Kartong. Frimerker-Portomarker-Helsker 1895-1908. Central Printing Office. F. C. Moldenhauer, Editor, 1991. 252pp. Production figures of Stamps, Postage Dues and Stationery.

Sjø-Postruiter På Utlandet - Historie og Stempler. P. Danielsen. 1991. 90pp. Postal history and cancels concerning ship mail from Norway.

Statens Postdampere I Rute På Thronhjelm 1838-1865. T. Gjelsvik. 1987. 42pp. History of the various Norwegian steamships that carried mail.

Skip og Post I Østfinmarkstruten 1853-1868. T. Gjelsvik. 1984. 13pp. History of early shipletters to and from the east Finmark routes.

Håndbok Over Stempler og Påskriter Fra Post Med Skip I Lokale Ruter I Trøndelag. T. Gjelsvik. 1991. 56pp. Lists cancels and manuscript markings on mailships in Norway.

Dampskipet Prinds Gustav - og Postgangen Til Nord-Norge For 150 År Siden. G. Melboe. 1988. 120pp. Postal history of the Post ship "Prinds Gustav" and its journeys to northern Norway.

Norsk Misjonpost I Madagaskars Innland 1867-1897. K. Sanne. 1989. 80pp. Postal history of the Norwegian presence in Madagascar.

Norske Brev før 1855. I. Sundsbø. 1989. 142pp. Postal history of Norwegian letters before 1855.

Wilbur Jonsson

Danmarks og Dansk Westindiens Frimærker (Bind 4). G.A. Hagemann. 1951. 190pp. This book should be researched with DEN B 5, 8 and 9. (Danish).

Sveriges Katalogen. SFF. (Swedish)

Faroes Islands 1979. W. Wern. (English)

Katalog över Lokalfrimärker. O. Sandberg. (Swedish)

Catalogue of The Postage Stamps of Norway. R. King-Farlow. (English)

George Koplowitz

Prisliste Over Danske Fireblokke. 1975. AFA. 20pp. Pricelist of blocks of four of Denmark. (Danish)

Katalog Over Norges Helpost 1872-1972. T. Soot-Ryen. 1972. 80pp. Thorough coverage on Norway's postal stationery. (Norwegian)

50th Jubilee. Swedish Postal Administration. 1970. 36pp. Information about the Post Office Stamp Printing Works. (English)

Nordia 80 - Bulletin. Malmö, Sweden. 36pp. Handbook with many articles. (Swedish)

Robert Lang

Scandinavian Auction Catalogs (older ones) and miscellaneous publications.

Tom Plovst

HOFI '92. 112pp. Catalog of the 80th anniversary show of the Horsens Filatelistklub. Good article by the JKE Group on Horsens postmarks.

Postiljonen AB

A Picture of the Stamp Trade. Postiljonen AB. 1992. 6pp. A clever promotional brochure featuring 6 post cards.

Dr. Roger Schnell

Frimærke-Katalog - 1851-1980. Nordfyns Frimærkenhandel. 1979. 64pp. Covers Denmark, DWI, Faroes, Greenland & Danish Christmas seals. (Danish)

AFA Skandinavien Frimærkekatalog 1977. 272pp. (Danish)

Nordia '92. Bulletin 1 & 2. 24pp, each. (Norwegian)

Harry Snarvold

Norwegian Letters to Foreign Destinations 1855-1875. Harry Snarvold. 1991. 345pp. Second edition of this outstanding book. Does not have as many color pictures of the covers as the original publication. Much postal history information. Appendix illustrates various postal markings from many countries that are found on the covers. Worth a look for any philatelist. See review in PH 11/91.

Postal Covers

ESTABLISHED 1972

MAIL BID SALES * * COVERS OF THE WORLD

19th & 20th Century Postal History — Topical & Thematic including Military — Maritime — Railroad — Air Mail — FDC's — Cinderella — Red Cross — Judaica — Expositions — Sports and Olympics — Postal Stationery — Picture Postcards and so much more!

ALSO: Listing of over 200 US & Foreign Catalogs and Handbooks many at DISCOUNT PRICES, including hard to get imports.

FOR RICHLY ILLUSTRATED CATALOG SEND \$1.00 to:

THEO VAN DAM — P.O. Box 8809 — Anaheim, CA 92812

Gerald Strauss

Swedish Local Postage Stamps. R. Lister. 1952. 24pp. A list of locals issued from 1941 to 1947. (English)

Christian Sundman

Finlandia 88. Complete show catalog in a bound volume. 700pp.

Forwarding Agents. D. Dromberg. 108pp. Manuscript markings and handstamps on letters from foreign countries to Finland. An English summary is included.

Nordia 1993. Bulletin 1. 40pp. This Nordic show is to be held in Helsinki in May 1993.

Suomen Filatelistiliitto

Suomen Postileimojen Käsikirja. S. Arvelin & J. Olamo. 109pp. Listing of Finnish postmarks. Illustrated with periods of usage. With Finnish, Swedish and English summaries.

H. M. Thomason

Harmer Auction Catalog - 1972. 80pp. Section of specialized Scandinavia. Includes Prices-realized list. (English)

Alan Warren

En Dag Med Vitus Bering. A. Kabell, 1980. 23pp. A study of the various First Day Covers of the issue of 1941. (Danish)

Stamps and Postal History - Norway - Konsortium 1. David Feldman Auction Catalog. June 1992. 80pp. Loaded with color illustrations of covers and stamps. (English)

Purchases:

Norge Skillingsmerker og Brev 1855-1879. F. Aune. 1990. 80pp. Beautiful book with illustrations of covers and stamps from the skilling period. (Norwegian & English).

P&T's Historie. 1711-1850. Anders Møller. 1992. 412 pp. Postal history of Denmark from 1711 to 1850 with special emphasis on postal routes, mailcoaches and footpost. (Danish).

Updating to the Danish Perfin Catalog. 1991. Contains a revised pricelist. (Danish).

Kenttäposti 1941-1945. P. Kopsa. 1991. 300pp. This publication illustrates the system of the fieldpost in Finland during the period of 1941-1945. The material is based on war and postal history. It includes the location of the army post offices. (Finnish).

* S * C * C *



Chapter News

By Reino Merikallio

This is my second *Posthorn* issue of editing news from the SCC chapters. Being Chapter News Editor is evolving into a pleasant periodic job. As a result of all the chapter news gathered for the May issue the idea of a new Chapter Services function evolved. I was subsequently appointed Chapter Coordinator.

Having sensed that the above two SCC positions would level out into smaller amounts of work I volunteered for the new position of *Posthorn* Computer editor. This is a labor of love, having worked for IBM for 29 years until retirement in 1988, including the last 10 years on personal computers.

Basic SCC Chapter Activities

All of the SCC chapters engage in the following rewarding SCC chapter activities: sharing philatelic information, purchasing stamps and covers from SCC Mart books, buying, selling and trading materials, hearing talks by chapter members or by visiting speakers, watching slide shows and examining copies of award winning exhibits. If you don't belong to an SCC chapter please consider joining one in your area or forming a new chapter with other nearby Scandinavian collectors. For contact people in each chapter see May issue.

Seattle Chapter 1 News

Seattle Chapter 1 engages in the basic SCC chapter activities described above.

—Arnold Knudson

Detroit Chapter 3 News

Detroit Chapter 3 meets twice a month in conjunction with meetings of the larger and more general Ferndale Stamp Club, thereby sharing the rental costs of the Ferndale Community Center. The chapter engages in the basic SCC chapter activities described above.

—Petter Poppe

Chicago Chapter 4 News

Slide programs from the SCC Library were highlighted at the March and April meetings of Chapter 4. The first two parts of Einar Lindstrom's fabulous Norwegian collection were presented and met with great enthusiasm. This is one of the all time top exhibits. Try this slide show for a fun evening.

The *World Columbian Stamp Expo '92* on May 23-31 was the main event for the month of May! The COMPEX show, in which Chapter 4 participates annually, ran concurrently. The Ron & Norm Show was presented on the first Sunday with about 25 people attending this ever popular event. On Thursday, 37 members and guests met at the Golden Flame for the monthly dinner meeting, including an auction and numerous out of town SCCers. Norm Andrews, with his unique style, managed to sell some items to unsuspecting bidders, adding to chapter 4's coffers. A fun evening!

The SCC banquet, on Friday evening, was a huge success with 67 attending. Excellent food and drink along with great camaraderie. Christian Sundman's slide show and talk Saturday afternoon was the star Scandinavian event of the SCC Annual Meeting. He showed photos of items in his collection that usually are only seen in postal museums. It must surely have pleased him that over 50 attended and enjoyed his presentation.

—Dr. W. E. Melberg

New England Chapter 5 News

Chapter 5 sponsored an SCC Regional Meeting on May 2 during PhilaShow '92 at Boxborough, MA. Tom Bergendahl of this chapter presented a slide show "Stamps of Norway." The April Show-and-Tell was presented by Paul Carlton who showed a selection of covers on Swedish Flag Day including two First Day covers and complete sheets of the 10 and 15 öre values.

In May Jim Gaudet showed essays, proofs and reprints of early Danish issues. Highlights included trial color proofs and tete beche pairs of the Royal Emblem issues; 1885 reprints complete; and essays of 1930's issues. In June the chapter held its annual dinner meeting at a local Chinese restaurant. A Show-and-Tell by Ingolf Melberg took the club "lion hunting" by showing various plate flaws in the heraldic lions of the Wavy Line issues. There will be no Show-and-Tells during July and August.

—Lee Coldwell

New York Chapter 7 News

New York Chapter 7 continues to meet each month at the world famous Collectors Club in Manhattan and engages in the basic SCC chapter activities described above.

—Reino Merikallio

Northern New Jersey Chapter 9 News

Northern New Jersey Chapter 9 continues to meet in members' homes and engages in the basic SCC activities described above.

—Warren Grosjean

Washington DC Chapter 12 News

Washington Chapter 12 continues its rejuvenation with five new members boosting overall membership to 30. The Summer meeting was held in early June at the National Philatelic Exhibition (NAPEX) in Arlington, VA. A feature was Dr. W. E. Melberg's slide show "What to Collect in Scandinavia When You Have Run Out of

Things to Collect." The next Chapter 12 meeting will be at BALPEX in Baltimore in early September. The first issue of a chapter newsletter will appear in September.

—Dr. Jeffrey Crown

Delaware Chapter 13 News

At the May meeting Whitey Bro spoke on "The Danes Discovered America - Finally." He discussed the immigration of Danes to America in the 1880's, including their use of the mails. On June 23 the 25th annual auction was held. There were 15 floor bidders and 40 mail bidders for a record 394 lots. The July meeting was the by now traditional pool party and picnic (in its fourth year) at a member's home.

—Robert Lipscomb

Twin Cities Chapter 14 News

Chapter 14 continues its own version of Show-and-Tell. Each meeting has Show-and-Tell for one of the Scandinavian countries on a rotating basis. The rotating countries include DWI, Greenland and "Miscellaneous" which consists of Åland, Aunus, Faroes, Karelia, North Ingermanland and Schlesvig. The Spring countries were Finland in April and Iceland in May. The June meeting had reports on the Columbian Stamp Expo in Chicago from members who attended. This was followed by a slide show on the Pony Express. This slide show happened to be available and offered a change of pace from the usual Scandinavian Show-and-Tell. Chapter 14 recently donated \$200 to the Minnesota Federation of Stamp Clubs for the purchase of exhibit frames which were used at WCSE.

—Ross Olson

Rochester Chapter 15 News

The chapter continues meeting each month at Bob Gustafson's home where it engages in the basic SCC chapter activities described above.

—Robert Gustafson

Southern California Chapter 17 News

Lars Hellberg spoke on the publicity cards of the various Scandinavian postal authorities. The Scandinavian Philatelic Library of Southern California (SPLSC) has at last settled down in the home of Steve Hake. Stephen can be contacted at the chapter P.O. Box 741639, Los Angeles, CA 90004.

—Paul Nelson

Golden Gate Chapter 21 News

The chapter meets periodically on Saturdays at major stamp shows. The first spring meeting was held on March 21 in San Jose at Filatelica Fiesta sponsored by the San Jose Stamp Club. Jerry Moore showed a number of prize winning exhibits from the SCC library of all Scandinavian countries so that chapter members could see how the experts do it. Bill Anderson showed color varieties of Denmark stamps. The chapter subsequently met on May 1 at WESTPEX in San Francisco, and COALPEX on May 23 in Walnut Valley.

The obvious next major show is STAMPSHOW in Oakland during August 27-30. A full description of the chapter's plans for STAMPSHOW will be found elsewhere in this *Posthorn* issue. The Fall chapter meeting will be in early November at SUNPEX in Sunnyvale, CA.

—Thomas Olson

Houston Chapter 22 News

The formerly inactive Houston Chapter 22 is gathering its forces to resume monthly Sunday meetings in September. The chapter will engage in the basic SCC chapter activities.

—Mary Jane Menzel

Tampa Chapter 23 News

The May meeting featured the chapter's "Founding Father," Bob Paulson, who returned on vacation to give a presentation on "After Your Album is Full What to Do With That Country." The chapter's annual auction, conducted by Treasurer

Ernie Smedegaard, was held at the June meeting. The meeting schedule for the balance of the year is:

July — Game Night with a "Scandinavian Trivia Contest" with prizes

August — Judging of youth exhibits by a group of young people who were challenged at the February meeting

September — Winners of the youth exhibits will be invited as guests to receive awards. Each member will make up a short exhibit on their "Favorite Stamp."

October — Dr. W. E. Melberg's slide show "Philatelic Oddities of Denmark"

The chapter has adopted another chapter's handling of Show-and-Tell by devoting 10-15 minutes to it between the business portion and formal program.

—Charles Seaman

Winnipeg Chapter 24 News

The chapter continues to meet monthly on the 2nd and 4th Wednesdays, September through May, at the Scandinavian Cultural Centre. The Centre offers meeting rooms, licensed premises, a small snack bar with a Scandinavian menu and a melding of the cultures of Denmark, Finland, Iceland, Norway and Sweden.

—Glenn Hansen

* S * C * C *

Membership Report

New Members for June 30, 1992

- | | | |
|------|---|-------------------|
| 3384 | MILLER, CHARLES, P.O. Box 220, Conetoe, NC 27819
Scandinavia, US Possessions | By: Lang 1095 |
| 3385 | LUYPAERT, RONNY, Kerkomstraat 18, B-3300 Kuntich, Belgium
Greenland | By: Lamkin 2561 |
| 3386 | ODERVANG, RONNY S., 3910 Winterset Dr., Annandale, VA 22003
Pre-1920 Sweden Used | By: Crown 2949 |
| 3387 | QUEISSER, KLAUS P., P.O. Box 181, Don Mills, Ontario, Canada M3C 2S2
Scandinavia, Greece, Port. Colonies | By: Lang 1095 |
| 3388 | GRIM, VINAL D., P.O. Box 674, Minocqua, WI 54548
Scandinavia, Austria, Switzerland | By: Lang 1095 |
| 3389 | SANTALA, ROGER G., 2244 Fairview Pl., Billings, MT 59102
Scandinavia | By: Lang 1095 |
| 3390 | WALKER, W. DANFORTH, Gen'l. Delivery, Lisbon, MD 21765
Grenada, Indian States, Romanic, etc. | By: Schnell 2816 |
| 3391 | RUTHERFORD, BETTY, 4310 Indian Creek Rd., Marion, IA 52302
Faroe Islands | By: Smith 1824 |
| 3392 | GESSE, FREDERICK E., 906 Dundee Ct., Apt. 205, Bellevue, NE 68005
Sweden, Norway, Denmark, Iceland | By: Bloedow L-24 |
| 3393 | GOLDHAMER, DAVID, 20 Baif Blvd., Unit 1205, Richmond Hill, Ont. Canada L4C 8T1
Greenland | By: Bloedow L-24 |
| 3394 | NORDSTROM, REV. CRAIG A., 2701 Edgewood, Portage, IN 46368
Sweden, Isle of Man, Worldwide | By: Bloedow L-24 |
| 3395 | KRIZ III, JOHN J., 37 Strawberry Hill Rd., New Canaan, CT 06840
Faroes, Greenland, Antarctic | By: Bloedow L-24 |
| 3396 | DALLEY, NIELSEN S., P.O. Box 250036, Franklin, MI 48025
Scandinavia | By: Bloedow L-24 |
| 3397 | SPOERL, STEVE (Address restricted)
Sweden, Greenland, DWI | By: Bloedow L-24 |
| 3398 | FALLS, DENISE, 5528 Merritt Circle, Edina, MN 55436
Scandinavia | By: Hvidonov 1286 |
| 3399 | LARSON, JOHN L., 800 S. Mattis, C4 Champaign, IL 61821
Sweden | By: Bloedow L-24 |

3400	LEVI, RUSSELL, 2931 Winery Ave., Clovis, CA 93612 Iceland, Greenland, Sweden	By: Smith 1824
3401	LONGSTRETH, FRANK H., 198 Aurora St., Hudson, OH 44236 Scandinavia	By: Bloedow L-24
3402	RUNEBORG, ERNEST, 740 River Dr., #17C, St. Paul, MN 55116 Scandinavia, Brit Colonies, Worldwide	By: Bloedow L-24
3403	YOUNG, THERESA L., 1443 Eggleston St., Flint, MI 48532 Scandinavia, Japan, W. Europe	By: Bloedow L-24
3404	ALBIEZ, HENRY O., 1901 Courtney Dr., N. Augusta, SC 29841 Worldwide	By: Lang 1095
3405	CARLSON, GARY M., 3097 Frobisher Ave., Dublin, OH 43017 Scandinavia, Sweden, U.S., Ohio RPO's	By: Lamkin 2561
3406	JENSEN, FINN A., 2628 Woodley Pl., Falls Church, VA 22046 Scandinavia	By: Harris 1513
3407	THORNER, CURT, 2900 Lake Valencia Blvd. East, Palm Harbor, FL 34684 Norway, Sweden, Faroes, DWI	By: Lange 1353
3408	CAVERLY, DANIEL (Address restricted) Sweden, U.S., Canal Zone	By: Birdsall 1326
3409	BROMS, RAYMOND A., P.O. Box 503, Elk Grove, IL 60007 Sweden, Faroes, Airmails (World)	By: Birdsall 1326
3410	GREEN, DR. EDWARD T., 409 Cardinal Dr., Statesboro, GA 30458 Scandinavia	By: Birdsall 1326
3411	WOOLDRIDGE, DR. THOMAS D., 104 Northwood, Tupelo, MS 38801 Iceland, Central America, Chile, etc.	By: Birdsall 1326
3412	RAIKKONEN, JOHN O., 18 Laurel St., Fairhaven, MA 02719 Finland, U.S., Maps	By: Birdsall 1326
3413	BEIN, DAVID/NORDICA, P.O. Box 284, Old Bethpage, NY 11804 Philatelic Agent Danish Kingdom PO's	By: Birdsall 1326
3414	SCHWENK, GEORGE A., 2028 Kings House Rd., Silver Spring, MD 20905 Scandinavia, German States & Col.	By: Lang 1095
3415	BECKER, KARL E., 45 Wordsworth Rd., Short Hills, NJ 07078 Scandinavia, Germany, Latin America	By: Lang 1095

Members Reinstated

2074	FRAAS, L/C G. RICHARD 2224 Stockton Loop, Kirtland, AFB NM 87118
0842	EKLUND, DR. ROLF-BERTIL, Klovervagen 12, 161-36 Bromma, Sweden
1888	PARR, KENNETH E., P.O. Box 1937, Salem, NH 03079
1985	ENGDAHL, DAVID A., 65 Sharon Dr., Rochester, NY 14626

New Life Members

L-82/3338	SUNDFOR-FULSCHER, SANDRA, 83 N. Cowley Rd., Riverside, CA 60546
-----------	---

Deceased Members

3199	KLIMKO, MARTIN C.
------	-------------------

Resigned Members

1952	KARLSON, ERIK P. - Member since 1977
2260	HARFORD, JOYCE G. - Member since 1979
3197	HERMAN, HERBERT S. - Member since 1989
2844	JANSSON, KYLE R. - Member since 1984
3189	CLARK, GEORGE S. - Member since 1988
2546	GUILLORY, B. R. - Member since 1981

Address Changes

1697	HABER, FRED, 11060 180th Ct. S., Boca Raton, FL 33498
2990	SIM JR., ANDREW, 114 S. Elmwood Ave., Palatine, IL 60067
1580	WINTHER, BERTIL (Address restricted)
1338	ARO, KAUKO I, 42 Van Reyper Pl., Belleville, NJ 07109
L-27	DE LAMBERT, BEN, 2150 Park Arroyo Pl., Hayward, CA 94544
2687	KOSKINEN, ARMAND W., 38101 Salem Ave., Zephyrhills, FL 33541
2761	OFJORD, OTTO A., 190 Olmstead Dr. I-2, Titusville, FL 32780
2801	SILVERBERG, STUART O., 23509 Shingle Creek Rd., Golden CO 80401
3107	HOLT, ROBERT E., 26455 170th Ave. S.E., Kent, WA 98042
3353	WESTBY JR, ROBERT A., 10414 Ray Rd., Gaines, MI 48436
1760	TODD, RAYMOND, 4/666 High St. Prahran 3181, Victoria, Australia
1929	DOUGLAS, DR. MARIAN, P.O. Box 546, Calumet, MI 49913-0546
3237	GIBEAULT, DR. ROBERT, 1900 Sommet Trinite, St-Bruno, Que., Canada H3B 1X8

3310 FENESS, ROALD J., #73-7633 Central Saanich, R.R.I. Saanichton, BC Canada V0S 1M0
 L-60 LINDHOLM, JOHN, 2316 Lakewood Dr., Fergus Falls, MN 56537
 3133 SCHIPPER DR. WILLIAM, 73 Waterford Bridge Rd., St. John's Nfld Canada A1B 1E5
 3374 AHLSTEDT, HANS, Box 8, S-570 02 Stockaryd, Sweden

SCC Membership Summary as of June 30, 1992

Total Paid last report			973
Changes	1Q92	2Q92	Total
New Members	+11	+32	+43
New Life	+2	+1	+3
Reinstated	0	+4	+4
Audit Adjustment	0	+5	+5
Regular to Life	-2	-1	-3
Resignations	-8	-6	-14
Deceased	-1	-1	-2
Members Dropped	0	-52	-52
Total Change	+2	-18	-16
Current Total Paid:			957
Honorary			7
Life			64
Regular			881
Subscriptions			5
Total Members			963
Courtesy & Exchange			37
SCC Staff & Library			86
Total PH Copies			1080

Changing Your Address?? NOTIFY
Bob Lang, SCC
P.O. Box 125 — Newark, DE 19715

**DO YOU COLLECT
 SCANDINAVIAN STAMPS
 & POSTAL HISTORY?
 ARE YOU A SPECIALIST?**



WHAT IS A SCHIFF "ESPECIALLY FOR SPECIALISTS"® AUCTION?

It's an auction designed with YOU in mind. Whether you are a buyer or a seller — each specialized area of collectin is listed in a separate section, making it easier for BUYERS to locate lots of particular interest and for SELLERS to realize maximum exposure for their material.



CATALOGS	N. America	Overseas
	Address	Address
1 Year with Prices Realized	10.00	18.00
1 year Catalogs only	7.50	15.00
1 Catalog with realizations	1.50	2.50
1 Catalog Only	1.00	2.00

We invite you to consign individual stamps or covers, entire collections or estates — for unreserved Public Auction or Private Treaty Sale. WE ALSO PURCHASE OUT-RIGHT! Contact us first describing your material include your address and telephone numbers.

Jacques C. Schiff Jr., Inc.



195 MAIN STREET
 RIDGEFIELD PARK, NJ, USA 07660
 Phones (201) 641-5566 — From N.Y.C. 662-2777
 Licensed & Bonded Auctioneers — Established 1947





SCANDINAVIA'S LARGEST AUCTIONS



Contact us today and let us discuss the best possible way of selling your stamps.

If you are interested in buying at our auctions, ask for a free trial copy of the auction catalogue.

POSTILJONEN AB

Box 4118, S-203 12 Malmö, Sweden

Tel 040-72290

Tlx 32602 — Fax 040-72299



THINKING OF SELLING?

We Offer 3 Distinct Alternatives

PUBLIC AUCTION Through public floor auctions, your stamps reach the broadest possible audience in a positive selling environment. The price you realize will be determined by open market bidding, not private negotiation. Our illustrated auction catalogs and broad customer base insure that your stamps are attractively presented to active buyers in the United States and overseas. *Send \$2.00 for Fall '92 auction catalog.*

PRIVATE TREATY Specialized collections, in particular, must be presented in the proper way to other specialists in order to maximize the price realized. You set the price. We then inform selected customers of the property and endeavor to sell it within 90 days.

IMMEDIATE CASH We constantly buy and sell stamps in the normal course of our business and need to acquire collections as well as better stamps and covers from all Scandinavian countries. We provide frank evaluations and IMMEDIATE PAYMENT IN FULL for all acquired material regardless of size.

CALL OR WRITE TODAY if you are considering disposing of all or part of your collection. We can help you decide the best course of action to meet your objectives.

Call Toll Free 1-800-950-0058

in NJ 1-201-746-7982

FAX 1-201-403-2601



NORTHLAND CO.

BOX 34 • VERONA, NJ 07044

Scandinavia Exclusively . . . Since 1975

