

The

POSTHORN

MAY 1993



1992 Silver Horn of Plenty Honors Mike Hvidonov
(See page 51)

Carl E. Pelander Award Goes to Wade Beery *(page 53)*

Journal of the Scandinavian Collectors Club



Scandinavia

- Building fine collections for exhibition, research and enjoyment. Offering approvals from your specific want list or description of your specialized interests.
- Offering complete private treaty services for Scandinavian material.
- Active buyers of complete collections and individual items. High prices paid with immediate cash payment. Avoid the delays and uncertainty of auctions. I have the customers for your good material.
- Providing over 300 titles of philatelic literature and catalogs for the Scandinavian collector.

Call toll-free 1-800-44-STAMP (1-800-447-8267)

Phone: 919-376-9991 Fax: 919-376-6750

The Scandinavian Specialist since 1973

Jay Smith

P.O. Box 650-SCC, Snow Camp, NC 27349

(Formerly of Madison, WI)



The
POSTHORN

Official Publication of the
SCANDINAVIAN COLLECTORS CLUB
Published Quarterly Since 1943
Copyright 1993 Scandinavian Collectors Club

Vol. 50, No. 2

May 1993

Whole No. 195

Table of Contents

The Silver Horn of Plenty, by Mike Hvidonov	Page 51
Letters to the Editor	52
Pelander Award to Wade Beery, by Alan Warren	53
SPF Names Trustee	54
A Unique Item from Sweden, by Lauson H. Stone	55
Copenhagen Machine Cancels, by Dr. Laursen	57
Detecting "Improved" Covers, by Erik Paaskesen	58
Greenland 100 Kroner Stamp, by Dr. Dan Laursen	61
Greenland Postal History, review by Dr. Laursen	62
Nordic Industry on Stamps, by Russell Anderson	63
Color Designations: Sweden, by Frank Baze	65
Norwegian Maximum Cards, by Roe C. Blume	68
National Meeting Announcement	71
Facit Postal History, review by Alan Warren	71
Scandinavian Literature Notes	72
What's Happening in Finland, by Mike Hvidonov	74
Lindbergh Cover Addendum	76
SCC Stamp Popularity Poll for 50th Anniversary	77
1992 Treasurer's Report	81
SCC Chapter 13 Auction	82
Library News, by Willy Melberg	87
SCC Chapters Meeting Times, Contacts	91

Deadline for August Issue: June 15, 1993

Editor: John Lindholm
2316 Lakeview Dr.
Fergus Falls, MN 56537
(218) 739-3260

Executive Secretary: Robert W. Lang
P.O. Box 125, Newark, DE 19715

Business Manager (Advertising):
John R. "Jack" Day, 2109 Skycrest Dr. #4
Walnut Creek, CA 94591

THE POSTHORN (ISSN 0551-6817) is published four times yearly by The Scandinavian Collectors Club. Membership, including subscription, \$15 per year, \$21 for Non North American addresses. Contact Executive Secretary for membership & change of address. Advertising rates & terms available from Business Manager. Second class postage paid at Madrid, Iowa 50156. Copyright 1993 by The Scandinavian Collectors Club.

POSTMASTER: Send Form 3579 to SCC Exec. Secretary, P.O. Box 125, Newark, DE 19715

LARS TORE ERIKSSON



Frimärksauktioner

Box 250, S-391 23 Kalmar, Sweden
Tel: +46-480-15090 Fax: +46-480-15006



INTERNATIONAL STAMP AUCTIONS TWICE EACH YEAR

SPECIALISTS IN SCANDINAVIA

We are one of the best . . .
and we **HAVE** got the know-how!

Contact us today so that we can discuss the optimum
way of selling your stamps.

If you are interested in **BUYING** at our
auctions, please ask for a free catalogue.

We look forward to hearing from you!

LARS TORE ERIKSSON
PO Box 250, S-391 23 Kalmar, Sweden

The Silver Horn of Plenty

By Mike Hvidonov

As a special and thoughtful inspiration, Suomen Postimerkkeily Oy presented an enduring memorabilia gift to the Finnish philatelic world in the form of a magnificent antique Horn crafted by a 19th century artisan, measuring some 18" wide by 12-1/2" in height.

For 10 consecutive years, a silver engraved band will be added to the Horn bearing the name of the philatelist who has contributed unstintingly of his best efforts to promote and/or aid Finnish Philately. The Horn will remain in the custody of the honored selectee for a period of one year and then passed on to the subsequently chosen philatelist. The yearly selections will be decided by the President of the Finnish Philatelic Federation (Jussi Tuori); Suomen Postimerkkeily Oy (Ilppo Ylismaa) and by the honored philatelist of the preceding year, (Kari Rahiala). At the decade's end the HORN will be permanently displayed for all time in the Finnish Postal Museum in Helsinki.

Ilppo Ylismaa of Suomen Postimerkkeily Oy (and company) rate accolades for the creation of this esteemed project. Mr. Ylismaa's organization produces NORMA and many auction offerings which are now tended by his able son Tapio. Since my good friend Ilppo has retired **all their services have improved!!**

The First Winner

The initial presentation of the Silver Horn was bestowed upon Arnold Nyman of Espoo, Finland (now of Helsinki) for his tireless efforts and contributions in the behest of Finnish Philately. Mr. Nyman has unselfishly dedicated knowledge, spark, time and money to clubs and philately for many years. He has earned large gold and major awards in Canada, Norway, France and Finland, etc., incessantly. I

commend the selection of the Federation's Board honoring Arnold Nyman as the first and most deserving recipient cum proprietor of the SILVER HORN for one full year.

1992

Blowing My Own Horn

This heading appears to be the best way to open the final paragraphs of this writing. I am thrilled with the award of the Horn in this, its tenth and final year of 1992.

Regrettably, I was unable to attend the exhibit in Hämeenlinna, at which event the award was presented. I received the 'glad tidings' from Finland on Nov. 1, by telephone, via the dulcet tones of the voice of our World-roving collector of Finland . . . Roger Quinby.

It took me some moments to digest and realize the honor given me. I shall never forget the feeling and am profoundly proud to be a member of this select group of philatelists, all of whom I am certain, still recall the happy memories that I am now personally privy to . . . always. Incidentally, it will be the first time that the Horn will be away from its native land of Finland.

In closing, I am pleased to list the names of all who have shared in the 10 years of honors. Though some of them are no longer with us . . . be assured that their memory remains etched in minds, hearts and the silver bands of 'THE HORN OF PLENTY.'

- 1983 — Arnold Nyman
- 1984 — Carl Krook
- 1985 — Olavi Sahlberg
- 1986 — Christian Sundman
- 1987 — Viljo Karvonen
- 1988 — J. Pertti Hyytiäinen
- 1989 — Juhani Olamo
- 1990 — Seppo Arvelin
- 1991 — Kari Rahiala
- 1992 — Michael E. Hvidonov

Letters to the Editor

WWII Iceland Covers

I was delighted to see the brief article by Mr. Art Hecker, "WWII Iceland Covers Through Box 506, Lisbon," in the February 1993 *Posthorn*.

Regarding figure 1, I doubt very much that it is of British origin: There are too many errors in it that would not have been made by a printer fluent in English! Could this have been printed in Iceland? Does the last line, "Elaft C 306" then make sense?

Also, how is the Italian censor tape explained? Does that mean that the Lisbon mail went via Italy? And is it known what "POSTA ESTERA" means, presumably for Italian censorship?

Many thanks!

Ernst M. Cohn

Enjoying SCC

Just a note to express my thrill in joining the Scandinavian Collectors Club. Already, the SCC has been a source of information and pleasure in my stamp collecting. The *Posthorn* has a wonderful excitement throughout its

pages, so much so that I availed myself of the rare opportunity to purchase over 30 years of back issues, which I am now relishing.

Upon joining SCC, I was immediately referred to the local chapter (New England #5), which I attended as a guest and was royally treated at their March meeting.

What I most appreciate about SCC is the great sense of enjoyment in the hobby, and the hearty disposition of those I have met or whose articles I have read in the *Posthorn*.

Richard Collins St. Clair, SCC #3443
[For more on Dr. St. Clair see our new feature "Pen Pals, Plus . . ." in this issue.]

* S * C * C *

Thanks

Thanks to the generous SCC membership for responding to my Member-to-Member ad for back issues of the *Posthorn*.

—Roger P. Quinby

* S * C * C *

Joint Issues Promote Printing Contracts

Joint issues have been around. They've been good for political relations between nations and tend to foster goodwill among ethnic groups "honored." Ethnic groups love to circulate philatelic covers with mixed frankings of these issues (I have my share of Swedish ones).

Well, Sweden Post has found a major new reason for joint issues. Towards the end of last year Sweden Post went for a joint issue with other Baltic States (Estonia, Latvia, and Lithuania) featuring Baltic birds. It makes sense. Birds don't know political boundaries, preservation of habitat has

to be international, etc. Sweden also had a joint issue with Russia featuring Russian and Swedish icons.

You'll notice that Estonia, Latvia, Lithuania and Russia are all, after the break up of the Soviet Union, fledgeling post offices. For these joint issues, Sweden Post printed the stamps for everybody. Could there be lucrative arrangements for the Swedish Post lurking in all the changes in Europe? These issues strike me as excellent business acumen on the part of Sweden Post.

[Thanks to Global Stamp News for putting me on to this.]

* S * C * C *



Pelander Award Winner Wade Beery

Wade H. Beery, SCC Mart Manager for nearly 25 years, has been named recipient of the Club's Carl E. Pelander Award. The presentation will take place at our annual convention at FLOREX 93 in Orlando the first weekend in November. The award was created in 1968 to honor the name of one of SCC's founding members and the first editor of *The Posthorn*.

The Pelander award recognizes those who are willing to help fellow philatelists in all phases of Scandinavian philately. By serving so many collectors for many years with the SCC Stamp Mart activity, Wade has indeed helped members to dispose of and acquire material for their collections. Wade is the seventh individual to receive the Pelander Award.

From Pennsylvania to Florida

Wade Beery was born in Sadsburyville, PA in October 1920. Three years later his family moved to Bradenton, FL, as he says, "without consulting me." After graduating from Bradenton

High, Wade attended the University of Florida but dropped out when his father passed away. He took a job at the First National Bank of Bradenton, and then joined the Navy in order to avoid being drafted by the Army.

Wade's military career took him from Florida to the Pacific Fleet, to Kodiak (Alaska), Seoul and Pusan, Tokyo, and various Pacific and Atlantic fleets as well as shore stations in the U.S. While serving in the Office of the Secretary of the Navy's Office of Information, Wade left active duty in 1966 as a Master Chief Petty Officer. On his complete retirement, he moved to Orlando.

In 1944, Wade married June and they have two children and three grandchildren.

Philatelic Activities

Wade learned stamp collecting the hard way, as he says, making many mistakes along the way. During an illness which kept him confined at home in 1929, he took up collecting. He

committed such philatelic sins as peeling stamps off of envelopes, using LePage's glue for mounting them, taking old stamps off envelopes that would have been good postal history items, and misidentifying many, many stamps. However, he recalls those days proudly as he glances at his first album, which he still has — a 1929 Scott Imperial Album.

Wade acquired another Scott album, this time the Modern Album in 1934. As with many collectors, his interest waned for a few years, but was rekindled during those long nights while stationed in Alaska in 1947. The following year he picked up a large accumulation of Iceland, which he still dips into from time to time, looking for inverted frames.

Wade has a modest interest in the other Scandinavian countries as well as general U.S., the U.S. Departmental Specimens, and Obock. He was about to become a life member of the Society for Philatelic Americans when the organization went out of existence. He is a life member of the APS, and Honorary Member No. 18 of SCC. Other philatelic organizations of which he is a member include the Scandinavia Philatelic Society of Great Britain, the

Scandinavian Philatelic Foundation, the Central Florida Stamp Club, and the Florida Postal History Society.

He served as editor of *The Florida Philatelist*, the publication of the Florida Federation of Stamp Clubs, Inc. from 1978 to 1981. As mentioned earlier he was the devoted manager of the SCC Stamp Mart. Anyone who sold or bought material via the Mart became familiar with Wade's green ink and his penchant for detail and accuracy. He has spent the past several months going over the Mart books finding some small discrepancy in totals, which just bugs him.

Doctor's Orders

For the past year or two Wade has engaged in a strict regimen of exercise and diet as ordered by his physician. For some months he was walking ten miles every day, although this has now dropped to seven and a half miles. He watches his cholesterol, and his HDL/LDL ratio. Wade still finds time to visit family; including an older sister and an aunt. We all look forward to meeting our retired Mart Manager at FLOREX 93 and to see him receive the Carl E. Pelander Award which he so richly deserves.

—Alan Warren

Scandinavian Foundation Names Trustee

The Scandinavian Philatelic Foundation has elected Paul A. Nelson of California as a Trustee. Nelson brings extensive knowledge and writing experience to his new position. He is editor of the monthly journal *Luren*, published by the Scandinavian Philatelic Library of Southern California. This award-winning newsletter is devoted to the stamps and postal history of the Nordic countries.

Nelson is a regional director of the Scandinavian Collectors Club, representing Chapter 17 in Los Angeles. He is former editor of the chapter news column in *The Posthorn*.

The Scandinavian Philatelic Foundation was established in 1978 in order to translate and publish English language

studies of the philately of Denmark, Finland, Norway, Sweden, Greenland, Iceland and related areas. The Foundation has published 18 specialized monographs and catalogs in this field.

Nelson has edited two volumes of the *Catalog of Scandinavian Revenues*, sponsored by the Foundation. He specializes in the fiscal and Cinderella issues of the Nordic countries including the "charta sigillata" or stamped revenue paper of Sweden.

An application for membership in the Foundation and a copy of their current list of publications can be obtained by sending a request with a #10 SASE to Scandinavian Philatelic Foundation, Box 6716, Thousand Oaks, CA 91359.

* S * C * C *



Fig. 1 — A rare combination of unusual destination, printed matter rate from the classic period, use of a wrapper, and full contents.

A Unique Item from Sweden

By Lauson H. Stone

One hesitates to call any philatelic item unique lest there be another lurking in the vault of some collector or dealer. The uniqueness of the April 16, 1867, cover shown in Figure 1, however, is due to no single element but to a combination of very scarce features.

1. **Destination.** In this case the destination was Venice, Italy. By the time this cover was mailed, Italy had completed the process of unifying a collection of independent states and principalities into the Kingdom of Italy, with the exception of the Papal States. During and after this process, the Swedish postal rates for regular letters to Italy continued to vary with the particular destination. However, in 1862 Sweden established a single uniform rate for printed matter to Italy, regardless of the destination. As statistics in the *Facit Catalog* show, all mail to Italy in the classic era of Swedish philately (1855-72) is scarce. See also *Swedish Letter Rates to Foreign Destinations 1855-1895* by Billgren et al, pp. 120ff.

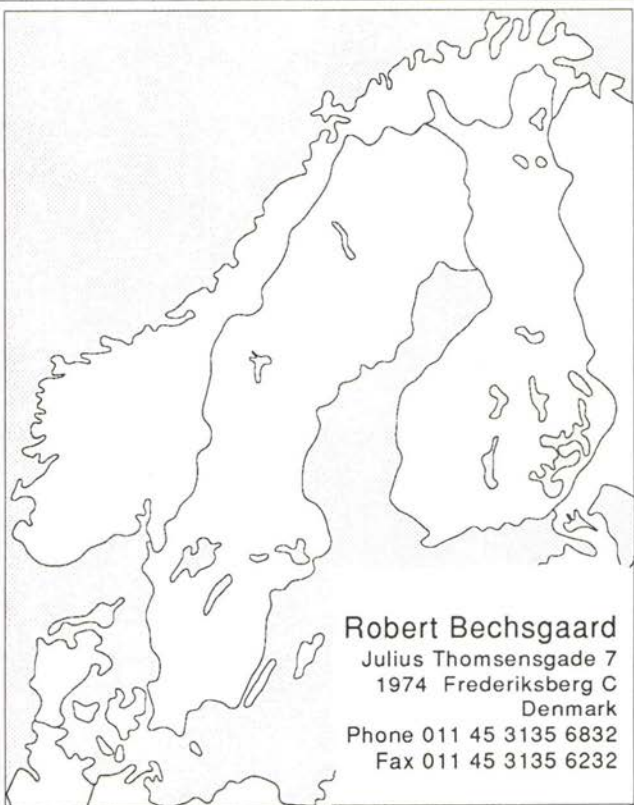
2. **Printed matter.** Examples of

rates for printed matter at this time are generally scarce, particularly to Italy. The rate to Italy from May 1, 1865, to March 31, 1869, was 14 öre for the first 8 orts (40 grams), plus 5 öre for each additional 3 orts (15 grams). Thus this particular item evidently weighed more than 8 orts and accordingly required, in the parlance of Swedish philately, the "double rate," i.e., 14 plus 5 öre. This rate applied to printed matter sent to all places in the Italian region via Prussia and Switzerland or via Prussia and Austria.

3. **Use of wrapper band.** Printed matter was usually sent in the form of a folded letter or document or in an envelope. According to the Swedish rate tables, the printed matter rates also applied to price lists and samples sent in a wrapper. However, examples of wrappers during the classic period are practically unknown. In more than 40 years of collecting Swedish classic issues, I have examined hundreds of auction catalogs and collections in exhibits but have never before come across an item clearly in the form of a wrapper.

BECHSGAARD

We are
an
excellent
partner
helping
you to
expand
your
stamp
collection



Robert Bechsgaard
Julius Thomsensgade 7
1974 Frederiksberg C
Denmark
Phone 011 45 3135 6832
Fax 011 45 3135 6232

Denmark
Faroe Islands
Greenland
Danish West Indies
Finland
Åland
Iceland
Norway
Sweden

4. **Contents.** This particular item includes not only a wrapper but its contents. Some years ago I had the opportunity in Sweden of examining this same item. The contents are a price list of Swedish liquors that the sender presumably hoped to sell to the recipient, a restaurant in the Piazza San Marco in Venice. The adhesive stamps were used to secure the wrapper to the price list.

It is this combination of features — a *wrapper* with *contents* bearing the

printed matter postage rate to Italy — that makes this item unique. Evidently its uniqueness was appreciated at the Postiljonen Auction No. 153 in Oslo on September 26, 1992, where it brought 72,000 Swedish kroners plus the auctioneer's 15 percent commission (nearly \$13,000 in all).

This item is a superb example of how important it is for collectors to understand all there is to know about their covers.

* S * C * C *



Copenhagen's Machine Cancels

Flemming Hansen: *Helstempling 1904-1992. Københavns Lokalområde*. 126 pages with numerous illustrations. 248.00 DKK (+postage but - VAT) Robert Bechsgaard, Jul. Thomsens Gade 7. DK-1974 Frederiksberg C. Denmark.

Flemming Hansen's book about the Copenhagen machine cancels crowns many years of painstaking studies of this not very easily accessible topic. With the help and encouragement of Erik Jensen from the Danish Post Museum, Flemming Hansen really got his grip around all these postmarks. It is an extremely interesting book, not just to use but also to read, for an average collector because F. H. tells so many small features about the various stamps and their origin — things that show the work done by the Post Office with our daily mail.

Hansen's text is clear, concise and very easy to understand, even for the beginner, in this very interesting area within postal history. Unfortunately for the many collectors of Danish

postmarks here in the United States, the book is in Danish. It is, however, of such a great value it ought to be translated into English and published here. Even if you are not especially a postmark collector, it is very informative reading because of the many postal facts Hansen gives.

The machine postmarks of Copenhagen is not an easy topic to tackle but Hansen has solved the problem very well. Millions of mail pieces were cancelled with this kind of a canceler. Hansen found that in spite of this fact there are some cancellations that are rare and elusive — as the dealers like to term it. Erik Jensen has written the introduction to the book. He told me that he wondered why it took Hansen so long to solve the problem. When he saw the manuscript to the book he suddenly understood. Hansen has really trenched the topic. Nothing is left out or forgotten. No doubt the book will create new interest in this area of collecting.

—D.L.

* S * C * C *

Detecting "Improved" Covers

By Erik Paaskesen

Modern forgeries of postage stamps are — fortunately — comparatively rare. In more than 10 years of expertising Denmark and Danish West Indies, I have encountered only one good forgery and I doubt that I shall see many original and good forgeries. The philatelic knowledge of today's collector will defeat all but the very best of forgeries making it both difficult and costly to produce new forgeries.

However, in the past decades collecting interests have switched from single stamps to covers and postal history and consequently a veritable cottage industry has sprung up improving and manipulating covers. With the often very high premiums paid in today's market for rare and attractive covers this is a lucrative industry. Unfortunately, some of the people offering their services in "improving" covers are very talented; making it almost impossible to detect their handiwork unless you are lucky enough to stumble across an older photograph of the item.

In recent years a number of improved Scandinavian covers have been offered for auction by various German firms. The illustrated Danish cover to a prisoner of war in Prussia was offered in its original smudgy state

by Postiljonen in Malmø in October 1989 where it sold for SEK 10.500. Three months later it was offered by Fehr in Freiburg, Germany at a starting price of DEM 12.000 or four times the amount it fetched at Postiljonen's with a certificate from a Swiss expert. Fortunately the cover did not sell. In the meantime it had been completely cleaned and the missing upper right corner tooth on the 4 skilling stamp had suddenly reappeared. The cover could now be described not only as the postal history rarity it always was but also as a beautiful and spectacular item.

How do you convince yourself that this cover was manipulated if you do not have a photograph of the original stage? Notice first of all the slight foxing of the ink. This is an unmistakable indication that the cover has been soaked, probably in water. If you see any indication of soaking try to feel the paper and flip the edges of the cover over your thumb. Now do the same with a cheap, normal cover and notice the difference in the paper. If paper is soaked it loses its original elasticity and becomes much softer. Now that your suspicion has been aroused you hold the cover up to daylight in such a manner that the light hits the cover at as flat an angle as possible. In

Scandinavian Special Auctions

Please ask for our free, illustrated catalogues, always containing single items, collections, postal history, covers and a lot more. Only top quality and very low start-prices.

P.O. Box 2586
Korsørgade 18
DK-2100 Copenhagen
Denmark

INTERPHIL

Tel. 011 45 35 430783

this manner it is often possible to see improvements to the cover. Next you put the cover under an ultraviolet light source which will hopefully reveal the remnants of the large ink spot that was removed. If you are lucky you will also spot the new corner tooth but much of what is made today does not show up under ultraviolet light making these improvements particularly dangerous.

There is no question that this cover was "improved" to increase the

commercial value and thus to defraud the potential customer. Unfortunately, I have seen a number of such expertly manipulated covers in the last five years and some of them are so good that it is almost impossible to detect the improvements.

In future articles I will show some other examples of the talents of philatelic handymen.

* S * C * C *

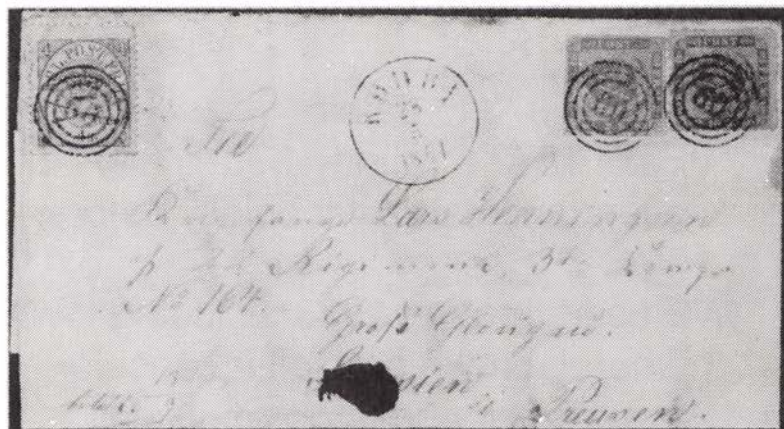


Fig. 1 — Cover as it appeared in Postiljonen Catalog in October 1989.



Fig. 2 — Here it is, three months later, much improved with no smudges and full teeth on 4 sk.

ICELAND WANTED

We are seeking better quality stamps and covers of Iceland. We are interested in the following:

- *VF NH 1873 to date
- *VF LH 1873 through 1933
- *Covers and cards especially before 1944
- *VF used through 1933 including town, numeral, crown and tollur cancels
- *Pairs, blocks and larger multiples
- *Individual rarities
- *Advanced and specialized collections

*Buy list available on request.
Inquiries welcomed.
What can you offer?*



**HAKENSONS
SCANDINAVIA**

10662 Lora Street
Temple City, CA 91780

APS

We buy all Scandinavia

SCC

The Most Expensive Ever! A 100 Kroner Greenland Stamp

By Dr. Dan Laursen

Until now, the most expensive stamp during the reign of the Danish Post Office was the 50 DKK red in the small coat of arms design (Scott #720A). Lately Greenland has also issued 50 kr stamps. During the Olympiad year, when records were falling like "spike to the scythe" or forests to the ax (or rather, chain saw), these high value records fell. [Ed. Note: "spike" is the top part of the grain or the ear.]

The new record holder at 100 DKK (the US \$14 stamp has a value of about 91 DKK) was issued September 15, 1992 by Kalaallit Allakkeriviat (aka the Greenland Post Office). The stamp shows a portrait of Lars Møller, Greenland's Gutenberg.

Lars Peter Silas Matthaues Møller was born January 10, 1842 at Godthaab where his father was a carpenter and the head of the colony's tenured work force. His Greenland name was Arkaluk, which means: "the oldest sister's younger brother."

When Lars Møller was born there was almost no reading material available in the Greenland language apart from the Bible, catechism and a few Psalms plus a few translated Danish songs.

In 1857 the Danish scientist Dr. H. J. Rink, who did extensive fieldwork in geology in Greenland previously, was made Inspector for South Greenland with offices in Godthaab. He brought with him a printing press and engaged the 15 year old, bright and handy, Lars Møller to operate the press. In the fall of 1861 Lars Møller went to Copenhagen where he was apprenticed for two years as a printer and engraver in wood.

After his return to Greenland, he set to work on his life-work: the editing and printing of "Atuagagdliutit," Greenland's first, and for many years, only, newspaper. The name means "Something offered to read" — for free



Highest face value stamp ever for Danish area.

that is.

The paper was partly written, typeset, and edited by Møller and often illustrated by his own wood engravings — sometimes handcolored. Thus this paper became a pioneer: the first paper regularly bringing illustrations — long before any other paper in the world.

During his years the printing office produced printed matters, folklore, a world history and lots of books. The work of Lars Møller had a big share in the love of reading and writing by Greenlanders and inspired their understanding of keeping the printed word alive in Greenland.

In 1917 Lars Møller was decorated with the Order of Merit and knighted as a Knight of Dannebrog. He died in 1926 at 84 — an age not common for Greenlanders. He was immensely revered among his countrymen and Danes alike.

One can see why Lars Møller's por-

trait is on a high valued stamp. However, is there really use for a 100 kr stamp? Isn't it a rip off of stamp collectors just like when the USPS puts the Olympic rings on high value USA stamps?

The answer to the first question is yes! Which answers the second as well. A lot of Scandinavian collectors have observed that the rates in the Nordic countries have risen quite a lot in the last decades. It is now so much that it really

is more than an arm and a leg, as we say in the US, or the white of your eyeball, as they say over there. A parcel from Greenland to Denmark weighing two pounds is 52 DKK in postage. A parcel from one town in Greenland to another weighing 10 kg. costs 155 DKK. The space on the address card is only 1" x 4" while a 10 kr stamp is 1 x 7/8" and the same goes for 25 and 50 kr stamps. It should be obvious that this stamp is not a rip off but really needed.

New Literature on Greenland Postal History

Torben Hjørne: *Postal History. Postmark Catalogue 1877-1992. Greenland Vol. 2, catalogue.* Torben Hjørne publisher. Box 536, Aarhus, Denmark. A-4 format. 52 pages w. numerous illustrations.

Torben Hjørne is no doubt one of our finest — if not *the* finest — experts on Greenland Postal History. He is also a very ambitious man. Years ago he decided to write a detailed Greenland Postal History! In 1982 he issued volume 1 which dealt with the parcel cards. In the following year, 1983, volume 3 was issued; comprising the Parcel Post stamps and the regular stamps from the first stamps issued 1938 to the famous "Mother of the Sea" — the first stamp drawn by Jens Rosing. In 1985 he published a special catalog of what he calls "Classic Greenland" written in English. Now the catalog to vol. 2 has seen the light of day.

The interest for this catalog was so great that the test edition was swept away immediately. Now T. H. is working hard on the definitive edition. Volume 2 of T.H.'s Postal History will deal with the Greenland postmarks and therefore this catalog only deals with these postmarks. This catalog is different from all other postmark catalogs in a very important respect: it is first and foremost the postally used postmarks that are mentioned and are cataloged. It does matter whether the imprint is on a piece or on a philatelic looking letter, but they are priced the

same. As most collectors and all exhibitors have learned during the last ten years, there has been a very sharp turn towards so called "genuine" postmarks; i.e. — postmarks on commercially used mail. That is the reason why prices on FDCs, exhibition postmarks, CTOs etc, etc, have declined so much. T. H. catalogs ALL the Greenland postmarks ever used, which is nice.

Really new and quite sensational information in the new catalog is the recording of two postmarks used in Julianehåb between 1958 and 1972 and a postmark used at Dundas from 1963 to 1973. That something like this can happen may be because of the very decent stamp policy of the Greenland Postal Service who did not always try to make money when postmarks were withdrawn or cancelled. This, by the way, has also changed.

Like every other country, Greenland has a lot of "look-alike" postmarks. T. H. gives countless remarks to support the identification of the particular postmark; making it much easier to figure out which one you have.

The cataloging of special postmarks, Christmas postmarks and other special types of postmarks are separated from the common datestamps and in their own sequence. The listing of machine cancels does not look like the cataloguing used so far. Identical slogans are not illustrated at every station they were used but only one in a

summary. Also, mono- and bilingual text postmarks are listed under their own catalog number which is an advantage. A catalog can only be evaluated correctly when used. I have tested the catalog on my own once complete postmark collection. I say *once* because I found out that the collection was not as complete as I thought it was when I used T.H.'s

catalog. This catalog is absolutely the best ever issued.

The definitive issue will be in laser print. It may be a good idea to write Torben Hjørne that you would like to buy a copy. Dealers who want to advertise should also contact T.H. now. His address is: Torben Hjørne, Postbox 536, DK-8100 Aarhus C., Denmark.

—D.L.

From the SCC Library Nordic Industry and Stamps

Two magazine format items in the SCC library have a wealth of information about the Nordic cooperative group, Swedish industry and considerable detail about Scandinavian stamps. These are two interesting issues of "Sweden Illustrated."

About 1945 the first edition was produced by Swedish industry representatives although that is not stated. It contains some advertising, several informational articles on various industries, and uses stamps in illustrating the industrial world of Sweden. This first issue not only shows stamps of Sweden, but also those of six other Scandinavian countries.

The lead editorial indicates that questions had been forwarded showing an interest in the stamps of Scandinavia as a collective world area. The second issue did not appear until approximately sixteen years later. The motif used to illustrate the extent of Nordic cooperation and interaction is, of course, the stamps, with a sub-title "Kinship and Cultural Unity Reflected in Scandinavian Stamps." The intent of the issues having been produced in English was to familiarize English speaking nations with Swedish industry.

The unique approach used in Part I is the illustration of the stamps of all the countries through 1945 in a sort of blank album allowing the collection of all basic issues. What is different is the layout. At the top of each page is a running date line. Below, one after the

other, are illustrations of the stamps of each country issued near that date. The design variety of each country becomes apparent as the years pass. Part II reverts to a section of Swedish stamps only, in pages of pictures of all the motifs followed by a conventionally arranged series of album pages. Scott numbers are used rather than those of Facit for distribution in English speaking countries. The second issue brought the collection up to 1961. Neither issue is meant to be more than a basic beginning collection.

The industrial reviews in the two issues are dated. Still, they make extremely interesting and detailed reading about Sweden's industrial growth and its major fields of endeavor — as they relate to the stamps. These issues are a great help in writing up one's own album pages.

The issues were produced with the aid of Einar Lundström of Frimärkshuset and the support of officers of five postal agencies.

A sampling of subjects includes: "A Philatelic Map of Scandinavia," "Background and History of Scandinavian Co-operation," "The Nordic Council," "Alfred Nobel and Bofors," "Stamps Illustrate VBB's World-wide Activity," etc. It would be difficult to find as comprehensive a collection of information in any other one source.

Drop Dr. Melberg, SCC librarian, a line! These unusual publications are S-79-E and S-80-E.

—Russell H. Anderson

SCANDINAVIA

Innlagðar Krónur 3150
Haukinn, St. S. Steingrard

MADE IN SWEDEN

SVERIGE

AU AUTOPAKETTI
0031349
100

Kalaallit Nunaat · Grønland · Greenland · Grönland
Færiskilpósturinn Færiskilpósturinn Stamp Booklet Briefmarkenheftchen - No.1

DKK 27,60

DANMARK
ØRE POSTFRIMÆRKE

Free Price lists are available for all Scandinavian countries.
Tell us what your collection interests are, and what catalog you use.

Jensen & Faurschou
St. Gråbrødrestræde 3-5
DK-5000 Odense C
Denmark
Phone : +45 66 11 35 58
Fax. : +45 66 12 63 77

The Color Saturation Designations of Swedish Ring Type Stamps

By Frank Baze

Ever wonder what the numbers within parentheses mean which appear in the FACIT catalog after the color descriptions of early Swedish stamps? For example, FACIT Sweden #17a is the 3 öre perforated 14 ring type which is listed as "greyish yellow-brown (5-4)." The "(5-4)" is the color saturation designation for this particular stamp.

Since white exhibits no color it is assigned a color saturation designation of "(1)." At the opposite end of the scale is black which is assigned a color saturation designation of "(10)." As an example, FACIT Sweden #18b¹ is the 4 öre perforated 14 ring type whose color is "black" followed by the color saturation designation "(10)." Between white and black exist all of the other colors which have color saturation designations ranging from a maximum of "(10)" which means dark, deep, or rich color to a minimum of "(1)" which means light, pale, or dull color.

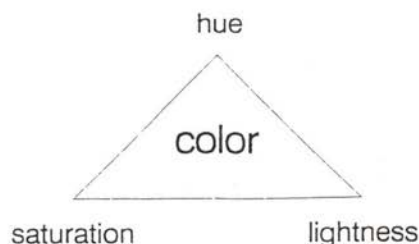
An individual color will vary in intensity depending upon, for example, how thinly or thickly the ink is applied. The type and color of the paper used may have an effect on the color intensity for a particular stamp as well. In some cases adding black to the ink results in a darker or more saturated color.

Certain colors, such as some yellowish shades, never exceed a color saturation designation of "(6)" and, for the most part, stay below "(5)." An example is FACIT Sweden #24i which is the 24 öre perforated 14 ring type whose color is "lemon-yellow" and color saturation designation is "(4-2)" meaning that its color saturation may range from a maximum value of four to a minimum value of two. The convention is to always state the largest number within the parentheses first which represents the high end of the color saturation

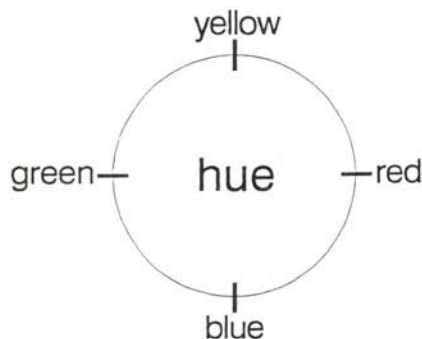
designation range for that particular stamp.

Color

The modern day subjective description of color is given in the form of three attributes of sensation:



Hue is the color description or appearance of the color. There are four colors that appear to have no tinge of any other hue as follows:



Red, blue, green, and yellow are sometimes referred to as unitary hues.

Lightness is the attribute by which color may be referred to a scale of black to white.

Saturation describes the vividness of the hue or, in other words, that aspect of color by which it appears to differ from a gray of the same lightness. saturation is also known as chroma.

Color Saturation Designation

The color saturation designations which appear in parentheses after each color description or hue are actually combinations of the saturation and lightness attributes:

**saturation + lightness =
color saturation designation**

Where applicable, a color saturation designation will also contain a range which is indicated with two numbers separated by a dash as discussed previously. So instead of using three attributes to define a particular color, FACIT has accepted the two attribute

system from SVERIGES FRANKOTECKEN 1855-1905 (Swedish Postage Stamps 1855-1905).

Predominant Colors

The 31 different Swedish ring type stamps listed in the FACIT catalog encompass a total of 231 different shades. Examining the highest color saturation designations for each of the predominant colors yields Table 1.

Olive is the only hue utilized which does not appear as a predominant color for any of the ring type stamp shades. Olive may be obtained by mixing

**Swedish Ring Type Stamp Predominant Colors
Sorted by Highest Color Saturation Designations**

10	black
	brown
9	blue
	green
	carmine
	violet
8	grey
	red
	lilac
7	rose
	orange
6	ultramarine
	yellow

brown, green, and white inks or alternatively by mixing green, yellow, and black inks in appropriate proportions.

As it pertains to ring type stamps, a color saturation designation of "(10)" is limited to the blacks, blacks with brown, and browns with black. Lemon yellow and pale orange are the only ring type shades with color saturation designations which go as low as "(1)."

Color Saturation Designation

Distribution

Another way to examine the 231 shades of Swedish ring type stamps listed in the FACIT catalog is to sort them by their maximum color saturation designation and then form a histogram as below.

Note that two thirds of the range maximums fall between "(8)" and "(6)," specifically 154 out of the total 231 shades.

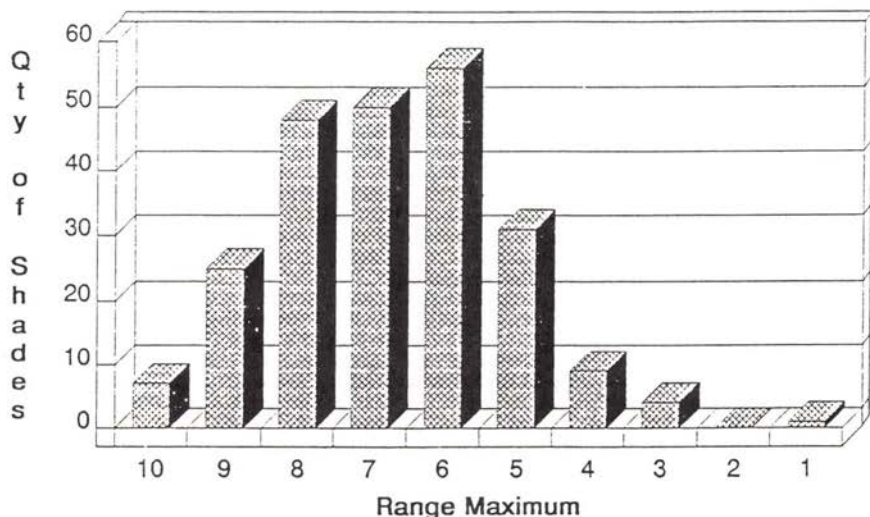
In Conclusion

It is interesting that carmine by itself may range from "(8-6)" (FACIT #36a) and rose by itself "(7-5)" (FACIT #26a) but put them both together to form carmine-rose and the range drops to "(5-

4)" (FACIT #36b). This only serves to illustrate just how subjective the color names and colors saturation designations really are. To take the act of describing color from an inexact science to an exact science, one might consider studying colorimetry. The problem with colorimetry is that the end result is an energy distribution showing spectral wavelength versus relative intensity which may indicate the presence of several colors. Since the eye perceives only a single color for any particular energy distribution, we find ourselves back at describing colors in a perception (subjective) sort of way.

[Ed. Note: While FACIT now uses this color designation scheme through the ring types, the new Oscar Period handbook uses it, the old SFF catalogs used it through Gustav left profile issues and part II of the three volume handbook uses it through Gustav right profile issues. We hope this article explains how the system works. Personally, I think all a collector can do is get 100 copies of the same stamp and sort through them as best one can knowing some stamps have been sitting in the sun. It still beats television.]

**Distribution of Swedish Ring Type Stamp
Maximum Color Saturation Designations**



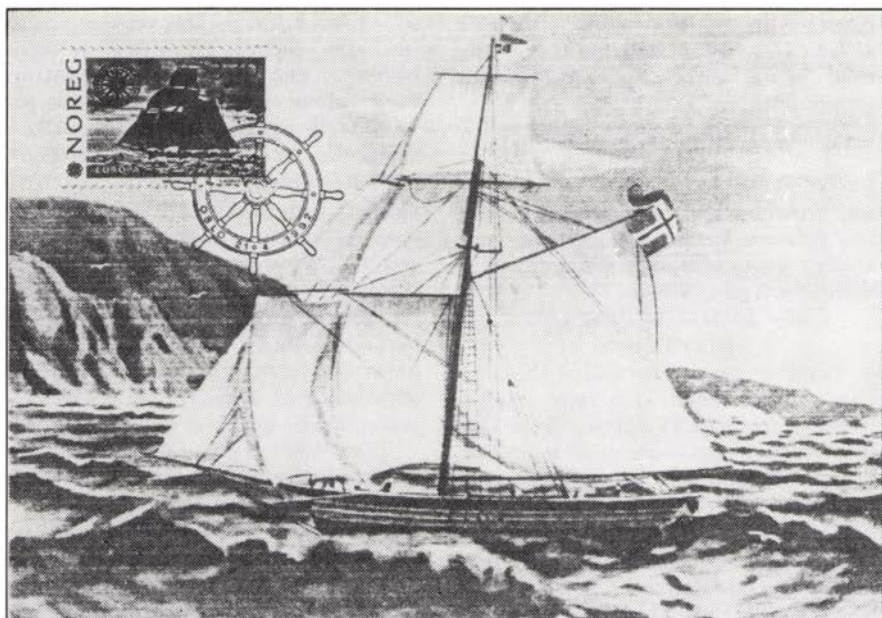


Fig. 1 — Maximum card FDC featuring “Restauration,” the sloop which brought the first load of Norwegian emigrants to New York in 1826.

Norwegian Maximum Cards

By Roe C. Blume

On 6 October 1989 the Norwegian Post became one of the last posts in Europe to issue official maximum cards (MC's). The first issue of 34,877 sets of four cards featured NK1076-79, Norwegian Winter Olympic winners from Lake Placid and Sarajevo. The next of such issues featured earlier Olympic winners and were issued on 5 October 1990 (12,736 sets of four, NK1099-1103), 11 October 1991 (12,551 sets of four, NK1123-1126), and 21 February 1992 (sets of four, NK1139-1142). The last three sets were also issued as maximum cards by the LOOC, Lillehammer Olympic Organizing Committee. In addition,

LOOC prepared MC's of the two “Lillehammer 1994” stamps, 9 October 1992, NK1154-5. All LOOC MC's have been in editions of about 30,000. It is clear that other LOOC editions are coming as a crescendo to the Winter Olympics in Lillehammer 12-27 February 1994.

The popularity of the official and LOOC issues was certainly fueled by the earlier activities of private enthusiasts and the Norwegian Maximum Club who have made MC's in limited editions of almost all Norwegian stamps since 26 February 1981 (NK875-878). These were prepared in issues as low as a few

***Please Support our Advertisers!
Encourage Scandinavian Collectors to join SCC!***

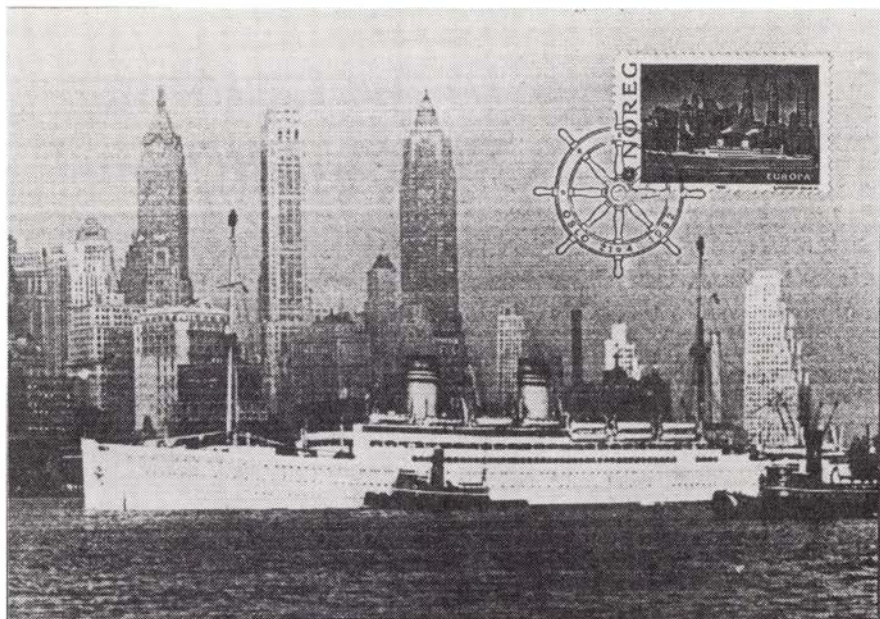


Fig. 2 — "Stavangerfjord," built in 1918, an important Norwegian passenger steamer for the North Atlantic.

hundred and according to FIP rules.

Mr. J. Daae-Qvale, N-6260, Skodje, Norway is a collector of Norwegian MC's and has offered to answer

questions of readers who may wish to write to him.

* S * C * C *

Scandinavian Collectors Club 1993 Library Index

Lists all articles, books and
other references!

*Services available by mail
to all members.*

96 pages
Subject Cross-Index
Author Cross-Index

Compiled & Edited by:

Dr. W. E. Melberg, SCC Librarian
P.O. Box 134
Allenton, WI 53002

\$6.00 Donation is Requested

New Finnish Agent in North America

NORDICA from New York has been appointed to represent the Finnish Philatelic Centre in the United States and Canada for the purpose of distributing Finnish postage stamps in North America.

Both dealers and collectors are welcome to place their orders with Nordica — which offers all current Finnish issues at face value.

Nordica is currently the representative for the Faroes, Denmark, Greenland, and Iceland as well. Contact Nordica, P.O. Box 284, Old Bethpage, New York 11804. Fax/phone (516) 913-3485.

* S * C * C *

Welcome to the Leading Norwegian Stamp Auctions!



Twice a year we arrange a public auction in Oslo as we have been doing for some 15 years. The total turnover has been some NOK 10 millions a year. Each auction contains approximately 1100 lots with starting prices from NOK 100.

Our most expensive item was sold for \$125,000 in 1987; Norway No. 1 in a block of nine from the world famous "Vi King" collection formed by Mr. Jared H. Richter. This is a Norwegian all time high.

The auctions also include top quality objects from many other countries. The market for stamps in Norway is one of the strongest in the world, and this is reflected in the prices realized not only for Scandinavian items. Our computer systems includes some 18,000 customers worldwide and we believe our selling potential would be most interesting also for vendors abroad.



We would be happy to serve you. Drop us a line - or a fax or give us a call for a free copy of our auction catalogue or for further information.

Elisenbergvn 19 N-0207 OLSLO 2
NORWAY. Phone 47-2-441914
FAX 47-2-560404

Come One, Come All SCC National Meeting FLOREX '93

SCCers are getting together November 5-7, 1993 for our annual meeting. There will be great Scandinavian exhibits by us Scandinavian collectors. Arne Thune-Larsen, of Oslo, will make a presentation on Norwegian-French postal relations 1760-1880 featuring routes, rates, and transit markings.

Mr. Thune-Larsen will also be a judge at FLOREX as well as SCCer Steve Schumann. There will be an SCC award for the best Scandinavian exhibit. The Delaware and Florida West Coast Chapters are duking it out one-on-one

for chapter exhibits. Your editor plans to be there to meet as many of you as possible.

Prospectuses can be had from our Executive Secretary Bob Lang or James A. Estes, 2663 Derbyshire Rd., Maitland, FL 32751-3665. Wade Beery, PO Box 3781, Orlando, FL 32802 has hotel reservation cards.

Be there or be square and perforated. OK, so this is hype. But we really would like to see you at our national meeting. Let's get together.

* S * C * C *

FACIT® Postal 1993: A Review

By Alan Warren

FACIT Postal 1993, ed. Gunnar Joos, 6-3/4 by 9-1/2 inches (17 by 24 cms), 384 pages, softbound, illustrated, FACIT Förlags AB, Stockholm. Available from Subway Stamp Shop, 111 Nassau Street, New York NY 10038, \$45.76 postpaid.

The Facit postal history catalog, published every two years, is out in its 1993 version, and it has quite a number of changes. The most obvious one is the change in size to the larger format of its sister, the Facit Special catalog. The prestamp period of postal documentation at the beginning of the catalog is consolidated and gives examples of the variety of markings found in this period.

The table of postal rates from 1855 to present and the valuations of covers franked with Swedish stamps follow, similar to the earlier editions. A new feature of this edition is a listing of covers from the period 1855 to 1891 which sold at auction during the preceding two years, with prices realized.

The "B" and "F" (paid and free) letters respectively, and the listings of straight line, arc cancels, rectangular cancels, and the circle or Normal Cancel 10 are listed after the labels section rather

than before as in the earlier editions. As in previous editions, the bulk of the catalog is devoted to the listings of place name or town cancels found on the various definitive issues of Sweden.

The tables of rural mail service cancels have been expanded as well as those for railway cancels which now include the PKXP types. The typeface, illustrations, and overall appearance are easy on the eyes. The text is in Swedish and English, so that the Sweden specialist should have no problem in finding what he needs to know about the basic elements of that country's postal history.

* S * C * C *

Did You Know? DWI One Cent on Seven Cent Bicolor Provisional

The overprint of the one cent on seven cent bicolor provisional of 1887 was necessary because a merchant purchased most of the existing supply of one cent stamps at the St. Thomas Post Office to prepay postage on a circular.

* S * C * C *



Scandinavian Literature Notes

By Alan Warren

In the 4th Quarter 1992 issue of *Postal History*, published by the Postal History Society of Great Britain, Eric N. Jackson writes about Norwegian ship post in the period 1906-1907. His comments are based on recently found copies of timetables located in Norway. The timetables have been placed in the Society's library but Eric comments on general conditions of the ship routes, weather, and the operation of ship's post in those days.

In the Swedish "Cinderella" journal *Bältespännaren* 2/1992, Stig Kjellander contributes another article about the stamped revenue paper of that country. He describes and illustrates four types and discusses varieties. In the December issue of *Dansk Filatelistisk Tidsskrift*, editor Lennart Weber discusses the designs of the 1992 Denmark and Greenland Christmas seals, and Leif Hasle recounts the history of these stamps with the establishment in 1904 in Denmark of a special committee to promote stamps for charitable purposes.

Postal History Index

The Danish Postal History Society has completed twenty years of publishing its journal *Posthistorisk Tidsskrift* and marked the occasion with publication of a 20-year index. Copies can be obtained for 75 DKr from Karsten Hagsten, Tranumparken 30 st., 2660 Brøndby Strand, Denmark. In the December issue of *Scandinavian Contact* from England, Alan Totten describes and shows varieties of the 1888 revalued postal cards of Norway, and Eric N. Jackson furnishes a 20-page article on the early development of Norway's railways.

In the July 1992 issue of the *Civil Censorship Study Group Bulletin*, E.

Menne Larsen traces the journey of a censored cover which went from Finneid, Norway to Iran in 1941. SCC President Roger Schnell describes Caribbean purser mail on the Hamburg American Packet Line in the 1992 *Congress Book* published by the American Philatelic Congress. Cost of the book is included with membership in the APC. For an application write to the Secretary-Treasurer Russell V. Skavaryl, 222 East Torrence Road, Columbus, OH 43214-3834.

The October issue of *Het Noorderlicht* from Netherlands has been dramatically reformatted by the new editor G. van der Vossen. J. A. Konings gives a brief history of Norway describing the succession of Kings and using stamps for illustration. Editor van der Vossen highlights some Greenland postal history in the same issue.

The January issue of *Dansk Filatelistisk Tidsskrift* carries articles on registered mail and the postal history of Ribe. In the February issue Jens Vildrik gives an overview of the railways as seen through Danish philately. In the November *Svensk Filatelistisk Tidsskrift*, Swedish philatelic experts Roland Frahm, Bo E. Stavenow, and Karl-Erik Stenberg illustrate early Swedish stamps with cancels which predate the issuance of the stamp. Forged cancellations are becoming more and more of a problem.

Perforation Varieties

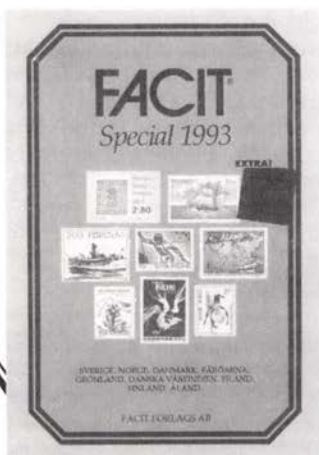
In the same issue of *SFT*, Bo Stavenow and Erich Harbrecht illustrate perforation varieties of Sweden's Coat of Arms issues. The December issue features reports on the Wexiö 650 and Genova 92 exhibitions. In the German publication *Philatelistische Nachrichten* for November, Julius Spatz writes about



1993 Facit

Now Only **\$51.95** Reduced from **\$59.95!**

- Free Faroe Europa 1992 Souvenir Sheet
- Complete English/Swedish text
- List price \$65.00
- Call toll-free with VISA or M/C
- U.S. Orders Postpaid (book rate)
- Foreign orders add \$3.00 for surface mail. Airmail is extra.



Jay Smith & Associates

P.O. Box 650-602

Snow Camp, NC 27349

1-800-447-8267 or 1-919-376-9991

Fax 1-919-376-6750

prisoner of war and internee mail in Denmark during the period 1940-1945, and Rolf Dörnbach illustrates some Greenland postal history items including the use of "Ship Letter" handstamps.

In the same issue Günter Pansegrau details paper and gum varieties of the stamps of Iceland over the past forty years. Jürgen Tiemer illustrates varieties of the early first day cancellations of Norway. The publisher of this journal is the FG Nordische Staaten e.V., and each Nordic country has a study group leader responsible for the material in the journal. The new leader for Sweden is Günter Wahl.

Norway Prestamp

In the December issue of *Norsk Filatelistisk Tidsskrift*, Steinar Wrang-sund illustrates some folded letters of Norway sent before 1849, and discusses the weight classes, rates, and charter numbers. Paul Jensen writes about forged overprints on Norwegian postal cards. In the January issue, Finn Aune illustrates some lovely covers to Italy

bearing copies of Norway No. 1, and Karl-Erik Stenberg writes about early handstamp markings of Finland.

Birger Løvland describes cancellations of Galdhøpiggen, Gjuvvasshytta, Spiterstulen, and Glitterheim in issue 4/92 of *Frimerke Forum*. In the same issue Jon Westlund goes into some detail on the "T" markings found on Norwegian stamps. The letter "T" is sometimes in the lower part of a cds and at other times is used by itself or within a circle. Another article in this issue, by Tor Østlund, discusses letters from England to Norway during the period 1660-1875.

* S * C * C *

New Norway Price List

Northland Co. announces the publication of its new expanded net price list for Norway. This list is FREE on request to: Northland Co., Box 34, Verona, NJ 07044.



What's Happening in Finland

By Mike Hvidonov

Mikko Ossa's October 1992 issue of *KERÄILYUUTISET* opened with a brief editorial of the newly issued 1992-1993 LAPE which is the most completely detailed Finnish catalog. Published by the Peltonens of Hanko for generations it is a veritable encyclopedia of the Nation's philately. It covers every item related to philately from the pre-stamp era through booklets, mailing machine labels, telephone cards, etc. Save for a few pages, all the stamps are in color and evince respectable color reproduction. The total pages have increased to 520 plus cover. But . . . alas, it is printed in Finnish/Swedish only.

The Classic issues are, as usual, supervised by Mikko Ossa whose auction experience serves to make for consistently accurate price evaluations.

Price-wise, the advanced collector should have both LAPE and NORMA in the philatelic library since some price disparities occur upon occasion. I do not know the price of LAPE at this writing. When I come upon the figure I will report it in a subsequent column. Incidentally, LAPE will publish every second year rather than yearly.

Minor Price Adjustments

Mikko Ossa relays a few of the price alterations: 1856 . . . 5 and 10k. ovals and tête-bêche pairs rose slightly. 1860-1866 . . . Anticipated reductions in used *average* stamps 10-15%. 1875 . . . Some of the 4-figured stamps of 1875-1882 dropped to adjusted levels. In the modern area the Zeppelin stamps remained solid. The 1830/1930 imprint error escalated somewhat. Red Cross . . . these popular stamps remained status quo. 1937-1939 general issues dropped a tad.

Zepp Error on Letter

A pair of Zeppelin stamps with the

error changed hands in Switzerland at the beginning of summer. The letter had been sent from Helsinki to Stockholm. The auction attained 21,000 francs which relates to 70,000 FM or \$14,000.

A number of these 'error' letters have made the rounds recently; raising queries regarding the possibility of speculation. Two such covers are owned by Finns who collect this specialty but most of them are abroad, concludes Mr. Ossa.

A Great European Buy

A pre-philatelic letter, or pre-stamp, if one prefers, boasting a hard to acquire LAUKUS cyrillic cancellation that has not been seen in years fell under the hammer of a Swiss auctioneer for the ludicrous sum of 650 francs. The catalog value is 5000 FM or near \$1,000.00 USA. Mikko recalls that the letter came from a collection of architect PAUCHARD, which was broken up years ago.

(Editor's note: Happenstances such as this should teach collectors to auction material in the country of origin or through someone who knows or is willing to check out the value of auction material.)

The 1 Mark 1917 Stamp on Letter

Mr. Ossa responded to a phone call concerning this rarity from the year 1917. The inquirer wanted to know if the 1 mark, red and black stamp, is known canceled late in the year of its issue in 1917. The fee of 1 mark would signify that the cover had to have been insured for 30 pennies to make the correct rate. (I looked . . . to no avail!).

Finland's Post Offices

The number of P.O.'s selling stamps and associated material has been reduced to 950 stations.

Saarinen-type Forgeries



Fig. 1 — Oval Group Mystery

It is known that there are two types of forgeries: one to fool collectors and another to deprive one's government of their 'just and due'. The best known example is the 1901 emission of the 10 p. red stamp with a 20p. black overprint, perforation 12-1/2, which exists in plentiful quantities as loose stamps. Postal items are unknown. There are two other examples of 1921 Saarinen overprints forgeries. They are the 1-1/2 black imprints added to both the 25p and 50p blue stamps and are listed in the Handbook.

They can be discerned as forgeries by the overprint which is clearly 'greyer' in intensity as opposed to a strong black. Another exposing detail is that the ink imprint is not visible on the reverse side of the stamps. Typically, imprints from this period do transmigrate through the paper thickness to the back of the adhesive. Most known cancels are from WILBORG. The 25p. forgery is more common than the 50p. counterpart. To date no Postal item forgeries have been seen.

Jorma Leinonen's Forgery Collection

Mr. Leinonen's excellent forgery collection will be housed in the Finnish Philatelic Museum to serve for reference purposes.

An Oval Group Mystery

According to Mikko Ossa (the Sherlock Holmes) of Turku, the late Leo Linder, who was one of Finland's great philatelists, stated in his book on the 1856 Ovals, 'that a row of three plus an adjacent pair tied to a long narrow fragment was on view in the Finnish Postal Museum.' Mr. Ossa states that: "it never got there!" (see Figure 1). It is a shame that so fine an article was somehow misdirected?

President Jussi Tuori Abdicates

Jussi Tuori concluded that the Federation had usurped enough of his time and many long and arduous hours for a goodly period of service. Wisely, he terminated his responsibilities at the propitious moment having performed very well and (almost) tirelessly. I did view his efforts as the leader 'through the looking glass' and found no reason to doubt his dedication to philately and the Federation. Regrettably, no matter how proficiently one labors, there are always dissenters.

He is OK in my book . . . good luck, Jussi!

New President Pekka Taitto

I came to know of President Taitto whilst translating a complex Handbook for the Finnish Philatelic League which may be available by this year's end. Several Finns had informed me of his industrious and sound handling of problems. If he proves able to deal with multitudinous problems and some 'back-biting' he has arrived in the right place at the right time.

There weren't many applicants knocking down the door of the Federation offices begging for the job. The assignment requires class and honesty without the propensity to be a 'hard liner' when dealing with one's peers. Diplomacy and careful observation are critical assets. I believe that he has these merits and will be successful. When in Finland I will make it a point to meet with him and thank him for saving us from a possible hiring error that would have been terribly detrimental to Finland's philately.

I close with a hearty Good Luck Mr. Taitto! and from the Latin . . . 'Illegitimi Non Carborundum'. (My spelling could be shaky on the last, but the thought is sincere!)



Lindbergh Cover Addendum

Páll H. Asgeirsson sends a photocopy of a postal item related to the Lindbergh Greenland east coast cover shown in the February 1993 issue of the *Posthorn*. Illustrated above is an Icelandic postal card sent to Denmark via the Faroes from Vedel to his son Helge. The text is dated July 8, 1933 and there is a Fra Færøerne mark as well as a Copenhagen receiving strike. (You will remember that the Lindbergh cover was from Vedel to his wife. Vedel captained the *M/Sch Nordstjernen* which Lindberg visited while in Greenland and used to look for potential air landing sites.) Páll translates the text:

Inspectionship Nordstjernen

Reykjavík 7/8 1933

Dear Helge-boy,

Today you shall get a card from father. Now we are in Reykjavík Iceland, and tonight we will sail for Greenland. The weather has become quite calm and will be fun to see how things look in Greenland. I hope you are well.

Many greetings from father.

Many thanks to Páll for sending this item which is pretty neat by itself and establishes the existence of a correspondence we can fit the potentially unique

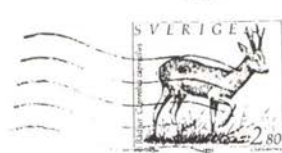
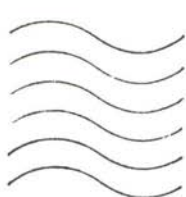
Lindbergh cover into.

[It does make one wonder when a man clearly states he is in Iceland and uses Iceland stationary but the clerk rubber stamps the card as being from the Faroes. Shouldn't it be "Fra Island"??]

*S*C*C*

New Swedish Cancellers?

Jay Smith sends these photocopies showing cancellers similar to those elsewhere in Europe but not noticed on Swedish items before. Are the Swedes buying new cancelling systems?



Stamp Survey

Vote For Your Favorite

In response to several letters, *The Posthorn* will conduct a stamp survey as part of its 50th anniversary issue. Please vote for:

- Best Design, stamp, 19th century
- Best Design, stamp, 20th century
- Best Design, set, 19th century
- Best Design, set, 20th century
- Favorite 19th century stamp
- Favorite 20th century stamp
- Favorite 19th century set
- Favorite 20th century set

Vote on any sheet of paper. Type of print — make it legible. Any Scandina-

vian area is eligible — though I'm not sure if Aunus has a chance. Think in terms of DWI, Greenland, Iceland, Faroes, Norway, Denmark, Sweden, Finland, Åland, and stuff like North Ingermanland or Spitzbergen locals.

Mail ballots to: John Lindholm, 2316 Lakeview Drive, Fergus Falls, MN 56537. Vote early. Election ends August 31st. Let's get a big sample. Results will be announced in the November 1993 *Posthorn* — our 50th anniversary issue.

* S * C * C *

A Sad Goodbye!

We are about to say goodbye to two old friends, two of Denmark's oldest stamp values: the five øre and ten øre values of the venerable wavy line design. From March 31 you can only buy these stamps at the Stamp Center.

It created quite a discussion when the latest stamp in the series, the five øre orange-red appeared on June 15, 1989 — especially when the five and ten øre coins disappeared from the scene. The explanation given was that a supplementary value was necessary to use other existing values.

The five and ten øre wavy line stamps first saw use, respectively, in June and July of 1912 in typography. The colors were green and rose. In 1921 there was a color change to brown and green and in 1930 to light green and bister-brown. All these stamps were printed by Thiele. In 1933 the P & T bought a new printing works from Goebles in Germany and started producing stamps by steel plate printing. The orange-yellow ten øre was the very first value to come off the machine. The first five øre in steel plate printing was issued October 15, 1938. And now — they are both gone!

* S * C * C *

Sweden Post Takes Credit Cards

If you've decided against taking out a standing order with the Swedish Post Office in the past because the American distributor requires a minimum of four stamps each and it's a pain paying in Swedish funds, you might want to know the Swedish Post now takes credit cards.

They've gone in big for "books" lately, as has the USPS. There was "Images of Sweden" and "Art in Sweden" and now a nature book is available. All are books with stamps mounted amidst the text like the familiar "Stamp Yearbook" format popular with several Scandinavian Post Offices.

If you want to credit card these further attempts at philatelic sales or open a standing order try:

Sweden Post
Stamps
S-981 84 Kiruna
Sweden

* S * C * C *

*Share your philatelic
knowledge with
beginning collectors*

Computerized 50 Year Index to Posthorn

By Reino Merikallio and Paul Helgesen

In 1984 the late Bob Gross, editor of the *Posthorn*, was the main force behind publication of a 40 YEAR INDEX TO THE POSTHORN which indexed *Posthorn* articles from 1943 to 1983 by country and alphabetically by title. Bob Gross praised Carl Werenskiold and Harry Wines of New York Chapter 7 for manually preparing earlier annual indexes and a 1972 Cumulative Index. Bob wrote in 1984 "Fortunately, we now have computers to store the information so that we can prepare our future annual and cumulative without those hours of work." Would that this had happened (see below)!

Ray Merikallio has suggested that a 50 YEAR INDEX TO THE POSTHORN be issued in 1994 for *Posthorn* articles from 1943 to 1993. This idea has met with universal approval. Ray and Paul Helgesen, SCC

Computer Coordinator, have therefore begun planning and designing a computerized 50 YEAR INDEX. The obvious approach would be to get Bob Gross's 1984 computer files and build on them for the 1994 index. However, after contacting innumerable SCCers who were active around 1984 no one knows where Bob's files are. If the reader knows where they are please contact Paul or Ray.

Merikallio and Halgesen guarantee that the cumulative index files for the 50 YEAR INDEX will be guarded around the clock so that the files for any subsequent two year indexes can be easily merged into the cumulative index data base in anticipation of a 60 YEAR INDEX TO THE POSTHORN in 2004.

Therefore the next best approach, but more time consuming, will be to use a scanner to scan the pages of the 1984

ICELAND SWEDEN

**LARGE
STOCK**
including
the . . .
RARITIES

*Send for my
FREE
PRICE LIST!*

KARL A. NORSTEN
Box 907, S-181 09
Lidingo, Sweden
Fax 011-46-8-731-0244

40 YEAR INDEX and the pair of two year indexes into computer scan files that would be converted by an optical character recognition (OCR) program into text files such as ASCII or Word Perfect. Additional software has to be purchased for the OCR program to handle the special Scandinavian characters.

The most important decision of all will be the type of word processing program or data base program to use for the 50 YEAR INDEX. The OCR text files (or possibly Bob Gross's files) would be imported into files of this program. Indexes for two other major Scandinavian philatelic publications have been built with the following word processing programs:

—The 40 year index for the Scandinavian Contact, which was published in 1992 by the Scandinavian Philatelic Society in Great Britain, was developed with a word processing program on an Amstrad computer. This 40 year index is currently being upgraded to Word Perfect 5.1 under DOS 5 by Peter and Jane Berry, the SPS

librarians.

—Paul Nelson has been using a Unix-based markup language word processor on a PC to produce annual Index Supplements for the 12 monthly issues of *Luren*. Thirteen Index Supplements have been produced from 1980 to 1992 as additions to a cumulative 11 YEAR LUREN INDEX published in 1979.

The goal for the 50 YEAR INDEX TO THE POSTHORN is to use a PC based data base program such as Paradox, Alpha FOUR, PC-File or Q&A. Data base programs permit easier maintenance and more flexible outputting of a cumulative index file. The data base program, which would have to handle the special Scandinavian characters, would be the same as that used for the Multi-Language Philatelic Dictionary discussed elsewhere in this *Posthorn* issue. Paul Helgesen and Ray Merikallio would appreciate readers' comments on which PC data base programs would be best suited for indexing *Posthorn* articles.

* S * C * C *

DO YOU COLLECT SCANDINAVIAN STAMPS & POSTAL HISTORY? ARE YOU A SPECIALIST?

WHAT IS A SCHIFF "ESPECIALLY FOR SPECIALISTS"® AUCTION?

It's an auction designed with YOU in mind. Whether you are a buyer or a seller — each specialized area of collectin is listed in a separate section, making it easier for BUYERS to locate lots of particular interest and for SELLERS to realize maximum exposure for their material.



CATALOGS	N. America Overseas	
	Address	Address
1 Year with Prices Realised	10.00	18.00
1 year Catalogs only	7.50	15.00
1 Catalog with realizations ..	1.50	2.50
1 Catalog Only	1.00	2.00

We invite you to consign individual stamps or covers, entire collections or estates — for unreserved Public Auction or Private Treaty Sale. WE ALSO PURCHASE OUT-RIGHT! Contact us first describing your material include your address and telephone numbers.

Jacques C. Schiff Jr., Inc.



195 MAIN STREET
RIDGEFIELD PARK, NJ, USA 07660
Phones (201) 641-5566 — From N.Y.C. 662-2777
Licensed & Bonded Auctioneers — Established 1947





Maritime Mail. An example of covers discussed in Harry Snarvold's new book. (The Bergen mark only one recorded for this period.)

Norwegian Letters to Foreign Destinations Until 1855

For many years there was a lack of important publications in connection with the Postal History of Norway. However, during the last 15-20 years, a growing field of literature on this subject has been published. Most of these publications have concentrated on the period from 1855 and onwards.

Harry Snarvold has previously given an excellent contribution to Norwegian reference literature through his publication "Norwegian Letters to Foreign Destinations 1855-1875" (1991).

Once again the author is presenting a complete new publication in English: "Norwegian Letters to Foreign Destinations until 1855": No doubt a solid book of reference to all philatelists who are interested in Norwegian mail abroad during the prestamp period of Norway.

Collectors of this theme in Norwegian philately will find information that will be of great help in analyzing covers with regard to transit marks, postal routes and rates. Understanding of the different postal conventions and the postal systems in various transit countries give vital information for a better knowledge of postal history in general.

It is in all respects a very valuable and excellent work that Harry Snarvold

is presenting, and I trust that the publication will be successfully accepted by philatelists both in Norway and internationally.

(Ed. Note: Copies available from the author at Harry Snarvold, Eneliden 11, S-43364 Partille, Sweden. The SCC Library should have a copy as well. Cost is SEK 550 — plus postage for the 126 page hardbound book illustrated in color. Having printed an article of Mr. Snarvold's in our November 1992 issue, I can tell you his original illustrations of covers are stunning.)

Postal History Society of Norway
—Arne Thune-Larsen

* S * C * C *

St. Louis Stamp Expo '93

St. Louis Stamp Expo '93 will be October 1-3, 1993 at the Frontenac Grand Hotel in St. Louis. There will be a 4,000 frame exhibition, 30 dealer bourse, Youth Rooms, and so forth. contact David Kols at Regency Stamps, 1177 N. Warson Road, St. Louis, MO 63132. Mr. Kols is a life member of the SCC.

* S * C * C *

1992 Treasurer's Report

Scandinavian Collectors Club Consolidated Report 1992

STAMP MART

Commissions rec'd	\$2,941.44
Expenses	<u>4,195.93</u>
Mart loss	1,704.49

LIBRARY

Income	356.32
Expenses	<u>836.26</u>
Library loss	479.94

POSTHORN

Advertising rec'd	3,050.87
Expenses	<u>9,008.28</u>
Posthorn cost.....	5,957.41

OTHER

Dues	14,681.00
Interest income.....	2,542.12
Other income.....	1,229.00
Library Index	2,040.33

Executive Sec.....	1,500.00
Ex. Sec. expenses.....	1,376.05
Other expenses.....	<u>750.69</u>
Other gain	12,785.05
1992 NET GAIN.....	4,643.21

* S * C * C *

*Ask a Friend to
Join SCC!*

Replacement SCC Membership Cards Now Available!!

If you are one of those who did not receive an SCC Membership Card for your wallet or purse; or you have a card that is battered and worn; you can now get a replacement by sending \$1.00 and an SASE to: Bob Lang, P.O. Box 125, Newark, DE 19715-0125.

SCANDINAVIA

I have more than 20 years experience
in the business
And contented customers
throughout the world

*Please send for a free copy of my monthly
auction catalog*

OLOF LINDER

Box 12163, S-102 24 Stockholm, Sweden

Fax no int. + 468 653 27 95

**SCC CHAPTER 13 TWENTY-SIXTH ANNUAL AUCTION
JUNE 29, 1993**

General and Specialized Scandinavia.

The Delaware chapter annually holds a small auction of Scandinavian stamps, covers and related philatelic material. We consider our auction to be a service to SCC members, and will send a complete catalog and pictures of many of the lots POSTPAID to anyone who sends us a note or postcard requesting it. Our address is: SCC CHAPTER 13, BOX 59, ROCKLAND, DE 19732.

There is no buyer's commission. but a small commission is charged to the sellers to cover auction costs and to promote Scandinavian philately.

All areas of Scandinavia are included in the sale, and there is a large section of ICELAND CANCELLATIONS. Here are some SAMPLE SELECTIONS FROM THE AUCTION. Catalog values are from the 1993 FACIT unless otherwise indicated.

LOT #		CAT VAL	START BID \$
DENMARK			
8 o 2	IVE (2 var) pair, each cxd #22 (Grenaa), "Pracht" (Kr2100)		110 P
9 C 4	(4), 4 mgns (3 very nice) on folded letter: Vedbyhoi to Kobenhavn, #1 cxl + clock cxl, attractive (Kr 200+)		45
10 C 7	(7) 4 mgns, FVF, tied to folded letter by #181 combo cxl, antique SILKEBERG on back, Barefoot (€ 35+)		25
13 o 120	(82) 5Kr red, wkmd crowns, good color, FVF (Kr 600)		40 P
14 o 120v2	(82 var) "KOBFNHAVNS" error, centrd T, just F (Kr3000)		135 P
15 o 121	(135) 5Kr red, few sl shortened perfs, VF (Kr 575)		35 P
16 o 191	(152) 27c on 38c orange, scarce value, FVF (Kr 375)		22 P
17 o 208	(171) 15c purple, bold star cancel Ch (1.), VF (DKr 500)		35 P
18 *	213v1 (C1 var) 10c "broken wing", gum cr, couple ragged perforations, FVF OG (Kr 400)		15
21 o 284v	(261var) double upper left frame var, FVF (Kr 300)		18
31	ESSAYS: Thorvaldsen, set of 3 lt brown, ng(as issued) VF		15 P
32	ESSAYS: 3 Diff Thorvaldsen, 1 brown, 2 red, VF		10
33	ESSAYS: Gruntvik church, 2 shades, VFNH AFA '86-'87 (Kr 325)		8
34 *	Aalborg local, C/R #35 pair,ng, bright clean pair, VF		7
35 *	Same, but block of 6, Fine		15
36 o	Collection Office Cxls, K1, K2, K3, nice copies (DKr 60)		5
37 o	Cancellations: 10 diff Taarbaek-type stars, KE'91 (DKr 415)		23
38 o	Cancellations: 205 Diff Faarveile-type stars,incl better		240
39 o	Cancellations 64 Diff mute stars, several nice strikes		50
40 o*	GROUP: 75 Railroad stamps, nearly all diff, above average		40
41 *	COLLECTION: 192 LOCALS incl some better ones, transfer types, few blox, a very few minor flaws, nice lot		200
ICELAND			
100 o	21 (22) 3a, used block of 4, cxl 4-7-1902, near VF (Kr1250)		58 P
101**	23 (8) 5a blue, parts of 4 wkms, pencil mk, Fine NH (Kr3000)		95 P
102 o	23 (8) same used, type B cxl, Fine (Kr3500)		120 P
103 *	36 (33A) sm prir ovpt, sl rnd UR crnr,sl toning,F OG (Kr3800)		100 P
104 *	42 (66) 40a ovptd I GILDI '02-'03, OG, nearly VF (Kr 110)		8
105 o	43 (67) 50a I GILDI '02-'03, bridge cxl, near VF (Kr 750)		68 P
106 o	44 (68) 100a I GILDI '02-'03, bridge cxl, near VF (Kr 450)		40 P
107 *	48 (49) 3a I GILDI '02-'03, no gum, nearly VF (Kr 750)		60 P
108 *	49v1(50b) 3a, inverted ovpt, just Fine, OG (Kr 100)		11 P
110 o	50 (51) 4a I GILDI, type B cxl, nearly VF (Kr 300)		30 P
111 *	50v1(51var) invtd ovpt,w. xprts mark, nearly VF (Kr 300)		38 P
112 *	51 (52) 5a I GILDI (black), Never Hinged, Fine (Kr2000)		180 P
113 *	51 (52) same, but very light hinged, F-VF (Kr1700)		170 P
114**	52 (53) 6a I GILDI (black), init on back, FVF NH! (Kr4400)		390 P
115 *	53v1(54a) 10a, inv ovpt, just Fine OG (Kr 125)		11 P
116 o	54 (55) 16a, bridge type cxl, Fine-Very Fine (Kr 300)		16

117	o	57	(58)	40a, light type B cxl, VF	(Kr 375)	25	P
118	o	58	(59)	50a I GILDI, bridge cxl, Superb centering	(Kr 450)	35	P
119	*	59v2(45a)	5a I GILDI inv ovpt, frame var UR, Fine OG	(Kr 100+)	12		
120	*	60v4	pair, one w/o ovpt, extra overprint on selvedge, some reinforced separations, sl toning, Fine	(Kr 225)	20	P	
121	*	62v1(48)	25a inverted red I GILDI, VF NH	(Kr 175)	25	P	
122**	64	(35)	horiz strip of 4, nearly VF and Never Hinged	(Kr 180)	11		
123	o	64-8(35-9)	4a-16a, used blocks of 4, F-VF as singles	(Kr 560)	42	P	
124	o	68	(39) 16a used block of 4, FVF as singles	(Kr 240)	18		
125	o	72	(43) 50a used block of 4, Very Fine as singles	(Kr 600)	48		
126	o	74	(44A) 2Kr, bridge cxl, nearly VF	(Kr 500)	35	P	
127	o	75	(44B) 5Kr, bridge cxl, Very Fine	(Kr1600)	165	P	
134	o	132v1	(116var) 10a green, var ME joined, Fine	(Kr 120)	7		
135	*	142	(126) 1Kr bicolor, VF OG	(Kr 600)	42	P	
136	*	144	(128) 5Kr blue/brown 4-block, paper bits on back, pinhead thin on 1 stamp, Fine+	(Kr1500)	40	P	
137	o	169v1	(145var) hook on M variety, VF	(Kr 50)	5		
138	*	179v	(158var) white dot under 25, 1 sh perf, FVF LH	(Kr 125)	7		
139	*	179	imperf pair, 3 nice mgns, close at top, just F	(Kr 160)	6		
140	*	187	imperf single, FVF	(Kr 350)	15		
143	C	237-9,	registered FDC w 1938 Xmas seal (not tied), cover creased, not affecting stamps, stamps VF	(Kr 400)	25		
144	C	265-7,	registered FDC, neat cover	(Kr 535)	30		
145	C	268-73,	registered FDC, Pingvellir commm cxl, cover creased, not affecting stamps, stamps VF	(Kr 800)	50		
153	*	TJ3	(03) 1873 4s green, usual rough perfs, FVF	(Kr 425)	20	P	
156	o	TJ3	(03) same, excellent SOM post-cxld copy, VF	(Kr 400)	35	P	
157	*	TJ15	(025) 3a I GILDI '02-'03, SCARCE, Fine+, LH	(Kr1800)	200	P	
158	*	TJ16v1(026a)	5a inv ovpt, Fine-Very Fine, OG	(Kr 90)	13		
159	*	TJ17	(027) 10a I GILDI '02-'03, Fine, LH	(Kr2500)	200		
160	o	TJ18	(028) 10a I GILDI, clear cxl, Fine+	(Kr 400)	25		
161	*	TJ19v3,TJ19	in pair!!, '03-'03 ovpt, FVF LH	(Kr 690+)	110	P	
162	*	TJ20v1(030a),	no first I var, cntrd LL, VG	(Kr 175)	20	P	
163**	TJ21a,TJ21b	(020 vars)	TJ21a is VLH, FVF VLH/NH	(Kr3500)	300	P	
164	*	TJ21v1	(020b var) inverted overprint, signed, FVF	(Kr4075)	500	P	
165	*	TJ21v2	(020b) 3a var, 2 perfs thinned, ow VF OG	(Kr 75)	9		
166	*	TJ22v1	(021b) 4a pair, invert I GILDI ovpt, Fine LH	(Kr 240+)	35	P	
167	*	TJ24v2	(023b) 10a inverted I GILDI, superb, OG	(Kr 100)	16		
168**	TJ24v3,TJ24,	L only error	paired w. normal, Fine+ NH	(Kr 135+)	17	P	
169	*	TJ24v6	(023d) 10a, apostrophe error, Fine OG	(Kr 400)	55	P	
170	o	TJ33I,33II	(050,050a) Cameo off. varieties, F-VF	(Kr 750)	48	P	
171	o	TJ54	(051) 5Kr Cameo off., bridge cxl, FVF	(Kr1600)	125	P	
172	o	TJ55v1	(032var) var ME joined, sh LL perf, Fine+	(Kr 150)	8		
173	*	TJ62v(056var),	no dot on J, very sl rough perfs, VF0G	(Kr 200)	15		

NORWAY

267	o	1	(1) 4 broad mgns, pen cxl removed, VF	(Kr1000)	65	P	
268	o	2	(2) 2s, clear BERGEN 14 2 1865 cds, VF	(Kr1300)	85	P	
269	o	6	(6) 2s, bold SON CHRISTIANA 1 7 1868 cxl, near VF	(Kr1500)	65	P	
270	o	7	(7) 3s, lilac-grey, clean, few rough perfs, F+	(Kr3000)	75	P	
271	o	13a,13b	(13x2) 3s, 2 shades, cds, just Fine	(Kr2950)	110	P	
272	o	15b	(15a) 8s rose, clear printing, 2 sp, just F	(Kr3000)	120	P	
273**	17c	(17) 2s	ultramarine 4-blk, fresh, FVF NH	(Kr 875)	40	P	
274	o	21	(21) 7s w "CHRISTI() 29 6 87 cds, VF	(Kr 500)	40	P	
275	o	90	(64) 1Kr, small pearls, cds 20 IV 10, VF	(Kr 250)	22	P	
276	o	92	(66) 2Kr, PP cxl, Very Fine	(Kr1000)	55	P	
277	*	151-7	(104-110) bear set cpl, FVF OG	(Kr 360)	26		
278	*	181-3	(B1-3) first cape set cpl, nearly VF, LH	(Kr 750)	25	P	
279**	277	(218) 50c,	watermarked, V ovpt, Superb NH	(Kr2500)	190	P	

Send EARLY for your copy of the complete catalog. We think you will find it an interesting auction.

Changing Your Address?? NOTIFY
Bob Lang, SCC
P.O. Box 125 — Newark, DE 19715

The Scandinavian Collectors Club

—*Founded, Nov. 25, 1935*—

Elected Officers

- PRESIDENT: Dr. Roger G. Schnell, 4800 N.E. 20th Terrace, Ft. Lauderdale, FL 33308
 VICE PRESIDENT: Robert J. Fashingbauer, P.O. Box 1, Techy, IL 60082-0001
 SECRETARY: Raymond Erickson, 5427 Delia Way, Livermore, CA 94550
 TREASURER: Jared H. Richter, 1353 Plum St., San Diego, CA 92106-2549
 DIRECTORS-AT-LARGE: Chris McGregor, 6312 Camarvon St., Vancouver, BC Canada V6N 1K3
 Ronald B. Collin, P.O. Box 63, River Grove, IL 60171
 Eric Roberts, P.O. Box 460201 Galleria Sta., Houston, TX 77056
 IMMEDIATE PAST PRES.: Jared H. Richter, 1353 Plum St., San Diego, CA 92106-2549

Appointed Officers

- EXECUTIVE SECRETARY: Robert W. Lang, P.O. Box 125, Newark, DE 19715-0125
 HISTORIAN: Dr. Frank N. Schubert, 8505 Cherry Valley Ln, Alexandria, VA 22309
 LIBRARIAN: Dr. W. E. Melberg, Box 134, Allenton, WI 53002
 STAMP MART MANAGER: Eric Roberts, P.O. Box 460201 Galleria Sta., Houston, TX 77056
 APS REPRESENTATIVE: Jared H. Richter, 1353 Plum St., San Diego, CA 92106-2549
 PUBLICITY CHAIRMAN: Marvin D. Hunewell, P.O. Box 23959, St. Louis, MO 63119
 BY-LAWS CHAIRMAN: Chris McGregor, 6312 Camarvon St., Vancouver, BC Canada V6N 1K3
 AWARDS CHAIRMAN: Ron Collin, PO Box 63, River Grove, IL 60171
 LITERATURE PROMOTION: Alan Warren, P.O. Box 17124, Philadelphia, PA 19105

Member Services Coordinators

- CHAPTER COORDINATOR: Reino Merikallio, 388 West Road, New Canaan, CT 06840
 EXHIBITION COORDINATOR: Dr. Jeffrey N. Crown, 850 Flagler, Dr., Gaithersburg, MD 20878-1946
 COMPUTER COORDIN.: Paul Helgesen 34 Plymouth Road, White Plains, NY 10603-1129

Staff, *The Posthorn*

- POSTHORN EDITOR: John Lindholm, 2316 Lakeview Dr., Fergus Falls, MN 56537
 BUSINESS MANAGER: J.R. "Jack" Day, 2109 Skycrest Drive #4, Walnut Creek, CA 94595

Nation Editors & Resident Associate Editors

- POSTHORN COLUMNIST: Alan Warren, P.O. Box 17124, Phila., PA 19105
 CHAPTER NEWS EDITOR: Reino Merikallio, 388 West Road, New Canaan, CT 06840
 D.W.I. EDITOR: Dr. Roger G. Schnell, 4800 N.E. 20th Terrace, Ft. Lauderdale, FL 33308
 DENMARK & FAROES
 & GREENLAND EDITOR: Dr. Dan Laursen, 4901 East Eastland, Tucson, AZ 85711
 FINLAND EDITOR: Mike E. Hvidonov, 4 Dwight Lane, Great Neck, L.I., NY 11024
 ICELAND EDITOR: Bryan R.R. Whipple, 3093 Jaylee Dr., Santa Rosa, CA 95404
 RESIDENT ASSOC.: Sigurdur H. Thorsteinson, P.O. Box 26, IS-222, Hafnarfirdi, Iceland
 NORWAY EDITOR: Roe C. Blume, 10 Chestnut St., Wilmington, DE 19810
 SWEDEN EDITOR: Paul A. Bergman, 875 Kenoza St., Haverhill, MA 01830
 FORGERY EDITOR: Erik Paaskesen, Sneppenlaan 33, 1980-Tervuren, Belgium

SCC Study Groups

- DWI STUDY UNIT: Dr. Roger G. Schnell, Chairman (see address above)
 REVENUES: Tim McRee, Box 388, Claremont, NC 28610
 SWEDEN - RING TYPE
 STAMPS: George A. Kuhhorn, P.O. Box 4486, Emerald Isle, NC 28594



President's Letter

By Dr. Roger G. Schnell, MD

I would like to take this opportunity to again invite all SCC members to Florida in November for the SCC national meeting. There will be no snow, but we will be meeting in a delightful spot, with all kinds of activities for the family. The convention site is immediately adjacent to the hotel as well as being in walking distance to the middle of downtown Orlando. We have extended a special invitation to our Scandinavian friends and hope many will join us. There will be several special program surprises, so come join the fun.

There are two books that I would like to recommend to any one trying to enhance his philatelic library. They were written by Ernest H. Wise and entitled "Stamps of Denmark, Iceland and Norway," and "Stamps of Sweden and Finland — The Earlier Issues" published by Heinemann in London, 1975. Occasionally they are available in auctions or can be purchased from dealers. They are well written, provide a treasure trove of information, and are worth the money.

The last six months have been interesting times for US currency, and particularly as it relates to that of Sweden, Denmark and Norway. Some of the Scandinavian currencies have fallen almost 1/3 in relation to the dollar. Secondly, the speculation fever that had been present in Scandinavia several years ago has passed. Thus, in today's market one can purchase classic material for less than 40% compared to several years ago. For example, this is particularly true of Norway #1. A superb used copy can be purchased for under \$100 today. In addition, the American economy is recovering faster than that of Europe, further opening the window of opportunity for the discriminating collector.

The membership drive which was fueled by the offer of free Scandinavian stamps has been a great success. However, the executive director needs further donations of your duplicates to continue the program. Please keep those stamps coming to Bob Lang. To further promote the SCC the governing fathers have approved giving a

Who to Contact?

To become a member of SCC To pay dues To change address	Executive Secretary
To place ads, make payments or rate inquiries	Business Manager
To submit articles or ideas General articles Individual country articles	Editor, <i>The Posthorn</i> Nation Editors
To form a new chapter To get help for exhibiting To get help using computers	Chapter Coordinator Exhibition Coordinator Computer Coordinator

FREE 1 year membership to any member that signs up 5 new collectors in a 1 year interval. If anyone is a real "go getter," we are offering a free life membership for signing up 25 new collectors. I think this is a GREAT DEAL.

As a further bonus to members, the SCC will be publishing a supplement in November in addition to the regular *Posthorn* issue. This will be to commemorate 50 years of the *Posthorn*. The editor is also looking at a manuscript of unpublished philatelic material that we hope to serialize.

Keep "tuned in;" for exciting things are happening in the SCC.

* S * C * C *



News from the Home Office

By Bob Lang

The first quarter was outstanding for recruiting new SCC members. Please welcome 24 new compatriots to our family! And as I write this I have three more applications to process, but these arrived just a few days into the 2nd quarter. Thanks to all who sponsored new members and to the cadre of people who supported our membership campaign with donations of stamps, time and talent! We should see a continuation of this trend for a few more weeks because inquiries are still being received. Special plaudits go to Marv Hunewell, Al Gruber and Doc Melberg! Also, thanks go to Mike Hvidonov and Roe Blume for last minute stamp donations.

There is one disturbing note however, and that is that 85 of our flock have not responded to a second notice to pay their 1993 dues. I hope it's just an oversight? There are several prominent names on this list, many of whom are active in chapter activities. You know who you are; and we look forward to hearing from you soon!

I have met many of you in my recent travels and hope to see many more at some of our upcoming events. By the time you read this the Mega Event in NYC will be history and hopefully the booth and meeting that our NY and North Jersey chapters are planning will find many of you stopping by to say "hello." In addition, Chapter 4 had a presence at MILCOPEX, Chapter 23 at Fla West Coast Stamp Expo, Chapter 13 at DELPEX, Chapter 21 at WESTPEX (site of our '94 Annual Meeting) and several other chapters will be touting SCC at upcoming shows in Boston, Washington, Houston, Chicago and Los Angeles, to name a few. Of course, all SCC'ers will be looking forward to our Annual Meeting and Gathering of the Clan at FLOREX '93 in Orlando, the first weekend in November. I have a few Prospectuses for those of you interested in exhibiting. We have 100 frames reserved for SCC, so let's fill them up! Chapter 13 has challenged Chapter 23 to a one-frame contest! Any other chapters interested?

In addition, I am working on a plan to recognize all our members who have been with SCC for 50 years or more! Our "Half-Century Heroes & Heroines." Their dedication deserves to be recognized! We also want to form a "Quarter Century Club," for members who have been on the rolls for 25 years or more. I hope as many honorees as possible can be present at FLOREX; it should be quite a celebration. And to top it off, The POSTHORN will be 50 years old in November! Look for more about this gala event in the August PH.

Guess I've used up my allotted space so I'll sign off for now. Keep those new memberships coming! And I hope I'll see you one of these days soon! Cheers!!

Stamp Mart

By Eric Roberts, SCC Mart Manager

We now have four individual circuits operating with ONLY eleven members participating. We continue to encourage all interested SCC members from the United States to submit their requests for Stamp Mart circuits. See the November 1992 *Posthorn* for further details.

A new shipment of blank "blue cover" Mart books has been received. They are slightly smaller than the previous blue books with a changed format. They still contain 16 pages with spaces for 192 stamps. This slightly smaller size allows the Mart to continue to offer the blank "blue" books at 10 for \$5 postpaid.

We Need

We need perfins and locals from all countries except Denmark. We also need railroads from all countries including Denmark.

We still need clean readable single ring cancels on Norway 10 øre red posthorns. We also have requests for Danish bi-colors and Norwegian 20 mm posthorns.

Available

A nice book of Danish revenues was recently entered in the Mart. We also have several books containing booklets of Denmark, Sweden, and Norway. Our request in the last issue of *Posthorn* brought several books of used and unused Postal Stationery from Finland, Norway, and Denmark.

Mart address is: Eric Roberts, P.O. Box 460201, Houston, TX 77056. Telephone 713-963-0485 evenings or 713-575-5255 days.

* S * C * C *



Library News

Dr. W. E. Melberg, SCC Librarian

Facit Förlag has again come through with another donation, The *ORTSTÄMPLER* book. It can be purchased from Subway Stamps of NYC. The newest Danish study, *4 SKILLING 1864*, also a donation, is available from the København Philatelist Klub, P.O. Box 3, DK 1001, København, Denmark for approximately \$50.00 and Harry Snarvold's book is available from him directly. I can help you order any of these new acquisitions. We need new slide programs, especially Swedish. There are some good collections among our members that would be great to show. Please try to have transparencies made up of your material and share it with the rest of us. Many of our members have used our slide programs to lure new members into the SCC by showing them at local stamp meetings. **The Library will be closed from the middle of June to the middle of July.**

Library Donations — January 1, 1993 to March 15, 1993

Cash: Dennis Abel, Howard Felber, Ole Hellsten, Marvin Hunewell, Roger Kirst, Robert Mason, Brian Wallas and Arnold Werner.

Publications:**Ronald Collin**

"File of Iceland articles." 200+ pp. Personal file of the donor.

"File of articles about Aunus, Karelia and North Ingermanland." 20pp. Personal file of the donor.

FACIT FÖRLAGS AB

FACIT POSTAL 1993 - ORTSTÄMPLAR OCH POSTHISTORIA. 384pp. Swedish place name cancellation book, thoroughly revised and up-dated. Includes railroad and steamship markings along with postal rate charts. This new edition is presented in a larger format, similar to the annual FACIT catalogs, making the contents much easier to read. The prephilately section has been completely reorganized.

Ole Hellsten

SKILLING - 1977-79 and 1983-84. Two bound volumes of this monthly Danish Philatelic Journal.

Kjøbenhavns Philatelist Klub

4 SKILLING 1864. Lasse Nielsen. 1992. 200 pp. A detailed study of the Danish Royal Emblems 4 skilling issue of 1864. Everything that is known about this stamp is to be found in this publication. A must book for the student of Danish philately. It contains color reprints of all twelve printings, production numbers and a complete plating scheme. Summaries in English and German. Hardbound!

W. E. Melberg

T. F. THOMSEN COLLECTION OF FAROE & ICELAND COVERS. Skovgaard Auction Catalog. 11/90. 104pp. Includes two Icelandic covers that created a PH article. (8/91).

SVEND YORT COLLECTION. Robson Lowe Auction Catalog. 3/81/82pp.

ENGELLAU COLLECTION. Corinphila Auction Catalog. 6/81. 168pp.

Harry Snarvold

NORWEGIAN LETTERS TO FOREIGN DESTINATIONS UNTIL 1855. Harry Snarvold. 1992. 126pp. Much postal historical information. Appendix illustrates various postal markings from many countries that are found on the covers. Worth a look for any philatelist. Companion to NOR B 121 E.

Alan Warren

NORDIA 92 KATALOG. Contains the following articles:

"Forsendelser til Danmark o. 1900 med 24 øre i efterporto." N. Klottrup. 4pp.

"Om Finlands stämpelmärken." B. Saarinen. 3pp.

"Island - Tollur - forløpere." O. Eliasson. 6pp.

"Poststemplene fra Christianssand." P-C. Ånensen. 15pp.

"Stockholms första postkontor och tidiga posthistoria." G. Joos. 4pp.

"Kjevik Feltpoståpneri." T. Larsson-Fedde. 4pp.

NORDIA 93 BULLETIN 2. Contains the following articles:

"Blad ur det självständiga Finlands historia." 10pp.

"Ryska märken för Finlands utrikespost 1891-1918." K. Hellman. 9pp. English translation by Hvidonovs.

NORDIA 92 PALMARES LISTING. 24pp.

Purchases:

HÅNDBOK OVER NORGES FRIMERKER. BIND VII. "20 mm. UTGAVEN" 5. Trykningsperiode 1892-1893. Central Printing Office. F. C. Moldenhauer, Editor, 1992. 212pp. Study of Posthorn emissions. This book was purchased at a substantial savings due to the generosity of the editor.

* S * C * C *

Support our Advertisers!

Computerized Multi-Language Scandinavian Philatelic Dictionary

Most Scandinavian stamp catalogs include dictionaries that list a small number of philatelic terms in several languages in tabular format. There are also several full scale Scandinavian philatelic dictionaries organized in a comparable format. These dictionaries have a variety of shortcomings:

—The dictionaries in stamp catalogs have too few terms, generally only 200 to 300.

—There are too few non-philatelic adjectives, adverbs, nouns, verbs and prepositions that frequently occur in combination with philatelic terms.

—One or more of the following eight major languages is missing:

Scandinavian		Other
Danish	Norwegian	English
Finnish	Swedish	French
Icelandic		German

—Separate dictionary listings, sorted on each of the above languages, are not available. Often there will be a sort for only one language.

—There are no descriptions of the grammar and structure of each language.

Possible Computerized SCC/SPF

Multi Language-Philatelic Dictionary

The SCC could team up with the Scandinavian Philatelic Foundation to design, develop and publish a computerized multi-language Scandinavian philatelic dictionary that would eliminate the above shortcomings. Full scale dictionaries could be published for each of the eight languages, sorted on the word spellings of the particular language. Each dictionary would also contain a description of the grammar and structure of the language. There has been a very positive response to such a dictionary.

The dictionary would be implemented with a PC data base program. Each data base record would represent a single word or a multi-word item. Each record would have eight fields, one for each language, that contains the spelling in the particular language of the word or item defined by the record. The data base program, which would have to handle the special Scandinavian characters, would be the same as that used for the FIFTY YEAR INDEX TO THE POSTHORN discussed elsewhere in this *Posthorn* issue.

The data base would be developed in two stages. In the first stage SCC/SPF volunteers would enter as many words/items as possible into the English fields of the data base records. In the second stage the data base would be passed successively to data entry volunteers for each of the other seven languages. These volunteers would enter into the record fields, for their language, the spellings for each of the SCC/SPF English words/items. The volunteers would also add words/items that were entered by the SCC/SPF volunteers.

Each of the seven volunteer groups could be controlled by a philatelic society or group associated with the particular language/country. The SCC/SPF Scandinavian philatelic dictionary could therefore be a worldwide joint effort by Scandinavian philatelists.

I would appreciate readers' comments on which PC data base programs would be best suited for a multi-language philatelic dictionary. The August 1993 issue of *The Posthorn* will describe further progress, including the database program chosen and the formats of the data base records, the inputs and the outputs.

—Reino Merikallio



Chapter News

By Reino Merikallio

Chicago Chapter 4 News

In December we lost a good and faithful member, Werner Reis. He had been on the disabled list, suffering from a series of strokes, for several years, yet he managed to attend most of our gatherings. His enthusiasm and humor will be missed.

During the January and February meetings we sorted Scandinavian kiloware and made up packets to hand out to children at stamp shows. We had an SCC courtesy table at MILCOPEX 93 where the afore-mentioned stamp packets and some excess *Posthorns* were handed out. We managed to sign up one new member and have several good prospects. Is there a Milwaukee Chapter in the future? The annual Wisconsin picnic is slated for July 25, 1993. If you are in the neighborhood drop in on us for a good time.

New England Chapter 5 News

At the March meeting Wayne Rindone showed some more of the interesting slides recently acquired by the chapter. In April Jim Bartlett spoke on special Iceland cancels. PHILATELIC SHOW '93 was held in Buxborough from April 30 through May 2. Chapter 5 operated a SCC booth as usual.

ASDA Mega-Event in New York City Features SCC Booth and Regional Luncheon Meeting

The ASDA Postage Stamp Mega-Event, held in New York City on May 5-9 at the Jacob Javits Convention Center, featured a SCC Booth and a SCC Regional Luncheon Meeting sponsored by SCC New York Chapter 7. Chapter 7 member Dr. Donald Halpern, former SCC President, gave two slide talks on "Swedish Postal History" using SCC Library slide show A/V #1. There were over 100 stamp dealers and over 300 exhibit frames in a world class exhibit hall.

The ASDA plans to sponsor two Mega-Events annually and will invest significant resources to make them major events. The New York Collectors Club and the Philatelic Foundation are working with the ASDA. SCC New York Chapter 7 will participate in the Mega-Events by sponsoring a SCC booth, SCC regional luncheon meetings and SCC slide talks. SCC chapters and members in the Northeast will be encouraged to attend the Mega-Events, particularly on Saturday when there will usually be a SCC Regional Luncheon Meeting. Chapter 7 hopes that Scandinavian philatelists will enter numerous exhibits.

The next Mega-Event will be on October 27-31 which is a week before FLOREX 93 in Orlando where the 1993 SCC Annual Meeting will be held. SCC New York Chapter 7 will participate again. An exhibitor's prospectus for the October Mega-Event can be obtained from: ASDA, 3 School St., Suite 205 Glen Cove, NY 11542.

Delaware Chapter 13 Challenges Florida West Coast Chapter 23

SCC Delaware Chapter 13 has challenged SCC Florida West Coast Chapter 23 to an inter-chapter contest for the best single frame exhibit at FLOREX '93, which will be the setting for the 1993 SCC Annual Meeting in November. The winner will earn the SCC Chapter Award for the Annual Meeting as described on page 13 of the 1989 SCC Members Handbook. The following rules have been proposed:

- Any Scandinavian philatelic area may be selected
- At least five members should supply at least a minimum of one page

- No weight will be given to appearance, i.e. print, paper, etc.
 - Subject matter may be confidential until the show
 - The Florida chapter will arrange entry details with the show committee
- The Florida West Coast chapter has accepted the challenge.

* S * C * C *

SCC Chapters — Meeting Times/Places and Contact Address

4. CHICAGO: 4th Thursday (except July and August) at Golden Flame, 6417 W Higgins. MAILING ADDRESS: Anders Melberg, 9123 Stevenson Dr, Des Plaines, IL 60016

5. NEW ENGLAND: 1st Thursday at Cardinal Spellman Museum, Regis College, 235 Wellesley Street, Weston, MA. MAILING ADDRESS: Wayne Rindone, PO Box 276, Newtonville, MA 02160

7. NEW YORK: 2nd Wednesday (except July and August) at The Collectors Club, 26 E 35th St. MAILING ADDRESS: George Ganim Jr, c/o Sydney & Ganim, 122 E 42 St, NY, NY 10168

9. NORTHERN NEW JERSEY: 3rd Wednesday at members' homes. MAILING ADDRESS: Warren J. Grosjean, 32 Juniper Rd, Wayne, NJ 07470

12. WASHINGTON, DC: Meets at major stamp shows throughout year. MAILING ADDRESS: Dr. Jeffrey Crown, 850 Flagler Dr, Gaithersburg, MD 20878

13. DELAWARE: Last Tuesday at members' homes. MAILING ADDRESS: Robert D. Lipscomb, PO Box 59, Rockland, DE 19732

14. TWIN CITIES: 2nd Thursday (except July and August) at Coffman Union, U. Minnesota, Minneapolis. ADDRESS: Ross Olson, PO Box 23377, Richfield, MN 55423

15. ROCHESTER: 1st Monday at Robert Gustafson's home. MAILING ADDRESS: Robert Gustafson, 877 Helendale Rd, Rochester, NY 14609

17. SOUTHERN CALIFORNIA: 2nd Tuesday at Union Federal Bldg, 13300 Ventura Blvd, Sherman Oaks. MAILING ADDRESS: Paul Nelson, PO Box 310, Claremont, CA 91711

21. GOLDEN GATE: Meets at major stamp shows throughout year. MAILING ADDRESS: Thomas Olson, 4 Woodmont Court, Berkeley, CA 94708

22. HOUSTON: 1st Tuesday evening of even numbered months at law office of George Sellnau; varying Sunday afternoons of odd numbered months at stamp dealer shop of Mary Jane Menzel. MAILING ADDRESS: Eric Roberts, PO Box 460201, Houston, TX 77056

23. FLORIDA WEST COAST: 3rd Monday at Poseidon Restaurant, 2370 US 19 North, Clearwater. MAILING ADDRESS: Warren Lange, 1351 Normandy Blvd, Holiday, FL 34691

24. WINNIPEG: 2nd and 4th Wednesdays at Scandinavian Cultural Centre, 764 Erin Street. MAILING ADDRESS: Glenn Hansen, 222 Burrin Avenue, Winnipeg, MB R2V 1E4

25. TUCSON: 4th Tuesday (except July and August) at members' homes. MAILING ADDRESS: Jack F. Schmidt, 805 W. Hermosa Pl, Green Valley, AZ 85614

Chapter Coordinantor: Reino Merikallio, 388 West Rd, New Canaan, CT 06840

* S * C * C *

Postal Covers

ESTABLISHED 1972

MAIL BID SALES * * COVERS OF THE WORLD

19th & 20th Century Postal History — Topical & Thematic including Military — Maritime — Railroad — Air Mail — FDC's — Cinderella — Red Cross — Judaica — Expositions — Sports and Olympics — Postal Stationery — Picture Postcards and so much more!

ALSO: Listing of over 200 US & Foreign Catalogs and Handbooks many at DISCOUNT PRICES, including hard to get imports.

FOR RICHLY ILLUSTRATED CATALOG SEND \$1.00 to:
THEO VAN DAM — P.O. Box 8809 — Anaheim, CA 92812

Editor's Notes

Congratulations to Mike Hvidonov on the recognition he has received from his peers as well as thanks for his consistent quality contributions to the *Posthorn*.

Congratulations and thanks to Wade Beery. As a fledgling member of SCC I spent good times around a table at Chicago Chapter #4 meetings looking through mart books and talking with friends. Wade made this possible.

A note about Member to Member ads. If you are not a dealer, these should be mailed to me. Jack Day handles the business end of ads. If you're getting an ad free — send it right along to me.

I hope you enjoy this issue of the *Posthorn*.

Membership Report

Membership Statistics for the Quarter Ended March 31, 1993

New Members

- | | | |
|------|--|-------------------|
| 3433 | WILLIAMS, ANDREW M., 8 Charles Road, Linthicum, MD 21090
Iceland, Canada, United States | By: Harris 1516 |
| 3434 | GREAVES, GRANT, 2804 N. Boyd, Fresno, CA 93703
Used Scandinavia | By: Birdsall 1326 |
| 3435 | NORSTEN, CARL A., Box 907, S-18109 Lidingö, Sweden
Sweden Classics & coils, Iceland Classics | By: Day 1028 |
| 3436 | BERGENDAHL, THOMAS A., 143 Ayer Road, Harvard, MA 01451
Norway | By: Rindone L-36 |
| 3437 | WALLAS, BRIAN, 3 Westdown Rd., Seaford, East Sussex, U.K. BN25 2LA
Finland Classics, Irish & Sussex Postal History | By: Lang 1095 |
| 3438 | HUBBARD, A. PAULL, 808 W. Broad St., Richmond, VA 23220
Finland, Denmark, Sweden, Norway, Outlands | By: Birdsall 1326 |
| 3439 | BEWLEY, DAVID, 287 McLeod St., Ottawa, Ontario, Canada K2P 1A1
Unknown at this time | By: Richter L-13 |
| 3440 | PETTIGREW JR, JOSEPH J., 2003 E. Indian Head Dr., Tallahassee, FL 32301
Iceland, Greenland, Falkland Islands | By: Melberg 1678 |
| 3441 | DE GROOT, PETER, P.O. Box 57, Hilton Beach, Ontario, Canada P0R 1G0
Greenland, Newfoundland, St. Pierre & Miquelon | By: Sparks 3083 |
| 3442 | RASMUSSEN, KARL, 81 Abbotsford Cir., Winnepeg, Manitoba, Canada R2M 2S6
Denmark, Norway, Sweden, Finland/Åland, Iceland | By: Hansen 2298 |
| 3443 | ST CLAIR, RICHARD C., 781 Smoerville Ave. Apt. 2, Somerville, MA 02143
Sweden, Norway, Denmark, Iceland, Balkans, etc. | By: Lang 1095 |

- 3444 BRAATEN, RICHARD F., 2039 S. Logan St., Denver, CO 80210
Scandinavia, Norway, US/Scandinavian Relations By: Melberg 1678
- 3445 NELSON, JAMES A., 1084 Brookview Ave., Westlake Village, CA 91361
Norway, Early Sweden By: Koplowitz 0925
- 3446 ILLMAN, MRS. MARJORIE K., 2800 E. Marrowstone Rd., Nordland, WA 98358
Norway, Scandinavia, Topicals (Native Dress) By: Hunewell 1561
- 3447 DAHLSTROM, HARRY A., 4277 Fair Oaks Drive, Columbus, OH 43214
Scandinavia, United States By: Melberg 1678
- 3448 MANNO, MARK, 123 Casho Mill Rd., Newark, DE 19711
Iceland, Greenland, Faroes, G. B., Canada, U.S. By: Smith 2196
- 3449 TIEGEN, RICHARD C., 333 Old Mill Rd, Space 255, Santa Barbara, CA 93110
Scandinavia, United States By: Hunewell 1561
- 3450 AGNACIAN, GEORGE N., 5120 Willow Leaf Dr., Sarasota, FL 34241
Scandinavia, Armenia, Swiss, Olympics, Tennis/Golf, etc. By: Lang 1095
- 3451 WILSON, ROBERT W., 4521 Clyde St., Virginia Beach, VA 23455-2835
Denmark, Finland, Norway, Sweden, US, Canada, Britain By: Lang 1095
- 3452 STONE, MICHAEL J., 130 Spring Road, Orinda, CA 94563
Scandinavia, Germany, France, Italy, Netherlands By: Olson 1601
- 3453 MOSKAL, GENE, 620 Walnut Lane, Elk Grove Village, IL 60007
Scandinavia, British Empire, Worldwide By: Gudmundson 0945
- 3454 VON STROKIRCH, 167 Humphries Rd., Frankston 3199, Victoria, Australia
Iceland & DWI Postal History, Stationery & Postmarks By: Todd 1760
- 3455 DAHILL, LOISELLE, 101040 Pauline Highway, Prineville, OR 97754
Norway, Canada, US Commemoratives By: Hunewell 1561
- 3456 LUMSDEN, HAROLD A., RR #2 Guysborough, Guy's Co., N.S., Canada B0H 1N0
Finland, Iceland, Latvia, Russia (Civil War Holdouts) By: Land 1095
- Members Reinstated**
- 3225 RUDD, LAUREN, 601 N. Eutaw St. #17, Baltimore, MD 21201

Specialized Scandinavia

We're into our third decade of helping to build collections through our monthly lists of Scandinavian specialty material: covers, booklets, locals, stationery, seals, literature . . . and even stamps.

So if you're looking for such things as Kenttposti covers, "FERIE" overprints, the Porkere mute cancel on cover, Gentofte Grølandskomite seals, Adams Expres items, Goteborg stationery, or Åland special postmarks, we could be your source.

In other words, if you haven't been hearing from us recently, let us hear from you. You'll really enjoy our lists (we're told they make interesting reading) and perhaps will find some things you need . . . at pleasingly reasonable prices.

Lizabeth Stamp Company

P.O. Box 321

Bloomsburg, PA 17815

Members Deceased

- 0294 ALDEN, HENRY - Member since 1946
 2466 HELBERG, WESLEY A. - Member since 1980
 1470 HILL, VERNON R. - Member since 1970
 2698 MURPHY, JOSEPH A. - Member since 1982
 L-58 TURNER, JOHN R. - Member since 1966

Members Dropped

- 3237 GIBEAULT, DR. ROBERT - Member since 1989
 2796 IMPAGLIAZZO, DR. JOHN - Member since 1984
 3386 ODERVANG, RONNY S. - Member since 1992

Resignations

- 3341 FILLIPS, ROBERT - Member since 1991
 3281 PALLAVICINI, JOSE - Member since 1990
 1818 SANNE, KARL ULRIK - Member since 1974

Change of Address

- 2962 BJORK, TORBJORN, 13602 N. 44th St., Phoenix, AZ 85032
 2074 FRAAS, L/C G. RICHARD 3935 Stockton Loop, Albuquerque, NM 87118
 3166 ROSMAN, HYMAN, P.O. Box 1171, Somerset, PA 15501
 1552 ALLEMAN, JOHN C., 204 W. 300 N., Salt Lake City, UT 84103
 3347 BUREGA, PAUL M., 16 Aldgate Crescent, Nepean, Ontario, K2J 2G4 Canada
 3367 GIBLER, DR. JOHN W., 4 Fabulosa Dr #41, Hot Springs Village, AR 71909
 1738 RASMUSSEN, HERBERT A., 316 Stanley Ave., Medford, OR 97504
 2407 SESSA, RICHARD F., 52-35 66th St., Mespah, NY 11378
 3107 HOLT, ROBERT E., 14702 41st Ave. Ct. N.W., Gig Harbor, WA 98332
 2324 TOMER, KENNETH B., 207 Langston Mill Ct., Raleigh, NC 27606
 2462 CARBIS, NEAL, 520 N. Yucca Ave., Rialto, CA 92376
 1846 ANDREWS, C. NORMAN, P.O. Box 183, Prospect Heights, IL 60070-0183
 3227 GLASO, KNUD, Tunveien 25A, N-9018 Tromsø, Norway
 3246 OBERLIN, PAUL A., Military Detachment, USNS MARS T-AFS 1, FPO AP 96672
 2802 ENGWALL, KEITH R., 309 Oppitz Lane, Lakeland, FL 33803-4425
 1636 PAULSON, ROBERT E., 29250 US Hwy 19, N Lot 417, Clearwater, FL 34621
 3362 STEN, VIKTOR E., Pattee Rd., Hawkesbury, Ontario, Canada K6A 2R2
 2881 WALLQVIST, ANDERS c/o Choe, 677 Craig Ave., Staten Island, NY 10307
 2352 JOHNSON, EDWIN N. 2707 Clare Ave., Apt 233, Bremerton, WA 98310-3339
 L-77 KOLS, DAVID, Le Chateau Vlg #106, 10411 Clayton Rd., St. Louis, MO 63131
 3374 AHLSTEDT, HANS, Postgatan 9, S-570 02 Stockaryd, Sweden
 3230 SIEFERING, LYLE, 2212 Carbonado Road, Oskaloosa, IA 52577
 2462 CARBIS, NEAL, P.O. Box 1034, Searchlight, NV 89046-1034
 2273 THORSTENSEN, ARVID, Suite 7, 9012 Walnut Grove Dr., Langley, BC Canada V1M
 2K3

SCC Membership Summary as of March 31, 1993

Current Total Paid.....	975	Total Paid Last Report	963
Honorary	6	Changes.....	1Q93
Life	63	New Members.....	+24
Regular.....	901	New Life	0
Subscriptions.....	5	Reinstated	+1
Total Members	975	Adjustment.....	0
		Regular to Life	0
Courtesy & Exchange	41	Resignations.....	-5
SCC Staff & Library	50	Deceased (1-L).....	-5
Total PH Copies	1066	Members Dropped.....	-3
		Total Changes	+12

* S * C * C *

Articles for the Posthorn are Always Welcome!

Pen Pals, Plus . . .

With this issue we are inaugurating a feature similar to Member-to-Member ads. If you are looking for pen pals, stamp exchanges, obscure information, we will print requests on a "space available" basis with minor editing as necessary. Try to be brief — 35 words or less is best. SCC and the *Posthorn* cannot be held responsible for stamp exchanges. Use good judgment.

Wish to contact collectors of **Southeast Norway postal history; Moss area of Østfold**; wish information on living relatives there. Will correspond with collectors of postal history of **Otter Tail County Minnesota and early 1880s Scandinavia immigrants**. Dr. Richard Collins St. Clair, 781 Somerville Ave. #2, Somerville, MA 02143 (3443-1)

* S * C * C *

Member-to-Member Ads

FREE MEMBER-TO-MEMBER ADS are available to SCC members and limited to three lines, approx. 40-45 words on a first-come basis — and also limited to only two pages per issue. Submit ads, subject to minor editing for space purposes, to the Editor. (Dealer members will not be eligible for gratis ads, but can purchase M-T-M space at the rate of 20 words for \$2. (minimum) plus 10¢ per additional word. Contact our Business Manager listed on the Contents Page.)

FOR SALE: Canceled Denmark & Norway. 1991 Scott \$1,088.45. Will sell for \$340. postpaid/insured. Photocopy is available for \$1 and SASE. Jim Burgeson, 2266 Kinclair Dr., Pasadena, CA 91107.

(LM 37-4)

* S * C * C *

FINLAND!! WANT TO BUY small or large accumulations of the common 1917-29 "Saarinens" (Scott type A19) for study purposes. Please send all you can for my check payment. Jacob Kisner, 254 Park Avenue South, PHF, New York, NY 10010.

(SCC 2899-4)

* S * C * C *

WANTED; Postcards and Covers from Canada to Scandinavian countries or sent to Canada. Prompt payment or answers. Charles Seaman, 48 Dogwood Ct., Safety Harbor, FL 34695 (3380-3)

* S * C * C *

WANTED; Scandinavian & WW covers & cancels having to do with lighthouses, navigation aids & life-saving at sea (inc. lifeboats). Buy or trade. Contact Bob Lang, PO Box 125, Newark, DE 19715.

(1095-3)

* S * C * C *

I have some extra MNH, mostly Vf Norway which I would like to trade for needed VF MNH Norway stamps.

Extra	Extra	Extra	Need	Need	Need
98-7 copies	134-7 copies	146	70-5 copies	133	216
108-2 copies	135	151-4 copies	97-4 copies	138-2 copies	224-8 copies
110-2 copies	136	153-17 copies	100-3 copies	142	227
115-2 copies	137-2 copies	179-14 copies	103	146	235
117-5 copies	139	B1-7 copies	104	147	237
119-2 copies	140	B2-4 copies	107-3 copies	152	311-5 copies
123	141-5 copies		108-3 copies	158	012
125	142		112	197A-2 copies	
126	144-2 copies		123	214-3 copies	
130-4 copies	145-3		128	215-3 copies	

ROBERT FRIGSTAD, 2181 Lakeaires Blvd., White Bear Lake, MN 55110

ICELAND COVERS AND CANCELS WANTED; Need covers from Pre-Republic to modern (no FDC). Also need district, numeral, crown and posthorn, and foreign cancels. Stephen Hake, 10662 Lora, Temple City, CA 91780. (D-3)

* S * C * C *

DENMARK UDSLEBNE COVERS with KE cancel values 2 - 100 DKK selling at 5xKE for 2 - 10 DKK cancels, 3 x KE for 11-100 DKK. Send SASE for list and prices. M. Bjorklund, Box 1640, Buellton, CA 93427. (3557-3)

* S * C * C *

WANTED; Iceland Red Trawler error! FACIT 505v1; Scott 446 variety. Top prices paid. Also, other Iceland errors and oddities. Send price and I will answer. Karl P. Klaus, 152 West Lincoln Ave, Roselle Park, NJ 07204 (3053-2)

* S * C * C *

FOR SALE: Two Frank Godden Blue Leather albums in perfect condition with pages. These are top of the line. Kai Hansen, 2344 Grouse Ct. SE, Grand Rapids, MI 49546 (242-2)

* S * C * C *

WANTED; Sweden Bulk lots, specialist materials, covers. Will buy or trade. Have 70s-80s FDC, many booklets. No complex deals please. Ed Denson, PO Box 158, Alderpoint, CA 95511 (3236-2)

* S * C * C *

TRADE SWEDEN DUPLICATES: Send me an envelope of Sweden, receive similar in return. All different gets all different back. I'm looking for cancels and minor varieties. Ed Denson, PO Box 158, Alderpoint, CA 95511 (3236-2)

* S * C * C *

WANTED: USED SWEDISH RING TYPE stamps for study and reference. Will buy any quantity, large or small, used #17-44, 46-49. Frank Baze, 7061 Yalley Mill Rd., Richmond, VA 23231. (#2935-1)

* S * C * C *

FAROE COVERS DATED 29.1.75 WANTED: Last day of issue with Danish stamps from Tórshavn, Vidareidi, and Svínø. Buy or trade. F. B. Johns, 4516 Amherst Ln., Las Vegas, NV 89107. (#2361-1)

* S * C * C *

WANTED: Town and RR Cancels on 10 öre Oscar, Sweden Scott, FACIT #45. Please give price wanted. Ivar Gustafson, 49 Grove Ave., Cranston, RI 02910. (#2635-1)

* S * C * C *

HELP WANTED identifying Danish classic stamps by printing or pane position and condition — contact Jed Richter, 1353 Plum St., San Diego, CA 92106. (#L13-1)

* S * C * C *

FOR SALE: Posthorns Number One through 1990. Unbound originals. \$250. Robert Frigstad, 2181 Lakeaires Blvd, White Bear Lake, MN 55110. (#L2501)

* S * C * C *

WANTED: DENMARK UDSLEBNE, full postmarks, covers or stamps. Scan. perfins on/off cover. Åland and Faroe commercial covers w/legible postmarks. Send lists, lots, for approval. Stephen D. Nadler, 3701 S. Santa Fe Drive, Sheridan, CO 80110. (#3311-1)

* S * C * C *

OBSELETE POSTAL ARTIFACTS wanted from any country. Swap Post Office View PCs, photos, USA for PO views elsewhere. Send LSASE for want lists. Scheer, 12 East Rosemont Ave., Alexandria, VA 22301-2325. (#3112-1)

* S * C * C *

NORWAY POSTCARDS pre-1950 wanted. All kinds from any place — panel-cards & "Hilsen fra" (Grupp aus). Kjell Aasum, Tverrvegen 9, 2150. Aarnes, Romerike, Norway. (#M01)

* S * C * C *

ICELAND, THE FAROES AND GREENLAND

A price list featuring many inexpensive offers
will be sent free of charge

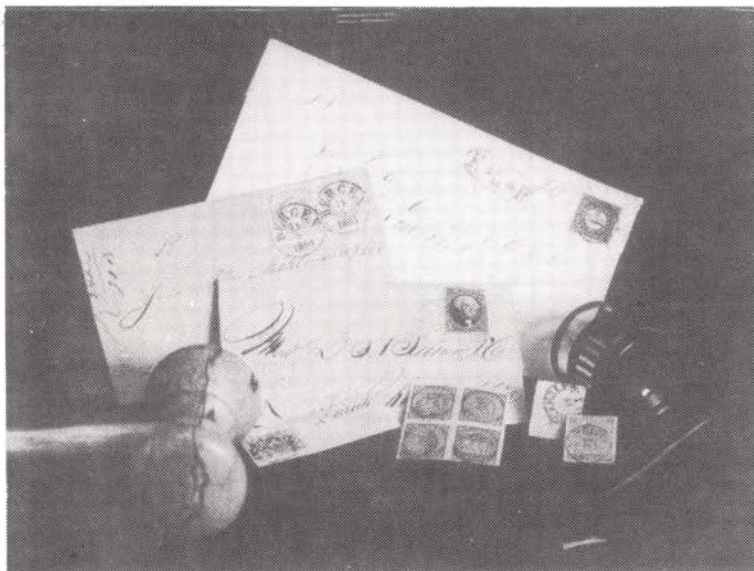


STAMP CENTER
P.O. Box 78, IS-121 Reykjavik, Iceland





SCANDINAVIA'S LARGEST AUCTIONS



Contact us today and let us discuss the best possible way of selling your stamps.

If you are interested in buying at our auctions, ask for a free trial copy of the auction catalogue.

POSTILJONEN AB

Box 4118, S-203 12 Malmö, Sweden

Tel 040-72290

Tlx 32602 — Fax 040-72299





THINKING OF SELLING?

We Offer 3 Distinct Alternatives

PUBLIC AUCTION Through public floor auctions, your stamps reach the broadest possible audience in a positive selling environment. The price you realize will be determined by open market bidding, not private negotiation. Our illustrated auction catalogs and broad customer base insure that your stamps are attractively presented to active buyers in the United States and overseas. *Consignments for our Fall auction are being accepted through Sept. 1.*

PRIVATE TREATY Specialized collections, in particular, must be presented in the proper way to other specialists in order to maximize the price realized. You set the price. We then inform selected customers of the property and endeavor to sell it within 90 days.

IMMEDIATE CASH We constantly buy and sell stamps in the normal course of our business and need to acquire collections as well as better stamps and covers from all Scandinavian countries. We provide frank evaluations and IMMEDIATE PAYMENT IN FULL for all acquired material regardless of size.

SEND FOR OUR FREE NET PRICE LISTS of all Scandinavian countries which now include the 1992 OFFICIAL YEAR SETS as well as all those from 1945 to date.

Call Toll Free 1-800-950-0058

in NJ 1-201-746-7982

FAX 1-201-403-2601



NORTHLAND CO.

BOX 34 • VERONA, NJ 07044

Scandinavia Exclusively . . . Since 1975

