



The

POSTHORN

FEBRUARY 1995

R4/8 ● ○ 	R5/1 ● ○ 	R5/3 ● 	R5/4 ● ○ 	R5/7 ● ○ 	R5/8 ● ○
R6/2 ● ○ 	R6/4 ● ○ 	R6/6 ● ○ 	R6/8 ● ○ 	R7/1 ● ○ 	R7/2 ● ○
R7/3 ● 	R7/5 ● ○ 	R7/7 ● ○ 	R8/1 ● ○ 	R8/2 ● ○ 	R8/3 ● ○
R8/4 ● ○ 	R8/5 ● ○ 	R8/6 ● ○ 	R8/8 ● ○ 	R8/9 ● 	R8/10 ● ○

Plating the 2 Öre

See Page 3



Scandinavia

- Building fine collections for exhibition, research, and enjoyment. Offering approvals from your specific want list or a description of your specialized interests.
- Offering complete private treaty services for your Scandinavian material.
- Active buyer of complete collections or individual items. High prices paid; with immediate cash payment. Avoid the delays and uncertainty of auctions. I have many customers for your good material.
- Providing over 300 titles of philatelic literature and catalogs for the Scandinavian collector.

Call toll-free 1-800-44-STAMP (1-800-447-8267)

Phone: 910-376-9991 Fax: 910-376-6750

The Scandinavian Specialist since 1973

Jay Smith

P.O. Box 650-SCC Snow Camp, NC 27349



The
POST HORN

Official Publication of the
SCANDINAVIAN COLLECTORS CLUB
Published Quarterly Since 1943
Copyright 1994 Scandinavian Collectors Club

Vol. 52, No. 1

February 1995

Whole No. 202

Table of Contents

Plating Sweden 2 Öre Ringtype, by Martin Fishenden & Frank Baze	3
Alfred Gruber Receives Pelander Award	15
Rare Letter from Sweden to Asiatic Turkey, by Lauson H. Stone	16
Icelandic Post: First 150 Years, by Richard St. Clair	19
What's Happening in Finland, by Mike Hvidonov	22
<i>Finland's Coat of Arms Issues: A Review, by Alan Warren</i>	23
Iceland Postal Stationery, Danish RPOs: Review by Alan Warren	25
Two Volumes of Classic Denmark: A Review, by Alan Warren	26
Election of Officers (Results)	27
Scandinavian Literature Notes, by Alan Warren	28
Transfers & Re-entries	30
AFA Special Catalog: A Review, by Alan Warren	31
SCC National Meeting, Philatelic Show	32
Collectors' Forum/Scandinavian Area Awards	33
Bidding on Roger Swanson's "I Gildi" collection	35
President's Letter	37
Library News	41
Membership Exchange	47
Ben de Lambert obituary	48

Deadline for May Issue: March 30, 1995

Editor: John Lindholm
2316 Lakeview Dr.
Fergus Falls, MN 56537
(218) 739-3260

Executive Secretary: Robert W. Lang
P.O. Box 125, Newark, DE 19715

Business Manager (Advertising):
John R. "Jack" Day, 2109 Skycrest Dr. #4
Walnut Creek, CA 94591

THE POSTHORN (ISSN 0551-6817) is published four times yearly by The Scandinavian Collectors Club. Membership, including subscription, \$15 per year, \$21 for Non North American addresses. Contact Executive Secretary for membership & change of address. Advertising rates & terms available from Business Manager. Second class postage paid at Madrid, Iowa 50156. Copyright 1993 by The Scandinavian Collectors Club.

POSTMASTER: Send Form 3579 to SCC Exec. Secretary, P.O. Box 125, Newark, DE 19715

Affiliate 79, American Philatelic Society
Affiliate, Royal Philatelic Society of Canada

Printed in USA
(USPS 603680, ISSN 0551-6817)

LARS TORE ERIKSSON



Frimärksauktioner

Box 250, S-391 23 Kalmar, Sweden
Tel: +46-480-15090 Fax: +46-480-15006



INTERNATIONAL STAMP AUCTIONS TWICE EACH YEAR

SPECIALISTS IN SCANDINAVIA

We are one of the best . . .
and we **HAVE** got the know-how!

Contact us today so that we can discuss the optimum
way of selling your stamps.

If you are interested in **BUYING** at our
auctions, please ask for a free catalogue.

We look forward to hearing from you!

LARS TORE ERIKSSON
PO Box 250, S-391 23 Kalmar, Sweden

SWEDEN - A Plating Study of the 2 öre Ringtype

by Martin Fishenden & Frank Baze

This article breaks new ground in two ways. First, it is a collaborative effort by members of the Scandinavia Philatelic Society (Martin) and the Scandinavian Collectors Club (Frank). And second, it attempts a plating study of one of the Swedish ringtype stamps, the 2 öre value of the posthorn series.

As a preamble, it is necessary to describe how the printing plate for this stamp was made; the description is taken from the American translation of the SFF handbook. It says that for the 2 öre value, the last of the ringtype stamps to be issued, an original engraving was made only for the figure 2 and the surrounding circle with text. A block of ten (2 x 5) was then cut out from a plate of the 24 öre value. From this, the round center portions were removed, and replaced by electrotypes of the 2 öre figure and text. From this block of ten, ten electrotypes were formed into a plate of 100. The stamps were first issued in August of 1891.

And now to the study. As a basis, we had available two near complete sheets, photographs of two of the Postmuseum's three sheets, and rather poor illustrations of two other sheets; and we either owned, acquired, or were able to examine several hundred other copies.

Right at the start, we noticed that on three of the sheets, the well known dot-before-F matrix flaw occurred at ten positions on the sheet, and on the other three sheets it did not. There seemed to be two possible explanations for this observation; either two plates were used, or there was one plate, and repairs were made sometime during its life. In spite of many inquiries, we have been unable to get any direct evidence for one or the other explanation, so a judgement has to be made on the basis of indirect evidence. This is set out in the following paragraphs.

On the question of dates, there is no doubt that earlier printings were of sheets with dots. A serial number was printed on the back of each sheet of the form A12345, starting with the letter A, going through the Swedish alphabet to Ö, and finally Aa. We have collected information on 8 sheets, and the numbers are:

Dot sheets	Ö62630	No-dot sheets	Ö73571
	Ö66984		Ö77672
	Ö67472		Aa09507
	Ö67489		Aa09526

No record is available of the date of printing particular sheets, but the total printing was 19,811 sheets, and the above ranges account for most of the total issue.

A new plate for printing the posthorn on the back of the stamps appears to have been brought into use for the no-dot sheets. Each plate has a few cliché flaws on the posthorns; they are quite different and in different positions on the two plates.

Another difference between the two printings is in the position of the thin 2 variety. It occurs at five positions on the dot sheets, and at the same five positions plus seven others on the no-dot sheets.

Regarding cliché flaws, the majority are the same on both the dot and no-dot sheets; but on the dot sheets there are many more white spots on the background to the central circle. Some other flaws are present only on the dot sheets; but more importantly, four clichés show color marks on the figure 2 which are only present

on the no-dot sheets.

On the basis of this evidence we think that the balance of probability is that two plates were used (the dot plate and the no-dot plate). The removal of dots and the reduction of spots in the central circle could be the result of repairs and improvements in printing, but the additional thin 2 flaws and the cliché flaws unique to the no-dot sheets are difficult to explain except by the use of two plates. The earliest postmark date we have seen on a stamp which can be positively identified as being from the no-dot plate is October 15, 1892.

Matrix Flaws

In view of the method used to make the plates, matrix flaws would be expected if there were flaws on the block of ten from which the plates were made. In fact, the following have been identified:

Type 1	SE corner sliced (chamfered).
Type 2	SW corner rounded.
Type 3	Right inner frame nicked 6-1/2mm above base. Thick outer ring usually thin under VÅ of TVÅ.
Type 7	Thick spot at the bottom of left outer frame.
Type 8	Dot before F of FRIMÄRKE (dot plate only).

Note that types 1 & 3 are shown in the frame flaw illustrations.

Type 1 flaws occur at R1/1, 1/3, 1/5, 1/7, 1/9, 6/1, etc.

Type 8 flaws occur at R4/2, 4/4, 4/6, ..., 9/2 and so on.

Cliché Flaws

We have identified one or more cliché flaws at 87 positions out of the sheet of 100. Listing these flaws in such a way as to enable individual copies to be plated without too much difficulty presented a number of problems, particularly:

- The presumed existence of two plates, with most of the matrix and cliché flaws common to both plates, so that it is not usually possible to tell from which plate a single copy comes.
- The large number of flaws to be listed.

These problems are tackled in the following way:

- All the cliché flaws are combined into a single set of lists, with a distinguishing mark by those that occur only on one plate; * for the dot plate, and + for the no-dot plate. [Be aware that the * symbol is also used to designate the stars in the stamp *design* when describing that panel.]
- To cope with the large number of flaws, we have divided the stamp design into the following parts:

CC	The CENTRAL CIRCLE, excluding the figure 2.
2	Flaws on and around the figure 2.
F	The FRAMES, including the corner ornaments.
P	The PANEL, with the words FRIMÄRKE * TVÅ ÖRE *.
R(a)	The outer panel rings joined by blobs of color.
R(b)	Flaws on the thick outer ring.
R(c)	Flaws on the thin outer ring.
R(d)	Flaws on the thin inner ring.
BF	BACKGROUND FIELD flaws.
PH	POSTHORN flaws (on reverse).

Even with this breakdown, there are still some forty flaws in the R(b) and CC lists, which makes a search very tedious. These and the R(a) lists are therefore supplemented by a table which shows the position of each flaw in relation to the nearest letter, star, or space in the FRIMÄRKE * TVÅ ÖRE * panel. So if a stamp is found with e.g. a flaw near T or K, the clichés with flaws in this position may be quickly identified.

When a cliché shows more than one flaw, it will of course appear in more than one list. Cross references are therefore provided in the form "See CC, P" to show in which lists other flaws at the same position will be found. The presence of a matrix flaw, or the thin 2 variety, is also identified. It is thus possible from any entry in the lists to identify all of the flaws at that position.

It has been difficult to decide which flaws to include in the lists. Although about 160 are listed, many more minor flaws are to be seen on many clichés, and while they are not all 100% constant, they often help with identification. A few of these extra flaws are included in the illustrations, but we have tried to include enough information in the text to make identification possible in most cases. Anyone trying to attempt a serious plating study would need to obtain photographs of a dot and no-dot sheet from the Postmuseum in Stockholm. The cost is about 150 Kr. However, the prints from their photographs are rather dark and do not show some detail, such as the white spots in the central circle, which are clearly visible on all the sheets and blocks seen by the authors.

Another not unusual problem was that some flaws do not show on all copies. In such cases, the description is qualified by 'usually' or 'sometimes'. There are several possible explanations; for example, some breaks may not show on heavily inked copies, and rings may not be joined on lightly inked copies, and a few flaws may have developed during the life of the plates.

For our own use during the study, we also made a list showing row by row all the flaws at each position on the sheet. It would have been nice to include this list also in the article, but it would have made unreasonable demands on space. However, copies may be obtained at cost by either of the authors.

The illustrations are arranged somewhat differently from the lists, as it proved economical to combine information from two or more lists in one group of drawings. The arrangement is as follows:

- Group 1 Flaws on figure 2 & in central circle.
- Group 2 Flaws on the rings & the *FRIMÄRKE*TVÅ ÖRE panel.
- Group 3 Flaws on the frames, including corner ornaments.
- Group 4 Posthorn flaws.

Each drawing shows the cliché position and a black dot or open circle (or both) to show whether the flaw is present on the dot or no-dot plate (or both). As mentioned above, the drawings occasionally show more detail than is described in the lists.

There are some intriguing features among the observed cliché flaws. One, mentioned above, is that colored marks on the figure 2 occur only on the no-dot plate. Another is that in at least four cases, identical flaws occur on more than one cliché. In two cases these duplicated flaws occur in the same position in the 2 x 5 matrix;

- a). E joined to ring at positions 8/1, 8/3, & 8/9.
- b). Rings joined between left star & F at positions 9/1 & 9/3.

But in the other two cases, the duplicated flaws occur in neighboring positions;

- c). Top ball of 2 clipped at right at positions 7/5 & 8/5.
- d). Rings joined under T at positions 3/3 & 3/4.

If anyone can provide an explanation for these observations, or provide any evidence on the existence or otherwise of the two plates, the authors would be interested in hearing from them.

In conclusion, we would like to acknowledge with grateful thanks assistance with advice, or the provision of stamps for examination from, in the UK, Chris Jahr, Andrew Riddell & Roy Varney; in Sweden, Rolf Gummesson and (from the Postmuseum) Eric Hamburg and Bjorn Sylwan; and in the USA Dave Anderson, Jim Burgeson, George Kuhhorn and the late Ben de Lambert.

There now follows the lists of cliché flaws, the tables, and illustrations.

Cliché Flaws

CC. Central Circle, excluding figure 2.

In the central circle, particularly on the dot plate, most clichés have a speckled background of white spots and other marks, and it has been difficult to decide which to include in the list and illustrations. The criteria applied have been that flaws are both constant and likely to be useful for identification.

- R1/1 White patch between Ö & tail of 2*. Spot over E of ÖRE. T1.
- R1/3 Spot right of top loop of 2*. T1.
- R1/7 Spot between 2 & ÄR*. Thin slice off circle edge under M. T1. See Ra.
- R1/8 Two small spots between right star & 2. T2. See Rc.
- R1/10 Small spot by left star*. T2.
- R2/1 Spot above left of foot of 2*. T3. See Rc.
- R2/2 Notch on edge of circle under E of MÄRKE. Tin 2.
- R2/5 Two spots near edge of circle between E of MÄRKE & Right Star*. T3. See Rb.
- R2/8 White spur on edge of circle at 3.30. White blob between 2 & FR*. See F, Ra, Rb.
- R2/10 Faint spot under right center of 2.
- R3/1 Spot over Å+. Spots over T & between R of FRI & 2.
- R3/6 Faint white patch between 2 & M. See Rb.
- R3/8 Large white patch over foot of 2*. See F.
- R4/3 Dash between 2 & right star*. T7. See Ra.
- R4/7 Faint spot over T*. T7. See Rb.
- R4/8 White spot on circle edge under Ä. White streaks left of 2*. T8. See 2, Rb.
- R5/1 Faint spot between MÄ & 2. See Rb.
- R5/5 Spot between V and point on foot of 2.
- R5/8 Spot over T of TVÄ. See 2, Rb.
- R6/6 Many spots, notably between 2 & MÄ & over ÖRE (3 spots)*. T2. Thin 2+ See Rb.
- R6/7 Many spots, notably under RI*. T1. See F.
- R6/9 Many spots, notably near horizontal line over Å*. T1.
- R7/1 Faint spot in top-loop of 2. T3. See PH, Ra, Rb.
- R7/5 Several spots, notably 3 or 4 over R of ÖRE*. See F, 2, Rb.
- R7/6 Many marks, notably curved loop under top loop of 2*. Thin 2. See 2.
- R7/7 Many spots, notably top left of 2 & over Ö*. T3. Thin 2+. See 2, Ra, Rb.

- R7/8 Many faint spots, notably in top loop of 2 & right of left star.
 R7/9 White patch over Å; sometimes spots over T & right of left star*. T3. See Rb.
 R7/10 Vertical white line in top loop of 2*. Spot over R in ÖRE*. White patch under RIM.
 R8/5 Many spots, notably on circle edge between KE & right star*. White dash in front of 2*. See 2, F, Rb.
 R8/6 Many spots, notably under 2*. Thin 2+. See 2, Ra.
 R8/7 Many spots, notably between 2 & Å*. See 2.
 R8/10 Many spots, notably large oval spot between 2 & M*. See BF, Rb.
 R9/5 Spot over T*. T7. See Rb.
 R9/6 Many marks, notably line over Å of TVÅ*. T8. See Rb, Rc.
 R9/8 White spur on edge of circle at 3.30 (see R2/8). T8. See Rb.
 R9/10 Spot between 2 & FR. White streak in loop of 2. Thin 2+. See Rb.
 R10/1 Usually spot under RK.
 R10/5 Spots or streak left of foot of 2. Thin 2+. See Rb.
 R10/6 Many spots, notably above left of Ö*. See PH, Ra.
 R10/9 Faint white circle inside inner ring between FR & right star*. See Rb.
 R10/10 Faint white circle inside inner ring over most of top half, with spots below M and at 6 o'clock. See Rb.

F. Frames, including corner ornaments

- R1/6 Dot below NE corner ornament. T2. See Rb.
 R1/8 Right outer weak for top 1mm. T2. See CC, Rc.
 R2/4 Part of NE ornament weak*. See P, Rb.
 R3/1 Left outer thick by SW ornament. See CC, Ra, Rb.
 R3/5 Break in top of SW ornament. See P, Rb.
 R3/8 Top inner broken over I of FRI. See CC.
 R4/1 Left outer sometimes broken just below star. T7. See P, PH, Rb.
 R4/4 Right outer thick by NE ornament. T8. See P.
 R5/7 Dots on bottom inner under second E. See Ra, Rb.
 R5/10 Color dot outside SE corner.
 R6/4 SW outer corner thick. T2. See Ra.
 R6/7 Break in SW ornament. T1. See CC.
 R7/5 Slight damage to NW ornament. Thin 2. See 2, Rb.
 R8/5 Left inner; two breaks just below star. See 2, CC, Rb.
 R9/10 Right outer missing over most of bottom half. T8. Thin 2. See CC.
 R10/7 Break in SE ornament. See PH.

P. Frimärke — Två Öre panel.

- R1/2 Tiny dot before F. T2. Thin 2+. See Rc.
 R2/4 Top of R and right arm of K joined to ring. See F, Rb.
 R3/5 Left star joined to outer ring*. See F, Rb.
 R4/1 Top right of I joined to ring (see 9/7). T7. See F, PH, Rb.
 R4/4 Top of M joined to ring. T8. See F.
 R5/4 Top right of F joined to ring.
 R6/2 Top of R of MÄRKE joined to ring. T2. See PH, Ra, Rb.
 R8/1 Base of E of ÖRE joined to ring (see 8/3 & 8/9). See Ra, Rb.
 R8/3 Base of E of ÖRE joined to ring (see 8/1 & 8/9).
 R8/8 Top left of F joined to ring. See Ra.
 R8/9 Base of E of ÖRE joined to ring* (see 8/1 & 8/3).

R9/7 Top right of I joined to ring (see 4/1). T7.

2. Flaws on the Figure 2.

- R4/8 Colored dot on upper right loop+. T8. See CC, Rb.
- R5/8 Dent in top of top loop of 2. See Rb.
- R7/5 Top ball of 2 clipped at right. T3. Thin 2. See CC, F, Rb.
- R7/6 Dent in top of lower bar of 2. Thin 2. See CC.
- R7/7 Colored dash in foot of 2+. T3. Thin 2+. See CC, Ra, Rb.
- R8/5 Top ball of 2 clipped at right. See CC, F, Rb.
- R8/6 Vertical color mark in right loop of 2+. Thin 2+. See CC, Ra.
- R8/7 Colored line separates top of 2 from foot+. See CC.

Thin 2 variety.

The thin 2 variety occurs in the following positions:

Both plates: R2/2, R3/2, R7/5, R7/6, R9/10

No-dot Plate: R1/2, R2/8, R6/6, R7/7, R8/6, R10/5, R10/6

Caution: Some late observations suggest that the appearance (thickness) of the figure 2 may not be constant and that this feature cannot be relied upon for plating purposes.

Ra. Outer Rings round panel joined by blobs of color.

- R1/7 Joined below T of TVÅ. T1. See CC.
- R3/1 Joined above left star*. See CC, F, Rb.
- R3/3 Joined under T of TVÅ.
- R3/4 Joined under T of TVÅ.
- R4/2 Joined right of E of MÄRKE T8. See Rc.
- R4/3 Joined under TV. T7. See CC.
- R5/7 Joined over F. See F, Rb.
- R6/2 Joined over R of MÄRKE. T2. See P, PH, Rb.
- R6/4 Joined under V & over R of MÄRKE. T2. See F.
- R7/1 Joined at 6 o'clock & left of T. T3. See CC, PH, Rb.
- R7/2 Joined between K & E, and left of F.
- R7/7 Joined between left star & T. T3. See CC, 2, Rb.
- R8/1 Joined by left star. See P, Rb.
- R8/4 Joined between K & E.
- R8/6 Joined by right star*. Thin 2. See CC, 2.
- R8/8 Joined between R & I. See P.
- R9/1 Joined between left star & F*. T7. See Rb.
- R9/3 Joined between left star & F. T7. See Rc.
- R9/4 Joined between left star & T. T8. See Rb.
- R10/3 Sometimes joined by left star & below F. See Rb.
- R10/6 Sometimes joined below right star. Thin 2+. See CC, PH.

Rb. Thick Outer Ring.

- R1/5 Weak over F of FRI (See 5/1). T1.
- R1/6 Break between M & Ä of MÄRKE. T2. See F.
- R2/4 Small break over E of MÄRKE+. See F, P.
- R2/5 Blob on outside under R of ÖRE. T3. See CC.
- R2/7 2mm break between left star & F. Small break between R & K. T3.

- R3/1 Break over R of MÄRKE. See CC, F, Ra.
 R3/2 Breaks over RK (major), left of F & below V. Thin 2.
 R3/5 Breaks over left star & below right star. Sometimes break over RK*. See F, P.
 R3/6 Break over vertical stroke of R in MÄRKE. See CC.
 R3/7 Breaks over RI & just below left star.
 R4/1 Break left of F. T7. See F, P, PH.
 R4/5 Large break under Å of TVÅ. T7. See Rc.
 R4/6 Breaks between left star & T, and between T & V. T8. See PH.
 R4/7 Large break over M. T7. See CC.
 R4/8 Breaks over MÄ & K, and dot over K, also between left star & T and between V & Å. T8. See CC, 2.
 R5/1 Weak over F of FRI (see 1/5). See CC.
 R5/3 Sometimes breaks over E of MÄRKE, & between R & K*. See Rd.
 R5/7 Breaks over RI & MÄ. See F, Ra.
 R5/8 Breaks over RI & below left star. See CC, 2.
 R6/2 Several breaks under TVÅ. T2. See P, PH, Ra.
 R6/6 Break over R of FRI. T2. Thin 2+. See CC.
 R7/1 Break under V. Sometimes break over IM. T3. See CC, PH, Ra.
 R7/3 Breaks under V and sometimes over IM*. T3.
 R7/5 Break under R of ÖRE. T3. Thin 2. See CC, F, 2.
 R7/7 Dots on top of ring at 6 o'clock. T3. Thin 2+. See CC, Ra, 2.
 R7/9 Sometimes break over IM*. T3. See CC.
 R8/1 Major breaks under TVÅ, then thick under right leg of Å. See P, Ra.
 R8/2 Breaks below left star & right of Å of TVÅ.
 R8/5 Break by left star. See CC, F, 2.
 R8/10 Break over right leg of M. See BF, CC.
 R9/1 Breaks at 6 o'clock & under R of ÖRE. T7. See Ra.
 R9/2 Major breaks between T & F; over R of FRI & under V. T8.
 R9/4 Breaks over FR and M (larger on *). T8. See Ra.
 R9/5 Breaks between T & V, and under right leg of R of ÖRE. T7. See CC.
 R9/6 Major break under T. Smaller break right of Å. T8. See CC, Rc.
 R9/8 Break below right star. T8. See CC.
 R9/9 Break over K. T7.
 R10/2 Major breaks above left star & over RI.
 R10/3 Break between M and Ä of MÄRKE. See Ra.
 R10/4 Major break over RIM; thick between F & left star.
 R10/5 Small break over right leg of M. Thin 2+. See CC.
 R10/8 Small break between M & Ä of MÄRKE. See Rc.
 R10/9 Weak between R & K. See CC.
 R10/10 Major break left of F. See CC.

Rc. Thin Outer Ring.

There are many small breaks in the thin outer ring. Some are not constant, and some appear on several clichés, and are not therefore useful as identifiers. Those few chosen for listing are constant, and do give help in identification.

- R1/2 Break between R & E of ÖRE. T2. Thin 2+. See P.
 R1/8 Ring thick over M (may look like rings joined). T2. See CC, F.
 R2/1 Ring thick between T & left star. T3. See CC, Ra.
 R4/2 Break left of Ä of MÄRKE. T8. See Ra.
 R4/5 Ring thick over F & R of FRIM. T7. See Rb.

- R6/8 Ring thick between R & E of ÖRE. T2.
 R9/3 Ring thick right of E of ÖRE. T7. See Ra.
 R9/6 Break by right star. T8. See CC, Rb.
 R10/8 Ring thick over vertical stroke of K. See Rb.

Rd. Thin Inner Ring.

See comments above under list Rc.

- R5/3 Ring thick between Å & Ö. See Rb.

BF. Background Field.

- R8/10 Dot in background under R of SVERIGE. See CC, Rb.

PH. Posthorn Flaws

Caution! On reverse of sheet, numbers run from right to left.

- R1/9 Two breaks in bottom of horn*.
 R4/1 Mouthpiece of horn defective+.
 R4/6 Break in bottom where mouthpiece meets main part of horn+.
 R5/6 Break in bottom where mouthpiece meets main part of horn+.
 R6/2 Break in large rim of horn near top+.
 R7/1 Break in large rim of horn near top+.
 R7/4 Break in top outer curl of horn*.
 R10/6 Break in bottom rim of horn*.
 R10/7 Break in rim where it meets body of horn*.



1994 Facit

\$38.95 Net Cost \$28.95*

*The \$38.95 catalog comes with our bonus \$10 coupon toward a minimum \$50 new purchase from one approval selection from your want list.

- Free Aland 1993 Souvenir Sheet
- Complete English/Swedish text
- Call toll-free with VISA or MasterCard
- U.S. Orders \$38.95 Postpaid (book rate)
- Foreign orders add \$3.00 for surface mail. Airmail is extra.

To order call **1-800-447-8267** or
 1-910-376-9991 Fax 1-910-376-6750

North American Distributor:

Jay Smith & Associates
 P.O. Box 650-615
 Snow Camp, NC 27349



2 ÖRE PLATE FAULTS
Central Circle, Including Figure "2"

R1/1 ●	R1/3 ●	R1/7 ●	R1/8 ●○	R1/10 ●	R2/1 ●
R2/2 ●○	R2/5 ●	R2/8 (See Below)	R2/10 ●○	R3/6 ●	R3/8 ●
R4/3 ●	R4/7 ●	R4/8 ●	R4/8 ○	R5/1 ●○	R5/5 ●○
R5/8 (See Below)	R6/6 ●	R6/7 ●	R6/9 ●	R7/1 ●○	R7/5 ●
R7/5 ○	R7/6 ●	R7/6 ○	R7/7 ●	R7/7 ○	R7/8 ●
R7/9 ●	R7/10 ●	R8/5 ●	R8/5 ○	R8/6 ●	R8/6 ○
R8/7 ●	R8/7 ○	R8/10 ●	R9/5 ●	R9/6 ●	R9/8 ●○
R9/10 (See Below)	R10/1 ●○	R10/5 ●	R10/6 ●	R10/9 ●	R10/10 ●

KEY: ● = Dot Plate / ○ = No Dot Plate

Central Circle and 2



2 ÖRE PLATE FAULTS

Inner Thin Ring to Outer Thick Ring

R1/2 ●○	R1/5 ●○	R1/6 ●○	R1/7 ●○	R1/8 ●○	R2/1 ●○
R2/4 ●○	R2/5 ●○	R2/7 ●○	R3/1 ●○	R3/2 ●○	R3/3 ●○
R3/4 ●○	R3/5 ●	R3/5 ○	R3/6 ●○	R3/7 ●○	R4/1 ●○
R4/2 ●○	R4/3 ●○	R4/4 ●○	R4/5 ●○	R4/6 ●○	R4/7 ●○
R4/8 ●○	R5/1 ●○	R5/3 ●	R5/4 ●○	R5/7 ●○	R5/8 ●○
R6/2 ●○	R6/4 ●○	R6/6 ●○	R6/8 ●○	R7/1 ●○	R7/2 ●○
R7/3 ●	R7/5 ●○	R7/7 ●○	R8/1 ●○	R8/2 ●○	R8/3 ●○
R8/4 ●○	R8/5 ●○	R8/6 ●○	R8/8 ●○	R8/9 ●	R8/10 ●○

Inner Thin Ring to Outer Thick Ring cont.

R9/1 ● ○ 	R9/2 ● ○ 	R9/3 ● ○ 	R9/4 ● ○ 	R9/5 ● ○ 	R9/6 ● ○
R9/7 ● ○ 	R9/8 ● ○ 	R9/9 ● ○ 	R10/2 ● ○ 	R10/3 ● ○ 	R10/4 ● ○
R10/5 ● ○ 	R10/6 ● ○ 	R10/8 ● ○ 	R10/9 ● ○ 	R10/10 ● ○ 	



← BACKGROUND FLAW

FRAME FLAWS →

				R1/1,3,5,7,9 R6/1,3,5,7,9 	R1/6 ● ○ 	R1/8 ● ○ 	
R2/1,3,5,7,9 R7/1,3,5,7,9 	R2/4 ● ○ 	R3/1 ● ○ 	R3/5 ● ○ 	R3/8 ● ○ 	R4/1 ● ○ 	R4/4 ● ○ 	
R5/7 ● ○ 	R5/10 ● ○ 	R6/4 ● ○ 	R6/7 ● ○ 	R7/5 ● ○ 	R8/5 ● ○ 	R9/10 ● ○ 	R10/7 ● ○

POSTHORN FLAWS

			R1/9 ● ○ 	R4/1 ○ ○ 	R4/6 ○ ○
R5/6 ○ ○ 	R6/2 ○ ○ 	R7/1 ○ ○ 	R7/4 ● ○ 	R10/6 ● ○ 	R10/7 ● ○

Summary Table

2 ÖRE RINGTYPE
TABLE OF FLAW LOCATIONS

Top Half of Central Design (Including stars)

Near:	CC Central Circle Flaws	Rb. Thick Ring Breaks	Ra. Rings Joined	Near:
* (L)	1/10, 7/8, 7/9	3/7, 8/2, 8/5	3/1, 8/1, 10/3	* (L)
F		2/7, 3/5, 9/2, 10/2, 10/4, 10/10	9/1, 9/3	F
R	3/1, 9/10	1/5, 3/2, 4/1, 5/1	5/7, 7/2, 10/3	R
I	6/7	9/4		I
M	7/10	5/7, 6/6, 9/2	8/8	M
Å	3/6, 7/7	3/7, 10/2, 10/4		Å
	5/1, 6/6, 8/10, 10/10	5/8		
Ä	4/8	7/1, 7/3, 7/9, 10/4		Ä
R	1/7	4/7, 4/8, 5/7, 8/10, 9/4, 10/5		R
K	10/1	1/6, 10/3		K
E	1/3, 2/2	2/7, 4/8, 5/7		E
	2/5, 8/5	3/1, 3/2, 3/5, 3/6, 10/9	6/2, 6/4	
* (R)	1/8, 4/3	5/3	4/2	* (R)
		3/2, 3/5, 4/8, 9/9, 10/9	7/2, 8/4	
		9/8	8/6, 10/6	

Bottom Half of Central Design (Excluding Stars)

Near:	CC Central Circle Flaws	Rb. Thick Ring Breaks	Ra. Rings Joined	Near:
* (L)	(As Above)	(As Above)	(As Above)	* (L)
T	2/1, 3/1, 5/8, 7/9, 9/5, 10/5	4/6, 4/8, 5/8, 9/2	7/7, 9/4	T
V	4/7	9/6	1/7, 3/3, 3/4, 4/3, 7/1	V
Ä	5/5	4/6, 9/5	4/3, 6/4	Ä
Å	3/1, 6/9, 7/9, 8/6, 8/7, 9/6	3/2, 6/2, 7/1, 7/3		Å
Ö	2/10, 10/10	4/8	7/1	Ö
R	1/1, 7/7, 10/6	4/5, 8/1, 9/6		R
E	6/6, 7/5, 7/10	7/7, 8/2, 9/1		E
	1/1	2/5, 7/5, 9/1, 9/5		
	2/8, 9/8	3/5		
* (R)	(As Above)	(As Above)	(As Above)	* (R)

White Dots Inside Top Loop of Figure "2"

7/1, 7/8, 7/10, 8/10, 9/10

White Dots Inside Bottom Half of Figure "2"

3/8, 7/6, 9/5

* S * C * C *

New Faroes Resident Editor

We have a new resident associate editor from the Faroes. Ingolf Nielsen was born June 15, 1943 at SKIBBY, Zealand, Denmark and became a cabinet maker journeyman at the nearby SKULDELEV in 1964. He served in the Royal Danish Navy at the naval station in TÓRSHAVN, the Faroes and worked thereafter at his trade; establishing his own business in 1986 by buying the company where he worked. He has been a philatelist for years and exhibited several times with success. Among his exhibits are: Tórshavn post office and canceler history. He has written a book about the postal history of the Faroes.

We welcome him and are looking forward to reading his contributions.

Pelander Award Winner



Alfred Gruber

I'm a slow bloomer. If life had been shorter my Pelander wouldn't have been. If it hadn't been for mentors, it wouldn't have been either.

Back in my fortieth decade, living and working away from the mainstream in Orange, Texas, I had a wonderful boss who had formed an outstanding Canal Zone collection. We occasionally oh'ed and ah'ed together over albums. When I mentioned that collecting modern U.S. issues palled, he suggested a small country like Iceland. I jumped in!

Later, in Delaware, the group that became Chapter 13 found me, a lonely SCC member. I had a host of mentors instantly; and an education in Scandinavian philately that expanded into travel to the countries themselves. Now I miss meetings only for serious incapacitations. Thanks men and ladies — and thanks particularly for the Pelander nomination.

One of the marvelous things about this hobby is you can grow with it. Starting with a world album and a packet of 1000 stamps in 1932, I grew into specialization (Iceland, Danish star cancels, humorous postmarks), exhibits

(Chinese in Mexico), and lately, writing.

Some of it is serious stuff taking many pleasant research hours. Some is historical. I call this wandering about the philatelic scape, *Ignus Fatuus*. Like the Will-o-the-Wisp, little flames appear here and there to warm the heart cockles for a time; only to move onward.

Yes, there was life before serious philately — Army (ours) 5 years, chemical engineering (NYU '41) 32 years, and agriculture (Christmas trees) for the past 16.

The best two decisions of my life were: (1) marrying Annette (a collector also) and (2) purchasing the same model Macintosh PC my son has. Annette and I raised two daughters and one son, all now responsible citizens. They are raising our six grandchildren for us now. The Macintosh liberated me from my difficulty in expressing myself in print. Now the rewriting, rewriting, rewriting is almost a pleasure.

This is a hobby to be nurtured and enjoyed! Many thanks for the award.

* S * C * C *

A Rare Letter From Sweden To Asiatic Turkey

By Lauson H. Stone



One of two known pre-UPU covers from Sweden to Asiatic Turkey. It is probably short-franked and was marked on Christmas.

The illustrated letter, canceled with a Swedish railroad postmark dated December 25, 1869, went to a cadet on the Swedish navy's training vessel *Vanadis*, in care of the Swedish consul at Smyrna, a port city on the western coast of Turkish Asia Minor. It arrived there on January 7, 1870, according to a postmark on the back. At the time Turkey still had substantial territory in Europe in addition to its Asiatic possessions.

The addressee is said to have been a member of the prominent Swedish Nordenskjöld family. At the time, many sons of prominent Swedish families sought careers in the Swedish navy, and this involved their spending substantial time on Swedish naval training ships. Over the years there appear to have been several ships with the name *Vanadis*. When I made a trip through the Pacific islands in the late 1940s, I was very interested to see a modern-day

Vanadis moored at dockside in the harbor at Tahiti. This vessel was a large steel-hulled, square-rigged vessel.

The *Vanadis* at Smyrna in 1869 was a steam frigate built in 1862, according to Jan Billgren, the eminent Swedish postal historian. He has researched its history and published an article about it in the December 1992 issue of *Svensk Filatelistisk Tidskrift*, the journal of the Swedish Philatelic Society. There Billgren relates that the ship's name is found in an old Icelandic saga as one of the goddess Fryja's surnames meaning the lady of Van's family. Billgren writes that the ship was 218 feet long and 42 feet wide, carried eight guns, and sailed with a crew of 338 men. Her most famous trip took her around the world in 1883-85. One of the officers on that voyage was the eldest son of King Oscar II. In her last years this *Vanadis* was used as barracks in Stockholm. In

1941 she sank at her mooring and was scrapped after being raised.

Reference to the Swedish postal rate tables indicates that mail could proceed to Smyrna by two routes in 1869, one overland through Germany and Austria to European Turkey and across the Bosphorus, the other via France which maintained a maritime service from Marseille of Brindisi to all the French post offices in ports around the Mediterranean, including the one in Smyrna.

The Swedish rate tables show that the postage rate was 45 öre via the overland route and 66 öre via the French sea service. Thus the 63 öre used on the cover does not indicate which route the cover traveled, and there are no markings to show. A possible explanation is that a postal clerk, in reading the rate table for overland mail, mistakenly read the amount for unfranked letters, which

happened to be 63 öre. However, this explanation is quite unlikely since the practice of sending unfranked letters to foreign countries had been largely discontinued several years earlier. Thus the more logical conclusion is that this cover was sent by the French route but underpaid by 3 öre.

This is an extremely scarce cover to pre-UPU Turkey, European or Asiatic. Turkey joined the Universal Postal Union on July 1, 1875, as one of the original members. Only two earlier covers are recorded to its European territories, a skilling banco cover to Constantinople and an öre cover to Varna in present-day Bulgaria. Similarly, only two pre-UPU covers are recorded to its Asiatic territories, this cover to Smyrna and a recently discovered 102-öre cover via France to Beirut in present-day Lebanon.

* S * C * C *

We offer:

- *Regular sales featuring specialized sections of the Scandinavian countries.*
- *Informative and accurate advice when building or selling your collection.*
- *Competitive consignment terms.*
- *Our extensive network of collector clients here in the U.S. and overseas enables us to pay international top prices when buying outright.*

Please contact Tor Bjork for further information or to receive a complimentary catalog.

PARADISE VALLEY STAMP COMPANY

P.O. BOX 8948, SCOTTSDALE, AZ 85252-8948,
602-948-0087 (TEL), 602-596-6828 (FAX)
A Member in the Eaton Group, Serving the collector since 1937



**POSTAL HISTORY OF THE
WORLD BEFORE 1920**

**AUCTIONS MADE UP
ENTIRELY OF FINE
CLASSIC COVERS OF
THE WORLD**

**Often with Large Sections of
Danish West Indies Postal History**



FREE AUCTION CATALOGUES ON REQUEST:



LUGDUNUM PHILATELIE

39 AV. MAURICE JARROSSON, BP 87
69110 STE FOY LES LYON (FRANCE)
FAX: 78-59-21-67

The Icelandic Post: The First 150 Years (1776-1926)

By Richard St. Clair



This article looks at the early development of Icelandic postal services.

The Icelandic Post, initially created by Danish royal decree in 1776, had humble beginnings in 1778 with the establishment of an annual mail boat service between Reykjavík and Copenhagen, a service which grew over the decades until, by 1858, several trips were being made each year from April through November. The inland service grew during this period as well: by 1831 letters were being delivered eight times a year on the west coast route and, due to increasing public demand, a complete network was established in 1849. The system was restructured and 13 post offices were added.

The modern postal system of Iceland dates from 1872 by a decree dated February 26 and a code of regulations followed on May 3 of the same year. On September 26th of that year, further provisions were established governing the postal relations between Iceland and Denmark. According to these stipulations, Iceland retained autonomy for its interior postal service but operated through the General Postal Director in Copenhagen for all mail abroad. The first adhesive stamps of Iceland appeared on January 1, 1873, printed in Copenhagen. On July 1, 1875 Iceland joined the Universal Postal Union as a part of Denmark.

With internal postal autonomy established in 1872, Iceland had its own exchequer into which all postal receipts flowed. The exchequer not only paid all costs of working the inland service but also subsidized the mail boats to and from Denmark. The postmaster of Reykjavík superintended the postal service throughout the island under the responsibility of the Governor until 1904. After the establishment of a ministry at Reykjavík in 1904, the Reykjavík postmaster's authority came under the minister.

A Sovereign State

Iceland, under Danish rule since 1380, became an independent constitutional monarchy under the Danish crown in accordance with Law no. 30 of November 1918. By this law Iceland became a sovereign state allied to Denmark by the King. During a transitional period in which Iceland was still part of the postal department of Denmark, the national postal authority was established in Iceland. On November 19, 1919 Iceland's status in the Universal Postal Union became that of an independent sovereign state. On January 1, 1920 a Director General was placed at the head of the new Iceland postal administration, and a general postal law was enacted on May 7, 1921. Amended by a

rider dated March 27, 1925 (effective April 1, 1925), the postal law fully established the Icelandic Post.

In addition to the Convention and Agreements of the UPU and the postal law of Iceland, the postal service entered into treaties with other countries, in particular with Denmark, Norway, and later Sweden, for the improvement of postage rates on letters. Special treaties with other countries were rendered necessary because they did not take part in certain international agreements, viz.: (1) with Great Britain and her Colonies, with the United States, and with Canada, for an exchange of money orders, and (2) with Great Britain, concerning the exchange of postal parcels.

For the period 1906-26, the Iceland Postal Administration compiled a report of activities for the official journal of the UPU (*l'Union Postale*). A version of this report was published by Alexander J. Sefi in *The Philatelic Journal of Great Britain* in December, 1928. The following statistical profile emerges from that report.

Post Offices

From 1906 to 1926 the number of post offices in Iceland grew from 246 to 437. In 1926, there were four first-class offices, 46 sub-offices, 203 depots, and 184 post stations¹. Of these, only one office was a traveling post office, installed on the coasting steamer "Esja" in 1925. As of 1926 the post owned only two of the buildings used by the postal service: the General Post Office at Reykjavík, and the post office at Akureyri. Everywhere else the premises were provided by the postmasters, who received a small consideration as rent.

Volume

The UPU report noted that, by 1926, every locality in Iceland received at least 30 mails a year, or one every 12 days, though in the more populous parts deliveries were more frequent, especially in the summer. During the period of 1906-26, the volume of mail increased even more than the personnel of the postal service. In 1906, 365,069

articles were posted, swelling by 273% to 1,363,300 articles in 1926. The international service grew comparably, the total articles dispatched growing from 81,830 in 1906 to 324,700 in 1926 and the total articles received from abroad growing from 226,796 in 1906 to 684,100 in 1926. The total volume of postal traffic for Iceland grew 252% from 1906 to 1926.

Staff

The staff of the Post increased from 334 in 1906 to 615 in 1926, by which time there were a Director General of Posts, a postal secretary, four postmasters, three head clerks, 50 postmasters in sub-offices, eight clerks, 203 managers of post depots, 11 town postmen, one house-porter, 184 managers of post-stations, and 149 rural postmen. Despite this organization the staff had a distinctly "volunteer" or "part time" cast. Only 5% of the staff in 1926 were employed exclusively in the postal service, the remainder recruited among the inhabitants of the different localities, preference given to those of better education. Some of the managers of the post-stations were honorary employees. The Post did not provide professional instruction for its officers, but it created a traveling fund in 1923 to make available subsidies for postal officers wishing to study abroad.

Budget

The heavy expenses caused by the reorganization and expansion of the post caused deficits to appear in 1914, compounded perhaps by the outbreak of war on the continent. Nevertheless, postal rates were not increased in time to offset the increased expenses, and for the next ten years deficits continued to plague the post. In 1924, however, a considerable surplus of 97,889 kronur was recorded, which went a long way to canceling the accumulated deficit of 227,035 kronur, and the continued robustness of the post in the next few years steadily whittled down the remaining deficit.

Customs

Since 1920, the post had undertaken

to collect the customs dues on imported goods in the mails. These dues were represented by postage stamps affixed to the articles. As the sums collected in that way did not enter into the accounts of the postal administration, the sale of postage stamps was thus greater than figures indicated. This explains why higher values in used condition are not as rare as would be expected had they been used for strictly postal purposes. (Note: The stamps used to defray customs duty are generally canceled with an obliterator bearing the word "Tollur" [FACIT cancellation type I]. Those so canceled vary considerably in price from postally used specimens.) The total amount of customs dues collected by the post in 1920 was 28,098 kronur. The revenue from customs dues collected by the post grew by leaps and bounds, reaching the extraordinary sum of 247,509 kronur in 1926, which represented 36% of the total value of all postage stamps sold that year.

Conclusion

In today's mechanized world, it is often difficult to appreciate the hardships encountered by early postal carriers in Iceland, whose sparse population and harsh northern climate in an area the size of Virginia imposed uniquely onerous challenges of delivery. The photographs reproduced in Sefi (1928), though of poor quality, show some of these problems, including a mail caravan fording a river, mail on horseback trudging through the snow, and horse-drawn carriages passing along rugged mountain roads. Transport was at the very least uncomfortable and, more often, a hardship. The difficult terrain and long distances between the inhabited areas made the construction of roads comparatively more expensive than in thickly settled countries on the main land.

A great and far-reaching change took place in the Icelandic Post in the 150 years from its inception in 1776 to 1926, an annual mail boat run transformed into a full service post, the administration transferred to the country itself,

the postal network considerably enlarged, and new post offices organized, all in the face of a forbidding climate and terrain, and it has continued since then to be an evolving and high quality institution worthy of the pride invested in it by the government and people of Iceland.

Sources

Much of the information for this article was presented in English to the philatelic press by Sefi, A.J., "The Post in Iceland," The Philatelic Journal of Great Britain, Dec., 1928, pp. 244-7. Also consulted were Wellsted, W.R., S. Rossiter and J. Flower, The Stamp Atlas, New York, 1987, and FACIT Special 1991, Stockholm, 1991.

1. [Editor's Footnote]

First-class offices

Sub-offices — Secondary (Postal Delivery)

Would be called provincial post office except that some provinces had more than one at the same time. These post offices are major offices in the system: through which mail from or to local Collecting offices must pass.

Depots — Collecting office

Post stations — Calling place

* S * C * C *

Who's He? Niels Stensen



There is a cliff in Denmark where one can see the geological ages in the rock looking up the cliff from bottom to top.

That geographic advantage led Niels Stensen to be the first to make explicit the connection between rock layers and time in earth history. This is fundamental to today's earth science.

The September 25, 1969 issue date for this stamp celebrated the 300th anniversary of his work.



What's Happening in Finland

By Mike Hvidonov

The NORMA Catalog

Fresh from the press, a copy of NORMA arrived at my home late last year for 1994-1995.

The passing of the incomparable Ilppo Ylismaa detained an earlier printing. Happily the book is reproduced beautifully under the guidance of Tapio Ylismaa who apparently is well able to cope with the vast details of running a busy shop while supervising the layout and details plus the printing and mailing of auction catalogs so essential to profit margins and keeping the fans of NORMA happy. I must add that the many color illustrations were superbly rendered and to some degree better than some of the prior issues which were made in years gone by.

His first auction was admirably laid out for purposes of clarity. I had one bid and another friend of mine a second. Both offers were awarded at less than the quoted prices and the material along with an invoice arrived promptly after the sale. Good Work!

The text is, as usual, in both Finnish

and English. Ilppo had agreed after much pushing by me to change from Finnish/Swedish to Finnish and English. The text is quite thorough and lucid when studied. The massive changes in the text for the 1875-1882-1885 emissions which were completely altered for the production of Book III, *Suomen Postimerkkien Käsikirja (Handbook of Finnish Stamps)*, which was translated to English by my wife and me after several hundred hours of intense work which happily resulted in a wonderful reprinting. The conversion of virtually all of the Finnish text was written by HERBERT OESCH (a wonderful philatelist) with some assistance from Mr. Reinikainen.

I am not clear on the cost of NORMA and shipping nor the Finnish Banks money conversion taxes on checks or other methods of payment but I believe the charge for the book is about \$30 to \$35. However, I have not confirmed this.

Happy New Year and look for more next time!

Sweden Post Surveys Favorite Themes

Sweden Post recently completed a survey which sought philatelic postal customers' favorite motifs.

The results? Take a look (there was a big tie for sixth):

1. Flowers
2. Birds
3. Art
4. Sports and liesure
5. Royalty
6. Nobel prize
6. Mammals
6. Ships/Seafaring
6. Slania engravings
7. Famous persons

Anyone who has followed Swedish current issues has noticed Sweden Post may have known these results before the survey. Flowers have done well. Waterfowl are everywhere, an art issue seems annual, and so forth.

The survey did show that about 58% "systematically" collect Sweden Post issues; obtaining one each of everything for their collections.

I am one of those but I think I wouldn't systematically collect every issue if the stamps weren't so attractive.

— John Lindholm

Finland's Coat of Arms Issues: A Review

by Alan Warren

Finland: The Color and Printing Identification of the 1875 Issues: A New Approach in two volumes by Herbert Oesch, translated into English by Kauko I. Aro. Vol. I, 7 by 10", softbound, 118 pages; Vol. II, 8-1/2 by 11", hardbound, 454 pages; Scandinavian Philatelic Foundation, 1994, ISBN 0-936493-17-8.

Handbook of Finnish Stamps Vol. III in Finnish and English, by Herbert Oesch, Heikki Reinikainen, and Juhani Olamo; English text translated by Anneli and Michael Hvidonov. Hardbound, 7 by 10", 232 pages, Philatelic Federation of Finland, 1993, ISBN 952-9677-24-3.

For those who collect the coat-of-arms type stamps of Finland, we have two works that describe these issues in great depth. The Scandinavian Philatelic Foundation's volume addresses only the 1875 issue whereas the Finnish Federation book discusses the 1885 issue as well. These two issues are also known as the 4-numeral issues as the value numeral appears in all four corners within a circle.

Herbert Oesch is the expert on the 1875 issue. He has written extensively about it not only for the two editions of the Finnish handbook but also individual articles, some of which have been translated into German. In the SPF work Oesch provides somewhat more detail than in the Finnish handbook for each of the printing emissions. In both cases the earliest known cancellation date is given.

The Foundation's book has an added bonus with 47 photographic plates

which help one to identify the various printings. Appendices in the first volume address the identification of forgeries including forged perforations, and how to go about detecting the forgeries. The second volume of the SPF publication provides an alphabetical listing of town cancellations and a reverse listing to help identify partial cancels. The bulk of this second volume is devoted to tables listing details of the deliveries from the printer to the post office. The town cancels are also illustrated.

The Finnish handbook volume goes on to the second series from 1885 -- 1889. Following general discussions of printing, cancellations, perforations, paper, and gum, the text treats each printing for each value. Some nice covers illustrate usages.

The volume concludes with rates during this period, a list of post offices between 1875 and 1890, delivery tables and a bibliography. Twelve pages of color plates illustrate some of the usages of these stamps. The Finland handbook has the Finnish text on the left hand pages with the English translation on the right. Note that in the Finnish text, dates are given in the European style whereas in the English text, the dates appear with the month as the first figure.

With these volumes you will have all the information you need for specializing in the coat-of-arms 4-numeral issues of Finland.

* S * C * C *

Florida West Coast Stamp Expo

Our 1995 show will be held at the Florida State Fairgrounds Special Events Center — conveniently located at I-4 and US-301, Tampa, Florida September 22-24.

We'll have over 20,000 square feet of unobstructed exhibition space: we're planning for 300 frames, 45 dealers, and a court of honor.

Vic Engstrom continues as chairman of judges. Remember, this is still beach weather. Inquire at: Florida West Coast Stamp Expo, PO Box 532, Crystal Beach, FL 34681.

Welcome to the Leading Norwegian Stamp Auctions!



Twice a year we arrange a public auction in Oslo as we have been doing for some 15 years. The total turnover has been some NOK 10 millions a year. Each auction contains approximately 1100 lots with starting prices from NOK 100.

Our most expensive item was sold for \$125,000 in 1987; Norway No. 1 in a block of nine from the world famous "Vi King" collection formed by Mr. Jared H. Richter. This is a Norwegian all time high.

The auctions also include top quality objects from many other countries. The market for stamps in Norway is one of the strongest in the world, and this is reflected in the prices realized not only for Scandinavian items. Our computer systems includes some 18,000 customers worldwide and we believe our selling potential would be most interesting also for vendors abroad.



We would be happy to serve you. Drop us a line - or a fax or give us a call for a free copy of our auction catalogue or for further information.

Elisenbergvn 19 N-0207 OLSLO 2
NORWAY. Phone 47-2-441914
FAX 47-2-560404

Iceland Postal Stationery and Danish RPO Cancels:

Book Reviews

By Alan Warren

Island Ganzsachen 1879-1941, Heinrich Schilling, 6 x 8-1/4 inches, saddle stitched, 70 + vii pages, soft covers, in German, Forschungsgemeinschaft Nordische Staaten, Germany 1994.

De Danske Jernbanebureauer og deres Stempler Part 1: Øerne, Svend Hovard, 6 x 8-1/4 inches, perfect bound, 256 pages, soft covers, in Danish, Forschungsgemeinschaft Nordische Staaten, Germany 1994.

The FG Nordische Staaten is the society for collectors of Scandinavia in Germany. The organization publishes a journal and also separate monographs from time to time. The latter are sent to members as part of their membership dues, but copies of the books can be ordered directly. Information about the society can be obtained from Roland Daebel, Stolzenhagener Weg 4, 16515 Wensickendorf, Germany.

The Iceland postal stationery catalog is a descriptive one, not a priced catalog. Valuations are not included. It is meant to show the major varieties found on the postal cards of Iceland. The listing includes single cards, double cards, and letter cards. Since the survey ends in 1941, aerograms are not included.

The illustrations are somewhat faint in many cases, but detailed enough to understand the varieties mentioned in the text, which is in German. A listing concludes

the booklet with cross-references between the catalog numbers in the Swedish Handbook, Ringström, FACIT, and Michel.

For RPO collectors the railway cancels handbook will be an important tool. There are some 1500 Danish railway cancels identified. Although the text is in the Danish language, the tables are straight forward and easy to follow. Each section carries a map with the railway lines shown which are under discussion. The tables show the inscription, type, and size of the cancel, followed by the earliest and latest known dates. These dates are compared with the dates that the lines were established and discontinued.

The tables are easy to read and the cancels that are illustrated are for the most part quite clear. Introductory material describes the railway cars and the various kinds of cancels including the major types of bridge cancels. There is also a discussion of other types of markings found on railway covers such as registration and "fra" marks. The index to the listing of railway lines appears on page 61 and shows how the bulk of the handbook is organized.

The book concludes with an alphabetic listing of the cancel inscriptions followed by a listing of the mute, numeral, and combined cancels. This is a very thorough monograph for the Danish railway specialist.

* S * C * C *

Finlandia 95

May 10-15, Helsinki, Finland

There will be SCC members at Finlandia '95. If you can go please contact Roger Quinby, 5 Oak Tree Lane, Schenectady, NY 12309-1801 right away. Roger is our US commissioner for this important show.

Two Volumes of Classic Denmark: A Review

by Alan Warren

Danske Frimærker: Kvadratiske Udgaver, 1864 Udgaven, Tofarvet Udgave by Lasse Nielsen, hardbound, 7 by 10", 112 pages, Kjøbenhavns Philatelist Klub, 1993, ISBN 87-983015-2-7. *4 Skilling 1864* by Lasse Nielsen, hardbound, 7 by 10", 200 pages, Kjøbenhavns Philatelist Klub, 1992, ISBN 87-983015-1-9.

Lasse Nielsen has pulled together two volumes of studies on the early issues of Denmark. Much will be found here for the specialist, and the first book, which covers the squared stamps, the 1864 issue and the bicolor oval issues, contains wonderful color illustrations. Thus the beauty of these stamps can be seen by many who cannot afford to collect them.

After giving credit to the earlier work of Hagemann, Schmidt-Andersen, and Schäffer, Nielsen presents these issues with descriptions of the printing technique, the burelage, the frames of the bicolor stamps, perforations, and watermarks. The illustrations for each issue give us a glimpse of the different printings and the principal color variants.

A table for each issue indicates the number of printings, the number of stamps printed, delivery dates, perforation and watermark varieties. The tables also indicate the different numbering systems such as the printing numbers and those numbers assigned by Thiele. The quality of the printing and the color illustrations is excellent. What we have in this book is essentially one's very own reference collection, so that printing and color comparisons can easily be

made in one's own home.

An added bonus is that all of the stamps illustrated are used. There are some wonderful cancellations seen here which could be studied on their own, but that subject is beyond the scope of this book.

In Nielsen's second book he takes one of the issues described in the first volume, namely the 4 skilling 1864 issue, commonly known as the crown and scepter stamps. The 4 skilling was the normal rate for letters sent out of town. The color plates from the first volume have been used again in the second book with two more color varieties added.

Nielsen goes into more detail on the printing method used to produce the 4 skilling stamp in his second book. Four pages are devoted to proofs of this issue and a nice illustration is given of a double print. Paper, watermarks, and perforations are given more attention than in the first book. Separate chapters address cancellations and usages for this stamp.

About half of this second book is devoted to illustrations and descriptions of the plate flaws and their identification by printing and sheet position. The illustrations are excellent, enabling one to locate the flaws easily. Both books are in Danish. The second volume concludes with brief summaries in English (Jesper Haff) and German (Arno Debo). Both books are recommended for your permanent library on the classic stamps of Denmark.

* S * C * C *

Dues

Are Due!

Send to Bob Lang:

PO Box 125

Newark, DE 19715-0125

The 1994 Election of Officers

A total of 304 ballots were cast. Votes were counted and tallied by Ross Olson, Pres. Chapter 14, Dennis Abel, VP #14, and Bob Frigstad, election chairman. In the contested election, that of two year directors, the difference between being elected and not being elected was three votes — a 1% difference. There were a handful of write-ins as well.

The following officers will be serving the SCC in 1995 and beyond:

President:	Paul Nelson
Vice President	Dr. Warren Pearse
Vice President for Chapters	Reino Merikallio
Secretary	Jared Richter
Treasurer	Howard Schloss
Two Year Directors	David Anderson
	Roger Quinby
	Wayne Rindone
Four Year Directors	Glenn Hansen
	Anders Melberg
	Robert Paulson

Thanks to all the candidates and all those who serve SCC.

SCC Annual, Regional & International Meeting Schedule

	Annual Meeting	Regional Meeting	Intern'l Meeting
1995	PHILATELIC SHOW Boxborough, MA April 28-30	APS STaMpsHOW St. Louis, MO August 24-27	FINLANDIA '95 Helsinki, Finland May 10-15
1996	ROMPEX Denver, CO Mid May	APS STaMpsHOW San Diego, CA August 22-25	CAPEX '96 Toronto, Canada June 8-16
1997	VAPEX Va. Beach, VA Mid November	APS STaMpsHOW Milwaukee, WI August 21-24	PACIFICA '97 San Francisco, CA May 29 - June 8
1998	CHICAGOPEX Late October	APS STaMpsHOW Late August	
1999	Invitation Received	APS STaMpsHOW Late August	
2000	WINNIPEG, MB Early July	APS STaMpsHOW	

Support Our Advertisers!



Scandinavian Literature Notes

By Alan Warren

In the December issue of *The Airpost Journal*, published by the American Air Mail Society, Ian McQueen describes an unusual "Jusqúa" marking on a Danish cover. It is a boxed mark which reads "Par avion / Jusqúa London." McQueen speculates it may be a private marking rather than an official one of the Danish post office. It appears on a 1945 cover from Privatbanken in Copenhagen. McQueen is the author of *Jusqúa Airmail Markings* and invites those with information on markings not found in his book to write to him at 55 Albany, Bournemouth BH1 3EJ, England.

NORDIA 94

The catalog from this Nordic country show which was held in Århus, Denmark last October contains a number of interesting articles. Keld Valbæk writes about the postal history of Århus, Ólafur Elfasson discusses domestic mailing of packages in Iceland up until 1940, Otto Kjærgaard describes the cryolite mining operation at Ivigtut in Greenland and correspondence related to it, and John M. Fredriksen provides a survey of the town of Bergen and its relation to stamps.

The articles touch on all of the major Nordic countries. Juhani Pietilä summarizes postal connections between Denmark and Finland over the last one hundred years, and Erik Hamberg illustrates four early Swedish covers with incorrect franking. A copy of the NORDIA 94 catalog is in the SCC library.

In the December issue of *Luren*, Will Ross presents another viewpoint on Rockwell Kent and the Greenland airmail "stamp." While on the subject of Greenland, author Christer Brunström discusses the Europa issue of that country in the August issue of *Global Stamp*

News. The two stamps mark the Danish 1906-1908 expedition to Greenland by Ludvig Mylius-Erichsen.

Iceland Cancels

In the September issue of *Scandinavian Contact* from England, authors Brian Flack and David Lee give an overview of the crown and posthorn cancels of Iceland during the period 1894-1903. In the same issue W.J.D. Annand delves into the plate flaws of the perf 13 12 öre ring type stamp.

For RPO enthusiasts, Svend Hovard takes the reader through the various types of railway cancels of Denmark in the September issue of *Dansk Filatelistisk Tidsskrift*. In the October issue Torben G. Rasmussen illustrates the "fri-correspondence" cards of Denmark during the period 1889-1919. In the December issue of the same journal, editor Lennart Weber reports on the Danish federation meeting held in Faaborg where club representatives discussed the future of the federation. He also reports on the NORDIA 94 show.

With the October issue of *Nordisk Filatelistisk Tidsskrift*, Max Meedom steps down as editor and is replaced by Palner Rundstrøm. Lasse Nielsen describes the appearance of the burelage on the back of some 1858 4 skilling stamps of Denmark in the October issue of *NFT*. Henning Nielsen reviews printing methods of Danish newspaper wrappers and Svend Hovard summarizes the railway cancellations of the Fredericia-Struer line in the 19th century.

Danish Newspaper Stamps

In the August issue of *Posthistorisk Tidsskrift*, Karsten Hagsten describes the newspaper stamps of Denmark 1902-1918 including first day cancellations of some of the values. Kristian Kristensen continues the series of ar-

ticles on the war of 1848-1850 and its effect on the mails. In an illustrated article in the October issue of the same journal, Ole Aagaard Frandsen describes some covers sent between Denmark and Sweden during the latter half of the 19th century. Kristian Kristensen describes ship mail from Iceland to Vejle, and Erling Berger shows transit markings in Denmark for mail going in and out of Norway during the period 1814-1868.

In the August issue of *Philatelistische Nachrichten* from Germany, Andreas Kessler discusses the design and printing of Denmark's 10 øre Arms type stamp. Günter Pansegrau examines the lion issues of Finland under an ultraviolet light. In his continuing series on Greenland expeditions and their mails, Rolf Dörnbach relates the story of the Scottish trek in East Greenland in 1963. The same author provides some further gleanings from the literature on the aerograms of Iceland. Prolific author Dörnbach also contributes an interesting article in this issue on the background and posts of the Swedish colony St. Barthélemy.

Danish Cancellations

In each issue of the Danish publication *Skilling*, Vagn Jensen lists the cancels of Denmark alphabetically by town name. The October issue covers Fredensborg and Fredericia, and the November issue completes the latter and goes on to Frederikshavn. In the November issue of the same journal Carl Jørgensen writes about the Danish

stamps that bear the unusual marking on the back, "Please take notice of wild birds wearing rings. Inform exactly (*sic*) P. Skovgaard. Viborg. Danmark."

Birger Løvland writes about the postmarks of the Dovrefjell/Rondane area of Norway in the issue 94-3 of *Frimerke Forum*. For the topicalist, Per Brønstad lists the town names in the United States that have Norwegian counterparts in that country. Editor Sven Bølum discusses the postal history of Aker in the same issue.

In the October issue of *Svensk Filatelistisk Tidskrift* there are reports on the FIP Congress at PHILAKOREA and the Swedish exhibitors at that show. Reports on NORDIA 94 are recorded in the November issue, and Arne J. Bay writes about letters to and from Norway in the 19th century with contents of value.

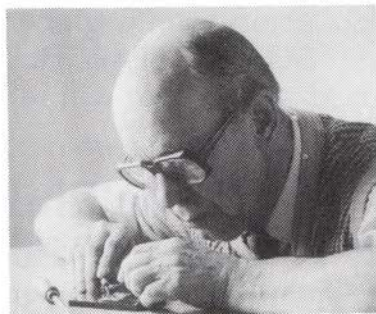
Schleswig

Frank Correl has a lengthy article on "The Slesvig Plebiscite Era" in the November issue of *The American Philatelist*. In the October issue of *Het Noorderlicht* from Holland, J. A. Konings continues his discussion on the 21 mm posthorn issues of Norway. In the same issue C. Szerkowski comments on the 1975 town cancels of the Faroes. *Postal History*, published by the Postal History Society in Great Britain, carries the first part of an article on "The Thirty Years' War and Swedish Pomerania" by Alan A. Spencer in the September issue.

* S * C * C *

Slania's 900th

I don't think we can say anything that hasn't already been said about the world's most prolific stamp engraver. We probably should point out, however, that the October, 1994 World Wildlife Fund's sea eagle stamp of Sweden was Slania's 900th.



The world's most prolific engraver at work.

Transfers & Re-entries

by Alan Warren

At the Postiljonen auction in Malmö last October, a significant Finnish error was sold for about \$12,000. The item was a post card franked with a copy of the 1930 ZEPPELIN overprinted stamp for use on the visit of the Graf Zeppelin to Helsinki. The error, which appears in position 86 in the sheet, reads "1830" instead of 1930. Shortly after the stamp was issued, the error was discovered and copies were removed from sale.

However, a number of mint copies survived, and a very few used copies. Copies of the error on cover are quite rare. In this case the stamp is properly used on the flight from Helsinki to Germany on September 24, 1930.

NORDIA 94

The 1994 annual nordic federation show was held in Aarhus, Denmark October 21-23. The Grand Prix

NORDIA 94 was won by Kurt Hansen for "Postal Declaration of March 11, 1851." The Grand Prix National went to Leif Christensen for "Danish Skilling Issues 1851-1874," and the Grand Prix Nordic went to Indridi Pálsson for "Ice-land Postal Service 1836-1902."

Gold medals were received by F. C. Moldenhauer, Jr. for "Markings on Norwegian Prestamp Letters 1845-54 to and from Foreign Countries;" Hans O. Solbakken for "Norwegian Postal Documentation and Interpretation 1624-1855;" Antti Haggrén for "Finland 1644-1884;" Bo Tigerschiöld for "Classic Sweden Canceled and Uncanceled;" and Lasse Nielsen for "4 Skilling 1864."

The "medals" for each winner consisted of a lovely bronze stamp box to which a replica was attached for a 4.75DKr NORDIA stamp in the

SPECIALISED SCANDINAVIA

A new range of services from

ACORN PHILATELIC AUCTIONS

1. Regular **POSTAL AUCTIONS** (4 sales per year) of around 250 lots ranging from £30 to £500.
2. A "**WANTS LIST**" Service catering for the needs of collectors from Beginners to Specialists.
3. **LITERATURE SEARCH.** We will occasionally be offering books for sale or will seek out more elusive items.

Write now with details of your requirements to:

Acorn Philatelic Auctions

27 Pine Road, Didsbury, Manchester M20 6UZ

Tel: 061-434 2580

Fax: 061-877 8819

appropriate metal. There were 47 entries in the literature section. SCC's *The Posthorn* received a silver, as did also the Scandinavian Philatelic Foundation's translation of the *AFA Specialized Catalog 1987-88*.

NORDIA 95

In the meantime plans are well under way for the next NORDIA show which

will be held October 27-29, 1995 in Malmö, Sweden. President of NORDIA 95 is Mats Gustafsson of the Malmö Philatelic Society. Commissioners for the show are Hasse Brockenhuus von Löwenhielm of Sweden, Erik Hvidberg Hansen of Denmark, Pekka Taitto of Finland, Jón Adalsteinn Jónsson of Iceland, and Eivind Evensen of Norway.

* S * C * C *

AFA Special Catalog: A Review

by Alan Warren

AFA Specialkatalog 1995, hard-bound, 6 by 8-1/2 inches, 720 pages, Aarhus Frimærkehandel, Århus, Denmark 1994. \$74.95 postpaid from Jay Smith & Associates, Box 650, Snow Camp, NC 27349.

Every five years AFA publishes its splendid detailed catalog of the stamps of Denmark, Faroes, Greenland, Danish West Indies, Schleswig-Holstein, and this year, Iceland. The 1995 version is again a delight to behold with its listing of major plate flaws and, for the older issues up to 1930, values for mint, unused, used, used with select cancel, and on cover. One nice touch is that beginning with the Vitus Bering issue of 1941, first day cancels are shown for each issue. These become more interesting in 1968 when pictorial cancels came into use.

A glossary of terms begins the edition again. The listings for Denmark take over 400 pages alone and go up to the issues of August 1994. The catalog also covers Christmas seals, officials, military stamps, postage due, late fee stamps, the postal ferry issues, newspaper stamps, vending machine stamps, advertising stamps, and booklets.

Following Denmark the other countries mentioned above are listed in excellent detail as well. However, the section on Iceland is not only detailed but is probably even more useful to specialists than FACIT. Major varieties of the early issues are listed and illustrated, including the officials. The AFA listing for Iceland stops with 1943. For issues

of the country as an independent republic, the collector is referred to the *AFA Skandinavien Frimærkekatalog*.

It is the special sections which appear at each of these 5-year intervals that make this AFA catalog even more valuable. The special sections are always different. It is necessary to obtain each special catalog in order to have a good library of reference material.

The first special section is devoted to the numeral cancels of Denmark. Valuations are given for use of the numeral cancels (also includes mute cancels) on specific issues such as the 4 RBS, the 1854 4 skilling, the 1858 4 skilling, etc. For the later period numerals the listings also include their use on the 1875 øre issues and after 1884.

Following the Danish numerals there is a nice listing of cancellations of the Faroes with valuations on piece as well as on complete cover. Then there are several pages of rate tables for Denmark covering the period from 1851 right up to 1994, which will be useful for postal history studies.

Henning Nielsen contributes a chapter on plate flaws of the 20 øre Arms type stamp. The final special section, authored by Peter Schweizer, reviews the printing methods used for Denmark's stamps. Although the text of the catalog is in Danish, there is a Danish-English list of terms. Illustrations throughout the catalog are quite good. Highly recommended for the collector of Denmark and the associated areas.

SCC National Meeting at Philatelic Show '95

Boxborough, MA April 28-30, 1995

As previously announced, the 1995 national convention of the Scandinavian Collectors Club will be held at Philatelic Show '95 April 28 to 30, 1995, in Boxborough, Massachusetts. This meeting is at the same location as the 1990 national meeting, but the hotel where the show is held has recently changed its name. It is now called the Boxborough Holiday Inn, located at the interchange of Interstate 495 and Massachusetts state route 111. The hotel's phone number is (508) 263-8701, and their 800 number is (800) 253-6296.

There will be three SCC activities in connection with the Show. The first is an SCC dinner the evening of Friday, April 28. There will be a meeting of the new SCC Board Saturday morning, April 29, and a general membership meeting that afternoon at 3 p.m. All three of these activities will be held right at the show hotel.

For the SCC Dinner on Friday, April 28, we are pleased that SCC Librarian Doc Melberg (more formally known as Dr. W. E. Melberg) will present a program on "What to collect in Scandinavia when you have run out of things to collect." If you have heard Doc speak before, you know he might well have some surprises up his sleeve.

We must give the hotel guaranteed minimum counts for the banquet a week before the meeting. The cost of the meal will be no more than \$25 (plus whatever you purchase at the cash bar), payable at the banquet. But for purposes of the count, please write and state your intention to participate no later than April 1, 1995. Please send your note to Wayne Rindone, P.O. Box 276, Newtonville, MA 02160 or call me at (617) 2180.

Many thanks for helping us provide an accurate count.

At the general meeting that Saturday afternoon, we will have one or two Scandinavian slide programs to present that most people probably have not yet seen, thanks to the assistance of our friends in Chapter 13.

The hotel will have a special show rate for rooms. You can write to Wayne Rindone for reservation cards as well as information about other somewhat less expensive hotels that are not too far away. Transportation to Boxborough, if you are not driving, typically involves a limousine service or rental car. Information about that will also be provided on request.

Finally, at this writing (end of year), there is still ample space available in both the Show Exhibit and the single-frame SCC mini-competition. Applications are coming in later, in particular for Scandinavian exhibitors, than in most recent years. We no longer have guaranteed space for SCC members, but there is some chance there will still be space in the main exhibit and near certainty there will be space in the single-frame competition by the time you read this. To inquire about remaining exhibit space and to request a show prospectus and application, write to Philatelic Show Exhibits Chairman: Dr. Guy R. Dillaway, P.O. Box 181, Weston, MA 02193 or call him at (617) 899-1181. To enter the single-frame exhibit, simply send in the brief form that was printed in the August 1994 Posthorn.

We look forward to seeing you (and your exhibit if possible) at Philatelic Show '95.

* S * C * C *

Collectors' Forum

Those Norwegian Posthorns

Dear Sir:

I would like to know where I can get an opinion or certify Norway stamps.

I have a mint FACIT #63 or could it be 58v4, 63 or 69? How do you know?

-- Arnold Niemiaho

You may be wondering if you have NK 54 IIb (using Norgeskatalogen numbering). It seems to me that FACIT is not aligned with the latest scholarship on this issue.

The steps involved in classifying these stamps are: 1) make sure that the perforations are 14.5x13.5 and the design is 20mm, then 2) check the design details of the numbers of value in the large oval against the quite good type illustrations in Norgeskatalogen.

Should you wish your stamp expertised I would recommend Hans J. Enger, N-2824 Redalen, Norway. He charges 150 NKR per stamp for a photo certificate, but a classification according to Norgeskatalogen costs only 5 NKR per stamp with a 50 NKR minimum, while classification as to dies, types and plate positions costs 20 NKR. [as of last spring] — R. B.

WWII Swedish Airmail

Some Swedish air mail sent to the U.S. between September 1939 and 8 December 1941 have a cachet reading "By air over the Atlantic and from New York." Did such covers go through Germany to Lisbon in order to be carried on the PANAM Clipper flights?

Also, some Swedish covers and some Scandinavian covers addressed to the U.S. that passed through Sweden have the cachet "North Atlantic Air Service." Did covers with this cachet also go to Lisbon via Germany?

Any members who specialize in this area and who would be willing to help me obtain answers to questions I have on Swedish air mail covers addressed to the U.S., I would appreciate your assis-

tance.

Thomas H. Boyle, Jr.
3750 Chatham Circle
Norfolk, VA 23513

According to Örjan Luning's The History of Airmail in Scandinavia the marking "By air over the Atlantic and from New York" does represent mail sent via Lisbon but no information is given on whether it was sent via Germany or from Lisbon via PANAM Clipper flights. -- J.L.

Scandinavian Area Awards

At the St. Louis Stamp Expo 94, Marvin D. Hunewell received a silver for his new exhibit "A Look at Danish Railway Post Offices." Jim Burgeson's "Sweden Ring Type Stamps and Cancellations 1872-1891" received a silver at SESCAL, and *The Posthorn* won a silver also in the show's literature competition.

Last August at PHILAKOREA, SCC past President Roger G. Schnell won a large gold as well as the Grand Prix International with his "Danish West Indies, 1748 to 1905." The American Air Mail Society recently presented its L. B. Gatchell literature award to Egil H. Thomassen for his 2-part series on "Classic Norway Airmail" which appeared in the society's *Air Post Journal*.

At CHICAGOPEX's literature competition, SCC's *The Posthorn* received a silver, and the Scandinavian Philatelic Foundation's new 2-volume work on *Finland: The Color and Printing Identification of the 1875 Issues* won a gold. Thorvaldur Johannesson received a silver at INDYPEX for "Iceland: First Flights and Airmail 1961-1990." Michael E. Falls received a silver-bronze for his "Icelandic Airmail" at VAPEx.

At the ASDA Mega-Event in New York, Roger Quinby won a gold along with the APS 1900-1940 medal for his "Finland's 1918 Vaasa/Wasa Temporary Wartime Issue."

—Alan Warren

ICELAND SWEDEN

**LARGE
STOCK
including
the . . .
RARITIES**

*Send for my
FREE
PRICE LIST!*

KARL A. NORSTEN
Box 907, S-181 09
Lidingo, Sweden
Fax 011-46-8-731-0244

DO YOU COLLECT SCANDINAVIAN STAMPS & POSTAL HISTORY? ARE YOU A SPECIALIST?

WHAT IS A SCHIFF "ESPECIALLY FOR SPECIALISTS"® AUCTION?

It's an auction designed with YOU in mind. Whether you are a buyer or a seller — each specialized area of collectin is listed in a separate section, making it easier for BUYERS to locate lots of particular interest and for SELLERS to realize maximum exposure for their material.



CATALOGS	N. AmericaOverseas	
	Address	Address
1 Year with Prices Realised	10.00	18.00
1 year Catalogs only	7.50	15.00
1 Catalog with realizations .	1.50	2.50
1 Catalog Only	1.00	2.00

We invite you to consign individual stamps or covers, entire collections or estates — for unre-served Public Auction or Private Treaty Sale. WE ALSO PURCHASE OUT-RIGHT! Contact us first describing your material include your address and telephone numbers.

Jacques C. Schiff Jr., Inc.



195 MAIN STREET
RIDGEFIELD PARK, NJ, USA 07660
Phones (201) 641-5566 — From N.Y.C. 662-2777
Licensed & Bonded Auctioneers — Established 1947



Roger Swanson's "I Gildi" Collection Inspires Bidding

The late Roger Swanson's outstanding "I Gildi" collection was featured in the November 12, 1994 sale of Northland Co. Some startling prices were realized. The auction room was filled to capacity and included four auction agents representing buyers from around the world.

Some examples of prices realized include: Scott 45c, the '03-'03 variety, with a cat. value of \$32.50 realized \$140 (all prices include buyer's commission); Scott 46d, the 02-'03 variety, cat. val. \$90 went for \$180 although a second copy only realized \$62. A fine copy of Scott 55a, inverted overprint, cat. \$24 realized \$135.

Even the non-varieties brought very good prices. The rare Scott #56 with certificate, cat. \$4500 brought \$4500. No. 63 in a pair with 63b, the 02-'03 variety, with certificate, brought \$1400 versus a Scott value of \$875.

Covers and cards with this issue are very scarce. They are not priced in Scott but FACIT prices most of them at



5000 to 7000 SKr although many of these stamps are only 50 to 100 kr. used but *not* on cover. There were about 17 such items in the sale, bringing from \$280 to \$2925.

This "emergency" overprinting was entrusted to a local print shop in Reykjavík, which, probably due to a shortage of type, used two different kinds of "0"s, "I"s and apostrophes. This, plus a few intentional (?) or accidental errors in typesetting has led to many minor and a few major varieties in this issue and has been responsible for the interest and study of these stamps

— Robert D. Lipscomb

Citymail Takes Sweden Post to Court

The privatization of Sweden's postal service has not been filled with successful competition. Sweden Post still delivers 100% of unsorted mail. Citymail has only 1.5% of sorted (business) mail. But Citymail only works in Stockholm where it has 15% of the market for pre-sorted mail.

To get a bigger share, Citymail has been suing Sweden Post for below cost price setting (including accusing the post of offering 20% discounts to companies which agree not to use Citymail).

Now, in the recent EU referendum ballots distributed by mail, Sweden Post apparently went to the Election Board and got a contract that included delivery in Stockholm by threatening that if they didn't get the Stockholm service prices would be higher for delivery to

the rest of the country (to the tune of 4 million kronor more). Citymail does not deliver outside the city and considers this unfair.

Citymail accuses Sweden Post of cherry picking the best accounts (here in the US many of us have predicted privatization would mean private companies would only deliver the profitable services and the United States Post Office would be stuck with delivering rural route post cards and going broke). It seems Sweden Post has used its size to dominate the market. Citymail claims misuse.

Why the fuss? The total Swedish market for distribution of addressed mail is valued at about eight billion kronor.

This information was gleaned from the December 11, 1994 Svenska Dagbladet.

— John Lindholm

The Scandinavian Collectors Club

—Founded, Nov. 25, 1935—

Elected Officers

- PRESIDENT: Paul A. Nelson, PO Box 310, Claremont, CA 91711
 VICE PRESIDENT: Dr. Warren Pearse, 350 South River Landing Rd, Edgewater, MD 21037
 VICE PRES. FOR CHAPT.: Reino Merikallio, 388 West Road, New Canaan, CT 06840
 SECRETARY: Jared Richter, 1353 Plum St., San Diego, CA 92106-2549
 TREASURER: Howard Schloss, 261 Congressional LN #705, Rockville, MD 20852
 FOUR YEAR DIRECTORS: Glenn Hansen, 113-211 Watson St, Winnepeg, MB, Canada R2P 2E1
 Anders Melberg, 9123 Stevenson #1F, Des Plaines, IL 60016
 Robert Paulson, 1179 Pine Ridge Cir. W. #A1, Tarpon FL 34689
 TWO YEAR DIRECTORS: David Anderson, 33780 Feldspar St. NW, Princeton, MN 55371
 Roger Quinby, 5 Oak Tree Lane, Schenectady, NY 12309-1801
 Wayne Rindone, PO Box 276, Newtonville, MA 02160-0276
 IMMEDIATE PAST PRES.: Dr. Roger G. Schnell, 4800 NE 20th Ter, Fort Lauderdale, FL 33308

Appointed Officers

- EXECUTIVE SECRETARY: Robert W. Lang, P.O. Box 125, Newark, DE 19715-0125
 HISTORIAN: Dr. Richard Collins St. Clair, PO Box 606, Cambridge, MA 02140-005
 LIBRARIAN: Dr. W. E. Melberg, Box 134, Allenton, WI 53002
 STAMP MART MANAGER: Eric Roberts, P.O. Box 460201 Galleria Sta., Houston, TX 77056
 APS REPRESENTATIVE: Jared H. Richter, 1353 Plum St., San Diego, CA 92106-2549
 PUBLICITY CHAIRMAN: Marvin D. Hunewell, P.O. Box 23959, St. Louis, MO 63119
 BY-LAWS CHAIRMAN: Chris McGregor, 6312 Carnarvon St., Vancouver, BC Canada V6N 1K3
 AWARDS CHAIRMAN: Ron Collin, PO Box 63, River Grove, IL 60171
 LITERATURE PROMOTION: Alan Warren, P.O. Box 17124, Philadelphia, PA 19105

Member Services Coordinators

- EXHIBITION COORDIN.: Dr. Jeffrey N. Crown, 850 Flagler, Dr., Gaithersburg, MD 20878-1946
 COMPUTER COORDIN.: Paul Helgesen 34 Plymouth Road, White Plains, NY 10603-1129

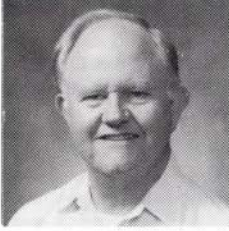
Staff, *The Posthorn*

- POSTHORN EDITOR: John Lindholm, 2316 Lakeview Dr., Fergus Falls, MN 56537
 BUSINESS MANAGER: E. A. Menninger, PO Box 457, Lillington, NC 27546
 NATION EDITORS & RESIDENT ASSOCIATE EDITORS
 POSTHORN COLUMNIST: Alan Warren, P.O. Box 17124, Phila., PA 19105
 CHAPTER NEWS EDITOR: Reino Merikallio, 388 West Road, New Canaan, CT 06840
 D.W.I. EDITOR: Dr. Roger G. Schnell, 4800 N.E. 20th Terrace, Ft. Lauderdale, FL 33308

- DENMARK & FAROES
 & GREENLAND EDITOR: Dr. Dan Laursen, 4901 East Eastland, Tucson, AZ 85711
 RESIDENT ASSOC.: Ingolf Nielsen, Reynstún 9, FR 160 Argir, The Faroes
 FINLAND EDITOR: Mike E. Hvidonov, 4 Dwight Lane, Great Neck, L.I., NY 11024
 ICELAND EDITOR: Bryan R.R. Whipple, 309⁷ Jaylee Dr., Santa Rosa, CA 95404
 RESIDENT ASSOC.: Sigurdur H. Thorsteinsson, P.O. Box 26, IS-222, Hafnarfirdi, Iceland
 NORWAY EDITOR: Roe C. Blume, 10 Chestnut St., Wilmington, DE 19810
 RESIDENT ASSOC.: Paul H. Jensen, Postboks 115 Kalbakken, N-0902 Oslo, Norway
 SWEDEN EDITOR: Paul A. Bergman, 875 Kenoza St., Haverhill, MA 01830

SCC Study Groups

- DWI STUDY UNIT: Dr. Roger G. Schnell, Chairman (see address above)
 REVENUES: Tim McRee, Box 388, Claremont, NC 28610
 SWEDEN - RING TYPE
 STAMPS: George A. Kuhhorn, P.O. Box 4486, Emerald Isle, NC 28594



President's Letter

By Paul Nelson

Many of you already know me, either personally or by reputation, based upon my many years of editing *Luren*, the newsletter from the Scandinavian Philatelic Library of Southern California, otherwise known as SCC Chapter 17. However, I'd like to brief you more on my background and on what I'd like to accomplish in the next few months.

I'm an engineer, presently assigned by my employer to a consortium of companies working to create a new international standard for the exchange of computerized product model data. This new standard is called STEP, and it has potential to revolutionize much of the way the business of industry worldwide is done.

This assignment has the side benefit, for me, of requiring frequent domestic and international travel. That means that you might receive a phone call a week or two before a trip, asking to get together with me for an evening chat to get your ideas about what we need to do for our mutual benefit. I hope to involve many members in the development of new and vital ideas to improve our organization. Write me with your ideas, please.

One of the concerns voiced during the discussion about the newly approved bylaws was the fact that chapters stand to lose their visibility in the national organization. I like to use an example of a ham and egg breakfast, where the chicken is involved, but the pig is committed. I believe that chapters, their members, and the many SCC members who don't belong to a chapter need to become more committed, not less involved.

The main short-term goal which I believe we need to achieve is to gain IRS approval for SCC as a recognized non-profit organization. Doc Melberg, the committed SCC librarian, has mentioned frequently that he has been approached by members and others who would like to provide financial support to the library, if they could get a tax deduction for their donation. To date, we've not been able

Who to Contact?

To become a member of SCC To pay dues To change address	Executive Secretary
To place ads, make payments or rate inquiries	Business Manager
To submit articles or ideas General articles Individual country articles	Editor, <i>The Posthorn</i> Nation Editors
To form a new chapter To get help for exhibiting To get help using computers	Chapter Coordinator Exhibition Coordinator Computer Coordinator

to offer that, but expect that we'll quickly apply to the IRS. I was instrumental in securing this IRS status for the Scandinavian Philatelic Library of Southern California, Inc. Further, as a Director of the Scandinavian Philatelic Foundation, another IRS-recognized organization, I've seen the benefits which having this tax structure offers to members.

Dr. Roger Schnell and his set of officers have done an excellent job during the past few years, and they set an example which will be hard to follow. Thanks to them, and congratulations as well to the rest of the new team of officers. Bob Lang, our Executive Secretary, has taken a tough job and made it into an even stronger center for the administration and management of our organization. I expect that Bob and the elected team will work together toward further growth and greater financial stability.

John Lindholm has made major improvements to *The Posthorn*. He's been equipped, during the last year, with a modern computer which is totally compatible with the system used by the publisher of the *Posthorn*. This has enabled him to provide us with an award-winning journal which continues to give our members the service we have expected. Recent criticism of the *Posthorn*, voiced at the recent NORDIA show in Denmark, spoke to the need for an increased scope of articles over the 1993 volume. John can't do this without input from everyone. We've got a unique opportunity to provide a wide range of subject matter on the philately of several fascinating countries and a wide range of philatelic specialties. These specialty areas range from "traditional" philately, including postal history and cancels, to such "newer" areas of interest as "modern philately," topical, postal stationery, revenues, even the phone cards which come from the PTT organization. We need to provide both specialized information as well as material more aimed at the collector who is just beginning to gain interest about Scandinavian subjects. Here is an outstanding chance to bring younger collectors into our area. How about someone providing a quarterly column aimed at youth, using some philatelic area which doesn't require much investment of funds but which provides a lot of fun and education?

Each of our members has something to contribute to the *Posthorn*; please become committed to provide short articles, questions, longer research articles, or other features. The country editors are listed in each issue, contact the one of your choice for further information.

John will be providing more pages in many issues of the *Posthorn*. With the modernization of its production, he's much better able to get the material to the publisher on deadlines, which will better enable the journal to enter the mail stream on schedule. That means that our advertisers can expect to have their material in the hands of our members on time, which in turn will better provide even more financial flexibility to John.

Thanks for your time in reading all this; let's work together for our mutual benefit.

News From the Home Office

By Bob Lang

Three years ago I became your Executive Secretary. In that time I have welcomed 174 new and several reinstated members to SCC. This past quarter we added 15 new members and two have been reinstated. To all of you I say "Welcome Aboard." Without this new blood our ranks would have dwindled to less than 800, rather than the 948 we have on the rolls at year end. Here is how we fared in 1994.

Member Type	1/Q	2/Q	3/Q	4/Q	Yr. Total
New	13	14	7	15	+49
Reinstated	2	1	5	2	+10
Resigned	5	0	2	7	-14
Deceased	1	2	1	6	-10
Dropped	0	46	0	0	<u>-46</u>
TOTAL CHANGE					-11

Each year we lose 70 to 75 for non-payment of dues, resignations and death. So it behooves us to keep prospecting for new members! We also need to provide our current members with improved products and services so that you will want to remain a SCC member. Our new Officers and Directors are dedicated to doing just that! But you can do your part by making the following resolution: "I will become more involved in Scandinavian Philately and SCC this year!" Decide now to attend a meeting or a show, prepare an exhibit (even if it's only one frame), write an article, sponsor a new member, or volunteer to help SCC or a fellow collector in some active way. "The more you put into it the more you'll get out of it!"

It's time to say "Many Thanks for a job well done!" to our outgoing Officers and Directors. Each has made SCC a stronger, more vibrant society and for their efforts they should be congratulated! We wish them well and hope they will continue to support SCC by encouraging others to participate in the society's many and varied activities and programs. Thanks especially to Roger Schnell for his leadership and energy in support of Nordic Philately around the world!!

While I'm at it, congratulations to our newly elected Officers and Directors. With an expanded Board it should be easier to bring many more ideas for new and expanded programs and activities to fruition. I look forward to an exciting two years. Three of the new Officers, Nelson, Pearse and Schloss and I met in early January to get a head start charting a course for SCC during the next two years.

We have another new face on the SCC Staff. Ed Menninger of Lillington, NC has answered the call for a *Posthorn* Advertising Manager. Jack Day, who has done a yeoman job for the past five years is currently helping Ed get established. This is just another example of members who are willing to volunteer their time and talent for the betterment of our society. Many thanks to both Jack and Ed!

Don't forget to plan now to attend our Annual Gathering at Philatelic Show '95, at Boxborough, MA, just outside Boston, April 28-30. Chapter 5 will host, with newly elected 2 Year Director Wayne Rindone making most of the arrangements. Get your Exhibit reservations in pronto, and spend some time with us! There will be lots of special activities and awards including new inductees into SCC's Quarter and Half Century Clubs. Philatelic Show has always been a great show for Scandinavian Philately. See you there! Some chapters are forming car pools, so if you are interested contact the one nearest you!

FINLANDIA '95 is also a big event for Scandinavian Collectors this year. It follows close on the heels off our "Annual Do" in Boxborough and I hope many of you can take in both events. Another of our 2 Year Directors, Roger Quinby, is our American Commissioner. I've heard that a number of our members have had exhibits accepted for entry to this prestigious event! Good luck to all!!

Now for the commercial! For those of you who leave things till the last minute, I want to remind you that your dues, if not paid by March 31st, will cause you to miss out on the May 95 POSTHORN! We've had an excellent response so far, but I know from past experience that there will be a bunch of you who will put it off and then just plain forget. So if you're in doubt, send me a check for \$15 (North American members) or \$21 US for our overseas members. If you paid for '95, then I'll apply it to next year and you'll be ahead of the game! Thanks!

Editor's Notebook

I want to thank Roger Schnell. During his tenure as president the SCC purchased a computer for editing the *Posthorn*. I can see the difference in the final product as well as enjoy my work more.

If the computer is so great, why isn't the *Posthorn* perfect? Probably human error. There are parts of the editing job I don't like. Number one is the fact that some of you put in good, solid, work on an article and then don't see it in print for a long time. There are bottlenecks in the system, one of them is me, but we will move on.

We do have Icelandic manuscript cancels, Danish stars, "computer plating" the bi-colored, and some wonderful topical pieces coming soon.

Reprinting Articles From the *Posthorn*

Last year at WESTPEX the board approved the concept that past articles in the *Posthorn* can be reprinted by others so long as they have permission from the author and the editor. In the case of older articles where the author is deceased I have not denied permission to reprint. When other philatelic publications request reprinting our articles I say it's ok by me, check with the writer.

I have no intention of playing favorites or deciding who can and who can't reprint our writers' work. My function is solely to be sure those who wish to reprint will approach the author in good faith.

This issue contains a lead article which was also printed by *Scandinavian Contact* in England. It's a kind of "joint venture." While I don't want all philatelic magazines devoted to Scandinavia printing all the same things, wherever we can spread philatelic knowledge, we should try to do so.

Specialized Scandinavia

We're into our third decade of helping to build collections through our monthly lists of Scandinavian specialty material: covers, booklets, locals, stationery, seals, literature . . . and even stamps.

So if you're looking for such things as Kenttaposti covers, "FERIE" overprints, the Porkere mute cancel on cover, Gentoft Grølandskomité seals, Adams Expres items, Goteborg stationery, or Åland special postmarks, we could be your source.

In other words, if you haven't been hearing from us recently, let us hear from you. You'll really enjoy our lists (we're told they make interesting reading) and perhaps will find some things you need . . . at pleasingly reasonable prices.

Lizbeth Stamp Company

P.O. Box 321

Bloomsburg, PA 17815



Library News

Dr. W. E. Melberg, SCC Librarian

What a fantastic quarter we have had. Look at all the book donations that have come our way. Surely there is something of interest for some of our members. All it takes is a letter (Post Box 314 - Allenton, WI 53002) or a phone call (414-629-5251) requesting some item.

In recent issues of the Danish journal, *SKILLING*, mention is made of odd impressions found within the center ring of some of the "udslebne" cancels of VESTERBY & RAVNKILDE. The writers think they were caused by loose screws of the canceler. Al Gruber is very interested in this phenomena and requests that the star cancel collectors check out their holdings. Covers with readable dating will be most helpful.

Library Donations - October 1, 1994 to December 15, 1994.

Cash:

Ellis Glaat, Don Halpern, Val Puzulis, Roger Quinby, Dr. Roger Schnell, Arnold Werner, Robert Wiley

Publications:

Aarhus Frimærkehandel - Lars Boes *DANMARK FRIMÆRKEKATALOG 1994-95*. 1994. 331pp. Another crowning achievement, in color. Presents all the values of mint and used stamps of the Danish area. This publication can be purchased from Lizabeth Stamp Company.

SPECIALKATALOG - 1995 - Danmark, Færøerne, Grønland, DanskVestindien, Slesvig-Holsten & Island - AFA - Lars Boes - 1994. 720 pp. An outstanding publication that covers all issues of these countries. Includes postal rates, Danish number cancels & Faroes Stars (Includes valuations). The big feature is a listing with pictures of the **Våbentype 20 Øre varieties**.

TAKSTFORTEGGNELSE 1851-1995. Portotakster, Danske frimærker frankeringsformål & Frimærker med kortkurseringsperiode.

K. Tolbøl. 1994. 72pp. Postal rates, Listing of all Danish stamps plus a List of the very short issuing dates.

FG Nordische Staaten E.V.

ISLAND - GANZSACHEN 1879-1941. H. Schilling. 1994. 68pp. Handbook of Icelandic Postal Stationery.

Mike Hvidonov (With comments about the publications made by the donor!!)

POSTEN I VÄSTNYLAND IN TALL 1918 - Några Anteckningar om Västnyländsk Posthistoria Före 1918 - B-E Sahlstedt. 1979. 115pp. Some notations on Western Nyland's (county in Southern Finland) postal history before 1918.

FORWARDING AGENTS - Manuscript markings & Handstamps on letters from foreign countries to Finland. D.A. Dromberg. 1985. 108pp. A precise writing on Forwarding procedures listing many (if not all) Agents from years gone by. The author was a brilliant engineer and philatelist who delved deeply into Postal History. His intellectual and very thorough writing may help others to better comprehend this fascinating subject. One can be assured that the interest and the facts are unflawed exactly as written by the talented author.

KIERTOKIRJEITÄ - 1813-1820 POSTENS CIRCULÄR 1986. 80pp. The circulars were usually of good size and I assume tacked to posts or hung in the Post offices for people to read and digest.

ALAVUDEN POSTIOLOJEN KETHITYSVAIHITA - Leimoja ja lähetyksiä. O. Leistevuo. 1987. 120pp. This treatise is a reflection of a probable inhabitant of a town that existed many decades back inasmuch as none of my town name references include the name. Efforts such

as this insure that the Town will never be forgotten and thus should remain in the memories of interested parties for all time.

POSTIN KIEROTOKIRJEITTÄ 1820-1828. 1987. 106pp. The circulars were usually of good size and I assume tacked to posts or hung in the Post offices for people to read and digest.

VIRON POSTIMAKSUJA - 1918-1940 - POSTAL RATES OF ESTONIA. E. Mattila. 1987. 112pp. This 'POSTAGE' volume was prepared by Mr. Mattila to enable the collectors of this nation to determine proper postage rates and there is no one who could do it better. Esa has produced a very good book for Finnish Postal Rates for the years 1881-1985 which seems to be 'The Bible' at this time. Good Work!

Gene Lesney

DENMARK STAMP BOOKLETS CATALOGUE (Including Booklet Panes from Pre-1960 Booklets and Booklets of Faroe and Greenland). Rob Boom. 1994. 150pp. Latest edition of this outstanding publication.

W.E. Melberg

"*Glued-on Postal Stationery Pieces of Denmark*." W. E. Melberg. One frame exhibit that received the Grand Award in its class at WESTPEX 94. Included is an AAPE critique by Gerhard Korn.

INSIDE GUIDES : DENMARK. D. Taylor-Wilkie. 1991. 342pp. Tourist guide to Denmark.

INSIDE GUIDES : NORWAY. D. Taylor-Wilkie. 1991. 390pp. Tourist guide to Norway.

INSIDE GUIDES : SWEDEN. D. Taylor-Wilkie. 1990. 345pp. Tourist guide to Sweden.

Northland Co. (Given in Arlene Swanson's name)

THE ROGER A. SWANSON COLLECTION. ICELAND I GILDI OVERPRINT. 109pp. (photocopies) & 12pp. (printed - from auction catalog).

Jens Nyboe

ERIKOIS- JA ENSIPÄIVÄN LEIMALUETTELO. (Catalogue of the special and first day cancellations of Suomi). K. Vaarnas. 1947. 16pp.

VATTENFALL. Several authors. 1965. 24pp. A publication outlining possibilities of topical philatelic exhibits concerning waterfalls, dams and electrical productions. Many colored illustrations of stamps.

CATALOGUE OF THE SWEDISH UN-FORCES MILITARY MAIL CANCELLATIONS. Covers Egypt, Congo and Cyprus. T. Calleras. 1966. 13pp.

FRIMÆRKERNE FORTÆLLER OM DANMARK. S. Tøgeby. 1940. 127pp. Stamps tell about Denmark.

DANMARK FIREBLOKKE 1888-89. L. Boes. 1988. 36pp. Catalog of Danish blocks of four.

POST-OG TELEGRAF HÅNDBOGEN 1975 256pp.

DANMARKS FØRSTE FRIMÆRKE - FIRE R.B.S. J. Schmidt-Andersen. 1961. 200pp. The complete story about Denmark's first postage stamp with plating illustrations.

THE POSTAGE STAMPS OF DENMARK. 1851-1951. 1951. J. Schmidt-Andersen. The "BIBLE" of Danish philately. Includes the 10 color specimens of the Thiele III printing of the fire R.B.S., 1854.

DANMARKS OG DANSK VESTINDIENS FRIMÆRKER. G. Hagemann. 1942. 135pp. Has some of the classic emissions.

POST- OG TELEGRAF ADRESSEBOG FOR KONGERIET DANMARK. 1966.

THE DANISH POST AND TELEGRAPH MUSEUM THROUGH 50 YEARS. 1913 - 3rd NOVEMBER 1963. J. Petersen. 1963. 60pp.

FRIMÆRKE ÅRBOGEN 1967-68. Ib. Eichner-Larsen. 148pp. Many stories, old & new.

FRIMÆRKE ÅRBOGEN. 1968-69. 156pp.

FRIMÆRKE ÅRBOGEN. 1969-70. 144pp.

FRIMÆRKE ÅRBOGEN. 1972-73. 160pp.

FRIMÆRKE ÅRBOGEN. 1980-81. 160pp.

SCOTT'S POSTAGE STAMP CATALOGUE. 1927. 1630pp.

"1806 - POSTEN " 1956. Københavns Postbudes 150 Aars Jubilæum. 1956. 112pp. The big National Exhibit in København. Featured article is about the **FODPOSTEN I KØBENHAVN**.

POSTNUMMERKATALOG. 146pp. Listing of Swedish postal zone numbers.

Carl Probst

OF DANISH WAYS. I. MacHaffie & M. Nielsen. 1976. 250pp. Informative book about Denmark and its people.

OF FINNISH WAYS. Aini Rajanen. 1981. 224pp. A great book about the history of Finland, their people and culture.

OF NORWEGIAN WAYS. Bent Vanberg. 1970. 227pp. An history and cultural review of Norway.

OF SWEDISH WAYS. Lilly Lorenzen. 1964. 276 pp. Interesting book about Sweden and its people.

Alan Warren

"Norway - 1877-1893." G. Larson & F. Coes. AP. 11/33. 34pp. Article about the Posthorns.

"Types of the 1863-66 issue of Norway." L. Fulcher. AP. 8/28. 4pp. Article about the Posthorns.

"NORDIA 94." *KATALOG* - Aarhus 1994. 130pp. Several articles about Aarhus, Island, Grønland, Finland and Sweden. Will send you a listing if interested.

"NORDIA 94." *Palmares Listing*. 16pp.

"File of Scandinavian Articles from *Scandinavian Scribe*. Listing available on request.

Purchased:

PHILATELY AND THE COMPUTER. An Illustrated Guide to Using the Personal Computer as a Philatelic Tool. D. Wolf & A. Mary. 1994. 272pp.

SCANDINAVIA

I have more than 20 years experience
in the business

And contented customers
throughout the world

*Please send for a free copy of my monthly
auction catalog*

OLOF LINDER

Box 12163, S-102 24 Stockholm, Sweden

Fax no int. + 468 653 27 95

Chapter News

Chicago Chapter 4 News

The October meeting consisted of a very special program by Magnus Hrolf of Geneva, Illinois. He came dressed as a Norseman and gave us an excellent presentation of Viking history and life. A most interesting evening. It made most of us very cognizant of our heritage and roots. The early December meeting was a pleasant gathering but the auction was canceled due to the absence of our auctioneer!!!

The big news of the last quarter is that CHICAGOPEX '98 has accepted the Scandinavian Collectors Club as the main participating society. ! — Dr. W. E. Mellberg

Boston Chapter 5 News

The Boston chapter is looking forward to hosting the SCC National Convention at the Philatelic Show '95 in Boxborough, Massachusetts on April 28-30, 1995.

The chapter has nominated chapter member Fred Brofos for the SCC Jacobson Award. This award is for continuous contributions to Scandinavian philately.

New York Chapter 7 News

Chapter meetings at the Collectors Club have featured travelogue videos on the Scandinavian countries: most entertaining and edifying. — Ray Merikallio

Delaware Chapter 13 News

In September, Whitey Bro told us about the Danish Immigrant Museum in Iowa near where he lived as a boy. In October we reviewed two of our slide shows to evaluate them and get them ready for submission to the national SCC library. Al Gruber, in the November meeting, described his plating research on Iceland C-1, the first airmail from that country. Our December meeting, which is always held the first week in January, is our annual dinner meeting. Our spouses and a few guests also are invited, and this year the program will be a video program about Queen Christina of Sweden.

- Robert Lipscomb

Minneapolis/St. Paul Chapter 14 News

November saw chapter 14 meeting in a new location. While our previous location on the University of Minnesota campus provided adequate facilities, access was complicated and tended to discourage new members. Our new meeting location is at the Lynnhurst Community Center on 50th Street and West Minnehaha Parkway in Minneapolis. Attendance at the November and December meetings has shown a definite improvement.

We are currently planning Snowpex, our annual stamp show [*and a great joy to our editor's children*]. — Ross Olson

Southern California Chapter 17 News

Chapter member Will Ross, who served as Master of Ceremonies of the national Rockwell Kent Appreciation Society gathering in Rochester, New York, spoke on Rockwell Kent's involvement with Greenland Post in the 1930s.

Golden Gate Chapter 21 News

The chapter meets at major stamp shows and occasionally in various meeting places. The November meeting featured slides of Danish and Swedish varieties by Helmer Nielsen and Jerry Moore. Members brought show and tell of something they're working on or recently acquired.

Houston Chapter 22 News

Chapter 22 has been meeting once a month. One month we will meet on Sunday afternoon at Mary Jane's Stamp Shop (713-688-5850) and the next month on a Wednesday evening at the Law office of George Sellnau (713-782-8393). The meeting dates are varied from month to month so as not to interfere with stamp shows and other events of interest such as Super Bowls. Since the SCC Mart Manager is a member of Chapter 22, we are lucky to often be the first chapter to see many of the mart books. We welcome any members of SCC visiting Houston to call Mary Jane or George and attend our meeting.—Eric Roberts

West Coast Chapter 23 News

Meetings are held at the Kissin' Cuzz restaurant. In September and October Charlie Seaman talked about his trip 'Down East' last summer. In November President Harold Finn presented an interesting program on philatelic baseball and football memorabilia. — RP

Winnipeg Chapter 24 News

Meetings are now being held in a larger room at the Scandinavian Centre, the Norwegian Room, and as a result of a fund raising campaign led in part by members of the chapter three is now an elevator. One of the chapter's members, Haakon Feilberg, was very active in this effort as he is confined to a wheelchair.

The chapter gets circuit books of the Royal though we would much prefer circuits from SCC. Our past president, Roger Fontaine, has volunteered to help in the formation of a Canadian SCC circuit system. Hopefully details will be worked out soon. The annual Christmas party featured Danish food and a fundraising auction.

In November Ole Hellsten and Glenn Hansen jointly spoke on their trip to Compex in Chicago at which Ole took a silver for a study of the 10 øre Christian X of 1913 and Glenn got a gold for a display of Postfærge material. The highlight of the trip was the wonderful hospitality of Doc Melberg, his wife Florence, and his son Anders. Of course the boys in Chicago treated us royally too and we will long remember the auction held on Saturday.

The executive is meeting sometime during the holiday season to plan the club program for 1995 when it is expected to include the summer visit to Lac Lu and the fall visit to East Braintree. The former is the summer home of Glenn Hansen where a weekend in the Lake of the Woods area is featured and East Braintree is Haakon Feillberg's home where we have our annual corn and wiener roast. Haakon is the son of one of the pioneer Danish settler families in Canada. Their exploits have been chronicled in letters back home that have been published and Haakon himself is an author of note.

Many members of chapter 24 are also members of the Winnipeg Philatelic Society and are active on its executive. Largely as a result of their efforts the WPS group has seen a revitalization during the past year and is now preparing for a year 2000 Royal Philatelic Society show that will see SCC holding its first ever meeting in Canada. Thanks to Eric Petersen, Robert Zacharias, Ole Hellsten, Donald Fraser, and Glenn Hansen. The spirit of ecumenism is alive and well.

At the WPS annual exhibition and bourse Glenn was able to obtain a cover bearing the complete set of Queen Maud of Norway on cover dated late in 1939. During the show it disappeared and after some searching was given up for lost. Last week, at a WPS meeting, one of the members reported that he had found it and stuck it in his exhibition program. He had not looked at it since the show and was in the process of filing it when he found the cover. Glenn has a habit of using anything as bookmarks, from scraps of papers to, evidently, prized covers.

— Glenn Hansen

Tidewater Chapter 26 News

Chapter 26 met at VAPEX '94. Our first gathering at a national show was very successful. There was an SCC table for the duration of the show. We had society applications & *Posthorns* available for the public. The journals were gone by the first day and most of the applications were gone by the third and final day of the show. We had a scheduled meeting and program on Saturday featuring "Swedish Ring Stamps," presented by Frank Baze. It was excellently done. George Kuhhorn had some input into the program, of course, as well as the rest of us who were in attendance. George also brought a huge display case which was set up at the society table with some of Frank's ring stamp pages.

Mikes Falls presented a "show & tell" program on "Early Scandinavian First Flights" for an American Airmail Society chapter meeting on Friday.

Last, but not least, was the attendance of our own SCC President, Dr. Roger G. Schnell, as a member of the Panel of Judges. Of course, he was kept quite busy during the show with judging, panel meetings and critiques.

— Michael Falls

Membership Statistics for the Fourth Quarter Ending December 31, 1994

New Members

3540	ROGERS, MICHAEL, 199 E. Welbourne Ave., Winter Park, FL 32789 Finland	By: Beery H-18
3541	WINTER, ROBERT F., P.O. Box 283, Spring Valley, NY 10977 Postal History of Åland, Faroes & Greenland, Finland Cancels	
3542	WIMER, DENNIS A., 1121 Doyle Ave., Charleston AFB, SC 29404 Scandinavia, USA, Liechtenstein	By: Baker 2747
3543	DRYSELIUS, JAN B., 50 Patti Lynn Lane, Houston, TX 77024 Sweden, Scandinavia, US, Canada, World	
3544	KORPINEN, MATTI, 4855 Meadow Lane, Shoreview, MN 55126 Finland, British Commonwealth	By: Abel 3064
3545	WORSFOLD, ALEX, P.O. Box 250, Bathurst, NB Canada E2A 3Z2 Dealer	By: Probst 1263
3546	EVANS, JOHN J., 662 W. Aldine, Chicago, IL 60657 Sweden, Denmark, France	
3547	DOUGHERTY, DEAN B., P. O. Box 229, New London, PA 19360 Iceland, USA	By: Lang 1095
3548	MELBERG, FLORENCE, P.O. Box 134, Allenton, WI 53002 Denmark	By: Melberg 1678
3549	CHRISTENSEN, DAN, 505 Sweet Gum Lane, Eugene, OR 97401 Norway, Iceland, Greenland	
3550	CHRISTENSEN, PETER, 5819 Cambridge Circle #2, Racine, WI 53406 Denmark, DWI, Greenland, Faroes, Iceland, Schleswig	By: Faschingbauer
3551	DUNWIDDIE, WALTER C., 5703 Wythe Avenue, Richmond, VA 23226 Sweden Booklets, Scandinavia, USA	By: Abel 3064
3552	BAUER, CINDY R., 101 Overpine Road, Box 2612, Lyons, CO 80540 Scandinavia	
3553	YEONG, TONY S. W., Orchard Post Office Box 265, Singapore 9123, Singapore China, Worldwide	
3554	BERNHARDSSON, MIKAEL, Mariaplan 4C, S-414 71 Gothenburg, Sweden Sweden, Germany, USA	By: Donell 3282

Reinstated

2288	ROOS, JORGEN, Goteborg, Sweden - From June '94 Drop List
2013	BROWN, ROBERT E., Annandale, VA - From June '94 Drop List

Regular to Life

L-85/0202	PALME, ROBERT W. - Member since 1944
-----------	--------------------------------------

Regular to Honorary

H-24/2296	LESNEY, EUGENE G. - Member since 1979
-----------	---------------------------------------

Resignations

3370	KADULL JR., PAUL J. - Member since 1991
1779	TOSHACH, JANET - Member since 1973
3447	DAHLSTROM, HARRY A. - Member since 1993
3430	HEIL, DICK - Member since 1992
0868	PRESTON, DICKSON H. - Member since 1976
3411	WOOLDRIDGE, TOM - Member since 1992
3434	GREAVES, GRANT - Member since 1993

Deceased

2700	ASGEIRSSON, PALL H. - Member since 1982
L-27	de LAMBERT, BEN - Member since 1969
3165	TRASK, R. HUGH - Member since 1988
2783	GILBERT, LEWIS D. - Member since 1983
2990	SIM Jr, ANDREW - Member since 1986
3021	MARTENSSON, KARL-AXEL - Member since 1986

Lost Member -

L-35	FROMER, MARK, 1671 E. 16th St. #218, Brooklyn, NY 11229
------	---

Change of Address

2683	MELBERG, ANDERS K. c/o Jensen, 4136 N. United Pkwy, Schiller Park, IL 60176
2612	EGGEN DALE R., 2851 S. Valley View Blvd. #1029, Las Vegas, NV 89102
1636	PAULSON, ROBERT E., 1179 Pine Ridge Circle West-A1, Tarpon Springs, FL 34689
1697	HABER, FRED, 11060 180th C T S, Boca Raton, FL 33498
3331	KRUSE, UNO, 104 Chaphagen Drive, Neptune, NJ 07753
1948	THUNE-LARSEN, ARNE, Melumv. 7, N-0751 Oslo, Norway
1405	PRESTRUD, STUART H., 1620 43rd Ave. E. #13B, Seattle, WA 98112
3511	CARDOZA, MARK L., 1283 W. Parklane Blvd. Apt. 114, Chandler, AZ 95224
2962	BJORK, TORBJORN, 14608 N. 40th Place, Phoenix, AZ 85032
L-78	JARDINE, NEAL J., P.O. Box 90277, Pasadena, CA 91109
2841	CRANDALL, WILLIAM M., 2983 Monica Terrace, Kissimmee, FL 34744
1909	NORMAN, HUGO R., P.O. Box 2863, Waterville, ME 04903
2728	JOHANSEN, DR. ERIC, Stampeengen 5, DK 2970 Housholm, Denmark
3503	SCHLITT, W. JOE, P.O. BOX 320, KNIGHTSEN, CA 94548

Many thanks to the following for generous doantions to SCC this period

L-37	JAMES BURGESSON in memoary of BEN de LAMBERT L-27		
1338	KAUKO ARO	0753 JOHN HENRY	3105 TIOVO RANNIKKO
2747	THOMAS BAKER	1700 JOHN HOLBROOK	2739 MICHAEL ROBINSON
3125	ALDRICH	1561 MARVIN HUNEWELL	2067 JOSEPH RUNNING
	BLOMQUIST	2803 LARS LORENTZON	3004 WILLIAM SAVAGE
L-02	B. I. CHRISTENSEN	0821 DAVID LUDDEN	1956 HOWARD SCHLOSS
3344	ROGER CICHORZ	2869 MICHAEL MAWHINEY	1210 JAMES SHEPARD
1462	GEORGE DEISZ	3481 JOHN MC CAY	1545 GEORGE SICKELS
H-21	VICTOR ENGSTROM	1620 LYNN MINNEMAN	2641 JACKSON SOTHERN
1381	PHILLIP FLEMING	L-70 FRANK MOONEY	1933 CLARENCE STRANDELL
1049	ALFRED GRUBER	1389 PAUL NELSON	3458 LEO THOMPSEN
3300	ANNETTE GRUBER	1405 STUART PRESTRUD	2828 ALLEN WIRTA
3517	SOREN HAAGENSEN	2661 VAL PUZULIS	

SCC Membership Summary as of December 31, 1994

Current Total Paid	948	Total Paid Last Report	944
Honorary	8	Changes	4Q94
Life	62	New Members	+15
Regular	873	New Life/Honorary	0
Subscriptions	5	Reinstated	+2
		Adjustments	0
Total Paid	948	Regular to Life/Honorary	+/-2
Courtesy & Exchange	33	Resignations	-7
SCC Staff & Library	70	Deceased (One Life)	-6
Total PH Copies	1051	Members Dropped	0
		Total Change	+4
			* S * C * C *

Membership Exchange

If you are looking for pen pals, stamp exchanges, obscure information, or a way to sell extra material we will print FREE MEMBER-TO-MEMBER "ADS" on a "space available" basis with minor editing as necessary. Try to be brief — 40 words or less is best,

Submit requests to the Editor. (Dealer members will not be eligible for gratis ads, but can purchase M-T-M space at the rate of 20 words for \$2. (minimum) plus 10¢ per additional word. Contact our Business Manager listed on the Contents Page.)

WANTED: Swedish Postal Stationary and Swedish unexploded booklets — pre-1950 — in good condition. Please send description and offer to: Karl A. Martensson, PO Box 15, S-233 21 Svedala, Sweden (3021-3)

* S * C * C *

WANTED: Any philatelic material to do with Swedish immigration or Swedish-American interests. Swedish town names on US cancels, etc. Send list on anything you would like to sell. Hans Ahlstedt, 3500 Sutherland Ave, Apt. C-209, Knoxville, TN 37919

Wanted: TRAMWAY Parcel Stamps: I pay US \$50 each for 5 and 10 øre parcel stamps from Trondhjems (or Trondheim) Sporvei and \$100 each for parcel stamps from Graakalbanen. Knut Glasø, Overlege Wings vei 1 A, N-8613 Solfors, Norway (3227-3)

Starting 2nd Norway #4 Plate with surplus from first plate. If interested send want and/or sell list or exchange. I have duplicates. Save buying 50 when we need 2. Helge Hagen; 11081 View Lane; Corona, CA 91719 (3512-2)

Posthorns of Norway: collector in the U.K. wishes to contact members in the USA or elsewhere with an interest in the Posthorns of Norway. John Thomlinson; 1, Hillcrest RD; Bearsden; Glasgow; G61 2EB; U.K. (3032-3)

* S * C * C *

Wanted by Researcher: Iceland *I Gildi* errors/varieties, listed or not, sheets with or w/o varieties, quantities. Send photocopies with your price or for my offer. E. Glatt, Box 2080, Ventura, CA 93002-2080 (1808-1)

* S * C * C *

Norway Yearsets for Sale: 1977-93 complete, VF as issued. Face \$220, price \$200 postpaid. Eric Roberts, PO Box 460201, Houston, TX 77056 (L53-1)

* S * C * C *

Norway Yearbooks for sale, 1988-93 complete, as new in original containers. \$260 postpaid. Eric Roberts, PO Box 460201, Houston, TX 77056 (L53-1)

* S * C * C *

Sweden Collection 1855-1918, used only, for sale. Mounted on blank Scott pages. Approx. value FACIT 350,000 SW Kr. Includes multiple copies of all skilling bco. values, 1858 coat-of-arms, lion, etc. For details write Ernesto Fink, Seutterg. 56/8, 1130 Vienna, Austria (144-1)

* S * C * C *

Wanted: Finland Saarinen Issue, Scott 83-110, 119-140, 143-154/FACIT 67-75,84-107, 109-122, 125-136, 140-146 (mint, used, multiples, sheets, on cover) in large or small quantities for study. Frank Baze, 7061 Yahley Mill Road, Richmond, VA 23231 (2935-1)

* S * C * C *

Ben de Lambert

1934—1994

The SCC has lost a member in Ben de Lambert who was very close to many Scandinavian collectors in California and throughout the country.

Ben was born in Värmland, Sweden and at 15 moved to Santa Barbara, CA with his family. He had a travel agency in Santa Barbara for many years and started collecting stamps in the 1960s.

Ben was an early member of Chapter 17 and often drove the 120 miles and back to Los Angeles for chapter meetings. He collected all of Scandinavia and specialized in the Coat of Arms issue of Sweden.

Ben was very helpful to the many collectors in California who turned to him for help. He was an accomplished and respected philatelist and was fluent in Swedish.

He moved to Minnesota in 1979 with his family and settled back in the San Francisco bay area some years later where he managed a golf course. He was an avid golfer, philatelist, gardener, pianist and numismatist.

He passed away October 10, 1994 and leaves his wife Dotty, two daughters, Grey and Heidi, son Bob, son-in-law John and many philatelic friends.

JUBILEE AUCTION

March 24-25



Featuring

ICELAND DE LUXE

Collection awarded 2 gold medals

SWEDEN DE LUXE

Ex. Hugo Palmé & Hans-Otto Kaiser

CLASSIC DENMARK

Ex. Hugo Palmé

FINLAND GOLD

Exclusive selection from 2 collections

Order the Catalogue Today!

Entirely in English and richly illustrated. Price \$10 per copy or \$30 for subscription (at least 3 catalogues including lists of prices realized).



THE NORDIA AUCTION

October 25-26

We have been appointed to arrange the official NORDIA 95 auction in connection with the exhibition in Malmö in October.

Consignments are accepted now.

POSTILJONEN AB



Box 4118, S-203 12 Malmö, SWEDEN

Telephone Int. +46 40 72290

Fax Int. +46 40 72299

The auction house in Scandinavia

THINKING OF SELLING?

We Offer 3 Distinct Alternatives

PUBLIC AUCTION Through public floor auctions, your stamps reach the broadest possible audience in a positive selling environment. The price you realize will be determined by open market bidding, not private negotiation. Our illustrated auction catalogs and broad customer base insure that your stamps are attractively presented to active buyers in the United States and overseas.

Ask about our new commission structure for sellers . . . now as low as 5% for larger properties.

PRIVATE TREATY Specialized collections, in particular, must be presented in the proper way to other specialists in order to maximize the price realized. You set the price. We then inform selected customers of the property and endeavor to sell it within 90 days.

IMMEDIATE CASH We constantly buy and sell stamps in the normal course of our business and need to acquire collections as well as better stamps and covers from all Scandinavian countries. We provide frank evaluations and IMMEDIATE PAYMENT IN FULL for all acquired material regardless of size.

Call Toll Free 1-800-950-0058

in NJ 1-201-746-7982

FAX 1-201-403-2601



NORTHLAND CO.

BOX 34 • VERONA, NJ 07044

Scandinavia Exclusively . . . Since 1975

