



The

# POSTHORN

MAY 1995

**Previously  
Unpublished  
Photographs of  
the Lindberghs  
in Greenland**

**One More  
Cover from  
East Greenland**

*See Story on Page  
51*

**Here Anne Lindbergh  
in August of 1933 in  
Greenland**



---

**Journal of the Scandinavian Collectors Club**

---



## Scandinavia

- Building fine collections for exhibition, research, and enjoyment. Offering approvals from your specific want list or a description of your specialized interests.
- Offering complete private treaty services for your Scandinavian material.
- Active buyer of complete collections or individual items. High prices paid; with immediate cash payment. Avoid the delays and uncertainty of auctions. I have many customers for your good material.
- Providing over 300 titles of philatelic literature and catalogs for the Scandinavian collector.

**Call toll-free 1-800-44-STAMP (1-800-447-8267)**

Phone: 910-376-9991 Fax: 910-376-6750

*The Scandinavian Specialist since 1973*

**Jay Smith**

**P.O. Box 650-SCC Snow Camp, NC 27349**



The  
POST HORN

Official Publication of the  
SCANDINAVIAN COLLECTORS CLUB  
Published Quarterly Since 1943  
*Copyright 1994 Scandinavian Collectors Club*

Vol. 52, No. 2

May 1995

Whole No. 203

## Table of Contents

One More Lindbergh Cover, by Drs. J. P. Hart and Dan Laursen .....	51
Tourist Stamps (Swedes in the Canaries), by John Lindholm .....	55
A Classic Letter from Sweden to Mexico, by Lauson H. Stone .....	57
Carl Pelander and Fred Brofos: Two Early Editors, by Richard St. Clair .....	58
Dramatic Crash of Zeppelin in Norway, by Frederick A. Brofos .....	60
Gustaf II Adolf, Lutzen: Early 1930s FDCs, by Alan Warren .....	62
What's Happening in Finland, by Mike Hvidonov .....	65
Transfers & Re-entries, by Alan Warren .....	66
Philatelic Zeal Under Fire (WWII Norway), by Sven Åhmen .....	67
Regional Meeting at APS's Stampshow, by Marvin Hunewell .....	69
Scandinavian Literature Notes, by Alan Warren .....	70
Danish Star Cancelers, by Alfred A. Gruber .....	74
The Swedish Post Connection via Pomerania, by Gordon Hughmark .....	80
New Book on Finnmark Postal History, by Hal Vogel .....	83
SCC Meetings .....	84
<i>Stjernestempler: Danish Star Cancelers, by Dr. Dan Laursen</i> .....	85
Library News .....	88
Membership Exchange .....	95
Stanley Hanson obituary .....	96

**Deadline for August Issue: June 30, 1995**

**Editor:** John Lindholm  
2316 Lakeview Dr.  
Fergus Falls, MN 56537  
(218) 739-3260

**Executive Secretary:** Robert W. Lang  
P.O. Box 125, Newark, DE 19715

**Business Manager (Advertising):**  
E. A. Menninger, PO Box 457  
Lillington, NC 27546

THE POSTHORN (ISSN 0551-6817) is published five times yearly by The Scandinavian Collectors Club. Membership, including subscription, \$15 per year, \$21 for Non North American addresses. Contact Executive Secretary for membership & change of address. Advertising rates & terms available from Business Manager. Second class postage paid at Madrid, Iowa 50156. Copyright 1993 by The Scandinavian Collectors Club.

POSTMASTER: Send Form 3579 to SCC Exec. Secretary, P.O. Box 125, Newark, DE 19715

Affiliate 79, American Philatelic Society  
Affiliate, Royal Philatelic Society of Canada

Printed in USA  
(USPS 603680, ISSN 0551-6817)



## Welcome to the Leading Norwegian Stamp Auctions!



Twice a year we arrange a public auction in Oslo as we have been doing for some 15 years. The total turnover has been some NOK 10 millions a year. Each auction contains approximately 1100 lots with starting prices from NOK 100.

Our most expensive item was sold for \$125,000 in 1987; Norway No. 1 in a block of nine from the world famous "Vi King" collection formed by Mr. Jared H. Richter. This is a Norwegian all time high.

The auctions also include top quality objects from many other countries. The market for stamps in Norway is one of the strongest in the world, and this is reflected in the prices realized not only for Scandinavian items. Our computer systems includes some 18,000 customers worldwide and we believe our selling potential would be most interesting also for vendors abroad.



*We would be happy to serve you. Drop us a line - or a fax or give us a call for a free copy of our auction catalogue or for further information.*

Elisenbergvn 19 N-0207 OLSLO 2  
NORWAY. Phone 47-2-441914  
FAX 47-2-560404

# One More Lindbergh Cover

By Drs. J.P. Hart Hansen and Dan Laursen

*Besides being a collector of Greenland postal history, Dr. Hart Hansen is chief of pathology at Copenhagen County Hospital, Gentofte, Denmark and chair of The Commission for Scientific Research in Greenland. Dan Laursen is a collector of Greenland philately and The Posthorn's Greenland editor.*

## Introduction

The February 1993 *Posthorn* issue carried an article by Les Winick and friends about a Lindbergh cover owned by the well-known Icelandic collector Páll Asgeirsson (pp. 17-18). The article states this is the only known cover from the east coast of Greenland. This postulate was meant to be limited only to letters carried by Charles Lindbergh in 1933.

Alan Warren repeated that assumption in "Ice Cap News" of July-September 1993 where Dr. Hart Hansen read the note and informed *The Posthorn* that he is the happy owner of one cover with contents plus a couple of letters flown by Lindbergh from Angmagssalik (now Tasiilaq). Before describing the cover and letters it may perhaps be fruitful to outline the background for the origin of these Lindbergh flown pieces of mail.

## Air Navigation

Early flights in the Arctic served three different purposes; 1) general Arctic exploration, 2) achieving great feats, and 3) a search for areas suitable for landing aircraft. The first two groups included drift balloons and dirigible airships as well as airplanes.

Well-known is the ill-fated balloon journey of the Swedes Andrée, Strindberg, and Fraenkel in 1897 with the balloon *Ørnen* (The Eagle). In 1909 an American journalist by the name of Wellman succeeded in taking a dirigible from Spitsbergen north of Norway about 60 miles towards the North

Pole over the polar pack ice. The first airplane flights were carried out by the Russian Nagurskii in August 1914 during the rescue expedition in search of Georgii A. Sedov's polar expedition. 1923 saw the start of the air race between the Norwegian Roald Amundsen and the American Richard E. Byrd to reach the North Pole, accomplished by Byrd May 9, 1926, and by Amundsen May 12, 1926.

On May 20/21, 1927, Charles Lindbergh made his famous solo flight nonstop from New York to Paris over the Atlantic in the "Spirit of St. Louis." This resulted in stimulating the third purpose mentioned above: searching for adequate landing places for those airlines preparing for commercial flights between America and Europe; the first phase being transport of airmail. Lindbergh participated in this enterprise which resulted in the concept of "Lindbergh cover(s)" in the postal history of Greenland. In this connection let it be known that Lindbergh also carried a post-sack with letters from Holsteinsborg and perhaps letters from Julianehaab also.

The air flight story, and thereby the postal history, is, however, only one half of the subject. The political history explains who the letter senders were.

## Politics and Expeditions

For a couple centuries East Greenland was only visited by seasonal hunters and scientific expeditions; the foremost being the Danish "Danmark Ekspeditionen til Grønlands Nordøstkyst 1906-08." From the members of that expedition the idea arose to utilize the resources of the country.

Hunting for seal and polar bear had been going on in the ice belt off the coast for years, even sometimes on the coast; mostly by Norwegians. But hunting on land really started after the





Pictures taken in August 1933 at the Lindberghs' arrival in Angmagssalik

Danmark Ekspedition by a few Norwegians. Now former members of the expedition tried to start a Danish hunting company which encountered much difficulty. Not until 1919 was "A/S Østgrønlandsk Kompagni" launched and able to send out men and material to establish hunting huts along the Northeast Greenland coast.

At the time most people did not doubt that all of Greenland was Danish, but some few pointed to the fact that Norwegians had wintered there on and off and utilized the wild animals which might call in question Danish sovereignty. A group of Norwegians disputed it openly. In 1922 a Norwegian expedition established a radio station Myggbugta at Mackenzie Bugt which transmitted daily meteorological reports back to Norway. This startled the Danes and negotiations were taken up with the Norwegians resulting in the East Greenland Treaty of July 9, 1924, which gave the Norwegians permission to hunt in the non-populated parts of East Greenland.

To underscore Denmark's sovereignty scientific expeditions sponsored by both official and private institutions

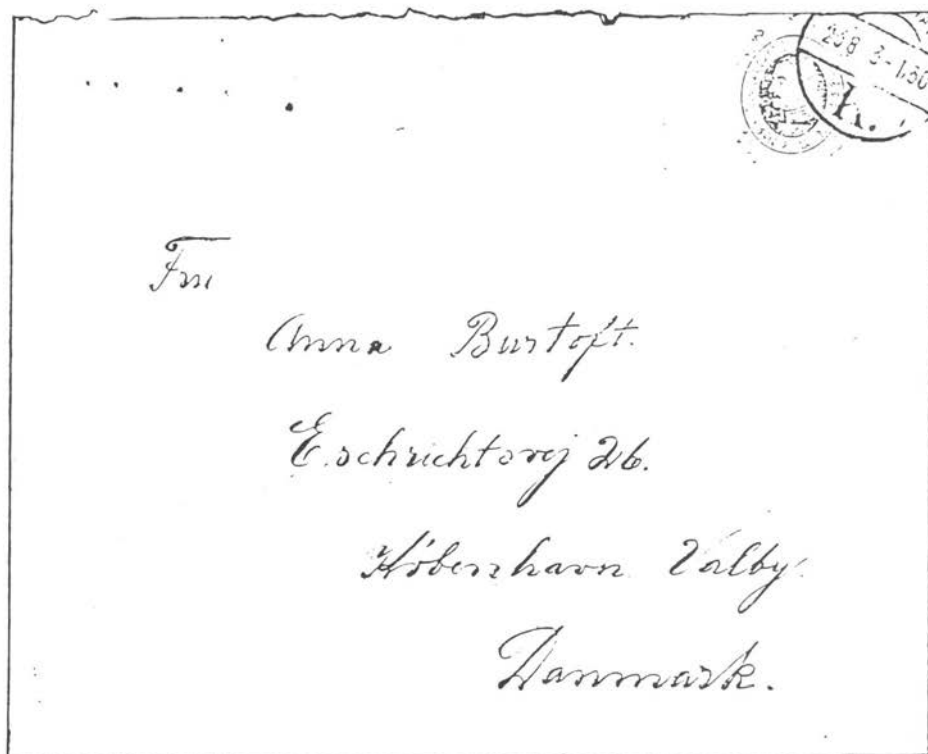
were dispatched. Ejnar Mikkelsen established a new colony at Scoresby Sund populated partly by Greenlanders from West Greenland and partly from the more southern colony Angmagssalik. From 1926, under the leadership of Dr. Lauge Koch, expeditions investigated the land from Scoresby Sund to the areas visited by Danmark Ekspedition.

The area south of Scoresby Sund was investigated by the 6th and 7th Thule-Expeditions under the leadership of Knud Rasmussen and headquartered at Angmagssalik. That is why and where Charles Lindbergh met with the letter writers of the Lindbergh covers; who did not know in 1933 they would become personalities in Greenland postal history.

#### **William and Johanne Stilling Berg**

In all official communication the Bergs are named Stilling Berg which is also the name they were known by in Greenland circles. It is therefore a little peculiar that Mrs. Johanne signs herself only as Berg as sender of the letter.

William Stilling Berg was a wireless operator employed by the Greenland Administration from May 26, 1925, and started at Angmagssalik (now Tasiilaq).



Ordinary looking cover which was flown by Charles Lindbergh from East Greenland

In 1928 he was promoted to telegraph manager.

Mrs. Johanne Stilling Berg was born of Danish emigrants in Davenport, Iowa but only three months after her birth her mother died and her father sold the farm and returned to Ærøskøbing, Denmark where her father's sister took her mother's place. Johanne called her Aunt. In 1925 she was married to William and went with him to Greenland August first the same year. Here she lived for the next twenty years interrupted only by two leaves. The meeting with the Lindberghs and being their hostess in Greenland was without a doubt the highlight of her life.

#### The Cover

The envelope is the usual size used in Denmark at that time, approximately

158 mm x 128 mm. The postage is a 10 øre brown Christian X 60th birthday stamp (Scott #213) canceled at København K (Copenhagen letter post office — Købmagergades Postkontor) 23.8.33. 1,30. The canceler is apparently hand date stamp no. 1 which is exactly the same canceler used on the cover shown by Winick. The route from Angmagssalik to Copenhagen is no doubt the same as described by Winick.

The proof that the present cover is a true "Lindbergh flown letter" lies in the contents: a letter from Mrs. Johanne Stilling Berg to Anna Burtoft. Mrs. J. S. Berg is the sender shown on the back of the cover, the usual place for the name and address of the sender on European private letter mail.

### The Letter

The letter contains a description of Charles and Anne Lindbergh as they were viewed and evaluated by a plain Danish civil servant wife. The following is a translation of that portion of the letter while trying to keep its flavor.

*[Ed. note: There are, in fact, other letters from the Bergs referring to Lindbergh. Unfortunately, covers to match these other letters have not been found so far (see below).*

*We wish to thank Per Danker for information about Mr. Stilling Berg.]*

Angmagssalik 13th August 1933

Dear Anna!

A thousand thanks for the letter which I received with Nordstjernen, this is only meant to be a short little greeting from us. We have a visit from Lindberg (sic) and wife, they fly tomorrow to Reykjavik if the weather is tolerable. Yes, this is a real event. The Lindberghs have eaten lunch here today. They are an unusually pleasant couple; she is so sweet and nice, Mrs. Lindberg; she is a wireless operator. They are so plain that it is not so easy to understand that they are such famous people. They are so sweet both of them. They have the cutest little boy by the name of Jørgen. Mrs. L says that she is yearning for him. Yes, Angmagssalik is almost the navel of the world, that is what we believe, we who live here. Aeroplanes are circling over here almost every day and we hardly look after them any more. Maybe we one fine day are coming flying home when we get air traffic between America and Europe, what do we know?

Hoping that everything is well at your place. I send my love.

Johanne

**Letter flown by Lindbergh from East Greenland containing news about the Lindberghs. (Nordstjernen was a ship under naval command, the commander being the sender of the other known Lindbergh cover from this flight.)**

Dear aunt and Pappa!

A couple of days ago I sent a greeting with Lindberg via Julianehaab, he flew from here to Julianehaab. But yesterday he again returned to here. If the weather is fine he will fly to Reykjavik tomorrow and I will again be able to get a letter off. Where the other letter is, I do not know, if it is in Julianehaab, or if you should get two letters at the same time. . . . . The day before yesterday here was an English trawler, the same captain who was here last year, the one who saved the pilots. . . He was willing to bring our mail when he was returning home to Scotland in 14 days, but we had not yet written our letters when he was here in the evening and he cast off 3 o'clock next morning.

I wonder if a mail route by air really might materialize, well, who knows . . .

[From a different letter]

Will take the opportunity to send home a greeting now Lindberg takes off for Reykjavik. It is the second time he is here in a week. It looks like he knows how to fly and we will hope that his fine flights in Greenland may result in, that we in the near future will get air mail here. Lindberg at least vouch for it. Mrs. Lindberg has accompanied him on the entire trip in Greenland, but she is not a passenger, she is wireless radio operator and is doing a very fine job. We always know how they are when they are hanging up there several thousand feet in the air. She is really useful to him. They had lunch at our house today . . .

**Fragments from letters probably flown by Lindbergh for which no covers have been found.**



## Letter Received

To the Editor,

SCC members should know about a scam in the Göteborg area of Sweden regarding registered mail. I recently sent a registered letter containing a few bank notes to pay dues for an organization to someone living just outside Göteborg. I attached the pink return receipt for foreign mail as an extra assurance that the letter was delivered. The letter was refused by the recipient and returned by the Swedish post office.

I wrote to Jan Billgren who chairs the Swedish Postal History Society, and asked why the letter was refused. He did not have the answer at first but on inquiry he learned that business men in the Göteborg area had been sent registered letters with return receipts. After accepting the letters, they were accused by an international gang of having embezzled the contents of the letter.

This activity was reported in the local press with the advice that such mail be refused. — Alan Warren

### Tourists Fly With Their Own Mail?



What would you call stamps that are printed in one country, only sold in another country, are only valid for mail to a few select countries and are available through your travel agent?

The philatelic press the world over is talking about tourist stamps made in Sweden for Swedes on vacation in the Canary Islands.

Apparently some travel agencies got the idea that tourists were fed up with how long the mail takes to get from the Spanish administered islands to friends at home (long after the vacationers get home). So on December 13, 1994, four agencies began selling "stamps" to validate mail sent on charter planes from the islands and then placed in the regular mail stream at Arlanda Airport.

Apparently three of the four agencies are from Sweden and one from Norway. Sweden Post is picking up the tab. Delivery is made only to Sweden, Norway, Denmark and Finland.

The stamps come in booklets printed by Rondotryckeriet in Göteborg. A single stamp franks a postcard, two frank a letter. Sweden Post isn't selling these stamps in Sweden.

So far I haven't heard what the Spanish Post Office thinks about this. Does the UPU have any postal conventions to cover this? Looks like a global marketplace for mail delivery to me, except that it is, at least for now, a kind of "perk" from the travel bureaus.

The booklet cover reads (in Swedish): "Postage for your vacation greetings." Now Swedish tourists, at least in the Canaries, can use their own stamps while catching rays closer to the Equator than the Arctic Circle.

Of course there are four face different stamps in a configuration so that you have to buy three booklets of twelve stamps to get the set. (I received information from both Lizabeth Stamp Co. and Rolf Gummesson..) — J.L.

# ENTRUST TO US YOUR STAMPS



*Icelandic official cover with 5 Aur perf. 14 + 3 Aur perf. 12 3/4 - 8 Aur. Only known on private hands with this rate. One of the lots at our auctions in 1995.*

**During the past few years we have had a real break through as one of the leading auctioneers in Scandinavia. We have reached one turnover record after the other. One reason is that we have highlighted security for the vendor together with professional skill.**

## **BUYING OR SELLING**

**Either way - contact us today. We will send you a free trial copy of our next auction catalogue.**

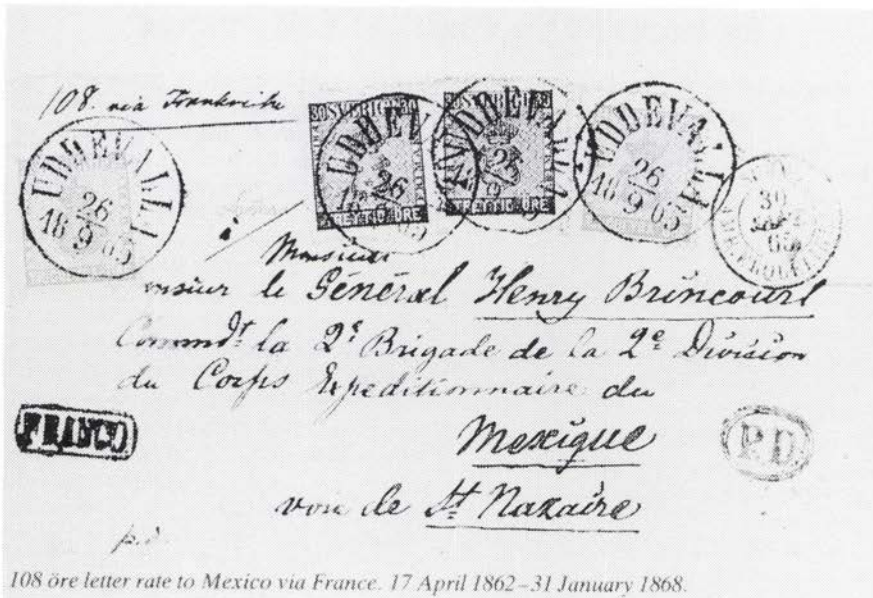
## **LARS-TORE ERIKSSON**

*Stamp Auctions*

**Box 250 ♦ S-391 23 KALMAR ♦ SWEDEN  
Tel +46 480 15090 ♦ Fax +46 480 15006**

# A Classic Letter from Sweden to Mexico

By Lauson H. Stone



A letter from Sweden via France to a French general adventuring in Mexico. Note French transit at right, rate notation at upper left.

Letters from Sweden to Mexico during the classic era of Swedish philately from 1855 to 1872 are extremely scarce. This is undoubtedly due to the fact that commerce between Sweden and Mexico at that time was practically non-existent, and vessels with Swedish crews rarely if ever called at Mexican ports. In many cases letters from Sweden to other countries exist only because of commercial correspondence and letters to Swedish crew members.

The cover illustrated here owes its existence to an entirely different circumstance, one growing out of political events in Europe — namely the attempt by the French Emperor Napoleon III to establish an empire in Mexico and enthrone Maximilian of Austria as emperor there. The letter is addressed to a general in command of the 2nd Brigade of the 2nd Division of the Expeditionary Corps that Napoleon sent to con-

quer Mexico.

The letter is franked with two 24 öre and two 30 öre stamps of the Coat of Arms design, making up the 108 öre letter rate to Mexico via France in effect from April 17, 1862 to January 31, 1868. In the upper left corner of the envelope is the notation "108 via Frankrike" and along the bottom "voie de (route of) St. Nazaire," showing the requested route and its rate. The letter was posted at Uddevalla on September 26, 1865. In the upper right corner the cover also bears a railroad transit mark "Suede Amb. Erquelines-" dated September 30, showing that the letter entered France from Erquelines in Belgium.

This cover appears on page 134 of *Swedish Letter Rates to Foreign Destinations 1855-1895* by Billgren, Bjäringer and Stone.

\* S \* C \* C \*



## Carl Pelander and Fred Brofos: Two Early Editors of *The Posthorn*

By Richard St. Clair, SCC Historian

Few of us may realize that the SCC began as a local club dedicated solely to Finnish stamp collecting. But as people change their names and careers, so did the original club that emerged out of 223 Cypress Avenue in the Bronx, New York that November 25th, 1935. Six collectors of Finnish stamps, including Carl E. Pelander — a dealer in Scandinavian stamps — organized the Finnish-American Stamp Club. Lauson Stone, writing to fellow SCC member George Koplowitz in 1969, said that Pelander was “the real founder of the Club,” providing continual stimulus for others to join and organize the club’s activities.

In the midst of the Great Depression, the club slowly grew to twenty members, but by 1940 it was felt further growth of the club would be limited by the narrow scope of Finnish stamps. Therefore a resolution was adopted to invite collectors of all Scandinavian countries to join the club. This resolution proved so successful over the following year that Harry L. Lindquist proposed the club change its name to The Scandinavian Collectors Club of New York. With an overwhelming 14-2 vote (1 not voting), the metamorphosis was enacted and the SCC became a reality on February 13, 1942.

### *The Posthorn*

*The Posthorn* was organized the following year by Carl Pelander. The first issue appeared in November 1943 using the familiar post horn design as the masthead, drawn by member Carl Emil Byer and used throughout the publication’s history. Early volumes of *The Posthorn* have a quaint humor throughout that must have kept spirits up during the trying years of World War II. At the same time, *The Posthorn* established a tradition of scholarly re-

search in Scandinavian philately that has continued to this day, earning the publication the moniker “The Bank of Scandinavian Philatelic Knowledge.”

### Carl Pelander

Pelander is remembered by some as a hot-tempered man of intense drive and convictions and great expertise in Scandinavian philately. Somehow he found time or made time, both as a vigorous collector of Tonga and as a philatelic dealer and auctioneer of Scandinavian philately, to also assemble and produce the club journal for many years. At this one has to marvel, as those were the days of hand assembled galleys, steel type and chases — no desktop publishing with computers and software, diskettes mailed back and forth. Page layout was laborious, in addition to writing, soliciting and editing articles — all by mail, no faxing.

At the close of the war in Europe, *The Posthorn* published a “Victory Issue” in July 1945. The front page editorial in this issue reads as follows:

“Philately in general, but especially so the lovers of Scandinavian stamps, rejoice in the thought that once more we will be able to contact our fellow collectors abroad, and interchange ideas regarding our mutual hobby. It will also make us, the members of the Scandinavian Collectors Club, happy to extend a welcome to our fellow collectors abroad, and band our organization into a worldwide union, in order to create greater harmony and better understanding among Scandinavian Philatelists.”

This editorial proved an accurate prophecy and signaled a tremendous growth spurt in the club in which membership gained by hundreds over a period of a few years. It also opened the doors of SCC membership to non-US collectors of Scandinavian philately.

The internationalization of the SCC was of great value in linking the wealth of knowledge of non-US collectors with that of collectors in the United States.

*The Posthorn* began as a 12-pager and expanded by degrees over the years. There were 16 pages in the *Victory Issue* of 1945, 24 in January 1949, and 32 in April 1956. In that issue, Pelander announced his resignation as Editor and the accession of then assistant editor Carl H. Pihl as his successor. In 1973 member Robert G. Stone wrote to member Robert A. Helm, "Carl Pelander started *The Posthorn* on his own initiative and for nigh on 10 years enjoyed doing most of the editorial work, let alone writing up to half the pages when there weren't sufficient contributions from others." *The Posthorn* may have lost Pelander's colorful touch when he resigned, but it maintained its high level of philatelic research articles.

#### Frederick A. Brofos

Frederick A. Brofos took over as Editor of *The Posthorn* following a disastrous loss of the entire July 1956 issue *en route* to the printer. One cannot imagine, without considerable discomfort, an editor's worst nightmare in the pre-computer era, when such catastrophes were all too frequent. Brofos took charge of *The Posthorn* at a time when SCC interest was declining in New York City. He aimed high and sought to improve the journal, contributing nine consecutive lead articles himself on Norway. Feeling that the SCC was turning into a "Norwegian Collectors Club," he called for collectors of other countries to submit articles in the July 1958 issue. Response was sluggish, and a number of obscure events delayed the publication of the journal in 1959; including another loss of an entire issue in the mail — in fact, a double issue!

Brofos was, nevertheless, the key to the continued survival of the journal. In January 1959, with all four associate editor positions vacant, he wrote, ". . . I am keeping the ship afloat single

handed." With a crew of one (himself), only one issue was managed in 1959. Elected SCC Secretary in 1959, he asked to be relieved of the editorship. That was the year in which the SCC reorganized — that is, was rescued and revitalized by the Chicago Chapter 4. The phrase "of New York" was dropped, and on April 26, 1960, the club was incorporated in Illinois, thereby inaugurating the "Chicago era" (1960-1972). *The Posthorn* was reorganized in 1960 as well. After a brief interregnum with SCC President I. E. Black serving as steward for the stalled journal, Ralph E. Danielson became the new Editor.

Fred Brofos remained on the editorial staff until 1963 while writing an important reference work for the SCC and continuing to pour out literally dozens of articles for the SCC and for many other philatelic enterprises. His booklet, *Norwegian Railway and Steamship Parcel Stamps* (1964), remains a seminal work and important philatelic research tool to this day. Brofos resumed assistant editorial work for the journal in 1965, and the following year the SCC awarded him its prestigious Honorary Member status in recognition for his contribution and achievements. He received the prestigious Carl E. Pelander award in 1975. Fred Brofos continues to be an active member of the SCC and received the Earl Jacobsen Award of the SCC in 1995, making him the recipient of the "grand slam" of the three major SCC awards, and deservedly so.

The founding labors of Carl Pelander and the heroics of Frederick Brofos stand out as lasting contributions not only to *The Posthorn* but to the SCC and Scandinavian philately worldwide. Without their dedicated efforts, our club would likely have not evolved into the large and dedicated organization that it now is. It has become one of the most successful specialist organizations in philately.



## Dramatic Crash of Zeppelin L.20 in Norway

by Frederik A. Brofos



During World War I, on May 3, 1916, at around 10 o'clock in the morning, people in South western Norway were startled by a huge Zeppelin that suddenly blew in from the North Sea. Its wild maneuverings did not make sense to anyone. In the neighborhood of Sandnes, it began to drop rapidly, going down with a great splash in the Gansfjord. The front gondola was completely submerged and 8 men of the crew of 16 jumped overboard.

Nearby were some frightened fishermen who, nevertheless, rowed out and saved the aviators. The airship commander, however, Kapitänleutnant Stabberf and his second in command swam ashore. Now, the Zeppelin rose up again and drifted westward on a fresh wind. The remaining crew threw out a couple of anchor ropes, but in vain, the airship crashed into a mountain peak

near Lake Stokkavann. It was an awful moment when the collision took place. The once elegant airship was almost bent over double. The rear gondola was torn loose and four men jumped out. One man was badly cut and bruised, but the others were not so badly hurt that they could not enjoy a smoke.

Surprisingly, the Zeppelin rose up yet again, but all of a sudden broke over and drifted down in the Hafrsfjord. The Norwegian torpedo boat "Trods" arrived and rescued the three men still onboard. They were brought to Maldesletten where the whole German crew was interned.

The internment camp on the moor included a small fieldpost office. Probably most of the mail sent went postage free, as provided for under the Hague Convention, for prisoners of war and internees. Such stampless mail tends to





**Maldesletten Fieldpost cancel. German survivors of crash were interned here.**

be easily discarded. The postmark illustrated here is therefore among the scarcer of all Norwegian field postmarks.

One of the rescued Germans related that their Zeppelin L.20 had dropped

100 bombs on England and that they had been out for one and a half days when they ran out of gasoline.

The drama was not over yet, however. The Norwegian Army Colonel Johannessen, afraid of further explosions around inhabited places, gave the order to his troops to fire on the Zeppelin wreck. A terrible explosion followed of what must have been hydrogen gas. Even in Stavanger, 8-10 miles away, people thought there was an earthquake. At Hafrsfjord, the flames shot heavenward and turned everything burnable on the airship into ashes. Only a giant aluminum skeleton was left, like a row of dinosaur bones, on the shore.

\* S \* C \* C \*

## Insight Guides to Scandinavian Countries

For those of us who go beyond the gathering of stamps, who work with cancellations, covers, postal history and such, the Insight Guides provide a source of background information. The "Insight Guides" are intended to be informative travel books for those visiting the Nordic countries on more than a passive organized tour. In comparison with the more common tour guides, which are much cheaper, these books provide a far better overview of each country. They have been issued in soft cover, high grade paper and complete color editions that include a short up-to-date history of each country, an informative estimate of the people of each, and a detailed outline of how to see everything of importance. They have been on the market for only a short time, are rarely found in book stores and usually must be ordered. Their superiority to standard travel books is rapidly making them popular. "Insight Guides" have been issued for Norway, Sweden and Denmark, and Finland. I

refer to them regularly for information about the background of specific people and places shown on stamps.

The west Nordic countries of Iceland, Greenland and the Faroes have not yet been included. These, however, are well covered in another little known series, "The Lonely Planet Travel Survival Kit," a volume of which is entitled "Iceland, Greenland and the Faroe Islands," by Deanna Swaney. The author has been dedicated to travel to the odd corners of the world and has personally travelled to a great extent in the west Nordics.

In all of these books, citizens of each country has had extensive influence in the preparation and final form as to authenticity. The Nordic countries of course are not the only areas for which the guides are available. The guides do not dwell on annual minor changes in costs, cuisine, travel problems and such. Their emphasis is on the people, their country and their mode of life.

—Russell H. Anderson

\* S \* C \* C \*

### Did You Know?

### Åland

Generally speaking, if you have an early cover from Sweden to Finland with a marking "via Grissleham," the cover can properly belong to an Åland collection as it went over the Åland sea.

## Gustav II Adolf and the Battle of Lützen Early 1930's FDCs and Commemorative Cancels

By Alan Warren



Figure 1 — An FDC from Sollefteå, 150 miles from the issuing site.

On November 1st, 1932 Sweden issued a set of four stamps depicting King Gustav II Adolf on horseback, just after he was mortally wounded in the battle against Wallenstein at the town of Lützen in Saxony. The 38-year old monarch had already served as leader of his country for twenty years and had come to be known as a brilliant military tactician.

After achieving successful victories over Russia and Poland, King Gustav negotiated alliances with France and Brandenburg. He then met the Count of Tilly at Breitenfeld in 1631 and defeated him. The victory brought rapid recognition to Sweden as a major power and established Gustav's military reputation.

He again met and defeated Tilly on the Lech River the following year. Tilly died from his battle wounds. Gustav II

Adolf then turned his attention to the rest of Europe with a goal to reach Vienna. In November the Swedish general-king met Wallenstein at the town of Lützen near Leipzig. Although Wallenstein was defeated, Gustav was mortally wounded.

Many of his military successes were due to innovative methods of warfare in which Gustav used highly trained men in small mobile units against the traditional large slowly moving columns. In addition to his military skills, Gustav recognized the importance of trade to the growth and stability of Sweden. Many of his economic plans were developed with the close help of his counselor Axel Oxenstierna.

On the death of Gustav II Adolf, his infant daughter Christina became Queen of Sweden. Four years later, under the auspices of Oxenstierna, Sweden estab-



Figure 2 — A First Day Post Card announcing airmail service.

Figure 3 — reverse of Figure 2



lished its General Post. The history of the mails in Sweden thus was born.

The design of the set of four Swedish stamps, issued on the 300th anniversary of Gustav II Adolf's death, is based on an 1855 painting by J.V.K. Wahlbom. The engraving and the dies were executed by the well known engraver of so many Swedish stamps, Sven Ewert.

The stamps were issued November 1, 1932. Although Stockholm was normally the site of new issue release, Figure 1 shows a first day cover from the town of Sollefteå, some 150 miles north

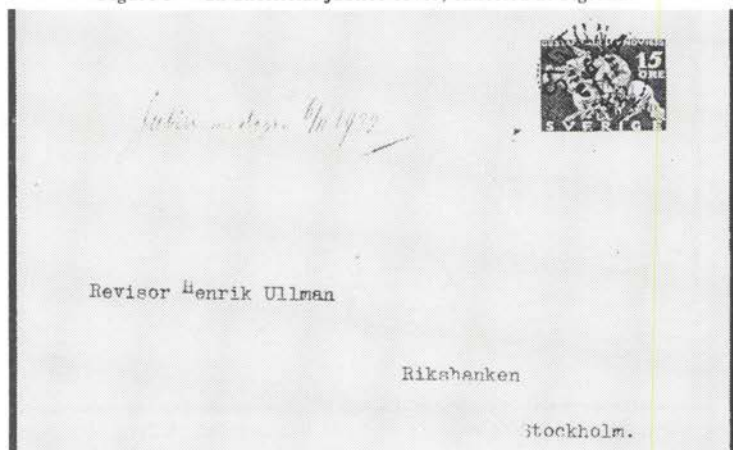
of the capital. A first day post card to Paris, canceled November 1 in the port city of Malmö, is seen in Figure 2. The address side of the card is a postal service circular announcing new airmail service from Malmö to Amsterdam and then either Paris or London. The 15 öre stamp is tied to the card with a Malmö "Luftpost" or airmail cancel and is the correct post card rate to France at the time. On the reverse is an arrival mark the same day at Paris's "Gare du nord avion," and a Paris receiving mark the following day.





Figure 4 — a commemorative cancellation from the actual 300th anniversary of Gustav II Adolf's death with a handstamp (a kind of forerunner to "cachets").

Figure 5 — an unofficial jubilee cover, canceled at Sigtuna.



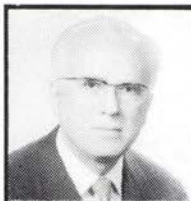
Five days after the issue date, on November 6th — the actual 300th anniversary of Gustav II Adolf's death — a special commemorative cancellation was used at Stockholm. Figure 4 is an overfranked registered cover with the entire set of four values sent to Sollefteå. The special cancel reads "Stockholm 1 / 6.11.32 / Gustaf II Adolf / 300 Års Minnet" or 300 year memorial.

In the early 1930s the idea of a printed cachet had not been introduced

in Sweden. However, a handstamp in the upper left corner reads, in Swedish, "canceled 6.11.1932 Gustaf Adolf's Day." Figure 5 shows an unofficial cancel of November 6, 1932 at the town of Sigtuna.

Just as in the United States, the preparation of first day covers during the early 1930s in Sweden was a novelty, which began to capture the attention of collectors.

\* S \* C \* C \*



## What's Happening in Finland

By Mike Hvidonov

We are pleased to note that we received some number of letters from collectors who are very interested in learning about the colors and details of the stamps of 1875, 1882, and 1885. The interest of all writers pleased me no end and I have responded and advised them to purchase *Suomen Postimerkkien Käsikirja III* (also known as the "Handbook of Finnish Stamps III"). This tome was translated from Finnish to English . . . printed and published in 1994. It contains the answers to almost every question concerning the periods of the stamps in which our new collectors are interested.

Should any problems occur to these readers they can be assured that I will hear them out and clarify their individual problems. The books are fully illustrated and the English text does

face the Finnish text for those who might know the language of the land. The books are available from Jay Smith, PO Box 650, Snow Camp, NC 27349, USA. Tel. 1-800-487-8267 or FAX 1-910-376-6750. The telephone will get you the cost and shipping details and the books will be shipped promptly.

### The Second Trial

This may be the last of the first two trials in the case of the Finnish Federation against Finland's finest philatelic professional MIKKO OSSA. Let it be sufficient to say that the case was once more thrown out of court and the accusers ordered to pay all court costs. It remains to be seen whether charges and suits may be leveled against all the accusing parties for defamation of character by the accused.

\* S \* C \* C \*

## SCC Bulletin Board

SCC Chapter 14, the Twin Cities, Minnesota chapter has a set of Scandinavian flags that can be used by chapters at their local shows.

**Show/Exhibition ideas:** Have experts answer questions from say, two to four pm on Saturday at weekend shows.

Group exhibits by subject matter and have signs that flag each subject area.

**Mega Event Regional Meeting.** This year we'll have two regional meetings. One in St. Louis at the APS Stampshow and one in New York City November 2-5 at Madison Square Garden. Contact Don Halpern, PO Box 846, New Providence, NJ 07974-0846

**SCC Library** can send supplements to the library index on diskette. Contact Dr. Melberg at PO Box 134, Allenton, WI 53002



POSTUR OG SÍMI

## Transfers & Re-entries by Alan Warren

Gunnar Nordlinder has been appointed the new head of the Postmuseum in Stockholm. He brings with him a strong background in sociology, archaeology, publications, archiving, conservation, and museum administration.

Finland Post has instituted some new guidelines for buying recent issues, effective January 1995. Collectors who use the subscriber service of their Philatelic Centre will only be able to buy current year and previous year issues. Until now subscribers could purchase stamps from the last two years. Issues from two years ago will continue to be available to customers at the Philatelic Shop on Mannerheimintie Street in Helsinki.

First Day Covers and Maximum Cards are available only for the current year. Other new offers effective in 1995 are that subscribers can now obtain cancelled (CTO) year sets, and they can also obtain new printings of definitive issues. For details write to Ms Terhi Kostainen, Manager of Subscriber Services, Philatelic Centre, Box 654, 00101 Helsinki, Finland.

### CAPEX 96

The next major philatelic exhibition in North America will be CAPEX in Toronto June 8-16, 1996. SCC's Roger Schnell is the U.S. National Commissioner in the East. If you plan to exhibit, write promptly to one of the three commissioners and obtain a provisional application and a copy of Bulletin 1 which provides details. The commissioners are:

Roger G. Schnell  
4800 N.E. 20th Terrace  
Ft. Lauderdale FL 33308

James Mazeppa  
Box 1217  
Oak Park IL 60304

Joseph Schwartz  
3230 Fieldcrest Drive  
Sacramento CA 95821

Commissioners for the Scandinavian countries include Knud Mohr of Denmark, Pekka Taitto of Finland, Sigurdur Petursson of Iceland, Arne Thune-Larsen of Norway, and Hasse Brockenhuus von Löwenhielm of Sweden.

### Finland Postal Museum

Finland Post Ltd. opened its new postal museum in March at Helsinki's main post office. Exhibits tell the story of moving the mails in that country beginning in 1638. New multimedia techniques enable the visitor to deliver mail on horse back as well as bike, to assign postal codes, and to convey the mail to Åland.

In the stamps exhibit, one can see how stamps are produced and also view part of President Kekkonen's own collection. The Post Museum is located at Station Square, Mannerheimintie 11 G in Helsinki. Hours are 10am - 7pm weekdays and 11am - 4pm on weekends. Admission is free.

### NORDIA 95

Plans for the 1995 Nordia show in Malmö continue with a 1,000 frame exhibition anticipated. Several stamps are planned as part of the promotion including a joint issue with Denmark. The event will be held in Malmö's Scania Convention Centre.

The Danish Philatelic Federation DFF has a new chairman. Jørn Walther Pedersen, who replaced Knud Mohr two years ago, has now been replaced by Ib Kristensen. Vice chairmen are Hans Jørgen Høy and Otto Kjærgaard, and the new treasurer is Palner Rundstrøm.

\* S \* C \* C \*

*Leif Landed First*



## Philatelic Zeal Under Fire A World War II Stamp Story

By Sven Åhman, SCC 936



Fig. 1 — Mixed franking WWII philatelic mail

Norway is celebrating fifty years since the Nazis left with stamps this month. Mail from the occupation era has many facets. This story is from our files and was written by Sven Åhman, who translated for the Scandinavian Philatelic Foundation and contributed to *The Posthorn*. Mr. Åhman passed away last year. We appreciate those with philatelic zeal like Sven.)

Wars have a tendency to give rise, in addition to all tragic and sinister consequences, to peripheral events of an unexpected nature. And when you find Germans involved, as they have been until now in most wars, it seems more likely than ever that some of these side-shows are philatelic. Here is a cover from the

early part of World War II that tells quite a story — of philatelic zeal under fire.

On April 9, 1940, World War II spread to Scandinavia. The German occupation of Denmark and the attack on Norway, all the way from Oslo in the South along the entire coast to the port of Narvik in the North (the outlet for shipping Swedish iron ore to Germany), was the first spectacular operation after Poland had been overpowered by the Nazis. For many years "April 9th," without mentioning the year, was a by-word for every Scandinavian.

Narvik was taken by complete surprise — so complete that British Prime Minister Chamberlain insisted in Parliament that the announcement in the

German communiqué was probably a mistake. This was no doubt due to the confusion that Narvik was mistaken for Larvik in the South of Norway. Alas, the mistake was Mr. Chamberlain's. From Narvik the Germans quickly advanced along the important railroad line all the way to the Swedish frontier at Bjørnfell and entrenched themselves there. [Note, Mr. Åhmen identified the town as Bjørnøya but in the photocopy illustrations we have the cancels look much more like Bjørnfell and so we use Bjørnfell here. Bjørnfell is the last Norwegian station on the Narvik — Abisko line which conforms to what follows. Bjørnøya is an island half way to Spitzbergen from the mainland].

They were temporarily chased away when the British and French forces took Narvik and sank several German ships in the harbor towards the end of May, only to have to withdraw again very quickly.

This cover from the Narvik area, sent to Germany on May 10, 1940, is from the period before the ill-fated Allied attempt to retake Norway quickly from the Germans. It is a letter worth looking at closely. Here was a small German unit entrenched at the last Norwegian station on the "ore railroad" from Narvik into the mine region in Swedish Lapland.

Although no Allied action had yet begun, it was certainly to be expected at

any time. What does one of the soldiers at Bjørnfell do in between attending to his military duties?

He takes an envelope and franks it with two Norwegian stamps of the Queen Maud set; certainly unable to foresee that these stamps were to be banned when the traitor Quisling came into power, after the army was defeated, and the King forced to flee the country. Sending the letter by "Feldpost," he put, in addition to the Queen Maud stamps, a German stamp just issued for the occasion of Hitler's birthday on April 20 and a German 5 pfennig newspaper stamp on the envelope.

We may assume that he then made his way to the local post office at Bjørnfell. There he must have shown his machine-pistol to the postmaster, for it takes very little imagination to conclude that his was an argument persuasive enough to obtain a neat cancellation for the "Oberskretär" in Stuttgart.

I no longer remember how this pathetic document ever came into my hands, except that it must have been some time in the 50s or 60s when I again took up stamp collecting after a long period of dormancy since my boyhood. I found many strange items for my Scandinavian cover collection on that vast New York stamp prairie. How the cover landed in New York after the end of World War II remains a mystery.

\* S \* C \* C \*

## Scandinavian Area Awards

At the HOUPEX show in Houston, I. Faroe received a vermeil for an exhibit of "Faroe Island Postmarks to 1975." Gordon C. Morison received the reserve grand, a show gold, and the APS pre-1900 medal at the Omaha Show for his Iceland stationery exhibit. At the Sarasota National Stamp Exhibition, Michael Baranovic received a silver-bronze for his "Norway Posthorn Issue Small Die 1886-1893."

At SANDICAL, in the one-frame competition, Donald B. Brent received a silver for "Denmark's 3 Øre Postal Card," and a silver-bronze for "Denmark's 2 Øre Wavy Lines 1905-1933." William H. Caldwell received a bronze at the Nashville Stamp Show for his "Finland: Military Administration of East Karelia."

\* S \* C \* C \*

## Regional Meeting at APS's Stampshow 95 St. Louis, MO August 24-27, 1995

Meet me in St. Louie, Louie. Meet me at the stamp show for a great weekend. We can buy some stamps and covers for our collections, have an SCC regional meeting, see a slide-show or two, eat dinner together, and have a grand old time.

### What, When, Where?

What? SCC will hold a regional meeting in conjunction with STAMPSHOW 95, the site for APS's 109th annual convention this year. When? August 24 - 27, 1995. Where? At the new Convention Center in downtown St. Louis, Missouri. Make plans now to attend a great show.

In addition to the show and SCC regional meeting, there's a lot to see and do in the greater St. Louis area. Possibilities include: a ride to the top of the Gateway Arch; a tour of the Old Court House where the Dred Scott decision was handed down, or the restored Union Station. Maybe going down to the levee and board the Admiral Mississippi Riverboat Casino; maybe a tour of the Anheuser-Busch Brewery; a visit to Grant's Farm, or the world famous St. Louis Zoo; or, any one of many other area attractions (like a tour backstage of the famous Fox Theatre). So plan to stay longer than a day or two if at all possible.

APS has selected the Holiday Inn - Downtown Convention Center, 811 N. 9th Street, to serve as official host. Rates for STAMPSHOW are \$70.00 for a single, or \$80.00 for a double. If you want to secure this special rate for the show, call (314) 421-4000 to make your reservations. (There are other very nice hotels downtown, but none as close as this one. Check an AAA tour book, or write and ask me to send names of other hotels you can chose from.) You can preregister with the APS. This will be the biggest and best show around St. Louis in some time.

— Marvin D. Hunewell  
PO Box 190047  
St. Louis, MO 63119

### Stamp Upsets Hockey Player

Sweden generally issues a commemorative when it hosts a world athletic event. This year it is the World Hockey Championships. Sweden Post chose to show the winning goal in the 94 Olympics. Showing the winning goal means showing the losing goalie and the stamp was taken from a photograph.

The philatelic press has publicized the losing goalie's displeasure. I can't blame the guy. *Newsweek* hints at a lawsuit. I don't think I would like my failures commemorated on a postage stamp. Swedes are supposed to be "sensitive." This reminds me of a story about Kurt Vonnegut that after WWII he sold SAABs and discovered that in the glove compartment of new SAABs were brochures extolling the engineering virtues of SAAB — including the parts they had manufactured for German bombers.

It must have been a great photo though. The stamp is beautifully designed. The Swedes do make great stamps.





## Scandinavian Literature Notes

By Alan Warren

In the December issue of the British publication *Scandinavian Contact*, Susan Oliver illustrates a wreck cover sent in 1940 from Japan to the Faroes. The cover went to Vancouver by ship and then by rail to Montreal where it was placed on board the *SS Eros* destined for Liverpool. However, the ship was torpedoed on June 7th and beached on the coast of Ireland, where some mail and cargo was retrieved. Covers surviving this ship wreck are marked "SALVED FROM THE SEA."

In the same issue a joint effort by the British Scandinavia Philatelic Society and the Scandinavian Collectors Club resulted in an article by Martin Fishenden and Frank Baze. The subject is a plating study of the 2 öre Ringtype issue.

### Sweden Postal History

Every couple of years the Society for Swedish Postal History Documentation (SSPD) publishes an anthology of articles titled *Aktuellt om Posthistoria*. Issue number 4 was published last year and begins with an article by Sören Andersson on parcel cards sent from Sweden to Norway around the turn of the century. Jan Billgren writes about official post cards, and Göran Linderöth illustrates some of the crown post markings used in the 18th and 19th centuries.

SSPD was established in 1970 and celebrates its 25th anniversary this year. For information about the Sällskapet för Posthistorisk Dokumentation, write to Jan Billgren, Bredgatan 7E, 2221 Lund, Sweden.

In issue 4-94 of the Norwegian journal *Frimerke Forum*, Birger Løvland writes about the postal history of the area near Hardanger glacier. For the topicalist there is an illustrated check-

list on ships on Norwegian stamps. In the December issue of *Svensk Filatelistisk Tidskrift*, Jan Billgren discusses inbound and outbound registered letters of Sweden. In the December issue of *Postal History*, published by the Postal History Society of Great Britain, Alan Spencer concludes his 2-part series on the Thirty Years War and Swedish Pomerania, with a focus on mail to and from Stralsund.

In the December issue of *Skilling* from Denmark, Anker Bloch lists the numeral censor marks used on covers leaving Denmark after World War II, i.e. from May 1945 on. He also asks that any unlisted censor numbers that are known to collectors be brought to his attention. In the December issue of another Danish journal, *Posthistorisk Tidsskrift*, Leif Ørndorf presents postal rates of the Danish West Indies for the period 1905-1917. In the same issue Erling Berger writes about the "franco Stade" marking found on Danish stampless covers.

### Sven Ewert

In the December issue of *Bältespännaren*, authors Gunnar Dahlstrand and Åke Torkelstam both have articles on the test stamps prepared by Swedish engraver Sven Ewert, who engraved many of the country's stamps during the 1930s and 1940s. In the same issue Gösta Ohlsson writes about the local post of Trollhättan.

In the November 1994 issue of *Philatelistische Nachrichten* from Germany, Detlef Fürth discusses the Arms type postal cards of Denmark. In his continuing series on post office place names of Greenland, Rolf Dörnbach provides some background on Qaqortoq or Julianehåb. In the same issue Dörnbach also presents a nice overview

of Greenland's kayak post.

An unsigned article in the January issue of *Dansk Filatelistisk Tidsskrift* discusses stampless and postage due postal cards of Denmark before 1907. In the same issue Niels Klottrup illustrates some turn of the century covers between Denmark and Germany and discusses postal rates to the border.

#### Friends of the Postal Museum

Members of the Föreningen Postmusei Vänner of Sweden receive a newsletter about the postal museum in Stockholm as well as the yearbook *Postryttaren*. The 1994 issue contains articles on Swedish thematic philately, the "Stockholm 30" markings on military mail of 1918, the Swedish post office in Hamburg, and other Swedish postal history. Information on membership in the friends of the museum can be obtained from Postmuseum, Box 2002, 10311 Stockholm, Sweden.

In the January issue of *Het Noorderlicht* from Holland, C. Szerkowski writes about various types of the first booklet issued in 1975 by the Faroes. In the same issue H. C. van

Meeningen discusses the postal cards of Sweden from 1872 to 1897, and J. A. Konings tells the story of the composer Edvard Grieg as reflected in the stamps of Norway from a thematic point of view.

In the December issue of *Dansk Filatelistisk Tidsskrift*, Thomas Moshage writes about fieldpost and prisoner-of-war mail from a Schleswig man on Guam at the time of World War I. In the January/February issue of *Svensk Filatelistisk Tidsskrift*, postal historian Jan Billgren describes a cover written by August Strindberg two months before he died in May 1912. In the same issue Harry Hohndorf describes a type of military report card which could be delivered by courier or even mailed, suggesting it is a type of military postal stationery.

In the January issue of *Skilling* from Denmark, Jørgen Sømød discusses Denmark's encased postage stamps. In the same issue Jan Krolak of Denmark's Perfin Collectors Club writes about Danish perfins.

\* S \* C \* C \*

## Fifty Years Ago Today

Fifty years ago today, in the April 1945 issue, the lead story was on the booklet stamps of Sweden. Roland D. Morse discussed the experimental nature of the rotary press booklet issues of the early twenties; covering paper varieties and the plate types — including illustrations of the two types of the 5 öre Standing Lion, 10 öre Standing Lion, 15 öre Gustav and the Postal Savings issue.

Edwin Halvorsen discussed a rare item of Danish philately. Before the issue date of the 1912 Post Office Building stamp the postal authorities (and King Christian X) had an inaugural dinner to celebrate the new building.

At the dinner uniformed postal carriers served. The menu cards had the new 5 Kr stamp affixed and canceled. This was September 22 (issue date October 1).

Mr. Halvorsen also sent detailed "corrections" to an earlier article on the K.D.P.A. postal marking; itemizing facts about Danish and North German postal history.

The Hornblower was stuck on the war (of course): "Carl Pihl somewhere in Europe has been promoted to the rank of Major ... Commander Dahlstrom has received the D.S.M. for keeping his ship in one piece during the Air Raid in Bari, Italy ... and our nice quiet Ernest Cohn, formerly of Pittsburgh, is now an M.P. — and we always thought M.P.'s were tough ..." There were stateside events as well: "have you heard all the scandal about the SCC's members at the Helvetia Dinner ... Sid Barrett and Carl Pelander yodling Swiss songs, kind of cheesy at that, but it got worse when Frank Maybury joined up with them . . ."

## EXCITING SCANDINAVIA!

*For outright purchase.*



ICELAND, 1892, 50 aur, block of four, reconstructed, Dyrafjörður cancel, with 1995 DFF cert., rare and possibly unique multiple. Net \$750.00



SWEDEN, 1900, 1K Oscar, imperf. mint never hinged top margin pair, extremely fine. Net \$ 600.00



FINLAND, 1875, 20p Ultramarine tete-beche pair, superb centering and color, with 1994 Gummesson cert. Net \$2,000.00



ICELAND, 1902, 4a Christian IX, "AUP" variety. Net \$125.00



DENMARK, 1863, 16s, superb centering & color, with 1989 Nielsen cert. Net \$500.00



DENMARK, 1955, 30/20s double surcharge, lightly hinged, with 1994 DFF cert., rare. Net \$750.00



**WE ARE PLEASED TO  
ANNOUNCE THE SUCCESS-  
FUL PLACEMENT OF  
THE AWARD-WINNING  
CHRIS MCGREGOR COLLECTION  
OF FAROE ISLANDS**



*We thank Mr. McGregor for the confidence he showed in our company when he entrusted us with his entire collection and asked us to negotiate its outright sale. Duplicate material from Mr. McGregors collection is currently being offered in our sales.*

**WE ARE NOW ACCEPTING CONSIGNMENTS FOR  
OUR UPCOMING SALES IN THE FALL.**

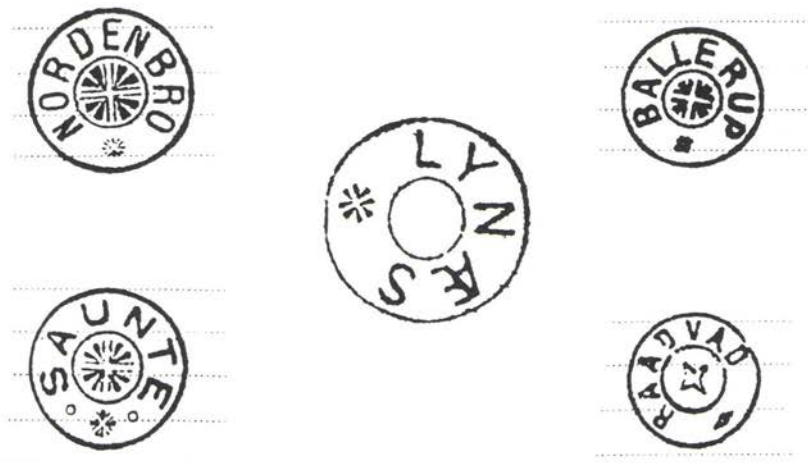
**WE ARE OUTRIGHT BUYERS OF BETTER  
INDIVIDUAL PIECES AND ENTIRE COLLECTIONS!**

*For more information, please contact Tor Bjork.*

**PARADISE VALLEY STAMP COMPANY, Inc.  
P.O. Box 8948, Scottsdale, AZ 85252  
Tel: (602) 948-0087, Fax: (602) 596-6828**

## Danish Star Cancelers: An Examination of a Few of the Devices

by Alfred A. Gruber



These star cancel illustrations are from imprints made at the Danish Postmuseum. Presumably they are from cancelers in the condition at the end of their use. This article wonders if there are correlations among heavy use, heavy wear of canceler, and value of markings on philatelic items.

Having been infected by the Danish star cancel virus for more than a decade, and finding relief painfully slow, I looked for more. Why weren't collectors finding varieties when a canceler became damaged from simply being dropped? Shouldn't there be wear at the heavily used letter collecting stations? No one in the U.S. seemed to know.

The chance to examine star canceling devices came in May 1993 at the Dansk Post-og Telegrafmuseet in Copenhagen. In a large glass case are 29 "star" cancelers of the three known designs. Time did not permit requesting close examination and measurements. Subsequent communication with the museum corrected a few observations. What follows are opinions of the inking ends through the glass.

The barrels are always cylindrical with a slight taper at the ink end. TAARBÆKs, [T], the earliest stars, are brass and show the most wear. The second type, FAAREVEILES, [F], are brass or steel. The final kind, UDSLEBNEs, [U], or mute stars, are either FAAREVEILES with the centers removed or totally new models of steel [ *Perhaps a better name for Udslebne cancelers would be "ground out"* ]. Consultation with tool makers leads to the conclusion that metal was cut away by hand to create the rings, stars and names of all these devices. The cancelers on display are not new, but represent condition at the end of use and I assume were originals.

The following Table 1, describes the physical appearance of the units at the museum. Dates of use are from the KE *Special Catalog*, 1986.

TABLE 1

<u>CANCELER NAME</u>	<u>TYPE</u>	<u>MATERIAL</u>	<u>COMMENTS</u>	<u>USE DATES</u>	<u>YRS</u>
AABYBRO	T	Brass,	Outer ring edge rounded	1872-1876	5
CHARLOTTENLUND	T	Brass,	Thin rings. Outer ring outer edge rounded, Inner ring hammered. possibly corroded after <b>D</b> .	1867-1877	11
RAADVAD	T	Brass	Thin rings. Outer ring bent in slightly at last <b>D</b> .	1868-1876	9
VEDBÆK	T	Brass	Outer ring outer edge severely rounded (Worn smooth)	1873-1897	25
AARHUS INDL. I	F	Brass	No obvious wear	1902-1912	11
BALLERUP	F	Brass	Somewhat rounded outer ring	1875-1879	5
BRED [Typ 1]	F	Brass	Outer ring outer edge severely rounded	1888-1904	17
HARALDSKJÆR FABR.	F	Brass	Bright and shiny	1903-1908	6
HVIDOVRE	F	Brass	Heavy design lines and clean	1928-1929	2
Kh. V2	F	Brass	Heavy design lines and clean	1927-1929	3
Kh. Ø. 1	F	Brass	Heavy design lines and clean	1926-1929	4
LUNDE	F	Brass	Sharp outer ring	1882-1904	23
NORDENBRO	F	Steel	Bright and shiny	1906-1911	6
RIIS	F	Brass	Bright and shiny Outer ring bent inward between left and bottom star	1900-1929	30
SAUNTE	F	Steel	Bright and shiny Inner part darker	1906-1908	3
Str. 1	F	Brass	Heavy design lines and clean	1924-1932	9
TAPS	F	Steel	Bright and shiny Inner part darker	1909-1911	3
VALBY 1	F	Brass	Heavy design lines and clean	1925-1930	6
VALBY 2	F	Brass	Heavy design lines and clean	1927-1930	4



VANDEL	F	Brass	Bright and shiny	1903-1908	6
VEMB	F	Brass	Bright and shiny	1903-1908	6
AARHUS INDL. 3	U	Steel	Clean, lathe removed center star	1929,	1+13
Ab. 2.	U	Brass	Heavy design lines, Ctr star lathe removed	1929-1931	3+1
BRH. 2.	U	Brass	Heavy design lines, Ctr. star cut back but visible	1929-1933	5+5
Kh. L 2	U	Brass	Heavy design lines, Ctr star removed by hand	1929-1930	2+2
LYNÆS	U	Brass	Heavy design lines (Larger than the F)	1939-1944	6
SEJTH	U	Steel	Clean	1929	1+16
TØDSØ [Typ 1]	U	Steel	Clean, lathe removed center star	1929-1939	11+21
VEJGAARD	U	Steel	Heavy design lines and clean	1929-1931	3+23

While the sample size is small, it appears brass was used along with steel right up to the final years of the "stars." The steel cancelers apparently came into earliest use in 1906.

The data show that within the sample available, the early brass constructed TAARBÆK and FAAREVEILE cancelers were sometimes worn, damaged and possibly corroded from the ink. All the steel units were in excellent condition. An important improvement occurred, even in brass, when the ring design was thickened.

Surprisingly all UDSLEBNE examples on display except LYNÆS are reworked FAAREVEILES. I suggest the museum exhibit some of the large later UDSLEBNE. The museum has approximately 300 "star" cancelers, and hopefully some investigator will undertake an expansion of my observations.

The relative scarcity of these postal markings ought to be directly related to the catalog value when the information has been attained over a long period. Kirsten Ehlers' (KE) experience would qualify her catalog for such comparisons. Table 2 lists catalog values of the cancels in DKr. The higher values should represent rarity. ([L] in the value column comes from the German word *Liebhaver*. *Liebe* means love and this kind of item may be bought by some eager buyer willing to pay most anything!) TAARBÆK prices vary depending also on the stamp issue.



Three imprints made by cancelers mentioned in the conclusion. Is the little "ding" in Vedbæk because the canceler was dropped? Charlottenlund received heavy use, its marking has less value, and here we see it shows heavy wear. On the other hand, what can we learn from Haraldskjær Fabr.?

TABLE 2

<u>CANCELER NAME</u>	<u>TYPE</u>	<u>VALUE, DKr</u>
AABYBRO	T	L
CHARLOTTENLUND	T	100 to L
RAADVAD	T	2000 to L
VEDBÆK	T	300 to 10
AARHUS INDL. I	F	20
BALLERUP	F	600
BRED	F	20 to 40
HARALDSKJÆR FABR.	F	70
Kh. V2	F	3000
Kh. Ø. 1	F	75
HVIDOVRE	F	1000
LUNDE	F	35
NORDENBRO	F	50
RIIS	F	10
SAUNTE	F	60
Str. 1	F	15
TAPS	F	75
VALBY 1	F	350
VALBY 2	F	125
VANDEL	F	20
VEMB	F	10
AARHUS INDL. 3	U	L
Ab. 2.	U	100
Brh. 2.	U	50
Kh. L 2	U	L
LYNÆS	U	10
SEJTH	U	L
TØDSØ	U	5 or 30
VEJGAARD	U	15

The following comments apply exclusively to brass units. Judging from wear, **RAADVAD** is an example of a little used early canceler with a high price. The ding in the outer ring possibly resulted from a drop onto the floor. **HARALDSKJÆR FABR.** is bright and shiny indicating little use, but still cheap. [*Since Haraldskjær Fabr. was from a mill, perhaps they took better care of the canceler at the mill. Also, this cancel is one of the more expensive ones in Arnholtz's book.*] **CHARLOTTENLUND** and **VEDBÆK**, on the other hand, are severely worn and, as expected, relatively cheap. **AABYBRO** is a puzzle showing wear, yet scarcity, via an "L" listing. The heavy design of **Kh. V2.** shows no wear and is expensive; although it was only used for two years it was assigned to the busy Copenhagen V. office. Leaves a bit of room for pondering doesn't it?

Many thanks to Eric Jensen of the Post-og Telegrafmuseet for his cordial assistance and copies of the official canceler acquisition papers. Further thanks to the culprits that infected me with the "star" virus. You know who you are.

+ Indicates years in UDSLEBNE service plus years previously as a FAAREVEILE canceler (see the KE catalog).

SCC CHAPTER 13 TWENTY-EIGHTH ANNUAL AUCTION  
JUNE 27, 1995

General and Specialized Scandinavia.

All areas of Scandinavia are included. We will send the complete catalog plus pictures of many of the lots POSTPAID to anyone who sends us a note or postcard requesting it. Our address is: SCC CHAPTER 13, BOX 59, ROCKLAND, DE 19732.

There is no buyer's commission. Catalog values are from the 1995 Facit unless otherwise indicated. Here are some SAMPLE SELECTIONS FROM THE AUCTION.

LOT #		CAT VAL	START BID \$
DANISH WEST INDIES			
4 o	2 (2) 1886, 3c, 4 nice margins, FVF	(SK 450)	20 P
10 o	7a (7b) 4c, 1st printing brown/ultramarine, Fine	(SK1250)	55 P
12 *	9v1(9b) 1874, 7c, inverted frame, VFLH	(SK 500)	30 P
15 **39	(38) 2F harbor, VF NH	(SK 300)	23 P
17 **40	(39) 5F harbor, VF NH	(SK 600)	45 P
DENMARK			
26 C	2IVav1 dbl B frameline var(Pl III No..42)on cvr Holstebro to Thisted cxl 29/9 1854, Fine	(SK1150)	50
27 C	9v1 Variety Pl. VII No.21 on cvr w Footpost cxl,FVF	(SK 500)	25
32 o	32 (29) 12c, 7 vars incl AFA 26t/26w, FVF	(SK 250)	35
33 o	33var 16c, 1st prntg, AFA var 27t, cntrd L,near F	(SK 400++)	22 P
39 *	70v1 (73var) 10c "Hairlock" var, just F OG	(SK 250)	28 P
43 B*	110TB1,110TB2, Tete beche 4-blx, VFLH	(SK 800)	60
44 o	120v2 (82 var) "KOBFNHAVNS" error, just Fine	(SK3000)	120 P
45 o	122 (81) 35c on 32c official, VF	(SK 400)	27 P
46 C	131 pair,Star cxl VEJGAARD,side cxl AALBORG 20.10.15		10
53 o	226v(197var) spot in flag var., VF	(SK 350)	22 P
59 o	27B-80 4-blocks, nice SON cds, VF	(SK 590)	45
64 o	331 w. SON mute S 1. cxl, tied to piece, VF	(DK2000)	110 P
73 o	RE30-3,35,42 ad pairs, all cds, FVF	(SK 380+)	35
79 o	RE63, Alfred Benzon, difficult ad pair, FVF	(SK 300)	30 P
84 o	GROUP: 72 diff Star cxls, many VF strikes, FVF	(DK1078)	65
85 o	GROUP: 93 diff Mute Star cxls, many VF strikes, FVF		50
91 *o	GROUP: 165 Mostly different revenues, FVF lot Nelson(\$ 100 )		35
FINLAND			
102 o	15SC1a(20) 10p 1881, FVF	(SK 550)	35 P
103 o	17LC3a(29c) 25p,compound perf 11x12.5,pinhead th,VF	(SK1600)	50 P
106 o	45 (56) 1R, 2 sp at B,cxl ABO F. 16 XII 08, VF	(SK 800)	38 P
113 o	164 (B4) 2MK+20p key value, cds "28 X 30", FVF	(SK 450)	34 P
114 **	173 (BB) 1Mk+4Mk black, semi, VF NH	(SK 200)	18 P
115 o	173 (BB) same w cds dated Oct. 1931! VF	(SK 450+)	39 P
131 o	29 pair (rejoined) w cpl Abo ship in oval cxl, nice		12
139 C	GROUP: 32 Commercial cvrs, 1920's or earlier, incl 11 Registered ones, nice lot	(SK1200+)	50
140 C	ALAND: 1/77 Complete set FDC's first issue,93 covers from 31 towns, VF pristine condition	(SK2852)	68
GREENLAND			
147 *	P10b(Q7a) 70c lilac, unused no gum, clean color, FVF	(SK2000)	60 P
150 C	1 (sgl) + 3 (pair) on 11 FDC, each cancelled in a different Greenland town, nice lot, VF		150



## ICELAND

158 *	2 (2)	4sk red, bright, excellent centering, VF OG	(SK1200)	60	F
162 *	5 (5)	3sk gray, no gum, nice color, Very Fine	(SK2700)	120	F
173 o	13d (12)	16a, cxld (F)RA ISLAND, superb	(SK 375+)	30	F
175 *	14a,b(13)	20a both printings, bright, Fine OG	(SK8250)	175	F
179 *	18 (19)	50a bicolor, bright copy, nearly VF, LH	(SK 550)	35	F
186 o	43 (67)	50a I GILDI '02-'03, bridge cxl, nearly VF	(SK 900)	75	F
187 o	44 (68)	100a I GILDI, bridge cds, F	(SK 550)	30	F
188 *	44v1(68a)	same, inverted ovpt, good color, F LH	(SK 600+)	80	F
189 o	48 (49)	3a, shallow tiny thin, cds, nearly VF	(SK3600)	200	F
191 *	50v1(51b)	4a bicolor inverted ovpt, VF OG	(SK 500)	63	F
193 **	51 (52)	5a I GILDI (black), Fine, NH	(SK3000)	190	F
195 **	52 (53)	6a I GILDI (black), init on back, FVF NH!	(SK5500)	400	F
197 o	57 (58)	40a, dated BLON(DUOS) cds, nearly VF	(SK 450)	38	F
198 *	61v1(47a)	20a inverted red I GILDI, Fine OG	(SK 400)	70	F
204 o	77 (72)	3a w faint King's visit cxl, almost Fine		45	P
211 o	95 (103)	6a, key value, beautiful copy, cds, VF	(SK1100)	75	F
220 o	114-20(92-8)	Cameo set complete, FVF	(SK3200)	120	F
224 o	118 (96)	1K yellow, cds, bright color, VF	(SK 550)	40	F
225 o	121 (149)	2K on 25a orange, lt cds, nearly VF	(SK1000)	60	F
239 o	163 (C10)	1K Zeppelin, SON "6 IX 31", Fine	(SK1100)	60	F
244 *	173v(152var)	3a, "side door", 2 sht pfs @ R, VF LH	(SK 400)	40	F
245 *	178v(157a)	20a double print variety, FVF OG	(SK2500)	150	P
246 o	183 (162)	50a Parliament, key value, select copy VF	(SK 950)	45	P
250 *	189-93(C4-8)	Parliament air set, FVF OG	(SK1700)	80	P
251 *	189-93(C4-8)	same, 20a has gum bend, VF most VLH	(SK1700)	65	P
255 o	204-9,8	stmps(incl 205C2,206C2),select copies, VF	(SK 900)	75	P
261 o	BL1 (B5)	1st souvenir sheet used, FVF	(SK2400)	100	
262 o	BL2 (B6)	cancelled "9.10.38", VF	(SK 250)	20	
268 **	259 (235)	2K 1940 WF hival, FVF NH	(SK1800)	100	F
269 **	263-4,280(229a-231a)	perf 11 1/2 set, VF NH	(SK1200)	50	P
270 C	268-73	on long registr FDC, Pingvellir cxl, FVF	(SK 800)	45	
272 **	273 (245)	10K hival, nearly VF, NH	(SK 800)	45	P
273 o	273 (245)	same, but used on piece, nearly VF	(SK 850)	50	P
291 *	TJ15(O25)	3a I GILDI '02-'03, SCARCE, Fine+, LH	(SK2200)	190	P
293 *	TJ17(O27)	10a I GILDI '02-'03, Fine, LH	(SK3000)	195	P
295 o	TJ18(O28)	10a I GILDI '02-'03, bridge cxl, F+	(SK 400)	20	P
297 o	TJ20v1(O30 var)	, no first I variety, cds, Fine	(SK 600)	70	P
299 *	TJ21a,TJ21b (O20 vars)	, FVF, VERY LIGHT HINGED	(SK3507)	270	P
300 *	TJ21v1(O20 var)	inverted overprint, signed, FVF,OG	(SK4000)	425	P
304 o	TJ54(O51)	5k Cameo, 1923 cds, select copy, VF	(SK1900)	150	P
307 o	GROUP: 46 Stamps w 21 diff foreign cxls comprising	5 cities, paquebot, Fra Island, Skipsbrief, few flts			
		but mostly nice			200
308 o	GROUP: 10b//28 5 stps w Crown-Posthorn cxls: HEST(EVRI)	(KAL)FANES, (KIRK)JUBAER, PRESTHOLAR, (STADAR)BAKKI,	(SK2090)	115	
		FVF lot			
311 o	GROUP: 50 Diff # cxls, majority complete #'s, FVF	(SK3524)	120		

## NORWAY

346 *	1 (1)	4 Margins, unused, no gum, Moldenhaur certificate, Fine to Very Fine, VERY RARE	(SK50000)	2000	P
348 o	3 (3)	3s, light pen cancellation, nearly VF	(SK 700)	40	P
357 o	181-3(B1-3)	First Nordkap set, cds, nearly VF	(SK 850)	55	P
361 o	277(218)	50c wmkd, tiny thin in margin, VF	(SK3500)	35	P
362 **	279-98(220-38)	cpl V ovpts unwmkd, VFNH	(SK 600)	40	P
363 o	179-98(220-38)	same set used, VF	(SK1950)	90	P
369 **	H18-O	1941 Booklet complete, VF NH	(SK 800)	40	
370 **	H19-R	1941 Booklet complete, FVF NH	(SK1200)	60	
373 C	LM1b	Lykkebrevet B on cover, VF	(SK 400)	25	

Send EARLY for your copy of the complete catalog. We think you will find it an interesting auction.

## The Swedish Post Connection via Pomerania 1683-1814

By Gordon Hughmark

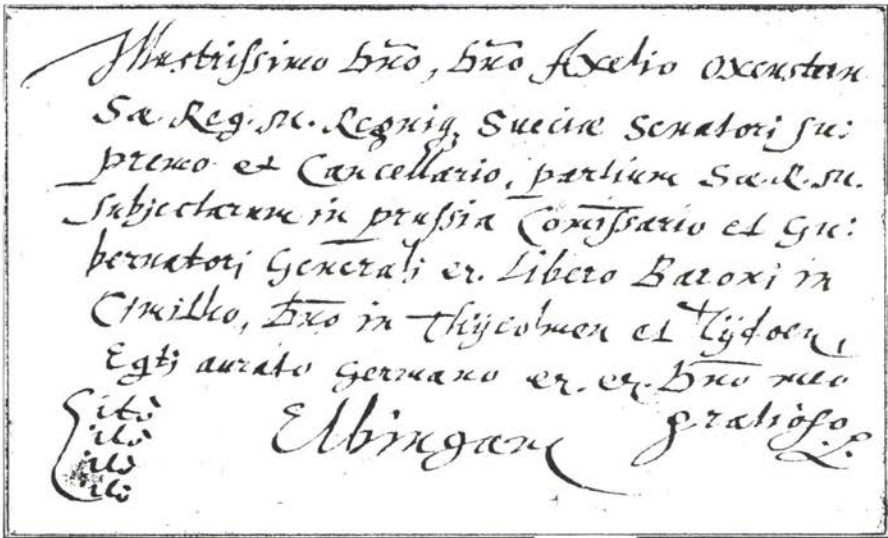


Fig. 1 — 1630 letter to Elbing has four “Cito” markings at lower left emphasizing the urgency of the letter. (Elbing was then a possession of Sweden.)

This article follows up Mr. Hughmark's discussion of the Swedish postal route through Denmark to Hamburg between 1580 and 1814 in the November 1993 Posthorn.

The periodic wars between Sweden and Denmark created Swedish interest in an alternative post route to continental Europe and Hamburg than the route through Denmark. Sweden had participated in the Thirty Years War (1618-1648) with an objective of gaining German territory on the southern coast of the Baltic Sea. The Treaty of Westphalia in 1648 gave Sweden the town of Wismar and territory in Pomerania that included the town of Stralsund and the island of Rügen. Denmark was forced to cede the province of Skåne to Sweden in 1658. The distance across the Baltic from Ystad at the southern tip of Skåne to the island of Rügen is about 60

miles. Thus a seapost route between Ystad and Rügen with access to Stralsund was an attractive potential route that would not require passage through Danish territory.

A Swedish post connection across the Baltic had existed earlier. Swedish military action in Poland during the early years of the Thirty Years War resulted in an armistice in September 1629 by which Sweden had temporary possession of Livonia, Elbing, Pillau and Memel in the eastern Baltic. These possessions were formed into a government section with Axel Oxenstierna (later founder of the Swedish postal service) as governor-general. A post connection between the Swedish government and Elbing (near Danzig) was maintained from 1628 to 1631 by the Swedish navy. Figure 1 shows a cover of August 1630 to Elbing that was prob-

ably conveyed by a Swedish naval vessel. The inscription "cito" repeated four times showed the urgency for delivery of the letter.

Beginning in 1660 there were continued proposals and trials for a Swedish seapost connection with Pomerania to allow Sweden to be independent of post conveyance through Denmark. A seapost operated on an irregular basis beginning in 1664. In 1683 King Charles XI accepted a proposal to rent two Stralsund ships for a regular connection between Ystad and Wittow on the island of Rügen.

The first trip was from Stralsund in July 1683 and there were a total of 40 trips before the route was closed for winter. The king had also approved construction of two post ships at Stralsund for use in 1684. The "Posthornet" had a length of 41 feet and made its first voyage in April 1684. The "Postryttaren" had a length of 64 feet and made its first voyage in August 1684. Mail, passengers and freight were carried by these sailing vessels. The ships landed at Wittow because the channel at Stralsund was too shallow. The mail was taken by boat from Wittow to Dwardsdorf and then by horseback to Altefähr across from Stralsund on the mainland. Later the mail and passengers could be taken by a small boat from Wittow to Stralsund. There were a total of 77 round trips between Wittow and Ystad until cessation for winter on December 10. Typical time required for the cross Baltic trip was one day but this varied considerably depending upon the wind and weather.

A Hansa messenger route had extended from Amsterdam to Riga since the 14th century. These post messengers traveled from Hamburg on foot and later on horseback via Lübeck, Wismar, Rostock, Stettin and then with the Danziger messengers via Königsberg to Riga.

The establishment of the seapost between Sweden and Pomerania created Swedish interest in a direct land connection between Stralsund and Ham-

burg by a passenger post. A Swedish post wagon route began between Stralsund and Hamburg via Wismar and Rostock on June 15, 1685 after permission for passage had been obtained from the Dukes of Mecklenburg and Saxony-Lauenburg. The Swedish post at Stralsund also connected with Lübeck because an agreement had been concluded between Lübeck and the Swedish government for post transport between Wismar and Lübeck in 1646.

The Swedish seapost route via Ystad and Pomerania was interrupted by the Great Northern War (1700-1720) in which Sweden and Denmark were on opposing sides. Swedish Pomerania was taken by the combined armies of Denmark and Prussia in 1715. A treaty between Denmark and Prussia divided Swedish Pomerania so that Denmark occupied the northern part including Stralsund and Rügen. Swedish Pomerania that had been occupied by Denmark was returned to Sweden in 1720 but the part that was occupied by Prussia including Stettin remained with Prussia.

The seapost between Ystad and Swedish Pomerania resumed and the post wagon communication between Stralsund and Hamburg was reestablished in 1721.

The seapost between Ystad and Pomerania continued until the French occupied Swedish Pomerania in 1807 during the Napoleonic wars. The seapost reopened on June 21, 1809 after hostilities ceased in the Baltic and Pomerania. A treaty with Napoleon of January 1810 returned northern Pomerania to Sweden but there was to be no trade with England. The French occupation ended March 9, 1813. Swedish Pomerania and Rügen were ceded to Prussia on October 23, 1815 in accordance with a treaty of June 7, 1815 between Sweden and Prussia. This treaty included the provision that post connections between the two countries should be arranged reciprocally and equally. Sweden's need for a post connection via Pomerania had become even



more important after the loss of the right for its own postal conveyance through Denmark in 1814.

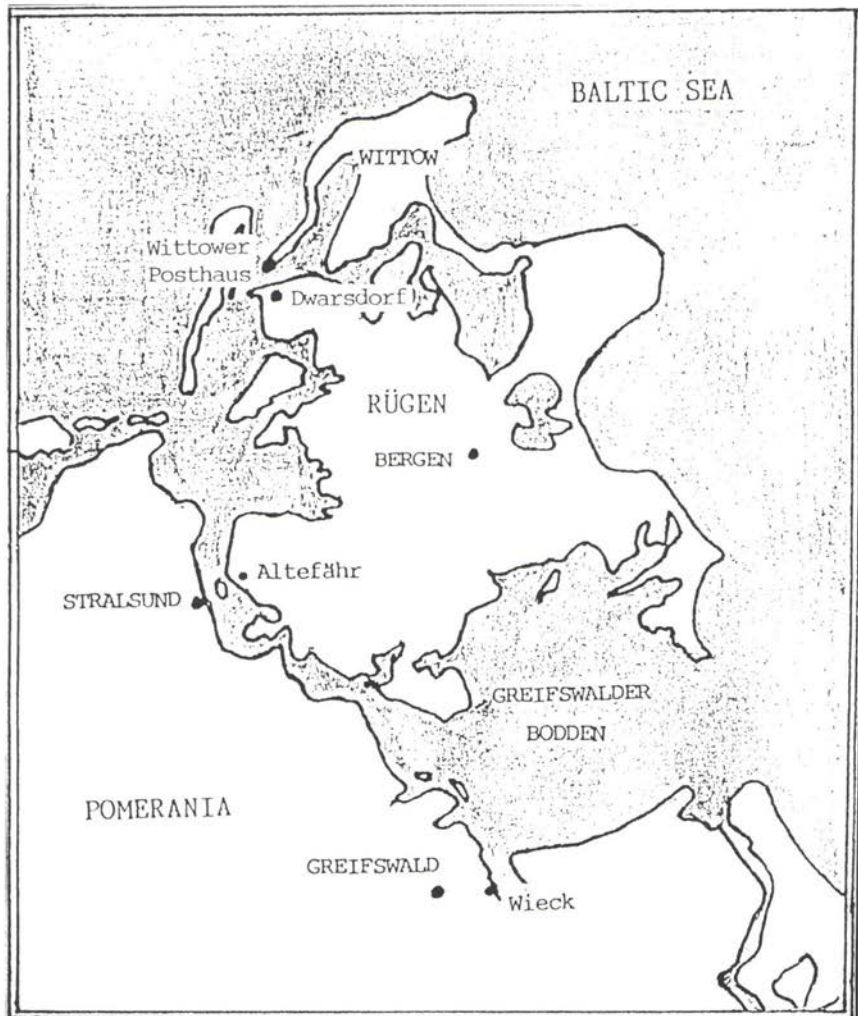
The Swedish-Prussian post via Pomerania is another interesting chapter in Swedish postal history.

[Ed. Note— the author is able to show covers addressed to or through these Swedish territories. Those who collect Swedish postal history should be aware of the Swedish post in Pomerania and add to their collections such items as, for example, a cover

from Lübeck to Stralsund from the appropriate period.]

#### References

1. Lange, Dieter, *Postgeschichte der Stadt Stralsund bis 1945*, p. 18 Ostsee-Druk, Rostock, 1987.
2. Löhrich, Wolfgang, "Poststämplarna som Svenska Postkommissarier använde under den andra Stralsund-Perioden," *Sällskapet för Svensk Posthistorisk Dokumentation, Aktuellt om Posthistorie*, Nr. 1 p. 45, 1986.



Map showing Swedish Pomerania and such important towns to the Swedish post as Stralsund and Wittow.

# New Book on Finnmark Postal History

Reviewed by Hal Vogel

*Posthistorie og poststempler fra Finnmark Fylke (Postal History and Postmarks of Finnmark District)* by John Erik Tegler (Oslo: Norsk Filatelistforbund, 1994), 321 pp., illus., in Norwegian. US distributor Jay Smith, PO Box 650, Snow Camp, NC 27349. HB \$110, SB 88.00 (postpaid).

This might be the first comprehensive coverage of the postal experience of Norway's most northern Arctic district. It certainly is the most thorough. No doubt it will become the *de riguer* reference for anyone even remotely interested in Arctic postal material that touches on Finnmark.

We say "touches" on this area because Tegler does not stop with a traditional study of the area's postal system and its postal cancellations. Indeed, it may be the tangential spheres that enhance this volume's value.

There's a short informative chapter on pictorial cancellations; including first flight slogan strikes. This is followed by a suitably lengthy treatment of ship mail. Among the extremely detailed data is an interesting page especially pertinent to those with a polar bent. Most of page 234 is devoted to a steamer named *Fram* in 1876. This obviously indicates a *second* vessel with this name that plied polar waters well before the one built by Colin Archer for Nansen and used later by Sverdrup and Amundsen as an expedition ship.

The nice sub-study of Tana Fjord's traveling post office route and the vessels that hosted it, gives one a clear example of this researcher's exacting thoroughness. There is shown a mute killer (with only concentric rings and a number) that precedes routes established in 1899. Otherwise indistinguishable, Tegler is able to associate it with "Tanaruten."

Those interested in Feldposts from this region from World War II will find this ready reference extends back in

time to 1904! The pre-WWI period has enough from this area for a mini-exhibit of just that topic. Military markings are brought up to nearly 1960.

Tegler wisely devotes a separate chapter to postmarks of the pre-occupation period (Spring, 1940) to the end of German administration at the close of WWII. Occupation unit post offices are given along with Norwegian civilian and military regular and provisional markings. A rarely noted but significant battle involving northeastern portions of Finnmark, as the Russians pushed the last German troops from Soviet territory in October 1944, is given several pages along with its adjacent postal history implications.

Among the final chapters is coverage of intriguing mail and markings that evolved from traveling post offices on lines into Russia.

It is difficult to imagine anything that a philatelist with this interest would be left wanting. It is written in Norwegian, but the illustrations, careful printing and clear section headings alleviate most language difficulties that a non-Norwegian reader would have. I was able to understand and use this reference without a fluency in Norwegian. It would have been nicer, however, if at least a rough translation into English of some of the lengthier history and background passages were provided.

One might quibble at the publisher's pricing, but this is tempered by the fact that this will be a stable publication with longevity. It also blankets the subject without the need for many supplemental references.

Polar postal historians might wish areas down to the Arctic Circle were included. However, we can't fault the parameters he chose to research. Indeed, *Posthistorie og poststempler fra Finnmark Fylke* probably will be recognized as *the* reference for this subject.

## SCC Annual, Regional & International Meeting Schedule

	Annual Meeting	Regional Meeting	Intern'l Meeting
1995	<b>PHILATELIC SHOW</b> Boxborough, MA April 28-30	<b>APS STaMpsHOW</b> St. Louis, MO August 24-27	<b>FINLANDIA '95</b> Helsinki, Finland May 10-15
1996	<b>ROMPEX</b> Denver, CO Mid May	<b>APS STaMpsHOW</b> San Diego, CA August 22-25	<b>CAPEX '96</b> Toronto, Canada June 8-16
1997	<b>VAPEX</b> Va. Beach, VA Mid November	<b>APS STaMpsHOW</b> Milwaukee, WI August 21-24	<b>PACIFICA '97</b> San Francisco, CA May 29 - June 8
1998	<b>CHICAGOPEX</b> Late October	<b>APS STaMpsHOW</b> Late August	
1999	<b>Invitation</b> Received	<b>APS STaMpsHOW</b> Late August	
2000	<b>WINNIPEG, MB</b> Early July	<b>APS STaMpsHOW</b>	

### DO YOU COLLECT SCANDINAVIAN STAMPS & POSTAL HISTORY? ARE YOU A SPECIALIST?

#### WHAT IS A SCHIFF "ESPECIALLY FOR SPECIALISTS"® AUCTION?

It's an auction designed with YOU in mind. Whether you are a buyer or a seller — each specialized area of collectin is listed in a separate section, making it easier for BUYERS to locate lots of particular interest and for SELLERS to realize maximum exposure for their material.



	N. America	Overseas
CATALOGS .....	Address	Address
1 Year with Prices Realised .....	10.00	18.00
1 year Catalogs only .....	7.50	15.00
1 Catalog with realizations .....	1.50	2.50
1 Catalog Only .....	1.00	2.00

We invite you to consign individual stamps or covers, entire collections or estates — for unreserved Public Auction or Private Treaty Sale. WE ALSO PURCHASE OUT-RIGHT! Contact us first describing your material include your address and telephone numbers.

## Jacques C. Schiff Jr., Inc.



195 MAIN STREET  
RIDGEFIELD PARK, NJ, USA 07660  
Phones (201) 641-5566 — From N.Y.C. 662-2777  
Licensed & Bonded Auctioneers — Established 1947





## *Stjernestempler* The Danish Star Cancels

*Stjernestempler.* Jan Bendix. Skilling 1995. 152 pp. Softbound. Available from Lizabeth Stamp Company and others.

Finally it is here — the long expected catalog of Danish postmarks from the small letter collecting places (Brevsamlingssteder [BRS]). These are the so-called star cancels. For a long time these postmarks have been very popular, giving rise to extremely comprehensive collections such as the late Flemming Hasle's large and rare collection.

Jan Bendix and some of the foremost Danish experts on postmarks and postal history reworked this popular collecting area during recent years. Numerous large collections both in Denmark and abroad were studied. Also all auction catalogs from the last 12 years were studied. The result is a new and different postmark catalog.

It is obvious that Jan Bendix and company have put an awful lot of time and effort in the catalog: in the preface Jan thanks the wives of his philatelic co-workers for their infinite patience and indulgence in the last phases of preparing the catalog.

The new catalog is both for the postmark collector and for those who collect the postal history of their home region. The postmarks are arranged alphabetically with indication of which side postmarks are known in natural connection with the BRS marking. It appears that a great deal of the BRS did not normally exchange mail with the post office under which they belonged administratively. Instead the mail was delivered to railway bureaus (MPOs) or to a post office with its own address. The important thing at that time was to get the mail off as fast as possible (!!!). There are so many new angles of inci-

dence to the continued collection of these special postmarks.

In the catalog after the postmark inscription follow the type and known period in which the mark was current. The periods indicated in earlier catalogs are often wrong. Research has shown that many times the BRS first got their postmark assigned several years after the station was opened. The dates contained in this catalog are therefore correct. Many collectors took part in putting them together.

This is, by the way, the first catalog to also indicate prices on whole pieces of mail in addition to the price on piece or stamp. It is a modern catalog which gives a multiple with which the price of the imprint should be raised if on a cover. It appears that even the common postmarks may be difficult to find on cover. Some of the small stations in fact only postmarked qualified mail (registered letters, address cards, etc.). The first postmark in the catalog, Aabenraa 1 is priced at 5 DKK for a small piece whereas the postmark on cover is priced at 250 DKK of 50 times as much. The postmark Aabyhøj is 25 DKK on piece but only 100 DKK on cover.

The price assessment is made by experts who closely followed the market during the last decades and they are based on rarity and availability. Some selected prices from auctions of the last ten years are shown in the back of the book just before the references. The highest price is a "Ruth" that obtained 37,000 DKK in Thomas Højland's 1992 auction. The catalog is in Danish but is easy to use and completely necessary for every collector of these interesting postmarks. We recommend this catalog as the very best.

— D. L.

# The Scandinavian Collectors Club

—*Founded, Nov. 25, 1935*—

## Elected Officers

- PRESIDENT: Paul A. Nelson, PO Box 310, Claremont, CA 91711  
 VICE PRESIDENT: Dr. Warren Pearse, 350 South River Landing Rd, Edgewater, MD 21037  
 VICE PRES. FOR CHAPT.: Reino Merikallio, 388 West Road, New Canaan, CT 06840  
 SECRETARY: Jared Richter, 1353 Plum St., San Diego, CA 92106-2549  
 TREASURER: Howard Schloss, 261 Congressional LN #705, Rockville, MD 20852  
 FOUR YEAR DIRECTORS: Glenn Hansen, 113-211 Watson St, Winnepeg, MB, Canada R2P 2E1  
 Anders Melberg, 9123 Stevenson #1F, Des Plaines, IL 60016  
 Robert Paulson, 1179 Pine Ridge Cir. W. #A1, Tarpon FL 34689  
 TWO YEAR DIRECTORS: David Anderson, 33780 Feldspar St. NW, Princeton, MN 55371  
 Roger Quinby, PO Box 12606, Albany, NY 12212  
 Wayne Rindone, PO Box 276, Newtonville, MA 02160-0276  
 IMMEDIATE PAST PRES.: Dr, Roger G. Schnell, 4800 NE 20th Ter, Fort Lauderdale, FL 33308

## Appointed Officers

- EXECUTIVE SECRETARY: Robert W. Lang, P.O. Box 125, Newark, DE 19715-0125  
 HISTORIAN: Dr. Richard Collins St. Clair, PO Box 606, Cambridge, MA 02140-005  
 LIBRARIAN: Dr. W. E. Melberg, Box 134, Allenton, WI 53002  
 STAMP MART MANAGER: Eric Roberts, P.O. Box 460201 Galleria Sta., Houston, TX 77056  
 APS REPRESENTATIVE: Jared H. Richter, 1353 Plum St., San Diego, CA 92106-2549  
 PUBLICITY CHAIRMAN: Marvin D. Hunewell, P.O. Box 23959, St. Louis, MO 63119  
 BY-LAWS CHAIRMAN: Chris McGregor, 6312 Carnarvon St., Vancouver, BC Canada V6N 1K3  
 AWARDS CHAIRMAN: Ron Collin, PO Box 63, River Grove, IL 60171  
 LITERATURE PROMOTION: Alan Warren, P.O. Box 17124, Philadelphia, PA 19105  
 EXHIBITION COORDIN.: Dr. Jeffrey N. Crown, 850 Flagler, Dr., Gaithersburg, MD 20878-1946  
 COMPUTER COORDIN.: Paul Helgesen 34 Plymouth Road, White Plains, NY 10603-1129

## Member Services Coordinators

## Staff, *The Posthorn*

- POSTHORN EDITOR: John Lindholm, 2316 Lakeview Dr., Fergus Falls, MN 56537  
 BUSINESS MANAGER: E. A. Menninger, PO Box 457, Lillington, NC 27546  
 NATION EDITORS & RESIDENT ASSOCIATE EDITORS  
 POSTHORN COLUMNIST: Alan Warren, P.O. Box 17124, Phila., PA 19105  
 CHAPTER NEWS EDITOR: Reino Merikallio, 388 West Road, New Canaan, CT 06840  
 D.W.I. EDITOR: Dr. Roger G. Schnell, 4800 N.E. 20th Terrace, Ft. Lauderdale, FL 33308  
 DENMARK & FAROES  
 & GREENLAND EDITOR: Dr. Dan Laursen, 4901 East Eastland, Tucson, AZ 85711  
 RESIDENT ASSOC.: Ingolf Nielsen, Reynstún 9, FR 160 Argir, The Faroes  
 FINLAND EDITOR: Mike E. Hvidonov, 4 Dwight Lane, Great Neck, L.I., NY 11024  
 ICELAND EDITOR: Bryan R.R. Whipple, 3095 Jaylee Dr., Santa Rosa, CA 95404  
 RESIDENT ASSOC.: Sigurdur H. Thorsteinsson, P.O. Box 26, IS-222, Hafnarfirdi, Iceland  
 NORWAY EDITOR: Roe C. Blume, 10 Chestnut St., Wilmington, DE 19810  
 RESIDENT ASSOC.: Paul H. Jensen, Postboks 115 Kalbakken, N-0902 Oslo, Norway  
 SWEDEN EDITOR: Paul A. Bergman, 875 Kenoza St., Haverhill, MA 01830

## SCC Study Groups

- DWI STUDY UNIT Dr. Roger G. Schnell, Chairman (see address above)  
 REVENUES: Tim McRee, Box 388, Claremont, NC 28610  
 SWEDEN - RING TYPE  
 STAMPS: George A. Kuhhorn, P.O. Box 4486, Emerald Isle, NC 28594

## News From the Home Office

### by Bob Lang

We welcome two new and five previous members. Taps sounded for two and one resignation giving us a net increase of four. The alarming statistic is that there are nearly 100 members who have not paid their dues for 1995. Part of that is my fault because the dues renewal envelope was misleading about who needed to pay and who was paid up. I apologize! If the label on your Posthorn Envelope says "1994," that means this Posthorn is your last unless I hear from you by June 30.

Sorry, we simply can't afford to carry so many members any longer than that. Hopefully, it's just an oversight. If so, **Please send in your \$15 or \$21 (overseas members) AS SOON AS POSSIBLE!** Many thanks!

Canadian members should be dealing with Glenn Hansen concerning dues renewals and anything to do with membership. Keep Glenn up-to-date on your SCC doings: 113-211 Watson St., Winnipeg, MB Canada R2P 2E1.

I want to express my appreciation to those who worked long and hard to make our meetings in Boxborough and Helsinki so gratifying to our Scandinavian collectors. HIP HIP HOORAY to the workers!

And my congratulations go out to our award recipients:

Earl Grant Jacobsen Awards to: Frederick A. Brofos and Michael E. Hvidonov

Honorary SCC Membership to: Eugene G. Lesney

Half Century Club: Burt Browner (0383) and Norman W. Welo (0336)

Quarter Century Club Inductees:

Carl Davenport	1536	T. George Gilinsky	0850
----------------	------	--------------------	------

W. Joseph Harris	1516	Barry D. Ives	1519
------------------	------	---------------	------

Paul H. Jensen	1542	Robert H. Jensen	1497
----------------	------	------------------	------

Charles W. Nye	1513	Allan Sess	1493
----------------	------	------------	------

George W. Sickels	1514	Jeffrey C. Stone	1521
-------------------	------	------------------	------

For those who couldn't attend our national show, why not plan to take in the SCC Regional Meeting which will be held this August in St. Louis, MO in conjunction with the APS Stampshow. You'll be glad you did! Marvin Hunewell has an invitation elsewhere in this issue.

### Who to Contact?

<ul style="list-style-type: none"> <li>To become a member of SCC</li> <li>To pay dues</li> <li>To change address</li> </ul>	<ul style="list-style-type: none"> <li>Executive Secretary</li> </ul>
<ul style="list-style-type: none"> <li>To place ads, make payments or rate inquiries</li> </ul>	<ul style="list-style-type: none"> <li>Business Manager</li> </ul>
<ul style="list-style-type: none"> <li>To submit articles or ideas</li> <li style="padding-left: 20px;">General articles</li> <li style="padding-left: 20px;">Individual country articles</li> </ul>	<ul style="list-style-type: none"> <li>Editor, <i>The Posthorn</i></li> <li>Nation Editors</li> </ul>
<ul style="list-style-type: none"> <li>To form a new chapter</li> <li>To get help for exhibiting</li> <li>To get help using computers</li> </ul>	<ul style="list-style-type: none"> <li>Chapter Coordinator</li> <li>Exhibition Coordinator</li> <li>Computer Coordinator</li> </ul>





# Library News

Dr. W. E. Melberg, SCC Librarian

LIBRARY NEWS MAY 1995

The highlights of this quarter are the acquisition of the latest auction catalogs of the Thomas Høiland Group and their newest publication: *A KE SPECIALKATALOG* of Danish Star cancels. This is the latest publication of this specialty that replaces the great Kirsten Ehlers' books. Here's your chance to learn something about Denmark and its Philately. Subscribe to this auction firm:

Thomas Høiland Frimærkeauktioner A/S  
 Gl. Kongevej 80  
 DK-1850 Frederiksberg  
 DENMARK

**Library Donations - December 16, 1994 to March 30, 1995.**

**Cash:**

David Bennett, Tom Bergendahl, Donald Brent, Raymond Broms, Robert Hamerschlag, Ove Hellsten, Roger Kirst, Roger Quinby, Eric Roberts and Jay Smith

**Publications:**

**Russell Anderson**

*SPECIAL KATALOG 1981-82. Danmark, Færøerne, Grønland and Dansk Vestindien.* Lars Boes. 448pp.

**Brønshøj Museum**

*BRØNSHØJ. HUSUM-UTTERSLEV-EMDRUPS POSTHISTORIE.* Asger Fog. 1994. 48pp. Postal history of this area in Denmark.

**Chapter 13**

*DANISH KINGS.* Slide presentation (36) prepared by Chapter 13. Manville Bro is the author and Robert Lipscomb the photographer.

*THE PRIVATE LOCAL POSTS OF DENMARK.* Slide presentation (36) prepared by Chapter 13. Manville Bro is the author with additional help from Howard Schloss. The photographer is Robert Lipscomb.

**Dalum Apotek**

*DANISH CHRISTMAS SEALS.* Collection of three prescription envelopes with seals on each. Used by the donating pharmacy, Dalum Apotek, in 1992, 93 & 94.

**FG Nordische Staaten E.V.**

*DE DANSKE JERNBANEBUREAUER OG DERES STEMLER - DEL 1 - ØERNE.* S. Hovard. 250pp. This book deals with the Danish Railway Postal system on the islands of the country. Routes are depicted and the various cancels are listed along with periods of usage.

**Föreningen Postmusei vänner**

*POSTRYTTAREN - 1994 POSTMUSEI ÅRSBOK.* E. Hamberg. 1994. 152pp. Many articles about Scandinavian Philately.

**Alfred Gruber**

*QUEEN CHRISTINA OF SWEDEN 1632-1689. PRESENTED BY THE METRO-*

*POLITAN MUSEUM OF ART.* A PBS Video (55 Minutes).

**Mike Hvidonov and his Finnish Cohorts**

*NORMA - 1994/95.* Tapio Ylismaa. 290pp. The latest Finnish Philatelic Catalog.

**Thomas Høiland**

*KE SPECIALKATALOG 1995 - BREVSAMLINGSSTEMPLER - STJERNESTEMPLER - UDSLEBNE - ESRØM - TAARBÆK-TYPER* T. Høiland. 1995. 80pp. New book of Star Cancels Etc.  
*INVESTERINGSKONSORTIUM II I FRIMÅRKEN.* Privat Placering ab. 1995. 24pp. A book listing rare items, with many great colored illustrations. This an investment group that you can buy into.

**Arthur Lind & Carl Probst**

*MEDIEVAL SCANDINAVIA - FROM CONVERSION TO REFORMATION - circa 800-1500.* Birgit & Peter Sawyer. 1993. 266pp.  
*DENMARK.* A Video about this country. 52 min.  
*FINLAND.* A Video about this country. 50 min.  
*NORWAY.* A Video about this country. 55 min.  
*SWEDEN.* A Video about this country. 53 min.

**W.E. Melberg**

*LOCOMOTIVES OF THE PRIVATE RAILWAYS OF DENMARK.* W. Bay. 1959. 104pp. Xeroxed. Drawings and measurements of these engines.  
*DANISH TOWN & CITY CENSOR FIGURES. 1769-1890.* 30pp.

**Jens Nyboe**

*DEN GAMLE BY I AARHUS. FRA BORGMESTER TIL KØBSTADMUSEUM. 1909-1945.* Peter Holm. 1951. 276pp. A listing and description of the buildings that have been moved and reconstructed in the old section of Aarhus.

**Carl Probst**

*AN INTRODUCTION TO SCANDINAVIAN LITERATURE FROM THE EARLIEST TIME TO OUR DAY.* E. Bredsdorff, B. Mortensen & R. Popperwell. 1950. 245pp.  
*HISTORY OF THE LITERATURE OF THE SCANDINAVIAN NORTH FROM THE MOST ANCIENT TIMES TO THE PRESENT.* F. Horn. 1901. 507pp.  
*DENMARK IN WORLD HISTORY - The external History of Denmark from the Stone Age to the Middle Ages with special reference to the Danish influence on the English-speaking nations.* Viggo Starke. 1962. 381pp.  
*QUEEN CHRISTANA.* G. Masson. 1968. 406pp. Book about this Swedish Queen. A fascinating history of this period.

**S. Serebrakian, Inc.**

*ICELAND - UNIQUE AND UNUSUAL VIKINGS.* 32pp. Photocopies of collection of "1000 years of Icelandic Parliament set & Airmail C-3 Eagle."

**S. Thorsteinsson**

*BÆJATALI A ISLANDI ASAMT POSTNUMERASKRA 1993.* Post and Telecommunications Adm. 128pp. Postal Directory (ZIP Code) with place names of Iceland.  
*OVERENSKOMST OM POSTFORBINDELSE MELLEM DANMARK OG ISLAND.* P. & T. 1919. 28pp. Rules and regulations concerning postal service between Denmark & Iceland.  
*POSTTOFNUN A ISLANDI 175 ARA - 1776-13 MAI-1951.* Icelandic portion of ICE B 38 E.  
*SKYRSLA UM POSTTREKSTUR A ISLANDI - 1906-1926.* Duplicate.

**Dr. S. Turunen**

*ABOPHIL.* Complete set of the 1994 Finnish Philatelic Journal.

**Alan Warren**

*GREENLAND: ISLAND OF THE ARCTIC.* Gerhard Müller. 1994. 76pp. Greenland exhibit.

*SYMBOLER FÖR POSTEN*. Bo Andersson. 30pp. Story about the Swedish Post Office's *POSTHORN* symbol.

**Purchased:**

*FINLAND: THE COLOR AND PRINTING IDENTIFICATION OF THE 1875 ISSUES - A NEW APPROACH - VOLUME I* - 108 pp. - *VOLUME II - TABLES* - 450 pp. Herbert Oesch. 1994. Translated by K. Aro. At special Library rate from Scandinavian Philatelic Foundation.

*HANDBOOK OF THEMATIC PHILATELY*. W.E.J van den Bold. 1994. 215pp. A new "Bible" of this specialty.

*POST I FREDERICIA 1673-1995*. Many authors. 1994. 109pp. History of the Post Office in Fredericia on Jutland.

*STJERNESTEMPLER - KATALOG OVER BREVSAMLINGSSTEDERNES STEMLER. ESROM-TYPE - STJERNE I - STJERNE II - UDSLEBNE*. Jan Bendix. 1995. 152pp. Lists earliest and last dates. Gives value of cancel on stamp and also on letter. The author emphasizes that auction realizations don't always reflect the true value.

*NORWAY NUMBER ONE - THE NEW HANDBOOK*. Tore Gjelsvik. 1994. The New "Bible" of this stamp. A great book with new information.



# 1995 Facit

## \$38.95 Net Cost \$28.95\*

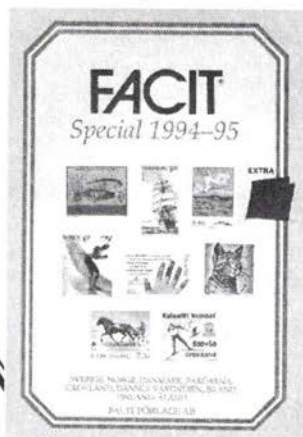
\*The \$38.95 catalog comes with our bonus \$10 coupon toward a minimum \$50 new purchase from one approval selection from your want list.

- Free Sweden Maps Booklet
- Complete English/Swedish text
- Call toll-free with VISA or MasterCard
- U.S. Orders \$38.95 Postpaid (book rate)
- Foreign orders add \$3.00 for surface mail. Airmail is extra.

To order call **1-800-447-8267** or  
1-910-376-9991 Fax 1-910-376-6750

North American Distributor:

**Jay Smith & Associates**  
P.O. Box 650-615  
Snow Camp, NC 27349



### Three Volume "DWI Mails" is being updated

If you have an early postmark, specific suggestions on expanding the books, etc., contact Dr. Roger G. Schnell, 4800 NE 20th Terrace, Ft. Lauderdale, FL 33308, USA or Jay Smith.



# Scandinavian Stamp Mart

**Eric Roberts**

**PO Box 460201  
Houston, TX 77056**

Sales in the Mart have been very brisk, except for the new type "G" pocket Mart books. Agreeably the selection has been a little narrow. Following is a listing of all the type "G" Mart books available with remaining value. These books are available to all members, but we especially encourage our Canadian and overseas members to participate.

Book Number	Contents	Entry Value	Remaining Value
G1001	Denmark booklets	\$1802.50	1632.50
G1002	Denmark stationery	687.50	637.50
G1003	Sweden booklets	1142.50	1017.50
G1004	Norway #1	840.00	820.00
G1005	Norway #1	1150.00	1020.00
G1006	Norway #1	938.00	558.00
G1007	Norway #1	727.00	727.00
G1008	Finland stationery	1278.00	1183.50
G1009	DWI stamps	496.00	416.00
G1010	Norway stamps, covers	1400.00	875.00
G1011	Iceland stamps	975.00	760.00
G1012	Sweden stamps	651.50	622.00
G1013	Norway stamps	1145.00	1145.00
G1014	Faroe covers	273.75	273.75
G1015	Faroe revenues	213.75	0.00

All material to be sold through the Mart must be mounted in special sales books which are available from the Mart Manager. Currently there are three types available.

**Type C:** 20 page, 500 space beige cover book available at \$0.45 each plus postage. Postage would be \$1.05 for up to five books. For stamps and covers having a total net value of between \$35 and \$650.

**Type F:** 16 page, 192 space blue cover book available at a cost of \$5 for 10 books postpaid. For stamps and covers having a total net value of between \$35 and \$650.

**Type G:** 15 page, 15 pocket book available at \$3 for four books postpaid. For stamps and covers having a minimum net value of \$10 each item or set and \$200 per book with a maximum net value of \$5000 per book.

### We Need

We need all types of Scandinavian material. We especially need Iceland. We also need used postal stationery, locals, and booklets of all of Scandinavia. Covers always sell well and the Mart has an insatiable demand for unusual cancels, especially Iceland and Denmark. Address above. Telephone 713-963-0485 evenings or 713-575-5255 days.

*Support Our Advertisers*

## SCC Chapters — Meeting Times/Places and Contact Address

4. CHICAGO: 4th Thursday (except July and August) at Golden Flame, 6417 W Higgins.  
MAIL ADDRESS: Anders Melberg, 9123 Stevenson Dr, Des Plaines, IL 60016

5. NEW ENGLAND: First Wednesday at The Swedish Home, 206 Waltham St, West  
Newton, MA at 7:30 in the Board Room.. MAILING ADDRESS: Wayne Rindone, PO Box  
276, Newtonville, MA 02160

7. NEW YORK: 2nd Wednesday (except July and August) at The Collectors Club, 26 E  
35th St. MAILING ADDRESS: George Ganim Jr, c/o Sydney & Ganim, 122 E 42 St, NY,  
NY 10168

9. NORTHERN NEW JERSEY: 3rd Wednesday at members' homes. MAILING AD-  
DRESS: Warren J. Grosjean, 32 Juniper Rd, Wayne, NJ 07470

12. WASHINGTON, DC: Meets at major stamp shows throughout year. MAILING  
ADDRESS: Dr. Jeffrey Crown, 850 Flagler Dr, Gaithersburg, MD 20878

13. DELAWARE: Last Tuesday at members' homes. MAILING ADDRESS: Robert D.  
Lipscomb, PO Box 59, Rockland, DE 19732

14. TWIN CITIES: 2nd Thursday (except July and August) at Lynnhurst Community  
Center 50th St. and West Minihaha Parkway, Minneapolis. ADDRESS: Ross Olson, PO Box  
23377, Richfield, MN 55423

15. ROCHESTER: 1st Monday at Robert Gustafson's home. MAILING ADDRESS:  
Robert Gustafson, 877 Helendale Rd, Rochester, NY 14609

17. SOUTHERN CALIFORNIA: 1st Wednesday at Union Federal Bldg, 13300 Ventura  
Blvd, Sherman Oaks. ADDRESS: Paul Nelson, PO Box 310, Claremont, CA 91711

21. GOLDEN GATE: Meets at major stamp shows throughout year. MAILING AD-  
DRESS: Thomas Olson, 4 Woodmont Court, Berkeley, CA 94708

22. HOUSTON: 1st Tuesday evening of even numbered months at law office of George  
Sellnau; varying Sunday afternoons of odd numbered months at stamp dealer shop of Mary  
Jane Menzel. MAILING ADDRESS: Eric Roberts, PO Box 460201, Houston, TX 77056

23. WEST COAST: 3rd Monday, 6:00 PM at "Kissin Cousins" restaurant, on US 19  
North, Clearwater. ADDRESS: Robert Paulson, 1179 Pine Ridge Cir. W. #A1; Tarpon  
Springs, FL 34689

24. WINNIPEG: 2nd and 4th Wednesdays at Scandinavian Cultural Centre, 764 Erin  
Street. ADDRESS: Glenn Hansen, 113-211 Watson St., Winnipeg, MB R2P 2E1

25. TUCSON: 4th Tuesday (except July and August) at members' homes. MAILING  
ADDRESS: Jack F. Schmidt, 805 W. Hermosa Pl, Green Valley, AZ 85614

26. TIDEWATER: Meets at stamp shows and members' homes throughout the year.  
MAILING ADDRESS: Michael Falls, 575 Virginian Drive, Norfolk VA 23505-4242

**Chapter Coordinator:** Reino Merikallio, 388 West Rd, New Canaan, CT 06840

\* S \* C \* C \*

### Look Out, Sweden Post!

The April 16 *Svenska Dagbladet* featured a huge Tom and Jerry cartoon with Jerry smugly tripping postman Tom. Jerry is the mascot for a new post operator on the Swedish scene, competing with Sweden Post for the addressed direct mail advertising market — SDR Svensk Direktreklam. Jerry trips up the big bad Tom and, at the bottom of the page, runs off smiling with some mail to deliver. SDR Svensk Direktreklam emphasizes that they can distribute printed matter much cheaper than the Post. But what merits mention here is the final dig in the ad: If the Post gets fewer advertisement mail pieces to deliver, maybe letters will come quicker?

**Membership Statistics for the First Quarter Ending March 31, 1995**

**New Members**

- 3555 HEADLEY, RONALD C. (Address Restricted), Grand Island NY 14072  
Slania Engraved, France, Selected Animals
- 3556 RADLEY, COL. K. J., 16 Forbes Avenue, Kanata, Ontario, Canada K2L  
2L8  
Scandinavia

**Reinstated Members**

- 2780 HANSEN, J. P. HART, Vibevej 4C, DK-2990 Niva, Denmark.
- 0850 GILINKSY, T. GEORGE, P.O. Box 8785, Scottsdale AZ 85252-8785
- 1592 DONEGAN, GEORGE J. JR., P.O. Box 28054, Washington, DC 20038-8054
- 3123 ANDERSON, KENNETH R., 541 Sycamore Drive, Elk Grove Village, IL 60007
- 2646 SWASEY, CHARLES D., 311 Holly Hill Road, Enterprise, AL 36330

**Resigned**

- 3357 BJORKLUND, MIKE - Member since 1991

**Deceased**

- 2240 WATERS, RUPERTA S. - Member since 1979
- 2425 HLIFKA, WILLIAM J. - Member since 1992

**Contributions**

Col. Benjamin Hague, Paul Oberlin, John Schaad, Thomas Shuck, Jay Smith, Lawrence Jones, John van Lund, John Wilhelm

**Change of Address**

- 3174 BIRKINBINE II, JOHN, P.O. Box 36657, Tucson, AZ 85740
- 3397 SPOERL, STEVE, P.O. Box 748, Madison, WI 53701
- 3276 COLLIN, BENT, P.O. Box 1945, Alamogordo, NM 88311
- 3311 NADLER, STEPHEN D., 3701 S. Sante Fe Drive, Sheridan, CO 80110
- 3403 YOUNG, THERESA L., 7054 Woods West Drive, Flushing, MI 48433
- L-35 FROMER, MARK, 1325 E. 17th Street, Brooklyn, NY 11230
- 1493 SASS, ALLAN, 538 W. Stevens Road, Palm Springs, CA 92262
- 3326 CARLTON, R. SCOTT, 1659 Oregon Avenue, Steubenville, OH 43952
- L-78 JARDINE, NEAL J., P.O. Box 571267, Tazana, CA 91357
- 3491 SUNDERLAGE, SEAN A., 1213 Surrey Court Apt. 2, Godfrey, IL 62035
- 2686 SARGENT JR, CHARLES S., 407 Loyd Road, Peachtree City, GA 30269
- 3433 WILLIAMS, ANDREW M., 15525 County Road 108, Bristol, IN 46507
- 3227 GLASØ, KNUT, Nordre Hallset vei 81A, N-7023 Trondheim, Norway
- 3090 MCGINNIS, JAMES G., 175 W. North St., #405, Moravian Hall Sq, Nazareth, PA 1806
- 2964 REES, CHARLOTTE, 4666 Coralwood Circle, Carlsbad, CA 92008
- 1597 JESSEN, GUNNAR P., 14 St. Barnabas Dr., Swanland, North Ferriby, England HU14 3RL
- 3420 TERAMO, KARI A., Lansanportti 10 A 4, FIN-02630 Espoo, Finland

<b>Current Total Paid</b> .....	<b>952</b>	<b>Total Paid Last Report</b> .....	<b>948</b>
Honorary .....	8	Changes .....	1Q95
Life .....	62	New Members .....	+2
Regular .....	877	New Life/Honorary .....	0
Subscriptions .....	5	Reinstated .....	+4
		Adjustments .....	0
<b>Total Paid</b> .....	<b>952</b>	Regular to Life/Honorary .....	0
		Resignations .....	-1
Courtesy & Exchange .....	33	Deceased .....	-2
SCC Staff & Library .....	70	Members Dropped .....	0
<b>Total PH Copies</b> .....	<b>1055</b>	<b>Total Change</b> .....	<b>+4</b>



# ICELAND SWEDEN

**LARGE  
STOCK  
including  
the . . .  
RARITIES**

*Send for my  
FREE  
PRICE LIST!*

**KARL A. NORSTEN**  
Box 907, S-181 09  
Lidingo, Sweden  
Fax 011-46-8-731-0244

## Specialized Scandinavia

For twenty-five years we've been helping to build collections through our monthly lists of Scandinavian specialty material: covers, booklets, locals, stationery, seals, literature, and sometimes even ordinary stamps. If you're looking for the unusual, at pleasingly reasonable prices, we could be your source. Let us hear from you, because you'll enjoy our lists (we're told they make interesting reading) and may find some items you need.

**Boom Denmark Booklets Catalog** (new edition) \$33.95  
**Denmark Star Cancels Catalog** (new, by *Skilling*): \$28.50  
**Sweden 1994 Test Booklet** (Europa stamp motifs): \$8.25

\*\*\*\*\*

We also have in stock the 1994 Sweden Tourist Booklets, with stamps valid only on mail from the Canary Islands

**Lizabeth Stamp Company**

P.O. Box 321

Bloomsburg, PA 17815

# Membership Exchange

If you are looking for pen pals, stamp exchanges, obscure information, or a way to sell extra material we will print FREE MEMBER-TO-MEMBER "ADS" on a "space available" basis with minor editing as necessary. Try to be brief — 40 words or less is best, SCC and the *Posthorn* cannot be held responsible for stamp exchanges. Use good judgment.

Submit requests to the Editor. (Dealer members will not be eligible for gratis ads, but can purchase M-T-M space at the rate of 20 words for \$2. (minimum) plus 10¢ per additional word. Contact our Business Manager listed on the Contents Page.)

**Wanted by Researcher:** Iceland *I Gildi* errors/varieties, listed or not, sheets with or w/o varieties, quantities. Send photocopies with your price or for my offer. E. Glatt, Box 2080, Ventura, CA 93002-2080 (1808-2)

\* S \* C \* C \*

**Norway Yearsets** for Sale: 1977-93 complete, VF as issued. Face \$220, price \$200 postpaid. Eric Roberts, PO Box 460201, Houston, TX 77056 (L53-2)

\* S \* C \* C \*

**Norway Yearbooks** for sale, 1988-93 complete, as new in original containers. \$260 postpaid. Eric Roberts, PO Box 460201, Houston, TX 77056 (L53-2)

\* S \* C \* C \*

**Sweden Collection 1855-1918**, used only, for sale. Mounted on blank Scott pages. Approx. value FACIT 350,000 SW Kr. Includes multiple copies of all skilling bco. values, 1858 coat-of-arms, lion, etc. For details write Ernesto Fink, Seutberg. 56/8, 1130 Vienna, Austria (144-2)

\* S \* C \* C \*

**Wanted: Finland Saarinen Issue**, Scott 83-110, 119-140, 143-154/FACIT 67-75,84-107, 109-122, 125-136, 140-146 (mint, used, multiples, sheets, on cover) in large or small quantities for study. Frank Baze, 7061 Yahley Mill Road, Richmond, VA 23231 (2935-2)

\* S \* C \* C \*

WANTED: Swedish Post Office **Information Bulletins, Nya Frimärken** cards, 1968-1983. K.J. Radley, 16 Forbes Ave, Kanata, Ontario; K2L 2L8; Canada (3556-1)

\* S \* C \* C \*

**Postal Stationery:** Have **Denmark for sale or trade**. Will exchange want lists. Could also use Fin & Nor. Robert Hamerschlag, 8940 Oakmont Dr., Santa Rosa, CA 95409 (1254-1)

\* S \* C \* C \*

Wanted: **Iceland Postal Stationery**, mint FACIT. Single 40, Double 10,21,23 used Double 9 with cert. Robert Frigstad, 2181 Lakeaires Blvd., White Bear Lake, MN 55110 (L25-1)

\* S \* C \* C \*

Wanted: **Norway** Postal stationery mint — Pihl 7,8,9,33,42,46,47,52 Robert Frigstad, 2181 Lakeaires Blvd., White Bear Lake, MN 55110 (L25-1)

\* S \* C \* C \*

Trying to complete **Posthorn**. Need Volume 13-23. Also Vol. 30, Nr. 2, 1073, and Vol. 43, Nr. 4, 1986. Sigurdur H. Thorsteinsson, PO Box 26, IS-222 Hafnarfirdi, ICELAND (L29-1)

\* S \* C \* C \*

Looking for US member to **exchange stamps** and information. **Wanted:** US mint/used. **Give:** Swedish mint/used. Mikael Bernhardsson, Mariaplan 4C, S-41471, Gothenburg, Sweden (3554-1)

\* S \* C \* C \*

**Non-members seeking American exchanges**

**TRADE:** I Give stamps on themes of **USSR and CIS, FDC, Polar covers**. I need mint stamps of USA, fauna. A. Goloskov, Zagrebski 7-1-353, 192284 St. Petersburg, Russia.

(2)

\* S \* C \* C \*

Sell or exchange Czechoslovak stamps, blocks, FDCs 1945-1992 and stamps Slovakia and Czech Republic to 1993. John Ivan, Sibirska 20, 080 09 Presov 9, Slovakia. English only

(1)

\* S \* C \* C \*

## Stanley Hanson

### RIP

When I first joined the SCC the most exciting thing about the club was that I could send off to the club library and get philatelic literature I didn't even know existed before then. Stanley Hanson was the librarian I wrote to.

Just a year later I moved close to Chicago and began attending chapter four meetings. There was Stanley, always, and I got to meet our librarian face to face. He encouraged me. His own interest was Norway — the posthorns, but also oddball things. What I remember is he had his own interests but he listened to the interests of others as well.

Stanley has not been the librarian for some time now. Nevertheless, I experience his death as a loss to the Scandinavian Collectors Club. J.L.

# SPECIALISED SCANDINAVIA

A new range of services from

## ACORN PHILATELIC AUCTIONS

1. Regular **POSTAL AUCTIONS** (4 sales per year) of around 250 lots ranging from £30 to £500.
2. A **"WANTS LIST"** Service catering for the needs of collectors from Beginners to Specialists.
3. **LITERATURE SEARCH.** We will occasionally be offering books for sale or will seek out more elusive items.

*Write now with details of your requirements to:*

### Acorn Philatelic Auctions

27 Pine Road, Didsbury, Manchester M20 6UZ

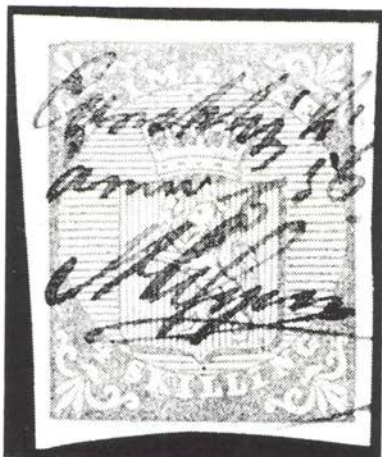
Tel: 061-434 2580 Fax: 061-877 8819





## AUCTIONS 1995-96

in Malmö



### THE NORDIA AUCTION

October 25-26



Official Exhibition Auction

With forceful international marketing.  
Featuring Eivind Evensen's Finland.

### PRE NORWEX AUCTION

March 22-23, 1996

International Auction in Malmö.

With "Two-room Auction" of Norway Special  
in cooperation with OFM, Oslo.

We feel sure that both events will be great philatelic feasts, and do hereby invite you to take part as consignors. Please contact us already today for a discussion about your material, an early consignment will allow us to include your material in our international pre-catalogue marketing.

## POSTILJONEN AB



Box 4118, S-203 12 Malmö, SWEDEN

Telephone Int. +46 40 72290

Fax Int. +46 40 72299

The auction house in Scandinavia



# THINKING OF SELLING?

## We Offer 3 Distinct Alternatives

**PUBLIC AUCTION** Through public floor auctions, your stamps reach the broadest possible audience in a positive selling environment. The price you realize will be determined by open market bidding, not private negotiation. Our illustrated auction catalogs and broad customer base insure that your stamps are attractively presented to active buyers in the United States and overseas.

*Ask about our new commission structure for sellers . . . now as low as 5% for larger properties.*

**PRIVATE TREATY** Specialized collections, in particular, must be presented in the proper way to other specialists in order to maximize the price realized. You set the price. We then inform selected customers of the property and endeavor to sell it within 90 days.

**IMMEDIATE CASH** We constantly buy and sell stamps in the normal course of our business and need to acquire collections as well as better stamps and covers from all Scandinavian countries. We provide frank evaluations and IMMEDIATE PAYMENT IN FULL for all acquired material regardless of size.

## Call Toll Free 1-800-950-0058

in NJ 1-201-746-7982

FAX 1-201-403-2601



# NORTHLAND CO.

BOX 34 • VERONA, NJ 07044

*Scandinavia Exclusively . . . Since 1975*

