



The

POSTHORN

FEBRUARY 1996

143-2



Iceland's First Airmail Issue

A New Look
See Page 3

Journal of the Scandinavian Collectors Club



Scandinavia

- Building fine collections for exhibition, research, and enjoyment. Offering approvals from your specific want list or a description of your specialized interests.
- Offering complete private treaty services for your Scandinavian material.
- Active buyer of complete collections or individual items. High prices paid; with immediate cash payment. Avoid the delays and uncertainty of auctions. I have many customers for your good material.
- Providing over 300 titles of philatelic literature and catalogs for the Scandinavian collector.

Call toll-free 1-800-44-STAMP (1-800-447-8267)

Phone: 910-376-9991 Fax: 910-376-6750

The Scandinavian Specialist since 1973

Jay Smith

P.O. Box 650-SCC Snow Camp, NC 27349



The
POSTHORN

Official Publication of the
SCANDINAVIAN COLLECTORS CLUB
Published Quarterly Since 1943
Copyright 1996 Scandinavian Collectors Club

Vol. 53, No. 1

February 1996

Whole No. 206

Table of Contents

Iceland's First Airmail Issue, by A. A. Gruber	3
More on Philately Under Fire (British FPO in Norway), by Hal Vogel	11
Foreign Usages of the 1911 Penni Issue, By Ed Fraser	15
An 1872 Cover from Sweden to Burma, by Lauson H. Stone	18
Greenland's Inverted Overprint	21
Scandinavian Literature Notes, by Alan Warren	22
Giro: An easy way to pay overseas bills, by Dr. Dan Laursen	26
Faroe Islands Catalog: A Review, by Alan Warren	27
Meeting Schedule	28
1938 Swedes and Finns FDC Catalog	29
Transfers & Re-entries, by Alan Warren	30
Delaware Chapter 13 Auction	32
Watermark Varieties on 5Kr Gustav V Medallions, by David Engdahl	33
ROMPEX Annual Meeting	34
Bulletin Board (Includes Scandinavian POs on the Internet)	35
President's Letter: Gifts to SCC now tax deductible, by Paul Nelson	37
Stamp Mart, by Eric Roberts	39
Library News, by Doc Melberg	40
Chapter Contacts (followed by chapter news)	43
Membership Exchange	48

Deadline for May Issue: March 31, 1996

Editor: John Lindholm
2316 Lakeview Dr.
Fergus Falls, MN 56537
(218) 739-3260

Executive Secretary: Robert W. Lang
P. O. Box 125, Newark, DE 19715

Business Manager (Advertising):
E. A. Menninger, PO Box 457
Lillington, NC 27546

THE POSTHORN (ISSN 0551-6897) is published five times yearly, February, May, August, September & November, by The Scandinavian Collectors Club. Membership, including subscription, \$15 per year, \$21 for Non North American addresses. Contact Executive Secretary for membership & change of address. Advertising rates & terms available from Business Manager. Second class postage paid at 102 So., Main, Madrid, Iowa 50156. Copyright 1996 by The Scandinavian Collectors Club.

POSTMASTER: Send Form 3579 to The Posthorn, SCC Exec. Secretary, P.O. Box 125, Newark, DE 19715

Affiliate 79, American Philatelic Society
Affiliate, Royal Philatelic Society of Canada

Printed in USA
(USPS 603680, ISSN 0551-6897)

The leading auction-house in Norway

Buying and selling Norwegian stamps has been our speciality for more than 25 years. We have two auctions every year and several of the "gems" in Norwegian philately have been sold through our firm.

The Norwegian philatelic market has for many years been one of the worlds strongest.

Our thorough handling of the material submitted for sale, together with the prices realised, have given us an international reputation for being the leading specialists in Norwegian stamps.

We are always in the market buying good stocks and collections of Norwegian stamps, and whether you are considering buying or selling stamps from this area, you should contact us.

F.C.MOLDENHAUER AS
BERGENS FRIMERKEFORRETNING

P.O.Box 65, N-5032 Minde, Norway
Telephone : -47 55 31 44 20 FAX : -47 55 32 63 55

Iceland's First Airmail Issue: "Plating" with Transparency Overlay Leads to Discovery (Tables include varieties not previously reported)

by A. A. Gruber

A method has been devised for identifying positions of multiples (and some singles) of the first Icelandic air stamp on the sheet by using a transparency overlay of the configuration of the airplane overprints. Minor varieties on the basic stamp combined with overprint varieties and the relative positions of the overprints permit identification of most stamp locations in the sheet.



Fig 1. — upper left margin block of Iceland's first airmail issue.

The Basic Stamp

The underlying stamp for the first airmail issue is the Christian X 10 aur red of 1920; one of 21 in the first Christian X series. At the time, Iceland was a territory of Denmark and all of its stamps were produced by H. H. Theile in Copenhagen. That building housed the Post & Telegraph Museum. With the gracious help of Eric Jensen and Tove Niemann in the museum, I perused all the proof sheets of the series and examined the 10 aur red in detail. (The 10 aur first issue was printed in two colors, red and green.) In addition, I examined the actual used printing plate.

Beautiful craftsmanship was my first impression of the sheets (Fig. 2 shows a portion) and plate. The colors and metal working are splendid. The plate is composed of five sections of 2x10 clichés arranged horizontally, totaling 100 stamps. When we discuss varieties the importance of the repetition of the 20 cliché sections will become apparent.

My second visual impression was the absence of the central portrait vignette in the clichés. Just 100 vignettes were used in all values of the first issue. The second issue of 1931 — 1937 utilized new vignettes and the reason is apparent when you look at the 100 worn originals now residing in a simple brown paper bag. Vignettes were a separate printing run. Even on the monochrome stamps, like the 10 aur, there is a slight color difference between frame and vignette. Registration is excellent in most instances and in my opinion does not serve as a ready means of identifying position on a plate. It has been suggested that with computer imaging, vignette registration will permit "plating." Perhaps philatelists will have the tools to do that soon.

The Underlying Stamp's Varieties

Many useful minor imperfections are seen on the stamp frames. These are described in Table 1 in order of location. Each frame variety is collated, starting with an upper case **F** followed by a lower case letter (e.g. **a, b, c**, etc.). A few vignette varieties are also identified and assigned letters (**Va, Vb**, etc.). Except for **Vc**, the latter have not proven to be as useful as the frame varieties.

Table 1

Varieties of the Underlying Stamp

Frame Varieties (F)

Plate	Position	Code	Description
12,32,52,72,92		Fa	Bulge on inner left leg of M in left FRIMERKE (also known as joined ME, sometimes faint) & slight bulge on E outer lower limb
13,33,53,73,93		Fb	Red spot in northeast C upper limb
29		Fc	Slight deformity in border design to right of R in AUR
31,51		Fd	Bottom right corner of A in AUR indented
44		Fe	White dot over F of left FRIMERKE
49		Ff	Red spot within bottom of U in AUR
71		Fg	Right leg of A in AUR indented on outer right side

Vignette Varieties (V)

Plate	Position	Code	Description
13		Va	White mark @ King's left eye extending onto left forehead
51		Vb	Small dark area to left of head near frame & opposite
66		Vc	White spot in right eyebrow

Frame, but not vignette, varieties were confirmed on plate proofs at Denmark's Post and Telegraph Museum. This analysis is, as always, open to revision, additions and improvement of the precision of the language.



Fig. 2 — portion of sheet of Christian X 10 aur issue used for the airmail overprint. Top left here is position 31. If reproduction is good you can see "joined ME" on 32 and spot right in the middle bottom of northeast C upper limb at 33. Courtesy of Danish Post.



Fb — red spot in northeast C upper limb
Here appears as a black indent. Look close.



Vc — White spot in right eyebrow.

The Airmail Overprint

When an airmail stamp became necessary in 1928 there was an excess inventory of the Christian X 10 aur red available so overprinting was the logical solution. With the help of fellow Scandinavian Collectors Club members in Chicago, I became intensively involved with this stamp. One showed me a full sheet at World Colombian Expo. In astonishment, I started making quick measurements. Laying a straight edge horizontally and vertically along the lines of overprints I quickly discovered that not only were there major misalignments, but seeming rotations of the figure as well. The pattern of the overprints on the sheet is sufficiently "skewed" to permit some plating of the sheet by examining the relative positions of the airplane overprint.

Later, I bought a full sheet. My collector wife, Annette Gruber, suggested using a transparent overlay of the black overprints on the sheet. Masking out the red stamps, we made the transparency (see Figure 3 for an idea of how it works). Now we had a useful tool for studying Iceland's first airmail issue.

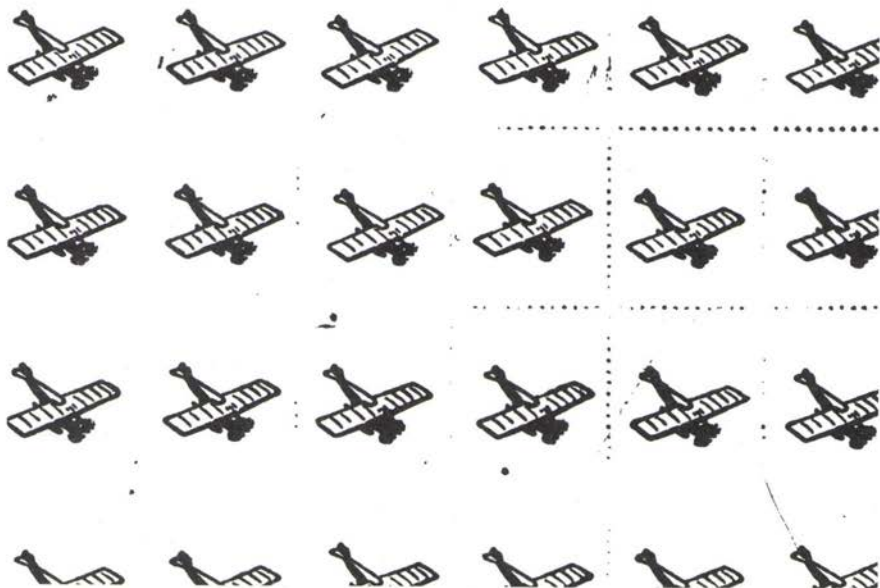


Fig. 3 — The overprints do not fall in a straight line, either vertically or horizontally. By overlaying relative positions of overprints, one can determine plate positions of some multiples. A transparency was made for this purpose (portion shown here).

Method of Overprinting

The reoccurrence of the "missing" rib in the plane's left wing variety led the late Roger A. Swanson to report that the overprinting device used in 1928 covered only half of the Chr X sheet (see *Linn's Stamp News*, March 25, 1968). Two overprint passes were necessary per sheet. There is some speculation that all the lower sheet halves were overprinted first. Olafur Jvanndal prepared the overprinting device with the actual work accomplished at Félagsprentsmidjan Reykjavik, a private shop in Iceland. A total of 199,900 stamps were overprinted. The first 100,000 were delivered May 31, 1928 followed by 99,000 on June 4. The Danish Post and Telegraph service usually received 2,000 samples but didn't in this case. The museum at Copenhagen did not have a proof copy in 1993, nor have my correspondents in Iceland been able to report a copy in official hands in Reykjavik.

Overprint Varieties

A careful examination of each overprint on the two sheets examined reveals a number of constant varieties noted in Table 2 as **Oa**, **Ob**, etc. Please recognize that the distance between rows 41/50 and 51/60 is not consistent due to the two pass procedure.

Table 2
Varieties of the Airmail Overprint (O)

Plate	Position	Code	Description
1,51		Oa	Long right inboard wing rib
2,52		Ob	Broken off left inboard wing rib, & third inboard rib reaches left wing leading edge.
11,61		Oc	Bent left pontoon bow.
23,73		Od	Right pontoon's stern visible behind wing.
31,81		Oe	Heavier ink on leading right wing.
36,86		Of	Fractured left outboard wing rib.
37,87		Og	Black tear, left outboard wing rib
39,89		Oh	Notch in rudder.
41		Oi	Empennage almost severed [but not in position 91??]
41,91		Oj	Ink blob at right cabin window
47,97		Ok	Cut off rudder top
50		Ol	Outer left wing railing edge notch [less apparent in position 100]

All of the above determined on a full pane and confirmed with a black and white reproduction of a different pane. This analysis is, as always, open to revision, additions and improvement of the precision of the language.

[Note that empennage = tail assembly]

Plate Positions of Stamp and Overprint Varieties

The information in Tables 1 & 2 and Figure 3 are combined onto a 100 stamp plate using the commonly accepted layout shown in Table 3. The left column of digits is the location number assigned to the left column of stamps. The upper left position is position 1; the upper right stamp is position 10 and so forth, proceeding to position 100 at lower right. For an example, locate position 73 where the frame variety **Fb** and the overprint **Od** reside.

The 20 cliché multiples in the basic stamp become obvious when we note the frame variety **Fb** appears in positions 13,33,53,73,93. Reexamining Table 1 helps to clarify this. But what of the irregularities of **Fc** through **Fg**? The metal plate provides answers for **Fd**, **Fe**, and **Fg**. Small dents occurred in the expected places. At **Ff** there was extra metal. These varieties were manufactured during the 100 subject plate assembly. I could find no physical evidence for the slight frame variety, **Fc**, on the metal.

The paired overprint variations such as **Oa**, positions 1 and 51, can be seen on Table 3. A reexamination of Table 2 illuminates this pairing. But what of **Oi** and **Ol** that do not pair? Here arises the argument that the lower half of the sheets were overprinted first. The empennage (the plane's tail assembly) in position 91 had not broken nor the trailing wing edge notch become apparent in position 100 until

Table 3
Christian X 10 Aur Airmail Issue of 1928

F= Frame Varieties

V= Vignette Varieties

O= Overprint Varieties

1	Oa	Ob							
11	Oc	Fa	Fb Va						
21			Od					Fc	
31	Fd Oe	Fa	Fb			Of	Og		Oh
41	Oi/Oj			Fe			Ok	Ff	OI
51	Fd Vb Oa	Fa Ob	Fb						
61	Oc					Vc			
71	Fg	Fa	Fb Od						
81	Oe					Of	Og		Oh
91	Oj	Fa	Fb				Ok		

Numbers at left refer to the number of the first position in that row.

late in production. They do show on the upper half of the sheet in locations 41 and 50 since by the time of the second pass the damage was clear. When the Iceland

P & T archives produce a proof sheet of the overprints, speculation can be replaced with evidence.

There are, however, large areas of the sheet, Table 3, with no visible varieties. The misalignments and the rotations of the overprints, while not as certain or decisive for identification as the frame and overprint varieties, can fill in the gaps. The overlay, Fig. 3, made in the form of a transparency, can be manipulated over stamp multiples to good advantage. One simply finds where the relative positions of the overprints on the multiple line up with the overprints on the overlay. (The diagonal error across the overlay is 1/2 mm less than the actual measurement across the entire 1/2 sheet. That translates to an 0.2% error.)

Testing Multiples for Plate Positions

I invited SCC members to loan me multiples for testing of the methods devised. I examined twelve. Seven were positively located. Two had no frame or overprint varieties for positive identification but by using the overlay to examine relative overprint positions, two possible locations were noted. For example, one block of four can be at positions 7,8,17,18, but, because of the overprinting practice, could also have been located at 57,58,67,68.

Evidence for Two Overprint Setups

The three remaining multiples wouldn't fit the overlay. Of the three, two were from the pane's right side. They were returned to their owners before a new possibility was considered.

The last example was an UL mint block of four with selvaige intact. Unlike others I had examined, position 2 lacked the variety, **Ob**. Varieties **Oa**, **Fa** and **Oc** were in place. The lack of fit is due to a greater distance of 1 mm between the first and second rows than on the overlay. (There must be a greater distance between rows on this sheet than on the sheet from which the transparency was made.)

I suspect that the broken rib variety, **Ob**, in position 2, was discovered during the overprinting and a new slug inserted. The insertion loosened the matrix contents which at best had less than uniform spacers. When the whole was locked up again, the overprint configuration had changed. From this I conclude there were at least two overprint rackups.

Summary

1. The Iceland Chr X 10 aur red (1920) proof sheet plus the used printing plate were examined in Copenhagen. Two mint sheets of this issue overprinted for airmail use (1928) were studied in the U.S. Identification of the basic stamp and overprint varieties are listed in Tables 1, 2, 3.

2. The misalignments and rotations of the overprints are captured on a transparent overlay. The actual transparencies will be in the SCC Library for members' use.

3. Using the foregoing information, a number of airmail multiples were examined and their locations in the printed sheet identified. In three instances, positive position location failed. In one of those, positive position as an UL four block is certain from the selvaige. However, the broken rib variety is missing and there is increased distance between overprints in row 1 and 11 ("11" would be the "second" row).

4. The existence of at least two overprint rackups is indicated.

Thanks to H. Gudmundson, F. Bloedow, R. Lipscomb and R. Collin of the U.S. and the late P. Asgeirsson of Iceland.

References:

- Fenger, Walter, "Studies of Variants on Iceland's King Christian X Series," *The Posthorn*, Nov. 1991.
- Gruber, A. A. "Iceland's First Airmail Issue and Variety," *The Posthorn* May 1992
- Swanson, Roger A. *Linn's Stamp News*, March 25, 1968

Welcome to the Leading Norwegian Stamp Auctions!



Twice a year we arrange a public auction in Oslo as we have been doing for some 15 years. The total turnover has been some NOK 10 millions a year. Each auction contains approximately 1100 lots with starting prices from NOK 100.

Our most expensive item was sold for \$125,000 in 1987; Norway No. 1 in a block of nine from the world famous "Vi King" collection formed by Mr. Jared H. Richter. This is a Norwegian all time high.

The auctions also include top quality objects from many other countries. The market for stamps in Norway is one of the strongest in the world, and this is reflected in the prices realized not only for Scandinavian items. Our computer systems includes some 18,000 customers worldwide and we believe our selling potential would be most interesting also for vendors abroad.



We would be happy to serve you. Drop us a line - or a fax or give us a call for a free copy of our auction catalogue or for further information.

Elisenbergvn 19 N-0207 OLSLO 2
NORWAY. Phone 47-2-441914
FAX 47-2-560404

More on Philately Under Fire: British FPO #115 in Norway By Hal Vogel

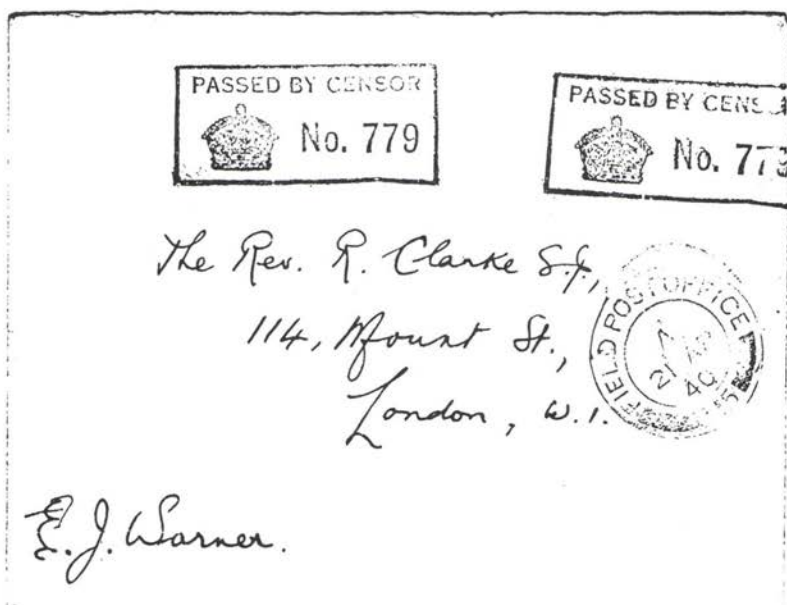


Fig. 1 — This cover is struck one day after FPO 115's opening (21 April 1940).

The May, 1995 *Posthorn* included a nice article about a somewhat arcane subject that is one of my favorites in Scandinavian philately — military-related mail from the north. I am referring to the late Sven Åhmen's *Philatelic Zeal Under Fire*. It showed a piece of mail from one of the German troops defending against the Allies' attack in Northern Norway.

However, the article, as appealing as it was, seemed to leave certain erroneous inferences, which may simply have been the result of some misplaced wording. Besides, any author can be excused for factual errors regarding activities of the North West Expeditionary Force (as the British referred to it). The few historical accounts about this episode often are as muddled and scant as the official records they might reference.

The author might have confused ground attacks in the Narvik area with the earlier naval battle off Narvik, when he stated that "several German ships in the harbor [were sunk] in the harbor at the end of May." Seven German destroyers were sunk by a British squadron a month earlier on 13 April 1940.

The cover illustrated in the May, 1995 article, canceled 10 May 1940, is described as "from the period before the ill-fated Allied attempt to retake Norway quickly from the Germans." Actually, the combined Allied military operations not only had begun to sporadically "retake" Norway from several points, but had already established a presence in Norway's northern area of operations.

The British military post office operating at Harstad (on an island off the NW coast of Norway, not so far from

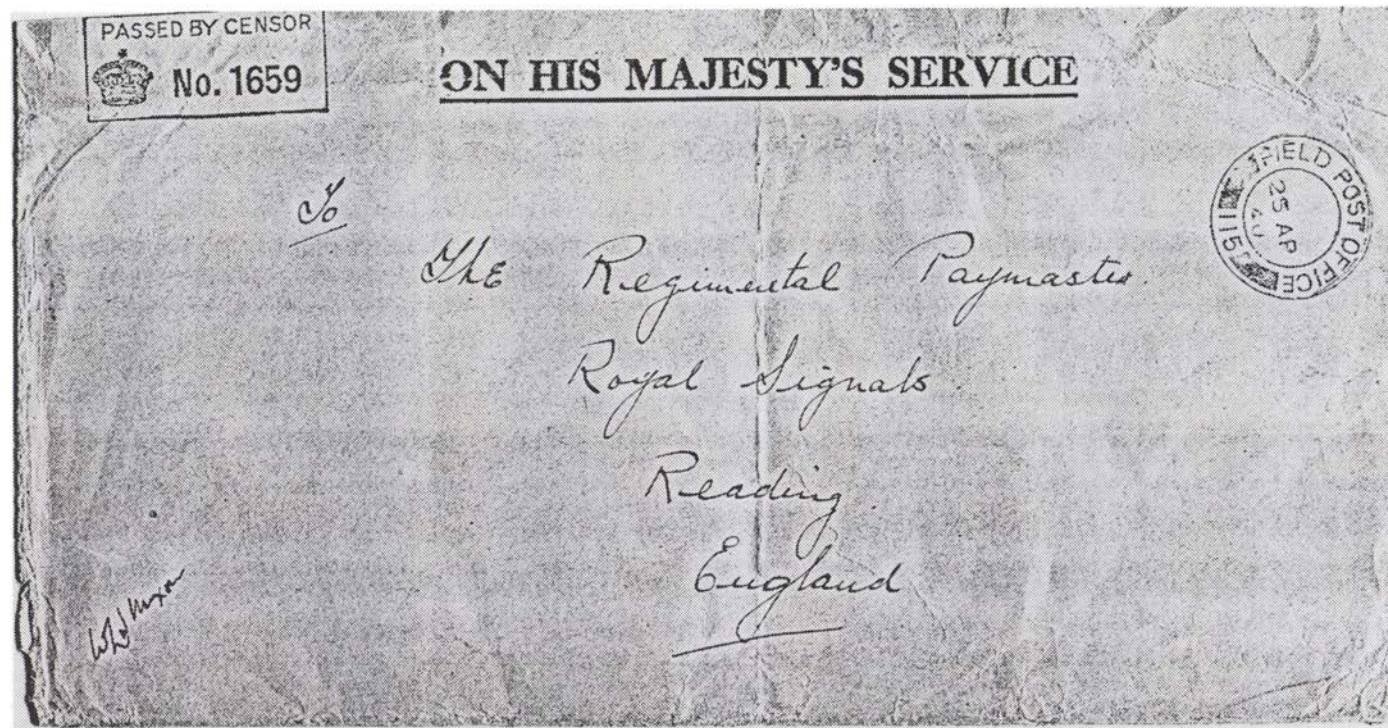


Fig. 3 — Here is official mail posted 25 April 1940 by the British from Harstad, off the Northwest coast of Norway some time before the German soldier sent along his philatelic mail sent from the mainland, illustrated in our May, 1995 issue.

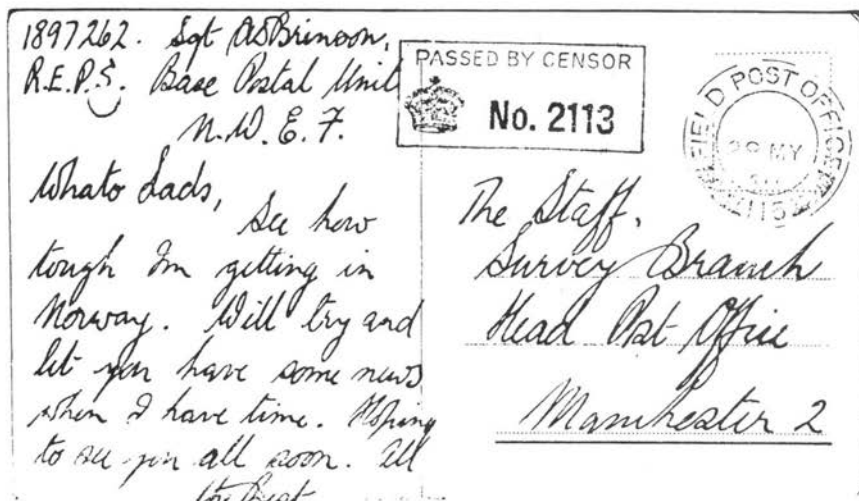


Fig. 2 — This cover is from the feldpost postal clerk and struck one day before closing (29 May 1940). The sender also identifies his assignment ("N.W.E.F. = North West Expeditionary Force).

Narvik) had been functioning since the prior month. Illustrated here are three covers from April 12, 1940 (the second day of service) until May 29, 1940 (the day before it closed) with the British Feldpost office number 115.

The sender of the cover in the May, 1995 *Posthorn* article was probably serving as a "ground controller" (or contemporary terminology) for aviation support of the engaged German field units. Also, he was probably a paratrooper, based upon his Luftwaffe feldpost number, that identifies a Luftwaffe communications unit. The German Air Force would have airdropped its own "ground controllers"

at this time. They probably had not accompanied the original units that seized Narvik, but rather were inserted later as the German's position needed bolstering.

It is correct that the franking on that cover was superfluous. This is not only because it is mixed franking. Absolutely NO franking would have been required. Soldier mail went postage free back to Germany. Later we would see some air mail feldpost labels franking mail that was authorized air delivery from this theater of war. The military air post service from this theatre, however, would not begin for a while.


* S * C * C *

S.C.C. Chapter 13 Delaware

28th Annual Auction
Of Scandinavian Related Material
June 25, 1996


Attention New Bidders: Catalog Free upon Request
PO BOX 59, Rockland, DE 19732

Catalog is sent automatically to bidders of the past three years




Filatelia

Subscribe to the beautiful stamps from Kalaallit Allakkeriviat. Write to us and we will send you a sales brochure of all the stamps and other products currently for sale. The brochure also contains information on how to subscribe to stamps from Greenland.



Filatelia



Kalaallit Allakkeriviat
The Greenland Postal Service
Filatelia
DK-3913 Tasiilaq
Greenland
Phone +299 18044 - fax +299 18432

Foreign Usages of the 1911 Penni Issue

By Ed Fraser

Why is this proper rate cover so very unusual?



Figure 1 — Registered cover postmarked Helsinki, 29 April 1918, to Germany, backstamped Berlin SW, 5 May 1918, with typical mixed issues franking of two 1917 10 penni stamps and two 1911 40 penni stamps.

A logical reaction to covers like the one in Figure 1 might be that surely such covers must abound! It is a straightforward registered cover to Germany postmarked in Helsinki on the 29th of April 1918. The basic rate was 50 penni for up to 20 grams, and an additional 50 penni for being registered. The 50 penni letter was valid from 12 March 1918 through 31 January 1921, although the registry rate was increased on 12 April 1920. Also, it is after the rate changes and mail changes during the Civil War in March 1918 in Helsinki, when certain foreign usages were unusual.

Checking the franking, the 10 penni stamps were issued on 15 October 1917, and were widely used and valid until 1 June 1920. The 40 penni stamps were issued in January 1911, and likewise were valid until 1 June 1920, although

usages of the "Russified" stamps in 1919 and 1920 are very uncommon, and even usages in late 1918 seem far more infrequent than in the first half of 1918.

Here is where it is apparently so easy to be misled. Remember those foreign rate tables? The rates for a foreign letter could only be in kopecks from 15 August 1900 until 11 March 1918 — almost 20 years! Penni and mark rates only existed for domestic mail, and both the 1901 series of issues and the 1911 series of issues, including the 1915 10 mark stamp, were only printed and allowed for domestic franking. However, on 12 March 1918 Finnish stamps were recognized by the UPU for franking international mail, thereby replacing the Russian stamps previously required.

Technically, any penni or mark stamp still valid for domestic postage became



Figure 2 — The 1911 type postal card to Sweden with an additional 1917 type 10 penni stamp to make up the 20 penni foreign rate, canceled Åbo 29 April 1918.

acceptable for foreign mailings, even if it were originally issued for domestic use only. Where are these foreign usages of the 1911 issue? Have you seen many?

Postal card usages such as in Figure 2, after 11 March 1918, are indicated in Norma, with nominal premiums. The postal cards are apparently more common than foreign usage of the 1911 stamps on envelopes. Do *Posthorn* readers have any examples or other indications for the rarity of these usages?

Figure 3 was hard to figure out because the cancels were on top of each other, and were weak strikes to begin with. A Hanover, Michigan transit postmark reveals that the card took almost a year to be delivered. Neither the picture of two small children feeding two pigs and inconspicuously printed in Finnish "Happy New Year" (on front of card) nor the bland message in Finnish, offer any explanation as to why it took eleven months to reach Michigan. Normally, it would not be expected at this time period that the censorship office was responsible for such a delay. However, there is no other apparent reason, so

perhaps it was the odd use of a Happy New Year card in June or the use of any picture post card [which was not permitted for some World War II censored mail] that caused the card to be held by a censor. Do *Posthorn* readers have thoughts on this long delay?

At any rate, here is another "1911" penni stamp franking international mail. Comments appreciated: Ed Fraser c/o Smith Barney, Suite 300; 225 Broadhollow Road; Mellville, NY 11747

Three books were very helpful:

1. *Post Offices in Finland 1638-1985*, published in 1988 by the Philatelic Federation of Finland as publication #9

2. *Suomen Tasavallan Siltaleimat* by Eero J. Helkiö, which illustrates the bridge cancel styles that followed the one used here.

3. *Directory of Post Offices*, published by the United States Post Office Department. My edition of this last book happens to be from 1959, but even an old one is a good reference as it lists towns by state, lists major post offices by county, and covers the entire United States. Unfortunately, Verana, the destination of figure 3, was not listed.

[*Further Reference: For a general look*

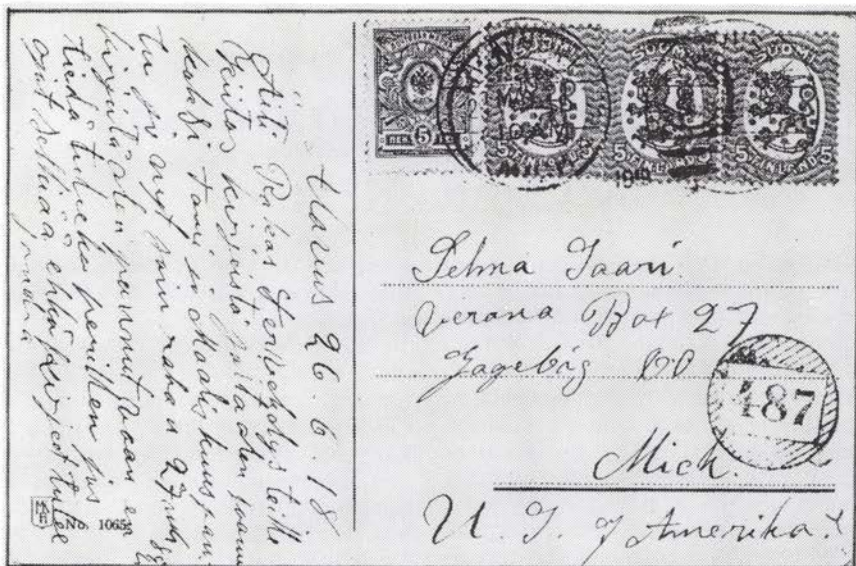


Figure 3 — Mixed issues franking on a picture post card to the U.S.! This post card is franked with three 1917 Republic 5 penni stamps and one 1911 Russified 5 penni to make up the 20 penni foreign post card rate. They are canceled “ALAVUS k.k. 26 June 1918” along with the Alavus k.k. area number 487 carrier cancel, and a Hanover, Mich. May 21, 1919 receiving cancel! Perhaps the delay in delivery relates to the faint purple 3 language [Swedish, Finnish, and German] censor handstamp “Censored in Finland.”



Figure 4— The picture side of the post card shown in Figure 3. *at Russian stamps used in Finland, refer to NORMA 1994/95, pp. 269-271. Be aware, however, of a typo(?) in the English translation. Previous editions of NORMA read:* “It remained obligatory to use Russian stamps on foreign mail until March 11, 1918.” The 1994/95 edition has dropped the word “until” for some reason.]

An 1872 Cover from Sweden to Burma

by Lauson H. Stone

In many ways the cover illustrated here, addressed to an individual in care of a Swedish ship captain and the Swedish consul in Rangoon, British Burma, is one of the more interesting Swedish letters sent abroad before the advent of the Universal Postal Union's rules and rates on July 1, 1875. On the other hand, there are major uncertainties that one encounters in attempting to determine the route taken by this cover, and it is necessary to point out some possibilities for its travels.

The Swedish rate table existing in 1872, when this letter was sent, included a published rate of 120 öre for letters to Rangoon, Burma. For reasons that we cannot know, the Swedish postal clerk did not apply this rate to this cover. Obviously the published rate depended on the availability of a ship going to Rangoon or its vicinity. To what extent the postal clerk had ship information, and why the clerk seems to have rated the cover 97 öre in postage, we do not know. We are not aware of a 97 öre rate to Rangoon or its vicinity.

However, among the markings on the cover we note the large "2" and the smaller "194" notations in the upper left corner, indicating that the clerk charged the sender double the 97 öre rate for letters sent to Calcutta, India, via Göteborg and England. This rate was valid from August 15, 1870, to February 14, 1873. Calcutta is not far from Rangoon and could have been a forwarding point. A possible explanation is that an inquiry by the postal clerk established the fact that, although

there was no ship to Rangoon at the time this letter was sent, there was one to Calcutta.

Indeed, several postal markings on the cover indicate that it passed through London, traveled on a British ship to Calcutta and was there forwarded to Rangoon. These markings are:

1. Göteborg postmark canceling the stamps on October 4, 1872. Göteborg was the departure point from Sweden for letters going through England or Denmark to India.

2. London "Paid" postmark on the front dated October 7, 1872. London was the most likely point of departure for a British ship to Calcutta or Rangoon.

3. Oval "Sea Post Office" mark on the back, dated October -5, 1872. Inquiry indicates that this is the mark of a sorting office on board a British ship (personal conversation with Robson Lowe).

4. Calcutta postmark on the back, which appears to have been applied in November.

5. Handstamped "2d" on the front indicating postage due of 2 pence for forwarding the letter from Calcutta to Rangoon, to be paid by the recipient.

6. Illegible postmark on the back. It is within the realm of possibility that this is a Rangoon arrival postmark.

The cover is franked with a strip of three 50 öre coat-of-arms stamps, a single 24 öre ring type stamp and a single 20 öre reclining lion stamp. It is pictured on page 163 of *Swedish Letter Rates to Foreign Destinations 1855—1895* by Billgren, Bjäringer and Stone.

This cover and others described in this series of articles by Mr. Stone of New York, now 91, were unique items in his exhibit of Swedish letters to foreign destinations which won large gold medals at AMERIPEX and STOCKHOLMIA in 1986.

ENTRUST TO US YOUR STAMPS



Icelandic official cover with 5 Aur perf. 14 + 3 Aur perf. 12 3/4 = 8 Aur. Only known on private hands with this rate. One of the lots at our auctions in 1995.

During the past few years we have had a real break through as one of the leading auctioneers in Scandinavia. We have reached one turnover record after the other. One reason is that we have highlighted security for the vendor together with professional skill.

BUYING OR SELLING

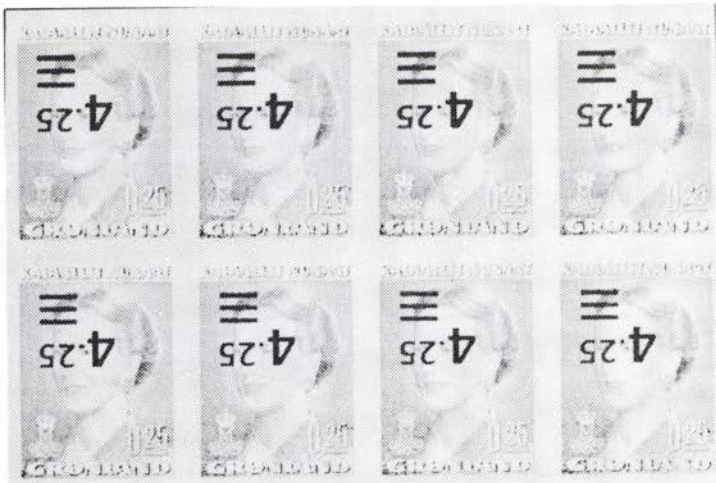
Either way - contact us today. We will send you a free trial copy of our next auction catalogue.

LARS-TORE ERIKSSON

Stamp Auctions

**Box 250 ♦ S-391 23 KALMAR ♦ SWEDEN
Tel +46 480 15090 ♦ Fax +46 480 15006**

Greenland's Inverted Overprint



Inverted overprint error arrived in Illulisaat Post Office this January.

In December it was decided that Greenland's postal rates were to go up in January but the Post would not have stamps in the new values immediately.

Therefore, the Queen Margrethe 0.25 Kr was overprinted 4.25 and the 1.00 kr received the 4.50 value. These stamps were circulated at post offices in Greenland beginning January 2, 1996.

It turns out a number of sheets were distributed with inverted overprints. Thorkild Jakobsen got 11 sheets in Ilulissat/Jakobshavn. Ten sheets were found at the Qeqertarsuaq/Godhavn post office and were withdrawn.

Kalaallit Allakkeriviav (Greenland Post) guesses we are talking about a bundle of 25 sheets. That means four

are unaccounted for. Could there be a postally used example out there? Actually, the number of inverted overprint sheets isn't really known for certain.

The Danish P & T admits they must have turned some sheets upside down when feeding the printing machine and quality control didn't catch the errors.

Greenland seems to have an error every now and then to keep up folks' interest. The story goes that the Illulissat customer bought an inverted overprint stamp. Realizing what he had, he quickly returned to the post office and bought the eleven sheets.

New stamps in the proper denominations are to be released February 29.

— J. L.

Did You Know? New Sweden Issue

When the US issued our part of a three-way joint issue with Sweden and Finland on March 29, 1988, to honor the New Sweden colony's 350th year, there were only five days left for the 44 cent international airmail rate.

That meant this issue, denominated for airmail to Sweden and Finland (and most every other international destination), is very hard to find properly used as single franking. FDCs sent abroad exist but how many "commercially used" covers from the other four days can find their way in a Swedish-American or Finnish-American thematic collection?



Scandinavian Literature Notes

By Alan Warren

Writing in the October 1995 issue of the *Rossica Journal*, Leonard Tann illustrates some wonderful covers showing Russian stamps, as opposed to Finnish stamps, used in the Åland islands. Typically used are the kopeck values of the 1902 and 1914 issues, but also found are much rarer examples of the War charity stamps and the Romanov issue used there as well.

In his Icelandic Notes column in the September issue of *Scandinavian Contact*, Brian Flack illustrates a cover from the Wilkins-Ellsworth expedition of 1931. His cover bears a 2 Kr Icelandic stamp, is addressed to Detroit, Michigan, and is canceled August 28. The theory is that the cover was handed over at Spitzbergen to a vessel headed to Iceland so it could be sent on to the U.S.

In the same issue, Eric Keefe presents a philatelic glossary of nearly three dozen terms in Russian (Cyrillic) and English. The terms are often found as markings on mail between Russia and Finland around the turn of the century. In the October issue of *Dansk Filatelistisk Tidsskrift*, editor Lennart Weber describes the 60th anniversary of the Frederiksberg Stamp Club, one of the oldest clubs in Denmark.

Issue 3/95 of *Frimerke Forum* from Norway marks the 150th anniversary of the first Norwegian postmark, from Christiania in 1845. For the thematic collector, editor Sven Bølum writes about sports as depicted on the stamps of Norway.

Sweden Cancel Errors

In the September issue of *Svensk Filatelistisk Tidsskrift*, Lennart Ivarsson begins a series of articles on errors in the 19th century handstamp cancels of Sweden. In his first article he describes

a type Normal 7 boxed cancel with the "S" reversed in "Oroust", and a Normal 10 cds with the "J" reversed in "Norrtelje." In the same issue Harry Hohndorf sheds some new light on the 1935 use of the fieldpost cancel of the "Svenska Bataljonen Saar."

Andreas Kessler continues his series on plate flaws of the 10 øre Arms type issue of Denmark in the August issue of the German publication *Philatelistische Nachrichten*. In the same issue Rolf Dörnbach begins a series of articles on the mails of some two dozen islands which surround Iceland. Georg Heerd describes WW I period military mail in Åland.

In the October issue of *Het Noorderlicht* from the Netherlands, editor G. van der Vossen takes readers on a tour of the North Sea with stops in Ny Ålesund, Hopen, Jan Mayen and the Faroes. In the October issue of *Skilling*, Ingolf Mathiesen writes about the charity stamps of Schlesvig.

"Mailomat" Forerunners

The Meter Stamp Society published a book last year by Douglas Kelsey, entitled *Mailed via "Mailomat"*. The publication marked the 75th anniversary of metered mail. The Mailomat was a specific mailing device where patrons could determine the amount of postage for an item to be mailed and insert the money along with the card or letter and have it meter stamped for the exact amount. It was a sort of automated post office.

In a section of Kelsey's book he describes some of the early forerunners of this type of service. From August 24 until September 14, 1900 a device was installed in the lobby of the general post office in Christiania, Norway. It was invented by Charles Kahrs and is-

sued either a 5 or 10 øre stamp depending on the coin inserted, and canceled it. An impression from the machine served as a receipt.

Another experimental device made by an engineer named Gravidahl was tried in Christiania post office in April and May 1903, but was not reliable. This was quickly followed by a franking machine made by Karl Uchermann and Nils Krag, for use only on domestic mail. Several of the machines were placed in service in the Christiania post offices and a few were installed at businesses. They were gradually withdrawn from service due to poor impressions and a dispute by one of the inventors. Information on this book can be obtained from author Kelsey at Box 65930, Tucson AZ 85728.

Approaching his 80th birthday, Swedish philatelist Bo Erik Stavenow is saluted in the October issue of *Svensk Filatelistisk Tidskrift*. In another article, Bror-Erik Sahlstedt describes the counterfeit Bromarf local post.

Denmark's Cross Watermark

In the November issue of *Philatelistische Nachrichten*, G. Pansegrau discusses the two formats of the Danish watermark with crosses. One appears as the mirror image of the other. In the same issue Jürgen Tiemer describes the handling of mail from Norway going abroad during WW II.

In the 4/95 issue of *Frimerke Forum* from Norway, editor Sven Bølum writes about some noteworthy anniversaries recently marked with new stamp issues. These commemorations include the 150th anniversary of the birthday of Conrad Röntgen, the centennial of the discovery of x-rays, the 100th anniversary of Alfred Nobel's will, and the 100th anniversary of the transmission of the first wireless message by Guglielmo Marconi. In the same issue Arne J. Bay and Editor Bølum co-author the first in a series of articles on unstamped official mail, beginning in 1712.

Jens Rosing

Dan Laursen, SCC's editor for Den-

mark, Faroes and Greenland, wrote an article on the Greenland stamp and cancel designer Jens Rosing, which appeared in issue No. 4-5, 1995 of *Tidsskriftet Grønland*. The occasion was Rosing's 70th birthday last summer. The designer has produced the artwork for many stamps which were then engraved by either Czeslaw Slania or Arne Kühlmann.

The engraved stamps of Greenland have long been admired by collectors. In recent years some issues have been printed by a combination of engraving and offset. The many contributions of designer Rosing since the late 1950s have delighted collectors for years. A copy of Dan Laursen's article "Jens Rosing som frimærketegneren" is available in the SCC Library for reference.

The December issue of *Svensk Filatelistisk Tidskrift* is devoted largely to reports on NORDIA 95 in Malmö, with illustrations of some excellent items from outstanding collections. Another article calls attention to the recent sale of World War II vintage fieldpost handstamps. A general discussion ensues on the dangers of canceling devices which in the wrong hands can lead to counterfeit postal history items.

In the December issue of *Dansk Filatelistisk Tidsskrift*, Otto Kjærgaard discusses various aspects of building a "home" collection or a postal history collection pertaining to one's home town or county. The NORDIA 95 show catalog contains several articles pertaining to the new stamps issued in Sweden in conjunction with the show. For example Gunnar Dahlvig wrote about Tycho Brahe and the stamps of similar design issued in Denmark and Sweden to honor the astronomer.

Knut Norberg discusses Saturday delivery and illustrates several covers with the special "Lördags utdelning" label. Gert Fredriksson writes about the postal history collection or "homeland" collection. A large section of the book is devoted to the listing of the exhibits.

* S * C * C *

SCANDINAVIAN C

A n n u a l M e e t i n g

Consign Now for the Ultimate Scandinavian

The Official Show Auction at Romplex '96 Aurora (Denver), Colorado May 18. Complimentary catalog mailed to buyers worldwide. Sell to Scandinavian collectors everywhere.

Competitive terms. Buyer's premium at only 10%. Don't let anyone tell you that it doesn't make a difference!



Paradise Valley Stamp Company is dedicated to helping you build quality collections of lasting value. Please give Tor Bjork a call today.

Paradise Valley Stamp Company, Inc. • P.O.
602 970-1733 • F

Giro: An easy way to pay overseas bills

Very often we hear that our members would like to buy stamp material from a dealer in Scandinavia or another European country but hesitate because of the trouble getting an international money order or converting the amount from the US dollar to the other country's currency. Too often your local bank is not of much help.

Well friends, there is an easy and better way to do business in Europe: The Postal Giro System.

Two of the top people from the Danish Postal Giro System, Bøge Nielsen and Ole Nielsen, have been so kind as to inform us about the system and how to join. (Note: It is not necessary that your name is Nielsen to be in the Giro business.)

The Postal Giro system is really a bank run by the Post Office, a bank in which you deposit money. When you want to pay a bill you just order your GiroBank to transfer the sum from your account to the one you indicate on the special form. The GiroBank will do that and send you an acknowledgment that the transaction was carried out as ordered on that date.

The advantages of using Giro are obvious. You can settle every thing at home peacefully at your desk. Do your thing and mail the envelope. You can send money free of charge to other Giro accounts. All companies, businesses and most private persons have a Giro account over there. The system is there-

fore easy, safe, and cheap. "Cheap" may be relative to how often you use your account, however. In the past couple years Denmark has instituted a monthly fee (about US \$4-5) collected quarterly.

When you want to pay money into your own Giro account; you just send the GiroBank a check in dollars drawn on your own local bank account and to be credited to your postal Giro account number. Do not send bills, which in fact is prohibited in many countries. On the check draw two parallel lines a little bit biased from top to bottom of your check. They call it "to cross a check" over there and it means that the check can only be deposited to the account named on the check. Please remember there is a fixed fee for exchange of currency. If you want to send a money order you can do so. Just write on the back: "To be deposited to the credit of Giro account number . . ."

Many businesses will accompany the invoice or statement with their own pre-printed Giro form which you just fill out and send to your GiroBank which will then carry out the transaction. Your GiroBank will send you a bunch of Giro cards to use if a pre-printed one does not accompany the invoice.

Let us say that you have a Giro account in Denmark. From that account you can pay for purchased stamps in, for instance, Norway or Sweden, just by "giroing" money from your Danish

276

Jan. 01 19 01

Pay to the order of Jens Hansen, Acct # 123456 \$ 500.00

==== five hundred and nil 00/100 ===== Dollars

HOME
FEDERAL SAVINGS & LOAN
ASSOCIATION
BROADWAY-WILMOT OFFICE * TUCSON, ARIZONA

"To cross a check" (in Europe) means to draw two parallel lines diagonally to signify that the check can only be deposited to the account named on the check.

account to an account in the country in question. Many of the European Post Offices have accounts in other countries. The Greenland P.P., for instance, has their own account in the Scandinavian countries as well as Germany, Luxembourg and Switzerland.

There are many other advantages. You can learn about them all by writing to: GiroBank A/S. Girostrøget 1. DK-0800 Høje Taastrup, Denmark and ask for : the form *Giro 318 General condi-*

tions for the use of a postal giro account. If you are serious about opening an account ask for form: *Giro 521 Opening of a GiroBank account*, and you will get the necessary papers.

I have used a Giro account the last 35 years from over here and it works fine. I deposit \$500 twice a year; saving on the exchange fee. If your needs are larger just arrange your account accordingly.

— Dan Laursen

Faroe Islands Catalog: A Review

Færøerne: Frimærker og Stempler GF 10, 18th edition, 176 pages, perfect bound, soft covers, 5-3/4 by 8-1/4 inches, DAKA Forlag, Tervuren, Belgium 1995.

Eric v. Wowern and Erik Paaskesen have combined forces to issue the 18th edition of GF 10, the catalog of the stamps and postmarks of the Faroes, in the DAKA series of catalogs. DAKA has taken over the GF series that Eric Wowern has produced for many years. GF 5 on Greenland will appear later this year and other catalogs in the series will be published every other year.

The new catalog is in both Danish and English, although it is "English" English (e.g. "colour"). A brief legend at the beginning defines terms and symbols. The listings begin with the 1919 Provisionals and include values for various cancels on the bisects and surcharged stamps, followed by the 1940-41 Provisionals.

Next are the independent postal administration stamps starting in 1975. These listings include margin plate block numbers and major plate flaws. First Day Covers appear at the beginning of the entry for each stamp issue and are priced for covers with singles and blocks of four. The pictorial FD postmark is illustrated. The quantity printed for each stamp is shown.

Other details listed for each stamp include names of the designers and engravers, and the name of the printing firm and method of printing. Issues up to November 1995 are shown. Following the section on stamps are sections on booklets, year sets, yearbooks, presentation packs, maxicards, souvenir sheets, exhibition cards, first flights, PP or postage paid stamps, and perfins.

Of interest to specialists is the section on Faroese Postmarks. Examples of numeral, lapidar, star type, three types of "Bro" cancels and others are illustrated. A table identifies some fifty town cancels and the year the office was opened. Prices are then shown for Danish stamps with the various types of cancels in three forms— on single stamps, with stamps on piece, and on cover.

Separate listings cover pictorial postmarks, machine cancels, slogan cancels, roller marks, and ship mail including paquebot marks. Postal history marks for WW II are listed for both Danish and British mail and also Red Cross envelopes. Christmas seals conclude this excellent catalog.

Illustrations are quite good and the print is easy to read. This is an excellent reference work for both generalist and specialist.

— Alan Warren

SCC Annual, Regional & International Meeting Schedule

	Annual Meeting	Regional Meeting	Intern'l Meetings	
1996	ROMPEX Denver, CO May 17-19	APS StaMpsHOW Orlando, FL August 22-25	CAPEX '96 Toronto, Canada June 8-16	NORDIA '96 Reykjavik, Iceland June 8-16
1997	VAPEX Va. Beach, VA November	APS STaMpsHOW Milwaukee, WI August 21-24	NORWEX '97 Oslo, Norway April 16-21	PACIFICA '97 San Francisco, CA May 29-June 8
			PACIFICA '97 San Francisco, CA May 29 - June 8	
1998	CHICAGOPEX Late October	APS STaMpsHOW Late August	NORDIA '98 Odense, Denmark	
1999	Invitations Received	APS STaMpsHOW Late August	NORDIA '99 Turku, Finland	
2000	WINNIPEG, MB Early July	APS STaMpsHOW Late August	NORDIA 2000 Sweden	

SPECIALISED SCANDINAVIA

A new range of services from

ACORN PHILATELIC AUCTIONS

1. Regular **POSTAL AUCTIONS** (4 sales per year) of around 250 lots ranging from £30 to £500.
2. A **"WANTS LIST"** Service catering for the needs of collectors from Beginners to Specialists.
3. **LITERATURE SEARCH.** We will occasionally be offering books for sale or will seek out more elusive items.

Write now with details of your requirements to:

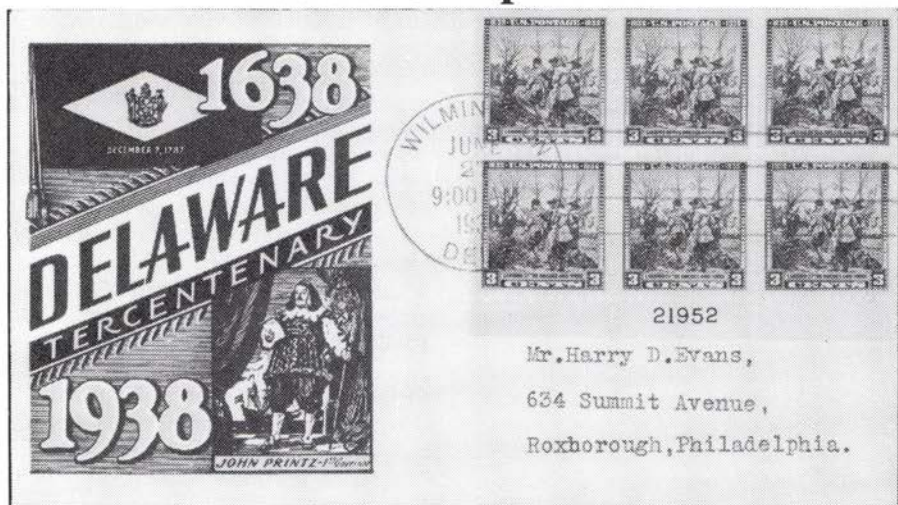
Acorn Philatelic Auctions

PO Box 152, Salford, Manchester M17 1BP

Tel: 0161-877 8818

Fax: 0161-877 8819

1938 Swedes and Finns FDC Catalog Nears Completion



After 30 long years of searching and studying, a pair of Wilmington, Delaware First Day Cover enthusiasts, Curtis Patterson and Harry Thernal, can see the light at the end of the tunnel! They have decided to wrap up and publish what is thought to be the most complete and exhaustive work ever attempted to catalog the cacheted First Day Covers and cancels of the 1938 Swedes and Finns Tercentenary issues of Finland, Sweden and the U. S.

Started as a labor of love, the effort to uncover new varieties has become a ceaseless endeavor which has resulted in a 66 page document listing 17 different classifications of cachets and cancels, plus additional listings of autographs, cachet makers, printing plate numbers, backstamps and an inventory. Classifications are based on the dominant theme of the cachet, such as the Seal of the State of Delaware, the Kalmar Nyckel, Old Swedes Church, the Map of Delaware or New Sweden, and the Landing Scene. Additional classes are included for post cards, proof cards and Finnish and Swedish themes and stamps.

In all, Curt and Harry have cata-

loged and cross-referenced 812 different covers, most of which are of the U.S. stamp (Sc #836). Among the listings are 312 basic cachet designs, 119 variations, 126 unofficial FD Cancels plus 65 Washington, DC Second Day Cancels. Also listed are 46 covers with the stamps of Finland (Sc #214), Sweden (Sc #268-74) and/or combinations of those with the Delaware stamp.

Plans are to add several pages picturing "sample covers" to introduce each of the major cachet and cancel classifications; and then have a limited number of catalogs published. It is not expected to be a "hot item," but may produce enough interest to warrant a "print-on-demand" status of publication.

An appeal for HELP! If you have an unusual FDC or usage of any of these nine stamps, or the Swedish Postal Card issued for the same occasion, **please send a photocopy of that cover** (both sides if both have markings) to: Bob Lang, P.O. Box 125, Newark, DE 19715. **The sooner the better**, as this catalog may go to press as early as this summer. We appreciate any inquiry or addition you can make to this penultimate work. Thanks! — B.L.

Transfers & Re-entries

by Alan Warren

Fredrik Ydell notes the passing of Örjan Lünig in the November issue of *Svensk Filatelistisk Tidskrift*. Lünig amassed the world's greatest transatlantic airmail collection. He is best known for writing the important resource text, *Luftpostens Historia i Norden*.

Angus Parker

The December 18, 1995 *Linn's Stamp News* reported another death, that of SCC member C. Angus Parker. Parker and Eric Etkin were managing directors of the British firm Argyll Etkin Ltd, well known dealers who frequently held booths at major U.S. shows. Parker died November 15 at the age of 68.

After serving with the medical corps in Tobruk during the second World War, Parker joined his family's building materials business. In the early 50s he established the Argyll Stamp Company and merged with Etkin in 1976. Parker collected Yemen as well as maritime

mail of Iceland, and he was twice invited to exhibit before the Royal Philatelic Society of London. He was a founder of the Scandinavian Philatelic Society of Great Britain.

Postal History Day at NORDIA 95 in Malmö brought together some excellent speakers — Ole Steen Jacobsen, Erling Berger, Bo Söderholm, Erik Hamberg and Erland Brand. The Swedish postal history group SSPD celebrated its 25th anniversary at the show.

Erik Lindgren Awarded Strandell Medal

The Swedish Philatelic Federation presented Erik Lindgren of Växjö the Strandell Medal during NORDIA 95.

Lindgren retired from a lifetime of working in the postal service. He has authored numerous articles in the Swedish Postmuseum's annual *Postryttaren*. In addition he has been a prolific author of articles, brochures and books on postal history.

Scandinavian Area Awards

In our last issue, we omitted one of our members who received an award at FINLANDIA 95. He is **Masafumi Shigaki** of Kawasaki, Japan. He received a large vermeil for his showing of "Ship Mail Around Sweden."

At the Omaha Stamp Show, Roger Quinby won a gold with his "Finland's 1918 Vaasa/Wasa Temporary Wartime Issue." Jeff Crown received a vermeil along with an AAPE award of honor for "Faroe Islands Post — 1839-1962." In the literature section of CHICAGOPEX, SCC's *The Posthorn* won a vermeil.

At Twin City Stamp Expo Ross Olson won a vermeil with his "The Postage Stamps of Sweden," Dave Anderson received a silver for "Sweden — Envelopes for Military Service Personnel," and Marvin Hunewell won a silver for "A Look at Danish Railway Post Offices." In the single frame entries Olson took a silver-bronze with "The Post Horn Design." Robert Paulson re-

ceived a silver and the UPSS award at FLOREX for "Sweden - 19th Century Postal Cards."

By all accounts NORDIA 95 in Malmö was a success. In the philatelic literature competition, SCC's *The Posthorn* won a silver, and the Scandinavian Philatelic Foundation's 2-volume work by Herbert Oesch, *Finland: The Color and Printing Identification of the 1875 Issues* won a vermeil. The highest award in the literature section was a gold awarded to Lars Boes for the *AFA Specialkatalog 1995*.

The Grand Prize for NORDIA 95 went to Knud Mohr of Denmark for his exhibit of "Copenhagen." The Grand Prix National was awarded to Kersti Larsson for "Sweden 1855-1889," which was also the best exhibit in traditional philately. The Grand Prix Nordic was won by Arne Bay for his "Norsk Posthistorie 1712-1855," which was also the best postal history entry.

Fifty Years Ago Today

An Early Faroes Article

In the January 1946 issue, Carl E. Pelander discussed collecting the Faroes. At the time, the only stamps were the 1919 and 1940-1 provisionals. Forgeries are mentioned, surcharges detailed, and fantastic collections outlined (Judge A. Carson Simpson had all thirteen dates of use of the first provisional — January 12th — 24th — on different covers). A list of Faroe mute cancels was attached.

A Rockwell Kent letter to SCCer B.I. Christensen stated: "The Greenland Air Mail stamp is a thoroughly unofficial stamp."

War Stories

German stockpiles of Norwegian stamps turned up in both Switzerland and Norway. A Danish engraver was in jail for collaboration. Christian Zoylner reports that when the need arose for

Christian X's 75th birthday stamp the guy was still in jail and the stamps had to be engraved in Sweden. *[A quick check of AFA shows that, indeed, Sven Ewert, the Swedish engraver, engraved this issue.]*

On the Home Front

The Hornblower reports that an SCC member hid his collection from burglars so well that he hasn't found it yet! Also, it was reported that Christian Zoylner advised Fill Foulk never to offer Scott Co. more than half of what they asked. This resulted in the following conversation, the subject being a fine mint copy of Norway No. 1, — Bill; "How much?" Norman Serphos; "Seventy bucks," Bill; "Thirty five," N. S.; "Fifty," Bill; "Twenty five," N.S. "Forty," Bill; "Twenty," N.S. "Twenty five," Bill; "Ten," N. S.; "Oh heck, take it," Bill; "But I want a pair!"

SCANDINAVIAN POSTAL HISTORY

Order now for your free sample of our next international postal history catalog.

Four Auctions Yearly

Text in English

Postal history items from Finland, Åland, Sweden, Estonia and Russia. Special areas: ship mail, railroad mail, airmail, military mail, local mail, postmarks, revenues, etc. About 600 lots at each auction.

Auctioneer: Mr. Martin Holmsten, member SCC

Rurik Auctions

PB 432

FIN - 65101 VASA, FINLAND

TEL. 358-61-3177789, TELEFAX 358-61-3123046

Delaware Chapter 13 Auction Benefits Philately & SCC!

Back in 1968, our fledgling chapter was offered a large collection of Finnish Postal Stationery, on the condition that we prepare for and conduct an auction. Part of the proceeds would be given to the chapter if we accepted the challenge. Even though we had never done such a thing, several of our members had some experience in the philatelic auction field. So, with a bit of hesitation, we accepted the offer. Needless to say, that auction was a success, and it has become an exciting annual club project for the last 28 years.

After this first venture, we decided to continue our auction project and use the proceeds to benefit SCC and philately as a whole. We also found that auction preparation is an excellent learning tool for new and old members alike.

The funds generated each year have enabled our chapter to prepare and produce more than 25 slide shows on some aspect of Scandinavian Philately. Over

a dozen of these shows have been given to the SCC library.

In the early years, we advertised our lots in the *Scandinavian Scribe*. As the auction grew from 100 to 200+ lots we switched to the *Posthorn*, because it reached a larger audience. Now we've outgrown the PH as our auction features in excess of 350 lots. We have about 100 regular mail bidders, not to mention those who bid from the floor.

We are well underway preparing our 28th annual auction, which will take place June 25, 1996 in Wilmington, Delaware. If you are interested in receiving a copy of our auction catalog, send your name and address on a postcard to "Auction Catalog," PO Box 59, Rockland, DE 19732. Catalogs will be mailed in late May. Don't put it off or you will forget and miss out on all the goodies! Bidders and buyers in the past three years will automatically receive the 96 catalog.

— Bob Lang

DO YOU COLLECT SCANDINAVIAN STAMPS & POSTAL HISTORY? ARE YOU A SPECIALIST?

WHAT IS A SCHIFF "ESPECIALLY FOR SPECIALISTS"® AUCTION?

It's an auction designed with YOU in mind. Whether you are a buyer or a seller — each specialized area of collection is listed in a separate section, making it easier for BUYERS to locate lots of particular interest and for SELLERS to realize maximum exposure for their material.



CATALOGS	N. America Overseas	
	Address	Address
1 Year with Prices Realised	10.00	18.00
1 year Catalogs only	7.50	15.00
1 Catalog with realizations	1.50	2.50
1 Catalog Only	1.00	2.00

We invite you to consign individual stamps or covers, entire collections or estates — for unreserved Public Auction or Private Treaty Sale. WE ALSO PURCHASE OUT-RIGHT! Contact us first describing your material include your address and telephone numbers.

Jacques C. Schiff Jr., Inc.



195 MAIN STREET
RIDGEFIELD PARK, NJ, USA 07660
Phones (201) 641-5566 — From N.Y.C. 662-2777
Licensed & Bonded Auctioneers — Established 1947



Watermark Varieties on 5KR Gustaf V Medallions of Sweden

SCC member David A. Engdahl has done some work checking out the watermark varieties on the 5 kronor Gustaf V medallion issue of Sweden. Here is a tabulation of his findings:

Facit #78

- a. regular watermark, single crown
- b. inverted watermark, single crown
- c. portions of two normal crowns, displaced vertically
- d. portions of two inverted crowns, displaced horizontally

Facit #97 (1.98 surcharge)

- a. regular watermark, single crown
- b. inverted watermark, single crown
- c. portions of two normal crowns, displaced horizontally
- d. portions of two inverted crowns, displaced horizontally

Facit #98 (2.12 surcharge)

- a. regular watermark, single crown
- b. inverted watermark, single crown
- c. portions of two normal crowns,

displaced horizontally

d. portions of two normal crowns, displaced vertically

e. portions of two inverted crowns, displaced horizontally

Of course this tabulation does not consider the additional KPV markings found on some stamps.

Perhaps in response to a letter from Mr. Engdahl to *Facit* the "portions of two crowns" variety was included in the 1994-95 listings. In the most recent *Facit*, 1995-96, a valuation was placed on the "portions of two crowns" variety but there is no mention of the "inverted two crowns" nor the horizontal and vertical displacements.

Anyone who has made other watermark discoveries may write David A. Engdahl at 65 Sharon Drive, Rochester, NY 14626-2014 or at 52 Heath Aster Lane, Lehigh Acres, FL 33936-7351.

* S * C * C *

SCANDINAVIA

I have more than 20 years experience
in the business

And contented customers
throughout the world

*Please send for a free copy of my monthly
auction catalog*

OLOF LINDER

Box 12163, S-102 24 Stockholm, Sweden

Fax no int. + 468 653 27 95

ROMPEX '96 Annual Meeting

May 17—19, 1996

Our annual meeting will be at the Holiday Inn — John Q. Hammons Trade Center; I-70 at Chambers Road; Aurora, CO. This is the nearest convention hotel to the Denver airport. Hotel rates are \$62.00 for a single, \$72.00 for a double but you must ask for the ROMPEX 96 rate. Show organizers recommend making your reservations before May 1.

If you wish to exhibit, contact Robert E. Miller, 8117 Telegraph Drive, Colorado Springs, CO 80920-7169 soon. We are looking for both one frame and "regular" exhibits. The closing date is April 12. Let our exhibit

coordinator know what you're thinking so that we have an idea of how many SCC exhibits we'll be showing. He's Robert E. Paulson, 1261 Pine Ridge Circle, West, Unit D1, Tarpon Springs, FL 34689. Phone: 813-934-226227.

Luren reports that the drive time from Colorado Springs is just over an hour and sometimes better deals can be made through Colorado Springs.

Admission is \$3.50. Exhibitors will be provided guest badges. Let Bob Paulson know if you and your spouse will be there so that SCC guest badges can be made in advance.

* S * C * C *

Dues Are Due!



1996 Facit

\$38.95 Net Cost \$28.95*

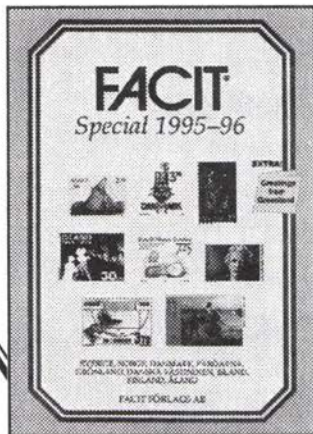
*The \$38.95 catalog comes with our bonus \$10 coupon toward a minimum \$50 new purchase from one approval selection from your want list.

- Free Greenland Maximum Card Set
- Complete English/Swedish text
- Call toll-free with VISA or MasterCard
- U.S. Orders \$38.95 Postpaid (book rate)
- Foreign orders add \$3.00 for surface mail. Airmail is extra.

To order call **1-800-447-8267** or
1-910-376-9991 Fax 1-910-376-6750

North American Distributor:

Jay Smith & Associates
P.O. Box 650-615
Snow Camp, NC 27349



SCC Bulletin Board

SFF reports that the **March 1996 Postiljonen** auction will include some very interesting **mail between a Swedish father near Gävle and his emigrant son** in Knox County, Illinois, with covers from 1868-1875 including contents.

This auction will also feature **G. A. Hagemann's collection of Danish West Indies in full sheets.**

Scandinavian POs on the Internet

Åland Post can be found at <http://www.posten.aland.fi/>

Finland: <http://www.inet.fi/posti/philat.htm>

Iceland: <http://www.simi.is/postphil>

These web sites have new issue information, color pictures, and brief info. I spent a little time on Åland's site and found background information regarding Åland's postal autonomy, subscription and order forms, new issue information, a three question quiz, etc. Downloading takes time in some cases (Finland seemed to be slowest). Printed information has not been replaced. If our readers have "URL's" for other Scandinavian PO's, please write the *Posthorn* editor.

Erratum

Don Brandt's *Walking into Iceland's Postal History* was reviewed in our last issue. An editing mistake left off Mr. Brandt's address and pricing information. This is a book your editor really enjoyed. Please note the book is available at DB-Books, Box 1269, IS-121 Reykjavík, Iceland. It is \$45 in US funds by surface mail and \$52 for airmail.

ICELAND SWEDEN

**LARGE
STOCK
including
the . . .
RARITIES**

*Send for my
FREE
PRICE LIST!*

KARL A. NORSTEN
Box 907, S-181 09
Lidingo, Sweden
Fax 011-46-8-731-0244

The Scandinavian Collectors Club

—*Founded, Nov. 25, 1935*—

Elected Officers

- PRESIDENT: Paul A. Nelson, PO Box 310, Claremont, CA 91711
 VICE PRESIDENT: Dr. Warren Pearse, 350 South River Landing Rd, Edgewater, MD 21037
 VICE PRES. FOR CHAPT.: Reino Merikallio, 388 West Road, New Canaan, CT 06840
 SECRETARY: Jared Richter, 1353 Plum St., San Diego, CA 92106-2549
 TREASURER: Howard Schloss, 261 Congressional LN #705, Rockville, MD 20852
 FOUR YEAR DIRECTORS: Glenn Hansen, 113-211 Watson St, Winnepeg, MB, Canada R2P 2E1
 Anders Melberg, 1426 Bristol, Westchester, IL 60154
 Robert Paulson, 1261 Pine Ridge Cir W, #D1, Tarpon Springs, FL 34689
 TWO YEAR DIRECTORS: David Anderson, 33780 Feldspar St. NW, Princeton, MN 55371
 Roger Quinby, PO Box 12606, Albany, NY 12212
 Wayne Rindone, PO Box 276, Newtonville, MA 02160-0276

Appointed Officers

- EXECUTIVE SECRETARY: Robert W. Lang, P.O. Box 125, Newark, DE 19715-0125
 HISTORIAN: Dr. Richard Collins St. Clair, PO Box 606, Cambridge, MA 02140-005
 LIBRARIAN: Dr. W. E. Melberg, Box 134, Allenton, WI 53002
 STAMP MART MANAGER: Eric Roberts, P.O. Box 460201 Galleria Sta., Houston, TX 77056
 CANADIAN MART MGR.: Roger Fontaine, 177 Crestwood Cr, Winnipeg, Manitoba Canada R2J 1H9
 APS REPRESENTATIVE: Jared H. Richter, 1353 Plum St., San Diego, CA 92106-2549
 PUBLICITY CHAIRMAN: Marvin D. Hunewell, P.O. Box 23959, St. Louis, MO 63119
 AWARDS CHAIRMAN: Ron Collin, PO Box 63, River Grove, IL 60171
 LITERATURE PROMO.: Alan Warren, P.O. Box 17124, Philadelphia, PA 19105

Member Services Coordinators

- EXHIBITION COORDIN.: Robert Paulson, 1261 Pine Ridge Cir W, #D1, Tarpon Springs, FL 34689
 COMPUTER COORDIN.: Paul Helgesen 34 Plymouth Road, White Plains, NY 10603-1129

Staff, *The Posthorn*

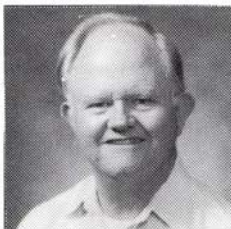
- POSTHORN EDITOR: John Lindholm, 2316 Lakeview Dr., Fergus Falls, MN 56537
 BUSINESS MANAGER: E. A. Menninger, PO Box 457, Lillington, NC 27546

Nation Editors & Resident Associate Editors

- POSTHORN COLUMNIST: Alan Warren, P.O. Box 17124, Phila., PA 19105
 CHAPTER NEWS EDITOR: Reino Merikallio, 388 West Road, New Canaan, CT 06840
 D.W.I. EDITOR: Dr. Roger G. Schnell, 4800 N.E. 20th Terrace, Ft. Lauderdale, FL 33308
 DENMARK & FAROES
 & GREENLAND EDITOR: Dr. Dan Laursen, 4901 East Eastland, Tucson, AZ 85711
 RESIDENT ASSOC.: Ingolf Nielsen, Reynstún 9, FR 160 Argir, The Faroes
 FINLAND EDITOR: Mike E. Hvidonov, 4 Dwight Lane, Great Neck, L.I., NY 11024
 ICELAND EDITOR: Bryan R.R. Whipple, PO Box 150150, East Ely, NV 89315
 RESIDENT ASSOC.: Sigurdur H. Thorsteinsson, Austurveg 9, IS-630 Hrisey, Iceland
 NORWAY EDITOR: Roe C. Blume, 10 Chestnut St., Wilmington, DE 19810
 RESIDENT ASSOC: Paul H. Jensen, Postboks 115 Kalbakken, N-0902 Oslo, Norway
 SWEDEN EDITOR: Paul A. Bergman, 875 Kenoza St., Haverhill, MA 01830

SCC Study Groups

- DWI STUDY UNIT Dr. Roger G. Schnell, Chairman (see address above)
 REVENUES: Tim McRee, Box 388, Claremont, NC 28610
 SWEDEN - RING TYPE
 STAMPS: George A. Kuhhorn, P.O. Box 4486, Emerald Isle, NC 28594
 FINNISH STAMP UNIT Roger Quinby, PO Box 12606, Albany, NY 12212



President's Letter

By Paul Nelson

Contributions to SCC Now Tax Deductible

The Scandinavian Collectors Club has been granted exemption from Federal Income Tax under section 501(a) of the Internal Revenue Code as an organization described in section 501(c)(3).

Our treasurer, Howard Schloss, has devoted many hours of his time during the last year to achieving this goal. Thanks go to Howard and to the other SCC leaders who participated in this effort. I'm including general quotes and a few paraphrases from the letter we received from the IRS in early February.

The final determination of our foundation status under section 509(a) of the code will occur later. However, the IRS states that the SCC can reasonably expect to be a publicly supported organization described in section 509(a)(2). The "advance ruling period", during which the SCC will be treated as a publicly supported organization, not as a private foundation, began on June 22, 1995, and ends on December 31, 1999.

Donors may deduct contributions to the SCC that were made in addition to dues. Contributions to SCC are deductible by donors beginning June 22, 1995. Those members who added a few dollars to their dues payment or who provided the SCC Librarian with donations of literature or of cash after that date may feel free to mention that on their Federal and State income tax returns for 1995. For example, those listed as donors in the Membership Report or the Library News may take a tax deduction.

Donors may deduct contributions to the SCC as provided in section 170 of the Internal Revenue Code. Bequests, legacies, devises, transfers, or gifts to the SCC or for the use of the SCC are deductible for Federal estate and gift tax purposes if they meet the applicable provisions of sections 2055, 2106, and 2522 of the Code.

Donations of property are to be valued by the donor, not by the recipient, SCC. The SCC will provide a receipt, of course. Ask your tax advisor if you have specific questions. A complete copy of the IRS letter is available from our treasurer, Howard Schloss, at his address shown at left. Please enclose a SASE, business size, with your request.

Who To Contact?

To become a member of SCC	Executive Secretary
To pay dues, To change address	
To place ads, make payments or rate inquiries	Business Manager
To submit articles or ideas	
General articles	Editor, <i>The Posthorn</i>
Individual country articles	Nation Editors
To form a new chapter	Chapter Coordinator
To get help for exhibiting	Exhibition Coordinator
To get help using computers	Computer Coordinator



News from the Home Office

By Bob Lang

It has been a busy fourth quarter as usual. We welcome twelve new members and one reinstated member to our midst. We did lose ten to resignations and five more left us for those "happy stamping clouds in the sky." All in all, 1995 was a bit of a disappointing year, as the following shows. We started the year with 948 paid and ended with 914. Let's hope we can make up some ground in 1996.

Membership Statistics for 1995

	1Q	2Q	3Q	4Q	Year
New Members	2	15	9	12	+38
Reinstated	4	2	4	1	+11
Resignations	1	6	1	10	-18
Deceased	2	8	2	5	-17
Dropped	0	48	0	0	-48
				Total Change	-34

Jim Nelson of Westlake Village, CA is our newest life member. Congrats to Jim! And many thanks to all those 35 members who saw fit to put a little extra in with their dues renewal. Their combined generosity netted almost \$400, which comes close to offsetting the lost income from our membership decline. Hooray!

The response to "Dues Renewal" notices has been excellent, with 75% in hand as of this writing. For those of you who have not responded yet, perhaps the arrival of your *Posthorn* will jog your memory. If not, you'll get one reminder postcard from me and that will be it. Tax Day (4/15) will be this year's drop dead date. So please take note and don't let it slide! Thanks for your promptness.

To more fun subjects; ROMPEX in Denver in lovely May. All reports so far are encouraging. We have 60 frames in the large exhibit category, but only five or six in the single frame competition. Our goals are 100 and 20 respectively.. Surely we can make the 20, and hopefully we can come much closer to the 100 number. Bob Paulson has done a yeoman job, give him a lift! First time exhibitors are more than welcome, especially single-framers.

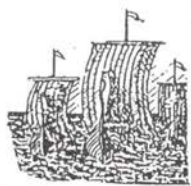
SCC will have an Awards Dinner on Friday evening, with a couple of BIG awards slated. 30 members will be inducted into the "Quarter Century Club." This is the biggest class yet. So if you joined in 1972 and have paid dues through 1996, you're in! See you there to collect your certificate. Saturday the Officers and Board meet for breakfast and later in the day SCC will have its annual meeting. Of course, Saturday evening is the ROMPEX Awards Banquet where the SCC Gold, Silver and Bronze Medals, plus the Joanna Sliski-Taylor Memorial Bowl will be awarded for the top Scandinavian Exhibit. It could be you!! I hear there will be several study group meetings as well. See you in Denver, May 17-19.

This summer plan to attend STAMPSHOW in August in Orlando; and lastly is the NORDIA '96 show in Reykjavik, Iceland in October. Hopefully SCC will be well represented there.

In closing, let me remind you that I have a supply of SCC Lapel Pins. They depict a Viking ship and are just \$5 postpaid if ordered from me. Cheers!

Scandinavian Stamp Mart

Eric Roberts, SCC Mart Manager



With all the new individual circuits available we are again running short on filled Mart books. The SCC Mart is the easiest way to sell your unwanted duplicates. We charge a commission of only 20% of all sales in Type "C" and "F" books and 15% for sales in Type "G" books with a \$3.00 minimum. There is no insurance and we do not charge you postage fees for return shipments of retired sales books.

New Mart books must have a minimum net (retail) value of at least \$35.00 per book (except Type "G" books which must have a minimum of \$200.00). We recommend you try and keep the minimum above \$50.00. Many collectors, old-timers and beginners, still need to get some of those minimum cataloged items. We encourage books with these stamps in them, but try and mix them with higher priced stamps also.

All material to be sold through the Mart must be mounted in special sales books which are available from the Mart Manager. Currently there are three types available.

Type C: 20 page, 500 space beige cover book available at \$0.45 each plus postage. Postage would be \$1.05 for up to five books. For stamps and covers having a total net value of between \$35.00 and \$650.00.

Type F: 16 page, 192 space blue cover book available at a cost of \$5.00 for 10 books postpaid. For stamps and cover having a total net value of between \$35.00 and \$650.00.

Type G: 15 page, 15 pocket book available at \$3.00 for 4 books postpaid. For stamps and covers having a minimum net value of \$10.00 each item or set and \$200.00 per book with a maximum net value of \$5000 per book.

We Need

We need all types of Scandinavian material. We especially need Iceland. We also need used postal stationery, locals, and booklets of all of Scandinavia. Covers always sell well and the Mart has an insatiable demand for unusual cancels, especially Iceland and Denmark stars. We have several requests for Scandinavian revenues and railroads and presently have mostly Finnish material only available.

Available

We have a nice book on Danish W.W.II encased postage available. We have nice books on Finish railroads, cinderellas, and revenues. We also have several nice books of Norwegian covers and stationery.

Mart address is: Eric Roberts, P.O. Box 460201, Houston, TX 77056. Telephone 713-963-0485 evenings or 713-575-5255 days.

Did You Know?

Åland Stamp Voted Most Beautiful

At NORDIA '95 visitors voted the Åland butterfly stamp, "the Silver-spotted skipper," the most beautiful Nordic stamp of 1994. All Nordic postal administrations took part in the contest.



Library News

Dr. W. E. Melberg, SCC Librarian

We have updated Chris McGregor's Faroes slide show (A&V 29) by checking through Thomas Høiland's auction catalogs and recording the descriptions. Now we have an accurate show that will prove to be of interest to the Chapters for their programs. As you will note in our listing, we have worked out a new program about Denmark, thanks to Walter Johnson's encouragement. These are two sets of 54 slides that cover parts of trips that we (the Melbergs) took in 1972, 74 & 79.

Library Donations - October 1, 1995 to December 31, 1995

Cash:

Russell Anderson, David Bennett, Raymond Erickson, John Germann, Howard Schloss, John Lindholm, Roberta Palen, Val Puzulis, Dr. Roger Schnell & Arnold Werner

Publications:

Matthew Bennett

FINLAND - THE ERNST NYGREN COLLECTION. Matthew Bennett Auction. Oct 1995. 84pp. Outstanding Finnish material with many color reproductions of items seldom seen.

Don Brandt

WALKING INTO ICELAND'S POSTAL HISTORY. Don Brandt. 1995. 239pp. Interesting philatelic stories about Iceland.

Ron Collin

ATLANTICA ICELAND REVIEW - The Icelandic Settlement in Canada 1875-1975. Many historical items are presented.

MYTHS & LEGENDS OF THE VIKINGS. John Lindow. 1979. 50pp.

David Engdahl

SWEDISH NUMERAL ISSUES OF 1872 TO 1891 "RINGS." Slide (43) show prepared by David Engdahl. Written commentary. The slides were copied using Library funds.

Harvey Gudmundson

SCANDINAVIAN REVIEW - Adrienne Gyongy, Editor. 10 volumes - Approximately 100 pp. each with articles about the Nordic countries. 1991-1994.

Stanley Hansen Estate

THE CHARLES H. JOHNSON COLLECTION. Pelander auction. 1949. 96pp.

SCANDINAVIA. THE J. ALFRED BIRCH COLLECTION. Robson Lowe Ltd. 1970. 70pp.

SCANDINAVIA. THE H.V. FARMER COLLECTION OF NORWEGIAN POSTHORN ISSUES. Robson Lowe Ltd. 1977. 16pp.

SCANDINAVIA. FIRST SECTION OF SVEND YORT COLLECTIONS. Robson Lowe Ltd. 1981. 92pp.

DE-NO-FIL. Oslo 1951. 105pp.

ARNØPHIL '76. København. March 1976. 66pp.

NORDPHIL '79. Hvidovre, Denmark. February 1979. 82pp.

HISTORIEN BAG DE TRE "HAFNIA 76" MINIATUREARK. Holger Philipsen. 1976. 18pp. Story about the background of the three miniature sheets of HAFNIA 76.

SPECIAL KATALOG 1969 - DANMARKS FLUORESCERENDE FRIMÆRKER. Jørgen Rasmussen. 1969. 92pp.

POST OCH TELEMUSEET EN VÄGLEDNING. Asko Kukkonen. 1973. 57pp. A guide to

the Finnish Postal Museum.

GREENLAND - STAMP CATALOGUE - SEMI-SPECIALIZED. E. Wowern. 1974. 39pp. Deals with the Pakke Porto issues.

SCOTT'S SPECIALIZED CATALOG OF UNITED STATES STAMPS. NINTH EDITION. 1932. H. Clark. 250pp.

ZENSURPOST AUS DEM III REICH. Karl Riemer. 1966. 83pp.

"*PAQUEBOT*" and "*SHIP LETTER*" - *CANCELLATIONS of the WORLD 1894-1951*. M. Studd. 1953. 85pp.

"*Norway No. 4.*" E. Rasmussen. CCP. 4/25. 10pp. An old interesting article about this stamp.

HÅNDBOK OVER NORGES FRIMERKER 1855-1955. DEL I 1855-1888. Norsk Filatelistforbund Redaksjonkomiteen. 1963. 312pp. Includes reprints of the first five Norwegian stamps.

HÅNDBOK OVER NORGES FRIMERKER 1855-1955. DEL II 1886-1955. Norsk Filatelistforbund Redaksjonkomiteen. 1966. 380pp. Includes reprints of six Norwegian stamps (1894, 1910, 1915, 1923, 1926, & 1930).

HÅNDBOK OVER NORGES FILATELISTIKA - Filatelistiske emner som tidligere ikke er behandlet i norske håndbøker. Norsk Filatelistforbund Redaksjonkomiteen. 1969. 312pp. Includes issues that were not covered in previous Handbooks.

EN BY OG EN BANK. J. Seland. 1967. 706pp. A history of *Farsund*, Stanley Hanson's ancestral hometown in Norway.

KATALOG OVER NORGES HELPOST. C. Pihl. 1954. 61pp. Catalog of Norwegian postal stationery.

NORWEGIAN - ENGLISH VOCABULARY. 18pp.

NORGES POSTSTEDER. POSTSTYRET. 1966. 100pp. Post office names.

DE NORSKE POSTSTEMPLER I TIDEN 1/1 1845 - 31/12 1854. T. Ahlström & F.C. Moldenhauer. 1965. 54pp. Norwegian cancellations during this period.

AUTOMATIC LETTER SORTING - OSLO. Undated. 31pp.

STANDARD FRIMÆRKE-KATALOG - 1947. 116pp. Scandinavian, French and German stamp catalog.

JULEMÆRKEKATALOG - CHRISTMAS SEALS. Aluma ApS. 1977. 58pp.

THE METER POSTAGE STAMP CATALOGUE. S. Barfoot & W. Simon. 14pp.

KATALOG VII ÖVER HANS LAGERLÖFS FRIMÄRKS DONATIONER TILL POSTMUSEUM 1940-1946. Nils Strandell. 1950. 185pp.

Thomas Høiland

FRIMÆRKEAUKTION. 16-17 November 1995. 240pp. Auction Catalog featuring Chris McGregor's outstanding Faroes collection, Karlo Lindskog's Greenland Parcel-Post, Flemming Hasle's rare Danish postmarks and two SØLLESTED imperforate stamps.

Gunnar Joos

FACIT SPECIAL 1995-96. Facit Förlags AB. 768pp. The latest of this outstanding Scandinavian catalog. Included, this time, are some of the latest stamps from Greenland.

Eric Kindquist

KATALOG ÖFVER SVERIGES POSTVÄRDETECKEN. H. Lichtenstein. 1894. 30pp.

Robert Lang

THE RUSSIAN EXPEDITION TO AMERICA. Sven Waxell. 1962. 190pp.

THE SCANDINAVIAN BOOK. Michelle Lampher, Editor. 1995. 38pp. Seven volumes from different section of USA. Many article about Scandinavia in the States with many promotional features of local firms. An SCC program to promote a membership drive.

Gary Little

"*The Faroes, Isles of Maybe.*" E. Bradford. Nat.Geo.Mag. 9/70. 32pp.

W.E. Melberg

STAMPING & STOMPING THROUGH DENMARK - 1971-1974-1979. 54 slides depicting stamps of Denmark along with slides that show actual scenes that the stamp represents.

(Two projectors are required for this presentation). A loose-leaf book will accompany this set. It has color reproduced pictures (large) of each slide. It was produced by SCC'er *Walter Johnson* and his company, *Duprin Copy Centre* of Woburn, MA. This is the same gentleman that has furnished the Library with enlarged copies of our forgery "stamps" all at no charge!

Gerhard Müller

GREENLAND - ISLAND OF THE ARCTIC. 80pp. The donor's great exhibit, that received a *GOLD MEDAL & RESERVE GRAND PRIZE* in MILCOPEX '95 in September 1995.

Postiljonen AB

THE NORDIA AUCTION # 159. Postiljonen AB. Oct 1995. 234pp. Features: Sweden - "DEFAS" - *SWEDISH POSTAL HISTORY 1858-UPU*. *Curt Haij* - "CANCELLATIONS ON SKILLING BANCO 1855-58". Finland - *Karl-Erik Stenberg* - *THE SPECTRUM OF FINLANDS EARLY POSTAL CANCELLATIONS*. *Eivind Evensen* - *GRAND DUCHY OF FINLAND*. *Roger P. Quinby* - *AUNUS, KARELIA & NORTHINGERMANNLAND*. Worldwide - *Tagge Buntzen* - "FIRST CENTURY OF PHILATELY" ALL WORLD 1840-1940. *Gunnar Joos* - *ERRORS ON STAMPS*.

Roger Quinby

Finnish Philatelic Journals.

Dr. Roger Schnell

CAPEX '96 - BULLETIN 1. 82pp.

Swedish Postmuseum

SVENSK POSTCENSUR UNDER ANDRA VÄRLDKRIGET. Ingemar Wågerman. 1995. 118pp.

Alan Warren

FILATELISTISK ÅRBOK 1987. Norsk Filatelistforbund. 160pp. The yearly book on Norwegian Philately. Depicts slogan and commemorative postmarks. The article listing is made available to members upon request.

FILATELISTISK ÅRBOK 1992. Norsk Filatelistforbund. 160pp. The yearly book on Norwegian Philately. Depicts slogan and commemorative postmarks. The article listing is made available to members upon request.

FILATELISTISK ÅRBOK 1993. Norsk Filatelistforbund. 160pp. The yearly book on Norwegian Philately. Depicts slogan and commemorative postmarks. The article listing is made available to members upon request.

FILATELISTISK ÅRBOK 1994. Norsk Filatelistforbund. 160pp. The yearly book on Norwegian Philately. Depicts slogan and commemorative postmarks. The article listing is made available to members upon request.

FILATELISTISK ÅRBOK 1995. Norsk Filatelistforbund. 160pp. The yearly book on Norwegian Philately. Depicts slogan and commemorative postmarks. The article listing is made available to members upon request.

Publications purchased:

GUIDE TO PERFIN EXHIBITING. S. Gersch & R. Schwerdt. 1995. 12pp.

FØROYAR 1995-96 - DAKA GF-10. E. Paaskesen & E. Wowern. 176pp. Latest book about Philately of the Faroes. Catalogs and prices all stamps, cancellations and markings. Obtained from **Lizabeth Stamp Co** at a special library rate.

INSIDE GUIDES ICELAND. Hans Höfer. 1993. 369pp. Informational book about Iceland.

BOGEN OM DANSKE SKILLINGSBREVE 1851-1874. Ole Steen Jacobsen. 1995. 160pp. (64 in color). A beautiful book with an English summary and content outline. This is a publication that the student of Danish postal history has been looking forward to for many years. Includes all rates for the Skilling period for most countries plus it explains many of the cancels and markings found on many of the early letters. It has a ton of information not found elsewhere, for example, charts as to when Danish waterways froze over so the mail had to be transported over the ice and also currency comparison lists between most countries. Worth a look. Purchased from **Jan Bendix (SKILLING)** at a special library rate.

DEN TYSKE MARINENS FELTPOSTTJENESTE I NORGE 1940-1945. Torbjørn Larsson-Fedde. 1995. 44pp. History of German sailors in Norway during World War II. Lists numbers and locations of bases. Purchased at special library rate from **F.C. Moldenhauer**.

DEN NORSKE POSTKONTROLLEN UNDER FØRSTE DEL AV DEN ANNEN VERDENSKRIG. John Torstad. 1995. 160pp. Postal control history of Norway during the first part of World War II. Purchased at a special library rate from **F.C. Moldenhauer**.

SCC Chapters — Meeting Times/Places and Contact Address

4. CHICAGO: 4th Thursday (except July and August) at Golden Flame, 6417 W Higgins. MAIL ADDRESS: Ron Collin, PO Box 63, River Grove IL 60171-0063

5. NEW ENGLAND: First Wednesday at The Swedish Home, 206 Waltham St, West Newton, MA at 7:30 in the Board Room. MAILING ADDRESS: Wayne Rindone, PO Box 276, Newtonville, MA 02160

7. NEW YORK: 2nd Wednesday (except July and August) at The Collectors Club, 26 E 35th St. MAILING ADDRESS: George Ganim Jr, c/o Sydney & Ganim, 122 E 42 St, NY, NY 10168

9. NORTHERN NEW JERSEY: 3rd Wednesday at members' homes. MAILING ADDRESS: Warren J. Grosjean, 32 Juniper Rd, Wayne, NJ 07470

12. WASHINGTON, DC: Meets at major stamp shows throughout year. MAILING ADDRESS: Mrs. Randi Selehdar, 9313 Langford Court, Potomac, MD 20854

13. DELAWARE: Last Tuesday at members' homes. MAILING ADDRESS: Robert D. Lipscomb, PO Box 59, Rockland, DE 19732

14. TWIN CITIES: 2nd Thursday (except July and August) at Lynnhurst Community Center 50th St. and West Minihaha Parkway, Minneapolis. ADDRESS: Ross Olson, PO Box 23377, Richfield, MN 55423

15. ROCHESTER: 1st Monday at Robert Gustafson's home. MAILING ADDRESS: Robert Gustafson, 877 Helendale Rd, Rochester, NY 14609

17. SOUTHERN CALIFORNIA: 1st Wednesday at Glendale Federal Bldg, 13300 Ventura Blvd, Sherman Oaks. ADDRESS: Paul Nelson, PO Box 310, Claremont, CA 91711

21. GOLDEN GATE: Meets at major stamp shows throughout year. MAILING ADDRESS: Thomas Olson, 4 Woodmont Court, Berkeley, CA 94708

22. HOUSTON: 1st Tuesday evening of even numbered months at law office of George Sellnau; varying Sunday afternoons of odd numbered months at stamp dealer shop of Mary Jane Menzel. MAILING ADDRESS: Eric Roberts, PO Box 460201, Houston, TX 77056

23. WEST COAST: 3rd Monday, 6:00 PM at "Kissin Cousins" restaurant, on US 19 North, Clearwater. ADDRESS: Robert Paulson, 1179 Pine Ridge Cir. W. #A1; Tarpon Springs, FL 34689

24. WINNIPEG: 2nd and 4th Wednesdays at Scandinavian Cultural Centre, 764 Erin Street. ADDRESS: Glenn Hansen, 113-211 Watson St., Winnipeg, MB R2P 2E1

25. TUCSON: 4th Tuesday (except July and August) at members' homes. MAILING ADDRESS: Jack F. Schmidt, 805 W. Hermosa Pl, Green Valley, AZ 85614

26. TIDEWATER: Meets at stamp shows and members' homes throughout the year. MAILING ADDRESS: Michael Falls, 575 Virginian Drive, Norfolk VA 23505-4242

Chapter Coordinator: Reino Merikallio, 388 West Rd, New Canaan, CT 06840



Chapter News

By Reino Merikallio

Basic Chapter Activities

All of the SCC chapters engage in some or all of the following rewarding and enjoyable activities: sharing philatelic information, purchasing stamps and covers from SCC Mart books, buying, selling and trading materials, hearing talks by chapter members or by visiting speakers, watching slide shows and examining copies of award winning exhibits. If you don't belong to an SCC chapter please consider joining one in your area or forming a new chapter with other nearby Scandinavian collectors. See Chapter Contacts for information on chapters. Please contact me if you would like to help in starting a new chapter.

Chicago Chapter 4 News

It's been a while since *Posthorn* readers heard from the great Midwest. Our April meeting had a neat slide show produced by our old standby, Bob Lipscomb of Chapter 13: *Private Local Posts of Denmark*. May centers on the annual COMPEX show. Dr. Warren Pearce took the grand prize of an Orrefors crystal bowl with his great DWI exhibit. This presentation was balanced with one & two framers of our Chapter 4 members.

The annual Wisconsin Picnic started by the late Howard Bauman was held in July with good weather, food and camaraderie. Twenty were in attendance. A potpourri of summer acquisitions kept our group's attention in September. Our members proved that there is still some good items to be found. Frank Correl's *Slesvig* slides and commentary kept our group entranced for the October meeting. Here's a program that everyone should try. Norm Andrews twisted our minds and our arms, as only he can do, in December with our winter auction. The SCC Library reaped a few dollars through that effort. — Doc Melberg

New York Chapter 7 News

A TV film on Iceland philatelic activity was featured at one monthly meeting. We anticipate viewing more films. — Reino Merikallio

Washington D.C. Chapter 12 News

The last meeting of Chapter 12 took place November 21 at the McLean Community Center on Chain Bridge Road in Virginia. There was a slide show presentation of Scandinavian forgeries and a challenging philatelic quiz. Our next major meeting will be in conjunction with Springpex in Springfield, Virginia. — Howard Schloss

Delaware Chapter 13 News

It's hard to believe that our chapter has met continuously each month for 29 years! Yes, we're starting our 30th year and still as active as can be. The pace slows a little, as most of us are retired now, and things don't get accomplished quite as fast as they used to. In July we gathered at Joe Davis's to see how we could set up a slide show on Swedish Rates on Cover for the Skilling and early Öre issues.

We greeted a new member in September. Roger Sollie of Flourtown, PA joined us at Whitey Bro's for an interesting video on early Viking crossings of the Atlantic. In October Bob Lipscomb hosted the group for a screening of an updated slide show about Viking Art. November featured a presentation by Harry Themal and Curt Patterson on a catalog they have been preparing of the First Day Covers of the 1938 Tercentennial Issues of the USA, Finland and Sweden commemorating the Landing of the Swedes and Finns in America. We missed Bob Lipscomb's presence as he was in the hospital awaiting bypass surgery.

Roy Ferber hosted our annual holiday bash. We were lucky to gather at the Dupont Country Club on the night *before* the Blizzard of 1996 to see slides and hear first hand about Mark Manno's recent trip to Uzbekistan and Kyrgyzstan to assist high school students

organize 4-H clubs in that remote part of the world. Fascinating.

— Bob Lang

Twin Cities Chapter 14 News

After a breather this past summer, Chapter 14 resumed its schedule of meetings in September. A number of the members meet at a local restaurant prior to each meeting for dinner and noisy conversation.

The first meeting featured a slide show on Iceland foreign cancels. A follow-up slide show in November covered the domestic cancels of Iceland. Danish West Indies was the topic in January, 1996. Our annual stamp show, Snowpex, celebrated its 20th anniversary on the week-end of January 20 and 21. We feature one Scandinavian country each year and this year it was Denmark's turn. The cacheted cover pictured the Danish flag, and the show program contained information on the country. The bourse had 24 dealers and seven members contributed 16 frames of exhibits.

— Ross V. Olson

Rochester Chapter 15 News

The Rochester Chapter continues meeting monthly in Bob Gustafson's home, enjoying conversations. The December meeting featured a Scandinavian feast of eats.

Southern California Chapter 17 News

Chapter 17 continues to meet on the first Wednesday night of each month at 13300 Ventura Boulevard, Sherman Oaks. The name of the bank has changed from Union Federal Bank to Glendale Federal Bank. Nothing else has changed! Visitors are always welcome. Plans are now being made for some of us to attend the SCC National Meeting at ROMPEX in Denver in May. Our spring mail sale will be held in May or June; drop a note to PO Box 310, Claremont, CA 91711, for a copy of the sale list.

— Paul Nelson

West Coast Chapter 23 News

Our dinner meetings are attended by 12-16 people. We have prospects for two new members. May will be our 100th consecutive meeting since forming the chapter in 1988.

Recently, Ernie Smedegaard has provided several interesting topics about Scandinavia, having lived in Denmark for a number of years.

— Robert Paulson

Specialized Scandinavia

For twenty-five years we've been helping to build collections through our monthly lists of Scandinavian specialty material: covers, booklets, locals, stationery, seals, literature, and sometimes even ordinary stamps. If you're looking for the unusual, at pleasingly reasonable prices, we could be your source. Let us hear from you, because you'll enjoy our lists (we're told they make interesting reading) and may find some items you need.

FAROE ISLANDS New Wowern Catalog

For the first time in five years, there's a new edition of the Wowern Faroe Islands catalog, the comprehensive reference for all aspects of Faroe philately. Published November 9, it's fully illustrated and in English as well as Danish.

\$33.50

Lizabeth Stamp Company

P.O. Box 321

Bloomsburg, PA 17815

Membership Report

Membership Statistics for the Fourth Quarter Ending December 31, 1995

New Members

- 3581 EWING, SCOT F., 2505 McArthur Street, Lakeland, FL 33801
Scandinavia (incl Town Cancels), Fin, Den, Nor Postal History
- 3582 HANSEN, ALFRED, 1035 Whitwell Road, Hillsborough, CA 94010
DENMARK, SCANDINAVIA
- 3583 SOLLIE, ROGER S., 6321 Sunnybrook Road, Flourtown, PA 19031
Norway, USA
- 3584' BOATRIGHT, DR. KHWAWA P., P.O. Box 43576, Tucson, AZ 85733
Iceland, Greenland, Ottoman Empire, Turkey, Tibet
- 3585 MANHART, JAMES R., 2910 Pueblo Court S., College Station, TX 77845
Scandinavia, Japan, Western Europe
- 3586 REHKOP, THOMAS G., P.O. Box 1013, Fenton, MO 63026
Scandinavia, Germany, Hungary By: Hunnewell 1561
- 3587 ROSSKAMM, JACK, 2750 Windjammer Road, Suffolk, VA 23435
Scandinavia, Germany, USA
- 3588 WIITA, OLIVER O., 11436 SE 208th St., Space 109, Kent, WA 98031
Scandinavia, Canada, USA & Ducks
- 3589 BROWN, MALCOLM L., 2148 University Park Drive, Sacramento, CA 95825
Scandinavia By: Chapter 21
- 3590 BERG, HARVEY N.JR., 4145 Joan Drive, Dorr, MI 49323
Sweden, Scandinavian Lighthouses
- 3591 NAZZARO, FREDERICK, 24 W. Woodcrest Drive, Melrose, MA 02176
Scandinavia, Baltic States, British Colonies
- 3592 GOULD, LEONARD A., 7 Wainwright Road, Unit 108, Winchester, MA 01890
Western Europe including Scandinavia, Greece, Switzerland, Great Britain

Reinstatements

- 3485 YANKUS, WILLIAM J., P.O. Box 148, Slinger, WI 53086 - From 1995 Drop List

Regular Roll to Life Membership

- L86/3445 NELSON, JAMES A. of Westlake Village, CA 91361

Resigned

- 3528 MONSON, JOHN C. - Member since 1994
- 2215 GERGORY, JOHN D. - Member since 1979
- 1022 ARCH, BRAD - Member since 1964
- 3384 MILLER, CHARLES - Member since 1992
- 2731 WILHELM, JOHN - Member since 1983
- 3476 FURRY, FRANK - Member since 1993
- 2751 VAN DAM, THEO - Member since 1983
- 3371 JOHNSON, ORA T. JR. - Member since 1991
- 3046 LOHSE, BEN - Member since 1987
- 3534 VACCAREZZA, FABIO - Member since 1994

Deceased

- 3356 NYMAN, MELVIN A., Libertyville IL - Member since 1991
- 0829 BROWN, HAROLD C., Naples, FL - Member since 1958
- 1677 LUNDBERG, JOHN P., Anaheim, CA - Member since 1972
- 3449 TIEGEN, RICHARD C., Santa Barbara, CA - Member since 1993
- 1425 PARKER, C. ANGUS, London, England - Member since 1971

Donations: SCC is grateful to the following for making generous contributions!!

- | | | |
|-------------------------|------------------------|------------------------|
| 1921 BELL, JONATHAN | 2949 CROWN, JEFFREY | 2291 RIGNEY, JAMES |
| 3226 BENNETT, DAVID | 3532 DEDRICKSON, JAMES | 2739 ROBINSON, MICHAEL |
| 2403 BJORKLUND, HERBERT | 1462 DEISZ, GEORGE | 2067 RUNNING, JOSEPH |
| 0045 BLINN, CHRISTINE | 1982 GUYER, JOHN | 1956 SCHLOSS, HOWARD |
| 1993 BLUME, ROE | 1645 HAGUE, BENJAMIN | 1545 SICKELS, GEORGE |
| 0670 BOSTWICK, GEORGE | 1700 HOLBROOK, JOHN | 1714 SMITH, WILLIAM |
| 1764 BRANDAL, OLE | 2803 LORENTZEN, LARS | 3294 SVENSSON, ERNEST |

2252 CARLSON, CHARLES 0821 LUDDEN, DAVID 2731 WILHELM, JOHN
 L-02 CHRISTENSEN, B. I. 2869 MAWHINEY, MICHAEL 2828 WIRTA, ALLEN
 3344 CICHORZ, ROGER 2761 OFJORD, OTTO 3067 WOLFEL, WILLIAM
 2661 PUZULIS, VAL

Can anyone help me find a new address for this LOST MEMBER?

2890 NYGREN, RAYMOND A. Last known address: Box 68366, Oak Grove, OR 97268

Change of Address

1636 PAULSON, ROBERT E., 1261 Pine Ridge Cir., West #D1, Tarpon Springs, FL 34689
 2179 NIEMIAHO, RANOLD, 233 Fourth Ave., Unit 5 T.H. 513, Sudbury, Ont P3B 4C3
 2993 YOUART, BILL, HC 72, Box 175, Stephenport, KY 40170
 3218 MESSERCHMIDT, PETER, 15187-B SW Walker Road, Beaverton, OR 97006
 2814 ANDERSEN, ALAN W., P.O. Box 3498, Incline Village, NV 89450
 L-42 BENSON, HOWARD, 7931 S. Broadway #286, Littleton, CO 80122
 2962 BJORK, TORBJORN, 4247 N. 68th St., Scottsdale, AZ 85251
 3444 BRAATEN, RICHARD F., 3649 Rippleton Road, Cazenovia, NY 13035
 L-83 KRIZ III, JOHN J., 1370 Ponus Road, New Canaan, CT 06840
 3243 NYBORG, WILLIAM A., 113 Elm Avenue, Haddonfield, NJ 08033
 1852 YOZELL, STEPHEN JAMES, 1105 Turnstone Dr., Rocky Mount, NC 27803
 3491 SUNDERLAGE, SEAN A., 26 Marietta Place, Alton, IL 62002
 3083 SPARKS, ARTHUR J., 621 Forest Hill Drive, Kingston, Ont. Canada K7M 7N6
 1932 SORENSEN, DR. LEIF B., 1700 E. 56th St., Apt. 2801, Chicago, IL 60637
 0383 BROWNLYER, BURT W., 2405 Windward Lane #405, Gainesville, GA 30501
 1606 WINICK, LESTER, 1501 E. Central Road, Apt. 101, Arlington Heights, IL 60005
 2879 GLOBALIA INT'L, Kystvegen 27, DK-9850, Hirtshals, Denmark
 3365 MELBERG, JAMES K., 158 12th Street SE, Washington, DC 20003
 3455 DAHILL, LOISELLE, 2378 NW McDougal Court, Prineville, OR 97754
 L-78 JARDINE, NEIL J. PO Box 56839, Sherman Oaks, CA 91413
 2464 JENSEN, PETER, 72-3260 East 58th Avenue, Vancouver, BC V5S 3T3 Canada
 1542 JENSEN, PAUL H., P.O. Box 2818 Solli, N-0204 Oslo, Norway
 1201 HALPERN, DONALD F., P.O. Box 930, New Providence, NJ 07974
 2227 MOORE, JERRY D., 741 W. Creek Bend Dr. #2811, Salt Lake City, UT 84119
 2728 JOHANSEN, DR. ERIC, Gutfeldtsvej 9, DK-2970 Horsholm, Denmark
 L-61 ODEGAARD, JAN, Madlaveien 8, N-4008 Stavanger, Norway
 2138 ALBERTSON, LAWRENCE, P.O. Box 2108, Alachua, FL 32615

Membership Summary for Quarter Ending December 31, 1995

Current Total Paid	914	Total Paid Last Report	917
Honorary	8	Changes	4Q95
Life	63	New Members	+12
Golden Life	11	New Golden/Life/Honorary	+1
Regular	827	Reinstated	+1
Subscriptions	5	Adjustments	-1
Total Paid	914	Regular to Life	-1
Courtesy & Exchange	32	Resignations	-10
SCC Staff & Library	70	Deceased	-5
Total PH Copies	1016	Members Dropped	0
		Total Change	-3

* S * C * C *

Did You Know?**Nordica Named Åland US Agent**

Åland Post has entered into an agreement with Nordica Inc. concerning the sale and marketing of Åland stamps and other philatelic products in North America. Nordica is also the agent for Finland, Denmark, the Faroes, Greenland and Iceland. The address is: PO Box 284, Old Bethpage, NY 11804; phone/fax (516)931-3485. Of course, you can still do business with Posten på Åland, PO Box 100, FIN-22101, Mariehamn, Åland, Finland.

Membership Exchange

If you are looking for pen pals, stamp exchanges, obscure information, or a way to sell extra material we will print FREE MEMBER-TO-MEMBER "ADS" on a "space available" basis with minor editing as necessary. Try to be brief — 40 words or less is best, SCC and the *Posthorn* cannot be held responsible for stamp exchanges. Use good judgment.

Submit requests to the Editor. (Dealer members will not be eligible for gratis ads, but can purchase M-T-M space at the rate of 20 words for \$2. (minimum) plus 10¢ per additional word. Contact our Business Manager listed on the Contents Page.)

WANTED: Swedish Post Office **Information Bulletins, Nya Frimärken** cards, 1968-1983. K.J. Radley, 16 Forbes Ave, Kanata, Ontario; K2L 2L8; Canada (3556-3)
* S * C * C *

Wanted: **Iceland Postal Stationery**, mint FACIT. Single 7,10,33, Double 9,10,23 Robert Frigstad, 2181 Lakeaires Blvd., White Bear Lake, MN 55110 (L25-3)
* S * C * C *

Wanted: **Norway** Postal stationery mint — Pihl 7, 33, 47, 52 Robert Frigstad, 2181 Lakeaires Blvd., White Bear Lake, MN 55110 (L25-3)
* S * C * C *

Recent local commercial mail available from the **Faroës and Åland**. Prices start at \$2 each, you pay shipping. Please write/fax for details. Steven Zirinsky, PO Box 49, Ansonia Station, NY, NY 10023. Fax 718-937-5515 (D1,P3)
* S * C * C *

Wanted: **Minkus Specialized Scandinavian Album binders**, 2 post. No pages needed. C.L. Thurman, Dept. of Biology, University of Northern Iowa, Cedar Falls, IA 50614-0241. (319)273-2276. (2479-3)
* S * C * C *

Correspondent (in English ok) & **Trade wanted** Joris Luypaert, 13 years old, collects used USA, Canada and Iceland. Son of Ronny Luypaert, Kerkomstraat 18, B- 3300 Kuntich, Belgium (3385-3)
* S * C * C *

Need Iceland TOLLUR and ORLOF marks on Chr X 10 aur, Facit 131,132, 151 on connected ME or dot in UR "C" Alfred Gruber, PO Box 1073, Newark, DE 19715 (1049-3)
* S * C * C *

Wanted: **Iceland Postal Cards** Facit mint: Singles 13,33. Facit used: Singles 7,10,24,15,33,34 Doubles BK 2,7,24. Mint or used: Printed Matter card showing ship cachet. Gordon C. Morison, PO Box 59305, Potomac, MD 20859. (3242-1)
* S * C * C *

Wanted: **Scandinavian exchange partners**. I offer Canada mint/used for your used. Joseph F. Wood, 579 Westmorland Road, Saint John, NB E2J 2G8; Canada (2579-2)
* S * C * C *

Scandinavian Philatelic Literature: Books in English about Norwegian, Swedish, Finnish and Danish stamps as well as specialized catalogs, revenues and cancellations, published by the Scandinavian Philatelic Foundation. SPF members receive discounts. For membership information and a price list write to George B. Koplowitz, Box 6716, Thousand Oaks CA 91359 (D-1)
* S * C * C *

I collect Scandinavian Frama stamps (labels). Please drop me a line and I'll write back. Thank you. Harv G. Gudmundson, 707 Greenwood, Glenview, IL 60025 (945-1)
* S * C * C *



AUCTIONS 1996

in Malmö



PRE NORWEX AUCTION
March 22-23, 1996

International Auction in Malmö. With "Two-room Auction" of Norway Special in cooperation with OFM, Oslo.

POST ISTANBUL AUCTION
October 11-12, 1996

With forceful international marketing. Promotion at ISTANBUL 96.

We feel sure that both events will be great philatelic feasts, and do hereby invite you to take part as consigners. Please contact us today for a discussion about your material, an early consignment will allow us to include your material in our international pre-catalogue marketing.

POSTILJONEN AB



Box 4118, S-203 12 Malmö, SWEDEN
Telephone Int. +46 40 72290
Fax Int. +46 40 72299

The auction house in Scandinavia



223
27

THINKING OF SELLING?

We Offer 3 Distinct Alternatives

PUBLIC AUCTION Through public floor auctions, your stamps reach the broadest possible audience in a positive selling environment. The price you realize will be determined by open market bidding, not private negotiation. Our illustrated auction catalogs and broad customer base insure that your stamps are attractively presented to active buyers in the United States and overseas.

Ask about our new commission structure for sellers . . . now as low as 5% for larger properties.

PRIVATE TREATY Specialized collections, in particular, must be presented in the proper way to other specialists in order to maximize the price realized. You set the price. We then inform selected customers of the property and endeavor to sell it within 90 days.

IMMEDIATE CASH We constantly buy and sell stamps in the normal course of our business and need to acquire collections as well as better stamps and covers from all Scandinavian countries. We provide frank evaluations and IMMEDIATE PAYMENT IN FULL for all acquired material regardless of size.

Call Toll Free 1-800-950-0058

in NJ 1-201-746-7982

FAX 1-201-403-2601



NORTHLAND CO.

BOX 34 • VERONA, NJ 07044

Scandinavia Exclusively . . . Since 1975

