



The

POSTHORN

February 1999

Philatelic Postage Due Covers of the Danish West Indies





Scandinavia

- Building fine collections for exhibition, research, and enjoyment. Offering approvals from your specific want list or a description of your specialized interests.
- Offering complete private treaty services for your Scandinavian material.
- Active buyer of complete collections or individual items. High prices paid; with immediate cash payment. Avoid the delays and uncertainty of auctions. I have many customers for your good material.
- Providing over 400 titles of philatelic literature and catalogs for the Scandinavian collector.

Call toll-free 1-800-44-STAMP (1-800-447-8267)

Phone: 336-376-9991 Fax: 336-376-6750
email: jay@jaysmith.com

The Scandinavian Specialist since 1973

Jay Smith

P.O. Box 650-SCC Snow Camp, NC 27349 USA



The
POSTHORN

Official Publication of the SCANDINAVIAN COLLECTORS CLUB
Published Quarterly Since 1943

Vol. 56, No. 1

February 1999

Whole No. 218

TABLE OF CONTENTS

Philatelic Postage Due Covers of the Danish West Indies	John L. DuBois	3
Swedish Charta Sigillata of 1845	LeRoy W. Ferber	11
Scandinavian Mail through the Lübeck Post Offices	Don Halpern	15
The London Issue of Norway	Frederick A. Brofos	18
German "A" Censor Mark Update	Henk P. Burgman	21
The Euro and Scandinavian Philately	Alfred Gruber	23
Love Letters in Copenhagen	Dr. Dan Laursen	25
Denmark "Via America" Mail	Viktor A. Sten	26
SCC Convention at Balpex	Alan Warren	26
SCC at Chicagopex	Alan Warren	27
Bob Lang Receives Pelander Award	Alan Warren	30
Regional Meeting at Rompex		33
1998 Articles Index		45

DEPARTMENTS

Album Closed	45	President's Letter	33
Editor's Notes	44	Scandinavian Area Awards	37
Library News	38	Scandinavian Literature Notes	35
Membership Statistics	42	Transfers and Re-Entries	37
News From The Home Office	41		
Nordia 2001 Update	40		

The Posthorn (ISSN 0551-6897) is published quarterly by the Scandinavian Collectors Club, 102 S. Main St., Madrid IA 50156. Membership, including subscription, \$15 per year, \$21 for addresses outside North America. Contact Executive Secretary for membership and change of address. Advertising rates and terms available from Business Manager. Periodical postage paid at Madrid, IA 50156.

POSTMASTER: Send address changes to *The Posthorn*, SCC Executive Secretary, PO Box 13196, El Cajon, CA 92020.

COPYRIGHT 1999 Scandinavian Collectors Club.

Affiliate 79, American Philatelic Society
Affiliate, Royal Philatelic Society of Canada

Printed in USA
(USPS 603680, ISSN 0551-6897)

THE POSTHORN

A Journal of Scandinavian Philately

THE POSTHORN STAFF

EDITOR: Sandra Downs, PO Box 477, Imperial PA 15126-0477

NATION EDITORS & RESIDENT ASSOCIATE EDITORS

COLUMNIST: Alan Warren, PO Box 39, Exton PA 19341-0039

D.W.I.: Dr. Roger G. Schnell, 4800 NE 20th Ter, Ft. Lauderdale FL 33308

DENMARK, FAROES, GREENLAND EDITOR:

Dr. Dan Laursen, 4901 E Eastland, Tucson AZ 85711

RESIDENT ASSOC: Ingolf Nielsen, Reynstun 9, FR 160 Argir, The Faroes

ICELAND EDITOR: Bryan R.R. Whipple, Box 259, Cazadero, CA 95421-0259

RESIDENT ASSOC: Sigurdur H Thorsteinsson, PO Box 26, IS-222 Hafnarfirdi, Iceland

NORWAY EDITOR: Roe C. Blume, 10 Chestnut St, Wilmington DE 19810

RESIDENT ASSOC: Paul H. Jensen, Postboks 115 Kalbakken N-0902 Oslo, Norway

SWEDEN EDITOR: John Lindholm, 2316 Lakeview Dr, Fergus Falls MN 56537

FINLAND EDITOR: Roger Quinby, PO Box 738, Clifton Park NY 12065

Contributors are asked to send their submissions to the appropriate editor. Online? Send information by email to <sdowns@premiertechnologies.com>. Submissions should be typed double-spaced and/or submitted as word processing documents on IBM-compatible disk (WP 5.0 or greater, Word 6.0 or greater). Color photos or crisp photocopies of illustrative materials are preferred. Please include bibliographical references when possible. Unless otherwise requested, submitted materials may be reproduced on the SCC website.

Statement of Ownership, Management, and Circulation (Required by 39 USC 3685)

1. Publication title: *The Posthorn*
2. Publication No: 603680
3. Filing date: Sep 15, 1998
4. Issue frequency: Quarterly
5. No. of issues published annually: 4
6. Annual subscription price: \$15.00
7. Complete mailing address of known office of publisher (not printer):
Donald B. Brent, PO Box 13196, El Cajon, CA 92020
8. Complete mailing address of headquarters or general business office of publisher (not printer): Donald B. Brent, PO Box 13196, El Cajon, CA 92020
9. Full names and complete mailing address of publisher, editor, and managing editor:
Publisher: Donald B. Brent, PO Box 13196, El Cajon, CA 92020
Editor: Sandra Downs, 120 Old Gate Rd, Level Green PA 15085
Business Manager: Ed Menninger, PO Box 457, Lillington NC 27546-0457
10. Owner: Scandinavian Collectors Club, PO Box 13196, El Cajon, CA 92020
11. Known bondholder, mortgagee, and other security holders owning or holding 1 percent or more of total amount of bonds, mortgages, or other securities: none
12. Tax status: Has not changed during preceding 12 months
13. Publication title: *The Posthorn*
14. Issue date for circulation data below: Aug 1998
15. Extent and nature of circulation

	Average no. copies each issue during preceding 12 months	Actual no. copies of single issue published nearest to filing date
A. Total no. copies (net press run)	1000	1000
B. Paid and/or requested circulation		
1. Sales through dealers and carriers, street vendors and counter sales	0	0
2. Paid or requested mail subscriptions	808	806
C. Total paid and/or requested circulation	808	806
D. Free distribution by mail	0	0
E. Free distribution outside the mail	151	151
F. Total free distribution	151	151
G. Total distribution	959	959
H. Copies not distributed		
1. Office use, leftovers, spoiled	41	47
2. Returns from news agents	0	0
I. Total	1000	1000
Percent paid and/or requested circulation	81%	81%

16. Publication of Statement of Ownership is required and will be printed in the Feb 1999 issue of this publication.
17. I certify that the statements made by me above are correct and complete.

 
 (Signature and title of editor, publisher, business manager, or owner)

PHILATELIC POSTAGE DUE COVERS OF THE DANISH WEST INDIES

John L. DuBois

Covers bearing "CENTS" issue postage due stamps of the Danish West Indies are scarce postal history items. The *DWI Record* (a comprehensive census of DWI material maintained by the SCC DWI study group) contains only 92 entries for covers known with any of the four denominations of these stamps (Table 1). A few more probably exist which have not been cataloged in the census, but it is not likely that more than 150, at the most, have survived.

DENOMINATION	RECORDED COVERS
one-cent	39
four-cent	23
six-cent	13
ten-cent	17
Total	92

Table 1: Covers in the DWI Record bearing DWI "CENTS" issue postage due stamps. There are fewer than 92 separate items because covers bearing more than one stamp are counted once for each denomination.

The "CENTS" postage due stamps were issued between 1901 and 1904 in four printings. A total of 230,300 were printed, but not all were delivered to DWI post offices and 60,700 were burned after new stamps (the "BIT" issue) replaced them in 1905. No more than 169,600, then, could possibly have been used. However, this number, about 3500 a month, would have been an improbably high postal requirement. It is something of a minor mystery what happened to all these postage due stamps, but the small number of surviving covers suggests that only a fraction were used.



Figure 1. The "CENTS" issue postage due stamps of the Danish West Indies.

In view of these facts, it is not surprising that "CENTS" issue postage due covers are highly prized and sought out for DWI postal history exhibits. Auction realizations for such covers range from a few hundred to over a thousand dollars, with retail prices even higher. In view of their scarcity and value, it is important for collectors to be aware of a negative factor bearing on the quality of this material-- over one third of the recorded covers are philatelic in nature.

Of course, the definition of a "philatelic cover" is not uniform among collectors and can be controversial. For the purpose of this article, we mean by "philatelic" that a cover appears to have been prepared *primarily* for the purpose of obtaining a particular example of usage and is one of a multiple quantity sent on the same date, or on closely spaced dates, to the same recipient. This article is not intended to evaluate the importance of such characteristics beyond presenting the data; the significance to collectors must be determined individually.

From the perspective of almost one hundred years later, it is easy to forget that stamp collecting had already existed for over fifty years in 1902 and collectors could be found in countries worldwide, including the Danish West Indies. The "CENTS" postage due stamps were particularly interesting to collectors there for two reasons; they were the first due stamps issued and they had been authorized even though the Mother Country had no such contrivance. (Denmark would not, in fact, issue postage due stamps until 1921.) It is not surprising, then, that shortly after they first became available in late 1901, a few collectors would arrange to create a supply of covers bearing the novel postage due stamps.

There are 38 covers in the *DWI Record* which stand out in clusters of four to twelve sent to five addressees, most dates in each cluster on the same day. Two of the names appear to be in the same family, so there are probably just four recipients. Within each cluster, mostly the same hand appears to have addressed the covers, but real evidence of who the senders were is absent. There are no other examples, among the remaining "CENTS" due stamp bearing covers in the *DWI Record*, of more than two items to the same recipient. The following tables (2-5) list the covers to each addressee.

Date Stamp	Origin	Destination	"CENTS" Stamps	(C)ard / (L)etter
10 Apr 1902	St. Thomas	St. Thomas	two 1C & 6C	L
10 Apr 1902	St. Thomas	St. Thomas	two 1C & 6C	L
10 Apr 1902	St. Thomas	St. Thomas	two 1C & 6C	L
10 Apr 1902	St. Thomas	St. Thomas	two 4C	L
10 Apr 1902	St. Thomas	St. Thomas	two 4C	L
10 Apr 1902	St. Thomas	St. Thomas	two 4C	L

Table 2: Covers bearing "CENTS" postage due stamps addressed to: Mr. G. Leviti. These covers were unfranked.



Figure 2: Typical "Mr. G. Leviti" cover. As the unpaid local letter charge was four cents per rate step, these items must have been double weight. (UPU rules about collecting twice the deficiency were not applied by the St. Thomas post office to local mail.)

Date Stamp	Origin	Destination	"CENTS" Stamps	(C)ard / (L)etter
18 Jun 1902	Br. Virgin Is.	St. Thomas	two 1C	C
19 Jun 1902	Br. Virgin Is.	St. Thomas	two 1C	C
19 Jun 1902	Br. Virgin Is.	St. Thomas	two 1C & 4C	L
23 Jun 1902	St. Thomas	St. Thomas	two 1C	C (DWI Postal)
10 Jul 1902	Br. Virgin Is.	St. Thomas	two 1C	C (DWI Postal)
10 Jul 1902	Br. Virgin Is.	St. Thomas	two 1C	C (DWI Postal)
10 Jul 1902	Br. Virgin Is.	St. Thomas	two 1C	C (DWI Postal)
10 Jul 1902	Br. Virgin Is.	St. Thomas	two 1C	C (DWI Postal)
15 Jul 1902	Br. Virgin Is.	St. Thomas	two 1C	C (DWI Postal)
unreadable	Br. Virgin Is.	St. Thomas	two 1C	C

Table 3: Covers bearing "CENTS" postage due stamps addressed to: C. Durs. The "DWI postal" items are DWI postal cards which had been carried to the British Virgin Islands, franked insufficiently with BVI stamps and mailed back to St. Thomas.



Figure 3: Typical "C. Durs" cover. Mailed from the British Virgin Islands, the DWI postal imprint was useless and the 2 d adhesive underpaid the foreign postcard rate by 2 d or one-cent. Two cents was due as twice the deficiency by UPU rules.

Date Stamp	Origin	Destination	"CENTS" Stamps	(C)ard / (L)etter
20 Jun 1902	St. Thomas	Crux Bay (St. John)	4C	L
22 Jun 1902	St. Thomas	Crux Bay (St. John)	4C	L
22 Jun 1902	St. Thomas	Crux Bay (St. John)	4C	L
23 Jun 1902	St. Thomas	Crux Bay (St. John)	4C	L

Table 4: Covers bearing "CENTS" postage due stamps addressed to: Capt. Wm. Thomas, all unfranked.

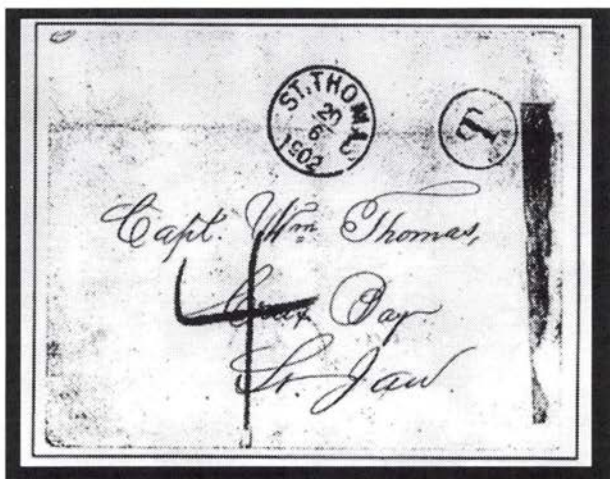
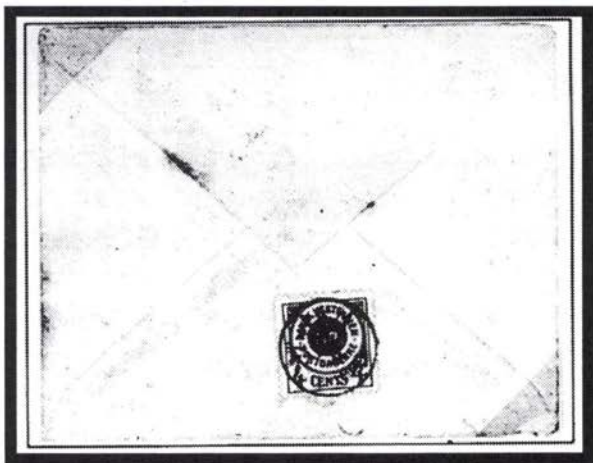


Figure 4: Typical "Capt. Wm. Thomas" cover, front and back. As an unpaid local letter, four cents was due.



Date Stamp	Origin	Destination	"CENTS" Stamps	(C)ard / (L)etter
2 Jul 1902	St. Thomas	Crux Bay (St. John)	two 1C & 6C	L
2 Jul 1902	St. Thomas	Crux Bay (St. John)	4C	L
2 Jul 1902	St. Thomas	Crux Bay (St. John)	4C	L
9 Jul 1902	St. Thomas	Crux Bay (St. John)	two 1C & 6C	L
9 Jul 1902	St. Thomas	Crux Bay (St. John)	two 1C & 6C	L
9 Jul 1902	St. Thomas	Crux Bay (St. John)	two 1C & 6C	L
9 Jul 1902	St. Thomas	Crux Bay (St. John)	two 1C & 6C	L
15 Jul 1902	St. Thomas	Crux Bay (St. John)	two 1C & 6C	L
24 Jul 1902	St. Lucia	St. Thomas	10C	L
24 Jul 1902	St. Lucia	St. Thomas	10C	L
24 Jul 1902	St. Lucia	St. Thomas	10C	L
24 Jul 1902	St. Lucia	St. Thomas	10C	L

Table 5: Covers bearing "CENTS" postage due stamps addressed to Mr. Francis Thomas, all unfranked.



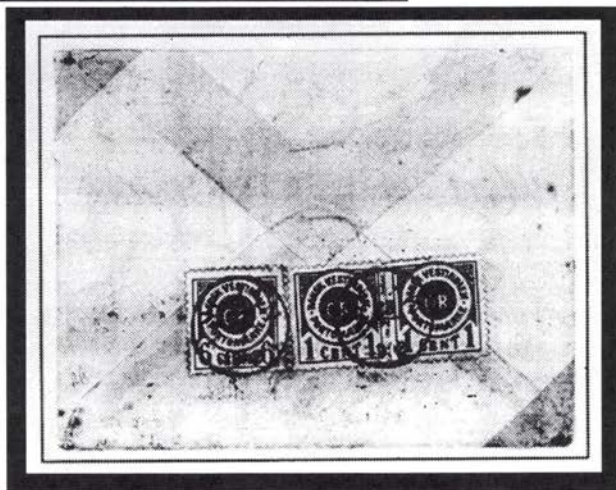
Figure 5: A typical "Francis Thomas" cover. An unpaid local letter at four cents due. A variety of rates are seen on these covers, ranging from this single local rate due, to ten cents, which was the near by island letter rate due at twice the deficiency.

Date Stamp	Origin	Destination	"CENTS" Stamps	(C)ard / (L)etter
22 Jul 1902	St. Thomas	St. John	two 1C & 6C	L
22 Jul 1902	St. Thomas	St. John	two 4C	L
22 Jul 1902	St. Thomas	St. John	two 4C	L
22 Jul 1902	St. Thomas	St. John	two 4C	L
22 Jul 1902	St. Thomas	St. John	one 4C (one missing)	L

Table 6: Covers bearing "CENTS" postage due stamps addressed to: Miss Muggy Kingston. These covers were unfranked.



Figure 6: Typical "Miss Muggy Kingston" cover. Similar to the "Leviti" covers, in spite of their modest size, these were somehow made to be double rate and charged twice the unpaid single step due amount.



The seventeen covers sent to St. John (St. Jan in the Danish spelling) are especially interesting because, according to data in the Danish postal archives, about 175 more of each denomination of stamp were used at St. John in 1902 than in the succeeding three years. The implication is that many of these "extra" postage due stamps were used on philatelic covers and perhaps 150 or so might have been created. If true, only some 10% have survived, or at least have been recorded.

All of these covers were valid postal usages, correctly handled by the post office. They are in no way fake and do illustrate prevailing postage due practice in the DWI. However, their preparation was most likely contrived for philatelic collection and their quality may understandably be ranked lower for exhibition or valuation by many collectors, than postage due items arising by mistake or misunderstanding. □

SCANDINAVIA

Auctioneer of fine stamps since 1972

Order a copy of my auction catalog,
or look it up on the Internet:

www.oloflinder.se

OLOF LINDER

Box 49037, S 100 28 Stockholm, Sweden

Fax no. Int. +468 653 27 95

E-mail: info@oloflinder.se

<http://www.oloflinder.se>

A FAVORITE REVENUE: SWEDISH CHARTA SIGILLATA OF 1845 by LeRoy W. Ferber, ARA

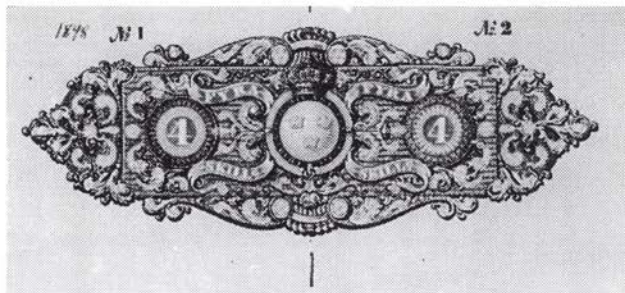


Figure 1. A 4 skilling charta sigillata from 1847. The same design was used from 1845 through 1857.

In the February 1997 issue of *The American Revenuer* we were asked to share our favorite revenue item with others. This invitation immediately brought to mind the nineteenth century Charta Sigillata revenues of Sweden that I have extensively exhibited. The whole series is my favorite, but the particularly favorite stamp of this group is the Charta Sigillata of about 150 years ago.

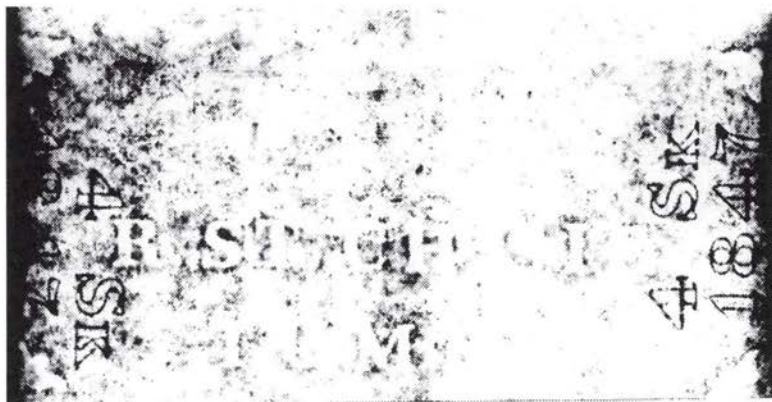
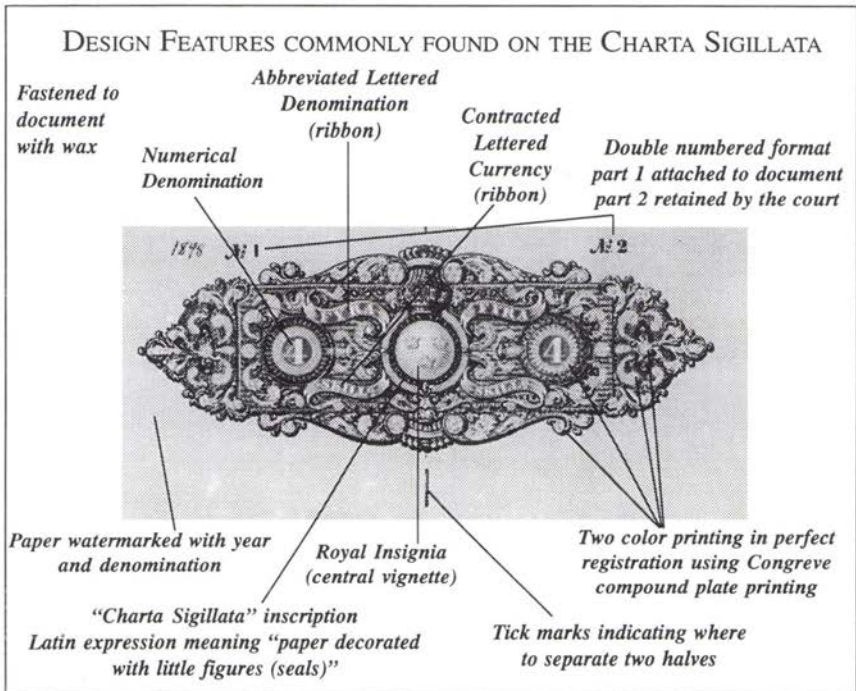


Figure 2. Both positive and negative watermarks were used by the Tumba paper mill in 1847.



The unique characteristics of this stamp are the repeated perfect bi-color registration produced by Sir William Congreve's compound plate printing technique of two colors printed in a single operation; the inks that have retained their brilliant colors; the intricate engraving of the printing plates; and the excellent paper. The Tumba paper mill produced (and is still producing quality products) the paper that has both negative (dark) and positive (light) watermarks, as illustrated here. Each issued year and each denomination and the various corner ornaments amount to approximately 400 different paper runs for the 12 year period of use (1845 to 1857).

The stamp also performed an additional service because it has one half numbered “No. 1” and the other “No. 2.” There are two small ticks, one in the middle of the upper edge, and the other at the lower edge. The No. 1 portion of the stamp was fastened to the document by a wax wafer (the adhesive). The court officer would then cut/tear irregularly across the stamp where marked by the printed ticks and give the now official document to the owner. The No. 2 portion, held by the circuit court of appeals, it a positive identification technique if it ever became a legal mater of possession or rights specified in the document.

Thanks for the opportunity to let revenue collectors know what true workmanship was like 150 years ago. □

Reprinted with permission from The American Revenuer, October 1997.

ONE OF THE LEADING AUCTION-HOUSES IN NORWAY

Buying and selling Norwegian stamps has been our specialty for more than 25 years. We have two auctions every year and several of the "gems" in Norwegian philately have been sold through our firm.

The Norwegian philatelic market has for many years been one of the worlds strongest.

Our thorough handling of the material submitted for sale, together with the prices realised, have given us an international reputation for being the leading specialists in Norwegian stamps.



F.C.MOLDENHAUER AS

BERGENS FRIMERKEFORRETNING

P.O. Box 258 - N-5001 Bergen · Phone: + 47 55 31 44 20 Fax: + 47 55 32 63 55

STAMPLESS MAIL TO AND FROM SCANDINAVIA TO 1868

By Gordon A. Hughmark and Don Halpern, edited by Harlan F. Stone, 1999. Soft cover, 8-1/2 by 11. inches. 202 pp. Illustrations include 104 covers, 16 maps and over 200 postmarks. Prepublication \$70 (before April 1, 1999), post-publication \$85 (add \$5 for postage and handling USA, \$10 foreign) Order from Don Halpern, Rosetta Stone Press, P.O. Box 930, New Providence, NJ 07974.

Information about postal markings on Scandinavian foreign mail is distributed among many books and articles that have been written in a variety of languages. **The primary objective of this book** is to provide a compilation of this information in English. **The secondary objective** is to illustrate the many of the handstamps that were used. Each chapter is self-contained so the reader does not have to absorb previous chapters to find the information wanted.

“The book is a goldmine of information. It is of interest not only to the collectors of the Nordic countries, but Western Europe as well. Collectors will find many details on rate analysis, postal markings, routes, and currency equivalents. Highly recommended.” Alan Warren

TABLE OF CONTENTS

Maps	iv
Preface	v
Chapter 1 The History of Economic and Political Rivalries	1
Chapter 2 French and Netherlands Handstamps on Scandinavian Mail (1703-1808)	13
Chapter 3 Thurn & Taxis Handstamps on Mail from Hamburg (1757-1806)	21
Chapter 4 The French Post Offices in Hamburg (1806-1814)	28
Chapter 5 The Thurn & Taxis Post Office in Hamburg (1814-1867)	38
Chapter 6 The Hamburg Post and the Hamburg Stadtpost	47
Chapter 7 Ship Mail Among Norway, Sweden and England and Between Norway and Hamburg	60
Chapter 8 Danish Town Origin Marks on Foreign Mail (1821-1845)	66
Chapter 9 Swedish-Prussian Post Connections Via Stralsund/Greifswald and Stettin	71
Chapter 10 The Lübeck Post Offices	82
Chapter 11 The Royal Swedish Post Office in Hamburg	92
Chapter 12 The Royal Prussian Post and the Prussian Post Office in Hamburg	101
Chapter 13 The Royal Danish Post Office in Hamburg	112
Chapter 14 The Schleswig-Holstein and the Holstein Post Offices in Hamburg (1692-1775 and 1848-1852)	127
Chapter 15 Altona Mail at Hamburg and the Altona Post Offices	133
Chapter 16 The Royal Hannoverian Post Office in Hamburg	142
Chapter 17 Miscellaneous Handstamps	146
Appendix A Handstamp Catalog	160
Appendix B Currency and Currency Exchange	175
Appendix C Scandinavian Postal Rates to Hamburg	181
Appendix D The Hamburg Post Offices	186
Appendix E Forwarding Agents	189
Appendix F Sea Quarantines and Disinfected Mail	190
Index	194

SCANDINAVIAN MAIL THROUGH THE LÜBECK POST OFFICES Part One: Historical Background

This article is taken in part from Chapter 10 of the book *STAMPLESS MAIL TO AND FROM SCANDINAVIA TO 1868* by Gordon Hughmark and Don Halpern, Harlan Stone, Editor, 1999, 202 pp, soft cover, 104 covers, 16 maps and 240 postmarks are reproduced. Prepublication \$70, postpublication \$85 (add \$5 for postage and handling USA, \$10 foreign surface mail) from Don Halpern, Rosetta Stone Press, P.O. Box 930, New Providence, NJ 07974.

Early History

Lübeck, like Hamburg, was an independent Hanseatic city-state. The Lübeck post offices provided transit for Scandinavian prestamp mail, but not to the extent of the Hamburg services. A Hanseatic post route was in service between Lübeck and Wismar before the Thirty Years War. When Wismar and parts of Pomerania were ceded to Sweden by the Treaty of Westphalia in 1648, a postal agreement was established between Lübeck and Sweden for the transfer of mail from Lübeck to Wismar.¹ It was difficult for Lübeck with its relatively small territory and population to maintain its postal rights against the claims of the Thurn & Taxis Reichspost and its bordering states. Through diplomacy the Lübeck Senate succeeded in holding on to, as much as possible, the rights of the Lübeck Stadtpost to maintain foreign connections.² For example, the Thurn & Taxis Reichspost claimed postal rights in Lübeck in 1687 and, under an agreement between it and the Lübeck Stadtpost the Lübeck postmaster processed the Mecklenburg post and occasionally acted as an agent for the Prussian and Swedish posts.^{2,3}

A postal agreement with Denmark in 1655 provided for a Lübeck foot messenger to carry the mail to Rendsburg with the twice weekly post between Copenhagen and Hamburg. Beginning in 1660 the Danish postmaster in Kiel permitted letter dispatch to Curau, near Lübeck, to transfer mail to the Lübeck Stadtpost.¹ Although the Lübeck post office began processing Danish mail prior to 1695, an agreement was reached in 1697 where the Lübeck postmaster would process Danish mail.⁴ Further agreements were reached in 1723 and 1773.⁵

The Thurn & Taxis post office in Lübeck used single line "LÜBECK" handstamps from 1784 to 1802 and from 1802 an "R.4" was added to show "R.4 LÜBECK".³ The R.4 designated Lübeck's rayon or district for postage due calculations at the French border. These handstamps were used for origin postmarks and may have been used as transit marks.

The French army occupied Lübeck on November 6, 1806. Like Hamburg, Lübeck was made part of the Grand Duchy of Berg. A Berg post office was opened on February 16, 1807 and the Hannover post office was taken over on April 27, 1807. The other foreign post offices in Lübeck were allowed to remain open. The Berg post office became the French imperial post office in 1808. Lübeck was included with Hamburg in the Department of Elbmünding (No. 128) in December 1810 and was viewed as part of the French Empire. Then all foreign post offices in Lübeck were ordered closed and Denmark opened its office in Stockelsdorf, in Danish territory, near Lübeck, on March 1, 1811.⁶

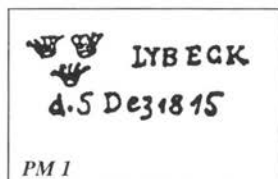
The French post offices used a large number of handstamps during their periods of operation.⁷ Some are known only as transit stamps to or from the towns in the Duchy of Lauenburg. This Duchy was part of the Kingdom of Hannover before 1807 and formed part of Jérôme Bonaparte's Kingdom of Westphalia from 1807 to 1813. Lauenburg was purchased from Hannover in 1815 by Prussia and then ceded to Denmark in return for northern Pomerania.

The Reemergence of Lübeck as an Independent City-State (1813-1848)

The French were driven out of Lübeck on December 5, 1813 by an army commanded by Crown Prince Carl Johann of Sweden and Lübeck was again

declared an independent city. However there was no post connection between Lübeck and Sweden because the route through Hamburg was still under French control. Letters for Sweden accumulated with the Swedish consul in Lübeck because he was instructed not to send official Swedish letters by the Danish post between Lübeck and Copenhagen. In April 1814 they were sent by a Swedish courier. This was followed by a post ship connection between Ystad in Sweden and Travemünde, the port for Lübeck. The first departure from Travemünde on May 12 included military as well as private letters. The new sea post route was announced in the Lübeck newspaper with the title "*Kongl. Schwedisches Post-Amt in Lübeck, Agent Grimm, Post-Director.*" As a result of weather related delays, the route reverted back to Ystad-Stralsund with the last departure from Travemünde on August 4. Because of the high cost of Danish conveyance of Swedish mail to Hamburg, there was reconsideration of the Ystad-Travemünde route in January 1815. A twice weekly route was reestablished and there were 25 departures from Travemünde between June 15 and December 1, 1815. With the winter closure of the sea route, the Swedish post was sent via Hamburg.⁸ A handstamp that showed **three crowns/LYBECK/d.date** (pm 1) was reported to be used by the "Swedish post office in Lübeck" in 1814 and 1815. Very few letters with this postal marking are in private hands.

Hannover reopened a post office in Lübeck in December 1813 based on its old postal rights.⁹ A script *Lübeck* (pm 2) was used by the Hannover post office from 1814 to 1826.¹⁰ This is known from 1814 as a transit stamp on a



letter to Lauenburg and a letter from the United Kingdom to Copenhagen. One cover from 1817 has it as an origin postmark along with a circular date stamp used by the Hannover post office.

The Thurn & Taxis post office reopened on February 4, 1814. By the summer of 1814 the mail that had been processed by the Danish post office in Stockelsdorf was once again dispatched by the Lübeck Stadtpost.⁹



Danish decrees of 1817 and 1819 required all letters from Denmark and the Duchies of Schleswig and Holstein to the Duchy of Lauenburg be listed by the Danish section of the Lübeck Stadtpost. The origin office was marked

in red crayon with the prefix "de" on the letter front. Mail to the Duchy of Lauenburg was sent to the Danish post office in Hamburg after May 7, 1831.¹¹

Thurn & Taxis no longer held the royal postal rights it had before the disintegration of the Holy Roman Empire in 1806. Under an agreement concluded by the Lübeck Senate and the Thurn & Taxis Post on September 21, 1819, the Thurn & Taxis post retained the post connections that had belonged to the Reichspost and the Lübeck Stadtpost and obtained the French post connections from the Napoleonic period for the forwarding of mail to the Thurn & Taxis post office in Hamburg.¹²



Editor's note: this multi-part series will be continued in the May 1999 issue of The Posthorn. References will be listed with the final installment.

Scandinavia and DWI for sale.

Please state your interests or send your want lists,
and you will receive photocopy with reasonable prices.

KNUD RASMUSSEN

Korsoergade 18. DK-2100 Copenhagen Denmark

SCC member 2825

THE LONDON ISSUE OF NORWAY

By Frederick A. Brofos



Figure 1. Genuine issue

What has become generally known as the “London Issue” is an interesting set of stamps issued by the Norwegian government in exile in England during WWII. Beautifully steel-engraved and printed by Thomas De la Rue & Co., London, they were issued in sheets of 100 stamps, perf. 12 3/4. The paper was supplied by Samuel Jones & Co. Ltd., London, and was unwatermarked.

The stamps were issued on January 1, 1943 for use by the Norwegian Merchant Marine and Navy, as well as on the island of Jan Mayen in the Arctic. They were also briefly used by the Norwegian Army on May 17, 1943 only. The six designs showed patriotic subjects together with the King’s royal monogram “H7”.

The quantities printed ranged from 1 million of the 30 øre value to 22,275,000 for the 20 øre ordinary letter rate value. Two additional denominations, 5 and 7 øre (reusing 2 of the previous designs) were added when the set was reissued in Finnmark, the first liberated province in Northern Norway towards the end of the war.

The set was also used for a while at the Norwegian Legation’s post office in Stockholm, Sweden, from February, 1945 on. The stamps were accepted for franking all over Norway from May 8, 1945 but the official first day of sale in Norway was considered June 22, 1945.

The Norwegian postal authorities, however, did not accept as valid for use certain of the original issue which had been previously overprinted in black “London, 17/5/43”, together with a serial number (Figure 1). Around that time, 4000 sets had been overprinted in England with the date of Norway’s National Day and sold for the benefit of the Resistance. Nevertheless, some of the overprinted stamps were later favor-cancelled in Norway.

In spite of the unofficial status of these overprints, they have maintained a high catalog value for both unused and used examples. One might have



Figure 2. Forged set of the London Issue

thought that this would have encouraged forgeries to be produced. This has fortunately not been the case, although a small attempt was made around 1946. However, certain mistakes occurred making it clearly distinguishable. The genuine overprint ran horizontally across the middle of all stamps except the 60 øre — where it was placed vertically — so as not to mar the monarch's face (Figure 2). This consideration was over-looked on the forgeries. Furthermore, the 5 øre stamp was also falsely overprinted. This value did not occur in the original overprint set. As sometimes happens, the forgeries in this case are actually much scarcer than the originals.

□

SCANDINAVIAN POSTAL HISTORY

Order now for your free sample of our next international postal history catalog.

Four Auctions Yearly Text in English

Postal history items from Finland, Åland, Sweden, Norway, Greenland, Baltic States, and Russia. Special areas: ship mail, railroad mail, airmail, military mail, local mail, postmarks, revenues, etc. About 600 lots at each auction.

Auctioneer: lawyer Martin Holmsten, member SCC

Rurik Auctions

PB432

FIN 65101 VASA, FINLAND

TEL. +358-6-3177789, TELEFAX +358-6-3123046

E-mail: m.holmsten@rurik-acn.inet.fi

Welcome to the Leading Norwegian Stamp Auctions!



Twice a year we arrange a public auction in Oslo as we have been doing for some 15 years. The total turnover has been some NOK 10 millions a year. Each auction contains approximately 1100 lots with starting prices from NOK 100.

Our most expensive item was sold for \$125,000 in 1987; Norway No. 1 in a block of nine from the world famous "Vi King" collection formed by Mr. Jared H. Richter. This is a Norwegian all time high.

The auctions also include top quality objects from many other countries. The market for stamps in Norway is one of the strongest in the world, and this is reflected in the prices realized not only for Scandinavian items. Our computer systems includes some 18,000 customers worldwide and we believe our selling potential would be most interesting also for vendors abroad.



We would be happy to serve you. Drop us a line - or a fax or give us a call for a free copy of our auction catalogue or for further information.

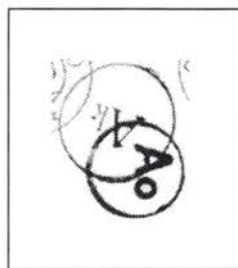
Elisenbergvn 19 N-0207 OLSLO 2
NORWAY. Phone 47-2-441914
FAX 47-2-560404

GERMAN "A" CENSOR MARK UPDATE

By Henk P. Burgman

In reponse to "Supplementary notes to 'The "A" Series German Censor Mark of WWII'" *The Posthorn*, August 1998, (Eric Jarvlepp), Henk Burgman writes:

In reference to Tom Bergendahl's article in the May 1998 issue of *The Posthorn*, I have submitted an updated and expanded copy of the list he included with the names of the cities that belonged to the abbreviations. Specifically, I noted the lack of the figure "n." The censormark "An" was in use in the city of Nancy, France, the "Auslandsprüfstelle" for the mail to the South of France and the neutral hinterland.



As far as I know, the following is a complete list of all censor marks, including which mail was censored at each "prüfstelle".

- "As" - Königsberg, Germany. - Baltic states, Russia so called "Ostland".
- "Ab" - Berlin, Germ. - Transit and airmail South- and North America, Finland.
- "Ac" - Köln, Germ. - Benelux country's, North of France.
- "Ad" - Munchen, Germ. - Italy, Switzerland, Spain, Portugal.
- "Ae" - Frankfurt am Main, Germ. - Switzerland, South and North America, South of France.
- "Af" - Hamburg, Germ. - Scandinavia but only surface mail, no air-mail.
- "Ag" - Wien, Austria. - Balkan countries including Turkey.
- "Ali" - Berlin, Germ. - German p. o. w. mail from somewhere in 1944.
- "Ak" - Kopenhagen, Denmark. - Sweden, Norway, Finland.
- "Ai" - Lyon, France. - Mail from and to South of France, Transitmail.
- "An" - Nancy, France. - South of France and the neutral hinterland,
- "Ao" - Oslo, Norway. - Sweden, Finland, Denmark.
- "At" - Trondheim, Norway. - Sweden, Finland Denmark.
- "Ax" - Paris, France. - Zonemail for France, Mail from the Red Cross, Netherlands.
- "Ay" - Bordeaux, France. - Mail from and to South of France, Transitmail.

Editor's note: Mr. Burgman is the P.R. commissioner of NFV SKANDINAVIE, the Dutch Scandinavian Stamp Collectors' Society.



SCC MEETING SCHEDULE

	ANNUAL	REGIONAL	NORDIC	INTERNATIONAL
1999	BALPEX Sep 3-5 Hunt Valley MD	ROMPEX May 14-16 Denver, CO	NORDIA 99 Sep 24-26 Turku FI	
2000	WINNIPEX Apr 27-30 Winnipeg, MB	SANDICAL Jan 21-23 San Diego, CA	NORDIA 2000 Sweden	
2001	NORDIA 2001 Jan 26-28 Tucson AZ		NORDIA 2001 Jan 26-28 Tucson AZ	HAFNIA 2001 Denmark

SPECIALISED SCANDINAVIA

A comprehensive range of services from
ACORN PHILATELIC AUCTIONS

1. Regular POSTAL AUCTIONS (4 sales per year) of around 200 lots ranging from L30 to L500
2. A "WANTS LIST" Service catering to the needs of collectors from Beginners to Specialists.
3. LITERATURE SEARCH. We will occasionally be offering books for sale or will seek out more elusive items.

Write now with details of your requirements to:

Acorn Philatelic Auctions

PO Box 152, Salford, Manchester, M17 1BP Britain

Tel: 0161-877 8818 Fax: 0161-877 8819

THE EURO AND SCANDINAVIAN PHILATELY

By Alfred A. Gruber



This brief article is intended to alert our readers to the changes (philatelic opportunities) taking place overseas with the advent of the European Union and the effects on Scandinavian stamps. Rather than await complete information I thought it beneficial to write about what is being reported.

January 1, 1999 is the starting date for chains of events to come. There will be a brand-new currency in the international monetary system called the euro. The euro becomes the currency of the European Union members participating in the Economic and Monetary Union. The euro will eventually replace national currencies in eleven of the fifteen European Union (EU) countries. The only Scandinavian country currently in the eleven is Finland. The remaining four nations in the EU including Denmark and Sweden may participate in the future. The above is an overview of the general conditions.

At the Second Seminar on "The Euro and Stamps" (June 22, 1998) answers to some of the questions raised at the First Seminar were offered by Michael O'Keefe, Chairman of the Single Currency Working Party for PostEurope. Mr. O'Keefe noted that almost all of the original Euro countries have signified their own stamps will be valid for a period of six months.

Paolo De Rosa, President of the International Federation of Stamp Dealers' Associations, summarized the Second Session by noting the majority of the EU countries will be introducing dual currency stamps on January 1, 1999. Seemingly in disagreement with Mr. O'Keefe, he said existent currency stamps will be valid until 2002. There will be individual country policies for exchanging old stamps for new. With some exceptions stamps from all member countries will be valued exclusively in the Euro currency from 2002 on.

There no doubt will be further information.

What does this mean for Scandinavian stamp collectors? There are now fifteen full members in the European Union including Scandinavia excepting Norway and Iceland.



Denmark and Sweden are permitted to "opt out" of a common currency by 1999. It appears then that only Finland will be issuing euro or dual currency stamps in 1999; Denmark and Sweden later perhaps. Or possibly some countries with large stamp stocks will resort to the time honored method of revaluation by overprinting.

Satellite postal entities like Greenland, the Faroes and Åland will probably be directly tied into their principals, Denmark and Finland. According to the Ålands Posten 1998 Christmas flyer, Åland Post will issue its first Europa stamp showing a euro value on April 28, 1999. During the years 2000 and 2001, all new Åland stamps will have values shown in both markka and euro. The expectation is to change stamp valuations over to euro in January 2002.

Change always produces opportunities. There is a lot of postal history in the making and new areas to explore. Savor it.

Author's note: Most of the above is gleaned from Mekeel's & Stamps MAGAZINE of September 25, 1998, page 17, and the 1998 World Almanac. Information on this subject continues to be mixed. LINN'S for January 11, 1999 reports on a Finland stamp to be issued Jan 15. The value is printed as 3.00 mk with no evidence of a value in euros. Stay tuned!

□

New DAKA Catalog...

Classic Denmark 1999

This Eighth edition of the popular DAKA catalog of classic Danish philately has many dramatic price changes; a completely revised and expanded postal history chapter; extensive chapters on covers to foreign destinations, postmarks, pre-philately; and much more. In other words, it's the ideal reference source for serious collectors of Denmark. And this latest edition is in DAKA's familiar and handy pocket format. Your favorite dealer has it, or you can order it from us, the U. S. distributor. We accept Visa and MasterCard.

\$27.50 postpaid

We carry the complete line of DAKA/GF Scandinavian specialized catalogs and would be pleased to send you an up-to-date list.

Telephone: 570-717-7462; Fax: 570-717-0410;

Email: far0es@aol.com.

Lizabeth Stamp Company

P. O. Box 321

Bloomsburg, PA 17815



LOVE LETTERS IN COPENHAGEN

By Dan Laursen

The most important symbol of the Danish Christmas is the red-and-white heart, which hang in windows of homes and shops, decorate Christmas trees, and are seen throughout the country. To commemorate this symbol of the season – and its close tie to the Valentine letter – the new Post and Tele Museum in Copenhagen is displaying a temporary exhibit of Christmas letters. The museum has chosen some classic letters which, in a very beautiful way, exemplify the meaning of Christmas. These are Victor's letters, originally sent to a Danish lady who met "Victor IV" (as he called himself) in 1868. They are love letters, but Victor's love encompassed all of mankind. His letters have meaning for young and old alike.

His real name was Walter Karl Glück (1829-1886). He was trained as a journalist in the United States, but chose to live as an artist in Amsterdam. For him closeness and intensity in the connection to other human beings was decisive. One of his characteristic sentences is "The time is always now." His pictures and captions effected the message in a wonderful way. Victor's letters are works of art. The envelopes were old, faded paper bags decorated with beautiful pictures cut out from colorful magazines; he used cut outs of people, ships, and reproductions of known works of art. As he re-used the art, he gave it new life. Today, mail art is a certain genre within art. It circulates and cannot be bought. It is cheap art that everyone is able to create. Mail art is not commercial but it is democratic. Victor's letters invite the public to decorate their letters, to make letters of value that are kept and read again and again.

□

SCANDINAVIAN STAMPS & POSTAL HISTORY

Auction sales held regulary with emphasis on the unusual and less common material. Scarce Scandinavian issues, etc, bought and sold.

We feature strongly most aspects of collecting and A to Z countries.

We provide a quality source of material of interest to you.

For a complimentary copy send your details and interests to:

Beech House Wilderspool Causeway

Warrington Cheshire Tel: 01925 231151

WA4 6QP UK Fax: 01925 232204



PHILANGLES

DENMARK "VIA AMERICA" MAIL

By Viktor E. Sten

As an addition to the intriguing "Via Siberia" cover that Alfred A. Gruber wrote about in the August 1998 issue and the follow up article by Hal Vogel (November 1998), which cast more light on the circumstances, I would like to show my 5 cents worth of knowledge with a postcard I recently purchased to fit into a "Denmark At Sea" exhibit I am fiddling with.

The postcard is written in Vladivostock on August 5/1914 by a Danish sailor (I presume) and franked with a russian 4 kop stamp. For some reason the card did not make it to a post office in Vladivostock. Subsequently, the writer added "Via America" to the address and mailed it in Yokohama, Japan,

where it was postmarked on August 18, 1914 and rubber stamped PAQUEBOT. From Yokohama it went to the transit post office in Tsuruga and onwards to Denmark via America. The message on the card is also interesting in that the writer hopes that they will smash the German fleet. He also mentions that there are rumors about the Germans having mined the Great Belt.



SCC CONVENTION AT BALPEX 99

Plan now to attend our next national convention at BALPEX in Hunt Valley Maryland, September 3-5. This is Labor Day weekend but the show runs Friday-Saturday-Sunday. Exhibitors should obtain a prospectus from Warren Pearse, 350 South River Landing Road, Edgewater MD 21037.

BALPEX is held at the Hunt Valley Marriott Inn which is just off the interstate I-83 north of Baltimore. One of the judges will be a Scandinavian specialist from Norway. Friday night there will be an SCC dinner, so come early and enjoy the holiday weekend. If you haven't seen the Harborplace in Baltimore and the national aquarium there, then this trip is a MUST.

SCC AT CHICAGOPEX

By Alan Warren



Greg Frantz accepts the Grand Award.



Knud Mohr makes a presentation to the SCC crowd.

A wonderful SCC dinner arranged by Chapter 4 member Ron Collin and his wife Marlene, was held November 6 at Paso Vino restaurant. Roberta Palen, president of Chapter 4, introduced special guests Sig Thorsteinsson and his wife from Iceland, Knud Mohr from Denmark, and Risto-Matti Kauhanen from Finland. Eliot Landau, Show Chairman of CHICAGOPEX, presented greetings on behalf of the Chicago Philatelic Society.

Norm Andrews introduced SCC President Roger Quinby followed by Sig Thorsteinsson who presented a portrait of the president of Iceland to be hung in the new home of the SCC library at the Rocky Mountain Philatelic Library in Denver. Sig also acknowledged the contributions of Librarian W. E. Melberg. Former SCC president Bob Frigstad presented the John A. Siverts Memorial Award for the best SCC single frame entry at the show to Stuart Silverberg for his exhibit of "Thule".

Our visiting judge from Finland who was a member of the show jury, Risto-Matti Kauhanen, then spoke about the lack of universal rules regarding judging despite the fact that international exhibitions have been around for a century. He compared the approach to judging as practiced in Europe vs the United States. The point system has been used at FIP shows for twelve years. Both systems work but the point system provides the exhibitor with more specifics about where he needs to improve.

The point system is also helpful in comparing entirely different exhibits, and points also help to overcome the complications of verbal evaluation among jury members of varying languages. Kauhanen mentioned the upcoming NORDIA 99 show in Turku September 20-24. Roger Quinby presented a plaque of appreciation to the speaker.

BOARD MEETING

The following morning the SCC Board of Directors met. Since FLOREX will disband after 1999, the SCC regional meeting for the year 2000 was moved from Orlando to SANDICAL in San Diego. The national SCC convention will be held in 2002 at the Philadelphia National Stamp Exhibition. In other announcements, Don Brent was named APS representative for the Club and Don and Mike Ball will co-chair the Awards Committee. SCC approved donations to the NORDIA 2001 exhibition scheduled for Tucson in January of that year.

SCC will offer an award for the best topical/thematic exhibit at the national conventions, and will offer awards for the NORDIA 1999 and 2000 shows. A silver tray was donated for awarding at KPK's 111th exhibition. A members/services handbook is scheduled for printing in 2000. The forward-looking Board of Directors began the initiative of inviting Nordic country judges and speakers at our annual convention. The policy is helping to bring increased recognition of SCC internationally.

Roger Quinby appointed a committee to examine *The Posthorn* including content, format, editorial board composition, and other aspects. The committee consists of Don Halpern, Howard Schloss, and Al Gruber, and will be co-chaired by Alan Warren and John DuBois. A report will be presented by the committee at the regional meeting scheduled for ROMPEX in Denver May 14-16, 1999.

MEMBERSHIP MEETING

The SCC annual membership meeting was held November 7. Chapter 4 member Norm Andrews welcomed 33 members. SCC President Roger Quinby announced the 1999 regional meeting scheduled for ROMPEX in May. Recognition was given to two 50-year members of SCC and several 25-year members including Jay Smith and Norm Andrews.

Guest speaker was Knud Mohr, recently elected president of the FIP. Knud described the fact that his father was a well known philatelist in Denmark and involved with the Copenhagen Philatelic Club (KPK). Knud formed a collection as a child but had his father sell it so Knud could spend the money on other interests. Later in life, after he married, Knud realized that he missed his stamps and so he arranged with his father to begin collecting again.

Knud joined KPK and became involved with the board of directors and eventually was named president. His specialty is Denmark up to 1885. In April 1851 stamps were first issued in Denmark but it was learned that pen cancels could easily be removed. Handstamp cancellations were developed which helped overcome this problem. Knud described the five different types of footpost in Denmark.

After forming a traditional stamp collection and exhibit he realized this approach was boring and so he shifted to the study and collection of postmarks. He admitted it is difficult to decide whether to exhibit for one's self or for the judges, and the best approach is to combine the two concepts. He expanded his interest from Copenhagen to include the duchies Schleswig-Holstein. Knud illustrated his talk with color copies from his collection. His exhibit, "The Kingdom of Denmark and the Duchies Schleswig Holstein 1851-1884" was shown in the Court of Honor at CHICAGOPEX and received a show gold award. □

SHOW AWARDS

Grand Award—Gregory Frantz, "Steamship Companies"

Gold

Gregory Frantz, "Steamship Companies"

Stuart Silverberg, "Greenland: Pakke-Porto", also Nordic Federation award

Roger Quinby, "Finland's Vaasa-Wasa Temporary Wartime Issue"

Warren Pearce, "Danish West Indies Mails 1790-1917", also APS medal of excellence for material prior to 1900

John DuBois, "Danish West Indies Display of Regular Issues 1905-1917"

Ross Olson, "The Definitive Postage Stamps of Sweden 1910-1936", also SCC grand award

Jeffrey Crown, "The Faroe Islands 1839-1962"

Vermeil

Dave Anderson, "Swedish Military Envelopes 1929-1944"

Bob Lang, "Early Finland Commemoratives 1927-1946"

W. E. Melberg, "Danish Sunday Letters",

also AAPE merit award

Silver

W. E. Melberg, "Something is Rotten in the State of Denmark"

John Schaad, "Norway Aerograms"

James Burgeson, "Sweden Ring Type 1872-1891"

Robert Frigstad, "Iceland Mint Single Postal Cards"

SINGLE FRAME EXHIBITS

Platinum

Stuart Silverberg, "Greenland - Thule"

Gold

Bob Lang, "Finland Airmail to America by Transatlantic Clipper 1939-1941"

Stuart Silverberg, "Greenland - America Issue"

Vermeil

Dave Anderson, "Sweden - The 2 Öre of 1891-92, Varieties and Postal History"

Michael Falls, "Major Errors and Printing Flaws of Icelandic Stamp Issues"

Silver

Gregory Frantz, "Iceland Parliament Artist Drawings (display)"

Silver-Bronze

Florence Melberg, "Danish Cancels" □

BOB LANG RECEIVES PELANDER AWARD

By Alan Warren



Bob Lang accepts the Pelander Award from Howard Schloss. Roger Quinby photo.

During the SCC dinner held at CHICAGOPEX, SCC Treasurer Howard Schloss presented the prestigious Pelander Award to Bob Lang. Bob has served SCC in the past as Treasurer and most recently as Executive Secretary. He is currently Vice President of Chapters. The Carl E. Pelander Award was created in 1968 to perpetuate the memory of one of the founding members of SCC who was always willing to assist his fellow philatelists in all phases of Scandinavian philately.

It is presented to an SCC member "for outstanding work in furthering the aims of the Club." Bob Lang therefore joins eleven other individuals who have achieved this distinction.

Bob Lang joined the SCC in 1965 after hearing about the Society from a member of the DuPont Stamp Club. In the Fall of 1966, armed with a club directory, he contacted several SCC members in the area to see if there was any interest in starting a local Chapter. Jack Day agreed to host an organizational meeting, which included Bob Brandeberry, Al Gruber, Dean Steele, Carl Sanders and one or two others. Consensus was to sign a Chapter Application, and so, after receiving Board approval Chapter 13 was born. As the principal organizer, Bob was elected the first President.

In 1969, Bob was elected Treasurer of SCC for a two year period, which at the time included the duties of processing memberships. He served under President, Svend Yort. His collecting interests branched out from Icelandic stamps to include all of Scandinavia used, especially Finland. In 1992, Al Gruber (immediate Past President) convinced Bob to seek the office of Executive Secretary. He was appointed to succeed Bill Lamkin by President Roger Schnell in the winter of 1992.

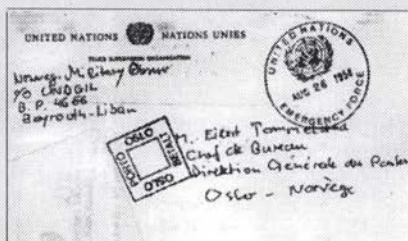
Bob has been a staunch supporter of SCC, working as an ad hoc member of several committees. He instituted the 25 and 50 Year Clubs. He actively exhibits and is an avid supporter of single frame exhibiting.

Bob is a Director of the Brandywine Valley Stamp Club, Publicity Director for the annual "DELPEX" Stamp Show, a Life Member of APS, a member of AAPE, the English SPS, Finland's Postal History Federation, the American Topical Association, and the Lighthouse Stamp Society. He also serves as a Director of NORDIA 2001. □

Collector is looking for information regarding the UNOGIL operation in Lebanon 1958, where U. N. military observers were on duty. Does anybody have information about UNOGIL? (Dates? Locations? Number of UN observers?)

Does anybody have such covers sent by UNOGIL observers? Please contact J.-L.

Emmenegger, P. O. Box 110,
CH-1009 Pully, Switzerland.



1999 Facit Scandinavia Specialized Catalog \$47.95 (Net Cost \$37.95*)

*The \$47.95 catalog comes with our bonus \$10 coupon toward a minimum \$50 new purchase from one approval selection from your want list.

- The primary Scandinavia specialized catalog.
- **Includes Swedish revenue stamps.**
- Complete English/Swedish text.
- Call toll-free with VISA or MasterCard.
- U.S. Orders \$47.95 Postpaid (book rate).
- Foreign orders add \$3.00 for surface mail. Airmail and registration are extra.

To order call **1-800-447-8267** or
1-336-376-9991 Fax 1-336-376-6750
Email: jay@jaysmith.com

North American Distributor:
Jay Smith & Associates
P.O. Box 650-615
Snow Camp, NC 27349



THE SCANDINAVIAN COLLECTORS CLUB

Founded November 25, 1935

ELECTED OFFICERS

PRESIDENT: Roger Quinby, PO Box 738, Clifton Park NY 12065
 VICE PRESIDENT: Dr. Warren Pearse, 350 S. River Landing Rd, Edgewater MD 21037
 VICE PRES, CHAPTERS: Robert W. Lang, 23 The Horseshoe, Newark DE 19711-2066
 SECRETARY: Donald Halpern, PO Box 930, New Providence NJ 07974-0846
 TREASURER: Howard Schloss, 261 Congressional Ln #705, Rockville MD 20852
 DIRECTORS: David A. Anderson, 33780 Feldspar St NW, Princeton MN 55371
 John DuBois, c/o Thermalogic Corp., 22 Kane Industrial Dr,
 Hudson MA 01749
 Michael E. Falls, 575 Virginian Dr, Norfolk VA 23505-4242
 Gregory Frantz, 18314 E Geddes Pl, Aurora CO 80016-1608
 Jerry D. Moore, 615 Woodbine Dr, San Raphael CA 94903
 Stuart Silverberg, 23509 Shingle Creek Rd, Golden, CO 80401

APPOINTED OFFICERS

EXEC SECRETARY: Donald B. Brent, PO Box 13196, El Cajon, CA 92020
 HISTORIAN: Roberta Palen, PO Box 840, Loop Station, Chicago IL 60690-0840
 LIBRARIAN: Dr. W.E. Melberg, Box 134, Allenton WI 53002
 ASST LIBRARIAN: Stuart Silverberg, 23509 Shingle Creek Rd, Golden, CO 80401
 STAMP MART MGR: Eric Roberts, PO Box 460201 Galleria Sta, Houston TX 77056
 CANADIAN MART MGR: Roger Fontaine, 177 Crestwood Cr, Winnipeg MB Canada R2J 1H9
 APS REPRESENTATIVE: Donald B. Brent, PO Box 13196, El Cajon, CA 92020
 PUBLICITY CHAIRMAN: Marvin D. Hunewell, PO Box 190047, St. Louis MO 63119
 AWARDS CHAIRMAN: Ron Collin, PO Box 63, River Grove IL 60171
 LITERATURE PROMOTION: Alan Warren, PO Box 39, Exton PA 19341-0039
 WEBMASTER: Sandra Downs, PO Box 477, Imperial PA 15126-0477

MEMBER SERVICES COORDINATORS

EXHIBITION COORD: Dr. Warren Pearse, 350 S. River Landing Rd, Edgewater MD 21037
 COMPUTER COORD: Paul Helgesen, 34 Plymouth Rd, White Plains NY 10603-1129

SCC STUDY GROUPS

DWI STUDY UNIT: John L. DuBois, c/o Thermalogic Corp., 22 Kane Industrial Dr, Hudson MA 01749
 SWEDEN RING: George A. Kuhhorn, PO Box 4486, Emerald Isle NC 28594
 FINNISH STUDY GROUP: Roger Quinby, PO Box 738, Clifton Park NY 12065

POSTHORN BUSINESS MANAGER NEEDED

SCC is seeking someone for the position of Business Manager of *The Posthorn*. The individual is responsible for advertising in the journal and seeks new advertisers, invoices existing advertisers, and works closely with the Editor to identify the advertising portion of each issue. Prior experience with advertising would be a real plus. Anyone interested in this position should contact President Roger Quinby, Box 738, Clifton Park NY 12065.

E-mail <rqquinby@aol.com>.





President's Letter

Roger P. Quinby

We had a very successful Annual Meeting at Chicagopex in November and I want to take this opportunity to acknowledge the splendid efforts of our hosts, Chicago Chapter 4 for the wonderful SCC Dinner and their gracious hospitality. Especially, I want to recognize Ms. Roberta Palen, Fred Bloedow and Ron Collin. Doc Melberg and Fred Bloedow organized an excellent auction of surplus library material. Bob Lang passed the baton to Don Brent, our new Executive Secretary, and we thank him for the excellent meeting arrangements and especially his prep work for the Board Meeting. Bob received the Pelander Award for his many years of unselfish service to the SCC. Congratulations, Bob.

We were very fortunate to have as our principal guest speaker Knud Mohr, the newly elected President of FIP and Nordic federation coordinator for Nordia 2001. Mr. Mohr met with the Nordia Board to further advance the plans for this ground breaking philatelic event. We were also delighted to have had Risto-Matti Kauhanen of Finland serve on the jury and speak at our annual dinner on the FIP judging system, and we were thrilled to again see our very dear friends from Iceland, Sigurdur Thorsteinsson and his lovely wife.

The full slate of candidates recommended by the nominating committee were elected. Three new directors were elected to four year terms and I would now like to welcome John DuBois, Jerry D. Moore and Stuart Silverberg to the Board.

The primary business of the Board meeting centered on discussions on how we can improve *The Posthorn*. The Club journal is the "glue" that holds us together. While Nordia 2001 will surely attract new members, the quality of *The Posthorn* will determine long term membership growth and membership renewal. We must therefore strengthen and improve the content and appearance of *The Posthorn* if we are to realize the full potential of the rather substantial financial contribution the Club has already made to Nordia 2001.

To this end I appointed a committee, co-chaired by Alan Warren and John DuBois, to review all aspects of the journal and submit a report and recommendations to the Board at the next meeting scheduled to take place at our regional meeting during the Rompex, (Denver, CO) May, 14-16, weekend. At least one of the meetings will be held at the Rocky Mountain Philatelic Library, the new home of the SCC Library. Everyone is welcome, so if you are planning to attend the show, be sure to let Don Brent know!

If you have any comments or suggestions for improving *The Posthorn*, I ask that you submit them in writing as soon as possible to either Alan Warren or



John DuBois. The other committee members are Al Gruber, Don Halpern, Howard Schloss and Sandra Downs.

As President, I receive quite a bit of email and occasionally some snail mail about various Club matters and every possible subject relating to stamp collecting. But, I was rather surprised to receive a letter last month from a new member in Pakistan asking guidance in the formation of a collection of the Finnish charity stamps. He mentioned that he had chosen this area after studying the 1997/98 Facit. The charity (semipostal) stamps of Finland are very popular in Finland and many collectors have exhibited these stamps at their national shows. Of course, I was eager to offer a few suggestions for structuring such a collection.

How many of us are thinking about building a new collection? I have already retired several of my collections from competitive exhibiting and I have formed several new one frame exhibits and in the past year I have been working on a collection of the first postal cards of the Republic of Finland, 1917 - 1930. I have found the experience exhilarating and challenging. I feel philatelically re-energized. I think you will have the same good feelings I have experienced, so maybe you will consider this possibility before winter has passed and we have put away our stamps until next fall. There are hundreds of possibilities jumping out of the pages of Facit, Norma and *The Posthorn*, etc. Each is a great starting point for a new philatelic adventure.

REGIONAL MEETING AT ROMPEX

Our regional meeting will be held at the Denver show this year on May 15th. Romplex will be held at the Holiday Inn-John Q. Hammons Trade Center which is located at I-70 at Chambers Rd. The show runs from May 14th to the 16th and is a WSP show. Information and exhibit entry forms may be obtained from ROMPEX, PO Box 2044, Englewood, CO 80150. This will be a chance to visit the SCC Library in its new home at the Rocky Mountain Philatelic Library

To complete my book *The Americans in Greenland*, I am looking for philatelic items representing all American activities there: Army, Air Force, Navy, V-Mail, QSL cards, metermarks, research projects, etc. Please contact me with your information. Gerhard Müller, Friedrich-Stolze-Str. 42, D-65824, Scwalbach/Ts., Germany. Fax: 0049-6196-86310. E-mail: mueller.greenland@gmx.de



Scandinavian Literature Notes

Alan Warren

In the December 18 issue of *Mekeel's & Stamps Magazine*, Paul Jackson writes briefly about Norway #1 and illustrates an 1855 cover bearing five copies of the stamp to cover 4 skilling postage and 16 skillings insurance. Harry Snarvold illustrates and describes an unusual 1853 cover cancelled at Christiana, Norway and sent to Aurich in Hannover, in the December issue of the *London Philatelist*. Although this was before Norway issued postage stamps, the letter appears to be prepaid to destination. The routing of the cover via Denmark through Hamburg resulted in affixing of a 1/10th thaler Hanover stamp to confirm that the ongoing postage had been paid.

Robert Dunn discusses the Danish internment camps immediately following World War II in an article in the December issue of *German Postal Specialist*, published by the Germany Philatelic Society. He provides a map with some of the camps marked, uses some illustrations of covers and censor marks, and lists over three dozen fugitive and internee camps by location along with descriptions of their cachets and censor handstamps.

Danish Registration Marks

Bob Johnson discusses Danish registration markings prior to the introduction of the "R" marks in 1903, in the December issue of *Scandinavian Contact*. In the same issue Bill Ross continues his series on Åland postal history with part 6 on the end of the Russian period, and Les Freestone and Eric Keefe add part 13 to their series on Finnish Fieldposts, this time on the German fieldpost in north Finland.

The November issue of *Dansk Filatelistisk Tidsskrift* carries reports on NORDIA 98 in Odense and the meetings of the Danish Philatelic Federation, and Ole Steen Jacobsen begins a series on the King Frederik VIII issue on cover. This continues in the January issue along with a profile of the Vejle Stamp Club by Lennart Weber. In the issue 4/98 of "News from the Faroes", published by Postverk Føroya, Anker Eli Petersen describes the development of his design for the 1998 Christmas seals. Proceeds from the seals go to helping underprivileged children in the Faroes. Issue 1/99 of the same journal contains the first part of an article on the history of the postal service in Tórshavn.

Post Greenland publishes a quarterly, *Greenland Collector*, and the January 1999 issue carries the first in a series of articles about the country's postal history by Torben Hjørne. In the November issue of *Skilling*, A. Quist

Christensen lists varieties of the 15 øre Frederik IX, type III issue.

DWI Study Unit

The efforts of the Danish West Indies Study Unit are now coordinated by John L. DuBois who also edits the Unit's newsletter. The newsletter appears irregularly about two or three times a year. Recent issues contain articles about the seven cent rate to Denmark and Germany via German ship, double watermarks on DWI postal stationery, an article by Jeremiah Farrington on the mysterious printing II of the 4-cent bicolor, analysis of a rate to Madeira, and the earliest known address card from St. Thomas. Information about the DWI Study Unit can be obtained from John DuBois, c/o Thermalogic Corp., 22 Kane Industrial Drive, Hudson MA 01749.

The November issue of *Svensk Filatelistisk Tidskrift* carries reports on the MITTFRIM show in Sundsvall as well as NORDIA 98 in Odense. In the same issue Harry Hohndorf writes about the fieldpost letters during the Danish-German war of 1848-1851. The December issue of *SFT* has a nice profile of Knud Mohr, recently elected president of FIP.

□

SCANDINAVIAN STAMP BOOKLETS

We have the biggest stock -- including older booklets! --with separate price lists for each country.

Denmark - Finland - Norway - Sweden
Iceland, Faroes, and Greenland

They are sent free on request.

Or, order our new wholesale price list for \$5 shipping.

ROLF GUMMESSON AB
KUNGSGATAN 55
SE-111 22 STOCKHOLM, SWEDEN

TRANSFERS & RE-ENTRIES**Alan Warren**

Bulletin 1 for Nordia 99 begins with a general announcement by Pekka Taitto, president of Suomen Filatelistiliitto (Finland's Philatelic Federation). The show will be held September 24-26, 1999 in Turku (Åbo). Commissioners for Finland are Kaarlo Hirvikoski and Jukka Sarkki. The other Nordic commissioners are Toke Norby for Denmark, Sigurdur Petursson for Iceland, Per M. Kinden for Norway, and Lars Magnus Sjöholm for Sweden. SCC president Roger Quinby is the U.S. representative.

President of Nordia 99 is Juhani Pietilä, and the vice president is Bo Söderholm. The juries are: Traditional Philately—Juhani Olamo, Halfdan Helgason, Per Friis Mortensen, and Arne O. Olsson; Postal History—Kari Rahiala, Frank Gilberg, Olafur Eliasson, and Erik Hvidberg Hansen; Thematic—Eero Hellsten and Gunnar Dahlvig; Youth—Harry Swanljung and Per M. Kindem.

Schnell on DWI

Former SCC president Roger G. Schnell was the invited speaker at the October 1, 1998 meeting of the Royal Philatelic Society of London. He started out by setting the historic and economic backgrounds of the Danish colony at the "Crossroads of the Caribbean" and proceeded to describe the stamps and postal history. Roger presented the Society with a color photocopy of his collection and RPSL president Barrie Jay gave Roger the Society plaque.

During the NORDIA 98 palmares in Odense, the Denmark Medal was awarded to Kai Dagfinn Nielsen for his many years of contributions to philately. The Robert Bechsgaard memorial cup and medal were awarded to Ole Maintz, president of the Danish Postal History Society. Bo Söderholm was recently elected Chairman of the Finnish Philatelic Federation.

□

SCANDINAVIAN AREA AWARDS**Alan Warren**

At PRAGA 98 in Czechoslovakia, R. Dunn received a large silver for "The German Occupation of Denmark." Michael Falls received a silver-bronze for "Airmail in Iceland" at VAPEX along with an American Air Mail Society silver award. At the Greater Toronto Show, Charles Shoemaker won a vermeil for "Greenland—The American Issue." At the same show, in the one frame category, J. J. Danielski took a silver for "Novy-dux: Local Post in Mulsjö." □

LIBRARY NEWS

Dr. W.E. Melberg
SCC Librarian

This will be one of the last missiles that will come from Wisconsin. Florence and I have enjoyed this part of the "philatelic journey". A big thank you to all! The highlights of 1998 included the festivities of CHICAGOPEX 98, A Great Show with tremendous exhibits and SCC activities. And just think, Toddy and Sig Thorsteinsson, from Iceland, honored us by attending this event. The SCC Library Auction of duplicate books donated by members was a big success. It created funds that will help in the move of the library holdings to Denver.

Florence and I enjoyed a Christmas Fest in Virginia with our "Southern Family" and traveled to Washington to see our Jim's new rowhouse near the Union Station. On our way home we "detoured" to Newark/Wilmington, Delaware for the Chapter 13 Christmas Party. The Bergendahls, Grubers, Langs etc. spoiled us royally! What a treat it was to meet all the SCC mainstays. Now I can match names with faces. This group, in my opinion, is tops. Thank you for all the slide shows that you have created. Your expertise is topped by none.

We have begun packing the periodicals and should finish with the books by March so the move can be completed before the May ROMPEX meeting. There will be a *HIATUS* through the summer months while the Denver Chapter gets everything in order. If your Chapter needs items, plan ahead and let me know, I will try to accommodate.

I know that there are missing (not Lost) books (the bane of Librarians: "unreturned books"), not many but a handful. When I pack up our holdings I will make up a list that will be published in the May issue of *The Posthorn*. Please look through it.

Library Donations - October 1, 1998 to December 31, 1998

Cash: Tom Bergendahl, Don Brent, Eric Jarvlepp, Eric Roberts, William Savage, Myrtle Sheets, Arnold Sørensen

Publications:

AFA - Lars Boes

DANMARK FRIMÆRKEKATALOG 1998-99. 376pp. Includes the Faroes, Greenland and Danish West Indies. In color, with coverage of booklets and Christmas seals.

SKANDINAVIEN FRIMÆRKEKATALOG 1998-99. 528pp. Besides the Nordic countries this publication includes Estonia, Latvia and Lithuania.

Tom Bergendahl

SCANDINAVIAN HUMOR. J. Anderson. 216pp.

FILATELISTISK ÅRBOK 1998. Norsk Filatelistforbund. 160pp. The yearly book on Norwegian Philately. The article listing is made available to members upon request.

Frederick Brofos

STAMP DESIGNS OF THE NORWEGIAN LOCAL POSTS. Frederick Brofos. 1998. 36pp.

Ib Eichner-Larsen

SALY'S RYTTERSTATUE AF FREDERIK V. Knud Holm. 19pp. Treatise about the construction of this famous København statue.

FINURLIGE FRIMÆRKER. Ib Eichner-Larsen. 128pp. Another book about stamps from all over the world. This one has 55 stories (In Danish).

Forschungsgemeinschaft

DIE HERSTELLUNG DER BRIEFMARKEN VON DÄNEMARK 1933 BIS 1997 UND GRÖNLAND 1938 BIS 1997. G. Panzner. 72pp.

Paul Jensen (NORWEX 97)

NORWEX 97 - INTERNATIONAL PHILATELIC EXHIBITION (Bound volume)

Gunnar Joos

FACIT SPECIAL 1998-99. Another great edition of the annual Scandinavian catalog. A few changes have been made. The Swedish revenue coverage has been expanded and the Norway section has been revised. Norwegian ship-post is now included along with a new section devoted to Icelandic numeral cancels.

Krause Publishing (STAMP COLLECTOR)

STAMP COLLECTOR 1999 CALENDAR

1998 CATALOG OF ERRORS ON US POSTAGE STAMPS. Stephen Datz. 162pp.

Siggy Thorsteinsson

_RSSKÝRSLA -PÓST- OG SÍMAMÁLASTOFNUNIN - REYKJAVIK (A great number to update our holdings).

Swedish Postmuseum

POSTRYTTAREN - ÅRSBOK FÖR POSTMUSEUM 1998. 200pp. The Yearbook of the Swedish Postmuseum. Great articles, especially one about Sigge Ringström. Donated by Dr. Erik Hamberg.

□

ICELAND

SWEDEN

LARGE
STOCK
including
the...
RARITIES

Send for my
FREE
PRICE LIST!

KARL A. NORSTEN
Box 1069, S-181 21
Lidiägo, Sweden
Fax 011-46-8-731-0244

NORDIA 2001 UPDATE

Alan Warren

Plans are moving along for the first ever NORDIA exhibition to be held outside a Nordic country. Be sure to mark your calendar for January 26-28, 2001 in Tucson where SCC will hold its national convention and the APS will hold its winter meeting, all in conjunction with ARIPEX and the NORDIA 2001 exhibitions.

At the meetings held in Chicago in November, incumbent board members were re-elected: Gordon Morison, Howard Schloss, Donald Halpern, Alan Warren, Robert Lang, and Gregory Frantz. Officers were then elected as follows: President—Gordon Morison; Vice President—Greg Frantz; Treasurer—Howard Schloss; Secretary—Alan Warren. The general rules and the special rules of the exhibition are being finalized in preparation for the publication later this year of Bulletin 1 for NORDIA 2001.

The address for the show's web page has been changed from that reported in the November *Posthorn*. It is now located at <www.nordia2001.org>. Information about the exhibition can be obtained by writing to NORDIA 2001, INC., P.O. Box 59305, Potomac MD 20859.

□

LINDNER T ALBUM PAGES with preprinted stamps

Denmark	pages	DEM	US\$*
1851-1959			
(incl. Schleswig, Thule, DWI)	36	105.00	61.76
1960-1971	15	45.00	26.47
1972-1990	43	129.00	75.88
1991-1997	17	51.00	30.00

Ringbinder 1104 (50 pages)	48.00	28.24
1104 + slip case 814	73.00	42.95
(burgundy/blue/green/tan/black)		

*subject to exchange rate of DEM 1.70/US\$ plus/minus 10%

For surface postage and bankers fee I charge a lump sum of \$10.00

**** Send for list of Michel catalogs and country albums ****

WERNER ZIELNIEWICZ

FRANKENWEG 61, 45665 RECKLINGHAUSEN, GERMANY

APS no. 139105

FAX +49-2361-87487



News From the Home Office

Don Brent

CHICAGOPEX and dues renewals have kept me busy this quarter and now SANDICAL is just around the corner. An important activity here is processing your renewals and while most of you have already taken care of this chore there are a few of you who have been procrastinating. Please take care of it now and save your club the added expense of follow up! As I write this there are 116 members that have not sent in their renewals. If you are one of them please take a moment and send it in today.

In last month's column and on the ballot I listed the nominees for the Board of Directors as "Two-Year Directors" which may have given an incorrect impression that they were to be elected for two years instead of a full four year term. All of the Directors are elected for a four year term with three of the six being elected on alternate ballots. This was designed so that there would be continuity on the Board. I used an old ballot when I set up the printing and it happened to be one from the period after the by-laws were changed and there was in fact an election for two year directors. This was a mistake on my part and I apologize for any confusion this may have caused.

Last month I mentioned that the USPS has changed its regulations regarding forwarding mail and address notification. Things have not gotten any better and in fact it seems as if the various post offices around the country have not figured it out either. If anyone collects, or is even interested in forwarded/returned mail, now is the time because every trip to the PO box is a surprise. Fifty cents seems to be the accepted change, but not always, but what you get for it is anybody's guess. I have gotten whole PHs in various wrappers, fronts, just the address label, and a few different USPS forms in a variety of colors. I do not collect this stuff so please let me know when you have a change of address.

I want to thank Roberta Palen and all the members of the Chicago chapter that made my trip to CHICAGOPEX such a pleasant one. It was a great show. I was particularly pleased to get to meet many of you in person and find we shared many interests both within philately and outside also. I do not think that Sandy will give me enough space here to relate all of the small stories but suffice to say I had a great time and look forward to next year at BALPEX

On a sad note this last Friday I attended the memorial service for Karl Kaup. Karl had been our copy editor for the PH, a life member of SCC, and a really nice guy. We had lunch a few months ago and I was impressed with the fact that here was a person, even though ill, still wanted to do what he could for not just SCC but all of his interests. We will miss him.



In closing I need to note that we gained ten new members and have one reinstatement. Welcome and remember we are here to help you with any SCC related matters. We lost two members in addition to Karl to death and we extend our sympathy to their family and friends. This quarter we also had eleven resignations as some gave up collecting or moved on to other things. I also wish to thank those of you that added donations to your dues renewals. We appreciate your help. THANK YOU! – Best regards, Don Brent

□

MEMBERSHIP STATISTICS

For the quarter
ending 12/31/98

NEW MEMBERS

- 3728 Salim, Muhammad, H9, Al-Mustufa Sq., F16/14 Gulshan-E-Iqbal, Karachi, Pakistan
 3729 Hayford, George, 5 Coronado Ct., Novato, CA 94945
 3730 Haight, Daniel N., P.O. Box 33, Fontana, WI 53125
 3731 Pedersen, Claus, 4708 Royal Troon Dr., Raleigh, NC 27604
 3732 Smith, Michael T., 3059 Edgewood Park Ct., Commerce, MI 48382-4424
 3733 Albertsen, Anfelt K., 31-12 33rd Street, Astoria, NY 11106-2442
 3734 Schaefer, Richard T., 2314 N. Lincoln Park West, Apt 17S, Chicago, IL 60614
 3735 Holman, Gerald N., 4044 Carolina Ave. NE, Salem, OR 97305
 3736 Tjarks, Edward A., 7790 Fairway Woods Drive, Sarasota, FL 34238-2868
 3737 Kenri, Jorma, Mahlanune 11, 02130 Espoo, Finland

REINSTATED

- 2611 Anders, David V., P.O. Box 8, Mickleton, NJ 08056

DECEASED

- 3641 Thorup, Robert T., of Weston, ON Canada Member since 1996
 1998 Mordal, Oscar, of Brooklyn, NY Member since 1976
 L-73/2312 Kaup, Karl, of San Diego, CA Member since 1980

RESIGNED

- | | |
|-------------------------------|-----------------------------|
| 2709 Fricks, E. E. | 3492 Balboni, Christine A. |
| 3684 Larson, John W. | 815 Jespersen, Henry L. |
| 3584 Boatright, Dr. Khwaja P. | 3458 Thompsen, Leo M. |
| 3331 Kruse, Uno | 3619 Liljekvist, Sven-Gosta |
| 3600 Olsson, Ingemar | 3540 Rogers, Michael |
| 3695 Walton, Michael S. | |

DONATIONS

- | | |
|---------------------------------|---------------------------|
| 1095 Robert W. Lang | 1545 Sickels, George W. |
| 2869 Mawhiney, Michael | 2313 Pearson, John E. |
| 1611 Ostergaard, Paul B. | 2080 Warrington, Allan E. |
| 3067 Wolfel Jr., Dr. William E. | 1956 Schloss, Howard H. |

DONATIONS

1338 Aro, Kauko I.	3294 Svensson, Dr. Ernest
973 Littlewood, William H.	724 Lind, Arthur L.
1615 Hedley, Matt	1405 Prestrud, Stuart H.
3226 Bennett, David R.	3053 Klaus, Karl P.
1389 Nelson, Paul A.	1462 Deisz, George
3649 Hanson, Dr. Bruce R.	3693 Herren, Charles W.
2803 Lorentzon, Lars I.	2317 Svenson, Robert H.
2747 Baker, Thomas G.	1561 Hunewell, Marvin D.
1714 Smith, William F.	3275 VanSikkelerus, Joop

CHANGE OF ADDRESS

3013 Page, Andre, 104 Beach #2, Metis Beach Quebec, Canada G0J 1W0
2678 Mann, Charles A., 10195 S. Houghton Rd., Apt #167, Tucson, AZ 85747-9317
1095 Lang, Robert, 23 The Horseshoe, Newark, DE 19711-2066
2266 Rahialma, Kari, Vesikuja 9C49, FIN-00270 Helsinki, Finland
2612 Eggen, Dale, PO Box 70577, Plaza Station, Sunnyvale, CA 94086-0577
2974 Gertenbach, W., 344 Benefit Street, Providence, RI 02903
3418 Daly, Brian L., 12 New Freedom Rd., Medford, NJ 08055-3938
2964 Rees, Charlotte, 4666 Coralwood Cir., Carlsbad, CA 92008-3708
3635 Burns, Paul A., 9401 69th Ave E, Palmetto FL 34221-9267
3375 Ozdinc, Armagan, 827 E Cub Humt Ln., West Chester, PA 19380-1744
3683 Savage, Dan, PO Box 282, Cornwall ON, Canada K6H 5T1
3517 Haagensen, Soren, 1 Standish Drive, Morristown, NJ 07960
3304 Clayton, Norman R., 555 Cedar Bay Dr., Apt. 2106, West Bend, WI 53095
3547 Dougherty, Dean, 508 Beechwood Drive, Kennett Square, PA 19348
3365 Melberg, James K., 641 Third Street, NE, Washington DC 20002
3311 Nadler, Stephen D., 6276 S. Pike Drive, Larkspur, CO 80118
1985 Engdahl, David A., 52 Heath Aster Lane, Lehigh Acres, FL 33939-7351
2027 Lengacher, Donald H., P.O. Box 805, Boring, OR 97009
2276 Engblom, Dennis, 6323 139th Place SW, Edmonds, WA 98026



DENMARK, DWI, FAROES, FINLAND, ÅLAND,
GREENLAND, ICELAND, NORWAY and SWEDEN

1855-1998 mint, used, FDC, booklets, postal stationery

Comprehensive price list free on request

HOLMGREN STAMPS

Acktjara 6303, SE-82191, Bollnas, Sweden



Editor's Notes

Sandra Downs

With the formation of the new committee to oversee the future direction of *The Posthorn*, I'm glad to report that many of the ideas, comments, and criticisms received from readers will receive serious attention as we look at how our magazine delivers information to you. There has been a wonderful outpouring of support this past quarter in terms of articles received, enough that I can pre-plan the May issue now. I apologize to those whose articles didn't fit in this issue; your articles are planned to run in May. In terms of club information, Roger Fontaine will be discussing the circuit system, and Dr. Dan Laursen encourages members interested in the Danish wavy-line definitives to form a new study group. We'll also see articles from Dr. William Benfield on the 1902 Danish Essay, and Sigurdur Thorsteinsson on the Royal Mails of Iceland.

In the meantime, I'm saddened by the loss of Karl Kaup, who was an invaluable resource over the past year. He bowed out this fall when the tumor began to affect his communication ability. Not being aware of his condition from the outset, I talked to his wife Donna and discovered he was suffering from the same sort of tumor my sister has. She continues to remain stable and in good spirits, although she certainly misses being in Greece.

Ed Menninger has fallen ill and has stepped out of the Business Manager position; we need a replacement. In the meantime, direct your ad requests to me. Our treasurer, Howard Schloss, will handle the financials aspect of the job in the interim.

Ed and I have had a lot of requests regarding small "classified" ads and member ads. When our committee meets this month, we intend to work out the details. In the meantime: member requests for research information always run for free on a space-available basis. You are welcome to send graphics along with your request, but I will edit and reduce as required. Ed established a new ad category you'll see in this issue, the 1/4 page ad (\$20 per issue). While ad rates will likely continue to stay the same through the end of 1999 (since a discount is given for buying ads in all four issues), the committee will be reviewing prices and sizes of ads for the year 2000.

Please continue to send your suggestions and criticisms of *The Posthorn* so we can strive to debut a more useful magazine in 2000 -- with the turn of the millenium, it's time for a change!

ALBUM CLOSED: KARL L. KAUP

A life member of SCC and copy editor for *The Posthorn*, Karl Lee Kaup passed away on December 30, 1998, at age 57, due to a malignant brain tumor. Karl's military career with the U.S. Navy spanned 34 years; he served as a pioneer in the Navy's nuclear submarine program. As Rear Admiral, he worked for the Director, Division of Naval Reactors, Admiral H. G. Rickover, as Assistant of Nuclear Trained Enlisted Personnel Matters. From 1978 to 1982 he commanded the attack submarine USS TUNNY (SSN 682) at Pearl Harbor, Hawaii; the submarine was awarded the Meritorious Unit Commendation and Battle Efficiency "E" under his command. He commanded Submarine Squadron Eighteen at Charleston, South Carolina, from 1984 to 1986 prior to serving as Chief of Staff Commander Submarine Force, U.S. Pacific Fleet, Pearl Harbor, Hawaii. After selection to flag rank in 1987, Rear Admiral Kaup became the Director, Strategic Submarine Division on the staff of the Chief of Naval Operations. Subsequently he commanded Submarine Group Five in San Diego, California from 1990 to 1991 and then served as Commander, Naval Base, Charleston, South Carolina. Rear Admiral Kaup's military awards include seven Legions of Merit and various other personal, unit, and campaign awards.

In retirement, he continued to apply his knowledge to nuclear applications. He joined Commonwealth Edison Company of Chicago, Illinois as the Vice President in charge of the Braidwood Nuclear Generating Station, Braidwood. Karl left Commonwealth Edison in 1996 and formed Argosy Associates, an independent consulting company in San Diego, California.

He is survived by his wife of 30 years, the former Donna Brandal of Seattle, Washington, and his daughters Stacy Kaup of Falls Church, VA, Jennifer Hannon of Coronado, CA, and Amy Vigeant of San Diego, CA. □

SCC CHAPTER 13 DELAWARE 33rd ANNUAL AUCTION

**450+ Lots of Specialized Scandinavian Material
Especially strong in Danish and Icelandic Varieties**

June 29, 1999

**CATALOG FREE ON REQUEST TO NEW BIDDERS!
PO BOX 325, ROCKLAND DE 19732**

Catalog is automatically sent to bidders of past three years

INDEX TO *THE POSTHORN*, VOLUME 55, 1998

Subject Index	Issue/Page
Brent, Don, new SCC Executive Secretary	1/27
Brofos, Frederick A.	4/28
Censorship	
German Censor Marks, "A" Series, WWII	3/7,4/24
DAKA North Atlantic 1998 Catalog (book review)	2/14
Denmark	
Counterfeit Danish Postmarks	2/17
Provisionals (book review)	1/23
Erickson, Raymond (obituary)	2/48
Finland	
Mixed Franking Covers from Finland to Russia	2/3
Mute Cancel #226	4/3
Finnfest	2/24
Frye, Joe F. (obituary)	3/46
Helgason, Halfdan, Vapex speech	1/19
Iceland	
First Mails in Iceland	3/3
Icelandic Trolls	3/9
Iceland Postal Rates (book review)	2/13
I Gildi (book review)	3/22
<i>Italia</i> airship	1/3
Johnson, Walter (obituary)	4/47
Kalmar Nyckel	3/15
Mohr, Knud (interview)	2/6
Nordia 98	2/35
Nordia 99	4/24
Nordia 2001	
Fundraising	4/29
Publicity Insert (non-paginated)	3/-
Update	4/46
Norway	
Norwegian Gems of 1888 and 1937/38	4/18
Rates to German-Austrian Postal Union	1/9
5 Øre Surcharge, Thick Throat	3/13
Paulson, Robert (obituary)	
Scandinavia	
Good Postal History	2/10
Scandinavian Area Awards	2/27,3/32,4/45
Scandinavian Literature Notes	1/33,3/33,4/33
Scandinavian Sea Rescue Services	2/31,4/9
Transfers & Re-entries	1/44,2/34,3/36,4/36
Scandinavian Collectors Club	
Chapter 13, Genesis of	2/19
Chapter News	1/41,2/39,4/39
Chicagopex	2/42,3/41
Editor's Notes	1/40,2/38,3/42,4/42

Financial Report 1997	2/23
Meeting Schedule	2/22,3/23,4/25
Library News	1/36,2/36,3/25,38,4/38
Library Will Move	3/21
Minnesota Stamp Expo	3/24
News from the Home Office	1/32,2/46,3/43,4/43
President's Letter	1/29,2/27,3/31,4/31
Robert D. Lipscomb A-V Library	1/32
Stamp Mart News	2/25
Scandinavian Philatelic Foundation	2/18,4/37
Schnell, Roger G., Pelander Award	1/17
Siberia, Via	3/18,4/21
Sweden	
Charta Sigillata (book review)	2/13
Gustavs, The (poem)	4/26
Trenchard, Herbert A.	4/28
Winnipex	2/24,4/27

Author Index

	Issue/Page
Bendix, Jan	
Counterfeit Danish Postmarks	2/17
Bergendahl, Tom	
"A" Series of German Censor Mark of WWII	3/7
Norway Thick Throat 5 Øre Surcharge Stamps	3/13
Norwegian Gems of 1888 and 1937/38	4/18
Brent, Don	
Introduction as new SCC executive secretary	1/27
News From the Home Office	2/46,3/43,4/43
Downs, Sandra	
Editor's Notes	1/40,2/38,3/42,4/42
Fontaine, Roger	
Royal 2000 (Winnipex)	2/24,4/27
Fraser, Ed	
Finland's #226 Mute Cancel's Long History	4/3
Gruber, Alfred A.	
Denmark via Siberia to Shanghai: An Intriguing Cover	3/19
Genesis of a Chapter	2/19
Gustavs, The (poem)	4/26
Icelandic Trolls	3/9
Kalmar Nyckel is Commissioned	3/15
Rescue of the Airship <i>Italia</i> Survivors	1/3
Helgason, Halfdan (speech at Vapex)	1/19
Jarvlepp, Eric	
Supplementary Notes to the A Series German Censor Marks WWII	4/24
Jensen, Paul	
Postal Rates from Norway to the German-Austrian	
Postal Union 1850-1867	1/9

Lang, Bob		
Chapter News		1/41,2/39,4/39
News From the Home Office	1/32	
Robert Paulson		1/48
Scandinavian Sea Rescue Services		4/9
Laursen, Dan		
Denmark's Provisionals (book review)	1/23	
I Gildi '02-'03 (book review)	3/22	
Melberg, W.E.		
Library News		1/36,2/36,3/25,4/38
Nelson, Paul		
Nordia 2001 Fundraising		4/29
Quinby, Roger P.		
President's Letter	1/29,2/27,3/31,4/31	
Rindone, Wayne		
Walter Johnson		4/47
Roberts, Eric		
Scandinavian Stamp Mart News		2/25
Sahlstein, Janne		
Mixed Franking Covers from Finland to Russia		2/3
Schnell, Roger G.		
DAKA 1998 North Atlantic Catalog (review)		2/14
Schumann, Stephen D.		
Raymond Robert Erickson		2/48
Thorsteinsson, Sigurdur		
First Mails in Iceland		3/3
Good Postal History		2/10
Vogel, Hal		
Via Siberia Mail		4/21
Warren, Alan		
Charta Sigillata (book review)		2/15
Iceland Postal Rates (book review)		2/13
Joe F. Frye		3/46
Nordia 2001 Update		4/46
Scandinavian Area Awards		2/27,3/32,4/45
Scandinavian Literature Notes		1/33,3/33,4/33
Scandinavian Philatelic Foundation		2/18,4/37
SCC Library Will Move to New Home		3/21
Transfers & Re-entries		1/44,2/34,3/36,4/36
Trenchard, Profos Named to Writers Hall of Fame		4/28
Weber, Lennart		
Interview with Knud Mohr		2/6

□



*THE INTERNATIONAL
AUCTION HOUSE*

- in Scandinavia

Auctioneer and buyer of rarities
and major collections of the world.
Interested in selling?

Contact us already today!

**Auctions 1999 in
Malmö** _____

March 12-13
order the catalogue today

October 1-2
closing date August 1 st.

AuctionHouse international

Postiljonen

We value your collection.

Box 4118 · S-203 12 Malmö · Sweden · Phone +46 40 25 88 50 · Fax +46 40 25 88 59
Internet: www.postiljonen.se · e-mail: stampauctions@postiljonen.se



Jump on the **NORTHLAND BANDWAGON**

Through the years Northland Auctions has emerged as one of the premier auctioneers of Scandinavian philately. Some major properties we've had the privilege of offering recently include the collections of:

- John S. Siverts
- Roger A. Swanson
- Charles Luks
- The "Derby" Collection
- Arthur Lind
- Christine Blinn
- The "Waverly Hoard"

Whether your collection is large or small, why not join this growing list of "name" collections and take advantage of our 22 years of market expertise and personalized service. Other benefits you'll receive include:

- Beautifully illustrated Catalogs
- Large International Client Base
- High (often record setting) Prices
- Low Commissions
- Liberal Advances
- Fast Payment
- Free Shipping Insurance



1-800-950-0058
FAX 1-201-403-2601

Get the Facts . . .
Call Today
CONSIGNMENTS WELCOME



Since 1975

NORTHLAND CO.

Internet: <http://www.philatellic.com/northland>
E-mail: northstamp@aol.com