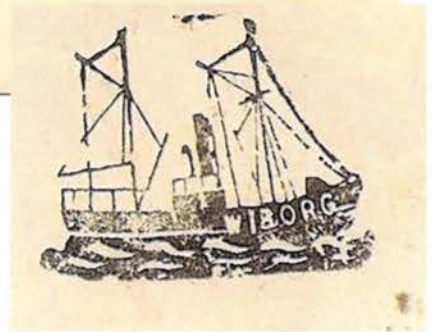


The POST HORN

WIBORG Ship cancels
Page 16



**Special
Membership Offer
Continues:
Free FACIT
(Page 4)**



**Double Censoring in Finland...
A failed intrusion (Page 5)**

WWW.SCC-ONLINE.ORG

Buy and sell stamps at auction



Online stamp auctions

Online auctions are held at 6 pm on alternate Sundays (even weeks) at bruun-rasmussen.dk.

The auctions feature material in all categories of stamps, postcards and postal history.

Traditional auctions in Copenhagen

Besides the online auctions, Bruun Rasmussen conducts traditional stamp auctions twice a year in Copenhagen.

For further information, visit us at bruun-rasmussen.dk

Contact Lars Godsk Jørgensen at the stamp department, e-mail: lgj@bruun-rasmussen.dk or tel: +45 8818 1211.



BRUUN RASMUSSEN
AUCTIONEERS

Baltikavej 10
DK-2150 Nordhavn
Tel +45 8818 1111

Søren Frichs Vej 34 D
8230 Åbyhøj
Tel +45 8818 1100

Upcoming auctions
please visit us at:
bruun-rasmussen.dk



Official Publication of the Scandinavian Collectors Club
Published Quarterly Since 1943

Vol. 70, No. 4

November 2013

Whole No. 277

Table of Contents

Double Censoring in Finland: A Failed Intrusion on the Postal Delivery System.....	Roger Quinby.....	5
The “WIBORG” Ship Silhouette Cancels.....	Ed Fraser	16
First-Day Covers of Norway’s NK 200, 202, 205, 212	J.J. Henry	24
SCC and Show News:		
Special Facit/SCC Membership Agreement Made.....		4
Albums Closed: Jeremiah Arthur Farrington, Jr. ...	Alan Warren.....	34
Under Review:		
<i>FACIT 2014 Special</i>	Alan Warren.....	30
<i>Norgeskatalogen 2014</i>	Alan Warren.....	31
<i>Kingdom of Denmark: 1851 Rigsbankskilling and 1854-69 Skilling Adhesives through the Post and Abuses</i>	Alan Warren.....	31

Departments

Auction Marketplace.....	20	Scandinavian Literature Notes	36
Chapter Reports	35	SCC & Scandinavian Show Calendar.....	33
Editor’s Letter from Scandinavia.....	2	SCC Auction #33	40
From the Stacks.....	26	SCC Auction #32 Prices Realized.....	44
Member Advertisements	32	SCC Chapter Meetings & Contacts	34
News from the Home Office	39	SCC Member Services.....	16
President’s Letter	3	SCC Officers	29
Scandinavian Area Awards	33	Transfers and Re-Entries	25



Editor's Letter

from Scandinavia, kind of...

By Wayne L. Youngblood

Member Advertisements

As I occasionally mention, one of the SCC's best-kept secrets that shouldn't be one is the fact that we offer free membership ads to members.

These classified-style advertisements allow you to locate material you are searching for or even sell an item or two that no longer meet your collecting needs.

Some ads run for multiple issues, others may only be a one-time insertion. Either way, it's up to you! As long as we have room, we're happy to help with your collecting needs. A simple ad, emailed to the editor, should fit the bill. Do remember to include whatever information you wish to have for other members to contact you. This can include physical address, email address or both.



Editor's Letter

As your editor, it's my pleasure (and my duty) to briefly address something in this space I feel should be covered (whether it's general hobby issues or society business, specifically), visit with the membership or share something I feel is amusing or otherwise interesting.

Such is certainly the case with my column in the August issue, where I detailed (sensibly, I thought) my forced change of address due to a post office closing resulting specifically from mismanagement of a property by a greedy landlord.

At least one member (and I hope only one) was apparently offended, stating my editorial can't help but alienate *"conservative Scandinavian readers who think that businesses such as nearly obsolete communications enablers ought to be run like businesses and not as charities."* He went on to write that I should not *"tilt at a windmill from your bully pulpit to further a melodramatic concern for a lost social 'entitlement'?"*

What he missed, of course, is the fact the U.S. Postal Service isn't a "business" in the traditional sense of the word – it never has been. As I stated, full and equal access to the mail system (a vital piece of our social and national security infrastructure) should be a right – not a privilege for those who can afford it. Those are not fighting words, they are fact. It's a bit different than losing the corner store that can't turn a profit.

Although not all editors function impartially, I try my best. I do not insert personal agenda into my writing and it is never my goal to intentionally inflame or offend members. That having been said, it is impossible to produce cogitative writing that will not occasionally offend. If I do, please accept my apology in advance. ...and I'll still defend fact. ■



A Journal of Scandinavian Philately
www.scc-online.org

EDITOR, GRAPHIC DESIGNER and interim BUSINESS MANAGER

Wayne L. Youngblood
4615 Lindell Blvd Apt 1102
St. Louis MO 63108
wystamps@gmail.com

MEMBERSHIP INQUIRIES

Steve Lund, Executive Secretary, PO Box 16213, St. Paul, MN 55116
email: steve88h@aol.com

EDITORIAL BOARD

Bjorn Mugerud, Norway
Paul Nelson, Arizona
Ross V. Olson, Minnesota
Roger Quinby, Georgia
John R. Sabin, Florida
Alan Warren, Pennsylvania

Contributors are asked to send their submissions to the Editor. Electronic submissions are preferred. Text should be in Microsoft Word and include bibliographic references. Graphics should be scanned at a minimum of 300 dpi, preferably in .tif format. Color photocopies of illustrations are acceptable if electronic versions are unavailable. Contact the Editor with any questions. Unless otherwise requested by the author, published material may be reproduced on the SCC Website, www.scc-online.org.

POSTMASTER: Send address changes to The Posthorn, SCC Executive Secretary, PO Box 16213, St. Paul, MN 55116. © Copyright 2013 by the Scandinavian Collectors Club, a 501(c)3 nonprofit organization. All rights reserved. Permission to reprint must be obtained from the Editor. The opinions expressed are those of the authors and not necessarily endorsed by SCC, its officers, or staff.

The Posthorn (ISSN 0551-6897) is published quarterly by the Scandinavian Collectors Club, SCC Executive Secretary, PO Box 16213, St. Paul, MN 55116. Membership, including subscription, \$30 per year; \$35 in Canada and \$40 for addresses outside North America. Contact the Executive Secretary for membership and change of address. Advertising rates and terms available from the Business Manager. Periodical postage paid at St. Paul, MN 55116 and at additional entry offices.

President's Letter

By Roger Quinby

Face it, Facit promotion is special

As I write the November president's message, we are well into the 2014 membership drive featuring the *2014 Facit Special Catalogue*, free with a new three-year membership or a renewal for three years. We are running membership and renewal drive concurrently with rollout of the Club's new website.

As of this writing we have 20 new members and 37 renewals taking advantage of the special offer. The first ads bringing the message of the SCC to the wider philatelic community have appeared in *Linn's Stamp News* and the *American Philatelist*. Ads have been purchased to run in the ASDA magazine as well. Ads will run through January.

This is the first time we have rolled out an aggressive ad campaign to promote SCC. Like the APS and many specialized stamp societies, we face a changing and diminishing stamp collecting environment and unless we promote and engage collectors we will continue to slowly disappear. Look for these ads and see if you might persuade a member of your local club to investigate the possibility of joining the SCC.

In recognition of the challenges we face, we are very close to going live with our new website, now in heavy beta testing. The "official" cutover date is Jan. 1, 2014. This new site offers many advantages over the old site, some of which have already been discussed in this letter. The most important feature of the new website is a searchable database for library holdings, although not all listing may be available when we cut over. Nevertheless, we will have a site that will be updated regularly, offering a news section with current updates of SCC events, meetings and happenings. Current news on the library-sponsored auction, stamp mart, book reviews will also be displayed. Overseas members will be able to download *The Posthorn*, thus having it sooner and at a much-reduced price. We are hopeful this will entice Nordic collectors from around the world to join the SCC and take advantage of this new delivery option for our journal.

Chris Dahle, our new webmaster, is completing his final apprenticeship for accreditation as a national APS judge at Chicagopex this month (we wish him the best), after which he will have more time working with the developer, BigWow, to transition the website from beta site to fully operational status. We are very grateful to Chris, Paul Albright and all the other volunteers who have identified problem areas and suggested fixes. Some text needs to be updated; Paul Nelson and Alan Warren will be "proofing" content during the next month or so.



Wanted:

Advertising Manager for *The Posthorn*

The SCC is in urgent need of an individual to take on official duties of advertising manager.

This includes helping advertisers meet deadline for advertising copy, billing, collecting and soliciting new advertisers. While this is not a major time commitment, it is a vital position to our organization.

Please contact the editor for more information. Thank you!

Email Notice - Passwords

Once the new site goes “live,” those members who have left an email address with Executive Secretary Steve Lund will be sent an email with instructions to file a password to access certain areas of the website restricted from the general public. For example, membership information will no longer be available to non-members.

A New Generation of Leadership

At the annual meeting in June, Kauko Aro indicated an interest in retiring as Treasurer at the end of his term ending Dec. 31, 2014. Although SCC elections for officers and several directors are a year away, it is not too soon to think about running for one of the open positions. It is very likely that other positions will open next year as well. Our Club needs and welcomes members to assume leadership positions serving as an officer or director. Following a long-standing tradition, next April, I will formally nominate immediate past-president Mats Roing to serve as chairperson of the nominating committee.

May I Have Your Attention

We need to fill two important positions: Business Manager for *The Posthorn* and Publicity Director. I am sure you are all tired of these requests being repeated in every issue of *The Posthorn*, but these posts are essential for the successful management of the SCC. So, where you are, please contact myself, Alan Warren or Wayne Youngblood. Our contact information is printed nearby.

Roger Byrne

It is with great sadness that we report the passing of Roger Byrne last month. Roger has served as Australian coordinator since 2009. Sue and I had the opportunity to visit with Roger and his wife, Dianne, during our trip to Australia last spring.

...and Finally

As this is the last general communication of the year from me, let me take this opportunity to wish you a wonderful Holiday Season and a Very Happy New Year. ■

Special Facit/SCC Membership Agreement Made

Through a special arrangement with the publishers of the Facit Catalog, The SCC is able to make a very advantageous membership offer to new and renewing members of SCC. Due to shipping costs, this offer is open only to residents of the United States and Canada.

New members:

A three-year prepaid membership will include a complimentary *FACIT 2014 Special and TreSkilling Yellow* book (while supplies last). The time period includes remainder of 2013, plus 2014-2016 for a total of \$90. The cost of Facit alone is approximately \$90 (\$87 plus \$3 shipping)! Payment must be made by check drawn on a U.S. bank or PayPal. No credit cards. This represents a savings of \$105!

Life members:

Those who are already Life members may order a *2014 Facit Special* for \$60, postpaid, a savings of 33%. Payment must be made by check drawn on U.S. bank or PayPal. No credit cards.

Renewal membership:

A prepaid three-year renewal membership (2014-16) with *FACIT 2014 Special* for \$125. Payment by check drawn on US bank or PayPal. No credit cards. This is a savings of \$70.

Delivery of the 2014 Facit is expected in early October. Participants will be notified when the catalog is available for shipment. Enjoy this fabulous offer, as it will not likely be repeated for another decade, if then! ■

Double Censoring in Finland:

A Failed Intrusion on the Postal Delivery System

Roger Quinby

Introduction

Finland embarked on a comprehensive postal censoring program in August 1914 that included censoring all mail to and from abroad, as well as all inland mail with few exceptions for official and diplomatic letters. Insured and registered letters, parcels and mail in international traffic were subject to “active” censorship; that is, opening and inspection of the contents of the envelope or package. Most ordinary inland letter mail, including postcards and official forms (money order cards, parcel cards and so forth) were also subject to censoring, but this mail was subject to cursory or “passive” censorship unless randomly selected for further inspection or the censor noticed a name or address on a restricted (secret) list.

The censor offices throughout Finland operated under the supervision of the Censorship Committee at Helsinki. The Committee consisted of President Holmberg and the following members: Army Captain Obolenskij; Mr. Kanninen, from the Office of the General Governor for Finland; Mr. Golenko, of the General Board of Printed Matters; and Mr. Virkberg, of the General Post Office. The secretary of the Committee was staff Captain Slusal.¹

The Russian Sixth Army was the overseer of the Finnish Censorship Committee and, shortly after the outbreak of hostilities, Finland was put under martial law. The Governor General for Finland was then only responsible for administrative matters. He was put under the military command of Finland. The Governor General tried to be active towards Censorship Committee (i.e., minimize postal censorship), but without success.²

Throughout the war, censorship responsibilities placed a considerable strain on the Finnish Government Post Office (FGPO). It was especially difficult maintaining delivery schedules and the financial burden was enormous as the post office was required to subsidize all payroll and administrative expenses for the 10 censorship offices established throughout Finland.

The censor offices operated under the ultimate supervision of the Russian Sixth Army through the Censorship Committee, as well as the Governor General for Finland and the Russian Ministry of the Interior. Operating rules frequently changed, resulting in redirecting outgoing mail and mail from abroad or Russia from one censor location to another or establishing new requirements for the censoring of the mail.³

Place of First Censor	Earliest	Latest
Nikolainkaupunki	Sept. 6, 1916	Jan. 3, 1917
Tornio	Aug. 16, 1916	Feb. 26, 1917
Wyborg	Nov. 17, 1916	Jan. 17, 1917
Turku	Jan. 2, 1917	Jan. 2, 1917
Helsinki	None	None
Oulu	Sept. 8, 1916	Jan. 25, 1917
Pori	Dec. 20, 1916	Dec. 20, 1916
Kuopio	Sept. 9, 1916	Oct. 7, 1916
Tampere	None	None
Raumo	None	None

Double Censoring

The Censor Committee advised the Finnish postal authorities on Aug. 14, 1916, of a new rule that all mailed items were to be “double censored,” that is, domestic mail was to be censored at both the departure censor office and the destination censor office. Then, on Aug. 27, 1916, a clarifying bulletin was issued by the president of the Censorship Committee that instructed all postal deliveries, which were

International stamp auctions
ENGERS frimerker

Klundbyvn. 103, N-2836 Biri, Norway. Tel.: 61 18 15 55. Telefax: 61 18 17 37. e-mail: post@engers-frimerker.no

YOUR PARTNER IN BUYING AND SELLING



From a phantastic coll. Denmark, sold for NOK 510.000 in sale 95

"Variety 1830" in complete sheet

Our international profile and trust bring exciting material to our auctions in Oslo every spring and autumn.

Great philatelic knowledge, 50 years of experience and our own authorized expert for Norway, as well as the best contacts within international expertizing give you the best guarantee for serious treatment and maximum profit from your consignment.

WELCOME !

For detailed information, price lists, agenda, latest auction catalogue etc. visit our homepage:

www.engers-frimerker.no

subject to censoring, to be directed to the senior censors of the censorship office closest to the departure post office. After inspection, the mail was then forwarded to the assigned censorship office for the receiving addressee.⁴

At first the FGPO resisted this rule because there was a shortage of censors and it imposed a major financial burden on the post office. Mr. Jamalainen, the Postmaster General, wrote on Sept. 9, 1916, to his superiors that huge problems would be expected from double censoring. It was not the censoring work alone that added a huge burden to the post office, but readdressing and rerouting of the postal deliveries to another censor station before final delivery would greatly overload the postal transportation and delivery system and unnecessarily delay the delivery of the mail.

According to Mr. Jamalainen, he informed the Censor Committee that the Wyborg post office alone would require at least 30 new postal clerks, although in the end only five new censors were hired. He suggested in his letter a more flexible system for the most senior censors to make their own decision on which deliveries were to be sent for double censorship and which were to be sent directly to the addressee. The Russian military authorities rejected the Postmaster's recommendations and, although this rule would prove to be onerous, the FGPO ultimately relented and ordered double censoring to begin Sept. 21, 1916.⁵

Double censoring required censor inspection at both departure and receiving post office censor offices. For instance, a letter from the city of Heinola addressed to the city of Lahti (only 30 kilometers from each other), first traveled via Lahti to Kuopio and then back, bypassing Lahti to Tampere for censoring second time and then to the final destination in Lahti. Traveling back and forth took one week or longer. Mail sent from one post office to another post office within the same censorship district would have to be inspected by a second censor from the originating district office. This requirement for double censoring local mail was soon abandoned, but the public noticed long travel times and many people decided to curtail their use of postal services.



► **Figure 1. Censored on departure from Tornio well before official “double censoring” on Aug. 15, 1916, and then on arrival at Helsinki, oval CS No. 18, dated Aug. 4, 1916, according to the Julian calendar. This card, which did not require special rerouting to either the departure or destination censor office, was handled with unusual efficiency. This item has been examined and certified by Jorma Keturi as the earliest known double-censored cover.**



► **Figure 2. Oulu, Sept. 9, 1916, to Helsinki. First censored at Oulu with a straight line “Tark 7” (Inspected by Censor 7), mark, then to Helsinki, Sept. 9, 1916, and again passed by the censors and struck with an oval date stamp Aug. 30, according to the Julian calendar.**

Implementing Double Censoring

According to Olamo,⁶ official double censoring went into effect in Wyborg on Sept. 24, in Helsinki on Oct. 3, Turku on Oct. 14 and at the other locations, Pori /Björnborg, Oulu, Rauma, Nikolainkaupunki/Wasa, Tampere and Tornio on Oct. 28. However, in fact, Helsinki, Tampere and Rauma never censored outgoing mail.

Early Double Censoring

Apparently, the Censor Committee had advised the censor offices before the official date, because double censoring has been



► Figure 3. Nikolainkaupunki, Oct. 20, 1916, struck with dateless passive censor mark without town identification, then censored at Abo/Turku and struck with a dateless circular general censor stamp with ink spots showing in the center. Collection of Jorma Keturi.

found well before the official order went into effect. In an article by Hannu Forsblom, "About Double Censoring,"⁷ one double censored cover is noted with the comment that this picture postcard was the only item known to him. The card described by Forsblom was addressed to Äänekoski, postmarked at Kuopio and censored there Sept. 14, 1916, sent to Nikolainkaupunki, where it was censored again, Sept. 16, and then finally sent to Äänekoski,

Sept. 17. This card confirms Olamo's report that double censoring has been found to exist well before the order officially went into effect. Were these "early" double censored objects part of a series of tests to ascertain the feasibility of the program? Without written directives and other archival documents



► Figure 4. Censored at departure in Nikolainkaupunki, Sept. 15, 1916, with censor stamp 17 with ink blotches in center, to Björneborg/Pori and censored on arrival with a general oval date stamp, Sept. 3, according to the Julian calendar. Collection of Jorma Keturi.

as references, I am left to speculate why these objects were subject to censoring at both the departure and arrival censor offices. See Figure 1.

Double Censoring Unravels

If all letters, official cards, forms and other objects that traveled across censor districts (such as Wyborg to Nikolainkaupunki) were subject to double censoring from about the time the order was implemented, then double-censored objects should be rather common. Nevertheless, it appears that double-censored objects are not common; in fact, they are very difficult to find. There must be an explanation for this apparent inconsistency because there were still great quantities of mail handled by the General Post Office in 1916-17. One reason is that the Censor Committee quickly appreciated the burden and futility of double censoring local mail and did not enforce the requirement. Thus, on Oct. 14, 1916, before double censoring was even implemented at seven censor offices, a directive was issued that “local mail deposits” in the cities were exempt from double censoring. On Nov. 6, another directive was issued that postal mailings



► **Figure 5a-b. Woikoski, Feb. 15, 1917, to Wyborg, opened, inspected, resealed, marked with the two-line personal date stamp of Censor 58, dated Feb. 17, 1917, then marked with a Wyborg machine cancel the next day noting departure to Helsinki. The cover arrived in Helsinki the following morning and departed that evening at 7 e (PM) after passing Helsinki censorship noted by the usual oval date stamp with date given according to the Western calendar.**

International auctions in Oslo



We arrange international auctions in Oslo twice a year. Each time with a total turnover of approx. USD 1 mill. The auction catalogues feature 150-200 pages with full colour illustrations.

A complete Internet version is published 3 weeks prior to a sale. 70 to 90 % of items offered are of Scandinavian origin, but frequently important lots from a range of countries are included. So are coins & banknotes and postcards.

We invite you to take advantage of the fine opportunity to sell in one of the best markets for stamps in the world.

There is no government tax on stamp sales in Norway.

More information is to be found on www.germeten.no
Mail: germeten@online.no
Phone: +47 22 44 19 14



already inspected by a war censor should not again be directed to the same censor office.⁸ This directive strongly suggests that there would be no necessity for double censoring local mail; that is, mail addressed within the same censor district office even if it was addressed to a different town within the district. Later, in November and December, a series of rules and rule modifications were introduced to streamline the delivery of parcels, which together with the address card, were also subject to double censoring, but often the “second” mark was a postal circular date stamp and not a second censor mark. However, without the second censor mark, it is not possible to establish that the object actually received the required second inspection from a war censor.⁹

With a substantial amount of mail already exempted from double censoring before the order was fully implemented, the question arises if mail traveling across censor office districts was consistently subject to the double censoring requirement. If the answer is in the affirmative, there should be no difficulty finding double-censored items from the period of September/October 1916 to March 1917. Nevertheless, double-censored covers are difficult to find from this time period, although I did find 14 covers in my collection, several of which are illustrated in this article. Jorma Keturi reports that of more than 1,000 censored covers from this time period, he found only 40 that were double censored.¹⁰ And, only a handful of double-censored covers are known during the last two months of censorship of domestic mail.



► **Figure 6a-b.** This cover to a Helsinki insurance company was inspected and resealed at Tornio on Feb. 24, 1917. Before departure to Helsinki the cover back was struck with the two-line personal date stamp from Censor 8. The cover was then censored a second time at Helsinki on Feb. 26 by the Western calendar. This is the last known double-censored cover from Tornio.

**Our next auction takes place in Oslo
November 8th and 9th 2013**



**The auctionhouse where
the important Norway collections are being sold.
Consign now for our 2013 auction!**

Visit our web-site where you will find the largest selection
of Norwegian covers and stamps at reasonable prices

www.frimerkehuset.no

**F.C. MOLDENHAUER AS
BERGENS FRIMERKEFORRETNING**

Box 258 - Sentrum - NO-5804 Bergen - Norway - Tel.: +47 55 31 44 20 - Fax: +47 55 32 63 55 - Email: frimerke@online.no

Double Censored Objects are Very Elusive

I can only conclude at this time, based on Jorma Keturi's review, an empirical review of nearly 1,000 covers in my collection and from thumbing through many hundreds of dealers' covers, that double-censored objects are very elusive, if not rare, as previously reported in the philatelic press. There are several reasons for this. First, Helsinki, Tampere and Raumo never censored outgoing mail. Second, a notice was issued by the FGPO on Nov. 6, 1916, that reads: "Notice is hereby given to post offices, that postal deliveries, which are already censored at some censorship office, should not be redirected to another censorship office."¹¹ Third, the time period for double censoring was very short, only five to six months and, finally, there was declining interest and motivation among the Russian supervisors for censoring routine domestic mail in Finland. The practice of double censoring gradually disappeared under the weight and futility of the rule itself and the lack of interest by the Russian Army in enforcing censorship rules in Finland at a time when Russia itself was imploding into internal chaos from a disastrous war.

End Game and Aftermath

The double censoring did not last long. The Kerensky revolution in Russia took place in February 1917 and, by March 23, the FGPO informed by circular that domestic mail was free from censorship operations.

Censorship reorganization took place June 13, 1917, in Finland. The main focus was directed to foreign mail exchanges and mails to and from Russia. Of special interest was foreign printed matter. Domestic



► Figure 7. Mail from abroad was frequently subject to censorship at the port of entry and again at the destination censor office. This cover was mailed from Stockholm, Feb. 23, 1917, via Helsinki, where it was struck with the common two-line personal date stamp of Censor 35. It was then sent to Wasa (Nikolainkaupunki), where it was again inspected and struck with a general oval date stamp, which by this point in time was so worn that only illegible ink spots remained.

The Posthorn is your magazine...
We welcome letters to the editor
and articles geared toward all phases
and levels of Scandinavia philately.
Please let us hear from you!



► **Figure 8.** Censor marks from two censor stations does not automatically indicate that an item was subject to double censoring, according to August and September 1916 directives from the Censor Committee. This cover from Ruovesi, mailed July 17, 1916, to Yläne, was first sent to Turku, July 19 for censoring, according to the normal practice of censoring at the destination censoring station, and then to Yläne where it was redirected to Helsinki. It arrived July 21, was censored and released for delivery to the addressee the next day. Censoring at two locations more than doubled the normal delivery time for this cover.

especially multi-marked covers from Helsinki that might have been opened and resealed, struck with a censor's personal mark and then again with a censor's date stamp, showing the date the item was returned to the mail stream.

Author's Note: The original article on double censorship was sent to Jorma Keturi for peer review. He graciously reviewed the article and offered suggestions and new information, which has been incorporated into this article. I am very grateful for Mr. Keturi's assistance. Of course, I am fully responsible for any errors or mistakes in the article. R. Quinby ■

Endnotes:

- 1 Jorma Keturi, email and correspondence, March-November 2006.
- 2 Ibid, reference, Russian military archive.
- 3 See Juhani Olamo, "Postal Censoring in Finland, 1914-1918" for an overview of postal censoring during the war, and Jorma Keturi, email and correspondence, November 2006.
- 4 Jorma Keturi, email and correspondence, November 2006.
- 5 Ibid and Juhani Olamo, "Postal Censoring in Finland, 1914-1918."
- 6 Juhani Olamo, "Postal Censoring in Finland, 1914-1918."
- 7 Hannu Forsblom, "About Double Censoring," *Philatelica Fennica*, 3/1980.
- 8 Postal Regulations: No. II 11792, Nov. 6, 1916) Postal mailings that already once have been inspected by some war censor, must not again be directed to the same or another censor office.
- 9 Ibid.
- 10 Jorma Keturi, email and correspondence, March-November 2006.
- 11 FGPO official notice: Nov. 6, 1916.

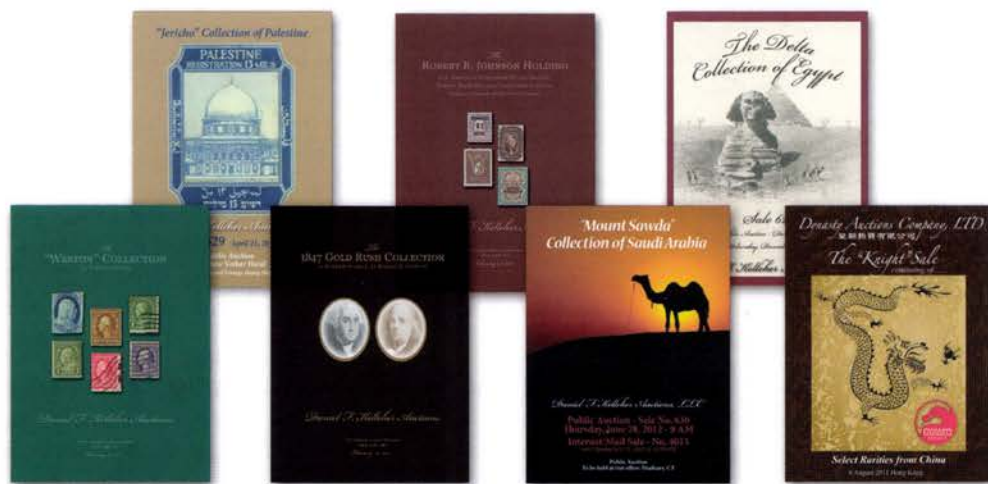
mails were also screened against secret name lists, but not marked.

A Note of Caution

"Double censored" objects appear throughout the entire period of WWI censorship in Finland, but not all the items are related to the orders of August and September 1916. Other examples of "double censorship" are noted on redirected mail. In such cases the mail was censored at each destination censor office in accordance with standing rules; or on mail from abroad where the mail was first censored at the arrival port censor office and then again at the destination censor office. One further comment might be mentioned here; namely, that multiple censor marks on a cover do not automatically signal double censorship,

“Your Name” Here.

The greatest distinction when it's time to sell is YOUR NAME on the cover of a Kelleher Catalogue.



That's right, at Kelleher we have ALL the resources to produce the most luxuriant timeless reference catalog for YOUR most specialized collection in YOUR NAME. We will take great pride in bringing your important Scandinavian collection to market and in supporting every detail.

You will deal with Owner Philatelists of the 128-year old Kelleher firm who will handle every step of the process including each individual lot selection for YOUR NAME sale—individual lots, one at a time, the

same way you acquired them and tailored specifically to suit your needs and the markets.

Penetrate International markets with America's only Global auction house with a fully staffed office in Hong Kong and marketing that reaches hundreds-of-thousands of clients all around the world, as well as representatives in most major markets!

All available to you now! Join us now and find out how to achieve the success that your collection deserves.

Quite frankly, there is no better venue in the world for you when it comes time to sell your cherished Scandinavian Area collection.



Kelleher Auctions

Daniel F. Kelleher Auctions, LLC

America's Oldest Philatelic Auction House • Established 1885

info@kelleherauctions.com

www.kelleherauctions.com

60 Newtown Road, PMB 44

Danbury, CT 06810

203.297.6056 • Fax: 203.297.6059



The “WIBORG” Ship Silhouette Cancels

Ed Fraser

Over the years, there have been many brief descriptions and various Type numbers assigned to the picturesque Finnish ship cancels of the late 19th and early 20th centuries. Somehow, it is hard to find good drawings or pictures of three of these - two of which are often indistinguishable in poor illustrations or weak cancellation strikes.

My brief focus here is on the “WIBORG” cancel, because it seems the most “unrecognized” and generally gets mixed in with the much more common “HELSINKI” ship cancel. I’ll include some illustrations of the “HANGÖ” ship cancel as well. Although the HANGÖ cancel is even scarcer, it often is found in very blurry strikes, which then might accidentally get confused with the other two.



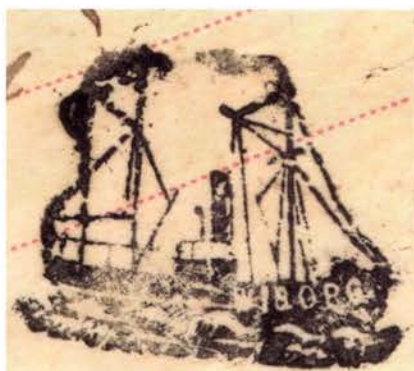
The HELSINKI cancel has the negative that numerous strikes were applied for collectors at some point around their time of general usage, but the marketplace has absorbed them over time. This philatelic favor canceling caused serious controversy among philatelists when it was done, but perhaps

◀ **Figure 1. A very unusual “WIBORG” ship cancel actually used to cancel the stamp. Very few are known!**

SCC Member Services & Contacts

Stamp Mart (USA)	Viggo Warmboe, 2740 FoxgateDr. Minnetonka MN 55305	viggo62@comcast.net
Stamp Mart (Canada)	Roger Fontaine, 9 Rochester Ave. Winnipeg, MB,R3T 3V6, Canada	stampman@mts.net
Website (www.scc-online.org)	Mats Roing, 89 Summit Way #2 Gardener MT 59030-9382	mr22841@gmail.com
Membership Inquiries	Steve Lund, PO Box 16213, St. Paul MN 55116	steve88h@aol.com
Local Chapters	See list in <i>The Posthorn</i>	See list in <i>The Posthorn</i>
Helpers' List/ Traders' List	George Kuhhorn, PO Box 4486, Emerald Isle NC 28594	geokuhh@starfishnet.com
Complimentary Classified Ads	Wayne L. Youngblood, 4615 Lindell Blvd Apt 1102, St. Louis MO 63108	wystamps@gmail.com
Library Services	Paul Albright, 4615 Hampshire St., Boulder CO 80301-4210	palbright@wiche.edu
Study Groups	See list in <i>The Posthorn</i>	See list in <i>The Posthorn</i>

► **Figure 2.** The **WIBORG** ship cancel (right), and the **HELSINKI** ship cancel (far right). The most easily distinguished difference is the ship name “**WIBORG**” on the hull. Often, only a few letters of the name are visible. If not, cancel differences can appear slight. This **WIBORG** strike shown here, from a cover dated June 13, 1903, is extraordinarily clear, and is not typical of most strikes encountered by collectors and students.



there turned out to be some positive... this long-ago increase in supply gave collectors an opportunity to more easily obtain examples of nice strikes. Apparently, though, this didn't happen for the **HANGÖ** or the **WIBORG** cancels.

They are scarce. The **HELSINKI** cancel, in contrast, was also used over a longer period – and is found on much more mail.

Information provided by Johan Snellman in Finland in personal emails has added some information, including estimates about the periods of usage. Several years ago he noted that usages were known for the **HELSINKI** ship cancels from Oct. 3, 1894, to Sept. 3, 1907. (He also notes there are 2 types – a larger and a smaller version, but that is another topic to be written about!)

Snellman also noted uses of the **WIBORG** ship cancels from June 13, 1903, to May



◀ **Figure 3.** Examples of a few typical nicely struck **WIBORG** ship cancels.



◀ Figure 4. Examples of the "HELSINKI" ship cancels, which are frequently found as exceptionally clear strikes.

▼ Figure 5. A comparison of "HELSINKI" and "WIBORG" stern areas. Here two typical "imperfect

strikes" add challenge to proper identification of the two cancellations.

▼ Figure 6. Examples of the "HANGÖ" ship cancel. Two "fairly clear" strikes are found on this postcard. Note the ship goes in the opposite direction from either the "WIBORG" or "HELSINKI" cancels. A blow-up of the marking appears nearby.



"Helsinki" has extra line here & has boom extend beyond stern (beyond dashed line). It doesn't always show well.



WIBORG cancel



► **Figure 8.** An example of the “SAVONLINNA” ship cancel, which is not likely to be confused with any others. The franking on the reverse side of this cover is also canceled with the ship cancel. Johan Snellman noted usages from July 26, 1899, to July 24, 1902. An enlargement appears below.



26, 1912, and for the HANGÖ ship cancels from June 28, 1904, to June 18, 1911. All of the uses I have examined fit within these periods, except for the WIBORG use shown in Figure 1, from

July 1, 1902. That’s interesting for two reasons. It is almost a year earlier than the limited number of other examples noted, including Johan Snellman’s date range listing, and the cancel is on the stamp itself. Unlike all the other Finnish ship silhouette cancels, only the Wiborg ship cancels are rarely seen used to cancel stamps. I can reference two known examples – the one in Figure 1 (July 1, 1902), and another dated June 13, 1903! Perhaps early in their usage it was directed to specifically not use this handstamp as a canceler, even though all other Finnish ship cancels of the period are often seen used as cancelers. (In Figure 1, while both the Perkjärvi and Wiborg cancels show dating in 1902, I wonder why the 21-day difference, with the Perkjärvi cancel being on July 22. The distance was perhaps only 30 miles. Perhaps the “22” should be just “2,” or the 1st should be the 21st? The message and picture side is undated.)

Additional information is greatly appreciated. Do you have any earlier or later usages to report? Please send to: Ed Fraser, 195 Marine Street, Farmingdale NY 11735, or by email to edfraser@gmail.com. ■

**Please Support
Our Advertisers...**
They support our hobby and our journal!

Auction Marketplace

Frank Banke

Engers Frimerker #108, Oslo, Oct. 18-19, 2013.



▲ Lot 428.

The Engers Frimerker Autumn auction catalog contained 2,975 lots, with 1,600 lots Norway, 500 lots Scandinavia and 850 lots foreign countries. The firm also offered a fine range of collections from all the countries. A mint never hinged block of four of the rare 12 øre dull-green unshaded posthorn (NK51, Lot 428), sold for \$12,300. The LONDON 15/5/43 overprint issue mnh, block of 4, Lot 560 sold for \$5,625 and sets were selling for around \$1,300-\$1,400 mint never hinged in good condition. Almost 300 lots were Norwegian postcards. Postcards from Norwegian towns seem to be in high demand at the moment. Lot 1113, with 300 cards with towns and railway markings was conservatively estimated at \$600, but sold for \$6,400. Two similar lots, 1115 and 1116, starting at the same level, went for \$3,400 and \$3,700, respectively.

Bruun Rasmussen, Oct. 22-23, 2013

Bruun Rasmussen's auction offered a total of 989 lots, with 747

lots from Scandinavia and 250 foreign countries. The highest price achieved for a single stamp was for Lot 190, which sold for \$7,100, after starting at \$4,400. The stamp was one of the much-sought-after 1904 provisional 4 ØRE overprints on 8 øre bicolored with inverted frameline. As a side note, in 1987, one of these stamps was found by a Danish stamp dealer when visiting dealers in the United Kingdom. It then paid for him and his girlfriend's four-month trip to Australia. In Australia they also took advantage of the opportunity to get married. Today they are still happily married and expect their first grandchild before Christmas, all because of a stamp. It's amazing what a stamp find can lead to. A postcard lot from the Danish West Indies, Lot 651, with some Christmas seals from 1909 and 1910, started at \$4,400 and sold for \$8,400. A rarely offered accumulation of Icelandic letters and stationery items, stamps, numeral cancellations and foreign postmarks, from the very early issues up to 1980 (stored in two moving-boxes), was offered as Lot 678, which more than doubled the estimate and sold for \$43,200, the highest price also paid in that auction for a lot.



▲ Lot 190.

Online SCC Member Directory
@ www.scc-online.org
A great member service!

Skanfil, Oslo, Oct. 11-12, 2013

The entire auction, with 6,241 lots, included collectibles, coins and stamps, with stamps representing 4,400 lots, or roughly two-thirds the total.

Although the first item featured here is not philately, it's the basis of a fascinating story. The hammering of an Austrian 500-Gulden 1816 bank note, Lot 2710, was one of those events that will remain a fascinating auction result for years and will not be easily forgotten. The bank note was estimated at \$200, but sold for \$155,000. It appears to be unique as it's not in the collection of OENB and KHM Vienna and



▲ Lot 2710, estimated at \$200, hammered for \$155,000.



▲ Lot 5659, with a very scarce steamship postmark, sold for \$5,600.

represents a sensational discovery. It's also a record for an Austrian bank note. A sheet of the Swedish 5 Kr. General Post Office building 1903 (*FACIT* 65), Lot 2487, sold for just below the estimate at \$9,200 (*FACIT* value is SEK 250,000-\$47,000). Some of the stamps were fine, others off centered and with gum creases. A rare steamship postmark and a very fine example "DAMPSK. GANGER ROLF," struck on a cover from 1885, Lot 5659, almost tripled the estimate and sold for \$5,600. Skanfil now has operations

Please make it a personal goal to recruit at least one new SCC member this year. It helps all of us!

in Stockholm and Copenhagen, and at the Copenhagen office there was a live video auction allowing Danish buyers to participate live at the Oslo auction.

Postiljonen, Oct. 10-12, 2013.

Part one of the collection, Danish Essays and Proofs – a lifetime achievement meticulously put together by SCC member, William Benfield – was offered in a first section with 74 lots,

many of them in outstanding condition and considered great rarities of Danish philately. One of the truly fine essays, the first Danish essay ever made, Lot 39, is a Ferslew “FIRE SKILL” essay of 1850. It sold for \$4,100 – surprisingly below estimate. A very fine example of the 2 Rigsbank-Skilling color proof, Lot 43, and one of the few flawless examples known, sold for \$2,600, again below estimate. Some lots with several of the 48 sk. essay in various color proofs, sold for better prices. For example, Lot 62, with 33 essays, doubled the estimate and went for \$6,900. A collection “DANIA” with some 130 lots of 2 RBS, originally assembled by Steen Christensen, author of an excellent book of the 2 Rigsbank-Skilling stamp, was a nice surprise to see on the market again after having been put away for more than 40 years. The highest price was paid for a



▲ Lot 39.

mixed franking of 2 RBS and five 4 Sk. 1854 on cover, sold as Lot 160 for \$21,400, although it must be said that the 2 RBS was cut narrow at right side. Some of the Thiele printing with narrow margins could be bought for as little as \$280. As much as \$2,550 was paid for highest quality of these. For example, Lot 212. A used tête-bêche pair of Finland 5 KOPEK 1856 (*FACIT* IIIv3, Lot 554) sold for the estimate of \$49,300. Another used tête-bêche pair of 10 KOPEK 1856 (*FACIT* 2v5) didn't find a buyer for the estimate of \$98,600. A cover, Lot 609, and with the 32 penni Copenhagen printing (*FACIT* 11), extremely fine and with a Stockholm cancellation,

▲ Lot 86



▲ Lot 554.



sold for \$14,000, against an estimate of \$9,900. A Swedish 3 sk. and two 4 sk. Banco letter, Lot 865, on cover to Finland, sold for \$49,300 with bids beginning at \$41,000. A beautiful and flawless 3 sk. banco (Lot 867) sold for \$11,500 and a copy with a short perforation tooth (Lot 868) sold for \$1,700. Quality is being honored by buyers,



▲ Lot 867.



▲ Lot 868.

although any kind of stamps with faults will also find a buyer. The entire auction consisted of 1,942 lots, of which 1,542 were Scandinavian. ■

Tell 'em you saw it in *The Posthorn!*

First-Day Covers of Norway's NK 200, 202, 205, 212

J.J. Henry

Norgeskatalogen 2013 lists the first-day covers of the four stamps, 200, 202, 205 and 212 at 20,000

NOK under the regular issue series (NK 200, 212 and 205) and states that only three are known. Under the airmail stamp listing (NK 212) the value for the same cover is given as 15,000 NOK and no mention is made of the quantities known.

Several years ago, after I obtained my third one of these covers. I began searching and tracking for evidence of others. In addition to my three covers, I have images of five more covers taken from auction catalogs and, in some cases, the auction results.

All of these eight



covers were sent by registered mail Aug. 19, 1937, from a contact in Oslo addressed to:

*Herrn Frischer,
Wein IX/1.
Althenplatz 6.*

One was addressed (in error?) to Wein XX/1. There were no return addresses on any of the covers.

Each cover has a "MED LUFTPOST/PAR AVION" (B1. nr. 341) label and a numbered four-digit Oslo-Elisenberg Registered Mail label. The numbers on covers that I have identified range from 0832 to 0901 so that, if there were a full series of labels used, it would indicate there could, in theory, be 70 of these covers. If the sender bought a sheet of each denomination and used all of them, there might have been 100 covers mailed to Mr. Frischer.

I have also found a Zeppelin cover shown nearby, sent by Norbert Frischer from the



previously given address to a client in the United States, dated May 13, 1930.

Norbert Frischer has been referred to as a pre-war dealer who apparently had an interest in airmail covers, perhaps explaining the particular interest in a cover containing the airmail stamp, NK 212.

Registry Label Numbers on NK 200,202,205, 212 FDCs		
0832	Skafil Auction	Sold 1/16/2010 for 28000 NOK + Commission
0834	Mine	
0856	Enger Auction	Sold Spring 2003 for 33,000 NOK + Commission
0860	Finn Aune	
0864	Germeten Auction	Sold 11/25/2006 for 49,000 NOK + Commission
	Samlerbørsen	Sold 02/2011 for 15,000 NOK + 20% commission
0890	Mine	
0895	eBay Auction	Sold 6/27/2013 for 2100 USD
0901	Mine	

1000 NOK = 165 USD

A table of the “known” first-day covers in the order of registration label numbers and some of the auction results is shown here nearby.

If you know of any additional examples of these covers, I would appreciate receiving information about them. J. J. Henry, P.O. Box 84, Huntingdon PA 16652, USA. ■

Transfers and Re-Entries

By Alan Warren

Chris King is the new president of the **Royal Philatelic Society London**. He takes over from past president **Brian Trotter**. A recent emailed newsletter from the **American Philatelic Society** refers to the reference collection of Sweden that is stored at its headquarters for use by researchers or those who want to examine genuine vs counterfeit stamps. The link to the collection is http://stamps.org/userfiles/file/Reference_collection/Ref_Sweden.pdf. However, there are some items missing that are needed to complete this collection. Perhaps there are members of SCC who could donate the missing items to the APS reference collection.

Sigge Ringström and his wife left his philatelic collections – and most importantly his collections of Sweden – to a foundation/museum in Trelleborg, the **Ringströms Museum för Filateli**. The materials have been kept in a vault but are now being made available for all of us to see on the museum’s website, www.ringphilmuseum.se. The text is in both Swedish and English. In addition to the Swedish material there is a biography of Sigge with many photos, a list of the foundation’s directors and pages of ship mail, local posts and from his European collections.

Ingolf Kapelrud of Norway received the gilt silver-lion of the Norwegian federation in recognition of his service to the federation as past president, his international achievements as commissioner and judge, and his presidency of the **Federation of European Philatelic Associations** (FEPA).

The **J. H. Richter prizes** for 2011 and 2012 have been announced in Norway. The Richter Fund is named for the late past president of SCC, **Jared H. Richter**, and was established by him to honor achievements in Norwegian philatelic authorship. The prize consists of a diploma and stipend. The 2011 prize goes to **Kjell Åge Johansen**, for his book, *Poststeder i Oslo*. **Erik Lørdahl** received the 2012 Richter Fund prize in recognition of his many years as editor of the *Norwegian War and Field Post Journal* and as author of many monographs on military postal history.

Each year **PostEurop**, the trade association of European public postal operators, holds a competition for the themed Europa stamps. There are two competitions; one conducted online where the public can vote, and one run by a jury of philatelic and stamp professionals. This year the jury vote named Finland as winner for its 1933 Volvo mail truck stamp issued in May. The popular vote selected Turkey’s stamp depicting horse-drawn and motorized mail vehicles, also released in May. ■

From the Stacks

Roger Cichorz

SCC Library Offerings and Needs...

This column will deal with how you can help the SCCL and how the SCCL Committee processes literature and other donations, determines which items to retain and dispositions excess materials. For starters, let me state that the SCC is a not-for-profit 501(c)(3) organization and, as a consequence, the fair market value of your donated philatelic materials (literature, ephemera, stamps, covers and more) may be deductible on your Federal income tax, provided you itemize your return (consult with your professional tax adviser).

Duplicate and superfluous items and items outside the scope of SCCL collections are still of value to the SCCL because revenue from the sale of these items can be used for operating expenses and future acquisitions. Surplus materials are made available to SCC members through the SCCL auctions that are advertised regularly in *The Posthorn*. So, in a nutshell, you can help the SCCL both by donating stuff and by participating in the SCCL auctions and helping make them a success.

A new SCC member recently asked me about how SCCL sells its excess items and the rationale used for the sale. I answered that SCCL sells only through the auctions in *The Posthorn* to give all SCC members an equal opportunity to obtain items of interest. One time some years back, I tried a fixed-price sale on books, but the problem there was that SCCL had only one or two copies of each item available and, in most cases, I received more than two buy requests. Consequently, I had to write or email the individuals and say, "Sorry, the item you wanted has already been sold." This amounted to additional work for me in having to communicate the fact the books were already sold and no longer available, as well as the disappointment experienced by the potential buyers. Auctions seemed to be the fair means to give everyone an equal opportunity to obtain items of interest!

SCCL sells only duplicate and superfluous books (that is, any copies that are obtained after the first two are indexed and shelved). Our policy is to retain two books of each title, so SCCL still has one on hand in case of loss or if one is out on loan. When a donation of literature is received, we promptly process it. In the case of books, we examine the titles to see if they are books SCCL does not have or if SCCL already has them, do we have second copies. If a book received is either a new title or a second copy, it gets indexed and shelved. If it is a third copy, we look at the two SCCL already has, and auction the book that is in the worst condition. Many of our older books are beyond prime condition, so we swap them out for copies received in better condition. This is sometimes moot, as many of our more recent books are still pristine, and that is why some of auction offerings indicate excellent to pristine condition.

I try to use a consistent formula in setting the starting bids of books and current catalogs offered in the SCCL auctions. If a book is in good to pristine condition and in English, I set the starting bid at



'Check Out' the SCC's Library
Go to: **www.scc-online.org**
There's a HUGE amount of information available!

40% of its current or estimated market value (CMV or EMV). If it is in a foreign language, I set the starting bid at 25% of its CMV or EMV. If the foreign-language book has an English summary or is in a tabular arrangement where the language is not an impediment, I up the starting bid to 30 to 35% of its CMV or EMV. I discount the books from these percentages if they are in poorer condition or have noticeable cover markings, damage or other factors that detract. Generally, when there is competition (two or more bids received for lots), they sell for 30 to 50% above their starting bids, but many lots receive only one bid each and sell for their starting bids. Books selling in the SCCL auctions generally do not realize their full market value (dealer sell prices), but occasionally there is a surprise! In the most recent SCCL Auction No. 32 that closed Oct. 1, 2013, a softbound book in German on postal rates, titled *Die Postgebühren Skandinavien (The Scandinavian Postal Charges)*, had an EMV of \$20 and starting bid of \$6. It attracted five bids and sold for a \$27, one increment over two tied second-place \$25 bids (with the high bidder entering a bid greater than \$27)! Did I misestimate the market value, or was there just that much of a demand for this particular book that cost did not become a consideration?

How do I determine CMVs and EMVs? If a book is offered at net price by philatelic literature dealers (Jay Smith, Leonard Hartmann/Philatelic Bibliopole, James E. Lee, Phil Bansner, Vera Trinder, and others), I use the average of their prices as its CMV. There is not much variation among these dealers' sell prices, so the CMVs are accurate. Alternatively, if the book is a publication of a domestic or foreign specialist society and still being sold by its publisher, I go to that Society's website to determine the cost as the CMV. When these literature dealers or societies no longer stock the book titles (generally, older out-of-print editions, foreign language handbooks, sellouts, and the like), I use Internet used-book sellers (Amazon, Abebooks, Albris, and others) as well as auction realizations to determine their market prices (EMVs). In these instances, there is often a wide range of sell prices, so I eliminate outliers on both the low and high sides in determining an average cost, which becomes the EMV. Antiquarian book sellers, who do not regularly deal with philatelic books but occasionally have out-of-print titles on hand, post notoriously high prices that I do not consider in determining EMVs. Frequently, a book selling for \$35 by philatelic literature dealers will be offered by the antiquarian seller for five to 10 times that price!

Periodicals, general and specialized catalogs, auction catalogs and show catalogs are a different situation than books. SCCL space for journals is more limited and there is less demand for loans, so only single copies are shelved. We frequently receive older periodicals that are duplicates in that SCCL already has fairly complete runs of many titles, so these are offered as short-run lots in the SCCL auctions. Current periodicals are also duplicated because we get them directly from the publishers/societies and then additional copies come in soon after from other sources. These are usually individual items rather than significant runs, often random rather than consecutive issues, so they are grouped into "sample" lots of periodicals. Either way, the lots of periodicals are offered at low starting bids (generally 25¢ to 50¢ per journal regardless of their cover or subscription costs). Needless to say, these lots sell well.

Occasionally there are items besides books and periodicals for sale in the SCCL auctions — stamps, stamp year packs, cinderellas, covers, special-issue items and publicity-release photos of stamps by postal administrations. As with books, dealers' sell prices and/or catalog values are used to determine the CMVs of these items. Generally, they are offered at starting bids of 25% to 50% of their CMVs and often sell much higher, but are still relative bargains for the winning bidders. I will discuss auctions and pricing more in future columns, but it is time here for me to switch gears and discuss SCCL needs and my plea for you to donate these items if you have them on hand and no longer require them.

SCCL has some missing-issue gaps in its auction catalog holdings, primarily with Postiljonen and Høiland catalogues. We have reasonable runs of both, but many have been removed from the runs and indexed and placed within the Exhibits and Collections (E&C) holdings because they have "name

collection" offerings that are better referenced and retrievable from the systematized E&C Index listings. In many instances, we have only one E&C-numbered catalog and can use a second (or third) copy. Also, when only one copy exists for E&C, it means that it is probably missing from the catalog run and the third copy can fill that gap. Particularly, with the Postiljonen catalogs, SCCL is missing many of the early issues from its first 50 or so auctions. SCCL fares much better with Høiland, but here again we are missing several of the later auctions (No. 100 and beyond). Many of the Høiland auction catalogs between Nos. 50 and 100 dealt entirely with offerings other than philatelic items (for example, military memorabilia, coins, currency banknotes, vintage wines and more), and SCCL is not interested in any of those sales. If you can donate any of these catalogs but are uncertain if they are specifically what SCCL can use, please contact me with what you have available and I can advise you what to send. My contact information is found at the end of this column.

In my next column, I will list some gaps in our periodical holdings and enter a plea for donations of those items. And, while on the subject of periodicals, I want to end this column by noting that SCCL has a relatively complete stock of all past issues of *The Posthorn* and can provide individual issues to almost complete runs of this periodical to members. It has been a while since we have run an ad, but costs are 25¢ per issue to 2000 and \$1 per issue after that. Some members try to maintain a complete run and if you are missing early issues we can fill the holes in most cases. Please note that *The Posthorn* is the exception, the only literature item SCCL sells outright at fixed price rather than through its auctions.

I encourage your comments about the content of this column, as well as any questions you have about the SCCL and its operations. Also, your suggestions for future column topics are always welcome. Please do not hesitate to contact me via email at rcichorz@comcast.net, USPS mail at Roger Cichorz, 3925 Longwood Ave., Boulder CO 80305-7233, USA, or telephone (303) 494-8361. ■



FRANK BANKE



PHILATELISTS

DANISH WEST INDIES

FAROE ISLANDS

GREENLAND

ICELAND

DENMARK

SLESVIG-HOLSTEN

DANISH EAST INDIA

www.fbanke.com

fbanke@pandora.be

**One of only two letters recorded
with the 50 cents bicoloured stamp**



FRANK BANKE PHILATELISTS
Mezenlaan 3, 3080 Tervuren, Belgium
Phone +32 2 767 5376

The Scandinavian Collectors Club

Founded November 25, 1935

SCC Website: www.scc-online.org

Elected Officers

President: Roger Quinby, 12425 Dancliff Trace, Alpharetta GA 30009-8756; rpquinby@aol.com

Vice President: Mark Lorentzen, 2910 Nielson Way, Unit 603, Santa Monica CA 90405-5368;

pumamarco@me.com

Vice President, Chapters: Randy Tuuri, 29 Cambridge Way, Piedmont CA 94611; tuurifam@comcast.net

Secretary: Alan Warren, PO Box 39, Exton PA 19341-0039; alanwar@att.net

Treasurer: Kauko Aro, 325 Riverwood Rd., Mooresville NC 28117; kiaro@roadrunner.com

Immediate Past President: Mats Roing, 89 Summit Way, Apt 2, Gardiner MT 59030-9314;

mr22841@gmail.com

Directors: Steve Lund, PO Box 16213, St. Paul MN 55116; steve88h@aol.com

Roger Cichorz, 3925 Longwood Ave, Boulder CO 80305-7233; rcichorz@comcast.net

John Salmi, jsalmi5@shaw.ca

Jerry F. Eggleston, PO Box 829, Breckenridge CO 80424; jerryeggleston@comcast.net

Geoffrey Noer, 1029 Vista Del Mar, San Jose CA 95132; noer@noer.com

John Stanley, 953 Green Pond Rd., Rockaway NJ 07866-4408; tjwalsh24@aim.com

Appointed Officers

Executive Secretary: Steve Lund, PO Box 16213, St. Paul MN 55116; steve88h@aol.com

Library Committee: Paul Albright, Howard Benson, Roger Cichorz, Greg Frantz, Jim Kilbane,

Jeff Modesitt. Contact: SCC Library, c/o RMPL, 2038 Pontiac Way, Denver CO 80224;

palbright@wiche.edu

Membership Chairman: George A. Kuhhorn, PO Box 4486, Emerald Isle NC 28594;

geokuhh@starfishnet.com

Exhibition Coordinator: Mark Lorentzen, 2910 Nielson Way, Unit 603, Santa Monica CA 90405-5368;

pumamarco@roadrunner.com

Stamp Mart Manager: Viggo Warmboe, 2740 Foxgate Dr., Minnetonka MN 55305

viggo62@comcast.net

Canadian Mart Manager: Roger Fontaine, 9 Rochester Ave., Winnipeg, MB, R3T 3V6, Canada;

stampman9@gmail.com

APS Representative: Steve Lund, PO Box 16213, St. Paul MN 55116; steve88h@aol.com

Literature Promotion: Alan Warren, PO Box 39, Exton PA 19341-0039; alanwar@att.net

Publicity Chairman: Vacant

Website Coordinator: Eric Roberts, Box 720786, Pinon Hills CA 92372-0786; sccwebman@gmail.com

Historian: Roberta Palen, PO Box 364, Forbes MN 55738; toivossa@hotmail.com

Awards Chairman: Mark Lorentzen, 2910 Nielson Way, Unit 603, Santa Monica CA 90405-5368

SCC Study Groups

DWI: Arnold Sorensen, 7666 Edgedale Drive, Newburgh IN 47630-3062; valbydwi@hotmail.com

Sweden Ring: George A. Kuhhorn, PO Box 4486, Emerald Isle NC 28594; geokuhh@starfishnet.com

Finnish Study Group: Roger Quinby, 12425 Dancliff Trace, Alpharetta GA 30009-8756; rpquinby@aol.com

Danish Wavy Line: Donald B. Brent, PO Box 13196, El Cajon CA 92022; dbrent47@sprynet.com

Scandinavian Revenues: Paul Nelson, Tucson, Ariz.; pnels1@comcast.net

FACIT 2014 Special

FACIT 2014 Special, Leif Jaråker, ed. 1008 pages, 6 ½ by 9 ½ inches, card covers, perfect bound, Facit Förlags AB, Västerås, Sweden, 2013, ISBN 91-86564-72-2.

This continues to be *the* catalog for collectors of Sweden, as well as the other Nordic countries. In addition to those areas mentioned on the cover—Sweden, Denmark, Faroes, Danish West Indies, Iceland, Greenland, Norway, Finland and Åland—the Finnish related areas of Aunus, Karelia and North Ingermanland are also included. The continuing expansion of the catalog is reflected in the increased number of pages—944 pages in 2011 and now 1,008 pages.

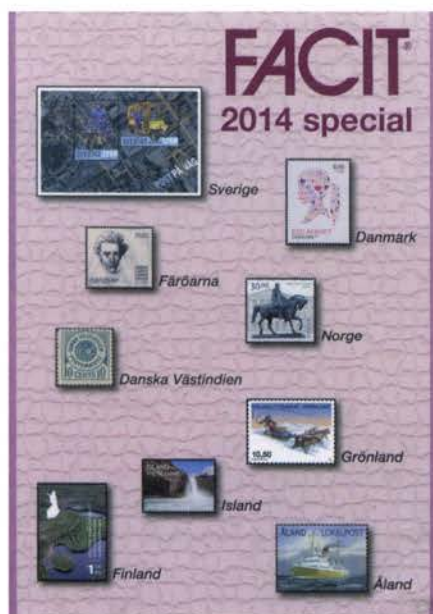
Sweden receives special treatment at the beginning of the catalog with all-inclusive subjects such as proofs, rarity of early covers by destination, vending machine labels, booklets, officials, postage due, military envelopes with reply stamps and first-day covers. The last item now includes two pages of illustrated pictorial first-day and event cancels.

Other specialty areas for Sweden appear only every few years in *Facit*. The table of contents points to those previous annual catalogs for listings of Swedish revenues, postal stationery, locals, reply stamps and Christmas seals since they are not in this 2014 edition.

The other Nordic countries are similarly treated with FDCs, franking labels and stamp booklets included with the stamp issues. After meeting Editor Leif Jaråker at Nordia 2013 in Iceland, I sent him proof that their date of issue for one of Denmark's stamps (No. 277) had long been in error by one day. The correct date now appears in this edition. New to this issue is an article by Orla Nielsen in the Iceland section, where he lists the largest-known multiples, mint and used, of the oval aur issues of 1876-1901.

All stamp illustrations are in color except for certain varieties. As mentioned, the *Facit* catalog continues to be *the* essential reference for collectors of the Nordic countries and proves that well.

Note: On Page 4 in this issue of *The Posthorn* there is a special offer for SCC members in the United States and Canada who renew their membership for three years. The offer includes a complimentary copy of this new FACIT 2014 Special.



— Alan Warren

**Please Make it a Point
to Support Our Advertisers**
They support our hobby and our journal!

Norgeskatalogen 2014

Norgeskatalogen 2014 (Catalogue of the Postage Stamps of Norway), Oslo Filatelistklubb. 480 pages, 6 ½ by 9 ½ inches, perfect bound, card covers, Oslo Philatelic Club, Oslo, Norway, 2013. ISBN 978-82-997618-8-8, 375 NK (approximately \$65 in Norway).

This 66th edition of Norway's premier reference work for collectors continues to set a high bar for outstanding single country catalogs. The introductory material discusses the various types of Norway cancellations and also the areas of caution where forgeries are known. Although the listings are in Norwegian, the colors and varieties are easily discernible and understood by those whose first language is not Norwegian. Where there are extended discussions of printing and paper types, these appear in both Norwegian and English.

The listings go well beyond the traditional postage stamps, coil stamps, officials and postage dues to include vending machine booklets, franking labels, personalized stamps, returned letter stamps and special products such as souvenir sheets sold by the Norwegian postal service. The famous Posthorn series again has a section of its own that goes into the cataloging and terminology associated with these stamps. Postal rate tables are brought up to 2013. Prestamp cancellations (1845-55) are illustrated.

Keeping with this catalog's tradition, two special articles were prepared for this edition. Peer-Christian Ånensen, chairman of the catalog committee, writes about the design and production of the King Haakon VII set of four values issued in 1946. He shows archival material and lists plate flaws.

The other article describes the Swiss type cancels (bridge cancels) developed in Norway 1930-36. A table lists these cancels by town name with indication of period of use and a rarity grade. The catalog also has a selected bibliography covering a wide range of topics of interest to Norway collectors.

— Alan Warren

Kingdom of Denmark: 1851 Rigsbankskilling and 1854-69 Skilling Adhesives through the Post and Abuses

Kingdom of Denmark: 1851 Rigsbankskilling and 1854-69 Skilling Adhesives through the Post and Abuses, by Gavin Fryer. 8 ½ by 11 inches, 48 one-sided pages, card covers, perfect bound, self-published by the author, Addlestone, Surrey, United Kingdom, 2012. For availability, contact the author at gavinfryer@btinternet.com.

The author specializes in Madagascar and matter for the blind. However, he showed this classic Danish material at the NORDIA 2012 exhibition in Roskilde, Denmark. For references he shows a copy of the March 1851 Postal Act of Denmark and mentions various pertinent postal circulars released over the next two decades.

The first group of covers includes local letters, footpost, weight markings and rural deliveries with associated fees. Two examples of ladies' decorated envelopes are seen. Several printed matter rates are



Kingdom of Denmark

1851 Rigsbankskillings
and
1854-69 Skilling adhesives

through the post and abuses

Gavin Fryer RDP FRPSL

shown for domestic use as well as to Sweden and Norway. A rare 19th century piece is an envelope used as a parcel card in connection with an institution for the blind.

The 2-skilling local carrier rate within Copenhagen was extended in 1861 to other large towns, and several examples are shown. Other unusual examples of mail include a domestic money-order letter, an advertised letter and mail to Holstein and Lübeck.

The installation of letter boxes outside post offices resulted in many incorrectly paid letters, several examples of which are shown by Fryer. Another type of mail includes items originating in or passing through Sweden.

Abuses illustrated include several re-uses of cancelled stamps, fraud involving cash prepayment whereby the clerk kept 2 skilling for himself but marked the cover otherwise, and a number of improper endorsements. The exhibit is a feast for the eyes of mail from Denmark's classic period that shows unusual uses, several types of interesting postal

markings, misunderstanding of postal rates and regulations and examples of obvious fraud.

— Alan Warren

Member Advertisements

Wanted: Swedish local posts 1888 - 1947: stamps, postal stationery, and commercial covers – no first-day covers. Contact Larry Ballantyne, P.O. Box 6634, Katy TX 77491-6634, email LBallantyne@att.net.



Wanted: Need advertising manager for *The Posthorn*. Position reports to president and is responsible for soliciting and maintaining advertising relationships (print and online) with the SCC. Please respond either to President Roger Quinby (rpquinby@aol.com) or Editor Wayne Youngblood (wystamps@gmail.com).



Wanted: Looking for information or any covers related to the 1940-41 Richardson Pan-American Highway Expedition. Contact Wayne Youngblood, 4615 Lindell Blvd Apt. 1102, Saint Louis MO 63108 (wystamps@gmail.com).



Wanted: Abbott "Dear Doctor" Sodium Pentothal ad postcards: Iceland Erupting Geysers, Norway Fiords, and Sweden Klara Sjö och Stadshuset. Also, any Abbott cards with Swedish text mailed to doctors in Sweden and "Dear Nurse Anesthetist" (or without "Dear Doctor" salutation) variants, foreign-language texts, and others from 1964-68. Top dollar offered! Preparing illustrated catalog and need scans and/or color photocopies of rare cards as well. Contact Roger Cichorz, 3925 Longwood Ave., Boulder CO 80305-7233, email: rcichorz@comcast.net.



Wanted: Looking for Finnish 1930 series covers, especially singles on covers to abroad. Please write to (email): mikael.collan@gmail.com. ■

Scandinavian Area Awards

Awards from several recent shows at home and abroad

The Court of Honor exhibit at **Minnesota Stamp Expo** in Minneapolis in July was **Ross Olson**'s *Sweden: The Medallion Series 1910-1919*. In the open competition, **Mike Schumacher** received a vermeil and an Ephemera Society of America award for his *The Icelandic Saga of the 1972 Match of the Century*. Mike also won a silver for his *Silver Anniversary of the Reign of King Christian (1912-1937): Iceland Stamps and Block Issue*.

At **StampShow** in Milwaukee, Wis., in August, **Ross Olson**'s Sweden exhibit received a prix d'honneur in the Champion of Champions competition. In the open competition, **Seija-Riitta Laakso** won a gold and the Best Picture Postcard exhibit with her *Paris by Night*. She also presented a seminar on collecting and exhibiting picture postcards during the show.

Michael Schumacher won a vermeil and an AAPE award of honor for *The Icelandic Saga of the 1972 Match of the Century – Bobby Fischer vs Boris Spassky*. Another vermeil went to **Arnold Sorensen** for *Danish West Indies Printed Matter 1849-1917*. In the literature section, the **Rocky Mountain Philatelic Library** took a silver for **Peter Bergh**'s book, *Danish Øre BiColor Issues: A Primer*.

Several Nordic exhibits won honors at the **Thailand 2013** exhibition in Bangkok in August, too numerous to list here. We can report that large gold medals were awarded to **Douglas Storeckenfeldt** for *Iceland until 1901*, to **Jørgen Jørgensen** for *Danish Mail to Foreign Destinations 1854-1874*, and to **Richard Bodin** for *Swedish Militaries & Volunteers in War, Campaigns, or in Active Service Abroad 1582-1905*.

Gregory Frantz received a vermeil at **Balpex**, held in Hunt Valley, Md., over the Labor Day weekend, for his *Spitzbergen: Postal History of the North Pole 1896-1914*. At the **Upper Hutt** show in New Zealand in September, **David Loe** received a vermeil for *Icelandic Postal Rates 1870-1970*.

Arnold Sorensen won a vermeil at **Indypex** in Indianapolis, Ind., in September for his *Postal Uses of the Danish West Indies Coat of Arms Stamps*. ■

– Alan Warren

SCC and Scandinavian Show Calendar

2014

Sescal (SCC National Meeting), Oct. 17-19, Los Angeles, Cal.

Nordia 2014, Nov. 21-23, Norges Varemesse, Lillestrøm, Norway

2015

Philadelphia National Stamp Exhibition (SCC National Meeting), April, Oaks, Pa.

Nordia 2015, Oct. 30 – Nov. 1, Täby, Sweden

2016

New York 2016, World Stamp Show, May 28-June 5, New York City, N.Y.

Nordia 2016

Chicagopex (SCC National Meeting), Nov. 18-20, Itasca, Ill.

2017

Westpex (SCC National Meeting), San Francisco, Cal.

Nordia 2017

Albums Closed

Jeremiah Arthur Farrington, Jr.

Former SCC member and Danish West Indies collector Jere Farrington died Aug. 24, 2013, in North Carolina at the age of 93. He was co-editor with Roger Schnell of the second edition of Volume 1 of *Danish West Indies Mails 1754-1917, Postal History*, by John L. DuBois. He authored several articles on DWI that appeared in *The Posthorn* on the bicolor issue and postage dues. He also collected Sweden and Denmark.

Jere's other passion was the United States postmaster's provisional issues of New York. He was co-editor of Stanley M. Piller's *The New York Postmaster's Provisional* (1991) and also authored an article on the subject in the *Opinions VI* series published by the Philatelic Foundation. Jere's eight-frame exhibit, *New York Postmaster's Provisional 1845*, is in the American Philatelic Research Library and copies are also for sale by the U.S. Philatelic Classics Society.

He was an accredited APS judge, and an expert on British North America, British Colonies and United States. Jere served on the promotion/publicity committee for the Nordia 2001 exhibition in Tucson, Ariz. In addition to philately he collected coins, ancient Chinese ceramics, gemstones and American antiques.

With a degree in chemical engineering, he worked for several industrial chemical firms before joining Princeton University in 1952 where he held several positions, including assistant dean of engineering and assistant to the President during a 35-year career. He later moved to North Carolina where he served on the board of adjustment of the Laurel Park Town Council for more than 18 years.

Jere's wife, Joanne, predeceased him by just eight months. He is survived by his daughter Pam and sons Steven and Jay (Jeremiah III). ■

— Alan Warren



SCC Chapter Meetings & Contacts

1. SEATTLE/NW: 2nd Monday, 9 a.m. at members' homes. CONTACT: Dana S. Nielsen, 13110 NE 177th Place, PMB #263, Woodinville WA 98072-5740. email: dananielsen@comcast.net.
 4. CHICAGO: 4th Thursday of January-June and September, October; 1st Thursday of December, Des Plaines Public Library, 1501 Ellinwood St., Des Plaines IL 60016. CONTACT: Ron Collin, PO Box 63, River Grove IL 60171-0063; (773) 907-8633, phone: (312) 259-1094, email: collinr@ameritech.net.
 7. NEW YORK: second Wednesday of February, April, June, September and November at The Collectors Club, 26 E 35th St, NYC. CONTACT: Carl Probst, 71 Willoughby Ave, Hicksville NY 11801, email: cwp1941@aol.com.
 9. NORTH NEW JERSEY: 3rd Wednesday at members' homes. CONTACT: Warren J. Grosjean, 32 Juniper Rd., Wayne NJ 07470-6156, email: warren@Derma-Safe.com.
 13. DELAWARE: Last Tuesday at members' homes. CONTACT: Alan Warren, email: alanwar@att.net.
 14. TWIN CITIES: 2nd Thursday (except July and August), 7 p.m. at Danish American Center, 3030 W River Parkway S, Minneapolis MN 55406. CONTACT: Steve Lund, 383 Grand Ave Apt. 5, St. Paul MN 55102; (651) 224-3122; email: steve88h@aol.com.
 17. SOUTHERN CALIFORNIA: 1st Wednesday at members' homes. CONTACT: Jerry Winerman (818) 784-7277, or email: gerjerry@sbcglobal.net.
 21. GOLDEN GATE: 1st Saturday, 11 a.m., at members' homes and at various shows (WESTPEX, PENPEX, etc.). CONTACT: Herb Volin, (510) 522-3242, email: HRVolin@aol.com.
 24. MANITOBA: 2nd & 4th Wednesdays September through May at Scandinavian Cultural Centre, 764 Erin St., Winnipeg, MB. CONTACT: Robert Zacharias, 808 Polson Ave., Winnipeg, MB R2X 1M5, Canada, email: robertzacharias@shaw.ca, Website: <http://members.shaw.ca/scmanitoba>
 27. COLORADO: 1st Saturday September-June, 10 a.m., at the Rocky Mountain Philatelic Library, 2038 S. Pontiac Way, Denver CO 80224. CONTACT: Roger Cichorz, 3925 Longwood Ave., Boulder, CO 80305-7233, email: rcichorz@comcast.net.
- NEW ZEALAND COORDINATOR: John Campbell, email: johncampbellnz@hotmail.com.

Chapter Reports

Randy Tuuri, Vice President, Chapters



Golden Gate – Chapter 21

Meetings continue at member's homes and shows. All recent meetings have reviewed mart books, had great lunches and discussion on recent purchases.

North New Jersey – Chapter 9

In September the chapter met at the home of a member who has not been able to attend other meetings with a good time had by all. The October meeting was quite normal early in the month followed by a special meeting at the American Stamp Dealers Association show in New York.

Twin Cities – Chapter 14

Six members attended The APS StampShow in Milwaukee and staffed the SCC society table. Garrett Sainio made a presentation, *Selling Stamps on E-bay*, at the September meeting. Eighteen members attended to October presentation on *Using Word to Make Album Pages*.

Seattle – Chapter 1

In July the chapter met to peruse circuit books after which they enjoyed Danish hot dogs and a salad for lunch. In August they studied Greenland, and Iceland was studied in October.

Chicago – Chapter 4

At the first meeting after the summer break, in September, circuit books from the SCC and APS were reviewed. A show and tell by the members was also held and items which puzzles someone were presented for the members to help explain.

Colorado – Chapter 27

The September meeting included a show and tell and a presentation on the *Danish Oval Issues* by Eric Carlson. October's meeting reviewed mart books and had a presentation on *Swedish Stamps Issues*.

Manitoba – Chapter 24

Following hosting the SCC annual meeting in August, the chapter was off for most of the summer with some members active at local shows. Meetings started again in October with the annual meeting followed by a show and tell.

Delaware – Chapter 13

The October meeting started the fall off with many different show and tell items and was held at a local restaurant. ■

Online SCC Member Directory

@ www.scc-online.org

A great member service!

Scandinavian Literature Notes

By Alan Warren



News from Denmark



Ib Krarup Rasmussen discusses the countless waterfalls of Iceland as depicted on that country's stamps in the August *Dansk Filatelistisk Tidsskrift*.

In the same issue Peter Michaelsen shows a postcard with Denmark's first scout camp postmark from Fænø in 1930.

Ib Krarup also describes the relocation of the Danish Federation's library to the Løvstræde address and mentions the holdings of books, journals, postal service communications and other resource materials in the collection. Ole Maintz reviews the small letter collection offices in 19th-century Denmark in the September *Posthistorisk Tidsskrift*, and the mail that went to, from and between them.

In the same issue Oskar Sørensen describes postal conditions between Denmark and Germany during World War II. Steen Jack Petersen shows a 1940 Faroes cover with the typewritten endorsement "Radio Hilsner."

News from Germany



Rolf Dörnbach continues his profiling of the individual Faroese islands in the August *Philatelistische Nachrichten*, this time with a study of Sandoy. Roland Daebel reviews the end of the use of Iceland's oval issues and the beginning of the use of the Christian IX and Í GILDI overprints in 1902. He describes last day of oval use and first day of the new issues. In the same issue Matthias Hapke summarizes the celebration of Children's Day (Barnens Dag) in Sweden with special cancellations and cachets.

News from Great Britain



Birthe King describes the Open Philately class in FIP exhibitions in the August issue of *Stamp Lover*. After an experimental period this class, which is similar to what we call Display in the United States, was formally recognized and adopted by FIP at the recent show in Melbourne, Australia. Birthe discusses the evolution on her own Open Philately exhibit, *Denmark: Conscience, Conflict, and Camps 1932-1949*. The open class incorporates non-philatelic material as long as the philatelic items amount to 50% or more of the exhibited items. Her exhibit achieved 95 points at Melbourne, which would be equivalent to a large gold.

Christer Brunström describes the so-called tourist stamps of Spitsbergen – Cinderella labels that visitors to the area used on postcards sent home – in the August issue of *Gibbons Stamp Monthly*. He illustrates examples of those "stamps" produced by Vesteraalens Steamship Company, tour leader Capt. Wilhelm Bade, Norddeutscher Lloyd shipping line, the Hamburg-Amerika Line and labels created by Germany in 1909 and 1911.

The September *Scandinavian Contact* is the first issue under the new editorship of Gwynne Harries. In his long-running series on faraway places Doug Nottingham shows a cover sent from Odense, Denmark, to Shanghai in 1932. Similarly, Brian Flack continues his series on Iceland mail to unusual destinations with examples sent to Russia, the Saarland French Protectorate and to Senegal.

News from the Netherlands



In the September *Het Noorderlicht*, Henk Fiolet discusses the so-called Ruhtinansalmi bisect of 1918, in which the Finland 40p eagle type of 1911 was cut vertically in half (see note under Lape 65A). In the same issue Ton Steenbakkers illustrates Viking artifacts as seen on the stamps of

Sweden, Iceland, Finland, Norway, Denmark and Greenland. Johan Vroom discusses postal markings of the Danish post office in Lübeck.

News from Norway



Svein H. Andersen begins a new series on censorship in Denmark 1940-47 in the September issue of the *Norwegian War and Field Post Journal*. He illustrates the various censor and pass marks of Copenhagen and Sønderborg and lists dimensions, color, date range of use and an indication of rarity. Knut Arveng writes about the Norwegian ski troops in Scotland, as depicted on NK 337 in the London series.

Geir Sør-Reime continues his series on Norwegian revenues in issue 5/2013 of *Norsk Filatelistisk Tidsskrift*. He describes the arms type issues where the word "stempelmærke" is replaced with "stempelmerke." Peer-Christian Ånensen continues his series on the photogravure posthorn issues of Norway with a focus on the 12-øre violet.

Carl-Erik Skrolsvik discusses the right- and left-turning posthorns in the Norwegian crown Posthorn FDC and special cancellations in the issue 6/2013 of *Norsk Filatelistisk Tidsskrift*. They can be either way, although the well-known crown Posthorn in oval stamps have the horn's bell on the right. Geir Sør-Reime continues his revenue series with the coat of arms series of 1937. Peer-Christian Ånensen delves into plating of the 10-øre Posthorn issue NK 388.

News from Sweden



The first issue of *Nytt från Svenska FDC Sällskapet (News from the Swedish FDC Society)* appeared in July. It discusses the 1955 catalog of Sweden first-day covers compiled by Sigurd Tullberg. FDCs illustrated in this issue of the journal include the Battle of Lützen set of 1932 and the Gustav II Adolf profile issue of 1920. One column lists prices realized of older Sweden FDCs from sales and auctions during the first six months of 2013.

In issue 5/2013 of *Svensk Filatelistisk Tidsskrift*, Gunnar Dahlstrand continues his series on modern counterfeits of Swedish stamps. One clue is that the fine print on these stamps appears of poor quality when examined under magnification. In the same issue, Peter Nordin begins a column on collecting registry labels (reketiketter).

News from the USA



Paul Nelson discusses Norway's tobacco tax stamps and packaging in response to the embargo on tobacco products resulting from the Nazi invasion in World War II in the fourth quarter 2013 issue of *The American Revenuer*. Norway was forced to come up with homegrown tobacco and blends that stretched the product. The government taxed cigarettes, cigars, pipe tobacco and even cigarette papers. ■

Need Help? Try SCC's Helper's Service

SCC is one of the few collector societies to provide a standing group of expert volunteers who are capable of answering most any question you may have on Scandinavian material. The SCC's Helper's List now has the final translator that was needed (Norwegian) thanks to a friend, Vincent Abate, who was kind enough to volunteer.

The idea of having an information center was born several years ago. Contacts were made with known specialists from within the club. Not one person refused to join in.

The system works as follows: contact me via email (geokuhh@starfishnet.com) or at PO Box 4486, Emerald Isle NC 28594, with your question. I will contact the appropriate specialist with your request. So far this system has worked well for everyone. There is so much knowledge available, so feel free to ask. The price is right too – it is included in your dues. So, get your money's worth! – *George Kuhhorn, Helper/Trader list coordinator*

*Welcome to the largest
auction house in Sweden for
philately and numismatics!*



6 PUBLIC AUCTIONS EVERY YEAR,
WITH 2,500-4,500 LOTS IN EACH ONE.

All auctions are professionally presented in catalogues and on our homepage – www.philea.se – the most visited philatelic site in Northern Europe.

Our emphasis is on Scandinavia, but we also offer material from all over the world.

The following auction companies are now part of the Philea-group.

- Lars Tore Eriksson Frimärksauktioner
- Frimärkskompaniet AB
- Kihlströms Frimärkshandel AB
- Göteborgs Frimärkslager
- NOVA

**Contact
Us!**

AB PHILEA • Svartensgatan 6 • SE-116 20 Stockholm • Sweden
Phone: +46 8 640 0978 • Fax: +46 8 643 22 38 • E-mail: mail@philea.se

Summer of 2013 was a fine summer of shows. In June, Chapter 24 was a great host to the SCC at Royal*2013*Royale in Winnipeg. Minnesota Stamp Expo, which will host the SCC in 2018, was held here at Crystal in July and the APS StampShow highlighted the summer in Milwaukee, Aug. 8-11. Over the course of these months I enjoyed meeting new and veteran members and discussing Scandinavian philately.

I would especially like to thank my colleagues from Chapter 14 who traveled to Milwaukee and staffed the SCC society table. Pictured below (from left) are: Steve



Opheim, Garrett Sainio, Ross Olson, me, Viggo Warmboe and Mike Schumacher.



SCC is now well into our membership drive. The *FACIT Specialcatalog* offer to date has resulted in 22 new three-year memberships and 34 three-year renewals. By the time you read this, ads will also have appeared in *Linn's*, and the *American Philatelist*. If you have not taken advantage of the offer you will be receiving a renewal letter via email or snail mail reminding you to renew your membership.

I hope to see you at Chicagopex. Med venlig hilsen! ■

Membership Statistics for the Third Quarter, 2013

New Members

- 4210 Agatstein, Zachary, 28 Elmcrest Ave, Providence RI 02908
- 4211 Hicks, Edgar, PO Box 45029, Omaha NE 68145
- 4212 Hohertz, Robert, 1700 Independence Drive, Northfield MN 55057
- 4213 Netterstrom, Gerald, 347 Sanctuary Court, Hainesville IL 60030
- 4214 Talso, Marvin, PO Box 350, Redwood Valley CA 95470
- 4215 Thureson, Erik, 152 Roosevelt Ave, Sault Ste. Marie, Ontario, Canada P6C 5M8
- 4216 Kahn, Serge, 85 allée de la Vully, F-74290 Menthon Saint Bernard, France
- 4217 Fox, Vem, 261 – 111th Lane NW, Coon Rapids MN 55448
- 4218 Hoff, George R, Jr., 291 Winsor Lane, St Paul MN 55112
- 4219 Hempel, Paul, Jr., 401 – 22nd Ave NE #3, Minneapolis MN 55418
- 4220 Lemke, Daniel, PO Box 472, Northfield MN 55057-0472
- 4221 Aamaes, Gustav H., 5 Diamante, Irvine CA 92620
- 4222 Corbridge, James N. Jr., 1635 Dilar Drive, Grove OK 74344
- 4223 Grassman, Charles Lee, 345 Tuckahoe Drive, St. Louis MO 63125-4142
- 4224 Leissner, Edgar L, 711 Canterbury Hill, San Antonio TX 78209
- 4225 Peterson, Gary, 2940 West River Parkway South, Minneapolis MN 55406-1842
- 4226 Olsen, Richard, 97 – 7th Ave S, Apt B3, Wahpeton ND 58075
- 4227 Reiter, Gary, 5316 Birchcrest Drive, Edina MN 55436
- 4228 Rosenblum, Larry, 1030 E. El Camino Real, PMB 107, Sunnyvale CA 94087
- 4229 Twenge, Stephen P., 10621 Wincheck Road, San Diego CA 92131

Change of Address

- 758GL Alden, John D, Beverwyck, 40 Autumn Dr., Apt 169, Slingerlands NY 12159
- 1764 Brandal, Ole L, 32312 – 109th Place SE, Auburn WA 98098
- 1228 Egy, Harold A, PO Box 2347, Sun City AZ 85372-2347
- 3294 Svensson, Ernest D., 1815 Maxfield Drive, Columbus OH 43212-1805

Recent Donations to SCC or the Library (cash or library materials)

- 3598 Paul Albright
- 1338 Kauko Aro
- 2888 Roger Quinby
- 1808 Ellis Glatt
- L531963 Eric Roberts
- 938GL Arnold Sorensen
- 1087 Alan Warren
- L103 Mike Schumacher

Resigned in good standing

- 4007 Kocman, Jiri

Deceased

- 1254 Hamerschlag, Bob
- 3980 Bryne, Roger

S.C.C. Library Auction #33

(Closing Date Jan. 15, 2014)

This is the 33rd auction of items being offered to SCC members. These 52 lots are excess to current SCC Library holdings. Auction realizations will be used to purchase future literature acquisitions for the SCC Library. Place bids with Roger Cichorz, 3925 Longwood Ave., Boulder CO 80305-7233, USA; telephone (303) 494-8361, or email: rcichorz@comcast.net. This auction closes Jan. 15, 2014.

Terms of Sale:

1. The minimum bid accepted for a lot is the starting bid. Wherever possible, the auctioneer's estimated market value (EMV) or actual current market value from dealers' pricelists (CMV) is included in the lot description as a guideline for bidders.
2. The highest (successful) bid will be placed at one bidding increment over the second-place bid. Bidding increments are: \$0.50-\$5 = \$0.50, \$5-\$25 = \$1, \$25-\$50 = \$2, \$50-\$100 = \$3. Note: For this auction only, the bidding increments for lot B25 starting at \$850 will be \$25. Bids are in U.S. currency. In instances of tied high bids, the lot sells to the earliest bidder.
3. Mail, telephone or email bids are acceptable. Please include your name, address and telephone number. Email bids will be confirmed by email reply. Telephone bids will be recorded and confirmed at the time they are placed. Bidders should provide their SCC membership number to confirm eligibility to participate.
4. Successful bidders will be informed of their winning bids shortly after the close of the auction. Invoices will be included with the dispatched auction lots. Postage (and insurance, if applicable) will be added to the price of the successful bid(s). Payment can be made in U.S. funds by check (to the "SCC Library"), USPS postal money order, bank draft, or in currency (at sender's risk, auctioneer suggests certified or insured mail). Sorry, credit-card payments are not accepted, although payments via PayPal can be arranged (inquire with the auctioneer).
5. Lots may be returned for a refund if grossly misdescribed. Lots consisting of multiple non-book items are only approximately described, so slight inaccuracies in the item counts and description of the lots are not cause for return. Books, catalogs and periodicals are generally used library copies in serviceable condition, unless otherwise noted in the lot descriptions.
6. Prices realized for lots are published in *The Posthorn*. Unsold lots are noted at the end of the prices realized list, and are available on a first-come, first-served basis at their starting bids.

Lot Numbers and Descriptions:

1. **Denmark:** *Det Kjøbenhavnske Postvæsen, 1624-1912 / The Copenhagen Post Office, 1624-1912*, in Danish, by Fr. Olsen, Danish Post, Copenhagen, 1912, vii + 174 pages, photocopied loose-leaf pages. A classic work on the history and development of the Copenhagen Post Office. The authoritative contemporary reference on the subject for someone fluent in Danish. EMV = \$18, Starting Bid = \$2.
2. **Denmark:** *Dänische Postgeschichte, 1851-1905 / Danish Postal History, 1851-1905*, in German, by Wilhelm Lambrecht, FG Nordische Staaten E.V., Winsen/Luhe, Germany, 2005, 87 pages, profusely illustrated, paperback, pristine. Contains illustrations of 146 covers (within Denmark and to foreign destinations) and presents detailed explanations of their postal routes, rates, and markings. CMV = \$17.50, Starting Bid = \$4.50.
3. **Denmark:** *Service Stamps of Denmark, 1871-1923*, (Danmarks Tjenestemærker), bilingual text in English and Danish, by Henry Regeling, Kjøbenhavns Philatelistklub, Copenhagen, 1999, 186 pages, profusely illustrated, ISBN 87-983015-4-3, hardbound, pristine. Comprehensive specialized study of Danish official stamps that covers all aspects of their design and production, presents details on every printing and all cliché types and illustrates and plates all varieties. CMV = \$69, Starting Bid = \$28.
4. **Denmark:** Two catalogs (*HAFNIA 76 Katalog 3* and *HAFNIA 87 Bulletin 1*) for Copenhagen's International Stamp Exhibitions, in Danish and English, 304 and 50 pages, respectively, profusely illustrated in color, softbound, pristine. Contents include detailed articles in English on the three Hafnia 76 miniature sheets, Court-of-Honour Exhibit items, Otto Boche's painting used for one of the Hafnia 76 miniature sheets, retouches of clichés of Denmark's first stamp issues, Denmark's rare inverted frames, history of the Copenhagen Philatelic Club (1887-1986), Hafnia 87 miniature sheet, suburban letters from Copenhagen (1806-60) and Danish postman and the press, and letters, newspapers and news. EMV = \$8, Starting Bid = \$3.
5. **Faroese:** *Stamps and Story of the Faroe Islands*, in English, by Don Brandt, author-published, Reykjavik, Iceland, 1996, 176 pages, profusely illustrated, ISBN 9979-9194-4-2, softbound, pristine. Delightful and informative stories on Faroese stamps and postal history, woven in with the life and history of the Faroes. CMV = \$34, Starting Bid = \$14.

6. **Greenland/Scandinavia:** *Scandinavia, Including the Valuable Collection of Greenland Formed by Earl G. Jacobsen*, Robson Lowe Ltd. auction catalog for Dec. 3, 1975, Sales No. 4018-19, with list of prices realized, 64 pages (21 pages of black & white plates), paperback. Sale consisted of 721 lots (105 lots of Jacobsen's Greenland, also Denmark, DWI, Iceland, Norway and Sweden). CMV = \$10, Starting Bid = \$2.
7. **Iceland:** *Catalogue of the Specialised Collection of Iceland Formed by an Eminent Continental Philatelist*, Harmer Rooke & Co. Ltd. auction catalog for April 9, 1965, with list of prices realized, vi + 34 pages (7 pages of color plates + 20 pages of black & white plates), paperback. Sale consisted of 424 lots of Iceland stamps and postal history. EMV = \$10, Starting Bid = \$2.
8. **Finland/CD:** *Postal Censorship in Finland, 1914-1918*, in English, compiled and edited by Roger P. Quinby, New 2012 Edition in CD format, iii + 352 pages + 8 appendices, profusely illustrated in color. Superlative reference manual contains complete listings and comments on usage of all known censor stamps and resealing tapes, the purpose of which is to provide all essential information and references to begin a serious specialized collection of postal censoring in Finland during WWI. CMV = \$35, Starting Bid = \$14.
9. **Finland/Postal History/Postal Stationery:** Two catalogs (*Bulletins 1 and 2*) for Helsinki's Finlandia 95 World Exhibition for Postal History and Postal Stationery, in Swedish, Finnish and English, 72 and 80 pages, respectively, profusely illustrated in color, softbound, excellent condition. Contents include informative articles in English about an overview of Finnish postal stationery, Finnish postal history from 1891-1918 and Finnish Zeppelin mail of 1930. EMV = \$8, Starting Bid = \$3.
10. **Norway:** *1871-1875 Issue, Skilling Denominations, Shaded Posthorns*, in English, by Jared H. Richter, Scandinavian Philatelic Foundation, Thousand Oaks, Calif., 1983, 50 pages, profusely illustrated, paperback, good condition. Useful handbook incorporating many earlier studies that describe this issue's production, types, plating and varieties. CMV = \$7.50, Starting Bid = \$3.
11. **Norway:** *1877-1878 Issue, Øre Denominations, Shaded Posthorns*, in English, by Arnstein Berntsen and Gunnar Steen and Jared H. Richter (Editors), Scandinavian Philatelic Foundation, Thousand Oaks, Calif., 1983, ii + 58 pages, profusely illustrated, paperback, good condition. Useful handbook incorporating this issue's production, types, varieties and plating. CMV = \$7.50, Starting Bid = \$3.
12. **Sweden:** *Catalogue (Katalog 3)* for the Stockholmia 74 International Stamp Exhibition, in Swedish and English, 278 pages, profusely illustrated in color, softbound, age-stained cover, otherwise excellent condition. Contents include detailed articles in English on Swedish covers during the 1855-58 Skilling-Banco period, the Swedish collection of the Postal Museum in Stockholm, Swedish mails in the Baltic area, Sweden's 1916 military postal stationery, Argentina's Corrientes Province stamps and Suez Canal ("Canal Maritime de Suez") local stamps. EMV = \$6, Starting Bid = \$1.50.
13. **Sweden:** *Trelleborg – Sassnitz, 1897-1945*, in Swedish, by Ingemar Wägerman, SFF (Sveriges Filatelist-Förbund), Stockholm, 1990, 146 pages, profusely illustrated, ISBN 91-85702-218, softbound, pristine. SFF Specialized Handbook No. 26, history of the railroad and ferry service postal connections between Sweden and Germany that linked Northern Scandinavia to Europe during this period, showing many examples of covers, includes four-page summaries in English and German. EMV = \$35, Starting Bid = \$10.
14. **Philately/Worldwide:** *Linn's Stamp Identifier*, Donna O'Keefe (Editor), Amos Press, Sidney, Ohio, 1993, 130 pages, profusely illustrated, ISBN 0-940403-52-8, softbound, pristine. Scarce, out-of-print guidebook deemed the most definitive, easy-to-use and accurate stamp identifier ever published. CMV = \$23, Starting Bid = \$6.
15. **Locals/Scandinavia/Worldwide:** *Handbook of the Private Local Posts*, in English, by E. F. Hurt and L. N. & M. Williams, *Billig's Specialized Catalogues*, Volume 6, Fritz Billig, Jamaica, N.Y., 1950, 168 pages, profusely illustrated, hardbound, pristine. Classic reference — the completely revised edition of Hurt and Williams *Priced Catalogue of Local Postage Stamps* that includes extensive listings for all the world's locals, including Denmark, Finland, Norway and Sweden. CMV = \$40, Starting Bid = \$16.
16. **United States:** *Encyclopedia of Plate Varieties on U.S. Bureau-Printed Postage Stamps*, by Loran C. French, Bureau Issues Association, Inc., Arlington, Mass., 1979 xii + 338 pages, profusely illustrated, hardbound, pristine. Starting with a useful two-page discussion on what constitutes plate varieties, this "road map to flyspecking" goes on to cover the 1894 through 1978 regular issues, commemoratives, airmails and other "back-of-the-book" stamps. Particularly beneficial to Washington-Franklin issues enthusiasts. CMV = \$40, Starting Bid = \$16.

- 17. United States:** *Specimens of Stamped Envelopes and Wrappers of the United States*, by John R. Weimer, M.D., United States Postal Stationery Society, Redlands, Calif., 1991, 96 pages, illustrated, hardbound, pristine. Definitive specialized priced catalog listings of "Specimen" envelopes prepared on direct order of the U.S. Post Office to provide examples of envelopes currently in use; these specimens were not valid for postage and therefore are not known (or priced) used. CMV= \$25, Starting Bid = \$6.
- 18. United States:** *United States Commemorative and Special Printed Stamped Envelopes, 1876-1965*, F. L. Ellis and William H. Maisel (Editors), published by W. H. Maisel, Lutherville, MD, 1974, 88 pages, profusely illustrated, paperback, pristine. Definitive monograph on the six U.S. commemorative stamped envelopes issued from 1876 to 1965. EMV= \$15, Starting Bid = \$4.
- 19. United States/Balloon Mail:** *Catalog of Classic American Airposts and Aeronautica 1784-1900*, by Robert Schoendorf, Postilion Publications, Southfield, Mich., 1982, v + 99 pages, profusely illustrated, ISBN 0-941480-00-3, hardbound, pristine. His well-researched primer on balloon mail in the United States purports to include all known flown mail, dropped written or printed messages, balloonists' envelopes, leaflets, stationery, letters and other items with an aeronautical theme. CMV= \$25, Starting Bid = \$10.

The rest of the lots in this auction are from a generous donation by an unexpected source in Denver, Colo. All these items are outside the scope of the SCC Library collection holdings and are offered here at opening bids that are substantially lower than catalog values and/or dealers' retail list prices.

Sweden: *Gåva till våra abonnenterna / Gift to our subscribers* — PFA presents an annual complimentary gift to its subscribers, not available from PFA through its retail price lists or other means. These gifts, seldom offered in the philatelic aftermarket, are wonderful ancillary collectibles for Sweden specialized and topical collections.

- G1. Sweden:** *Med tack for det gånge året / Many thanks for the past year*, unlisted official PFA 1981 Stockholm Post Museum complete stamp booklet measuring 86mm by 45mm with a pane of strip of 10 mint vertical-coil nondenominated stamps, engraved by Arne Wallhorn to commemorate the 75th anniversary of the establishment of the Museum in 1906, includes a separate PFA presentation card, pristine, seldom-offered. EMV = \$50, Starting Bid = \$20.
- G2. Sweden/Slania:** *Gåva till våra abonnenterna 1987*, official PFA-produced, Slania-engraved Oct. 10, 1987, circus souvenir sheet issue, Scott 1654-1656 variety/Facit 1467-1469HBL, imperforate pane consisting of three souvenir sheet designs with progressive colors (full color, red and engraved blue only, and engraved blue only), tipped into a 148mm by 219mm presentation folder, scarce item. Facit undervalues this item at SEK200 (~\$31) as dealers who have it in stock are pricing it at \$45 to \$50. CMV = \$47.50, Starting Bid = \$19.
- G3. Sweden/Topicals:** *Gåva till våra abonnenter*, five (1986 and 1988-91) gifts comprising 148mm by 219mm card (1986) and folders (1988-91); items have pasted-down stamp issues (respectively, Scott 1351, 1713-1718, 1761, 1829-1830 and 1903a, cat. \$13.30 as used stamps) tied by special PFA circular datestamps. Nice topical items representing fine arts, birds, ships, Christmas and iron mining. EMV = \$15, Starting Bid = \$6.
- G4. Sweden:** Three PFA presentation items: 1973 *Mot Fjärran Mål / To Faraway Places*, 16-page trilingual (Swedish, English and German) booklet on celebrated Swedish explorers, containing explorer set of five (Scott 1005-1009, cat. \$5.50 as used singles) tipped inside front cover and tied by Sept. 22, 1973, FDI postmarks plus 1974 Stockholmia folder with Oct. 7, 1972, complete booklet pane of 10 (Scott 950a, cat. \$10 used) tipped inside and tied by Sept. 22, 1973, FDI postmarks plus Carl XVI Gustaf-Silvia Sommerlath wedding issues (coil and booklet stamps, Scott 1163-1165, cat. 80¢) tipped inside and tied by June 19, 1976, FDI postmarks. Nice ancillary specialist items. EMV = \$16, Starting Bid = \$6.
- G5. Sweden:** May 15, 1990, Equestrian Games mint booklet pane of six (Scott 1818a, valued at \$10) mounted in official PFA tri-fold presentation pack, trilingual text (Swedish, English and German). CMV = \$12, Starting Bid = \$3.
- G6. Sweden:** *Resa i Sverige / A Journey through Sweden*, PFA sealed pack of two back-to-back approval cards with 18 mint stamps (ranging from Scott 747 to 1242-1247, cat. \$10.85). EMV = \$12, Starting Bid = \$3.
- G7. Sweden:** Bulk lot of 14 assorted postal stationery items consisting of used postal card (Facit 4) with FDI postmark, PFA pack of five unused aerograms (Facit 3), four used aerograms (Facit 6-9) with FDI postmarks and four used post brevs (letter sheets) (Facit 6-9) with FDI postmarks, Facit = SKK195 (~\$30), nice starter grouping at a low starting bid. EMV = \$30, Starting Bid = \$3.

G8. Greenland: Grønlands Postvæsen sealed pack of an approval card with nine mint stamps (Scott 747 44, 45, 66, 68, 71, 76, 77, B3, and B4, cat. \$13.70). EMV = \$15, Starting Bid = \$4.

Sweden Stamp Booklets: The next 24 lots consist of pristine (mint, as-issued, completely intact) PFA booklets for each year cited. 1968-91 contain all booklets issued for those years except where missing ones are noted in the lot descriptions. The lots may also contain mint miniature sheets (s/s) where booklets were not issued for the format. Scott lists and values only the mint booklet panes, whereas Facit lists and values the as-issued entire booklets; consequently, Facit values are more reflective of actual market prices and are used here. Facit H numbers are for regular booklets and HA numbers are for slot-machine booklets. Note that under the stamp listings, Facit values booklets that exist with variant types at "starting at" values, the minimum for the most common type. Facit values the variant type booklets in its specialized listings for booklets after the stamps section. Most variant types command a premium and some are modern rarities! Booklets offered here are assumed to be the most common types at the Facit minimum values. However, cylinder, plate and control markings appear on some of the booklets in these lots, and if that is an important consideration for your bidding, request an email list from Roger Cichorz at rcichorz@comcast.net. Starting bids (SB) for these lots will be 25% of the Facit "starting at" values regardless of what variants are present! Several lots contain duplicate booklets, but these duplicates usually will have variations in cover color shades or intensities, or some other subtle notable differences. Please note that the 24 lots for 1967-68 through 1991 will be combined and sold as a single lot (see lot B25) if the high bid for B25 exceeds the respective high bids on the individual lots.

- B1.** 1967 (4) + 1968 (all, 16) – H198-H210 (2x H203) + H213-H216, Facit = SEK1066 (~\$163). SB = \$41.
- B2.** 1969 (all, 18) – H217-H220 + H222-H230 + HA18 (5x) + s/s (3x Facit #657-62BL2/Scott #821), Facit = SEK1315 (~\$201). SB = \$50.
- B3.** 1970 (all, 15) – H231-H240 (2x H234, 2x H237A) + HA19 (3x), Facit = SEK794 (~\$122). SB = \$31.
- B4.** 1971 (all, 14) – H241-H252 + HA20 (2x), Facit = SEK990 (~\$152). SB = \$38.
- B5.** 1972 (all, 15) – H253-H262 (4x H260) + HA21 (2x), Facit = SEK738 (~\$113). SB = \$28.
- B6.** 1973 (10) – H263-H271 (missing H266) + HA22 (2x) + strip of 5 (Facit #832-36H270HBL5), Facit = SEK512 (~\$78). SB = \$20.
- B7.** 1974 (all, 8) – H272-H279 + s/s (Facit #892-901BL4/Scott #1101), Facit = SEK509 (~\$78). SB = \$20.
- B8.** 1975 (all, 10) – H280-H286 (2x H285) + HA23-HA24, Facit = SEK472 (~\$72). SB = \$18.
- B9.** 1976 (all, 8) – H287-H294, Facit = SEK420 (~\$64). SB = \$16.
- B10.** 1977 (all, 10) – H295-H304, Facit = SEK525 (~\$80). SB = \$20.
- B11.** 1978 (all, 8) – H305-H312, Facit = SEK508 (~\$78). SB = \$20.
- B12.** 1979 (5) – H314-H318 (missing H313) + s/s (Facit #1095-98BL5/Scott #1295), Facit = SEK332 (~\$51). SB = \$13.
- B13.** 1980 (9) – H319-H328 (missing H321) + s/s (Facit #1135-40BL6/Scott #1334) + mint coil strip of ten KCGXVI with "330" control no. on back of stamp 1 (Facit #1131), Facit = SEK887 (~\$136). SB = \$34.
- B14.** 1981 (all, 8) – H329-H334 (2x H333) + HA25 + s/s (Facit #1185-89BL7/Scott #1386), Facit = SEK1844 (~\$282). SB = \$71.
- B15.** 1982 (all, 7) – H335-H341 + s/s (Facit #1222-25BL8/Scott #1419), Facit = SEK897 (~\$137). SB = \$34.
- B16.** 1983 (all, 7) – H342-H348 + s/s (Facit #1270-74BL9/Scott #1473), Facit = SEK850 (~\$130). SB = \$33.
- B17.** 1984 (all, 9) – H349-H356 (2x H354) + s/s (Facit #1317-21BL10/Scott #1516), Facit = SEK717 (~\$110). SB = \$28.
- B18.** 1985 (all 8) – H357-H363 + s/s (Facit #1366-68BL11/Scott #1553), Facit = SEK988 (~\$151). SB = \$38.
- B19.** 1986 (10) – H364-H373 (missing H371) + HA26 + s/s (Facit #420-23BL12/Scott #1611), Facit = SEK1286 (~\$197). SB = \$49.
- B20.** 1987 (all, 9) – H374-H382, Facit = SEK1277 (~\$195). SB = \$49.
- B21.** 1988 (all, 9) – H383-H391, Facit = SEK1328 (~\$203). SB = \$51.

B22. 1989 (all, 10) – H392-H401, Facit = SEK1476 (~\$226). SB = \$57.

B23. 1990 (all, 10) – H402-H411, Facit = SEK1474 (~\$226). SB = \$57.

B24. 1991 (all, 10) – H412-H421, Facit = SEK1289 (~\$197). SB = \$49.

B25. Combined lot of PFA booklets from 1967-91: The 24 previous lots as described, offered as a single lot, a massive, comprehensive collection of 247 as-issued intact booklets, almost complete for the period, Facit H198-H421 and HA18-26 (missing only H266, H313, H321, and H371) + 12 souvenir sheets + one booklet pane + one coil strip. Facit = SEK22,494 (~\$3424). Minimum starting bid @ 25% Facit = \$850, but a realistic suggested bid for this lot that assumes bids for the individual lots will exceed the starting (minimum) bids is \$1,025 (~30% Facit). Note in the Terms of the Sale for this auction that the bidding increments for this lot are \$25 over its minimum starting bid of \$850.

Prices Realized – SCC Library Auction #32 (Closed Oct. 1, 2013)

Summary: For this auction, there were 14 bidders, 12 of whom were successful in winning one or more lots. A total of 36 of the 39 lots sold, with realizations totaling \$439 against cumulative starting bids of \$364.50.
Results: #1 = \$28, #2 = \$5, #3 = \$4, #4 = \$2, #5 = *\$2, #6 = *\$8, #7 = \$14, #8 = \$9, #9 = \$15, #10 = \$23, #11 = \$11, #12 = \$8, #13 = \$27, #14 = \$10, #15 = \$3, #16 = \$5, #17 = \$32, #YP1 = \$10, #YP2 = *\$6, #YP3 = \$8, #YP4 = \$29, #YP5 = \$23, #YP6 = \$28, #YP7 = \$21, #YP8 = \$7, #YP9 = \$10, #YP10 = \$15, #YP11 = \$9, #C1 = NS, #C2 = NS, #C3 = NS, #C4 = \$10, #C5 = \$6, #C6 = \$18, #C7 = NS, #C8 = \$20, #C9 = \$1, #C10 = \$2.50, #C11 = \$3.50, and #C12 = \$6. Asterisks (*) by the realizations for lots #5, 6 and YP2 indicate tie high bids; these lots were sold to the earlier high bidders. NS indicates lots #C1, C2 (note C1+ C2 = C3), and C7 did not sell and are available for their starting bids on a first-come, first-served basis. Contact Roger Cichorz, rcichorz@comcast.net or (303) 494-8361, if you are interested in purchasing any of these three lots. ■



Scandinavia

The Scandinavian Specialist since 1973

- Building fine collections for exhibition, research, and enjoyment. Offering approvals from your specific want list or a description of your specialized interests.
- Complete private treaty services for your Scandinavian material.
- Active buyer of complete collections or individual items. High prices paid. Avoid the delays and uncertainty of auctions. I have many customers for your good material.
- Providing over 400 titles of philatelic literature and catalogs for the Scandinavian collector.

Call toll-free 1-800-44-STAMP (1-800-447-8267)

Phone: 336-376-9991 Fax: 336-376-6750

email: js@JaySmith.com www.JaySmith.com

Jay Smith

P.O. Box 650-SCC Snow Camp, NC 27349 USA

Auctioneer of rare stamps

Specialities:

Scandinavian stamps and covers.

Classic stamps and covers of the World.

Large collections and accumulations.



Catalogue available at www.postiljonen.com
or through subscription.

Consignments are always welcome!

AuctionHouse international

Postiljonen

We value your collection

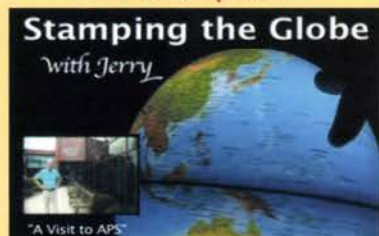
Box 537 • SE-201 25 Malmö • Sweden • Tel. +46 40 25 88 50 • Fax. +46 40 25 88 59
www.postiljonen.com • stampauctions@postiljonen.se

northstamp.com

*Remember the
thrill of buying your
first stamp ever?*

At **northstamp.com** you'll get that old feeling of wonder again as you discover a tremendous variety of specialized stamps and covers... our new "Stamping the Globe" video series... plus monthly coupons, discounts and special promotions. We've been helping collectors find great stamps since 1975. **Treat yourself to the thrill today!**

Watch our new video series at
northstamp.com



"A Visit to APS"
"The Stamp Market Today"
"Neither Rich Nor Royal"
"My Wish List"
"Greenland Pakke Porto's"
"Perfecting the Perf"
"Big Covers"
"It's Greek to Me"

...like a candy store
for stamp shoppers!

northstamp.com

NORTHLAND INTERNATIONAL TRADING, LLC

80 Bloomfield Avenue, Caldwell, New Jersey 07006

973-226-0088 • 800-950-0058 • northstamp@aol.com • Fax: 973-403-2601

