

The POSTHORN

Index to *The Posthorn*, Volume 71, 2014

Subject Index

Issue/Page

Book Reviews

| | |
|--|------|
| <i>Arendal Local Post Catalogue: History and Postmarks</i> | 3/26 |
| <i>Classic Sweden: The Golden Collection of Swedish Philately</i> | 1/22 |
| <i>Fakes Forgeries Experts No. 17</i> | 2/24 |
| <i>Håndbok over Norges Frimerker: Utgave 1877-1878, NK 25</i> | 1/23 |
| <i>Icelandic Numeral Cancels 1903-1960</i> | 2/24 |
| <i>Lysebilder presenteret i PowerPoint</i> | 2/23 |
| <i>Reidun and the Kvarstad Women</i> | 1/21 |
| <i>Spitsbergen's Early Postcards: An Annotated Catalogue 1891-1914</i> | 3/26 |
| <i>Sweden in Philately up to 1920</i> | 3/25 |
| <i>XpoNAT I-V (Stamp and Postal History Exhibits)</i> | 1/24 |

Denmark

| | |
|--|------|
| A Danish Skilling Bicolor with both Inverted Frame and Watermark | 4/22 |
| 21st Century Cigarette Taxpaid Strips from Denmark | 3/21 |

Faroes

| | |
|---|------|
| 1893 Postal Stationery Postcard from Faroe Islands to Germany | 4/25 |
| 1897 Stationery Card from the Faroe Islands to Germany | 3/19 |

Finland

| | |
|--|------|
| Finland's Seal Stamps and Postal Receipts | 4/4 |
| Finnish Stamps Win Three International Design Awards | 4/24 |
| Mixed Franking in Finland 1891-1917 | 1/8 |
| The Golden Ear Postal Stationery Cards of Finland: A Problematic Variety | 2/15 |

Iceland

| | |
|--|------|
| Questions on the Use of Numeral Cancels: Part II | 4/23 |
|--|------|

Norway

| | |
|---|------|
| Norway's First International Stamp Exhibition | 2/17 |
| Norway's Prestamped Postal Cards Issued during the Period of Occupation | 2/6 |

Obituaries

Sigurður Holm Þorsteinsson 1/34

Scandinavia

Auction Marketplace 1/18, 2/20
 Divided Postcards: Their Introduction and Early Postal History in Scandinavia 3/6
 NORDIA 2014 a Big Success! 4/20
 Scandinavian Area Awards 1/33, 2/33, 3/36, 4/31
 Scandinavian Philatelic Foundation Closes 2/4
 Scandinavian Literature Notes 1/35, 2/35, 3/35, 4/35
 Transfers and Re-Entries 1/32, 2/32, 3/33, 4/33

Scandinavian Collectors Club

Chapter Reports 1/32, 2/32, 3/32, 4/32
 Editor's Letter 1/2, 2/2, 3/2, 4/2
 From the Stacks 1/26, 2/26, 3/37, 4/37
 Matt Kewriga Wins SESCAL Grand 4/17
 News from the Home Office 1/30, 2/30, 3/30, 4/30
 President's Letter 1/3, 2/3, 3/3, 4/3
 SCC Budget for FY 2011 + 2012 1/39
 SCC Budget for FY 2013 + 2014 2/29
 SCC Election Results 4/18

Sweden

A Swedish Postmark Quandary 4/24
 Sweden's First Aerogram 1/7
 Sweden's 2014 EUROPA Issue Features the Nyckelharpa 2/19

The POST HORN

**Identifying a Finnish
Cork Cancel
Page 6.**



**A "Destroyed" Stolen
Cover Recovered!**
(Page 22)

**Stamping Around
Norway
Page 29.**



Stamps at auction

Online stamp auctions

Online auctions are held at 6 pm on alternate Sundays (even weeks) at bruun-rasmussen.dk.

The auctions feature material in all categories of stamps, postcards and postal history.

Traditional auctions in Copenhagen

Besides the online auctions, Bruun Rasmussen conducts traditional stamp auctions twice a year in Copenhagen.

For further information, visit us at bruun-rasmussen.dk

Contact Lars Godsk Jørgensen at the stamp department, e-mail: lgj@bruun-rasmussen.dk or tel: +45 8818 1211.



BRUUN RASMUSSEN
FRIMÆRKER

Baltikavej 10
DK-2150 Nordhavn
Tel +45 8818 1111

Søren Frichs Vej 34 D
DK-8230 Åbyhøj
Tel +45 8818 1100



Official Publication of the Scandinavian Collectors Club
Published Quarterly Since 1943

Vol. 72, No. 1

February 2015

Whole No. 282

Table of Contents

| | |
|---|--------------------|
| Finland: A Case Study; Identifying a Cork Cancel Ed Fraser..... | 6 |
| Unique Lindbergh Cover: A Clarification James Aage Valade..... | 11 |
| SCC Historian Requests Documents | 13 |
| Stamping Around Norway..... Steve Lund..... | 15 |
| A “Destroyed Stolen Cover” Recovered! Some Additional Notes on the Consequences Germann Censor returned mail Ed Fraser..... | 22 |
| Under Review: | |
| <i>Tabellarius 2014</i> | Alan Warren.....27 |
| <i>Norgeskatalogen Postal II</i> | Alan Warren.....27 |
| Obituary: Erik Hvidberg Hansen | Alan Warren.....36 |

Departments

| | | | |
|---------------------------------------|----|---------------------------------------|----|
| Auction Marketplace | 20 | Scandinavian Literature Notes | 34 |
| Chapter Reports | 32 | SCC & Scandinavian Show Calendar..... | 8 |
| Editor’s Letter from Scandinavia..... | 2 | SCC Auction #38 | 39 |
| From the Stacks..... | 37 | SCC Auction #37 Prices Realized..... | 44 |
| Member Advertisements | 4 | SCC Chapter Meetings & Contacts | 28 |
| News from the Home Office | 31 | SCC Member Services | 16 |
| President’s Letter | 3 | SCC Officers | 30 |
| Scandinavian Area Awards | 33 | Transfers and Re-Entries | 33 |



Editor's Letter from Scandinavia, kind of...

By Wayne L. Youngblood

Wanted: Your records

On Page 13, you'll find a bit of an unusual request, but one I'd like to underscore for its importance. As we enter into our 80th anniversary year, SCC historian Roberta Palen is asking for records, reports and other documents related to our organization – not those of the distant past (although those are always welcome as well), but those of our recent past, mostly 1991-2005, including hard copies of relevant emails.

Why the plea now? Well, many of the requested documents are not present in our archives, yet they are recent enough that a number of us may still have them around. Obviously, as museums and other organizations are increasingly finding out, it is far easier to gather important records either contemporaneously with their creation, or within their recent past.

Do take a look through your materials and even in your electronic records, and please don't assume we may already have a copy in our files. If there is duplication, it's always easier to discard duplicates than to attempt to gather what no longer exists.



Member Advertisements

You'll also note that – at least for this issue – I've moved the Member Advertisements page to a spot very near the front of the magazine (Page 4).

I've recently run several reminders that member advertisements continue to be free to all members and are still one of our society's best-kept secrets. There has been a great response, with several members now taking advantage of this great member service.

These classified-style advertisements allow you to locate material you are searching for, sell an item or two that no longer meet your collecting needs and to similar-minded collectors for exchange of information or material.

A simple word ad, emailed to the editor (or send hard copy if you do not have email), will be inserted in the next available issue. You may either run a single insertion or as many as you'd like. However, if possible, please let me know how long you'd like your ad to run. As long as there is space on the page, we're happy to help with your collecting activities.

As I've mentioned before, you'll likely be surprised by the results! ■



A Journal of Scandinavian Philately
www.scc-online.org

EDITOR and GRAPHIC DESIGNER

Wayne L. Youngblood
4615 Lindell Blvd Apt 1102
St. Louis MO 63108 (USA)
wystamps@gmail.com

BUSINESS MANAGER

Darryl Templer
PO Box 2911, La Jolla CA 92038-2911 (USA)
dtempler1@att.net

MEMBERSHIP INQUIRIES

Steve Lund, Executive Secretary
PO Box 16213, St. Paul MN 55116
steve88h@aol.com (USA)

EDITORIAL BOARD

Bjørn Mugerud, Norway
Paul Nelson, Arizona
Alan Warren, Pennsylvania

Contributors are asked to send their submissions to the Editor. Electronic submissions are preferred. Text should be in Microsoft Word and include bibliographic references. Graphics should be scanned at a minimum of 300 dpi, preferably in .tif format. Color photocopies of illustrations are acceptable if electronic versions are unavailable. Contact the Editor with any questions. Unless otherwise requested by the author, published material may be reproduced on the SCC Website, www.scc-online.org.

POSTMASTER: Send address changes to The Posthorn, SCC Executive Secretary, PO Box 16213, St. Paul MN 55116.

© Copyright 2015 by the Scandinavian Collectors Club, a 501(c)3 nonprofit organization. All rights reserved.

Permission to reprint must be obtained from the Editor. The opinions expressed are those of the authors and not necessarily endorsed by SCC, its officers, or staff.

The Posthorn (ISSN 0551-6897) is published quarterly by the Scandinavian Collectors Club, SCC Executive Secretary, PO Box 16213, St. Paul MN 55116. Membership, including subscription, \$30 per year; \$35 in Canada and \$40 for addresses outside North America. Contact the Executive Secretary for membership and change of address. Advertising rates and terms available from the Business Manager. Periodical postage paid at St. Paul MN 55116 and at additional entry offices.

President's Letter

By Steve Lund

SCC Celebrates 80 Years!

The SCC kicked off its 80th anniversary at AmeriStamp Expo 2015, held Feb. 13-15, 2015, in Riverside, Calif. Darryl Templer, Don Brent, Herb Volin and Eric Roberts hosted the SCC society table, where several members received their free books. An SCC dinner was held Friday, Feb. 13, at 6:30pm, at the Riverside Marriott Hotel. The banner and books have now migrated north, where SCC will continue its celebration at Westpex, April 24-26, 2015. A special thanks to all who helped make this successful.



Scandinavian Philatelic Foundation Books

In the February 2014 edition of *The Posthorn* it was reported that the SCC received the assets of the Scandinavian Philatelic Foundation, including more than \$15,000. The assets also included more than 1,600 books, consisting mostly of translations of Scandinavian handbooks and catalogs from the 1980s. It is the vision of the Board of Directors that these books are better off in the hands of its members than in storage. Any current member can receive a free book available at SCC society tables at AmeriStamp 2015, Minnesota Stamp Expo, July 17-19 or at APS StampShow in Grand Rapids, Mich., Aug. 20-23, 2015.

Swedish Ring Study Group

One of George Kuhhorn's 2015 New Year's resolutions is the revival of the dormant Swedish Ring Study Group. His effort will consist of three parts. On July 16, prior to Minnesota Stamp Expo, George will offer a class on the issues. Secondly, he will submit regular short articles on the issues to *The Posthorn*, for your enjoyment and use. Finally, a "Ring Blog" will be developed on the SCC website. George can be reached at geostamps@gmail.com.

Frimærkets Dag, July 16, 2015

Prior to Minnesota Stamp Expo, Chapter 14 will host Frimærkets Dag at the Danish American Center in Minneapolis. The event will start with several seminars on classic Scandinavian collecting areas. Mart manager, Viggo Warmboe, will have the complete inventory of SCC mart books available from which to purchase. The event will conclude with Chapter 14 Auction. Visiting SCCers who wish to consign items may contact Garrett Sainio at gcsainio@gmail.com. The Danish American Center will also host the 80th Anniversary Dinner on July 17, 2015, at 7pm.

SCC Group Tour to Stockholm/Nordia 2015

The ground package is advertised elsewhere in this edition. Borton Travel offered an SCC ground package for \$1998. However, working with Nordia 2015 Chairman, Mats Söderberg, the SCC will now be able to offer a similar package for only \$800! The plan is attractive to SCC spouses because it will offer optional day tours hosted by Stockholm philatelic spouses during the exhibition hours. The tour is designed to create relationships with Swedish collectors and is highlighted by a 80th Anniversary Luncheon at Treskillingen Restaurant at the Postal Museum.

Steve Opheim became the first SCC member to register for the tour and will combine it with his annual visit to Zurich. Because the SCC offer is a ground package, members have the option to piggyback it with other destinations. Steve also informed me of current low airfares available on expedia.com. The search I ran resulted in round-trip fare via Icelandic Air between Minneapolis and Stockholm for only \$846, making the entire cost (at least from here) lower than the original Borton offer. Don't wait. Enroll now.

New York 2016

World Stamp Show 2016 New York will be held May 28-June 5, 2016. Because of high fees and difficulties in staffing a 10-day show, the SCC Board of Directors has chosen not to host a society table. Member Hugh Galford (hgalford@verizon.net) will arrange a midweek SCC dinner at a suitable Scandinavian venue. Stay tuned for updates. ■

Member Advertisements

Wanted: Mail using or items related to using the Thomas Cook undercover mail schemes during both WWI or WWII. Reference copies also appreciated. Ed Fraser, edfraser@gmail.com, or 195 Marine St., Farmingdale NY 11735.



Wanted: Danish West Indies Printed Matter: King Christian XI local letter, King Christian X foreign letter, Coat of Arms Local Letter, and postal stationery cards with advertisements. Also 1917 Transition Period Letters. Arnold Sorensen, 7666 Edgedale Dr, Newburgh IN 47630, valbydwi@hotmail.com.



Wanted: Looking for help and information on Greenland AFA 283X. Please contact Henrik Rossell, 17405 Collier Way, Poolesville MD 20837, smoothrik7@hotmail.com.



For Sale: Complete set of Norske frimerkehefter (Norwegian Stamp Booklets) in Post Office covers from 1995-2008. Excellent condition. My cost USA \$1,120.80 Make offer. Contact John Hanson, 6100 D Street, Bay City OR 97107. (8/15)



jnrhanson@yahoo.com Wanted: Looking for the 1973 Greenland Heimaey semi-postal variety with the missing wharf (Facit 86 var) to use in an exhibit. A single would be nice but a multiple showing the position (position 9 in every third sheet per Daka GF5) is preferred. Please contact Joe Schlitt at wylecotejs@earthlink.net or PO Box 263, Knightsen CA 94548. (5/15)



Available: I have available for cost of shipping the following issues of *The Posthorn* between 1972 and present. They are designated as Whole Numbers: 111 (1972), 125-127, 129-141 (including supplements), 143, 158, 179, 181-184, 186, 188-191, 259-270; 272-280 (2014). I'll send the all or any parts as requested. First come, first served. Wavell Fogleman, wfogleman@roadrunner.com, USA. SCC #1975 (5/15)



Wanted: Looking for information or any covers related to the 1940-41 Richardson Pan-American Highway Expedition. Contact Wayne Youngblood, 4615 Lindell Blvd Apt. 1102, Saint Louis MO 63108 (wystamps@gmail.com).



Wanted: Abbott "Dear Doctor" Sodium Pentothal ad postcards: Iceland Erupting Geysers, Norway Fiords, and Sweden Klara Sjö och Stadshuset. Also, any Abbott cards with Swedish text mailed to doctors in Sweden and "Dear Nurse Anesthetist" (or without "Dear Doctor" salutation) variants, foreign-language texts, and others from 1964-68. Top dollar offered! Preparing illustrated catalog and need scans and/or color photocopies of rare cards as well. Contact Roger Cichorz, 3925 Longwood Ave., Boulder CO 80305-7233, email: rcichorz@comcast.net. ■

International stamp auctions
ENGERS frimerker

Klundbyvn. 103, N-2836 Biri, Norway. Tel.: 61 18 15 55. Telefax: 61 18 17 37. e-mail: post@engers-frimerker.no

YOUR PARTNER IN BUYING AND SELLING



From a fantastic coll. Denmark, sold for NOK 510.000 in sale 95

"Variety 1830" in complete sheet

Our international profile and trust bring exciting material to our auctions in Oslo every spring and autumn.

Great philatelic knowledge, 50 years of experience and our own authorized expert for Norway, as well as the best contacts within international expertizing give you the best guarantee for serious treatment and maximum profit from your consignment.

WELCOME !

For detailed information, price lists, agenda, latest auction catalogue etc. visit our homepage:

www.engers-frimerker.no

Finland: A Case Study

Identifying a Finnish Cork Cancel

Ed Fraser

In Great Britain, the Scandinavian Philatelic Society's magazine, *Contact*, of December 2013 (pages 301-304), had an overview I wrote of some ways to approach the identification of Finnish cork, or "figure," cancels using the Aaro Laitinen *1981 Suomen Kuvioleimat – Finland's Figure Cancellations – Price Catalogue*. I suggested making some homemade supplemental tables using the information from the catalog.

In going through the catalog, various additional ways of sorting the cancels will come to mind, and making tables for those various sorts might really simplify cancel identification. The tables I made for myself some years ago are briefly outlined in that *Contact* article. Nothing amazing; all are tables one might easily imagine, including a list of towns with the various cancels that town used, a list of cancels for each "overall scarcity" category, a list of cancels for each issue type, etc., etc. Basically, the tables are an effort

to make sorts that can simplify the number of pictures in the catalog to study to find a match and identify a cork cancel on a stamp or on a cover.

Here is an example using one of those tables to try to identify cork cancels on two stamps. Figure 1 shows two recently found cork-canceled stamps to use as test examples. The first is an "M1882" or "1882 Charta Printing Issue" a perf 12 ½, 20-penni stamp with a black ("musta" in Finnish) inked cancel, and an "M1885" or "1885 New Colors Issue" 1-mark stamp with a blue ("sininen") inked cancel. (Finnish descriptions often use "M" for "malli,"



▲ Figure 1. An 1882 20-penni and 1885 1 mark.

meaning "Model," plus the year, to indicate the stamp issue.)

These stamps were picked because they look distinctive and, especially, the 20 penni suggests the possibility of being a "new discovery." Even less likely, but interesting, is the possibility of finding a "missing link" – a cancel that ties two different ones together, showing that two different catalog-listed cancels are actually the same cancel. (The 1961 E.A. Hellman *Die Figurenstempel Finnlands*, the classic work on these cancels and a very important reference, did have a number of cancels that could be matched together by the time the 1981 catalog came out, but I only know of a couple being found since then.)

What is the most unusual or distinctive feature of both these unrelated cancels that might help me find them in the Laitinen catalog? First, recognize that grid-style cork cancels are often quite hard to identify because there are so many similar ones, and that can make it seem intimidating to try. However, a distinctive feature can help. I will pick for demonstration the feature that the grid's rows and columns are not at about 90 degrees to each other, as the majority of other grid cork cancels are. Going through the catalog – and some judgments will be subjective – a list like Table 1 can be made.

I could have picked to use a table of blue-inked cancels for the 1 mark 1885 issue, or perhaps a table of 1882 issue cancels, and of 1885 issue cancels – but those lists would be long. I could have guessed that the 1 mark cancel style looked like cancels of Östermyra, a short list, and the 20 penni resembled some of the Joensuu cancels, which happened to be a prolific user of many cork cancels, but that is a long list, too. Guessing towns (and many are still not identified to a town) probably requires having done a lot of work with these cancels and is a bit beyond me, anyway. Note that both of these cancels, while pretty well centered (and therefore likely identifiable), may not show a full or proper cross section allowing one to be sure of the vertical and horizontal grid count to

| 1875 | 1882 | 1885 | 1889 | 1891 | 1895 | 1901 | 1917 | 1930 | 1875 | 1882 | 1885 | 1889 | 1891 | 1895 | 1901 | 1917 | 1930 |
|------|------|------|------|------|------|------|------|------|------|------|------|------|------|------|------|------|------|
| 117 | M | | | | | | | | 251 | | | M | M | | | | |
| 117A | M | | | | | | | | 252 | | | M | | | | | |
| 117B | | | | | | | M | M | 258 | M | | | | | | | |
| 118 | MSV | MSV | SV | | | | | | 259 | M | M | | | | | | |
| 158A | M | | | | | | | | 260 | M | M | | | | | | |
| 159 | M | | | | | | | | 261 | | | MS | MS | | M | M | |
| 160 | M | | | | | | | | 261A | M | | | | | | | |
| 161 | M | | | | | | | | 262 | | | S | | | | | |
| 162 | | | M | | M | | | | 273 | | | M | | | | | |
| 165 | M | | | | | | | | 275 | | | M | M | | | | |
| 166 | M | | | | | | | | 284 | M | M | | | | | | |
| 168 | | S | | | | | | | 285 | | MV | | | | | | |
| 169 | | | | S | | | | | 286 | | | SV | S | | | | |
| 189 | M | | | | | | | | 287 | | | S | S | | | | |
| 190 | M | | | | | | | | 288 | | | S | | | | | |
| 191 | M | | | | | | | | 292 | | | | | | | | M |
| 192 | M | | | | | | | | 312 | | | M | M | | | | |
| 192A | M | | | | | | | | 322 | | S | | | | | | |
| 193 | M | | | | | | | | 323 | | | M | M | | | | |
| 194 | M | | | | | | | | 323A | | | M | | | | | |
| 195 | | S | | | | | | | 333 | | | M | | | | | |
| 195A | | S | | | | | | | 336 | M | | | | | | | |
| 196 | | SM | M | | | | | | 337 | | V | MV | | | | | |
| 197 | | | | M | | M | | | 339 | | | | | | V | M | |
| 211 | S | | | | | | | | 344 | M | | | | | | | |
| 211A | S | | | | | | | | 359 | M | | | | | | | |
| 212A | M | | | | | | | | 360 | SM | M | M | M | M | | | |
| 213 | | | S | | | | | | 361 | | | V | | | | | |
| 218A | | M | | | | | | | 367 | M | | | | | | | |
| 220 | MS | | | | | | | | 370 | | | M | M | | | | |
| 222 | | S | | | | | | | 370A | | | M | | M | | | |
| 223A | M | M | | | | | | | 381 | | MS | M | | | | | |
| 227 | | M | M | | | | | | 387A | | | | | | | | |
| | | | | | | | | | 388 | M | M | | | | | | |
| | | | | | | | | | 398 | | | M | | | | | |

▲ Table 1. The diamond-format grid cancels from No. 117-398, for issues from 1875-1930. In this chart, M=black; S=blue; V=violet; and two or three letters means those ink colors are all known.

be able to use the grid dimension numbers that the catalog uses. Additionally, especially for the 20-penni stamp, the grid count choices list is long, and the full cancel is likely round, so we can guess some of the cancel is probably missing.

Here the 20-penni cancel has the grids unusually far apart – something not illustrated in any of the “diagonal grids” of that size pictured in the catalog. However, for cancel identification, the prime rule is always to assume it matches a known cancel, starting with the most common possibility first. Here, it could be an early example, where use has not yet worn down a cancel device possibly made of softer material.

Table 1 is a copy of my personal working notes. Next to the column with the cork cancel number are the columns for each issue, and where that cancel is known on an issue, the color of that cancel ink is marked.

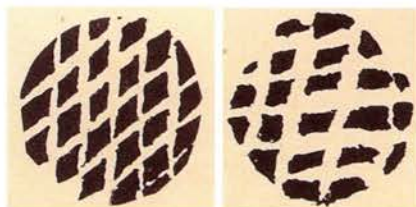
Using this table for the 1885 1-mark stamp first gives the “blue cancel” list of Table 2:

168, 195, 195A, 196, 222, 261, 286, 287, 322, 381
Above: Table 2. A list for the 1 mark possibilities from Table 1.

Now, for the 1882 20-penni stamp, here’s data in Table 3:

220, 223A, 259, 260, 284, 285, 360, 388
Above: Table 3. A list of the 20 penni possibilities from Table 1.

That’s actually quite nice. Being considered an “1882 issue” and not an “1875 issue” looks to make the list to check quite short! Now you need to work with the cancel catalog itself to see if you can cut down this list of 18 cancels to just a few – or perhaps eliminate them all. I leave that for you to try. The human eye really recognizes pattern similarity quite well ... sometimes. I find that I need to rotate the catalog picture sometimes, and sometimes also rotate the stamp, trying to imagine a match. When all this fails, I would



try it all again with the illustrations found in the 1961 Hellman reference for these same 18 numbers. At worst I am left with too many possible. Usually, though, with short lists like this, all but a couple are easily eliminated. For the final result – and assuming you are pretty sure about having narrowed down an identification – one more step is required.



▲ *Figure 2. Possible matches for the cancels on the Figure 1 stamps?*

If you are computer focused, one comparison method is done by scanning and then using Photoshop as an overlay. Another is to use a “blink comparator” to get the same result. Other computer methods can work fairly well if you can do that, but I resort to either tracing the cancel or the cancel picture on clear plastic to use as an overlay. That works quite well. Of course, if you have cancel copies as clear plastic overlays already, it’s even easier to do this step. In the end, though, many times it is still a “probability” identification that is not quite 100% certain. Other times the cancel match with the catalog or the 1961 book is amazingly good. Then, too, other previously identified examples of the same cancel on a

SCC and Scandinavian Show Calendar

2015

Minnesota Stamp Expo July 17-19 (SCC National Meeting), Minneapolis, Minn.

APS StampShow Aug. 20-23 (SCC booth and dinner), Grand Rapids, Mich.

Nordia 2015, Oct. 30 – Nov. 1, Täby, Sweden

2016

Nordia 2016, April, Jyväskylä, Finland

New York 2016, World Stamp Show, May 28-June 5, New York City, N.Y.

Chicagopex (SCC National Meeting), Nov. 18-20, Itasca, Ill.

2017

Westpex (SCC National Meeting), April 28-30, San Francisco, Cal.

Nordia 2017, Oct. 27-29, Vejle, Denmark

stamp can really help confirm an identification. Realize, though, that sometimes “previously identified cancels” are misidentified.

Back to our search here. I am not going to picture all of these 18, but I am not going to give a definite number answer, either. What I will show is my opinion of what two cancel illustrations taken from the catalog could look like to be a possible match, and the reader can decide if they do look like a match.

Additional notes: The cancel on the 20-penni stamp I will guess is an early use, which is why the individual grids are small and more widely spaced. Also, I will guess that it was made of a softer material, not metal, and that accounts for the change in the cancel over a probably short period of time. The catalog lists only known usages on the 1882 issue or 12 ½ gauge perforated stamps. A soft material might also make it easier for a partial cancel here, where the top part is pressed harder and the bottom part is not struck against the stamp. (That would also make using the catalog’s grid count sort a serious problem.) Of the 22 grids in the original illustration (and these were all hand drawn for the catalog back in 1981), this stamp shows about 19 of them (some partials) in about the right place. However, even though it happens to be a common cancel, it is still a difficult identification when off cover and without reference stamp examples at hand showing this cancel already correctly identified. It certainly does not immediately appear to be a match. It does indicate another problem with common (here listed as “F1” in the catalog) cancels – they were heavily used and the cancel quality can well change over time.

The cancel on the 1-mark stamp has the challenge of a couple of cancels looking very similar, used in the same period at the same post office. Part of the cancel is harder to work with because the blue ink is perhaps watery. Because the cancel was used for more than a decade, it may have been a metal canceler. However, that might be better guessed by looking at other examples of its usage.

And a question for you, the reader, at this point: Do you think this a proper cancel match for each stamp here? Would another be better?

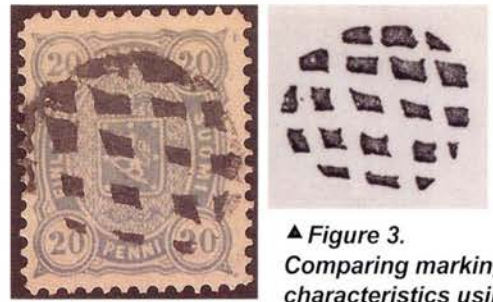
The value of further checking?

As I mentioned earlier, the E.A. Hellman 1961 book can be a helpful reference. Checking it, there are some additional pictures (drawings, actually) of examples of this same number “1882 cancel.” Rotating that picture for comparison, we see another potential match in Figure 3.

I find this quite impressive as a match. This shows a “5 by 5” grid match, and while possibly not as early a use, I’ll guess, it does compare more favorably here than the “5 by 6” grid examples pictured for this cancel in the 1981 catalog. Note, though, that the cancel still has kept the original Hellman “5 by 5” grid description in the 1981 catalog, and hence its same spot in the “Hellman” cancel numbering scheme. This cancel – and I think this happens more often with the more common cork cancels – demonstrates the help of having more reference pictures and/or different examples of the correctly identified cancel on stamps. This cancel also demonstrates the difficulty of being certain about the overall grid dimensions, from wear to pressure applied. ■

Comments, suggestions and questions are appreciated. The author may be reached at Ed Fraser, 195 Marine St, Farmingdale NY 11735, or by email: edfraser@gmail.com.

Footnote: Table 1 is approximate and subjective, and may well have omissions. Subsequent discoveries have not been added – but most of them are quite scarce cancels and would only have a very small chance of being a match.



▲ **Figure 3.**
Comparing marking characteristics using a cancel illustration from the 1961 E.A. Hellman reference guide.

International auctions in Oslo



We arrange international auctions in Oslo twice a year. Each time with a total turnover of approx. USD 1 mill. The auction catalogues feature 150-200 pages with full colour illustrations.

A complete Internet version is published 3 weeks prior to a sale. 70 to 90 % of items offered are of Scandinavian origin, but frequently important lots from a range of countries are included. So are coins & banknotes and postcards.

We invite you to take advantage of the fine opportunity to sell in one of the best markets for stamps in the world.

There is no government tax on stamp sales in Norway.

More information is to be found on

www.germeten.no

Mail: **germeten@online.no**

Phone: **+47 22 44 19 14**

MEMBER:
NFHF

KJELL GERMETEN A/S

INTERNASJONAL FILATELI FORMIDLING
TAKSERING RÅDGIVNING

OFFENTLIGE AUKSJONER

Unique Lindbergh Cover – A Clarification

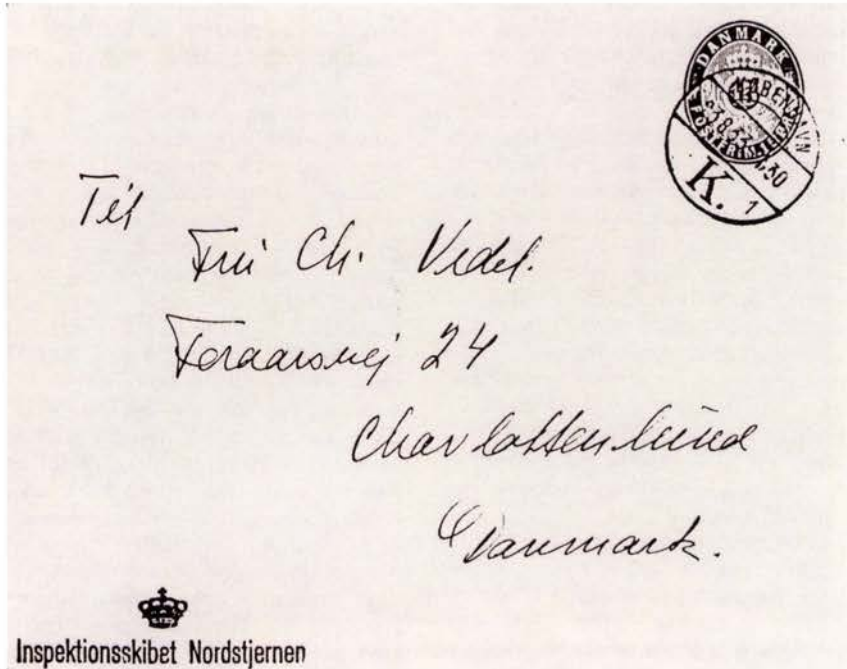
James Aage Valade

Note: In the February 1993 issue of *The Posthorn*, Les Winick et al described an unusual cover presumably carried by Charles Lindbergh in connection with his North Atlantic Survey flights (Figure 1, scanned from the article). With the help of the cover's owner at the time, Pall Asgeirsson, as well as the late Dan Laursen, Winick provided background information in his article. The cover contained a letter from Captain Aage H. Vedel of the M/S *Nordstjernen* to a relative in Denmark.

The ship was taking part in Knud Rasmussen's Seventh Thule Expedition, and was anchored at Angmagssalik, Greenland, when Vedel and Rasmussen met Lindbergh and his wife Anne and handed the letter to the aviator. The cover was flown by Lindbergh to Reykjavik and then went by ship to Copenhagen. Winick surmised that this was the only cover from East Greenland known at the time.

Winick also described the letter as being addressed by Captain Vedel to his wife Charlotte. In 2002, Cherrystone Auctions offered the cover in an auction,

using some of Winick's description. The grandson of Captain Vedel, James Aage Valade, realized that the addressee was not the Captain's wife, but his mother. James Valade corrects the error in the following article, and adds more detail about his grandfather:



▲ Figure 1. Cover sent by Capt. Vedel to his mother, scanned from February 1993 *Posthorn* article.



and adds more detail about his grandfather:

Aage H. Vedel was the captain on the *Inspektionsskibet Nordstjernen* (Figure 2), the base ship for aerial mapping surveys of the Angmagssalik

◀ Figure 2. Base surveying ship *Nordstjernen*, from Knud Rasmussen's Seventh Thule Expedition.



▲ *Figure 3. Crew of the Nordstjernen with Captain Vedel (1), Knud Rasmussen (2) and Captain Gabel Jørgensen (3), second in command of the expedition.*

region of East Greenland in 1933. Today, the town of Angmagssalik is known as Tasiilaq. The mapping surveys were part of a large joint-venture scientific expedition. While Lauge Koch directed many of the activities associated with this expedition, the *Nordstjernen* surveys were part of noted Greenlandic explorer Knud Rasmussen's Seventh Thule Expedition (Figure 3).

Rasmussen's 1933 expedition was his last, inasmuch as he died shortly after he returned to Denmark later that year. He is memorialized on several stamps from Greenland and Denmark, as well as by a large statue of a polar bear in the Copenhagen harbor—the departure point for his seventh expedition.

► *Figure 4. Aage H. Vedel, when he was promoted to Vice Admiral in 1942.*



Aage Vedel, as a career naval officer, was promoted to vice admiral in 1942 (Figure 4) and went on to become a Danish national hero during the German occupation of Denmark. In 1943 he gave orders to the Danish Navy to scuttle or flee in the face of ever more violent German efforts to clamp down on the Danes, who were engaged in increasing sabotage activities and strikes.

He was very close to his family and, while at sea and away from home, he frequently wrote to his family and friends. In 1933, as someone who hadn't seen his family in a while, and as a stamp collector, it only makes sense that he would have taken advantage of an opportunity to send mail via the Lindberghs.

Vedel was a noted stamp collector and maintained collections including one from his mother, from which this cover came. Charlotte Braem Vedel was his mother and the letter is written to her, and not to his wife Kirsten Lutzen Vedel. The family knows of at least one other letter written at this time and has been looking for others. While looking, they found expedition photographs and, interestingly enough, the ship's "Inspektionsskibet Nordstjernen" handstamp, complete with violet ink stains.

Following the death of Kirsten Vedel in the early 1980s, the stamp collections were sold as part of the family estate. It is likely that this letter was sold as part of the collections at that time. My sense is that the cover has more than just Lindbergh interest. In addition to collectors of Lindbergh and polar expedition ephemera and postal history, there are Scandinavian collectors who specialize in Vice Admiral Aage Vedel and Knud Rasmussen material as well. My guess is that this cover would appeal to these collectors and others. ■

SCC Historian Requests Documents

Scandinavian Collectors Club Historian Roberta Palen is looking for appropriate club documents to add to and be preserved in the archives. The following is a list of items she asks members to mail to her at PO Box 364, Forbes MN 55738. She will organize the documents for you.

- o Official correspondence to/from officers, 1995-2005.
- o Press releases, publicity, 1995-2005.
- o Financial records, 1991-2005.
- o Any annual reports (from Executive Secretary, chairs of committees, Stamp Mart managers or others), 1991-2005.
- o Minutes of meetings and attendance lists from regional and national meetings, 1995-2005.
- o Budgets, 2000-2005.
- o Paper copies of emails (official correspondence).
- o Material older than the 1980s or material more current than 2005, which will probably not be used in the future and can be used to document the history and organization of SCC.

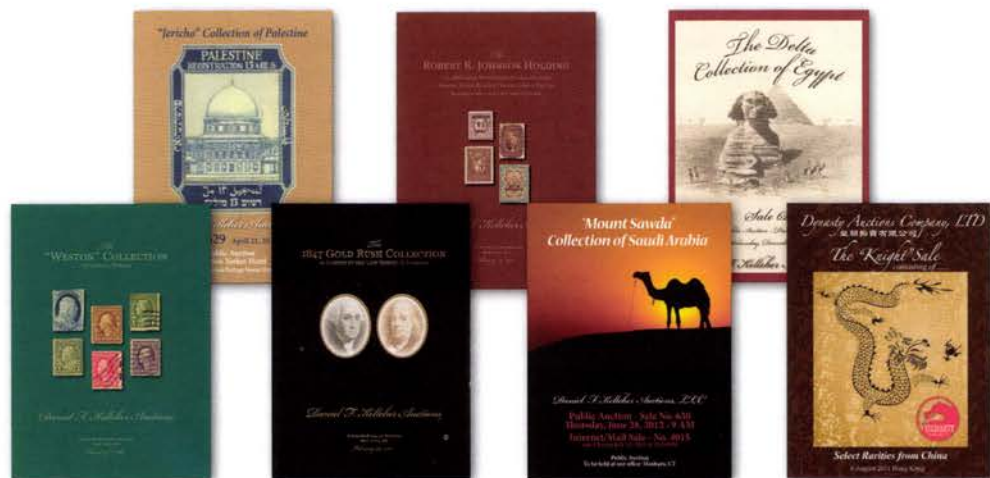
The last time there was a call for materials for the archives there was a significant response. Thank you to all who responded.

It is especially important for us to gather this material now, while it's likely still fairly readily available. This year marks the 80th anniversary of the founding of the SCC. We need to be able to document our history and to remember what has been done in the past. ■

***Please make it a personal goal
to recruit at least one
new SCC member this year.
It helps all of us!***

"Your Name" Here.

The greatest distinction when it's time to sell is YOUR NAME on the cover of a Kelleher Catalogue.



That's right, at Kelleher we have ALL the resources to produce the most luxuriant timeless reference catalog for YOUR most specialized collection in YOUR NAME. We will take great pride in bringing your important Scandinavian collection to market and in supporting every detail.

You will deal with Owner Philatelists of the 128-year old Kelleher firm who will handle every step of the process including each individual lot selection for YOUR NAME sale—individual lots, one at a time, the

same way your aquired them and tailored specifically to suit your needs and the markets.

Penetrate International markets with America's only Global auction house with a fully staffed office in Hong Kong and marketing that reaches hundreds-of-thousands of clients all around the world, as well as representatives in most major markets!

All available to you now! Join us now and find out how to achieve the success that your collection deserves.

Quite frankly, there is no better venue in the world for you when it comes time to sell your cherished Scandinavian Area collection.



Kelleher Auctions

Daniel F. Kelleher Auctions, LLC

America's Oldest Philatelic Auction House • Established 1885

info@kelleherauctions.com

www.kelleherauctions.com

60 Newtown Road, PMB 44

Danbury, CT 06810

203.297.6056 • Fax: 203.297.6059



Stamping Around Norway

Steve Lund



▲ Nordia 2014 featured 900 frames of exhibits. Shown above is a section of the show floor.

Prior to attendance at Nordia 2014, Lillestrøm, I visited four local Norwegian clubs.

Steinkjer Frimerkeklubb is located in the capitol city of North Trøndelag and meets twice per month in the old post office's second floor employee lunchroom. The club consists of 30-some members and is the "home club" to the nearby farms from which I am descended.



▲ Norwegian Postcard Collectors President Knut Arvang, with Alan Warren.

The Fall Large Auction, held Nov. 1, 2014, consisted of 200 philatelic items and 200 postcards. Twenty-five floor bidders and 40 mail bidders resulted in total gross sales of 50,000 Norwegian kroner! The Nov. 11, 2014, meeting, attended by 15 members, consisted of the sale of remainder lots and was conducted by President Reidulf Welde, and Treasurer Hugo Nordseth. Questions about the items were directed to member Geir Mule, who is a "walking" *Norgeskatalogen* with regard to classic stamps and cancels. Town cancel specialist, Arne Østråt, boasts a collection of some 630 of 700 known one-ring cancellations on red stamps.



▲ Steinkjer Frimerkeklubb, which meets twice a month.

The lunchroom also houses the club's substantial library of catalogs and handbooks. Mini-auctions and circuit books are the mainstay of the regular meetings and fulfill Steinkjer Frimerkeklubb's mission of buying, selling and trading of stamps and postcards between its members.

The third annual "Collectors Day," co-hosted by Nordenfjeldske Filatelistforening (NFFF)

and Trøndelag Numismatist Club, was held Nov. 15, 2014, in Trondheim. Knut Arveng, Norwegian Postcard Collectors Club President, made a presentation titled "Christmas Postcards History." Knut's exhibit of the same was later exhibited in the Master Class at Nordia. In Norway postcard collectors meet with the philatelic societies.

The large conference room was surrounded by stamp, coin and postcard dealers, including *Posthorn* advertiser



▲ *SCC* advertiser Engers Frimerker.

◀ Knut Glasø (left), Trondheim, 25-year *SCC* member with Steve Lund (right).

Engers Frimerker. Collectors met at several interior tables for coffee, sandwiches, conversation and showing of philatelic items. *SCC* member Knut Glasø was present and was awarded his 25-year certificate. *Posthorn* handbook co-author Jon Kvistedal was also in attendance. The main event was the Fall NFFF Auction, containing 478 lots, including many fine cancels, covers and postcards from Trondheim and North and South Trøndelag. Auctioneer Helge Kringtrø ably and rapidly hammered the event.

SCC Member Services & Contacts

| | | |
|------------------------------|--|---------------------------------|
| Stamp Mart (USA) | Viggo Warmboe, 2740 FoxgateDr. Minnetonka MN 55305 | viggo62@comcast.net |
| Stamp Mart (Canada) | Roger Fontaine, 9 Rochester Ave. Winnipeg, MB,R3T 3V6, Canada | stampman@mts.net |
| Website (www.scc-online.org) | Christopher Dahle, 1401 Lindmar Dr NE Cedar Rapids IA 52402-3724 | chris-dahle@fastermac.net |
| Membership Inquiries | Steve Lund, PO Box 16213, St. Paul MN 55116 | steve88h@aol.com |
| Local Chapters | See list in <i>The Posthorn</i> | See list in <i>The Posthorn</i> |
| Helpers' List/ Traders' List | George Kuhhorn, PO Box 4486, Emerald Isle NC 28594 | geostamps@hotmail.com |
| Complimentary Classified Ads | Wayne L. Youngblood, 4615 Lindell Blvd Apt 1102, St. Louis MO 63108 | wystamps@gmail.com |
| Library Services | Paul Albright, 4615 Hampshire St., Boulder CO 80301-4210 | palbright@wiche.edu |
| Study Groups | See list in <i>The Posthorn</i> | See list in <i>The Posthorn</i> |



▲ NFFF's Fall Auction was held at Collectors Day in Trondheim.

President, Brit Gullvåg, and NFFF will host the Norway National Stamp Exhibition at Scandic Hotel, Trondheim, June 1-3, 2015. Per Christian Stubban is Exhibition Chair.

Prior to attending Oslo Filatelist Klubb Nov. 17, 2014, local stamp shops were visited. Stein Kristiansen operates a stamp and postcard shop near the Parliament Building in Oslo Central. He also holds two auctions annually and unsold lots were available for purchase at minimum bids. Stein was away but the shop was ably staffed by Harry Lian and Kjell Vinje. A large inventory of catalogs (including many Michel and AFA which are widely used in Norway), handbooks and periodicals were available. Ragnar's stamp and postcard shop is across from Oslo City Hall. The shop's walls are lined with shelves housing boxes

containing Norwegian postcards and covers arranged by county. Ragnar is a jolly man and his shop was visited by several customers during the 30-minute visit on a Monday morning. As an avid reader of Norwegian criminal novels, Ragnar held discourse on authors Jo Nesbø, Unni Lindell, Anne Holt and Karin Fossum. Brunsæl Frimerkeforretning in



▲ Alan Warren stands outside Stein Kristiansen Stamp Dealer, Oslo.

► Ragnars Stamp, Postcard and Covers Shop.





▲ **Oslo Filatelisklubb members.** Grunnerløkka is only a 10-minute tram ride from Oslo Central. Owner Geir Brunsæl holds eight mail bid sales annually, consisting mostly of luxury cancels on classic and modern Norwegian stamps, postcards, country collections and mint Norway stamps. During my visit Norwegian Postcard Collectors President Knut Arveng dropped in. Knut was not there to buy or sell postcards but rather in the role of accountant to deliver Geir's quarterly tax return.

Oslo Filatelist Klubb meets weekly at Schafteflokken, a senior center, located near Frogner Park. The Nov.

17, 2014, meeting consisted of OFK's bi-monthly auction. President Bjørn Muggjerud greeted us. The 95 lots placed on a long table in the center of the meeting room were available for viewing at 6pm. At 7pm the lots were removed and the 18 attending members sat at the table's sides and stretched their numbered paddles to the middle of the table to bid. Auctioneer Thore Habberstad hammered down the lots rapidly and the entire auction including payment and receipt of the lots was completed in less than one hour. Bidding in Norwegian auctions is done by an old-time counting system where the last digit of bid is pronounced first such as 20, 2 and 20, 4 and 20, etc. instead of 20, 22, 24.

The Oslo Filatelist Klubb office is located on Frydenlundgata, with two rooms containing the club's large library, a business office, storeroom and kitchen. OFK publishes *Norgeskatalogen* annually. Unfortunately there was no 2014 edition due to the untimely death of Editor, Peer-Christian Ånensen. Instead, the club introduced the second edition of *Norgeskatalogen Postal*, a catalog containing cancels, rates and other postal history items. Bjørn Erik Rassmussen was at office on Nov. 17, where the boyish, tall, red-haired, ex-basketballer had received shipment of his newly published *Handbøk* about the 3- and 5-øre 20-mm unshaded Posthorn issues.

Bergen Filatelist Klub (BFK) was founded by shipping magnate Abraham Odfjell in 1911. He was a collector and writer who donated a complete imperforate sheet of an Oscar 4-skilling issue to the club, which sold the pane at auction to buy the house at Nye Sandviksvei 65, where the club holds its weekly Tuesday evening meetings. Hans Blom is president.



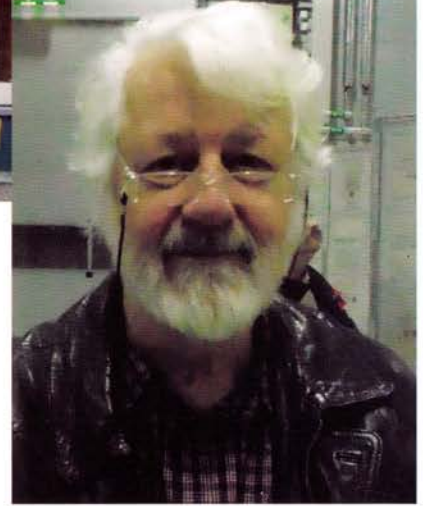
▲ **Bergen Filatelist Klub Meeting Room is owned by the club.**

Besides Odfjell, who published handbooks on Mexican philately, the BFK is home to many philatelic writers. Librarian Arne Eriksen recently published *Send meg eit brev frå Hardanger* (*Send me a letter from Hardanger*) and co-authored *Dar kjem damp – med post*



◀ **Frimerkehuset, Bergen.**

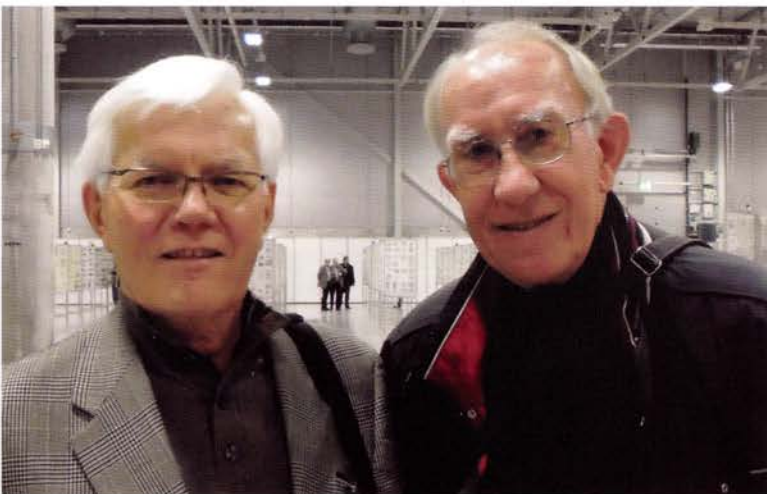
▼ **Danish SCC member Toke Nørby.**



(When the steamship came with mail) with Audun Hansveit. Jan Bødtker authored *Da Bergen hadde egen frimerker (When Bergen had its own stamps)* a history of Bergen's local post, and the definitive book on Norwegian postal rates, *Norske innenrikske Portotakster & Gebryer 1887-1995 (Norwegian domestic Postal Rates & Fees)* was written by Kristian Aune, whose father, Erling Aune, was President of Norsk Filatelist Forening from 1993-97. The club's quarterly publication, *Den blaa Løve (The Blue Lion)* contains many articles on both old and new Bergen area postal history by Bødtker and others. Arne Eriksen asserts, "One becomes more focused on postal history as one becomes older. It is splendid to follow an old letter from sender to receiver where the postmarks show the route."

The BFK "clubhouse" shelves the library's large holdings. The meeting room is well-equipped with a roof-mounted digital projector with screen and even features built-in wall exhibition frames! Meetings consist of circuit books, business agenda, social interaction, monthly auctions and presentations.

Bergen is home to *The Posthorn* advertiser Frimerkehuset AS (Stamp House) founded by F. C.



▲ **SCC's Eigil Trondsen received 96 points and Grand Prix International for Cunard Line. Gunnar Loshamn exhibited DWI Postal History in Championship Class.**

Moldenauer and located at Østre Skostredet 2. Besides the retail store now operated by his son, Caspar, F. C. Moldenauer AS holds an annual November auction in Oslo of about 2,000 lots and features fine classic Norwegian stamps and covers, as well as cancellations. It is one of Norway's finest auctions. There is also a fine website at www.frimerkehuset.no including a link to English. Sigmunds Samlermarked (Collector's Market) is located on Øvregatan 10 and operated by the jovial Sigmund Botnedal. His shop features stamps, postcards and coins as well as silver and old-fashioned jewelry. ■

Auction Marketplace

Frank Banke

F. C. Moldenhauer AS, Bergen, Nov. 7-8, 2014

The annual auction by F. C. Moldenhauer AS in Bergen, featured a catalog with a total of nearly 2,000 lots, all of them (except 150 lots) were Norwegian.



▲ Lot 1314, which sold for more than four times its starting bid, despite two missing stamps.

for \$10,100. A Norway collection of carefully selected and beautifully canceled stamps in a DAVO album (Lot 1000) started at \$6,200, but sold for \$15,000. An astonishing price was achieved for Lot 1309, a beautiful letter sent from Bergen to St. Petersburg franked with a strip of six 4 sk. 1855 (NK1). Although there are two stamps missing, the cover actually sold for \$34,300 starting at only \$7,800.



▲ Lot 1494, possibly the finest known MNH example of the 10-øre shaded Posthorn.

Another letter with NK1,

Lot 1314, single and a strip of three on cover from Brevig to Skien, 4th letter rate, almost doubled the starting price and sold for \$14,000. A rare multiple of the 4 Sk. 1863 Arms issue (NK8), the half sheet of 50 from plate IIa, Lot 1552, started at \$23,400 and sold for \$42,100.

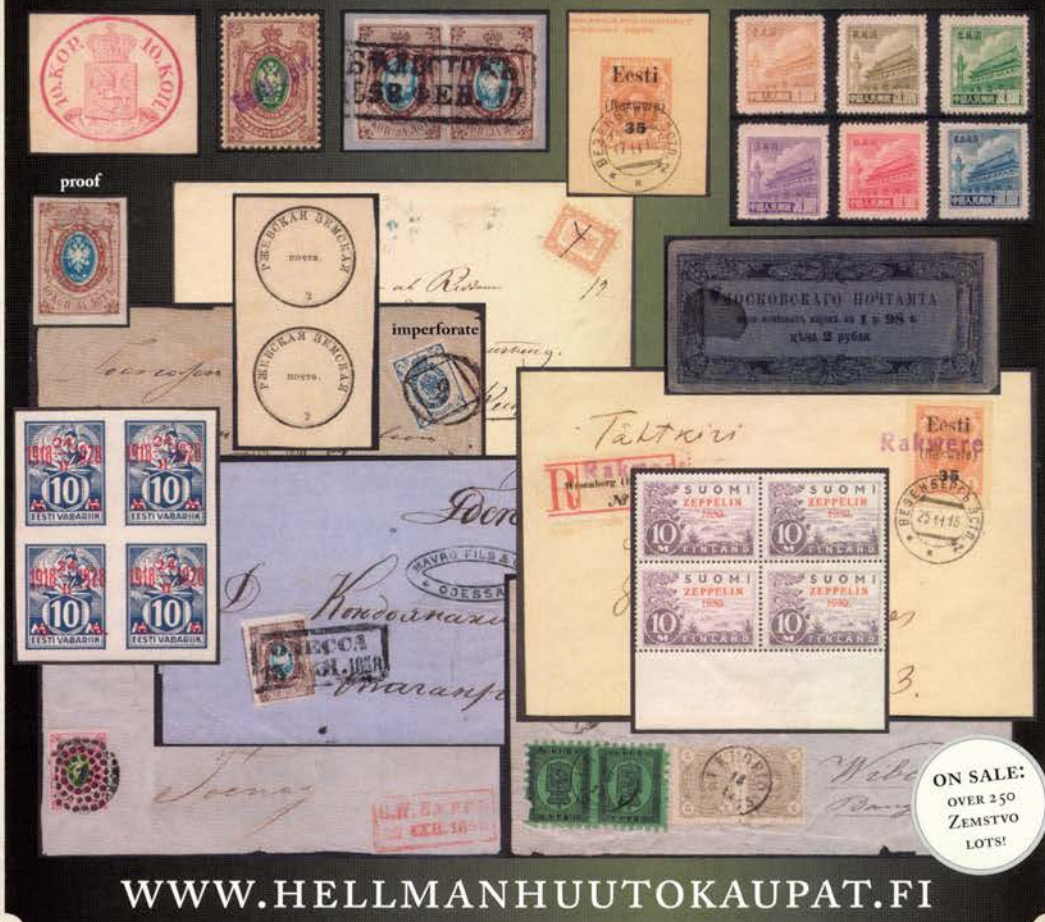


▲ Lot 1552, a rare half sheet of 4 Sk. stamps from plate IIa.

Kjell Germeten A/S, Elisenberg, Nov. 28-29, 2014

The 86th auction comprised some 1,000 Norwegian auction lots. A complete plating of the 4 sk. Arms issue 1855 (NK1), 200 positions and all with grid-cancellations, Lot 1326, sold for \$18,700, just above the estimate. A 10-øre shaded posthorn (NK36) in mint never hinged condition (said to be the finest known of all MNH) sold for more than double the estimate at \$7,800, for \$18,000 (Lot 1494). ■

WWW.HELLMANHUUTOKAUPAT.FI



WWW.HELLMANHUUTOKAUPAT.FI

Welcome to join our

PUBLIC AUCTION ON MARCH 20-21ND

at Hotel Crowne Plaza, Helsinki.

*Finland, Scandinavia, Russia, Balticum and many other
interesting items from all over the world!*

HELLMAN AUCTIONS LTD



OY HELLMAN – HUUTOKAUPAT

PL 5, 20251 TURKU, FINLAND

TEL. +358 (0)40 7281367, +358 (0)45 2328585

WWW.HELLMANHUUTOKAUPAT.FI



A “Destroyed Stolen Cover” Recovered!

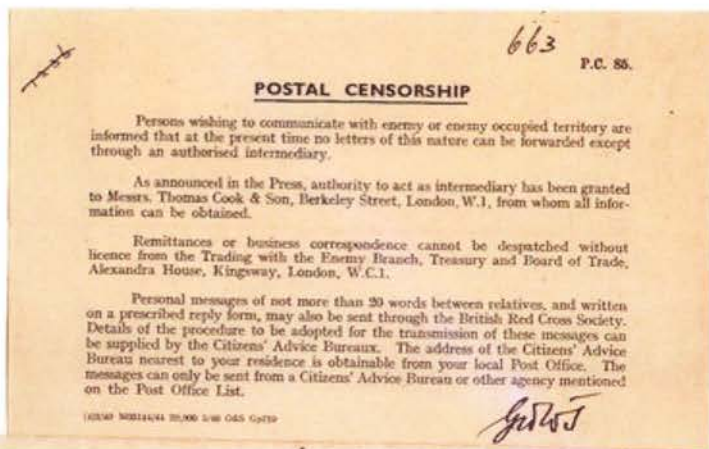
Some additional notes on the consequences German Censor returned mail

Ed Fraser

In the November 2011 Posthorn, pages 6-7, a Danish cover addressed to Box 506, Lisbon, is shown along with its contents – the original letter, and a warning notice from the German censor. Sadly, it was also noted that an overseas postal employee had stolen a bunch of registered mail that was determined to have included this cover inside one of the stolen envelopes. The employee was caught, but described to police that all he sought was currency, and anything else was immediately trashed. Now, it turns out he was not telling the truth, and the cover was apparently sold to a local stamp dealer. As it then happened, a traveling APS dealer chanced on visiting that local dealer, and unknowingly bought this interesting stolen cover and contents – still 100% intact! This item was then among the items this dealer brought to the August 2012 show in Sacramento, Calif., and was for sale at his booth. It was quite by chance spotted by the original dealer, who bought the cover and sent it to me. A most odd sequence of events, with a surprisingly positive postal history outcome. The ultimate serendipity, all in about only 12 months of elapsed time! The recovered cover is shown below in Figure 6.

The Censorship during WWII

Beginning in January 1940, apparently, the British Censors began using Postal Censor form 85, better



described as P.C. 85. This form was inserted into both mail from England that the censor stopped and would return to people attempting to send a letter to a country at war with England, or mail that came to the censor from an enemy country for an address in England that would be delivered – but could not under British rules be replied to. These slips advised to use either the Thomas Cook mail scheme or the Red Cross message scheme, as they were the only choices available to write to an enemy country or enemy-occupied country. These P.C. 85 forms went through regular modification, and 10 different examples are shown

▲ Figure 1. A P.C. 85 censor form, dated May 1940, from a British cover dated July 13, 1940.

in the interesting censor form reference book, *British Empire Civil Censorship Devices – WWII United Kingdom Volume 2*, by Konrad Morenweiser – 4th Edition, c. 2011, pages 42-50, published by the Civil Censorship Study Group.

This wide publicity, of course, encouraged use of the Thomas Cook scheme, which after July 1940 used the Portuguese neutral country address of Box 506, Lisbon. However, we also know that in April 1940, unlike their World War I tolerance of various civilian message schemes via neutral countries, the Germans passed quite strict laws against use of any such scheme. The application and the effects of these laws were, of course, not easily known outside Nazi Europe. Mail that a German censor returned with a warning notice stayed within the area they controlled – and it would not ever be included within mail passing onward out of Nazi Europe. (Similarly, both U.S. and British censor notices included in mail often incorporated the words “this form is not to be mailed out of the country.”) However, mistakes happen, and the German

notices with the typical warning shown in Figure 2 did sometimes wind up in mail accidentally passed onward out of Germany. Also, there is speculation – probably well founded – that when people in Czechoslovakia, Denmark, Holland, Norway and other countries received these warning slips in mail returned to them, they passed some of the slips onward to their local underground resistance, and from there this information was secretly passed along to England.

The text advises that “Any communications with an enemy country is punishable.” Also it advises that letters to an acquaintance or a letter forwarder (Postbox etc.) sent to a neutral country (such as Spain or Portugal) with the intention of the letter being forwarded to an enemy country, is also punishable. A correspondence with relatives in enemy countries can only be carried out through the “German Red Cross, Berlin SW 61, Blücherplatz 2.”

As described in *The Posthorn* of Nov 2009 (Pages 3-11),

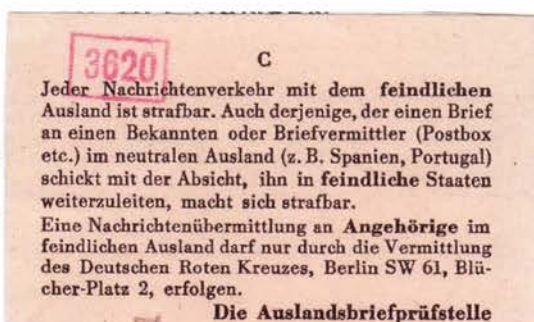


▲ Figure 3. These notices all followed German laws placed into effect April 2, 1940.

information about any of the detail involving handling of this Thomas Cook mail. More detail on the different German censor notices, handstamps, etc., can be found in Horst Landsmann’s book, *Die Zensur von Zivilpost in Deutschland im 2. Weltkrieg*, [in German], available since 2008 in book or CD form.

When the information in the censor slip shown in Figure 5 reached the Norwegian community in England, the Aug. 12, 1942, notice shown in Figure 4 followed. It states that the case has been inquired into by the (Norwegian) Security Office and after consultations the Foreign Office will advise (Norwegian) people staying in countries at war (with Germany) or doing service in the forces, against sending letters to Norway through the Letter Office (P.O. Box 506) as there is reason to believe that this can create serious danger for the addressees.

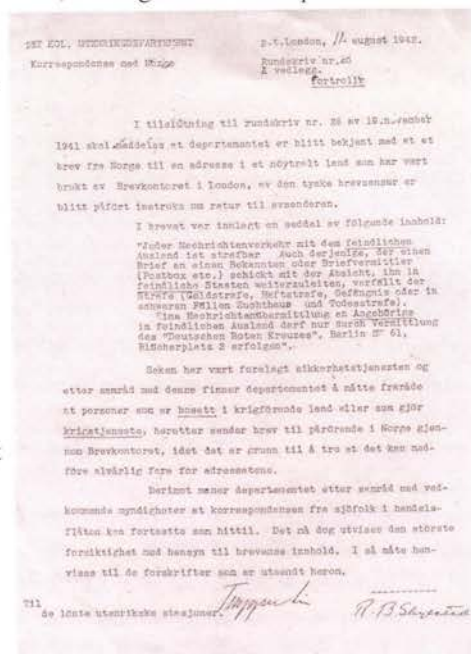
► Figure 4. The Aug. 12, 1942, notice issued by the Norwegian Security Office referencing a German censor slip – apparently exactly like the one shown in Figure 5. Based on that, the notice advises the writer to not use the Thomas Cook service.



▲ Figure 2. Censor’s warning notice enclosed in the Figure 6 cover returned to Danish writer. This German censor slip is described as DZ 3.5 of Munich by Horst Landsmann.

in an article about the Thomas Cook link between Nazi Europe and Canada, the text on a German censor handstamp reads: “Return to sender! Mail to enemy countries - even via a neutral country - is forbidden. This is according to an order re: Information Transmission, dated 2 April 1940. In the event of a repetition, a report will be made regarding this violation. The censorship office.”

The laws allowed for serious punishment, including even being considered an act of treason, although there is no specific



Jeder Nachrichtenverkehr mit dem feindlichen Ausland ist strafbar, Auch derjenig ,der einen Brief an einen Bekannten oder Briefvermittler (Postbox etc.) schiekt mit der Absicht, ihn in feindliche Staaten weiterzuleiten, verfällt der Strafe (Geldstrafe, Haftstrafe, Gefängnis oder in schweren Fällen Zuchthaus und Todesstrafe). Eine Nachrichtenvermittlung an Angehörige im feindlichen Ausland darf nur durch Vermittlung des "Deutschen Roten Kreuzes" in Berlin SW 61, Blücherplatz 2 erfolgen.

◀ **Figure 5. The German censor slip of Munich, described by Horst Landsmann as DZ 6.2.**

On the other hand, the Foreign Office will permit (an exception for) the seamen of the merchant navy to continue the Letter Office service - but the highest caution must be taken with the contents of the letters.

This circular letter was signed by the Minister of Foreign Affairs, Mr. Trygve Lie. This is a name you may recognize. Later he was the first Secretary General of the United Nations. [This notice and related information was graciously provided by Egil H. Thomassen in Norway.]

Did this Norwegian notice significantly reduce the amount of Thomas Cook mail to Norway after Aug. 12, 1942? We don't know!

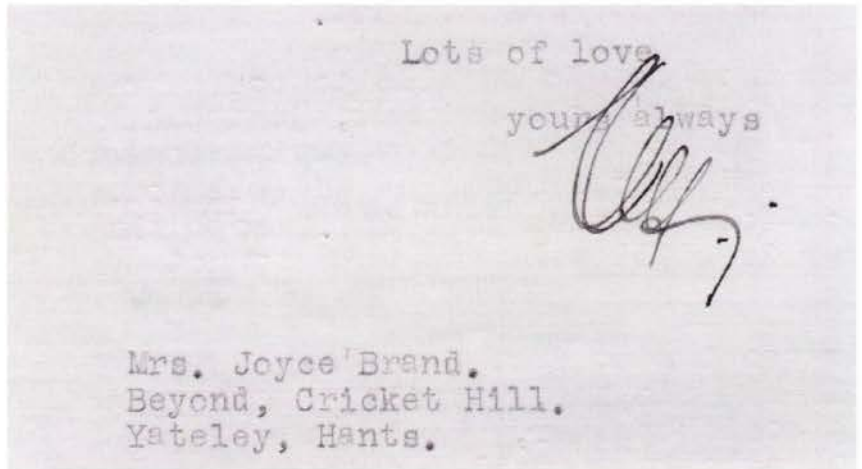
Egil Thomassen also provided a copy of a page of the Norwegian Letter Office's earlier instructions, printed in Norwegian and distributed in England, which gave Thomas Cook's exact instructions for using the Cook service for writing to Norway, but doing it through the Norwegian Letter Office.

Similar to the Norwegian Figure 4 memo, other warning notices involving



▲ **Figure 6 – Front and back of recovered “ZURÜCK” cover, canceled København Nov. 22, 1942. Also has German handstamp reading “Reasons Enclosed.”**

other countries also have appeared in England. Without the benefit of a Danish memo, the booklet, *Undercover Addresses of WWII – 3rd Edition*, by Charles Entwistle – c. 2006, states on page 11 that by the beginning of 1943, the Danish Red Cross was warning correspondents that the German authorities no longer tolerated the use of P.O. Box addresses such as Box 506, Lisbon. (I have some concern about this notice if only because the Red Cross in some places [such as Canada] did look upon Thomas Cook as an illegal competitor, but that well may have not been the case at all with the Danish Red Cross.)



▲ **Figure 7. A cropped portion of the letter from a cover addressed to 506 Lisbon. The letter should not have included an address in England!**

Additionally, on page 11 it also describes a letter of March 19, 1942, from the Czechoslovak Legation in London to Anthony Eden (British Secretary of State for Foreign Affairs) that states “Inhabitants of German-occupied Czechoslovakia who answered communications received from Messrs. Thomas Cook in London have been threatened penal prosecution by the German authorities if they continued to send communications abroad through neutral channels. The threat is contained in official slips....” [However, from what I have seen, Box 506, Lisbon mail from Czechoslovakia is not that unusual even through 1943 and 1944.]

There are additional references involving other countries. In Holland, for example, one says that in May 1942 the Dutch Army and Air Force Units in England were advised that the use of Thomas Cook as intermediary was prohibited.

Epilogue

These German censor warning slips are scarce. The memos about WWII usage of the Thomas Cook Message Scheme are stored away in old records and archives, and not well recorded for philatelists to find. Covers showing rejection by German censorship are scarce, too – so it is a hard topic to fully understand. The Danish cover shown in Figure 6 is interesting in that the original contents have survived with it, and those contents suggest strongly that the Danish writer – writing in English – rather blatantly challenges German censorship by including the “Box 506, Lisbon” addressee’s address in England in closing the letter. See Figure 7. Without that letter, we couldn’t guess that perhaps it was that mistake that flagged the censor’s attention, and likely got the letter returned. ■

The author collects WWII undercover mail, especially those items related to the Thomas Cook Message Scheme. Comments, questions, and additional information welcome. Ed Fraser, 195 Marine Street, Farmingdale NY 11735, or email: edfraser@gmail.com.

Online SCC Member Directory @ www.scc-online.org
A great member service!



Join SCC's Group Ground Package Tour to Stockholm/NORDIA 2015



Postal Museum and Restaurant Treskillingen



October 27 – Arrive at Stockholm/Arlanda. Ground transport to Scandic Hotell Täby. SCC orientation meeting in evening.

October 28 – Travel via group chaperoned public transportation to the *Postal Museum*. Tour followed by *80th Anniversary Luncheon at Restaurant Treskillingen* including invited Swedish guests. Optional Gamla Stan walking tour. Return to Scandic Hotell Täby via public transportation.

October 29 – Travel via group chaperoned public transportation to *Vasa Museum* and *Swedish History Museum* for visits. Optional return to Postal Museum. Possible supper at Ulla Winbladh restaurant. Return to Scandic Hotell Täby via public transportation.

October 30 – *NORDIA 2015* at Best Western Täby Conference Center. Free shuttle from Scandic Hotell Täby. Optional museum or other tour.

October 31 – *NORDIA 2015* at Best Western Täby Conference Center. Free shuttle from Scandic Hotell Täby. Optional museum or other tour. *NORDIA Banquet* in evening.

November 1 – *NORDIA 2015* at Best Western Täby Conference Center. Free shuttle from Scandic Täby. Optional tour to Täby Church or other.

November 2 – Ground transportation to Arlanda. Return to USA.

The package includes:

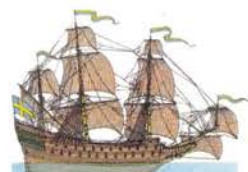
- 6 nights double occupancy at Scandic Hotell Täby including morning breakfasts
- The Stockholm Card - Includes all public transportation and museum admissions plus other discounts
- Ticket to 80th Anniversary SCC Luncheon at Restaurant Treskillingen
- Ticket to NORDIA Exhibition Banquet

Not included:

- Travel to/from Stockholm.
- Transfers to/from airport (ca. \$20 cash each way)
- Meals other than hotel breakfasts and special luncheon and banquet above.



Täby Church and Vasa Museum



NYA VASAMUSEET
FÖRSTADAGSBREV - FIRST DAY COVER
PÅ 1987



Total Ground Package Cost
\$800.00

Additional single occupancy
\$350.00

Further info:

Steve Lund, Scandinavian
Collectors Club, Box 16213,
St. Paul, MN 55116
e-mail: steve88h@aol.com



Tabellarius 2014

Tabellarius 2014, ed. Soile Siltala. 164 pages, 6 ¾ by 9 ¾ inches, card covers, perfect bound, in Finnish with Swedish summaries, Postmuseum, Tampere, Finland 2014. ISBN 978-952-5249-30-9, Friends of the Postmuseum, Häkiläpolku 331 00 Tampere, Finland, approx. €25.

The Friends of the Finnish Postmuseum are similar to the Friends of Sweden's Postmuseum, and one of the rewards of the members' support is the annual book, *Tabellarius*, in Finland or *Postryttaren* in Sweden. Both organizations publish their annual monographs in their native language, although in the case of Finland a brief summary of each article is presented in Swedish. Still these are obstacles to English-only readers.

Maarit Leskelä-Kärki discusses the importance of letters in revealing biographical details of people like the author Helmi Krohn and the composer Erkki Melartin. Juha Valtonen describes the repression in Finland in the early 1900s and shows a number of covers bearing the so-called mourning stamp. Olli-Pekka Mikkola continues the story of the repressive period showing many examples of postcards and stationery depicting the coat of arms and flags.

Klaus Juvas illustrates many of Finland's stamps featuring authors, composers, and artists. Other articles point up the importance of letters of prominent Finnish cultural figures and how the correspondence sheds light on their lives. Jarmo Jähi illustrates many picture postcards with a music theme—performers, concert halls, music and lyrics of popular songs, outdoor concerts, and even cartoons.

Pertti Leppänen recounts the history of the Posthorn and related instruments like the bugle. A group of five co-authors writes about postal music ensembles like the postmen's marching band and the more recent brass septet. The book ends with a review of the accomplishments of the museum and its staff during the year 2013 and the important support of the Friends of the Postmuseum.

— Alan Warren

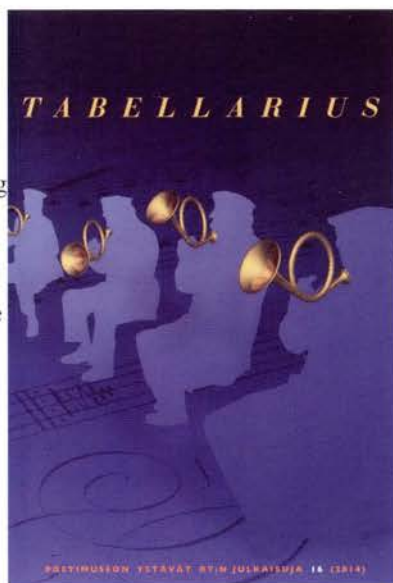
Norgeskatalogen Postal II

Norgeskatalogen Postal II by the Catalog Committee of the Oslo Filatelistklubb (OFK). 320 pages, 6 ¾ by 9 ½ inches, perfect bound, card covers, mostly Norwegian language with some English, Oslo Filatelistklubb, Oslo, Norway, 2014. ISBN 978-82-997618-9-5, 350 Nkr (approx. \$50 plus shipping), OFK, Frydenlundgate 14, 0169 Oslo, Norway..

In 2011 The Oslo Philatelist Club published a supplemental volume with its annual specialized catalog of Norway, focusing on postal history. This approach is very similar to the longstanding practice of Sweden's *Facit Postal* catalog that is published every few years in addition to the annual *Facit Special*.

The introductory section is bilingual in Norwegian and English. However, subsequent discussions on the different types of cancellations appear in Norwegian only. The introduction defines the different types of cancels, describes quality considerations, indicates the problem of forgeries, provides a 3-language word list (Norwegian, English, German) and offers a list of literature references.

Then follow the major types of postmarks in more or less chronological order: prestamp marks 1845-1855, early single ring marks, 3-ring numeral cancels, manuscript cancellations, the double-ring marks of 1860-1931, 3-ring marks used after 1883, Swiss marks (largely bridge type) from 1889 to 1930, the Swiss





marks of 1930-1936, and the crown and posthorn types. For the earlier marks, tables show the value according to the stamp issues on which they occur. The Swiss markings sections have been greatly expanded since the 2011 edition of the catalog, based on data furnished by collectors.

The Post i Butikk or letter post offices are listed from 2001 to date with location and postal codes, and with opening and, in many cases, closing dates. The letter listing (brevregister) for the period 1855-1909 by stamp issue and destination has been updated, as well as the tables of postal rates that now go up to 2014.

One important chapter that is missing in this edition is the backward listing of place name cancels that appeared in the 2011 edition. This enables one to identify a postmark if only the last few letters of the town or city is on the stamp. The catalog committee decided against running that listing again for space considerations. That means one has to have both editions in order to be up to date and also have the capability of searching for these incomplete marks. Perhaps OFK could place this list on its web site if it is not going to make it available in future editions.

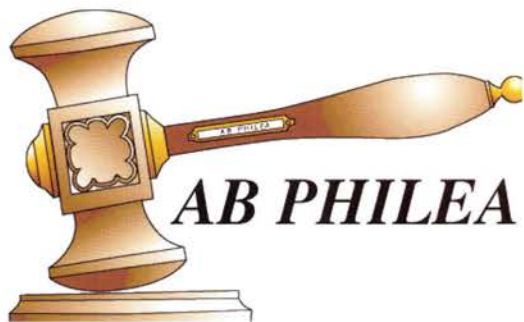
Another omission in the 2014 edition is the listing of labels or etiquettes like the registered mail labels. This is bothersome for those who collect these items but cannot be assured they will be in every edition of NK Postal. Despite these obstacles the postal history catalog is needed for understanding how the postage stamps were used. As many collectors and exhibitors have moved on from traditional philately to postal history, this catalog is increasingly important. ■

— Alan Warren

SCC Chapter Meetings & Contacts

1. SEATTLE/NW: 2nd Monday, 9 a.m. at members' homes. CONTACT: Dana S. Nielsen, 13110 NE 177th Place, PMB #263, Woodinville WA 98072-5740. email: dananielsen@comcast.net.
 4. CHICAGO: 4th Thursday of January-June and September, October; 1st Thursday of December, Des Plaines Public Library, 1501 Ellinwood St., Des Plaines IL 60016. CONTACT: Ron Collin, PO Box 63, River Grove IL 60171-0063; (773) 907-8633, phone: (312) 259-1094, email: collinr@ameritech.net.
 7. NEW YORK: second Wednesday of February, April, June, September and November at The Collectors Club, 26 E 35th St, NYC. CONTACT: Carl Probst, 71 Willoughby Ave, Hicksville NY 11801, email: cwp1941@aol.com.
 9. NORTH NEW JERSEY: 3rd Wednesday at members' homes. CONTACT: Warren J. Grosjean, 32 Juniper Rd., Wayne NJ 07470-6156, email: warren@Derma-Safe.com.
 14. TWIN CITIES: 2nd Thursday (except July and August), 7 p.m. at Danish American Center, 3030 W River Parkway S, Minneapolis MN 55406. CONTACT: Steve Lund, 383 Grand Ave Apt. 5, St. Paul MN 55102; (651) 224-3122; email: steve88h@aol.com.
 17. SOUTHERN CALIFORNIA: 1st Wednesday at members' homes. CONTACT: Jerry Winerman (818) 784-7277, or email: gerjerry@sbcglobal.net.
 21. GOLDEN GATE: 1st Saturday, 11 a.m., at members' homes and at various shows (WESTPEX, PENPEX, etc.). CONTACT: Herb Volin, (510) 522-3242, email: HRVolin@aol.com.
 24. MANITOBA: 2nd & 4th Wednesdays September through May at Scandinavian Cultural Centre, 764 Erin St., Winnipeg, MB. CONTACT: Robert Zacharias, 808 Polson Ave., Winnipeg, MB R2X 1M5, Canada, email: robertzacharias@shaw.ca, Website: <http://members.shaw.ca/sccanitoba>.
 27. COLORADO: 1st Saturday September-June, 10 a.m., at the Rocky Mountain Philatelic Library, 2038 S. Pontiac Way, Denver CO 80224. CONTACT: Roger Cichorz, 3925 Longwood Ave., Boulder, CO 80305-7233, email: rcichorz@comcast.net.
- AUSTRALIA COORDINATOR: John McKay, email: john.mckay@analysisinternational.net.au
 NEW ZEALAND COORDINATOR: John Campbell, email: johncampbellnz@hotmail.com.

*Welcome to the largest
auction house in Sweden for
philately and numismatics!*



6 PUBLIC AUCTIONS EVERY YEAR,
WITH 2,500-4,500 LOTS IN EACH ONE.

All auctions are professionally presented in catalogues and on our homepage – www.philea.se – the most visited philatelic site in Northern Europe.

Our emphasis is on Scandinavia, but we also offer material from all over the world.

The following auction companies are now part of the Philea-group.

- Lars Tore Eriksson Frimärksauktioner
- Frimärkskompaniet AB
- Kihlströms Frimärkshandel AB
- Göteborgs Frimärkslager
- NOVA

**Contact
Us!**

AB PHILEA • Svartensgatan 6 • SE-116 20 Stockholm • Sweden
Phone: +46 8 640 0978 • Fax: +46 8 643 22 38 • E-mail: mail@philea.se

The Scandinavian Collectors Club

Founded Nov. 25, 1935

SCC Website: www.scc-online.org

Elected Officers

President: Steve Lund, PO Box 16213, St. Paul MN 55116; steve88h@aol.com

Vice President: Christopher Dahle, 1401 Linmar Dr NE, Cedar Rapids IA 52402-3724;
chris-dahle@fastermac.net

Vice President, Chapters: Randy Tuuri, 29 Cambridge Way, Piedmont CA 94611; tuurifam@comcast.net

Secretary: Alan Warren, PO Box 39, Exton PA 19341-0039; alanwar@att.net

Treasurer: Kauko Aro, 325 Riverwood Rd., Mooresville NC 28117; kiaro@roadrunner.com

Immediate Past President: Mats Roing, 89 Summit Way, Apt 2, Gardiner MT 59030-9314;
mr22841@gmail.com

Directors: Matt Kewriga, Schuyler Rumsey, 47 Kearny St 500, San Francisco CA 94108; matt@kewriga.com

Roger Cichorz, 3925 Longwood Ave, Boulder CO 80305-7233; rcichorz@comcast.net

John Salmi, jsalmi5@shaw.ca

Jerry F. Eggleston, PO Box 829, Breckenridge CO 80424; jerryeggleston@comcast.net

Vigo Warmboe, 2740 Foxgate Dr, Minnetonka MN 55305; vigo62@comcast.net

George Kuhhorn, PO box 4486, Emerald Isle NC 28594; geostamps@hotmail.com

Appointed Officers

Executive Secretary: Steve Lund, PO Box 16213, St. Paul MN 55116; steve88h@aol.com

Library Committee: Paul Albright, Howard Benson, Roger Cichorz, Greg Frantz, Jim Kilbane.

Contact: SCC Library, c/o RMPL, 2038 South Pontiac Way, Denver CO 80224;

palbright@wiche.edu

Membership Chairman: George A. Kuhhorn, PO Box 4486, Emerald Isle NC 28594;

geostamps@hotmail.com

Exhibition Coordinator: Matt Kewriga, Schuyler Rumsey, 47 Kearny St 500, San Francisco CA 94108;

matt@kewriga.com

Stamp Mart Manager: Viggo Warmboe, 2740 Foxgate Dr, Minnetonka MN 55305

vigo62@comcast.net

Canadian Mart Manager: Roger Fontaine, 9 Rochester Ave, Winnipeg, MB, R3T 3V6, Canada;

stampman9@gmail.com

APS Representative: Steve Lund, PO Box 16213, St. Paul MN 55116; steve88h@aol.com

Literature Promotion: Alan Warren, PO Box 39, Exton PA 19341-0039; alanwar@att.net

Publicity Chairman: Vacant

Website Coordinator: Christopher Dahle, 1401 Linmar Dr NE, Cedar Rapids IA 52402-3724; chris-dahle@fastermac.net

Historian: Roberta Palen, PO Box 364, Forbes MN 55738; toivossa@hotmail.com

Awards Chairman: Vacant

SCC Study Groups

DWI: Arnold Sorensen, 7666 Edgedale Drive, Newburgh IN 47630-3062; valbydwi@hotmail.com

Sweden Ring: George A. Kuhhorn, PO Box 4486, Emerald Isle NC 28594; geostamps@hotmail.com

Finnish Study Group: Vacant

Danish Wavy Line: Donald B. Brent, PO Box 13196, El Cajon CA 92022; dbrent47@sprynet.com

Scandinavian Revenues: Paul Nelson, Tucson, Ariz.; pnel1@comcast.net



Membership renewal is in its final stages. An increasing number of renewals now occur via the internet and PayPal. However, many members do not respond to emails sent to the addresses they provided resulting in additional USPS mailed hard copy invoices. Please set your mail program to accept emails with SCC in the title. Membership statistics are shown below. ■

Membership Statistics for the Fourth Quarter, 2014 (Nov. 1-Jan. 31)

New Members

4264 Muhonen, Ari, Hallainvuorentie 16 B 3, FI-00920 Helsinki, Finland

Change of Address

PH13 Danmarks Filatelist Forbund, Priorparken 860, DK-2605 Brøndby, Danmark

2238 Gudmestad, Ove t, Risnesveien 3, N-4056 Tanager, Norway

4263 Lalla, John, 4082 South Redwood Dr, Springfield OR 97478

1702 Larsen, James, 2163 Banff Ct, Sierra Vista AZ 85635

Deceased

3890 Lawrence, John

724GL Lind, Arthur L.

3279 Markmann, Knud

L85/202 Palme, Robert

1354 von Stokirch, Hans

Resigned in good standing

2272 Bristow, Mercer

4205 Ericson, Jack T.

3901 Garside, Barbara

3372 Killsgaard, Jens

1683 Larson, Paul A.

2056 Piercey, David

2863 Samuelson, Donna

Recent Donations to SCC or Recent Donations to SCC or the Library

(cash or library materials)

4048 Lars Engelbrecht

1372 John Christensem

3242 Gordon Morison

3497 Frank Martin

4144 Ernest Rimerman

3971 Paul Negline

3743 Henrik Rossell

4110 Sam Partain

1338 Kauko Aro

3739 David Kreshek

3820 Henry Hanson

1049 Alfred Gruber

3488 Donald Kurki



Scandinavia

The Scandinavian Specialist since 1973

- Building fine collections for exhibition, research, and enjoyment. Offering approvals from your specific want list or a description of your specialized interests.
- Complete private treaty services for your Scandinavian material.
- Active buyer of complete collections or individual items. High prices paid. Avoid the delays and uncertainty of auctions. I have many customers for your good material.
- Providing over 400 titles of philatelic literature and catalogs for the Scandinavian collector.

Call toll-free 1-800-44-STAMP (1-800-447-8267)

Phone: 336-376-9991 Fax: 336-376-6750

email: js@JaySmith.com www.JaySmith.com

Jay Smith

P.O. Box 650-SCC Snow Camp, NC 27349 USA

Chapter Reports

Randy Tuuri, Vice President, Chapters



Chapter 13 – Delaware

The November meeting was devoted to a show-and-tell, where members learned about recent stamps issues of Denmark depicting the royal family and heard a report on the Nordia show held in Norway. The usual post-holiday luncheon with spouses took place in early January.

The decision was made to dissolve the chapter as there were too few members left to make it viable. Sadly, this is the last chapter report.

Chapter 9 – North New Jersey

Meetings continue on the third Wednesday each month, now held in the afternoon. The Christmas party continues, with Norwegian fare and camaraderie. Weather moved the January meeting to a Friday and SCC and APS books were reviewed. Also, various discussions including exhibiting were featured.

Chapter 7 – New York

The most recent meeting featured Mart books and lots of stories.

Chapter 4 – Chicago

The chapter has had discussions on the Danish Skilling issues with emphasis on printings, maps, Norway covers and general show-and-tell sessions, as well as SCC and APS books at all of the meetings.

Chapter 1 – Seattle

The chapter perused circuit books in October, studied Norway and Sweden in November and a member's Christmas Seal collection was shown in December.

Chapter 17 – Southern California

Normal meetings continue.

Chapter 21 – Golden Gate

A holiday get together was held in early January and a good time was had by all. Normal meetings will resume in February.

Chapter 24 – Manitoba

The October meeting was the annual general meeting, which was followed by a show-and-tell of many items. November featured a presentation on "Squared Circle Cancels of Canada," and December was the annual Christmas dinner.

Chapter 14 – Twin Cities

December was the annual Julfest and in January a report on Nordia 2014 was presented.

Chapter 27 – Colorado

November's meeting was a member's auction, and December featured the club's annual holiday dinner. January's meeting was presentation on "Classic Iceland Stamps (1873-1902)," as well as a show-and-tell session. ■

Online SCC Member Directory

@ www.scc-online.org A great member service!

Transfers and Re-Entries

By Alan Warren

Recent elections in the **Icelandic Federation, Landssamband íslenskra frímerkjasafnara (LIF)**, resulted in **Gísli Geir Harðarson**, chairman; **Árni Gústafsson**, vice chairman; **Kjartan Kárason**, secretary; and **Gunnar Rafn Einarsson**, treasurer.

Collectors of the work of the famous Swedish engraver Czeslaw Slania will be saddened to learn that **Gene Wolosiewicz** died Oct. 26, 2014, at age 78 after a long illness. Gene was former president of the **Czeslaw Slania Study Group** and editor of its newsletter, *Close-Up*. SCC past president **Roger Quinby** was elected a Fellow of the **Royal Philatelic Society London**.

A recent recipient of the **Danske Filatelisters Fællesfond** scholarship is **Otto Kjærgaard**, editor of the postal history society journal, *Posthistorisk Tidsskrift*. **David Kindley** was the featured speaker at the **Royal Philatelic Society London** in November where he discussed mail to and from Iceland during the presence of British and American forces in World War II.

The **Federation of European Philatelic Associations (FEPA)** recently presented its merit award for service to **Gunnar Dahlvig** of Sweden. Commissioners to **Malaysia 2014** held in December in Kuala Lumpur included **Jørgen Jørgensen** of Denmark and **Bengt Bengtsson** of Sweden. Bengtsson also served as president of the FIP jury at the show.

Denmark's **Jørgen Jørgensen** is the 36th recipient of the prestigious **Copenhagen's Philatelist Club (KPK)** medal. He was recognized for his many years of service in the **Danish Philatelic Federation**, as a national and international judge, as president of the **Federation of European Philatelic Associations (FEPA)**, his authorship and editing achievements and his large gold medal exhibits in thematic and postal history classes.

It is believed that the venerable firm of **Frimerkehuset A-S** in Norway is being merged into the **Skafil** operation. Details are still sketchy at press time but the Bergen headquarters will continue with **Caspar Moldenhauer** running the firm's auctions. **Bergens Mynt** is also a part of the new business merger.

May 13-16 are the dates of the **London 2015 Europhilex** international exhibition to be held in the city's Business Design Centre. **Jonas Hällström** of Sweden will be secretary to the jury. Also serving on the panel are **Per Friis Mortensen** of Denmark, **Jussi Tuori** of Finland, **Ivar Sundsbø** of Norway and **Fredrik Ydell** of Sweden. Apprentice jurors include **Jukka Mäkinen** and **Ari Muhonen** of Finland. Denmark's **Lars Peter Svendsen** serves on the expert team. ■

Scandinavian Area Awards

Awards from several recent shows at home and abroad

At **Filatelic Fiesta** in San Jose, Calif., in November, **Paul Clemmensen** won a vermeil and an AAPE award of honor for *Holbøll's Danish Christmas Seals*. In the single-frame category, he received another vermeil for *Denmark's Third Issue: 2 Skilling*. In the literature competition at **Chicagopex** in November, *The Posthorn* won a gold, and in the philatelic exhibits **Dickson Preston** received a gold also for *U.S. Army Post Offices in Greenland 1941-1945*.

Ray Todd won a gold with special prize for his *Sweden Postal Stationery 1872-189* at the **Baypex** show held in Taradale in the Hawke's Bay region of New Zealand in November. **David Loe** received a large vermeil for *Icelandic Postal Rates 1870-1955*, and **Jon Radeby** took another large vermeil with his *Norway Posthorn Issues 1886-1893* at the same show. ■

– Alan Warren

Scandinavian Literature Notes

By Alan Warren



News from Denmark



Lasse Nielsen provides details on the printings and plate flaws of the 16-skilling issues of 1857 and 1863 in the November 2014 *Nordisk Filatelistisk Tidsskrift*. Tony Gade illustrates quite a few covers sent from the Danish West Indies to other destinations during 1916-18 that were censored. Petter J. Taraldsen continues his series on Aalborg postal history in the December *Posthistorisk Tidsskrift* with a study of the period January 1870 to January 1875. The discussion includes postal routes and different classes of service.

Hans Schønning presents an overview of Denmark's first and most famous postage stamp, the Fire R.B.S. (4 Rigsbank Skilling) in the December 2014 *Dansk Filatelistisk Tidsskrift*. Ib Krarup Rasmussen, editor of *DFT* and business manager of the Danish Philatelic Federation, explains the operation of the Federation's online sales program and provides a user's manual.

News from Germany



Dirk Pestlin describes an unusual marking on parcel cards and envelopes of Denmark during the 1918-21 period in the November 2014 *Philatelistische Nachrichten*. The abbreviation is "Afs. F.," and is either handwritten or rubberstamped near the postage. It stands for "Afsenderens Frankering," meaning that the stamps were applied by the sender. Cyril Schwenson continues his series on the Finland Grand Duchy private letter sheets 1850-55.

Rolf Dörnbach describes the postal station of Ikamiut in Greenland, and shows the bridge type cancel used there from 1960 to 1989, and the single-ring CDS introduced in 1990. Dörnbach also presents a table listing the lighthouses of Iceland and their locations. Many of the lighthouses are depicted on the stamps of that country. In the same issue of *PN*, Manfred Schäfer discusses the identification of Norwegian Posthorn stamps that are derived from booklets in the 1898-1919 period.

News from Great Britain



In the November issue of 238, the journal of the Faroe Islands Study Circle, David Quayle reports information he found in old issues of the Klaksvík area newspaper, *Nordlýsi*, during the period 1915-20. This includes post office and hours, postal rates, steamer service, a timetable for the ship Smiril and various problems with the mails in that period.

Rolf Dörnbach describes the island of Mykines and provides statistics about it and the postal service on the island. Peter Sondhelm illustrates a cover sent from England to Sandevaag in October 1914. It bears two British censor resealing tapes and a transit mark of Copenhagen.

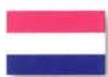
David Macdonald continues his series on the private ferry stamps of Denmark in the December 2014 *Scandinavian Contact*. In the same issue, David Loe and Brian Flack mark the closing of the post office at Iceland's Hrísey island in 2014. They show a number of mail items to and from the island and some of the cancelers used over the years.

News from Iceland



Guðjón Axelsson and Þór Þorsteins discuss the 1944 Republic set of stamps in the issue No. 30 of *Frimerkjablaðið*. They feature the portrait of Jón Sigurdsson and the authors show essays, color trials and die proofs. Eðvard T. Jónsson presents a preview of the stamps that Iceland will issue in 2015. Ólafur Eliásson illustrates some manuscript and handstamp "franco" markings on Iceland covers.

News from the Netherlands



John Kuin discusses the varieties and plating of Greenland's parcel stamps (the polar bears) in the December *Het Noorderlicht*, published by the Scandinavian Collectors group in Holland.

This journal concludes its 2014 issues with a grand (size A4 format) 104-page edition to celebrate 50 years of publication. Frans Claessen and Ton Steenbakkers show unusual postage due uses in Denmark during the period 1921-62. Albert Ruijne discusses Norway's Nordland post office cancels during the skilling period.




In the same issue Henk Fiolet describes literature and history in Finland illustrated with the country's stamps, photographs and prints depicting various authors and political figures. Johan Vroom shows 19th-century use of Denmark's postal stationery envelopes. The jubilee edition ends with John and Rieneke Kuin's article on the 1931 Iceland flight of the *Graf Zeppelin LZ 127*.

News from Norway



The special issue 7/2014 of *Norsk Filatelistisk Tidsskrift* carries an insert that is the 32-page catalog of the Nordia 2014 exhibition held in November in Lillestrøm. The issue also features an interview with Norway Post's CEO Dag Mejdell. He elaborates on the substantially reduced number of stamps printed compared with five years ago and other changes that Norway's mails are undergoing.

In the same issue, Knut Arveng presents a profile of author, aviator and explorer Tryggve Gran. He served on the ski patrol of Scott's fateful trek to the South Pole. Gran then studied flying at Bleriot's school and worked with Britain's RAF during World War I. Later, he lectured on aviation and polar exploration and wrote several books. Knut Glasø contributes the third part in his series on the Norwegian railway freight stamps in the December 2014 issue of *NFF-Varianten*.

| | |
|--|---|
| <p>FRANK BANKE</p>  <p>PHILATELISTS</p> <p>DANISH WEST INDIES</p> <p>FAROE ISLANDS</p> <p>GREENLAND</p> <p>Visit our Webshop www.fbanke.com</p> <p>ICELAND</p> <p>DENMARK</p> <p>SLESVIG-HOLSTEN</p> <p>DANISH EAST INDIA</p> | <p>2 SK. 1870 Bicolored Issue</p> <p>Line Perforation 12½</p> <p>Printed Matter rate</p>   <p>FRANK BANKE PHILATELISTS Mezenlaan 3, 3080 Tervuren, Belgium fbanke@pandora.be · Phone +32 2 767 5376</p> |
|--|---|

Much of issue 8/2014 of *Norsk Filatelistisk Tidsskrift* is devoted to reports and results of the Nordia 2014 exhibition held in Lillestrøm. Svein Holst Andreassen describes the 1931 Louise Boyd expedition to East Greenland and shows a postcard sent from Scoresbysund to the United States. Øyvind Refsnes interviews Erling Daugaard, CEO and owner of the Nordfrim firm that has a customer base of over one million.

In the same issue Erik Lørdahl tells the story of the 17-year-old Norwegian Knut Jensen, who was arrested as a political prisoner by the Germans in 1942. The story is unveiled through family correspondence between Knut and his relatives in Moss, Norway, as he was moved from one concentration camp to another over the next three years: Grini, Sachsenhausen, Lublin and, finally, Auschwitz. He was liberated in 1945 and returned home to Moss at the age of 20 in September that year.

Erik Lørdahl tabulates some 126 pieces of correspondence from a German supply specialist, assigned to duty at locations where he mailed from three different fieldposts in occupied Norway during World War II, in the December issue of *Norwegian War and Fieldpost Journal*. The covers contain the letters he wrote. The table lists the date the letter was written, the date canceled, the fieldpost marking, the type of handstamped seal and the “place” where the letter was written. This last item was marked the North, Norway, on board (ship), or undisclosed location.

News from Sweden



A couple of ongoing series in *Svensk Filatelistisk Tidsskrift* continue with issue 7/2014, with Bo Dahlner’s discussion of the coil stamps of 1920-36 (the 25-öre Gustaf V profile stamps), and Peter Nordin’s description of registered mail labels of Malmö. The same series continue in the 8/2014 issue, with Dahlner discussing the 30-öre Gustaf V profile issue and Nordin calling attention to the classifying of similar types of registration labels as adopted by the *Facit Postal* catalog. In the same issue Mats Ingers discusses new perforation varieties of Sweden’s classic stamps.

News from the United States



Kathleen Wunderly describes Iceland’s 1925 pictorial set of five values in the Jan. 12, 2015, *Linn’s Stamp News*. These were the first stamps of Iceland that did not bear a portrait of a monarch, but instead were based on photographs of buildings and scenes in that country. ■

**Please make it a personal goal
to recruit at least one new SCC member this year.
It helps all of us!**

Erik Hvidberg Hansen



Denmark’s well-known postal stationery collector and exhibitor Erik Hvidberg Hansen died Dec. 22, 2014 at age 72. He had outstanding exhibits of *Denmark’s 1871-90 Single and Double Lettercards* and *Danish Postal Stationery 1865-1920*. He also collected Danish West Indies and Faroe Islands, as well as the postal stationery of Poland and Bulgaria.

Hansen authored numerous articles in the Danish philatelic press on the country’s postal stationery and also two handbooks on the Danish West Indies. He served many years on the board of the Copenhagen Philatelic Club (KPK), as well as two terms as board secretary. An FIP judge, Hansen served on the FIP Postal Stationery Commission and was its secretary 1992-2008. In 2012 he received the Danish Philatelic Federation’s highest honor, the Denmark Medal. ■

— Alan Warren

Roger Cichorz

U.S. Supreme Court Decision is a Victory for Libraries



A decision made on March 19, 2013, by the Supreme Court of the United States in the *Kirtsaeng v. Wiley & Sons, Inc.* represents a complete victory for libraries, especially those such as the SCCL, whose holdings include significant publications manufactured abroad. According to the American Library Association (ALA), the Court's decision eliminates the uncertainty about the permissibility of libraries' importing and circulating materials manufactured abroad and demonstrates the central role of libraries in the American way of life as well as the importance of libraries' engagement in policy debates.

In 2008, John Wiley & Sons, Inc. filed suit against Thailand native Supap Kirtsaeng over the sale of foreign-edition textbooks made outside the United States marked for sale exclusively abroad, which Kirtsaeng imported into the United States. When Kirtsaeng came to America in 1997 to study at Cornell University, he discovered that Wiley textbooks were considerably more expensive to buy in the United States than in his home country. Kirtsaeng asked his relatives in Thailand to buy these books at home and ship them to him to sell, and he subsequently sold the imported books on eBay for a profit. Wiley sued Kirtsaeng for copyright infringement and won in two lower courts. The Second Circuit Court of Appeals upheld the ban on importation of copyrighted works without the authority of the U.S. copyright owner. However, this set up a split with the Third and Ninth Circuit Courts, which had variant approaches to the same question in other cases.

Kirtsaeng then appealed to the Supreme Court, arguing the first-sale doctrine, a clause in the U.S. copyright that enables residents of the United States to resell legally obtained objects without asking for the copyright owner's permission, was more important than the copyright owner's rights to control importation of the owner's works under U.S. Law. The Supreme Court reversed the Second Circuit and held that Kirtsaeng's sale of lawfully-made copies purchased overseas was protected by the first-sale doctrine. In its majority opinion written by Justice Stephen Breyer (joined by five other Justices), the Court held that the first-sale doctrine applies to goods manufactured outside of the United States and the protections and exceptions offered by the Copyright Act of 1976 to works "lawfully made under this title" are not limited by geography. Rather, it applies to all copies legally made anywhere, not just in the United States, in accordance with U.S. copyright law.

Thankfully for libraries in the United States, the Supreme Court got it correct! The Court case ruling could have greatly affected libraries, as the first-sale doctrine allows libraries to lend books and other materials to the public. With this decision, the Court upheld the rights of libraries to loan materials lawfully to their patrons, regardless of where those materials have been manufactured. Justice Breyer mentioned the ALA in his opinion on the case, stating:

"The ALA tells us that library collections contain at least 200 million books published abroad... How, the ALA asks, are the libraries to obtain permission to distribute these millions of books? How can they find, say, the copyright owner of a foreign book, perhaps written decades ago? Are the libraries to stop circulating or distributing or displaying the millions of books in their collections that were printed abroad?"

Free Download Available of an Excellent Article on Iceland's "Parliament" Issues

Renowned philatelist Wolfgang Maassen of Schwalmthal, Germany, publishes on the Internet a digital-version, German-language journal titled *Phila Historica, Zeitschrift für Philateliegeschichte und*

Philatelistische Literatur (Phila Historica, Journal of History of Philately and Philatelic Literature). He encourages all interested parties to access his published information and make personal downloads from his excellent on-line journal free of charge.

The No. 2, June 2014 issue of *Phila Historica* has an in-depth article by Maassen on pages 79-107 titled “Ludwig Hesshaimer: 1000 Jahre Island (1930).” Essentially a monograph on Hesshaimer, the graphic artist who designed Iceland’s 1930 “Parliament” issues and others of that era, this article is profusely illustrated in color with preliminary artist’s drawings, essays, trials and proofs of Hesshaimer-designed Iceland issues, and examples of their use on contemporaneous covers. It is an excellent source of information for the Iceland specialist or collector interested in detailed information on these stamp issues and can be accessed via www.philahistorica.de/Dokumente/PhilaHistorica_2014_02.pdf. For readers who cannot access the Internet, this article, either as a CD or hard copy (loose-leaf pages in a card binder), is available for loan from the SCCL as ICE B82G.

Unfortunately for English-only readers like myself, the “G” suffix on the Iceland book ID number ICE B82G means this article is entirely in German. I am requesting that someone fluent in German who collects Iceland stamps undertake the task of translating this article into English and providing SCCL with a copy of the translated text. Any volunteers? My contact information is given at the end of this column. Incidentally, my thanks go to Alan Warren who brought *Phila Historica* to my attention and kindly provided SCCL with a CD of the contents of Issue No. 2, June 2014.

Follow-ups on Items Mentioned in Previous Columns

A follow-up from my November 2014 column regarding a request for information about Norwegian skilling Posthorn die proofs, artist drawings and essays. I provided N.S. of New York with examples of single large die proofs on card for the 1- through 4-skilling denominations that were offered in several auctions over the years. N.S. answered back that references indicated the original die proofs had two impressions of the same-denominated stamps top and bottom on each card, and questioned whether the single die proofs in these sales were posthumous reprints rather than the actual contemporaneous proofs. After going back to the drawing board, I discovered a complete die proof with two impressions in one of Harry Snarvold’s exhibits. Fortunately, the left-hand side had some line markings that ran from top to bottom. When I revisited illustrations of the single die proofs, the line markings were still present and matched up with either those on the top or bottom. Mystery solved as the original die proofs were simply severed in half horizontally, and two single die proofs resulted from the original two-impression proof!

My August 2014 column dealt with catalogs from Finnish auction firms and, as a result of my plea for missing issues of SPF-affiliated Hellman Auctions Ltd., I am pleased to report that Kaj Hellman, who receives *The Posthorn* and evidently reads my column, kindly provided SCCL with the missing numbers 71, 75 and 81 from 2012-13. Kaj reports that he is now retired from the auction business but remains active as a philatelic consultant and appraiser. He indicated he is pleased with the way SPF has taken charge of and handles the Hellman Auctions Ltd. sales: “*They are doing things right!*”

My August 2014 column also mentioned that some of the Agathon Fabergé Finland Collection was sold in the H. R. Harmer auction conducted Oct. 9-10, 1939, in London, and that catalog is in SCCL’s Exhibits and Collections holdings, assigned ID number E&C 266-1. Ed Fraser corrected me in that this auction was originally scheduled for those October dates, but because of wartime conditions was postponed and actually held in London on March 18-19, 1940. Ed mentioned that the more significant Fabergé Finland material was in this Harmer sale rather than in “The Agathon Fabergé Collection of Finland, 1860-1935” auction, conducted by Carl Pelander Jan. 27, 1940, in New York City. SCCL has both of these auction catalogs available for loan if you want to compare the offerings in both sales.

Mention of Agathon Fabergé brought forth a question by Kaj Hellman, who is doing research on Fabergé. Kaj was under the impression that Fabergé was present – and served in some official capacity – at Tipex ’36 (Third International Philatelic Exhibition in New York City, May 9-17, 1936).

As luck would have it, the RMPL has the Tipex show catalog. I searched through the names of the patrons, jury members, committee members, contributors, advertisers and others who acted in various capacities at the show, and Fabergé's name was conspicuously absent. So, the evidence is such that we can reasonably conclude that he had no official presence there. However, he may have attended the show as a visitor, which could be confirmed if a visitors' log exists somewhere and is available for examination.

My next column will continue with the theme that the SCC Library is Your Approachable Resource and will include a discussion of some "limited research" done on Norway's first postage stamp and its unusual watermark.

I encourage your comments about the content of this column and any questions you have about the SCCL and its operations. Also, your suggestions for future column topics are always welcome. Please do not hesitate to contact me at rcichorz@comcast.net, USPS mail at Roger Cichorz, 3925 Longwood Ave., Boulder CO 80305-7233, USA, or telephone (303) 494-8361. ■

S.C.C. Library Auction #38

(Closing Date April 15, 2015)

This is the 38th auction of items being offered to SCC members. These 51 lots are excess to current SCC Library holdings. Auction realizations will be used to purchase future literature acquisitions for the SCC Library. Place bids with Roger Cichorz, 3925 Longwood Ave., Boulder CO 80305-7233, USA; telephone (303) 494-8361, or email: rcichorz@comcast.net. This auction closes Feb. 1, 2015.

Terms of Sale:

1. The minimum bid accepted for a lot is the starting bid. Wherever possible, the auctioneer's estimated market value (EMV) or actual current market value from dealers' pricelists (CMV) is included in the lot description as a guideline for bidders.
2. The highest (successful) bid will be placed at one bidding increment over the second-place bid. Bidding increments are: \$0.50-\$5 = \$0.50, \$5-\$25 = \$1, \$25-\$50 = \$2, \$50-\$100 = \$3. Bids are in U.S. currency. In instances of tied high bids, the lot sells to the earliest bidder.
3. Mail, telephone or email bids are acceptable. Please include your name, address and telephone number. Email bids will be confirmed by email reply. Telephone bids will be recorded and confirmed at the time they are placed. Bidders should provide their SCC membership number to confirm eligibility to participate.
4. Successful bidders will be informed of their winning bids shortly after the close of the auction. Invoices will be included with the dispatched auction lots. Postage (and insurance, if applicable) will be added to the price of the successful bid(s). Payment can be made in U.S. funds by check (to the "SCC Library"), USPS postal money order, bank draft, or in currency (at sender's risk, auctioneer suggests certified or insured mail). Sorry, credit-card payments are not accepted, although payments via PayPal can be arranged (inquire with the auctioneer).
5. Lots may be returned for a refund if grossly misdescribed. Lots consisting of multiple non-book items are only approximately described, so slight inaccuracies in the item counts and description of the lots are not cause for return. Books, catalogs and periodicals are generally used library copies in serviceable condition, unless otherwise noted in the lot descriptions.
6. Prices realized for lots are published in *The Posthorn*. Unsold lots are noted at the end of the prices realized list, and are available on a first-come, first-served basis at their starting bids.

Lot Numbers and Descriptions:

1. **Denmark:** *The Stamps of Denmark*, in English, by Bertram W. H. Poole, Severn-Wylie-Jewett Co., Portland, Maine, 1947, ii + 34 pages, illustrated, card-cover paperback, good condition (front cover blemished). Classic monograph that includes a brief history of Denmark, treatment of early Danish postal history and detailed presentation on 1851-1919 stamp issues. CMV = \$18, Starting Bid = \$2.
2. **Denmark/Danish Areas/Forgeries:** *AFA Danmark, Grønland, Island, Dansk Vestindien Specialkatalog 1971*, in Danish, Aarhus Frimærkehandel, Aarhus, Denmark, 1970, 320 pages, profusely illustrated, softbound, ISBN 87-7012-014-5, pristine. Although superseded by later editions, this seldom-offered reference offers detailed, specialized information on plate varieties and flaws and contains an invaluable profusely illustrated 41-page listing of bogus stamps and postmarks for all the countries covered. CMV = \$7.50, Starting Bid = \$2.

3. **Denmark/Danish Areas:** *AFA Specialkatalog 1987-88*, in Danish, Lars Boes (Editor), Aarhus Frimærke-handel, Aarhus, Denmark, 1987, 592 pages, profusely illustrated, hardbound, ISBN 87-7012-164-8, pristine. The standard reference stamp catalog in Denmark where AFA Catalog numbers are used extensively, with extensive specialized listings of the stamps of Denmark, Faroes, Greenland, DWI and Schleswig-Holstein. Although superseded by later editions, this catalog remains an essential reference because of its several still-current, valuable specialist articles on the handstamps and postmarks of Schleswig-Holstein and Greenland, Greenland parcel cards and letters, plate flaws of Danish 1918-33 Christian X issues, Danish postal etiquettes, Danish essays and proofs, and Danish booklets, with detailed tables of Danish postal rates from 1851 to 1981. Out-of-print, high-demand reference work. CMV = \$60, Starting Bid = \$15.
4. **Denmark:** Three profusely illustrated Danish Christmas seal catalogs (paperbacks): *Julemærkekatalog Nr. 14*, bilingual (Danish and English), *A/S Albuma*, Copenhagen, 1972, 52 pages, and *Julemærket 1904-1970* and *Julemærket 1904-1974*, in Danish, Julemærketkomiteen, Copenhagen, both 36 pages, excellent condition except front cover missing on *Julemærket 1904-1974*. EMV = \$7, Starting Bid = \$2.
5. **Denmark:** Two catalogs for Copenhagen's International Stamp Exhibitions (*HAFNIA 76 Katalog 3* and *HAFNIA 87 Bulletin 1*), in Danish and English, 304 and 50 pages, respectively, profusely illustrated in color, softbound, pristine. Contents include detailed articles in English on the three Hafnia 76 miniature sheets, Court-of-Honor Exhibit items, Otto Boche's painting used for one of the Hafnia 76 miniature sheets, retouches of clichés of Denmark's first stamp issues, Denmark's rare inverted frames, 100-year history of the Copenhagen Philatelic Club (1887-1986), Hafnia 87 miniature sheet, suburban letters from Copenhagen (1806-60) and Danish postman and the press, letters, newspapers and news. EMV = \$8, Starting Bid = \$2.
6. **Faroes/Iceland/Periodical:** *North Atlantic Philately*, four issues (No. 1 1988, No. 1 and 2 1989, and No. 1 1990, 136 pages in toto), semi-annual English-language publication of Postverk Føroya edited by Kristian Hopballe. Each issue contains five philatelic feature articles, examples of which include specific Faroese post offices, Icelandic WWII postal history and thematic topics. EMV = \$10, Starting Bid = \$2.
7. **Finland:** *Finland I Briefmarken, 6. Auflage / Finland Stamps I, 6th Edition*, in German, Helsingfors Frimärkssamlare Förening r.f., Helsinki, 1934, 104 pages, profusely illustrated, softbound, excellent condition for its age. Outdated specialized priced catalog of Finnish stamps with useful reference information, but probably more of interest as an antique catalog than for any detailed text. CMV = \$10.50, Starting Bid = \$2.
8. **Finland:** *The Color and Printing Identification of the 1875 Issues, A New Approach, Volume II, Tables*, by Herbert Oesch, Authorized English Translation by Kauko I. Aro, Scandinavian Philatelic Foundation, Thousand Oaks, Calif, 1993, iv + 450 pages, hardbound, ISBN 0-936493-16-X, pristine. Tables arranged alphabetically by place name, tracking the distribution of stamps to each different Finnish post office, which enables identification of the printings by the postmarks on these stamps. CMV = \$55, Starting Bid = \$22.
9. **Finland:** *Suomen Postilähetysten Hinnasto, 1899-1960, Pricelist of Finnish Letters and Cards*, in English and Finnish, by Martin Holmsten, Oy Rurik Ltd., Vasa, Finland, 1991, 95 pages, illustrated, softbound, pristine. Out-of-print, useful priced Finnish postal history guide that also deals with Russian stamps used in Finland before 1918, illustrated with numerous cover examples evaluated according to their frankings and cancellations. CMV = \$39, Starting Bid = \$16.

Please...

**Make it a Point When Purchasing
to Support Our Advertisers**

They support our hobby and our journal!

- 10. Finland:** *Post Offices in Finland, 1638-1985*, English translation by Anneli Hvidonov, Scandinavian Philatelic Foundation, Thousand Oaks, Calif., 1989, iv + 108 pages, illustrated, softbound, ISBN 0 936493-13-5, good condition (front cover marred). English translation of the introductory section of the Finnish edition of Suomen Postitoimituspaikat 1638-1985 by Kalle Vaarnas and Kaarlo Hirvikoski. Excellent overview of the development and descriptions of the Finnish postal service's postmarks, postal markings, and cancelers. CMV = \$20, Starting Bid = \$8.
- 11. Iceland/Stamps:** Two souvenir items for the Nordia 2013 Stamp Exhibition, held June 7-9 in Gardabær, Iceland: ~6- by 8-inch menu folder for the Palmarès banquet with affixed Aurora Borealis s/s of 4 stamps tied by Aug. 16, 2013, first-day postmark (Facit No. 1414-17 @ SEK100 = ~\$14), and unaddressed 2011 domestic-rate Burðargjald Greitt postal card, postmarked Garðabær June 3, 2013, with a Nordia 2013 announcement printed on message side. CMV = \$25, Starting Bid = \$4.
- 12. Norway:** *Norway, Plating of the First Issue*, in English, *Billig's Specialized Catalogues*, Volume 3, Fritz Billig, Jamaica, N.Y., 1948, 62 pages, profusely illustrated, paperback, excellent condition. Classic handbook comprising three authoritative monographs by J. Jellestad, A. Odffjell, and Dr. Justus Anderssen on their detailed plating studies of the 1855 4-skilling coat-of-arms and 1857 3-skilling and 1856-60 4-skilling Oscar I issues. CMV = \$20, Starting Bid = \$4.
- 13. Sweden:** *Swedish Postage Stamps*, by Sven Åkerstedt, Sweden Post, Stockholm, 1968, 28 pages, profusely illustrated, softbound, pristine. Booklet with three stamp reproductions on attached card page inside front cover and one on front cover (Scott Nos. 1, 4, 164 and 204); although not listed in Facit, these could be regarded as "official" Sweden Post reprints! CMV = \$30, Starting Bid = \$5.
- 14. Sweden:** *Sveriges Frankotecken, Handbok, Del II -1962 / Sweden's Postage Stamps, Handbook, Part II -1962*, in Swedish, by Erik Blomberg, Erik Kihlblom, Erik L. Magnus, Georg Menzinsky and Hugo Olsson, SFF (Sveriges Filatelist-Förbund), Stockholm, 1962, 224 pages, illustrated, softbound, excellent condition. Classic reference, an anthology of 12 articles by five authors on Swedish stamp issues, with subjects ranging from the 1862 local provisionals to 1949 coils, including postage dues. CMV = \$25, Starting Bid = \$5.
- 15. Sweden:** *50th Jubilee of the Swedish Postal Administration's Post Office Stamp Printing Works*, by Nils Hörjel, Sweden Post, Stockholm, 1970, 32 pages, profusely illustrated, paperback, pristine. Interesting stage-by-stage account of the Printing Works' history. CMV = \$10, Starting Bid = \$2.
- 16. Sweden:** *Oscarsperiodens Frimärken, 1885-1911 / Stamps of King Oscar's Reign, 1885-1911*, in Swedish, by Nils Falk and Robert Mattson, SFF (Sveriges Filatelist-Förbund), Stockholm, 1985, 144 pages, illustrated, softbound, ISBN 91-85702 17 X, pristine. SFF Handbook A:3, a classic reference with extensive treatment of Swedish stamps of the King Oscar II period, including paper types, printing methods, colors, watermarks, gum, perforations, essays, proofs, mirror prints, paper, plate flaws, vending machine stamps, booklets, control marks and known errors, freaks and oddities. CMV = \$20, Starting Bid = \$5.
- 17. Sweden:** *50 Års Svensk Postal Dokumentation / 50 Years of Swedish Postal History*, in Swedish, by Palle Laursen and B. E. Stavenow, SFF (Sveriges Filatelist-Förbund), Stockholm, 1977, 86 pages, illustrated, ISBN 91-85702-00-5, softbound, good condition (cover blemish). SFF Specialized Handbook No. 8, covers post-UPU postal usage and rates from 1874 for covers, parcel cards, and postal stationery. EMV = \$20, Starting Bid = \$4.
- 18. Sweden:** *The Dieden/Hansen Collection of Classic Sweden*, Harmers of New York auction catalog for its December 16, 1987, Sale No. 2799, with list of prices realized, 28 pages (10 pages of black-and-white plates), paperback. Sale consisted of 175 lots of Sweden stamps and postal history. CMV = \$15, Starting Bid = \$2.
- 19. Sweden:** *Tidiga Svenska Datumstämplar, Del 2. Fyrkantstämplar / Early Swedish Datestamps, Part 2. Boxed Postmarks*, in Swedish, by Karl-Erik Stenberg, SFF (Sveriges Filatelist-Förbund), Stockholm, 1974, 88 pages, profusely illustrated, softbound, pristine. SFF Specialized Handbook No. 6, alphabetical listing by town names of boxed datestamps for pre-postage-stamp covers. EMV = \$16, Starting Bid = \$4.
- 20. Sweden/Topicals:** *Gåva till våra abonnenterna / Gift to our subscribers* — PFA presents a complimentary gift annually to its standing-order clients, otherwise not available from PFA through its retail price lists or other means. This lot consists of five (1986 and 1988-91) gifts comprising 148 mm by 219 mm card (1986) and folders (1988-91) with pasted-down stamp issues (respectively, Scott Nos. 1351, 1713-18, 1761, 1829-30 and 1903a, catalog value = \$13.30 as used stamps), tied by special PFA circular datestamps. Nice topical items representing fine arts, birds, ships, Christmas and iron mining. EMV = \$15, Starting Bid = \$5.

-
21. **Sweden:** Three PFA presentation items: *1973 Mot FjÄrran Mål / To Faraway Places*, 16-page trilingual (Swedish, English, and German) booklet on celebrated Swedish explorers, containing explorer set of five (Scott Nos. 1005-09, cat. \$5.50 as used singles) tipped inside front cover and tied by Sept. 22, 1973, First-day postmarks + 1974 Stockholmia folder with Oct. 7, 1972, complete booklet pane of 10 (Scott 950a, cat. \$10 used) tipped inside and tied by Sept. 22, 1973, first-day postmarks + Carl XVI Gustaf-Silvia Sommerlath wedding issues (coil and booklet stamps, Scott 1163-65, cat. 80€) tipped inside and tied by June 19, 1976, first-day postmarks. Nice ancillary specialist items. EMV = \$16, Starting Bid = \$5.
22. **Sweden:** Two catalogs (Bulletin 1 and Katalog 3) for the Stockholmia 74 International Stamp Exhibition, in Swedish, French and English, 96 and 278 pages, respectively, profusely illustrated in color, softbound, good condition. Contents include detailed articles in English on Sweden's 1924 UPU stamps, Royal Warship Wasa, castle and water stamp motifs, Swedish covers during the 1855-58 Skilling-Banco period, Swedish collection of the Postal Museum in Stockholm, Argentina's Corrientes Province stamps and Suez Canal ("Canal Maritime de Suez") local stamps. EMV = \$10, Starting Bid = \$2.
23. **Sweden/Postal History:** Two catalogs (Bulletins 1 and 2) for Stockholmia 86 International Stamp Exhibition, in Swedish and English, 112 and 96 pages, respectively, profusely illustrated in color, softbound, good condition. Contents include informative articles in English about the 350th Anniversary of Sweden Post, 100 years of the SFF, Oscar II – Sweden's first portrait stamps, Stockholm as depicted on stamps, s/s Express ("The Winterboat") and Stockholm's earliest post offices. EMV = \$10, Starting Bid = \$2.
24. **Scandinavia:** Facit 1968 *Specialkatalog* and 1979-1980 *Lilla Facit*. Outdated but still useful softbound priced catalogs for their listings as *Lilla Facit* was in full color 24 years before the *Facit Specialkatalog* and Facit 1968 contains detailed specialized listings of the early Sweden issues. EMV = \$4, Starting Bid = 50€.
25. **Scandinavia/Nordic/Periodical:** SCC's *The Posthorn*, in English, two maroon library hardbound editions housing Volumes 1-6 (1943-49) and Volumes 7-12 (1950-55), respectively, pristine. Great archival and historical information chronicling the early years of the SCC, along with a plethora of research articles! Rare opportunity to obtain all these early issues in bound format! EMV = \$30, Starting Bid = \$10.
26. **Scandinavia/Periodical:** *FH-nytt*, Swedish language house organ for Facit, seven different 1968-71 issues of this 5¼- by 8¼-inch profusely illustrated periodical published by Frimärkshuset (Stockholm), ranging from 40-128 pages (70 pages average). Magazine useful as Facit nostalgia, containing primarily auction and net price lists with occasional philatelic articles. EMV = \$7, Starting Bid = 50€.
27. **Scandinavia/Nordic/Periodical:** *Frimerke Forum, Tidsskriftet for Frimerkesamlere og Filatelistere i Norden / Stamp Forum, Magazine for Stamp Collectors and Philatelists in the Nordic Countries*, in Norwegian, 12 different issues (9 x 1972-74 + 3 x 1977-81) of this Oslo-published ~6- by 8¼-inch profusely illustrated periodical, issues range from 44-92 pages (65 pages average) with brief to in-depth articles on stamps, postal history, postcards and other subjects. Note this selection contains in-depth articles on Norwegian registry labels, classic Finland stamps, Svalbard, Christiania postal history, Latvia, Norway's 1863-66 stamps and Norwegian military postal cards. EMV = \$30, Starting Bid = \$6.
28. **Nordic/Stamps:** *Rejse i Norden / Travels in the Nordic Countries*, 8¼ by 11 inches, slick 24-page booklet with the theme "Tourist Attractions," a 1993 joint production from the eight Nordic postal administrations in which each of their countries is described in native and English text accompanied by the following 1993 mounted complete sets of two mint Scott-listed stamps: Denmark 981-82, Faroes 250-52, Iceland 768-69, Greenland 240-41, Norway 1036-37, Finland 912-13, Sweden 1993-94 and Aland 73-74 (Scott value = \$28.60). Great overview representation of these countries. EMV = \$30, Starting bid = \$12.
29. **Miscellaneous:** *The Stamp Specialist*, Maroon Book, H. L. Lindquist (Publisher), New York City, 1944, 128 pages, profusely illustrated, hardbound, good condition. Anthology of nine excellent reference articles on a wide range of subjects, including the Confederacy, Switzerland's 1846-48 large Geneva eagles, British Postal agencies in Puerto Rico, a primer of English postal history to the adhesive period, Victorian Canada stamp issues and postal history of the Ionian Islands. CMV = \$18, Starting Bid = \$5.
30. **U.S.A.:** *United States Postal History Sampler*, by Richard B. Graham, *Linn's Stamp News Handbook Series*, Amos Press, Sidney, Ohio, 1992, vi + 186 pages, profusely illustrated, softbound, ISBN 0-940403, pristine. Comprehensive overview within its 15 chapters on all the various aspects of U.S. mail – an essential reference and primer for anyone with an interest in U.S. cover collecting! CMV = \$10, Starting Bid = \$4.

Stamps and Ephemera

The 21 lots that follow come from a generous donation by one SCC member and consist of stamps, labels, ephemera and/or postcards, all accurately priced and at low starting bids. Disclaimer: Although the auctioneer attempts to accurately describe each lot and determine its market value, bidders are reminded of the auction term that lots consisting of multiple non-book items are only approximately described, so inaccuracies in the item counts and description of the lots are not cause for return. Please carefully read the lot descriptions to avoid misunderstandings about the lot contents, and feel free to contact the auctioneer (rcichorz@comcast.net / 303-494-8361) if you desire further details and/or clarification.

- S1. Denmark/Stamps:** three VF used D.S.B. (Danish State Railway) parcel stamps of the 1906-13 issue, 10-, 30- and 40-øre denominations, Nos. 6-8 in *Katalog over Danmarks Jernbanefrimærker*, also three modern used D.S.B. stamps included as a bonus not counted. EMV = \$15, Starting bid = \$3.
- S2. Denmark/Stamps:** 6¼- by 9-inch Lighthouse 16-page stock book containing 445 different used, primarily VF 1871-1996 definitives and commemoratives plus an additional 25 BOB (semi-postal, postage due, official and late fee stamps), all neatly arranged by Scott catalog numbers (but unchecked for more expensive varieties), ranging from Scott 26 to 1062, primarily cheaper stamps, but several noted in the cat. \$5 range, includes nice selection of wavy lines, caravel, king/queen, and state seal definitives — an excellent starter collection of better quality stamps than the run-of-the-mill packets of “450 different Denmark stamps” offered at ~\$14 retail, so let’s figure 5¢ a stamp for the low starting bid. EMV = \$100+, Starting Bid = \$23.
- S3. Finland/Airmail Labels:** ca. 1947-48 pristine intact ~5¼” x 9” sheet of 21 (3 by 7 arrangement) black on blue paper, boxed “Par avion / Ilmaposti - Luftpost” rouletted, gummed labels, with top margin selvage imprinted at left “Lomake Blankett } N:o 75” — interesting ancillary item for Finnish airmail collection or exhibit. EMV = \$10, Starting bid = \$2.
- S4. Norway/Stamps:** *Postens Ol-Bok '94*, Norway Post’s 1994 Olympics Stamp Book, trilingual in Norwegian, English and German. Norway Post, Oslo, 1994, i + 64 + i pages, profusely illustrated in color, black-covered hardbound edition, pristine. Official philatelic souvenir book for the 1994 Winter Olympics in Lillehammer — an excellent addition for an Olympics thematic collection. Norway’s 10 mint stamps and five souvenir sheets (four stamps each) issued for this Olympics are mounted therein, and there are eight additional Norwegian 1994 Olympics bonus items (two FDCs and six postcards @ Scott value of \$19 as postally used stamps) included in this lot but not counted. CMV = \$119 (book), Starting Bid = \$60.
- S5. Norway/Stamps:** Group of 80 different used VF ~1999-2008 pictorial stamps on stock card, includes 18 “A”/inland denominations, Scott cat. @ 50¢-\$1 each for most, but figure 5¢ each to start. EMV = \$8+, Starting Bid = \$4.
- S6. Norway/Stamps:** Roughly ~485 different used, primarily VF ~1937-2008 stamps on two stock sheets, includes 50 officials, 45 Post Horns, 30 Rampant Lions and selection of 1950s to modern definitive and commemoratives, high Scott cat. — a great starter collection of better quality and selection than the run-of-the-mill packets of “450 different Norway stamps” offered at ~\$12 retail, so let’s figure 5¢ each stamp for the low starting bid. EMV = \$75+, Starting Bid = \$24.
- S7. Sweden/Stamps:** VF used complete set of 34 of Sweden’s 1939-71 “Three Crowns” definitive stamps (Scott 282-88, 394-98, 416-17, 425-26, 431, 439-41, 473, 588-91, and 656-64 / Facit 284-317, Scott \$31.15, Facit SEK270/~\$34. CMV = \$25, Starting bid = \$10.
- S8. Sweden/Stamps:** *Svenska Frimärken Berättar, Årsbok 87/88 / Swedish Stamps Storytelling, Yearbook 87/89*, trilingual in Swedish, English and German, PFA Swedish Stamps, Stockholm, 1988, 36 pages, profusely illustrated in color, green-cover hardbound edition, pristine. Official yearbook with Swedish mint stamps, booklet panes and souvenir sheets mounted therein, but without the black-print souvenir card — the first of the Sweden Post annual stamp yearbooks, scarce and in demand. CMV = \$90, Starting Bid = \$45.
- S9. Sweden/Ephemera:** lot of seven lottery cards and three telephone cards. EMV = \$10, Starting bid = \$1.
- S10. Sweden/Ephemera:** pristine blue-on-white 8¼- by 11½-inch poster for the Samlarföreningen Bältespannarna (Sweden’s Cinderella Collectors Association) stamp exhibition held April 22-23, 1978, in Sollentuna, depicting oversized illustrations of a 1930s Lund-Bjerrød Railway 25-öre freight stamp, 1938 Swedish National Flag Day poster stamp, and Nässjö local post 4-öre stamp. EMV = \$7.50, Starting bid = \$1.

S11. Sweden/Svarslösen Stamps: Five VF mint strips of three Svarslösen (reply postage-paid stamps) issued by the Swedish Post Office for sole use of Det Bästa (*The Pick*, Sweden's version of *Reader's Digest*), difficult stamps to acquire, Michel 1-5 @ €42/~\$50. CMV = \$50, Starting bid = \$25.

S12. Sweden/Svarslösen Covers: Group of 10 commercial business-reply envelopes modern postal history lot, consisting of seven Det Bästa covers (see previous stamp lot for explanation) franked with Svarslösen stamps — four unused and three used postmarked 1969-71 — and three unused Svarskuvert (response envelopes) with printed addresses to the Franklin Mint, IOGT-NTO Lotteries, and AB Sporrang AB and with their printed prepaid-postage indicia, difficult covers to acquire. EMV = \$50, Starting bid = \$25.

S13. Sweden/Postcards: Lot of 27 different unused 5¼- by 4⅞-inch multi-colored postcards issued by Sweden Postverkets Tryckeri during 1978-86, most with various Sweden stamp issues, pristine. EMV = \$7, Starting bid = \$2.50.

S14. Sweden/Postcards: Similar lot (all cards here included in previous lot), 13 (nine different + four duplicates) unused 5¼- by 4⅞-inch multicolored postcards issued by Sweden Postverkets Tryckeri during 1978-86, most depicting various Sweden stamp issues, pristine. EMV = \$3, Starting bid = \$1.

S15. Sweden/Postcards: Eight unused oversized 5½- by 7⅞-inch postcards issued by Sweden Postverkets Tryckeri, duplicate sets of three depicting dinosaurs and the other two depicting Sweden's 1991 rock musicians stamps, with an accompanying "Förhistoriska djur/Prehistoric Animals" folder/holder. EMV = \$3, Starting bid = \$1.

S16. Sweden/Postcards: Group of 33 different unused 5⅞- by 4⅞-inch primarily multicolored postcards depicting Swedish nobility, pristine. EMV = \$8, Starting bid = \$3.

S17. Sweden/Postcards: Lot of 34 different postally used 5⅞- by 4-inch primarily multicolored pictorial postcards with single Swedish stamp frankings from the 1960s-80s, good condition. EMV = \$12, Starting bid = \$5.

S18. Sweden/Germany/Postcards: Three different 4- by 5¼-inch vertical-format, multicolored Christmas postcards posted from Germany to Sweden in the 1970s, but returned to senders with ancillary purple rubber-stamped rectangular "non-deliverable" cachets, interesting modern postal history lot. EMV = \$3, Starting bid = \$1.

S19. Sweden/Medical Advertising: Four different Abbott Pentothal "Dear Doctor" pictorial postcards with printed simulated handwritten ad message on address side, single Swedish stamp frankings postmarked 1956-60, good condition. Cards depict Stockholm's Stadshus, Bohusläns wharf, Laplandish living quarters and the Stockholm Concert Hall stage during presentation of Nobel Prizes for 1959. CMV = \$20, Starting bid = \$10.

S20. Sweden/Göteborg Local Post: Two unused 1889 brefkort (letter cards = folded stationery with perforated selvages), denominated 3 öre in two different blue color shades, very fine condition, listed as No. H1a in Den Svenska Lokalposten and LPK-71, Specialkatalog över Svensk Lokalfirmärken, and Göteborg H4 in Facit Sverige 1995 (in 1995, each @ SEK50/~\$6). EMV = \$25, Starting Bid = \$10.

S21. New Zealand/Private Mail Stamps: Lot of 90 postally used on-paper New Zealand private-mail stamps issued starting 1998, consisting of 72 different NZM (New Zealand Mail), 15 Fastway Post, and one each of Pete's Post, DX Mail, and Croxley Mail — no comprehensive catalog yet published, but an online listing with no values exists (www.stamps4u.co.nz/info/PPS.htm) — smaller lots of these stamps sell on eBay at an average of 10¢ per stamp. CMV = \$9+, Starting Bid = \$4.



Prices Realized – SCC Library Auction #37 (Closed Feb. 1, 2015)

Summary: For this auction, there were 11 bidders, nine of whom were successful in winning one or more lots. A total of 26 of the 30 lots sold, with realizations totaling \$320.50, against cumulative starting bids of \$198.

#1 = \$12, #2* = \$30, #3* = \$50, #4 = \$1, #5 = NS, #6 = \$3.50, #7 = \$7, #8 = \$3, #9 = \$16, #10 = \$2, #11 = \$42, #12 = \$3, #13 = \$32, #14 = NS, #15 = \$2, #16 = \$8, #17 = \$11, #18* = \$10, #19* = \$10, #20 = \$11, #21 = \$6, #22 = \$6, #23 = \$6, #24 = \$11, #25 = \$17, #26 = \$3, #27 = NS, #28 = \$13, #29 = NS and #30 = \$5.

Notes: *Lot Nos. 2, 3, 18 and 19 received tied high bids and, in accordance with the auction terms, these lots sold to the bidders submitting the earlier bids. NS indicates lots #5, 14, 27 and 30 did not sell. ■

Auctioneer of rare stamps

Specialities:

Scandinavian stamps and covers.

Classic stamps and covers of the World.

Large collections and accumulations.



*Catalogue available at www.postiljonen.com
or through subscription.*

Consignments are always welcome!



AuctionHouse international

Postiljonen

We value your collection

Box 537 • SE-201 25 Malmö • Sweden • Tel. +46 40 25 88 50 • Fax. +46 40 25 88 59
www.postiljonen.com • stampauctions@postiljonen.se

northstamp.com

... like fishing in
your lucky spot!

At northstamp.com you will enjoy that same exciting feeling as you discover a tremendous variety of specialized stamps and covers...our new "Stamping the Globe" video series... plus monthly coupons, discounts and special promotions. We've been helping collectors find great stamps since 1975.

Reel in some great deals today!

Watch our new video series at
northstamp.com

Stamping the Globe

with Jerry



"A Visit to APS"



"A Visit to APS"

"Perfecting the Perf"

"Neither Rich Nor Royal"

"Big Covers"

"My Wish List"

"The Stamp Market Today"

"Greenland Pakke Porto's"

"It's Greek to Me"

northstamp.com

NORTHLAND INTERNATIONAL TRADING, LLC

80 Bloomfield Avenue, Caldwell, New Jersey 07006

973-226-0088 • 800-950-0058 • northstamp@aol.com • Fax: 973-403-2601



Author Index

Issue/Page

| | | |
|--|---|------------------------|
| Anon. | | |
| | Finnish Stamps Win Three International Design Awards | 4/24 |
| | Sweden's 2014 EUROPA Issue Features the Nyckelharpa | 2/19 |
| Aro, Kauko | | |
| | SCC Financials for FY 2011 + 2012 | 1/39 |
| | SCC Financials for FY 3013 + 2014 | 2/29 |
| Banke, Frank | | |
| | Auction Marketplace | 1/18, 2/20 |
| Cichorz, Roger | | |
| | From the Stacks | 1/26, 2/26, 3/37, 4/37 |
| Donaldson, Wayne | | |
| | A Swedish Postmark Quandary | 4/24 |
| Flack, Brian | | |
| | Questions on the Use of Numeral Cancells: Part II | 4/23 |
| Fraser, Ed and Jukka Mäkinen | | |
| | Finland's Seal Stamps and Postal Receipts | 4/4 |
| Grosjean, Warren | | |
| | A Danish Skilling Bicolor with both Inverted Frame and Watermark | 4/22 |
| Gustafson, Per | | |
| | Divided Postcards: Their Introduction and Early Postal History in Scandinavia | 3/6 |
| Karlsson, Asko (See Stone, Jeffrey) | | |
| Lund, Steve | | |
| | Book Review: <i>Håndbok over Norges Frimerker: NK 25</i> | 1/23 |
| | News from the Home Office | 1/30, 2/30, 3/30, 4/30 |
| Mäkinen, Jukka (see Ed Fraaser) | | |
| Nelson, Paul | | |
| | 21st Century Cigarette Taxpaid Strips from Denmark | 3/21 |
| Noer, Geoffrey | | |
| | 1897 Stationery Card from the Faroe Islands to Germany | 3/19 |
| Oliver, Susan | | |
| | 1893 Postal Stationery Postcard from Faroe Islands to Germany | 4/25 |
| Quinby, Roger | | |
| | Mixed Franking in Finland 1891-1917 | 1/8 |
| | President's Letter | 1/3 |
| Stone, Jeffrey and Asko Karlsson | | |
| | The Golden Ear Postal Stationery Cards of Finland: A Problematic Variety | 2/15 |
| Thurman, Carl | | |
| | Norway's Prestamped Postal Cards Issued during the Period of Occupation | 2/6 |
| Tuuri, Randy | | |
| | Chapter Reports | 1/32, 2/32, 3/32, 4/32 |
| | President's Letter | 2/3, 3/3, 4/3 |

Warren, Alan

Book Reviews

| | |
|---|------------------------|
| <i>Classic Sweden: The Golden Collection of Swedish Philately</i> | 1/22 |
| <i>Fakes Forgeries Experts No. 17</i> | 4/24 |
| <i>Icelandic Numeral Cancels 1903-1960</i> | 4/24 |
| <i>Lysebilder presenteret i PowerPoint</i> | 2/23 |
| <i>Reidun and the Kvarstad Women</i> | 1/21 |
| <i>Spitsbergen's Early Postcards: An Annotated Catalogue</i> | 3/26 |
| <i>Sweden in Philately up to 1920</i> | 3/25 |
| <i>XpoNAT I-V (Stamp and Postal History Exhibits)</i> | 1/24 |
| Matt Kewriga Wins SESCAL Grand | 4/17 |
| NORDIA 2014 a Big Success! | 4/20 |
| Norway's First International Stamp Exhibition | 2/17 |
| Obituaries: Sigurður Holm Þorsteinsson | 1/34 |
| SCC Election Results | 4/18 |
| Scandinavian Area Awards | 1/33, 2/33, 3/36, 4/31 |
| Scandinavian Literature Notes | 1/35, 2/35, 3/35, 4/35 |
| Scandinavian Philatelic Foundation Closes | 2/4 |
| Sweden's First Aerogram | 1/7 |
| Transfers and Re-Entries | 1/32, 2/32, 3/33, 4/33 |

Youngblood, Wayne

| | |
|-----------------|--------------------|
| Editor's Letter | 1/2, 2/2, 3/2, 4/2 |
|-----------------|--------------------|

Zelenak, Michael X.

| | |
|---|------|
| Book Review: <i>Arendal Local Post Catalogue: History and Postmarks</i> | 3/26 |
|---|------|

