

**Nordia 2016**  
**(Page 4)**



# The POST HORN



**A Most Unlikely DWI cover**  
**(Page 2)**



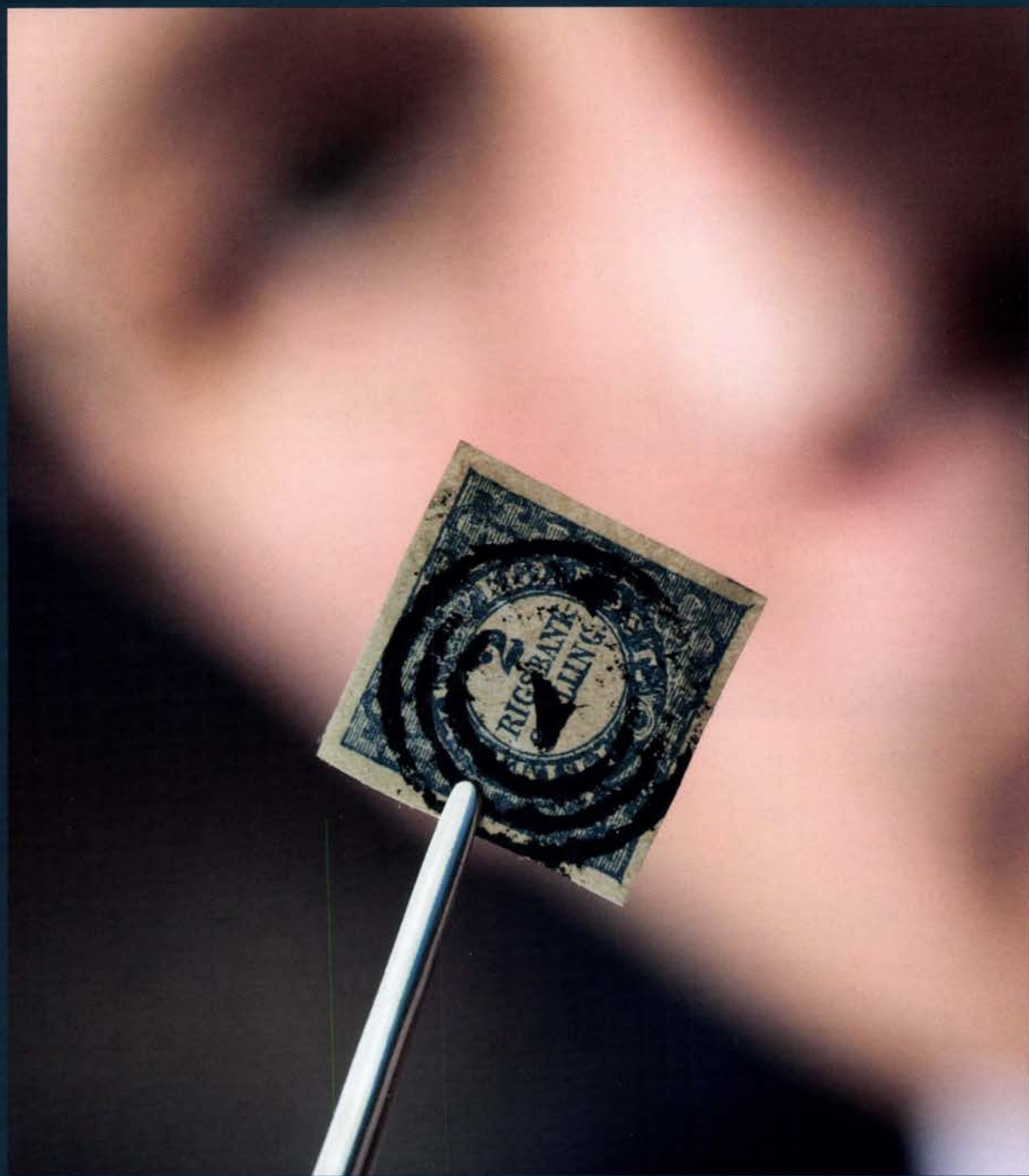
**When Denmark Had**  
**Palm Trees**  
**(Page 6)**



**The Sory of a WWII**  
**Norwegian Undercover**  
**Address in Lisbon**  
**(Page 13)**

**...and don't forget the**  
**SCC auction (No. 43)**  
**(Page 39)**

# Stamps at auktion



[bruun-rasmussen.dk](http://bruun-rasmussen.dk)





Official Publication of the Scandinavian Collectors Club  
Published Quarterly Since 1943

Vol. 73, No. 2

May 2016

Whole No. 287

## Table of Contents

A Most Unlikely DWI Cover; the Wreck of the Steamer <i>Metropolis</i> .....	Wayne L. Youngblood .....	2
Nordia Report/Awards at Nordia 2016 .....	Mike Ley .....	4
When Denmark had Palm Trees: Stamps of the Danish West Indies .....	Peter Messerschmidt.....	6
The Story of a WWII Norwegian Undercover Address in Lisbon .....	Ed Fraser .....	13
Finlandia 2017.....		20
Finland: A Correction.....	Ed Fraser .....	20
Under Review: <i>LAPE 2012, Finland Special Stamp Catalog, Part 1</i> ..	Steve Lund .....	22
<i>Excellence in Philately: The Indriði Pálsson Large Gold Medal Collection of Classic Iceland</i> .....	Alan Warren .....	23

## Departments

Auction Marketplace.....	24	Scandinavian Literature Notes .....	34
Chapter Reports .....	33	SCC & Scandinavian Show Calendar.....	17
Editor's Letter from Scandinavia.....	2	SCC Auction No 43 .....	39
From the Stacks.....	26	SCC Auction No 42 Prices Realized.....	44
Letters to <i>The Posthorn</i> .....	4	SCC Chapter Meetings & Contacts.....	37
Member Advertisements .....	28	SCC Member Services.....	16
News from the Home Office .....	38	SCC Officers .....	29
President's Letter .....	3	Transfers and Re-Entries .....	30
Scandinavian Area Awards .....	37		



## Editor's Letter

from Scandinavia, kind of...

By Wayne L. Youngblood

### NY2016

As I write this (late May), World Stamp Show New York 2016 is just about to begin.

Preparations have been underway for the better part of a decade for what will – at the end of eight days – seem like a quick flash.

Although we cannot (obviously) provide coverage of the show in this issue, many of us will attend the show. Expect to see more than a little bit of reporting on NY2016 as it relates to the SCC in the August issue.



Due to space constraints in this issue, an article I've been working on begins below and will continue on Page 9. I hope you find it enjoyable.

## A Most Unlikely DWI Cover; the Wreck of the Steamer *Metropolis*

Wayne L. Youngblood

On Sept. 30, 2015, *Hurricane Joaquin* was born, evolving in just a few days from a tropical depression to a Category 3 major hurricane that – for almost two weeks – battered the Southeastern United States, Virgin Islands (ex-Danish West Indies), Turks & Caicos Islands, Bahamas, Cuba, Haiti, Bermuda, Azores and even

▼ *Below: All that remains of the steamer Metropolis, which broke up and sank off the North Carolina coast Jan. 31, 1878.*



Feature continues on Page 9.



A Journal of Scandinavian Philately  
[www.scc-online.org](http://www.scc-online.org)

### EDITOR and GRAPHIC DESIGNER

Wayne L. Youngblood  
4615 Lindell Blvd Apt 1102  
St. Louis MO 63108 (USA)  
[wystamps@gmail.com](mailto:wystamps@gmail.com)

### BUSINESS MANAGER

Darryl Templer  
PO Box 2911, La Jolla CA 92038-2911 (USA)  
[dtempler1@att.net](mailto:dtempler1@att.net)

### MEMBERSHIP INQUIRIES

Steve Lund, Executive Secretary  
PO Box 16213, St. Paul MN 55116  
[steve88h@aol.com](mailto:steve88h@aol.com) (USA)

### EDITORIAL BOARD

Bjørn Mugggerud, Norway  
Paul Nelson, Arizona  
Alan Warren, Pennsylvania

Contributors are asked to send their submissions to the Editor. Electronic submissions are preferred. Text should be in Microsoft Word and include bibliographic references. Graphics should be scanned at a minimum of 300 dpi, preferably in .tif format. Color photocopies of illustrations are acceptable if electronic versions are unavailable. Contact the Editor with any questions. Unless otherwise requested by the author, published material may be reproduced on the SCC Website, [www.scc-online.org](http://www.scc-online.org).

POSTMASTER: Send address changes to The Posthorn, SCC Executive Secretary, PO Box 16213, St. Paul MN 55116.

© Copyright 2016 by the Scandinavian Collectors Club, a 501(c)3 nonprofit organization. All rights reserved.

Permission to reprint must be obtained from the Editor. The opinions expressed are those of the authors and not necessarily endorsed by SCC, its officers, or staff.

*The Posthorn* (ISSN 0551-6897) is published quarterly by the Scandinavian Collectors Club, SCC Executive Secretary, PO Box 16213, St. Paul MN 55116. Membership, including subscription, \$30 per year; \$35 in Canada and \$40 for addresses outside North America. Contact the Executive Secretary for membership and change of address. Advertising rates and terms available from the Business Manager. Periodical postage paid at St. Paul MN 55116 and at additional entry offices.



---

## President's Letter

---

By Steve Lund



# *Scandinavian Specialized Catalog Collection Available*

An impressive array of new catalogs was assembled for the SCC Society Table No. 1482, NY2016, May 28-June 4, 2016. Included were: *FACIT Special Classic*, *Norden 2016*, *Postal IX*, *LAPE Special/Part I*, *Norgeskatalogen 2016*, *Norgeskatalogen Postal II* and *AFA Special Danmark 2016*. Catalogs were available as new or renewal incentives, packaged with three-year prepaid memberships. SCC can now process credit card transactions using Square. The entire 125-catalog inventory was expected to sell out.

The program, "Using Scandinavia Specialized Catalogs," was presented on June 1, 3-4pm, Room 1E11, Javits Center (during World Stamp Show NY2016). Editors of the catalogs attended. A reception/banquet followed. The catalogs and program will also be featured during the Minnesota Stamp Expo in July, Portland APS Stamp Show in August and Chicagopex in November. Välkommen!

### Hallvard Slettebo

The SCC sponsored visiting Scandinavian judge programs returns to Chicagopex, Nov. 18-20, with Norwegian Hallvard Slettebo. In addition to serving on the jury, Hallvard will present "Norway in America," along with a five-frame exhibit of the same title. He is a noted authority on Norwegian place names in America and maintains an online listing at: [www.slettebo.no/posthistorie/norvegiana.htm](http://www.slettebo.no/posthistorie/norvegiana.htm).

### Jonas Hällström

The 2017 annual meeting, less than a year away, is scheduled at Westpex, April 28-30, where Jonas Hällström will return as visiting judge. He first served in the capacity at the SCC annual meeting at St. Louis in 2009. Stockholmia 2019, an exhibition sponsored by Royal Philatelic Society London, has just been announced. It will celebrate RPSL's 150th Anniversary and be held at Stockholm's newly opened Waterfront Congress Center, May 29-June 2, 2019. The Executive Director is Jonas Hällström. He has also been honored to sign the Roll of Distinguished Philatelists in Cambridge, England, July 22, 2016. Congratulations!

### Finlandia 2017

The next major Scandinavian FEPA exhibition will be held at Tampere, May 24-28, 2017. The show celebrates 100 years of independence of the Republic of Finland, 1917-2017. Mark this now in ink on your calendar! SCC is expected to send a large delegation. ([www.finlandia2017.fi](http://www.finlandia2017.fi))

### Iceland Collectors

A visit by Icelandic Federation President, Gísli Geir Harðarson, is scheduled for 2018 at an Iceland Collectors event. Sarasota has been proposed as the venue. Stay tuned for additional information.

Jakob Arrevad, President of Danish Islandssamlarna, publishes a digital newsletter, *Islandsklubben*, in English, which he invites SCCers to download FREE from his website. To obtain the newsletter, please email Jakob at [jsa@horten.dk](mailto:jsa@horten.dk). Jakob will send you an invitation with instructions on how to use the website where collectors can download current and past issues, as well as other Icelandic philatelic resources. Here is a wealth of FREE information available to the Iceland collector!

I hope to see you at a show soon! ■

# Nordia Report

Nordia 2016 was held April 8-10 in Jyväskylä, Finland. The show came just over six months after Nordia 2015 was held in Upplands Väsby, Sweden. Show organizers were fearful their success might be impacted by having two Nordia shows so close together, but they were still able to run a successful show with 860 frames filled. The SCC contributed seven competitive exhibits plus one Juror Class exhibit.

Jyväskylä is three hours north of Helsinki, and the lakes were still frozen over but there was no snow on the streets or sidewalks and the temperatures were in the mid 40s for the entire time of the show. The Finnish people were quite friendly and the City of Jyväskylä hosted a Friday night cocktail part for the jury and exhibitors. The Saturday night Palmares Dinner featured reindeer sirloin.

Nordia 2017 will be held in Vejle, Denmark, Oct. 27-29. This will be an 18-month break between Nordia shows. The big news in Finland of course is the FIP Finlandia show to be held May 24-28, 2017, in Tampere. This promises to be the biggest show in Europe next year.

— Mike Ley

## Awards at Nordia 2016

Following are the Grand Prix awards achieved at Nordia 2016 in Jyväskylä, Finland, in April along with the awards of SCC members in the United States:

**Grand Prix Nordia:** Erkki Toivaka, *Finland 1856-1875*

**Grand Prix National:** Hannu Kauppi, *Finland M-1930 Definitive Series*

**Grand Prix Nordique:** Tom Lauridsen, *Danmarks og DWI's tofarvede frimarker*

**Grand Prix International:** Jan-Olof Ljungh, *From NDP to UPU – Letters Sent to Overseas Destinations 1868-1875*

### Large Vermeil:

Roger Quinby, *Classic Postal Cards of Finland 1871-1884*

### Vermeil:

Robert Hisey, *The First Issues of the Republic of Finland 1917-1929*

Alan Warren, *Denmark Birth Certificates: Commemorative First Day Covers 1920-1949*

### Single Frame (points awarded with medal equivalents)

Warren Grosjean, *Norway's First Postage Stamp at Work*, 83 (vermeil)

Arnold Sorensen, *Postal Uses of the Danish West Indies 1900-1905*, 81 (vermeil)

Cheryl Ganz, *Quest by Airship: The Wellman/Vaniman Expeditions*, 80 (vermeil)

Kathryn Johnson, *Money Letters Sent by Norway's Road Administration, Offentlig Sak Issues Era*, 80 (vermeil)

Mike Ley was SCC's judge/commissioner to the show and his exhibit, *Designing the 1938 King George VI Issue of Burma*, competed in the Juror Class. ■

## Letters to The Posthorn

### Swedish-Chinese Correction

From my article on this, a correction in the next *Posthorn* needs to be mentioned.

Third paragraph, Taiwan is not PRC, the show was in the PRC.

— Chuck Schmidt

Chuck, thank you. Sometimes these things slip through authors, editors and proofreaders.

— Wayne







*Nordia, from left, clockwise: frame style used at Nordia; above, exhibits at Nordia; right, Reindeer pizza; below, commissioner Mike Ley, judge Seija-Riitta Laakso and exhibitor Roger Quinby.*

---

# *When Denmark had Palm Trees: Stamps of the Danish West Indies*

*Peter Messerschmidt*



▲ *Cruz Bay, in the U.S. Virgin Islands, formerly the Danish West Indies.*

These days, St. Thomas and the U.S. Virgin Islands are a popular holiday destination. Every year, millions of people visit these tropical islands in the Caribbean, seeking sun and fun.

What many people are not aware of is that this tropical paradise used to be a Danish colony, originally annexed in 1672, eventually issuing its own postage stamps with images of the contemporaneous Danish monarchs. It has been almost 100 years since Denmark sold the islands to the United States in 1917, for the sum of US \$25 million, but quite a few “very Danish” things can still be found there, as reminders of the islands’ history.

As a kid growing up in Denmark, we briefly touched on the “Danish West Indies” in history classes, but I don’t remember much of what we learned.



However, my interest was somewhat increased as a result of collecting stamps because there were pages for this strange tropical place in my first Danish stamp album. Those pages remained largely empty for many years since I – as a child – really had no significant access to stamps from places that no longer had postal service.

That said, I developed my fascination in an unexpected place. From time time, I would go with my parents to visit my Aunt Ulla in the city of Copenhagen (we lived in a suburb outside of town). She lived in a house that had been my grandparents' and had been in the family since 1903.

As a young stamp collector, what fascinated me was all the boxes and bags of old letters and family correspondence stuffed into cabinets and drawers in less-used rooms of the house. My aunt was always quite happy for me to help her “sort things” and was always willing to let me keep a few stamps as a reward for my efforts.

To my youthful eyes, what made these explorations feel like a treasure hunt was the sheer age of all these envelopes and post cards – most of them dating to about 1905-40. And they came from many interesting places around the world. In the old days, my family was evidently very well traveled.

Along the way, I came across a great aunt and uncle's letters home from a trip around the world. Among other things, they had seen the (then) under construction Panama Canal, and they had spent Christmas in 1912 in the Danish West Indies. The stamp on the letter was actually less interesting to me than the colorful Christmas seal with the map... which sent me off to look up the islands in my Aunt's big atlas.

Looking out at our frozen Danish winters, the idea of spending Christmas on the beach with palm trees was something far outside the realm of reality!

However, that particular visit to my Aunt's house did secure me my first stamp from the Danish West Indies.

The Danish West Indies had its own (Danish) postal service and stamps from 1856 until the islands were formally conveyed to the United States on March 31, 1917.

Going purely “by the main numbers,” about 60 stamps in total were issued during the Danish years. However, because of the era and relatively primitive printing methods of the time, a wealth of varieties exist, and DWI (as many stamp collectors call the nation) has become a very popular area with specialist stamp collectors.

The islands even had their own version of the popular Danish “Bicolors” stamp issue, which offers a sub-specialty of its own. Many of the early stamps issued were basically variations of commonly used stamps in Denmark, except denominated in “cents” rather than “øre.”

Part of what makes the Danish West Indies a very popular collecting area even in 2016 – in spite of being what philately calls a “dead country” – is the fact that not a lot of stamps were issued, and yet the appeal is fairly extensive. How so?

Aside from being a collecting area in its own right, stamps



▲ 1912 Danish West Indies Christmas Seal.



▲ One of the first stamps issued by the Danish West Indies.





▲ A DWI Bicolor stamp used at St. Thomas.

of the Danish West Indies are often included if a collector is trying to build a comprehensive collection of Danish stamps. If you are working with the Danish AFA stamp catalogues, DWI is considered a subsection of Denmark. As such, there are spaces for DWI stamps in many Danish stamp albums.

At the same time, since the Danish West Indies became the U.S. Virgin Islands – a dependency of the United States – DWI stamps are also included for those building a comprehensive collection of U.S. stamps. If you pick up a copy of the US-published Scott *Specialized Catalogue of United States Stamps*, you'll find pages listing and valuing DWI stamps. And there are a LOT of stamp collectors in the United States, which means a lot of people are looking at spaces for these stamps in their albums.

Last – but certainly not least – we must also consider the specialists, previously mentioned. Specifically, those who collect the Bicolored stamps of Denmark often add the DWI versions to their collections because – technically speaking – it's all part of the same stamp series. In fact, the frames of the Danish West

Indies Bicolor stamps were printed by the same plates used for the Danish stamps. Only the central ovals are different.

Although I was always interested in the place itself, I never became much of a collector of Danish West Indies stamps. Earlier in my stamp collecting career DWI stamps were generally too expensive for my pocketbook. Later on, I had already specialized in other areas of Scandinavian philately and didn't really feel like picking up yet another area to collect.

This article was inspired by the recent discovery of a group of old Christmas Seals, "Julemærker," from the Danish West Indies, tucked in a glassine envelope in a box of random stamps. Included was the colorful 1912 issue with the map that sent me off to research this strange part of "Denmark with Palm Trees," when I was just a boy. Seeing it again brought back some old memories of a time when life seemed a lot simpler, and more innocent.

I still don't have much of a collection of Danish West Indies stamps, but at least not all the album pages are empty anymore. However, I do find myself wishing that I still had some of those old family boxes I would look through sitting in the living room, while the adults were having their drinks and conversations in other parts of the house. Unfortunately, most of those have been lost to time and numerous moves by other family members.

Thanks for reading and sharing in my little trip down memory lane!

*Peter Messerschmidt maintains The Scandinavian Stamp Specialist blog at [scanstamps.blogspot.com](http://scanstamps.blogspot.com). ■*

Online SCC Member Directory  
@ [www.scc-online.org](http://www.scc-online.org)  
Get in touch with others!



**"A Most Unlikely DWI Cover," continued from Page 2.**

the Iberian Peninsula off the coast of Spain and Portugal. In its wake, *Joaquin* left at least 34 dead and \$120 million-plus in damages, but exposed the wreckage of the long-lost Steamer *Metropolis*. The ship was dashed Jan 31, 1878, off Currituck Beach, N.C., part of the dangerous Diamond Shoals of the state's Outer Banks (just a bit north of Kitty Hawk). This wreckage – and a few bits of tattered paper – are about all that remains of the game-changing shipwreck.

Philatelically, the wreck of the *Metropolis* marked the first and perhaps only time the United States Post Office Department preprinted special Dead Letter Office Official Mail stamped envelopes (ambulance covers) to carry recovered items, as opposed to simply creating an explanatory auxiliary marking. An example of a *Metropolis* cover that recently turned up is shown nearby (along with an enlargement of the preprinted inscription). It is one of about four known covers from this wreck (virtually all are ratty). Of that number, I've seen images of three; two of those bear Feb. 23 markings from St. Thomas. One is a destination receiver, the second is a transit marking (to Barbados), also shown nearby. All were dispatched from Philadelphia, Pa., Feb. 12, 1878. No contents are known from any of them.

Connections to the Danish West Indies are strong. The *Metropolis*, which left Philadelphia Jan. 28, 1878, was loaded with railway iron, recruited railway workers and mail, bound for Para, Brazil, with a planned stop in St. Thomas, DWI. The story of the loss of this steamer, which started out life as the Civil War gunboat *USS Stars and Stripes*, is available elsewhere and is loaded with drama, including wartime engagements, refitting and enlarging, incompetence, obsolescence, bad timing, poor luck, nasty weather, the loss of 102 lives, corpse robbery, mail theft and and the complete revamping of the U.S. Lifesaving Stations system.

*The enclosed letter was recovered from the wreck of the Steamer Metropolis, lost on Currituck Beach, North Carolina, January 31, 1878.*





# International auctions in Oslo



We arrange international auctions in Oslo twice a year. Each time with a total turnover of approx. USD 1 mill. The auction catalogues feature 150-200 pages with full colour illustrations.

A complete Internet version is published 3 weeks prior to a sale. 70 to 90 % of items offered are of Scandinavian origin, but frequently important lots from a range of countries are included. So are coins & banknotes and postcards.

We invite you to take advantage of the fine opportunity to sell in one of the best markets for stamps in the world.

There is no government tax on stamp sales in Norway.

More information is to be found on **[www.germeten.no](http://www.germeten.no)**  
Mail: **[germeten@online.no](mailto:germeten@online.no)**  
Phone: **+47 22 44 19 14**

MEMBER:  
NFHF

**KJELL GERMETEN A/S**

INTERNASJONAL FILATELI FORMIDLING  
TAKSERING RÅDGIVNING

OFFENTLIGE AUKSJONER



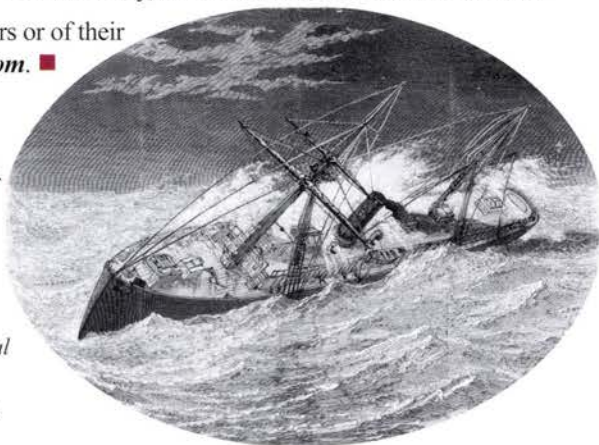
After the wreck, mail was a prime target. According to the *California Daily Alta*, "there was a very large South American mail on board, consisting principally of business; letters which had accumulated... ..mailbags were found along the beach. It is understood that registered letters receipted for by the Purser contained about \$160,000 in money-drafts... ..of eleven bags containing mail matter washed ashore, S.E. Shipp succeeded in recovering two intact, the other being used as a tobacco bag by one of the survivors. Of the contents nothing could be found, nor could anything be found of the other bags or their contents. Parties on the beach say they were cut open and rifled, and the letters, after being opened, were strewn along the beach."

Because the notation on the reverse of these ambulance covers is printed, it would suggest that there was enough mail matter recovered to warrant printing on the envelopes, yet I've seen references to no more than four covers. Where are the rest? I would like to relate the entire story, as it is known, in a future *Posthorn*.

If you have knowledge of one of these ambulance covers or of their contents, please contact the author at [wystamps@gmail.com](mailto:wystamps@gmail.com). ■

### References:

- Berthelot, Henry J., and Trosclair, Ron C., "The Wreck of the Metropolis: A Maritime Postal History," *LaPosta*, July 1990, pp 7-12.
- Daily Alta, Alta, Calif., Feb. 3, 1878.
- Farb, Roderick M., *Shipwrecks* (1985).
- Frank Leslie's Illustrated Newspaper*, Feb. 23, 1878.
- Gentile, Gary, *Shipwrecks of North Carolina* (1993)
- Means, Dennis R., "The Wreck of the *Metropolis*,"
- Mobley, Joe A., *Ship Ashore!: The U.S. Lifesavers of Coastal North Carolina* (1994)
- Prologue: Journal of the National Archives* (date unknown).



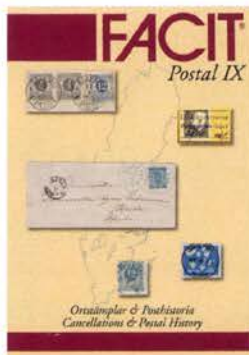
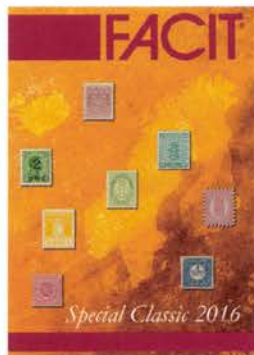
## FREE CATALOG

New members receive a catalog of their choice (see below) with a three-year prepaid membership. US/Canada addresses only.

Look for this logo and visit our booth at NY2016, APS Stamp Show, Minnesota Stamp Expo and Chicagopex.

Scandinavian Collectors Club, Box 16213, St. Paul, MN 55116

[www.scc-online.org](http://www.scc-online.org)



International stamp auctions

# ENGERS frimerker

Klundbyvn. 103, N-2836 Biri, Norway. Tel.: 61 18 15 55. Telefax: 61 18 17 37. e-mail: post@engers-frimerker.no

## YOUR PARTNER IN BUYING AND SELLING



Our international profile and trust bring exciting material to our auctions in Oslo every spring and autumn.

Great philatelic knowledge, 50 years of experience and our own authorized expert for Norway, as well as the best contacts within international expertizing give you the best guarantee for serious treatment and maximum profit from your consignment.

## WELCOME !

For detailed information, price lists, agenda, latest auction catalogue etc. visit our homepage:

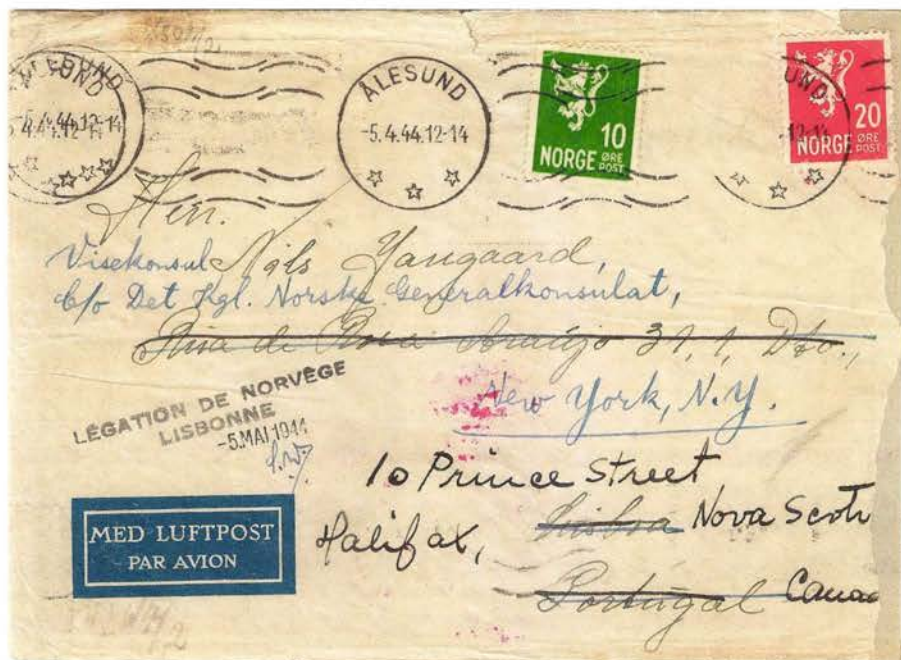
[www.engers-frimerker.no](http://www.engers-frimerker.no)



# The Story of a WWII Norwegian Undercover Address in Lisbon

Ed Fraser

Thanks to Peter Jangaard, who back in 2005 put together a quite amazing postal history “exhibit” as a 168-page book, the story of this one Lisbon address can be illustrated. His privately printed book (and also CD) is titled *Mail Censorship and Postal History 1935-1948*. It is based on his family’s correspondence and uses close to 150 covers – especially his father’s – over that period. It has been very well done, considering that, excepting for some minimal text on some postcards, apparently none of the cover contents survived. The book has appropriately won various philatelic awards, and I would guess because of its variety is a near-unique creation within the World War II Postal History realm.



◀ **Figure 1.** Cover from Norway, addressed to the undercover address, Rua de Rosa Araujo, 31, 1, Dto in Lisbon, Portugal. Cover here is from Alesund (Aalesund), Norway, and is dated April 5, 1944. Also note manuscript initials “S.W.” for Sigvald Wiborg under the “-5 MAI 1944” handstamp. He managed this Lisbon undercover service.

▶ **Figure 2.** The back of the Figure 1 cover, showing German censorship in Berlin, and a Lisbon receiving cancel dated May 4, 1944.

The story perhaps is best told by excerpting from pages 98 and 99 of Peter Jangaard’s book:



*Save the date*

# INTERNATIONAL AUCTIONS 2016



## SPECIAL AUCTION IN NEW YORK

May 30, 2016 / *worldwide rarities*

## 34<sup>th</sup> AUCTION

June 10 - 11, 2016 / *coins & banknotes*

June 13 - 17, 2016 / *philately & picture postcards*

## 35<sup>th</sup> AUCTION

October 10 - 15, 2016 / *philately & picture postcards*

October 19 - 20, 2016 / *coins & banknotes*

*Closing date for consignments: August 10, 2016*



*Consign or sell now!*

**CONSIGNMENT & OUTRIGHT PURCHASE at any time**

*\* Finder's fee for agents guaranteed*

***Our associated company partners based in the United States can always visit you personally.***

*"For exotic or unusual stamps, covers, coins, paper money and collections I am your passionate reliable partner to contact."*

*Christoph Gärtner*



*Auktionshaus Christoph Gärtner*

Steinbeisstr. 6+8 / 74321 Bietigheim-Bissingen, Germany / Tel. +49-(0)7142-789400  
Fax. +49-(0)7142-789410 / [info@auktionen-gaertner.de](mailto:info@auktionen-gaertner.de) / [www.auktionen-gaertner.de](http://www.auktionen-gaertner.de)

**C.G.**



*“The ‘Secret’ Norwegian Post Office in Lisbon, Portugal:*

*“Starting in February-March 1942 all letters to and from Norway and [my father] Nils Jangaard in Halifax were routed through an address in Lisbon ‘Rua de Rosa Araujo, 31, I, Dto.’ This address was one of several addresses used by the Norwegian Legation for transmitting mail to and from Norwegians abroad.*

*“The operation of this undercover post office was described by Svein Andreassen in his book, NORGE. Postveier og sensur under den andre verdenskrig (NORWAY. Mail routes and censorship during the Second World War), published by Norsk Filatelistforbund og Filatelistisk Forlag, A/S, Bergen 1995. (ISBN 82-90272 56-1).*

The following is a translation of part of this chapter from Jangaard’s book [from page 158].

*“5.3 - Mail forwarding through the Legation in Lisbon.*

*“Several Norwegian offices abroad were actively forwarding letters and notes between Norwegians home and abroad. One of these was the Norwegian Legation in neutral Portugal that can serve as a practical example of the various activities at many Norwegian legations. A card index with addresses and aliases was established as early as the end of 1940.*

*“Lisbon was centrally located in the middle of the mail stream between USA and Europe. From Lisbon the mail routes continued into German-occupied Europe. At the airport at Sintra outside Lisbon planes from the warring countries England and Germany were sitting side by side with planes from Italy, Spain and Portugal. At the mouth of the river Tejo the large American Clipper flying boats were anchored. The British had an extensive air traffic with Lisbon both with sea planes and ordinary land planes. Deutsche Lufthansa also had a route to Lisbon from Berlin. Airmail letters from Norway would be carried by this route after the German occupation.*

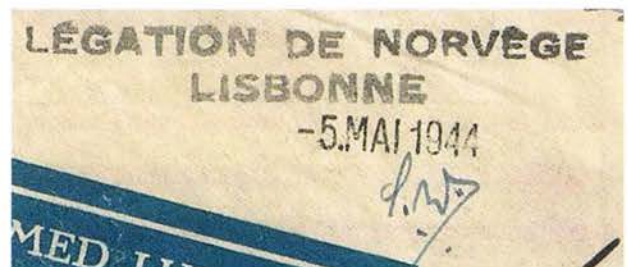
*“The card index at the legation contained 430 names and was established and maintained by Sigvald Wiborg. He had been employed at the legation since the middle 1930’s. The index contained addresses of Norwegians abroad and their closest relatives in Norway. Many well known Norwegians abroad had aliases since their real names could not be used in mail from occupied Norway, including several members of the Norwegian government in exile in London.*

*“In addition to the use of aliases, a number of ‘innocent’ addresses were used. The Legation’s address in Rua Alvares Cabral could not be used since the German censorship office in Frankfurt knew that address very well.*

Wiborg has, in a letter to the author, explained how he managed the letter office at the legation:

*“The letters addressed to Lisbon had different addresses, including my home address. My name was of course not included in the address. I often changed addresses and would also use my father’s address or that of his office. Letters from England (and Canada) were often addressed to the Legation where we transferred the letters to neutral envelopes and sent them on. I bought envelopes of different sizes for the letters going to Norway.”*

[A cover to and a cover from this Lisbon address are shown on page 99, and also are shown in the Andreassen book.]



► **Figure 3. “S.W.” Initials of Sigvald Wiborg.**



Figure 4. Another example with Berlin censorship, postmarked Sept. 28, 1943, Romsdals Posteksp and backstamped Oct. 10, 1943, in Lisbon, showing the full 60-øre airmail franking. Missing are the Lisbon Ligation handstamp, dating and any initials, although it still appears to have been delivered from Lisbon outside of the mails, especially since there is no indication of further censoring – U.S., British or Canadian.

## SCC Member Services & Contacts

Stamp Mart (USA)	Viggo Warmboe, 2740 FoxgateDr. Minnetonka MN 55305	viggo62@comcast.net
Stamp Mart (Canada)	Roger Fontaine, 9 Rochester Ave. Winnipeg, MB,R3T 3V6, Canada	stampman@mts.net
Website (www.scc-online.org)	Christopher Dahle, 1401 Lindmar Dr NE Cedar Rapids IA 52402-3724	chris-dahle@fastermac.net
Membership Inquiries	Steve Lund, PO Box 16213, St. Paul MN 55116	steve88h@aol.com
Local Chapters	See list in <i>The Posthorn</i>	See list in <i>The Posthorn</i>
Helpers' List/ Traders' List	George Kuhhorn, PO Box 4486, Emerald Isle NC 28594	geostamps@hotmail.com
Complimentary Classified Ads	Wayne L. Youngblood, 4615 Lindell Blvd Apt 1102, St. Louis MO 63108	wystamps@gmail.com
Library Services	Paul Albright, 4615 Hampshire St., Boulder CO 80301-4210	palbright@wiche.edu
Study Groups	See list in <i>The Posthorn</i>	See list in <i>The Posthorn</i>





Figure 4a. The reverse side of the Figure 4 cover.

## **SCC and Scandinavian Show Calendar**

### **2016**

**APS StampShow (SCC booth and dinner), Aug. 4-7, Portland, Ore.**

**Chicagopex (SCC National Meeting), Nov. 18-20, Itasca, Ill**

### **2017**

**Westpex (SCC National Meeting), April 28-30, San Francisco, Calif.**

**Finlandia 2017 FIP exhibition, May 24-28, Tampere, Finland**

**APS StampShow (SCC booth and dinner), Aug. 3-6, Richmond, Va.**

**Nordia 2017, Oct. 27-29, Vejle, Denmark**

### **2018**

**Rocky Mountain Stamp Show (SCC National Meeting), May 11-13, Denver, Colo.**

**APS StampShow (SCC booth and dinner), Aug. 2-5, Columbus, Ohio**

**Nordia 2018, Iceland**

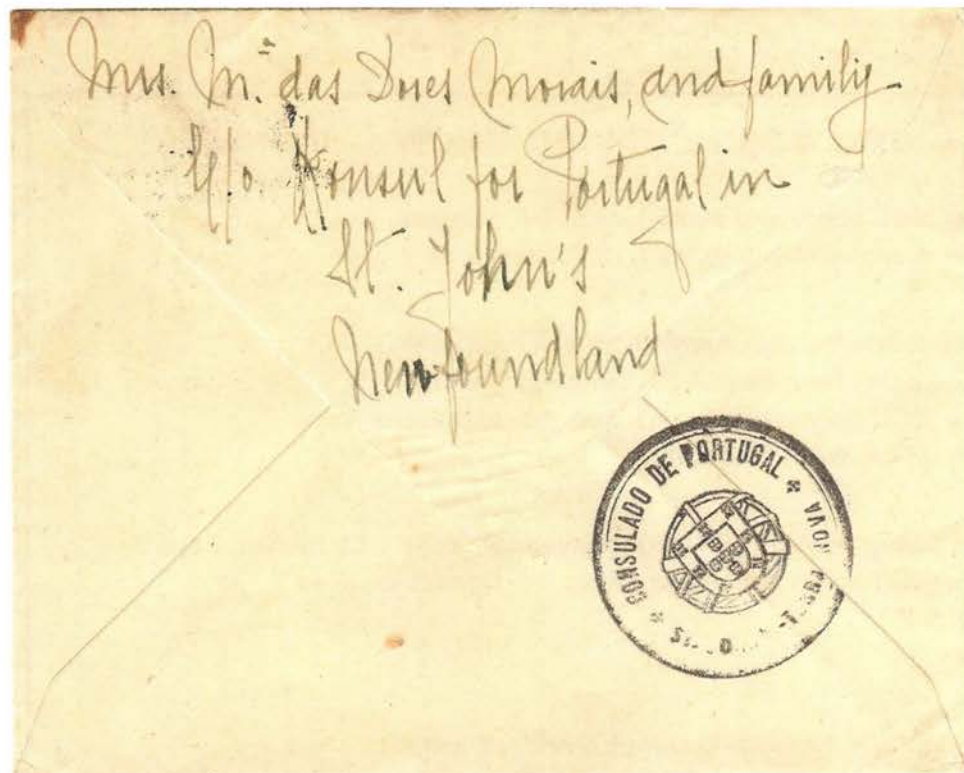
### **2019**

**Nordia 2019, Norway**

**Seapex, September (SCC National Meeting), Seattle, Wash.**



◀ Figure 5. Con-sular mail perhaps went inside envelopes sent by regular mail that was censored, or there were other censorship agreements on what was considered "civilian mail" that legations handled. That is, perhaps, the reason this unrelated Portuguese cover from the same correspondence shows Newfoundland "DC/3" censorship – but no Newfoundland franking or postal markings – thus making the front of the cover seem quite extraordinary, looking to be "Portugal to Newfoundland to Norway" (which it is not). The cover appears to have been passed unopened by German censorship.



◀ Figure 6. The back of the Figure 5 cover, with the Newfoundland return address and, apparently, the cachet handstamp of the Portuguese Consulate in St Johns(?).



---

► **Figure 7. The DC/3 mark (from the Figure 5 cover) was assigned to censorship in Newfoundland.**

The cover shown in Figures 1-3 has interesting additional routing indicated – apparently all via consulate mail outside of regular mail and censorship channels. Although re-addressed to Halifax, Nova Scotia, and from there re-addressed to the Consulate in New York City, there are no postal or censorship markings from the United States or Canada. (Apparently a 15-øre [or more] stamp has come off, needed for the 45-øre [or more] air mail rate from Norway to Portugal.) In fact, without knowing from other information that Nils Jangaard had moved from Canada to the Consulate in New York, it would be hard to figure out the travel sequence of this cover without more postmark datings. Here the cover in Figure 4 suggests that it just went to Canada and is not annotated for further forwarding. That is apparently correct – in fact, Peter Jangaard states that toward the end of 1943 his father was assigned to work in New York City, so we can expect that this cover was not forwarded further. [Later, in June 1944, he was re-assigned to work at the Embassy in Washington, D.C.]



Another known Nils Jangaard cover, coincidentally after his June 1944 move, and mailed to him from Aalesund (postmarked Aug. 7, 1944, was censored in Berlin, but returned annotated “reason enclosed.” That enclosed slip has apparently not survived. One reason Peter Jangaard notes is that the Allied invasion after June 1944 had broken mail links to Portugal. My thought, without seeing the lost slip, is that perhaps it said – as various German censor slips did – the letter was returned as communication with an enemy country via a neutral country, including Portugal, was strictly forbidden. After all, it does seem unlikely that an undercover address used by hundreds of people would not be noticed by someone in German censorship. Examples of German censor-returned Norwegian mail because of an undercover address for the addressee are likely quite unusual, although they have been reported. For reference, I would be glad to know of any covers or images of covers readers might encounter.

### Epilogue!

Of that card file Sigvald Wiborg stated contains 430 names, why are only a few (at most) perhaps Jangaard family connected? So, aside from the story of the covers involving Nils Jangaard related here, where are examples from some of the other 400-plus names that used this Norwegian undercover mail scheme? This is definitely something to look for! ■

### Other References:

1. “From “Klippfisk” to Diplomacy – A Norwegian Businessman’s Experiences in WWII” [starting with the Jangaard brothers’ “klippfisk” or “salted and dried cod” export business], by Peter M. Jangaard. This article appeared in the *Norwegian War and Field Post Journal*, March 2006, pages 5-12 [in English] [This magazine, also called *Tidsskrift for Krigs- og Feltpost*, contains articles in Norwegian and some in English.] Peter Jangaard gives a good overview and biography relating to this mail, including the various addresses used.

Comments & additional information are greatly appreciated. Please address to [edfraser@gmail.com](mailto:edfraser@gmail.com).

---

### Article-related Member-to-Member Ad:

There may be a few copies of Peter Jangaard’s book, in English, either in CD or book form in color, or book form in B&W, still available. Contact [edfraser@gmail.com](mailto:edfraser@gmail.com) for price & postage.

## Finlandia 2017

The next FIP-recognized international exhibition in Finland will be the Finlandia show, to be held in Tampere, May 24-28, 2017. The show has the patronage of the Federation of European Philatelic Associations (FEPA). Thus all FEPA countries can participate, as well as exhibitors in Australia and the United States.



EUROPEAN STAMP EXHIBITION

# FINLANDIA 2017

TAMPERE 24.-28.5.

The show expects to feature 2,200 frames. Interest is keen in the event as it commemorates the 100th anniversary of the 1917 independence of Finland. In addition to the usual competitive classes, postcards will be accepted competitively for the first time at a FEPA show. Tampere is accessible by plane and is a two-hour train ride from Helsinki.

Visitors to the show will be able to ride an old postbus to the Postal Museum. The official show hotel is the Scandic Tampere City hotel, next to the central train station and within walking distance of the show venue, Tampere Hall. The show website, [www.finlandia2017.fi](http://www.finlandia2017.fi), has further details, in both Finnish and English. Subscriptions to receive future newsletters from the show committee can be arranged at the website.

Although the deadline for exhibits has already passed, Steve Schumann is the U.S. commissioner to the show. He can be reached at [sdsch@earthlink.net](mailto:sdsch@earthlink.net). The chairman of the organizing committee is Jukka Mäkinen. Chairing the Communications Team is Jukka Mäkipää, and the Finance Team head is Risto Pitkänen. The Commissioner General is Raino Heino.

Country commissioners are Ebbe Eldrup (Denmark), Risto Pitkänen (Finland), Gisli Geir Hardarson (Iceland), Hallvard Slettebø (Norway), Fredrik Ydell (Sweden) and, as previously mentioned, Steve Schumann (United States). ■

## Finland: A Correction

To the February 2016 *Posthorn* article, "What an author never wants to have happen - The forgery that is possibly genuine!"

*Ed Fraser*

In discussing the complications and opinions of identifying early ink cancels on Finnish stamps, the familiar double-crossed lines type is typically identified to Tammerfors and, sometimes, to Lovisa and Borgå – but without also having the town cancel present, more thought can be given to the possible identification.

In particular, Karis was shown to be a possible identification, and even Fredrikshamn and Helsingfors could be candidates. Additionally, Kaskö was identified for the center stamp in Figure 7, but this was not a trick to check our reader's alertness. It was a total mistake, only realized when reading the final article. The correct cancel identification should read "IKALIS." The two town cancels are compared below, from the Gummesson-Ossa-Stenberg book, *The Early Postmarks of Finland*, copyright 1974, pages 47 and 61.

Please contact Ed Fraser, 195 Marine St, Farmingdale NY 11735, or by email at the following address: [edfraser@gmail.com](mailto:edfraser@gmail.com). ■

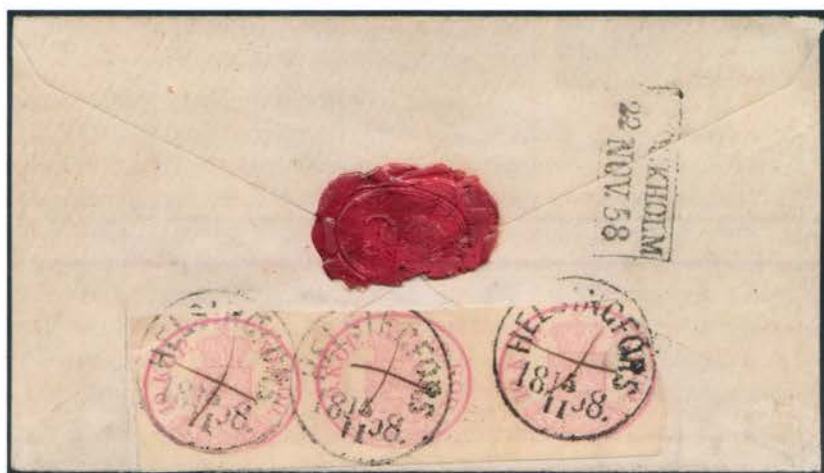


▲ The right stamp above was identified as having a postmark from Kaskö (below left). The postmark actually reads IKASKO" (BELOW RIGHT).





# Consign to our auction in Helsinki 14. – 15.10.2016



## HELLMAN AUCTIONS LTD



PL 5 • FI-20251 TURKU, FINLAND • TEL. +358 2 254 7200

[WWW.FILATELIAPALVELU.COM](http://WWW.FILATELIAPALVELU.COM)



## **LAPE 2012, Finland Special Stamp Catalog, Part 1**

LAPE 2012, Finland Special Stamp Catalog, Part 1, *Tatu Untinen, editor-in-chief*. 400 pages, 6¾ by 9¾ inches, perfect bound, card covers. Philatelic Service of Finland, Turku, Finland, 2012, ISSN 1797-0644. Available through Scandinavian Collectors Club.

In recent years Finland's *LAPE Stamp Catalog* was published in two versions. "Little LAPE" was a smaller-sized, 300-page non-specialized, inexpensive catalog for general Finland collectors. "Fat LAPE" had about 900 larger pages with varieties and postal history for the specialized collector and cost more. Indeed, in 2012 "Fat LAPE" became so fat that Editor Tatu Untinen divided it into two parts. Volume 1 comprises pre-philately up to the 1930 issues. Volume 2 includes commemorative and charity stamps, as well as more recent definitive issues. The recent trend to "classic specialized" smaller-volume catalogs has proved *LAPE 2012, Finland Special Stamp Catalog, Part 1* ahead of its time. This review reconsiders it as the "stand alone" specialized catalog of classic Finnish philately.



The level of color graphics is superior and the user will note the similarities to Hellman Auction catalogs. Part 1 begins with reproductions of maps showing early Finnish postal routes and continues with numerous color copies of covers of all issues. Color identification guides are included for all issues in the 1875-82 series. Collectors will appreciate the minute color graduations shown with fine clarity. *LAPE 2012* represents the pinnacle of graphics in philatelic catalogs.

For the collector of the Four Figured Stamp Issues of 1875 this is the most extensive source available. The numbering system used by LAPE, based on early Helsingfors (Helsinki) Stamp Society catalogs, considers that the issues had two different Finnish printers (in addition to 1875 Copenhagen printing), underwent numerous changes in perforating devices and lists all different color varieties. Although other catalogs use a compatible cataloging system, none have the specialty of *LAPE 2012, Part 1*, which even lists the dates that the various printings were released by the post office. Sometimes a clear cancel can – in itself – be a certificate attesting to a stamp's printing and color. Prior to each major issue is an article with specifics about it, including forgeries. Texts are in Finnish, English and Swedish. Following each major issue is a letter register listing known frankings for both domestic and foreign usages along with retail values. All values are notated in euros.

*LAPE 2012, Part 1* contains a listing of the cancels used in Finland prior to 1891, including one-row cancels, low and high box cancels, large and small single-ring cancels, small two-ring cancels and Finland cancels with retail values based on usage on postal cards. The integration of the stamps (along with varieties), cancels and covers provide the user with a larger perspective of Finnish philately.

Other traditional Finnish collecting areas included are bus parcel stamps, field post, Karelia, North Ingermanland, Christmas seals, Helsinki and Tampere local posts, state railways, revenue stamps, perfins and postal stationery. Concluding with a 14-page listing of Finnish postal rates, *LAPE 2012, Part 1* is the most extensive one-volume catalog of classic Finland philately and belongs in every Finnish specialist's library.

— Steve Lund



## Excellence in Philately: The Indriði Pálsson

### Large Gold Medal Collection of Classic Iceland

Excellence in Philately: The Indriði Pálsson Large Gold Medal Collection of Classic Iceland, *Claes Arnrup*, editor, 144 pages, 8¼ by 11¾ inches, casebound, Postiljonen, Malmö, Sweden, 2016, €60 plus shipping from Postiljonen AB, Box 537, 20125 Malmö, Sweden, or online from [www.postiljonen.com](http://www.postiljonen.com).

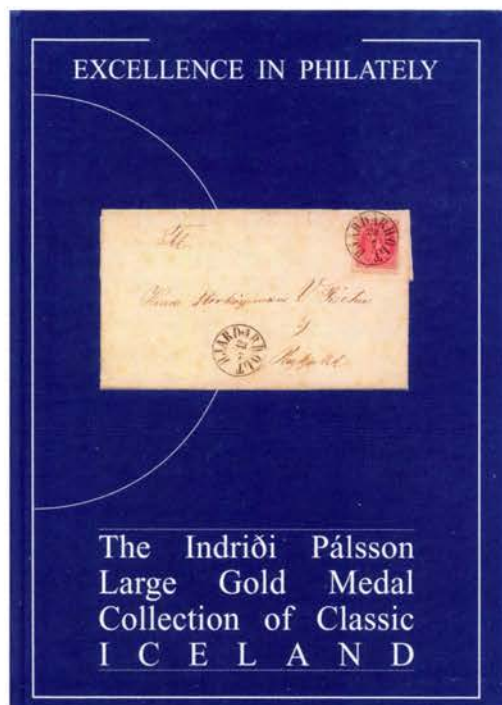
Before its auction sale of this outstanding collection of Iceland, Postiljonen had the foresight to preserve it in book form so that future students of these issues have a great resource. Árni Gústafsson offers a brief memorial tribute to the late collector, emphasizing Pálsson's passion for obtaining the best quality material and authenticating and confirming all the details of each item in his collection.

The period covered is from the pre-stamp period of the 19th century up to 1902. The book begins with half a dozen folded letters from 1836-60, many of extreme rarity. The stamp issues begin with Danish adhesives in 1870-72 bearing numeral cancels 236 and 237. The skilling issues of Iceland of 1873-76 are shown in proofs, various papers, inverted watermarks, major varieties and many with beautifully struck town cancellations, followed by some rare uses on cover. Multiples are also shown with sheet positions identified.

The 1876-1902 aur issues are treated in similar fashion, with stunning examples on covers and with town cancels. Many of the postmarked issues are grouped by type of cancel: Roman, Egyptian, Bridge, followed by Danish cancels, seapost uses, foreign cancellations and crown and posthorn markings. The collection ends up with studies of the ÞRÍR surcharges and Í GILDI overprints, including the main types and errors on these issues.

The book is limited to an edition of only 150 copies. Serious collectors of classic Iceland are advised to order a copy of this extraordinary keepsake. ■

— Alan Warren



### Need Help? Try SCC's Helper's Service

SCC is one of the few collector societies to provide a standing group of expert volunteers who are capable of answering most any question you may have on Scandinavian material. The SCC's Helper's List now has the final translator that was needed (Norwegian) thanks to a friend, Vincent Abate, who was kind enough to volunteer.

The idea of having an information center was born several years ago. Contacts were made with known specialists from within the club. Not one person refused to join in.

The system works as follows: contact me via email ([geostamps@hotmail.com](mailto:geostamps@hotmail.com)) or at PO Box 4486, Emerald Isle NC 28594, with your question. I will contact the appropriate specialist with your request. So far this system has worked well for everyone. There is so much knowledge available, so feel free to ask. The price is right too – it is included in your dues. So, get your money's worth! – *George Kuhhorn, Helper/Trader list coordinator*

# Auction Marketplace

Frank Banke



## Postiljonen No. 211, Malmö, Sweden. March 18-19, 2016.

Classic Iceland – certain to be one of the highlights in Scandinavian philately in 2016, was the focus of Part I of Indridi Pálsson's collection. A fine name-sale catalog with 207 lots presented the first part of this fantastic Iceland collection. If every auction participant assumed that he or she would go home with several items from this great collection, they were disappointed. Telephone bids turned out to be a great competitor to the bidders that turned up in the auction room, and their participation brought the prices to a level that hasn't been seen for a long time in Iceland philately. Many items from this collection have been off the philatelic market for as much as 30-50 years.

Two of the famous skilling covers went on sale. Lot 2025, a 4 sk. 1873 (Facit 2) on cover from Hjarðarholt to Reykjavik, was estimated at \$56,000. Bidding ended at \$126,000, the highest price ever paid for a 4-skilling cover. The winner in this sale, Lot 2032, a 16 sk. 1873 (Facit 3) on cover – and the only known perf 14 by



▲ Lot 2025.



◀ Lot 2032.

13½ on cover – started at \$70,000, but bidding ended at \$182,000. Both covers were on display in an Iceland collection exhibited at the NY2016 show. A used pair of the 2 sk. 1873 (Facit 1) on a small piece, Lot 2020, sold for \$12,600, against an estimate of \$4,200. A postal stationery lot, No. 2046, a 5 aur (Facit BK1), uprated with a 5-aur blue, perf 14 by 13½ (Facit 9), canceled on the first day of use of the 5 aur stationery, sold for \$49,000, taking off from the \$14,000 opening, likely the most important piece of Icelandic stationery known. A 20-aur pale violet (Facit 14a) on C.O.D. Danish form sent to Denmark, Lot 2082, sold for \$17,500 against the estimate of \$7,000. The same stamp, but the violet shade (Facit 14b) on cover to the United States, Lot 2083, sold for \$24,000, against an estimate of \$10,000. One of the scarcest "I GILDI



► **Lot 2046.**

overprint," a 25-aur black overprint, hinged (Facit 56, Lot 2171), sold for \$12,000. A similar stamp, but the readable 25-aur red overprint (Facit 62), with two copies on cover to Denmark, sold for \$4,100, starting at \$1,000.

The main catalog offered a section of fine Danish West Indies stamps, especially a mint never hinged "14 CENTS" block of 16 with inverted frame

position 18 (Facit 12, 12v1), which sold for \$21,000, as Lot 190. A five-strip of 2 FRANCS St. Thomas Harbor (Facit 39v2), mint never hinged, and with imperforate left margin and double vertical perforations in two places, sold for \$4,100, after starting at \$1,000. A fascinating Finnish cover, a 32 penni (Facit 18) strip of 10 with gutter, Lot 260 – off the market for many years – was offered for \$35,000 and sold for that price. ■



▲ **Lot 260.**

Roger Cichorz

# When Art and Its Adaptation for Stamp Design Collide...



Perhaps this discussion may only be appreciated by topical/thematic collectors who scour references in search of supporting information about minutia of stamp designs. “RP” in Minnesota inquired about the design of Finland’s 1¼ mark stamp in the set of three 1935 issue for the Centenary of Finland’s national epic Kalevala (Facit No. 195, Scott 201). The question relates to the stylized design of this stamp that shows two (apparently clothed) men in the foreground, a hearth in the background and – above it – a series of wavy (or zig-zag) lines.

Facit indicates the design is adapted from a fresco by Akseli Gallen-Kallela from Kalevala titled *Två runosångare i bastun / Two Rune reciters in the Sauna*. Scott simply labels the design “Bards Reciting the ‘Kalevala’” and the specialized Finnish *Norma* and *LAPE* catalogs likewise reference only rune singers, without specifying their location. Kalevala does not reference a sauna, and Gallen-Kallela’s art in this instance is based on passages from this epic. Furthermore, the Swedish word “bastun” can mean either a sauna or Turkish bath, the latter distinguished by a focus on water, as distinct from the sauna’s ambient steam. The question then is, are these two bards depicted in a sauna as the description in the Facit catalog indicates? We conclude not! Read on.

RP conducted considerable research on text in the Kalevala and on Gallen-Kallela’s titled artworks but found no reference to bards in a sauna. She did find, however, a depiction of the actual fresco on which the stamp design is based in a 1922 edition of the Kalevala with Gallen-Kallela’s original version of the paintings (Kalevala, Werner Soderstrom Oy, Porvoo, Finland, 1922). The wavy lines in the background of the stamp design are apparently absent in the fresco painting and had been added by the stamp designer (Jorma Gallen-Kallela, Akseli’s artist son), presumably just to fill out the background, or to represent walls of the building or, less likely, to represent smoke from the fireplace. Carl Pelander in his 1940 booklet titled *The Postal Issues of Finland* (available for loan from SCCL as FIN B44E) states that Jorma made modifications for the stamp, but provides no further information. Pelander refers to the part early on in the poem, “Let us clasp our hands together / Let us interlock our fingers...” This passage is also cited in the description of the stamp given in the *Norma* catalog.

RP asked me to participate in this quest, primarily to serve as a sanity check of the information provided. I perused various editions of the Finnish stamp catalogs and books on Finnish stamp designs at the SCCL and did Google searches on the Internet, but I drew a blank on the specifics of the stamp design, such as whether it depicts a sauna and on the actual title of the Gallen-Kallela fresco. RP speculated that the design is that of an interior of a house living room with a burning fireplace. She stated that John I. Kolehmainen, a well-respected and prolific author, has written a book on the Kalevala titled *Epic of the North* (Northwestern Publishing Co., New York Mills, MN, 1973) and, in a lengthy chapter on rune singers, Kolehmainen lists a number of places and venues where folk poetry was sung, according to collectors of the poetry. A sauna or bath house is not listed, but in the same chapter there is a photo of the interior of a Karelian peasant dwelling with its raised hearth and a wood box next to it. In that same chapter is a drawing of two rune singers in a house, not a sauna!

As stated before, the rune singers in the stamp design appear to be fully clothed. So, we rest our case and conclude that Facit’s mention of a “bastun” is incorrect and the scene takes place in a rural house. Additional information, contrary or supporting, is welcome, so please contact me. Incidentally, during the process of investigating this stamp, I noted an error in Facit as No. 195 is listed as having a “1½



---

mark” denomination when it is actually 1¼ mark! So mistakes and misinformation occasionally occur even in the best of stamp catalogs.

### **A Review of Sorts of DFBK’s 2011 *Danish Railway Stamps Catalogue...***

Necessity is sometimes the mother of invention... In December 2015 SCCL received a substantial donation from Charles Peterson that included three lots of Danish railway stamps. He dutifully had summarized the stamps by their rarity factors price index cited in the 2011 edition of *Katalog over Danmarks Jernbane Frimærker (Catalogue of the Railway Stamps of Denmark)*, published by the Dansk Fragt-og Banemærkeklub (DFBK). When I attempted to determine the valuations (i.e., convert the rarity factors to a dollar amount equivalent) of these railway stamps, I found that SCCL had only a photocopy of the first half of the pages in DFBK’s 1998 edition. Further, SCCL’s only other priced reference to these stamps was the 1966 edition of the same title, by Reinhold Jensen and P. Thomassen (available for loan from SCCL as DEN B211D).

Although the 1966 “Jensen” was useful in illustrating, listing, and assigning catalog numbers (mostly retained and expanded upon for post-1965 issues in the DFBK editions), its pricing is woefully outdated. Temporarily stymied at being able to properly evaluate and price the three lots, I suggested to Paul Albright that SCCL’s purchase of DFBK’s 2011 edition was a necessity and would literally pay for itself with the sales of these stamp lots in a future SCCL auction. We ordered and promptly received the DFBK 2011 edition (available for loan from SCCL as DEN B212D), and it replaced the incomplete photocopied “DFBK 1998” pages.

As expected, the “DFBK 2011” listings greatly evolved and expanded since “Jensen” was published in 1966. “Jensen” is a 6- by 8¼-inch softbound publication of 164 pages that illustrates, lists and values the then-known Danish railway stamps and varieties issued from 1865-1965. By contrast, “DFBK 2011” is a 2½-inch-wide, four-ring custom binder containing ix + 472 (printed double sided) 8¼- by 11¼-inch pages that illustrate, list and value all of the issues of the 106 Danish state railways and private railway companies, including parcel stamps, express stamps, newspaper stamps, postage labels, tape parcel stamps, courier stamps, COD stamps, charge stamps and luggage stamps. In addition to the basic stamps, numerous printing varieties are also listed and valued, and illustrations (unfortunately) are in black-and-white. Although the text is entirely in Danish (except for a one-page English introduction), because the listings are alphabetically arranged by railway name and numbers appear chronologically in catalog format, use should not present any problems to English-only readers.

Since the publication of its 2011 edition, DFBK has issued three sets of supplementary corrections and addenda comprising some 60 pages with the illustrations all in color. I hope that when DFBK publishes its future catalog edition incorporating these corrections and addenda listings, it will be entirely in color. Incidentally, these three sets of supplementary pages can be accessed on-line for viewing, respectively, at [dfbk.dk/jernbane/afsnit1.pdf](http://dfbk.dk/jernbane/afsnit1.pdf) (and [...afsnit2.pdf](http://dfbk.dk/jernbane/afsnit2.pdf) & [...afsnit3.pdf](http://dfbk.dk/jernbane/afsnit3.pdf)). The three sets of supplement pages have been printed and added to SCCL’s “DFBK 2011” (DEN B212D).

Most significantly, in 2014 DFBK increased each of the valuations on the rarity factor price index ranges in most instances to about double what they had been previously in 2011! These increases in valuations likely reflect the lack of availability versus the demand for these railway stamps and are indicative of the popularity among Denmark collectors today for this type of Cinderella “back-of-the-book” material. However, with the ongoing, thorough research by DFBK members that has been incorporated into the extensive and comprehensive “DFBK 2011” and successive sets of supplements, one might be hard-pressed at present to term these Danish state and private railway issues Cinderellas!

If you are interested in purchasing your own personal copy of this catalog, details and an order form in English are available online at [www.fragtmaerker.dk/Salgsfolder%20katalog%20engelsk.pdf](http://www.fragtmaerker.dk/Salgsfolder%20katalog%20engelsk.pdf).

I encourage your comments about the content of this column and any questions you have about the SCCL and its operations. Also, your suggestions for future column topics are always welcome. Please do not hesitate to contact me via email at [rcichorz@comcast.net](mailto:rcichorz@comcast.net), USPS mail at Roger Cichorz, 3925 Longwood Ave, Boulder CO 80305-7233, USA, or by telephone (303) 494-8361. ■

---

# Member Advertisements

**Wanted:** Information about maxicards produced by the Greenland Post Office 1981-2010. Any help would be appreciated. Is there a list of how many maxicards were sold by the Greenland Post Office from 1999-2010 by stamp issue? I have been able to find the numbers for 1981-98. Why were only 200 of the May 21, 1981, FDC Codfish maxicards (DAKA M01 - SC#140) produced? The Greenland Post Office produced postcards numbered 1/86, 2/86 and 3/86. Were they ever made into maxicards? Is there a description of the pictorial elements of the first-day cancels used by the Greenland Post Office from 1981-2010? Some of the elements are somewhat obscure like the dog(?) made out of dried fish! Jack Andersen, Box 6241, Champaign IL 61826, [maddogja@sbcglobal.net](mailto:maddogja@sbcglobal.net).



**Available:** *The Icelandic Numeral Cancellations* on CD, for printing your own sheets. Information on the CD will be in Swedish, Icelandic, English and German. *The Icelandic Numeral Cancellations* can be ordered on CD, price SEK 250, including postage or \$30US, including postage. This gives you the opportunity to print your own. Order from [alltinget@telia.com](mailto:alltinget@telia.com) by PayPal, or snail mail Leif Nilsson Örnvägen 12 S-76194 Norrtälje, Sweden



**Wanted:** Help in locating privately bound (blue hardcover) book of the Carl Pelander Auction Catalogs for the 1940-44 period. This included some catalogs offering some Fabergé material. They were last seen in Finland, may have been lost in the mails back to me and may have later been auctioned in a Finnish Hellman mail sale in 2012 (The mail sale records were not saved). My name should be in pencil on the front inside cover. I would be most interested to at least get a copy of them. I still have the 1945-51 bound volumes. Ed Fraser, 195 Marine St, Farmingdale NY 11735, [edfraser@gmail.com](mailto:edfraser@gmail.com).



**Available:** *Postal Censorship in Finland 1914-1918* (2015 edition), compiled and edited by Roger P. Quinby, CD only, 400+ pages, pdf color, \$30 postpaid in USA and Canada, \$40 or €40 elsewhere. [rpquinby@aol.com](mailto:rpquinby@aol.com) or 12425 Dancliff Trce, Alpharetta GA 30009-8756.



**Wanted:** Mail using, or items related to using, the Thomas Cook undercover mail schemes during both WWI or WWII. Reference copies also appreciated. Ed Fraser, [edfraser@gmail.com](mailto:edfraser@gmail.com), or 195 Marine St, Farmingdale NY 11735.



**Wanted:** Danish West Indies Printed Matter: King Christian XI local letter, King Christian X foreign letter, Coat of Arms Local Letter, and postal stationery cards with advertisements. Also 1917 Transition Period Letters. Arnold Sorensen, 7666 Edgedale Dr, Newburgh IN 47630, [valbydwi@hotmail.com](mailto:valbydwi@hotmail.com).



**Wanted:** Finland M-30 blue stamp items, stamp varieties and plate blocks. Covers and other documents, especially unusual destinations, also wanted. Not looking for items franked with other stamps as well. Mike Ley, 330 Sonja Dr, Doniphan NE 68832. [giscougar@aol.com](mailto:giscougar@aol.com).



**Wanted:** Iceland stamps with "Tollur" (revenue) cancellations: Scott Nos. 99, 111, 115, 118, 130, 131, 135, 139, all Parliament issues (152-166), 198, C1-2, C16, C17a and all officials (O40-O52). I will pay premium prices over Scott and Facit valuations. Let me know what you have and your asking prices. Roger Cichorz, 3925 Longwood Ave, Boulder CO 80305-7233, email: [rcichorz@comcast.net](mailto:rcichorz@comcast.net)

Member ads are free, as space permits, to aid in buying, selling or obtaining information. Please contact the editor for more information or to submit an ad. ■



---

# The Scandinavian Collectors Club

**Founded Nov. 25, 1935**

SCC Website: [www.scc-online.org](http://www.scc-online.org)

## Elected Officers

**President:** Steve Lund, PO Box 16213, St. Paul MN 55116; [steve88h@aol.com](mailto:steve88h@aol.com)

**Vice President:** Christopher Dahle, 1401 Linmar Dr NE, Cedar Rapids IA 52402-3724;  
[chris-dahle@fastermac.net](mailto:chris-dahle@fastermac.net)

**Vice President, Chapters:** Randy Tuuri, 29 Cambridge Way, Piedmont CA 94611; [tuurifam@comcast.net](mailto:tuurifam@comcast.net)

**Secretary:** Alan Warren, PO Box 39, Exton PA 19341-0039; [alanwar@att.net](mailto:alanwar@att.net)

**Treasurer:** Kauko Aro, 325 Riverwood Rd, Mooresville NC 28117; [kiaro@roadrunner.com](mailto:kiaro@roadrunner.com)

**Immediate Past President:** Mats Roing, 89 Summit Way Apt 2, Gardiner MT 59030-9314;  
[mr22841@gmail.com](mailto:mr22841@gmail.com)

**Directors:** Matt Kewriga, Schuyler Rumsey, 47 Kearny St Ste 500, San Francisco CA 94108-5522;  
[matt@kewriga.com](mailto:matt@kewriga.com)

Roger Cichorz, 3925 Longwood Ave, Boulder CO 80305-7233; [rcichorz@comcast.net](mailto:rcichorz@comcast.net)

John Salmi, [jsalmi5@shaw.ca](mailto:jsalmi5@shaw.ca)

Jerry F. Eggleston, PO Box 829, Breckenridge CO 80424; [jerryeggleston@comcast.net](mailto:jerryeggleston@comcast.net)

Viggo Warmboe, 2740 Foxgate Dr, Minnetonka MN 55305; [vigo62@comcast.net](mailto:vigo62@comcast.net)

George Kuhhorn, PO Box 4486, Emerald Isle NC 28594; [geostamps@hotmail.com](mailto:geostamps@hotmail.com)

## Appointed Officers

**Executive Secretary:** Steve Lund, PO Box 16213, St. Paul MN 55116; [steve88h@aol.com](mailto:steve88h@aol.com)

**Library Committee:** Paul Albright, Howard Benson, Roger Cichorz, Greg Frantz, Jim Kilbane.  
Contact: SCC Library, c/o RMPL, 2038 South Pontiac Way, Denver CO 80224;  
[palbright@wiche.edu](mailto:palbright@wiche.edu)

**Membership Chairman:** George A. Kuhhorn, PO Box 4486, Emerald Isle NC 28594;  
[geostamps@hotmail.com](mailto:geostamps@hotmail.com)

**Exhibition Coordinator:** Matt Kewriga, Schuyler Rumsey, 47 Kearny St Ste 500, San Francisco CA  
94108-5522; [matt@kewriga.com](mailto:matt@kewriga.com)

**Stamp Mart Manager:** Viggo Warmboe, 2740 Foxgate Dr, Minnetonka MN 55305  
[vigo62@comcast.net](mailto:vigo62@comcast.net)

**Canadian Mart Manager:** Roger Fontaine, 9 Rochester Ave, Winnipeg, MB, R3T 3V6, Canada;  
[stampman9@gmail.com](mailto:stampman9@gmail.com)

**APS Representative:** Steve Lund, PO Box 16213, St. Paul MN 55116; [steve88h@aol.com](mailto:steve88h@aol.com)

**Literature Promotion:** Alan Warren, PO Box 39, Exton PA 19341-0039; [alanwar@att.net](mailto:alanwar@att.net)

**Publicity Chairman:** Vacant

**Website Coordinator:** Christopher Dahle, 1401 Linmar Dr NE, Cedar Rapids IA 52402-3724; [chris-dahle@fastermac.net](mailto:chris-dahle@fastermac.net)

**Historian:** Vacant

**Awards Chairman:** Matt Kewriga, Schuyler Rumsey, 47 Kearny St Ste 500, San Francisco CA  
94108-5522; [matt@kewriga.com](mailto:matt@kewriga.com)

## SCC Study Groups

**DWI:** Arnold Sorensen, 7666 Edgedale Dr, Newburgh IN 47630-3062; [valbydwi@hotmail.com](mailto:valbydwi@hotmail.com)

**Sweden Ring:** George A. Kuhhorn, PO Box 4486, Emerald Isle NC 28594; [geostamps@hotmail.com](mailto:geostamps@hotmail.com)

**Finnish Study Group:** Vacant

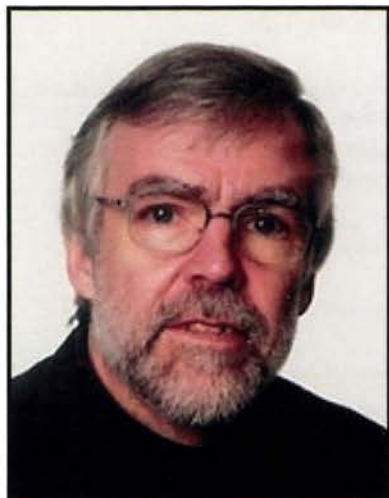
**Danish Wavy Line:** Donald B. Brent, 4501 Mayapan Dr, La Mesa CA 91941; [dbrent47@sprynet.com](mailto:dbrent47@sprynet.com)

**Scandinavian Revenues:** Paul Nelson, Tucson, Ariz.; [pnelstucson@gmail.com](mailto:pnelstucson@gmail.com)

## Transfers and Re-Entries

By Alan Warren

**Stockholmia 2019** will feature a special exhibition marking the 150th anniversary of the **Royal Philatelic Society London**. The dates are May 29-June 2 and the venue is the Waterfront Conference Center at Nils Ericson's Plan 4 in Stockholm, near the central railway station. The nearby Radisson Blu Hotel will be the official show hotel.



Otto Kjærgard

**Gustaf Douglas**, current owner of the famed Tre Skilling Yellow error, will be lead patron of the event and **Jonas Hällström** will head up the exhibition management team. **Lars Engelbrecht** is president of the jury and **Jan Berg** is commissioner general. **Wolfgang Maasen** is head of publications and literature, and **Tomas Bjäringer** will coordinate exhibits and activities.

**Erling Sjong** of Norway died Dec. 14, 2015, at age 85. He was editor of *Norsk Filatelistisk Tidsskrift* for 22 years. In 1981 he was awarded the Norwegian federation's Silver Lion and, in 1985, its Badge of Honor.

The American Philatelic Society supports its chapters and affiliates by placing an outstanding article from their journals in a special area of the APS web site devoted to "Articles of Distinction." SCC's 2014 Frederick A. Brofos award winner was **Per Gustafson** with his article "Divided Postcards: Their Introduction and Early Postal History in Scandinavia." It is now posted on the APS site: [www.stamps.org/articles-of-distinction](http://www.stamps.org/articles-of-distinction).

FRANK BANKE

**B**

PHILATELISTS

DANISH WEST INDIES

FAROE ISLANDS

GREENLAND

Montly 25 news items  
[www.fbanke.com](http://www.fbanke.com)

ICELAND

DENMARK

SLESVIG-HOLSTEN

DANISH EAST INDIA

**LETTER TO THE FAROE ISLANDS**

**154 Sk. Rate via Lerwick**



**WE HAVE MOVED TO POLAND !**

**Nadrzeczna 21, 83-000 Juszkowo, Poland**

**[banke.philatelists@gmail.com](mailto:banke.philatelists@gmail.com) · Phone +48 58 741 2636**



Per also received the Tapling Medal of the Royal Philatelic Society London for his article in the *London Philatelist*, "Divided Postcards with Postage Due 1902-1907."

**Cornelis Nieuwland** published a philatelic journal, *PLN International*, which carried references to Nordic philatelic literature. He stopped publication many years ago and I just learned that he died in Leeuwarden, Netherlands (where he was also born), Aug. 13, 2014, at age 93. He was an officer in the Salvation Army and a Knight in the Order of Orange-Nassau.

**Friedhelm Bernhardt**, author and collector of Swedish Pomerania postal history, died in December 2015 at age 74. He was born in Austria and lived in Sweden and the United States, the latter during much of his career with the Volvo Corporation. In recent years he had moved back to Sweden and lived in Öland. His exhibit, *Postal History of Swedish Pomerania 1648-1815*, won a gold at the London 2015 exhibition.

Five Nordic judges were members of the New York 2016 World Stamp Show jury: **Lars Engelbrecht** and **Jørgen Jørgensen** from Denmark, **Ivar Sundsbø** from Norway, **Jonas Hällström** from Sweden and **Jukka Mäkinen** from Finland.

During the Philatelic Congress of Great Britain, to be held in July at St. John's College, Cambridge, two Scandinavian luminaries will sign the Roll of Distinguished Philatelists. **Lars Engelbrecht** of Denmark will be recognized for his contributions to the field of postal stationery as revealed through his exhibits, research articles and his chairmanship of the FIP postal stationery commission. **Jonas Hällström** of Sweden has organized and chaired the philatelic summit seminars held in Malmö, chaired the FIP thematic philately commission and edited the journal, *Fakes, Forgeries & Experts*. Both signers have earned large gold medals at FIP exhibitions.

Denmark's highest philatelic honor, the Danmark Medaille for 2016, has been bestowed on **Otto Kjærgard** for his achievements in Danish philately. He is the longtime editor of the Danish Postal History Society's journal, *Dansk Posthistorisk Tidsskrift*. Three Swedish philatelists were recently elected to the Royal Philatelic Society London: **Christer Brunström**, **Peter Nordin** and **Lars Ekberg**. SCC member **John McKay** is named editor of the Civil Censorship Study Group's Newsletter. He collects censored mail to and from (neutral) Sweden during WWI and WWII. SCC member and APS judge **Mike Ley** served as the club's commissioner/judge at Nordia 2016 held in April in Jyväskylä, Finland. He was an apprentice juror in the Traditional class and passed with flying colors. Congratulations Mike!

**Roger Tozer** is the new chairman of the Faroe Islands Study Circle, replacing **Peter Sondhelm** who was chairman for four years. ■



**Mike Ley**

**Please...**  
**Make it a point to support our advertisers**  
**through your purchases.**  
**They support your journal — and our specialty!**

*Welcome to the largest  
auction house in Sweden for  
philately and numismatics!*



6 PUBLIC AUCTIONS EVERY YEAR,  
WITH 2,500-4,500 LOTS IN EACH ONE.

All auctions are professionally presented in catalogues and on our homepage – **[www.philea.se](http://www.philea.se)** – the most visited philatelic site in Northern Europe.

Our emphasis is on Scandinavia, but we also offer material from all over the world.

The following auction companies are now part of the Philea-group.

- Lars Tore Eriksson Frimärksauktioner
- Frimärkskompaniet AB
- Kihlströms Frimärkshandel AB
- Göteborgs Frimärkslager
- NOVA

**Contact  
Us!**

AB PHILEA • Svartensgatan 6 • SE-116 20 Stockholm • Sweden  
Phone: +46 8 640 0978 • Fax: +46 8 643 22 38 • E-mail: [mail@philea.se](mailto:mail@philea.se)



---

## Chapter Reports

---

*Randy Tuuri, Vice President, Chapters*

### Chapter 9 – North New Jersey

The April meeting was a presentation on Norway No. 1 and the upcoming World Stamp Show NY2016 was discussed.

### Chapter 7 – New York

The group met and reviewed Mart books and then discussed the World Stamp Show NY2016.

### Chapter 4 – Chicago

At Chapter 4's regular meeting, members had a demonstration on the uses of a stamp microscope. They also had the usual show-and-tell with Mart books from the APS and SCC.

### Chapter 17 – Southern California

The regular meetings continue with Mart books and fellowship.

### Chapter 1 – Seattle

Chapter members perused circuit books in January, studied Denmark in February and had a presentation on Estonia in March.

### Chapter 21 – Golden Gate

The group has continued monthly meetings at members' homes, reviewing Mart books. The May meeting was held at Westpex and featured a talk on early Finnish Censor Markings - 1914-18, by Herb Volin.

### Chapter 14 – Twin Cities

At the March meeting, each member gave a presentation on an item from his/her collection and in April the Spring Auction was held.

### Chapter 27 – Colorado

The March meeting had a presentation on Faroes WWII postal history. The April meeting featured a members' auction and in May a presentation on *Scandinavian Revenues* was made by a member. ■



***If you are not already a member  
of an SCC chapter near you,  
please locate one in the directory found in this issue.  
There are many friends waiting to welcome you!***

Online SCC Member Directory  
@ [www.scc-online.org](http://www.scc-online.org) A great member service!

---

# Scandinavian Literature Notes

---

By Alan Warren



## News from Denmark



Mogens Andersen reviews the cancellations of Vesløs over the years in the February *Dansk Filatelistisk Tidsskrift*. In the same issue he provides similar treatment for Vildsund Vest. Lasse Nielsen illustrates a number of proofs and essays of early issues of Denmark in the March *Norsk Filatelistisk Tidsskrift*. Niels Kristian Hansen describes and shows some uses of the 1912 35-øre provisionals.

Denmark has a Railway Parcel Stamp Club, Dansk Fragt-og Banemærkeklub. The club website is [www.fragtmaerker.dk](http://www.fragtmaerker.dk). There is interest also in the use of ferries and buses to transport freight. The club was founded in 1997. It has published several monographs and a catalog of railway stamps. The quarterly journal usually carries an auction, club news, a question and answer column, a “from my collection” article occasionally, club news and new findings. Summer excursions include visits to railway museums. The club has an extensive library and provides a sales circuit for duplicates. The club currently has 76 members – mostly in Denmark – but in a dozen other countries as well. Further details can be obtained from the group’s website, or by sending inquiries to their treasurer Hans Andersen, [kasserer@fragtmaerker.dk](mailto:kasserer@fragtmaerker.dk).

## News from the Faroes



The November issue No. 26 of *Posta Stamps* provides stories behind some of the new stamps released earlier this year. Kim Simonsen relates the fate of the East India ship *Westerbeek* that lost its way in 1742 and crashed in Suðuroy, as depicted on the souvenir sheet. Old firefighting equipment – two engines and a pumper – and their history, are described by Vagnur Michelsen. The equipment is shown on three stamps released Feb. 26 and the historic items are now preserved and stored at Oygjarvegur.

## News from Finland



Marcus Olli presents the story of the Helsinki City Post (local) issues in the Nordia 2016 show program/catalog. City Post made contracts with some businesses (banks, insurance companies, breweries) where stamps were not needed and covers were simply dated and marked FRKO.

## News from Germany



In the February issue of *Philatelistische Nachrichten*, Rolf Dörnbach continues his series on the smaller islands of the Faroes, this time with a focus on Koltur, Skúvoy, Viðoy, Svinoy and Fugloy. He uses the country’s stamps and maps and also lists the post offices with opening and closing dates. In the same issue of *PN*, Dieter Fullrich recounts the sinking of the *Hans Hedtoft* after ramming an iceberg in 1959 near Greenland. The meter stamps of Åland are the subject of the article by Hartmut Kahrs in which he depicts imprints from a variety of machines.

## News from Great Britain



Peter Sondhelm illustrates Faroes mail carried by the SS *Botnia* in the March *Scandinavian Contact*, including during the period 1918-19, when rates changed, requiring additional stamps or provisional issues. Rolf Scharning discusses postmarks of small coastal towns of Norway, including Kjerringøy, Lurøy, Grovfjord, Ål and Breivika.

Brian Flack has created a new journal on Iceland with the title *Iceland Philatelic Magazine*. Three issues have appeared (December 2015 and January, February this year) in PDF® format, running 16 to 26 pages each. The journal is available by email free from Brian ([flackbp@gmail.com](mailto:flackbp@gmail.com)). Readers have posed questions that are answered by others, and general news items are recorded, such as the Postiljonen auction of the Indriði Pálsson collection, faked overprints offered on eBay, Iceland aerograms, auction



---

results, numeral cancels and handstamp postmarks with missing letters. Copies of the journal are also housed in the SCC Library.

Norman Hudson reports the closing of the post office at Miðvágur in the Faroes in the May issue of 238, the journal of the Faroe Islands Study Circle. Following the opening of the new post office early in 2015 at Vágur airport, it was expected that the Miðvágur office would be closed, and so it was at the end of December last year. The office was opened in 1903.

In the same issue, Peter Sondhelm describes special services and fees requiring the Gebyr stamps in the Faroes that Denmark issued in 1923. From 1919-23 regular Danish stamps were used but canceled with straight-line town marks to indicate the fee had been paid.

In the May 2016 issue of Brian Flack's *Iceland Philatelic Magazine*, Ólafur Eliasson writes about the country's charity issues of 1933, 1949 and 1965 to benefit the Charity Fund of Iceland. The proceeds were used to support life savings, homes for children and the elderly, and similar causes.

### News from Iceland



The well-known stamp engraver Czesław Ślania is the subject of Sigurður Thoroddsen's article in the issue No. 18 (2016) of *Frimerkjablaðið*, with a focus on the stamps he created for Iceland. Guðbergur Magnússon shows some picture postcards celebrating the day of confirmation. Ólafur Eliasson expounds on the Hóplug Ítala 1933 issue.

### News from the Netherlands



Ton Steenbakkens provides the second part of his series on Danish maritime mail and the sailing ships that handled it in the March issue of *Het Noorderlicht*. Vessels that he illustrates and describes include the *Aron*, *Jylland*, *Jens Krogh* and *Elinor*.

### News from Norway



Knut Glasø reports on special tax stamps used by Trondheim's port authority in the March issue of *NFF-Varianten*. Aerophilatelist Ivar Sundsbø writes about the pioneer and early years of commercial airmail in issue 1/2016 of *Norsk Filatelistisk Tidsskrift*. He shows examples of early 1920s flown covers from England, France, Sweden, Norway, Germany, Belgium and Estonia. In the same issue, Michael Zelenak writes about the popular violinist Ole Bull who spent much time in the United States and tried to start a New Norway colony there.

Knut Arveng discusses early air mail, namely balloon post, in issue 1/2016 of *INFO*, published by the Oslo Filatelistklubb. Following mention of the German-French war of 1870-71 and the balloon *Ville d'Orléans*, he describes Salomon August Andréé and his *Ørnen*.

Knut Arveng also shows pictures of some of Norway's air defense equipment of World War I and WW II in the March *Norwegian War and Field Post Journal*. The items include anti-aircraft weapons, airships, searchlights and a few pieces of associated mail. Atle Fossmark shows examples of censored mail at Stavanger, Norway, during 1940. The prolific Arveng also illustrates some photo postcards depicting the transport of Norwegian wounded troops through neutral Sweden in WWI.

Editor Øyvind Refsnes continues the discussion of "philatelic manipulation" in the issue 2/2016 of *Norsk Filatelistisk Tidsskrift*, showing stamps that have been restored. The discussion began in the February issue of the Danish journal *DFT*. Some examples are shown in "before" and "after" condition and presumably were sold and/or received certificates. Other experts who comment on the topic in this issue of *NFT* include Hans Enger and Finn Aune.

In the same issue, Arne Eriksen describes the disappearance of the Posthorn logo in Norway's Post with its evolution into a new symbol used today. Dag Henriksbø continues his series on U.S. post offices that reflect Norwegian names, this time with a focus on locations in Alaska and Florida.

---

In *NFT* 3/2016, Editor Øyvind Refsnes has two articles about Norwegian first-day covers. One indicates that a new catalog of Norway FDCs is in the making. Øyvind Midtlied explores the “miniature” postmarks of Norway, typically with a CDS diameter of 14-16 mm. His first installment deals with bridge-type Kristiania markings that also contain abbreviations such as Pktr., Bko., P.A. and P.P.I. Dag Henriksbø writes about Norwegian place names in Minnesota, including Sogn and Norway.

## News from Sweden



Peter Nordin describes some freaks and errors of Sweden’s registration labels in the issue 1/2016 of *Svensk Filatelistisk Tidskrift*. In the same issue, Helena Obermüller Wilén warns about fake 19th-century Swedish covers, particularly to foreign destinations.

In issue 2/2016 of *SFT*, Bo Dahlner describes the 1931 5 Kr Stockholm Palace issue, which was printed on two types of paper. Peter Lorentzon offers new details on how splitting anomalies occur during perforation of stamp sheets. In the same issue Arne Karlsson offers the thematic collector some examples of the cathedral of Skara with stamps, postmarks and related items.

In issue 3/2016 of *SFT*, Bo Dahlner continues his description of the coil stamps of Sweden, this time with a focus on the 1932 Lützen issue. Peter Lorentzon reports on the special exhibitions of the Postmuseum during this 90th anniversary year of the Friends of the Museum. Feb. 10 to May 10 features rarities from the collection, May 11 to Sept. 13 will be a showing of Social Philately, and Sept. 14 to Nov. 20 will review destinations and the mails.

Per Hanner describes the 1933 flights of Italo Balbo and the overprinted Hóþflug Ítala issue of Iceland in the *Rapport* Nr. 175, published by the Islandssamlarna in Sweden. In the same issue, Leif Nilsson shows some Iceland covers with Scotland transit markings. It is the second installment of his series on foreign transit and arrival marks on Iceland mail.

## News from the United States



Phil Schreiber describes recent pictorial ship cancels used in Norway on cruise ships and some passenger/cargo vessels in the March Universal Ship Cancellation Society’s *Log*. Examples include the *Lofoten*, *Galatea* and *Sjokurs*.

Christer Brunström reports on Iceland’s Viking stamp issues and their connections to the United States, notably the 1940 New York World’s Fair, in the March 21 issue of *Linn’s Stamp News*. In the same issue, Kathleen Wunderly calls attention to the coming centenary of Finland’s independence in 2017 with a description of the 1917 definitives designed by architect Eliel Saarinen.

John McKay describes two covers in brief items that appeared in the April 2016 issue of the *Civil Censorship Study Group Bulletin*. The first shows a postcard sent by a German sailor in 1916 imprisoned in Sweden after the grounding of the famed cruiser *Albatross*. The card bears a rare censorship mark from Wisby. The second cover is a Militärbrev sent from Åland in 1918 to Stockholm and has an unusual Åland censor marking.

Christer Brunström presents an overview of the first set of Danish West Indies postage due stamps in the May 16 *Linn’s Stamp News*, pointing out the five or so varieties of the 4¢, easily discernible by the shape of the numeral “4.” He also cautions on forgeries of these stamps. ■

**Please make it a personal goal  
to recruit at least one new SCC member this year.  
It helps all of us!**



# Scandinavian Area Awards

## Awards from several recent shows at home and abroad

**Matt Kewriga** took a gold and the show reserve grand award at Texpex in Grapevine, Texas, in February with his *Danish West Indies Foreign Mail 1748-UPU*. At the same show **Don Brent** received a gold and the single frame grand award for his *Denmark's 1902 Design Contest*.



**Kauko Aro** received a gold, the Rossica Society award and the United Postal Stationery Society Marcus White award at the Garfield-Perry March Party in Cleveland for his *Finland Postal Stationery with 1875 Stamp Design*. Another gold, along with the APS research medal and the Collectors Club of Chicago philatelic exhibitor's award, went to **Eigil Trondsen** for *Norway Registered Mail 1800-1951*.



Above left: Matt Kewriga.

Above: Kauko Aro.

Left: Eigil Trondsen.



**John Higgs** won a vermeil at the Canberra (Australia) Stamp Show in March for his *Faroe Islands to 1975*. **Alan Warren** received a silver and the Women Exhibitors sterling achievement award at the Plymouth Show in Michigan in April for his *Denmark: The Christian X Issues of the 1940s on First Day Covers*. ■

– Alan Warren

## SCC Chapter Meetings & Contacts

1. SEATTLE/NW: 2nd Monday, 9 a.m. at members' homes. CONTACT: Dana S. Nielsen, 13110 NE 177th Place, PMB #263, Woodinville WA 98072-5740. email: [dananielsen@comcast.net](mailto:dananielsen@comcast.net).
  4. CHICAGO: 4th Thursday of January-June and September, October; 1st Thursday of December, Des Plaines Public Library, 1501 Ellinwood St., Des Plaines IL 60016. CONTACT: Ron Collin, PO Box 63, River Grove IL 60171-0063; (773) 907-8633, phone: (312) 259-1094, email: [collinr@ameritech.net](mailto:collinr@ameritech.net).
  7. NEW YORK: second Wednesday of February, April, June, September and November at The Collectors Club, 26 E 35th St, NYC. CONTACT: Carl Probst, 71 Willoughby Ave, Hicksville NY 11801, email: [cwp1941@aol.com](mailto:cwp1941@aol.com).
  9. NORTH NEW JERSEY: 3rd Wednesday at members' homes. CONTACT: John Abrahamsen, 759 Peach Tree Lane Franklin Lakes NJ 07417, (201) 739-8589, email: [john.abrahamsen.bnp@gmail.com](mailto:john.abrahamsen.bnp@gmail.com).
  14. TWIN CITIES: 2nd Thursday (except July and August), 7 p.m. at Danish American Center, 3030 W River Parkway S, Minneapolis MN 55406. CONTACT: Steve Lund, 383 Grand Ave Apt. 5, St. Paul MN 55102; (651) 224-3122; email: [steve88h@aol.com](mailto:steve88h@aol.com).
  17. SOUTHERN CALIFORNIA: 1st Wednesday at members' homes. CONTACT: Jerry Winerman (818) 784-7277, or email: [gerjerry@sbcglobal.net](mailto:gerjerry@sbcglobal.net).
  21. GOLDEN GATE: 1st Saturday, 11 a.m., at members' homes and at various shows (WESTPEX, PENPEX, etc.). CONTACT: Herb Volin, (510) 522-3242, email: [HRVolin@aol.com](mailto:HRVolin@aol.com).
  24. MANITOBA: 2nd & 4th Wednesdays September through May at Scandinavian Cultural Centre, 764 Erin St., Winnipeg, MB. CONTACT: Robert Zacharias, 808 Polson Ave., Winnipeg, MB R2X 1M5, Canada, email: [robertzacharias@shaw.ca](mailto:robertzacharias@shaw.ca), Website: <http://members.shaw.ca/sccmanitoba>.
  27. COLORADO: 1st Saturday September-June, 10 a.m., at the Rocky Mountain Philatelic Library, 2038 S. Pontiac Way, Denver CO 80224. CONTACT: Roger Cichorz, 3925 Longwood Ave., Boulder, CO 80305-7233, email: [rcichorz@comcast.net](mailto:rcichorz@comcast.net).
- AUSTRALIA COORDINATOR: John McKay, email: [john.mckay@analysisinternational.net.au](mailto:john.mckay@analysisinternational.net.au)  
NEW ZEALAND COORDINATOR: John Campbell, email: [johncampbellnz@hotmail.com](mailto:johncampbellnz@hotmail.com).



## Become a Catalog-Carrying Member

One of the best ways to support the SCC is to become a catalog-carrying member. For only \$125, SCC members receive a three-year prepaid membership renewal plus choice of one of the following catalogs post-paid: *FACIT Special Classic*, *Norden 2016*, *Postal IX* or *LAPE Special, Part I*. Members selecting this option benefit the SCC by making a long-term membership commitment. Conversely, the SCC offers its members the catalogs at a substantial savings from normal retail prices. It is a win-win situation.

Catalog memberships were introduced in 2013 and resulted in 170 new and renewing three-year memberships. Those memberships will be up for renewal in 2017. With the issue of the three new FACIT catalogs – plus SCC participation at NY2016 – the catalog membership was reinvented.

Already the current campaign has produced five new three-year memberships, 47 three-year renewals and seven library or life member sales, resulting in 21 *Classic Special*, 13 *Norden 2016*, 13 *Postal IX* and 12 *LAPE Special* catalogs distributed to SCC members. At the NY2016 SCC society table, an inventory of 125 catalogs was available. In addition to generous numbers of the aforementioned titles, a limited number of *Norgeskatologen 2016*, *Norgeskatologen Postal II* and *AFA Special Danmark 2016* will be offered to renewing members. It was SCC's expectation that all 125 catalogs would be disbursed at NY2016. Catalogs will also be available at Minnesota Stamp Expo, July 15-17; APS StampShow, Portland, Aug. 4-7; and Chicagopex, Nov. 18-20; as well as for 2017 membership renewals.

Regretfully, I must report the loss of 17 members whose memberships have lapsed and failed to renew. Retaining members is of highest SCC concern. These members have been sent three notices via email, post or both to addresses on file. Membership chairman George Kuhhorn has telephoned all domestic members with valid phone numbers. This will be the final issue of *The Posthorn* sent to these now suspended former members. ■

## Membership Statistics for the First Quarter 2016 (Feb. 1 through May 1, 2016)

### New Members

4288 Monday, Nyle C, PO Box 111055, Campbell, CA 90511

### Change of Address

L-101 Banke, Frank, Nadrzečna 21, 83-000 Juskowo, Poland  
 4151 Bergstrom, Ronald, PO Box 251, Lincoln CA 95648  
 3405 Carlson, Gary M, 1261 Ducrest Dr S, Columbus OH 43320  
 1572 Raphael, Steven M., 870 United Nations Plaza 23A, New York NY 10017  
 4083 Smith, Randy, PO Box 30, Rosemount MN 55068

### Reinstated

2434 Swenson, Gerald R., 1140 – 60th Av SE, DeGraff, MN 56271

### Membership Suspended/Failure to Remit Dues

4265	Charlton, David	2270	Montello, Lawrence
3549	Christensen, Dan	3955	Ostman, Rurik
4267	Fader, Marvin	1708	Pisila, Eric
3601	Fraser, Don	3743	Rossel, Henrik
4202	Freese, Herbert	3973	Sirevaag, Eric
3861	Griffiths, Frank	4054	Stanger, David
3774	Grindem, Bjarne	3161	Steele, John
4644	Henry, Mike	3793	Wilson, Laila
2321	Julian, Richard		

### Deceased

2457 Bednar, Leif (11/12/13)  
 3932 Davis, Lee

### Recent Donations to SCC or to Library

(cash or library materials)

4110 Sam Partain  
 3830 Eugene S. Brink  
 3345 Roger Cichorz  
 3927 Jim Fredlund  
 1389 Paul Nelson  
 4162 Charles Peterson  
 H32/1087 Alan Warren



---

# SCC Library Auction No. 43

(Closing Date July 15, 2016)

This is the 43rd auction of items being offered to SCC members. These 30 lots are excess to current SCC Library holdings. Auction realizations will be used to purchase future literature acquisitions for the SCC Library. Place bids with Roger Cichorz, 3925 Longwood Ave, Boulder CO 80305-7233, USA; telephone (303) 494-8361, or email: [rcichorz@comcast.net](mailto:rcichorz@comcast.net). This auction closes July 15, 2016.

## Terms of Sale:

1. The minimum bid accepted for a lot is the starting bid. Wherever possible, the auctioneer's estimated market value (EMV) or actual current market value from dealers' pricelists (CMV) is included in the lot description as a guideline for bidders.
2. The highest (successful) bid will be placed at one bidding increment over the second-place bid. Bidding increments are: \$0.50-\$5 = \$0.50, \$5-\$25 = \$1, \$25-\$50 = \$2, \$50-\$100 = \$3. Bids are in U.S. currency. In instances of tied high bids, the lot sells to the earliest bidder.
3. Mail, telephone or email bids are acceptable. Please include your name, address and telephone number. Email bids will be confirmed by email reply. Telephone bids will be recorded and confirmed at the time they are placed. Bidders should provide their SCC membership number to confirm eligibility to participate.
4. Successful bidders will be informed of their winning bids shortly after the close of the auction. Invoices will be included with the dispatched auction lots. Postage (and insurance, if applicable) will be added to the price of the successful bid(s). Payment can be made in U.S. funds by check (to the "SCC Library"), USPS postal money order, bank draft or in currency (at sender's risk, auctioneer suggests certified or insured mail). Sorry, credit-card payments are not accepted, although payments via PayPal can be arranged (inquire with the auctioneer).
5. Lots may be returned for a refund if grossly misdescribed. Lots consisting of multiple non-book items are only approximately described, so slight inaccuracies in the item counts and description of the lots are not cause for return. Books, catalogs and periodicals are generally used library copies in serviceable condition, unless otherwise noted in the lot descriptions.
6. Prices realized for lots are published in *The Posthorn* and on the SCC website. Unsold lots are noted at the end of the prices realized list and are available on a first-come, first-served basis at their starting bids.

## Lot Numbers and Descriptions:

### Literature Lots

**Lots 1 through 5 are "archival files" composed of unsorted articles, monographs, columns, features and more, culled from stamp newspapers and philatelic periodicals dating from as early as the 1920s to the present and that are extraneous to or duplicates of SCC Library holdings. Articles are primarily philatelic, covering a wide variety of subjects, ranging from specialist to general — a veritable treasure trove of information contained in each of these files. Some duplicate articles are included in these lots but were not counted in the totals.**

1. **Finland/Articles:** Archival file with ~2-inch-thick contents comprising ~130 varied articles and tear sheets on Finnish philately, including classic stamps, local posts, forgeries, postmarks, ship mail, postal history, perfins, more, ~543 pages total, mix of photocopies and originals, majority of the pages in English (24 @ ~150 pages in Finnish). EMV = \$93, Starting bid = \$15.
2. **Greenland/Articles:** Archival file with ~1-inch-thick contents comprising ~63 varied articles and tear sheets on Greenlandic philately, including stamps, pakke portos, Thule locals, postmarks, ship mail, postal history, more, ~340 pages total, mix of photocopies and originals, ~1/3 of the pages in English (19 @ ~223 pages in Danish). EMV = \$48, Starting bid = \$8.
3. **Iceland/Articles:** Archival file with ~2-inch-thick contents comprising ~112 varied articles and tear sheets on a range of Icelandic philately, including classic stamps, forgeries, postmarks, ship mail, topicals, postal history, more, ~500 pages total, mix of photocopies and originals, majority of the pages in English (20 @ ~160 pages in Icelandic or Danish). EMV = \$84, Starting bid = \$14.
4. **Norway/Articles:** Archival file with ~1-inch-thick contents comprising ~48 varied articles and tear sheets on a range of Norwegian philately, including classic stamps, forgeries, postmarks, ship mail, postal history, more, ~373 pages total, mix of photocopies and originals, ~1/2 half of the pages in English (12 @ ~201 pages in Norwegian or German). EMV = \$54, Starting bid = \$8.

5. **Sweden/Articles:** Archival file with ~3½-inch-thick contents comprising ~211 varied articles and tear sheets on a range of Swedish philately, including classic stamps, postal history, perfins, local posts, more, ~1,090 pages total, mix of photocopies and originals, most of the pages in English but those in Swedish are lengthier (34 @ ~496 pages in Swedish). EMV = \$170, Starting bid = \$28.

The next 12 lots are catalogs that despite outdated prices are still useful because of their detailed specialized stamp listings, coverage of Cinderella material and stand-alone articles (often in English). Overall condition ranges from very good to excellent. Because these items are offered so inexpensively, only minimal descriptions are given to economize on space. All editions of the Facit *Specialkatalog* cover (in detail with much specialist information throughout) Sweden, Norway, Denmark, Slesvig, D.W.I., Faroes, Greenland, Iceland, Finland and Åland (starting 1985). These include “back-of-the-book” listings for postal stationery, stamp booklets, locals, Christmas seals, labels and etiquettes, etc., but coverage changes with editions and evolves and improves as annual editions progress.

6. **Denmark/Danish Areas:** *AFA Danmark Frimærkekatalog* 1987, in Danish, color illustrations throughout, 236 pages, softbound. Covers stamps and major type varieties of Denmark, Slesvig, Faroes, Greenland, Thule and D.W.I., plus Denmark and Danish area Christmas seals and booklets. CMV = \$8, Starting bid = \$2.
7. **Sweden:** *Facit Ortstämpelkatalog / Postal History* 1989, in Swedish and English, 352 pages, softbound. Profusely illustrated handbook includes 60 pages of bilingual articles on prephilatelic postal documentation and stamp period postmarks, followed by listings of Swedish place name postmarks. EMV = \$12, Starting bid = \$3.
8. **Sweden:** *Facit Postal* 1993, in Swedish and English, 384 pages, softbound. Greatly expanded version of the 1989 *Ortstämpelkatalog* forerunner contents, with additional sections on 1874-1920 postal labels/etiquettes, 1911-76 postage due labels and military mail, covers and postmarks. EMV = \$20, Starting bid = \$5.
9. **Sweden:** SFF's *Sverige-Katalogen*, 1985-86 / *Specialkatalog*, *Sveriges Frimärken och Helsaker*, in Swedish, 488 pages, softbound. Specialized listings of stamps and postal stationery, includes additional sections on postal shipments, etiquettes, postage-due mail and local posts. CMV = \$12, Starting bid = \$3.
10. **Scandinavian/Nordic:** *Facit* 1971 *Specialkatalog*, in Swedish and English, 468 pages, softbound. Includes Christmas seals, locals and articles in English on Swedish and Icelandic rarities. CMV = \$3, Starting bid = \$1.



## Scandinavia

*The Scandinavian Specialist since 1973*

- Building fine collections for exhibition, research, and enjoyment. Offering approvals from your specific want list or a description of your specialized interests.
- Complete private treaty services for your Scandinavian material.
- Active buyer of complete collections or individual items. High prices paid. Avoid the delays and uncertainty of auctions. I have many customers for your good material.
- Providing over 400 titles of philatelic literature and catalogs for the Scandinavian collector.

Call toll-free 1-800-44-STAMP (1-800-447-8267)

Phone: 336-376-9991      Fax: 336-376-6750  
email: [js@JaySmith.com](mailto:js@JaySmith.com)      [www.JaySmith.com](http://www.JaySmith.com)

**Jay Smith**

P.O. Box 650-SCC Snow Camp, NC 27349 USA



11. **Scandinavian/Nordic:** Facit 1973 *Specialkatalog*, in Swedish and English, 494 pages, softbound. Includes several specialized articles, some bilingual and others entirely in Swedish. CMV = \$3, Starting bid = \$1.
12. **Scandinavian/Nordic:** Facit 1974 *Specialkatalog*, in Swedish and English, 516 pages, softbound. Includes several specialized articles entirely in Swedish. CMV = \$3, Starting bid = \$1.
13. **Scandinavian/Nordic:** Facit 1980-81 *Specialkatalog*, in Swedish and English, 614 pages, hardbound library binding. Includes several specialized articles entirely in Swedish. CMV = \$8, Starting bid = \$2.
14. **Scandinavian/Nordic:** Facit *Special* 1987, in Swedish and English, 510 pages, softbound. Includes bilingual articles on Swedish postal documentation before the stamp period, values of Swedish stamps on covers to domestic and foreign destinations, rarity rankings of Swedish covers abroad 1855-1919, Swedish proofs-reprints-forgeries, Norwegian prephilately, Icelandic covers and cancellations and prephilatelic postmarks of Finland. CMV = \$8, Starting bid = \$3.
15. **Scandinavian/Nordic:** Facit *Special* 1990, in Swedish and English, 612 pages, softbound. Includes bilingual preliminary catalog information and articles on Swedish prephilatelic postal history, values of Swedish stamps on domestic covers and to foreign destinations, rarity rankings of Swedish covers abroad 1855-1938, Norwegian prephilately, Icelandic covers and cancellations and prephilatelic postmarks of Finland, also extensive "back of the book" listings. CMV = \$8, Starting bid = \$3.
16. **Scandinavian/Nordic:** Facit *Special* 1991, in Swedish and English, 672 pages, softbound. Includes bilingual preliminary catalog information and articles on stamp production and explanations, values of Swedish stamps on domestic covers and to foreign destinations, rarity rankings of Swedish covers abroad 1855-1938, Norwegian prephilately, Icelandic covers and cancellations and prephilatelic postmarks of Finland, also extensive "back of the book" listings. CMV = \$8, Starting bid = \$3.
17. **Scandinavian/Nordic:** Facit *Special* 1993-94, in Swedish and English, 729 pages, softbound. Includes bilingual preliminary catalog information and articles on values of Swedish stamps on domestic covers and to foreign destinations, rarity rankings of Swedish covers abroad 1855-1938, Norwegian prephilately, Icelandic covers and cancellations and prephilatelic postmarks of Finland, also extensive "back of the book" listings. CMV = \$10, Starting bid = \$4.

### **Stamp and Cover Lots**

**Disclaimer:** Although the auctioneer attempts to accurately describe each lot, estimate its current market value and assign a realistic market value, bidders are reminded of the auction term that lots consisting of multiple non-book items are only approximately described, so minor inaccuracies in the item counts and descriptions are not cause for return. Please carefully read each lot description to avoid misunderstandings about lot contents and feel free to contact the auctioneer ([rcichorz@comcast.net](mailto:rcichorz@comcast.net) / (303) 494-8361, for further details and/or clarification.

- S1. **Denmark/State Railway Stamps:** Group of 38 different 1885-1959 Danske Statsbaner F-VF used stamps, 21 range Nos. 3-82 and 17 range between F5-F51, numbers are from 2011 *Katalog over Danmarks Jernbanefrimæker*/KDJ and catalog values are based on the midpoints of the ranges cited in 2014 KDJ supplement, 2014 KDJ @ DKK379/~\$57. Auctioneer can provide a list of stamps in this lot upon request. CMV = \$60, Starting bid = \$25.
- S2. **Denmark/State and Private Railway Stamps:** Lot of 59 different 1880-1958 (primarily pre-1930s) Danish railway stamps, F-VF unused (35) and used (24) stamps, includes representative examples from 21 different railways ranging from AHJ No. 1 to RHJ No. 34. Numbers are from 2011 KDJ and catalog values are based on midpoints of the ranges cited in 2014 KDJ supplement, 2014 KDJ @ DKK1100/~\$165. Auctioneer can provide a list of stamps in this lot upon request. CMV = \$165+, Starting bid = \$65.
- S3. **Denmark/State Railway Stamps:** complete set of four rare 1923 Helsingør-Hørnbæk-Gilleleje Banen stamps, pristine unused condition (no gum as issued), 2011KDJ HHGB #R1a-R2b, 2014 KDJ supplement valued X (DKK801-3500 range or DKK2150 midpoint for each), 2014 KDJ @ DKK8600/~\$1287, low starting bid based on minimum X value @ DKK3200/~\$480. EMV = \$883, Starting bid = \$190.
- S4. **Finland/Russia:** Six Russian stamps postally used in Finland, consisting of four 1883 Imperial Eagle and Post Horn stamps with 1890s railway postmarks (2k and 7k with K.P.X.P. bridge cds and 2k and 5k with Post Kupen bridge cds) and a July 11, 1902, pictorial postcard of a posed Military (?) person, addressed to Järvellä with bicolor franking of 1883 Imperial Eagle 1k and 2k stamps tied by bilingual Finnish/Cyrillic bridge CDS (place name uncertain), useful postal history lot for study. EMV = \$60, Starting bid = \$15.
- S5. **Finland/Stamps:** Seven unused (OG, LH) F-VF military stamps, Scott #M1-M7, and four unused (OG, LH) F parcel post stamps, #Q6-7 and used #Q6 + Q8, 2013 Scott CV @ \$42. CMV = \$30, Starting bid = \$7.50.





- S6. Finland/East Karelia/Stamps:** Extensive exhibit-quality collection of East Karelia stamps issued by the Russian territory of Eastern Karelia under Finnish military administration, Facit #1-28, 125 mint + 6 used stamps in mounts on 7 Lighthouse pages, issues essentially complete (except for #3-5 type II singles); in addition to 30 of the 33 different mint single stamps, pages contain seven multiples (6 mint + 1 used) with inscription margins, consisting of No. 1 partial lower-left pane of 40 (8x type II), No. 2 partial lower-right pane of 21 (5x type II), No. 3 partial lower right pane of 21 (4x type II), No. 6 block of 5, No. 7 pair, #18 block of 6, and No. 28 used (CTO?) block of 6, Facit @ SEK2562/~\$303 and Scott @ ~\$347. Scott also lists these 28 "Occupation Stamps" for Karelia, but ignores the No. 1-5 type II ("pointed second A in KARJALA") variety. CMV = \$325+, Starting bid = \$225.
- S7. Finland/East Karelia/FDCs/Postal History:** Complete collection of the 28 "Occupation Stamps" for Eastern Karelia on three registered covers and unaddressed piece (cover or package front cut-out), comprising complete set of Nos. 1-7 on Oct. 1, 1941, registered FDC from Aunus to Lohja (11 X 41 Lohja receiving postmark on back), complete set of Nos. 8-15 on piece postmarked with (FDI) Nov. 1, 1941, Repola CDS, complete set of Nos. 16-27 on Feb. 20, 1942, registered FDC from Aunus to Tampere (Pispala & Tampere receiving postmarks on back), and six No. 28 (three vertical pairs) on scarce March 1, 1943, commercial envelope registered FDC from Kontupohja to Pispala (4 III 43 receiving postmark on back), Facit @ SEK680/~\$80 for ordinary (philatelic) FDCs and Scott @ ~\$106 as used stamps. Dealer retail price for the three comparable registered FDCs and unaddressed piece is ~\$192, but try and find these in stock anywhere! CMV = \$192, Starting bid = \$100.
- S8. Greenland:** Group of 73 different 1938-99 Greenland F-VF used (14) and unused (59) stamps (Scott Nos. 1-187, 350 and B8-11), better include Nos. 35-38 unused OG @ \$81.75, No. 350 @ \$7.50, and others @ \$3+, most unused OG/LH but some noted without gum, Scott @ \$242.10. EMV = \$100, Starting bid = \$35.
- S9. Iceland:** Lot of 38 different 1911-51 Iceland F-VF used stamps in six complete sets and two provisional overprints (Scott Nos. 86-91, 144-48, 195-98, 212, 236, 246-252, 257-68 [257 & 263 unused] and 271-72), Scott @ \$194.30. EMV = \$97, Starting bid = \$30.
- S10. Iceland:** Group of 22 different 1933-48 Iceland F-VF mint stamps in four complete sets (Scott Nos. 246-252 unused and mint NH Nos. B1-4, B7-11 and C21-26), Scott @ \$74.50. EMV = \$50, Starting bid = \$20.
- S11. Norway:** Starter collection of ~345 different 1911-95 Norway F-VF stamps (~200 pre-1960), most used (only eight unused), ranges from Scott No. 70-1015 and 45 back-of-book (primarily J No. officials), in a Scott Specialty Series (2-post binder) album with 29 hingeless (transparent mount) pages to 1970 and 54 post-1970 pages without mounts, primarily cheap stamps in this album with most valued at 25¢-\$1, but a few better noted (e.g., No. 206 @ \$7), total Scott @ \$172, album and pages are in sound condition and probably worth \$25 or more. EMV = \$50, Starting bid = \$25.
- S12. Sweden:** Collection of ~2,080 used 1891-2011 Sweden F-VF stamps in two 6- by 8-inch 16-page stock books and six stock cards, ranges from Scott No. 52 to No. 2651. Contains definitive and commemorative issues (no BOB) with many (difficult to find postally used) coil pairs, strips and booklet panes, abundant with better stamps (cat. @ \$1 to >\$10 each), many complete sets, and can form the basis of a nice intermediate collection. Scott catalog value not determined because of magnitude of the task, but let's conservatively estimate an average of 75¢ per stamp for \$1,560 total (in reality, value probably greater as many post-2000 stamps herein catalog several dollars each (e.g., No. 2453 pane @ \$12.50, No. 2560-1 @ \$21.75) — imagine the difficulty and expense in amassing such a comprehensive lot from approval or sales books! EMV = \$380+, Starting bid = \$200.
- S13. Sweden/U.S.A./FDCs:** Group of 12 different cacheted, unaddressed March 29, 1988, FDCs for the Sweden-Finland-U.S. joint stamp issues for the 350th Anniversary of Swedish and Finnish settlements in America, plus one March 24, 1983, FDC for the U.S.-Sweden joint stamp issue for the 1783 Treaty of Amity and Commerce, attractive philatelic covers that retail for relatively high prices, but this lot will save you the effort of trying to find them in dealers' \$1 bargain cover boxes. CMV = \$50, Starting bid = \$12.
- S14. Sweden/Svarslösen Covers:** Scarce modern postal history lot of six commercial business-reply envelopes, comprising two unused and three used 1969-71 Det Bästa (*The Pick*, Sweden's version of *Reader's Digest*) covers franked with Svarslösen stamps, and one unused Franklin Mint reply cover with printed Svars/Lösen indicia with F.M. logo, difficult brief-term-use covers to acquire. EMV = \$60, Starting bid = \$30.
- NP.Net-Price Item/Finland/Stamp Booklet:** As-issued, intact 1985 "Finnish Bank Note Printing" booklet containing a mint pane of eight se-tenant stamps (Scott 706 complete booklet @ \$9 / Facit No. H7, 962-69 @ SEK60/~ \$7.12). CMV = \$7.50, 12 booklets available at net price of \$4 each, specify quantity if more than one desired and auctioneer will try to accommodate orders based on demand. Net price = \$4 each.



## Cinderella and Ephemera Lots

The following 20 lots consist of groupings of charity seals, poster stamps, labels and other ephemera. Because these items do not regularly appear in the philatelic market at consistent prices and stamp dealers generally do not maintain priced stocks of these items, evaluation and pricing becomes an inexact science. The SCC Library auctioneer did his best to visit internet selling sites, dealer's retail lists and realizations of comparable lots in recent auctions to assign realistic yet conservative EMVs for these lots. **Disclaimer:** Although the auctioneer attempts to accurately describe each lot, estimate its current market value, and assign a realistic market value, bidders are reminded of the auction term that lots consisting of multiple non-book items are only approximately described, so minor inaccuracies in the item counts and descriptions are not cause for return. Carefully read lot descriptions to avoid misunderstandings about the contents, and feel free to contact the auctioneer ([rcichorz@comcast.net](mailto:rcichorz@comcast.net)) (303) 494-8361, for further details and/or clarification if you have questions.

- E1. Norway/Cinderellas/Charity Seals:** Four (two different) postmarked Norwegian Cancer Society 1950s stamp-like perforated charity labels, an extra unused label of different design with a paper crease is included but not counted. EMV = \$4, Starting bid = \$1.
- E2. Scandinavia/Nordic/Postcards:** "Pig-in-the-poke" potpourri lot consisting of 13 (10 different) Denmark, Finland, Greenland and Norway postcards and souvenir ephemera, modern unused and postally used items. EMV = \$5, Starting bid = \$1.
- E3. Sweden/Cinderella/Poster Stamps:** Two mint principal publicity seals for the 1912 Stockholm Olympic Games and Gothenburg 1923 Jubilee, respective nude male athlete and Viking ship masthead subjects; lot includes the June 1996 *Luren* containing feature article by Esbjorn Janson about these two poster stamps. CMV = \$25, Starting bid = \$10.
- E4. Sweden/Slania/Ephemera:** Seven official 3½- by 5-inch glossy black-and-white publicity photos for 29 stamps (eight engraved by Czeslaw Slania) issued from June 1984 to January 1985, distributed by PFA, the Swedish Post Office's Stamps and Philatelic Service, to the philatelic press and catalogers. Lot includes four *PFA News* from Sweden publicity releases describing the stamps in detail. Nice ancillary items for modern-issue and topical collectors (stamp subjects include letters, products of Sweden, royalty, Nobel prize winners in physiology and medicine, winter birds, old towns and the Fredrika Bremer Association), not generally available to collectors at the time of release, but occasionally found aftermarket in dealers' stocks. EMV = \$14, Starting bid = \$7.
- E5. Sweden/Cinderellas/Christmas Seals:** Extensive collection of Sweden's National (TB = Cardiovascular Lung Foundation) Christmas seals in chronological order on three stock pages, ~270 different from 1904-93, begins with No. 1 (1904) and almost complete to No. 68 (1961), including various perforation varieties (lacking Nos. 5, 6, 27, 28 & 55). Starting in 1962, annual issues became multi-design se-tenant multiples and panes, 1962-82 seals here are incomplete, but representative singles, strips and blocks are present and thereafter 1983-93 issues are sporadic, each seal is valued at SEK1.00/~12¢ after No. 68 despite higher catalog values, Facit *Sverige 2000* @ ~SEK880/~\$104 and *AFA Julemerker Norden 2012* @ ~SEK906/~\$107. EMV = \$50+, Starting bid = \$25.
- E6. Sweden/Cinderellas/Red Cross:** Lot of 20 different (18 unused & two postmarked) Red Cross (Röda kortset) labels/seals, appear to be from eight different issue series, one ca 1940s gummed and perforated, rest modern with motifs of birds or flowers, no prices found, so estimated @ SEK2.00/~24¢ each. EMV = \$5, Starting bid = \$2.
- E7. Sweden/Cinderellas/På Post:** Group of 24 (22 different, 22 unused) WWII På Post labels, topical interest with motifs of crown and military. No prices found so estimated @ SEK2.00/~24¢ each. EMV = \$6, Starting bid = \$2.50.
- E8. Sweden/Cinderellas/Philately:** Lot of 12 different (two se-tenant pairs + one sheetlet) unused poster stamps/labels from Swedish philatelic organizations, ca. 1950s-'70s. No prices found so estimated @ SEK2.00/~24¢ each. EMV = \$2.50, Starting bid = \$1.
- E9. Sweden/Cinderellas/Scouting:** Seven different unused poster stamps/labels from Swedish scout organizations, ca. 1950s-'60s, note several of these items on eBay priced @ \$3 to \$8 each. EMV = \$25, Starting bid = \$10.
- E10. Sweden/Cinderella/Topical:** Collection of 195 primarily unused, different (25 duplicates on three panes and 17 used with postmarks) poster stamps/labels from various Swedish charities and philanthropic organizations, ca. 1930s-'90s, wide range of topical/thematic motifs in the designs. Prices for most not found, but several on eBay priced @ \$1+, so estimated @ SEK2.00/~24¢ each. EMV = \$47+, Starting bid = \$20.



- E11. Sweden/Isö:** Complete pane of 20 phantasy stamps (4 across x 5 down) with margins and inscriptions, 1970 “four famous statesmen” issue, depicting Sir Winston Churchill, John F. Kennedy, Dag Hammarskjöld and K Adenauer, respectively, purported Swedish locals denominated 50, 75, 1.25 and 2.50 (no currency symbol), respectively, seldom-offered, fun Cinderella topical item. CMV = \$13, Starting bid = \$2.
- E12. Germany/Cinderellas:** Germany miscellany consisting of a strip of Nazi censor tape and 37 primarily unused, different (16 duplicates, one on a pane of eight and five used with postmarks) poster stamps/labels from various 1913-’80s charities and exhibitions, includes four large better poster stamps, earliest is pristine mint in vintage plakatstil style for the 1913 Basel Electricity Exhibition and, prices on eBay for most items are ~\$1 each, but similar plakatstil poster stamps are priced at \$5 to \$25 each. EMV = \$40+, Starting bid = \$10.
- E13. Europe/Cinderellas:** Eclectic miscellany consisting of 71 primarily unused, different (22 duplicates and 10 used) poster stamps/labels from various European charities and philatelic exhibitions, some fiscals, range 1910s-2000s, two non-Europe (Israel & Morocco) included in count. EMV = \$55, Starting bid = \$10.
- E14. U.S.A./Cinderellas:** U.S. eclectic miscellany consisting of scarce 1936 Kosciuszko Foundation poster stamp (denominated 5¢ for Pilsudski Scholarships), a faulty (unsigned) 1965 Federal duck stamp, nine circular bicentennial foil labels, 22 trade stamps & labels and a partially filled S&H redemption booklet with 63 S&H stamps in strips (enough to fill the book! EMV = \$5, Starting bid = \$1).
- E15. Topical/Esperanto/Cinderellas:** Lot of nine (4 different) Esperanto-related items, consisting of a beautiful mint perforated, gummed 1 7/8” x 2 1/4” poster stamp/promotion label for the 1949 34th Universal Esperanto Congress in Bournemouth, England, three mint imperforate 1 1/2-inch square labels for the 1974 59th Congress in Hamburg, four mint imperforate 1 1/2- by 1 1/2-inch labels for the 1976 61st Congress in Athens, and a Universal Esperanto Association circular foil seal. EMV = \$15, Starting bid = \$3.

**Victorian Trade Cards:** The next five lots are ~3- by 4 1/4-inch so-called Victorian trade cards issued around the start of the 20th Century by European merchants to advertise their products. The picture sides of the five cards offered here show depictions of foreign stamps not always of the countries from where the products originated. These cards make excellent ancillary items for topical collections or specialized collections of the countries whose stamps are pictured.

- E16. Romania:** Three 1871-90 Romanian postmarked stamps pictured on a Liebig Company (Antwerp) Fleisch-Extract card, ad text in German on backside. CMV = \$6, Starting bid = \$3.
- E17. Serbia:** Five 1879-96 Serbian postmarked stamps pictured on a Liebig Company (Antwerp) Fleisch-Extract card, ad text in German on backside. CMV = \$6, Starting bid = \$3.
- E18. Italy and China:** Card with 1891 Italian and 1897 Chinese unused stamps pictured on a Chocolat Lombart (Paris) card, ad text in French on backside. CMV = \$16, Starting bid = \$8.
- E19. Venezuela:** An 1899 Venezuelan unused stamp pictured on a C. Beriot (Lille, France) chicory coffee card, ad text in French on backside. CMV = \$16, Starting bid = \$8.
- E20. Greece:** Illustration of 1861 Greek stamp (with fanciful cancellation and perforations) on card that is entirely blank on backside (no manufacturer cited), possibly a “stock” item available to any businesses for their on-order printed ad text. CMV = \$12, Starting bid = \$8.

## Prices Realized – SCC Library Auction #42 (Closed April 15, 2016)

**Summary:** For this auction, there were 15 bidders, 12 of whom were successful in winning one or more lots. A total of 26 of 30 lots sold, with realizations totaling \$720 against cumulative starting bids of \$613.50

#1 = \$25, #2 = \$47, #3 = \$10, #4 = \$4, #5 = \$2, #6 = \$7, #7 = \$21, #8 = \$2, #9 = NS, #11A (#10 & #11) = \$46, #12 = \$2, #13 = NS, #14 = \$75, #15 = \$16, #16 = \$46, #17 = \$250, #18 = \$24, #19 = NS, #20 = \$7, #21 = \$4.50, #22 = \$17, #23 = \$9, #24 = \$23, #25 = \$4.50, #26 = \$30, #27 = \$3, #28 = \$32, #29 = \$13 and #30 = NS.

**Note:** NS following the lot number indicates that lot was unsold. The four unsold lots (numbers 9, 13, 19 and 20) are available for purchase at their respective starting bids on a first-come, first-served basis. If you are interested in buying any of these unsold lots, contact Roger Cichorz: [rcichorz@comcast.net](mailto:rcichorz@comcast.net) or (303) 494-8361. ■



# *Auctioneer of rare stamps*

## ***Specialities:***

*Scandinavian stamps and covers.*

*Classic stamps and covers of the World.*

*Large collections and accumulations.*



*Catalogue available at [www.postiljonen.com](http://www.postiljonen.com)  
or through subscription.*

*Consignments are always welcome!*

AuctionHouse international

# *Postiljonen*

*We value your collection*

Box 537 · SE-201 25 Malmö · Sweden · Tel. +46 40 25 88 50 · Fax. +46 40 25 88 59  
[www.postiljonen.com](http://www.postiljonen.com) · [stampauctions@postiljonen.se](mailto:stampauctions@postiljonen.se)

# northstamp.com

... like fishing in  
your lucky spot!

At northstamp.com you will enjoy that same exciting feeling as you discover a tremendous variety of specialized stamps and covers...our new "Stamping the Globe" video series... plus monthly coupons, discounts and special promotions. We've been helping collectors find great stamps since 1975.

**Reel in some great deals today!**

Watch our new video series at  
**northstamp.com**

## Stamping the Globe

*with Jerry*



"A Visit to APS"

"A Visit to APS"

"Perfecting the Perf"

"Neither Rich Nor Royal"

"Big Covers"

"My Wish List"

"The Stamp Market Today"

"Greenland Pakke Porto's"

"It's Greek to Me"

# northstamp.com

NORTHLAND INTERNATIONAL TRADING, LLC

80 Bloomfield Avenue, Caldwell, New Jersey 07006

973-226-0088 • 800-950-0058 • northstamp@aol.com • Fax: 973-403-2601

